



Full wwPDB X-ray Structure Validation Report ⓘ

Feb 28, 2014 – 02:44 AM GMT

PDB ID : 1V3E
Title : Structure of the hemagglutinin-neuraminidase from human parainfluenza virus type III: complex with ZANAMAVIR
Authors : Lawrence, M.C.; Borg, N.A.; Streltsov, V.A.; Pilling, P.A.; Epa, V.C.; Varghese, J.N.; McKimm-Breschkin, J.L.; Colman, P.M.
Deposited on : 2003-10-30
Resolution : 1.89 Å(reported)

This is a full wwPDB validation report for a publicly released PDB entry.
We welcome your comments at validation@mail.wwpdb.org
A user guide is available at <http://wwpdb.org/ValidationPDFNotes.html>

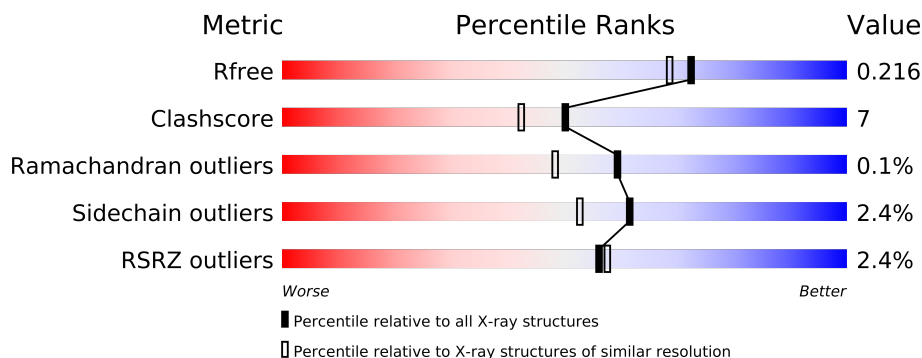
The following versions of software and data (see [references](#)) were used in the production of this report:

MolProbity : 4.02b-467
Mogul : 1.15 2013
Xtriage (Phenix) : dev-1323
EDS : stable22639
Percentile statistics : 21963
Refmac : 5.8.0049
CCP4 : 6.3.0 (Settle)
Ideal geometry (proteins) : Engh & Huber (2001)
Ideal geometry (DNA, RNA) : Parkinson et. al. (1996)
Validation Pipeline (wwPDB-VP) : stable22683

1 Overall quality at a glance

The reported resolution of this entry is 1.89 Å.

Percentile scores (ranging between 0-100) for global validation metrics of the entry are shown in the following graphic. The table shows the number of entries on which the scores are based.



Metric	Whole archive (#Entries)	Similar resolution (#Entries, resolution range(Å))
R_{free}	66092	3684 (1.90-1.90)
Clashscore	79885	4465 (1.90-1.90)
Ramachandran outliers	78287	4413 (1.90-1.90)
Sidechain outliers	78261	4414 (1.90-1.90)
RSRZ outliers	66119	3686 (1.90-1.90)

The table below summarises the geometric issues observed across the polymeric chains and their fit to the electron density. The red, orange, yellow and green segments on the lower bar indicate the fraction of residues that contain outliers for ≥ 3 , 2, 1 and 0 types of geometric quality criteria. The upper red bar (where present) indicates the fraction of residues that have poor fit to the electron density.

Mol	Chain	Length	Quality of chain
1	A	431	
1	B	431	

The following table lists non-polymeric compounds that are outliers for geometric or electron-density-fit criteria:

Mol	Type	Chain	Res	Geometry	Electron density
2	NAG	A	3081	-	X
2	NAG	B	3081	-	X
5	SO4	A	3002	-	X
5	SO4	B	3001	-	X

2 Entry composition i

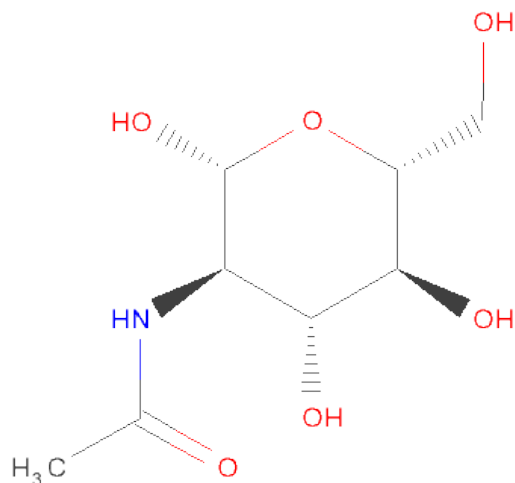
There are 7 unique types of molecules in this entry. The entry contains 7921 atoms, of which 0 are hydrogen and 0 are deuterium.

In the tables below, the ZeroOcc column contains the number of atoms modelled with zero occupancy, the AltConf column contains the number of residues with at least one atom in alternate conformation and the Trace column contains the number of residues modelled with at most 2 atoms.

- Molecule 1 is a protein called hemagglutinin-neuraminidaseglycoprotein.

Mol	Chain	Residues	Atoms					ZeroOcc	AltConf	Trace
1	A	431	Total	C	N	O	S	0	1	0
			3383	2142	581	640	20			
1	B	431	Total	C	N	O	S	0	1	0
			3383	2142	581	640	20			

- Molecule 2 is SUGAR (N-ACETYL-D-GLUCOSAMINE) (three-letter code: NAG) (formula: $C_8H_{15}NO_6$).



Mol	Chain	Residues	Atoms				ZeroOcc	AltConf
2	A	1	Total	C	N	O	0	0
			14	8	1	5		
2	B	1	Total	C	N	O	0	0
			14	8	1	5		
2	B	1	Total	C	N	O	0	0
			14	8	1	5		

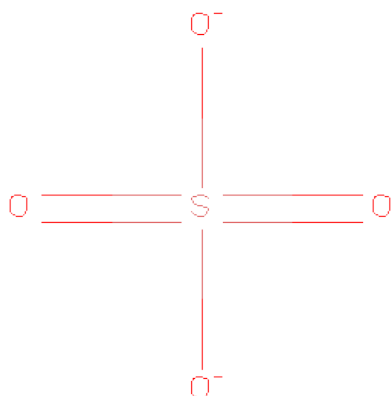
- Molecule 3 is a polymer of unknown type called SUGAR (2-MER).

Mol	Chain	Residues	Atoms				ZeroOcc	AltConf
3	A	2	Total	C	N	O	0	0
			28	16	2	10		
3	B	2	Total	C	N	O	0	0
			28	16	2	10		

- Molecule 4 is CALCIUM ION (three-letter code: CA) (formula: Ca).

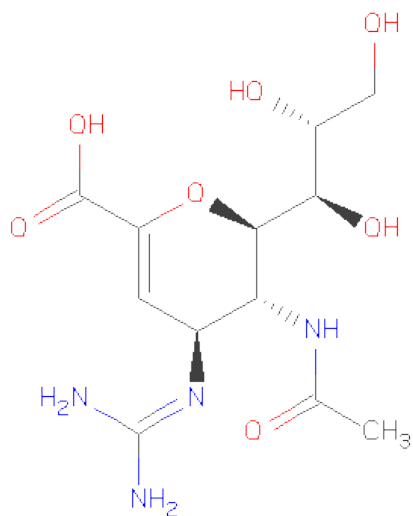
Mol	Chain	Residues	Atoms		ZeroOcc	AltConf
4	B	1	Total	Ca	0	0
			1	1		
4	A	1	Total	Ca	0	0
			1	1		

- Molecule 5 is SULFATE ION (three-letter code: SO4) (formula: O₄S).



Mol	Chain	Residues	Atoms			ZeroOcc	AltConf
5	B	1	Total	O	S	0	0
			5	4	1		
5	A	1	Total	O	S	0	0
			5	4	1		

- Molecule 6 is ZANAMIVIR (three-letter code: ZMR) (formula: C₁₂H₂₀N₄O₇).



Mol	Chain	Residues	Atoms				ZeroOcc	AltConf
6	A	1	Total	C	N	O	0	0
			23	12	4	7		
6	B	1	Total	C	N	O	0	0
			23	12	4	7		

- Molecule 7 is water.

Mol	Chain	Residues	Atoms		ZeroOcc	AltConf
7	A	468	Total	O	0	0
			468	468		
7	B	531	Total	O	0	0
			531	531		

3 Residue-property plots

These plots are drawn for all protein, RNA and DNA chains in the entry. The first graphic for a chain summarises the proportions of errors displayed in the second graphic. The second graphic shows the sequence view annotated by issues in geometry and electron density. Residues are color-coded according to the number of geometric quality criteria for which they contain at least one outlier: green = 0, yellow = 1, orange = 2 and red = 3 or more. A red dot above a residue indicates a poor fit to the electron density ($RSRZ > 2$). Stretches of 2 or more consecutive residues without any outlier are shown as a green connector. Residues present in the sample, but not in the model, are shown in grey.

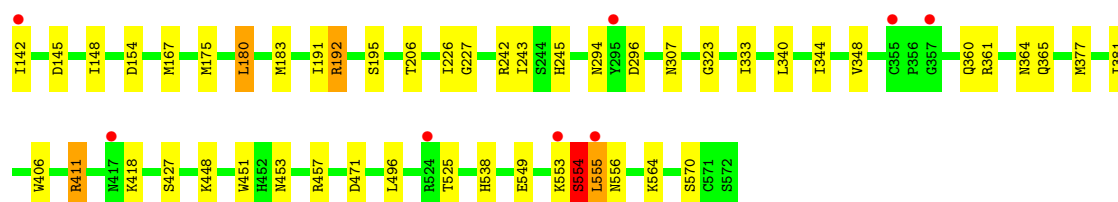
- Molecule 1: hemagglutinin-neuraminidaseglycoprotein

Chain A: 



- Molecule 1: hemagglutinin-neuraminidaseglycoprotein

Chain B: 



4 Data and refinement statistics

Property	Value	Source
Space group	P 62 2 2	Depositor
Cell constants a, b, c, α , β , γ	218.45Å 218.45Å 109.90Å 90.00° 90.00° 120.00°	Depositor
Resolution (Å)	29.97 – 1.89 29.97 – 1.90	Depositor EDS
% Data completeness (in resolution range)	99.7 (29.97-1.89) 99.8 (29.97-1.90)	Depositor EDS
R_{merge}	0.15	Depositor
R_{sym}	0.15	Depositor
$\langle I/\sigma(I) \rangle$ ¹	2.28 (at 1.91Å)	Xtriage
Refinement program	CNS 1.1	Depositor
R, R_{free}	0.184 , 0.219 0.181 , 0.216	Depositor DCC
R_{free} test set	6391 reflections (5.61%)	DCC
Wilson B-factor (Å ²)	27.4	Xtriage
Anisotropy	0.177	Xtriage
Bulk solvent k_{sol} (e/Å ³), B_{sol} (Å ²)	0.37 , 57.3	EDS
Estimated twinning fraction	No twinning to report.	Xtriage
L-test for twinning	$\langle L \rangle = 0.51$, $\langle L^2 \rangle = 0.34$	Xtriage
Outliers	0 of 120373 reflections	Xtriage
F_o, F_c correlation	0.96	EDS
Total number of atoms	7921	wwPDB-VP
Average B, all atoms (Å ²)	34.0	wwPDB-VP

Xtriage's analysis on translational NCS is as follows: *The largest off-origin peak in the Patterson function is 2.18% of the height of the origin peak. No significant pseudotranslation is detected.*

¹Intensities estimated from amplitudes.

5 Model quality ⓘ

5.1 Standard geometry ⓘ

Bond lengths and bond angles in the following residue types are not validated in this section: ZMR, CA, NAG, SO4

The Z score for a bond length (or angle) is the number of standard deviations the observed value is removed from the expected value. A bond length (or angle) with $|Z| > 5$ is considered an outlier worth inspection. RMSZ is the root-mean-square of all Z scores of the bond lengths (or angles).

Mol	Chain	Bond lengths		Bond angles	
		RMSZ	$\# Z > 5$	RMSZ	$\# Z > 5$
1	A	0.82	0/3469	0.94	2/4730 (0.0%)
1	B	0.85	1/3469 (0.0%)	0.94	4/4730 (0.1%)
All	All	0.83	1/6938 (0.0%)	0.94	6/9460 (0.1%)

All (1) bond length outliers are listed below:

Mol	Chain	Res	Type	Atoms	Z	Observed(Å)	Ideal(Å)
1	B	175	MET	SD-CE	-6.41	1.42	1.77

All (6) bond angle outliers are listed below:

Mol	Chain	Res	Type	Atoms	Z	Observed(°)	Ideal(°)
1	A	515	ARG	NE-CZ-NH2	-10.69	114.96	120.30
1	A	515	ARG	NE-CZ-NH1	8.45	124.53	120.30
1	B	411	ARG	NE-CZ-NH2	-5.92	117.34	120.30
1	B	496	LEU	N-CA-C	-5.50	96.14	111.00
1	B	538	HIS	N-CA-C	-5.32	96.64	111.00
1	B	175	MET	CG-SD-CE	-5.18	91.92	100.20

There are no chirality outliers.

There are no planarity outliers.

5.2 Close contacts ⓘ

In the following table, the Non-H and H(model) columns list the number of non-hydrogen atoms and hydrogen atoms in the chain respectively. The H(added) column lists the number of hydrogens added by MolProbity. The Clashes column lists the number of clashes within the asymmetric unit, and the number in parentheses is this value normalized per 1000 atoms of the molecule in the chain. The Symm-Clashes column gives symmetry related clashes, in the same way as for the Clashes column.

Mol	Chain	Non-H	H(model)	H(added)	Clashes	Symm-Clashes
1	A	3383	0	3349	64	0
1	B	3383	0	3348	45	1
2	A	14	0	13	0	0
2	B	28	0	26	0	0
3	A	28	0	25	1	0
3	B	28	0	25	1	0
4	A	1	0	0	0	0
4	B	1	0	0	0	0
5	A	5	0	0	0	0
5	B	5	0	0	0	0
6	A	23	0	19	0	0
6	B	23	0	19	0	0
7	A	468	0	0	17	0
7	B	531	0	0	11	1
All	All	7921	0	6824	103	2

Clashscore is defined as the number of clashes calculated for the entry per 1000 atoms (including hydrogens) of the entry. The overall clashscore for this entry is 7.

All (103) close contacts within the same asymmetric unit are listed below.

Atom-1	Atom-2	Distance(Å)	Clash(Å)
1:A:195:SER:OG	7:A:4201:HOH:O	1.73	1.05
1:A:524:ARG:H	1:A:524:ARG:HD2	1.33	0.94
1:B:360:GLN:HE21	1:B:364:ASN:HD21	1.26	0.84
1:A:553:LYS:HA	7:A:4441:HOH:O	1.76	0.83
1:A:142:ILE:HG13	7:A:4452:HOH:O	1.82	0.80
1:A:524:ARG:CD	1:A:524:ARG:H	1.94	0.78
1:A:142:ILE:HG23	1:A:143:THR:HG23	1.66	0.78
1:B:360:GLN:HE21	1:B:364:ASN:ND2	1.83	0.76
1:B:365:GLN:HG2	7:B:5664:HOH:O	1.85	0.76
1:A:462:GLU:OE1	7:A:4467:HOH:O	2.02	0.76
1:B:361:ARG:O	1:B:365:GLN:HG3	1.86	0.75
1:B:525:THR:O	1:B:553:LYS:HE2	1.87	0.74
1:A:160:THR:HG23	1:A:161:SER:H	1.51	0.73
1:A:556:ASN:ND2	7:A:4441:HOH:O	2.15	0.72
1:A:551:ASN:ND2	7:A:4469:HOH:O	2.23	0.71
1:A:180:LEU:HD13	1:B:180:LEU:HD13	1.73	0.70
1:A:539:TYR:O	1:A:540:ASN:HB2	1.93	0.69
1:B:294:ASN:HB2	1:B:296:ASP:OD1	1.94	0.68
1:A:277:ARG:HD2	1:A:371:TRP:CZ2	2.29	0.67
1:A:160:THR:HG22	7:A:4449:HOH:O	1.95	0.67
7:A:4253:HOH:O	1:B:554:SER:HB3	1.93	0.66
1:B:555:LEU:O	1:B:556:ASN:HB3	1.94	0.66

Continued on next page...

Continued from previous page...

Atom-1	Atom-2	Distance(Å)	Clash(Å)
1:B:418:LYS:HE3	7:B:5636:HOH:O	1.95	0.66
1:A:553:LYS:HB2	1:A:553:LYS:NZ	2.13	0.64
1:B:243:ILE:HD12	1:B:245[B]:HIS:NE2	2.12	0.64
1:A:277:ARG:HD3	7:A:4459:HOH:O	1.97	0.62
1:A:160:THR:HG23	1:A:161:SER:N	2.14	0.62
1:A:142:ILE:N	7:A:4295:HOH:O	2.34	0.60
1:A:307:ASN:HB2	7:A:4398:HOH:O	2.00	0.60
1:A:553:LYS:HG2	7:A:4441:HOH:O	2.03	0.58
1:B:554:SER:HB2	1:B:555:LEU:HD22	1.84	0.58
1:B:226:ILE:HD12	1:B:243:ILE:HD11	1.85	0.57
1:A:524:ARG:N	1:A:524:ARG:HD2	2.12	0.57
1:A:183:MET:HE3	1:B:183:MET:HE3	1.87	0.56
1:B:553:LYS:HA	7:B:5727:HOH:O	2.06	0.56
1:A:539:TYR:O	1:A:540:ASN:CB	2.53	0.56
1:B:142:ILE:N	7:B:5707:HOH:O	2.40	0.55
1:A:515:ARG:HD2	1:A:518:GLU:OE1	2.07	0.54
1:A:277:ARG:HD2	1:A:371:TRP:CE2	2.43	0.54
1:A:551:ASN:HA	1:A:558:LEU:HD23	1.90	0.54
1:A:527:SER:HB2	1:A:551:ASN:HB3	1.90	0.53
1:A:149:LYS:HD2	7:A:4366:HOH:O	2.07	0.53
1:A:183:MET:CE	1:B:183:MET:HE3	2.39	0.53
1:B:555:LEU:HD22	1:B:555:LEU:H	1.75	0.52
1:A:183:MET:CE	1:B:183:MET:CE	2.88	0.52
1:A:183:MET:HE3	1:B:183:MET:CE	2.41	0.50
1:B:377:MET:HG3	1:B:406:TRP:CZ2	2.47	0.50
1:B:555:LEU:O	1:B:556:ASN:CB	2.59	0.49
1:A:195:SER:HB3	1:A:206:THR:HG22	1.94	0.49
1:A:361:ARG:O	1:A:365:GLN:HG3	2.12	0.49
1:B:427:SER:HB3	7:B:5320:HOH:O	2.13	0.48
1:A:175:MET:SD	1:A:236:VAL:HG21	2.54	0.48
1:A:515:ARG:CD	1:A:518:GLU:OE1	2.62	0.47
1:A:323:GLY:HA3	1:A:411:ARG:HB3	1.95	0.47
1:B:360:GLN:NE2	1:B:364:ASN:HD21	2.04	0.47
1:B:333:ILE:CG2	1:B:381:ILE:HG23	2.45	0.47
1:B:451:TRP:CH2	1:B:453:ASN:HB2	2.50	0.47
1:A:523:ASN:HB2	1:A:524:ARG:NH1	2.30	0.47
1:A:169:THR:HA	1:A:170:PRO:C	2.35	0.47
1:B:340:LEU:HD13	1:B:344:ILE:HD12	1.97	0.47
3:A:3511:NAG:H81	7:A:4270:HOH:O	2.15	0.47
1:A:397:TRP:CD2	1:A:442:TYR:HB3	2.50	0.47
3:B:3511:NAG:H62	3:B:3512:NAG:C8	2.44	0.46
1:B:525:THR:O	1:B:553:LYS:CE	2.61	0.46

Continued on next page...

Continued from previous page...

Atom-1	Atom-2	Distance(Å)	Clash(Å)
1:A:160:THR:CG2	1:A:161:SER:H	2.26	0.46
1:B:167:MET:HG2	7:B:5652:HOH:O	2.15	0.46
1:B:471:ASP:HB2	7:B:5509:HOH:O	2.15	0.46
1:A:553:LYS:HB2	1:A:553:LYS:HZ3	1.79	0.46
1:A:277:ARG:HD2	1:A:371:TRP:CH2	2.51	0.46
1:A:523:ASN:HB2	1:A:524:ARG:CZ	2.46	0.46
1:A:553:LYS:CA	7:A:4441:HOH:O	2.52	0.45
1:A:240:ASN:HD22	1:A:240:ASN:C	2.20	0.44
1:A:180:LEU:HD13	1:B:180:LEU:CD1	2.44	0.44
1:B:183:MET:HE3	1:B:183:MET:HB3	1.88	0.44
1:A:451:TRP:CH2	1:A:453:ASN:HB2	2.54	0.43
1:A:180:LEU:HD22	1:B:180:LEU:HD22	2.01	0.43
1:A:424:ARG:HG2	1:A:426:THR:OG1	2.18	0.43
1:B:340:LEU:CD1	1:B:344:ILE:HD12	2.49	0.43
1:A:311:PHE:HB3	1:A:313:GLN:O	2.19	0.43
1:A:167:MET:HG2	1:A:570:SER:HB3	2.00	0.43
1:A:526:LEU:HD11	1:A:550:ILE:HG23	2.00	0.42
1:A:149:LYS:HB3	1:A:149:LYS:HE2	1.77	0.42
1:A:346:GLU:HG2	7:A:4410:HOH:O	2.19	0.42
1:A:160:THR:CG2	1:A:161:SER:N	2.82	0.42
1:B:307:ASN:HB3	7:B:5713:HOH:O	2.20	0.42
1:B:348:VAL:HG22	1:B:364:ASN:HD22	1.85	0.41
1:B:145:ASP:HB2	1:B:148:ILE:HD12	2.02	0.41
1:B:192:ARG:HB2	1:B:549:GLU:OE2	2.19	0.41
1:B:192:ARG:NH2	7:B:5620:HOH:O	2.40	0.41
1:A:295:TYR:HD1	1:A:295:TYR:HA	1.81	0.41
1:A:307:ASN:ND2	7:A:4425:HOH:O	2.54	0.41
1:B:323:GLY:HA3	1:B:411:ARG:HB3	2.01	0.41
1:A:333:ILE:CG2	1:A:381:ILE:HG23	2.50	0.41
1:B:195:SER:HB3	1:B:206:THR:HG22	2.03	0.41
1:A:180:LEU:CD1	1:B:180:LEU:HD13	2.48	0.41
1:B:227:GLY:HA2	1:B:242:ARG:HG2	2.03	0.41
1:A:494:VAL:HG22	1:A:507:ILE:HG12	2.03	0.41
1:B:448:LYS:HE2	7:B:5631:HOH:O	2.20	0.41
1:A:458:PRO:HD3	1:A:496:LEU:O	2.21	0.41
1:B:570:SER:HB2	7:B:5579:HOH:O	2.22	0.40
1:A:347:ASN:ND2	1:A:364:ASN:HD21	2.18	0.40
1:A:219:LYS:HB2	1:A:249:ILE:HG12	2.04	0.40
1:A:148:ILE:HD13	1:A:229:ILE:HG22	2.03	0.40

All (2) symmetry-related close contacts are listed below. The label for Atom-2 includes the symmetry operator and encoded unit-cell translations to be applied.

Atom-1	Atom-2	Distance(Å)	Clash(Å)
1:B:296:ASP:OD2	1:B:296:ASP:OD2[10_665]	1.51	0.69
7:B:5722:HOH:O	7:B:5722:HOH:O[10_665]	1.86	0.34

5.3 Torsion angles

5.3.1 Protein backbone ⓘ

In the following table, the Percentiles column shows the percent Ramachandran outliers of the chain as a percentile score with respect to all X-ray entries followed by that with respect to entries of similar resolution. The Analysed column shows the number of residues for which the backbone conformation was analysed, and the total number of residues.

Mol	Chain	Analysed	Favoured	Allowed	Outliers	Percentiles	
1	A	430/431 (100%)	407 (95%)	23 (5%)	0	100	100
1	B	430/431 (100%)	409 (95%)	20 (5%)	1 (0%)	56	44
All	All	860/862 (100%)	816 (95%)	43 (5%)	1 (0%)	59	48

All (1) Ramachandran outliers are listed below:

Mol	Chain	Res	Type
1	B	554	SER

5.3.2 Protein sidechains ⓘ

In the following table, the Percentiles column shows the percent sidechain outliers of the chain as a percentile score with respect to all X-ray entries followed by that with respect to entries of similar resolution. The Analysed column shows the number of residues for which the sidechain conformation was analysed, and the total number of residues.

Mol	Chain	Analysed	Rotameric	Outliers	Percentiles	
1	A	391/390 (100%)	380 (97%)	11 (3%)	56	45
1	B	391/390 (100%)	383 (98%)	8 (2%)	68	61
All	All	782/780 (100%)	763 (98%)	19 (2%)	61	53

All (19) residues with a non-rotameric sidechain are listed below:

Mol	Chain	Res	Type
1	A	160	THR
1	A	180	LEU
1	A	191	ILE

Continued on next page...

Continued from previous page...

Mol	Chain	Res	Type
1	A	240	ASN
1	A	242	ARG
1	A	295	TYR
1	A	457	ARG
1	A	471	ASP
1	A	524	ARG
1	A	553	LYS
1	A	564	LYS
1	B	154	ASP
1	B	180	LEU
1	B	191	ILE
1	B	192	ARG
1	B	457	ARG
1	B	554	SER
1	B	555	LEU
1	B	564	LYS

Some sidechains can be flipped to improve hydrogen bonding and reduce clashes. All (14) such sidechains are listed below:

Mol	Chain	Res	Type
1	A	240	ASN
1	A	262	ASN
1	A	347	ASN
1	A	365	GLN
1	A	504	ASN
1	A	556	ASN
1	B	240	ASN
1	B	250	ASN
1	B	262	ASN
1	B	307	ASN
1	B	347	ASN
1	B	364	ASN
1	B	504	ASN
1	B	556	ASN

5.3.3 RNA ⓘ

There are no RNA chains in this entry.

5.4 Non-standard residues in protein, DNA, RNA chains ⓘ

There are no non-standard protein/DNA/RNA residues in this entry.

5.5 Carbohydrates ⓘ

4 carbohydrates are modelled in this entry.

In the following table, the Counts columns list the number of bonds (or angles) for which Mogul statistics could be retrieved, the number of bonds (or angles) that are observed in the model and the number of bonds (or angles) that are defined in the chemical component dictionary. The Link column lists molecule types, if any, to which the group is linked. The Z score for a bond length (or angle) is the number of standard deviations the observed value is removed from the expected value. A bond length (or angle) with $|Z| > 2$ is considered an outlier worth inspection. RMSZ is the root-mean-square of all Z scores of the bond lengths (or angles).

Mol	Type	Chain	Res	Link	Bond lengths			Bond angles		
					Counts	RMSZ	$\# Z > 2$	Counts	RMSZ	$\# Z > 2$
3	NAG	A	3511	1,3	12,14,15	0.61	0	15,19,21	1.08	2 (13%)
3	NAG	A	3512	3	12,14,15	0.48	0	15,19,21	0.73	0
3	NAG	B	3511	1,3	12,14,15	0.78	0	15,19,21	0.96	1 (6%)
3	NAG	B	3512	3	12,14,15	0.62	0	15,19,21	0.89	0

In the following table, the Chirals column lists the number of chiral outliers, the number of chiral centers analysed, the number of these observed in the model and the number defined in the chemical component dictionary. Similar counts are reported in the Torsion and Rings columns. '-' means no outliers of that kind were identified.

Mol	Type	Chain	Res	Link	Chirals	Torsions	Rings
3	NAG	A	3511	1,3	-	0/6/23/26	0/1/1/1
3	NAG	A	3512	3	-	0/6/23/26	0/1/1/1
3	NAG	B	3511	1,3	-	0/6/23/26	0/1/1/1
3	NAG	B	3512	3	-	0/6/23/26	0/1/1/1

There are no bond length outliers.

All (3) bond angle outliers are listed below:

Mol	Chain	Res	Type	Atoms	Z	Observed(°)	Ideal(°)
3	A	3511	NAG	C2-N2-C7	-2.97	118.11	123.09
3	B	3511	NAG	C2-N2-C7	-2.41	119.04	123.09
3	A	3511	NAG	C4-C3-C2	-2.09	106.20	111.32

There are no chirality outliers.

There are no torsion outliers.

There are no ring outliers.

5.6 Ligand geometry ⓘ

Of 9 ligands modelled in this entry, 2 are monoatomic - leaving 7 for Mogul analysis.

In the following table, the Counts columns list the number of bonds (or angles) for which Mogul statistics could be retrieved, the number of bonds (or angles) that are observed in the model and the number of bonds (or angles) that are defined in the chemical component dictionary. The Link column lists molecule types, if any, to which the group is linked. The Z score for a bond length (or angle) is the number of standard deviations the observed value is removed from the expected value. A bond length (or angle) with $|Z| > 2$ is considered an outlier worth inspection. RMSZ is the root-mean-square of all Z scores of the bond lengths (or angles).

Mol	Type	Chain	Res	Link	Bond lengths			Bond angles		
					Counts	RMSZ	# Z > 2	Counts	RMSZ	# Z > 2
6	ZMR	A	1200	-	23,23,23	2.27	7 (30%)	32,32,32	1.70	9 (28%)
5	SO4	A	3002	-	4,4,4	0.31	0	6,6,6	0.16	0
2	NAG	A	3081	1	12,14,15	0.55	0	15,19,21	0.70	0
6	ZMR	B	2200	-	23,23,23	2.20	6 (26%)	32,32,32	1.87	7 (21%)
5	SO4	B	3001	-	4,4,4	0.33	0	6,6,6	0.09	0
2	NAG	B	3081	1	12,14,15	0.51	0	15,19,21	0.84	1 (6%)
2	NAG	B	5231	1	12,14,15	0.55	0	15,19,21	0.92	1 (6%)

In the following table, the Chirals column lists the number of chiral outliers, the number of chiral centers analysed, the number of these observed in the model and the number defined in the chemical component dictionary. Similar counts are reported in the Torsion and Rings columns. '-' means no outliers of that kind were identified.

Mol	Type	Chain	Res	Link	Chirals	Torsions	Rings
6	ZMR	A	1200	-	-	0/21/38/38	0/1/1/1
5	SO4	A	3002	-	-	0/0/0/0	0/0/0/0
2	NAG	A	3081	1	-	0/6/23/26	0/1/1/1
6	ZMR	B	2200	-	-	0/21/38/38	0/1/1/1
5	SO4	B	3001	-	-	0/0/0/0	0/0/0/0
2	NAG	B	3081	1	-	0/6/23/26	0/1/1/1
2	NAG	B	5231	1	-	0/6/23/26	0/1/1/1

All (13) bond length outliers are listed below:

Mol	Chain	Res	Type	Atoms	Z	Observed(Å)	Ideal(Å)
6	B	2200	ZMR	C7-C6	5.63	1.59	1.52

Continued on next page...

Continued from previous page...

Mol	Chain	Res	Type	Atoms	Z	Observed(Å)	Ideal(Å)
6	A	1200	ZMR	C7-C6	5.14	1.59	1.52
6	A	1200	ZMR	CZ-NE	5.02	1.39	1.29
6	B	2200	ZMR	C4-C5	4.52	1.61	1.54
6	A	1200	ZMR	C4-C5	4.47	1.60	1.54
6	B	2200	ZMR	CZ-NE	3.95	1.37	1.29
6	A	1200	ZMR	C3-C2	3.87	1.40	1.33
6	B	2200	ZMR	C3-C2	3.83	1.40	1.33
6	B	2200	ZMR	C2-C1	-2.66	1.41	1.48
6	A	1200	ZMR	C11-C10	2.64	1.56	1.50
6	A	1200	ZMR	CZ-NH2	-2.54	1.29	1.33
6	B	2200	ZMR	C9-C8	2.08	1.58	1.52
6	A	1200	ZMR	C2-C1	-2.05	1.43	1.48

All (18) bond angle outliers are listed below:

Mol	Chain	Res	Type	Atoms	Z	Observed(°)	Ideal(°)
6	B	2200	ZMR	O6-C2-C3	-4.76	118.16	124.33
6	B	2200	ZMR	C6-O6-C2	4.32	121.17	114.72
6	A	1200	ZMR	O6-C2-C3	-4.31	118.75	124.33
6	B	2200	ZMR	NH2-CZ-NH1	3.64	123.50	118.28
6	A	1200	ZMR	C4-C5-N5	-3.49	107.29	110.81
6	B	2200	ZMR	C8-C7-C6	-3.39	106.42	112.99
6	A	1200	ZMR	NH2-CZ-NH1	3.35	123.09	118.28
6	B	2200	ZMR	C4-C5-N5	-3.05	107.74	110.81
6	A	1200	ZMR	C7-C6-C5	-2.92	109.94	114.24
6	A	1200	ZMR	C6-O6-C2	2.75	118.84	114.72
6	A	1200	ZMR	O6-C2-C1	2.65	117.10	111.88
6	B	2200	ZMR	O6-C2-C1	2.56	116.93	111.88
6	B	2200	ZMR	C6-C5-N5	-2.51	106.60	110.99
2	B	5231	NAG	C3-C2-N2	-2.48	107.98	111.76
6	A	1200	ZMR	C8-C7-C6	-2.37	108.39	112.99
6	A	1200	ZMR	C6-C5-C4	-2.05	106.72	110.31
6	A	1200	ZMR	C6-C5-N5	-2.03	107.45	110.99
2	B	3081	NAG	C3-C2-N2	-2.01	108.70	111.76

There are no chirality outliers.

There are no torsion outliers.

There are no ring outliers.

5.7 Other polymers ⓘ

There are no such residues in this entry.

5.8 Polymer linkage issues

There are no chain breaks in this entry.

6 Fit of model and data ⓘ

6.1 Protein, DNA and RNA chains ⓘ

In the following table, the column labelled ‘#RSRZ> 2’ contains the number (and percentage) of RSRZ outliers, followed by percent RSRZ outliers for the chain as percentile scores relative to all X-ray entries and entries of similar resolution. The OWAB column contains the minimum, median, 95th percentile and maximum values of the occupancy-weighted average B-factor per residue. The column labelled ‘Q< 0.9’ lists the number of (and percentage) of residues with an average occupancy less than 0.9.

Mol	Chain	Analysed	<RSRZ>	#RSRZ>2	OWAB(Å ²)	Q<0.9
1	A	431/431 (100%)	-0.09	13 (3%) 48 49	18, 29, 53, 82	0
1	B	431/431 (100%)	-0.17	8 (1%) 64 65	18, 28, 51, 73	0
All	All	862/862 (100%)	-0.13	21 (2%) 56 57	18, 28, 53, 82	0

All (21) RSRZ outliers are listed below:

Mol	Chain	Res	Type	RSRZ
1	A	553	LYS	5.0
1	A	160	THR	4.5
1	A	572	SER	3.6
1	B	295	TYR	3.6
1	B	142	ILE	3.3
1	A	295	TYR	3.1
1	A	163	LEU	3.0
1	A	161	SER	3.0
1	A	142	ILE	2.6
1	A	416	GLY	2.6
1	A	158	ARG	2.5
1	A	440	THR	2.5
1	B	357	GLY	2.4
1	A	556	ASN	2.4
1	B	417	ASN	2.3
1	B	524	ARG	2.3
1	A	417	ASN	2.2
1	B	555	LEU	2.1
1	B	355	CYS	2.1
1	A	361	ARG	2.0
1	B	553	LYS	2.0

6.2 Non-standard residues in protein, DNA, RNA chains ⓘ

There are no non-standard protein/DNA/RNA residues in this entry.

6.3 Carbohydrates ⓘ

In the following table, the Atoms column lists the number of modelled atoms in the group and the number defined in the chemical component dictionary. LLDF column lists the quality of electron density of the group with respect to its neighbouring residues in protein, DNA or RNA chains. The B-factors column lists the minimum, median, 95th percentile and maximum values of B factors of atoms in the group. The column labelled 'Q< 0.9' lists the number of atoms with occupancy less than 0.9.

Mol	Type	Chain	Res	Atoms	RSR	LLDF	B-factors(Å ²)	Q<0.9
3	NAG	A	3511	14/15	0.21	2.98	68,78,85,85	0
3	NAG	A	3512	14/15	0.18	1.57	75,81,85,87	0
3	NAG	B	3512	14/15	0.22	1.42	65,74,79,80	0
3	NAG	B	3511	14/15	0.15	0.00	67,69,74,75	0

6.4 Ligands ⓘ

In the following table, the Atoms column lists the number of modelled atoms in the group and the number defined in the chemical component dictionary. LLDF column lists the quality of electron density of the group with respect to its neighbouring residues in protein, DNA or RNA chains. The B-factors column lists the minimum, median, 95th percentile and maximum values of B factors of atoms in the group. The column labelled 'Q< 0.9' lists the number of atoms with occupancy less than 0.9.

Mol	Type	Chain	Res	Atoms	RSR	LLDF	B-factors(Å ²)	Q<0.9
5	SO4	A	3002	5/5	0.23	27.77	91,93,97,98	0
5	SO4	B	3001	5/5	0.21	11.52	82,82,88,88	0
2	NAG	A	3081	14/15	0.38	10.36	59,67,73,78	0
2	NAG	B	3081	14/15	0.24	2.62	42,47,55,59	0
2	NAG	B	5231	14/15	0.21	0.72	47,60,70,70	0
6	ZMR	B	2200	23/23	0.07	-0.90	18,23,31,32	0
6	ZMR	A	1200	23/23	0.06	-1.15	20,25,30,33	0
4	CA	B	2001	1/1	0.04	-2.05	26,26,26,26	0
4	CA	A	4001	1/1	0.04	-2.22	32,32,32,32	0

6.5 Other polymers ⓘ

There are no such residues in this entry.