



# Full wwPDB X-ray Structure Validation Report ⓘ

Feb 27, 2014 – 08:15 PM GMT

PDB ID : 3V3N  
Title : Crystal structure of TetX2 T280A: an adaptive mutant in complex with minocycline  
Authors : Walkiewicz, K.; Shamoo, Y.  
Deposited on : 2011-12-13  
Resolution : 2.70 Å(reported)

This is a full wwPDB validation report for a publicly released PDB entry.  
We welcome your comments at [validation@mail.wwpdb.org](mailto:validation@mail.wwpdb.org)  
A user guide is available at <http://wwpdb.org/ValidationPDFNotes.html>

---

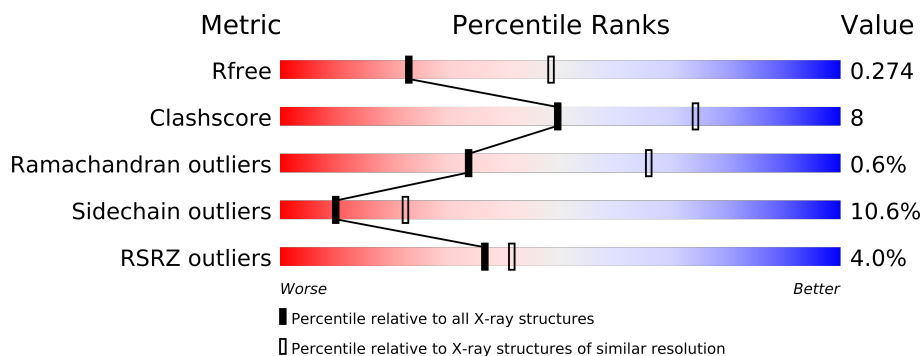
The following versions of software and data (see [references](#)) were used in the production of this report:

MolProbity : 4.02b-467  
Mogul : 1.15 2013  
Xtriage (Phenix) : dev-1323  
EDS : stable22639  
Percentile statistics : 21963  
Refmac : 5.8.0049  
CCP4 : 6.3.0 (Settle)  
Ideal geometry (proteins) : Engh & Huber (2001)  
Ideal geometry (DNA, RNA) : Parkinson et. al. (1996)  
Validation Pipeline (wwPDB-VP) : stable22683

# 1 Overall quality at a glance

The reported resolution of this entry is 2.70 Å.

Percentile scores (ranging between 0-100) for global validation metrics of the entry are shown in the following graphic. The table shows the number of entries on which the scores are based.



Metric	Whole archive (#Entries)	Similar resolution (#Entries, resolution range(Å))
$R_{free}$	66092	1557 (2.70-2.70)
Clashscore	79885	1939 (2.70-2.70)
Ramachandran outliers	78287	1905 (2.70-2.70)
Sidechain outliers	78261	1905 (2.70-2.70)
RSRZ outliers	66119	1559 (2.70-2.70)

The table below summarises the geometric issues observed across the polymeric chains and their fit to the electron density. The red, orange, yellow and green segments on the lower bar indicate the fraction of residues that contain outliers for  $\geq 3$ , 2, 1 and 0 types of geometric quality criteria. The upper red bar (where present) indicates the fraction of residues that have poor fit to the electron density.

Mol	Chain	Length	Quality of chain
1	A	378	
1	B	378	
1	C	378	
1	D	378	

The following table lists non-polymeric compounds that are outliers for geometric or electron-density-fit criteria:

Mol	Type	Chain	Res	Geometry	Electron density
3	SO4	B	2003	-	X
3	SO4	C	2003	-	X

## 2 Entry composition

There are 5 unique types of molecules in this entry. The entry contains 12093 atoms, of which 0 are hydrogen and 0 are deuterium.

In the tables below, the ZeroOcc column contains the number of atoms modelled with zero occupancy, the AltConf column contains the number of residues with at least one atom in alternate conformation and the Trace column contains the number of residues modelled with at most 2 atoms.

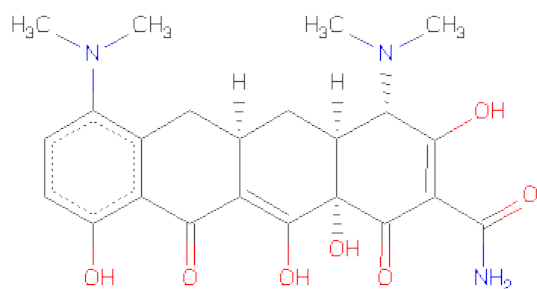
- Molecule 1 is a protein called TetX2 protein.

Mol	Chain	Residues	Atoms					ZeroOcc	AltConf	Trace
1	A	367	Total	C	N	O	S	0	0	0
			2879	1827	491	549	12			
1	B	368	Total	C	N	O	S	0	0	0
			2900	1840	497	551	12			
1	C	368	Total	C	N	O	S	0	0	0
			2894	1837	494	551	12			
1	D	367	Total	C	N	O	S	0	0	0
			2886	1833	492	549	12			

There are 12 discrepancies between the modelled and reference sequences:

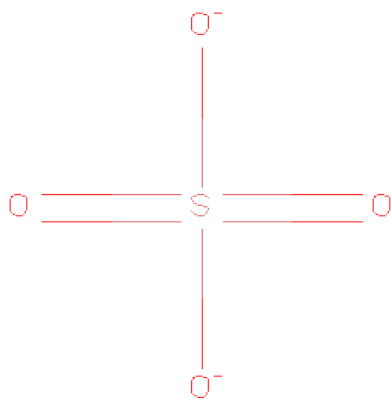
Chain	Residue	Modelled	Actual	Comment	Reference
A	94	LYS	GLU	ENGINEERED MUTATION	UNP Q93L51
A	266	LYS	GLU	ENGINEERED MUTATION	UNP Q93L51
A	280	ALA	THR	ENGINEERED MUTATION	UNP Q93L51
B	94	LYS	GLU	ENGINEERED MUTATION	UNP Q93L51
B	266	LYS	GLU	ENGINEERED MUTATION	UNP Q93L51
B	280	ALA	THR	ENGINEERED MUTATION	UNP Q93L51
C	94	LYS	GLU	ENGINEERED MUTATION	UNP Q93L51
C	266	LYS	GLU	ENGINEERED MUTATION	UNP Q93L51
C	280	ALA	THR	ENGINEERED MUTATION	UNP Q93L51
D	94	LYS	GLU	ENGINEERED MUTATION	UNP Q93L51
D	266	LYS	GLU	ENGINEERED MUTATION	UNP Q93L51
D	280	ALA	THR	ENGINEERED MUTATION	UNP Q93L51

- Molecule 2 is (4S,4AS,5AR,12AS)-4,7-BIS(DIMETHYLAMINO)-3,10,12,12A-TETRAHYDROXY-1,11-DIOXO-1,4,4A,5,5A,6,11,12A-OCTAHYDROTETRACENE-2-CARBOXAMIDE (three-letter code: MIY) (formula: C<sub>23</sub>H<sub>27</sub>N<sub>3</sub>O<sub>7</sub>).



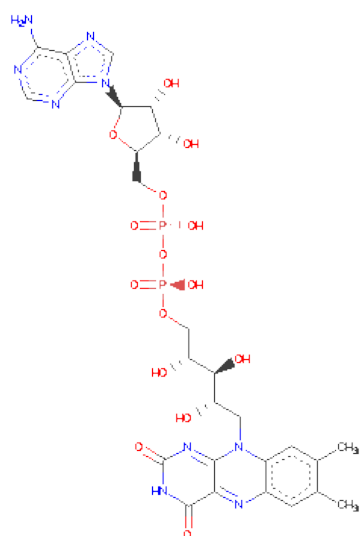
Mol	Chain	Residues	Atoms				ZeroOcc	AltConf
2	A	1	Total	C	N	O	0	0
			33	23	3	7		
2	B	1	Total	C	N	O	0	0
			33	23	3	7		
2	C	1	Total	C	N	O	0	0
			33	23	3	7		
2	D	1	Total	C	N	O	0	0
			33	23	3	7		

- Molecule 3 is SULFATE ION (three-letter code: SO4) (formula: O<sub>4</sub>S).



Mol	Chain	Residues	Atoms	ZeroOcc	AltConf
3	A	1	Total O S 5 4 1	0	0
3	A	1	Total O S 5 4 1	0	0
3	B	1	Total O S 5 4 1	0	0
3	B	1	Total O S 5 4 1	0	0
3	C	1	Total O S 5 4 1	0	0
3	C	1	Total O S 5 4 1	0	0
3	D	1	Total O S 5 4 1	0	0
3	D	1	Total O S 5 4 1	0	0

- Molecule 4 is FLAVIN-ADENINE DINUCLEOTIDE (three-letter code: FAD) (formula:  $C_{27}H_{33}N_9O_{15}P_2$ ).



Mol	Chain	Residues	Atoms	ZeroOcc	AltConf
4	A	1	Total C N O P 53 27 9 15 2	0	0
4	B	1	Total C N O P 53 27 9 15 2	0	0
4	C	1	Total C N O P 53 27 9 15 2	0	0

*Continued on next page...*

*Continued from previous page...*

Mol	Chain	Residues	Atoms					ZeroOcc	AltConf
4	D	1	Total	C	N	O	P	0	0
			53	27	9	15	2		

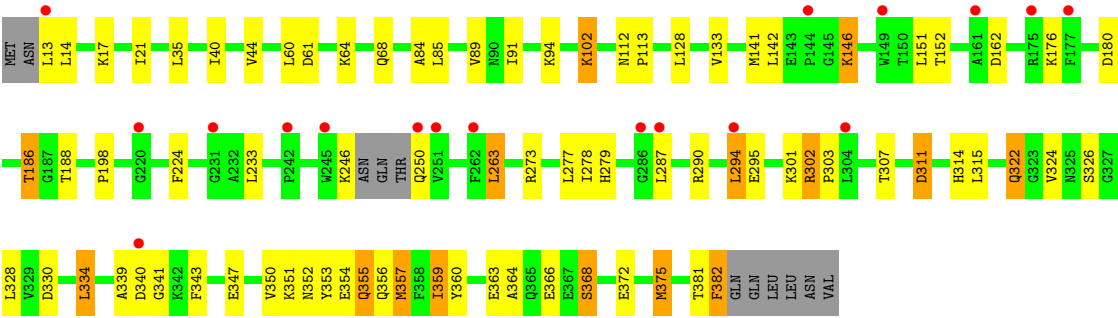
- Molecule 5 is water.

Mol	Chain	Residues	Atoms		ZeroOcc	AltConf
5	A	29	Total	O	0	0
			29	29		
5	B	50	Total	O	0	0
			50	50		
5	C	39	Total	O	0	0
			39	39		
5	D	32	Total	O	0	0
			32	32		



● Molecule 1: TetX2 protein

Chain D:





## 4 Data and refinement statistics

Property	Value	Source
Space group	P 1	Depositor
Cell constants a, b, c, $\alpha$ , $\beta$ , $\gamma$	68.43Å 80.10Å 87.36Å 111.11° 90.10° 93.01°	Depositor
Resolution (Å)	49.30 – 2.70 49.30 – 2.70	Depositor EDS
% Data completeness (in resolution range)	87.0 (49.30-2.70) 87.1 (49.30-2.70)	Depositor EDS
$R_{merge}$	0.07	Depositor
$R_{sym}$	(Not available)	Depositor
$\langle I/\sigma(I) \rangle$ <sup>1</sup>	0.57 (at 2.69Å)	Xtriage
Refinement program	PHENIX (phenix.refine: 1.7.2_869)	Depositor
R, $R_{free}$	0.221 , 0.276 0.219 , 0.274	Depositor DCC
$R_{free}$ test set	1895 reflections (4.61%)	DCC
Wilson B-factor (Å <sup>2</sup> )	46.5	Xtriage
Anisotropy	0.339	Xtriage
Bulk solvent $k_{sol}$ (e/Å <sup>3</sup> ), $B_{sol}$ (Å <sup>2</sup> )	0.33 , 33.2	EDS
Estimated twinning fraction	No twinning to report.	Xtriage
L-test for twinning	$\langle  L  \rangle = 0.49$ , $\langle L^2 \rangle = 0.32$	Xtriage
Outliers	0 of 43415 reflections	Xtriage
$F_o, F_c$ correlation	0.92	EDS
Total number of atoms	12093	wwPDB-VP
Average B, all atoms (Å <sup>2</sup> )	52.0	wwPDB-VP

Xtriage's analysis on translational NCS is as follows: *The largest off-origin peak in the Patterson function is 5.54% of the height of the origin peak. No significant pseudotranslation is detected.*

<sup>1</sup>Intensities estimated from amplitudes.

## 5 Model quality i

### 5.1 Standard geometry i

Bond lengths and bond angles in the following residue types are not validated in this section: MIY, SO4, FAD

The Z score for a bond length (or angle) is the number of standard deviations the observed value is removed from the expected value. A bond length (or angle) with  $|Z| > 5$  is considered an outlier worth inspection. RMSZ is the root-mean-square of all Z scores of the bond lengths (or angles).

Mol	Chain	Bond lengths		Bond angles	
		RMSZ	$\# Z  > 5$	RMSZ	$\# Z  > 5$
1	A	0.43	0/2937	0.57	0/3971
1	B	0.45	0/2958	0.58	0/3997
1	C	0.44	0/2952	0.58	1/3990 (0.0%)
1	D	0.43	0/2944	0.57	0/3979
All	All	0.44	0/11791	0.58	1/15937 (0.0%)

There are no bond length outliers.

All (1) bond angle outliers are listed below:

Mol	Chain	Res	Type	Atoms	Z	Observed(°)	Ideal(°)
1	C	13	LEU	CA-CB-CG	5.02	126.84	115.30

There are no chirality outliers.

There are no planarity outliers.

### 5.2 Close contacts i

In the following table, the Non-H and H(model) columns list the number of non-hydrogen atoms and hydrogen atoms in the chain respectively. The H(added) column lists the number of hydrogens added by MolProbity. The Clashes column lists the number of clashes within the asymmetric unit, and the number in parentheses is this value normalized per 1000 atoms of the molecule in the chain. The Symm-Clashes column gives symmetry related clashes, in the same way as for the Clashes column.

Mol	Chain	Non-H	H(model)	H(added)	Clashes	Symm-Clashes
1	A	2879	0	2828	39	0
1	B	2900	0	2865	40	0
1	C	2894	0	2854	43	0
1	D	2886	0	2848	43	0

*Continued on next page...*

*Continued from previous page...*

Mol	Chain	Non-H	H(model)	H(added)	Clashes	Symm-Clashes
2	A	33	0	25	3	0
2	B	33	0	25	2	0
2	C	33	0	25	3	0
2	D	33	0	25	6	0
3	A	10	0	0	0	0
3	B	10	0	0	3	0
3	C	10	0	0	3	0
3	D	10	0	0	0	0
4	A	53	0	31	3	0
4	B	53	0	31	3	0
4	C	53	0	31	3	0
4	D	53	0	31	3	0
5	A	29	0	0	4	0
5	B	50	0	0	3	0
5	C	39	0	0	4	0
5	D	32	0	0	3	0
All	All	12093	0	11619	179	0

Clashscore is defined as the number of clashes calculated for the entry per 1000 atoms (including hydrogens) of the entry. The overall clashscore for this entry is 8.

All (179) close contacts within the same asymmetric unit are listed below.

Atom-1	Atom-2	Distance(Å)	Clash(Å)
1:B:107:GLU:HG3	1:D:359:ILE:HD11	1.51	0.90
1:C:322:GLN:O	5:C:2139:HOH:O	1.89	0.88
1:A:322:GLN:O	5:A:2129:HOH:O	2.07	0.72
1:B:322:GLN:O	5:B:2149:HOH:O	2.11	0.69
1:C:84:ALA:HB1	1:C:113:PRO:HB2	1.74	0.68
1:D:322:GLN:O	5:D:2132:HOH:O	2.11	0.67
1:B:84:ALA:HB1	1:B:113:PRO:HB2	1.75	0.67
1:B:54:ARG:NH1	3:B:2002:SO4:O2	2.31	0.64
1:C:54:ARG:NH1	3:C:2002:SO4:O1	2.31	0.63
1:A:21:ILE:HB	1:A:44:VAL:HG22	1.81	0.61
1:C:314:HIS:NE2	1:C:330:ASP:OD2	2.33	0.60
1:A:343:PHE:HZ	1:A:352:ASN:HD22	1.48	0.60
1:A:263:LEU:HB3	1:A:278:ILE:HD13	1.83	0.59
1:D:84:ALA:HB1	1:D:113:PRO:HB2	1.83	0.59
1:B:314:HIS:NE2	1:B:330:ASP:OD2	2.34	0.59
1:A:78:GLN:HB3	5:A:2116:HOH:O	2.01	0.59
1:A:84:ALA:HB1	1:A:113:PRO:HB2	1.83	0.58
1:A:314:HIS:NE2	1:A:330:ASP:OD2	2.33	0.58
1:B:21:ILE:HB	1:B:44:VAL:HG22	1.84	0.58

*Continued on next page...*

*Continued from previous page...*

Atom-1	Atom-2	Distance(Å)	Clash(Å)
1:B:41:ASP:OD1	5:B:2126:HOH:O	2.16	0.58
1:D:263:LEU:HB3	1:D:278:ILE:HD13	1.85	0.58
1:D:314:HIS:NE2	1:D:330:ASP:OD2	2.34	0.57
1:C:21:ILE:HB	1:C:44:VAL:HG22	1.85	0.57
1:C:343:PHE:HZ	1:C:352:ASN:HD22	1.51	0.56
1:D:21:ILE:HB	1:D:44:VAL:HG22	1.88	0.56
1:A:269:ASP:HB2	5:A:2125:HOH:O	2.04	0.56
1:A:339:ALA:O	1:A:341:GLY:N	2.39	0.56
2:A:2001:MIY:O6	4:A:2004:FAD:O4	2.24	0.56
1:D:339:ALA:O	1:D:341:GLY:N	2.40	0.55
1:B:343:PHE:HZ	1:B:352:ASN:HD22	1.54	0.55
1:B:91:ILE:HD13	1:B:382:PHE:HB3	1.89	0.55
1:B:95:LYS:HE3	1:C:370:GLN:HG2	1.88	0.55
1:D:343:PHE:HZ	1:D:352:ASN:HD22	1.53	0.55
1:B:64:LYS:HA	1:B:68:GLN:HB2	1.88	0.55
1:C:91:ILE:HD13	1:C:382:PHE:HB3	1.90	0.54
1:C:339:ALA:O	1:C:341:GLY:N	2.40	0.54
1:A:198:PRO:HB3	1:A:233:LEU:HB2	1.90	0.54
1:B:339:ALA:O	1:B:341:GLY:N	2.40	0.54
1:D:198:PRO:HB3	1:D:233:LEU:HB2	1.90	0.54
1:A:64:LYS:HA	1:A:68:GLN:HB2	1.90	0.54
1:D:64:LYS:HA	1:D:68:GLN:HB2	1.90	0.54
1:C:54:ARG:NH1	3:C:2002:SO4:S	2.82	0.53
1:B:263:LEU:HB3	1:B:278:ILE:HD13	1.90	0.53
4:C:2004:FAD:H2'	4:C:2004:FAD:N1	2.22	0.53
1:C:54:ARG:NH1	3:C:2002:SO4:O3	2.42	0.52
1:C:186:THR:HG22	1:C:188:THR:H	1.74	0.52
1:A:60:LEU:HD13	1:A:324:VAL:HG21	1.90	0.52
4:D:2004:FAD:N1	4:D:2004:FAD:H2'	2.23	0.52
1:C:64:LYS:HA	1:C:68:GLN:HB2	1.90	0.52
1:C:198:PRO:HB3	1:C:233:LEU:HB2	1.92	0.52
1:D:91:ILE:HD13	1:D:382:PHE:HB3	1.92	0.52
1:B:180:ASP:N	1:B:180:ASP:OD1	2.42	0.51
1:C:263:LEU:HB3	1:C:278:ILE:HD13	1.93	0.51
1:D:61:ASP:HB2	1:D:112:ASN:HB2	1.92	0.50
1:D:186:THR:HG22	1:D:188:THR:H	1.75	0.50
1:A:61:ASP:HB2	1:A:112:ASN:HB2	1.92	0.50
1:B:60:LEU:HD13	1:B:324:VAL:HG21	1.93	0.50
1:A:180:ASP:N	1:A:180:ASP:OD1	2.42	0.50
1:D:186:THR:N	5:D:2102:HOH:O	2.45	0.50
1:A:186:THR:N	5:A:2102:HOH:O	2.40	0.50
1:A:141:MET:HB3	1:A:152:THR:HB	1.94	0.49

*Continued on next page...*

*Continued from previous page...*

Atom-1	Atom-2	Distance(Å)	Clash(Å)
1:C:102:LYS:HB2	1:C:102:LYS:NZ	2.27	0.49
1:C:60:LEU:HD13	1:C:324:VAL:HG21	1.94	0.49
1:B:186:THR:HG22	1:B:188:THR:H	1.78	0.49
1:A:186:THR:HG22	1:A:188:THR:H	1.77	0.49
1:C:180:ASP:OD1	1:C:180:ASP:N	2.43	0.49
1:D:60:LEU:HD13	1:D:324:VAL:HG21	1.93	0.49
1:D:141:MET:HB3	1:D:152:THR:HB	1.95	0.48
1:B:198:PRO:HB3	1:B:233:LEU:HB2	1.95	0.48
1:A:343:PHE:HZ	1:A:352:ASN:ND2	2.09	0.48
1:C:343:PHE:HZ	1:C:352:ASN:ND2	2.11	0.48
1:B:61:ASP:HB2	1:B:112:ASN:HB2	1.93	0.48
1:A:91:ILE:HD13	1:A:382:PHE:HB3	1.95	0.48
1:C:117:ARG:NH2	4:C:2004:FAD:O2'	2.32	0.47
1:C:166:LEU:HB2	1:C:308:MET:HG2	1.97	0.47
1:D:343:PHE:HZ	1:D:352:ASN:ND2	2.11	0.47
1:B:141:MET:HB3	1:B:152:THR:HB	1.96	0.47
2:D:2001:MIY:H193	2:D:2001:MIY:O2	2.13	0.47
2:B:2001:MIY:O5	2:B:2001:MIY:O6	2.32	0.47
1:A:142:LEU:CD2	1:A:151:LEU:HD23	2.45	0.47
1:D:180:ASP:N	1:D:180:ASP:OD1	2.45	0.47
1:C:61:ASP:HB2	1:C:112:ASN:HB2	1.95	0.47
1:C:359:ILE:HG12	1:C:360:TYR:N	2.30	0.47
1:D:142:LEU:CD2	1:D:151:LEU:HD23	2.45	0.47
1:D:357:MET:HG2	5:D:2131:HOH:O	2.15	0.47
1:A:35:LEU:HD22	1:A:40:ILE:HD12	1.96	0.46
1:A:294:LEU:HD21	1:A:314:HIS:HB3	1.96	0.46
1:C:141:MET:HB3	1:C:152:THR:HB	1.97	0.46
1:D:102:LYS:HB2	1:D:102:LYS:NZ	2.30	0.46
4:A:2004:FAD:H2'	4:A:2004:FAD:N1	2.30	0.46
4:B:2004:FAD:N1	4:B:2004:FAD:H2'	2.29	0.46
1:B:54:ARG:NH1	3:B:2002:SO4:S	2.89	0.46
1:A:302:ARG:NH2	1:A:306:ILE:O	2.48	0.46
2:C:2001:MIY:O2	2:C:2001:MIY:O8	2.33	0.46
1:B:294:LEU:HD21	1:B:314:HIS:HB3	1.98	0.45
1:A:102:LYS:NZ	1:A:102:LYS:HB2	2.31	0.45
1:D:357:MET:HA	1:D:360:TYR:CE2	2.51	0.45
1:A:44:VAL:HB	1:A:133:VAL:HG22	1.99	0.45
1:B:295:GLU:HB2	1:B:296:LYS:H	1.57	0.45
1:D:311:ASP:HB2	4:D:2004:FAD:O2P	2.17	0.45
4:B:2004:FAD:H1'1	4:B:2004:FAD:H9	1.80	0.45
1:C:26:PRO:HG3	5:C:2118:HOH:O	2.16	0.45
1:D:359:ILE:HG12	1:D:360:TYR:N	2.32	0.45

*Continued on next page...*

*Continued from previous page...*

Atom-1	Atom-2	Distance(Å)	Clash(Å)
1:D:224:PHE:CD1	2:D:2001:MIY:H4	2.50	0.45
1:D:35:LEU:HD22	1:D:40:ILE:HD12	1.98	0.45
1:D:307:THR:HG21	1:D:334:LEU:HD11	1.98	0.45
1:A:302:ARG:HA	1:A:303:PRO:HD3	1.80	0.45
1:D:328:LEU:HA	1:D:328:LEU:HD23	1.82	0.45
1:C:116:ASN:HB3	1:C:119:ASP:OD2	2.16	0.45
1:B:372:GLU:O	1:B:376:PHE:HD2	2.00	0.45
1:B:146:LYS:H	1:B:146:LYS:HG3	1.52	0.44
1:B:343:PHE:HZ	1:B:352:ASN:ND2	2.15	0.44
1:A:328:LEU:HD23	1:A:328:LEU:HA	1.83	0.44
2:D:2001:MIY:H5	2:D:2001:MIY:H203	1.70	0.44
1:B:102:LYS:NZ	1:B:102:LYS:HB2	2.31	0.44
1:D:302:ARG:HA	1:D:303:PRO:HD3	1.80	0.44
1:D:375:MET:HG2	1:D:375:MET:H	1.50	0.44
1:B:17:LYS:HB3	1:B:162:ASP:CG	2.38	0.44
1:C:186:THR:N	5:C:2102:HOH:O	2.47	0.44
2:D:2001:MIY:O6	4:D:2004:FAD:O4	2.36	0.44
2:B:2001:MIY:O6	4:B:2004:FAD:O4	2.36	0.44
1:C:17:LYS:HB3	1:C:162:ASP:CG	2.38	0.44
1:D:294:LEU:HD21	1:D:314:HIS:HB3	1.99	0.43
1:C:93:ASP:OD2	1:C:97:ASN:ND2	2.50	0.43
1:B:166:LEU:HB2	1:B:308:MET:HG2	2.01	0.43
1:D:290:ARG:HB2	1:D:315:LEU:HD21	2.00	0.43
1:C:142:LEU:HD23	1:C:142:LEU:HA	1.83	0.43
2:A:2001:MIY:O5	2:A:2001:MIY:O6	2.33	0.43
2:D:2001:MIY:O5	2:D:2001:MIY:O6	2.37	0.43
1:A:359:ILE:HG12	1:A:360:TYR:N	2.34	0.43
1:B:359:ILE:HG12	1:B:360:TYR:N	2.34	0.43
1:C:263:LEU:HA	1:C:263:LEU:HD12	1.81	0.43
1:B:302:ARG:HA	1:B:303:PRO:HD3	1.81	0.43
1:D:356:GLN:HA	1:D:359:ILE:HD13	2.01	0.43
1:B:116:ASN:HB3	1:B:119:ASP:OD2	2.19	0.43
1:B:107:GLU:HG3	1:D:359:ILE:CD1	2.35	0.42
2:C:2001:MIY:H192	4:C:2004:FAD:H6	2.00	0.42
1:B:375:MET:H	1:B:375:MET:HG2	1.51	0.42
1:A:363:GLU:O	1:A:366:GLU:HB2	2.19	0.42
1:B:44:VAL:HB	1:B:133:VAL:HG22	2.02	0.42
1:C:372:GLU:O	1:C:376:PHE:HD2	2.02	0.42
1:C:146:LYS:HG3	1:C:146:LYS:H	1.54	0.42
1:A:364:ALA:O	1:A:368:SER:OG	2.37	0.42
1:C:307:THR:HG21	1:C:334:LEU:HD11	2.00	0.42
1:A:311:ASP:OD1	4:A:2004:FAD:O3'	2.28	0.42

*Continued on next page...*

*Continued from previous page...*

Atom-1	Atom-2	Distance(Å)	Clash(Å)
1:A:375:MET:H	1:A:375:MET:HG2	1.52	0.42
1:D:351:LYS:HE2	1:D:355:GLN:OE1	2.19	0.42
1:A:224:PHE:CD1	2:A:2001:MIY:H4	2.54	0.42
1:D:64:LYS:H	1:D:64:LYS:HG2	1.62	0.42
1:B:137:ARG:NH1	3:B:2003:SO4:O3	2.44	0.42
1:C:44:VAL:HB	1:C:133:VAL:HG22	2.02	0.42
1:B:142:LEU:CD2	1:B:151:LEU:HD23	2.49	0.42
1:C:240:LYS:HG3	5:C:2111:HOH:O	2.19	0.42
1:C:35:LEU:HD22	1:C:40:ILE:HD12	2.01	0.41
2:C:2001:MIY:H712	2:C:2001:MIY:H11	1.81	0.41
1:D:364:ALA:O	1:D:368:SER:OG	2.39	0.41
1:C:294:LEU:HD21	1:C:314:HIS:HB3	2.02	0.41
1:B:35:LEU:HD22	1:B:40:ILE:HD12	2.01	0.41
1:C:84:ALA:CB	1:C:113:PRO:HB2	2.46	0.41
1:D:44:VAL:HB	1:D:133:VAL:HG22	2.03	0.41
1:A:357:MET:HA	1:A:360:TYR:CE2	2.55	0.41
1:A:307:THR:HG21	1:A:334:LEU:HD11	2.02	0.41
1:A:372:GLU:O	1:A:376:PHE:HD2	2.03	0.41
1:C:142:LEU:CD2	1:C:151:LEU:HD23	2.50	0.41
1:D:17:LYS:HB3	1:D:162:ASP:CG	2.40	0.41
1:D:350:VAL:O	1:D:354:GLU:HG3	2.21	0.41
1:C:129:GLU:O	1:C:132:THR:OG1	2.28	0.41
1:A:183:VAL:HG11	1:A:290:ARG:HD3	2.03	0.41
1:D:363:GLU:O	1:D:366:GLU:HB2	2.21	0.41
1:D:357:MET:HA	1:D:360:TYR:CZ	2.56	0.40
1:C:233:LEU:HD22	1:C:277:LEU:HD21	2.03	0.40
1:D:347:GLU:N	1:D:347:GLU:OE1	2.52	0.40
1:B:84:ALA:CB	1:B:113:PRO:HB2	2.46	0.40
1:A:17:LYS:HB3	1:A:162:ASP:CG	2.41	0.40
1:B:73:LYS:NZ	5:B:2116:HOH:O	2.54	0.40
1:C:375:MET:H	1:C:375:MET:HG2	1.51	0.40
1:A:199:GLU:OE1	1:A:199:GLU:N	2.30	0.40
1:B:93:ASP:OD2	1:B:97:ASN:ND2	2.51	0.40
2:D:2001:MIY:H11	2:D:2001:MIY:H712	1.84	0.40

There are no symmetry-related clashes.

## 5.3 Torsion angles

### 5.3.1 Protein backbone ⓘ

In the following table, the Percentiles column shows the percent Ramachandran outliers of the chain as a percentile score with respect to all X-ray entries followed by that with respect to entries of similar resolution. The Analysed column shows the number of residues for which the backbone conformation was analysed, and the total number of residues.

Mol	Chain	Analysed	Favoured	Allowed	Outliers	Percentiles	
1	A	363/378 (96%)	335 (92%)	26 (7%)	2 (1%)	33	66
1	B	364/378 (96%)	334 (92%)	28 (8%)	2 (0%)	38	70
1	C	364/378 (96%)	334 (92%)	27 (7%)	3 (1%)	27	58
1	D	363/378 (96%)	334 (92%)	27 (7%)	2 (1%)	33	66
All	All	1454/1512 (96%)	1337 (92%)	108 (7%)	9 (1%)	33	66

All (9) Ramachandran outliers are listed below:

Mol	Chain	Res	Type
1	A	340	ASP
1	B	340	ASP
1	C	340	ASP
1	D	340	ASP
1	A	146	LYS
1	C	146	LYS
1	D	146	LYS
1	B	146	LYS
1	C	246	LYS

### 5.3.2 Protein sidechains ⓘ

In the following table, the Percentiles column shows the percent sidechain outliers of the chain as a percentile score with respect to all X-ray entries followed by that with respect to entries of similar resolution. The Analysed column shows the number of residues for which the sidechain conformation was analysed, and the total number of residues.

Mol	Chain	Analysed	Rotameric	Outliers	Percentiles	
1	A	311/327 (95%)	278 (89%)	33 (11%)	10	22
1	B	315/327 (96%)	282 (90%)	33 (10%)	10	22
1	C	314/327 (96%)	281 (90%)	33 (10%)	10	22
1	D	313/327 (96%)	279 (89%)	34 (11%)	9	21

*Continued on next page...*



*Continued from previous page...*

Mol	Chain	Analysed	Rotameric	Outliers	Percentiles	
All	All	1253/1308 (96%)	1120 (89%)	133 (11%)	10	22

All (133) residues with a non-rotameric sidechain are listed below:

Mol	Chain	Res	Type
1	A	14	LEU
1	A	85	LEU
1	A	89	VAL
1	A	94	LYS
1	A	102	LYS
1	A	128	LEU
1	A	146	LYS
1	A	176	LYS
1	A	186	THR
1	A	233	LEU
1	A	250	GLN
1	A	263	LEU
1	A	273	ARG
1	A	277	LEU
1	A	279	HIS
1	A	287	LEU
1	A	294	LEU
1	A	295	GLU
1	A	301	LYS
1	A	302	ARG
1	A	311	ASP
1	A	322	GLN
1	A	326	SER
1	A	334	LEU
1	A	353	TYR
1	A	355	GLN
1	A	357	MET
1	A	359	ILE
1	A	368	SER
1	A	372	GLU
1	A	375	MET
1	A	381	THR
1	A	382	PHE
1	B	14	LEU
1	B	85	LEU
1	B	89	VAL
1	B	94	LYS

*Continued on next page...*

*Continued from previous page...*

Mol	Chain	Res	Type
1	B	99	LEU
1	B	102	LYS
1	B	128	LEU
1	B	146	LYS
1	B	176	LYS
1	B	186	THR
1	B	233	LEU
1	B	250	GLN
1	B	263	LEU
1	B	273	ARG
1	B	277	LEU
1	B	279	HIS
1	B	287	LEU
1	B	294	LEU
1	B	295	GLU
1	B	301	LYS
1	B	302	ARG
1	B	311	ASP
1	B	322	GLN
1	B	326	SER
1	B	334	LEU
1	B	353	TYR
1	B	355	GLN
1	B	357	MET
1	B	359	ILE
1	B	368	SER
1	B	375	MET
1	B	381	THR
1	B	382	PHE
1	C	14	LEU
1	C	85	LEU
1	C	89	VAL
1	C	94	LYS
1	C	102	LYS
1	C	128	LEU
1	C	146	LYS
1	C	176	LYS
1	C	186	THR
1	C	233	LEU
1	C	250	GLN
1	C	263	LEU
1	C	273	ARG

*Continued on next page...*

*Continued from previous page...*

Mol	Chain	Res	Type
1	C	277	LEU
1	C	279	HIS
1	C	287	LEU
1	C	294	LEU
1	C	295	GLU
1	C	301	LYS
1	C	302	ARG
1	C	311	ASP
1	C	322	GLN
1	C	326	SER
1	C	334	LEU
1	C	353	TYR
1	C	355	GLN
1	C	357	MET
1	C	359	ILE
1	C	368	SER
1	C	371	ASN
1	C	375	MET
1	C	381	THR
1	C	382	PHE
1	D	13	LEU
1	D	14	LEU
1	D	85	LEU
1	D	89	VAL
1	D	94	LYS
1	D	102	LYS
1	D	128	LEU
1	D	146	LYS
1	D	176	LYS
1	D	186	THR
1	D	246	LYS
1	D	250	GLN
1	D	263	LEU
1	D	273	ARG
1	D	277	LEU
1	D	279	HIS
1	D	287	LEU
1	D	294	LEU
1	D	295	GLU
1	D	301	LYS
1	D	302	ARG
1	D	311	ASP

*Continued on next page...*

*Continued from previous page...*

Mol	Chain	Res	Type
1	D	322	GLN
1	D	326	SER
1	D	334	LEU
1	D	353	TYR
1	D	355	GLN
1	D	357	MET
1	D	359	ILE
1	D	368	SER
1	D	372	GLU
1	D	375	MET
1	D	381	THR
1	D	382	PHE

Some sidechains can be flipped to improve hydrogen bonding and reduce clashes. All (7) such sidechains are listed below:

Mol	Chain	Res	Type
1	A	322	GLN
1	A	371	ASN
1	B	234	HIS
1	B	322	GLN
1	C	322	GLN
1	D	322	GLN
1	D	371	ASN

### 5.3.3 RNA ⓘ

There are no RNA chains in this entry.

## 5.4 Non-standard residues in protein, DNA, RNA chains ⓘ

There are no non-standard protein/DNA/RNA residues in this entry.

## 5.5 Carbohydrates ⓘ

There are no carbohydrates in this entry.

## 5.6 Ligand geometry ⓘ

16 ligands are modelled in this entry.

In the following table, the Counts columns list the number of bonds (or angles) for which Mogul statistics could be retrieved, the number of bonds (or angles) that are observed in the model and the number of bonds (or angles) that are defined in the chemical component dictionary. The Link column lists molecule types, if any, to which the group is linked. The Z score for a bond length (or angle) is the number of standard deviations the observed value is removed from the expected value. A bond length (or angle) with  $|Z| > 2$  is considered an outlier worth inspection. RMSZ is the root-mean-square of all Z scores of the bond lengths (or angles).

Mol	Type	Chain	Res	Link	Bond lengths			Bond angles		
					Counts	RMSZ	# $ Z  > 2$	Counts	RMSZ	# $ Z  > 2$
2	MIY	A	2001	-	36,36,36	2.08	6 (16%)	58,58,58	1.75	8 (13%)
3	SO4	A	2002	-	4,4,4	0.11	0	6,6,6	0.14	0
3	SO4	A	2003	-	4,4,4	0.13	0	6,6,6	0.12	0
4	FAD	A	2004	-	58,58,58	1.33	6 (10%)	85,89,89	2.26	21 (24%)
2	MIY	B	2001	-	36,36,36	2.12	7 (19%)	58,58,58	2.08	16 (27%)
3	SO4	B	2002	-	4,4,4	0.10	0	6,6,6	0.08	0
3	SO4	B	2003	-	4,4,4	0.15	0	6,6,6	0.30	0
4	FAD	B	2004	-	58,58,58	1.43	7 (12%)	85,89,89	2.02	18 (21%)
2	MIY	C	2001	-	36,36,36	2.09	5 (13%)	58,58,58	2.05	15 (25%)
3	SO4	C	2002	-	4,4,4	0.08	0	6,6,6	0.26	0
3	SO4	C	2003	-	4,4,4	0.08	0	6,6,6	0.20	0
4	FAD	C	2004	-	58,58,58	1.46	8 (13%)	85,89,89	2.10	20 (23%)
2	MIY	D	2001	-	36,36,36	1.91	5 (13%)	58,58,58	2.25	14 (24%)
3	SO4	D	2002	-	4,4,4	0.12	0	6,6,6	0.19	0
3	SO4	D	2003	-	4,4,4	0.10	0	6,6,6	0.10	0
4	FAD	D	2004	-	58,58,58	1.39	7 (12%)	85,89,89	2.04	22 (25%)

In the following table, the Chirals column lists the number of chiral outliers, the number of chiral centers analysed, the number of these observed in the model and the number defined in the chemical component dictionary. Similar counts are reported in the Torsion and Rings columns. '-' means no outliers of that kind were identified.

Mol	Type	Chain	Res	Link	Chirals	Torsions	Rings
2	MIY	A	2001	-	-	0/12/70/70	0/0/4/4
3	SO4	A	2002	-	-	0/0/0/0	0/0/0/0
3	SO4	A	2003	-	-	0/0/0/0	0/0/0/0
4	FAD	A	2004	-	-	0/34/50/50	0/1/6/6
2	MIY	B	2001	-	-	0/12/70/70	0/0/4/4
3	SO4	B	2002	-	-	0/0/0/0	0/0/0/0
3	SO4	B	2003	-	-	0/0/0/0	0/0/0/0
4	FAD	B	2004	-	-	0/34/50/50	0/1/6/6
2	MIY	C	2001	-	-	0/12/70/70	0/0/4/4
3	SO4	C	2002	-	-	0/0/0/0	0/0/0/0

*Continued on next page...*

*Continued from previous page...*

Mol	Type	Chain	Res	Link	Chirals	Torsions	Rings
3	SO4	C	2003	-	-	0/0/0/0	0/0/0/0
4	FAD	C	2004	-	-	0/34/50/50	0/1/6/6
2	MIY	D	2001	-	-	0/12/70/70	0/0/4/4
3	SO4	D	2002	-	-	0/0/0/0	0/0/0/0
3	SO4	D	2003	-	-	0/0/0/0	0/0/0/0
4	FAD	D	2004	-	-	0/34/50/50	0/1/6/6

All (51) bond length outliers are listed below:

Mol	Chain	Res	Type	Atoms	Z	Observed(Å)	Ideal(Å)
2	C	2001	MIY	C10-C9	8.95	1.50	1.40
2	A	2001	MIY	C10-C9	8.48	1.50	1.40
2	B	2001	MIY	C10-C9	8.23	1.49	1.40
2	D	2001	MIY	C10-C9	7.73	1.49	1.40
2	A	2001	MIY	C14-C9	5.17	1.48	1.40
2	C	2001	MIY	C14-C9	5.01	1.48	1.40
2	B	2001	MIY	C14-C9	4.89	1.48	1.40
2	A	2001	MIY	C14-C13	4.87	1.50	1.41
2	D	2001	MIY	C14-C9	4.77	1.48	1.40
2	B	2001	MIY	C14-C13	4.46	1.49	1.41
2	D	2001	MIY	C14-C13	4.35	1.49	1.41
4	C	2004	FAD	C4A-N9A	-4.28	1.31	1.37
2	C	2001	MIY	C14-C13	4.24	1.49	1.41
4	B	2004	FAD	C9A-C5X	4.14	1.51	1.42
4	C	2004	FAD	C9A-C5X	4.14	1.51	1.42
4	D	2004	FAD	C4-C4X	4.13	1.48	1.41
4	C	2004	FAD	C4X-C10	4.11	1.48	1.40
4	D	2004	FAD	C4X-C10	4.02	1.47	1.40
4	A	2004	FAD	C4X-C10	3.92	1.47	1.40
4	D	2004	FAD	C4A-N9A	-3.90	1.32	1.37
4	B	2004	FAD	C4X-C10	3.87	1.47	1.40
4	A	2004	FAD	C9A-C5X	3.76	1.50	1.42
4	B	2004	FAD	C4A-N9A	-3.61	1.32	1.37
4	B	2004	FAD	C4-C4X	3.60	1.47	1.41
2	B	2001	MIY	C18-C1	-3.56	1.49	1.55
4	D	2004	FAD	C9A-C5X	3.55	1.49	1.42
2	A	2001	MIY	C18-C1	-3.31	1.49	1.55
2	B	2001	MIY	C16-C17	-3.22	1.32	1.36
4	A	2004	FAD	C4A-N9A	-3.11	1.33	1.37
2	D	2001	MIY	C18-C1	-3.09	1.50	1.55
4	A	2004	FAD	C4-C4X	3.07	1.46	1.41
2	C	2001	MIY	C18-C1	-3.03	1.50	1.55

*Continued on next page...*

*Continued from previous page...*

Mol	Chain	Res	Type	Atoms	Z	Observed(Å)	Ideal(Å)
4	C	2004	FAD	C5A-C4A	2.85	1.46	1.40
4	D	2004	FAD	C5A-C4A	2.84	1.46	1.40
2	A	2001	MIY	C2-C3	-2.82	1.33	1.40
4	D	2004	FAD	C8-C7	2.81	1.49	1.40
4	A	2004	FAD	C8-C7	2.79	1.48	1.40
2	D	2001	MIY	C2-C3	-2.69	1.33	1.40
4	A	2004	FAD	C5A-C4A	2.67	1.46	1.40
4	B	2004	FAD	C8-C7	2.66	1.48	1.40
2	C	2001	MIY	C2-C3	-2.57	1.33	1.40
4	B	2004	FAD	C5A-C4A	2.54	1.46	1.40
4	C	2004	FAD	C9A-N10	2.54	1.42	1.38
4	B	2004	FAD	C1'-C2'	2.52	1.54	1.51
4	D	2004	FAD	C1'-C2'	2.47	1.53	1.51
4	C	2004	FAD	C4-N3	-2.33	1.33	1.37
2	B	2001	MIY	C2-C3	-2.32	1.34	1.40
2	B	2001	MIY	C18-C17	-2.22	1.49	1.52
4	C	2004	FAD	C8-C7	2.14	1.47	1.40
2	A	2001	MIY	C16-C17	-2.13	1.33	1.36
4	C	2004	FAD	C4-C4X	2.04	1.44	1.41

All (134) bond angle outliers are listed below:

Mol	Chain	Res	Type	Atoms	Z	Observed(°)	Ideal(°)
2	D	2001	MIY	C5-C18-C17	10.19	114.97	109.80
2	B	2001	MIY	C5-C18-C17	8.22	113.97	109.80
4	A	2004	FAD	C2-N1-C10	7.98	123.02	114.98
4	D	2004	FAD	C2-N1-C10	7.95	122.99	114.98
4	B	2004	FAD	C2-N1-C10	7.77	122.81	114.98
2	C	2001	MIY	C5-C18-C17	7.58	113.64	109.80
4	C	2004	FAD	C2-N1-C10	7.32	122.35	114.98
4	C	2004	FAD	N3A-C2A-N1A	-7.28	122.62	128.71
4	D	2004	FAD	N3A-C2A-N1A	-6.94	122.91	128.71
4	A	2004	FAD	N3A-C2A-N1A	-6.71	123.10	128.71
4	A	2004	FAD	C2'-C1'-N10	-6.70	103.56	112.45
4	B	2004	FAD	N3A-C2A-N1A	-6.46	123.31	128.71
2	A	2001	MIY	O6-C17-C16	-6.28	117.92	123.90
2	D	2001	MIY	O6-C17-C16	-6.15	118.05	123.90
2	A	2001	MIY	C5-C18-C17	5.63	112.66	109.80
4	A	2004	FAD	N3A-C4A-N9A	5.60	135.54	125.43
2	C	2001	MIY	O6-C17-C16	-5.43	118.73	123.90
4	A	2004	FAD	C4X-C10-N1	-5.14	117.60	122.73
2	C	2001	MIY	C6-C5-C4	-5.13	106.02	112.48

*Continued on next page...*

*Continued from previous page...*

Mol	Chain	Res	Type	Atoms	Z	Observed(°)	Ideal(°)
4	A	2004	FAD	C5'-C4'-C3'	-4.99	102.65	112.06
2	B	2001	MIY	O6-C17-C16	-4.88	119.26	123.90
4	C	2004	FAD	C5'-C4'-C3'	-4.87	102.87	112.06
4	A	2004	FAD	C8A-N9A-C4A	4.83	110.59	106.90
4	C	2004	FAD	C4X-C10-N1	-4.81	117.92	122.73
4	B	2004	FAD	N3A-C4A-N9A	4.78	134.06	125.43
4	D	2004	FAD	N3A-C4A-N9A	4.73	133.97	125.43
4	D	2004	FAD	C8A-N9A-C4A	4.72	110.50	106.90
4	D	2004	FAD	C2'-C1'-N10	-4.71	106.21	112.45
2	D	2001	MIY	C1-C18-C17	-4.67	104.17	109.79
4	B	2004	FAD	C2'-C1'-N10	-4.66	106.27	112.45
4	B	2004	FAD	C5'-C4'-C3'	-4.57	103.44	112.06
2	C	2001	MIY	C9-C10-N7	4.46	121.74	119.06
4	A	2004	FAD	O4B-C1B-N9A	4.31	112.45	108.44
4	C	2004	FAD	O4'-C4'-C5'	4.14	118.63	110.12
4	B	2004	FAD	C8A-N9A-C4A	4.14	110.06	106.90
4	D	2004	FAD	C4X-C10-N1	-4.02	118.71	122.73
4	C	2004	FAD	C4X-C10-N10	-4.02	118.50	120.51
4	C	2004	FAD	N3A-C4A-N9A	4.01	132.67	125.43
4	B	2004	FAD	C4A-C5A-N7A	-3.98	106.11	109.52
2	B	2001	MIY	C9-C10-N7	3.87	121.39	119.06
4	A	2004	FAD	C9A-N10-C10	-3.84	118.00	121.77
2	D	2001	MIY	O2-C3-C4	3.76	121.25	115.56
4	C	2004	FAD	C9A-N10-C10	-3.74	118.10	121.77
2	A	2001	MIY	C9-C10-N7	3.74	121.31	119.06
2	B	2001	MIY	C6-C5-C4	-3.69	107.83	112.48
4	C	2004	FAD	C1B-N9A-C4A	-3.69	120.27	126.64
2	B	2001	MIY	C6-C7-C8	-3.61	106.38	111.56
2	C	2001	MIY	C6-C7-C8	-3.59	106.40	111.56
4	C	2004	FAD	C4A-C5A-N7A	-3.45	106.57	109.52
4	D	2004	FAD	C4X-N5-C5X	3.45	120.56	116.69
4	C	2004	FAD	C8A-N9A-C4A	3.42	109.51	106.90
2	C	2001	MIY	C18-C5-C4	3.36	116.63	111.80
2	B	2001	MIY	C1-C18-C17	-3.34	105.76	109.79
2	D	2001	MIY	C6-C7-C8	-3.32	106.80	111.56
4	A	2004	FAD	C4X-N5-C5X	3.31	120.41	116.69
4	A	2004	FAD	C4X-C10-N10	-3.22	118.90	120.51
2	B	2001	MIY	C5-C18-C1	-3.20	107.19	111.07
2	C	2001	MIY	C1-C18-C17	-3.18	105.96	109.79
4	B	2004	FAD	C4X-C10-N1	-3.17	119.57	122.73
4	D	2004	FAD	C9A-N10-C10	-3.16	118.66	121.77
4	D	2004	FAD	C5X-C9A-N10	3.12	119.87	116.80

*Continued on next page...*



*Continued from previous page...*

Mol	Chain	Res	Type	Atoms	Z	Observed(°)	Ideal(°)
4	C	2004	FAD	C5X-C9A-N10	3.03	119.78	116.80
2	B	2001	MIY	C11-C12-C13	2.97	123.72	120.50
2	A	2001	MIY	O6-C17-C18	2.91	118.29	113.57
4	C	2004	FAD	N1-C10-N10	2.89	123.56	115.97
4	B	2004	FAD	C9A-N10-C10	-2.88	118.94	121.77
4	B	2004	FAD	C4X-N5-C5X	2.87	119.91	116.69
4	A	2004	FAD	N1-C10-N10	2.86	123.49	115.97
4	C	2004	FAD	C2'-C1'-N10	-2.83	108.70	112.45
4	D	2004	FAD	O4B-C1B-N9A	2.81	111.06	108.44
2	D	2001	MIY	C21-C2-C1	-2.81	118.03	121.05
4	A	2004	FAD	C5X-C9A-N10	2.79	119.55	116.80
2	B	2001	MIY	C18-C5-C4	2.77	115.78	111.80
4	B	2004	FAD	C1'-N10-C9A	2.76	121.55	118.87
4	D	2004	FAD	C4B-O4B-C1B	-2.74	106.78	109.75
2	C	2001	MIY	C5-C4-N1	2.70	115.08	110.45
4	A	2004	FAD	C4B-O4B-C1B	-2.69	106.82	109.75
4	A	2004	FAD	C5A-C4A-N3A	-2.68	119.86	125.70
4	D	2004	FAD	C4X-C10-N10	-2.67	119.17	120.51
4	B	2004	FAD	C5A-C4A-N3A	-2.65	119.94	125.70
4	C	2004	FAD	C4X-N5-C5X	2.62	119.63	116.69
4	A	2004	FAD	C2B-C1B-N9A	-2.61	106.57	113.27
4	D	2004	FAD	C1B-N9A-C4A	-2.57	122.19	126.64
4	A	2004	FAD	C4A-C5A-N7A	-2.56	107.33	109.52
2	A	2001	MIY	O2-C3-C4	2.56	119.42	115.56
4	C	2004	FAD	O4B-C1B-N9A	2.55	110.81	108.44
4	B	2004	FAD	C5X-C9A-N10	2.51	119.27	116.80
4	C	2004	FAD	C10-C4X-N5	2.50	123.49	120.45
2	C	2001	MIY	C71-N7-CN7	-2.47	107.26	115.78
2	C	2001	MIY	O2-C3-C4	2.47	119.29	115.56
2	A	2001	MIY	C71-N7-CN7	-2.47	107.30	115.78
4	B	2004	FAD	C1B-N9A-C4A	-2.45	122.41	126.64
2	A	2001	MIY	C3-C4-N1	-2.44	107.83	113.34
2	D	2001	MIY	O6-C17-C18	2.44	117.52	113.57
4	B	2004	FAD	P-O3P-PA	-2.43	124.55	131.68
2	D	2001	MIY	C5-C4-N1	2.43	114.62	110.45
2	B	2001	MIY	O6-C17-C18	2.39	117.44	113.57
2	D	2001	MIY	C6-C5-C4	-2.39	109.47	112.48
4	A	2004	FAD	C1'-N10-C9A	2.37	121.18	118.87
4	B	2004	FAD	C4X-C10-N10	-2.37	119.33	120.51
4	B	2004	FAD	C2A-N3A-C4A	2.35	120.70	114.01
2	B	2001	MIY	C21-C2-C1	-2.33	118.54	121.05
4	D	2004	FAD	N1-C10-N10	2.33	122.10	115.97

*Continued on next page...*

*Continued from previous page...*

Mol	Chain	Res	Type	Atoms	Z	Observed(°)	Ideal(°)
2	B	2001	MIY	C5-C4-N1	2.32	114.42	110.45
4	D	2004	FAD	O3P-PA-O5B	-2.30	93.10	103.41
4	D	2004	FAD	C2A-N1A-C6A	2.29	122.91	118.77
4	C	2004	FAD	C2A-N3A-C4A	2.29	120.52	114.01
4	C	2004	FAD	C5A-C4A-N3A	-2.25	120.79	125.70
2	C	2001	MIY	C11-C12-C13	2.25	122.94	120.50
2	B	2001	MIY	O2-C3-C4	2.24	118.95	115.56
2	C	2001	MIY	O8-C21-C2	-2.24	117.05	120.50
2	B	2001	MIY	C71-N7-CN7	-2.23	108.12	115.78
4	A	2004	FAD	C2A-N3A-C4A	2.22	120.34	114.01
2	C	2001	MIY	O2-C3-C2	-2.21	119.23	122.78
4	A	2004	FAD	O3P-P-O5'	-2.17	93.71	103.41
4	B	2004	FAD	O4'-C4'-C5'	2.16	114.56	110.12
2	B	2001	MIY	C6-C5-C18	-2.16	106.00	109.52
2	D	2001	MIY	C21-C2-C3	2.15	123.11	118.44
4	D	2004	FAD	C2B-C1B-N9A	-2.14	107.77	113.27
4	D	2004	FAD	O2A-PA-O3P	2.12	115.20	105.14
2	D	2001	MIY	O7-C18-C5	-2.10	107.42	110.08
2	C	2001	MIY	C5-C4-C3	2.10	116.02	111.03
2	D	2001	MIY	O7-C18-C1	2.10	111.93	107.27
4	D	2004	FAD	C4'-C3'-C2'	-2.09	108.53	113.25
4	C	2004	FAD	C2A-N1A-C6A	2.09	122.54	118.77
2	D	2001	MIY	C9-C10-N7	2.08	120.31	119.06
2	C	2001	MIY	O6-C17-C18	2.07	116.92	113.57
2	A	2001	MIY	C71-N7-C10	-2.06	108.83	115.17
2	D	2001	MIY	C11-C12-C13	2.05	122.73	120.50
4	D	2004	FAD	C5'-C4'-C3'	-2.03	108.22	112.06
2	B	2001	MIY	C13-C14-C15	2.03	124.31	121.16
4	D	2004	FAD	C5A-C4A-N3A	-2.03	121.29	125.70
4	D	2004	FAD	C4A-C5A-N7A	-2.02	107.79	109.52
4	A	2004	FAD	C5B-C4B-C3B	-2.02	107.14	115.21

There are no chirality outliers.

There are no torsion outliers.

There are no ring outliers.

## 5.7 Other polymers ⓘ

There are no such residues in this entry.

## 5.8 Polymer linkage issues

There are no chain breaks in this entry.

## 6 Fit of model and data ⓘ

### 6.1 Protein, DNA and RNA chains ⓘ

In the following table, the column labelled ‘#RSRZ > 2’ contains the number (and percentage) of RSRZ outliers, followed by percent RSRZ outliers for the chain as percentile scores relative to all X-ray entries and entries of similar resolution. The OWAB column contains the minimum, median, 95<sup>th</sup> percentile and maximum values of the occupancy-weighted average B-factor per residue. The column labelled ‘Q < 0.9’ lists the number of (and percentage) of residues with an average occupancy less than 0.9.

Mol	Chain	Analysed	<RSRZ>	#RSRZ>2	OWAB(Å <sup>2</sup> )	Q<0.9
1	A	367/378 (97%)	0.18	14 (3%) 38 43	30, 49, 81, 110	0
1	B	368/378 (97%)	0.14	12 (3%) 44 49	28, 47, 81, 115	0
1	C	368/378 (97%)	0.24	16 (4%) 34 38	28, 48, 81, 115	0
1	D	367/378 (97%)	0.24	18 (4%) 28 31	30, 49, 82, 112	0
All	All	1470/1512 (97%)	0.20	60 (4%) 36 40	28, 48, 82, 115	0

All (60) RSRZ outliers are listed below:

Mol	Chain	Res	Type	RSRZ
1	C	378	PRO	5.8
1	B	378	PRO	5.3
1	C	247	ASN	5.1
1	A	300	SER	3.9
1	D	262	PHE	3.6
1	C	382	PHE	3.5
1	B	13	LEU	3.4
1	D	220	GLY	3.3
1	B	247	ASN	3.3
1	C	338	LEU	3.2
1	C	13	LEU	3.2
1	C	262	PHE	3.1
1	C	163	LEU	3.1
1	C	243	ASP	3.1
1	D	13	LEU	3.0
1	B	377	LYS	3.0
1	D	245	TRP	2.9
1	B	286	GLY	2.8
1	D	144	PRO	2.8
1	A	177	PHE	2.7
1	D	250	GLN	2.7

*Continued on next page...*

*Continued from previous page...*

Mol	Chain	Res	Type	RSRZ
1	D	340	ASP	2.7
1	D	287	LEU	2.6
1	A	251	VAL	2.6
1	D	286	GLY	2.6
1	D	161	ALA	2.6
1	B	267	PHE	2.6
1	D	177	PHE	2.5
1	C	162	ASP	2.4
1	A	162	ASP	2.4
1	B	338	LEU	2.4
1	A	178	VAL	2.4
1	A	294	LEU	2.4
1	C	245	TRP	2.4
1	C	377	LYS	2.4
1	C	267	PHE	2.3
1	A	261	ASP	2.3
1	D	294	LEU	2.3
1	D	304	LEU	2.3
1	D	242	PRO	2.3
1	A	249	THR	2.2
1	A	343	PHE	2.2
1	C	102	LYS	2.2
1	B	149	TRP	2.2
1	B	287	LEU	2.2
1	D	175	ARG	2.2
1	A	264	LEU	2.2
1	C	264	LEU	2.1
1	C	379	ASP	2.1
1	A	265	LYS	2.1
1	A	262	PHE	2.1
1	A	381	THR	2.1
1	C	18	ASN	2.1
1	D	149	TRP	2.0
1	D	251	VAL	2.0
1	B	275	LYS	2.0
1	B	351	LYS	2.0
1	D	231	GLY	2.0
1	B	382	PHE	2.0
1	A	287	LEU	2.0

## 6.2 Non-standard residues in protein, DNA, RNA chains ⓘ

There are no non-standard protein/DNA/RNA residues in this entry.

## 6.3 Carbohydrates ⓘ

There are no carbohydrates in this entry.

## 6.4 Ligands ⓘ

In the following table, the Atoms column lists the number of modelled atoms in the group and the number defined in the chemical component dictionary. LLDF column lists the quality of electron density of the group with respect to its neighbouring residues in protein, DNA or RNA chains. The B-factors column lists the minimum, median, 95<sup>th</sup> percentile and maximum values of B factors of atoms in the group. The column labelled 'Q< 0.9' lists the number of atoms with occupancy less than 0.9.

Mol	Type	Chain	Res	Atoms	RSR	LLDF	B-factors(Å <sup>2</sup> )	Q<0.9
3	SO4	C	2003	5/5	0.18	4.27	43,52,87,90	0
3	SO4	B	2003	5/5	0.17	3.13	52,63,74,83	0
2	MIY	B	2001	33/33	0.25	1.17	39,66,76,88	0
2	MIY	D	2001	33/33	0.25	1.16	49,67,84,86	0
3	SO4	D	2003	5/5	0.18	0.98	68,72,83,93	0
2	MIY	A	2001	33/33	0.23	0.94	50,68,82,91	0
2	MIY	C	2001	33/33	0.27	0.94	48,73,86,91	0
3	SO4	A	2002	5/5	0.19	0.92	63,65,86,98	0
4	FAD	C	2004	53/53	0.16	-0.36	20,38,51,60	0
4	FAD	B	2004	53/53	0.14	-0.60	21,35,53,66	0
4	FAD	D	2004	53/53	0.14	-0.67	25,41,59,71	0
4	FAD	A	2004	53/53	0.13	-0.75	24,38,65,74	0
3	SO4	A	2003	5/5	0.13	-0.92	67,69,77,107	0
3	SO4	B	2002	5/5	0.11	-1.21	68,74,87,90	0
3	SO4	D	2002	5/5	0.13	-1.84	63,66,91,112	0
3	SO4	C	2002	5/5	0.11	-2.20	46,71,95,105	0

## 6.5 Other polymers ⓘ

There are no such residues in this entry.