



Full wwPDB X-ray Structure Validation Report

Feb 27, 2014 – 07:34 AM GMT

PDB ID : 3V3Q
Title : Crystal Structure of Human Nur77 Ligand-binding Domain in Complex with
Ethyl 2-[2,3,4 trimethoxy-6(1-octanoyl)phenyl]acetate
Authors : Zhang, Q.; Shi, C.; Yang, K.; Chen, Y.; Zhan, Y.; Wu, Q.; Lin, T.
Deposited on : 2011-12-14
Resolution : 2.22 Å(reported)

This is a full wwPDB validation report for a publicly released PDB entry.
We welcome your comments at validation@mail.wwpdb.org
A user guide is available at <http://wwpdb.org/ValidationPDFNotes.html>

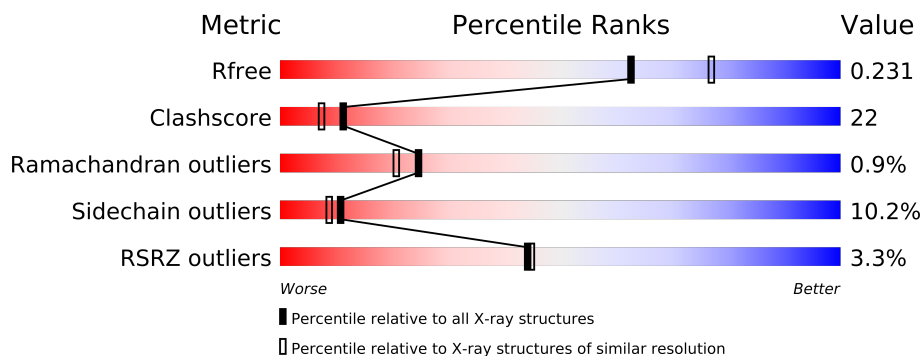
The following versions of software and data (see [references](#)) were used in the production of this report:

MolProbity : 4.02b-467
Mogul : 1.15 2013
Xtriage (Phenix) : dev-1323
EDS : stable22639
Percentile statistics : 21963
Refmac : 5.8.0049
CCP4 : 6.3.0 (Settle)
Ideal geometry (proteins) : Engh & Huber (2001)
Ideal geometry (DNA, RNA) : Parkinson et. al. (1996)
Validation Pipeline (wwPDB-VP) : stable22683

1 Overall quality at a glance

The reported resolution of this entry is 2.22 Å.

Percentile scores (ranging between 0-100) for global validation metrics of the entry are shown in the following graphic. The table shows the number of entries on which the scores are based.



Metric	Whole archive (#Entries)	Similar resolution (#Entries, resolution range(Å))
R_{free}	66092	3340 (2.24-2.20)
Clashscore	79885	4208 (2.24-2.20)
Ramachandran outliers	78287	4135 (2.24-2.20)
Sidechain outliers	78261	4136 (2.24-2.20)
RSRZ outliers	66119	3341 (2.24-2.20)

The table below summarises the geometric issues observed across the polymeric chains and their fit to the electron density. The red, orange, yellow and green segments on the lower bar indicate the fraction of residues that contain outliers for ≥ 3 , 2, 1 and 0 types of geometric quality criteria. The upper red bar (where present) indicates the fraction of residues that have poor fit to the electron density.

Mol	Chain	Length	Quality of chain
1	A	257	
1	B	257	

The following table lists non-polymeric compounds that are outliers for geometric or electron-density-fit criteria:

Mol	Type	Chain	Res	Geometry	Electron density
2	TMY	A	301	-	X
2	TMY	A	302	-	X
3	GOL	A	303	-	X
3	GOL	A	305	-	X

2 Entry composition

There are 5 unique types of molecules in this entry. The entry contains 4243 atoms, of which 0 are hydrogen and 0 are deuterium.

In the tables below, the ZeroOcc column contains the number of atoms modelled with zero occupancy, the AltConf column contains the number of residues with at least one atom in alternate conformation and the Trace column contains the number of residues modelled with at most 2 atoms.

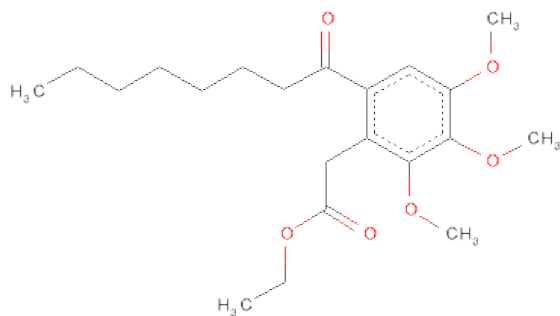
- Molecule 1 is a protein called Nuclear receptor subfamily 4 group A member 1.

Mol	Chain	Residues	Atoms					ZeroOcc	AltConf	Trace
1	A	237	Total	C	N	O	S	0	0	0
			1858	1202	315	334	7			
1	B	239	Total	C	N	O	S	0	5	0
			1909	1232	322	348	7			

There are 18 discrepancies between the modelled and reference sequences:

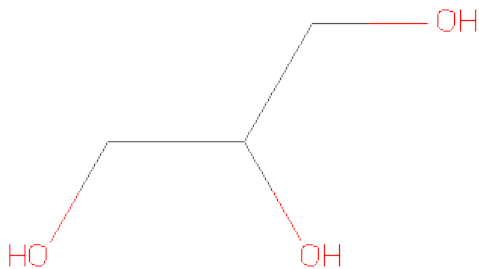
Chain	Residue	Modelled	Actual	Comment	Reference
A	19	MET	-	EXPRESSION TAG	UNP P22736
A	268	LEU	-	EXPRESSION TAG	UNP P22736
A	269	GLU	-	EXPRESSION TAG	UNP P22736
A	270	HIS	-	EXPRESSION TAG	UNP P22736
A	271	HIS	-	EXPRESSION TAG	UNP P22736
A	272	HIS	-	EXPRESSION TAG	UNP P22736
A	273	HIS	-	EXPRESSION TAG	UNP P22736
A	274	HIS	-	EXPRESSION TAG	UNP P22736
A	275	HIS	-	EXPRESSION TAG	UNP P22736
B	19	MET	-	EXPRESSION TAG	UNP P22736
B	268	LEU	-	EXPRESSION TAG	UNP P22736
B	269	GLU	-	EXPRESSION TAG	UNP P22736
B	270	HIS	-	EXPRESSION TAG	UNP P22736
B	271	HIS	-	EXPRESSION TAG	UNP P22736
B	272	HIS	-	EXPRESSION TAG	UNP P22736
B	273	HIS	-	EXPRESSION TAG	UNP P22736
B	274	HIS	-	EXPRESSION TAG	UNP P22736
B	275	HIS	-	EXPRESSION TAG	UNP P22736

- Molecule 2 is ETHYL (2,3,4-TRIMETHOXY-6-OCTANOYLPHENYL)ACETATE (three-letter code: TMY) (formula: C₂₁H₃₂O₆).



Mol	Chain	Residues	Atoms			ZeroOcc	AltConf
2	A	1	Total	C	O	0	0
			27	21	6		
2	A	1	Total	C	O	0	0
			27	21	6		

- Molecule 3 is GLYCEROL (three-letter code: GOL) (formula: $C_3H_8O_3$).



Mol	Chain	Residues	Atoms			ZeroOcc	AltConf
3	A	1	Total	C	O	0	0
			6	3	3		
3	A	1	Total	C	O	0	0
			6	3	3		

Continued on next page...

Continued from previous page...

Mol	Chain	Residues	Atoms			ZeroOcc	AltConf
3	A	1	Total	C	O	0	0
			6	3	3		
3	B	1	Total	C	O	0	0
			6	3	3		

- Molecule 4 is SODIUM ION (three-letter code: NA) (formula: Na).

Mol	Chain	Residues	Atoms		ZeroOcc	AltConf
4	B	1	Total	Na	0	0
			1	1		

- Molecule 5 is water.

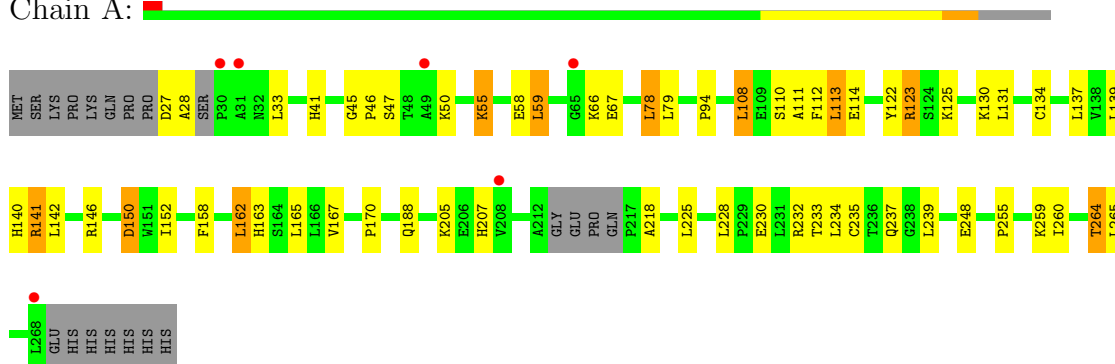
Mol	Chain	Residues	Atoms		ZeroOcc	AltConf
5	A	208	Total	O	0	0
			208	208		
5	B	189	Total	O	0	0
			189	189		

3 Residue-property plots

These plots are drawn for all protein, RNA and DNA chains in the entry. The first graphic for a chain summarises the proportions of errors displayed in the second graphic. The second graphic shows the sequence view annotated by issues in geometry and electron density. Residues are color-coded according to the number of geometric quality criteria for which they contain at least one outlier: green = 0, yellow = 1, orange = 2 and red = 3 or more. A red dot above a residue indicates a poor fit to the electron density ($RSRZ > 2$). Stretches of 2 or more consecutive residues without any outlier are shown as a green connector. Residues present in the sample, but not in the model, are shown in grey.

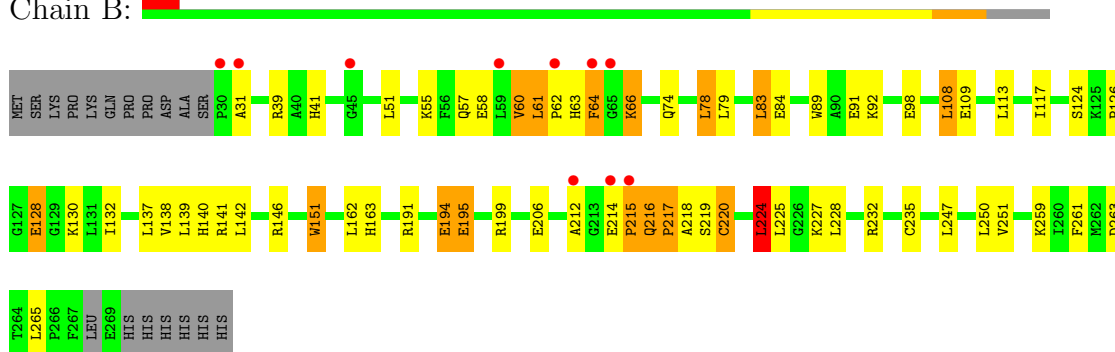
- Molecule 1: Nuclear receptor subfamily 4 group A member 1

Chain A:



- Molecule 1: Nuclear receptor subfamily 4 group A member 1

Chain B:



4 Data and refinement statistics

Property	Value	Source
Space group	P 21 21 21	Depositor
Cell constants a, b, c, α , β , γ	74.24Å 76.77Å 129.19Å 90.00° 90.00° 90.00°	Depositor
Resolution (Å)	48.73 – 2.22 49.33 – 2.22	Depositor EDS
% Data completeness (in resolution range)	93.7 (48.73-2.22) 85.2 (49.33-2.22)	Depositor EDS
R_{merge}	0.07	Depositor
R_{sym}	(Not available)	Depositor
$\langle I/\sigma(I) \rangle$ ¹	1.81 (at 2.22Å)	Xtriage
Refinement program	REFMAC 5.6.0117	Depositor
R, R_{free}	0.209 , 0.286 0.198 , 0.231	Depositor DCC
R_{free} test set	1752 reflections (5.30%)	DCC
Wilson B-factor (Å ²)	31.5	Xtriage
Anisotropy	0.062	Xtriage
Bulk solvent k_{sol} (e/Å ³), B_{sol} (Å ²)	0.35 , 41.9	EDS
Estimated twinning fraction	0.186 for k,h,-l	Xtriage
L-test for twinning	$\langle L \rangle = 0.47$, $\langle L^2 \rangle = 0.30$	Xtriage
Outliers	0 of 34891 reflections	Xtriage
F_o, F_c correlation	0.94	EDS
Total number of atoms	4243	wwPDB-VP
Average B, all atoms (Å ²)	35.0	wwPDB-VP

Xtriage's analysis on translational NCS is as follows: *The largest off-origin peak in the Patterson function is 3.87% of the height of the origin peak. No significant pseudotranslation is detected.*

¹Intensities estimated from amplitudes.

5 Model quality i

5.1 Standard geometry i

Bond lengths and bond angles in the following residue types are not validated in this section: GOL, TMY, NA

The Z score for a bond length (or angle) is the number of standard deviations the observed value is removed from the expected value. A bond length (or angle) with $|Z| > 5$ is considered an outlier worth inspection. RMSZ is the root-mean-square of all Z scores of the bond lengths (or angles).

Mol	Chain	Bond lengths		Bond angles	
		RMSZ	$\# Z > 5$	RMSZ	$\# Z > 5$
1	A	0.84	0/1897	0.97	5/2568 (0.2%)
1	B	0.80	2/1962 (0.1%)	0.94	4/2657 (0.2%)
All	All	0.82	2/3859 (0.1%)	0.95	9/5225 (0.2%)

All (2) bond length outliers are listed below:

Mol	Chain	Res	Type	Atoms	Z	Observed(Å)	Ideal(Å)
1	B	89	TRP	CD2-CE2	5.99	1.48	1.41
1	B	151	TRP	CD2-CE2	5.37	1.47	1.41

All (9) bond angle outliers are listed below:

Mol	Chain	Res	Type	Atoms	Z	Observed(°)	Ideal(°)
1	A	141	ARG	NE-CZ-NH2	-8.38	116.11	120.30
1	A	141	ARG	NE-CZ-NH1	8.18	124.39	120.30
1	B	232	ARG	NE-CZ-NH2	-7.74	116.43	120.30
1	A	59	LEU	CB-CG-CD2	6.16	121.47	111.00
1	A	108	LEU	CA-CB-CG	5.81	128.67	115.30
1	B	224	LEU	CA-CB-CG	5.73	128.47	115.30
1	B	83	LEU	CA-CB-CG	5.58	128.12	115.30
1	A	78	LEU	CB-CG-CD1	5.16	119.78	111.00
1	B	108	LEU	CB-CG-CD1	5.02	119.53	111.00

There are no chirality outliers.

There are no planarity outliers.

5.2 Close contacts ⓘ

In the following table, the Non-H and H(model) columns list the number of non-hydrogen atoms and hydrogen atoms in the chain respectively. The H(added) column lists the number of hydrogens added by MolProbity. The Clashes column lists the number of clashes within the asymmetric unit, and the number in parentheses is this value normalized per 1000 atoms of the molecule in the chain. The Symm-Clashes column gives symmetry related clashes, in the same way as for the Clashes column.

Mol	Chain	Non-H	H(model)	H(added)	Clashes	Symm-Clashes
1	A	1858	0	1906	93	0
1	B	1909	0	1950	63	0
2	A	54	0	64	72	0
3	A	18	0	24	12	0
3	B	6	0	8	4	0
4	B	1	0	0	0	0
5	A	208	0	0	18	0
5	B	189	0	0	20	0
All	All	4243	0	3952	174	0

Clashscore is defined as the number of clashes calculated for the entry per 1000 atoms (including hydrogens) of the entry. The overall clashscore for this entry is 22.

All (174) close contacts within the same asymmetric unit are listed below.

Atom-1	Atom-2	Distance(Å)	Clash(Å)
1:A:113:LEU:N	2:A:301:TMY:H32A	1.58	1.17
1:A:113:LEU:H	2:A:301:TMY:C32	1.64	1.09
1:B:191:ARG:NH2	1:B:194[B]:GLU:OE1	1.86	1.09
1:A:163:HIS:HA	2:A:302:TMY:H25A	1.34	1.08
1:A:131:LEU:HD23	5:A:604:HOH:O	1.53	1.06
1:A:113:LEU:H	2:A:301:TMY:H32A	0.92	1.04
2:A:302:TMY:H24A	5:A:438:HOH:O	1.62	1.00
3:B:301:GOL:H32	5:B:574:HOH:O	1.62	1.00
1:A:131:LEU:CD2	5:A:604:HOH:O	2.05	0.98
1:A:232:ARG:HG3	2:A:301:TMY:H17A	1.49	0.94
1:A:235:CYS:SG	2:A:301:TMY:H13	2.07	0.93
1:B:61:LEU:HB3	1:B:62:PRO:HA	1.49	0.93
1:A:123:ARG:HB3	2:A:302:TMY:O15	1.72	0.90
1:A:264:THR:OG1	2:A:301:TMY:C33	2.21	0.88
1:A:41:HIS:CE1	3:A:304:GOL:H11	2.08	0.88
1:A:114:GLU:HB2	2:A:301:TMY:C31	2.02	0.87
1:A:150:ASP:HB2	5:A:511:HOH:O	1.75	0.86
1:A:112:PHE:HB3	2:A:301:TMY:H32	1.57	0.86
1:A:114:GLU:HB2	2:A:301:TMY:H31	1.57	0.86

Continued on next page...

Continued from previous page...

Atom-1	Atom-2	Distance(Å)	Clash(Å)
2:A:301:TMY:H21A	2:A:301:TMY:H18B	1.56	0.85
1:A:167:VAL:H	2:A:302:TMY:H26B	1.40	0.85
1:B:66:LYS:H	1:B:66:LYS:HD2	1.40	0.84
1:A:264:THR:HG21	2:A:301:TMY:H5	1.58	0.84
1:A:235:CYS:CB	2:A:301:TMY:H13	2.06	0.84
1:B:55:LYS:HD3	1:B:137:LEU:HD11	1.61	0.83
1:B:206:GLU:HG2	5:B:582:HOH:O	1.79	0.82
1:A:66:LYS:HG3	1:A:146:ARG:HH12	1.46	0.81
1:B:41:HIS:NE2	3:B:301:GOL:H31	1.96	0.81
1:A:167:VAL:H	2:A:302:TMY:C26	1.94	0.80
1:A:235:CYS:SG	2:A:301:TMY:C13	2.70	0.79
2:A:301:TMY:H21A	2:A:301:TMY:C18	2.11	0.79
1:A:232:ARG:HA	2:A:301:TMY:C17	2.12	0.78
2:A:302:TMY:H17	3:A:304:GOL:C3	2.12	0.78
2:A:302:TMY:C17	2:A:302:TMY:H31B	2.14	0.78
1:B:60:VAL:HG23	1:B:61:LEU:H	1.50	0.77
1:B:224:LEU:CD2	5:B:415:HOH:O	2.32	0.77
2:A:302:TMY:H17	3:A:304:GOL:O3	1.85	0.77
1:B:141[A]:ARG:HH11	1:B:142:LEU:HD23	1.50	0.76
1:B:41:HIS:CE1	3:B:301:GOL:H31	2.21	0.75
1:A:232:ARG:HA	2:A:301:TMY:H17A	1.68	0.74
2:A:301:TMY:H13A	2:A:301:TMY:H31B	1.68	0.74
1:B:66:LYS:N	1:B:66:LYS:HD2	2.03	0.74
1:A:264:THR:OG1	2:A:301:TMY:H33B	1.86	0.73
1:A:264:THR:HG21	2:A:301:TMY:C5	2.17	0.73
1:B:191:ARG:HH22	1:B:194[B]:GLU:CD	1.91	0.73
1:A:235:CYS:HB3	2:A:301:TMY:H13	1.71	0.71
1:B:217:PRO:HG2	1:B:220:CYS:H	1.53	0.71
1:B:140:HIS:HD2	1:B:142:LEU:H	1.39	0.70
1:A:113:LEU:HB2	2:A:301:TMY:H32A	1.73	0.69
2:A:302:TMY:H17A	2:A:302:TMY:H31B	1.74	0.69
1:B:141[A]:ARG:HH11	1:B:142:LEU:CD2	2.06	0.69
1:B:31:ALA:HB3	5:B:548:HOH:O	1.91	0.69
1:B:195[A]:GLU:HG2	1:B:199:ARG:NH1	2.08	0.69
1:A:140:HIS:HD2	1:A:142:LEU:H	1.39	0.68
1:A:122:TYR:O	2:A:302:TMY:H20A	1.94	0.68
1:B:141[A]:ARG:NH1	1:B:142:LEU:HD23	2.08	0.68
1:B:60:VAL:CG2	1:B:61:LEU:N	2.57	0.68
1:B:83:LEU:HD12	5:B:413:HOH:O	1.95	0.66
1:A:27:ASP:HA	1:A:28:ALA:C	2.16	0.65
1:B:60:VAL:CG2	1:B:61:LEU:H	2.09	0.65
1:A:232:ARG:HG3	2:A:301:TMY:C17	2.27	0.65

Continued on next page...

Continued from previous page...

Atom-1	Atom-2	Distance(Å)	Clash(Å)
1:B:214:GLU:HB2	1:B:215:PRO:HD3	1.78	0.64
1:A:66:LYS:HG3	1:A:146:ARG:NH1	2.12	0.64
1:B:217:PRO:HB2	1:B:219:SER:H	1.61	0.64
1:A:131:LEU:HD22	5:A:604:HOH:O	1.84	0.63
2:A:302:TMY:H17	3:A:304:GOL:H31	1.78	0.63
1:A:239:LEU:HD21	2:A:301:TMY:C33	2.28	0.63
1:A:123:ARG:HE	3:A:304:GOL:C3	2.11	0.62
1:B:261:PHE:O	1:B:265:LEU:HD13	2.00	0.62
1:A:239:LEU:HD21	2:A:301:TMY:H33B	1.81	0.62
1:B:224:LEU:HD21	5:B:415:HOH:O	1.94	0.62
1:A:232:ARG:HA	2:A:301:TMY:H17	1.79	0.61
1:A:66:LYS:CG	1:A:146:ARG:HH12	2.12	0.61
1:A:255:PRO:HD2	5:A:515:HOH:O	1.99	0.61
1:A:113:LEU:N	2:A:301:TMY:C32	2.40	0.61
1:A:140:HIS:CD2	1:A:142:LEU:H	2.19	0.61
1:A:237:GLN:NE2	5:A:566:HOH:O	2.31	0.60
1:A:123:ARG:HE	3:A:304:GOL:H32	1.65	0.60
1:B:57:GLN:HG2	5:B:530:HOH:O	2.01	0.60
1:A:46:PRO:HD3	1:A:134:CYS:O	2.01	0.60
2:A:302:TMY:H21A	5:A:521:HOH:O	2.01	0.60
1:B:55:LYS:HD3	1:B:137:LEU:CD1	2.31	0.59
1:A:167:VAL:N	2:A:302:TMY:H26B	2.12	0.59
1:A:46:PRO:O	2:A:302:TMY:H18	2.02	0.59
1:A:260:ILE:HG22	2:A:301:TMY:H33	1.83	0.59
1:B:195[A]:GLU:HG2	1:B:199:ARG:HH11	1.66	0.59
1:A:167:VAL:HB	2:A:302:TMY:H26B	1.85	0.59
1:A:67:GLU:OE1	1:A:248:GLU:OE2	2.21	0.58
1:A:205:LYS:HE2	5:A:407:HOH:O	2.04	0.58
1:B:64:PHE:HB2	1:B:66:LYS:HA	1.86	0.58
1:A:233:THR:HG22	1:A:237:GLN:HE21	1.70	0.57
2:A:302:TMY:H17	3:A:304:GOL:HO3	1.70	0.57
1:B:195[A]:GLU:HG3	1:B:195[A]:GLU:O	2.03	0.57
1:B:259:LYS:HG2	5:B:567:HOH:O	2.04	0.56
1:A:163:HIS:CE1	2:A:302:TMY:H21	2.41	0.56
1:B:214:GLU:HB2	1:B:215:PRO:CD	2.35	0.56
1:B:91:GLU:HG2	5:B:489:HOH:O	2.04	0.56
1:A:235:CYS:HB3	2:A:301:TMY:O27	2.05	0.56
1:A:45:GLY:HA3	3:A:304:GOL:H2	1.87	0.56
1:A:162:LEU:HD22	2:A:302:TMY:H26	1.88	0.56
1:B:212:ALA:O	1:B:216:GLN:HB2	2.05	0.56
1:B:84:GLU:HB2	5:B:498:HOH:O	2.06	0.55
1:B:146:ARG:HA	5:B:499:HOH:O	2.05	0.55

Continued on next page...

Continued from previous page...

Atom-1	Atom-2	Distance(Å)	Clash(Å)
2:A:301:TMY:C13	2:A:301:TMY:H31B	2.35	0.55
1:A:113:LEU:CA	2:A:301:TMY:H32A	2.35	0.54
1:B:215:PRO:HB3	1:B:217:PRO:HG3	1.88	0.54
1:A:114:GLU:CB	2:A:301:TMY:H31	2.31	0.54
1:A:123:ARG:HB3	2:A:302:TMY:C14	2.38	0.54
2:A:302:TMY:H20	5:A:599:HOH:O	2.07	0.54
1:B:141[A]:ARG:NH1	1:B:142:LEU:CD2	2.70	0.54
1:A:113:LEU:CB	2:A:301:TMY:H32A	2.39	0.53
1:A:264:THR:OG1	2:A:301:TMY:H33	2.07	0.53
1:A:235:CYS:SG	2:A:301:TMY:H13A	2.48	0.53
1:B:58:GLU:CB	5:B:496:HOH:O	2.57	0.53
1:A:123:ARG:HD3	2:A:302:TMY:H18B	1.91	0.53
1:B:66:LYS:CD	1:B:66:LYS:H	2.18	0.53
1:B:61:LEU:HB3	1:B:62:PRO:CA	2.30	0.52
1:A:110:SER:O	2:A:301:TMY:H31A	2.10	0.52
1:A:163:HIS:HA	2:A:302:TMY:C25	2.23	0.52
1:B:61:LEU:HD23	1:B:63:HIS:H	1.75	0.52
1:B:224:LEU:HD23	5:B:415:HOH:O	2.02	0.52
1:A:55:LYS:HD3	1:A:137:LEU:HD11	1.93	0.51
1:A:41:HIS:O	3:A:304:GOL:H12	2.10	0.51
1:B:117:ILE:HD11	1:B:151:TRP:HZ2	1.76	0.51
1:B:250:LEU:N	5:B:531:HOH:O	2.43	0.51
1:A:123:ARG:NE	3:A:304:GOL:H32	2.24	0.51
1:A:232:ARG:CG	2:A:301:TMY:H17A	2.31	0.51
1:A:113:LEU:HB2	2:A:301:TMY:C32	2.41	0.50
1:A:188:GLN:HB3	5:A:574:HOH:O	2.12	0.50
1:A:260:ILE:HG22	2:A:301:TMY:C33	2.41	0.49
1:A:45:GLY:HA3	3:A:304:GOL:O3	2.12	0.49
1:A:122:TYR:CE1	2:A:302:TMY:H25	2.47	0.49
1:A:122:TYR:O	1:A:163:HIS:HE1	1.95	0.49
1:B:128:GLU:CD	1:B:128:GLU:N	2.66	0.48
2:A:301:TMY:O16	5:A:544:HOH:O	2.20	0.48
2:A:302:TMY:C6	5:A:599:HOH:O	2.61	0.48
1:B:58:GLU:HB3	5:B:496:HOH:O	2.13	0.48
1:A:218:ALA:HA	5:A:555:HOH:O	2.13	0.48
1:B:41:HIS:HE2	3:B:301:GOL:H31	1.74	0.47
1:B:132:ILE:HG12	1:B:138:VAL:HG22	1.97	0.47
1:A:264:THR:CB	2:A:301:TMY:H33B	2.45	0.47
1:A:125:LYS:NZ	5:A:521:HOH:O	2.36	0.47
1:A:170:PRO:HB2	1:A:207:HIS:CE1	2.49	0.47
1:B:217:PRO:O	1:B:218:ALA:HB3	2.14	0.47
1:B:126:PRO:HG3	1:B:163:HIS:HD2	1.79	0.47

Continued on next page...

Continued from previous page...

Atom-1	Atom-2	Distance(Å)	Clash(Å)
1:B:74:GLN:HG2	1:B:78:LEU:HD22	1.96	0.47
1:A:259:LYS:HE3	5:A:587:HOH:O	2.15	0.47
1:A:111:ALA:HA	2:A:301:TMY:C31	2.45	0.46
1:B:263:ASP:C	5:B:584:HOH:O	2.53	0.46
1:B:60:VAL:HG22	1:B:61:LEU:N	2.31	0.45
1:A:230:GLU:HG3	5:A:606:HOH:O	2.16	0.45
1:B:195[A]:GLU:CG	1:B:199:ARG:HH11	2.29	0.45
1:B:259:LYS:NZ	1:B:263:ASP:OD2	2.40	0.45
1:B:92:LYS:NZ	5:B:504:HOH:O	2.33	0.44
1:A:114:GLU:OE1	2:A:301:TMY:C31	2.64	0.44
1:A:163:HIS:ND1	2:A:302:TMY:H23	2.33	0.44
1:A:131:LEU:HG	1:A:152:ILE:HD11	1.98	0.44
1:A:58:GLU:H	1:A:58:GLU:CD	2.21	0.44
1:B:60:VAL:O	1:B:61:LEU:HB2	2.18	0.44
1:A:260:ILE:O	2:A:301:TMY:H33	2.18	0.43
1:B:124:SER:HB3	1:B:130:LYS:O	2.18	0.43
1:A:235:CYS:HB2	2:A:301:TMY:H17	2.01	0.43
2:A:302:TMY:H13	2:A:302:TMY:C20	2.49	0.43
1:A:125:LYS:HB2	1:A:130:LYS:HB2	2.02	0.42
1:A:158:PHE:HB2	1:A:234:LEU:HD11	2.02	0.42
1:A:125:LYS:HA	1:A:125:LYS:HD3	1.75	0.42
1:A:167:VAL:H	2:A:302:TMY:H26A	1.79	0.42
1:B:140:HIS:CD2	1:B:142:LEU:HG	2.54	0.42
1:A:33:LEU:N	5:A:417:HOH:O	2.53	0.42
1:A:46:PRO:HD2	3:A:304:GOL:O3	2.20	0.42
1:B:206:GLU:CG	5:B:582:HOH:O	2.50	0.41
2:A:301:TMY:C31	2:A:301:TMY:H13A	2.44	0.41
1:B:58:GLU:HB2	5:B:496:HOH:O	2.21	0.41
1:B:109:GLU:CD	5:B:567:HOH:O	2.58	0.40

There are no symmetry-related clashes.

5.3 Torsion angles

5.3.1 Protein backbone ⓘ

In the following table, the Percentiles column shows the percent Ramachandran outliers of the chain as a percentile score with respect to all X-ray entries followed by that with respect to entries of similar resolution. The Analysed column shows the number of residues for which the backbone conformation was analysed, and the total number of residues.

Mol	Chain	Analysed	Favoured	Allowed	Outliers	Percentiles	
1	A	231/257 (90%)	228 (99%)	3 (1%)	0	100	100
1	B	241/257 (94%)	227 (94%)	10 (4%)	4 (2%)	14	8
All	All	472/514 (92%)	455 (96%)	13 (3%)	4 (1%)	25	24

All (4) Ramachandran outliers are listed below:

Mol	Chain	Res	Type
1	B	215	PRO
1	B	61	LEU
1	B	216	GLN
1	B	217	PRO

5.3.2 Protein sidechains ⓘ

In the following table, the Percentiles column shows the percent sidechain outliers of the chain as a percentile score with respect to all X-ray entries followed by that with respect to entries of similar resolution. The Analysed column shows the number of residues for which the sidechain conformation was analysed, and the total number of residues.

Mol	Chain	Analysed	Rotameric	Outliers	Percentiles	
1	A	204/223 (92%)	185 (91%)	19 (9%)	13	11
1	B	211/223 (95%)	186 (88%)	25 (12%)	8	6
All	All	415/446 (93%)	371 (89%)	44 (11%)	11	8

All (44) residues with a non-rotameric sidechain are listed below:

Mol	Chain	Res	Type
1	A	47	SER
1	A	50	LYS
1	A	55	LYS
1	A	59	LEU
1	A	78	LEU
1	A	79	LEU
1	A	94	PRO
1	A	108	LEU
1	A	113	LEU
1	A	123	ARG
1	A	139	LEU
1	A	141	ARG
1	A	150	ASP

Continued on next page...

Continued from previous page...

Mol	Chain	Res	Type
1	A	162	LEU
1	A	165	LEU
1	A	225	LEU
1	A	228	LEU
1	A	264	THR
1	A	265	LEU
1	B	39	ARG
1	B	51	LEU
1	B	60	VAL
1	B	64	PHE
1	B	66	LYS
1	B	78	LEU
1	B	79	LEU
1	B	98	GLU
1	B	108	LEU
1	B	113	LEU
1	B	128	GLU
1	B	139	LEU
1	B	162	LEU
1	B	194[A]	GLU
1	B	194[B]	GLU
1	B	195[A]	GLU
1	B	195[B]	GLU
1	B	220	CYS
1	B	224	LEU
1	B	225	LEU
1	B	227	LYS
1	B	228	LEU
1	B	235	CYS
1	B	247	LEU
1	B	251	VAL

Some sidechains can be flipped to improve hydrogen bonding and reduce clashes. All (4) such sidechains are listed below:

Mol	Chain	Res	Type
1	A	140	HIS
1	A	188	GLN
1	B	140	HIS
1	B	188	GLN

5.3.3 RNA ⓘ

There are no RNA chains in this entry.

5.4 Non-standard residues in protein, DNA, RNA chains ⓘ

There are no non-standard protein/DNA/RNA residues in this entry.

5.5 Carbohydrates ⓘ

There are no carbohydrates in this entry.

5.6 Ligand geometry ⓘ

Of 7 ligands modelled in this entry, 1 is monoatomic - leaving 6 for Mogul analysis.

In the following table, the Counts columns list the number of bonds (or angles) for which Mogul statistics could be retrieved, the number of bonds (or angles) that are observed in the model and the number of bonds (or angles) that are defined in the chemical component dictionary. The Link column lists molecule types, if any, to which the group is linked. The Z score for a bond length (or angle) is the number of standard deviations the observed value is removed from the expected value. A bond length (or angle) with $|Z| > 2$ is considered an outlier worth inspection. RMSZ is the root-mean-square of all Z scores of the bond lengths (or angles).

Mol	Type	Chain	Res	Link	Bond lengths			Bond angles		
					Counts	RMSZ	# $ Z > 2$	Counts	RMSZ	# $ Z > 2$
2	TMY	A	301	-	27,27,27	2.74	5 (18%)	34,34,34	2.24	8 (23%)
2	TMY	A	302	-	27,27,27	2.87	4 (14%)	34,34,34	2.69	12 (35%)
3	GOL	A	303	-	5,5,5	0.37	0	5,5,5	0.50	0
3	GOL	A	304	-	5,5,5	0.43	0	5,5,5	1.33	1 (20%)
3	GOL	A	305	-	5,5,5	0.54	0	5,5,5	1.54	1 (20%)
3	GOL	B	301	-	5,5,5	0.43	0	5,5,5	0.86	0

In the following table, the Chirals column lists the number of chiral outliers, the number of chiral centers analysed, the number of these observed in the model and the number defined in the chemical component dictionary. Similar counts are reported in the Torsion and Rings columns. '-' means no outliers of that kind were identified.

Mol	Type	Chain	Res	Link	Chirals	Torsions	Rings
2	TMY	A	301	-	-	0/24/24/24	0/1/1/1
2	TMY	A	302	-	-	0/24/24/24	0/1/1/1
3	GOL	A	303	-	-	0/4/4/4	0/0/0/0

Continued on next page...

Continued from previous page...

Mol	Type	Chain	Res	Link	Chirals	Torsions	Rings
3	GOL	A	304	-	-	0/4/4/4	0/0/0/0
3	GOL	A	305	-	-	0/4/4/4	0/0/0/0
3	GOL	B	301	-	-	0/4/4/4	0/0/0/0

All (9) bond length outliers are listed below:

Mol	Chain	Res	Type	Atoms	Z	Observed(Å)	Ideal(Å)
2	A	302	TMY	C13-C14	-11.07	1.32	1.51
2	A	301	TMY	C13-C14	-9.57	1.35	1.51
2	A	301	TMY	C6-C1	7.88	1.48	1.40
2	A	302	TMY	C6-C1	7.29	1.48	1.40
2	A	302	TMY	O16-C14	5.15	1.49	1.33
2	A	301	TMY	O16-C14	4.31	1.46	1.33
2	A	301	TMY	O15-C14	3.87	1.34	1.22
2	A	302	TMY	O15-C14	2.69	1.30	1.22
2	A	301	TMY	C3-C2	2.11	1.43	1.39

All (22) bond angle outliers are listed below:

Mol	Chain	Res	Type	Atoms	Z	Observed(°)	Ideal(°)
2	A	302	TMY	O16-C14-C13	10.11	125.42	110.59
2	A	301	TMY	O16-C14-C13	7.59	121.72	110.59
2	A	301	TMY	C13-C1-C6	-5.29	114.64	120.56
2	A	302	TMY	C1-C13-C14	5.13	123.47	113.82
2	A	302	TMY	O30-C4-C5	-4.89	115.73	124.23
2	A	302	TMY	O30-C4-C3	4.50	123.15	115.31
2	A	301	TMY	O30-C4-C5	-4.02	117.24	124.23
2	A	301	TMY	C13-C1-C2	3.87	126.43	121.00
2	A	301	TMY	O30-C4-C3	3.61	121.59	115.31
2	A	302	TMY	O15-C14-C13	-3.48	109.69	122.16
2	A	301	TMY	C1-C13-C14	3.12	119.68	113.82
2	A	302	TMY	C32-O29-C3	2.99	123.08	114.90
2	A	302	TMY	C13-C1-C2	-2.77	117.11	121.00
3	A	305	GOL	C3-C2-C1	-2.59	99.83	111.26
2	A	302	TMY	C17-O16-C14	2.59	125.45	116.87
2	A	301	TMY	C21-C20-C19	2.23	118.06	113.52
2	A	302	TMY	C33-O30-C4	2.17	120.79	117.59
2	A	301	TMY	O29-C3-C4	-2.15	117.05	120.13
2	A	302	TMY	O29-C3-C4	2.12	123.16	120.13
3	A	304	GOL	C3-C2-C1	-2.10	101.97	111.26
2	A	302	TMY	C31-O28-C2	2.09	120.62	114.90
2	A	302	TMY	C5-C6-C1	-2.03	117.36	120.38

There are no chirality outliers.

There are no torsion outliers.

There are no ring outliers.

5.7 Other polymers ⓘ

There are no such residues in this entry.

5.8 Polymer linkage issues

There are no chain breaks in this entry.

6 Fit of model and data ⓘ

6.1 Protein, DNA and RNA chains ⓘ

In the following table, the column labelled ‘#RSRZ> 2’ contains the number (and percentage) of RSRZ outliers, followed by percent RSRZ outliers for the chain as percentile scores relative to all X-ray entries and entries of similar resolution. The OWAB column contains the minimum, median, 95th percentile and maximum values of the occupancy-weighted average B-factor per residue. The column labelled ‘Q< 0.9’ lists the number of (and percentage) of residues with an average occupancy less than 0.9.

Mol	Chain	Analysed	<RSRZ>	#RSRZ>2	OWAB(Å ²)	Q<0.9
1	A	237/257 (92%)	0.10	6 (2%) 54 55	18, 27, 60, 81	1 (0%)
1	B	239/257 (92%)	0.21	10 (4%) 35 35	20, 32, 82, 121	1 (0%)
All	All	476/514 (92%)	0.15	16 (3%) 44 43	18, 30, 72, 121	2 (0%)

All (16) RSRZ outliers are listed below:

Mol	Chain	Res	Type	RSRZ
1	A	30	PRO	4.6
1	B	214	GLU	4.1
1	B	65	GLY	3.9
1	B	212	ALA	3.6
1	B	215	PRO	3.6
1	B	64	PHE	3.0
1	B	31	ALA	3.0
1	A	49	ALA	2.9
1	B	62	PRO	2.5
1	B	59	LEU	2.5
1	A	208	VAL	2.4
1	B	45	GLY	2.4
1	A	31	ALA	2.3
1	A	268	LEU	2.3
1	A	65	GLY	2.2
1	B	30	PRO	2.1

6.2 Non-standard residues in protein, DNA, RNA chains ⓘ

There are no non-standard protein/DNA/RNA residues in this entry.

6.3 Carbohydrates ⓘ

There are no carbohydrates in this entry.

6.4 Ligands ⓘ

In the following table, the Atoms column lists the number of modelled atoms in the group and the number defined in the chemical component dictionary. LLDF column lists the quality of electron density of the group with respect to its neighbouring residues in protein, DNA or RNA chains. The B-factors column lists the minimum, median, 95th percentile and maximum values of B factors of atoms in the group. The column labelled 'Q< 0.9' lists the number of atoms with occupancy less than 0.9.

Mol	Type	Chain	Res	Atoms	RSR	LLDF	B-factors(Å ²)	Q<0.9
3	GOL	A	305	6/6	0.27	14.63	32,33,37,40	0
2	TMY	A	302	27/27	0.38	9.82	33,66,80,85	0
2	TMY	A	301	27/27	0.34	6.57	34,60,69,77	0
3	GOL	A	303	6/6	0.26	4.47	49,52,54,55	0
3	GOL	A	304	6/6	0.17	1.00	33,43,45,50	0
4	NA	B	302	1/1	0.14	0.92	15,15,15,15	0
3	GOL	B	301	6/6	0.18	0.46	29,39,39,45	0

6.5 Other polymers ⓘ

There are no such residues in this entry.