



wwPDB X-ray Structure Validation Summary Report

Feb 27, 2014 – 08:22 AM GMT

PDB ID : 3V3Z
Title : I(L177)H mutant structure of photosynthetic reaction center from Rhodospirillum rubrum
Authors : Gabdulkhakov, A.G.; Fufina, T.Y.; Vasilieva, L.G.; Shuvalov, V.A.
Deposited on : 2011-12-14
Resolution : 2.90 Å(reported)

This is a wwPDB validation summary report for a publicly released PDB entry.

We welcome your comments at validation@mail.wwpdb.org

A user guide is available at <http://wwpdb.org/ValidationPDFNotes.html>

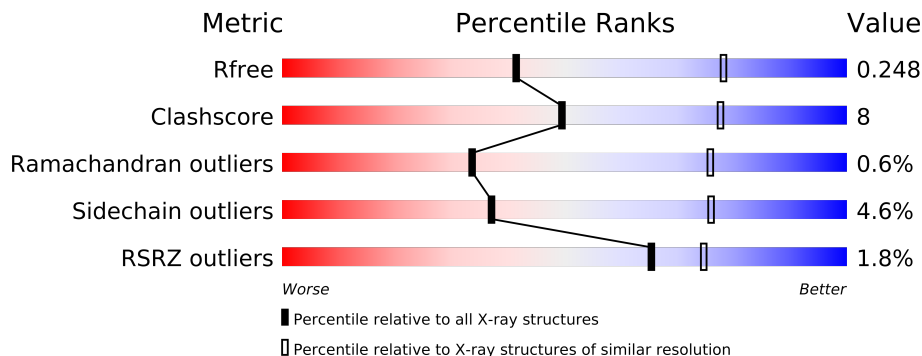
The following versions of software and data (see [references](#)) were used in the production of this report:

MolProbity	:	4.02b-467
Mogul	:	1.15 2013
Xtriage (Phenix)	:	dev-1323
EDS	:	stable22639
Percentile statistics	:	21963
Refmac	:	5.8.0049
CCP4	:	6.3.0 (Settle)
Ideal geometry (proteins)	:	Engh & Huber (2001)
Ideal geometry (DNA, RNA)	:	Parkinson et. al. (1996)
Validation Pipeline (wwPDB-VP)	:	stable22683

1 Overall quality at a glance

The reported resolution of this entry is 2.90 Å.

Percentile scores (ranging between 0-100) for global validation metrics of the entry are shown in the following graphic. The table shows the number of entries on which the scores are based.



Metric	Whole archive (#Entries)	Similar resolution (#Entries, resolution range(Å))
R_{free}	66092	1053 (2.90-2.90)
Clashscore	79885	1326 (2.90-2.90)
Ramachandran outliers	78287	1290 (2.90-2.90)
Sidechain outliers	78261	1292 (2.90-2.90)
RSRZ outliers	66119	1054 (2.90-2.90)

The table below summarises the geometric issues observed across the polymeric chains and their fit to the electron density. The red, orange, yellow and green segments on the lower bar indicate the fraction of residues that contain outliers for ≥ 3 , 2, 1 and 0 types of geometric quality criteria. The upper red bar (where present) indicates the fraction of residues that have poor fit to the electron density.

Mol	Chain	Length	Quality of chain
1	H	241	
2	L	281	
3	M	302	

The following table lists non-polymeric compounds that are outliers for geometric or electron-density-fit criteria:

Mol	Type	Chain	Res	Geometry	Electron density
11	U10	L	502	-	X
13	SPN	M	600	-	X
4	LDA	H	704	-	X
4	LDA	M	701	-	X
4	LDA	M	702	-	X

Continued on next page...

Continued from previous page...

Mol	Type	Chain	Res	Geometry	Electron density
4	LDA	M	703	-	X
4	LDA	M	705	-	X
6	HTO	H	2	-	X
6	HTO	H	3	-	X
6	HTO	L	282	-	X
7	DIO	L	283	-	X
9	BCL	L	301	-	X

2 Entry composition

There are 15 unique types of molecules in this entry. The entry contains 7216 atoms, of which 0 are hydrogen and 0 are deuterium.

In the tables below, the ZeroOcc column contains the number of atoms modelled with zero occupancy, the AltConf column contains the number of residues with at least one atom in alternate conformation and the Trace column contains the number of residues modelled with at most 2 atoms.

- Molecule 1 is a protein called Reaction center protein H chain.

Mol	Chain	Residues	Atoms					ZeroOcc	AltConf	Trace
1	H	241	Total	C	N	O	S	0	0	0
			1840	1178	315	338	9			

- Molecule 2 is a protein called Reaction center protein L chain.

Mol	Chain	Residues	Atoms					ZeroOcc	AltConf	Trace
2	L	281	Total	C	N	O	S	0	0	0
			2235	1508	357	362	8			

There are 2 discrepancies between the modelled and reference sequences:

Chain	Residue	Modelled	Actual	Comment	Reference
L	177	HIS	ILE	ENGINEERED MUTATION	UNP P0C0Y8
L	178	THR	SER	SEE REMARK 999	UNP P0C0Y8

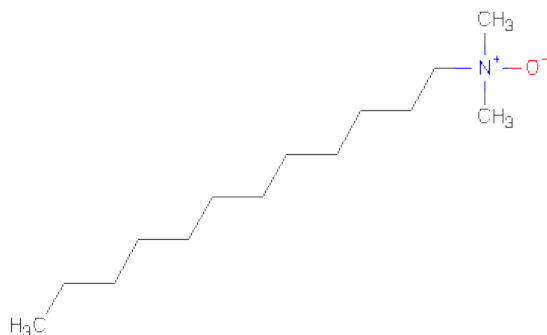
- Molecule 3 is a protein called Reaction center protein M chain.

Mol	Chain	Residues	Atoms					ZeroOcc	AltConf	Trace
3	M	302	Total	C	N	O	S	0	0	0
			2409	1608	394	397	10			

There is a discrepancy between the modelled and reference sequences:

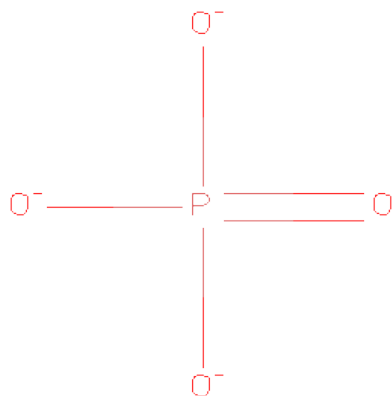
Chain	Residue	Modelled	Actual	Comment	Reference
M	8	THR	SER	SEE REMARK 999	UNP P0C0Y9

- Molecule 4 is LAURYL DIMETHYLAMINE-N-OXIDE (three-letter code: LDA) (formula: C₁₄H₃₁NO).



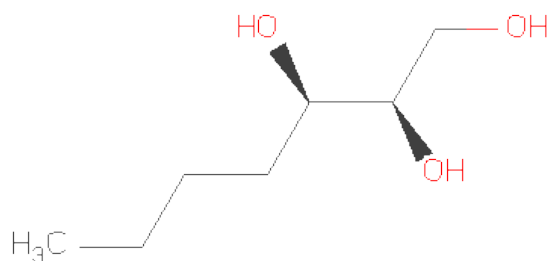
Mol	Chain	Residues	Atoms				ZeroOcc	AltConf
4	H	1	Total	C	N	O	0	0
			16	14	1	1		
4	M	1	Total	C	N	O	0	0
			16	14	1	1		
4	M	1	Total	C	N	O	0	0
			16	14	1	1		
4	M	1	Total	C	N	O	0	0
			16	14	1	1		
4	M	1	Total	C	N	O	0	0
			16	14	1	1		

- Molecule 5 is PHOSPHATE ION (three-letter code: PO4) (formula: O₄P).



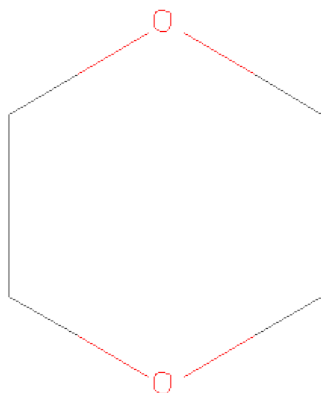
Mol	Chain	Residues	Atoms			ZeroOcc	AltConf
5	H	1	Total	O	P	0	0
			5	4	1		
5	H	1	Total	O	P	0	0
			5	4	1		
5	M	1	Total	O	P	0	0
			5	4	1		
5	M	1	Total	O	P	0	0
			5	4	1		
5	M	1	Total	O	P	0	0
			5	4	1		

- Molecule 6 is HEPTANE-1,2,3-TRIOL (three-letter code: HTO) (formula: $C_7H_{16}O_3$).



Mol	Chain	Residues	Atoms			ZeroOcc	AltConf
6	H	1	Total	C	O	0	0
			10	7	3		
6	H	1	Total	C	O	0	0
			10	7	3		
6	L	1	Total	C	O	0	0
			10	7	3		

- Molecule 7 is 1,4-DIETHYLENE DIOXIDE (three-letter code: DIO) (formula: $C_4H_8O_2$).

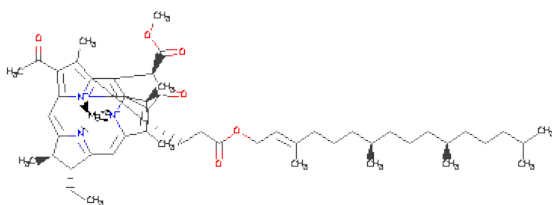


Mol	Chain	Residues	Atoms			ZeroOcc	AltConf
7	H	1	Total	C	O	0	0
			6	4	2		
7	L	1	Total	C	O	0	0
			6	4	2		

- Molecule 8 is POTASSIUM ION (three-letter code: K) (formula: K).

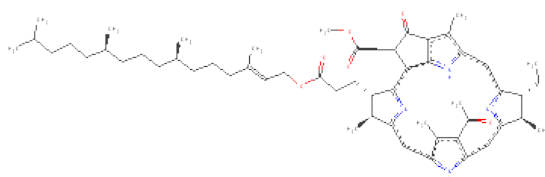
Mol	Chain	Residues	Atoms		ZeroOcc	AltConf
8	H	1	Total	K	0	0
			1	1		

- Molecule 9 is BACTERIOCHLOROPHYLL A (three-letter code: BCL) (formula: C₅₅H₇₄MgN₄O₆).



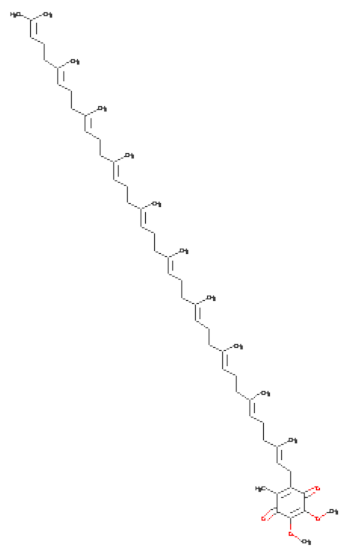
Mol	Chain	Residues	Atoms					ZeroOcc	AltConf
9	L	1	Total	C	Mg	N	O	0	0
			66	55	1	4	6		
9	L	1	Total	C	Mg	N	O	0	0
			66	55	1	4	6		
9	L	1	Total	C	Mg	N	O	0	0
			66	55	1	4	6		
9	M	1	Total	C	Mg	N	O	0	0
			66	55	1	4	6		

- Molecule 10 is BACTERIOPHEOPHYTIN A (three-letter code: BPH) (formula: C₅₅H₇₆N₄O₆).



Mol	Chain	Residues	Atoms				ZeroOcc	AltConf
10	L	1	Total	C	N	O	0	0
			65	55	4	6		
10	M	1	Total	C	N	O	0	0
			65	55	4	6		

- Molecule 11 is UBIQUINONE-10 (three-letter code: U10) (formula: C₅₉H₉₀O₄).

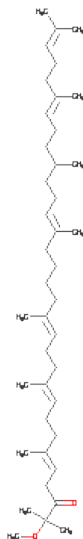


Mol	Chain	Residues	Atoms			ZeroOcc	AltConf
11	L	1	Total	C	O	0	0
			48	44	4		
11	M	1	Total	C	O	0	0
			48	44	4		

- Molecule 12 is FE (III) ION (three-letter code: FE) (formula: Fe).

Mol	Chain	Residues	Atoms		ZeroOcc	AltConf
12	M	1	Total	Fe	0	0
			1	1		

- Molecule 13 is SPEROIDENONE (three-letter code: SPN) (formula: C₄₁H₇₀O₂).



Mol	Chain	Residues	Atoms			ZeroOcc	AltConf
13	M	1	Total	C	O	0	0
			43	41	2		

- Molecule 14 is CHLORIDE ION (three-letter code: CL) (formula: Cl).

Mol	Chain	Residues	Atoms		ZeroOcc	AltConf
14	M	1	Total	Cl	0	0
			1	1		

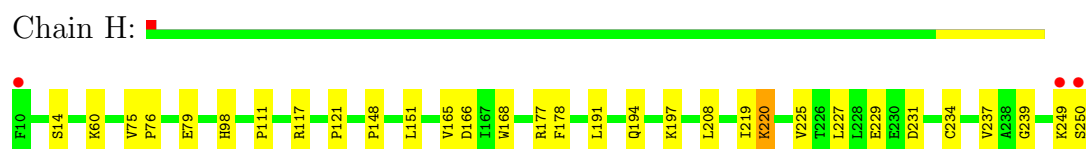
- Molecule 15 is water.

Mol	Chain	Residues	Atoms		ZeroOcc	AltConf
15	H	13	Total	O	0	0
			13	13		
15	L	19	Total	O	0	0
			19	19		
15	M	17	Total	O	0	0
			17	17		

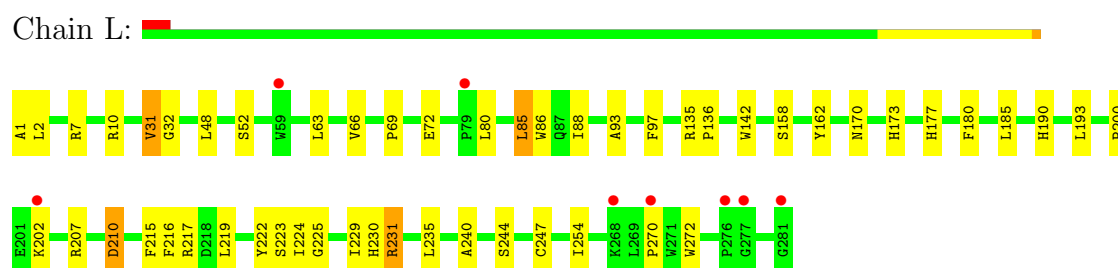
3 Residue-property plots

These plots are drawn for all protein, RNA and DNA chains in the entry. The first graphic for a chain summarises the proportions of errors displayed in the second graphic. The second graphic shows the sequence view annotated by issues in geometry and electron density. Residues are color-coded according to the number of geometric quality criteria for which they contain at least one outlier: green = 0, yellow = 1, orange = 2 and red = 3 or more. A red dot above a residue indicates a poor fit to the electron density ($RSRZ > 2$). Stretches of 2 or more consecutive residues without any outlier are shown as a green connector. Residues present in the sample, but not in the model, are shown in grey.

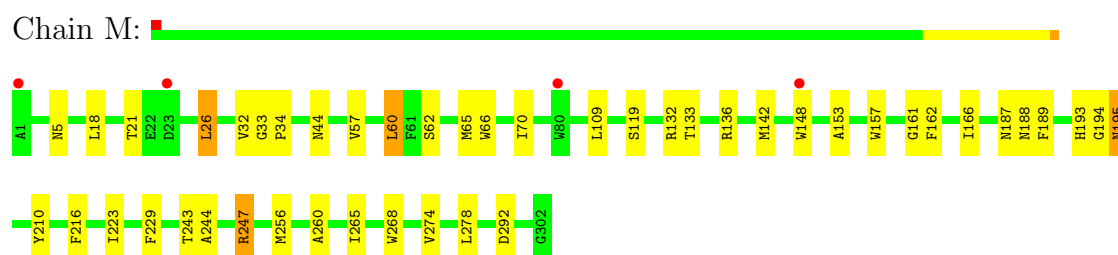
- Molecule 1: Reaction center protein H chain



- Molecule 2: Reaction center protein L chain



- Molecule 3: Reaction center protein M chain



4 Data and refinement statistics

Property	Value	Source
Space group	P 31 2 1	Depositor
Cell constants a, b, c, α , β , γ	140.13Å 140.13Å 186.03Å 90.00° 90.00° 120.00°	Depositor
Resolution (Å)	28.90 – 2.90 28.90 – 2.90	Depositor EDS
% Data completeness (in resolution range)	100.0 (28.90-2.90) 96.6 (28.90-2.90)	Depositor EDS
R_{merge}	0.09	Depositor
R_{sym}	(Not available)	Depositor
$\langle I/\sigma(I) \rangle$ ¹	2.13 (at 2.90Å)	Xtriage
Refinement program	REFMAC 5.5.0109	Depositor
R, R_{free}	0.204 , 0.251 0.204 , 0.248	Depositor DCC
R_{free} test set	2286 reflections (5.26%)	DCC
Wilson B-factor (Å ²)	69.0	Xtriage
Anisotropy	0.139	Xtriage
Bulk solvent k_{sol} (e/Å ³), B_{sol} (Å ²)	0.28 , 29.9	EDS
Estimated twinning fraction	0.042 for -h,-k,l	Xtriage
L-test for twinning	$\langle L \rangle = 0.46$, $\langle L^2 \rangle = 0.28$	Xtriage
Outliers	0 of 45707 reflections	Xtriage
F_o, F_c correlation	0.94	EDS
Total number of atoms	7216	wwPDB-VP
Average B, all atoms (Å ²)	69.0	wwPDB-VP

Xtriage's analysis on translational NCS is as follows: *The largest off-origin peak in the Patterson function is 2.63% of the height of the origin peak. No significant pseudotranslation is detected.*

¹Intensities estimated from amplitudes.

5 Model quality

5.1 Standard geometry

Bond lengths and bond angles in the following residue types are not validated in this section: BCL, LDA, DIO, CL, HTO, BPH, K, FE, SPN, U10, PO4

The Z score for a bond length (or angle) is the number of standard deviations the observed value is removed from the expected value. A bond length (or angle) with $|Z| > 5$ is considered an outlier worth inspection. RMSZ is the root-mean-square of all Z scores of the bond lengths (or angles).

Mol	Chain	Bond lengths		Bond angles	
		RMSZ	$\# Z > 5$	RMSZ	$\# Z > 5$
1	H	0.53	0/1889	0.62	0/2569
2	L	0.56	0/2324	0.59	0/3181
3	M	0.52	0/2501	0.60	1/3415 (0.0%)
All	All	0.54	0/6714	0.60	1/9165 (0.0%)

There are no bond length outliers.

All (1) bond angle outliers are listed below:

Mol	Chain	Res	Type	Atoms	Z	Observed(°)	Ideal(°)
3	M	26	LEU	CA-CB-CG	5.02	126.85	115.30

There are no chirality outliers.

There are no planarity outliers.

5.2 Close contacts

In the following table, the Non-H and H(model) columns list the number of non-hydrogen atoms and hydrogen atoms in the chain respectively. The H(added) column lists the number of hydrogens added by MolProbity. The Clashes column lists the number of clashes within the asymmetric unit, and the number in parentheses is this value normalized per 1000 atoms of the molecule in the chain. The Symm-Clashes column gives symmetry related clashes, in the same way as for the Clashes column.

Mol	Chain	Non-H	H(model)	H(added)	Clashes	Symm-Clashes
1	H	1840	0	1845	20	0
2	L	2235	0	2185	48	0
3	M	2409	0	2323	32	0
4	H	16	0	31	0	0
4	M	64	0	124	1	0

Continued on next page...

Continued from previous page...

Mol	Chain	Non-H	H(model)	H(added)	Clashes	Symm-Clashes
5	H	10	0	0	0	0
5	M	15	0	0	0	0
6	H	20	0	32	0	0
6	L	10	0	16	0	0
7	H	6	0	8	5	0
7	L	6	0	8	0	0
8	H	1	0	0	0	0
9	L	198	0	222	20	0
9	M	66	0	74	5	0
10	L	65	0	76	7	0
10	M	65	0	76	5	0
11	L	48	0	63	9	0
11	M	48	0	63	2	0
12	M	1	0	0	0	0
13	M	43	0	70	6	0
14	M	1	0	0	0	0
15	H	13	0	0	1	0
15	L	19	0	0	2	0
15	M	17	0	0	0	0
All	All	7216	0	7216	109	0

Clashscore is defined as the number of clashes calculated for the entry per 1000 atoms (including hydrogens) of the entry. The overall clashscore for this entry is 8.

The worst 5 of 109 close contacts within the same asymmetric unit are listed below.

Atom-1	Atom-2	Distance(Å)	Clash(Å)
2:L:177:HIS:CD2	9:L:302:BCL:HMB3	1.62	1.34
2:L:177:HIS:NE2	9:L:302:BCL:CMB	1.92	1.33
2:L:177:HIS:NE2	9:L:302:BCL:HMB3	1.52	1.16
2:L:177:HIS:NE2	9:L:302:BCL:HMB1	1.81	0.95
2:L:177:HIS:CD2	9:L:302:BCL:CMB	2.42	0.93

There are no symmetry-related clashes.

5.3 Torsion angles

5.3.1 Protein backbone ⓘ

In the following table, the Percentiles column shows the percent Ramachandran outliers of the chain as a percentile score with respect to all X-ray entries followed by that with respect to entries of similar resolution. The Analysed column shows the number of residues for which the backbone

conformation was analysed, and the total number of residues.

Mol	Chain	Analysed	Favoured	Allowed	Outliers	Percentiles	
1	H	239/241 (99%)	222 (93%)	17 (7%)	0	100	100
2	L	279/281 (99%)	251 (90%)	25 (9%)	3 (1%)	21	60
3	M	300/302 (99%)	277 (92%)	21 (7%)	2 (1%)	30	72
All	All	818/824 (99%)	750 (92%)	63 (8%)	5 (1%)	33	76

All (5) Ramachandran outliers are listed below:

Mol	Chain	Res	Type
2	L	80	LEU
3	M	34	PRO
3	M	195	ASN
2	L	270	PRO
2	L	31	VAL

5.3.2 Protein sidechains ⓘ

In the following table, the Percentiles column shows the percent sidechain outliers of the chain as a percentile score with respect to all X-ray entries followed by that with respect to entries of similar resolution. The Analysed column shows the number of residues for which the sidechain conformation was analysed, and the total number of residues.

Mol	Chain	Analysed	Rotameric	Outliers	Percentiles	
1	H	196/196 (100%)	190 (97%)	6 (3%)	52	88
2	L	220/220 (100%)	206 (94%)	14 (6%)	25	59
3	M	236/236 (100%)	226 (96%)	10 (4%)	40	79
All	All	652/652 (100%)	622 (95%)	30 (5%)	37	76

5 of 30 residues with a non-rotameric sidechain are listed below:

Mol	Chain	Res	Type
2	L	210	ASP
2	L	235	LEU
3	M	274	VAL
2	L	231	ARG
2	L	247	CYS

Some sidechains can be flipped to improve hydrogen bonding and reduce clashes. All (5) such sidechains are listed below:

Mol	Chain	Res	Type
1	H	98	HIS
1	H	206	ASN
2	L	183	ASN
3	M	187	ASN
3	M	193	HIS

5.3.3 RNA ⓘ

There are no RNA chains in this entry.

5.4 Non-standard residues in protein, DNA, RNA chains ⓘ

There are no non-standard protein/DNA/RNA residues in this entry.

5.5 Carbohydrates ⓘ

There are no carbohydrates in this entry.

5.6 Ligand geometry ⓘ

Of 27 ligands modelled in this entry, 3 are monoatomic - leaving 24 for Mogul analysis.

In the following table, the Counts columns list the number of bonds (or angles) for which Mogul statistics could be retrieved, the number of bonds (or angles) that are observed in the model and the number of bonds (or angles) that are defined in the chemical component dictionary. The Link column lists molecule types, if any, to which the group is linked. The Z score for a bond length (or angle) is the number of standard deviations the observed value is removed from the expected value. A bond length (or angle) with $|Z| > 2$ is considered an outlier worth inspection. RMSZ is the root-mean-square of all Z scores of the bond lengths (or angles).

Mol	Type	Chain	Res	Link	Bond lengths			Bond angles		
					Counts	RMSZ	$\# Z > 2$	Counts	RMSZ	$\# Z > 2$
6	HTO	H	2	-	9,9,9	0.33	0	10,10,10	0.55	0
7	DIO	H	251	-	6,6,6	0.45	0	6,6,6	1.01	0
6	HTO	H	3	-	9,9,9	0.49	0	10,10,10	0.61	0
4	LDA	H	704	-	15,15,15	3.80	1 (6%)	17,17,17	0.75	0
5	PO4	H	803	-	4,4,4	0.26	0	6,6,6	0.31	0
5	PO4	H	804	-	4,4,4	0.26	0	6,6,6	0.30	0
6	HTO	L	282	-	9,9,9	0.52	0	10,10,10	0.71	0
7	DIO	L	283	-	6,6,6	0.61	0	6,6,6	0.72	0
9	BCL	L	301	-	74,74,74	1.36	5 (6%)	97,115,115	1.65	17 (17%)

Mol	Type	Chain	Res	Link	Bond lengths			Bond angles		
					Counts	RMSZ	# Z > 2	Counts	RMSZ	# Z > 2
9	BCL	L	302	-	74,74,74	1.26	5 (6%)	97,115,115	1.75	21 (21%)
9	BCL	L	304	-	74,74,74	1.33	4 (5%)	97,115,115	1.77	19 (19%)
10	BPH	L	402	-	70,70,70	1.00	2 (2%)	94,101,101	1.23	8 (8%)
11	U10	L	502	-	48,48,63	3.27	15 (31%)	59,61,79	1.82	18 (30%)
9	BCL	M	303	-	74,74,74	1.33	6 (8%)	97,115,115	1.71	17 (17%)
10	BPH	M	401	-	70,70,70	1.04	4 (5%)	94,101,101	1.30	10 (10%)
11	U10	M	501	-	48,48,63	3.17	13 (27%)	59,61,79	1.70	14 (23%)
13	SPN	M	600	-	42,42,42	0.64	0	52,52,52	1.56	9 (17%)
4	LDA	M	701	-	15,15,15	3.76	1 (6%)	17,17,17	0.87	2 (11%)
4	LDA	M	702	-	15,15,15	3.59	2 (13%)	17,17,17	0.75	1 (5%)
4	LDA	M	703	-	15,15,15	3.81	1 (6%)	17,17,17	0.67	0
4	LDA	M	705	-	15,15,15	3.86	1 (6%)	17,17,17	0.62	1 (5%)
5	PO4	M	800	-	4,4,4	0.35	0	6,6,6	0.31	0
5	PO4	M	801	-	4,4,4	0.27	0	6,6,6	0.31	0
5	PO4	M	802	-	4,4,4	0.27	0	6,6,6	0.30	0

In the following table, the Chirals column lists the number of chiral outliers, the number of chiral centers analysed, the number of these observed in the model and the number defined in the chemical component dictionary. Similar counts are reported in the Torsion and Rings columns. '-' means no outliers of that kind were identified.

Mol	Type	Chain	Res	Link	Chirals	Torsions	Rings
6	HTO	H	2	-	-	0/10/10/10	0/0/0/0
7	DIO	H	251	-	-	0/0/6/6	0/1/1/1
6	HTO	H	3	-	-	0/10/10/10	0/0/0/0
4	LDA	H	704	-	-	0/13/13/13	0/0/0/0
5	PO4	H	803	-	-	0/0/0/0	0/0/0/0
5	PO4	H	804	-	-	0/0/0/0	0/0/0/0
6	HTO	L	282	-	-	0/10/10/10	0/0/0/0
7	DIO	L	283	-	-	0/0/6/6	0/1/1/1
9	BCL	L	301	-	-	0/41/137/137	0/0/9/9
9	BCL	L	302	-	-	0/41/137/137	0/0/9/9
9	BCL	L	304	-	-	0/41/137/137	0/0/9/9
10	BPH	L	402	-	-	0/49/105/105	0/0/6/6
11	U10	L	502	-	-	0/45/69/87	0/1/1/1
9	BCL	M	303	-	-	0/41/137/137	0/0/9/9
10	BPH	M	401	-	-	0/49/105/105	0/0/6/6
11	U10	M	501	-	-	0/45/69/87	0/1/1/1
13	SPN	M	600	-	-	0/51/51/51	0/0/0/0
4	LDA	M	701	-	-	0/13/13/13	0/0/0/0

Continued on next page...

Continued from previous page...

Mol	Type	Chain	Res	Link	Chirals	Torsions	Rings
4	LDA	M	702	-	-	0/13/13/13	0/0/0/0
4	LDA	M	703	-	-	0/13/13/13	0/0/0/0
4	LDA	M	705	-	-	0/13/13/13	0/0/0/0
5	PO4	M	800	-	-	0/0/0/0	0/0/0/0
5	PO4	M	801	-	-	0/0/0/0	0/0/0/0
5	PO4	M	802	-	-	0/0/0/0	0/0/0/0

The worst 5 of 60 bond length outliers are listed below:

Mol	Chain	Res	Type	Atoms	Z	Observed(Å)	Ideal(Å)
4	M	705	LDA	O1-N1	-14.73	1.25	1.39
4	M	703	LDA	O1-N1	-14.53	1.25	1.39
4	H	704	LDA	O1-N1	-14.50	1.25	1.39
4	M	701	LDA	O1-N1	-14.27	1.26	1.39
4	M	702	LDA	O1-N1	-13.67	1.26	1.39

The worst 5 of 137 bond angle outliers are listed below:

Mol	Chain	Res	Type	Atoms	Z	Observed(°)	Ideal(°)
9	L	304	BCL	C2D-C1D-ND	7.13	114.79	109.41
9	L	304	BCL	C4D-ND-C1D	-6.25	99.02	106.57
9	M	303	BCL	C2D-C1D-ND	5.83	113.81	109.41
9	L	302	BCL	C2D-C1D-ND	5.67	113.69	109.41
9	L	301	BCL	C2D-C1D-ND	5.60	113.64	109.41

There are no chirality outliers.

There are no torsion outliers.

There are no ring outliers.

5.7 Other polymers ⓘ

There are no such residues in this entry.

5.8 Polymer linkage issues

There are no chain breaks in this entry.

6 Fit of model and data ⓘ

6.1 Protein, DNA and RNA chains ⓘ

In the following table, the column labelled ‘#RSRZ> 2’ contains the number (and percentage) of RSRZ outliers, followed by percent RSRZ outliers for the chain as percentile scores relative to all X-ray entries and entries of similar resolution. The OWAB column contains the minimum, median, 95th percentile and maximum values of the occupancy-weighted average B-factor per residue. The column labelled ‘Q< 0.9’ lists the number of (and percentage) of residues with an average occupancy less than 0.9.

Mol	Chain	Analysed	<RSRZ>	#RSRZ>2	OWAB(Å ²)	Q<0.9
1	H	241/241 (100%)	-0.41	3 (1%) 75 83	51, 65, 76, 101	0
2	L	281/281 (100%)	-0.39	8 (2%) 50 59	49, 65, 100, 106	0
3	M	302/302 (100%)	-0.41	4 (1%) 74 82	44, 67, 98, 101	0
All	All	824/824 (100%)	-0.40	15 (1%) 65 74	44, 66, 97, 106	0

The worst 5 of 15 RSRZ outliers are listed below:

Mol	Chain	Res	Type	RSRZ
1	H	10	PHE	5.0
1	H	250	SER	5.0
2	L	59	TRP	4.0
3	M	80	TRP	3.4
2	L	270	PRO	3.3

6.2 Non-standard residues in protein, DNA, RNA chains ⓘ

There are no non-standard protein/DNA/RNA residues in this entry.

6.3 Carbohydrates ⓘ

There are no carbohydrates in this entry.

6.4 Ligands ⓘ

In the following table, the Atoms column lists the number of modelled atoms in the group and the number defined in the chemical component dictionary. LLDF column lists the quality of electron density of the group with respect to its neighbouring residues in protein, DNA or RNA chains. The B-factors column lists the minimum, median, 95th percentile and maximum values of B factors

of atoms in the group. The column labelled 'Q< 0.9' lists the number of atoms with occupancy less than 0.9.

Mol	Type	Chain	Res	Atoms	RSR	LLDF	B-factors(\AA^2)	Q<0.9
11	U10	L	502	48/63	0.52	15.29	128,135,140,140	0
4	LDA	H	704	16/16	0.50	7.31	109,114,120,120	0
4	LDA	M	702	16/16	0.49	6.40	96,109,120,121	0
6	HTO	L	282	10/10	0.33	6.27	97,98,99,100	0
4	LDA	M	703	16/16	0.54	6.23	98,102,107,108	0
6	HTO	H	3	10/10	0.38	5.79	113,114,114,115	0
6	HTO	H	2	10/10	0.36	4.35	134,136,136,136	0
4	LDA	M	705	16/16	0.48	4.08	83,90,100,101	0
7	DIO	L	283	6/6	0.33	3.78	131,131,131,132	0
4	LDA	M	701	16/16	0.23	2.35	77,85,88,88	0
9	BCL	L	301	66/66	0.19	2.32	62,71,111,113	0
13	SPN	M	600	43/43	0.25	2.16	65,76,86,87	0
10	BPH	M	401	65/65	0.22	1.56	63,73,107,107	0
11	U10	M	501	48/63	0.20	1.51	53,60,89,89	0
7	DIO	H	251	6/6	0.25	1.27	84,84,85,86	0
5	PO4	H	804	5/5	0.24	0.92	123,123,123,123	0
10	BPH	L	402	65/65	0.15	0.47	48,56,66,66	0
5	PO4	M	801	5/5	0.24	0.42	140,140,140,140	0
9	BCL	L	302	66/66	0.16	0.17	45,61,64,65	0
9	BCL	M	303	66/66	0.15	-0.21	57,60,71,76	0
9	BCL	L	304	66/66	0.12	-0.69	37,42,64,66	0
5	PO4	H	803	5/5	0.17	-1.03	124,124,124,124	0
5	PO4	M	802	5/5	0.12	-1.63	110,110,111,111	0
14	CL	M	304	1/1	0.06	-1.65	83,83,83,83	0
12	FE	M	500	1/1	0.10	-1.74	55,55,55,55	0
8	K	H	1	1/1	0.06	-1.91	64,64,64,64	0
5	PO4	M	800	5/5	0.08	-2.11	67,67,68,69	0

6.5 Other polymers ⓘ

There are no such residues in this entry.