



Full wwPDB X-ray Structure Validation Report

Feb 27, 2014 – 11:28 AM GMT

PDB ID : 2VBZ
Title : FEAST OR FAMINE REGULATORY PROTEIN (RV3291C)FROM M. TUBERCULOSIS COMPLEXED WITH L-TRYPTOPHAN
Authors : Shrivastava, T.; Ramachandran, R.
Deposited on : 2007-09-18
Resolution : 2.80 Å(reported)

This is a full wwPDB validation report for a publicly released PDB entry.
We welcome your comments at validation@mail.wwpdb.org
A user guide is available at <http://wwpdb.org/ValidationPDFNotes.html>

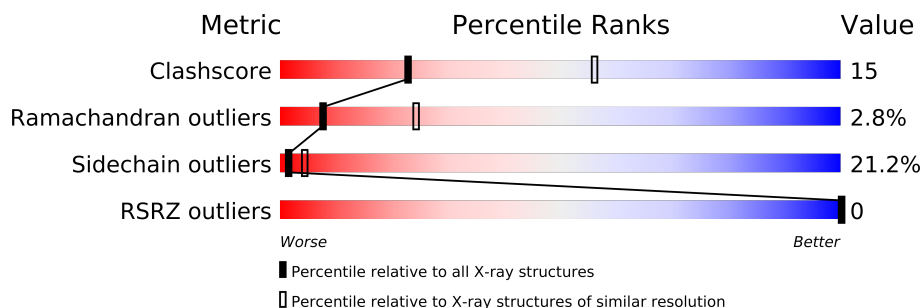
The following versions of software and data (see [references](#)) were used in the production of this report:

MolProbity : 4.02b-467
Mogul : 1.15 2013
Xtriage (Phenix) : dev-1323
EDS : stable22639
Percentile statistics : 21963
Refmac : 5.8.0049
CCP4 : 6.3.0 (Settle)
Ideal geometry (proteins) : Engh & Huber (2001)
Ideal geometry (DNA, RNA) : Parkinson et. al. (1996)
Validation Pipeline (wwPDB-VP) : stable22683

1 Overall quality at a glance

The reported resolution of this entry is 2.80 Å.

Percentile scores (ranging between 0-100) for global validation metrics of the entry are shown in the following graphic. The table shows the number of entries on which the scores are based.



Metric	Whole archive (#Entries)	Similar resolution (#Entries, resolution range(Å))
Clashscore	79885	2295 (2.80-2.80)
Ramachandran outliers	78287	2252 (2.80-2.80)
Sidechain outliers	78261	2254 (2.80-2.80)
RSRZ outliers	66119	1802 (2.80-2.80)

The table below summarises the geometric issues observed across the polymeric chains and their fit to the electron density. The red, orange, yellow and green segments on the lower bar indicate the fraction of residues that contain outliers for ≥ 3 , 2, 1 and 0 types of geometric quality criteria. The upper red bar (where present) indicates the fraction of residues that have poor fit to the electron density.

Mol	Chain	Length	Quality of chain
1	A	150	
1	B	150	

The following table lists non-polymeric compounds that are outliers for geometric or electron-density-fit criteria:

Mol	Type	Chain	Res	Geometry	Electron density
2	TRP	A	1151	-	X

2 Entry composition i

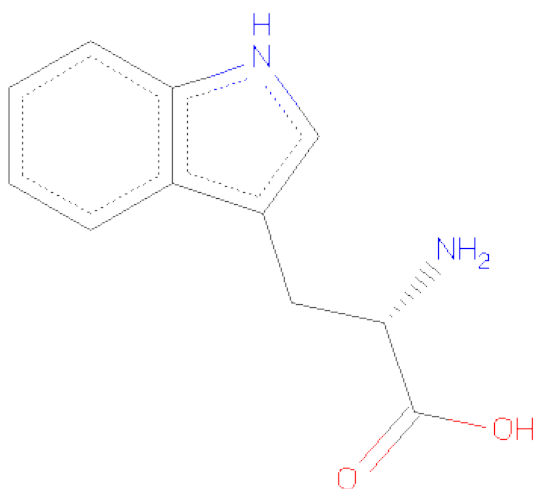
There are 3 unique types of molecules in this entry. The entry contains 2296 atoms, of which 0 are hydrogen and 0 are deuterium.

In the tables below, the ZeroOcc column contains the number of atoms modelled with zero occupancy, the AltConf column contains the number of residues with at least one atom in alternate conformation and the Trace column contains the number of residues modelled with at most 2 atoms.

- Molecule 1 is a protein called TRANSCRIPTIONAL REGULATORY PROTEIN.

Mol	Chain	Residues	Atoms					ZeroOcc	AltConf	Trace
1	A	147	Total	C	N	O	S	0	0	0
			1127	697	209	220	1			
1	B	147	Total	C	N	O	S	0	0	0
			1111	689	203	218	1			

- Molecule 2 is TRYPTOPHAN (three-letter code: TRP) (formula: $C_{11}H_{12}N_2O_2$).



Mol	Chain	Residues	Atoms				ZeroOcc	AltConf
2	A	1	Total	C	N	O	0	0
			15	11	2	2		

- Molecule 3 is water.

Mol	Chain	Residues	Atoms		ZeroOcc	AltConf
3	A	23	Total	O	0	0
			23	23		

Continued on next page...

Continued from previous page...

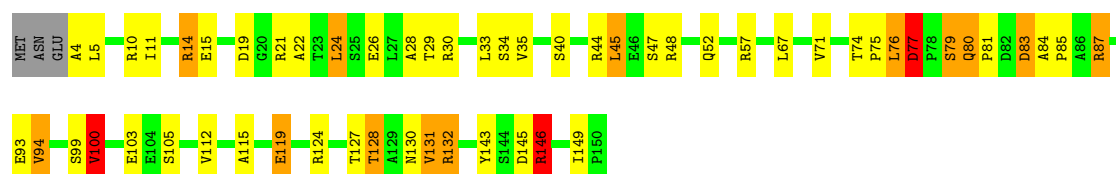
Mol	Chain	Residues	Atoms		ZeroOcc	AltConf
3	B	20	Total	O	0	0
			20	20		

3 Residue-property plots

These plots are drawn for all protein, RNA and DNA chains in the entry. The first graphic for a chain summarises the proportions of errors displayed in the second graphic. The second graphic shows the sequence view annotated by issues in geometry and electron density. Residues are color-coded according to the number of geometric quality criteria for which they contain at least one outlier: green = 0, yellow = 1, orange = 2 and red = 3 or more. A red dot above a residue indicates a poor fit to the electron density ($RSRZ > 2$). Stretches of 2 or more consecutive residues without any outlier are shown as a green connector. Residues present in the sample, but not in the model, are shown in grey.

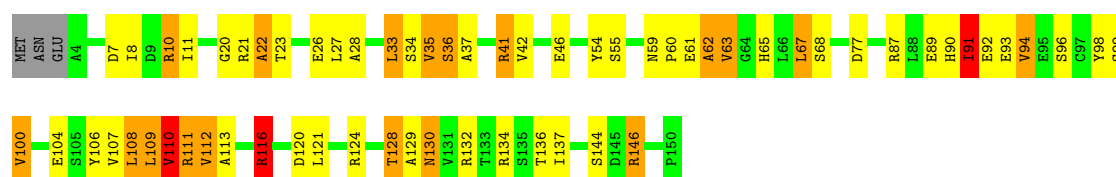
• Molecule 1: TRANSCRIPTIONAL REGULATORY PROTEIN

Chain A: 



• Molecule 1: TRANSCRIPTIONAL REGULATORY PROTEIN

Chain B: 



4 Data and refinement statistics

Property	Value	Source
Space group	P 42 21 2	Depositor
Cell constants a, b, c, α , β , γ	100.97Å 100.97Å 99.28Å 90.00° 90.00° 90.00°	Depositor
Resolution (Å)	71.43 – 2.80 35.70 – 2.80	Depositor EDS
% Data completeness (in resolution range)	96.9 (71.43-2.80) 96.9 (35.70-2.80)	Depositor EDS
R_{merge}	0.12	Depositor
R_{sym}	(Not available)	Depositor
$\langle I/\sigma(I) \rangle$ ¹	2.13 (at 2.81Å)	Xtriage
Refinement program	REFMAC 5.2.0005	Depositor
R, R_{free}	0.205 , 0.253 0.182 , (Not available)	Depositor DCC
R_{free} test set	No test flags present.	DCC
Wilson B-factor (Å ²)	49.5	Xtriage
Anisotropy	0.051	Xtriage
Bulk solvent k_{sol} (e/Å ³), B_{sol} (Å ²)	0.27 , 17.8	EDS
Estimated twinning fraction	0.027 for -h,-l,-k 0.011 for l,-k,h	Xtriage
L-test for twinning	$\langle L \rangle = 0.48$, $\langle L^2 \rangle = 0.31$	Xtriage
Outliers	0 of 12770 reflections	Xtriage
F_o, F_c correlation	0.94	EDS
Total number of atoms	2296	wwPDB-VP
Average B, all atoms (Å ²)	46.0	wwPDB-VP

Xtriage's analysis on translational NCS is as follows: *The largest off-origin peak in the Patterson function is 6.67% of the height of the origin peak. No significant pseudotranslation is detected.*

¹Intensities estimated from amplitudes.

5 Model quality

5.1 Standard geometry

The Z score for a bond length (or angle) is the number of standard deviations the observed value is removed from the expected value. A bond length (or angle) with $|Z| > 5$ is considered an outlier worth inspection. RMSZ is the root-mean-square of all Z scores of the bond lengths (or angles).

Mol	Chain	Bond lengths		Bond angles	
		RMSZ	$\# Z > 5$	RMSZ	$\# Z > 5$
1	A	1.52	9/1141 (0.8%)	1.45	7/1552 (0.5%)
1	B	1.54	9/1125 (0.8%)	1.67	29/1533 (1.9%)
All	All	1.53	18/2266 (0.8%)	1.56	36/3085 (1.2%)

Chiral center outliers are detected by calculating the chiral volume of a chiral center and verifying if the center is modelled as a planar moiety or with the opposite hand. A planarity outlier is detected by checking planarity of atoms in a peptide group, atoms in a mainchain group or atoms of a sidechain that are expected to be planar.

Mol	Chain	#Chirality outliers	#Planarity outliers
1	A	0	3

All (18) bond length outliers are listed below:

Mol	Chain	Res	Type	Atoms	Z	Observed(Å)	Ideal(Å)
1	A	77	ASP	N-CA	-10.46	1.25	1.46
1	A	93	GLU	CB-CG	-7.39	1.38	1.52
1	B	107	VAL	CB-CG2	7.10	1.67	1.52
1	A	143	TYR	CD2-CE2	6.51	1.49	1.39
1	A	131	VAL	CB-CG1	-5.92	1.40	1.52
1	A	119	GLU	CB-CG	-5.87	1.41	1.52
1	A	132	ARG	CB-CG	-5.85	1.36	1.52
1	A	115	ALA	CA-CB	-5.75	1.40	1.52
1	B	113	ALA	CA-CB	5.73	1.64	1.52
1	A	103	GLU	CG-CD	5.68	1.60	1.51
1	A	26	GLU	CG-CD	5.60	1.60	1.51
1	B	100	VAL	CB-CG1	-5.58	1.41	1.52
1	B	112	VAL	C-O	5.51	1.33	1.23
1	B	54	TYR	CE2-CZ	5.50	1.45	1.38
1	B	110	VAL	CB-CG2	-5.48	1.41	1.52
1	B	134	ARG	CG-CD	5.16	1.64	1.51
1	B	132	ARG	CB-CG	-5.14	1.38	1.52
1	B	55	SER	CA-CB	5.01	1.60	1.52

All (36) bond angle outliers are listed below:

Mol	Chain	Res	Type	Atoms	Z	Observed(°)	Ideal(°)
1	A	146	ARG	NE-CZ-NH1	15.41	128.00	120.30
1	B	109	LEU	CB-CG-CD2	-9.61	94.66	111.00
1	B	130	ASN	CB-CA-C	8.45	127.30	110.40
1	B	108	LEU	CB-CG-CD2	7.99	124.58	111.00
1	A	146	ARG	NE-CZ-NH2	-7.77	116.42	120.30
1	B	146	ARG	NE-CZ-NH1	7.65	124.12	120.30
1	B	99	SER	N-CA-CB	7.63	121.95	110.50
1	B	111	ARG	NE-CZ-NH1	7.27	123.93	120.30
1	B	116	ARG	NE-CZ-NH1	7.18	123.89	120.30
1	B	106	TYR	O-C-N	7.05	133.98	122.70
1	B	129	ALA	C-N-CA	-6.80	104.69	121.70
1	B	77	ASP	CB-CG-OD1	6.75	124.38	118.30
1	B	77	ASP	CB-CG-OD2	-6.69	112.28	118.30
1	B	91	ILE	CB-CA-C	6.38	124.36	111.60
1	B	107	VAL	CG1-CB-CG2	6.27	120.93	110.90
1	B	107	VAL	CA-CB-CG2	-6.18	101.62	110.90
1	B	106	TYR	CA-C-O	-6.17	107.14	120.10
1	B	146	ARG	NE-CZ-NH2	-6.05	117.28	120.30
1	B	108	LEU	N-CA-CB	-6.02	98.36	110.40
1	B	91	ILE	CG1-CB-CG2	-6.01	98.18	111.40
1	B	98	TYR	CB-CG-CD2	-6.00	117.40	121.00
1	B	144	SER	N-CA-CB	-5.99	101.52	110.50
1	B	99	SER	CB-CA-C	-5.85	98.99	110.10
1	B	10	ARG	NE-CZ-NH1	5.69	123.15	120.30
1	B	116	ARG	NE-CZ-NH2	-5.42	117.59	120.30
1	A	19	ASP	CB-CG-OD2	-5.39	113.45	118.30
1	B	107	VAL	CA-C-O	-5.31	108.94	120.10
1	B	109	LEU	N-CA-C	-5.28	96.75	111.00
1	A	146	ARG	CB-CA-C	5.26	120.93	110.40
1	A	83	ASP	N-CA-CB	-5.25	101.15	110.60
1	B	91	ILE	CA-CB-CG2	5.11	121.13	110.90
1	B	112	VAL	CB-CA-C	5.11	121.10	111.40
1	B	137	ILE	CA-CB-CG1	-5.10	101.31	111.00
1	A	100	VAL	CB-CA-C	5.07	121.03	111.40
1	B	134	ARG	NE-CZ-NH1	5.07	122.83	120.30
1	A	131	VAL	N-CA-CB	-5.05	100.40	111.50

There are no chirality outliers.

All (3) planarity outliers are listed below:

Mol	Chain	Res	Type	Group
1	A	130	ASN	Peptide
1	A	47	SER	Peptide
1	A	76	LEU	Peptide

5.2 Close contacts ⓘ

In the following table, the Non-H and H(model) columns list the number of non-hydrogen atoms and hydrogen atoms in the chain respectively. The H(added) column lists the number of hydrogens added by MolProbity. The Clashes column lists the number of clashes within the asymmetric unit, and the number in parentheses is this value normalized per 1000 atoms of the molecule in the chain. The Symm-Clashes column gives symmetry related clashes, in the same way as for the Clashes column.

Mol	Chain	Non-H	H(model)	H(added)	Clashes	Symm-Clashes
1	A	1127	0	1130	31	0
1	B	1111	0	1104	39	0
2	A	15	0	9	1	0
3	A	23	0	0	3	0
3	B	20	0	0	2	0
All	All	2296	0	2243	66	0

Clashscore is defined as the number of clashes calculated for the entry per 1000 atoms (including hydrogens) of the entry. The overall clashscore for this entry is 15.

All (66) close contacts within the same asymmetric unit are listed below.

Atom-1	Atom-2	Distance(Å)	Clash(Å)
1:A:124:ARG:HD3	3:A:2016:HOH:O	1.75	0.86
1:A:80:GLN:H	1:A:80:GLN:CD	1.80	0.83
1:B:42:VAL:O	1:B:46:GLU:HG3	1.83	0.78
1:A:57:ARG:CB	3:A:2004:HOH:O	2.34	0.75
1:B:8:ILE:CG2	1:B:41:ARG:HH21	2.02	0.73
1:B:8:ILE:HG22	1:B:41:ARG:HH21	1.55	0.71
1:A:83:ASP:HB3	1:A:87:ARG:HD2	1.73	0.69
1:A:80:GLN:N	1:A:80:GLN:CD	2.45	0.68
1:A:146:ARG:NH2	1:B:89:GLU:O	2.22	0.68
1:A:124:ARG:O	1:A:128:THR:HG23	1.94	0.68
1:B:124:ARG:O	1:B:128:THR:HG23	1.94	0.66
1:A:21:ARG:NH1	1:B:20:GLY:O	2.28	0.66
1:A:83:ASP:HB3	1:A:87:ARG:CD	2.27	0.65
1:A:124:ARG:O	1:A:128:THR:CG2	2.46	0.64
1:B:116:ARG:CB	1:B:116:ARG:HH11	2.11	0.64
1:B:116:ARG:HH11	1:B:116:ARG:CG	2.14	0.61

Continued on next page...

Continued from previous page...

Atom-1	Atom-2	Distance(Å)	Clash(Å)
1:B:68:SER:OG	1:B:111:ARG:HG2	2.00	0.61
1:A:15:GLU:OE1	1:A:30:ARG:NH1	2.35	0.59
1:A:77:ASP:C	1:A:77:ASP:OD1	2.43	0.57
1:A:14:ARG:HA	1:A:149:ILE:HD13	1.87	0.56
1:B:33:LEU:CD2	1:B:37:ALA:HB3	2.36	0.56
1:B:109:LEU:HD12	1:B:110:VAL:N	2.21	0.55
1:B:91:ILE:HD11	1:B:93:GLU:HG2	1.90	0.54
1:B:7:ASP:HA	1:B:10:ARG:HB3	1.89	0.54
1:B:109:LEU:HD12	1:B:110:VAL:H	1.72	0.54
1:B:59:ASN:HD22	1:B:62:ALA:HB2	1.73	0.54
1:B:33:LEU:HD23	1:B:34:SER:H	1.71	0.54
1:B:21:ARG:O	1:B:22:ALA:C	2.47	0.52
1:A:100:VAL:HG22	1:B:136:THR:HG22	1.90	0.52
1:B:116:ARG:HG2	1:B:116:ARG:HH11	1.75	0.52
1:A:24:LEU:HB3	1:A:35:VAL:HG13	1.92	0.52
1:B:37:ALA:O	1:B:41:ARG:HG2	2.09	0.51
1:A:83:ASP:O	1:A:87:ARG:HG3	2.11	0.51
1:B:124:ARG:HD3	3:B:2015:HOH:O	2.10	0.51
1:A:105:SER:HB3	2:A:1151:TRP:CE2	2.46	0.50
1:B:59:ASN:ND2	1:B:62:ALA:HB2	2.26	0.50
1:A:84:ALA:HB3	1:A:85:PRO:HD3	1.94	0.49
1:A:77:ASP:O	1:A:77:ASP:CG	2.51	0.49
1:B:116:ARG:NH1	1:B:116:ARG:HG2	2.27	0.48
1:B:96:SER:O	1:B:108:LEU:HA	2.14	0.48
1:B:41:ARG:HG2	1:B:41:ARG:H	1.34	0.47
1:B:91:ILE:HD12	1:B:91:ILE:C	2.35	0.47
1:B:33:LEU:HD22	1:B:37:ALA:HB3	1.97	0.47
1:B:116:ARG:NH1	1:B:116:ARG:CG	2.76	0.46
1:A:4:ALA:HA	3:A:2001:HOH:O	2.16	0.46
1:B:33:LEU:HD21	1:B:37:ALA:HB3	1.97	0.45
1:B:63:VAL:O	1:B:63:VAL:HG13	2.17	0.45
1:A:45:LEU:HD12	1:A:45:LEU:HA	1.59	0.43
1:B:91:ILE:CD1	1:B:93:GLU:HG2	2.48	0.43
1:B:91:ILE:HD11	1:B:121:LEU:HD11	2.01	0.42
1:A:76:LEU:HD23	1:A:76:LEU:HA	1.80	0.42
1:A:11:ILE:O	1:A:15:GLU:HG2	2.19	0.42
1:A:94:VAL:HG22	1:A:94:VAL:O	2.18	0.42
1:B:60:PRO:O	1:B:65:HIS:HB2	2.18	0.42
1:A:124:ARG:O	1:A:128:THR:HG22	2.18	0.41
1:B:34:SER:C	1:B:36:SER:H	2.22	0.41
1:A:99:SER:HA	1:A:105:SER:O	2.21	0.41
1:A:146:ARG:NH1	1:B:94:VAL:O	2.54	0.41

Continued on next page...

Continued from previous page...

Atom-1	Atom-2	Distance(Å)	Clash(Å)
1:A:14:ARG:NH2	1:A:149:ILE:O	2.53	0.41
1:A:28:ALA:HB1	1:A:33:LEU:O	2.20	0.41
1:A:83:ASP:CB	1:A:87:ARG:HD2	2.44	0.41
1:B:90:HIS:HE1	3:B:2014:HOH:O	2.04	0.41
1:B:8:ILE:HD13	1:B:8:ILE:HA	1.98	0.40
1:B:37:ALA:O	1:B:41:ARG:CG	2.70	0.40
1:A:77:ASP:OD1	1:A:79:SER:OG	2.38	0.40
1:B:67:LEU:HD23	1:B:67:LEU:HA	1.94	0.40

There are no symmetry-related clashes.

5.3 Torsion angles

5.3.1 Protein backbone ⓘ

In the following table, the Percentiles column shows the percent Ramachandran outliers of the chain as a percentile score with respect to all X-ray entries followed by that with respect to entries of similar resolution. The Analysed column shows the number of residues for which the backbone conformation was analysed, and the total number of residues.

Mol	Chain	Analysed	Favoured	Allowed	Outliers	Percentiles	
1	A	145/150 (97%)	134 (92%)	9 (6%)	2 (1%)	16	49
1	B	145/150 (97%)	123 (85%)	16 (11%)	6 (4%)	4	14
All	All	290/300 (97%)	257 (89%)	25 (9%)	8 (3%)	8	24

All (8) Ramachandran outliers are listed below:

Mol	Chain	Res	Type
1	B	28	ALA
1	A	22	ALA
1	B	22	ALA
1	B	27	LEU
1	B	62	ALA
1	B	26	GLU
1	B	35	VAL
1	A	81	PRO

5.3.2 Protein sidechains ⓘ

In the following table, the Percentiles column shows the percent sidechain outliers of the chain as a percentile score with respect to all X-ray entries followed by that with respect to entries of similar resolution. The Analysed column shows the number of residues for which the sidechain conformation was analysed, and the total number of residues.

Mol	Chain	Analysed	Rotameric	Outliers	Percentiles	
1	A	121/126 (96%)	92 (76%)	29 (24%)	1	3
1	B	118/126 (94%)	96 (81%)	22 (19%)	2	7
All	All	239/252 (95%)	188 (79%)	51 (21%)	1	4

All (51) residues with a non-rotameric sidechain are listed below:

Mol	Chain	Res	Type
1	A	5	LEU
1	A	10	ARG
1	A	14	ARG
1	A	24	LEU
1	A	29	THR
1	A	34	SER
1	A	40	SER
1	A	44	ARG
1	A	45	LEU
1	A	48	ARG
1	A	52	GLN
1	A	67	LEU
1	A	71	VAL
1	A	74	THR
1	A	75	PRO
1	A	77	ASP
1	A	79	SER
1	A	80	GLN
1	A	87	ARG
1	A	94	VAL
1	A	100	VAL
1	A	112	VAL
1	A	119	GLU
1	A	127	THR
1	A	128	THR
1	A	131	VAL
1	A	132	ARG
1	A	145	ASP
1	A	146	ARG

Continued on next page...

Continued from previous page...

Mol	Chain	Res	Type
1	B	11	ILE
1	B	23	THR
1	B	33	LEU
1	B	35	VAL
1	B	36	SER
1	B	41	ARG
1	B	61	GLU
1	B	63	VAL
1	B	67	LEU
1	B	87	ARG
1	B	91	ILE
1	B	92	GLU
1	B	94	VAL
1	B	100	VAL
1	B	104	GLU
1	B	110	VAL
1	B	112	VAL
1	B	116	ARG
1	B	120	ASP
1	B	128	THR
1	B	130	ASN
1	B	146	ARG

Some sidechains can be flipped to improve hydrogen bonding and reduce clashes. All (2) such sidechains are listed below:

Mol	Chain	Res	Type
1	A	90	HIS
1	B	147	GLN

5.3.3 RNA ⓘ

There are no RNA chains in this entry.

5.4 Non-standard residues in protein, DNA, RNA chains ⓘ

There are no non-standard protein/DNA/RNA residues in this entry.

5.5 Carbohydrates ⓘ

There are no carbohydrates in this entry.

5.6 Ligand geometry ⓘ

1 ligand is modelled in this entry.

In the following table, the Counts columns list the number of bonds (or angles) for which Mogul statistics could be retrieved, the number of bonds (or angles) that are observed in the model and the number of bonds (or angles) that are defined in the chemical component dictionary. The Link column lists molecule types, if any, to which the group is linked. The Z score for a bond length (or angle) is the number of standard deviations the observed value is removed from the expected value. A bond length (or angle) with $|Z| > 2$ is considered an outlier worth inspection. RMSZ is the root-mean-square of all Z scores of the bond lengths (or angles).

Mol	Type	Chain	Res	Link	Bond lengths			Bond angles		
					Counts	RMSZ	$\# Z > 2$	Counts	RMSZ	$\# Z > 2$
2	TRP	A	1151	-	16,16,16	1.91	3 (18%)	22,22,22	1.19	3 (13%)

In the following table, the Chirals column lists the number of chiral outliers, the number of chiral centers analysed, the number of these observed in the model and the number defined in the chemical component dictionary. Similar counts are reported in the Torsion and Rings columns. '-' means no outliers of that kind were identified.

Mol	Type	Chain	Res	Link	Chirals	Torsions	Rings
2	TRP	A	1151	-	-	0/8/8/8	0/0/2/2

All (3) bond length outliers are listed below:

Mol	Chain	Res	Type	Atoms	Z	Observed(Å)	Ideal(Å)
2	A	1151	TRP	CZ3-CE3	5.34	1.48	1.36
2	A	1151	TRP	CB-CG	-3.31	1.46	1.51
2	A	1151	TRP	CZ2-CE2	2.29	1.45	1.40

All (3) bond angle outliers are listed below:

Mol	Chain	Res	Type	Atoms	Z	Observed(°)	Ideal(°)
2	A	1151	TRP	OXT-C-O	-3.14	116.97	124.07
2	A	1151	TRP	OXT-C-CA	2.23	121.89	116.88
2	A	1151	TRP	CG-CB-CA	2.13	118.71	113.87

There are no chirality outliers.

There are no torsion outliers.

There are no ring outliers.

5.7 Other polymers ⓘ

There are no such residues in this entry.

5.8 Polymer linkage issues

There are no chain breaks in this entry.

6 Fit of model and data ⓘ

6.1 Protein, DNA and RNA chains ⓘ

In the following table, the column labelled ‘#RSRZ> 2’ contains the number (and percentage) of RSRZ outliers, followed by percent RSRZ outliers for the chain as percentile scores relative to all X-ray entries and entries of similar resolution. The OWAB column contains the minimum, median, 95th percentile and maximum values of the occupancy-weighted average B-factor per residue. The column labelled ‘Q< 0.9’ lists the number of (and percentage) of residues with an average occupancy less than 0.9.

Mol	Chain	Analysed	<RSRZ>	#RSRZ>2	OWAB(Å ²)	Q<0.9
1	A	147/150 (98%)	-0.73	0 100 100	21, 40, 68, 87	0
1	B	147/150 (98%)	-0.64	0 100 100	18, 44, 95, 98	0
All	All	294/300 (98%)	-0.68	0 100 100	18, 42, 91, 98	0

There are no RSRZ outliers to report.

6.2 Non-standard residues in protein, DNA, RNA chains ⓘ

There are no non-standard protein/DNA/RNA residues in this entry.

6.3 Carbohydrates ⓘ

There are no carbohydrates in this entry.

6.4 Ligands ⓘ

In the following table, the Atoms column lists the number of modelled atoms in the group and the number defined in the chemical component dictionary. LLDF column lists the quality of electron density of the group with respect to its neighbouring residues in protein, DNA or RNA chains. The B-factors column lists the minimum, median, 95th percentile and maximum values of B factors of atoms in the group. The column labelled ‘Q< 0.9’ lists the number of atoms with occupancy less than 0.9.

Mol	Type	Chain	Res	Atoms	RSR	LLDF	B-factors(Å ²)	Q<0.9
2	TRP	A	1151	15/15	0.25	3.93	47,60,69,72	0

6.5 Other polymers ⓘ

There are no such residues in this entry.