



Full wwPDB X-ray Structure Validation Report

Feb 26, 2014 – 02:41 PM GMT

PDB ID : 3VBG
Title : Structure of hDM2 with Dimer Inducing Indolyl Hydantoin RO-2443
Authors : Lukacs, C.M.; Janson, C.A.; Graves, B.J.
Deposited on : 2012-01-02
Resolution : 2.80 Å(reported)

This is a full wwPDB validation report for a publicly released PDB entry.
We welcome your comments at validation@mail.wwpdb.org
A user guide is available at <http://wwpdb.org/ValidationPDFNotes.html>

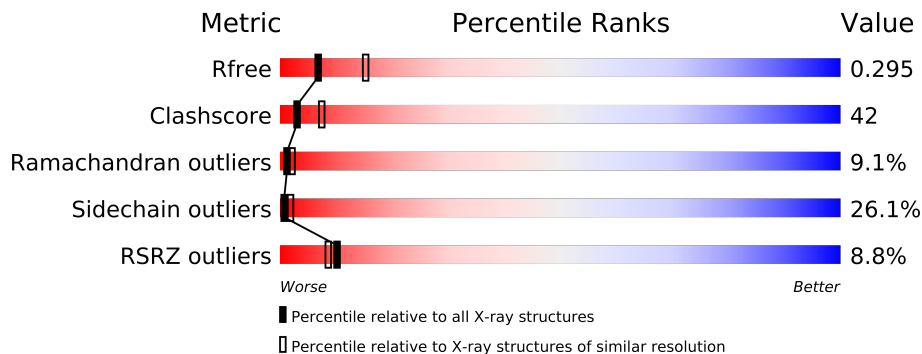
The following versions of software and data (see [references](#)) were used in the production of this report:

MolProbity : 4.02b-467
Mogul : 1.15 2013
Xtriage (Phenix) : dev-1323
EDS : stable22639
Percentile statistics : 21963
Refmac : 5.8.0049
CCP4 : 6.3.0 (Settle)
Ideal geometry (proteins) : Engh & Huber (2001)
Ideal geometry (DNA, RNA) : Parkinson et. al. (1996)
Validation Pipeline (wwPDB-VP) : stable22683

1 Overall quality at a glance

The reported resolution of this entry is 2.80 Å.

Percentile scores (ranging between 0-100) for global validation metrics of the entry are shown in the following graphic. The table shows the number of entries on which the scores are based.



Metric	Whole archive (#Entries)	Similar resolution (#Entries, resolution range(Å))
R_{free}	66092	1799 (2.80-2.80)
Clashscore	79885	2295 (2.80-2.80)
Ramachandran outliers	78287	2252 (2.80-2.80)
Sidechain outliers	78261	2254 (2.80-2.80)
RSRZ outliers	66119	1802 (2.80-2.80)

The table below summarises the geometric issues observed across the polymeric chains and their fit to the electron density. The red, orange, yellow and green segments on the lower bar indicate the fraction of residues that contain outliers for ≥ 3 , 2, 1 and 0 types of geometric quality criteria. The upper red bar (where present) indicates the fraction of residues that have poor fit to the electron density.

Mol	Chain	Length	Quality of chain
1	A	85	
1	B	85	
1	C	85	
1	D	85	

2 Entry composition

There are 3 unique types of molecules in this entry. The entry contains 2941 atoms, of which 0 are hydrogen and 0 are deuterium.

In the tables below, the ZeroOcc column contains the number of atoms modelled with zero occupancy, the AltConf column contains the number of residues with at least one atom in alternate conformation and the Trace column contains the number of residues modelled with at most 2 atoms.

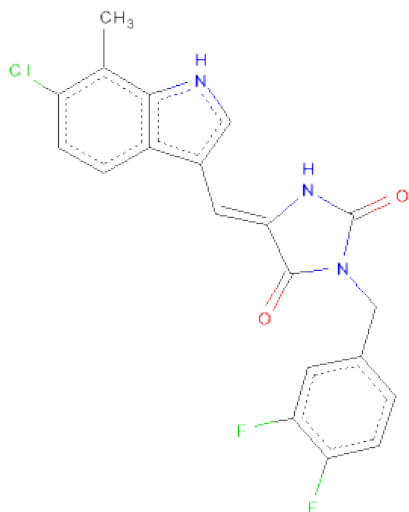
- Molecule 1 is a protein called E3 ubiquitin-protein ligase Mdm2.

Mol	Chain	Residues	Atoms					ZeroOcc	AltConf	Trace
1	A	84	Total	C	N	O	S	0	0	0
			698	456	115	123	4			
1	B	85	Total	C	N	O	S	0	0	0
			707	461	116	126	4			
1	C	84	Total	C	N	O	S	0	0	0
			698	456	115	123	4			
1	D	85	Total	C	N	O	S	0	0	0
			707	461	116	126	4			

There are 4 discrepancies between the modelled and reference sequences:

Chain	Residue	Modelled	Actual	Comment	Reference
A	33	GLU	LEU	ENGINEERED MUTATION	UNP Q00987
B	33	GLU	LEU	ENGINEERED MUTATION	UNP Q00987
C	33	GLU	LEU	ENGINEERED MUTATION	UNP Q00987
D	33	GLU	LEU	ENGINEERED MUTATION	UNP Q00987

- Molecule 2 is (5Z)-5-[(6-CHLORO-7-METHYL-1H-INDOL-3-YL)METHYLIDENE]-3-(3,4-DIFLUOROBENZYL)IMIDAZOLIDINE-2,4-DIONE (three-letter code: 03M) (formula: C₂₀H₁₄ClF₂N₃O₂).



Mol	Chain	Residues	Atoms						ZeroOcc	AltConf
2	A	1	Total	C	Cl	F	N	O	0	0
			28	20	1	2	3	2		
2	B	1	Total	C	Cl	F	N	O	0	0
			28	20	1	2	3	2		
2	C	1	Total	C	Cl	F	N	O	0	0
			28	20	1	2	3	2		
2	D	1	Total	C	Cl	F	N	O	0	0
			28	20	1	2	3	2		

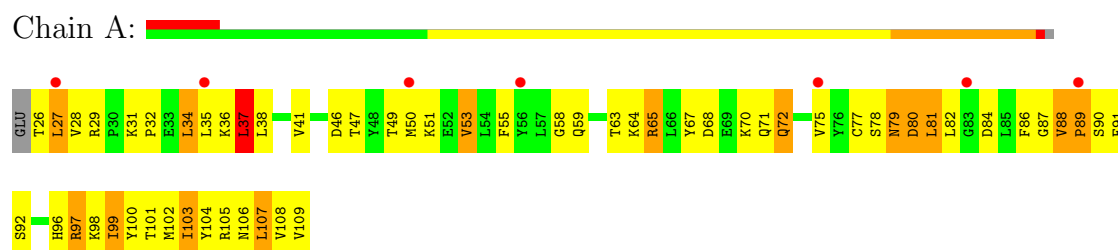
- Molecule 3 is water.

Mol	Chain	Residues	Atoms		ZeroOcc	AltConf
3	A	6	Total	O	0	0
			6	6		
3	B	5	Total	O	0	0
			5	5		
3	C	2	Total	O	0	0
			2	2		
3	D	6	Total	O	0	0
			6	6		

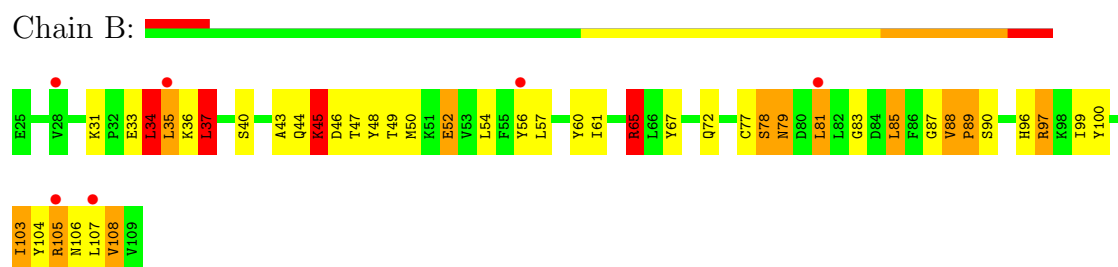
3 Residue-property plots

These plots are drawn for all protein, RNA and DNA chains in the entry. The first graphic for a chain summarises the proportions of errors displayed in the second graphic. The second graphic shows the sequence view annotated by issues in geometry and electron density. Residues are color-coded according to the number of geometric quality criteria for which they contain at least one outlier: green = 0, yellow = 1, orange = 2 and red = 3 or more. A red dot above a residue indicates a poor fit to the electron density ($RSRZ > 2$). Stretches of 2 or more consecutive residues without any outlier are shown as a green connector. Residues present in the sample, but not in the model, are shown in grey.

- Molecule 1: E3 ubiquitin-protein ligase Mdm2



- Molecule 1: E3 ubiquitin-protein ligase Mdm2



4 Data and refinement statistics

Property	Value	Source
Space group	P 32	Depositor
Cell constants a, b, c, α , β , γ	64.39Å 64.39Å 167.59Å 90.00° 90.00° 120.00°	Depositor
Resolution (Å)	30.00 – 2.80 27.89 – 2.80	Depositor EDS
% Data completeness (in resolution range)	99.3 (30.00-2.80) 99.6 (27.89-2.80)	Depositor EDS
R_{merge}	0.05	Depositor
R_{sym}	(Not available)	Depositor
$\langle I/\sigma(I) \rangle$ ¹	1.92 (at 2.80Å)	Xtriage
Refinement program	REFMAC 5.6.0117	Depositor
R, R_{free}	0.182 , 0.220 0.284 , 0.295	Depositor DCC
R_{free} test set	974 reflections (5.13%)	DCC
Wilson B-factor (Å ²)	69.9	Xtriage
Anisotropy	0.856	Xtriage
Bulk solvent k_{sol} (e/Å ³), B_{sol} (Å ²)	0.33 , 79.8	EDS
Estimated twinning fraction	0.252 for H, K, L 0.239 for -K, -H, -L 0.252 for -H, -K, L 0.257 for K, H, -L 0.479 for -h,-k,l 0.480 for h,-h-k,-l 0.487 for -k,-h,-l	Xtriage
Reported twinning fraction	0.252 for H, K, L 0.239 for -K, -H, -L 0.252 for -H, -K, L 0.257 for K, H, -L	Depositor
L-test for twinning	$\langle L \rangle = 0.53$, $\langle L^2 \rangle = 0.37$	Xtriage
Outliers	0 of 19091 reflections	Xtriage
F_o, F_c correlation	0.89	EDS
Total number of atoms	2941	wwPDB-VP
Average B, all atoms (Å ²)	106.0	wwPDB-VP

Xtriage's analysis on translational NCS is as follows: *The largest off-origin peak in the Patterson function is 4.24% of the height of the origin peak. No significant pseudotranslation is detected.*

¹Intensities estimated from amplitudes.

5 Model quality

5.1 Standard geometry

Bond lengths and bond angles in the following residue types are not validated in this section: 03M

The Z score for a bond length (or angle) is the number of standard deviations the observed value is removed from the expected value. A bond length (or angle) with $|Z| > 5$ is considered an outlier worth inspection. RMSZ is the root-mean-square of all Z scores of the bond lengths (or angles).

Mol	Chain	Bond lengths		Bond angles	
		RMSZ	# Z >5	RMSZ	# Z >5
1	A	1.03	0/712	1.25	6/957 (0.6%)
1	B	0.87	0/721	1.14	2/969 (0.2%)
1	C	1.00	0/712	1.18	3/957 (0.3%)
1	D	1.00	0/721	1.13	1/969 (0.1%)
All	All	0.98	0/2866	1.18	12/3852 (0.3%)

Chiral center outliers are detected by calculating the chiral volume of a chiral center and verifying if the center is modelled as a planar moiety or with the opposite hand. A planarity outlier is detected by checking planarity of atoms in a peptide group, atoms in a mainchain group or atoms of a sidechain that are expected to be planar.

Mol	Chain	#Chirality outliers	#Planarity outliers
1	D	0	1

There are no bond length outliers.

All (12) bond angle outliers are listed below:

Mol	Chain	Res	Type	Atoms	Z	Observed(°)	Ideal(°)
1	B	54	LEU	CA-CB-CG	7.99	133.67	115.30
1	A	27	LEU	CA-CB-CG	6.18	129.52	115.30
1	B	37	LEU	CA-CB-CG	6.14	129.42	115.30
1	C	35	LEU	CA-CB-CG	5.63	128.25	115.30
1	A	27	LEU	CB-CG-CD2	5.63	120.57	111.00
1	C	82	LEU	CA-CB-CG	5.61	128.21	115.30
1	C	105	ARG	NE-CZ-NH2	-5.47	117.56	120.30
1	A	38	LEU	CB-CG-CD2	5.42	120.22	111.00
1	D	82	LEU	CA-CB-CG	5.39	127.69	115.30
1	A	88	VAL	N-CA-C	-5.21	96.94	111.00
1	A	37	LEU	CA-CB-CG	5.13	127.10	115.30
1	A	107	LEU	CA-CB-CG	-5.06	103.66	115.30

There are no chirality outliers.

All (1) planarity outliers are listed below:

Mol	Chain	Res	Type	Group
1	D	107	LEU	Peptide

5.2 Close contacts ⓘ

In the following table, the Non-H and H(model) columns list the number of non-hydrogen atoms and hydrogen atoms in the chain respectively. The H(added) column lists the number of hydrogens added by MolProbity. The Clashes column lists the number of clashes within the asymmetric unit, and the number in parentheses is this value normalized per 1000 atoms of the molecule in the chain. The Symm-Clashes column gives symmetry related clashes, in the same way as for the Clashes column.

Mol	Chain	Non-H	H(model)	H(added)	Clashes	Symm-Clashes
1	A	698	0	0	31	1
1	B	707	0	0	27	0
1	C	698	0	0	24	0
1	D	707	0	0	40	1
2	A	28	0	0	1	0
2	B	28	0	0	0	0
2	C	28	0	0	0	0
2	D	28	0	0	0	0
3	A	6	0	0	0	0
3	B	5	0	0	0	0
3	C	2	0	0	0	0
3	D	6	0	0	2	0
All	All	2941	0	0	122	1

Clashscore is defined as the number of clashes calculated for the entry per 1000 atoms (including hydrogens) of the entry. The overall clashscore for this entry is 42.

All (122) close contacts within the same asymmetric unit are listed below.

Atom-1	Atom-2	Distance(Å)	Clash(Å)
1:D:99:ILE:O	1:D:103:ILE:CG1	2.11	0.98
1:C:37:LEU:O	1:C:40:SER:CB	2.21	0.88
1:A:86:PHE:CD2	1:A:102:MET:SD	2.69	0.86
1:B:104:TYR:O	1:B:106:ASN:N	2.12	0.82
1:D:31:LYS:N	1:D:106:ASN:O	2.14	0.80
1:D:65:ARG:NH1	1:D:67:TYR:OH	2.18	0.76
1:C:81:LEU:O	1:C:81:LEU:CD1	2.34	0.75
1:B:99:ILE:O	1:B:103:ILE:CG1	2.34	0.75

Continued on next page...

Continued from previous page...

Atom-1	Atom-2	Distance(Å)	Clash(Å)
1:B:81:LEU:CD1	1:B:85:LEU:CD2	2.64	0.74
1:A:97:ARG:CD	1:A:97:ARG:N	2.49	0.74
1:B:37:LEU:CD2	1:B:60:TYR:CD1	2.73	0.72
1:D:99:ILE:CG2	1:D:103:ILE:CD1	2.69	0.71
1:B:37:LEU:CD2	1:B:60:TYR:CE1	2.74	0.70
1:C:81:LEU:C	1:C:81:LEU:CD1	2.61	0.69
1:A:28:VAL:O	1:A:46:ASP:O	2.10	0.69
1:D:96:HIS:NE2	3:D:7:HOH:O	2.28	0.67
1:D:37:LEU:O	1:D:40:SER:OG	2.11	0.67
1:D:65:ARG:CZ	1:D:67:TYR:OH	2.43	0.67
1:B:34:LEU:O	1:B:37:LEU:N	2.28	0.67
1:A:96:HIS:O	1:A:100:TYR:CD1	2.48	0.66
1:A:34:LEU:O	1:A:37:LEU:N	2.29	0.65
1:A:82:LEU:CD1	1:A:86:PHE:CE1	2.80	0.64
1:A:68:ASP:OD1	1:A:71:GLN:N	2.30	0.64
1:C:90:SER:OG	1:C:91:PHE:N	2.31	0.63
1:A:50:MET:O	1:A:53:VAL:N	2.32	0.62
1:D:104:TYR:O	1:D:107:LEU:N	2.34	0.61
1:B:37:LEU:O	1:B:40:SER:N	2.35	0.60
1:A:64:LYS:O	1:A:65:ARG:C	2.40	0.60
1:D:97:ARG:N	1:D:97:ARG:NE	2.50	0.59
1:C:90:SER:O	1:C:91:PHE:CB	2.50	0.59
1:B:35:LEU:O	1:B:36:LYS:C	2.41	0.58
1:B:104:TYR:C	1:B:106:ASN:N	2.58	0.58
1:B:96:HIS:O	1:B:100:TYR:CD1	2.57	0.57
1:D:100:TYR:O	1:D:101:THR:C	2.42	0.57
1:A:31:LYS:O	1:A:32:PRO:C	2.41	0.57
1:D:42:GLY:O	1:D:44:GLN:NE2	2.37	0.57
1:D:90:SER:O	1:D:90:SER:OG	2.23	0.56
1:A:28:VAL:CG1	1:A:29:ARG:N	2.69	0.56
1:D:50:MET:O	1:D:52:GLU:N	2.39	0.56
1:B:97:ARG:CD	1:B:97:ARG:N	2.69	0.56
1:C:35:LEU:O	1:C:39:LYS:N	2.39	0.56
1:A:58:GLY:O	1:A:59:GLN:C	2.44	0.55
1:D:104:TYR:O	1:D:106:ASN:N	2.40	0.55
1:C:34:LEU:O	1:C:37:LEU:N	2.40	0.55
1:D:65:ARG:NH2	3:D:17:HOH:O	2.40	0.55
1:C:49:THR:OG1	1:C:52:GLU:OE1	2.24	0.55
1:B:49:THR:OG1	1:B:52:GLU:OE1	2.24	0.55
1:A:100:TYR:O	1:A:101:THR:C	2.45	0.54
1:A:26:THR:O	1:A:26:THR:CG2	2.55	0.54
1:B:78:SER:O	1:B:79:ASN:CB	2.54	0.54

Continued on next page...

Continued from previous page...

Atom-1	Atom-2	Distance(Å)	Clash(Å)
1:C:64:LYS:NZ	1:C:80:ASP:OD1	2.41	0.54
1:B:104:TYR:CD2	1:B:107:LEU:CD1	2.91	0.53
1:D:30:PRO:CD	1:D:46:ASP:O	2.57	0.53
1:C:84:ASP:O	1:C:85:LEU:C	2.47	0.53
1:D:81:LEU:C	1:D:81:LEU:CD1	2.77	0.53
1:D:92:SER:O	1:D:92:SER:OG	2.25	0.52
1:D:99:ILE:O	1:D:103:ILE:CD1	2.58	0.52
1:D:49:THR:N	1:D:52:GLU:OE1	2.42	0.52
1:B:104:TYR:O	1:B:105:ARG:C	2.47	0.52
1:D:81:LEU:CD1	1:D:81:LEU:O	2.58	0.52
1:D:50:MET:O	1:D:53:VAL:N	2.43	0.52
1:D:28:VAL:O	1:D:47:THR:CG2	2.58	0.52
1:B:45:LYS:O	1:B:48:TYR:CE1	2.62	0.51
1:D:64:LYS:O	1:D:65:ARG:CB	2.56	0.51
1:A:50:MET:O	1:A:51:LYS:C	2.48	0.51
1:D:98:LYS:O	1:D:99:ILE:C	2.48	0.51
1:C:49:THR:C	1:C:51:LYS:N	2.64	0.51
1:C:97:ARG:CG	1:C:98:LYS:N	2.74	0.51
1:C:84:ASP:O	1:C:87:GLY:N	2.44	0.51
1:B:67:TYR:N	1:B:67:TYR:CD2	2.80	0.49
1:A:77:CYS:O	1:A:80:ASP:N	2.45	0.49
1:A:99:ILE:O	1:A:103:ILE:CG1	2.60	0.49
1:C:38:LEU:C	1:C:40:SER:N	2.65	0.49
1:D:78:SER:O	1:D:79:ASN:ND2	2.47	0.48
1:D:67:TYR:CD1	1:D:67:TYR:O	2.67	0.48
1:C:83:GLY:O	1:C:87:GLY:N	2.46	0.48
1:B:65:ARG:NH1	1:B:67:TYR:OH	2.47	0.48
1:A:107:LEU:C	1:A:109:VAL:N	2.67	0.47
1:A:84:ASP:O	1:A:87:GLY:N	2.46	0.47
1:D:86:PHE:CB	1:D:102:MET:SD	3.03	0.47
1:D:50:MET:C	1:D:52:GLU:N	2.68	0.47
1:A:31:LYS:N	1:A:106:ASN:O	2.47	0.47
1:A:55:PHE:CZ	1:A:59:GLN:NE2	2.82	0.47
1:A:75:VAL:N	1:A:91:PHE:O	2.47	0.47
1:B:33:GLU:O	1:B:34:LEU:C	2.53	0.47
1:D:73:HIS:CE1	1:D:74:ILE:CG1	2.98	0.47
1:D:100:TYR:O	1:D:102:MET:N	2.48	0.46
1:A:104:TYR:C	1:A:106:ASN:N	2.68	0.46
1:A:72:GLN:OE1	2:A:1:03M:N12	2.48	0.46
1:D:50:MET:CE	1:D:100:TYR:CE1	2.98	0.46
1:D:77:CYS:O	1:D:78:SER:C	2.53	0.46
1:B:49:THR:N	1:B:52:GLU:OE1	2.49	0.45

Continued on next page...

Continued from previous page...

Atom-1	Atom-2	Distance(Å)	Clash(Å)
1:C:97:ARG:N	1:C:97:ARG:NE	2.63	0.45
1:C:104:TYR:O	1:C:106:ASN:N	2.50	0.45
1:C:34:LEU:O	1:C:35:LEU:C	2.54	0.45
1:C:75:VAL:CG1	1:C:76:TYR:N	2.80	0.45
1:A:65:ARG:NH1	1:A:67:TYR:OH	2.50	0.44
1:B:78:SER:N	1:B:89:PRO:O	2.49	0.44
1:A:78:SER:O	1:A:79:ASN:CB	2.65	0.44
1:D:67:TYR:O	1:D:68:ASP:C	2.55	0.44
1:C:30:PRO:O	1:C:31:LYS:C	2.54	0.44
1:D:59:GLN:O	1:D:63:THR:OG1	2.36	0.44
1:B:104:TYR:O	1:B:107:LEU:N	2.50	0.43
1:A:104:TYR:O	1:A:106:ASN:N	2.52	0.43
1:D:89:PRO:O	1:D:90:SER:CB	2.66	0.43
1:B:83:GLY:O	1:B:87:GLY:N	2.52	0.43
1:B:31:LYS:N	1:B:106:ASN:O	2.51	0.43
1:A:81:LEU:CD1	1:A:81:LEU:C	2.87	0.43
1:B:34:LEU:O	1:B:35:LEU:C	2.57	0.43
1:B:88:VAL:CB	1:B:89:PRO:CD	2.97	0.43
1:A:49:THR:O	1:A:50:MET:C	2.56	0.42
1:A:80:ASP:O	1:A:81:LEU:C	2.56	0.42
1:D:94:LYS:O	1:D:96:HIS:N	2.52	0.42
1:C:28:VAL:N	1:C:48:TYR:O	2.52	0.42
1:B:56:TYR:O	1:B:57:LEU:C	2.58	0.42
1:D:47:THR:O	1:D:48:TYR:CD1	2.73	0.41
1:D:71:GLN:CA	1:D:71:GLN:OE1	2.69	0.41
1:A:68:ASP:OD1	1:A:70:LYS:N	2.53	0.41
1:C:49:THR:O	1:C:51:LYS:N	2.54	0.41
1:C:35:LEU:O	1:C:39:LYS:CB	2.69	0.40
1:C:43:ALA:CB	1:C:48:TYR:OH	2.69	0.40
1:D:55:PHE:O	1:D:58:GLY:N	2.55	0.40

All (1) symmetry-related close contacts are listed below. The label for Atom-2 includes the symmetry operator and encoded unit-cell translations to be applied.

Atom-1	Atom-2	Distance(Å)	Clash(Å)
1:A:109:VAL:O	1:D:25:GLU:N[1_565]	2.17	0.03

5.3 Torsion angles

5.3.1 Protein backbone ⓘ

In the following table, the Percentiles column shows the percent Ramachandran outliers of the chain as a percentile score with respect to all X-ray entries followed by that with respect to entries of similar resolution. The Analysed column shows the number of residues for which the backbone conformation was analysed, and the total number of residues.

Mol	Chain	Analysed	Favoured	Allowed	Outliers	Percentiles	
1	A	82/85 (96%)	62 (76%)	16 (20%)	4 (5%)	3	10
1	B	83/85 (98%)	51 (61%)	23 (28%)	9 (11%)	1	1
1	C	82/85 (96%)	59 (72%)	16 (20%)	7 (8%)	1	2
1	D	83/85 (98%)	54 (65%)	19 (23%)	10 (12%)	1	1
All	All	330/340 (97%)	226 (68%)	74 (22%)	30 (9%)	1	2

All (30) Ramachandran outliers are listed below:

Mol	Chain	Res	Type
1	B	43	ALA
1	B	105	ARG
1	C	91	PHE
1	C	105	ARG
1	D	44	GLN
1	D	95	GLU
1	A	65	ARG
1	A	79	ASN
1	B	34	LEU
1	B	65	ARG
1	C	89	PRO
1	C	97	ARG
1	D	51	LYS
1	D	90	SER
1	D	97	ARG
1	A	108	VAL
1	B	45	LYS
1	C	50	MET
1	C	96	HIS
1	D	65	ARG
1	D	101	THR
1	B	79	ASN
1	D	105	ARG
1	B	61	ILE

Continued on next page...

Continued from previous page...

Mol	Chain	Res	Type
1	A	89	PRO
1	C	30	PRO
1	D	58	GLY
1	B	89	PRO
1	B	108	VAL
1	D	93	VAL

5.3.2 Protein sidechains ⓘ

In the following table, the Percentiles column shows the percent sidechain outliers of the chain as a percentile score with respect to all X-ray entries followed by that with respect to entries of similar resolution. The Analysed column shows the number of residues for which the sidechain conformation was analysed, and the total number of residues.

Mol	Chain	Analysed	Rotameric	Outliers	Percentiles	
1	A	79/80 (99%)	58 (73%)	21 (27%)	1	2
1	B	80/80 (100%)	60 (75%)	20 (25%)	1	2
1	C	79/80 (99%)	57 (72%)	22 (28%)	0	1
1	D	80/80 (100%)	60 (75%)	20 (25%)	1	2
All	All	318/320 (99%)	235 (74%)	83 (26%)	1	2

All (83) residues with a non-rotameric sidechain are listed below:

Mol	Chain	Res	Type
1	A	27	LEU
1	A	34	LEU
1	A	35	LEU
1	A	36	LYS
1	A	37	LEU
1	A	41	VAL
1	A	47	THR
1	A	53	VAL
1	A	63	THR
1	A	72	GLN
1	A	80	ASP
1	A	81	LEU
1	A	88	VAL
1	A	89	PRO
1	A	90	SER
1	A	92	SER

Continued on next page...

Continued from previous page...

Mol	Chain	Res	Type
1	A	97	ARG
1	A	98	LYS
1	A	99	ILE
1	A	103	ILE
1	A	105	ARG
1	B	34	LEU
1	B	35	LEU
1	B	37	LEU
1	B	44	GLN
1	B	45	LYS
1	B	46	ASP
1	B	47	THR
1	B	50	MET
1	B	52	GLU
1	B	65	ARG
1	B	72	GLN
1	B	77	CYS
1	B	78	SER
1	B	81	LEU
1	B	85	LEU
1	B	88	VAL
1	B	90	SER
1	B	97	ARG
1	B	103	ILE
1	B	108	VAL
1	C	27	LEU
1	C	34	LEU
1	C	35	LEU
1	C	36	LYS
1	C	37	LEU
1	C	41	VAL
1	C	44	GLN
1	C	45	LYS
1	C	47	THR
1	C	49	THR
1	C	72	GLN
1	C	77	CYS
1	C	78	SER
1	C	81	LEU
1	C	88	VAL
1	C	90	SER
1	C	97	ARG

Continued on next page...

Continued from previous page...

Mol	Chain	Res	Type
1	C	101	THR
1	C	103	ILE
1	C	107	LEU
1	C	108	VAL
1	C	109	VAL
1	D	41	VAL
1	D	44	GLN
1	D	47	THR
1	D	49	THR
1	D	63	THR
1	D	65	ARG
1	D	69	GLU
1	D	72	GLN
1	D	77	CYS
1	D	78	SER
1	D	79	ASN
1	D	81	LEU
1	D	85	LEU
1	D	92	SER
1	D	95	GLU
1	D	96	HIS
1	D	97	ARG
1	D	98	LYS
1	D	106	ASN
1	D	108	VAL

Some sidechains can be flipped to improve hydrogen bonding and reduce clashes. There are no such sidechains identified.

5.3.3 RNA ⓘ

There are no RNA chains in this entry.

5.4 Non-standard residues in protein, DNA, RNA chains ⓘ

There are no non-standard protein/DNA/RNA residues in this entry.

5.5 Carbohydrates ⓘ

There are no carbohydrates in this entry.

5.6 Ligand geometry

4 ligands are modelled in this entry.

In the following table, the Counts columns list the number of bonds (or angles) for which Mogul statistics could be retrieved, the number of bonds (or angles) that are observed in the model and the number of bonds (or angles) that are defined in the chemical component dictionary. The Link column lists molecule types, if any, to which the group is linked. The Z score for a bond length (or angle) is the number of standard deviations the observed value is removed from the expected value. A bond length (or angle) with $|Z| > 2$ is considered an outlier worth inspection. RMSZ is the root-mean-square of all Z scores of the bond lengths (or angles).

Mol	Type	Chain	Res	Link	Bond lengths			Bond angles		
					Counts	RMSZ	# $ Z > 2$	Counts	RMSZ	# $ Z > 2$
2	03M	A	1	-	31,31,31	2.16	9 (29%)	45,46,46	4.06	22 (48%)
2	03M	B	1	-	31,31,31	1.87	7 (22%)	45,46,46	4.79	24 (53%)
2	03M	C	1	-	31,31,31	1.91	8 (25%)	45,46,46	4.23	19 (42%)
2	03M	D	1	-	31,31,31	2.10	9 (29%)	45,46,46	4.37	20 (44%)

In the following table, the Chirals column lists the number of chiral outliers, the number of chiral centers analysed, the number of these observed in the model and the number defined in the chemical component dictionary. Similar counts are reported in the Torsion and Rings columns. '-' means no outliers of that kind were identified.

Mol	Type	Chain	Res	Link	Chirals	Torsions	Rings
2	03M	A	1	-	-	0/6/24/24	0/2/4/4
2	03M	B	1	-	-	0/6/24/24	0/2/4/4
2	03M	C	1	-	-	0/6/24/24	0/2/4/4
2	03M	D	1	-	-	0/6/24/24	0/2/4/4

All (33) bond length outliers are listed below:

Mol	Chain	Res	Type	Atoms	Z	Observed(Å)	Ideal(Å)
2	C	1	03M	C10-C11	6.39	1.49	1.34
2	A	1	03M	C10-C11	5.61	1.47	1.34
2	B	1	03M	C10-C11	5.61	1.47	1.34
2	D	1	03M	C10-C11	5.48	1.47	1.34
2	A	1	03M	C11-C15	-5.47	1.42	1.49
2	D	1	03M	C11-C15	-5.17	1.43	1.49
2	C	1	03M	C3-C9	-3.81	1.38	1.43
2	A	1	03M	C13-N14	-3.77	1.30	1.39
2	A	1	03M	O16-C13	3.45	1.29	1.23
2	D	1	03M	C15-N14	-3.36	1.32	1.39
2	C	1	03M	C15-N14	-3.33	1.32	1.39

Continued on next page...

Continued from previous page...

Mol	Chain	Res	Type	Atoms	Z	Observed(Å)	Ideal(Å)
2	B	1	03M	C15-N14	-3.27	1.32	1.39
2	C	1	03M	C11-C15	-3.21	1.45	1.49
2	A	1	03M	C2-CL	3.15	1.81	1.73
2	A	1	03M	C15-N14	-3.15	1.33	1.39
2	B	1	03M	O17-C15	3.08	1.30	1.23
2	B	1	03M	C7-C10	3.05	1.53	1.47
2	D	1	03M	C13-N14	-2.95	1.32	1.39
2	D	1	03M	O16-C13	2.94	1.28	1.23
2	B	1	03M	C21-C22	2.70	1.44	1.38
2	A	1	03M	O17-C15	2.62	1.28	1.23
2	D	1	03M	C2-CL	2.60	1.80	1.73
2	D	1	03M	C4-C8	-2.57	1.36	1.42
2	B	1	03M	C3-C9	-2.52	1.39	1.43
2	C	1	03M	O16-C13	2.51	1.28	1.23
2	A	1	03M	C4-C8	-2.47	1.37	1.42
2	B	1	03M	O16-C13	2.46	1.28	1.23
2	D	1	03M	O17-C15	2.26	1.28	1.23
2	D	1	03M	C18-C19	-2.26	1.47	1.51
2	C	1	03M	O17-C15	2.22	1.28	1.23
2	C	1	03M	C21-C22	2.09	1.42	1.38
2	A	1	03M	C6-N5	2.06	1.41	1.37
2	C	1	03M	C13-N14	-2.03	1.34	1.39

All (85) bond angle outliers are listed below:

Mol	Chain	Res	Type	Atoms	Z	Observed(°)	Ideal(°)
2	B	1	03M	C15-N14-C13	-17.34	102.47	111.28
2	C	1	03M	C15-N14-C13	-17.25	102.51	111.28
2	D	1	03M	C15-N14-C13	-16.77	102.76	111.28
2	A	1	03M	C11-N12-C13	-14.50	100.47	111.47
2	D	1	03M	C11-N12-C13	-13.62	101.14	111.47
2	C	1	03M	C11-N12-C13	-12.79	101.77	111.47
2	B	1	03M	C11-N12-C13	-12.77	101.78	111.47
2	A	1	03M	C15-N14-C13	-11.05	105.66	111.28
2	B	1	03M	C11-C15-N14	10.46	110.56	105.49
2	C	1	03M	C11-C15-N14	9.39	110.05	105.49
2	D	1	03M	C11-C15-N14	8.84	109.78	105.49
2	D	1	03M	C7-C6-N5	-8.26	103.57	110.99
2	A	1	03M	C7-C6-N5	-8.25	103.58	110.99
2	B	1	03M	C27-C3-C9	8.11	127.36	119.24
2	C	1	03M	N12-C13-N14	7.78	118.14	107.24
2	B	1	03M	N12-C13-N14	7.76	118.11	107.24

Continued on next page...

Continued from previous page...

Mol	Chain	Res	Type	Atoms	Z	Observed(°)	Ideal(°)
2	B	1	03M	C18-N14-C13	7.51	131.37	123.77
2	D	1	03M	N12-C13-N14	7.43	117.65	107.24
2	B	1	03M	C3-C2-CL	-7.30	113.47	119.73
2	A	1	03M	N12-C13-N14	6.94	116.96	107.24
2	A	1	03M	O16-C13-N14	-6.60	114.30	125.69
2	B	1	03M	C7-C6-N5	-6.04	105.56	110.99
2	C	1	03M	C7-C6-N5	-5.54	106.02	110.99
2	A	1	03M	C11-C15-N14	4.95	107.89	105.49
2	A	1	03M	C15-C11-N12	4.68	109.00	105.15
2	D	1	03M	O16-C13-N14	-4.47	117.97	125.69
2	D	1	03M	O17-C15-C11	-4.45	122.34	128.39
2	C	1	03M	C18-N14-C13	4.43	128.25	123.77
2	B	1	03M	C10-C11-C15	4.31	129.30	122.12
2	A	1	03M	C3-C2-CL	4.31	123.43	119.73
2	B	1	03M	C4-C8-C9	4.10	124.86	117.08
2	A	1	03M	C20-C19-C24	4.08	124.69	118.53
2	D	1	03M	C15-C11-N12	4.05	108.48	105.15
2	A	1	03M	C18-C19-C24	-3.94	112.17	120.20
2	D	1	03M	C27-C3-C9	3.78	123.02	119.24
2	C	1	03M	C4-C8-C9	3.75	124.20	117.08
2	A	1	03M	C27-C3-C9	3.73	122.97	119.24
2	B	1	03M	O16-C13-N12	-3.59	120.42	126.91
2	D	1	03M	C18-N14-C15	3.56	131.31	122.85
2	A	1	03M	C7-C10-C11	-3.48	120.86	129.34
2	D	1	03M	C6-C7-C8	3.45	112.29	107.16
2	A	1	03M	C4-C8-C9	3.42	123.57	117.08
2	C	1	03M	C1-C4-C8	-3.40	116.09	121.15
2	B	1	03M	C27-C3-C2	-3.37	117.40	121.67
2	C	1	03M	O16-C13-N14	-3.34	119.92	125.69
2	A	1	03M	C1-C4-C8	-3.32	116.22	121.15
2	A	1	03M	C21-C20-C19	-3.31	116.17	121.05
2	A	1	03M	C4-C1-C2	3.28	122.85	119.67
2	B	1	03M	C20-C19-C24	3.28	123.48	118.53
2	A	1	03M	C6-C7-C8	3.20	111.93	107.16
2	C	1	03M	C27-C3-C9	3.20	122.44	119.24
2	D	1	03M	C4-C8-C9	3.17	123.10	117.08
2	B	1	03M	C19-C24-C23	-3.15	117.50	119.46
2	D	1	03M	C20-C19-C24	3.14	123.28	118.53
2	B	1	03M	C2-C3-C9	-3.07	115.22	118.88
2	C	1	03M	C10-C11-C15	3.07	127.22	122.12
2	B	1	03M	C7-C8-C9	-3.06	105.78	107.82
2	B	1	03M	C1-C2-C3	3.05	127.40	122.69

Continued on next page...

Continued from previous page...

Mol	Chain	Res	Type	Atoms	Z	Observed(°)	Ideal(°)
2	A	1	03M	C19-C24-C23	-2.99	117.60	119.46
2	A	1	03M	C18-N14-C15	2.92	129.77	122.85
2	B	1	03M	C1-C4-C8	-2.87	116.88	121.15
2	B	1	03M	C4-C1-C2	-2.87	116.89	119.67
2	C	1	03M	C15-C11-N12	2.81	107.46	105.15
2	D	1	03M	C7-C8-C9	-2.80	105.95	107.82
2	C	1	03M	O16-C13-N12	-2.75	121.93	126.91
2	D	1	03M	C10-C11-C15	2.73	126.66	122.12
2	C	1	03M	C7-C8-C9	-2.72	106.00	107.82
2	A	1	03M	O17-C15-C11	-2.69	124.73	128.39
2	C	1	03M	C18-C19-C24	-2.68	114.75	120.20
2	C	1	03M	C18-N14-C15	2.66	129.15	122.85
2	C	1	03M	O17-C15-C11	-2.62	124.83	128.39
2	C	1	03M	C2-C3-C9	-2.61	115.77	118.88
2	D	1	03M	C27-C3-C2	-2.55	118.44	121.67
2	A	1	03M	C8-C7-C10	-2.55	119.88	127.60
2	A	1	03M	C27-C3-C2	-2.49	118.51	121.67
2	B	1	03M	O16-C13-N14	-2.49	121.40	125.69
2	B	1	03M	C20-C21-C22	-2.48	116.17	118.95
2	D	1	03M	C8-C7-C10	-2.44	120.23	127.60
2	B	1	03M	C7-C10-C11	-2.38	123.52	129.34
2	C	1	03M	C20-C19-C24	2.35	122.09	118.53
2	B	1	03M	C15-C11-N12	2.25	107.00	105.15
2	D	1	03M	C21-C20-C19	-2.21	117.79	121.05
2	D	1	03M	C1-C4-C8	-2.14	117.96	121.15
2	D	1	03M	C18-N14-C13	2.07	125.86	123.77
2	B	1	03M	C6-C7-C8	2.01	110.15	107.16

There are no chirality outliers.

There are no torsion outliers.

There are no ring outliers.

5.7 Other polymers ⓘ

There are no such residues in this entry.

5.8 Polymer linkage issues

There are no chain breaks in this entry.

6 Fit of model and data ⓘ

6.1 Protein, DNA and RNA chains ⓘ

In the following table, the column labelled ‘#RSRZ> 2’ contains the number (and percentage) of RSRZ outliers, followed by percent RSRZ outliers for the chain as percentile scores relative to all X-ray entries and entries of similar resolution. The OWAB column contains the minimum, median, 95th percentile and maximum values of the occupancy-weighted average B-factor per residue. The column labelled ‘Q< 0.9’ lists the number of (and percentage) of residues with an average occupancy less than 0.9.

Mol	Chain	Analysed	<RSRZ>	#RSRZ>2	OWAB(Å ²)	Q<0.9
1	A	84/85 (98%)	0.79	7 (8%) 11 10	76, 104, 135, 152	0
1	B	85/85 (100%)	0.87	6 (7%) 16 14	70, 109, 135, 145	0
1	C	84/85 (98%)	0.91	11 (13%) 4 3	77, 104, 132, 148	0
1	D	85/85 (100%)	0.67	2 (2%) 56 57	72, 101, 131, 136	0
All	All	338/340 (99%)	0.81	26 (7%) 10 12	70, 105, 135, 152	0

All (26) RSRZ outliers are listed below:

Mol	Chain	Res	Type	RSRZ
1	A	35	LEU	4.6
1	C	54	LEU	3.8
1	B	56	TYR	3.3
1	C	48	TYR	3.0
1	C	102	MET	3.0
1	D	75	VAL	2.9
1	B	35	LEU	2.9
1	A	56	TYR	2.7
1	C	56	TYR	2.6
1	C	35	LEU	2.6
1	C	107	LEU	2.6
1	D	54	LEU	2.6
1	B	28	VAL	2.5
1	A	83	GLY	2.4
1	C	106	ASN	2.4
1	A	27	LEU	2.4
1	B	107	LEU	2.4
1	A	75	VAL	2.3
1	C	27	LEU	2.3
1	B	81	LEU	2.2
1	C	83	GLY	2.2

Continued on next page...

Continued from previous page...

Mol	Chain	Res	Type	RSRZ
1	A	50	MET	2.2
1	B	105	ARG	2.0
1	C	109	VAL	2.0
1	C	85	LEU	2.0
1	A	89	PRO	2.0

6.2 Non-standard residues in protein, DNA, RNA chains ⓘ

There are no non-standard protein/DNA/RNA residues in this entry.

6.3 Carbohydrates ⓘ

There are no carbohydrates in this entry.

6.4 Ligands ⓘ

In the following table, the Atoms column lists the number of modelled atoms in the group and the number defined in the chemical component dictionary. LLDF column lists the quality of electron density of the group with respect to its neighbouring residues in protein, DNA or RNA chains. The B-factors column lists the minimum, median, 95th percentile and maximum values of B factors of atoms in the group. The column labelled 'Q < 0.9' lists the number of atoms with occupancy less than 0.9.

Mol	Type	Chain	Res	Atoms	RSR	LLDF	B-factors(Å ²)	Q<0.9
2	03M	A	1	28/28	0.31	0.76	83,105,124,128	0
2	03M	C	1	28/28	0.32	0.70	89,108,121,128	0
2	03M	D	1	28/28	0.34	0.56	82,101,125,133	0
2	03M	B	1	28/28	0.30	0.52	86,103,118,129	0

6.5 Other polymers ⓘ

There are no such residues in this entry.