



Full wwPDB X-ray Structure Validation Report ⓘ

Feb 27, 2014 – 11:13 PM GMT

PDB ID : 1VGO
Title : Crystal Structure of Archaelhodopsin-2
Authors : Yoshimura, K.; Enami, N.; Murakami, M.; Okumura, H.; Ihara, K.; Kouyama, T.
Deposited on : 2004-04-28
Resolution : 2.50 Å(reported)

This is a full wwPDB validation report for a publicly released PDB entry.
We welcome your comments at validation@mail.wwpdb.org
A user guide is available at <http://wwpdb.org/ValidationPDFNotes.html>

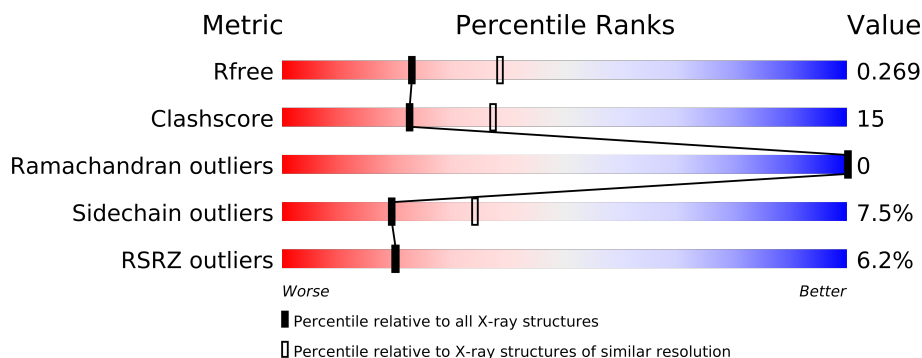
The following versions of software and data (see [references](#)) were used in the production of this report:

MolProbity	:	4.02b-467
Mogul	:	1.15 2013
Xtriage (Phenix)	:	dev-1323
EDS	:	stable22639
Percentile statistics	:	21963
Refmac	:	5.8.0049
CCP4	:	6.3.0 (Settle)
Ideal geometry (proteins)	:	Engh & Huber (2001)
Ideal geometry (DNA, RNA)	:	Parkinson et. al. (1996)
Validation Pipeline (wwPDB-VP)	:	stable22683

1 Overall quality at a glance

The reported resolution of this entry is 2.50 Å.

Percentile scores (ranging between 0-100) for global validation metrics of the entry are shown in the following graphic. The table shows the number of entries on which the scores are based.



Metric	Whole archive (#Entries)	Similar resolution (#Entries, resolution range(Å))
R_{free}	66092	2784 (2.50-2.50)
Clashscore	79885	3562 (2.50-2.50)
Ramachandran outliers	78287	3480 (2.50-2.50)
Sidechain outliers	78261	3482 (2.50-2.50)
RSRZ outliers	66119	2785 (2.50-2.50)

The table below summarises the geometric issues observed across the polymeric chains and their fit to the electron density. The red, orange, yellow and green segments on the lower bar indicate the fraction of residues that contain outliers for ≥ 3 , 2, 1 and 0 types of geometric quality criteria. The upper red bar (where present) indicates the fraction of residues that have poor fit to the electron density.

Mol	Chain	Length	Quality of chain
1	A	253	
1	B	253	

The following table lists non-polymeric compounds that are outliers for geometric or electron-density-fit criteria:

Mol	Type	Chain	Res	Geometry	Electron density
2	BNG	A	302	-	X
2	BNG	A	303	-	X
2	BNG	A	305	-	X
2	BNG	A	306	-	X
2	BNG	A	307	-	X
2	BNG	A	308	-	X

Continued on next page...

Continued from previous page...

Mol	Type	Chain	Res	Geometry	Electron density
2	BNG	A	309	-	X
2	BNG	B	310	-	X
2	BNG	B	311	-	X
3	SO4	B	402	-	X

2 Entry composition i

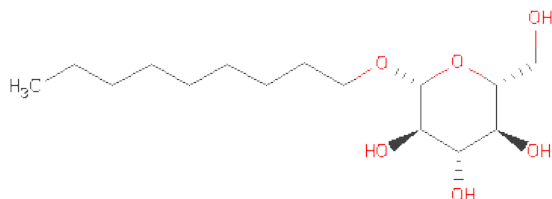
There are 5 unique types of molecules in this entry. The entry contains 3956 atoms, of which 0 are hydrogen and 0 are deuterium.

In the tables below, the ZeroOcc column contains the number of atoms modelled with zero occupancy, the AltConf column contains the number of residues with at least one atom in alternate conformation and the Trace column contains the number of residues modelled with at most 2 atoms.

- Molecule 1 is a protein called Archaelhodopsin 2.

Mol	Chain	Residues	Atoms					ZeroOcc	AltConf	Trace
1	A	233	Total	C	N	O	S	0	0	0
			1802	1202	280	316	4			
1	B	235	Total	C	N	O	S	0	0	0
			1818	1211	282	321	4			

- Molecule 2 is B-NONYLGLUCOSIDE (three-letter code: BNG) (formula: C₁₅H₃₀O₆).



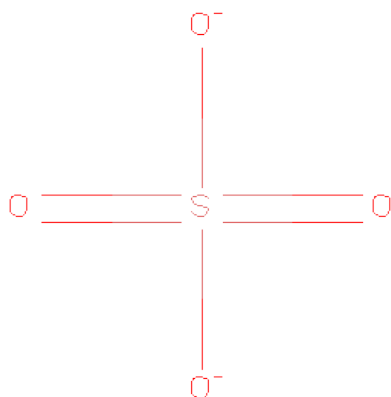
Mol	Chain	Residues	Atoms			ZeroOcc	AltConf
2	A	1	Total	C	O	0	0
			21	15	6		
2	A	1	Total	C	O	0	0
			21	15	6		
2	A	1	Total	C	O	0	0
			21	15	6		
2	A	1	Total	C	O	0	0
			21	15	6		

Continued on next page...

Continued from previous page...

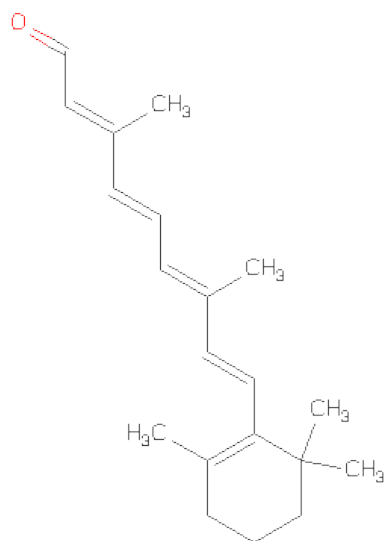
Mol	Chain	Residues	Atoms	ZeroOcc	AltConf
2	A	1	Total C O 21 15 6	0	0
2	A	1	Total C O 21 15 6	0	0
2	A	1	Total C O 21 15 6	0	0
2	A	1	Total C O 21 15 6	0	0
2	A	1	Total C O 21 15 6	0	0
2	B	1	Total C O 21 15 6	0	0
2	B	1	Total C O 21 15 6	0	0
2	B	1	Total C O 21 15 6	0	0

- Molecule 3 is SULFATE ION (three-letter code: SO4) (formula: O₄S).



Mol	Chain	Residues	Atoms	ZeroOcc	AltConf
3	A	1	Total O S 5 4 1	0	0
3	B	1	Total O S 5 4 1	0	0
3	B	1	Total O S 5 4 1	0	0

- Molecule 4 is RETINAL (three-letter code: RET) (formula: $C_{20}H_{28}O$).



Mol	Chain	Residues	Atoms		ZeroOcc	AltConf
4	A	1	Total	C	0	0
			20	20		
4	B	1	Total	C	0	0
			20	20		

- Molecule 5 is water.

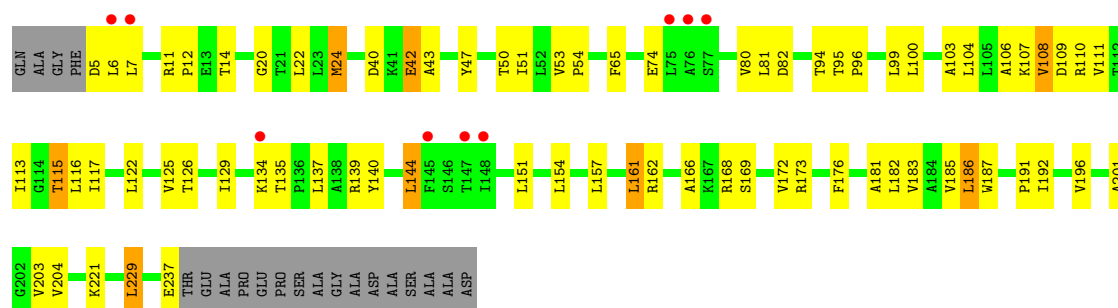
Mol	Chain	Residues	Atoms		ZeroOcc	AltConf
5	A	16	Total	O	0	0
			16	16		
5	B	13	Total	O	0	0
			13	13		

3 Residue-property plots

These plots are drawn for all protein, RNA and DNA chains in the entry. The first graphic for a chain summarises the proportions of errors displayed in the second graphic. The second graphic shows the sequence view annotated by issues in geometry and electron density. Residues are color-coded according to the number of geometric quality criteria for which they contain at least one outlier: green = 0, yellow = 1, orange = 2 and red = 3 or more. A red dot above a residue indicates a poor fit to the electron density ($RSRZ > 2$). Stretches of 2 or more consecutive residues without any outlier are shown as a green connector. Residues present in the sample, but not in the model, are shown in grey.

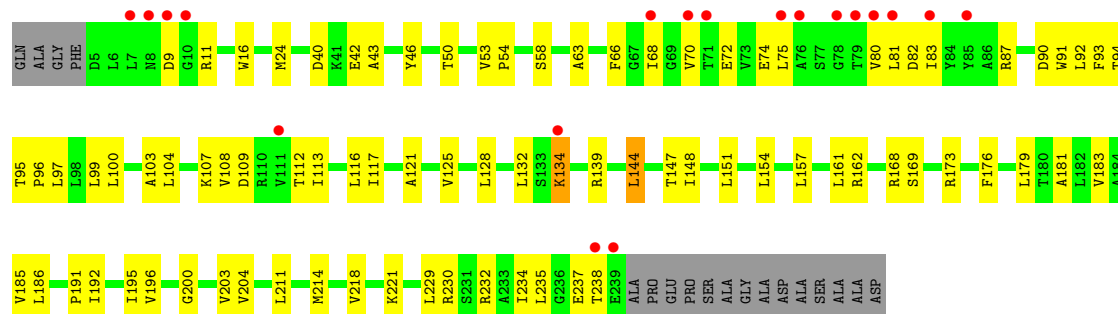
• Molecule 1: Archaeorhodopsin 2

Chain A: 



• Molecule 1: Archaeorhodopsin 2

Chain B: 



4 Data and refinement statistics

Property	Value	Source
Space group	C 2 2 21	Depositor
Cell constants a, b, c, α , β , γ	122.88Å 139.48Å 108.10Å 90.00° 90.00° 90.00°	Depositor
Resolution (Å)	14.94 – 2.50 40.58 – 2.50	Depositor EDS
% Data completeness (in resolution range)	83.5 (14.94-2.50) 83.3 (40.58-2.50)	Depositor EDS
R_{merge}	0.04	Depositor
R_{sym}	0.04	Depositor
$\langle I/\sigma(I) \rangle$ ¹	1.74 (at 2.51Å)	Xtriage
Refinement program	CNS 1.1	Depositor
R, R_{free}	0.241 , 0.268 0.242 , 0.269	Depositor DCC
R_{free} test set	1313 reflections (4.87%)	DCC
Wilson B-factor (Å ²)	57.4	Xtriage
Anisotropy	0.300	Xtriage
Bulk solvent k_{sol} (e/Å ³), B_{sol} (Å ²)	0.37 , 65.0	EDS
Estimated twinning fraction	No twinning to report.	Xtriage
L-test for twinning	$\langle L \rangle = 0.50$, $\langle L^2 \rangle = 0.34$	Xtriage
Outliers	0 of 27030 reflections	Xtriage
F_o, F_c correlation	0.93	EDS
Total number of atoms	3956	wwPDB-VP
Average B, all atoms (Å ²)	61.0	wwPDB-VP

Xtriage's analysis on translational NCS is as follows: *The largest off-origin peak in the Patterson function is 5.24% of the height of the origin peak. No significant pseudotranslation is detected.*

¹Intensities estimated from amplitudes.

5 Model quality

5.1 Standard geometry

Bond lengths and bond angles in the following residue types are not validated in this section: BNG, SO4, RET

The Z score for a bond length (or angle) is the number of standard deviations the observed value is removed from the expected value. A bond length (or angle) with $|Z| > 5$ is considered an outlier worth inspection. RMSZ is the root-mean-square of all Z scores of the bond lengths (or angles).

Mol	Chain	Bond lengths		Bond angles	
		RMSZ	$\# Z > 5$	RMSZ	$\# Z > 5$
1	A	0.39	0/1843	0.58	0/2519
1	B	0.38	0/1859	0.59	0/2541
All	All	0.39	0/3702	0.58	0/5060

There are no bond length outliers.

There are no bond angle outliers.

There are no chirality outliers.

There are no planarity outliers.

5.2 Close contacts

In the following table, the Non-H and H(model) columns list the number of non-hydrogen atoms and hydrogen atoms in the chain respectively. The H(added) column lists the number of hydrogens added by MolProbity. The Clashes column lists the number of clashes within the asymmetric unit, and the number in parentheses is this value normalized per 1000 atoms of the molecule in the chain. The Symm-Clashes column gives symmetry related clashes, in the same way as for the Clashes column.

Mol	Chain	Non-H	H(model)	H(added)	Clashes	Symm-Clashes
1	A	1802	0	1870	55	0
1	B	1818	0	1883	62	0
2	A	189	0	269	4	0
2	B	63	0	90	1	0
3	A	5	0	0	1	0
3	B	10	0	0	0	0
4	A	20	0	27	3	0
4	B	20	0	27	4	0
5	A	16	0	0	0	0
5	B	13	0	0	0	0

Continued on next page...

Continued from previous page...

Mol	Chain	Non-H	H(model)	H(added)	Clashes	Symm-Clashes
All	All	3956	0	4166	120	0

Clashscore is defined as the number of clashes calculated for the entry per 1000 atoms (including hydrogens) of the entry. The overall clashscore for this entry is 15.

All (120) close contacts within the same asymmetric unit are listed below.

Atom-1	Atom-2	Distance(Å)	Clash(Å)
1:B:94:THR:HG21	1:B:221:LYS:HE3	1.39	1.03
1:A:94:THR:HG21	1:A:221:LYS:HE3	1.48	0.95
1:A:108:VAL:HG11	1:A:161:LEU:HD22	1.67	0.77
1:A:53:VAL:HG13	1:A:94:THR:HG23	1.68	0.76
1:B:94:THR:HG21	1:B:221:LYS:CE	2.18	0.73
1:A:203:VAL:HG23	1:A:204:VAL:HG23	1.72	0.72
1:A:166:ALA:HA	1:A:173:ARG:HD3	1.72	0.72
1:B:75:LEU:HD22	1:B:139:ARG:NH2	2.05	0.72
1:B:147:THR:O	1:B:151:LEU:HD13	1.90	0.71
1:B:232:ARG:O	1:B:235:LEU:HB2	1.91	0.70
1:A:135:THR:HG22	1:A:137:LEU:H	1.57	0.69
1:B:74:GLU:HA	1:B:80:VAL:HA	1.76	0.67
1:B:50:THR:O	1:B:54:PRO:HD2	1.94	0.67
1:B:108:VAL:HB	1:B:112:THR:HG21	1.77	0.67
1:B:214:MET:O	1:B:218:VAL:HG12	1.95	0.67
1:B:53:VAL:HG13	1:B:94:THR:HG23	1.79	0.64
1:A:94:THR:HG21	1:A:221:LYS:CE	2.25	0.64
1:B:94:THR:CG2	1:B:221:LYS:HE3	2.24	0.62
1:A:196:VAL:O	1:A:203:VAL:HG22	1.98	0.62
1:A:50:THR:O	1:A:54:PRO:HD2	1.99	0.61
1:B:42:GLU:OE2	1:B:238:THR:HG23	2.01	0.61
1:B:75:LEU:HD22	1:B:139:ARG:HH21	1.64	0.61
1:B:63:ALA:HA	1:B:68:ILE:HD12	1.83	0.60
1:B:93:PHE:C	1:B:96:PRO:HD2	2.21	0.60
1:A:95:THR:OG1	1:A:96:PRO:HD3	2.04	0.58
1:B:139:ARG:HH22	2:B:312:BNG:H61	1.68	0.57
1:B:179:LEU:O	1:B:183:VAL:HG23	2.05	0.57
1:A:80:VAL:C	1:A:81:LEU:HD12	2.25	0.57
1:A:135:THR:HG22	1:A:137:LEU:N	2.19	0.56
1:A:157:LEU:O	1:A:162:ARG:HB2	2.04	0.56
1:B:103:ALA:HA	1:B:161:LEU:HD11	1.87	0.56
1:B:24:MET:HB3	1:B:58:SER:HB3	1.88	0.56
1:B:103:ALA:HA	1:B:161:LEU:CD1	2.34	0.56
1:B:107:LYS:HG3	1:B:168:ARG:HD3	1.87	0.55
1:B:16:TRP:CE3	1:B:211:LEU:HD23	2.42	0.55

Continued on next page...

Continued from previous page...

Atom-1	Atom-2	Distance(Å)	Clash(Å)
1:A:181:ALA:O	1:A:185:VAL:HG12	2.06	0.54
1:B:185:VAL:HG13	1:B:186:LEU:N	2.22	0.54
1:A:129:ILE:HD13	2:A:301:BNG:H5'1	1.90	0.53
1:B:113:ILE:O	1:B:117:ILE:HD13	2.09	0.53
1:B:46:TYR:CD2	1:B:234:ILE:HB	2.44	0.53
1:B:109:ASP:O	1:B:112:THR:HG22	2.08	0.53
1:A:137:LEU:HA	2:A:302:BNG:H2'2	1.90	0.52
1:A:20:GLY:O	1:A:24:MET:HB2	2.09	0.52
1:A:201:ALA:HA	2:A:304:BNG:H1	1.90	0.52
1:B:40:ASP:HB3	1:B:43:ALA:HB3	1.91	0.52
1:A:42:GLU:HG3	1:A:237:GLU:HB3	1.91	0.52
1:A:182:LEU:O	1:A:186:LEU:HB2	2.10	0.52
1:B:191:PRO:HB3	4:B:261:RET:H183	1.91	0.52
1:B:230:ARG:O	1:B:230:ARG:HG2	2.09	0.52
1:A:144:LEU:HD11	2:A:303:BNG:H4'2	1.90	0.52
1:B:144:LEU:HD13	1:B:148:ILE:HD11	1.92	0.52
1:A:122:LEU:O	1:A:125:VAL:HG12	2.10	0.51
1:A:47:TYR:O	1:A:51:ILE:HG13	2.10	0.51
1:B:185:VAL:HG13	1:B:186:LEU:H	1.75	0.51
1:A:111:VAL:O	1:A:115:THR:HG22	2.11	0.51
1:B:91:TRP:CD1	4:B:261:RET:H14	2.46	0.51
1:B:109:ASP:O	1:B:112:THR:CG2	2.59	0.51
1:B:121:ALA:O	1:B:125:VAL:HG12	2.10	0.51
1:A:125:VAL:O	1:A:129:ILE:HG13	2.12	0.50
1:A:40:ASP:HB3	1:A:43:ALA:HB3	1.92	0.50
1:A:192:ILE:O	1:A:196:VAL:HG22	2.11	0.50
1:A:5:ASP:HA	1:A:12:PRO:HA	1.93	0.49
1:A:7:LEU:N	1:A:7:LEU:HD12	2.28	0.49
1:B:203:VAL:HG23	1:B:204:VAL:HG23	1.93	0.49
1:B:144:LEU:HD13	1:B:148:ILE:CD1	2.43	0.48
1:B:92:LEU:O	1:B:96:PRO:HG2	2.12	0.48
1:B:66:PHE:HB2	1:B:68:ILE:HG13	1.95	0.48
1:A:11:ARG:O	1:A:14:THR:HG23	2.13	0.48
1:B:195:ILE:O	1:B:200:GLY:HA3	2.14	0.48
1:B:134:LYS:NZ	1:B:134:LYS:HB3	2.29	0.48
1:A:110:ARG:HG3	1:A:110:ARG:HH11	1.78	0.48
1:A:125:VAL:HG13	1:A:126:THR:N	2.29	0.47
1:A:110:ARG:NH1	1:A:110:ARG:HG3	2.30	0.47
1:A:106:ALA:O	1:A:107:LYS:HB2	2.15	0.47
1:A:80:VAL:O	1:A:81:LEU:HD12	2.16	0.46
1:B:95:THR:N	1:B:96:PRO:CD	2.78	0.46
1:B:53:VAL:HB	1:B:54:PRO:CD	2.45	0.46

Continued on next page...

Continued from previous page...

Atom-1	Atom-2	Distance(Å)	Clash(Å)
1:B:128:LEU:O	1:B:132:LEU:HG	2.15	0.46
1:B:70:VAL:HA	1:B:83:ILE:O	2.15	0.46
1:A:95:THR:N	1:A:96:PRO:CD	2.78	0.46
1:A:191:PRO:HB3	4:A:260:RET:H183	1.97	0.46
1:A:122:LEU:HA	1:A:125:VAL:HG12	1.99	0.45
1:B:169:SER:O	1:B:173:ARG:HG2	2.16	0.45
4:B:261:RET:H161	4:B:261:RET:H8	1.99	0.45
4:A:260:RET:H8	4:A:260:RET:H161	1.98	0.45
1:B:93:PHE:O	1:B:97:LEU:HG	2.16	0.45
1:B:144:LEU:O	1:B:148:ILE:HG13	2.17	0.45
1:A:169:SER:OG	1:A:172:VAL:HG23	2.17	0.45
1:B:72:GLU:HA	1:B:81:LEU:O	2.16	0.45
1:B:181:ALA:O	1:B:185:VAL:HG12	2.18	0.44
1:B:93:PHE:O	1:B:96:PRO:HD2	2.18	0.44
1:B:107:LYS:CG	1:B:168:ARG:HD3	2.47	0.44
4:A:260:RET:H7	4:A:260:RET:H181	1.89	0.44
1:B:109:ASP:CG	1:B:112:THR:HG22	2.38	0.43
1:B:162:ARG:HA	1:B:176:PHE:CE2	2.52	0.43
1:A:135:THR:O	1:A:139:ARG:HG3	2.18	0.43
1:B:211:LEU:C	1:B:211:LEU:HD13	2.38	0.43
1:A:134:LYS:O	1:A:134:LYS:HD2	2.19	0.43
1:B:196:VAL:O	1:B:203:VAL:HG22	2.19	0.42
1:A:53:VAL:HB	1:A:54:PRO:CD	2.50	0.42
1:B:95:THR:OG1	1:B:96:PRO:HD3	2.19	0.42
1:B:90:ASP:OD1	1:B:90:ASP:C	2.56	0.42
1:B:74:GLU:O	1:B:134:LYS:HD2	2.20	0.42
1:A:94:THR:CG2	1:A:221:LYS:HE3	2.35	0.42
1:A:183:VAL:HG13	1:A:187:TRP:CD2	2.55	0.42
1:A:40:ASP:HB2	1:B:237:GLU:OE1	2.21	0.41
1:B:144:LEU:CD1	1:B:148:ILE:HD11	2.50	0.41
1:A:7:LEU:H	1:A:7:LEU:HD12	1.85	0.41
4:B:261:RET:H7	4:B:261:RET:H181	1.90	0.41
1:A:74:GLU:O	1:A:134:LYS:HG2	2.20	0.41
1:A:6:LEU:HD12	1:A:65:PHE:HE1	1.85	0.41
1:A:168:ARG:HB3	3:A:400:SO4:O1	2.20	0.41
1:A:103:ALA:HB1	1:A:113:ILE:HG12	2.03	0.41
1:B:192:ILE:O	1:B:195:ILE:HG22	2.20	0.41
1:A:47:TYR:CE2	1:A:229:LEU:HG	2.56	0.40
1:A:109:ASP:OD2	1:A:111:VAL:HB	2.21	0.40
1:B:87:ARG:HD3	1:B:91:TRP:CH2	2.56	0.40
1:A:113:ILE:O	1:A:117:ILE:HD13	2.20	0.40
1:A:161:LEU:HB3	1:A:176:PHE:CZ	2.57	0.40

Continued on next page...

Continued from previous page...

Atom-1	Atom-2	Distance(Å)	Clash(Å)
1:A:140:TYR:N	1:A:140:TYR:CD2	2.87	0.40

There are no symmetry-related clashes.

5.3 Torsion angles

5.3.1 Protein backbone ⓘ

In the following table, the Percentiles column shows the percent Ramachandran outliers of the chain as a percentile score with respect to all X-ray entries followed by that with respect to entries of similar resolution. The Analysed column shows the number of residues for which the backbone conformation was analysed, and the total number of residues.

Mol	Chain	Analysed	Favoured	Allowed	Outliers	Percentiles	
1	A	231/253 (91%)	224 (97%)	7 (3%)	0	100	100
1	B	233/253 (92%)	223 (96%)	10 (4%)	0	100	100
All	All	464/506 (92%)	447 (96%)	17 (4%)	0	100	100

There are no Ramachandran outliers to report.

5.3.2 Protein sidechains ⓘ

In the following table, the Percentiles column shows the percent sidechain outliers of the chain as a percentile score with respect to all X-ray entries followed by that with respect to entries of similar resolution. The Analysed column shows the number of residues for which the sidechain conformation was analysed, and the total number of residues.

Mol	Chain	Analysed	Rotameric	Outliers	Percentiles	
1	A	185/196 (94%)	169 (91%)	16 (9%)	15	27
1	B	187/196 (95%)	175 (94%)	12 (6%)	25	43
All	All	372/392 (95%)	344 (92%)	28 (8%)	19	34

All (28) residues with a non-rotameric sidechain are listed below:

Mol	Chain	Res	Type
1	A	22	LEU
1	A	24	MET
1	A	42	GLU

Continued on next page...

Continued from previous page...

Mol	Chain	Res	Type
1	A	82	ASP
1	A	99	LEU
1	A	100	LEU
1	A	104	LEU
1	A	108	VAL
1	A	115	THR
1	A	116	LEU
1	A	144	LEU
1	A	151	LEU
1	A	154	LEU
1	A	161	LEU
1	A	186	LEU
1	A	229	LEU
1	B	9	ASP
1	B	11	ARG
1	B	82	ASP
1	B	99	LEU
1	B	100	LEU
1	B	104	LEU
1	B	116	LEU
1	B	134	LYS
1	B	144	LEU
1	B	154	LEU
1	B	157	LEU
1	B	229	LEU

Some sidechains can be flipped to improve hydrogen bonding and reduce clashes. All (2) such sidechains are listed below:

Mol	Chain	Res	Type
1	A	177	ASN
1	B	177	ASN

5.3.3 RNA ⓘ

There are no RNA chains in this entry.

5.4 Non-standard residues in protein, DNA, RNA chains ⓘ

There are no non-standard protein/DNA/RNA residues in this entry.

5.5 Carbohydrates ⓘ

There are no carbohydrates in this entry.

5.6 Ligand geometry ⓘ

17 ligands are modelled in this entry.

In the following table, the Counts columns list the number of bonds (or angles) for which Mogul statistics could be retrieved, the number of bonds (or angles) that are observed in the model and the number of bonds (or angles) that are defined in the chemical component dictionary. The Link column lists molecule types, if any, to which the group is linked. The Z score for a bond length (or angle) is the number of standard deviations the observed value is removed from the expected value. A bond length (or angle) with $|Z| > 2$ is considered an outlier worth inspection. RMSZ is the root-mean-square of all Z scores of the bond lengths (or angles).

Mol	Type	Chain	Res	Link	Bond lengths			Bond angles		
					Counts	RMSZ	$\# Z > 2$	Counts	RMSZ	$\# Z > 2$
4	RET	A	260	1	19,20,21	2.95	5 (26%)	26,27,28	1.72	8 (30%)
2	BNG	A	301	-	21,21,21	1.56	5 (23%)	26,26,26	0.81	1 (3%)
2	BNG	A	302	-	21,21,21	1.87	7 (33%)	26,26,26	0.87	0
2	BNG	A	303	-	21,21,21	2.36	6 (28%)	26,26,26	0.88	1 (3%)
2	BNG	A	304	-	21,21,21	1.80	6 (28%)	26,26,26	0.87	1 (3%)
2	BNG	A	305	-	21,21,21	1.93	7 (33%)	26,26,26	1.08	2 (7%)
2	BNG	A	306	-	21,21,21	2.83	7 (33%)	26,26,26	1.28	4 (15%)
2	BNG	A	307	-	21,21,21	2.57	5 (23%)	26,26,26	1.13	3 (11%)
2	BNG	A	308	-	21,21,21	2.74	6 (28%)	26,26,26	1.29	4 (15%)
2	BNG	A	309	-	21,21,21	1.51	5 (23%)	26,26,26	0.83	1 (3%)
3	SO4	A	400	-	4,4,4	0.20	0	6,6,6	0.13	0
4	RET	B	261	1	19,20,21	3.13	4 (21%)	26,27,28	1.65	8 (30%)
2	BNG	B	310	-	21,21,21	2.66	6 (28%)	26,26,26	0.81	0
2	BNG	B	311	-	21,21,21	2.52	6 (28%)	26,26,26	0.87	0
2	BNG	B	312	-	21,21,21	2.70	5 (23%)	26,26,26	1.71	3 (11%)
3	SO4	B	401	-	4,4,4	0.30	0	6,6,6	0.08	0
3	SO4	B	402	-	4,4,4	0.38	0	6,6,6	0.11	0

In the following table, the Chirals column lists the number of chiral outliers, the number of chiral centers analysed, the number of these observed in the model and the number defined in the chemical component dictionary. Similar counts are reported in the Torsion and Rings columns. '-' means no outliers of that kind were identified.

Mol	Type	Chain	Res	Link	Chirals	Torsions	Rings
4	RET	A	260	1	-	0/13/30/31	0/1/1/1
2	BNG	A	301	-	-	0/12/32/32	0/1/1/1
2	BNG	A	302	-	-	0/12/32/32	0/1/1/1
2	BNG	A	303	-	-	0/12/32/32	0/1/1/1
2	BNG	A	304	-	-	0/12/32/32	0/1/1/1
2	BNG	A	305	-	-	0/12/32/32	0/1/1/1
2	BNG	A	306	-	-	0/12/32/32	0/1/1/1
2	BNG	A	307	-	-	0/12/32/32	0/1/1/1
2	BNG	A	308	-	-	0/12/32/32	0/1/1/1
2	BNG	A	309	-	-	0/12/32/32	0/1/1/1
3	SO4	A	400	-	-	0/0/0/0	0/0/0/0
4	RET	B	261	1	-	0/13/30/31	0/1/1/1
2	BNG	B	310	-	-	0/12/32/32	0/1/1/1
2	BNG	B	311	-	-	0/12/32/32	0/1/1/1
2	BNG	B	312	-	-	0/12/32/32	0/1/1/1
3	SO4	B	401	-	-	0/0/0/0	0/0/0/0
3	SO4	B	402	-	-	0/0/0/0	0/0/0/0

All (80) bond length outliers are listed below:

Mol	Chain	Res	Type	Atoms	Z	Observed(Å)	Ideal(Å)
4	B	261	RET	C1-C6	10.41	1.68	1.53
4	A	260	RET	C1-C6	9.51	1.67	1.53
2	A	306	BNG	O1-C1	8.59	1.56	1.40
2	A	308	BNG	O1-C1	8.16	1.55	1.40
2	A	307	BNG	O1-C1	7.06	1.53	1.40
4	B	261	RET	C5-C6	6.97	1.45	1.34
2	B	310	BNG	O1-C1	6.87	1.52	1.40
4	A	260	RET	C5-C6	6.65	1.45	1.34
2	B	312	BNG	O1-C1	6.56	1.52	1.40
2	B	312	BNG	O5-C5	5.98	1.59	1.44
2	B	311	BNG	O5-C5	5.50	1.58	1.44
2	B	311	BNG	C3-C2	5.43	1.66	1.52
2	A	303	BNG	C4-C5	5.35	1.64	1.53
2	A	303	BNG	O5-C5	5.17	1.57	1.44
2	B	310	BNG	C3-C2	5.12	1.66	1.52
2	B	312	BNG	O4-C4	5.06	1.55	1.43
2	B	311	BNG	O4-C4	5.02	1.55	1.43
2	A	308	BNG	O5-C5	4.97	1.56	1.44
2	A	307	BNG	O5-C5	4.86	1.56	1.44
2	A	306	BNG	O5-C5	4.75	1.56	1.44
2	B	312	BNG	C3-C2	4.72	1.64	1.52
2	A	306	BNG	C3-C2	4.65	1.64	1.52

Continued on next page...

Continued from previous page...

Mol	Chain	Res	Type	Atoms	Z	Observed(Å)	Ideal(Å)
2	B	310	BNG	O4-C4	4.64	1.54	1.43
2	B	310	BNG	O5-C5	4.63	1.55	1.44
2	B	311	BNG	O1-C1	4.61	1.48	1.40
2	A	308	BNG	C3-C2	4.50	1.64	1.52
2	A	307	BNG	C3-C2	4.42	1.64	1.52
2	A	304	BNG	C4-C5	4.41	1.62	1.53
2	A	307	BNG	O4-C4	4.37	1.53	1.43
2	A	306	BNG	O4-C4	4.30	1.53	1.43
2	A	308	BNG	O4-C4	4.21	1.53	1.43
2	A	305	BNG	C4-C5	4.13	1.62	1.53
2	A	303	BNG	O1-C1	4.04	1.47	1.40
2	A	301	BNG	O1-C1	4.02	1.47	1.40
2	A	302	BNG	C4-C5	3.89	1.61	1.53
2	A	309	BNG	O1-C1	3.84	1.47	1.40
2	A	303	BNG	C1-C2	3.81	1.63	1.52
2	A	305	BNG	C3-C2	3.76	1.62	1.52
2	A	302	BNG	O1-C1	3.54	1.46	1.40
2	A	303	BNG	O4-C4	3.37	1.51	1.43
2	A	305	BNG	O5-C5	3.37	1.52	1.44
2	A	304	BNG	O1-C1	3.33	1.46	1.40
2	A	302	BNG	C1-C2	3.27	1.62	1.52
2	A	303	BNG	C3-C2	3.26	1.61	1.52
2	A	302	BNG	O5-C5	3.18	1.52	1.44
4	B	261	RET	C7-C6	3.11	1.57	1.46
2	A	302	BNG	O4-C4	2.99	1.50	1.43
2	A	302	BNG	C3-C2	2.96	1.60	1.52
4	A	260	RET	C7-C6	2.94	1.56	1.46
2	A	305	BNG	O1-C1	2.94	1.45	1.40
2	A	301	BNG	C4-C5	2.90	1.59	1.53
2	B	310	BNG	O5-C1	2.86	1.49	1.41
2	A	304	BNG	C3-C2	2.78	1.59	1.52
2	A	306	BNG	O5-C1	2.76	1.48	1.41
2	A	305	BNG	O4-C4	2.75	1.49	1.43
2	A	304	BNG	C1-C2	2.73	1.60	1.52
2	B	312	BNG	C1-C2	2.71	1.60	1.52
2	A	308	BNG	O5-C1	2.68	1.48	1.41
2	A	309	BNG	C3-C2	2.64	1.59	1.52
2	A	309	BNG	O5-C5	2.60	1.50	1.44
2	A	304	BNG	O4-C4	2.58	1.49	1.43
4	A	260	RET	C2-C1	2.54	1.60	1.54
2	A	301	BNG	C1-C2	2.54	1.60	1.52
2	A	307	BNG	O5-C1	2.49	1.48	1.41

Continued on next page...

Continued from previous page...

Mol	Chain	Res	Type	Atoms	Z	Observed(Å)	Ideal(Å)
2	A	304	BNG	O5-C5	2.45	1.50	1.44
2	A	309	BNG	C4-C5	2.45	1.58	1.53
4	B	261	RET	C2-C1	2.37	1.60	1.54
2	B	310	BNG	C2'-C1'	2.37	1.61	1.50
2	A	305	BNG	O5-C1	2.34	1.47	1.41
2	A	301	BNG	C3-C2	2.34	1.58	1.52
2	A	305	BNG	C1-C2	2.32	1.59	1.52
2	A	306	BNG	C1-C2	2.30	1.59	1.52
2	B	311	BNG	C2'-C1'	2.27	1.61	1.50
2	A	306	BNG	C2'-C1'	2.17	1.60	1.50
2	A	308	BNG	C2'-C1'	2.12	1.60	1.50
2	A	302	BNG	O5-C1	2.04	1.47	1.41
4	A	260	RET	C2-C3	-2.03	1.46	1.52
2	A	301	BNG	O5-C5	2.03	1.49	1.44
2	B	311	BNG	C4-C5	2.03	1.57	1.53
2	A	309	BNG	O4-C4	2.03	1.47	1.43

All (36) bond angle outliers are listed below:

Mol	Chain	Res	Type	Atoms	Z	Observed(°)	Ideal(°)
2	B	312	BNG	O1-C1-C2	6.87	116.92	108.18
2	B	312	BNG	C1'-O1-C1	3.49	120.24	113.96
2	A	306	BNG	O1-C1-C2	3.40	112.50	108.18
4	A	260	RET	C19-C9-C8	3.23	123.31	118.09
4	A	260	RET	C1-C6-C5	-3.18	118.00	122.60
4	B	261	RET	C19-C9-C8	3.07	123.06	118.09
2	A	308	BNG	C1'-O1-C1	3.02	119.39	113.96
4	B	261	RET	C1-C6-C5	-2.98	118.28	122.60
2	A	308	BNG	O1-C1-C2	2.94	111.92	108.18
4	A	260	RET	C8-C9-C10	-2.92	114.49	118.97
2	A	305	BNG	C1'-O1-C1	-2.83	108.86	113.96
4	B	261	RET	C7-C8-C9	-2.65	122.25	126.22
4	B	261	RET	C8-C9-C10	-2.57	115.02	118.97
4	A	260	RET	C18-C5-C6	-2.55	121.62	124.51
4	A	260	RET	C20-C13-C12	2.54	122.19	118.09
4	B	261	RET	C18-C5-C6	-2.53	121.64	124.51
2	A	306	BNG	C1'-O1-C1	2.52	118.50	113.96
4	A	260	RET	C1-C6-C7	2.52	122.68	115.69
4	B	261	RET	C1-C6-C7	2.40	122.35	115.69
2	A	303	BNG	O5-C5-C6	2.39	112.22	106.34
2	A	307	BNG	C6-C5-C4	-2.37	107.28	113.00
4	A	260	RET	C7-C8-C9	-2.36	122.69	126.22

Continued on next page...

Continued from previous page...

Mol	Chain	Res	Type	Atoms	Z	Observed(°)	Ideal(°)
2	A	307	BNG	C3-C4-C5	-2.28	106.14	110.20
4	A	260	RET	C10-C11-C12	-2.25	115.65	123.24
4	B	261	RET	C20-C13-C12	2.21	121.67	118.09
2	A	305	BNG	O5-C5-C6	2.21	111.77	106.34
4	B	261	RET	C10-C11-C12	-2.20	115.83	123.24
2	A	308	BNG	C3-C4-C5	-2.18	106.32	110.20
2	A	309	BNG	C1'-O1-C1	-2.15	110.08	113.96
2	B	312	BNG	C4-C3-C2	-2.11	106.91	110.82
2	A	308	BNG	C6-C5-C4	-2.07	108.00	113.00
2	A	304	BNG	O5-C5-C6	2.06	111.40	106.34
2	A	306	BNG	C6-C5-C4	-2.06	108.02	113.00
2	A	307	BNG	O5-C5-C6	2.02	111.30	106.34
2	A	306	BNG	O5-C1-C2	-2.01	106.19	110.31
2	A	301	BNG	C6-C5-C4	-2.01	108.15	113.00

There are no chirality outliers.

There are no torsion outliers.

There are no ring outliers.

5.7 Other polymers ⓘ

There are no such residues in this entry.

5.8 Polymer linkage issues

There are no chain breaks in this entry.

6 Fit of model and data ⓘ

6.1 Protein, DNA and RNA chains ⓘ

In the following table, the column labelled ‘#RSRZ > 2’ contains the number (and percentage) of RSRZ outliers, followed by percent RSRZ outliers for the chain as percentile scores relative to all X-ray entries and entries of similar resolution. The OWAB column contains the minimum, median, 95th percentile and maximum values of the occupancy-weighted average B-factor per residue. The column labelled ‘Q < 0.9’ lists the number of (and percentage) of residues with an average occupancy less than 0.9.

Mol	Chain	Analysed	<RSRZ>	#RSRZ>2	OWAB(Å ²)	Q<0.9
1	A	233/253 (92%)	0.09	9 (3%) 37 38	40, 51, 82, 94	0
1	B	235/253 (92%)	0.18	19 (8%) 12 11	41, 58, 96, 109	0
All	All	468/506 (92%)	0.13	28 (5%) 20 21	40, 54, 88, 109	0

All (28) RSRZ outliers are listed below:

Mol	Chain	Res	Type	RSRZ
1	B	78	GLY	5.4
1	A	76	ALA	4.6
1	B	79	THR	4.1
1	B	7	LEU	4.1
1	B	239	GLU	3.8
1	B	238	THR	3.3
1	A	6	LEU	3.3
1	B	10	GLY	3.1
1	A	75	LEU	3.0
1	A	148	ILE	2.9
1	A	134	LYS	2.8
1	B	85	TYR	2.7
1	B	68	ILE	2.7
1	B	8	ASN	2.7
1	B	9	ASP	2.6
1	B	76	ALA	2.5
1	A	7	LEU	2.4
1	B	70	VAL	2.4
1	B	71	THR	2.4
1	A	145	PHE	2.2
1	B	134	LYS	2.2
1	B	83	ILE	2.2
1	B	80	VAL	2.1
1	B	111	VAL	2.1

Continued on next page...

Continued from previous page...

Mol	Chain	Res	Type	RSRZ
1	B	81	LEU	2.0
1	A	147	THR	2.0
1	B	75	LEU	2.0
1	A	77	SER	2.0

6.2 Non-standard residues in protein, DNA, RNA chains ⓘ

There are no non-standard protein/DNA/RNA residues in this entry.

6.3 Carbohydrates ⓘ

There are no carbohydrates in this entry.

6.4 Ligands ⓘ

In the following table, the Atoms column lists the number of modelled atoms in the group and the number defined in the chemical component dictionary. LLDF column lists the quality of electron density of the group with respect to its neighbouring residues in protein, DNA or RNA chains. The B-factors column lists the minimum, median, 95th percentile and maximum values of B factors of atoms in the group. The column labelled 'Q< 0.9' lists the number of atoms with occupancy less than 0.9.

Mol	Type	Chain	Res	Atoms	RSR	LLDF	B-factors(Å ²)	Q<0.9
3	SO4	B	402	5/5	0.52	22.55	157,157,158,158	0
2	BNG	A	308	21/21	0.53	21.67	128,138,140,140	0
2	BNG	A	309	21/21	0.56	9.01	127,135,137,138	0
2	BNG	A	303	21/21	0.72	5.73	126,137,141,141	0
2	BNG	A	306	21/21	0.31	4.89	105,110,112,112	0
2	BNG	A	307	21/21	0.32	4.70	112,121,123,124	0
2	BNG	A	305	21/21	0.40	4.28	92,103,108,108	0
2	BNG	B	311	21/21	0.23	3.09	77,91,98,100	0
2	BNG	B	310	21/21	0.33	2.99	67,95,101,105	0
2	BNG	A	302	21/21	0.29	2.09	86,113,118,120	0
2	BNG	B	312	21/21	0.31	1.52	107,111,113,114	0
2	BNG	A	304	21/21	0.26	1.43	89,100,106,106	0
4	RET	B	261	20/21	0.15	1.11	47,50,52,54	0
2	BNG	A	301	21/21	0.27	0.99	74,77,79,84	0
4	RET	A	260	20/21	0.20	0.67	39,43,46,46	0
3	SO4	B	401	5/5	0.16	-0.71	79,79,82,83	0
3	SO4	A	400	5/5	0.11	-3.20	74,75,75,77	0

6.5 Other polymers ⓘ

There are no such residues in this entry.