



Full wwPDB X-ray Structure Validation Report

Feb 27, 2014 – 11:08 PM GMT

PDB ID : 1VGR
Title : Formyl-CoA transferase mutant Asp169 to Glu
Authors : Ricagno, S.; Jonsson, S.; Richards, N.G.; Lindqvist, Y.
Deposited on : 2004-04-28
Resolution : 2.10 Å(reported)

This is a full wwPDB validation report for a publicly released PDB entry.
We welcome your comments at validation@mail.wwpdb.org
A user guide is available at <http://wwpdb.org/ValidationPDFNotes.html>

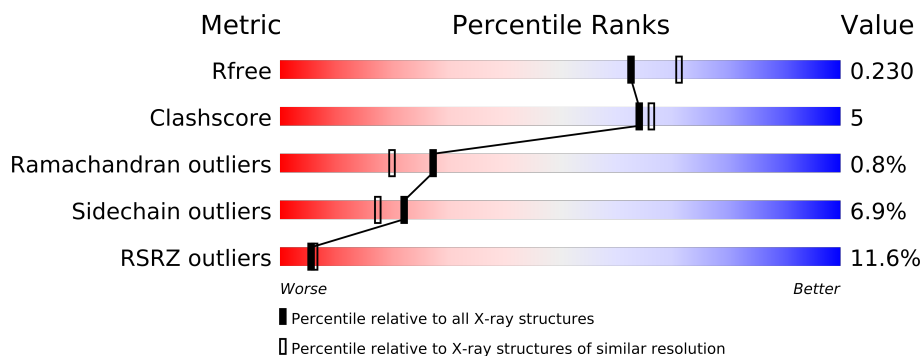
The following versions of software and data (see [references](#)) were used in the production of this report:

MolProbity : 4.02b-467
Mogul : 1.15 2013
Xtriage (Phenix) : dev-1323
EDS : stable22639
Percentile statistics : 21963
Refmac : 5.8.0049
CCP4 : 6.3.0 (Settle)
Ideal geometry (proteins) : Engh & Huber (2001)
Ideal geometry (DNA, RNA) : Parkinson et. al. (1996)
Validation Pipeline (wwPDB-VP) : stable22683

1 Overall quality at a glance

The reported resolution of this entry is 2.10 Å.

Percentile scores (ranging between 0-100) for global validation metrics of the entry are shown in the following graphic. The table shows the number of entries on which the scores are based.



Metric	Whole archive (#Entries)	Similar resolution (#Entries, resolution range(Å))
R_{free}	66092	3012 (2.10-2.10)
Clashscore	79885	3649 (2.10-2.10)
Ramachandran outliers	78287	3610 (2.10-2.10)
Sidechain outliers	78261	3611 (2.10-2.10)
RSRZ outliers	66119	3013 (2.10-2.10)

The table below summarises the geometric issues observed across the polymeric chains and their fit to the electron density. The red, orange, yellow and green segments on the lower bar indicate the fraction of residues that contain outliers for ≥ 3 , 2, 1 and 0 types of geometric quality criteria. The upper red bar (where present) indicates the fraction of residues that have poor fit to the electron density.

Mol	Chain	Length	Quality of chain
1	A	427	
1	B	427	

2 Entry composition i

There are 3 unique types of molecules in this entry. The entry contains 7177 atoms, of which 0 are hydrogen and 0 are deuterium.

In the tables below, the ZeroOcc column contains the number of atoms modelled with zero occupancy, the AltConf column contains the number of residues with at least one atom in alternate conformation and the Trace column contains the number of residues modelled with at most 2 atoms.

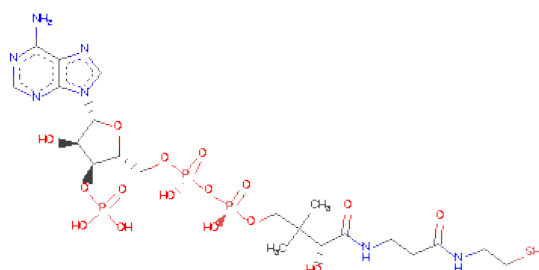
- Molecule 1 is a protein called Formyl-coenzyme A transferase.

Mol	Chain	Residues	Atoms					ZeroOcc	AltConf	Trace
1	A	427	Total	C	N	O	S	0	0	0
			3314	2097	568	626	23			
1	B	427	Total	C	N	O	S	4	0	0
			3314	2097	568	626	23			

There are 4 discrepancies between the modelled and reference sequences:

Chain	Residue	Modelled	Actual	Comment	Reference
A	169	GLU	ASP	ENGINEERED	UNP O06644
A	186	ILE	MET	SEE REMARK 999	UNP O06644
B	169	GLU	ASP	ENGINEERED	UNP O06644
B	186	ILE	MET	SEE REMARK 999	UNP O06644

- Molecule 2 is COENZYME A (three-letter code: COA) (formula: $C_{21}H_{36}N_7O_{16}P_3S$).



Mol	Chain	Residues	Atoms						ZeroOcc	AltConf
2	A	1	Total 48	C 21	N 7	O 16	P 3	S 1	0	0
2	B	1	Total 48	C 21	N 7	O 16	P 3	S 1	0	0

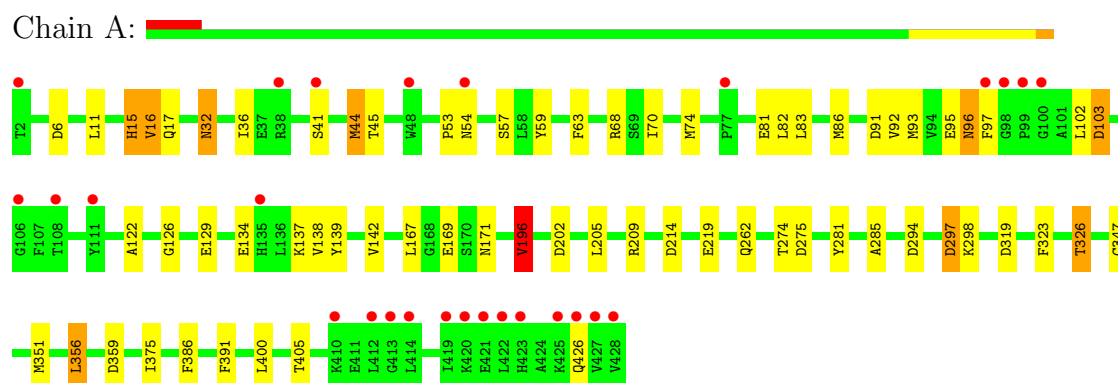
- Molecule 3 is water.

Mol	Chain	Residues	Atoms		ZeroOcc	AltConf
3	A	260	Total 260	O 260	0	0
3	B	193	Total 193	O 193	0	0

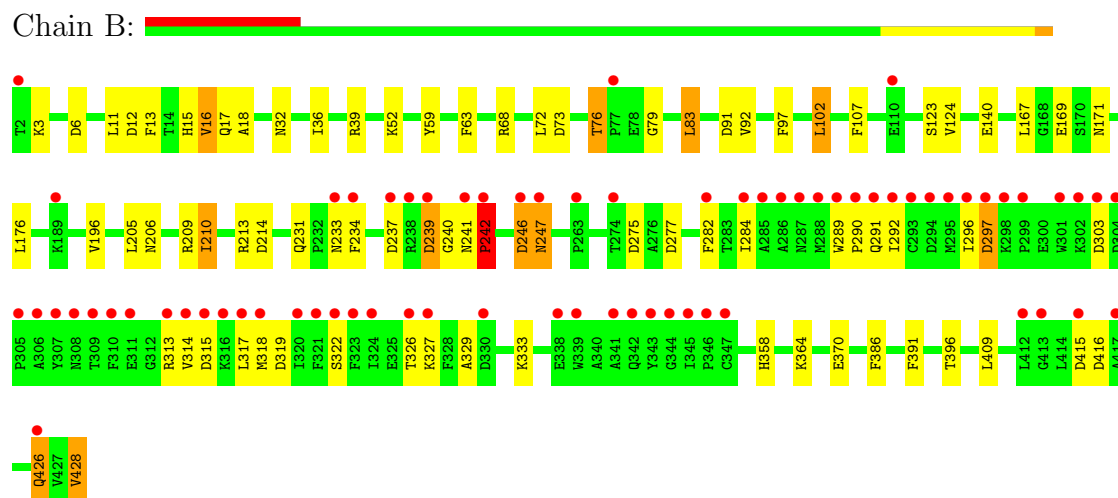
3 Residue-property plots

These plots are drawn for all protein, RNA and DNA chains in the entry. The first graphic for a chain summarises the proportions of errors displayed in the second graphic. The second graphic shows the sequence view annotated by issues in geometry and electron density. Residues are color-coded according to the number of geometric quality criteria for which they contain at least one outlier: green = 0, yellow = 1, orange = 2 and red = 3 or more. A red dot above a residue indicates a poor fit to the electron density ($RSRZ > 2$). Stretches of 2 or more consecutive residues without any outlier are shown as a green connector. Residues present in the sample, but not in the model, are shown in grey.

- Molecule 1: Formyl-coenzyme A transferase



- Molecule 1: Formyl-coenzyme A transferase



4 Data and refinement statistics

Property	Value	Source
Space group	I 4	Depositor
Cell constants a, b, c, α , β , γ	150.04Å 150.04Å 99.64Å 90.00° 90.00° 90.00°	Depositor
Resolution (Å)	19.80 – 2.10 19.76 – 2.10	Depositor EDS
% Data completeness (in resolution range)	100.0 (19.80-2.10) 100.0 (19.76-2.10)	Depositor EDS
R_{merge}	(Not available)	Depositor
R_{sym}	0.11	Depositor
$\langle I/\sigma(I) \rangle$ ¹	1.87 (at 2.09Å)	Xtriage
Refinement program	REFMAC 5.1.24	Depositor
R, R_{free}	0.182 , 0.220 0.192 , 0.230	Depositor DCC
R_{free} test set	3275 reflections (5.36%)	DCC
Wilson B-factor (Å ²)	29.5	Xtriage
Anisotropy	0.025	Xtriage
Bulk solvent k_{sol} (e/Å ³), B_{sol} (Å ²)	0.41 , 55.5	EDS
Estimated twinning fraction	0.022 for -k,-h,-l	Xtriage
L-test for twinning	$\langle L \rangle = 0.49$, $\langle L^2 \rangle = 0.32$	Xtriage
Outliers	0 of 64369 reflections	Xtriage
F_o, F_c correlation	0.94	EDS
Total number of atoms	7177	wwPDB-VP
Average B, all atoms (Å ²)	43.0	wwPDB-VP

Xtriage's analysis on translational NCS is as follows: *The largest off-origin peak in the Patterson function is 3.59% of the height of the origin peak. No significant pseudotranslation is detected.*

¹Intensities estimated from amplitudes.

5 Model quality i

5.1 Standard geometry i

Bond lengths and bond angles in the following residue types are not validated in this section: COA

The Z score for a bond length (or angle) is the number of standard deviations the observed value is removed from the expected value. A bond length (or angle) with $|Z| > 5$ is considered an outlier worth inspection. RMSZ is the root-mean-square of all Z scores of the bond lengths (or angles).

Mol	Chain	Bond lengths		Bond angles	
		RMSZ	# $ Z > 5$	RMSZ	# $ Z > 5$
1	A	0.61	0/3388	0.81	9/4581 (0.2%)
1	B	0.59	0/3388	0.84	15/4581 (0.3%)
All	All	0.60	0/6776	0.82	24/9162 (0.3%)

There are no bond length outliers.

All (24) bond angle outliers are listed below:

Mol	Chain	Res	Type	Atoms	Z	Observed(°)	Ideal(°)
1	A	297	ASP	CB-CG-OD2	7.31	124.88	118.30
1	A	275	ASP	CB-CG-OD1	7.11	124.70	118.30
1	B	214	ASP	CB-CG-OD2	6.97	124.57	118.30
1	B	242	PRO	CA-N-CD	-6.67	102.17	111.50
1	B	239	ASP	CB-CA-C	5.96	122.31	110.40
1	B	319	ASP	CB-CG-OD2	5.73	123.46	118.30
1	A	359	ASP	CB-CG-OD2	5.72	123.45	118.30
1	B	12	ASP	CB-CG-OD2	5.63	123.37	118.30
1	B	91	ASP	CB-CG-OD2	5.62	123.36	118.30
1	B	297	ASP	CB-CG-OD2	5.61	123.34	118.30
1	B	246	ASP	CB-CG-OD2	5.58	123.32	118.30
1	A	196	VAL	CB-CA-C	-5.56	100.84	111.40
1	B	416	ASP	CB-CG-OD2	5.52	123.27	118.30
1	A	202	ASP	CB-CG-OD2	5.44	123.20	118.30
1	B	73	ASP	CB-CG-OD2	5.28	123.06	118.30
1	B	275	ASP	CB-CG-OD2	5.24	123.01	118.30
1	A	103	ASP	CB-CG-OD2	5.20	122.98	118.30
1	B	315	ASP	CB-CG-OD2	5.19	122.97	118.30
1	A	214	ASP	CB-CG-OD2	5.18	122.96	118.30
1	A	6	ASP	CB-CG-OD2	5.14	122.93	118.30
1	A	91	ASP	CB-CG-OD2	5.12	122.91	118.30
1	B	303	ASP	CB-CG-OD2	5.08	122.87	118.30

Continued on next page...

Continued from previous page...

Mol	Chain	Res	Type	Atoms	Z	Observed(°)	Ideal(°)
1	B	277	ASP	CB-CG-OD2	5.05	122.85	118.30
1	B	415	ASP	CB-CG-OD2	5.03	122.83	118.30

There are no chirality outliers.

There are no planarity outliers.

5.2 Close contacts ⓘ

In the following table, the Non-H and H(model) columns list the number of non-hydrogen atoms and hydrogen atoms in the chain respectively. The H(added) column lists the number of hydrogens added by MolProbity. The Clashes column lists the number of clashes within the asymmetric unit, and the number in parentheses is this value normalized per 1000 atoms of the molecule in the chain. The Symm-Clashes column gives symmetry related clashes, in the same way as for the Clashes column.

Mol	Chain	Non-H	H(model)	H(added)	Clashes	Symm-Clashes
1	A	3314	0	3254	34	0
1	B	3314	0	3254	41	0
2	A	48	0	32	4	0
2	B	48	0	32	3	0
3	A	260	0	0	6	0
3	B	193	0	0	6	0
All	All	7177	0	6572	72	0

Clashscore is defined as the number of clashes calculated for the entry per 1000 atoms (including hydrogens) of the entry. The overall clashscore for this entry is 5.

All (72) close contacts within the same asymmetric unit are listed below.

Atom-1	Atom-2	Distance(Å)	Clash(Å)
1:B:169:GLU:OE1	2:B:1429:COA:S1P	2.29	0.90
1:A:319:ASP:OD1	3:A:536:HOH:O	1.94	0.85
1:A:169:GLU:OE1	2:A:429:COA:S1P	2.36	0.82
1:B:11:LEU:HD11	1:B:36:ILE:HD11	1.61	0.81
1:B:329:ALA:O	3:B:1588:HOH:O	1.99	0.80
1:B:239:ASP:O	1:B:241:ASN:N	2.23	0.71
1:A:297:ASP:OD2	3:A:468:HOH:O	2.07	0.71
1:A:95:GLU:OE1	1:A:96:ASN:O	2.08	0.70
1:B:32:ASN:HD21	1:B:68:ARG:HH21	1.43	0.66
1:B:13:PHE:CZ	1:B:83:LEU:HD21	2.30	0.66
1:A:219:GLU:OE2	1:B:358:HIS:HE1	1.79	0.66
1:B:237:ASP:OD1	1:B:239:ASP:O	2.16	0.64

Continued on next page...

Continued from previous page...

Atom-1	Atom-2	Distance(Å)	Clash(Å)
1:A:11:LEU:HD11	1:A:86:MET:HB3	1.81	0.63
1:B:102:LEU:HD22	1:B:107:PHE:HB2	1.81	0.63
1:A:17:GLN:HG3	1:A:63:PHE:CE2	2.34	0.61
1:B:246:ASP:O	1:B:247:ASN:OD1	2.21	0.59
1:B:76:THR:HG22	1:B:79:GLY:H	1.67	0.58
1:A:32:ASN:HD21	1:A:68:ARG:HH21	1.52	0.58
1:B:233:ASN:ND2	1:B:242:PRO:HG3	2.20	0.57
1:A:167:LEU:HD21	1:B:167:LEU:HD21	1.86	0.57
1:A:351:MET:HB3	1:A:356:LEU:HD13	1.87	0.56
1:B:17:GLN:HG3	1:B:63:PHE:CE2	2.40	0.56
1:A:294:ASP:O	3:A:468:HOH:O	2.17	0.55
2:A:429:COA:H22	2:A:429:COA:CDP	2.36	0.55
1:B:284:ILE:HG23	1:B:292:ILE:HD13	1.90	0.54
1:B:233:ASN:HD22	1:B:242:PRO:HG3	1.75	0.52
1:A:139:TYR:HD1	3:A:472:HOH:O	1.91	0.52
1:B:231:GLN:OE1	1:B:314:VAL:O	2.28	0.52
1:A:326:THR:CG2	3:A:632:HOH:O	2.58	0.52
1:A:298:LYS:NZ	3:A:675:HOH:O	2.43	0.51
1:B:16:VAL:HB	2:B:1429:COA:S1P	2.51	0.51
1:A:375:ILE:HD13	1:A:400:LEU:HD11	1.93	0.51
1:B:3:LYS:HB2	1:B:6:ASP:OD1	2.13	0.49
2:A:429:COA:H22	2:A:429:COA:H131	1.94	0.48
1:B:39:ARG:NH2	1:B:426:GLN:HG3	2.29	0.48
1:A:53:PRO:O	1:A:54:ASN:HB3	2.14	0.47
1:B:18:ALA:H	2:B:1429:COA:HS1	1.61	0.47
1:A:262:GLN:HE21	1:A:285:ALA:HA	1.80	0.47
1:A:167:LEU:O	1:A:171:ASN:HB3	2.14	0.47
1:A:15:HIS:HD2	1:A:44:MET:SD	2.38	0.46
1:B:124:VAL:HG23	1:B:176:LEU:HD22	1.98	0.46
1:B:15:HIS:CE1	1:B:97:PHE:CD2	3.04	0.45
1:A:63:PHE:CZ	1:B:209:ARG:HD2	2.51	0.45
1:A:209:ARG:HD2	1:B:63:PHE:CZ	2.51	0.45
1:A:323:PHE:O	1:A:326:THR:HB	2.17	0.44
1:B:210:ILE:O	1:B:213:ARG:HB3	2.17	0.44
1:A:15:HIS:HD1	1:A:15:HIS:H	1.64	0.44
1:B:409:LEU:HD11	1:B:428:VAL:HG21	2.00	0.44
1:B:167:LEU:O	1:B:171:ASN:HB3	2.17	0.44
1:A:142:VAL:HG23	3:B:1574:HOH:O	2.18	0.44
1:A:45:THR:O	1:A:57:SER:OG	2.30	0.44
1:B:13:PHE:HZ	1:B:83:LEU:HD21	1.81	0.44
1:B:234:PHE:CD2	1:B:318:MET:HG3	2.53	0.44
1:B:52:LYS:NZ	3:B:1554:HOH:O	2.51	0.44

Continued on next page...

Continued from previous page...

Atom-1	Atom-2	Distance(Å)	Clash(Å)
1:A:16:VAL:HB	2:A:429:COA:S1P	2.58	0.43
1:A:36:ILE:HG12	1:A:70:ILE:HD11	1.99	0.43
1:B:289:TRP:N	1:B:290:PRO:CD	2.81	0.43
1:B:52:LYS:NZ	3:B:1538:HOH:O	2.52	0.43
1:B:15:HIS:CD2	1:B:16:VAL:HG23	2.54	0.43
1:A:281:TYR:O	1:A:347:CYS:HA	2.19	0.42
1:B:3:LYS:HB2	1:B:6:ASP:CG	2.40	0.42
1:A:70:ILE:HG22	1:A:405:THR:HA	2.00	0.42
1:A:126:GLY:HA3	1:A:138:VAL:HG13	2.01	0.42
1:B:329:ALA:HA	3:B:1486:HOH:O	2.20	0.42
1:A:129:GLU:HG3	1:A:134:GLU:OE2	2.20	0.41
1:B:76:THR:HG22	1:B:79:GLY:N	2.34	0.41
1:A:209:ARG:HD2	1:B:63:PHE:CE2	2.55	0.41
1:B:32:ASN:ND2	3:B:1495:HOH:O	2.54	0.41
1:B:72:LEU:CD2	1:B:83:LEU:HD12	2.51	0.40
1:A:122:ALA:HA	1:A:196:VAL:O	2.20	0.40
1:B:206:ASN:ND2	1:B:209:ARG:HH21	2.19	0.40
1:A:83:LEU:HA	1:A:83:LEU:HD23	1.92	0.40

There are no symmetry-related clashes.

5.3 Torsion angles

5.3.1 Protein backbone ⓘ

In the following table, the Percentiles column shows the percent Ramachandran outliers of the chain as a percentile score with respect to all X-ray entries followed by that with respect to entries of similar resolution. The Analysed column shows the number of residues for which the backbone conformation was analysed, and the total number of residues.

Mol	Chain	Analysed	Favoured	Allowed	Outliers	Percentiles	
1	A	425/427 (100%)	411 (97%)	12 (3%)	2 (0%)	38	33
1	B	425/427 (100%)	403 (95%)	17 (4%)	5 (1%)	19	11
All	All	850/854 (100%)	814 (96%)	29 (3%)	7 (1%)	27	20

All (7) Ramachandran outliers are listed below:

Mol	Chain	Res	Type
1	B	140	GLU
1	B	240	GLY

Continued on next page...

Continued from previous page...

Mol	Chain	Res	Type
1	A	16	VAL
1	B	313	ARG
1	A	97	PHE
1	B	16	VAL
1	B	333	LYS

5.3.2 Protein sidechains ⓘ

In the following table, the Percentiles column shows the percent sidechain outliers of the chain as a percentile score with respect to all X-ray entries followed by that with respect to entries of similar resolution. The Analysed column shows the number of residues for which the sidechain conformation was analysed, and the total number of residues.

Mol	Chain	Analysed	Rotameric	Outliers	Percentiles	
1	A	350/350 (100%)	328 (94%)	22 (6%)	25	21
1	B	350/350 (100%)	324 (93%)	26 (7%)	20	15
All	All	700/700 (100%)	652 (93%)	48 (7%)	22	17

All (48) residues with a non-rotameric sidechain are listed below:

Mol	Chain	Res	Type
1	A	15	HIS
1	A	32	ASN
1	A	41	SER
1	A	44	MET
1	A	59	TYR
1	A	74	MET
1	A	81	GLU
1	A	82	LEU
1	A	92	VAL
1	A	93	MET
1	A	96	ASN
1	A	102	LEU
1	A	103	ASP
1	A	137	LYS
1	A	196	VAL
1	A	205	LEU
1	A	274	THR
1	A	326	THR
1	A	356	LEU
1	A	386	PHE

Continued on next page...

Continued from previous page...

Mol	Chain	Res	Type
1	A	391	PHE
1	A	426	GLN
1	B	59	TYR
1	B	76	THR
1	B	83	LEU
1	B	92	VAL
1	B	102	LEU
1	B	123	SER
1	B	196	VAL
1	B	205	LEU
1	B	210	ILE
1	B	242	PRO
1	B	247	ASN
1	B	282	PHE
1	B	291	GLN
1	B	296	ILE
1	B	297	ASP
1	B	317	LEU
1	B	322	SER
1	B	326	THR
1	B	327	LYS
1	B	364	LYS
1	B	370	GLU
1	B	386	PHE
1	B	391	PHE
1	B	396	THR
1	B	426	GLN
1	B	428	VAL

Some sidechains can be flipped to improve hydrogen bonding and reduce clashes. All (13) such sidechains are listed below:

Mol	Chain	Res	Type
1	A	32	ASN
1	A	262	GLN
1	B	15	HIS
1	B	17	GLN
1	B	32	ASN
1	B	85	GLN
1	B	188	HIS
1	B	206	ASN
1	B	233	ASN
1	B	247	ASN

Continued on next page...

Continued from previous page...

Mol	Chain	Res	Type
1	B	262	GLN
1	B	358	HIS
1	B	378	ASN

5.3.3 RNA ⓘ

There are no RNA chains in this entry.

5.4 Non-standard residues in protein, DNA, RNA chains ⓘ

There are no non-standard protein/DNA/RNA residues in this entry.

5.5 Carbohydrates ⓘ

There are no carbohydrates in this entry.

5.6 Ligand geometry ⓘ

2 ligands are modelled in this entry.

In the following table, the Counts columns list the number of bonds (or angles) for which Mogul statistics could be retrieved, the number of bonds (or angles) that are observed in the model and the number of bonds (or angles) that are defined in the chemical component dictionary. The Link column lists molecule types, if any, to which the group is linked. The Z score for a bond length (or angle) is the number of standard deviations the observed value is removed from the expected value. A bond length (or angle) with $|Z| > 2$ is considered an outlier worth inspection. RMSZ is the root-mean-square of all Z scores of the bond lengths (or angles).

Mol	Type	Chain	Res	Link	Bond lengths			Bond angles		
					Counts	RMSZ	# Z > 2	Counts	RMSZ	# Z > 2
2	COA	A	429	-	50,50,50	1.60	3 (6%)	75,75,75	1.69	9 (12%)
2	COA	B	1429	-	50,50,50	1.51	4 (8%)	75,75,75	1.75	7 (9%)

In the following table, the Chirals column lists the number of chiral outliers, the number of chiral centers analysed, the number of these observed in the model and the number defined in the chemical component dictionary. Similar counts are reported in the Torsion and Rings columns. '-' means no outliers of that kind were identified.

Mol	Type	Chain	Res	Link	Chirals	Torsions	Rings
2	COA	A	429	-	-	0/48/64/64	0/1/3/3

Continued on next page...

Continued from previous page...

Mol	Type	Chain	Res	Link	Chirals	Torsions	Rings
2	COA	B	1429	-	-	0/48/64/64	0/1/3/3

All (7) bond length outliers are listed below:

Mol	Chain	Res	Type	Atoms	Z	Observed(Å)	Ideal(Å)
2	A	429	COA	O9P-C9P	9.29	1.41	1.23
2	B	1429	COA	O9P-C9P	8.87	1.41	1.23
2	A	429	COA	C2A-N3A	3.84	1.39	1.32
2	B	1429	COA	C2A-N3A	3.08	1.38	1.32
2	A	429	COA	C2A-N1A	2.69	1.39	1.33
2	B	1429	COA	C2A-N1A	2.39	1.38	1.33
2	B	1429	COA	C3P-N4P	-2.10	1.41	1.46

All (16) bond angle outliers are listed below:

Mol	Chain	Res	Type	Atoms	Z	Observed(°)	Ideal(°)
2	B	1429	COA	N3A-C2A-N1A	-10.61	119.84	128.71
2	A	429	COA	N3A-C2A-N1A	-10.23	120.16	128.71
2	B	1429	COA	O4B-C1B-N9A	5.09	113.18	108.44
2	A	429	COA	N3A-C4A-N9A	4.31	133.21	125.43
2	A	429	COA	O4B-C1B-N9A	3.95	112.11	108.44
2	B	1429	COA	N3A-C4A-N9A	3.77	132.23	125.43
2	A	429	COA	P2A-O3A-P1A	-3.16	122.41	131.68
2	A	429	COA	C5A-C4A-N3A	-2.77	119.66	125.70
2	B	1429	COA	C6P-C5P-N4P	-2.46	112.04	116.50
2	A	429	COA	C2A-N3A-C4A	2.37	120.76	114.01
2	A	429	COA	CEP-CBP-CAP	2.17	112.58	108.82
2	A	429	COA	O4B-C1B-C2B	-2.15	103.47	106.77
2	B	1429	COA	C5A-C4A-N3A	-2.14	121.04	125.70
2	B	1429	COA	P3B-O3B-C3B	2.12	126.43	121.96
2	B	1429	COA	C2A-N3A-C4A	2.06	119.86	114.01
2	A	429	COA	C4A-C5A-N7A	-2.05	107.76	109.52

There are no chirality outliers.

There are no torsion outliers.

There are no ring outliers.

5.7 Other polymers ⓘ

There are no such residues in this entry.

5.8 Polymer linkage issues

There are no chain breaks in this entry.

6 Fit of model and data ⓘ

6.1 Protein, DNA and RNA chains ⓘ

In the following table, the column labelled ‘#RSRZ> 2’ contains the number (and percentage) of RSRZ outliers, followed by percent RSRZ outliers for the chain as percentile scores relative to all X-ray entries and entries of similar resolution. The OWAB column contains the minimum, median, 95th percentile and maximum values of the occupancy-weighted average B-factor per residue. The column labelled ‘Q< 0.9’ lists the number of (and percentage) of residues with an average occupancy less than 0.9.

Mol	Chain	Analysed	<RSRZ>	#RSRZ>2		OWAB(Å ²)	Q<0.9
1	A	427/427 (100%)	0.06	27 (6%)	19 22	23, 34, 70, 74	16 (3%)
1	B	426/427 (99%)	0.67	71 (16%)	2 2	26, 38, 97, 111	33 (7%)
All	All	853/854 (99%)	0.36	98 (11%)	5 6	23, 36, 77, 111	49 (5%)

All (98) RSRZ outliers are listed below:

Mol	Chain	Res	Type	RSRZ
1	B	302	LYS	13.6
1	B	296	ILE	10.6
1	A	428	VAL	10.0
1	B	295	MET	9.4
1	B	320	ILE	9.2
1	B	305	PRO	8.9
1	B	323	PHE	8.3
1	B	314	VAL	8.1
1	B	301	TRP	8.1
1	B	317	LEU	7.5
1	B	309	THR	7.4
1	B	292	ILE	7.4
1	A	427	VAL	7.3
1	B	293	CYS	7.2
1	B	303	ASP	7.1
1	B	298	LYS	6.1
1	B	310	PHE	6.0
1	B	286	ALA	5.7
1	B	343	TYR	5.6
1	B	315	ASP	5.4
1	A	2	THR	5.2
1	B	289	TRP	5.1
1	B	311	GLU	5.1
1	A	97	PHE	5.1

Continued on next page...

Continued from previous page...

Mol	Chain	Res	Type	RSRZ
1	A	413	GLY	5.0
1	B	330	ASP	4.8
1	B	307	TYR	4.8
1	A	99	PRO	4.8
1	B	233	ASN	4.6
1	B	299	PRO	4.5
1	B	342	GLN	4.5
1	B	297	ASP	4.4
1	B	282	PHE	4.1
1	B	284	ILE	4.0
1	A	423	HIS	4.0
1	A	422	LEU	3.8
1	B	316	LYS	3.8
1	B	313	ARG	3.8
1	A	41	SER	3.7
1	B	285	ALA	3.7
1	B	341	ALA	3.6
1	B	417	ALA	3.6
1	B	234	PHE	3.5
1	B	326	THR	3.4
1	B	239	ASP	3.4
1	A	135	HIS	3.3
1	B	287	ASN	3.3
1	B	288	MET	3.3
1	A	426	GLN	3.2
1	B	290	PRO	3.2
1	B	347	CYS	3.2
1	B	344	GLY	3.2
1	B	345	ILE	3.2
1	B	110	GLU	3.2
1	A	420	LYS	3.1
1	B	189	LYS	3.1
1	B	327	LYS	3.1
1	A	425	LYS	3.0
1	B	306	ALA	3.0
1	A	77	PRO	3.0
1	B	304	ASP	2.9
1	B	77	PRO	2.9
1	B	346	PRO	2.9
1	B	339	TRP	2.9
1	B	247	ASN	2.9
1	B	321	PHE	2.9

Continued on next page...

Continued from previous page...

Mol	Chain	Res	Type	RSRZ
1	B	338	GLU	2.9
1	B	2	THR	2.8
1	A	410	LYS	2.8
1	B	426	GLN	2.8
1	A	100	GLY	2.8
1	B	238	ARG	2.8
1	A	54	ASN	2.7
1	B	241	ASN	2.7
1	B	294	ASP	2.7
1	A	421	GLU	2.7
1	B	308	ASN	2.7
1	A	108	THR	2.6
1	B	274	THR	2.6
1	B	246	ASP	2.6
1	B	318	MET	2.6
1	B	415	ASP	2.5
1	B	413	GLY	2.5
1	A	38	ARG	2.5
1	B	291	GLN	2.5
1	A	419	ILE	2.5
1	A	48	TRP	2.5
1	A	412	LEU	2.4
1	B	242	PRO	2.4
1	B	322	SER	2.2
1	A	106	GLY	2.2
1	B	263	PRO	2.2
1	A	414	LEU	2.2
1	B	324	ILE	2.1
1	A	111	TYR	2.1
1	A	98	GLY	2.1
1	B	412	LEU	2.1
1	B	237	ASP	2.0

6.2 Non-standard residues in protein, DNA, RNA chains ⓘ

There are no non-standard protein/DNA/RNA residues in this entry.

6.3 Carbohydrates ⓘ

There are no carbohydrates in this entry.

6.4 Ligands

In the following table, the Atoms column lists the number of modelled atoms in the group and the number defined in the chemical component dictionary. LLDF column lists the quality of electron density of the group with respect to its neighbouring residues in protein, DNA or RNA chains. The B-factors column lists the minimum, median, 95th percentile and maximum values of B factors of atoms in the group. The column labelled 'Q< 0.9' lists the number of atoms with occupancy less than 0.9.

Mol	Type	Chain	Res	Atoms	RSR	LLDF	B-factors(Å ²)	Q<0.9
2	COA	A	429	48/48	0.34	1.50	60,79,85,86	1
2	COA	B	1429	48/48	0.16	1.07	44,50,55,56	1

6.5 Other polymers

There are no such residues in this entry.