



# wwPDB X-ray Structure Validation Summary Report

Feb 27, 2014 – 12:05 AM GMT

PDB ID : 2VHL  
Title : THE THREE-DIMENSIONAL STRUCTURE OF THE N-ACETYLGLUCOSAMINE-6-PHOSPHATE DEACETYLASE FROM BACILLUS SUBTILIS  
Authors : Vincent, F.; Yates, D.; Garman, E.; Davies, G.J.  
Deposited on : 2007-11-22  
Resolution : 2.05 Å (reported)

This is a wwPDB validation summary report for a publicly released PDB entry.

We welcome your comments at [validation@mail.wwpdb.org](mailto:validation@mail.wwpdb.org)

A user guide is available at <http://wwpdb.org/ValidationPDFNotes.html>

---

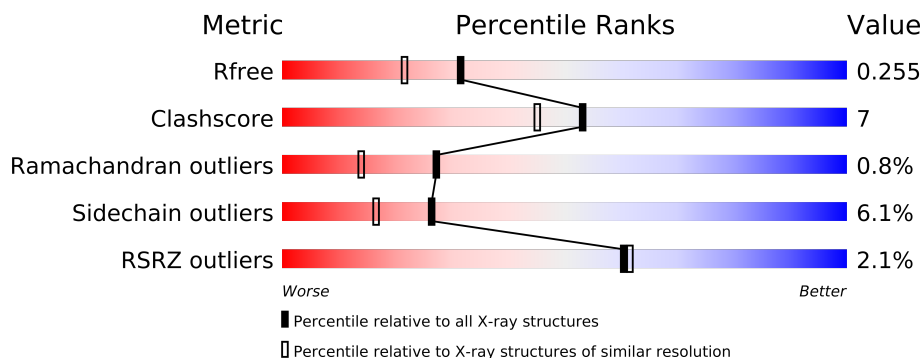
The following versions of software and data (see [references](#)) were used in the production of this report:

MolProbity	:	4.02b-467
Mogul	:	1.15 2013
Xtriage (Phenix)	:	dev-1323
EDS	:	stable22639
Percentile statistics	:	21963
Refmac	:	5.8.0049
CCP4	:	6.3.0 (Settle)
Ideal geometry (proteins)	:	Engh & Huber (2001)
Ideal geometry (DNA, RNA)	:	Parkinson et. al. (1996)
Validation Pipeline (wwPDB-VP)	:	stable22683

# 1 Overall quality at a glance

The reported resolution of this entry is 2.05 Å.

Percentile scores (ranging between 0-100) for global validation metrics of the entry are shown in the following graphic. The table shows the number of entries on which the scores are based.



Metric	Whole archive (#Entries)	Similar resolution (#Entries, resolution range(Å))
$R_{free}$	66092	1380 (2.06-2.02)
Clashscore	79885	1577 (2.06-2.02)
Ramachandran outliers	78287	1565 (2.06-2.02)
Sidechain outliers	78261	1565 (2.06-2.02)
RSRZ outliers	66119	1381 (2.06-2.02)

The table below summarises the geometric issues observed across the polymeric chains and their fit to the electron density. The red, orange, yellow and green segments on the lower bar indicate the fraction of residues that contain outliers for  $\geq 3$ , 2, 1 and 0 types of geometric quality criteria. The upper red bar (where present) indicates the fraction of residues that have poor fit to the electron density.

Mol	Chain	Length	Quality of chain
1	A	396	
1	B	396	

## 2 Entry composition i

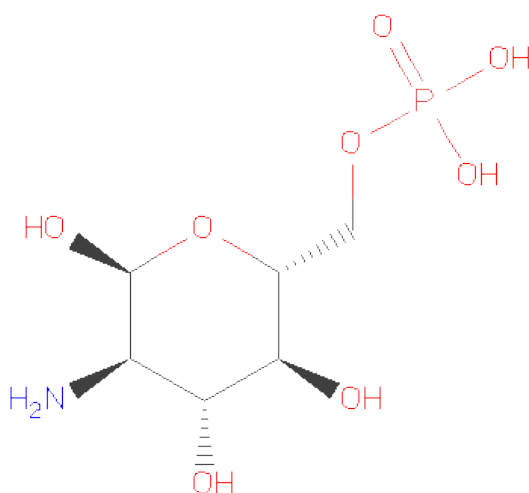
There are 5 unique types of molecules in this entry. The entry contains 6615 atoms, of which 0 are hydrogen and 0 are deuterium.

In the tables below, the ZeroOcc column contains the number of atoms modelled with zero occupancy, the AltConf column contains the number of residues with at least one atom in alternate conformation and the Trace column contains the number of residues modelled with at most 2 atoms.

- Molecule 1 is a protein called N-ACETYLGLUCOSAMINE-6-PHOSPHATEDEACETYLASE.

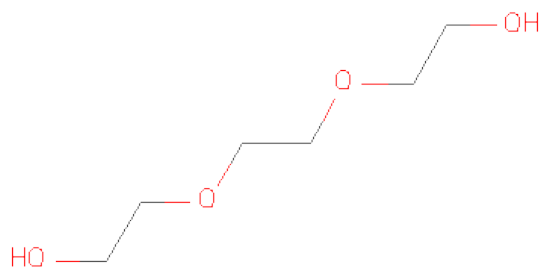
Mol	Chain	Residues	Atoms					ZeroOcc	AltConf	Trace
1	A	392	Total	C	N	O	S	0	1	0
			2966	1860	512	582	12			
1	B	393	Total	C	N	O	S	0	0	0
			2968	1862	512	582	12			

- Molecule 2 is SUGAR (GLUCOSAMINE 6-PHOSPHATE) (three-letter code: GLP) (formula: C<sub>6</sub>H<sub>14</sub>NO<sub>8</sub>P).



Mol	Chain	Residues	Atoms					ZeroOcc	AltConf
2	A	1	Total	C	N	O	P	0	0
			16	6	1	8	1		
2	B	1	Total	C	N	O	P	0	0
			16	6	1	8	1		

- Molecule 3 is TRIETHYLENE GLYCOL (three-letter code: PGE) (formula: C<sub>6</sub>H<sub>14</sub>O<sub>4</sub>).



Mol	Chain	Residues	Atoms			ZeroOcc	AltConf
3	A	1	Total	C	O	0	0
			10	6	4		
3	B	1	Total	C	O	0	0
			10	6	4		

- Molecule 4 is FE (III) ION (three-letter code: FE) (formula: Fe).

Mol	Chain	Residues	Atoms		ZeroOcc	AltConf
4	B	2	Total	Fe	0	0
			2	2		
4	A	2	Total	Fe	0	0
			2	2		

- Molecule 5 is water.

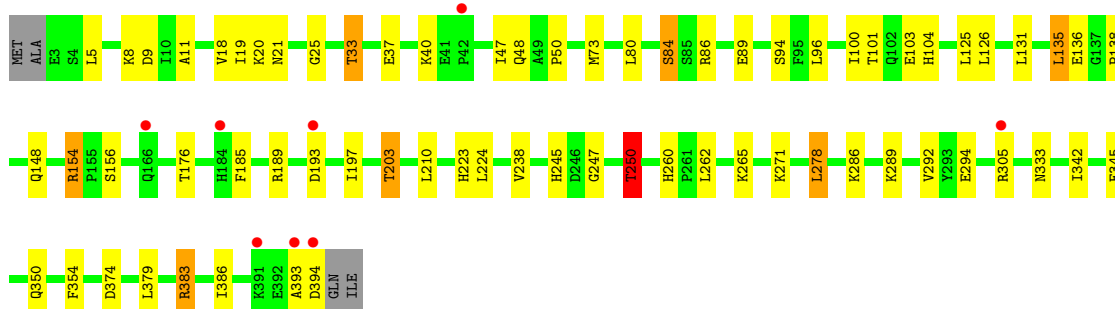
Mol	Chain	Residues	Atoms		ZeroOcc	AltConf
5	A	318	Total	O	0	4
			322	322		
5	B	302	Total	O	0	1
			303	303		

### 3 Residue-property plots

These plots are drawn for all protein, RNA and DNA chains in the entry. The first graphic for a chain summarises the proportions of errors displayed in the second graphic. The second graphic shows the sequence view annotated by issues in geometry and electron density. Residues are color-coded according to the number of geometric quality criteria for which they contain at least one outlier: green = 0, yellow = 1, orange = 2 and red = 3 or more. A red dot above a residue indicates a poor fit to the electron density ( $RSRZ > 2$ ). Stretches of 2 or more consecutive residues without any outlier are shown as a green connector. Residues present in the sample, but not in the model, are shown in grey.

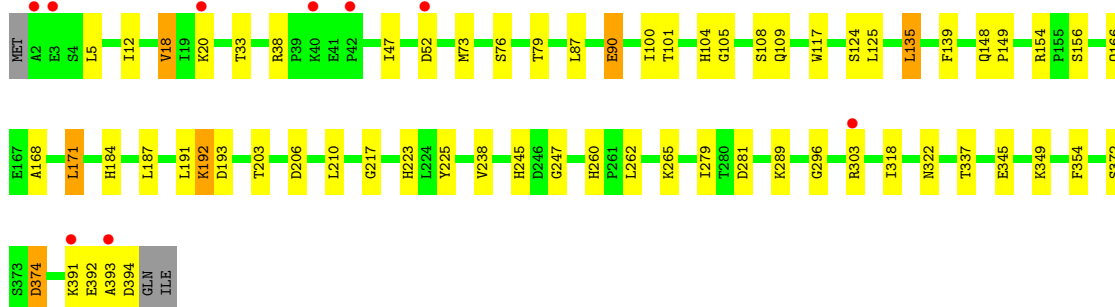
#### • Molecule 1: N-ACETYLGLUCOSAMINE-6-PHOSPHATEDEACETYLASE

Chain A: 



#### • Molecule 1: N-ACETYLGLUCOSAMINE-6-PHOSPHATEDEACETYLASE

Chain B: 



## 4 Data and refinement statistics

Property	Value	Source
Space group	P 21 21 2	Depositor
Cell constants a, b, c, $\alpha$ , $\beta$ , $\gamma$	51.68Å 107.74Å 188.25Å 90.00° 90.00° 90.00°	Depositor
Resolution (Å)	21.84 – 2.05 21.81 – 2.05	Depositor EDS
% Data completeness (in resolution range)	97.7 (21.84-2.05) 97.7 (21.81-2.05)	Depositor EDS
$R_{merge}$	0.09	Depositor
$R_{sym}$	(Not available)	Depositor
$\langle I/\sigma(I) \rangle$ <sup>1</sup>	2.02 (at 2.06Å)	Xtriage
Refinement program	REFMAC 5.2.0019	Depositor
R, $R_{free}$	0.205 , 0.260 0.204 , 0.255	Depositor DCC
$R_{free}$ test set	3328 reflections (5.36%)	DCC
Wilson B-factor (Å <sup>2</sup> )	25.4	Xtriage
Anisotropy	0.155	Xtriage
Bulk solvent $k_{sol}$ (e/Å <sup>3</sup> ), $B_{sol}$ (Å <sup>2</sup> )	0.37 , 40.3	EDS
Estimated twinning fraction	No twinning to report.	Xtriage
L-test for twinning	$\langle  L  \rangle = 0.48$ , $\langle L^2 \rangle = 0.31$	Xtriage
Outliers	0 of 65440 reflections	Xtriage
$F_o, F_c$ correlation	0.95	EDS
Total number of atoms	6615	wwPDB-VP
Average B, all atoms (Å <sup>2</sup> )	27.0	wwPDB-VP

Xtriage's analysis on translational NCS is as follows: *The analyses of the Patterson function reveals a significant off-origin peak that is 86.15 % of the origin peak, indicating pseudo translational symmetry. The chance of finding a peak of this or larger height randomly in a structure without pseudo translational symmetry is equal to 1.0230e-07. The detected translational NCS is most likely also responsible for the elevated intensity ratio.*

<sup>1</sup>Intensities estimated from amplitudes.

## 5 Model quality

### 5.1 Standard geometry

Bond lengths and bond angles in the following residue types are not validated in this section: GLP, PGE, FE

The Z score for a bond length (or angle) is the number of standard deviations the observed value is removed from the expected value. A bond length (or angle) with  $|Z| > 5$  is considered an outlier worth inspection. RMSZ is the root-mean-square of all Z scores of the bond lengths (or angles).

Mol	Chain	Bond lengths		Bond angles	
		RMSZ	$\# Z  > 5$	RMSZ	$\# Z  > 5$
1	A	0.79	0/3023	0.83	3/4089 (0.1%)
1	B	0.77	1/3020 (0.0%)	0.79	2/4085 (0.0%)
All	All	0.78	1/6043 (0.0%)	0.81	5/8174 (0.1%)

Chiral center outliers are detected by calculating the chiral volume of a chiral center and verifying if the center is modelled as a planar moiety or with the opposite hand. A planarity outlier is detected by checking planarity of atoms in a peptide group, atoms in a mainchain group or atoms of a sidechain that are expected to be planar.

Mol	Chain	#Chirality outliers	#Planarity outliers
1	B	0	1

All (1) bond length outliers are listed below:

Mol	Chain	Res	Type	Atoms	Z	Observed(Å)	Ideal(Å)
1	B	90	GLU	CB-CG	-5.26	1.42	1.52

All (5) bond angle outliers are listed below:

Mol	Chain	Res	Type	Atoms	Z	Observed(°)	Ideal(°)
1	A	383	ARG	NE-CZ-NH2	-7.49	116.56	120.30
1	B	206	ASP	CB-CG-OD1	6.20	123.88	118.30
1	A	250	THR	N-CA-CB	-6.17	98.57	110.30
1	A	135	LEU	CA-CB-CG	6.01	129.13	115.30
1	B	135	LEU	CA-CB-CG	6.00	129.10	115.30

There are no chirality outliers.

All (1) planarity outliers are listed below:

Mol	Chain	Res	Type	Group
1	B	393	ALA	Peptide

## 5.2 Close contacts ⓘ

In the following table, the Non-H and H(model) columns list the number of non-hydrogen atoms and hydrogen atoms in the chain respectively. The H(added) column lists the number of hydrogens added by MolProbity. The Clashes column lists the number of clashes within the asymmetric unit, and the number in parentheses is this value normalized per 1000 atoms of the molecule in the chain. The Symm-Clashes column gives symmetry related clashes, in the same way as for the Clashes column.

Mol	Chain	Non-H	H(model)	H(added)	Clashes	Symm-Clashes
1	A	2966	0	2956	45	0
1	B	2968	0	2959	39	0
2	A	16	0	12	0	0
2	B	16	0	12	0	0
3	A	10	0	14	4	0
3	B	10	0	14	2	0
4	A	2	0	0	0	0
4	B	2	0	0	0	0
5	A	322	0	0	7	0
5	B	303	0	0	7	0
All	All	6615	0	5967	84	0

Clashscore is defined as the number of clashes calculated for the entry per 1000 atoms (including hydrogens) of the entry. The overall clashscore for this entry is 7.

The worst 5 of 84 close contacts within the same asymmetric unit are listed below.

Atom-1	Atom-2	Distance(Å)	Clash(Å)
1:A:154:ARG:HG3	1:A:154:ARG:HH11	1.28	0.98
1:A:260:HIS:HD2	1:A:262:LEU:H	1.26	0.84
1:A:80:LEU:O	1:A:84:SER:HB2	1.80	0.81
1:A:383:ARG:HD2	5:A:2089:HOH:O	1.80	0.80
1:A:245:HIS:HD2	1:A:247:GLY:H	1.27	0.79

There are no symmetry-related clashes.



## 5.3 Torsion angles

### 5.3.1 Protein backbone ⓘ

In the following table, the Percentiles column shows the percent Ramachandran outliers of the chain as a percentile score with respect to all X-ray entries followed by that with respect to entries of similar resolution. The Analysed column shows the number of residues for which the backbone conformation was analysed, and the total number of residues.

Mol	Chain	Analysed	Favoured	Allowed	Outliers	Percentiles	
1	A	391/396 (99%)	375 (96%)	14 (4%)	2 (0%)	38	25
1	B	391/396 (99%)	369 (94%)	18 (5%)	4 (1%)	22	9
All	All	782/792 (99%)	744 (95%)	32 (4%)	6 (1%)	27	14

5 of 6 Ramachandran outliers are listed below:

Mol	Chain	Res	Type
1	B	223	HIS
1	B	391	LYS
1	B	392	GLU
1	A	223	HIS
1	B	225	TYR

### 5.3.2 Protein sidechains ⓘ

In the following table, the Percentiles column shows the percent sidechain outliers of the chain as a percentile score with respect to all X-ray entries followed by that with respect to entries of similar resolution. The Analysed column shows the number of residues for which the sidechain conformation was analysed, and the total number of residues.

Mol	Chain	Analysed	Rotameric	Outliers	Percentiles	
1	A	319/321 (99%)	297 (93%)	22 (7%)	22	13
1	B	318/321 (99%)	301 (95%)	17 (5%)	32	21
All	All	637/642 (99%)	598 (94%)	39 (6%)	26	16

5 of 39 residues with a non-rotameric sidechain are listed below:

Mol	Chain	Res	Type
1	A	289	LYS
1	A	379	LEU
1	B	337	THR
1	A	292	VAL

*Continued on next page...*

*Continued from previous page...*

Mol	Chain	Res	Type
1	A	294	GLU

Some sidechains can be flipped to improve hydrogen bonding and reduce clashes. 5 of 17 such sidechains are listed below:

Mol	Chain	Res	Type
1	A	260	HIS
1	A	341	ASN
1	B	260	HIS
1	A	245	HIS
1	B	322	ASN

### 5.3.3 RNA ⓘ

There are no RNA chains in this entry.

## 5.4 Non-standard residues in protein, DNA, RNA chains ⓘ

There are no non-standard protein/DNA/RNA residues in this entry.

## 5.5 Carbohydrates ⓘ

There are no carbohydrates in this entry.

## 5.6 Ligand geometry ⓘ

Of 8 ligands modelled in this entry, 4 are monoatomic - leaving 4 for Mogul analysis.

In the following table, the Counts columns list the number of bonds (or angles) for which Mogul statistics could be retrieved, the number of bonds (or angles) that are observed in the model and the number of bonds (or angles) that are defined in the chemical component dictionary. The Link column lists molecule types, if any, to which the group is linked. The Z score for a bond length (or angle) is the number of standard deviations the observed value is removed from the expected value. A bond length (or angle) with  $|Z| > 2$  is considered an outlier worth inspection. RMSZ is the root-mean-square of all Z scores of the bond lengths (or angles).

Mol	Type	Chain	Res	Link	Bond lengths			Bond angles		
					Counts	RMSZ	$\# Z  > 2$	Counts	RMSZ	$\# Z  > 2$
2	GLP	A	1395	-	16,16,16	1.15	1 (6%)	24,24,24	1.60	3 (12%)
3	PGE	A	1396	-	9,9,9	0.55	0	8,8,8	0.26	0

Mol	Type	Chain	Res	Link	Bond lengths			Bond angles		
					Counts	RMSZ	# Z  > 2	Counts	RMSZ	# Z  > 2
2	GLP	B	1395	-	16,16,16	1.27	2 (12%)	24,24,24	1.30	3 (12%)
3	PGE	B	1396	-	9,9,9	0.48	0	8,8,8	0.41	0

In the following table, the Chirals column lists the number of chiral outliers, the number of chiral centers analysed, the number of these observed in the model and the number defined in the chemical component dictionary. Similar counts are reported in the Torsion and Rings columns. '-' means no outliers of that kind were identified.

Mol	Type	Chain	Res	Link	Chirals	Torsions	Rings
2	GLP	A	1395	-	-	0/6/26/26	0/1/1/1
3	PGE	A	1396	-	-	0/7/7/7	0/0/0/0
2	GLP	B	1395	-	-	0/6/26/26	0/1/1/1
3	PGE	B	1396	-	-	0/7/7/7	0/0/0/0

All (3) bond length outliers are listed below:

Mol	Chain	Res	Type	Atoms	Z	Observed(Å)	Ideal(Å)
2	A	1395	GLP	C1-C2	2.75	1.56	1.53
2	B	1395	GLP	C1-C2	2.53	1.55	1.53
2	B	1395	GLP	P-O1P	2.03	1.58	1.51

The worst 5 of 6 bond angle outliers are listed below:

Mol	Chain	Res	Type	Atoms	Z	Observed(°)	Ideal(°)
2	A	1395	GLP	O5-C5-C6	4.79	116.24	106.61
2	B	1395	GLP	O5-C5-C6	3.57	113.79	106.61
2	A	1395	GLP	O5-C1-C2	-3.48	105.41	109.58
2	A	1395	GLP	O5-C5-C4	-2.82	104.55	109.76
2	B	1395	GLP	C1-C2-C3	2.57	114.18	110.65

There are no chirality outliers.

There are no torsion outliers.

There are no ring outliers.

## 5.7 Other polymers ⓘ

There are no such residues in this entry.

## 5.8 Polymer linkage issues

There are no chain breaks in this entry.

## 6 Fit of model and data

### 6.1 Protein, DNA and RNA chains

In the following table, the column labelled ‘#RSRZ> 2’ contains the number (and percentage) of RSRZ outliers, followed by percent RSRZ outliers for the chain as percentile scores relative to all X-ray entries and entries of similar resolution. The OWAB column contains the minimum, median, 95<sup>th</sup> percentile and maximum values of the occupancy-weighted average B-factor per residue. The column labelled ‘Q< 0.9’ lists the number of (and percentage) of residues with an average occupancy less than 0.9.

Mol	Chain	Analysed	<RSRZ>	#RSRZ>2	OWAB(Å <sup>2</sup> )	Q<0.9
1	A	392/396 (98%)	-0.11	8 (2%) 62 63	11, 24, 43, 71	0
1	B	393/396 (99%)	0.01	9 (2%) 57 58	13, 25, 44, 64	0
All	All	785/792 (99%)	-0.05	17 (2%) 60 60	11, 25, 44, 71	0

The worst 5 of 17 RSRZ outliers are listed below:

Mol	Chain	Res	Type	RSRZ
1	B	2	ALA	5.8
1	B	391	LYS	3.7
1	A	393	ALA	3.5
1	A	394	ASP	3.5
1	B	40	LYS	3.2

### 6.2 Non-standard residues in protein, DNA, RNA chains

There are no non-standard protein/DNA/RNA residues in this entry.

### 6.3 Carbohydrates

There are no carbohydrates in this entry.

### 6.4 Ligands

In the following table, the Atoms column lists the number of modelled atoms in the group and the number defined in the chemical component dictionary. LLDF column lists the quality of electron density of the group with respect to its neighbouring residues in protein, DNA or RNA chains. The B-factors column lists the minimum, median, 95<sup>th</sup> percentile and maximum values of B factors of atoms in the group. The column labelled ‘Q< 0.9’ lists the number of atoms with occupancy less than 0.9.

Mol	Type	Chain	Res	Atoms	RSR	LLDF	B-factors( $\text{\AA}^2$ )	Q<0.9
3	PGE	A	1396	10/10	0.13	0.72	34,45,48,49	0
3	PGE	B	1396	10/10	0.13	0.39	38,49,50,51	0
2	GLP	B	1395	16/16	0.08	-0.26	18,22,28,32	0
2	GLP	A	1395	16/16	0.07	-0.93	16,21,27,29	0
4	FE	B	1397	1/1	0.07	-1.12	24,24,24,24	0
4	FE	A	1398	1/1	0.05	-2.76	23,23,23,23	0
4	FE	A	1397	1/1	0.06	-2.91	18,18,18,18	0
4	FE	B	1398	1/1	0.03	-3.24	20,20,20,20	0

## 6.5 Other polymers ⓘ

There are no such residues in this entry.