



# Full wwPDB X-ray Structure Validation Report

Feb 27, 2014 – 10:44 PM GMT

PDB ID : 2VJH  
Title : THE STRUCTURE OF PHYCOERYTHRIN FROM GLOEOBACTER VIOLACEUS  
Authors : Murray, J.W.; Benson, S.; Nield, J.; Barber, J.  
Deposited on : 2007-12-10  
Resolution : 2.20 Å(reported)

This is a full wwPDB validation report for a publicly released PDB entry.  
We welcome your comments at [validation@mail.wwpdb.org](mailto:validation@mail.wwpdb.org)  
A user guide is available at <http://wwpdb.org/ValidationPDFNotes.html>

---

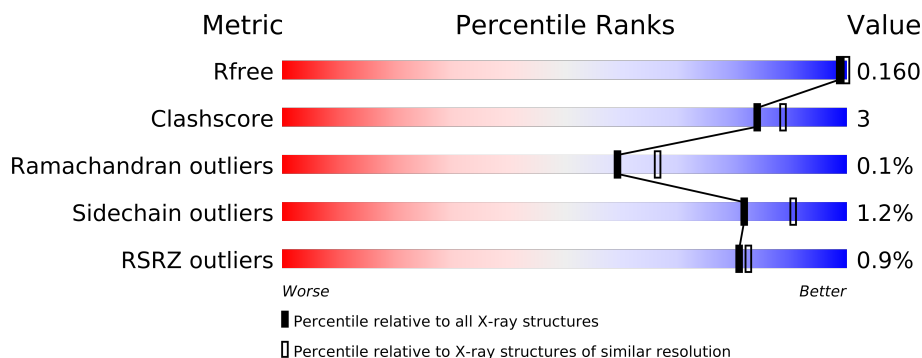
The following versions of software and data (see [references](#)) were used in the production of this report:

MolProbity : 4.02b-467  
Mogul : 1.15 2013  
Xtriage (Phenix) : dev-1323  
EDS : stable22639  
Percentile statistics : 21963  
Refmac : 5.8.0049  
CCP4 : 6.3.0 (Settle)  
Ideal geometry (proteins) : Engh & Huber (2001)  
Ideal geometry (DNA, RNA) : Parkinson et. al. (1996)  
Validation Pipeline (wwPDB-VP) : stable22683

# 1 Overall quality at a glance

The reported resolution of this entry is 2.20 Å.

Percentile scores (ranging between 0-100) for global validation metrics of the entry are shown in the following graphic. The table shows the number of entries on which the scores are based.



Metric	Whole archive (#Entries)	Similar resolution (#Entries, resolution range(Å))
$R_{free}$	66092	2938 (2.20-2.20)
Clashscore	79885	3751 (2.20-2.20)
Ramachandran outliers	78287	3681 (2.20-2.20)
Sidechain outliers	78261	3682 (2.20-2.20)
RSRZ outliers	66119	2939 (2.20-2.20)

The table below summarises the geometric issues observed across the polymeric chains and their fit to the electron density. The red, orange, yellow and green segments on the lower bar indicate the fraction of residues that contain outliers for  $\geq 3$ , 2, 1 and 0 types of geometric quality criteria. The upper red bar (where present) indicates the fraction of residues that have poor fit to the electron density.

Mol	Chain	Length	Quality of chain
1	A	164	
1	C	164	
2	B	177	
2	D	177	

The following table lists non-polymeric compounds that are outliers for geometric or electron-density-fit criteria:

Mol	Type	Chain	Res	Geometry	Electron density
3	PEB	C	1139	-	X

## 2 Entry composition i

There are 5 unique types of molecules in this entry. The entry contains 6116 atoms, of which 0 are hydrogen and 0 are deuterium.

In the tables below, the ZeroOcc column contains the number of atoms modelled with zero occupancy, the AltConf column contains the number of residues with at least one atom in alternate conformation and the Trace column contains the number of residues modelled with at most 2 atoms.

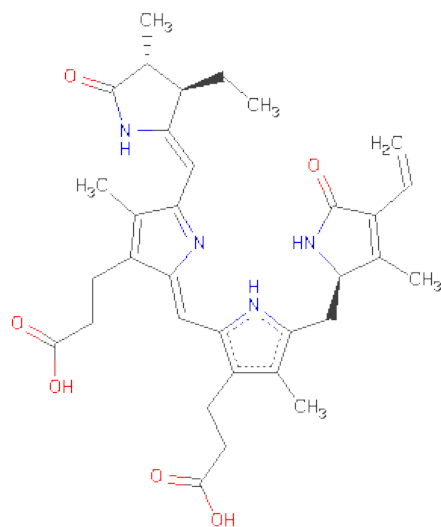
- Molecule 1 is a protein called PHYCOERYTHRIN ALPHA CHAIN.

Mol	Chain	Residues	Atoms					ZeroOcc	AltConf	Trace
1	A	164	Total	C	N	O	S	0	0	0
			1242	781	218	237	6			
1	C	164	Total	C	N	O	S	0	0	0
			1242	781	218	237	6			

- Molecule 2 is a protein called PHYCOERYTHRIN BETA SUBUNIT.

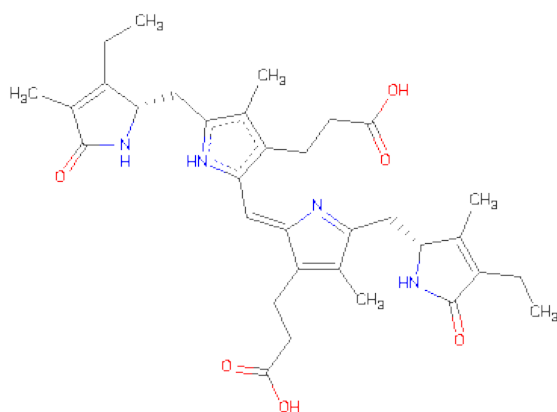
Mol	Chain	Residues	Atoms					ZeroOcc	AltConf	Trace
2	B	177	Total	C	N	O	S	0	0	0
			1285	797	224	252	12			
2	D	177	Total	C	N	O	S	0	0	0
			1285	797	224	252	12			

- Molecule 3 is PHYCOERYTHROBILIN (three-letter code: PEB) (formula:  $C_{33}H_{40}N_4O_6$ ).



Mol	Chain	Residues	Atoms				ZeroOcc	AltConf
3	A	1	Total	C	N	O	0	0
			43	33	4	6		
3	A	1	Total	C	N	O	0	0
			43	33	4	6		
3	B	1	Total	C	N	O	0	0
			43	33	4	6		
3	B	1	Total	C	N	O	0	0
			43	33	4	6		
3	C	1	Total	C	N	O	0	0
			43	33	4	6		
3	C	1	Total	C	N	O	0	0
			43	33	4	6		
3	D	1	Total	C	N	O	0	0
			43	33	4	6		
3	D	1	Total	C	N	O	0	0
			43	33	4	6		

- Molecule 4 is PHYCOUROBILIN (three-letter code: PUB) (formula:  $C_{33}H_{42}N_4O_6$ ).



Mol	Chain	Residues	Atoms				ZeroOcc	AltConf
4	B	1	Total	C	N	O	0	0
			43	33	4	6		
4	D	1	Total	C	N	O	0	0
			43	33	4	6		

- Molecule 5 is water.

Mol	Chain	Residues	Atoms		ZeroOcc	AltConf
5	A	166	Total 166	O 166	0	0
5	B	166	Total 166	O 166	0	0
5	C	145	Total 145	O 145	0	0
5	D	155	Total 155	O 155	0	0

### 3 Residue-property plots

These plots are drawn for all protein, RNA and DNA chains in the entry. The first graphic for a chain summarises the proportions of errors displayed in the second graphic. The second graphic shows the sequence view annotated by issues in geometry and electron density. Residues are color-coded according to the number of geometric quality criteria for which they contain at least one outlier: green = 0, yellow = 1, orange = 2 and red = 3 or more. A red dot above a residue indicates a poor fit to the electron density (RSRZ > 2). Stretches of 2 or more consecutive residues without any outlier are shown as a green connector. Residues present in the sample, but not in the model, are shown in grey.

- Molecule 1: PHYCOERYTHRIN ALPHA CHAIN

Chain A: 



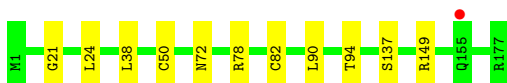
- Molecule 1: PHYCOERYTHRIN ALPHA CHAIN

Chain C: 



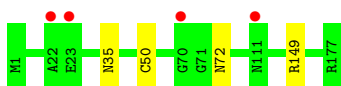
- Molecule 2: PHYCOERYTHRIN BETA SUBUNIT

Chain B: 



- Molecule 2: PHYCOERYTHRIN BETA SUBUNIT

Chain D: 



## 4 Data and refinement statistics

Property	Value	Source
Space group	P 21 3	Depositor
Cell constants a, b, c, $\alpha$ , $\beta$ , $\gamma$	155.83Å 155.83Å 155.83Å 90.00° 90.00° 90.00°	Depositor
Resolution (Å)	43.23 – 2.20 43.22 – 2.20	Depositor EDS
% Data completeness (in resolution range)	100.0 (43.23-2.20) 100.0 (43.22-2.20)	Depositor EDS
$R_{merge}$	0.13	Depositor
$R_{sym}$	(Not available)	Depositor
$\langle I/\sigma(I) \rangle$ <sup>1</sup>	4.07 (at 2.20Å)	Xtriage
Refinement program	REFMAC 5.2.0019	Depositor
R, $R_{free}$	0.153 , 0.186 0.161 , 0.160	Depositor DCC
$R_{free}$ test set	3245 reflections (5.33%)	DCC
Wilson B-factor (Å <sup>2</sup> )	25.4	Xtriage
Anisotropy	0.000	Xtriage
Bulk solvent $k_{sol}$ (e/Å <sup>3</sup> ), $B_{sol}$ (Å <sup>2</sup> )	0.33 , 30.2	EDS
Estimated twinning fraction	0.030 for l,-k,h	Xtriage
L-test for twinning	$\langle  L  \rangle = 0.49$ , $\langle L^2 \rangle = 0.32$	Xtriage
Outliers	0 of 64080 reflections	Xtriage
$F_o, F_c$ correlation	0.95	EDS
Total number of atoms	6116	wwPDB-VP
Average B, all atoms (Å <sup>2</sup> )	30.0	wwPDB-VP

Xtriage's analysis on translational NCS is as follows: *The largest off-origin peak in the Patterson function is 2.14% of the height of the origin peak. No significant pseudotranslation is detected.*

<sup>1</sup>Intensities estimated from amplitudes.

## 5 Model quality

### 5.1 Standard geometry

Bond lengths and bond angles in the following residue types are not validated in this section: MEN, PEB, PUB

The Z score for a bond length (or angle) is the number of standard deviations the observed value is removed from the expected value. A bond length (or angle) with  $|Z| > 5$  is considered an outlier worth inspection. RMSZ is the root-mean-square of all Z scores of the bond lengths (or angles).

Mol	Chain	Bond lengths		Bond angles	
		RMSZ	$\# Z  > 5$	RMSZ	$\# Z  > 5$
1	A	0.65	0/1265	0.67	0/1713
1	C	0.62	0/1265	0.63	0/1713
2	B	0.64	0/1288	0.64	0/1738
2	D	0.61	0/1288	0.63	0/1738
All	All	0.63	0/5106	0.64	0/6902

There are no bond length outliers.

There are no bond angle outliers.

There are no chirality outliers.

There are no planarity outliers.

### 5.2 Close contacts

In the following table, the Non-H and H(model) columns list the number of non-hydrogen atoms and hydrogen atoms in the chain respectively. The H(added) column lists the number of hydrogens added by MolProbity. The Clashes column lists the number of clashes within the asymmetric unit, and the number in parentheses is this value normalized per 1000 atoms of the molecule in the chain. The Symm-Clashes column gives symmetry related clashes, in the same way as for the Clashes column.

Mol	Chain	Non-H	H(model)	H(added)	Clashes	Symm-Clashes
1	A	1242	0	1228	5	0
1	C	1242	0	1228	5	0
2	B	1285	0	1300	5	0
2	D	1285	0	1300	2	0
3	A	86	0	73	4	0
3	B	86	0	73	7	0
3	C	86	0	72	5	0
3	D	86	0	72	8	0

*Continued on next page...*



*Continued from previous page...*

Mol	Chain	Non-H	H(model)	H(added)	Clashes	Symm-Clashes
4	B	43	0	37	0	0
4	D	43	0	37	0	0
5	A	166	0	0	0	0
5	B	166	0	0	1	0
5	C	145	0	0	1	0
5	D	155	0	0	0	0
All	All	6116	0	5420	32	0

Clashscore is defined as the number of clashes calculated for the entry per 1000 atoms (including hydrogens) of the entry. The overall clashscore for this entry is 3.

All (32) close contacts within the same asymmetric unit are listed below.

Atom-1	Atom-2	Distance(Å)	Clash(Å)
3:C:1139:PEB:HNA	3:C:1139:PEB:HMB2	1.41	0.85
3:B:1158:PEB:HMB2	3:B:1158:PEB:HNA	1.45	0.80
3:D:1158:PEB:HNA	3:D:1158:PEB:HMB2	1.48	0.78
1:A:32:GLN:CG	1:C:32:GLN:HG3	2.25	0.66
1:C:27:VAL:O	1:C:30:ASN:HB2	1.98	0.63
1:A:32:GLN:HG3	1:C:32:GLN:CG	2.29	0.63
1:A:32:GLN:HG3	1:C:32:GLN:HG3	1.80	0.62
3:A:1139:PEB:HNA	3:A:1139:PEB:HMB2	1.64	0.61
3:C:1139:PEB:HMD1	3:C:1139:PEB:HBD1	1.88	0.56
3:C:1139:PEB:HMD3	5:C:2114:HOH:O	2.05	0.56
3:C:1139:PEB:HNA	3:C:1139:PEB:CMB	2.17	0.55
3:A:1139:PEB:HBD1	3:A:1139:PEB:HMD1	1.87	0.54
3:D:1082:PEB:HNA	3:D:1082:PEB:HMB2	1.72	0.54
2:B:72:MEN:HE22	3:B:1082:PEB:HBB2	1.89	0.53
3:B:1082:PEB:HMB2	3:B:1082:PEB:HNA	1.74	0.52
3:D:1158:PEB:NA	3:D:1158:PEB:HMB2	2.21	0.52
2:D:72:MEN:HE22	3:D:1082:PEB:HBB2	1.96	0.48
3:A:1082:PEB:HMB2	3:A:1082:PEB:HNA	1.78	0.48
3:B:1158:PEB:CMB	3:B:1158:PEB:HNA	2.23	0.47
1:A:38:LEU:HD22	2:B:24:LEU:HD11	1.96	0.47
2:B:90:LEU:O	2:B:94:THR:HG23	2.14	0.47
3:B:1158:PEB:HHA1	3:B:1158:PEB:HBA3	1.97	0.46
1:A:25:GLU:OE2	1:C:30:ASN:HA	2.17	0.45
3:D:1158:PEB:HBA3	3:D:1158:PEB:HHA1	1.98	0.44
3:D:1158:PEB:HNA	3:D:1158:PEB:CMB	2.25	0.42
3:B:1158:PEB:NA	3:B:1158:PEB:HMB2	2.23	0.42
3:D:1082:PEB:HNA	3:D:1082:PEB:CMB	2.33	0.42
2:D:35:ASN:HB3	3:D:1158:PEB:C1C	2.51	0.41
3:A:1082:PEB:CMB	3:A:1082:PEB:HNA	2.32	0.41

*Continued on next page...*

*Continued from previous page...*

Atom-1	Atom-2	Distance(Å)	Clash(Å)
2:B:78:ARG:NH1	5:B:2062:HOH:O	2.54	0.41
3:C:1139:PEB:HBB1	3:C:1139:PEB:HMB1	2.03	0.41
2:B:82:CYS:HA	3:B:1082:PEB:HAA1	2.03	0.41

There are no symmetry-related clashes.

## 5.3 Torsion angles

### 5.3.1 Protein backbone ⓘ

In the following table, the Percentiles column shows the percent Ramachandran outliers of the chain as a percentile score with respect to all X-ray entries followed by that with respect to entries of similar resolution. The Analysed column shows the number of residues for which the backbone conformation was analysed, and the total number of residues.

Mol	Chain	Analysed	Favoured	Allowed	Outliers	Percentiles	
1	A	162/164 (99%)	161 (99%)	1 (1%)	0	100	100
1	C	162/164 (99%)	161 (99%)	1 (1%)	0	100	100
2	B	174/177 (98%)	171 (98%)	2 (1%)	1 (1%)	33	32
2	D	174/177 (98%)	171 (98%)	3 (2%)	0	100	100
All	All	672/682 (98%)	664 (99%)	7 (1%)	1 (0%)	59	66

All (1) Ramachandran outliers are listed below:

Mol	Chain	Res	Type
2	B	21	GLY

### 5.3.2 Protein sidechains ⓘ

In the following table, the Percentiles column shows the percent sidechain outliers of the chain as a percentile score with respect to all X-ray entries followed by that with respect to entries of similar resolution. The Analysed column shows the number of residues for which the sidechain conformation was analysed, and the total number of residues.

Mol	Chain	Analysed	Rotameric	Outliers	Percentiles	
1	A	123/123 (100%)	123 (100%)	0	100	100
1	C	123/123 (100%)	123 (100%)	0	100	100
2	B	131/131 (100%)	127 (97%)	4 (3%)	52	63

*Continued on next page...*

Continued from previous page...

Mol	Chain	Analysed	Rotameric	Outliers	Percentiles	
2	D	131/131 (100%)	129 (98%)	2 (2%)	76	86
All	All	508/508 (100%)	502 (99%)	6 (1%)	82	90

All (6) residues with a non-rotameric sidechain are listed below:

Mol	Chain	Res	Type
2	B	38	LEU
2	B	50	CYS
2	B	137	SER
2	B	149	ARG
2	D	50	CYS
2	D	149	ARG

Some sidechains can be flipped to improve hydrogen bonding and reduce clashes. All (1) such sidechains are listed below:

Mol	Chain	Res	Type
2	B	42	ASN

### 5.3.3 RNA ⓘ

There are no RNA chains in this entry.

## 5.4 Non-standard residues in protein, DNA, RNA chains ⓘ

2 non-standard protein/DNA/RNA residues are modelled in this entry.

In the following table, the Counts columns list the number of bonds (or angles) for which Mogul statistics could be retrieved, the number of bonds (or angles) that are observed in the model and the number of bonds (or angles) that are defined in the chemical component dictionary. The Link column lists molecule types, if any, to which the group is linked. The Z score for a bond length (or angle) is the number of standard deviations the observed value is removed from the expected value. A bond length (or angle) with  $|Z| > 2$  is considered an outlier worth inspection. RMSZ is the root-mean-square of all Z scores of the bond lengths (or angles).

Mol	Type	Chain	Res	Link	Bond lengths			Bond angles		
					Counts	RMSZ	$\# Z  > 2$	Counts	RMSZ	$\# Z  > 2$
2	MEN	B	72	2	8,8,9	6.00	1 (12%)	7,9,11	0.34	0
2	MEN	D	72	2	8,8,9	6.21	2 (25%)	7,9,11	1.01	1 (14%)

In the following table, the Chirals column lists the number of chiral outliers, the number of chiral

centers analysed, the number of these observed in the model and the number defined in the chemical component dictionary. Similar counts are reported in the Torsion and Rings columns. '-' means no outliers of that kind were identified.

Mol	Type	Chain	Res	Link	Chirals	Torsions	Rings
2	MEN	B	72	2	-	0/6/8/10	0/0/0/0
2	MEN	D	72	2	-	0/6/8/10	0/0/0/0

All (3) bond length outliers are listed below:

Mol	Chain	Res	Type	Atoms	Z	Observed(Å)	Ideal(Å)
2	D	72	MEN	O-C	17.40	1.23	1.11
2	B	72	MEN	O-C	16.90	1.23	1.11
2	D	72	MEN	CA-C	2.42	1.52	1.48

All (1) bond angle outliers are listed below:

Mol	Chain	Res	Type	Atoms	Z	Observed(°)	Ideal(°)
2	D	72	MEN	CB-CG-ND2	2.14	119.16	115.87

There are no chirality outliers.

There are no torsion outliers.

There are no ring outliers.

## 5.5 Carbohydrates ⓘ

There are no carbohydrates in this entry.

## 5.6 Ligand geometry ⓘ

10 ligands are modelled in this entry.

In the following table, the Counts columns list the number of bonds (or angles) for which Mogul statistics could be retrieved, the number of bonds (or angles) that are observed in the model and the number of bonds (or angles) that are defined in the chemical component dictionary. The Link column lists molecule types, if any, to which the group is linked. The Z score for a bond length (or angle) is the number of standard deviations the observed value is removed from the expected value. A bond length (or angle) with  $|Z| > 2$  is considered an outlier worth inspection. RMSZ is the root-mean-square of all Z scores of the bond lengths (or angles).

Mol	Type	Chain	Res	Link	Bond lengths			Bond angles		
					Counts	RMSZ	$\# Z  > 2$	Counts	RMSZ	$\# Z  > 2$
3	PEB	A	1082	1	46,46,46	3.51	11 (23%)	66,67,67	2.33	21 (31%)

Mol	Type	Chain	Res	Link	Bond lengths			Bond angles		
					Counts	RMSZ	# Z  > 2	Counts	RMSZ	# Z  > 2
3	PEB	A	1139	1	46,46,46	3.55	10 (21%)	66,67,67	2.15	18 (27%)
4	PUB	B	1050	2	46,46,46	3.89	11 (23%)	66,67,67	3.43	30 (45%)
3	PEB	B	1082	2	46,46,46	3.86	12 (26%)	66,67,67	2.23	18 (27%)
3	PEB	B	1158	2	46,46,46	3.77	12 (26%)	66,67,67	1.96	16 (24%)
3	PEB	C	1082	1	46,46,46	3.84	12 (26%)	66,67,67	2.30	18 (27%)
3	PEB	C	1139	1	46,46,46	3.68	12 (26%)	66,67,67	2.29	22 (33%)
4	PUB	D	1050	2	46,46,46	4.13	11 (23%)	66,67,67	3.28	25 (37%)
3	PEB	D	1082	2	46,46,46	3.76	10 (21%)	66,67,67	2.41	24 (36%)
3	PEB	D	1158	2	46,46,46	3.62	10 (21%)	66,67,67	2.08	14 (21%)

In the following table, the Chirals column lists the number of chiral outliers, the number of chiral centers analysed, the number of these observed in the model and the number defined in the chemical component dictionary. Similar counts are reported in the Torsion and Rings columns. '-' means no outliers of that kind were identified.

Mol	Type	Chain	Res	Link	Chirals	Torsions	Rings
3	PEB	A	1082	1	-	2/26/74/74	0/4/4/4
3	PEB	A	1139	1	-	2/26/74/74	0/4/4/4
4	PUB	B	1050	2	-	0/26/74/74	0/4/4/4
3	PEB	B	1082	2	-	2/26/74/74	0/4/4/4
3	PEB	B	1158	2	-	2/26/74/74	0/4/4/4
3	PEB	C	1082	1	-	2/26/74/74	0/4/4/4
3	PEB	C	1139	1	-	2/26/74/74	0/4/4/4
4	PUB	D	1050	2	-	0/26/74/74	0/4/4/4
3	PEB	D	1082	2	-	2/26/74/74	0/4/4/4
3	PEB	D	1158	2	-	2/26/74/74	0/4/4/4

All (111) bond length outliers are listed below:

Mol	Chain	Res	Type	Atoms	Z	Observed(Å)	Ideal(Å)
3	B	1082	PEB	CHB-C4B	22.15	1.50	1.35
3	C	1082	PEB	CHB-C4B	22.07	1.50	1.35
4	D	1050	PUB	CHB-C1C	21.85	1.50	1.35
3	D	1082	PEB	CHB-C4B	21.74	1.50	1.35
3	B	1158	PEB	CHB-C4B	21.66	1.50	1.35
3	C	1139	PEB	CHB-C4B	21.05	1.49	1.35
3	D	1158	PEB	CHB-C4B	20.22	1.49	1.35
3	A	1139	PEB	CHB-C4B	19.99	1.48	1.35

Continued on next page...

*Continued from previous page...*

Mol	Chain	Res	Type	Atoms	Z	Observed(Å)	Ideal(Å)
4	B	1050	PUB	CHB-C1C	19.94	1.48	1.35
3	A	1082	PEB	CHB-C4B	19.55	1.48	1.35
4	D	1050	PUB	C3A-C2A	11.29	1.48	1.34
4	B	1050	PUB	C3A-C2A	10.72	1.47	1.34
3	B	1082	PEB	C4C-C3C	8.19	1.50	1.37
3	D	1158	PEB	C4C-C3C	8.10	1.50	1.37
3	C	1082	PEB	C4C-C3C	8.09	1.50	1.37
4	B	1050	PUB	C1B-C2B	7.78	1.50	1.37
3	A	1139	PEB	C4C-C3C	7.69	1.50	1.37
4	D	1050	PUB	C1B-C2B	7.57	1.49	1.37
3	D	1082	PEB	C4C-C3C	7.55	1.49	1.37
3	A	1082	PEB	C4C-C3C	7.53	1.49	1.37
3	C	1139	PEB	C4C-C3C	7.51	1.49	1.37
3	B	1158	PEB	C4C-C3C	7.42	1.49	1.37
3	D	1082	PEB	C3B-C2B	5.52	1.48	1.36
3	B	1082	PEB	C3B-C2B	5.39	1.48	1.36
3	C	1139	PEB	C3B-C2B	5.38	1.48	1.36
3	C	1082	PEB	C3B-C2B	5.27	1.48	1.36
3	D	1158	PEB	C3B-C2B	5.08	1.47	1.36
3	A	1139	PEB	C3B-C2B	4.96	1.47	1.36
3	B	1158	PEB	C3B-C2B	4.88	1.47	1.36
4	D	1050	PUB	C2C-C3C	4.77	1.47	1.36
3	A	1082	PEB	C3B-C2B	4.76	1.46	1.36
4	B	1050	PUB	C2D-C3D	4.75	1.48	1.36
4	B	1050	PUB	C2C-C3C	4.66	1.46	1.36
4	D	1050	PUB	C2D-C3D	4.58	1.47	1.36
3	B	1158	PEB	CHA-C1B	4.25	1.50	1.40
4	B	1050	PUB	C4B-NB	-4.10	1.32	1.36
3	D	1158	PEB	CHA-C1B	4.07	1.50	1.40
3	D	1082	PEB	CHA-C1B	4.06	1.50	1.40
3	B	1158	PEB	C1A-NA	-4.05	1.32	1.37
3	B	1082	PEB	CHA-C1B	3.98	1.50	1.40
3	A	1139	PEB	C1A-NA	-3.95	1.32	1.37
3	A	1139	PEB	CHA-C1B	3.93	1.49	1.40
3	C	1139	PEB	C2D-C3D	3.86	1.48	1.35
3	C	1139	PEB	CHA-C1B	3.81	1.49	1.40
3	A	1082	PEB	OD-C4D	3.78	1.31	1.23
4	D	1050	PUB	C3B-C2B	3.78	1.48	1.37
4	D	1050	PUB	C3C-C4C	3.74	1.50	1.42
4	B	1050	PUB	C3C-C4C	3.73	1.50	1.42
3	D	1082	PEB	C2C-C3C	3.67	1.48	1.37
3	C	1082	PEB	CHA-C1B	3.64	1.49	1.40

*Continued on next page...*

*Continued from previous page...*

Mol	Chain	Res	Type	Atoms	Z	Observed(Å)	Ideal(Å)
3	B	1082	PEB	C2C-C3C	3.58	1.48	1.37
3	C	1082	PEB	C2C-C3C	3.57	1.48	1.37
3	D	1082	PEB	C1C-NC	-3.47	1.33	1.36
3	A	1082	PEB	C2C-C3C	3.45	1.47	1.37
3	A	1082	PEB	C2D-C3D	3.40	1.47	1.35
3	D	1158	PEB	C2D-C3D	3.40	1.47	1.35
3	A	1082	PEB	CHA-C1B	3.39	1.48	1.40
3	C	1082	PEB	C1C-NC	-3.38	1.33	1.36
4	D	1050	PUB	C4B-NB	-3.38	1.33	1.36
3	D	1082	PEB	C2D-C3D	3.37	1.47	1.35
3	B	1158	PEB	C2D-C3D	3.36	1.46	1.35
3	C	1139	PEB	C2C-C3C	3.33	1.47	1.37
3	B	1082	PEB	C2D-C3D	3.30	1.46	1.35
3	C	1082	PEB	C2D-C3D	3.29	1.46	1.35
3	D	1158	PEB	C1C-NC	-3.26	1.33	1.36
3	A	1082	PEB	C1C-NC	-3.25	1.33	1.36
3	A	1139	PEB	C2D-C3D	3.25	1.46	1.35
4	B	1050	PUB	C3B-C2B	3.22	1.47	1.37
3	D	1158	PEB	C1A-NA	-3.22	1.33	1.37
3	B	1082	PEB	C1C-NC	-3.18	1.33	1.36
3	B	1158	PEB	OD-C4D	3.14	1.29	1.23
3	D	1158	PEB	C2C-C3C	3.06	1.46	1.37
3	A	1139	PEB	C1C-NC	-3.01	1.33	1.36
3	A	1139	PEB	C2C-C3C	3.01	1.46	1.37
3	C	1082	PEB	C1A-NA	-2.94	1.33	1.37
3	D	1158	PEB	OD-C4D	2.91	1.29	1.23
3	A	1082	PEB	C1A-NA	-2.91	1.33	1.37
3	B	1158	PEB	C2C-C3C	2.88	1.46	1.37
3	B	1082	PEB	OD-C4D	2.87	1.29	1.23
3	B	1158	PEB	C1C-NC	-2.76	1.33	1.36
4	D	1050	PUB	OD-C4D	2.75	1.29	1.23
3	C	1139	PEB	C1C-NC	-2.66	1.34	1.36
3	C	1139	PEB	C1A-NA	-2.65	1.34	1.37
4	D	1050	PUB	OA-C1A	2.52	1.28	1.23
3	A	1082	PEB	C2A-C1A	-2.52	1.49	1.52
3	A	1082	PEB	C1C-C2C	2.48	1.48	1.42
3	C	1082	PEB	C2A-C1A	-2.43	1.49	1.52
3	A	1139	PEB	OD-C4D	2.40	1.28	1.23
3	D	1082	PEB	C1C-C2C	2.35	1.47	1.42
3	D	1158	PEB	C1C-C2C	2.34	1.47	1.42
3	C	1082	PEB	OD-C4D	2.34	1.28	1.23
3	C	1139	PEB	C1C-C2C	2.34	1.47	1.42

*Continued on next page...*

*Continued from previous page...*

Mol	Chain	Res	Type	Atoms	Z	Observed(Å)	Ideal(Å)
3	C	1139	PEB	OD-C4D	2.34	1.28	1.23
3	C	1082	PEB	C1C-C2C	2.31	1.47	1.42
3	D	1082	PEB	OD-C4D	2.31	1.28	1.23
3	B	1082	PEB	C1A-NA	-2.30	1.34	1.37
3	B	1158	PEB	C4A-NA	-2.29	1.32	1.37
3	B	1082	PEB	C1C-C2C	2.29	1.47	1.42
4	B	1050	PUB	C4B-C3B	2.28	1.47	1.42
4	B	1050	PUB	OD-C4D	2.26	1.28	1.23
3	A	1139	PEB	C4A-NA	-2.18	1.32	1.37
3	C	1139	PEB	C4B-C3B	2.15	1.49	1.45
4	B	1050	PUB	OA-C1A	2.11	1.27	1.23
3	D	1082	PEB	C1B-C2B	2.10	1.50	1.45
3	B	1082	PEB	O2C-CGC	-2.08	1.23	1.30
3	B	1158	PEB	C1B-C2B	2.07	1.50	1.45
4	D	1050	PUB	C4B-C3B	2.05	1.47	1.42
3	C	1082	PEB	C1B-C2B	2.03	1.50	1.45
3	B	1158	PEB	C1C-C2C	2.02	1.47	1.42
3	C	1139	PEB	C4A-NA	-2.01	1.33	1.37
3	B	1082	PEB	O2B-CGB	-2.01	1.23	1.30

All (206) bond angle outliers are listed below:

Mol	Chain	Res	Type	Atoms	Z	Observed(°)	Ideal(°)
4	B	1050	PUB	C2A-C1A-NA	12.71	116.29	107.05
4	D	1050	PUB	C2D-C3D-C4D	-11.56	98.75	108.66
4	D	1050	PUB	C2A-C1A-NA	11.36	115.31	107.05
4	B	1050	PUB	C2D-C3D-C4D	-11.08	99.16	108.66
3	D	1082	PEB	C2D-C3D-C4D	-10.14	99.92	108.91
3	C	1139	PEB	C2D-C3D-C4D	-9.78	100.24	108.91
3	C	1082	PEB	C2D-C3D-C4D	-9.42	100.56	108.91
4	B	1050	PUB	CAD-C3D-C4D	9.36	129.28	121.49
3	A	1139	PEB	C2D-C3D-C4D	-9.35	100.62	108.91
3	B	1082	PEB	C2D-C3D-C4D	-9.20	100.75	108.91
3	A	1082	PEB	C2D-C3D-C4D	-8.55	101.33	108.91
3	D	1158	PEB	C2D-C3D-C4D	-8.50	101.38	108.91
3	B	1158	PEB	C2D-C3D-C4D	-8.03	101.80	108.91
4	B	1050	PUB	C3A-C2A-C1A	-7.97	98.02	107.97
4	D	1050	PUB	C3A-C2A-C1A	-7.92	98.09	107.97
4	D	1050	PUB	CAD-C3D-C4D	7.79	127.97	121.49
4	B	1050	PUB	CHC-C1D-ND	-7.37	106.08	114.18
3	A	1082	PEB	CHA-C1B-NB	-6.73	112.17	124.99
3	C	1082	PEB	CHA-C1B-NB	-6.54	112.54	124.99

*Continued on next page...*



*Continued from previous page...*

Mol	Chain	Res	Type	Atoms	Z	Observed(°)	Ideal(°)
4	D	1050	PUB	C3D-C4D-ND	6.24	114.84	107.19
4	B	1050	PUB	C3D-C4D-ND	6.06	114.62	107.19
4	D	1050	PUB	OD-C4D-C3D	-5.79	121.68	128.20
3	D	1158	PEB	CHC-C1D-ND	-5.77	107.46	114.29
4	D	1050	PUB	CHC-C1D-ND	-5.62	108.00	114.18
3	B	1082	PEB	CHA-C1B-NB	-5.18	115.13	124.99
3	D	1082	PEB	OA-C1A-C2A	-4.80	122.29	126.25
3	B	1082	PEB	CMB-C2B-C1B	4.66	132.71	125.02
3	D	1082	PEB	CHA-C1B-NB	-4.60	116.22	124.99
3	C	1082	PEB	CMB-C2B-C1B	4.50	132.46	125.02
3	B	1082	PEB	CHC-C1D-ND	-4.50	108.96	114.29
3	D	1082	PEB	CMB-C2B-C1B	4.50	132.45	125.02
3	D	1158	PEB	C1C-C2C-C3C	-4.47	102.30	106.92
3	A	1082	PEB	C1C-C2C-C3C	-4.44	102.33	106.92
3	D	1082	PEB	C3D-C4D-ND	4.41	114.00	106.85
3	C	1139	PEB	C3D-C4D-ND	4.31	113.85	106.85
3	C	1139	PEB	CHC-C4C-C3C	-4.29	125.17	130.95
3	A	1139	PEB	C3D-C4D-ND	4.21	113.68	106.85
3	D	1082	PEB	CHC-C1D-ND	-4.17	109.35	114.29
3	D	1158	PEB	C2C-C1C-NC	4.16	113.66	106.79
4	B	1050	PUB	CBA-CAA-C3A	-4.16	106.79	112.93
4	D	1050	PUB	C2C-C3C-C4C	-4.15	104.83	106.23
3	A	1082	PEB	CMB-C2B-C1B	4.10	131.79	125.02
3	A	1139	PEB	CHC-C4C-C3C	-4.09	125.45	130.95
3	D	1082	PEB	C1C-C2C-C3C	-4.07	102.71	106.92
4	D	1050	PUB	CBB-CAB-C3B	-4.06	105.53	112.69
3	A	1139	PEB	C2C-C1C-NC	4.05	113.47	106.79
3	C	1139	PEB	C1C-C2C-C3C	-4.01	102.77	106.92
3	C	1082	PEB	CHA-C1B-C2B	3.98	135.03	125.10
3	B	1082	PEB	C3D-C4D-ND	3.95	113.26	106.85
3	C	1082	PEB	C3D-C4D-ND	3.90	113.18	106.85
3	B	1158	PEB	CHC-C1D-ND	-3.90	109.67	114.29
3	B	1082	PEB	C2A-C1A-NA	3.90	110.47	108.19
4	D	1050	PUB	CMA-C2A-C1A	3.87	131.61	121.59
4	B	1050	PUB	OD-C4D-C3D	-3.87	123.84	128.20
4	B	1050	PUB	CMA-C2A-C1A	3.86	131.59	121.59
3	A	1082	PEB	C2C-C1C-NC	3.80	113.06	106.79
3	A	1139	PEB	C4C-CHC-C1D	-3.78	105.51	113.19
4	B	1050	PUB	CBB-CAB-C3B	-3.76	106.07	112.69
3	A	1082	PEB	OA-C1A-C2A	-3.73	123.16	126.25
3	C	1139	PEB	C2A-C1A-NA	3.73	110.37	108.19
3	C	1082	PEB	CHC-C1D-ND	-3.64	109.98	114.29

*Continued on next page...*

*Continued from previous page...*

Mol	Chain	Res	Type	Atoms	Z	Observed(°)	Ideal(°)
3	B	1158	PEB	CHC-C4C-C3C	-3.61	126.08	130.95
3	B	1082	PEB	OA-C1A-C2A	-3.61	123.27	126.25
4	B	1050	PUB	CMC-C3C-C4C	3.61	131.91	126.93
3	A	1082	PEB	CHA-C1B-C2B	3.57	134.00	125.10
3	D	1158	PEB	C4B-C3B-C2B	-3.55	102.74	106.86
3	C	1139	PEB	C2C-C1C-NC	3.54	112.63	106.79
3	D	1082	PEB	C2C-C1C-NC	3.53	112.62	106.79
3	B	1158	PEB	C2C-C1C-NC	3.52	112.59	106.79
3	D	1158	PEB	C3D-C4D-ND	3.51	112.54	106.85
4	D	1050	PUB	C4B-C3B-C2B	-3.50	103.29	106.92
4	B	1050	PUB	C3B-C4B-NB	3.50	112.57	106.79
3	A	1139	PEB	C1C-C2C-C3C	-3.48	103.32	106.92
3	C	1139	PEB	CHC-C1D-ND	-3.47	110.19	114.29
3	B	1082	PEB	C1C-C2C-C3C	-3.47	103.33	106.92
3	A	1139	PEB	CBC-CAC-C2C	-3.45	106.61	112.69
3	C	1139	PEB	OA-C1A-C2A	-3.45	123.40	126.25
3	C	1082	PEB	C1C-C2C-C3C	-3.44	103.36	106.92
3	B	1158	PEB	C1C-C2C-C3C	-3.43	103.36	106.92
4	B	1050	PUB	C4B-C3B-C2B	-3.42	103.38	106.92
3	D	1158	PEB	CMB-C2B-C1B	3.42	130.67	125.02
4	B	1050	PUB	CHA-C4A-NA	-3.40	110.27	114.29
3	C	1082	PEB	C2C-C1C-NC	3.39	112.39	106.79
3	A	1082	PEB	CHC-C1D-ND	-3.35	110.33	114.29
3	B	1158	PEB	CMB-C2B-C1B	3.34	130.53	125.02
3	A	1082	PEB	CHC-C4C-C3C	-3.30	126.50	130.95
3	B	1158	PEB	C3D-C4D-ND	3.29	112.19	106.85
3	D	1082	PEB	OD-C4D-ND	-3.28	120.97	126.19
3	A	1082	PEB	OA-C1A-NA	3.28	128.86	124.80
3	D	1158	PEB	CHC-C4C-C3C	-3.27	126.54	130.95
3	C	1139	PEB	CMB-C2B-C1B	3.26	130.41	125.02
3	C	1139	PEB	CHA-C1B-NB	-3.25	118.81	124.99
4	D	1050	PUB	C3B-C4B-NB	3.22	112.11	106.79
4	D	1050	PUB	CHA-C4A-NA	-3.21	110.50	114.29
3	B	1082	PEB	CHA-C1B-C2B	3.19	133.05	125.10
3	B	1158	PEB	CMC-C3C-C4C	3.18	131.13	127.11
3	C	1082	PEB	CHC-C4C-C3C	-3.18	126.67	130.95
3	C	1139	PEB	CAB-CBB-CGB	-3.15	107.68	113.53
3	B	1082	PEB	C2C-C1C-NC	3.15	111.98	106.79
3	D	1082	PEB	C1B-C2B-C3B	-3.14	102.75	106.64
3	C	1082	PEB	CBB-CAB-C3B	-3.14	103.43	112.71
3	A	1139	PEB	C2A-C1A-NA	3.14	110.03	108.19
3	A	1139	PEB	C4B-C3B-C2B	-3.12	103.23	106.86

*Continued on next page...*

*Continued from previous page...*

Mol	Chain	Res	Type	Atoms	Z	Observed(°)	Ideal(°)
3	B	1082	PEB	CAB-CBB-CGB	-3.11	107.77	113.53
4	D	1050	PUB	CBA-CAA-C3A	-3.10	108.35	112.93
3	C	1139	PEB	C4B-C3B-C2B	-3.09	103.27	106.86
3	B	1158	PEB	C4B-C3B-C2B	-3.08	103.28	106.86
3	A	1082	PEB	C3D-C4D-ND	3.03	111.77	106.85
4	D	1050	PUB	C1C-NC-C4C	3.03	108.47	105.83
3	D	1082	PEB	CBA-CAA-C3A	-3.03	106.16	113.61
4	B	1050	PUB	C1C-NC-C4C	2.94	108.39	105.83
3	C	1139	PEB	CHB-C4B-NB	-2.92	123.20	128.59
4	B	1050	PUB	OD-C4D-ND	-2.92	121.54	126.19
3	C	1082	PEB	CAA-C3A-C4A	2.90	120.12	112.67
3	D	1082	PEB	CAB-CBB-CGB	-2.89	108.16	113.53
3	D	1082	PEB	C2A-C1A-NA	2.88	109.88	108.19
3	A	1082	PEB	CAA-C3A-C4A	2.88	120.07	112.67
3	D	1158	PEB	C3B-C4B-NB	2.88	114.35	109.79
3	D	1082	PEB	CHA-C4A-NA	2.86	130.82	126.09
4	B	1050	PUB	C3C-C4C-NC	-2.86	109.34	112.14
3	A	1139	PEB	CMB-C2B-C1B	2.84	129.71	125.02
3	A	1082	PEB	C1B-C2B-C3B	-2.83	103.13	106.64
3	A	1139	PEB	OD-C4D-C3D	-2.82	122.70	130.22
3	A	1082	PEB	CBA-CAA-C3A	-2.81	106.69	113.61
3	B	1082	PEB	C1B-C2B-C3B	-2.81	103.16	106.64
3	A	1082	PEB	CBB-CAB-C3B	-2.80	104.44	112.71
3	A	1139	PEB	C3B-C4B-NB	2.80	114.22	109.79
3	C	1082	PEB	C1B-C2B-C3B	-2.79	103.18	106.64
4	B	1050	PUB	C4A-NA-C1A	-2.75	109.53	113.89
3	D	1158	PEB	OD-C4D-ND	-2.69	121.92	126.19
3	B	1158	PEB	C3B-C4B-NB	2.65	113.98	109.79
4	B	1050	PUB	C1C-C2C-C3C	-2.64	103.79	106.86
3	B	1158	PEB	OD-C4D-ND	-2.62	122.02	126.19
3	C	1139	PEB	OD-C4D-C3D	-2.58	123.32	130.22
4	D	1050	PUB	CMC-C3C-C4C	2.58	130.49	126.93
3	B	1158	PEB	CAC-C2C-C1C	2.58	130.25	124.73
3	A	1082	PEB	OD-C4D-ND	-2.57	122.10	126.19
3	C	1082	PEB	CMA-C2A-C1A	-2.56	106.91	112.38
3	C	1139	PEB	CAB-C3B-C4B	2.55	129.56	124.85
3	D	1082	PEB	CHC-C4C-C3C	-2.54	127.52	130.95
3	C	1139	PEB	C2A-C3A-C4A	2.52	104.65	101.08
4	B	1050	PUB	C2C-C3C-C4C	-2.52	105.38	106.23
3	D	1082	PEB	CHA-C1B-C2B	2.52	131.37	125.10
4	B	1050	PUB	CHA-C1B-C2B	-2.50	127.58	130.95
3	D	1158	PEB	CHB-C4B-C3B	-2.50	119.07	125.48

*Continued on next page...*

*Continued from previous page...*

Mol	Chain	Res	Type	Atoms	Z	Observed(°)	Ideal(°)
4	B	1050	PUB	OA-C1A-NA	-2.47	122.26	126.19
3	C	1139	PEB	C1B-C2B-C3B	-2.45	103.60	106.64
4	D	1050	PUB	C4A-C3A-C2A	2.45	114.56	109.50
3	C	1139	PEB	C3A-C2A-C1A	-2.44	101.33	103.43
3	A	1139	PEB	C1B-C2B-C3B	-2.44	103.61	106.64
3	D	1082	PEB	OA-C1A-NA	2.44	127.82	124.80
4	D	1050	PUB	CHA-C1B-C2B	-2.42	127.69	130.95
4	D	1050	PUB	CAD-C3D-C2D	2.41	133.28	128.49
3	C	1082	PEB	OD-C4D-ND	-2.41	122.36	126.19
3	A	1082	PEB	CMA-C2A-C1A	-2.40	107.24	112.38
3	D	1158	PEB	CAB-C3B-C4B	2.40	129.30	124.85
4	D	1050	PUB	OA-C1A-NA	-2.39	122.38	126.19
3	D	1082	PEB	C3A-C4A-CHA	-2.39	120.28	127.47
3	A	1139	PEB	CHA-C1B-NB	-2.38	120.46	124.99
4	D	1050	PUB	C1D-C2D-C3D	2.35	114.27	108.78
3	D	1158	PEB	CAC-C2C-C1C	2.34	129.74	124.73
4	D	1050	PUB	CAC-CBC-CGC	-2.33	109.22	113.53
3	D	1158	PEB	CAD-C3D-C4D	2.32	131.69	123.12
3	D	1082	PEB	CAA-C3A-C2A	-2.30	108.61	113.89
3	B	1082	PEB	OD-C4D-C3D	-2.29	124.10	130.22
3	B	1082	PEB	CHC-C4C-C3C	-2.29	127.86	130.95
4	D	1050	PUB	C1C-C2C-C3C	-2.29	104.20	106.86
3	C	1139	PEB	CHA-C4A-NA	2.28	129.86	126.09
3	A	1082	PEB	C3A-C4A-CHA	-2.25	120.72	127.47
3	C	1082	PEB	OA-C1A-NA	2.24	127.57	124.80
3	C	1139	PEB	C3B-C4B-NB	2.24	113.34	109.79
3	B	1082	PEB	OD-C4D-ND	-2.23	122.64	126.19
4	D	1050	PUB	C3C-C4C-NC	-2.22	109.96	112.14
3	C	1082	PEB	CBA-CAA-C3A	-2.22	108.14	113.61
3	B	1082	PEB	C2A-C3A-C4A	2.21	104.20	101.08
3	A	1082	PEB	C3A-C2A-C1A	2.19	105.31	103.43
4	B	1050	PUB	CAC-CBC-CGC	-2.19	109.47	113.53
3	D	1082	PEB	C2A-C3A-C4A	2.19	104.18	101.08
3	B	1082	PEB	C1D-ND-C4D	-2.19	110.42	113.89
4	B	1050	PUB	C4A-C3A-C2A	2.18	114.01	109.50
3	A	1139	PEB	CHA-C4A-NA	2.18	129.70	126.09
3	C	1082	PEB	OD-C4D-C3D	-2.18	124.42	130.22
3	D	1082	PEB	CMD-C2D-C1D	-2.17	114.07	120.35
3	A	1139	PEB	C3C-C4C-NC	2.17	110.41	106.83
3	B	1158	PEB	CHB-C4B-C3B	-2.16	119.95	125.48
3	A	1139	PEB	CHB-C4B-NB	-2.16	124.61	128.59
4	D	1050	PUB	C1D-ND-C4D	-2.15	110.48	113.89

*Continued on next page...*

*Continued from previous page...*

Mol	Chain	Res	Type	Atoms	Z	Observed(°)	Ideal(°)
3	A	1139	PEB	C3A-C4A-CHA	-2.15	121.02	127.47
3	B	1158	PEB	CAD-C3D-C4D	2.14	131.06	123.12
3	A	1082	PEB	CHA-C4A-NA	2.13	129.61	126.09
3	C	1139	PEB	OD-C4D-ND	-2.12	122.82	126.19
4	B	1050	PUB	O2B-CGB-CBB	2.11	121.66	114.22
3	C	1082	PEB	CAD-C3D-C4D	2.10	130.89	123.12
3	B	1082	PEB	CAD-C3D-C4D	2.10	130.89	123.12
4	B	1050	PUB	CBD-CAD-C3D	-2.10	106.04	112.38
3	D	1082	PEB	CHB-C4B-C3B	-2.09	120.12	125.48
3	B	1158	PEB	C1B-C2B-C3B	-2.09	104.05	106.64
4	B	1050	PUB	C2C-C1C-NC	2.09	113.09	109.79
3	B	1158	PEB	CAB-C3B-C4B	2.08	128.70	124.85
3	A	1082	PEB	C3B-C4B-NB	2.06	113.05	109.79
3	D	1082	PEB	C3B-C4B-NB	2.05	113.03	109.79
4	B	1050	PUB	CMB-C2B-C1B	2.03	129.68	127.11
4	B	1050	PUB	C1D-C2D-C3D	2.02	113.50	108.78
3	D	1082	PEB	CMC-C3C-C4C	2.02	129.67	127.11
3	C	1139	PEB	C3A-C4A-CHA	-2.01	121.43	127.47
4	B	1050	PUB	CAC-C2C-C1C	2.01	128.57	124.85

There are no chirality outliers.

All (16) torsion outliers are listed below:

Mol	Chain	Res	Type	Atoms
3	C	1082	PEB	C4A-CHA-C1B-C2B
3	A	1082	PEB	C4A-CHA-C1B-C2B
3	C	1082	PEB	C4A-CHA-C1B-NB
3	A	1082	PEB	C4A-CHA-C1B-NB
3	D	1082	PEB	C4A-CHA-C1B-C2B
3	D	1082	PEB	C4A-CHA-C1B-NB
3	B	1082	PEB	C4A-CHA-C1B-C2B
3	B	1082	PEB	C4A-CHA-C1B-NB
3	C	1139	PEB	C4A-CHA-C1B-C2B
3	C	1139	PEB	C4A-CHA-C1B-NB
3	B	1158	PEB	C4A-CHA-C1B-NB
3	B	1158	PEB	C4A-CHA-C1B-C2B
3	D	1158	PEB	C4A-CHA-C1B-NB
3	A	1139	PEB	C4A-CHA-C1B-C2B
3	D	1158	PEB	C4A-CHA-C1B-C2B
3	A	1139	PEB	C4A-CHA-C1B-NB

There are no ring outliers.

## 5.7 Other polymers ⓘ

There are no such residues in this entry.

## 5.8 Polymer linkage issues

There are no chain breaks in this entry.

## 6 Fit of model and data ⓘ

### 6.1 Protein, DNA and RNA chains ⓘ

In the following table, the column labelled ‘#RSRZ> 2’ contains the number (and percentage) of RSRZ outliers, followed by percent RSRZ outliers for the chain as percentile scores relative to all X-ray entries and entries of similar resolution. The OWAB column contains the minimum, median, 95<sup>th</sup> percentile and maximum values of the occupancy-weighted average B-factor per residue. The column labelled ‘Q< 0.9’ lists the number of (and percentage) of residues with an average occupancy less than 0.9.

Mol	Chain	Analysed	<RSRZ>	#RSRZ>2	OWAB(Å <sup>2</sup> )	Q<0.9
1	A	164/164 (100%)	-0.08	0 100 100	23, 29, 37, 48	0
1	C	164/164 (100%)	-0.46	0 100 100	25, 29, 35, 48	0
2	B	177/177 (100%)	-0.53	1 (0%) 86 88	22, 28, 38, 48	0
2	D	177/177 (100%)	-0.53	4 (2%) 57 58	23, 28, 38, 47	0
All	All	682/682 (100%)	-0.40	5 (0%) 81 86	22, 28, 38, 48	0

All (5) RSRZ outliers are listed below:

Mol	Chain	Res	Type	RSRZ
2	D	70	GLY	2.4
2	D	111	ASN	2.4
2	B	155	GLN	2.2
2	D	22	ALA	2.2
2	D	23	GLU	2.1

### 6.2 Non-standard residues in protein, DNA, RNA chains ⓘ

In the following table, the Atoms column lists the number of modelled atoms in the group and the number defined in the chemical component dictionary. LLDF column lists the quality of electron density of the group with respect to its neighbouring residues in protein, DNA or RNA chains. The B-factors column lists the minimum, median, 95<sup>th</sup> percentile and maximum values of B factors of atoms in the group. The column labelled ‘Q< 0.9’ lists the number of atoms with occupancy less than 0.9.

Mol	Type	Chain	Res	Atoms	RSR	LLDF	B-factors(Å <sup>2</sup> )	Q<0.9
2	MEN	D	72	9/10	0.08	-0.58	26,27,27,29	0
2	MEN	B	72	9/10	0.07	-1.73	26,28,29,29	0

### 6.3 Carbohydrates ⓘ

There are no carbohydrates in this entry.

### 6.4 Ligands ⓘ

In the following table, the Atoms column lists the number of modelled atoms in the group and the number defined in the chemical component dictionary. LLDF column lists the quality of electron density of the group with respect to its neighbouring residues in protein, DNA or RNA chains. The B-factors column lists the minimum, median, 95<sup>th</sup> percentile and maximum values of B factors of atoms in the group. The column labelled 'Q< 0.9' lists the number of atoms with occupancy less than 0.9.

Mol	Type	Chain	Res	Atoms	RSR	LLDF	B-factors(Å <sup>2</sup> )	Q<0.9
3	PEB	C	1139	43/43	0.22	3.16	29,32,38,40	0
3	PEB	D	1082	43/43	0.13	1.13	26,28,37,46	0
4	PUB	D	1050	43/43	0.11	0.57	27,31,35,36	0
3	PEB	B	1082	43/43	0.11	0.47	25,28,39,47	0
3	PEB	A	1082	43/43	0.14	0.33	23,25,30,36	0
3	PEB	D	1158	43/43	0.11	0.17	23,26,39,51	0
4	PUB	B	1050	43/43	0.10	0.12	27,29,36,38	0
3	PEB	B	1158	43/43	0.10	-0.13	25,27,36,47	0
3	PEB	C	1082	43/43	0.07	-0.56	25,27,30,34	0
3	PEB	A	1139	43/43	0.10	-0.84	22,25,29,30	0

### 6.5 Other polymers ⓘ

There are no such residues in this entry.