



Full wwPDB X-ray Structure Validation Report

Feb 27, 2014 – 03:33 AM GMT

PDB ID : 3VQ1
Title : Crystal structure of mouse TLR4/MD-2/lipid IVa complex
Authors : Ohto, U.; Shimizu, T.
Deposited on : 2012-03-17
Resolution : 2.70 Å(reported)

This is a full wwPDB validation report for a publicly released PDB entry.
We welcome your comments at validation@mail.wwpdb.org
A user guide is available at <http://wwpdb.org/ValidationPDFNotes.html>

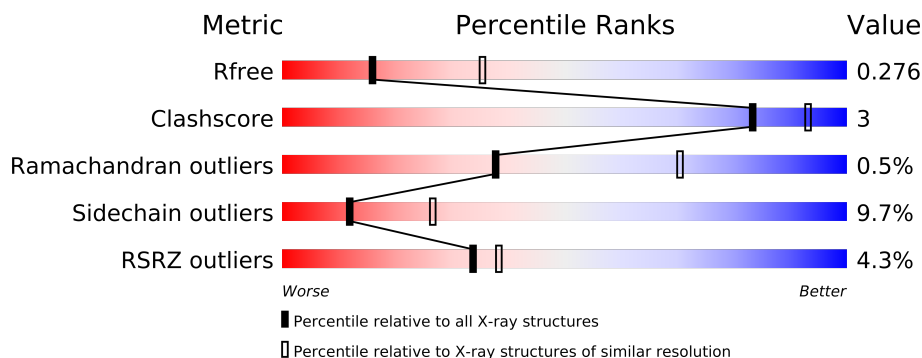
The following versions of software and data (see [references](#)) were used in the production of this report:

MolProbity : 4.02b-467
Mogul : 1.15 2013
Xtriage (Phenix) : dev-1323
EDS : stable22639
Percentile statistics : 21963
Refmac : 5.8.0049
CCP4 : 6.3.0 (Settle)
Ideal geometry (proteins) : Engh & Huber (2001)
Ideal geometry (DNA, RNA) : Parkinson et. al. (1996)
Validation Pipeline (wwPDB-VP) : stable22683

1 Overall quality at a glance

The reported resolution of this entry is 2.70 Å.

Percentile scores (ranging between 0-100) for global validation metrics of the entry are shown in the following graphic. The table shows the number of entries on which the scores are based.



Metric	Whole archive (#Entries)	Similar resolution (#Entries, resolution range(Å))
R_{free}	66092	1557 (2.70-2.70)
Clashscore	79885	1939 (2.70-2.70)
Ramachandran outliers	78287	1905 (2.70-2.70)
Sidechain outliers	78261	1905 (2.70-2.70)
RSRZ outliers	66119	1559 (2.70-2.70)

The table below summarises the geometric issues observed across the polymeric chains and their fit to the electron density. The red, orange, yellow and green segments on the lower bar indicate the fraction of residues that contain outliers for ≥ 3 , 2, 1 and 0 types of geometric quality criteria. The upper red bar (where present) indicates the fraction of residues that have poor fit to the electron density.

Mol	Chain	Length	Quality of chain
1	A	606	
1	B	606	
2	C	144	
2	D	144	

The following table lists non-polymeric compounds that are outliers for geometric or electron-density-fit criteria:

Mol	Type	Chain	Res	Geometry	Electron density
4	NAG	B	802	-	X

2 Entry composition

There are 7 unique types of molecules in this entry. The entry contains 12017 atoms, of which 0 are hydrogen and 0 are deuterium.

In the tables below, the ZeroOcc column contains the number of atoms modelled with zero occupancy, the AltConf column contains the number of residues with at least one atom in alternate conformation and the Trace column contains the number of residues modelled with at most 2 atoms.

- Molecule 1 is a protein called Toll-like receptor 4.

Mol	Chain	Residues	Atoms					ZeroOcc	AltConf	Trace
1	A	596	Total	C	N	O	S	3	0	0
			4749	3040	782	900	27			
1	B	596	Total	C	N	O	S	3	0	0
			4749	3040	782	900	27			

- Molecule 2 is a protein called Lymphocyte antigen 96.

Mol	Chain	Residues	Atoms					ZeroOcc	AltConf	Trace
2	C	135	Total	C	N	O	S	0	0	0
			1092	706	182	197	7			
2	D	135	Total	C	N	O	S	0	0	0
			1092	706	182	197	7			

- Molecule 3 is a polymer of unknown type called SUGAR (2-MER).

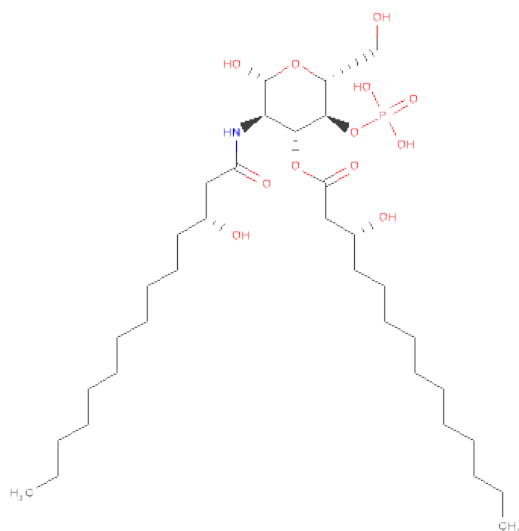
Mol	Chain	Residues	Atoms				ZeroOcc	AltConf
3	A	2	Total	C	N	O	0	0
			28	16	2	10		
3	A	2	Total	C	N	O	0	0
			28	16	2	10		
3	B	2	Total	C	N	O	0	0
			28	16	2	10		

- Molecule 4 is SUGAR (N-ACETYL-D-GLUCOSAMINE) (three-letter code: NAG) (formula: C₈H₁₅NO₆).



Mol	Chain	Residues	Atoms				ZeroOcc	AltConf
4	A	1	Total	C	N	O	0	0
			14	8	1	5		
4	B	1	Total	C	N	O	0	0
			14	8	1	5		

- Molecule 5 is 2-DEOXY-3-O-[(3R)-3-HYDROXYTETRADECANOYL]-2-{[(3R)-3-HYDROXYTETRADECANOYL]AMINO}-4-O-PHOSPHONO-BETA-D-GLUCOPYRANOSE (three-letter code: LP4) (formula: $C_{34}H_{66}NO_{12}P$).



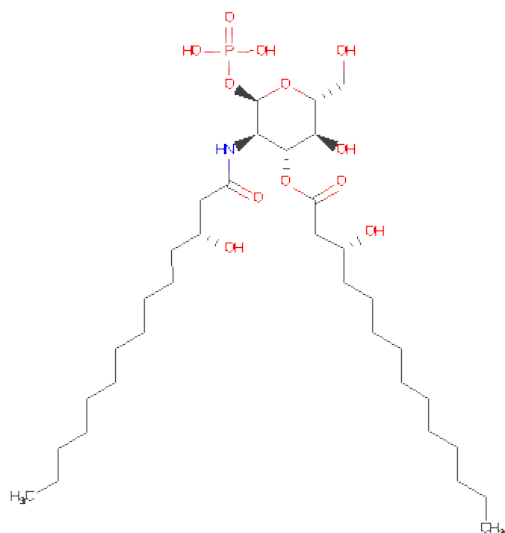
Mol	Chain	Residues	Atoms					ZeroOcc	AltConf
5	C	1	Total	C	N	O	P	0	0
			45	32	1	11	1		

Continued on next page...

Continued from previous page...

Mol	Chain	Residues	Atoms					ZeroOcc	AltConf
5	D	1	Total	C	N	O	P	0	0
			45	32	1	11	1		

- Molecule 6 is (R)-((2R,3S,4R,5R,6R)-3-HYDROXY-2-(HYDROXYMETHYL)-5-((R)-3-HYDROXYTETRADECANAMIDO)-6-(PHOSPHONOOXY)TETRAHYDRO-2H-PYRAN-4-YL)3-HYDROXYTETRADECANOATE (three-letter code: LP5) (formula: C₃₄H₆₆NO₁₂P).



Mol	Chain	Residues	Atoms					ZeroOcc	AltConf
6	C	1	Total	C	N	O	P	0	0
			48	34	1	12	1		
6	D	1	Total	C	N	O	P	0	0
			48	34	1	12	1		

- Molecule 7 is water.

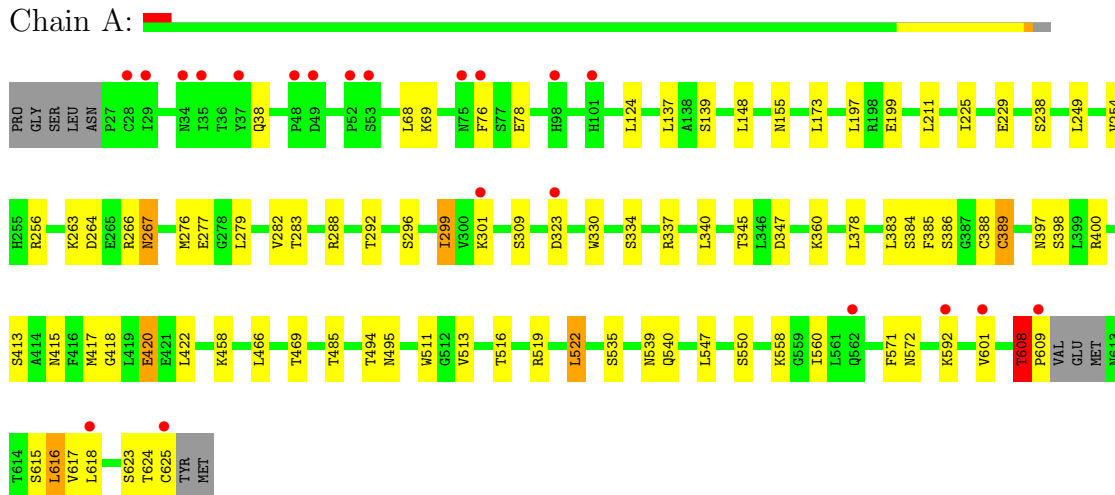
Mol	Chain	Residues	Atoms		ZeroOcc	AltConf
7	A	15	Total	O	0	0
			15	15		
7	C	4	Total	O	0	0
			4	4		
7	B	17	Total	O	0	0
			17	17		
7	D	1	Total	O	0	0
			1	1		

3 Residue-property plots

These plots are drawn for all protein, RNA and DNA chains in the entry. The first graphic for a chain summarises the proportions of errors displayed in the second graphic. The second graphic shows the sequence view annotated by issues in geometry and electron density. Residues are color-coded according to the number of geometric quality criteria for which they contain at least one outlier: green = 0, yellow = 1, orange = 2 and red = 3 or more. A red dot above a residue indicates a poor fit to the electron density ($RSRZ > 2$). Stretches of 2 or more consecutive residues without any outlier are shown as a green connector. Residues present in the sample, but not in the model, are shown in grey.

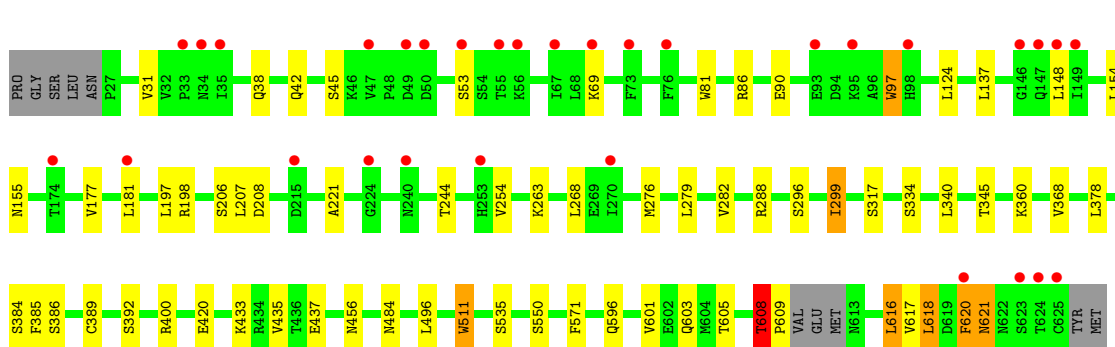
- Molecule 1: Toll-like receptor 4

Chain A:



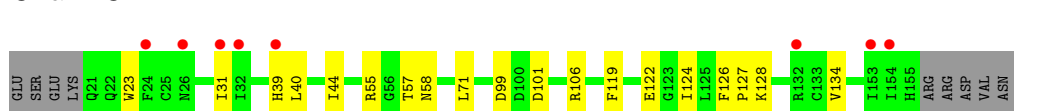
- Molecule 1: Toll-like receptor 4

Chain B:



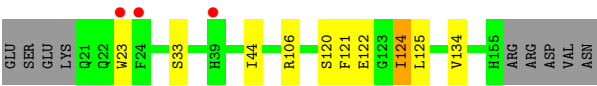
- Molecule 2: Lymphocyte antigen 96

Chain C:



- Molecule 2: Lymphocyte antigen 96

Chain D:



4 Data and refinement statistics

Property	Value	Source
Space group	P 21 21 21	Depositor
Cell constants a, b, c, α , β , γ	77.16Å 150.52Å 181.85Å 90.00° 90.00° 90.00°	Depositor
Resolution (Å)	50.00 – 2.70 39.17 – 2.70	Depositor EDS
% Data completeness (in resolution range)	96.5 (50.00-2.70) 96.5 (39.17-2.70)	Depositor EDS
R_{merge}	(Not available)	Depositor
R_{sym}	0.15	Depositor
$\langle I/\sigma(I) \rangle$ ¹	2.83 (at 2.69Å)	Xtriage
Refinement program	REFMAC 5.6.0117	Depositor
R, R_{free}	0.234 , 0.277 0.224 , 0.276	Depositor DCC
R_{free} test set	2877 reflections (5.30%)	DCC
Wilson B-factor (Å ²)	42.8	Xtriage
Anisotropy	0.034	Xtriage
Bulk solvent k_{sol} (e/Å ³), B_{sol} (Å ²)	0.32 , 20.7	EDS
Estimated twinning fraction	No twinning to report.	Xtriage
L-test for twinning	$\langle L \rangle = 0.48$, $\langle L^2 \rangle = 0.31$	Xtriage
Outliers	0 of 57152 reflections	Xtriage
F_o, F_c correlation	0.91	EDS
Total number of atoms	12017	wwPDB-VP
Average B, all atoms (Å ²)	54.0	wwPDB-VP

Xtriage's analysis on translational NCS is as follows: *The largest off-origin peak in the Patterson function is 3.32% of the height of the origin peak. No significant pseudotranslation is detected.*

¹Intensities estimated from amplitudes.

5 Model quality

5.1 Standard geometry

Bond lengths and bond angles in the following residue types are not validated in this section: LP5, LP4, NAG

The Z score for a bond length (or angle) is the number of standard deviations the observed value is removed from the expected value. A bond length (or angle) with $|Z| > 5$ is considered an outlier worth inspection. RMSZ is the root-mean-square of all Z scores of the bond lengths (or angles).

Mol	Chain	Bond lengths		Bond angles	
		RMSZ	# Z >5	RMSZ	# Z >5
1	A	0.50	2/4848 (0.0%)	0.67	2/6569 (0.0%)
1	B	0.48	3/4848 (0.1%)	0.61	0/6569
2	C	0.50	1/1123 (0.1%)	0.61	0/1519
2	D	0.49	1/1123 (0.1%)	0.57	0/1519
All	All	0.49	7/11942 (0.1%)	0.63	2/16176 (0.0%)

Chiral center outliers are detected by calculating the chiral volume of a chiral center and verifying if the center is modelled as a planar moiety or with the opposite hand. A planarity outlier is detected by checking planarity of atoms in a peptide group, atoms in a mainchain group or atoms of a sidechain that are expected to be planar.

Mol	Chain	#Chirality outliers	#Planarity outliers
1	A	0	2
1	B	0	1
All	All	0	3

All (7) bond length outliers are listed below:

Mol	Chain	Res	Type	Atoms	Z	Observed(Å)	Ideal(Å)
2	D	23	TRP	CD2-CE2	5.54	1.48	1.41
1	A	511	TRP	CD2-CE2	5.43	1.47	1.41
1	B	511	TRP	CD2-CE2	5.39	1.47	1.41
2	C	23	TRP	CD2-CE2	5.31	1.47	1.41
1	B	97	TRP	CD2-CE2	5.25	1.47	1.41
1	A	330	TRP	CD2-CE2	5.19	1.47	1.41
1	B	81	TRP	CD2-CE2	5.15	1.47	1.41

All (2) bond angle outliers are listed below:

Mol	Chain	Res	Type	Atoms	Z	Observed(°)	Ideal(°)
1	A	383	LEU	CA-CB-CG	5.95	128.99	115.30
1	A	522	LEU	CA-CB-CG	5.62	128.23	115.30

There are no chirality outliers.

All (3) planarity outliers are listed below:

Mol	Chain	Res	Type	Group
1	A	323	ASP	Peptide
1	A	608	THR	Peptide
1	B	608	THR	Peptide

5.2 Close contacts ⓘ

In the following table, the Non-H and H(model) columns list the number of non-hydrogen atoms and hydrogen atoms in the chain respectively. The H(added) column lists the number of hydrogens added by MolProbity. The Clashes column lists the number of clashes within the asymmetric unit, and the number in parentheses is this value normalized per 1000 atoms of the molecule in the chain. The Symm-Clashes column gives symmetry related clashes, in the same way as for the Clashes column.

Mol	Chain	Non-H	H(model)	H(added)	Clashes	Symm-Clashes
1	A	4749	0	0	16	0
1	B	4749	0	0	11	0
2	C	1092	0	0	5	0
2	D	1092	0	0	4	0
3	A	56	0	49	0	0
3	B	28	0	25	1	0
4	A	14	0	13	2	0
4	B	14	0	13	1	0
5	C	45	0	55	4	0
5	D	45	0	55	2	0
6	C	48	0	63	2	0
6	D	48	0	63	2	0
7	A	15	0	0	0	0
7	B	17	0	0	1	0
7	C	4	0	0	0	0
7	D	1	0	0	0	0
All	All	12017	0	336	37	0

Clashscore is defined as the number of clashes calculated for the entry per 1000 atoms (including hydrogens) of the entry. The overall clashscore for this entry is 3.

All (37) close contacts within the same asymmetric unit are listed below.

Atom-1	Atom-2	Distance(Å)	Clash(Å)
1:A:263:LYS:NZ	5:C:300:LP4:O46	2.04	0.90
1:A:550:SER:OG	4:A:705:NAG:H82	1.85	0.76
1:B:620:PHE:O	1:B:621:ASN:CB	2.35	0.74
1:B:296:SER:O	1:B:299:ILE:CG2	2.38	0.72
1:A:623:SER:O	1:A:625:CYS:N	2.32	0.63
1:A:296:SER:O	1:A:299:ILE:CG2	2.49	0.60
1:B:263:LYS:NZ	5:D:300:LP4:O46	2.36	0.58
3:B:800:NAG:H62	3:B:801:NAG:C7	2.35	0.57
5:C:300:LP4:H22	6:C:301:LP5:H372	1.87	0.56
1:B:550:SER:OG	4:B:802:NAG:H82	2.06	0.56
1:A:572:ASN:ND2	4:A:705:NAG:C1	2.70	0.55
2:C:127:PRO:CA	2:C:128:LYS:CB	2.87	0.53
2:D:122:GLU:N	6:D:301:LP5:HO4	2.07	0.53
1:A:288:ARG:NH1	2:C:99:ASP:OD1	2.43	0.52
1:A:608:THR:CB	1:A:609:PRO:CD	2.88	0.51
1:A:539:ASN:O	1:A:540:GLN:CB	2.59	0.50
2:D:124:ILE:CG2	2:D:125:LEU:N	2.76	0.48
5:D:300:LP4:H21	5:D:300:LP4:H35A	1.94	0.48
1:A:615:SER:OG	1:A:616:LEU:N	2.46	0.47
1:B:608:THR:CB	1:B:609:PRO:CD	2.92	0.47
1:A:264:ASP:N	1:A:264:ASP:OD2	2.48	0.47
1:A:337:ARG:NH1	2:C:101:ASP:OD1	2.48	0.46
2:C:126:PHE:CE1	6:C:301:LP5:H241	2.50	0.46
1:B:484:ASN:ND2	7:B:913:HOH:O	2.48	0.46
1:A:469:THR:O	1:A:495:ASN:ND2	2.50	0.45
1:A:418:GLY:N	1:A:420:GLU:OE2	2.50	0.44
1:B:616:LEU:C	1:B:618:LEU:N	2.71	0.44
2:C:119:PHE:CB	5:C:300:LP4:H31	2.47	0.44
5:C:300:LP4:H29A	5:C:300:LP4:H32	1.49	0.43
1:A:229:GLU:OE1	1:A:256:ARG:NH1	2.51	0.43
2:D:121:PHE:CD2	6:D:301:LP5:H292	2.54	0.42
1:B:208:ASP:OD2	2:D:106:ARG:NH1	2.53	0.42
1:B:603:GLN:OE1	1:B:603:GLN:N	2.53	0.42
1:A:266:ARG:O	1:A:267:ASN:CB	2.67	0.41
1:A:388:CYS:CA	1:A:389:CYS:CB	2.99	0.41
1:B:198:ARG:NH2	1:B:221:ALA:O	2.54	0.41
1:B:177:VAL:O	1:B:206:SER:N	2.54	0.41

There are no symmetry-related clashes.

5.3 Torsion angles

5.3.1 Protein backbone ⓘ

In the following table, the Percentiles column shows the percent Ramachandran outliers of the chain as a percentile score with respect to all X-ray entries followed by that with respect to entries of similar resolution. The Analysed column shows the number of residues for which the backbone conformation was analysed, and the total number of residues.

Mol	Chain	Analysed	Favoured	Allowed	Outliers	Percentiles	
1	A	592/606 (98%)	528 (89%)	60 (10%)	4 (1%)	30	62
1	B	592/606 (98%)	529 (89%)	60 (10%)	3 (0%)	38	70
2	C	133/144 (92%)	128 (96%)	5 (4%)	0	100	100
2	D	133/144 (92%)	129 (97%)	4 (3%)	0	100	100
All	All	1450/1500 (97%)	1314 (91%)	129 (9%)	7 (0%)	38	70

All (7) Ramachandran outliers are listed below:

Mol	Chain	Res	Type
1	B	621	ASN
1	A	267	ASN
1	A	624	THR
1	B	616	LEU
1	A	560	ILE
1	A	608	THR
1	B	608	THR

5.3.2 Protein sidechains ⓘ

In the following table, the Percentiles column shows the percent sidechain outliers of the chain as a percentile score with respect to all X-ray entries followed by that with respect to entries of similar resolution. The Analysed column shows the number of residues for which the sidechain conformation was analysed, and the total number of residues.

Mol	Chain	Analysed	Rotameric	Outliers	Percentiles	
1	A	555/564 (98%)	493 (89%)	62 (11%)	9	20
1	B	555/564 (98%)	502 (90%)	53 (10%)	12	28
2	C	122/131 (93%)	110 (90%)	12 (10%)	12	26
2	D	122/131 (93%)	117 (96%)	5 (4%)	41	74
All	All	1354/1390 (97%)	1222 (90%)	132 (10%)	12	27

All (132) residues with a non-rotameric sidechain are listed below:

Mol	Chain	Res	Type
1	A	38	GLN
1	A	68	LEU
1	A	69	LYS
1	A	76	PHE
1	A	78	GLU
1	A	124	LEU
1	A	137	LEU
1	A	139	SER
1	A	148	LEU
1	A	155	ASN
1	A	173	LEU
1	A	197	LEU
1	A	199	GLU
1	A	211	LEU
1	A	225	ILE
1	A	238	SER
1	A	249	LEU
1	A	254	VAL
1	A	276	MET
1	A	277	GLU
1	A	279	LEU
1	A	282	VAL
1	A	283	THR
1	A	292	THR
1	A	299	ILE
1	A	301	LYS
1	A	309	SER
1	A	334	SER
1	A	340	LEU
1	A	345	THR
1	A	347	ASP
1	A	360	LYS
1	A	378	LEU
1	A	384	SER
1	A	385	PHE
1	A	386	SER
1	A	389	CYS
1	A	397	ASN
1	A	398	SER
1	A	400	ARG
1	A	413	SER
1	A	415	ASN

Continued on next page...

Continued from previous page...

Mol	Chain	Res	Type
1	A	417	MET
1	A	420	GLU
1	A	422	LEU
1	A	458	LYS
1	A	466	LEU
1	A	485	THR
1	A	494	THR
1	A	513	VAL
1	A	516	THR
1	A	519	ARG
1	A	522	LEU
1	A	535	SER
1	A	547	LEU
1	A	558	LYS
1	A	571	PHE
1	A	592	LYS
1	A	601	VAL
1	A	616	LEU
1	A	617	VAL
1	A	618	LEU
2	C	31	ILE
2	C	39	HIS
2	C	40	LEU
2	C	44	ILE
2	C	55	ARG
2	C	57	THR
2	C	58	ASN
2	C	71	LEU
2	C	106	ARG
2	C	122	GLU
2	C	124	ILE
2	C	134	VAL
1	B	31	VAL
1	B	38	GLN
1	B	42	GLN
1	B	45	SER
1	B	53	SER
1	B	69	LYS
1	B	86	ARG
1	B	90	GLU
1	B	97	TRP
1	B	124	LEU

Continued on next page...

Continued from previous page...

Mol	Chain	Res	Type
1	B	137	LEU
1	B	148	LEU
1	B	154	LEU
1	B	155	ASN
1	B	181	LEU
1	B	197	LEU
1	B	207	LEU
1	B	244	THR
1	B	254	VAL
1	B	268	LEU
1	B	276	MET
1	B	279	LEU
1	B	282	VAL
1	B	288	ARG
1	B	299	ILE
1	B	317	SER
1	B	334	SER
1	B	340	LEU
1	B	345	THR
1	B	360	LYS
1	B	368	VAL
1	B	378	LEU
1	B	384	SER
1	B	385	PHE
1	B	386	SER
1	B	389	CYS
1	B	392	SER
1	B	400	ARG
1	B	420	GLU
1	B	433	LYS
1	B	435	VAL
1	B	437	GLU
1	B	456	ASN
1	B	496	LEU
1	B	511	TRP
1	B	535	SER
1	B	571	PHE
1	B	596	GLN
1	B	601	VAL
1	B	605	THR
1	B	617	VAL
1	B	618	LEU

Continued on next page...

Continued from previous page...

Mol	Chain	Res	Type
1	B	620	PHE
2	D	33	SER
2	D	44	ILE
2	D	120	SER
2	D	124	ILE
2	D	134	VAL

Some sidechains can be flipped to improve hydrogen bonding and reduce clashes. There are no such sidechains identified.

5.3.3 RNA ⓘ

There are no RNA chains in this entry.

5.4 Non-standard residues in protein, DNA, RNA chains ⓘ

There are no non-standard protein/DNA/RNA residues in this entry.

5.5 Carbohydrates ⓘ

6 carbohydrates are modelled in this entry.

In the following table, the Counts columns list the number of bonds (or angles) for which Mogul statistics could be retrieved, the number of bonds (or angles) that are observed in the model and the number of bonds (or angles) that are defined in the chemical component dictionary. The Link column lists molecule types, if any, to which the group is linked. The Z score for a bond length (or angle) is the number of standard deviations the observed value is removed from the expected value. A bond length (or angle) with $|Z| > 2$ is considered an outlier worth inspection. RMSZ is the root-mean-square of all Z scores of the bond lengths (or angles).

Mol	Type	Chain	Res	Link	Bond lengths			Bond angles		
					Counts	RMSZ	$\# Z > 2$	Counts	RMSZ	$\# Z > 2$
3	NAG	A	701	1,3	12,14,15	0.58	0	15,19,21	1.57	3 (20%)
3	NAG	A	702	3	12,14,15	0.36	0	15,19,21	1.51	1 (6%)
3	NAG	A	703	1,3	12,14,15	0.44	0	15,19,21	1.98	3 (20%)
3	NAG	A	704	3	12,14,15	0.60	0	15,19,21	1.31	2 (13%)
3	NAG	B	800	1,3	12,14,15	0.57	0	15,19,21	1.66	3 (20%)
3	NAG	B	801	3	12,14,15	0.64	0	15,19,21	2.40	3 (20%)

In the following table, the Chirals column lists the number of chiral outliers, the number of chiral

centers analysed, the number of these observed in the model and the number defined in the chemical component dictionary. Similar counts are reported in the Torsion and Rings columns. '-' means no outliers of that kind were identified.

Mol	Type	Chain	Res	Link	Chirals	Torsions	Rings
3	NAG	A	701	1,3	-	0/6/23/26	0/1/1/1
3	NAG	A	702	3	-	0/6/23/26	0/1/1/1
3	NAG	A	703	1,3	-	0/6/23/26	0/1/1/1
3	NAG	A	704	3	-	0/6/23/26	0/1/1/1
3	NAG	B	800	1,3	-	0/6/23/26	0/1/1/1
3	NAG	B	801	3	-	0/6/23/26	0/1/1/1

There are no bond length outliers.

All (15) bond angle outliers are listed below:

Mol	Chain	Res	Type	Atoms	Z	Observed(°)	Ideal(°)
3	B	801	NAG	O5-C5-C6	6.73	114.05	106.98
3	A	703	NAG	O5-C5-C4	4.72	116.64	110.65
3	A	702	NAG	O5-C5-C6	4.42	111.62	106.98
3	B	801	NAG	C3-C4-C5	-4.14	102.80	110.20
3	B	800	NAG	O5-C5-C4	4.13	115.89	110.65
3	B	801	NAG	O5-C5-C4	-3.81	105.82	110.65
3	A	701	NAG	O5-C5-C4	3.76	115.43	110.65
3	A	703	NAG	C3-C2-N2	-3.53	106.38	111.76
3	A	703	NAG	C6-C5-C4	-3.50	104.55	113.00
3	B	800	NAG	C3-C2-N2	-2.82	107.47	111.76
3	A	704	NAG	C3-C2-N2	-2.79	107.51	111.76
3	B	800	NAG	C6-C5-C4	-2.78	106.27	113.00
3	A	701	NAG	C3-C2-N2	2.31	115.27	111.76
3	A	704	NAG	O3-C3-C4	-2.18	105.46	110.35
3	A	701	NAG	C3-C4-C5	2.07	113.89	110.20

There are no chirality outliers.

There are no torsion outliers.

There are no ring outliers.

5.6 Ligand geometry ⓘ

6 ligands are modelled in this entry.

In the following table, the Counts columns list the number of bonds (or angles) for which Mogul statistics could be retrieved, the number of bonds (or angles) that are observed in the model and the number of bonds (or angles) that are defined in the chemical component dictionary. The Link

column lists molecule types, if any, to which the group is linked. The Z score for a bond length (or angle) is the number of standard deviations the observed value is removed from the expected value. A bond length (or angle) with $|Z| > 2$ is considered an outlier worth inspection. RMSZ is the root-mean-square of all Z scores of the bond lengths (or angles).

Mol	Type	Chain	Res	Link	Bond lengths			Bond angles		
					Counts	RMSZ	$\# Z > 2$	Counts	RMSZ	$\# Z > 2$
4	NAG	A	705	-	12,14,15	0.57	0	15,19,21	1.21	2 (13%)
4	NAG	B	802	1	12,14,15	0.45	0	15,19,21	1.37	2 (13%)
5	LP4	C	300	6	43,45,48	0.96	3 (6%)	52,56,60	1.31	5 (9%)
6	LP5	C	301	5	48,48,48	0.85	3 (6%)	60,60,60	1.29	5 (8%)
5	LP4	D	300	6	43,45,48	0.87	2 (4%)	52,56,60	1.07	2 (3%)
6	LP5	D	301	5	48,48,48	0.86	2 (4%)	60,60,60	1.21	3 (5%)

In the following table, the Chirals column lists the number of chiral outliers, the number of chiral centers analysed, the number of these observed in the model and the number defined in the chemical component dictionary. Similar counts are reported in the Torsion and Rings columns. '-' means no outliers of that kind were identified.

Mol	Type	Chain	Res	Link	Chirals	Torsions	Rings
4	NAG	A	705	-	-	0/6/23/26	0/1/1/1
4	NAG	B	802	1	-	0/6/23/26	0/1/1/1
5	LP4	C	300	6	-	0/43/60/65	0/1/1/1
6	LP5	C	301	5	-	0/45/65/65	0/1/1/1
5	LP4	D	300	6	-	0/43/60/65	0/1/1/1
6	LP5	D	301	5	-	0/45/65/65	0/1/1/1

All (10) bond length outliers are listed below:

Mol	Chain	Res	Type	Atoms	Z	Observed(Å)	Ideal(Å)
5	C	300	LP4	C25-C24	-4.11	1.53	1.55
6	D	301	LP5	P45-O47	3.82	1.64	1.51
6	C	301	LP5	P45-O47	3.44	1.62	1.51
5	D	300	LP4	C25-C24	-2.66	1.54	1.55
6	C	301	LP5	O3-C3	-2.66	1.40	1.44
6	C	301	LP5	P45-O46	2.30	1.63	1.54
5	C	300	LP4	C8-C7	2.12	1.55	1.51
6	D	301	LP5	P45-O46	2.09	1.62	1.54
5	D	300	LP4	P45-O47	2.03	1.62	1.54
5	C	300	LP4	P45-O47	2.01	1.62	1.54

All (19) bond angle outliers are listed below:

Mol	Chain	Res	Type	Atoms	Z	Observed(°)	Ideal(°)
6	D	301	LP5	C3-O3-C28	-5.30	109.43	117.92
6	C	301	LP5	O5-C1-O1	-5.07	104.73	111.36
5	C	300	LP4	O5-C5-C6	5.03	112.26	106.98
5	D	300	LP4	C3-O3-C28	-4.17	111.24	117.92
4	B	802	NAG	O5-C5-C6	3.72	110.89	106.98
5	C	300	LP4	O5-C5-C4	-3.36	106.25	110.48
5	C	300	LP4	P45-O4-C4	-3.23	115.16	121.96
5	C	300	LP4	O46-P45-O48	2.74	119.39	110.44
6	C	301	LP5	C30-C29-C28	-2.72	107.41	112.90
5	D	300	LP4	O46-P45-O48	2.63	119.02	110.44
4	A	705	NAG	O7-C7-C8	-2.54	117.09	122.04
6	C	301	LP5	C2-N2-C7	2.41	125.60	121.86
6	D	301	LP5	C3-C2-N2	-2.40	106.80	110.99
4	B	802	NAG	C3-C2-N2	-2.39	108.12	111.76
6	C	301	LP5	C3-O3-C28	-2.38	114.11	117.92
4	A	705	NAG	O5-C5-C6	2.14	109.23	106.98
6	C	301	LP5	C8-C7-N2	-2.12	113.54	116.25
5	C	300	LP4	O4-C4-C5	2.05	112.60	108.45
6	D	301	LP5	O46-P45-O48	2.02	115.47	107.61

There are no chirality outliers.

There are no torsion outliers.

There are no ring outliers.

5.7 Other polymers ⓘ

There are no such residues in this entry.

5.8 Polymer linkage issues

There are no chain breaks in this entry.

6 Fit of model and data ⓘ

6.1 Protein, DNA and RNA chains ⓘ

In the following table, the column labelled ‘#RSRZ> 2’ contains the number (and percentage) of RSRZ outliers, followed by percent RSRZ outliers for the chain as percentile scores relative to all X-ray entries and entries of similar resolution. The OWAB column contains the minimum, median, 95th percentile and maximum values of the occupancy-weighted average B-factor per residue. The column labelled ‘Q< 0.9’ lists the number of (and percentage) of residues with an average occupancy less than 0.9.

Mol	Chain	Analysed	<RSRZ>	#RSRZ>2		OWAB(Å ²)	Q<0.9
1	A	596/606 (98%)	-0.03	21 (3%)	42 47	23, 43, 90, 127	1 (0%)
1	B	596/606 (98%)	0.14	31 (5%)	26 29	27, 56, 103, 136	1 (0%)
2	C	135/144 (93%)	0.16	8 (5%)	22 23	35, 51, 72, 85	1 (0%)
2	D	135/144 (93%)	0.10	3 (2%)	59 65	42, 57, 76, 96	2 (1%)
All	All	1462/1500 (97%)	0.07	63 (4%)	34 38	23, 50, 94, 136	5 (0%)

All (63) RSRZ outliers are listed below:

Mol	Chain	Res	Type	RSRZ
1	B	623	SER	6.7
1	B	624	THR	5.2
1	B	270	ILE	5.1
1	A	49	ASP	4.8
1	B	147	GLN	4.8
1	B	98	HIS	4.5
1	B	35	ILE	4.3
1	B	49	ASP	4.3
1	B	73	PHE	4.0
1	A	323	ASP	3.9
1	A	29	ILE	3.9
1	B	625	CYS	3.9
2	C	24	PHE	3.7
1	B	67	ILE	3.7
1	B	149	ILE	3.7
1	A	98	HIS	3.6
2	D	23	TRP	3.6
1	A	76	PHE	3.4
1	B	47	VAL	3.3
2	D	24	PHE	3.1
1	B	620	PHE	3.1

Continued on next page...

Continued from previous page...

Mol	Chain	Res	Type	RSRZ
2	D	39	HIS	3.1
1	B	148	LEU	2.9
1	B	224	GLY	2.9
1	A	609	PRO	2.8
2	C	31	ILE	2.7
1	B	50	ASP	2.7
2	C	153	ILE	2.7
1	B	33	PRO	2.7
1	B	253	HIS	2.6
1	B	56	LYS	2.6
1	B	55	THR	2.6
1	B	53	SER	2.5
2	C	132	ARG	2.5
2	C	26	ASN	2.4
1	B	69	LYS	2.4
1	A	53	SER	2.4
1	A	625	CYS	2.3
1	B	174	THR	2.3
1	A	28	CYS	2.3
1	A	592	LYS	2.2
2	C	154	ILE	2.2
1	A	35	ILE	2.2
1	A	301	LYS	2.2
2	C	39	HIS	2.2
1	B	76	PHE	2.2
1	A	52	PRO	2.2
1	B	95	LYS	2.2
1	B	240	ASN	2.2
1	A	48	PRO	2.1
1	B	181	LEU	2.1
1	B	215	ASP	2.1
1	A	101	HIS	2.1
1	B	146	GLY	2.1
1	A	618	LEU	2.1
1	A	75	ASN	2.1
1	A	562	GLN	2.0
1	B	93	GLU	2.0
1	A	37	TYR	2.0
1	B	34	ASN	2.0
2	C	32	ILE	2.0
1	A	601	VAL	2.0
1	A	34	ASN	2.0

6.2 Non-standard residues in protein, DNA, RNA chains ⓘ

There are no non-standard protein/DNA/RNA residues in this entry.

6.3 Carbohydrates ⓘ

In the following table, the Atoms column lists the number of modelled atoms in the group and the number defined in the chemical component dictionary. LLDF column lists the quality of electron density of the group with respect to its neighbouring residues in protein, DNA or RNA chains. The B-factors column lists the minimum, median, 95th percentile and maximum values of B factors of atoms in the group. The column labelled 'Q< 0.9' lists the number of atoms with occupancy less than 0.9.

Mol	Type	Chain	Res	Atoms	RSR	LLDF	B-factors(Å ²)	Q<0.9
3	NAG	A	702	14/15	0.15	6.12	41,56,58,61	0
3	NAG	A	703	14/15	0.18	2.43	39,43,49,50	0
3	NAG	A	701	14/15	0.16	1.44	46,48,52,53	0
3	NAG	A	704	14/15	0.16	1.43	54,58,72,83	0
3	NAG	B	801	14/15	0.17	0.62	46,58,63,67	0
3	NAG	B	800	14/15	0.12	-0.62	35,38,43,48	0

6.4 Ligands ⓘ

In the following table, the Atoms column lists the number of modelled atoms in the group and the number defined in the chemical component dictionary. LLDF column lists the quality of electron density of the group with respect to its neighbouring residues in protein, DNA or RNA chains. The B-factors column lists the minimum, median, 95th percentile and maximum values of B factors of atoms in the group. The column labelled 'Q< 0.9' lists the number of atoms with occupancy less than 0.9.

Mol	Type	Chain	Res	Atoms	RSR	LLDF	B-factors(Å ²)	Q<0.9
4	NAG	B	802	14/15	0.26	2.84	46,50,55,59	0
5	LP4	C	300	45/48	0.21	1.73	37,52,58,63	0
6	LP5	D	301	48/48	0.23	1.07	63,70,78,89	0
4	NAG	A	705	14/15	0.21	0.86	50,66,86,87	0
6	LP5	C	301	48/48	0.23	0.61	43,56,77,82	0
5	LP4	D	300	45/48	0.19	0.41	54,67,73,77	0

6.5 Other polymers ⓘ

There are no such residues in this entry.