



# Full wwPDB X-ray Structure Validation Report

Feb 27, 2014 – 12:57 PM GMT

PDB ID : 3VQV  
Title : Crystal structure of the catalytic domain of pyrrolysyl-tRNA synthetase in complex with AMPPNP (re-refined)  
Authors : Yanagisawa, T.; Sumida, T.; Ishii, R.; Yokoyama, S.; RIKEN Structural Genomics/Proteomics Initiative (RSGI)  
Deposited on : 2012-04-01  
Resolution : 1.90 Å(reported)

This is a full wwPDB validation report for a publicly released PDB entry.  
We welcome your comments at [validation@mail.wwpdb.org](mailto:validation@mail.wwpdb.org)  
A user guide is available at <http://wwpdb.org/ValidationPDFNotes.html>

---

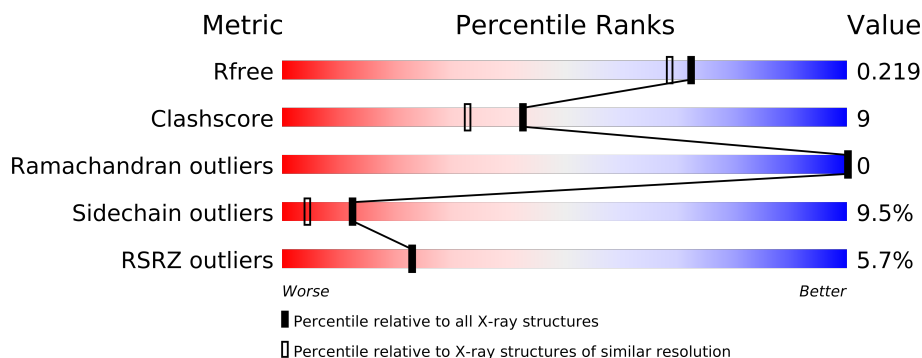
The following versions of software and data (see [references](#)) were used in the production of this report:

MolProbity : 4.02b-467  
Mogul : 1.15 2013  
Xtriage (Phenix) : dev-1323  
EDS : stable22639  
Percentile statistics : 21963  
Refmac : 5.8.0049  
CCP4 : 6.3.0 (Settle)  
Ideal geometry (proteins) : Engh & Huber (2001)  
Ideal geometry (DNA, RNA) : Parkinson et. al. (1996)  
Validation Pipeline (wwPDB-VP) : stable22683

# 1 Overall quality at a glance


The reported resolution of this entry is 1.90 Å.

Percentile scores (ranging between 0-100) for global validation metrics of the entry are shown in the following graphic. The table shows the number of entries on which the scores are based.



Metric	Whole archive (#Entries)	Similar resolution (#Entries, resolution range(Å))
$R_{free}$	66092	3684 (1.90-1.90)
Clashscore	79885	4465 (1.90-1.90)
Ramachandran outliers	78287	4413 (1.90-1.90)
Sidechain outliers	78261	4414 (1.90-1.90)
RSRZ outliers	66119	3686 (1.90-1.90)

The table below summarises the geometric issues observed across the polymeric chains and their fit to the electron density. The red, orange, yellow and green segments on the lower bar indicate the fraction of residues that contain outliers for  $\geq 3$ , 2, 1 and 0 types of geometric quality criteria. The upper red bar (where present) indicates the fraction of residues that have poor fit to the electron density.

Mol	Chain	Length	Quality of chain
1	A	291	

## 2 Entry composition i

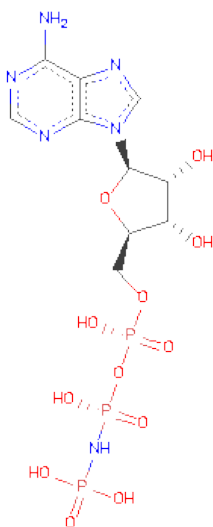
There are 4 unique types of molecules in this entry. The entry contains 2377 atoms, of which 0 are hydrogen and 0 are deuterium.

In the tables below, the ZeroOcc column contains the number of atoms modelled with zero occupancy, the AltConf column contains the number of residues with at least one atom in alternate conformation and the Trace column contains the number of residues modelled with at most 2 atoms.

- Molecule 1 is a protein called Pyrrolysine-tRNA ligase.

Mol	Chain	Residues	Atoms					ZeroOcc	AltConf	Trace
			Total	C	N	O	S			
1	A	258	2098	1333	362	394	9	0	1	0

- Molecule 2 is PHOSPHOAMINOPHOSPHONICACID-ADENYLATE ESTER (three-letter code: ANP) (formula:  $C_{10}H_{17}N_6O_{12}P_3$ ).



Mol	Chain	Residues	Atoms					ZeroOcc	AltConf
			Total	C	N	O	P		
2	A	1	31	10	6	12	3	0	0

- Molecule 3 is MAGNESIUM ION (three-letter code: MG) (formula: Mg).

Mol	Chain	Residues	Atoms		ZeroOcc	AltConf
3	A	2	Total	Mg	0	0
			2	2		

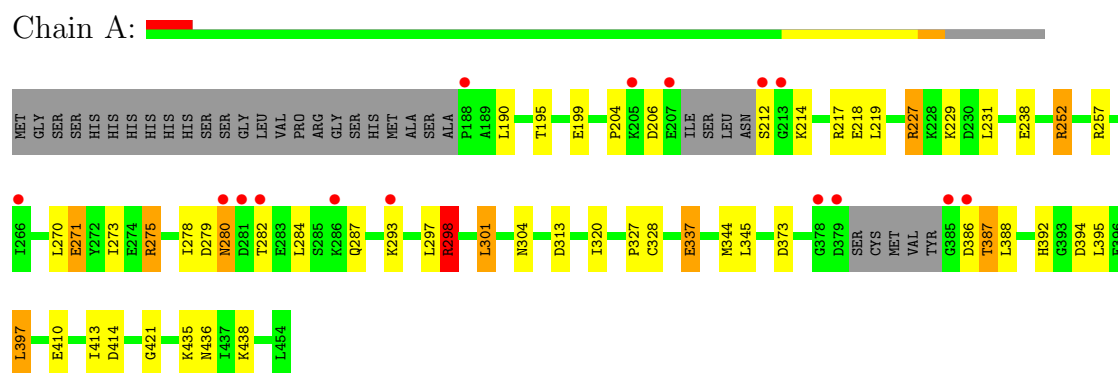
- Molecule 4 is water.

Mol	Chain	Residues	Atoms		ZeroOcc	AltConf
4	A	246	Total 246	O 246	0	0

### 3 Residue-property plots i

These plots are drawn for all protein, RNA and DNA chains in the entry. The first graphic for a chain summarises the proportions of errors displayed in the second graphic. The second graphic shows the sequence view annotated by issues in geometry and electron density. Residues are color-coded according to the number of geometric quality criteria for which they contain at least one outlier: green = 0, yellow = 1, orange = 2 and red = 3 or more. A red dot above a residue indicates a poor fit to the electron density ( $RSRZ > 2$ ). Stretches of 2 or more consecutive residues without any outlier are shown as a green connector. Residues present in the sample, but not in the model, are shown in grey.

- Molecule 1: Pyrrolysine-tRNA ligase



## 4 Data and refinement statistics

Property	Value	Source
Space group	P 64	Depositor
Cell constants a, b, c, $\alpha$ , $\beta$ , $\gamma$	104.88Å 104.88Å 70.43Å 90.00° 90.00° 120.00°	Depositor
Resolution (Å)	42.07 – 1.90 42.06 – 1.90	Depositor EDS
% Data completeness (in resolution range)	100.0 (42.07-1.90) 99.8 (42.06-1.90)	Depositor EDS
$R_{merge}$	(Not available)	Depositor
$R_{sym}$	0.09	Depositor
$\langle I/\sigma(I) \rangle$ <sup>1</sup>	1.77 (at 1.89Å)	Xtriage
Refinement program	REFMAC 5.2.0019	Depositor
R, $R_{free}$	0.187 , 0.219 0.187 , 0.219	Depositor DCC
$R_{free}$ test set	1750 reflections (5.30%)	DCC
Wilson B-factor (Å <sup>2</sup> )	31.0	Xtriage
Anisotropy	0.182	Xtriage
Bulk solvent $k_{sol}$ (e/Å <sup>3</sup> ), $B_{sol}$ (Å <sup>2</sup> )	0.34 , 53.7	EDS
Estimated twinning fraction	0.042 for h,-h-k,-l	Xtriage
L-test for twinning	$\langle  L  \rangle = 0.49$ , $\langle L^2 \rangle = 0.32$	Xtriage
Outliers	0 of 34791 reflections	Xtriage
$F_o, F_c$ correlation	0.97	EDS
Total number of atoms	2377	wwPDB-VP
Average B, all atoms (Å <sup>2</sup> )	38.0	wwPDB-VP

Xtriage's analysis on translational NCS is as follows: *The largest off-origin peak in the Patterson function is 6.58% of the height of the origin peak. No significant pseudotranslation is detected.*

<sup>1</sup>Intensities estimated from amplitudes.

## 5 Model quality

### 5.1 Standard geometry

Bond lengths and bond angles in the following residue types are not validated in this section: MG, ANP

The Z score for a bond length (or angle) is the number of standard deviations the observed value is removed from the expected value. A bond length (or angle) with  $|Z| > 5$  is considered an outlier worth inspection. RMSZ is the root-mean-square of all Z scores of the bond lengths (or angles).

Mol	Chain	Bond lengths		Bond angles	
		RMSZ	$\# Z  > 5$	RMSZ	$\# Z  > 5$
1	A	0.77	0/2142	0.87	7/2877 (0.2%)

There are no bond length outliers.

All (7) bond angle outliers are listed below:

Mol	Chain	Res	Type	Atoms	Z	Observed(°)	Ideal(°)
1	A	298	ARG	NE-CZ-NH1	10.98	125.79	120.30
1	A	298	ARG	NE-CZ-NH2	-8.62	115.99	120.30
1	A	227	ARG	NE-CZ-NH2	-8.49	116.05	120.30
1	A	227	ARG	NE-CZ-NH1	5.77	123.18	120.30
1	A	344	MET	CG-SD-CE	-5.21	91.86	100.20
1	A	227	ARG	CG-CD-NE	-5.18	100.92	111.80
1	A	397	LEU	CB-CG-CD1	5.10	119.67	111.00

There are no chirality outliers.

There are no planarity outliers.

### 5.2 Close contacts

In the following table, the Non-H and H(model) columns list the number of non-hydrogen atoms and hydrogen atoms in the chain respectively. The H(added) column lists the number of hydrogens added by MolProbity. The Clashes column lists the number of clashes within the asymmetric unit, and the number in parentheses is this value normalized per 1000 atoms of the molecule in the chain. The Symm-Clashes column gives symmetry related clashes, in the same way as for the Clashes column.

Mol	Chain	Non-H	H(model)	H(added)	Clashes	Symm-Clashes
1	A	2098	0	2103	38	0
2	A	31	0	13	0	0

*Continued on next page...*

*Continued from previous page...*

Mol	Chain	Non-H	H(model)	H(added)	Clashes	Symm-Clashes
3	A	2	0	0	0	0
4	A	246	0	0	10	0
All	All	2377	0	2116	38	0

Clashscore is defined as the number of clashes calculated for the entry per 1000 atoms (including hydrogens) of the entry. The overall clashscore for this entry is 9.

All (38) close contacts within the same asymmetric unit are listed below.

Atom-1	Atom-2	Distance(Å)	Clash(Å)
1:A:414:ASP:N	4:A:845:HOH:O	1.77	1.00
1:A:279:ASP:O	1:A:282:THR:HG22	1.64	0.97
1:A:436:ASN:HD22	1:A:438:LYS:H	1.32	0.78
1:A:217:ARG:HG2	4:A:757:HOH:O	1.89	0.71
1:A:413:ILE:O	4:A:709:HOH:O	2.09	0.70
1:A:206:ASP:OD2	1:A:227:ARG:NH2	2.26	0.69
1:A:298:ARG:HD2	1:A:327:PRO:O	1.97	0.65
1:A:195:THR:O	1:A:199:GLU:HG3	1.98	0.63
1:A:373:ASP:O	1:A:392:HIS:HD2	1.82	0.62
1:A:252:ARG:HH11	1:A:252:ARG:HG3	1.64	0.62
1:A:212:SER:HB3	4:A:837:HOH:O	1.99	0.61
1:A:337:GLU:HG3	1:A:395:LEU:HD13	1.83	0.60
1:A:436:ASN:ND2	1:A:438:LYS:H	2.00	0.60
1:A:337:GLU:CG	1:A:395:LEU:HD13	2.34	0.58
1:A:413:ILE:CA	4:A:845:HOH:O	2.51	0.58
1:A:204:PRO:HD3	4:A:827:HOH:O	2.05	0.56
1:A:387:THR:HG22	4:A:798:HOH:O	2.09	0.53
1:A:313:ASP:HA	1:A:320:ILE:HD11	1.91	0.52
1:A:436:ASN:HD21	1:A:438:LYS:HG3	1.74	0.52
1:A:278:ILE:HG23	1:A:282:THR:HG21	1.92	0.51
1:A:337:GLU:HG3	1:A:395:LEU:CD1	2.40	0.51
1:A:275:ARG:HG3	1:A:410:GLU:HG2	1.97	0.47
1:A:284:LEU:HA	1:A:287:GLN:HE21	1.80	0.47
1:A:227:ARG:HA	1:A:227:ARG:HD3	1.66	0.46
1:A:301:LEU:HD13	1:A:328:CYS:SG	2.55	0.46
1:A:436:ASN:ND2	1:A:438:LYS:HG3	2.31	0.45
1:A:214:LYS:HD3	1:A:218:GLU:OE1	2.17	0.45
1:A:304:ASN:ND2	4:A:640:HOH:O	2.44	0.44
1:A:275:ARG:HG3	1:A:410:GLU:CG	2.48	0.44
1:A:271:GLU:H	1:A:271:GLU:CD	2.20	0.44
1:A:392:HIS:HE1	4:A:841:HOH:O	2.00	0.43
1:A:252:ARG:CG	1:A:252:ARG:HH11	2.30	0.43
1:A:345:LEU:O	1:A:421:GLY:HA2	2.19	0.43

*Continued on next page...*



Continued from previous page...

Atom-1	Atom-2	Distance(Å)	Clash(Å)
1:A:271:GLU:OE2	1:A:271:GLU:N	2.51	0.42
1:A:280:ASN:OD1	1:A:280:ASN:N	2.52	0.42
1:A:217:ARG:HA	1:A:217:ARG:HD2	1.97	0.41
1:A:238:GLU:HG3	4:A:630:HOH:O	2.19	0.41
1:A:313:ASP:HA	1:A:320:ILE:CD1	2.50	0.40

There are no symmetry-related clashes.

## 5.3 Torsion angles

### 5.3.1 Protein backbone ⓘ

In the following table, the Percentiles column shows the percent Ramachandran outliers of the chain as a percentile score with respect to all X-ray entries followed by that with respect to entries of similar resolution. The Analysed column shows the number of residues for which the backbone conformation was analysed, and the total number of residues.

Mol	Chain	Analysed	Favoured	Allowed	Outliers	Percentiles	
1	A	253/291 (87%)	245 (97%)	8 (3%)	0	100	100

There are no Ramachandran outliers to report.

### 5.3.2 Protein sidechains ⓘ

In the following table, the Percentiles column shows the percent sidechain outliers of the chain as a percentile score with respect to all X-ray entries followed by that with respect to entries of similar resolution. The Analysed column shows the number of residues for which the sidechain conformation was analysed, and the total number of residues.

Mol	Chain	Analysed	Rotameric	Outliers	Percentiles	
1	A	232/259 (90%)	210 (90%)	22 (10%)	12	4

All (22) residues with a non-rotameric sidechain are listed below:

Mol	Chain	Res	Type
1	A	190	LEU
1	A	219	LEU
1	A	229	LYS
1	A	231	LEU
1	A	252	ARG

Continued on next page...

*Continued from previous page...*

Mol	Chain	Res	Type
1	A	257	ARG
1	A	270	LEU
1	A	271	GLU
1	A	273	ILE
1	A	275	ARG
1	A	280	ASN
1	A	293	LYS
1	A	297	LEU
1	A	298	ARG
1	A	301	LEU
1	A	337	GLU
1	A	386	ASP
1	A	387	THR
1	A	388	LEU
1	A	394	ASP
1	A	397	LEU
1	A	435	LYS

Some sidechains can be flipped to improve hydrogen bonding and reduce clashes. All (6) such sidechains are listed below:

Mol	Chain	Res	Type
1	A	287	GLN
1	A	349	GLN
1	A	358	ASN
1	A	368	ASN
1	A	392	HIS
1	A	436	ASN

### 5.3.3 RNA ⓘ

There are no RNA chains in this entry.

## 5.4 Non-standard residues in protein, DNA, RNA chains ⓘ

There are no non-standard protein/DNA/RNA residues in this entry.

## 5.5 Carbohydrates ⓘ

There are no carbohydrates in this entry.

## 5.6 Ligand geometry ⓘ

Of 3 ligands modelled in this entry, 2 are monoatomic - leaving 1 for Mogul analysis.

In the following table, the Counts columns list the number of bonds (or angles) for which Mogul statistics could be retrieved, the number of bonds (or angles) that are observed in the model and the number of bonds (or angles) that are defined in the chemical component dictionary. The Link column lists molecule types, if any, to which the group is linked. The Z score for a bond length (or angle) is the number of standard deviations the observed value is removed from the expected value. A bond length (or angle) with  $|Z| > 2$  is considered an outlier worth inspection. RMSZ is the root-mean-square of all Z scores of the bond lengths (or angles).

Mol	Type	Chain	Res	Link	Bond lengths			Bond angles		
					Counts	RMSZ	$\# Z  > 2$	Counts	RMSZ	$\# Z  > 2$
2	ANP	A	501	3	33,33,33	4.42	10 (30%)	51,52,52	2.84	14 (27%)

In the following table, the Chirals column lists the number of chiral outliers, the number of chiral centers analysed, the number of these observed in the model and the number defined in the chemical component dictionary. Similar counts are reported in the Torsion and Rings columns. '-' means no outliers of that kind were identified.

Mol	Type	Chain	Res	Link	Chirals	Torsions	Rings
2	ANP	A	501	3	-	0/18/38/38	0/1/3/3

All (10) bond length outliers are listed below:

Mol	Chain	Res	Type	Atoms	Z	Observed(Å)	Ideal(Å)
2	A	501	ANP	PG-N3B	17.88	1.79	1.64
2	A	501	ANP	PG-O1G	11.44	1.60	1.46
2	A	501	ANP	PB-N3B	8.30	1.71	1.64
2	A	501	ANP	O4'-C1'	5.08	1.49	1.41
2	A	501	ANP	C2'-C1'	-4.89	1.46	1.53
2	A	501	ANP	C2-N3	4.67	1.41	1.32
2	A	501	ANP	C2-N1	3.52	1.40	1.33
2	A	501	ANP	PG-O3G	2.98	1.64	1.55
2	A	501	ANP	PB-O2B	-2.26	1.48	1.55
2	A	501	ANP	C5-C4	-2.08	1.35	1.40

All (14) bond angle outliers are listed below:

Mol	Chain	Res	Type	Atoms	Z	Observed(°)	Ideal(°)
2	A	501	ANP	N3-C2-N1	-14.39	116.68	128.71
2	A	501	ANP	PB-N3B-PG	-8.82	115.23	130.07
2	A	501	ANP	O3G-PG-O1G	-3.69	104.12	113.60
2	A	501	ANP	O2B-PB-O1B	3.67	118.36	109.89

*Continued on next page...*

*Continued from previous page...*

Mol	Chain	Res	Type	Atoms	Z	Observed(°)	Ideal(°)
2	A	501	ANP	N3-C4-N9	3.11	131.05	125.43
2	A	501	ANP	O2B-PB-N3B	2.95	114.61	106.61
2	A	501	ANP	O2G-PG-N3B	2.77	114.14	106.61
2	A	501	ANP	O3A-PB-N3B	-2.65	99.25	106.59
2	A	501	ANP	N7-C8-N9	-2.31	107.83	114.36
2	A	501	ANP	O1G-PG-N3B	-2.24	108.45	111.83
2	A	501	ANP	C4'-O4'-C1'	-2.18	107.39	109.75
2	A	501	ANP	C5-C4-N3	-2.15	121.01	125.70
2	A	501	ANP	C4-C5-N7	-2.12	107.70	109.52
2	A	501	ANP	C2-N3-C4	2.01	119.73	114.01

There are no chirality outliers.

There are no torsion outliers.

There are no ring outliers.

## 5.7 Other polymers ⓘ

There are no such residues in this entry.

## 5.8 Polymer linkage issues

There are no chain breaks in this entry.

## 6 Fit of model and data ⓘ

### 6.1 Protein, DNA and RNA chains ⓘ

In the following table, the column labelled ‘#RSRZ> 2’ contains the number (and percentage) of RSRZ outliers, followed by percent RSRZ outliers for the chain as percentile scores relative to all X-ray entries and entries of similar resolution. The OWAB column contains the minimum, median, 95<sup>th</sup> percentile and maximum values of the occupancy-weighted average B-factor per residue. The column labelled ‘Q< 0.9’ lists the number of (and percentage) of residues with an average occupancy less than 0.9.

Mol	Chain	Analysed	<RSRZ>	#RSRZ>2		OWAB(Å <sup>2</sup> )	Q<0.9
1	A	258/291 (88%)	-0.06	15 (5%)	22 22	22, 35, 63, 83	0

All (15) RSRZ outliers are listed below:

Mol	Chain	Res	Type	RSRZ
1	A	281	ASP	4.6
1	A	379	ASP	3.8
1	A	213	GLY	3.8
1	A	188	PRO	3.1
1	A	212	SER	3.0
1	A	282	THR	3.0
1	A	205	LYS	2.6
1	A	280	ASN	2.6
1	A	378	GLY	2.4
1	A	293	LYS	2.4
1	A	385	GLY	2.4
1	A	207	GLU	2.2
1	A	266	ILE	2.2
1	A	286	LYS	2.0
1	A	386	ASP	2.0

### 6.2 Non-standard residues in protein, DNA, RNA chains ⓘ

There are no non-standard protein/DNA/RNA residues in this entry.

### 6.3 Carbohydrates ⓘ

There are no carbohydrates in this entry.

## 6.4 Ligands

In the following table, the Atoms column lists the number of modelled atoms in the group and the number defined in the chemical component dictionary. LLDF column lists the quality of electron density of the group with respect to its neighbouring residues in protein, DNA or RNA chains. The B-factors column lists the minimum, median, 95<sup>th</sup> percentile and maximum values of B factors of atoms in the group. The column labelled 'Q< 0.9' lists the number of atoms with occupancy less than 0.9.

Mol	Type	Chain	Res	Atoms	RSR	LLDF	B-factors(Å <sup>2</sup> )	Q<0.9
2	ANP	A	501	31/31	0.06	-0.82	29,31,37,38	0
3	MG	A	502	1/1	0.03	-0.92	36,36,36,36	0
3	MG	A	503	1/1	0.04	-2.16	45,45,45,45	0

## 6.5 Other polymers

There are no such residues in this entry.