



wwPDB X-ray Structure Validation Summary Report i

Feb 28, 2014 – 12:37 PM GMT

PDB ID : 3VQX
Title : Crystal structure of the catalytic domain of pyrrolysyl-tRNA synthetase in triclinic crystal form
Authors : Yanagisawa, T.; Sumida, T.; Ishii, R.; Yokoyama, S.; RIKEN Structural Genomics/Proteomics Initiative (RSGI)
Deposited on : 2012-04-02
Resolution : 2.30 Å(reported)

This is a wwPDB validation summary report for a publicly released PDB entry.
We welcome your comments at validation@mail.wwpdb.org
A user guide is available at <http://wwpdb.org/ValidationPDFNotes.html>

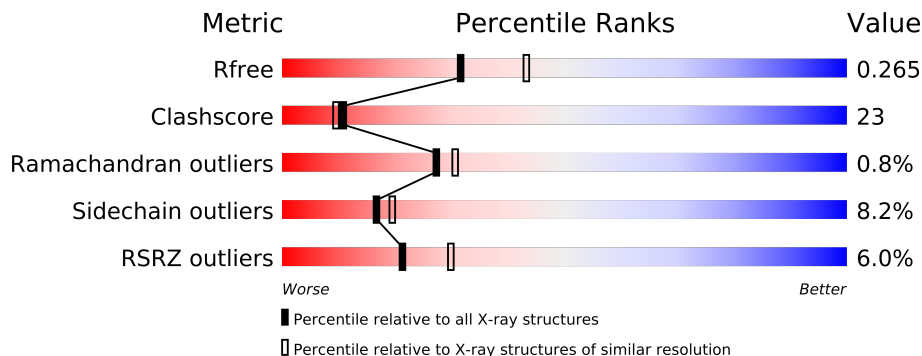
The following versions of software and data (see [references](#)) were used in the production of this report:

MolProbity	:	4.02b-467
Mogul	:	1.15 2013
Xtriage (Phenix)	:	dev-1323
EDS	:	stable22639
Percentile statistics	:	21963
Refmac	:	5.8.0049
CCP4	:	6.3.0 (Settle)
Ideal geometry (proteins)	:	Engh & Huber (2001)
Ideal geometry (DNA, RNA)	:	Parkinson et. al. (1996)
Validation Pipeline (wwPDB-VP)	:	stable22683

1 Overall quality at a glance

The reported resolution of this entry is 2.30 Å.

Percentile scores (ranging between 0-100) for global validation metrics of the entry are shown in the following graphic. The table shows the number of entries on which the scores are based.



Metric	Whole archive (#Entries)	Similar resolution (#Entries, resolution range(Å))
R_{free}	66092	2929 (2.30-2.30)
Clashscore	79885	3679 (2.30-2.30)
Ramachandran outliers	78287	3642 (2.30-2.30)
Sidechain outliers	78261	3641 (2.30-2.30)
RSRZ outliers	66119	2930 (2.30-2.30)

The table below summarises the geometric issues observed across the polymeric chains and their fit to the electron density. The red, orange, yellow and green segments on the lower bar indicate the fraction of residues that contain outliers for ≥ 3 , 2, 1 and 0 types of geometric quality criteria. The upper red bar (where present) indicates the fraction of residues that have poor fit to the electron density.

Mol	Chain	Length	Quality of chain
1	A	291	
1	B	291	
1	C	291	
1	D	291	

2 Entry composition i

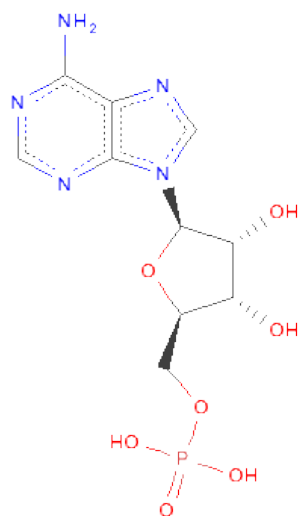
There are 5 unique types of molecules in this entry. The entry contains 8544 atoms, of which 0 are hydrogen and 0 are deuterium.

In the tables below, the ZeroOcc column contains the number of atoms modelled with zero occupancy, the AltConf column contains the number of residues with at least one atom in alternate conformation and the Trace column contains the number of residues modelled with at most 2 atoms.

- Molecule 1 is a protein called Pyrrolysine-tRNA ligase.

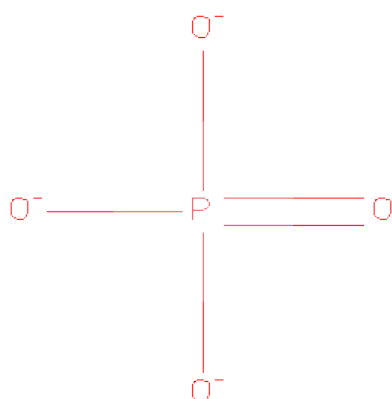
Mol	Chain	Residues	Atoms					ZeroOcc	AltConf	Trace
1	A	253	Total	C	N	O	S	0	0	0
			2062	1316	355	380	11			
1	B	246	Total	C	N	O	S	0	0	0
			2012	1288	347	368	9			
1	C	254	Total	C	N	O	S	0	0	0
			2069	1321	357	380	11			
1	D	257	Total	C	N	O	S	0	0	0
			2093	1334	360	388	11			

- Molecule 2 is ADENOSINE MONOPHOSPHATE (three-letter code: AMP) (formula: C₁₀H₁₄N₅O₇P).



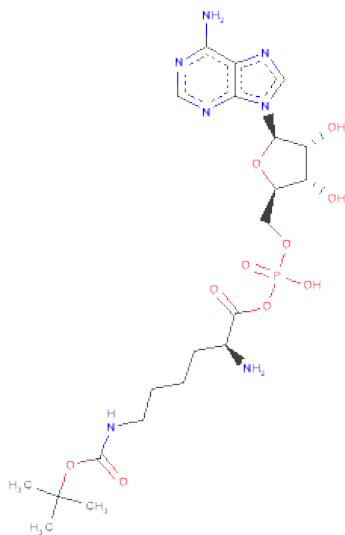
Mol	Chain	Residues	Atoms					ZeroOcc	AltConf
2	A	1	Total	C	N	O	P	0	0
			23	10	5	7	1		
2	B	1	Total	C	N	O	P	0	0
			23	10	5	7	1		

- Molecule 3 is PHOSPHATE ION (three-letter code: PO4) (formula: O₄P).



Mol	Chain	Residues	Atoms			ZeroOcc	AltConf
3	A	1	Total	O	P	0	0
			5	4	1		
3	B	1	Total	O	P	0	0
			5	4	1		
3	C	1	Total	O	P	0	0
			5	4	1		
3	D	1	Total	O	P	0	0
			5	4	1		

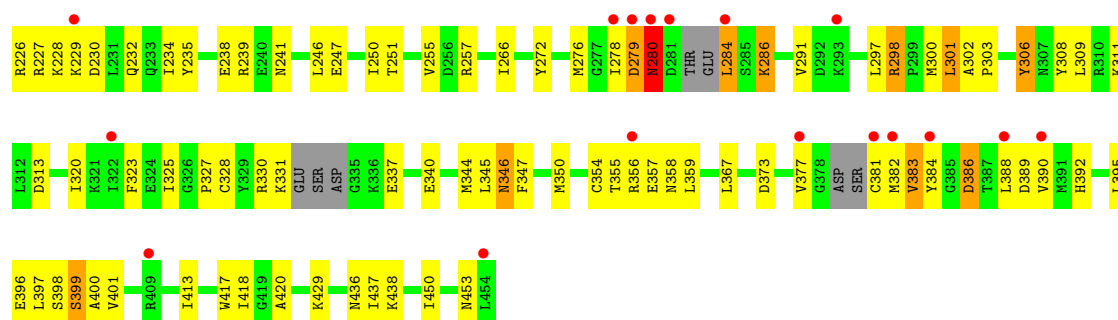
- Molecule 4 is [[(2R,3S,4R,5R)-5-(6-AMINOPURIN-9-YL)-3,4-BIS(OXIDANYL)OXOLAN-2-YL]METHOXY-OXIDANYL-PHOSPHORYL](2S)-2-AZANYL-6-[(2-METHYLPAN-2-YL)OXYCARBONYLAMINO]HEXANOATE (three-letter code: BLK) (formula: C₂₁H₃₄N₇O₁₀P).



Mol	Chain	Residues	Atoms					ZeroOcc	AltConf
4	C	1	Total	C	N	O	P	0	0
			39	21	7	10	1		
4	D	1	Total	C	N	O	P	0	0
			39	21	7	10	1		

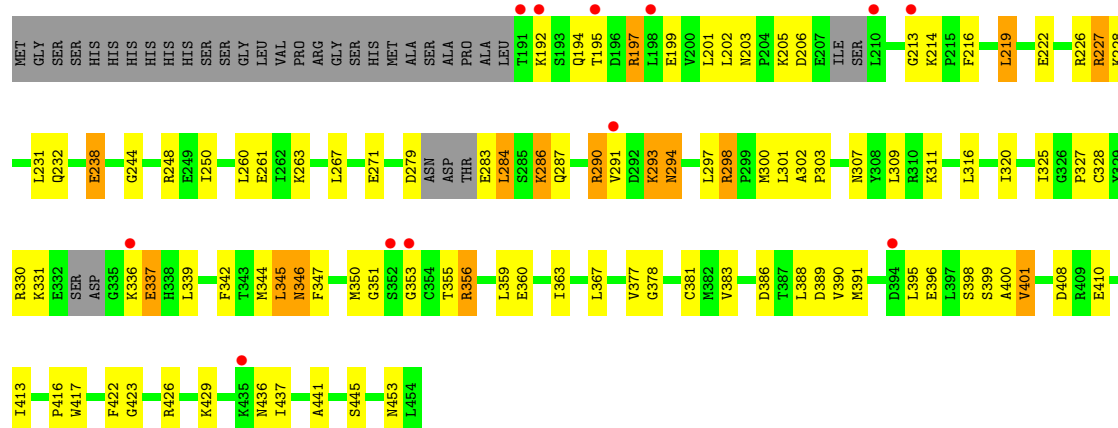
- Molecule 5 is water.

Mol	Chain	Residues	Atoms		ZeroOcc	AltConf
5	A	46	Total	O	0	0
			46	46		
5	D	30	Total	O	0	0
			30	30		
5	C	39	Total	O	0	0
			39	39		
5	B	49	Total	O	0	0
			49	49		



● Molecule 1: Pyrrolisine-tRNA ligase

Chain D:



4 Data and refinement statistics

Property	Value	Source
Space group	P 1	Depositor
Cell constants a, b, c, α , β , γ	62.80Å 69.42Å 83.33Å 106.92° 91.41° 113.83°	Depositor
Resolution (Å)	48.15 – 2.30 48.15 – 2.30	Depositor EDS
% Data completeness (in resolution range)	83.8 (48.15-2.30) 83.9 (48.15-2.30)	Depositor EDS
R_{merge}	(Not available)	Depositor
R_{sym}	0.04	Depositor
$\langle I/\sigma(I) \rangle$ ¹	2.17 (at 2.29Å)	Xtriage
Refinement program	CNS 1.1	Depositor
R, R_{free}	0.212 , 0.270 0.208 , 0.265	Depositor DCC
R_{free} test set	4573 reflections (11.23%)	DCC
Wilson B-factor (Å ²)	34.6	Xtriage
Anisotropy	0.107	Xtriage
Bulk solvent k_{sol} (e/Å ³), B_{sol} (Å ²)	0.38 , 44.2	EDS
Estimated twinning fraction	No twinning to report.	Xtriage
L-test for twinning	$\langle L \rangle = 0.48$, $\langle L^2 \rangle = 0.31$	Xtriage
Outliers	0 of 45278 reflections	Xtriage
F_o, F_c correlation	0.94	EDS
Total number of atoms	8544	wwPDB-VP
Average B, all atoms (Å ²)	46.0	wwPDB-VP

Xtriage's analysis on translational NCS is as follows: *The largest off-origin peak in the Patterson function is 5.97% of the height of the origin peak. No significant pseudotranslation is detected.*

¹Intensities estimated from amplitudes.

5 Model quality ⓘ

5.1 Standard geometry ⓘ

Bond lengths and bond angles in the following residue types are not validated in this section: AMP, PO4, BLK

The Z score for a bond length (or angle) is the number of standard deviations the observed value is removed from the expected value. A bond length (or angle) with $|Z| > 5$ is considered an outlier worth inspection. RMSZ is the root-mean-square of all Z scores of the bond lengths (or angles).

Mol	Chain	Bond lengths		Bond angles	
		RMSZ	# Z >5	RMSZ	# Z >5
1	A	0.40	0/2100	0.66	0/2817
1	B	0.39	0/2049	0.64	1/2749 (0.0%)
1	C	0.38	0/2106	0.62	0/2824
1	D	0.38	0/2131	0.64	0/2859
All	All	0.39	0/8386	0.64	1/11249 (0.0%)

Chiral center outliers are detected by calculating the chiral volume of a chiral center and verifying if the center is modelled as a planar moiety or with the opposite hand. A planarity outlier is detected by checking planarity of atoms in a peptide group, atoms in a mainchain group or atoms of a sidechain that are expected to be planar.

Mol	Chain	#Chirality outliers	#Planarity outliers
1	A	0	1

There are no bond length outliers.

All (1) bond angle outliers are listed below:

Mol	Chain	Res	Type	Atoms	Z	Observed(°)	Ideal(°)
1	B	393	GLY	N-CA-C	-5.59	99.12	113.10

There are no chirality outliers.

All (1) planarity outliers are listed below:

Mol	Chain	Res	Type	Group
1	A	447	TYR	Sidechain

5.2 Close contacts ⓘ

In the following table, the Non-H and H(model) columns list the number of non-hydrogen atoms and hydrogen atoms in the chain respectively. The H(added) column lists the number of hydrogens added by MolProbity. The Clashes column lists the number of clashes within the asymmetric unit, and the number in parentheses is this value normalized per 1000 atoms of the molecule in the chain. The Symm-Clashes column gives symmetry related clashes, in the same way as for the Clashes column.

Mol	Chain	Non-H	H(model)	H(added)	Clashes	Symm-Clashes
1	A	2062	0	2077	103	0
1	B	2012	0	2035	77	0
1	C	2069	0	2087	109	0
1	D	2093	0	2105	99	0
2	A	23	0	12	1	0
2	B	23	0	12	0	0
3	A	5	0	0	0	0
3	B	5	0	0	0	0
3	C	5	0	0	1	0
3	D	5	0	0	1	0
4	C	39	0	33	12	0
4	D	39	0	33	9	0
5	A	46	0	0	3	0
5	B	49	0	0	4	0
5	C	39	0	0	1	0
5	D	30	0	0	0	0
All	All	8544	0	8394	383	0

Clashscore is defined as the number of clashes calculated for the entry per 1000 atoms (including hydrogens) of the entry. The overall clashscore for this entry is 23.

The worst 5 of 383 close contacts within the same asymmetric unit are listed below.

Atom-1	Atom-2	Distance(Å)	Clash(Å)
1:D:290:ARG:HD3	1:D:290:ARG:H	1.22	1.05
1:D:350:MET:HE1	1:D:413:ILE:HD12	1.41	1.03
1:A:350:MET:HE1	1:A:413:ILE:HD12	1.42	1.01
1:A:203:ASN:HB2	1:A:227:ARG:HH21	1.26	0.99
1:C:191:THR:HG22	1:C:193:SER:H	1.28	0.98

There are no symmetry-related clashes.

5.3 Torsion angles

5.3.1 Protein backbone ⓘ

In the following table, the Percentiles column shows the percent Ramachandran outliers of the chain as a percentile score with respect to all X-ray entries followed by that with respect to entries of similar resolution. The Analysed column shows the number of residues for which the backbone conformation was analysed, and the total number of residues.

Mol	Chain	Analysed	Favoured	Allowed	Outliers	Percentiles	
1	A	245/291 (84%)	235 (96%)	8 (3%)	2 (1%)	27	30
1	B	236/291 (81%)	221 (94%)	12 (5%)	3 (1%)	18	17
1	C	244/291 (84%)	233 (96%)	8 (3%)	3 (1%)	19	19
1	D	249/291 (86%)	233 (94%)	16 (6%)	0	100	100
All	All	974/1164 (84%)	922 (95%)	44 (4%)	8 (1%)	27	30

5 of 8 Ramachandran outliers are listed below:

Mol	Chain	Res	Type
1	B	335	GLY
1	C	383	VAL
1	A	354	CYS
1	B	238	GLU
1	C	280	ASN

5.3.2 Protein sidechains ⓘ

In the following table, the Percentiles column shows the percent sidechain outliers of the chain as a percentile score with respect to all X-ray entries followed by that with respect to entries of similar resolution. The Analysed column shows the number of residues for which the sidechain conformation was analysed, and the total number of residues.

Mol	Chain	Analysed	Rotameric	Outliers	Percentiles	
1	A	227/259 (88%)	209 (92%)	18 (8%)	18	21
1	B	221/259 (85%)	206 (93%)	15 (7%)	22	28
1	C	228/259 (88%)	210 (92%)	18 (8%)	18	21
1	D	231/259 (89%)	208 (90%)	23 (10%)	11	12
All	All	907/1036 (88%)	833 (92%)	74 (8%)	17	19

5 of 74 residues with a non-rotameric sidechain are listed below:

Mol	Chain	Res	Type
1	C	192	LYS
1	C	301	LEU
1	D	381	CYS
1	C	257	ARG
1	C	284	LEU

Some sidechains can be flipped to improve hydrogen bonding and reduce clashes. 5 of 25 such sidechains are listed below:

Mol	Chain	Res	Type
1	C	304	ASN
1	C	349	GLN
1	D	436	ASN
1	C	346	ASN
1	C	358	ASN

5.3.3 RNA ⓘ

There are no RNA chains in this entry.

5.4 Non-standard residues in protein, DNA, RNA chains ⓘ

There are no non-standard protein/DNA/RNA residues in this entry.

5.5 Carbohydrates ⓘ

There are no carbohydrates in this entry.

5.6 Ligand geometry ⓘ

8 ligands are modelled in this entry.

In the following table, the Counts columns list the number of bonds (or angles) for which Mogul statistics could be retrieved, the number of bonds (or angles) that are observed in the model and the number of bonds (or angles) that are defined in the chemical component dictionary. The Link column lists molecule types, if any, to which the group is linked. The Z score for a bond length (or angle) is the number of standard deviations the observed value is removed from the expected value. A bond length (or angle) with $|Z| > 2$ is considered an outlier worth inspection. RMSZ is the root-mean-square of all Z scores of the bond lengths (or angles).

Mol	Type	Chain	Res	Link	Bond lengths			Bond angles		
					Counts	RMSZ	# Z > 2	Counts	RMSZ	# Z > 2
2	AMP	A	501	-	25,25,25	1.25	4 (16%)	38,38,38	1.98	7 (18%)
3	PO4	A	502	-	4,4,4	0.94	0	6,6,6	0.31	0
2	AMP	B	501	-	25,25,25	1.26	4 (16%)	38,38,38	1.97	7 (18%)
3	PO4	B	502	-	4,4,4	0.92	0	6,6,6	0.31	0
4	BLK	C	601	-	41,41,41	1.04	3 (7%)	60,60,60	2.09	14 (23%)
3	PO4	C	602	-	4,4,4	1.01	0	6,6,6	0.31	0
4	BLK	D	501	-	41,41,41	1.03	4 (9%)	60,60,60	2.14	15 (25%)
3	PO4	D	502	-	4,4,4	0.96	0	6,6,6	0.31	0

In the following table, the Chirals column lists the number of chiral outliers, the number of chiral centers analysed, the number of these observed in the model and the number defined in the chemical component dictionary. Similar counts are reported in the Torsion and Rings columns. '-' means no outliers of that kind were identified.

Mol	Type	Chain	Res	Link	Chirals	Torsions	Rings
2	AMP	A	501	-	-	0/10/26/26	0/1/3/3
3	PO4	A	502	-	-	0/0/0/0	0/0/0/0
2	AMP	B	501	-	-	0/10/26/26	0/1/3/3
3	PO4	B	502	-	-	0/0/0/0	0/0/0/0
4	BLK	C	601	-	-	0/30/48/48	0/1/3/3
3	PO4	C	602	-	-	0/0/0/0	0/0/0/0
4	BLK	D	501	-	-	0/30/48/48	0/1/3/3
3	PO4	D	502	-	-	0/0/0/0	0/0/0/0

The worst 5 of 15 bond length outliers are listed below:

Mol	Chain	Res	Type	Atoms	Z	Observed(Å)	Ideal(Å)
2	A	501	AMP	P-O1P	3.05	1.61	1.51
2	B	501	AMP	P-O1P	3.05	1.61	1.51
4	C	601	BLK	C4-N9	-3.04	1.33	1.37
2	B	501	AMP	C4-N9	-2.94	1.33	1.37
4	D	501	BLK	C4-N9	-2.94	1.33	1.37

The worst 5 of 43 bond angle outliers are listed below:

Mol	Chain	Res	Type	Atoms	Z	Observed(°)	Ideal(°)
2	B	501	AMP	N3-C2-N1	-8.45	121.64	128.71
4	C	601	BLK	N3-C2-N1	-8.44	121.65	128.71
2	A	501	AMP	N3-C2-N1	-8.40	121.69	128.71
4	D	501	BLK	N3-C2-N1	-8.28	121.79	128.71
4	D	501	BLK	CT-O2-CZ	-6.28	110.61	121.11

There are no chirality outliers.

There are no torsion outliers.

There are no ring outliers.

5.7 Other polymers ⓘ

There are no such residues in this entry.

5.8 Polymer linkage issues

There are no chain breaks in this entry.

6 Fit of model and data

6.1 Protein, DNA and RNA chains

In the following table, the column labelled ‘#RSRZ> 2’ contains the number (and percentage) of RSRZ outliers, followed by percent RSRZ outliers for the chain as percentile scores relative to all X-ray entries and entries of similar resolution. The OWAB column contains the minimum, median, 95th percentile and maximum values of the occupancy-weighted average B-factor per residue. The column labelled ‘Q< 0.9’ lists the number of (and percentage) of residues with an average occupancy less than 0.9.

Mol	Chain	Analysed	<RSRZ>	#RSRZ>2	OWAB(Å ²)	Q<0.9
1	A	253/291 (86%)	0.32	8 (3%) 45 55	20, 42, 69, 86	0
1	B	246/291 (84%)	0.38	14 (5%) 23 32	26, 43, 69, 88	0
1	C	254/291 (87%)	0.66	27 (10%) 7 11	24, 47, 76, 99	0
1	D	257/291 (88%)	0.37	12 (4%) 30 40	23, 45, 73, 83	0
All	All	1010/1164 (86%)	0.43	61 (6%) 21 30	20, 44, 72, 99	0

The worst 5 of 61 RSRZ outliers are listed below:

Mol	Chain	Res	Type	RSRZ
1	C	281	ASP	6.1
1	A	208	ILE	5.7
1	B	376	ILE	5.5
1	C	382	MET	5.4
1	C	214	LYS	5.4

6.2 Non-standard residues in protein, DNA, RNA chains

There are no non-standard protein/DNA/RNA residues in this entry.

6.3 Carbohydrates

There are no carbohydrates in this entry.

6.4 Ligands

In the following table, the Atoms column lists the number of modelled atoms in the group and the number defined in the chemical component dictionary. LLDF column lists the quality of electron density of the group with respect to its neighbouring residues in protein, DNA or RNA chains. The B-factors column lists the minimum, median, 95th percentile and maximum values of B factors

of atoms in the group. The column labelled 'Q < 0.9' lists the number of atoms with occupancy less than 0.9.

Mol	Type	Chain	Res	Atoms	RSR	LLDF	B-factors(\AA^2)	Q<0.9
3	PO4	A	502	5/5	0.12	0.21	47,49,51,53	0
4	BLK	C	601	39/39	0.15	-0.02	61,66,76,76	0
4	BLK	D	501	39/39	0.13	-0.19	52,58,68,68	0
2	AMP	B	501	23/23	0.12	-0.53	60,69,81,82	0
2	AMP	A	501	23/23	0.11	-0.68	64,67,75,75	0
3	PO4	D	502	5/5	0.12	-0.78	46,46,47,48	0
3	PO4	C	602	5/5	0.11	-2.01	58,59,59,62	0
3	PO4	B	502	5/5	0.10	-9.49	53,55,57,58	0

6.5 Other polymers ⓘ

There are no such residues in this entry.