



Full wwPDB X-ray Structure Validation Report

Feb 28, 2014 – 05:59 PM GMT

PDB ID : 2VVM
Title : THE STRUCTURE OF MAO-N-D5, A VARIANT OF MONOAMINE OXIDASE FROM ASPERGILLUS NIGER.
Authors : Atkin, K.E.; Hart, S.; Turkenburg, J.P.; Brzozowski, A.M.; Grogan, G.J.
Deposited on : 2008-06-10
Resolution : 1.85 Å(reported)

This is a full wwPDB validation report for a publicly released PDB entry.
We welcome your comments at validation@mail.wwpdb.org
A user guide is available at <http://wwpdb.org/ValidationPDFNotes.html>

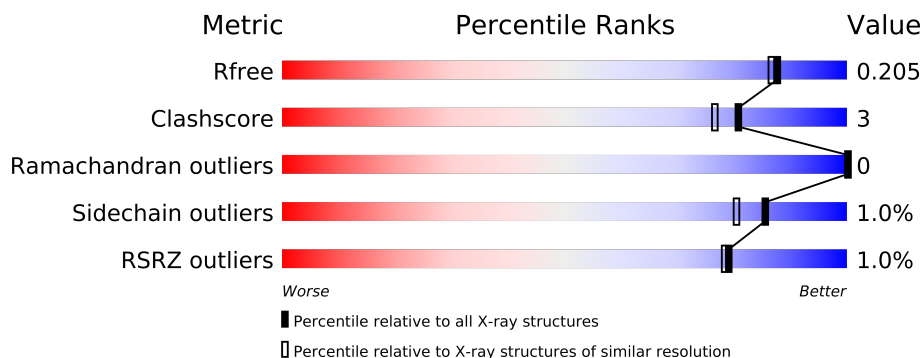
The following versions of software and data (see [references](#)) were used in the production of this report:

MolProbity : 4.02b-467
Mogul : 1.15 2013
Xtriage (Phenix) : dev-1323
EDS : stable22639
Percentile statistics : 21963
Refmac : 5.8.0049
CCP4 : 6.3.0 (Settle)
Ideal geometry (proteins) : Engh & Huber (2001)
Ideal geometry (DNA, RNA) : Parkinson et. al. (1996)
Validation Pipeline (wwPDB-VP) : stable22683

1 Overall quality at a glance

The reported resolution of this entry is 1.85 Å.

Percentile scores (ranging between 0-100) for global validation metrics of the entry are shown in the following graphic. The table shows the number of entries on which the scores are based.



Metric	Whole archive (#Entries)	Similar resolution (#Entries, resolution range(Å))
R_{free}	66092	1269 (1.86-1.86)
Clashscore	79885	1470 (1.86-1.86)
Ramachandran outliers	78287	1451 (1.86-1.86)
Sidechain outliers	78261	1451 (1.86-1.86)
RSRZ outliers	66119	1269 (1.86-1.86)

The table below summarises the geometric issues observed across the polymeric chains and their fit to the electron density. The red, orange, yellow and green segments on the lower bar indicate the fraction of residues that contain outliers for ≥ 3 , 2, 1 and 0 types of geometric quality criteria. The upper red bar (where present) indicates the fraction of residues that have poor fit to the electron density.

Mol	Chain	Length	Quality of chain
1	A	495	
1	B	495	

The following table lists non-polymeric compounds that are outliers for geometric or electron-density-fit criteria:

Mol	Type	Chain	Res	Geometry	Electron density
2	PRO	A	601	-	X
4	EDO	A	602	-	X
4	EDO	B	602	-	X
4	EDO	B	604	-	X

2 Entry composition

There are 5 unique types of molecules in this entry. The entry contains 8466 atoms, of which 0 are hydrogen and 0 are deuterium.

In the tables below, the ZeroOcc column contains the number of atoms modelled with zero occupancy, the AltConf column contains the number of residues with at least one atom in alternate conformation and the Trace column contains the number of residues modelled with at most 2 atoms.

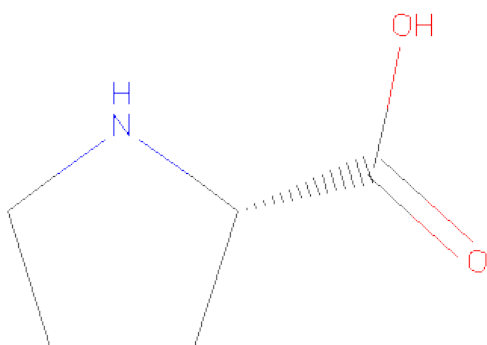
- Molecule 1 is a protein called MONOAMINE OXIDASE N.

Mol	Chain	Residues	Atoms					ZeroOcc	AltConf	Trace
1	A	481	Total	C	N	O	S	17	15	0
			3820	2413	677	707	23			
1	B	478	Total	C	N	O	S	50	25	0
			3795	2398	671	703	23			

There are 14 discrepancies between the modelled and reference sequences:

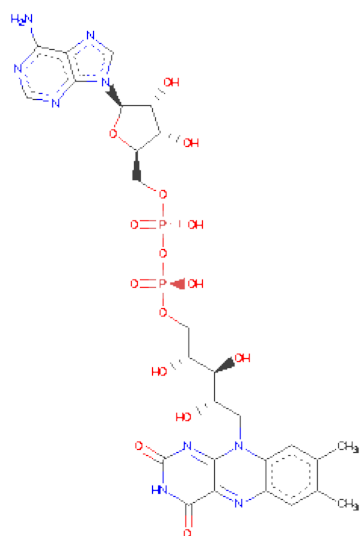
Chain	Residue	Modelled	Actual	Comment	Reference
A	246	MET	ILE	ENGINEERED MUTATION	UNP P46882
A	336	SER	ASN	ENGINEERED MUTATION	UNP P46882
A	384	ASN	THR	ENGINEERED MUTATION	UNP P46882
A	385	SER	ASP	ENGINEERED MUTATION	UNP P46882
A	300	VAL	ALA	CONFLICT	UNP P46882
A	304	VAL	LEU	CONFLICT	UNP P46882
A	450	GLY	ARG	CONFLICT	UNP P46882
B	246	MET	ILE	ENGINEERED MUTATION	UNP P46882
B	336	SER	ASN	ENGINEERED MUTATION	UNP P46882
B	384	ASN	THR	ENGINEERED MUTATION	UNP P46882
B	385	SER	ASP	ENGINEERED MUTATION	UNP P46882
B	300	VAL	ALA	CONFLICT	UNP P46882
B	304	VAL	LEU	CONFLICT	UNP P46882
B	450	GLY	ARG	CONFLICT	UNP P46882

- Molecule 2 is PROLINE (three-letter code: PRO) (formula: C₅H₉NO₂).



Mol	Chain	Residues	Atoms				ZeroOcc	AltConf
2	A	1	Total	C	N	O	0	0
			8	5	1	2		
2	B	1	Total	C	N	O	0	0
			8	5	1	2		

- Molecule 3 is FLAVIN-ADENINE DINUCLEOTIDE (three-letter code: FAD) (formula: $C_{27}H_{33}N_9O_{15}P_2$).



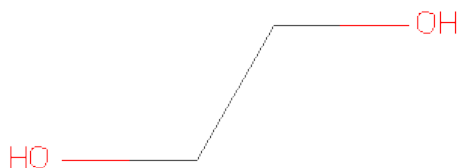
Mol	Chain	Residues	Atoms					ZeroOcc	AltConf
3	A	1	Total	C	N	O	P	0	0
			53	27	9	15	2		

Continued on next page...

Continued from previous page...

Mol	Chain	Residues	Atoms					ZeroOcc	AltConf
3	B	1	Total	C	N	O	P	0	0
			53	27	9	15	2		

- Molecule 4 is 1,2-ETHANEDIOL (three-letter code: EDO) (formula: C₂H₆O₂).



Mol	Chain	Residues	Atoms			ZeroOcc	AltConf
4	A	1	Total	C	O	0	0
			4	2	2		
4	A	1	Total	C	O	0	0
			4	2	2		
4	A	1	Total	C	O	0	0
			4	2	2		
4	B	1	Total	C	O	0	0
			4	2	2		
4	B	1	Total	C	O	0	0
			4	2	2		
4	B	1	Total	C	O	0	0
			4	2	2		

- Molecule 5 is water.

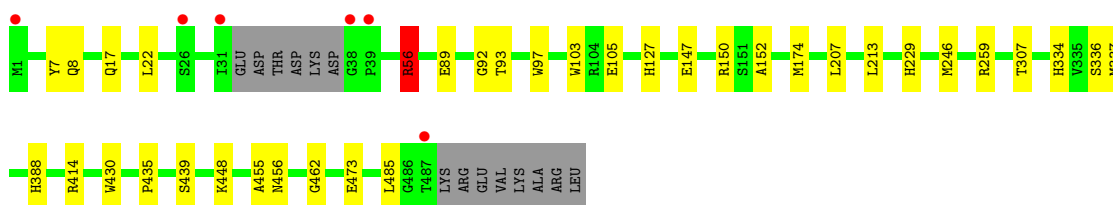
Mol	Chain	Residues	Atoms		ZeroOcc	AltConf
5	A	357	Total	O	0	0
			357	357		
5	B	348	Total	O	0	0
			348	348		

3 Residue-property plots

These plots are drawn for all protein, RNA and DNA chains in the entry. The first graphic for a chain summarises the proportions of errors displayed in the second graphic. The second graphic shows the sequence view annotated by issues in geometry and electron density. Residues are color-coded according to the number of geometric quality criteria for which they contain at least one outlier: green = 0, yellow = 1, orange = 2 and red = 3 or more. A red dot above a residue indicates a poor fit to the electron density ($RSRZ > 2$). Stretches of 2 or more consecutive residues without any outlier are shown as a green connector. Residues present in the sample, but not in the model, are shown in grey.

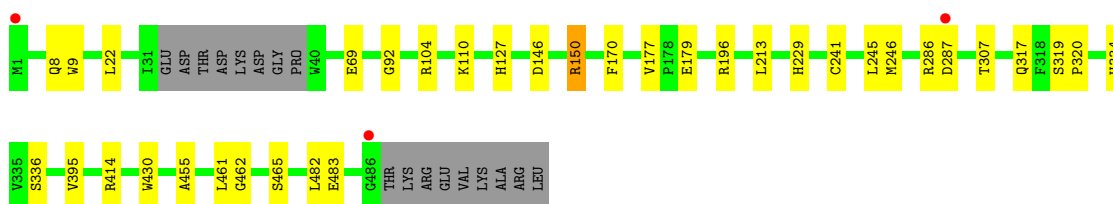
• Molecule 1: MONOAMINE OXIDASE N

Chain A: 



• Molecule 1: MONOAMINE OXIDASE N

Chain B: 



4 Data and refinement statistics

Property	Value	Source
Space group	P 43 21 2	Depositor
Cell constants a, b, c, α , β , γ	107.42Å 107.42Å 235.40Å 90.00° 90.00° 90.00°	Depositor
Resolution (Å)	97.59 – 1.85 29.79 – 1.85	Depositor EDS
% Data completeness (in resolution range)	99.7 (97.59-1.85) 99.8 (29.79-1.85)	Depositor EDS
R_{merge}	0.09	Depositor
R_{sym}	(Not available)	Depositor
$\langle I/\sigma(I) \rangle$ ¹	2.45 (at 1.85Å)	Xtriage
Refinement program	REFMAC 5.4.0065	Depositor
R, R_{free}	0.181 , 0.205 0.182 , 0.205	Depositor DCC
R_{free} test set	5893 reflections (5.27%)	DCC
Wilson B-factor (Å ²)	24.8	Xtriage
Anisotropy	0.306	Xtriage
Bulk solvent k_{sol} (e/Å ³), B_{sol} (Å ²)	0.35 , 36.3	EDS
Estimated twinning fraction	No twinning to report.	Xtriage
L-test for twinning	$\langle L \rangle = 0.50$, $\langle L^2 \rangle = 0.33$	Xtriage
Outliers	1 of 117629 reflections (0.001%)	Xtriage
F_o, F_c correlation	0.96	EDS
Total number of atoms	8466	wwPDB-VP
Average B, all atoms (Å ²)	25.0	wwPDB-VP

Xtriage's analysis on translational NCS is as follows: *The largest off-origin peak in the Patterson function is 3.29% of the height of the origin peak. No significant pseudotranslation is detected.*

¹Intensities estimated from amplitudes.

5 Model quality ⓘ

5.1 Standard geometry ⓘ

Bond lengths and bond angles in the following residue types are not validated in this section: EDO, FAD

The Z score for a bond length (or angle) is the number of standard deviations the observed value is removed from the expected value. A bond length (or angle) with $|Z| > 5$ is considered an outlier worth inspection. RMSZ is the root-mean-square of all Z scores of the bond lengths (or angles).

Mol	Chain	Bond lengths		Bond angles	
		RMSZ	$\# Z > 5$	RMSZ	$\# Z > 5$
1	A	0.47	0/3936	0.57	2/5335 (0.0%)
1	B	0.56	3/3907 (0.1%)	0.68	5/5296 (0.1%)
All	All	0.52	3/7843 (0.0%)	0.63	7/10631 (0.1%)

All (3) bond length outliers are listed below:

Mol	Chain	Res	Type	Atoms	Z	Observed(Å)	Ideal(Å)
1	B	150[A]	ARG	CZ-NH2	-5.66	1.25	1.33
1	B	150[B]	ARG	CZ-NH2	-5.66	1.25	1.33
1	B	317[A]	GLN	CG-CD	5.05	1.62	1.51

All (7) bond angle outliers are listed below:

Mol	Chain	Res	Type	Atoms	Z	Observed(°)	Ideal(°)
1	B	196[A]	ARG	NE-CZ-NH1	16.57	128.59	120.30
1	B	196[A]	ARG	NE-CZ-NH2	-16.51	112.04	120.30
1	B	482[A]	LEU	CB-CG-CD2	8.40	125.28	111.00
1	A	435	PRO	CA-N-CD	-8.19	100.03	111.50
1	A	56	ARG	NE-CZ-NH2	-7.30	116.65	120.30
1	B	110[A]	LYS	CD-CE-NZ	-5.75	98.47	111.70
1	B	483[A]	GLU	CA-CB-CG	5.44	125.36	113.40

There are no chirality outliers.

There are no planarity outliers.

5.2 Close contacts ⓘ

In the following table, the Non-H and H(model) columns list the number of non-hydrogen atoms and hydrogen atoms in the chain respectively. The H(added) column lists the number of hydrogens

added by MolProbity. The Clashes column lists the number of clashes within the asymmetric unit, and the number in parentheses is this value normalized per 1000 atoms of the molecule in the chain. The Symm-Clashes column gives symmetry related clashes, in the same way as for the Clashes column.

Mol	Chain	Non-H	H(model)	H(added)	Clashes	Symm-Clashes
1	A	3820	0	3620	23	0
1	B	3795	0	3554	22	0
2	A	8	0	7	1	0
2	B	8	0	7	1	0
3	A	53	0	28	3	0
3	B	53	0	28	4	0
4	A	12	0	18	2	0
4	B	12	0	18	5	0
5	A	357	0	0	3	0
5	B	348	0	0	2	0
All	All	8466	0	7280	49	0

Clashscore is defined as the number of clashes calculated for the entry per 1000 atoms (including hydrogens) of the entry. The overall clashscore for this entry is 3.

All (49) close contacts within the same asymmetric unit are listed below.

Atom-1	Atom-2	Distance(Å)	Clash(Å)
1:A:56:ARG:NH2	1:A:105:GLU:OE1	2.01	0.93
1:B:146[A]:ASP:OD2	1:B:150[A]:ARG:CZ	2.19	0.90
2:B:601:PRO:N	4:B:602:EDO:HO2	1.86	0.73
1:A:8:GLN:NE2	1:A:414:ARG:HH21	1.87	0.72
1:B:8:GLN:NE2	1:B:414:ARG:HH21	1.90	0.70
3:A:600:FAD:H9	3:A:600:FAD:H2'	1.74	0.69
1:B:229:HIS:HE1	1:B:462:GLY:O	1.77	0.68
1:A:229:HIS:HE1	1:A:462:GLY:O	1.77	0.67
1:A:334:HIS:HD2	1:A:336:SER:H	1.43	0.67
1:B:334:HIS:HD2	1:B:336:SER:H	1.43	0.65
3:B:600:FAD:H2'	3:B:600:FAD:H9	1.79	0.64
1:B:465:SER:O	4:B:602:EDO:O1	2.16	0.63
1:A:8:GLN:HE21	1:A:414:ARG:HH21	1.47	0.62
1:B:8:GLN:HE21	1:B:414:ARG:HH21	1.46	0.61
1:A:229:HIS:HD2	5:A:2124:HOH:O	1.82	0.61
1:B:92:GLY:HA2	3:B:600:FAD:C4X	2.33	0.58
1:B:104:ARG:HH22	4:B:604:EDO:H11	1.66	0.58
1:A:92:GLY:HA2	3:A:600:FAD:C4X	2.34	0.57
1:B:430:TRP:HB3	3:B:600:FAD:H1'1	1.86	0.57
1:A:174:MET:HE1	1:A:439:SER:HB3	1.89	0.55
1:B:229:HIS:HD2	5:B:2143:HOH:O	1.88	0.55

Continued on next page...

Continued from previous page...

Atom-1	Atom-2	Distance(Å)	Clash(Å)
1:B:177:VAL:HG12	1:B:179:GLU:HG2	1.88	0.55
1:A:337:MET:O	1:A:388:HIS:HE1	1.89	0.54
1:A:430:TRP:HB3	3:A:600:FAD:H1'1	1.89	0.54
1:A:56:ARG:HH22	1:A:105:GLU:CD	2.08	0.53
2:A:601:PRO:N	4:A:602:EDO:HO1	2.07	0.52
4:A:604:EDO:H12	1:B:170:PHE:CG	2.48	0.49
1:A:213:LEU:HD21	1:A:246:MET:HE1	1.95	0.48
1:A:448:LYS:HG3	5:A:2344:HOH:O	2.14	0.48
1:A:336:SER:HB3	1:A:430:TRP:O	2.15	0.46
1:B:319:SER:HA	1:B:320:PRO:C	2.35	0.46
1:B:241:CYS:O	1:B:245:LEU:HG	2.15	0.46
1:B:69:GLU:OE1	3:B:600:FAD:H3B	2.17	0.45
1:B:307:THR:HA	1:B:455:ALA:O	2.16	0.45
1:B:104:ARG:HH12	4:B:604:EDO:C1	2.29	0.45
1:B:334:HIS:HE1	5:B:2311:HOH:O	1.99	0.45
1:B:104:ARG:HH12	4:B:604:EDO:H11	1.83	0.43
1:A:307:THR:HA	1:A:455:ALA:O	2.19	0.43
1:A:334:HIS:HE1	5:A:2324:HOH:O	2.02	0.42
1:A:89:GLU:HG3	1:A:93:THR:HG23	2.01	0.42
1:A:152:ALA:HB1	1:A:207:LEU:HB2	2.01	0.42
1:A:22:LEU:O	1:A:259:ARG:HD3	2.19	0.42
1:B:213:LEU:HD21	1:B:246:MET:HE1	2.02	0.41
1:A:7:TYR:CE1	1:A:17:GLN:HG2	2.56	0.41
1:A:456:ASN:O	1:A:473:GLU:HG3	2.19	0.41
1:B:336:SER:HB3	1:B:430:TRP:O	2.20	0.41
1:A:147:GLU:OE1	1:A:150[A]:ARG:NH2	2.53	0.41
1:B:9:TRP:CD1	1:B:395:VAL:HG11	2.56	0.40
1:A:97:TRP:HB3	1:A:103:TRP:CE2	2.57	0.40

There are no symmetry-related clashes.

5.3 Torsion angles

5.3.1 Protein backbone ⓘ

In the following table, the Percentiles column shows the percent Ramachandran outliers of the chain as a percentile score with respect to all X-ray entries followed by that with respect to entries of similar resolution. The Analysed column shows the number of residues for which the backbone conformation was analysed, and the total number of residues.

Mol	Chain	Analysed	Favoured	Allowed	Outliers	Percentiles	
1	A	482/495 (97%)	471 (98%)	11 (2%)	0	100	100

Continued on next page...

Continued from previous page...

Mol	Chain	Analysed	Favoured	Allowed	Outliers	Percentiles	
1	B	478/495 (97%)	467 (98%)	11 (2%)	0	100	100
All	All	960/990 (97%)	938 (98%)	22 (2%)	0	100	100

There are no Ramachandran outliers to report.

5.3.2 Protein sidechains ⓘ

In the following table, the Percentiles column shows the percent sidechain outliers of the chain as a percentile score with respect to all X-ray entries followed by that with respect to entries of similar resolution. The Analysed column shows the number of residues for which the sidechain conformation was analysed, and the total number of residues.

Mol	Chain	Analysed	Rotameric	Outliers	Percentiles	
1	A	406/414 (98%)	403 (99%)	3 (1%)	91	87
1	B	403/414 (97%)	398 (99%)	5 (1%)	82	75
All	All	809/828 (98%)	801 (99%)	8 (1%)	85	80

All (8) residues with a non-rotameric sidechain are listed below:

Mol	Chain	Res	Type
1	A	56	ARG
1	A	127	HIS
1	A	485	LEU
1	B	22	LEU
1	B	127	HIS
1	B	286[A]	ARG
1	B	287[A]	ASP
1	B	461	LEU

Some sidechains can be flipped to improve hydrogen bonding and reduce clashes. All (14) such sidechains are listed below:

Mol	Chain	Res	Type
1	A	8	GLN
1	A	163	ASN
1	A	229	HIS
1	A	284	ASN
1	A	334	HIS
1	A	388	HIS
1	A	404	GLN

Continued on next page...

Continued from previous page...

Mol	Chain	Res	Type
1	B	8	GLN
1	B	101	HIS
1	B	163	ASN
1	B	229	HIS
1	B	284	ASN
1	B	334	HIS
1	B	404[A]	GLN

5.3.3 RNA ⓘ

There are no RNA chains in this entry.

5.4 Non-standard residues in protein, DNA, RNA chains ⓘ

There are no non-standard protein/DNA/RNA residues in this entry.

5.5 Carbohydrates ⓘ

There are no carbohydrates in this entry.

5.6 Ligand geometry ⓘ

10 ligands are modelled in this entry.

In the following table, the Counts columns list the number of bonds (or angles) for which Mogul statistics could be retrieved, the number of bonds (or angles) that are observed in the model and the number of bonds (or angles) that are defined in the chemical component dictionary. The Link column lists molecule types, if any, to which the group is linked. The Z score for a bond length (or angle) is the number of standard deviations the observed value is removed from the expected value. A bond length (or angle) with $|Z| > 2$ is considered an outlier worth inspection. RMSZ is the root-mean-square of all Z scores of the bond lengths (or angles).

Mol	Type	Chain	Res	Link	Bond lengths			Bond angles		
					Counts	RMSZ	$\# Z > 2$	Counts	RMSZ	$\# Z > 2$
3	FAD	A	600	-	58,58,58	2.43	25 (43%)	85,89,89	2.55	20 (23%)
2	PRO	A	601	-	8,8,8	0.75	0	10,10,10	1.36	1 (10%)
4	EDO	A	602	-	3,3,3	0.47	0	2,2,2	0.60	0
4	EDO	A	603	-	3,3,3	0.48	0	2,2,2	0.61	0
4	EDO	A	604	-	3,3,3	0.47	0	2,2,2	0.09	0
3	FAD	B	600	-	58,58,58	2.12	25 (43%)	85,89,89	2.85	27 (31%)

Mol	Type	Chain	Res	Link	Bond lengths			Bond angles		
					Counts	RMSZ	# Z > 2	Counts	RMSZ	# Z > 2
2	PRO	B	601	-	8,8,8	0.73	0	10,10,10	1.35	1 (10%)
4	EDO	B	602	-	3,3,3	0.44	0	2,2,2	0.61	0
4	EDO	B	603	-	3,3,3	0.56	0	2,2,2	0.28	0
4	EDO	B	604	-	3,3,3	0.54	0	2,2,2	0.43	0

In the following table, the Chirals column lists the number of chiral outliers, the number of chiral centers analysed, the number of these observed in the model and the number defined in the chemical component dictionary. Similar counts are reported in the Torsion and Rings columns. '-' means no outliers of that kind were identified.

Mol	Type	Chain	Res	Link	Chirals	Torsions	Rings
3	FAD	A	600	-	3/3/9/9	0/34/50/50	0/1/6/6
2	PRO	A	601	-	-	0/4/11/11	0/1/1/1
4	EDO	A	602	-	-	0/1/1/1	0/0/0/0
4	EDO	A	603	-	-	0/1/1/1	0/0/0/0
4	EDO	A	604	-	-	0/1/1/1	0/0/0/0
3	FAD	B	600	-	3/3/9/9	0/34/50/50	0/1/6/6
2	PRO	B	601	-	-	0/4/11/11	0/1/1/1
4	EDO	B	602	-	-	0/1/1/1	0/0/0/0
4	EDO	B	603	-	-	0/1/1/1	0/0/0/0
4	EDO	B	604	-	-	0/1/1/1	0/0/0/0

All (50) bond length outliers are listed below:

Mol	Chain	Res	Type	Atoms	Z	Observed(Å)	Ideal(Å)
3	A	600	FAD	C4A-N9A	-6.17	1.28	1.37
3	A	600	FAD	P-O1P	-5.46	1.30	1.51
3	A	600	FAD	P-O3P	-4.89	1.51	1.59
3	A	600	FAD	O4B-C1B	4.57	1.48	1.41
3	A	600	FAD	C8A-N9A	-4.47	1.30	1.36
3	B	600	FAD	C4A-N9A	-4.39	1.31	1.37
3	A	600	FAD	C6-C5X	-4.13	1.36	1.41
3	A	600	FAD	PA-O1A	-4.02	1.36	1.51
3	A	600	FAD	PA-O2A	-3.95	1.37	1.55
3	B	600	FAD	C1'-C2'	3.86	1.55	1.51
3	B	600	FAD	C6-C5X	-3.81	1.37	1.41
3	B	600	FAD	C8A-N9A	-3.79	1.31	1.36
3	B	600	FAD	PA-O1A	-3.71	1.37	1.51
3	B	600	FAD	P-O2P	-3.68	1.38	1.55
3	A	600	FAD	O4'-C4'	-3.48	1.35	1.43
3	A	600	FAD	P-O2P	-3.41	1.39	1.55
3	B	600	FAD	PA-O2A	-3.37	1.40	1.55

Continued on next page...

Continued from previous page...

Mol	Chain	Res	Type	Atoms	Z	Observed(Å)	Ideal(Å)
3	A	600	FAD	O3B-C3B	-3.20	1.35	1.43
3	B	600	FAD	O2'-C2'	-3.10	1.36	1.43
3	B	600	FAD	P-O1P	-3.02	1.39	1.51
3	B	600	FAD	PA-O5B	-3.00	1.45	1.59
3	B	600	FAD	O3B-C3B	-3.00	1.35	1.43
3	A	600	FAD	C1'-C2'	2.98	1.54	1.51
3	B	600	FAD	C1'-N10	-2.86	1.44	1.48
3	B	600	FAD	PA-O3P	-2.73	1.54	1.59
3	B	600	FAD	O4'-C4'	-2.70	1.37	1.43
3	A	600	FAD	O5B-C5B	-2.70	1.33	1.44
3	A	600	FAD	C5A-N7A	-2.69	1.30	1.40
3	A	600	FAD	O4-C4	-2.69	1.19	1.24
3	B	600	FAD	O5'-C5'	-2.67	1.33	1.44
3	B	600	FAD	C5X-N5	2.60	1.39	1.35
3	B	600	FAD	C2'-C3'	2.57	1.58	1.53
3	A	600	FAD	P-O5'	-2.54	1.47	1.59
3	A	600	FAD	C4A-N3A	-2.51	1.31	1.35
3	B	600	FAD	C5A-N7A	-2.47	1.31	1.40
3	A	600	FAD	C1'-N10	-2.43	1.45	1.48
3	A	600	FAD	C2'-C3'	2.33	1.58	1.53
3	A	600	FAD	C2A-N1A	-2.32	1.29	1.33
3	A	600	FAD	C8A-N7A	-2.30	1.30	1.34
3	B	600	FAD	C9A-C5X	-2.26	1.37	1.42
3	B	600	FAD	P-O3P	-2.24	1.55	1.59
3	A	600	FAD	C5A-C4A	-2.24	1.35	1.40
3	B	600	FAD	O5B-C5B	-2.21	1.35	1.44
3	A	600	FAD	C4-C4X	-2.16	1.37	1.41
3	B	600	FAD	O4-C4	-2.11	1.20	1.24
3	B	600	FAD	C9-C9A	-2.10	1.36	1.40
3	B	600	FAD	O2-C2	-2.07	1.19	1.23
3	B	600	FAD	O4B-C4B	-2.07	1.40	1.45
3	A	600	FAD	PA-O5B	-2.06	1.49	1.59
3	A	600	FAD	C5'-C4'	2.00	1.54	1.51

All (49) bond angle outliers are listed below:

Mol	Chain	Res	Type	Atoms	Z	Observed(°)	Ideal(°)
3	B	600	FAD	C3B-C2B-C1B	-10.55	84.40	100.91
3	A	600	FAD	O4B-C1B-N9A	10.02	117.76	108.44
3	A	600	FAD	C3B-C2B-C1B	-8.38	87.80	100.91
3	B	600	FAD	C2B-C3B-C4B	-8.19	86.33	102.65
3	B	600	FAD	O4B-C1B-N9A	7.70	115.60	108.44

Continued on next page...

Continued from previous page...

Mol	Chain	Res	Type	Atoms	Z	Observed(°)	Ideal(°)
3	B	600	FAD	O4B-C4B-C3B	-7.22	90.54	105.17
3	B	600	FAD	N3A-C2A-N1A	-6.92	122.92	128.71
3	A	600	FAD	N3A-C2A-N1A	-6.91	122.93	128.71
3	A	600	FAD	C2B-C3B-C4B	-5.89	90.91	102.65
3	A	600	FAD	O4B-C4B-C3B	-5.79	93.44	105.17
3	B	600	FAD	C2-N1-C10	5.72	120.74	114.98
3	B	600	FAD	C5B-C4B-C3B	5.69	138.02	115.21
3	A	600	FAD	C5B-C4B-C3B	5.44	136.99	115.21
3	B	600	FAD	C4B-O4B-C1B	-5.26	104.03	109.75
3	B	600	FAD	C1'-N10-C9A	5.21	123.94	118.87
3	A	600	FAD	C4B-O4B-C1B	-4.88	104.44	109.75
3	B	600	FAD	O3B-C3B-C4B	4.85	125.37	111.08
3	A	600	FAD	O3B-C3B-C4B	4.61	124.66	111.08
3	A	600	FAD	C2-N1-C10	4.59	119.60	114.98
3	A	600	FAD	N3A-C4A-N9A	4.34	133.26	125.43
3	B	600	FAD	N3A-C4A-N9A	4.33	133.25	125.43
3	B	600	FAD	O4B-C1B-C2B	-4.02	100.61	106.77
3	A	600	FAD	O2'-C2'-C3'	4.02	119.05	109.05
3	B	600	FAD	O2'-C2'-C3'	3.86	118.65	109.05
3	B	600	FAD	C4A-C5A-N7A	-3.31	106.69	109.52
3	A	600	FAD	O4B-C1B-C2B	-3.20	101.87	106.77
3	A	600	FAD	C5A-C4A-N3A	-3.20	118.74	125.70
3	B	600	FAD	C4'-C3'-C2'	3.17	120.41	113.25
3	B	600	FAD	C1'-C2'-C3'	3.13	118.78	109.82
3	A	600	FAD	C1'-N10-C9A	3.09	121.88	118.87
3	B	600	FAD	C5X-C9A-N10	2.94	119.69	116.80
3	B	600	FAD	C5A-C4A-N3A	-2.91	119.37	125.70
3	A	600	FAD	C4X-C10-N10	-2.87	119.08	120.51
3	A	600	FAD	C4'-C3'-C2'	2.77	119.51	113.25
2	A	601	PRO	OXT-C-O	-2.74	117.88	124.07
2	B	601	PRO	OXT-C-O	-2.71	117.94	124.07
3	B	600	FAD	C9A-N10-C10	-2.70	119.12	121.77
3	B	600	FAD	C5'-C4'-C3'	-2.55	107.25	112.06
3	B	600	FAD	C2B-C1B-N9A	2.54	119.78	113.27
3	A	600	FAD	C4A-C5A-N7A	-2.52	107.36	109.52
3	A	600	FAD	C2A-N3A-C4A	2.42	120.89	114.01
3	B	600	FAD	C4X-N5-C5X	2.39	119.38	116.69
3	B	600	FAD	C1B-N9A-C4A	-2.38	122.52	126.64
3	B	600	FAD	C4-N3-C2	-2.28	120.70	125.39
3	B	600	FAD	O2P-P-O3P	2.26	115.85	105.14
3	B	600	FAD	C4X-C10-N1	-2.13	120.60	122.73
3	B	600	FAD	C9A-C5X-N5	-2.12	119.12	122.37

Continued on next page...

Continued from previous page...

Mol	Chain	Res	Type	Atoms	Z	Observed(°)	Ideal(°)
3	A	600	FAD	C1'-C2'-C3'	2.06	115.72	109.82
3	A	600	FAD	O2'-C2'-C1'	2.03	114.74	109.71

All (6) chirality outliers are listed below:

Mol	Chain	Res	Type	Atom
3	B	600	FAD	C4B
3	B	600	FAD	C2'
3	B	600	FAD	C3B
3	A	600	FAD	C4B
3	A	600	FAD	C2'
3	A	600	FAD	C3B

There are no torsion outliers.

There are no ring outliers.

5.7 Other polymers ⓘ

There are no such residues in this entry.

5.8 Polymer linkage issues

There are no chain breaks in this entry.

6 Fit of model and data ⓘ

6.1 Protein, DNA and RNA chains ⓘ

In the following table, the column labelled ‘#RSRZ> 2’ contains the number (and percentage) of RSRZ outliers, followed by percent RSRZ outliers for the chain as percentile scores relative to all X-ray entries and entries of similar resolution. The OWAB column contains the minimum, median, 95th percentile and maximum values of the occupancy-weighted average B-factor per residue. The column labelled ‘Q< 0.9’ lists the number of (and percentage) of residues with an average occupancy less than 0.9.

Mol	Chain	Analysed	<RSRZ>	#RSRZ>2	OWAB(Å ²)	Q<0.9
1	A	481/495 (97%)	-0.22	6 (1%) 75 73	16, 24, 36, 52	8 (1%)
1	B	478/495 (96%)	-0.23	3 (0%) 86 87	16, 24, 40, 49	19 (3%)
All	All	959/990 (96%)	-0.23	9 (0%) 79 81	16, 24, 38, 52	27 (2%)

All (9) RSRZ outliers are listed below:

Mol	Chain	Res	Type	RSRZ
1	A	487	THR	4.0
1	A	38	GLY	3.5
1	B	287[A]	ASP	3.3
1	A	1	MET	2.8
1	A	39	PRO	2.7
1	B	1	MET	2.5
1	A	31	ILE	2.2
1	A	26	SER	2.1
1	B	486	GLY	2.1

6.2 Non-standard residues in protein, DNA, RNA chains ⓘ

There are no non-standard protein/DNA/RNA residues in this entry.

6.3 Carbohydrates ⓘ

There are no carbohydrates in this entry.

6.4 Ligands ⓘ

In the following table, the Atoms column lists the number of modelled atoms in the group and the number defined in the chemical component dictionary. LLDF column lists the quality of electron

density of the group with respect to its neighbouring residues in protein, DNA or RNA chains. The B-factors column lists the minimum, median, 95th percentile and maximum values of B factors of atoms in the group. The column labelled 'Q < 0.9' lists the number of atoms with occupancy less than 0.9.

Mol	Type	Chain	Res	Atoms	RSR	LLDF	B-factors(Å ²)	Q<0.9
4	EDO	B	604	4/4	0.17	11.24	39,40,40,40	0
4	EDO	A	602	4/4	0.23	11.20	30,30,31,31	0
2	PRO	A	601	8/8	0.23	6.06	37,37,37,37	0
4	EDO	B	602	4/4	0.25	5.55	31,31,32,32	0
2	PRO	B	601	8/8	0.18	1.50	33,34,34,34	0
4	EDO	A	604	4/4	0.13	1.03	28,30,31,32	0
4	EDO	B	603	4/4	0.12	0.92	39,39,40,41	0
3	FAD	B	600	53/53	0.13	0.27	18,21,28,29	0
3	FAD	A	600	53/53	0.11	-0.21	18,21,24,28	0
4	EDO	A	603	4/4	0.07	-0.42	23,23,24,25	0

6.5 Other polymers ⓘ

There are no such residues in this entry.