



Full wwPDB X-ray Structure Validation Report ⓘ

Feb 27, 2014 – 12:18 AM GMT

PDB ID : 2WN9
Title : CRYSTAL STRUCTURE OF APLYSIA ACHBP IN COMPLEX WITH 4-0H-DMXBA
Authors : Sulzenbacher, G.; Hibbs, R.; Shi, J.; Talley, T.; Conrod, S.; Kem, W.; Taylor, P.; Marchot, P.; Bourne, Y.
Deposited on : 2009-07-07
Resolution : 1.75 Å(reported)

This is a full wwPDB validation report for a publicly released PDB entry.
We welcome your comments at validation@mail.wwpdb.org
A user guide is available at <http://wwpdb.org/ValidationPDFNotes.html>

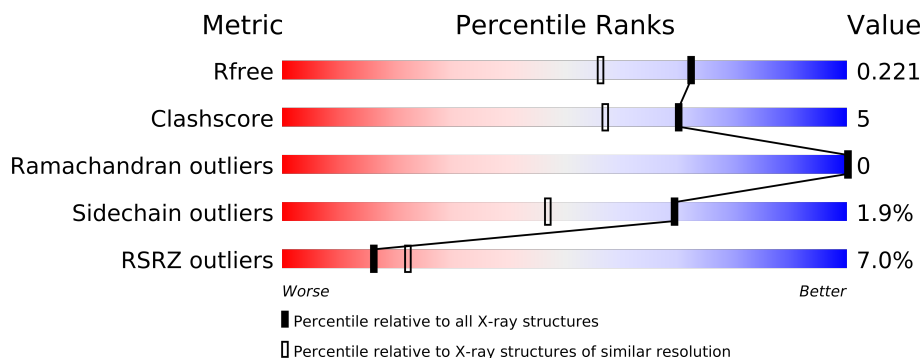
The following versions of software and data (see [references](#)) were used in the production of this report:

MolProbity : 4.02b-467
Mogul : 1.15 2013
Xtriage (Phenix) : dev-1323
EDS : stable22639
Percentile statistics : 21963
Refmac : 5.8.0049
CCP4 : 6.3.0 (Settle)
Ideal geometry (proteins) : Engh & Huber (2001)
Ideal geometry (DNA, RNA) : Parkinson et. al. (1996)
Validation Pipeline (wwPDB-VP) : stable22683

1 Overall quality at a glance

The reported resolution of this entry is 1.75 Å.

Percentile scores (ranging between 0-100) for global validation metrics of the entry are shown in the following graphic. The table shows the number of entries on which the scores are based.



Metric	Whole archive (#Entries)	Similar resolution (#Entries, resolution range(Å))
R_{free}	66092	1134 (1.76-1.76)
Clashscore	79885	1304 (1.76-1.76)
Ramachandran outliers	78287	1288 (1.76-1.76)
Sidechain outliers	78261	1288 (1.76-1.76)
RSRZ outliers	66119	1135 (1.76-1.76)

The table below summarises the geometric issues observed across the polymeric chains and their fit to the electron density. The red, orange, yellow and green segments on the lower bar indicate the fraction of residues that contain outliers for ≥ 3 , 2, 1 and 0 types of geometric quality criteria. The upper red bar (where present) indicates the fraction of residues that have poor fit to the electron density.

Mol	Chain	Length	Quality of chain
1	A	228	
1	B	228	
1	C	228	
1	D	228	
1	E	228	

The following table lists non-polymeric compounds that are outliers for geometric or electron-density-fit criteria:

Mol	Type	Chain	Res	Geometry	Electron density
2	ZY5	D	301	-	X
4	NAG	B	401	-	X

2 Entry composition i

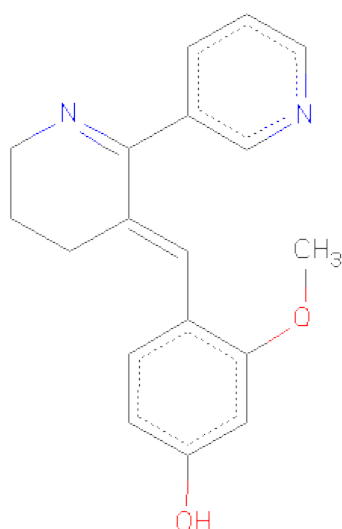
There are 5 unique types of molecules in this entry. The entry contains 9583 atoms, of which 0 are hydrogen and 0 are deuterium.

In the tables below, the ZeroOcc column contains the number of atoms modelled with zero occupancy, the AltConf column contains the number of residues with at least one atom in alternate conformation and the Trace column contains the number of residues modelled with at most 2 atoms.

- Molecule 1 is a protein called SOLUBLE ACETYLCHOLINE RECEPTOR.

Mol	Chain	Residues	Atoms					ZeroOcc	AltConf	Trace
1	A	209	Total	C	N	O	S	0	12	0
			1739	1105	288	336	10			
1	B	211	Total	C	N	O	S	0	6	0
			1714	1086	279	339	10			
1	C	214	Total	C	N	O	S	0	10	0
			1765	1115	292	349	9			
1	D	205	Total	C	N	O	S	0	5	0
			1671	1058	279	327	7			
1	E	214	Total	C	N	O	S	0	3	0
			1729	1092	282	346	9			

- Molecule 2 is 4-[(E)-5,6-DIHYDRO-2,3'-BIPYRIDIN-3(4H)-YLIDENEMETHYL]-3-METHOXYPHENOL (three-letter code: ZY5) (formula: C₁₈H₁₈N₂O₂).



Mol	Chain	Residues	Atoms				ZeroOcc	AltConf
2	A	1	Total	C	N	O	0	0
			22	18	2	2		

Continued on next page...

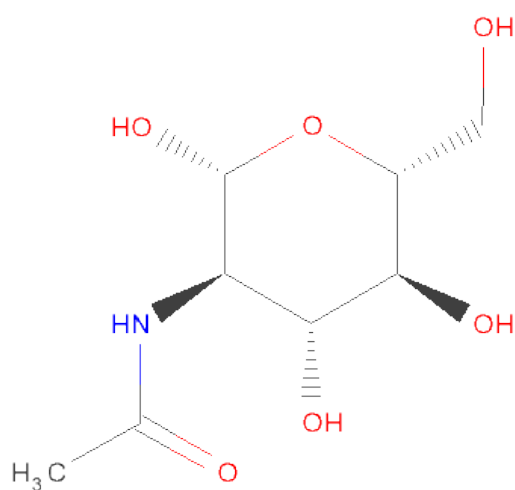
Continued from previous page...

Mol	Chain	Residues	Atoms				ZeroOcc	AltConf
2	B	1	Total	C	N	O	0	0
			22	18	2	2		
2	C	1	Total	C	N	O	0	0
			22	18	2	2		
2	D	1	Total	C	N	O	0	0
			22	18	2	2		
2	E	1	Total	C	N	O	0	0
			22	18	2	2		

- Molecule 3 is a polymer of unknown type called SUGAR (5-MER).

Mol	Chain	Residues	Atoms				ZeroOcc	AltConf
3	A	5	Total	C	N	O	0	0
			61	34	2	25		

- Molecule 4 is SUGAR (N-ACETYL-D-GLUCOSAMINE) (three-letter code: NAG) (formula: $C_8H_{15}NO_6$).



Mol	Chain	Residues	Atoms				ZeroOcc	AltConf
4	B	1	Total	C	N	O	0	0
			14	8	1	5		

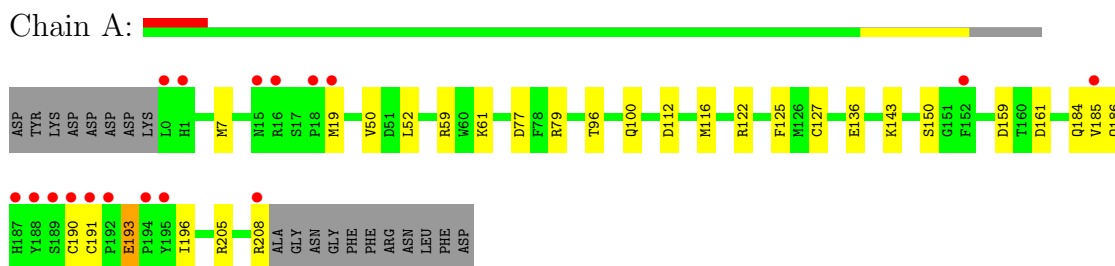
- Molecule 5 is water.

Mol	Chain	Residues	Atoms		ZeroOcc	AltConf
5	A	179	Total 179	O 179	0	0
5	B	150	Total 150	O 150	0	0
5	C	148	Total 148	O 148	0	0
5	D	142	Total 142	O 142	0	0
5	E	161	Total 161	O 161	0	0

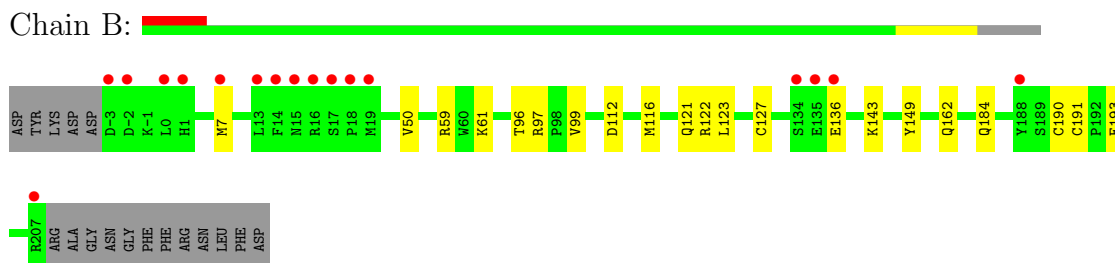
3 Residue-property plots

These plots are drawn for all protein, RNA and DNA chains in the entry. The first graphic for a chain summarises the proportions of errors displayed in the second graphic. The second graphic shows the sequence view annotated by issues in geometry and electron density. Residues are color-coded according to the number of geometric quality criteria for which they contain at least one outlier: green = 0, yellow = 1, orange = 2 and red = 3 or more. A red dot above a residue indicates a poor fit to the electron density ($RSRZ > 2$). Stretches of 2 or more consecutive residues without any outlier are shown as a green connector. Residues present in the sample, but not in the model, are shown in grey.

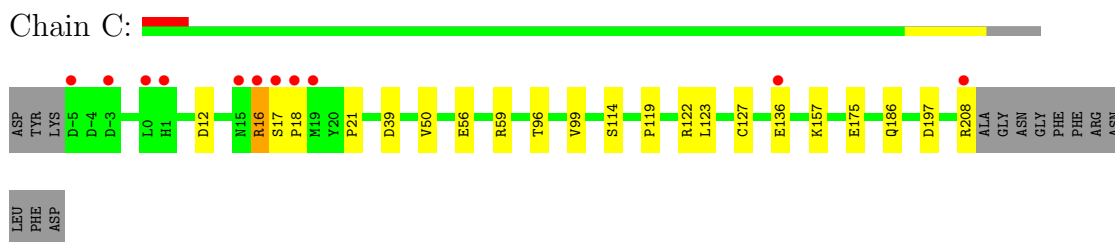
• Molecule 1: SOLUBLE ACETYLCHOLINE RECEPTOR



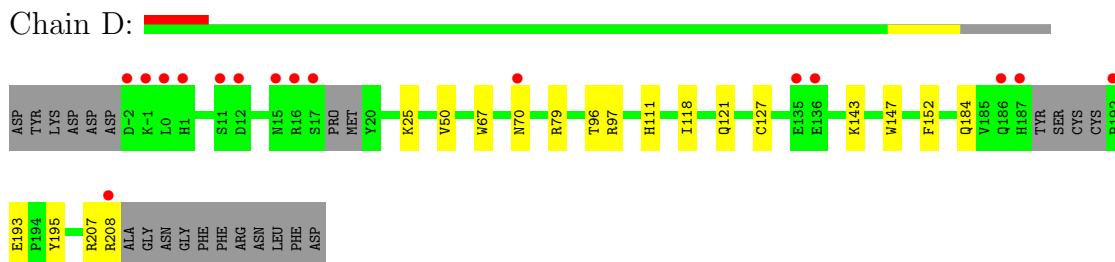
• Molecule 1: SOLUBLE ACETYLCHOLINE RECEPTOR



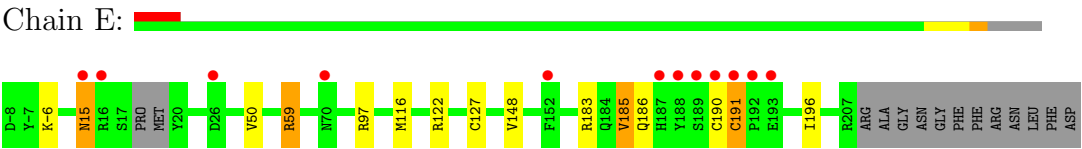
• Molecule 1: SOLUBLE ACETYLCHOLINE RECEPTOR



• Molecule 1: SOLUBLE ACETYLCHOLINE RECEPTOR



● Molecule 1: SOLUBLE ACETYLCHOLINE RECEPTOR



4 Data and refinement statistics

Property	Value	Source
Space group	P 21 21 21	Depositor
Cell constants a, b, c, α , β , γ	86.91Å 115.39Å 130.61Å 90.00° 90.00° 90.00°	Depositor
Resolution (Å)	20.00 – 1.75 43.24 – 1.75	Depositor EDS
% Data completeness (in resolution range)	99.9 (20.00-1.75) 99.9 (43.24-1.75)	Depositor EDS
R_{merge}	0.05	Depositor
R_{sym}	(Not available)	Depositor
$\langle I/\sigma(I) \rangle$ ¹	3.19 (at 1.75Å)	Xtriage
Refinement program	REFMAC 5.2.0005	Depositor
R, R_{free}	0.170 , 0.203 0.194 , 0.221	Depositor DCC
R_{free} test set	6581 reflections (4.97%)	DCC
Wilson B-factor (Å ²)	23.1	Xtriage
Anisotropy	0.290	Xtriage
Bulk solvent k_{sol} (e/Å ³), B_{sol} (Å ²)	0.37 , 43.9	EDS
Estimated twinning fraction	No twinning to report.	Xtriage
L-test for twinning	$\langle L \rangle = 0.49$, $\langle L^2 \rangle = 0.33$	Xtriage
Outliers	0 of 132440 reflections	Xtriage
F_o, F_c correlation	0.96	EDS
Total number of atoms	9583	wwPDB-VP
Average B, all atoms (Å ²)	32.0	wwPDB-VP

Xtriage's analysis on translational NCS is as follows: *The largest off-origin peak in the Patterson function is 3.40% of the height of the origin peak. No significant pseudotranslation is detected.*

¹Intensities estimated from amplitudes.

5 Model quality ⓘ

5.1 Standard geometry ⓘ

Bond lengths and bond angles in the following residue types are not validated in this section: MAN, ZY5, BMA, NAG

The Z score for a bond length (or angle) is the number of standard deviations the observed value is removed from the expected value. A bond length (or angle) with $|Z| > 5$ is considered an outlier worth inspection. RMSZ is the root-mean-square of all Z scores of the bond lengths (or angles).

Mol	Chain	Bond lengths		Bond angles	
		RMSZ	$\# Z > 5$	RMSZ	$\# Z > 5$
1	A	0.64	0/1816	0.78	2/2471 (0.1%)
1	B	0.69	0/1773	0.79	0/2417
1	C	0.65	0/1836	0.80	1/2501 (0.0%)
1	D	0.62	0/1723	0.79	2/2342 (0.1%)
1	E	0.66	1/1778 (0.1%)	0.75	1/2421 (0.0%)
All	All	0.65	1/8926 (0.0%)	0.78	6/12152 (0.0%)

All (1) bond length outliers are listed below:

Mol	Chain	Res	Type	Atoms	Z	Observed(Å)	Ideal(Å)
1	E	191	CYS	CB-SG	6.29	1.93	1.82

All (6) bond angle outliers are listed below:

Mol	Chain	Res	Type	Atoms	Z	Observed(°)	Ideal(°)
1	A	77	ASP	CB-CG-OD1	5.64	123.38	118.30
1	E	183	ARG	NE-CZ-NH1	5.52	123.06	120.30
1	D	97[A]	ARG	NE-CZ-NH1	5.51	123.06	120.30
1	D	97[B]	ARG	NE-CZ-NH1	5.51	123.06	120.30
1	C	39	ASP	CB-CG-OD1	5.42	123.17	118.30
1	A	205	ARG	NE-CZ-NH1	-5.19	117.71	120.30

There are no chirality outliers.

There are no planarity outliers.

5.2 Close contacts ⓘ

In the following table, the Non-H and H(model) columns list the number of non-hydrogen atoms and hydrogen atoms in the chain respectively. The H(added) column lists the number of hydrogens

added by MolProbity. The Clashes column lists the number of clashes within the asymmetric unit, and the number in parentheses is this value normalized per 1000 atoms of the molecule in the chain. The Symm-Clashes column gives symmetry related clashes, in the same way as for the Clashes column.

Mol	Chain	Non-H	H(model)	H(added)	Clashes	Symm-Clashes
1	A	1739	0	1716	20	0
1	B	1714	0	1660	15	0
1	C	1765	0	1720	17	0
1	D	1671	0	1632	11	0
1	E	1729	0	1658	9	0
2	A	22	0	18	3	0
2	B	22	0	18	3	0
2	C	22	0	18	3	0
2	D	22	0	18	4	0
2	E	22	0	18	4	0
3	A	61	0	52	0	0
4	B	14	0	13	0	0
5	A	179	0	0	2	0
5	B	150	0	0	3	0
5	C	148	0	0	0	0
5	D	142	0	0	2	0
5	E	161	0	0	1	0
All	All	9583	0	8541	79	0

Clashscore is defined as the number of clashes calculated for the entry per 1000 atoms (including hydrogens) of the entry. The overall clashscore for this entry is 5.

All (79) close contacts within the same asymmetric unit are listed below.

Atom-1	Atom-2	Distance(Å)	Clash(Å)
1:A:59[B]:ARG:HD3	1:A:116[B]:MET:SD	2.09	0.91
1:A:19:MET:HA	5:A:2020:HOH:O	1.77	0.83
2:C:301:ZY5:H5	2:C:301:ZY5:H131	1.63	0.81
1:E:59:ARG:HD2	1:E:116[A]:MET:SD	2.21	0.80
1:D:121:GLN:OE1	5:D:2092:HOH:O	2.03	0.74
1:A:59[B]:ARG:NH1	1:A:159:ASP:OD1	2.20	0.74
1:A:100:GLN:HE22	1:B:97[B]:ARG:HH11	1.37	0.71
1:C:59[B]:ARG:HE	1:C:114[B]:SER:HB3	1.56	0.70
2:C:301:ZY5:H5	2:C:301:ZY5:C13	2.24	0.68
1:B:97[B]:ARG:NH1	5:B:2080:HOH:O	2.23	0.67
1:E:50:VAL:HG21	1:E:127:CYS:SG	2.37	0.65
1:C:208:ARG:N	1:C:208:ARG:HD2	2.13	0.63
2:B:301:ZY5:H5	2:B:301:ZY5:H132	1.81	0.63
1:E:185:VAL:HG13	1:E:196:ILE:CD1	2.31	0.60

Continued on next page...

Continued from previous page...

Atom-1	Atom-2	Distance(Å)	Clash(Å)
1:A:50:VAL:HG21	1:A:127:CYS:SG	2.43	0.59
2:B:301:ZY5:C5	2:B:301:ZY5:H132	2.33	0.58
1:A:52[B]:LEU:HD13	1:A:125:PHE:HE2	1.68	0.57
1:A:143:LYS:NZ	1:A:184:GLN:HE22	2.02	0.57
1:A:191:CYS:HB3	1:A:193:GLU:OE2	2.04	0.57
2:D:301:ZY5:H5	2:D:301:ZY5:H131	1.87	0.56
1:C:59[B]:ARG:CG	1:C:59[B]:ARG:HH21	2.20	0.55
1:C:59[B]:ARG:HH21	1:C:59[B]:ARG:HG2	1.71	0.55
1:E:15:ASN:HD22	1:E:15:ASN:N	2.05	0.54
1:A:7:MET:HG2	5:B:2004:HOH:O	2.07	0.54
2:D:301:ZY5:H5	2:D:301:ZY5:C13	2.38	0.54
1:A:61:LYS:HE2	1:A:112:ASP:O	2.08	0.54
1:B:50:VAL:HG21	1:B:127:CYS:SG	2.48	0.53
1:D:143:LYS:NZ	1:D:184:GLN:HE22	2.06	0.53
1:C:122:ARG:HD2	1:D:96:THR:O	2.10	0.52
1:A:59[B]:ARG:HD3	1:A:116[B]:MET:CE	2.39	0.52
2:B:301:ZY5:H5	2:B:301:ZY5:C13	2.40	0.51
1:A:96:THR:O	1:E:122:ARG:HD2	2.12	0.51
2:E:301:ZY5:H5	2:E:301:ZY5:C13	2.43	0.49
1:B:99[A]:VAL:HG22	1:B:123:LEU:HD13	1.95	0.49
1:B:121[A]:GLN:OE1	5:B:2101:HOH:O	2.19	0.49
1:E:50:VAL:CG2	1:E:127:CYS:SG	3.01	0.48
2:A:301:ZY5:H5	2:A:301:ZY5:C13	2.44	0.48
1:D:50:VAL:HG21	1:D:127:CYS:SG	2.54	0.47
1:C:99[B]:VAL:HG22	1:C:123:LEU:HD13	1.97	0.47
1:C:186[A]:GLN:HG2	1:C:197:ASP:OD1	2.15	0.47
1:C:59[B]:ARG:CG	1:C:59[B]:ARG:NH2	2.78	0.46
2:D:301:ZY5:C5	2:D:301:ZY5:C13	2.93	0.46
1:A:122:ARG:HD2	1:B:96:THR:O	2.15	0.46
1:D:118:ILE:HD13	2:E:301:ZY5:H221	1.97	0.46
1:A:59[B]:ARG:HD3	1:A:116[B]:MET:HE1	1.98	0.46
1:B:61:LYS:HE3	1:B:112:ASP:O	2.15	0.46
1:C:50:VAL:HG21	1:C:127:CYS:SG	2.55	0.45
1:D:193:GLU:HG2	1:D:195:TYR:CE2	2.51	0.45
1:B:122:ARG:HD2	1:C:96:THR:O	2.17	0.45
1:A:79:ARG:HD3	1:B:149:TYR:CE1	2.52	0.45
1:A:190:CYS:SG	1:A:191:CYS:N	2.90	0.44
2:E:301:ZY5:C5	2:E:301:ZY5:H132	2.47	0.44
1:D:147:TRP:NE1	2:D:301:ZY5:H19	2.33	0.44
5:D:2078:HOH:O	1:E:97[B]:ARG:HD3	2.17	0.44
1:D:79:ARG:HG2	1:E:148:VAL:HG23	2.00	0.44
1:C:12:ASP:OD1	1:C:16:ARG:HD2	2.18	0.44

Continued on next page...

Continued from previous page...

Atom-1	Atom-2	Distance(Å)	Clash(Å)
2:E:301:ZY5:H132	2:E:301:ZY5:H5	2.00	0.44
1:C:12:ASP:HA	1:C:16:ARG:HD2	1.99	0.44
1:A:185:VAL:HG13	1:A:196:ILE:CD1	2.48	0.44
1:B:59:ARG:HD2	1:B:116[A]:MET:CE	2.49	0.43
2:A:301:ZY5:C13	2:A:301:ZY5:C5	2.96	0.43
1:C:186[A]:GLN:CG	1:C:197:ASP:OD1	2.67	0.43
1:B:191:CYS:HB3	1:B:193:GLU:OE2	2.19	0.42
1:B:143:LYS:HE2	1:B:184:GLN:HE22	1.85	0.42
2:A:301:ZY5:H5	2:A:301:ZY5:H131	2.02	0.42
1:A:50:VAL:CG2	1:A:127:CYS:SG	3.07	0.42
1:D:143:LYS:HZ2	1:D:184:GLN:HE22	1.66	0.42
2:C:301:ZY5:C13	2:C:301:ZY5:C5	2.94	0.42
1:C:17:SER:HA	1:C:18:PRO:HD3	1.89	0.41
1:B:190:CYS:SG	1:B:191:CYS:N	2.93	0.41
1:C:175:GLU:OE2	1:C:208:ARG:HD3	2.21	0.41
1:B:7:MET:CE	1:C:21:PRO:HD3	2.51	0.41
1:C:56:GLU:O	1:C:119:PRO:HD2	2.21	0.41
1:D:25:LYS:HG3	1:D:152:PHE:HB3	2.03	0.41
1:E:-6:LYS:NZ	5:E:2006:HOH:O	2.54	0.41
1:A:150:SER:CB	1:A:193:GLU:HG3	2.50	0.40
1:B:99[A]:VAL:HG22	1:B:123:LEU:CD1	2.51	0.40
1:A:161:ASP:HB3	5:A:2148:HOH:O	2.22	0.40
1:D:67:TRP:CZ3	1:D:111:HIS:HA	2.55	0.40

There are no symmetry-related clashes.

5.3 Torsion angles

5.3.1 Protein backbone ⓘ

In the following table, the Percentiles column shows the percent Ramachandran outliers of the chain as a percentile score with respect to all X-ray entries followed by that with respect to entries of similar resolution. The Analysed column shows the number of residues for which the backbone conformation was analysed, and the total number of residues.

Mol	Chain	Analysed	Favoured	Allowed	Outliers	Percentiles	
1	A	219/228 (96%)	216 (99%)	3 (1%)	0	100	100
1	B	215/228 (94%)	212 (99%)	3 (1%)	0	100	100
1	C	222/228 (97%)	219 (99%)	3 (1%)	0	100	100
1	D	204/228 (90%)	202 (99%)	2 (1%)	0	100	100

Continued on next page...

Continued from previous page...

Mol	Chain	Analysed	Favoured	Allowed	Outliers	Percentiles	
1	E	213/228 (93%)	212 (100%)	1 (0%)	0	100	100
All	All	1073/1140 (94%)	1061 (99%)	12 (1%)	0	100	100

There are no Ramachandran outliers to report.

5.3.2 Protein sidechains ⓘ

In the following table, the Percentiles column shows the percent sidechain outliers of the chain as a percentile score with respect to all X-ray entries followed by that with respect to entries of similar resolution. The Analysed column shows the number of residues for which the sidechain conformation was analysed, and the total number of residues.

Mol	Chain	Analysed	Rotameric	Outliers	Percentiles	
1	A	202/206 (98%)	198 (98%)	4 (2%)	68	43
1	B	198/206 (96%)	196 (99%)	2 (1%)	85	72
1	C	205/206 (100%)	202 (98%)	3 (2%)	76	59
1	D	191/206 (93%)	188 (98%)	3 (2%)	75	55
1	E	198/206 (96%)	192 (97%)	6 (3%)	53	25
All	All	994/1030 (96%)	976 (98%)	18 (2%)	69	50

All (18) residues with a non-rotameric sidechain are listed below:

Mol	Chain	Res	Type
1	A	136	GLU
1	A	186	GLN
1	A	193	GLU
1	A	208	ARG
1	B	136	GLU
1	B	162	GLN
1	C	16	ARG
1	C	136	GLU
1	C	157	LYS
1	D	70	ASN
1	D	207	ARG
1	D	208	ARG
1	E	15	ASN
1	E	59	ARG
1	E	185	VAL
1	E	186	GLN

Continued on next page...

Continued from previous page...

Mol	Chain	Res	Type
1	E	190	CYS
1	E	191	CYS

Some sidechains can be flipped to improve hydrogen bonding and reduce clashes. All (9) such sidechains are listed below:

Mol	Chain	Res	Type
1	A	15	ASN
1	A	100	GLN
1	A	184	GLN
1	B	15	ASN
1	B	57	GLN
1	B	70	ASN
1	C	184	GLN
1	D	184	GLN
1	E	15	ASN

5.3.3 RNA ⓘ

There are no RNA chains in this entry.

5.4 Non-standard residues in protein, DNA, RNA chains ⓘ

There are no non-standard protein/DNA/RNA residues in this entry.

5.5 Carbohydrates ⓘ

5 carbohydrates are modelled in this entry.

In the following table, the Counts columns list the number of bonds (or angles) for which Mogul statistics could be retrieved, the number of bonds (or angles) that are observed in the model and the number of bonds (or angles) that are defined in the chemical component dictionary. The Link column lists molecule types, if any, to which the group is linked. The Z score for a bond length (or angle) is the number of standard deviations the observed value is removed from the expected value. A bond length (or angle) with $|Z| > 2$ is considered an outlier worth inspection. RMSZ is the root-mean-square of all Z scores of the bond lengths (or angles).

Mol	Type	Chain	Res	Link	Bond lengths			Bond angles		
					Counts	RMSZ	$\# Z > 2$	Counts	RMSZ	$\# Z > 2$
3	NAG	A	401	1,3	12,14,15	0.33	0	15,19,21	0.97	1 (6%)
3	NAG	A	402	3	12,14,15	0.41	0	15,19,21	1.30	2 (13%)

Mol	Type	Chain	Res	Link	Bond lengths			Bond angles		
					Counts	RMSZ	# Z > 2	Counts	RMSZ	# Z > 2
3	BMA	A	403	3	10,11,12	0.39	0	11,15,17	0.80	0
3	MAN	A	404	3	10,11,12	0.60	0	11,15,17	1.47	4 (36%)
3	MAN	A	405	3	10,11,12	0.53	0	11,15,17	1.27	1 (9%)

In the following table, the Chirals column lists the number of chiral outliers, the number of chiral centers analysed, the number of these observed in the model and the number defined in the chemical component dictionary. Similar counts are reported in the Torsion and Rings columns. '-' means no outliers of that kind were identified.

Mol	Type	Chain	Res	Link	Chirals	Torsions	Rings
3	NAG	A	401	1,3	-	0/6/23/26	0/1/1/1
3	NAG	A	402	3	-	0/6/23/26	0/1/1/1
3	BMA	A	403	3	-	0/2/19/22	0/1/1/1
3	MAN	A	404	3	-	0/2/19/22	0/1/1/1
3	MAN	A	405	3	-	0/2/19/22	0/1/1/1

There are no bond length outliers.

All (8) bond angle outliers are listed below:

Mol	Chain	Res	Type	Atoms	Z	Observed(°)	Ideal(°)
3	A	402	NAG	C3-C2-N2	-3.33	106.69	111.76
3	A	405	MAN	O5-C5-C6	2.73	109.84	106.98
3	A	404	MAN	O5-C5-C6	2.72	109.83	106.98
3	A	404	MAN	O3-C3-C2	2.27	114.10	109.94
3	A	402	NAG	C2-N2-C7	-2.21	119.39	123.09
3	A	401	NAG	C4-C3-C2	-2.14	106.08	111.32
3	A	404	MAN	C3-C4-C5	-2.08	106.49	110.20
3	A	404	MAN	C4-C3-C2	-2.04	107.77	110.50

There are no chirality outliers.

There are no torsion outliers.

There are no ring outliers.

5.6 Ligand geometry ⓘ

6 ligands are modelled in this entry.

In the following table, the Counts columns list the number of bonds (or angles) for which Mogul statistics could be retrieved, the number of bonds (or angles) that are observed in the model and the number of bonds (or angles) that are defined in the chemical component dictionary. The Link

column lists molecule types, if any, to which the group is linked. The Z score for a bond length (or angle) is the number of standard deviations the observed value is removed from the expected value. A bond length (or angle) with $|Z| > 2$ is considered an outlier worth inspection. RMSZ is the root-mean-square of all Z scores of the bond lengths (or angles).

Mol	Type	Chain	Res	Link	Bond lengths			Bond angles		
					Counts	RMSZ	# Z > 2	Counts	RMSZ	# Z > 2
2	ZY5	A	301	-	24,24,24	0.99	1 (4%)	32,32,32	3.46	7 (21%)
2	ZY5	B	301	-	24,24,24	1.01	2 (8%)	32,32,32	3.50	9 (28%)
4	NAG	B	401	1	12,14,15	0.43	0	15,19,21	1.32	2 (13%)
2	ZY5	C	301	-	24,24,24	0.69	0	32,32,32	2.66	7 (21%)
2	ZY5	D	301	-	24,24,24	1.17	3 (12%)	32,32,32	3.02	7 (21%)
2	ZY5	E	301	-	24,24,24	0.98	2 (8%)	32,32,32	3.28	7 (21%)

In the following table, the Chirals column lists the number of chiral outliers, the number of chiral centers analysed, the number of these observed in the model and the number defined in the chemical component dictionary. Similar counts are reported in the Torsion and Rings columns. '-' means no outliers of that kind were identified.

Mol	Type	Chain	Res	Link	Chirals	Torsions	Rings
2	ZY5	A	301	-	-	0/10/21/21	0/3/3/3
2	ZY5	B	301	-	-	0/10/21/21	0/3/3/3
4	NAG	B	401	1	-	0/6/23/26	0/1/1/1
2	ZY5	C	301	-	-	0/10/21/21	0/3/3/3
2	ZY5	D	301	-	-	0/10/21/21	0/3/3/3
2	ZY5	E	301	-	-	0/10/21/21	0/3/3/3

All (8) bond length outliers are listed below:

Mol	Chain	Res	Type	Atoms	Z	Observed(Å)	Ideal(Å)
2	B	301	ZY5	C4-C7	3.18	1.51	1.46
2	A	301	ZY5	C4-C7	3.04	1.51	1.46
2	D	301	ZY5	C4-C7	2.97	1.51	1.46
2	D	301	ZY5	C9-N10	-2.90	1.27	1.29
2	E	301	ZY5	C9-N10	-2.71	1.27	1.29
2	E	301	ZY5	C4-C7	2.55	1.50	1.46
2	B	301	ZY5	C9-N10	-2.14	1.27	1.29
2	D	301	ZY5	C14-C9	2.12	1.51	1.48

All (39) bond angle outliers are listed below:

Mol	Chain	Res	Type	Atoms	Z	Observed(°)	Ideal(°)
2	B	301	ZY5	C11-N10-C9	16.70	130.80	116.06

Continued on next page...

Continued from previous page...

Mol	Chain	Res	Type	Atoms	Z	Observed(°)	Ideal(°)
2	A	301	ZY5	C11-N10-C9	16.30	130.45	116.06
2	E	301	ZY5	C11-N10-C9	15.67	129.89	116.06
2	C	301	ZY5	C11-N10-C9	12.12	126.76	116.06
2	D	301	ZY5	C11-N10-C9	11.31	126.05	116.06
2	D	301	ZY5	C8-C9-N10	-9.16	115.32	124.32
2	A	301	ZY5	C8-C9-N10	-6.94	117.50	124.32
2	B	301	ZY5	C8-C9-N10	-6.41	118.03	124.32
2	E	301	ZY5	C8-C9-N10	-6.11	118.32	124.32
2	A	301	ZY5	C22-O21-C3	5.62	125.89	117.59
2	C	301	ZY5	C8-C9-N10	-4.93	119.47	124.32
2	E	301	ZY5	C22-O21-C3	4.89	124.82	117.59
2	D	301	ZY5	C22-O21-C3	4.85	124.76	117.59
2	B	301	ZY5	C22-O21-C3	4.24	123.86	117.59
2	D	301	ZY5	C14-C9-C8	3.92	127.19	122.38
2	C	301	ZY5	O21-C3-C4	3.62	119.64	115.86
2	D	301	ZY5	C12-C11-N10	-3.29	102.64	113.80
2	A	301	ZY5	C12-C11-N10	-2.89	104.02	113.80
4	B	401	NAG	O5-C5-C6	2.87	109.99	106.98
2	D	301	ZY5	C13-C8-C7	-2.72	122.44	125.18
4	B	401	NAG	C2-N2-C7	2.66	127.55	123.09
2	B	301	ZY5	C4-C7-C8	-2.62	123.98	128.44
2	A	301	ZY5	C4-C7-C8	-2.49	124.20	128.44
2	C	301	ZY5	C22-O21-C3	2.40	121.14	117.59
2	A	301	ZY5	C14-C9-C8	2.40	125.32	122.38
2	C	301	ZY5	C12-C11-N10	-2.31	105.96	113.80
2	C	301	ZY5	O21-C3-C2	-2.29	120.25	124.23
2	D	301	ZY5	C4-C7-C8	-2.27	124.57	128.44
2	E	301	ZY5	C16-C15-C14	-2.27	117.37	120.32
2	B	301	ZY5	C12-C11-N10	-2.20	106.33	113.80
2	E	301	ZY5	C12-C11-N10	-2.19	106.39	113.80
2	A	301	ZY5	C17-N18-C19	2.16	120.72	116.85
2	E	301	ZY5	C14-C9-C8	2.08	124.92	122.38
2	B	301	ZY5	C17-N18-C19	2.08	120.58	116.85
2	B	301	ZY5	C19-C14-C9	-2.05	117.13	121.05
2	C	301	ZY5	C17-N18-C19	2.03	120.49	116.85
2	E	301	ZY5	C12-C13-C8	-2.02	108.30	112.28
2	B	301	ZY5	O21-C3-C4	2.01	117.97	115.86
2	B	301	ZY5	C16-C15-C14	-2.01	117.71	120.32

There are no chirality outliers.

There are no torsion outliers.

There are no ring outliers.

5.7 Other polymers ⓘ

There are no such residues in this entry.

5.8 Polymer linkage issues

There are no chain breaks in this entry.

6 Fit of model and data ⓘ

6.1 Protein, DNA and RNA chains ⓘ

In the following table, the column labelled ‘#RSRZ> 2’ contains the number (and percentage) of RSRZ outliers, followed by percent RSRZ outliers for the chain as percentile scores relative to all X-ray entries and entries of similar resolution. The OWAB column contains the minimum, median, 95th percentile and maximum values of the occupancy-weighted average B-factor per residue. The column labelled ‘Q< 0.9’ lists the number of (and percentage) of residues with an average occupancy less than 0.9.

Mol	Chain	Analysed	<RSRZ>	#RSRZ>2	OWAB(Å ²)	Q<0.9
1	A	209/228 (91%)	0.31	17 (8%) 12 16	16, 27, 60, 83	0
1	B	211/228 (92%)	0.37	17 (8%) 12 16	15, 29, 58, 80	0
1	C	214/228 (93%)	0.21	11 (5%) 27 34	16, 28, 53, 71	0
1	D	205/228 (89%)	0.24	16 (7%) 13 18	17, 28, 61, 93	0
1	E	214/228 (93%)	0.40	12 (5%) 24 30	17, 29, 52, 80	0
All	All	1053/1140 (92%)	0.31	73 (6%) 16 22	15, 28, 58, 93	0

All (73) RSRZ outliers are listed below:

Mol	Chain	Res	Type	RSRZ
1	D	16	ARG	10.9
1	E	189	SER	8.5
1	B	18	PRO	8.4
1	C	19	MET	8.2
1	A	190	CYS	7.2
1	B	16	ARG	7.1
1	C	18	PRO	6.7
1	A	19	MET	6.0
1	B	19	MET	5.9
1	A	188	TYR	5.8
1	A	0	LEU	5.7
1	E	191	CYS	5.7
1	B	-3	ASP	5.6
1	E	16	ARG	5.5
1	B	15	ASN	5.2
1	A	191	CYS	4.9
1	B	0	LEU	4.8
1	E	190	CYS	4.6
1	B	1	HIS	4.5
1	D	15	ASN	4.5

Continued on next page...

Continued from previous page...

Mol	Chain	Res	Type	RSRZ
1	D	208	ARG	4.3
1	C	0	LEU	4.2
1	B	14	PHE	4.0
1	D	1	HIS	4.0
1	B	17	SER	3.8
1	A	1	HIS	3.7
1	A	189	SER	3.5
1	E	152	PHE	3.5
1	D	-2	ASP	3.4
1	E	193	GLU	3.4
1	D	187	HIS	3.2
1	C	208	ARG	3.2
1	A	187	HIS	3.2
1	D	70	ASN	3.1
1	E	192	PRO	3.0
1	E	188	TYR	3.0
1	D	17	SER	2.9
1	A	185	VAL	2.9
1	C	17	SER	2.8
1	E	15	ASN	2.8
1	A	195	TYR	2.7
1	D	136	GLU	2.7
1	A	208	ARG	2.7
1	B	-2	ASP	2.5
1	C	-3	ASP	2.5
1	E	26	ASP	2.5
1	D	135	GLU	2.5
1	D	11	SER	2.4
1	D	0	LEU	2.4
1	A	194	PRO	2.4
1	D	186	GLN	2.4
1	C	1	HIS	2.3
1	B	13	LEU	2.3
1	E	70	ASN	2.3
1	A	18	PRO	2.3
1	C	136	GLU	2.3
1	C	15	ASN	2.2
1	D	192	PRO	2.2
1	A	192	PRO	2.2
1	C	-5	ASP	2.2
1	B	188	TYR	2.2
1	A	16	ARG	2.1

Continued on next page...

Continued from previous page...

Mol	Chain	Res	Type	RSRZ
1	A	152	PHE	2.1
1	C	16	ARG	2.1
1	B	134	SER	2.1
1	B	135	GLU	2.1
1	A	15	ASN	2.1
1	D	12	ASP	2.1
1	B	207	ARG	2.1
1	B	7	MET	2.0
1	B	136	GLU	2.0
1	D	-1	LYS	2.0
1	E	187	HIS	2.0

6.2 Non-standard residues in protein, DNA, RNA chains ⓘ

There are no non-standard protein/DNA/RNA residues in this entry.

6.3 Carbohydrates ⓘ

In the following table, the Atoms column lists the number of modelled atoms in the group and the number defined in the chemical component dictionary. LLDF column lists the quality of electron density of the group with respect to its neighbouring residues in protein, DNA or RNA chains. The B-factors column lists the minimum, median, 95th percentile and maximum values of B factors of atoms in the group. The column labelled 'Q < 0.9' lists the number of atoms with occupancy less than 0.9.

Mol	Type	Chain	Res	Atoms	RSR	LLDF	B-factors(Å ²)	Q<0.9
3	NAG	A	401	14/15	0.29	28.08	44,48,57,58	0
3	MAN	A	404	11/12	0.30	2.02	43,45,47,49	0
3	BMA	A	403	11/12	0.18	-0.16	38,41,46,52	0
3	NAG	A	402	14/15	0.23	-	42,48,51,51	0
3	MAN	A	405	11/12	0.47	-	53,55,56,57	0

6.4 Ligands ⓘ

In the following table, the Atoms column lists the number of modelled atoms in the group and the number defined in the chemical component dictionary. LLDF column lists the quality of electron density of the group with respect to its neighbouring residues in protein, DNA or RNA chains. The B-factors column lists the minimum, median, 95th percentile and maximum values of B factors of atoms in the group. The column labelled 'Q < 0.9' lists the number of atoms with occupancy less than 0.9.

Mol	Type	Chain	Res	Atoms	RSR	LLDF	B-factors(\AA^2)	Q<0.9
2	ZY5	D	301	22/22	0.24	7.35	34,40,41,42	0
4	NAG	B	401	14/15	0.30	4.33	66,70,73,73	0
2	ZY5	A	301	22/22	0.14	0.62	30,32,35,36	0
2	ZY5	E	301	22/22	0.11	-0.04	29,33,34,35	0
2	ZY5	C	301	22/22	0.10	-0.15	23,29,32,32	0
2	ZY5	B	301	22/22	0.09	-0.92	25,30,34,36	0

6.5 Other polymers ⓘ

There are no such residues in this entry.