



Full wwPDB X-ray Structure Validation Report

Feb 27, 2014 – 12:16 AM GMT

PDB ID : 2WNJ
Title : CRYSTAL STRUCTURE OF APLYSIA ACHBP IN COMPLEX WITH DMXBA
Authors : Sulzenbacher, G.; Hibbs, R.; Shi, J.; Talley, T.; Conrod, S.; Kem, W.; Taylor, P.; Marchot, P.; Bourne, Y.
Deposited on : 2009-07-09
Resolution : 1.80 Å(reported)

This is a full wwPDB validation report for a publicly released PDB entry.
We welcome your comments at validation@mail.wwpdb.org
A user guide is available at <http://wwpdb.org/ValidationPDFNotes.html>

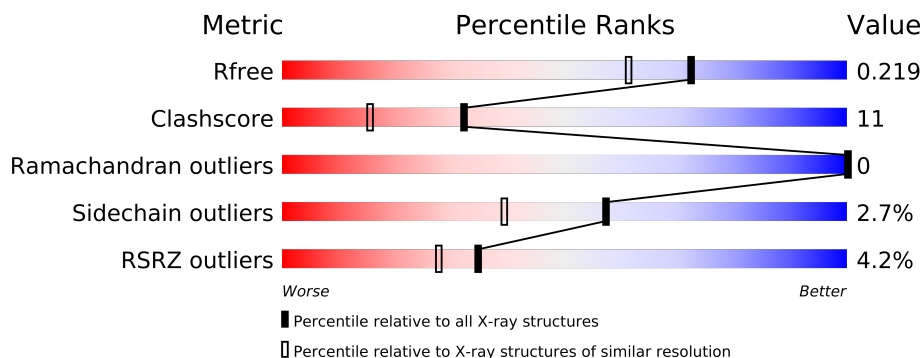
The following versions of software and data (see [references](#)) were used in the production of this report:

MolProbity : 4.02b-467
Mogul : 1.15 2013
Xtriage (Phenix) : dev-1323
EDS : stable22639
Percentile statistics : 21963
Refmac : 5.8.0049
CCP4 : 6.3.0 (Settle)
Ideal geometry (proteins) : Engh & Huber (2001)
Ideal geometry (DNA, RNA) : Parkinson et. al. (1996)
Validation Pipeline (wwPDB-VP) : stable22683

1 Overall quality at a glance

The reported resolution of this entry is 1.80 Å.

Percentile scores (ranging between 0-100) for global validation metrics of the entry are shown in the following graphic. The table shows the number of entries on which the scores are based.



Metric	Whole archive (#Entries)	Similar resolution (#Entries, resolution range(Å))
R_{free}	66092	3513 (1.80-1.80)
Clashscore	79885	4461 (1.80-1.80)
Ramachandran outliers	78287	4404 (1.80-1.80)
Sidechain outliers	78261	4403 (1.80-1.80)
RSRZ outliers	66119	3515 (1.80-1.80)

The table below summarises the geometric issues observed across the polymeric chains and their fit to the electron density. The red, orange, yellow and green segments on the lower bar indicate the fraction of residues that contain outliers for ≥ 3 , 2, 1 and 0 types of geometric quality criteria. The upper red bar (where present) indicates the fraction of residues that have poor fit to the electron density.

Mol	Chain	Length	Quality of chain
1	A	228	
1	B	228	
1	C	228	
1	D	228	
1	E	228	

The following table lists non-polymeric compounds that are outliers for geometric or electron-density-fit criteria:

Mol	Type	Chain	Res	Geometry	Electron density
2	ZY7	A	301[A]	-	X
2	ZY7	A	301[B]	-	X
2	ZY7	B	301	-	X

Continued on next page...

Continued from previous page...

Mol	Type	Chain	Res	Geometry	Electron density
2	ZY7	D	301[A]	-	X
2	ZY7	D	301[B]	-	X

2 Entry composition i

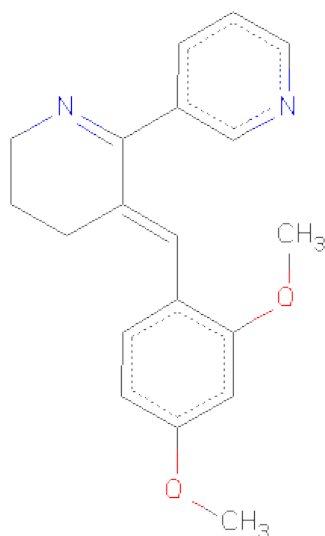
There are 5 unique types of molecules in this entry. The entry contains 10037 atoms, of which 0 are hydrogen and 0 are deuterium.

In the tables below, the ZeroOcc column contains the number of atoms modelled with zero occupancy, the AltConf column contains the number of residues with at least one atom in alternate conformation and the Trace column contains the number of residues modelled with at most 2 atoms.

- Molecule 1 is a protein called SOLUBLE ACETYLCHOLINE RECEPTOR.

Mol	Chain	Residues	Atoms					ZeroOcc	AltConf	Trace
1	A	209	Total	C	N	O	S	0	10	0
			1727	1098	283	336	10			
1	B	212	Total	C	N	O	S	0	8	0
			1746	1107	290	339	10			
1	C	214	Total	C	N	O	S	0	10	0
			1769	1120	291	347	11			
1	D	211	Total	C	N	O	S	0	8	0
			1733	1100	284	339	10			
1	E	217	Total	C	N	O	S	0	13	0
			1822	1162	297	353	10			

- Molecule 2 is (3E)-3-[(2,4-DIMETHOXYPHENYL)METHYLIDENE]-3,4,5,6-TETRAHYDRO-2,3'-BIPYRIDINE (three-letter code: ZY7) (formula: C₁₉H₂₀N₂O₂).



Mol	Chain	Residues	Atoms				ZeroOcc	AltConf
2	A	1	Total	C	N	O	0	1
			46	38	4	4		

Continued on next page...

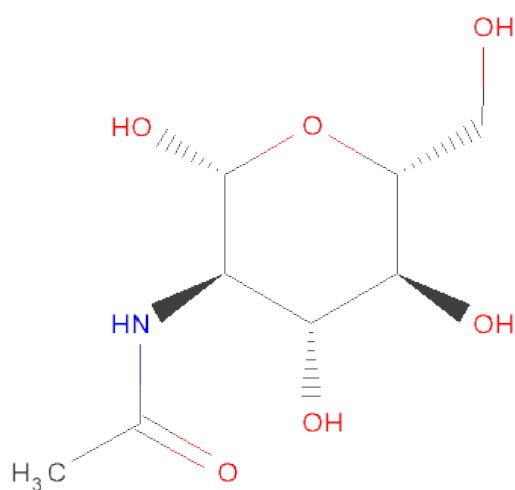
Continued from previous page...

Mol	Chain	Residues	Atoms				ZeroOcc	AltConf
2	B	1	Total	C	N	O	0	0
			23	19	2	2		
2	C	1	Total	C	N	O	0	0
			23	19	2	2		
2	D	1	Total	C	N	O	0	1
			46	38	4	4		
2	E	1	Total	C	N	O	0	1
			46	38	4	4		

- Molecule 3 is a polymer of unknown type called SUGAR (4-MER).

Mol	Chain	Residues	Atoms				ZeroOcc	AltConf
3	A	4	Total	C	N	O	0	0
			50	28	2	20		

- Molecule 4 is SUGAR (N-ACETYL-D-GLUCOSAMINE) (three-letter code: NAG) (formula: $C_8H_{15}NO_6$).

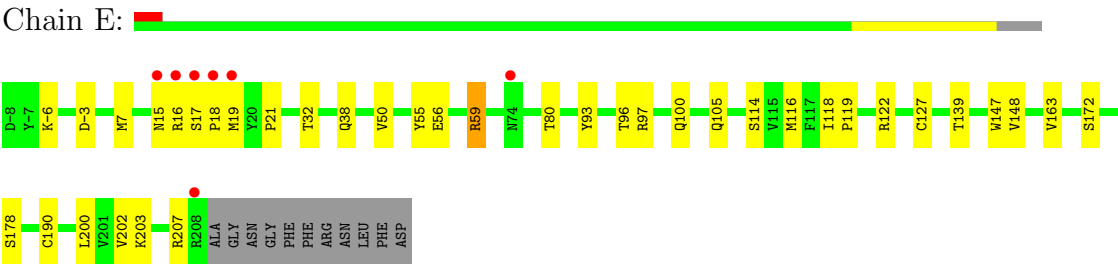


Mol	Chain	Residues	Atoms				ZeroOcc	AltConf
4	B	1	Total	C	N	O	0	0
			14	8	1	5		

- Molecule 5 is water.

Mol	Chain	Residues	Atoms		ZeroOcc	AltConf
5	A	214	Total 214	O 214	0	0
5	B	177	Total 177	O 177	0	0
5	C	200	Total 200	O 200	0	0
5	D	193	Total 193	O 193	0	0
5	E	208	Total 208	O 208	0	0

● Molecule 1: SOLUBLE ACETYLCHOLINE RECEPTOR



4 Data and refinement statistics

Property	Value	Source
Space group	P 21 21 21	Depositor
Cell constants a, b, c, α , β , γ	87.22Å 114.80Å 131.28Å 90.00° 90.00° 90.00°	Depositor
Resolution (Å)	20.00 – 1.80 47.71 – 1.80	Depositor EDS
% Data completeness (in resolution range)	99.8 (20.00-1.80) 99.8 (47.71-1.80)	Depositor EDS
R_{merge}	0.06	Depositor
R_{sym}	(Not available)	Depositor
$\langle I/\sigma(I) \rangle$ ¹	1.97 (at 1.79Å)	Xtriage
Refinement program	REFMAC 5.2.0019	Depositor
R, R_{free}	0.169 , 0.206 0.191 , 0.219	Depositor DCC
R_{free} test set	6071 reflections (4.97%)	DCC
Wilson B-factor (Å ²)	23.2	Xtriage
Anisotropy	0.242	Xtriage
Bulk solvent k_{sol} (e/Å ³), B_{sol} (Å ²)	0.36 , 45.5	EDS
Estimated twinning fraction	No twinning to report.	Xtriage
L-test for twinning	$\langle L \rangle = 0.49$, $\langle L^2 \rangle = 0.32$	Xtriage
Outliers	0 of 122182 reflections	Xtriage
F_o, F_c correlation	0.95	EDS
Total number of atoms	10037	wwPDB-VP
Average B, all atoms (Å ²)	35.0	wwPDB-VP

Xtriage's analysis on translational NCS is as follows: *The largest off-origin peak in the Patterson function is 4.59% of the height of the origin peak. No significant pseudotranslation is detected.*

¹Intensities estimated from amplitudes.

5 Model quality

5.1 Standard geometry

Bond lengths and bond angles in the following residue types are not validated in this section: ZY7, BMA, NAG, MAN

The Z score for a bond length (or angle) is the number of standard deviations the observed value is removed from the expected value. A bond length (or angle) with $|Z| > 5$ is considered an outlier worth inspection. RMSZ is the root-mean-square of all Z scores of the bond lengths (or angles).

Mol	Chain	Bond lengths		Bond angles	
		RMSZ	$\# Z > 5$	RMSZ	$\# Z > 5$
1	A	0.71	1/1799 (0.1%)	0.76	0/2451
1	B	0.69	1/1812 (0.1%)	0.76	2/2466 (0.1%)
1	C	0.67	0/1836	0.74	0/2496
1	D	0.76	0/1799	0.81	1/2450 (0.0%)
1	E	0.77	0/1902	0.79	0/2590
All	All	0.72	2/9148 (0.0%)	0.77	3/12453 (0.0%)

All (2) bond length outliers are listed below:

Mol	Chain	Res	Type	Atoms	Z	Observed(Å)	Ideal(Å)
1	A	56	GLU	CB-CG	-5.42	1.41	1.52
1	B	56	GLU	CB-CG	-5.05	1.42	1.52

All (3) bond angle outliers are listed below:

Mol	Chain	Res	Type	Atoms	Z	Observed(°)	Ideal(°)
1	B	59[A]	ARG	NE-CZ-NH1	6.02	123.31	120.30
1	B	59[B]	ARG	NE-CZ-NH1	6.02	123.31	120.30
1	D	68	ASP	CB-CG-OD1	5.61	123.35	118.30

There are no chirality outliers.

There are no planarity outliers.

5.2 Close contacts

In the following table, the Non-H and H(model) columns list the number of non-hydrogen atoms and hydrogen atoms in the chain respectively. The H(added) column lists the number of hydrogens added by MolProbity. The Clashes column lists the number of clashes within the asymmetric unit, and the number in parentheses is this value normalized per 1000 atoms of the molecule in the

chain. The Symm-Clashes column gives symmetry related clashes, in the same way as for the Clashes column.

Mol	Chain	Non-H	H(model)	H(added)	Clashes	Symm-Clashes
1	A	1727	0	1690	34	0
1	B	1746	0	1707	22	0
1	C	1769	0	1728	46	0
1	D	1733	0	1688	48	0
1	E	1822	0	1791	61	0
2	A	46	0	39	15	0
2	B	23	0	20	8	0
2	C	23	0	20	4	0
2	D	46	0	37	24	0
2	E	46	0	37	26	0
3	A	50	0	43	0	0
4	B	14	0	13	0	0
5	A	214	0	0	4	0
5	B	177	0	0	2	0
5	C	200	0	0	6	0
5	D	193	0	0	6	0
5	E	208	0	0	6	0
All	All	10037	0	8813	204	0

Clashscore is defined as the number of clashes calculated for the entry per 1000 atoms (including hydrogens) of the entry. The overall clashscore for this entry is 11.

All (204) close contacts within the same asymmetric unit are listed below.

Atom-1	Atom-2	Distance(Å)	Clash(Å)
1:E:93[A]:TYR:CE2	2:E:301[A]:ZY7:H121	1.12	1.61
1:E:93[A]:TYR:CE2	2:E:301[A]:ZY7:C12	2.03	1.40
1:D:57[B]:GLN:OE1	2:E:301[B]:ZY7:C2	1.76	1.33
1:E:93[A]:TYR:OH	2:E:301[A]:ZY7:H111	1.17	1.33
1:E:93[A]:TYR:OH	2:E:301[A]:ZY7:C11	1.81	1.29
1:D:57[B]:GLN:OE1	2:E:301[B]:ZY7:H2	1.35	1.18
1:E:93[A]:TYR:CZ	2:E:301[A]:ZY7:C11	2.29	1.14
1:C:118:ILE:HD12	2:D:301[B]:ZY7:C7	1.90	1.00
1:C:118:ILE:HD11	2:D:301[B]:ZY7:C3	1.92	0.99
1:C:118:ILE:CD1	2:D:301[B]:ZY7:C4	2.43	0.97
1:E:93[A]:TYR:CZ	2:E:301[A]:ZY7:H121	2.01	0.92
1:D:57[B]:GLN:CD	2:E:301[B]:ZY7:C1	2.33	0.91
1:C:118:ILE:CD1	2:D:301[B]:ZY7:C7	2.48	0.91
1:D:57[B]:GLN:HG3	1:D:118:ILE:CD1	2.00	0.91
1:E:93[A]:TYR:CZ	2:E:301[A]:ZY7:H112	2.03	0.90
1:E:200[B]:LEU:CD1	1:E:202[B]:VAL:HG23	2.02	0.90

Continued on next page...

Continued from previous page...

Atom-1	Atom-2	Distance(Å)	Clash(Å)
1:D:57[B]:GLN:OE1	2:E:301[B]:ZY7:C1	2.23	0.85
2:A:301[A]:ZY7:H132	2:A:301[A]:ZY7:H5	1.59	0.85
1:D:57[B]:GLN:CD	2:E:301[B]:ZY7:C2	2.46	0.84
1:E:93[A]:TYR:CD2	2:E:301[A]:ZY7:H121	2.07	0.83
1:C:59[B]:ARG:CG	1:C:59[B]:ARG:HH21	1.91	0.83
1:B:59[A]:ARG:HE	1:B:114:SER:HB2	1.43	0.82
2:A:301[B]:ZY7:C22	1:E:116[B]:MET:SD	2.69	0.80
1:A:157:LYS:NZ	5:A:2163:HOH:O	2.12	0.80
1:D:57[B]:GLN:HG3	1:D:118:ILE:HD12	1.62	0.79
1:B:7[B]:MET:HE2	1:C:21:PRO:HD3	1.66	0.78
1:E:59[B]:ARG:CG	1:E:59[B]:ARG:HH21	1.97	0.78
1:C:118:ILE:CD1	2:D:301[B]:ZY7:C3	2.61	0.77
1:E:93[A]:TYR:OH	2:E:301[A]:ZY7:H112	1.83	0.77
1:C:-6:LYS:N	1:C:-6:LYS:HD3	2.00	0.77
1:C:118:ILE:HD12	2:D:301[B]:ZY7:H7	1.67	0.77
1:B:59[B]:ARG:NH2	1:B:159:ASP:OD2	2.18	0.76
1:C:118:ILE:HD13	2:D:301[B]:ZY7:C4	2.14	0.75
1:E:93[A]:TYR:CZ	2:E:301[A]:ZY7:C12	2.53	0.75
1:E:59[B]:ARG:HE	1:E:114:SER:HB2	1.50	0.75
1:E:105:GLN:NE2	5:E:2127:HOH:O	2.22	0.72
1:D:159:ASP:OD2	5:D:2146:HOH:O	2.08	0.72
1:D:190:CYS:HB2	2:D:301[B]:ZY7:C4	2.20	0.72
1:C:59[B]:ARG:HH21	1:C:59[B]:ARG:HG3	1.53	0.71
1:A:57[B]:GLN:OE1	2:B:301:ZY7:C2	2.38	0.71
1:E:93[A]:TYR:HE2	2:E:301[A]:ZY7:C12	1.66	0.69
1:C:143[A]:LYS:NZ	5:C:2145:HOH:O	2.24	0.69
1:A:100:GLN:HE22	1:B:97[A]:ARG:HH21	1.39	0.68
2:A:301[B]:ZY7:O21	1:E:116[B]:MET:SD	2.51	0.68
1:D:57[A]:GLN:OE1	5:D:2063:HOH:O	0.68	0.68
1:E:93[A]:TYR:HE2	2:E:301[A]:ZY7:H121	0.86	0.68
2:C:301:ZY7:H131	2:C:301:ZY7:H5	1.77	0.67
1:E:105:GLN:OE1	5:E:2127:HOH:O	2.12	0.67
1:A:160:THR:OG1	5:A:2168:HOH:O	2.11	0.67
1:E:200[B]:LEU:HD13	1:E:202[B]:VAL:HG23	1.76	0.67
1:E:200[B]:LEU:HD11	1:E:202[B]:VAL:CG2	2.25	0.67
1:D:190:CYS:HB2	2:D:301[B]:ZY7:C3	2.25	0.67
1:A:116[B]:MET:SD	2:B:301:ZY7:O21	2.52	0.66
1:E:200[B]:LEU:HD11	1:E:202[B]:VAL:HG23	1.78	0.66
1:B:7[B]:MET:CE	1:C:21:PRO:HD3	2.25	0.66
2:B:301:ZY7:H5	2:B:301:ZY7:H132	1.76	0.66
1:A:21:PRO:HB3	1:E:7:MET:CE	2.26	0.66
1:B:59[A]:ARG:HH11	1:B:59[A]:ARG:HG2	1.60	0.65

Continued on next page...

Continued from previous page...

Atom-1	Atom-2	Distance(Å)	Clash(Å)
1:A:97[A]:ARG:HH21	1:E:100:GLN:HE22	1.41	0.65
1:A:57[B]:GLN:OE1	2:B:301:ZY7:H2	1.97	0.65
1:C:7[A]:MET:CE	1:D:21:PRO:HD3	2.26	0.65
1:B:105:GLN:NE2	5:B:2113:HOH:O	2.29	0.65
2:A:301[B]:ZY7:H221	1:E:116[B]:MET:CE	2.26	0.65
1:B:59[A]:ARG:HH11	1:B:59[A]:ARG:CG	2.11	0.64
1:C:57[B]:GLN:HG2	2:D:301[B]:ZY7:C23	2.27	0.64
1:D:97[B]:ARG:NH2	5:D:2098:HOH:O	2.29	0.64
1:C:118:ILE:HD11	2:D:301[B]:ZY7:O21	1.96	0.64
1:E:59[B]:ARG:HH21	1:E:59[B]:ARG:HG2	1.63	0.64
1:A:116[B]:MET:SD	2:B:301:ZY7:C22	2.86	0.64
1:E:163:VAL:HG21	1:E:200[B]:LEU:HD21	1.80	0.64
1:C:59[B]:ARG:NH2	5:C:2071:HOH:O	2.31	0.63
1:C:7[B]:MET:HE3	5:C:2008:HOH:O	1.98	0.63
2:A:301[B]:ZY7:H221	1:E:116[B]:MET:SD	2.38	0.63
1:C:7[A]:MET:HE2	1:D:21:PRO:HD3	1.80	0.62
1:D:25:LYS:NZ	5:D:2015:HOH:O	2.32	0.62
1:E:105:GLN:CD	5:E:2127:HOH:O	2.38	0.62
1:E:163:VAL:HG21	1:E:200[B]:LEU:CD2	2.30	0.62
1:C:57[B]:GLN:OE1	5:C:2060:HOH:O	0.63	0.62
1:A:56:GLU:O	1:A:119:PRO:HD2	2.00	0.61
2:A:301[A]:ZY7:H132	2:A:301[A]:ZY7:C5	2.30	0.60
2:A:301[B]:ZY7:H131	2:A:301[B]:ZY7:H5	1.83	0.60
1:A:116[B]:MET:SD	2:B:301:ZY7:H221	2.43	0.59
1:C:59[B]:ARG:HH21	1:C:59[B]:ARG:HG2	1.64	0.59
1:C:-6:LYS:H3	1:C:-6:LYS:HD3	1.67	0.59
1:D:57[A]:GLN:HG3	2:E:301[A]:ZY7:H221	1.83	0.59
1:C:59[B]:ARG:HE	1:C:114:SER:HB2	1.68	0.59
1:E:7:MET:HA	1:E:7:MET:CE	2.33	0.58
1:C:167:SER:OG	2:D:301[A]:ZY7:H232	2.03	0.58
1:A:191:CYS:SG	2:A:301[B]:ZY7:H223	2.44	0.58
1:C:-6:LYS:HD3	1:C:-6:LYS:H1	1.69	0.57
1:C:59[B]:ARG:NH2	1:C:59[B]:ARG:HG3	2.18	0.57
1:E:59[B]:ARG:NH2	5:E:2077:HOH:O	2.36	0.57
1:E:38:GLN:OE1	1:E:55[A]:TYR:CE1	2.57	0.57
1:E:32:THR:HG21	1:E:59[A]:ARG:HH22	1.69	0.57
2:C:301:ZY7:H5	2:C:301:ZY7:C13	2.34	0.57
1:E:59[B]:ARG:HG3	1:E:59[B]:ARG:HH21	1.69	0.57
1:D:143:LYS:HE3	1:D:184:GLN:HE22	1.69	0.57
1:B:57[B]:GLN:HG2	2:C:301:ZY7:C1	2.35	0.57
2:B:301:ZY7:C13	2:B:301:ZY7:H5	2.35	0.56
1:D:57[B]:GLN:HG3	1:D:118:ILE:HD11	1.84	0.56

Continued on next page...

Continued from previous page...

Atom-1	Atom-2	Distance(Å)	Clash(Å)
1:A:143:LYS:NZ	1:A:184:GLN:HE22	2.04	0.56
1:E:50:VAL:HG21	1:E:127:CYS:SG	2.45	0.56
1:A:12:ASP:HA	1:A:16:ARG:HE	1.71	0.56
1:C:7[A]:MET:SD	1:D:18:PRO:HG2	2.46	0.56
1:C:57[B]:GLN:HG2	2:D:301[B]:ZY7:C1	2.36	0.55
1:D:11:SER:OG	1:D:16:ARG:CZ	2.53	0.55
2:D:301[A]:ZY7:H5	2:D:301[A]:ZY7:H132	1.88	0.55
1:A:190:CYS:HB2	2:A:301[B]:ZY7:C1	2.37	0.55
1:C:59[B]:ARG:CG	1:C:59[B]:ARG:NH2	2.58	0.55
1:D:30:THR:HG21	1:D:157[A]:LYS:HE3	1.88	0.55
1:A:100:GLN:HE22	1:B:97[A]:ARG:NH2	2.05	0.54
2:D:301[A]:ZY7:C5	2:D:301[A]:ZY7:H132	2.37	0.54
1:D:147:TRP:CE2	2:D:301[A]:ZY7:H19	2.43	0.54
1:D:55[A]:TYR:CE2	1:E:147:TRP:HH2	2.27	0.54
2:E:301[A]:ZY7:H132	2:E:301[A]:ZY7:H5	1.91	0.53
1:A:11:SER:O	1:A:16:ARG:HG3	2.09	0.53
1:E:56:GLU:O	1:E:119:PRO:HD2	2.09	0.53
1:D:147:TRP:NE1	2:D:301[A]:ZY7:H19	2.23	0.53
1:B:136:GLU:O	1:B:203[B]:LYS:HE3	2.10	0.52
1:B:191:CYS:SG	2:B:301:ZY7:H223	2.50	0.52
1:A:96:THR:O	1:E:122:ARG:HD2	2.08	0.52
2:D:301[A]:ZY7:H5	2:D:301[A]:ZY7:C13	2.40	0.52
1:A:161:ASP:HB3	5:A:2192:HOH:O	2.09	0.52
1:D:190:CYS:CB	2:D:301[B]:ZY7:C4	2.87	0.52
1:D:15:ASN:N	1:D:15:ASN:HD22	2.07	0.52
1:A:21:PRO:HB3	1:E:7:MET:HE3	1.93	0.51
1:B:59[A]:ARG:CG	1:B:59[A]:ARG:NH1	2.73	0.51
1:E:172:SER:O	1:E:207[B]:ARG:HD3	2.11	0.51
1:C:56:GLU:O	1:C:119:PRO:HD2	2.10	0.51
1:D:136:GLU:O	1:D:203:LYS:HE2	2.11	0.51
1:D:167:SER:OG	2:E:301[A]:ZY7:H232	2.11	0.50
2:E:301[A]:ZY7:H132	2:E:301[A]:ZY7:C5	2.41	0.50
1:B:50:VAL:HG21	1:B:127:CYS:SG	2.51	0.50
1:D:57[A]:GLN:HG3	2:E:301[A]:ZY7:C22	2.41	0.50
1:C:7[B]:MET:SD	1:D:21:PRO:HB3	2.52	0.50
1:A:190:CYS:HB2	2:A:301[B]:ZY7:C6	2.41	0.50
1:A:122:ARG:HD2	1:B:96:THR:O	2.10	0.50
1:C:97[B]:ARG:NH1	5:C:2107:HOH:O	2.43	0.49
1:D:190:CYS:CB	2:D:301[B]:ZY7:C5	2.90	0.49
1:C:-6:LYS:O	1:C:-2:ASP:N	2.43	0.48
2:C:301:ZY7:H131	2:C:301:ZY7:C5	2.41	0.48
2:A:301[A]:ZY7:C13	2:A:301[A]:ZY7:H5	2.39	0.48

Continued on next page...

Continued from previous page...

Atom-1	Atom-2	Distance(Å)	Clash(Å)
1:C:-6:LYS:N	1:C:-6:LYS:CD	2.74	0.48
1:B:139:THR:OG1	1:B:203[B]:LYS:NZ	2.41	0.48
2:D:301[B]:ZY7:H131	2:D:301[B]:ZY7:H5	1.95	0.47
1:C:122:ARG:HD2	1:D:96:THR:O	2.13	0.47
1:D:7:MET:CE	1:E:21:PRO:HD3	2.44	0.47
1:E:97[B]:ARG:NH2	5:E:2109:HOH:O	2.26	0.47
1:A:61:LYS:HE3	1:A:112:ASP:O	2.14	0.47
1:B:193:GLU:H	1:B:193:GLU:CD	2.18	0.47
1:B:7[B]:MET:SD	1:C:18:PRO:HB2	2.54	0.47
1:C:7[A]:MET:HE3	1:D:21:PRO:HD3	1.97	0.46
2:E:301[B]:ZY7:H131	2:E:301[B]:ZY7:H5	1.98	0.46
1:E:190:CYS:HB2	2:E:301[B]:ZY7:C3	2.46	0.46
1:E:55[B]:TYR:CD1	1:E:118[B]:ILE:CG2	2.99	0.46
1:D:190:CYS:HB3	2:D:301[B]:ZY7:C5	2.47	0.45
1:D:106:ILE:HB	1:E:148:VAL:HG11	1.97	0.45
1:D:50:VAL:HG21	1:D:127:CYS:SG	2.56	0.45
1:D:122:ARG:HD2	1:E:96:THR:O	2.15	0.45
1:D:56:GLU:O	1:D:119:PRO:HD2	2.17	0.45
1:D:99[A]:VAL:HG22	1:D:123:LEU:HD13	1.99	0.45
1:E:59[A]:ARG:HD3	5:E:2076:HOH:O	2.17	0.45
1:E:139:THR:OG1	1:E:203[B]:LYS:HG2	2.16	0.45
1:E:59[B]:ARG:HG3	1:E:59[B]:ARG:NH2	2.31	0.44
1:C:43:ALA:HA	1:C:50:VAL:HG22	1.99	0.44
1:D:59:ARG:NH2	1:D:61:LYS:HE3	2.32	0.44
1:B:106:ILE:HB	1:C:148:VAL:HG11	1.99	0.44
1:A:57[B]:GLN:HG3	1:A:118:ILE:CD1	2.46	0.44
1:A:57[B]:GLN:HG2	5:A:2039:HOH:O	2.16	0.44
1:A:147:TRP:HH2	1:E:55[A]:TYR:CZ	2.36	0.44
1:B:122:ARG:HD2	1:C:96:THR:O	2.17	0.44
1:C:143[A]:LYS:NZ	1:C:184:GLN:HE22	2.15	0.44
1:D:11:SER:O	1:D:16:ARG:HD2	2.18	0.43
1:D:57[B]:GLN:CG	1:D:118:ILE:HD12	2.42	0.43
1:E:147:TRP:O	2:E:301[A]:ZY7:N10	2.52	0.43
1:A:147:TRP:CE2	2:A:301[A]:ZY7:H19	2.54	0.43
1:A:50:VAL:HG21	1:A:127:CYS:SG	2.58	0.43
1:C:163:VAL:HG21	1:C:200:LEU:CD1	2.48	0.43
2:A:301[B]:ZY7:H5	1:E:55[B]:TYR:CE1	2.54	0.43
1:B:163:VAL:HG21	1:B:200:LEU:CD1	2.49	0.43
1:D:190:CYS:HB2	2:D:301[B]:ZY7:C5	2.49	0.43
1:A:14:PHE:C	1:A:16:ARG:H	2.22	0.43
2:D:301[A]:ZY7:C5	2:D:301[A]:ZY7:C13	2.97	0.42
1:E:32:THR:CG2	1:E:59[A]:ARG:HH22	2.31	0.42

Continued on next page...

Continued from previous page...

Atom-1	Atom-2	Distance(Å)	Clash(Å)
1:E:147:TRP:NE1	2:E:301[A]:ZY7:H19	2.35	0.42
1:D:55[A]:TYR:CZ	1:E:147:TRP:HH2	2.37	0.42
1:C:136:GLU:HG2	5:C:2140:HOH:O	2.20	0.41
1:E:178:SER:OG	1:E:203[B]:LYS:HD2	2.20	0.41
1:A:147:TRP:NE1	2:A:301[A]:ZY7:H19	2.35	0.41
2:A:301[B]:ZY7:C13	2:A:301[B]:ZY7:H5	2.48	0.41
1:C:59[B]:ARG:HD2	1:C:115:VAL:O	2.21	0.41
1:E:50:VAL:CG2	1:E:127:CYS:SG	3.09	0.41
1:A:143:LYS:HZ3	1:A:184:GLN:HE22	1.68	0.41
1:C:61:LYS:NZ	1:C:112:ASP:O	2.52	0.41
1:A:99[A]:VAL:HG21	1:A:121:GLN:NE2	2.36	0.41
1:E:17:SER:HA	1:E:18:PRO:HD3	1.89	0.41
1:D:57[B]:GLN:NE2	5:D:2063:HOH:O	2.46	0.41
1:A:116[B]:MET:CG	1:A:118:ILE:HD11	2.50	0.41
1:E:59[B]:ARG:CG	1:E:59[B]:ARG:NH2	2.65	0.40
1:C:55:TYR:CE2	1:D:147:TRP:HH2	2.39	0.40
1:D:79:ARG:NH2	5:D:2078:HOH:O	2.29	0.40
1:E:163:VAL:CG2	1:E:200[B]:LEU:CD2	2.98	0.40
1:B:178:SER:OG	1:B:203[A]:LYS:HD3	2.22	0.40
1:A:3:GLN:HG2	5:B:2009:HOH:O	2.22	0.40

There are no symmetry-related clashes.

5.3 Torsion angles

5.3.1 Protein backbone ⓘ

In the following table, the Percentiles column shows the percent Ramachandran outliers of the chain as a percentile score with respect to all X-ray entries followed by that with respect to entries of similar resolution. The Analysed column shows the number of residues for which the backbone conformation was analysed, and the total number of residues.

Mol	Chain	Analysed	Favoured	Allowed	Outliers	Percentiles	
1	A	217/228 (95%)	211 (97%)	6 (3%)	0	100	100
1	B	218/228 (96%)	216 (99%)	2 (1%)	0	100	100
1	C	221/228 (97%)	218 (99%)	3 (1%)	0	100	100
1	D	217/228 (95%)	214 (99%)	3 (1%)	0	100	100
1	E	228/228 (100%)	225 (99%)	3 (1%)	0	100	100
All	All	1101/1140 (97%)	1084 (98%)	17 (2%)	0	100	100

There are no Ramachandran outliers to report.

5.3.2 Protein sidechains ⓘ

In the following table, the Percentiles column shows the percent sidechain outliers of the chain as a percentile score with respect to all X-ray entries followed by that with respect to entries of similar resolution. The Analysed column shows the number of residues for which the sidechain conformation was analysed, and the total number of residues.

Mol	Chain	Analysed	Rotameric	Outliers	Percentiles	
1	A	200/206 (97%)	195 (98%)	5 (2%)	60	42
1	B	201/206 (98%)	193 (96%)	8 (4%)	42	22
1	C	205/206 (100%)	201 (98%)	4 (2%)	68	53
1	D	200/206 (97%)	196 (98%)	4 (2%)	68	53
1	E	211/206 (102%)	203 (96%)	8 (4%)	44	24
All	All	1017/1030 (99%)	988 (97%)	29 (3%)	57	37

All (29) residues with a non-rotameric sidechain are listed below:

Mol	Chain	Res	Type
1	A	19	MET
1	A	57[A]	GLN
1	A	57[B]	GLN
1	A	80	THR
1	A	193	GLU
1	B	17	SER
1	B	59[A]	ARG
1	B	59[B]	ARG
1	B	80	THR
1	B	157	LYS
1	B	162	GLN
1	B	193	GLU
1	B	208	ARG
1	C	-6	LYS
1	C	17	SER
1	C	19	MET
1	C	136	GLU
1	D	0	LEU
1	D	15	ASN
1	D	17	SER
1	D	205	ARG
1	E	-6	LYS

Continued on next page...

Continued from previous page...

Mol	Chain	Res	Type
1	E	-3	ASP
1	E	15	ASN
1	E	16	ARG
1	E	19	MET
1	E	59[A]	ARG
1	E	59[B]	ARG
1	E	80	THR

Some sidechains can be flipped to improve hydrogen bonding and reduce clashes. All (16) such sidechains are listed below:

Mol	Chain	Res	Type
1	A	15	ASN
1	A	100	GLN
1	A	121	GLN
1	A	184	GLN
1	A	187	HIS
1	B	15	ASN
1	B	187	HIS
1	C	15	ASN
1	C	70	ASN
1	C	184	GLN
1	D	15	ASN
1	D	184	GLN
1	D	199	ASN
1	E	100	GLN
1	E	162	GLN
1	E	199	ASN

5.3.3 RNA ⓘ

There are no RNA chains in this entry.

5.4 Non-standard residues in protein, DNA, RNA chains ⓘ

There are no non-standard protein/DNA/RNA residues in this entry.

5.5 Carbohydrates ⓘ

4 carbohydrates are modelled in this entry.

In the following table, the Counts columns list the number of bonds (or angles) for which Mogul statistics could be retrieved, the number of bonds (or angles) that are observed in the model and the number of bonds (or angles) that are defined in the chemical component dictionary. The Link column lists molecule types, if any, to which the group is linked. The Z score for a bond length (or angle) is the number of standard deviations the observed value is removed from the expected value. A bond length (or angle) with $|Z| > 2$ is considered an outlier worth inspection. RMSZ is the root-mean-square of all Z scores of the bond lengths (or angles).

Mol	Type	Chain	Res	Link	Bond lengths			Bond angles		
					Counts	RMSZ	$\# Z > 2$	Counts	RMSZ	$\# Z > 2$
3	NAG	A	401	1,3	12,14,15	0.43	0	15,19,21	1.47	3 (20%)
3	NAG	A	402	3	12,14,15	0.49	0	15,19,21	1.59	2 (13%)
3	BMA	A	403	3	10,11,12	0.51	0	11,15,17	0.68	0
3	MAN	A	404	3	10,11,12	0.55	0	11,15,17	0.68	0

In the following table, the Chirals column lists the number of chiral outliers, the number of chiral centers analysed, the number of these observed in the model and the number defined in the chemical component dictionary. Similar counts are reported in the Torsion and Rings columns. '-' means no outliers of that kind were identified.

Mol	Type	Chain	Res	Link	Chirals	Torsions	Rings
3	NAG	A	401	1,3	-	0/6/23/26	0/1/1/1
3	NAG	A	402	3	-	0/6/23/26	0/1/1/1
3	BMA	A	403	3	-	0/2/19/22	0/1/1/1
3	MAN	A	404	3	-	0/2/19/22	0/1/1/1

There are no bond length outliers.

All (5) bond angle outliers are listed below:

Mol	Chain	Res	Type	Atoms	Z	Observed(°)	Ideal(°)
3	A	402	NAG	C3-C2-N2	-4.41	105.05	111.76
3	A	401	NAG	C3-C4-C5	3.00	115.56	110.20
3	A	401	NAG	O5-C5-C4	2.89	114.32	110.65
3	A	402	NAG	C2-N2-C7	-2.37	119.11	123.09
3	A	401	NAG	C3-C2-N2	-2.24	108.36	111.76

There are no chirality outliers.

There are no torsion outliers.

There are no ring outliers.

5.6 Ligand geometry ⓘ

9 ligands are modelled in this entry.

In the following table, the Counts columns list the number of bonds (or angles) for which Mogul statistics could be retrieved, the number of bonds (or angles) that are observed in the model and the number of bonds (or angles) that are defined in the chemical component dictionary. The Link column lists molecule types, if any, to which the group is linked. The Z score for a bond length (or angle) is the number of standard deviations the observed value is removed from the expected value. A bond length (or angle) with $|Z| > 2$ is considered an outlier worth inspection. RMSZ is the root-mean-square of all Z scores of the bond lengths (or angles).

Mol	Type	Chain	Res	Link	Bond lengths			Bond angles		
					Counts	RMSZ	# $ Z > 2$	Counts	RMSZ	# $ Z > 2$
2	ZY7	A	301[A]	-	25,25,25	1.22	3 (12%)	33,33,33	3.31	7 (21%)
2	ZY7	A	301[B]	-	25,25,25	1.32	3 (12%)	33,33,33	2.69	10 (30%)
2	ZY7	B	301	-	25,25,25	1.19	2 (8%)	33,33,33	2.48	12 (36%)
4	NAG	B	401	1	12,14,15	0.45	0	15,19,21	1.32	1 (6%)
2	ZY7	C	301	-	25,25,25	2.11	2 (8%)	33,33,33	3.46	11 (33%)
2	ZY7	D	301[A]	-	25,25,25	1.11	2 (8%)	33,33,33	2.91	8 (24%)
2	ZY7	D	301[B]	-	25,25,25	1.34	2 (8%)	33,33,33	2.63	10 (30%)
2	ZY7	E	301[A]	-	25,25,25	1.20	3 (12%)	33,33,33	3.28	10 (30%)
2	ZY7	E	301[B]	-	25,25,25	1.19	2 (8%)	33,33,33	2.77	9 (27%)

In the following table, the Chirals column lists the number of chiral outliers, the number of chiral centers analysed, the number of these observed in the model and the number defined in the chemical component dictionary. Similar counts are reported in the Torsion and Rings columns. '-' means no outliers of that kind were identified.

Mol	Type	Chain	Res	Link	Chirals	Torsions	Rings
2	ZY7	A	301[A]	-	-	0/12/23/23	0/3/3/3
2	ZY7	A	301[B]	-	-	0/12/23/23	0/3/3/3
2	ZY7	B	301	-	-	0/12/23/23	0/3/3/3
4	NAG	B	401	1	-	0/6/23/26	0/1/1/1
2	ZY7	C	301	-	-	0/12/23/23	0/3/3/3
2	ZY7	D	301[A]	-	-	0/12/23/23	0/3/3/3
2	ZY7	D	301[B]	-	-	0/12/23/23	0/3/3/3
2	ZY7	E	301[A]	-	-	0/12/23/23	0/3/3/3
2	ZY7	E	301[B]	-	-	0/12/23/23	0/3/3/3

All (19) bond length outliers are listed below:

Mol	Chain	Res	Type	Atoms	Z	Observed(Å)	Ideal(Å)
2	C	301	ZY7	C9-N10	-9.60	1.22	1.29
2	D	301[B]	ZY7	C4-C3	4.43	1.50	1.41
2	A	301[B]	ZY7	C4-C3	3.96	1.49	1.41
2	A	301[B]	ZY7	C9-N10	-3.88	1.26	1.29
2	D	301[B]	ZY7	C9-N10	-3.78	1.26	1.29
2	B	301	ZY7	C4-C3	3.63	1.49	1.41
2	E	301[A]	ZY7	C4-C3	3.62	1.49	1.41
2	E	301[B]	ZY7	C4-C3	3.56	1.48	1.41
2	A	301[A]	ZY7	C4-C3	3.53	1.48	1.41
2	D	301[A]	ZY7	C4-C3	3.50	1.48	1.41
2	C	301	ZY7	C4-C3	3.31	1.48	1.41
2	A	301[A]	ZY7	C9-N10	-3.30	1.26	1.29
2	E	301[B]	ZY7	C9-N10	-3.18	1.26	1.29
2	B	301	ZY7	C9-N10	-2.94	1.27	1.29
2	D	301[A]	ZY7	C9-N10	-2.80	1.27	1.29
2	E	301[A]	ZY7	C4-C7	2.47	1.50	1.46
2	A	301[A]	ZY7	C4-C7	2.25	1.50	1.46
2	E	301[A]	ZY7	C9-N10	-2.17	1.27	1.29
2	A	301[B]	ZY7	C4-C7	2.05	1.50	1.46

All (78) bond angle outliers are listed below:

Mol	Chain	Res	Type	Atoms	Z	Observed(°)	Ideal(°)
2	C	301	ZY7	C11-N10-C9	16.57	130.68	116.06
2	A	301[A]	ZY7	C11-N10-C9	15.89	130.08	116.06
2	E	301[A]	ZY7	C11-N10-C9	15.17	129.45	116.06
2	D	301[A]	ZY7	C11-N10-C9	13.18	127.69	116.06
2	E	301[B]	ZY7	C11-N10-C9	12.46	127.06	116.06
2	A	301[B]	ZY7	C11-N10-C9	10.80	125.59	116.06
2	D	301[B]	ZY7	C11-N10-C9	10.02	124.90	116.06
2	B	301	ZY7	C11-N10-C9	7.63	122.79	116.06
2	E	301[A]	ZY7	C8-C9-N10	-7.32	117.12	124.32
2	A	301[A]	ZY7	C8-C9-N10	-6.98	117.46	124.32
2	C	301	ZY7	C8-C9-N10	-5.71	118.71	124.32
2	D	301[A]	ZY7	C8-C9-N10	-5.56	118.86	124.32
2	B	301	ZY7	C8-C9-N10	-5.54	118.88	124.32
2	A	301[B]	ZY7	C8-C9-N10	-5.49	118.92	124.32
2	B	301	ZY7	O21-C3-C4	5.40	121.51	115.86
2	D	301[B]	ZY7	C22-O21-C3	4.88	124.80	117.59
2	A	301[B]	ZY7	O21-C3-C4	4.73	120.81	115.86
2	E	301[B]	ZY7	C8-C9-N10	-4.57	119.83	124.32
4	B	401	NAG	C3-C2-N2	-4.52	104.89	111.76
2	C	301	ZY7	O21-C3-C4	4.49	120.56	115.86

Continued on next page...

Continued from previous page...

Mol	Chain	Res	Type	Atoms	Z	Observed(°)	Ideal(°)
2	D	301[B]	ZY7	C8-C9-N10	-4.34	120.05	124.32
2	D	301[A]	ZY7	O21-C3-C4	4.29	120.35	115.86
2	B	301	ZY7	C22-O21-C3	3.91	123.38	117.59
2	D	301[B]	ZY7	C14-C9-C8	-3.70	117.84	122.38
2	E	301[B]	ZY7	C14-C9-C8	-3.65	117.90	122.38
2	A	301[A]	ZY7	C12-C13-C8	-3.52	105.33	112.28
2	E	301[B]	ZY7	C14-C9-N10	3.47	122.15	117.78
2	E	301[A]	ZY7	C14-C9-C8	3.33	126.46	122.38
2	A	301[A]	ZY7	C22-O21-C3	3.33	122.51	117.59
2	D	301[B]	ZY7	C14-C9-N10	3.17	121.78	117.78
2	E	301[B]	ZY7	O21-C3-C4	3.16	119.16	115.86
2	D	301[A]	ZY7	C12-C11-N10	-2.99	103.67	113.80
2	D	301[B]	ZY7	O21-C3-C4	2.94	118.94	115.86
2	B	301	ZY7	C14-C9-C8	-2.94	118.77	122.38
2	A	301[B]	ZY7	C14-C9-N10	2.94	121.48	117.78
2	A	301[B]	ZY7	C22-O21-C3	2.89	121.86	117.59
2	E	301[A]	ZY7	C22-O21-C3	2.88	121.85	117.59
2	C	301	ZY7	C13-C8-C7	2.88	128.08	125.18
2	B	301	ZY7	C14-C9-N10	2.86	121.39	117.78
2	D	301[B]	ZY7	C17-N18-C19	2.80	121.88	116.85
2	C	301	ZY7	C14-C19-N18	-2.76	119.48	123.51
2	B	301	ZY7	C15-C14-C19	2.70	120.94	117.64
2	B	301	ZY7	O21-C3-C2	-2.68	119.56	124.23
2	A	301[B]	ZY7	C17-N18-C19	2.63	121.57	116.85
2	D	301[B]	ZY7	C12-C11-N10	-2.62	104.92	113.80
2	D	301[B]	ZY7	C14-C19-N18	-2.62	119.69	123.51
2	A	301[A]	ZY7	C14-C9-C8	2.62	125.59	122.38
2	C	301	ZY7	C17-N18-C19	2.62	121.54	116.85
2	B	301	ZY7	C12-C11-N10	-2.58	105.04	113.80
2	A	301[B]	ZY7	O21-C3-C2	-2.56	119.78	124.23
2	E	301[B]	ZY7	C17-N18-C19	2.56	121.44	116.85
2	A	301[B]	ZY7	C12-C11-N10	-2.55	105.17	113.80
2	E	301[A]	ZY7	C12-C11-N10	-2.51	105.30	113.80
2	C	301	ZY7	O21-C3-C2	-2.47	119.92	124.23
2	C	301	ZY7	C12-C11-N10	-2.46	105.46	113.80
2	B	301	ZY7	C14-C19-N18	-2.44	119.94	123.51
2	A	301[B]	ZY7	C14-C9-C8	-2.42	119.41	122.38
2	B	301	ZY7	C19-C14-C9	-2.42	116.42	121.05
2	C	301	ZY7	C12-C13-C8	-2.39	107.56	112.28
2	A	301[A]	ZY7	C12-C11-N10	-2.36	105.79	113.80
2	E	301[A]	ZY7	C17-N18-C19	2.36	121.09	116.85
2	C	301	ZY7	C7-C8-C9	-2.35	114.78	120.26

Continued on next page...

Continued from previous page...

Mol	Chain	Res	Type	Atoms	Z	Observed(°)	Ideal(°)
2	E	301[A]	ZY7	C12-C13-C8	-2.34	107.66	112.28
2	B	301	ZY7	C17-N18-C19	2.31	121.00	116.85
2	E	301[B]	ZY7	C14-C19-N18	-2.31	120.14	123.51
2	E	301[A]	ZY7	C23-O20-C1	2.30	123.14	117.54
2	A	301[A]	ZY7	O21-C3-C4	2.26	118.23	115.86
2	D	301[A]	ZY7	C17-N18-C19	2.21	120.81	116.85
2	D	301[B]	ZY7	C12-C13-C8	-2.20	107.94	112.28
2	A	301[B]	ZY7	C14-C19-N18	-2.17	120.34	123.51
2	E	301[A]	ZY7	O21-C3-C4	2.16	118.13	115.86
2	D	301[A]	ZY7	C23-O20-C1	2.15	122.79	117.54
2	E	301[A]	ZY7	C3-C4-C7	-2.15	115.98	119.06
2	D	301[A]	ZY7	C12-C13-C8	-2.14	108.05	112.28
2	C	301	ZY7	C15-C14-C19	2.14	120.26	117.64
2	D	301[A]	ZY7	C4-C7-C8	-2.14	124.81	128.44
2	E	301[B]	ZY7	C3-C4-C7	-2.07	116.09	119.06
2	E	301[B]	ZY7	C5-C4-C7	2.04	126.44	122.44

There are no chirality outliers.

There are no torsion outliers.

There are no ring outliers.

5.7 Other polymers ⓘ

There are no such residues in this entry.

5.8 Polymer linkage issues

There are no chain breaks in this entry.

6 Fit of model and data ⓘ

6.1 Protein, DNA and RNA chains ⓘ

In the following table, the column labelled ‘#RSRZ > 2’ contains the number (and percentage) of RSRZ outliers, followed by percent RSRZ outliers for the chain as percentile scores relative to all X-ray entries and entries of similar resolution. The OWAB column contains the minimum, median, 95th percentile and maximum values of the occupancy-weighted average B-factor per residue. The column labelled ‘Q < 0.9’ lists the number of (and percentage) of residues with an average occupancy less than 0.9.

Mol	Chain	Analysed	<RSRZ>	#RSRZ > 2		OWAB(Å ²)	Q < 0.9
1	A	209/228 (91%)	0.01	9 (4%)	34 27	20, 31, 57, 71	2 (0%)
1	B	212/228 (92%)	0.25	11 (5%)	26 20	20, 33, 58, 83	0
1	C	214/228 (93%)	0.07	6 (2%)	50 43	21, 32, 59, 79	0
1	D	211/228 (92%)	0.17	12 (5%)	23 17	19, 29, 62, 82	0
1	E	217/228 (95%)	0.06	7 (3%)	45 37	19, 29, 51, 75	0
All	All	1063/1140 (93%)	0.11	45 (4%)	35 28	19, 31, 59, 83	2 (0%)

All (45) RSRZ outliers are listed below:

Mol	Chain	Res	Type	RSRZ
1	D	16	ARG	7.2
1	D	18	PRO	6.5
1	E	15	ASN	6.0
1	C	18	PRO	5.8
1	D	15	ASN	5.7
1	A	18	PRO	5.6
1	B	18	PRO	5.5
1	E	18	PRO	5.3
1	A	16	ARG	5.0
1	B	19	MET	4.8
1	C	19	MET	4.7
1	A	0	LEU	4.6
1	B	15	ASN	4.5
1	A	189	SER	4.4
1	A	19	MET	4.3
1	E	19	MET	4.3
1	D	17	SER	4.1
1	B	17	SER	4.0
1	A	15	ASN	3.9
1	B	208	ARG	3.8

Continued on next page...

Continued from previous page...

Mol	Chain	Res	Type	RSRZ
1	D	0	LEU	3.7
1	A	1	HIS	3.7
1	E	208	ARG	3.5
1	E	17	SER	3.3
1	B	16	ARG	3.2
1	E	16	ARG	3.1
1	B	-3	ASP	3.1
1	D	-2	ASP	3.1
1	D	-1	LYS	2.9
1	C	16	ARG	2.9
1	C	0	LEU	2.8
1	B	1	HIS	2.7
1	D	19	MET	2.7
1	D	14	PHE	2.7
1	D	74	ASN	2.5
1	E	74	ASN	2.4
1	D	11	SER	2.4
1	C	15	ASN	2.4
1	A	208	ARG	2.3
1	B	14	PHE	2.3
1	C	17	SER	2.3
1	B	-2	ASP	2.3
1	A	136	GLU	2.2
1	D	208	ARG	2.1
1	B	0	LEU	2.1

6.2 Non-standard residues in protein, DNA, RNA chains ⓘ

There are no non-standard protein/DNA/RNA residues in this entry.

6.3 Carbohydrates ⓘ

In the following table, the Atoms column lists the number of modelled atoms in the group and the number defined in the chemical component dictionary. LLDF column lists the quality of electron density of the group with respect to its neighbouring residues in protein, DNA or RNA chains. The B-factors column lists the minimum, median, 95th percentile and maximum values of B factors of atoms in the group. The column labelled 'Q< 0.9' lists the number of atoms with occupancy less than 0.9.

Mol	Type	Chain	Res	Atoms	RSR	LLDF	B-factors(Å ²)	Q<0.9
3	NAG	A	401	14/15	0.26	3.76	58,62,66,66	0

Continued on next page...

Continued from previous page...

Mol	Type	Chain	Res	Atoms	RSR	LLDF	B-factors(\AA^2)	Q<0.9
3	MAN	A	404	11/12	0.32	2.47	55,56,57,58	0
3	BMA	A	403	11/12	0.31	2.33	52,56,59,61	0
3	NAG	A	402	14/15	0.31	-	59,61,63,64	0

6.4 Ligands

In the following table, the Atoms column lists the number of modelled atoms in the group and the number defined in the chemical component dictionary. LLDF column lists the quality of electron density of the group with respect to its neighbouring residues in protein, DNA or RNA chains. The B-factors column lists the minimum, median, 95th percentile and maximum values of B factors of atoms in the group. The column labelled 'Q< 0.9' lists the number of atoms with occupancy less than 0.9.

Mol	Type	Chain	Res	Atoms	RSR	LLDF	B-factors(\AA^2)	Q<0.9
2	ZY7	D	301[A]	23/23	0.20	2.64	29,34,36,37	23
2	ZY7	A	301[A]	23/23	0.19	2.60	30,35,37,37	23
2	ZY7	D	301[B]	23/23	0.20	2.58	25,31,37,38	23
2	ZY7	A	301[B]	23/23	0.19	2.41	32,37,44,45	23
2	ZY7	B	301	23/23	0.18	2.34	33,42,49,52	0
2	ZY7	E	301[B]	23/23	0.16	1.58	26,30,34,37	23
2	ZY7	E	301[A]	23/23	0.16	1.54	27,30,31,32	23
4	NAG	B	401	14/15	0.25	1.50	56,60,61,62	0
2	ZY7	C	301	23/23	0.12	0.03	21,26,44,48	0

6.5 Other polymers

There are no such residues in this entry.