



Full wwPDB X-ray Structure Validation Report

Mar 1, 2014 – 12:16 AM GMT

PDB ID : 1WU1
Title : Factor Xa in complex with the inhibitor 4-[(5-chloroindol-2-yl)sulfonyl]-2-(2-methylpropyl)-1-[[5-(pyridin-4-yl)pyrimidin-2-yl]carbonyl]piperazine
Authors : Suzuki, M.
Deposited on : 2004-11-29
Resolution : 2.30 Å(reported)

This is a full wwPDB validation report for a publicly released PDB entry.
We welcome your comments at validation@mail.wwpdb.org
A user guide is available at <http://wwpdb.org/ValidationPDFNotes.html>

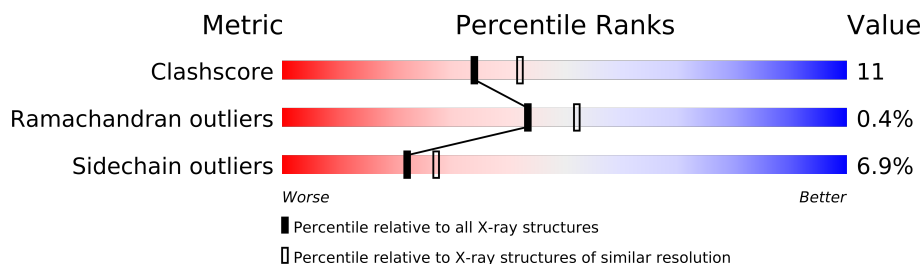
The following versions of software and data (see [references](#)) were used in the production of this report:

MolProbity	:	4.02b-467
Mogul	:	1.15 2013
Xtriage (Phenix)	:	NOT EXECUTED
EDS	:	NOT EXECUTED
Percentile statistics	:	21963
Ideal geometry (proteins)	:	Engh & Huber (2001)
Ideal geometry (DNA, RNA)	:	Parkinson et. al. (1996)
Validation Pipeline (wwPDB-VP)	:	stable22683

1 Overall quality at a glance

The reported resolution of this entry is 2.30 Å.

Percentile scores (ranging between 0-100) for global validation metrics of the entry are shown in the following graphic. The table shows the number of entries on which the scores are based.



Metric	Whole archive (#Entries)	Similar resolution (#Entries, resolution range(Å))
Clashscore	79885	3679 (2.30-2.30)
Ramachandran outliers	78287	3642 (2.30-2.30)
Sidechain outliers	78261	3641 (2.30-2.30)

The table below summarises the geometric issues observed across the polymeric chains and their fit to the electron density. The red, orange, yellow and green segments on the lower bar indicate the fraction of residues that contain outliers for ≥ 3 , 2, 1 and 0 types of geometric quality criteria. The upper red bar (where present) indicates the fraction of residues that have poor fit to the electron density.

Note EDS was not executed.

Mol	Chain	Length	Quality of chain
1	A	233	
2	B	95	

2 Entry composition

There are 5 unique types of molecules in this entry. The entry contains 2266 atoms, of which 0 are hydrogen and 0 are deuterium.

In the tables below, the ZeroOcc column contains the number of atoms modelled with zero occupancy, the AltConf column contains the number of residues with at least one atom in alternate conformation and the Trace column contains the number of residues modelled with at most 2 atoms.

- Molecule 1 is a protein called Coagulation factor X, heavy chain.

Mol	Chain	Residues	Atoms					ZeroOcc	AltConf	Trace
1	A	233	Total	C	N	O	S	0	0	0
			1777	1131	300	332	14			

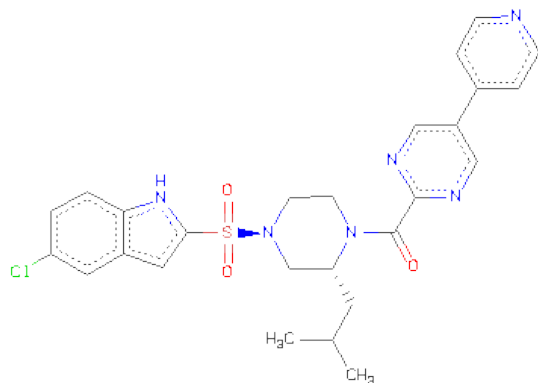
- Molecule 2 is a protein called Coagulation factor X, light chain.

Mol	Chain	Residues	Atoms					ZeroOcc	AltConf	Trace
2	B	54	Total	C	N	O	S	0	0	0
			378	228	63	80	7			

- Molecule 3 is CALCIUM ION (three-letter code: CA) (formula: Ca).

Mol	Chain	Residues	Atoms		ZeroOcc	AltConf
3	A	2	Total	Ca	0	0
			2	2		

- Molecule 4 is 5-CHLORO-2-({3-ISOBUTYL-4-[(5-PYRIDIN-4-YLPYRIMIDIN-2-YL)CARBONYL]PIPERAZIN-1-YL}SULFONYL)-1H-INDOLE (three-letter code: D91) (formula: C₂₆H₂₇ClN₆O₃S).



Mol	Chain	Residues	Atoms						ZeroOcc	AltConf
4	A	1	Total	C	Cl	N	O	S	0	0
			33	22	1	6	3	1		

- Molecule 5 is water.

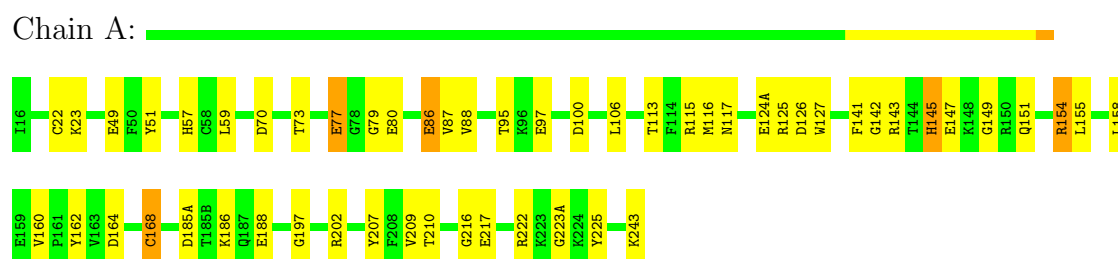
Mol	Chain	Residues	Atoms		ZeroOcc	AltConf
5	A	59	Total	O	0	0
			59	59		
5	B	17	Total	O	0	0
			17	17		

3 Residue-property plots

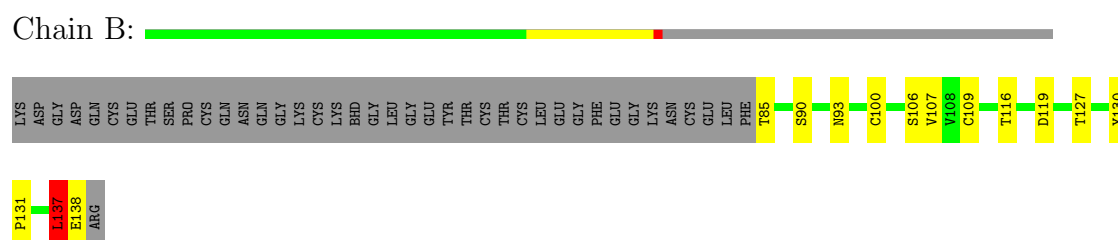
These plots are drawn for all protein, RNA and DNA chains in the entry. The first graphic for a chain summarises the proportions of errors displayed in the second graphic. The second graphic shows the sequence view annotated by issues in geometry and electron density. Residues are color-coded according to the number of geometric quality criteria for which they contain at least one outlier: green = 0, yellow = 1, orange = 2 and red = 3 or more. A red dot above a residue indicates a poor fit to the electron density ($RSRZ > 2$). Stretches of 2 or more consecutive residues without any outlier are shown as a green connector. Residues present in the sample, but not in the model, are shown in grey.

Note EDS was not executed.

- Molecule 1: Coagulation factor X, heavy chain



- Molecule 2: Coagulation factor X, light chain



4 Data and refinement statistics

Xtriage (Phenix) and EDS were not executed - this section will therefore be incomplete.

Property	Value	Source
Space group	P 21 21 21	Depositor
Cell constants a, b, c, α , β , γ	56.57Å 72.49Å 79.02Å 90.00° 90.00° 90.00°	Depositor
Resolution (Å)	25.00 – 2.30	Depositor
% Data completeness (in resolution range)	100.0 (25.00-2.30)	Depositor
R_{merge}	0.06	Depositor
R_{sym}	0.34	Depositor
Refinement program	REFMAC 5.2.0005	Depositor
R, R_{free}	0.189 , 0.235	Depositor
Estimated twinning fraction	No twinning to report.	Xtriage
Total number of atoms	2266	wwPDB-VP
Average B, all atoms (Å ²)	47.0	wwPDB-VP

5 Model quality i

5.1 Standard geometry i

Bond lengths and bond angles in the following residue types are not validated in this section: CA, D91

The Z score for a bond length (or angle) is the number of standard deviations the observed value is removed from the expected value. A bond length (or angle) with $|Z| > 5$ is considered an outlier worth inspection. RMSZ is the root-mean-square of all Z scores of the bond lengths (or angles).

Mol	Chain	Bond lengths		Bond angles	
		RMSZ	$\# Z > 5$	RMSZ	$\# Z > 5$
1	A	1.03	4/1815 (0.2%)	1.00	3/2453 (0.1%)
2	B	1.13	1/384 (0.3%)	1.04	0/523
All	All	1.05	5/2199 (0.2%)	1.01	3/2976 (0.1%)

All (5) bond length outliers are listed below:

Mol	Chain	Res	Type	Atoms	Z	Observed(Å)	Ideal(Å)
2	B	109	CYS	CB-SG	-7.95	1.68	1.82
1	A	162	TYR	CD2-CE2	5.86	1.48	1.39
1	A	168	CYS	CB-SG	-5.62	1.72	1.81
1	A	160	VAL	CB-CG1	-5.18	1.42	1.52
1	A	22	CYS	CB-SG	-5.02	1.73	1.81

All (3) bond angle outliers are listed below:

Mol	Chain	Res	Type	Atoms	Z	Observed(°)	Ideal(°)
1	A	154	ARG	NE-CZ-NH2	7.09	123.85	120.30
1	A	100	ASP	CB-CG-OD1	5.99	123.69	118.30
1	A	154	ARG	NE-CZ-NH1	-5.30	117.65	120.30

There are no chirality outliers.

There are no planarity outliers.

5.2 Close contacts i

In the following table, the Non-H and H(model) columns list the number of non-hydrogen atoms and hydrogen atoms in the chain respectively. The H(added) column lists the number of hydrogens added by MolProbity. The Clashes column lists the number of clashes within the asymmetric unit, and the number in parentheses is this value normalized per 1000 atoms of the molecule in the

chain. The Symm-Clashes column gives symmetry related clashes, in the same way as for the Clashes column.

Mol	Chain	Non-H	H(model)	H(added)	Clashes	Symm-Clashes
1	A	1777	0	1678	38	0
2	B	378	0	326	10	0
3	A	2	0	0	0	0
4	A	33	0	17	2	0
5	A	59	0	0	5	0
5	B	17	0	0	1	0
All	All	2266	0	2021	46	0

Clashscore is defined as the number of clashes calculated for the entry per 1000 atoms (including hydrogens) of the entry. The overall clashscore for this entry is 11.

All (46) close contacts within the same asymmetric unit are listed below.

Atom-1	Atom-2	Distance(Å)	Clash(Å)
1:A:86:GLU:HG2	1:A:87:VAL:HG23	1.38	1.02
1:A:49:GLU:HG2	5:A:344:HOH:O	1.68	0.91
1:A:124(A):GLU:HB3	5:A:324:HOH:O	1.73	0.86
1:A:145:HIS:CD2	1:A:149:GLY:HA3	2.14	0.81
2:B:137:LEU:HD12	2:B:138:GLU:N	1.99	0.77
1:A:77:GLU:HG2	1:A:80:GLU:OE1	1.83	0.77
1:A:217:GLU:O	1:A:222:ARG:HD2	1.87	0.74
1:A:185(A):ASP:OD1	1:A:223(A):GLY:HA2	1.89	0.73
2:B:116:THR:HG23	2:B:127:THR:CG2	2.20	0.70
1:A:158:LEU:HD11	1:A:188:GLU:HB3	1.77	0.66
1:A:145:HIS:CD2	1:A:149:GLY:CA	2.81	0.63
1:A:86:GLU:CG	1:A:87:VAL:HG23	2.21	0.61
1:A:127:TRP:HE1	2:B:93:ASN:HD21	1.49	0.60
2:B:116:THR:HG23	2:B:127:THR:HG23	1.84	0.59
1:A:86:GLU:HG2	1:A:87:VAL:CG2	2.23	0.58
1:A:59:LEU:HD13	1:A:88:VAL:HG11	1.86	0.58
1:A:79:GLY:O	1:A:115:ARG:NH2	2.37	0.57
1:A:127:TRP:HE1	2:B:93:ASN:ND2	2.03	0.56
1:A:147:GLU:OE2	1:A:222:ARG:NH1	2.39	0.55
1:A:197:GLY:HA3	5:A:303:HOH:O	2.07	0.55
2:B:100:CYS:SG	2:B:107:VAL:HG13	2.47	0.54
1:A:116:MET:O	1:A:117:ASN:HB2	2.07	0.53
1:A:97:GLU:O	4:A:700:D91:H32	2.08	0.53
1:A:113:THR:O	1:A:113:THR:HG22	2.08	0.53
1:A:145:HIS:HD2	1:A:149:GLY:CA	2.20	0.52
1:A:145:HIS:HD2	1:A:149:GLY:N	2.07	0.52
1:A:142:GLY:HA2	1:A:151:GLN:HE21	1.76	0.51

Continued on next page...

Continued from previous page...

Atom-1	Atom-2	Distance(Å)	Clash(Å)
2:B:130:TYR:N	2:B:131:PRO:CD	2.75	0.49
2:B:137:LEU:HD12	2:B:137:LEU:C	2.32	0.49
1:A:158:LEU:CD1	1:A:188:GLU:HB3	2.42	0.49
2:B:106:SER:HB2	5:B:320:HOH:O	2.12	0.49
1:A:186:LYS:HE2	1:A:188:GLU:OE1	2.13	0.48
2:B:116:THR:CG2	2:B:127:THR:CG2	2.91	0.46
1:A:125:ARG:NH2	1:A:126:ASP:OD1	2.36	0.46
1:A:77:GLU:HG2	1:A:80:GLU:CD	2.37	0.45
1:A:141:PHE:CZ	1:A:155:LEU:HB2	2.52	0.45
1:A:79:GLY:O	1:A:115:ARG:NE	2.50	0.44
1:A:154:ARG:HA	1:A:154:ARG:HD2	1.91	0.43
1:A:51:TYR:HA	1:A:106:LEU:O	2.19	0.42
1:A:216:GLY:O	4:A:700:D91:H191	2.20	0.42
1:A:70:ASP:OD2	1:A:73:THR:HG22	2.21	0.41
1:A:23:LYS:HD3	1:A:23:LYS:HA	1.70	0.41
1:A:124(A):GLU:CB	5:A:324:HOH:O	2.50	0.40
1:A:225:TYR:C	5:A:349:HOH:O	2.60	0.40
1:A:142:GLY:HA2	1:A:151:GLN:NE2	2.35	0.40
1:A:202:ARG:HD3	1:A:207:TYR:CZ	2.57	0.40

There are no symmetry-related clashes.

5.3 Torsion angles

5.3.1 Protein backbone ⓘ

In the following table, the Percentiles column shows the percent Ramachandran outliers of the chain as a percentile score with respect to all X-ray entries followed by that with respect to entries of similar resolution. The Analysed column shows the number of residues for which the backbone conformation was analysed, and the total number of residues.

Mol	Chain	Analysed	Favoured	Allowed	Outliers	Percentiles	
1	A	231/233 (99%)	219 (95%)	12 (5%)	0	100	100
2	B	52/95 (55%)	45 (86%)	6 (12%)	1 (2%)	12	9
All	All	283/328 (86%)	264 (93%)	18 (6%)	1 (0%)	43	52

All (1) Ramachandran outliers are listed below:

Mol	Chain	Res	Type
2	B	137	LEU

5.3.2 Protein sidechains ⓘ

In the following table, the Percentiles column shows the percent sidechain outliers of the chain as a percentile score with respect to all X-ray entries followed by that with respect to entries of similar resolution. The Analysed column shows the number of residues for which the sidechain conformation was analysed, and the total number of residues.

Mol	Chain	Analysed	Rotameric	Outliers	Percentiles	
1	A	177/198 (89%)	166 (94%)	11 (6%)	26	33
2	B	41/80 (51%)	37 (90%)	4 (10%)	12	13
All	All	218/278 (78%)	203 (93%)	15 (7%)	22	27

All (15) residues with a non-rotameric sidechain are listed below:

Mol	Chain	Res	Type
1	A	57	HIS
1	A	77	GLU
1	A	86	GLU
1	A	95	THR
1	A	143	ARG
1	A	145	HIS
1	A	164	ASP
1	A	168	CYS
1	A	209	VAL
1	A	210	THR
1	A	243	LYS
2	B	85	THR
2	B	90	SER
2	B	119	ASP
2	B	137	LEU

Some sidechains can be flipped to improve hydrogen bonding and reduce clashes. All (5) such sidechains are listed below:

Mol	Chain	Res	Type
1	A	145	HIS
1	A	151	GLN
1	A	166	ASN
2	B	93	ASN
2	B	135	GLN

5.3.3 RNA ⓘ

There are no RNA chains in this entry.

5.4 Non-standard residues in protein, DNA, RNA chains ⓘ

There are no non-standard protein/DNA/RNA residues in this entry.

5.5 Carbohydrates ⓘ

There are no carbohydrates in this entry.

5.6 Ligand geometry ⓘ

Of 3 ligands modelled in this entry, 2 are monoatomic - leaving 1 for Mogul analysis.

In the following table, the Counts columns list the number of bonds (or angles) for which Mogul statistics could be retrieved, the number of bonds (or angles) that are observed in the model and the number of bonds (or angles) that are defined in the chemical component dictionary. The Link column lists molecule types, if any, to which the group is linked. The Z score for a bond length (or angle) is the number of standard deviations the observed value is removed from the expected value. A bond length (or angle) with $|Z| > 2$ is considered an outlier worth inspection. RMSZ is the root-mean-square of all Z scores of the bond lengths (or angles).

Mol	Type	Chain	Res	Link	Bond lengths			Bond angles		
					Counts	RMSZ	$\# Z > 2$	Counts	RMSZ	$\# Z > 2$
4	D91	A	700	-	35,37,41	2.48	6 (17%)	49,54,60	32.98	14 (28%)

In the following table, the Chirals column lists the number of chiral outliers, the number of chiral centers analysed, the number of these observed in the model and the number defined in the chemical component dictionary. Similar counts are reported in the Torsion and Rings columns. '-' means no outliers of that kind were identified.

Mol	Type	Chain	Res	Link	Chirals	Torsions	Rings
4	D91	A	700	-	-	0/18/34/41	0/3/5/5

All (6) bond length outliers are listed below:

Mol	Chain	Res	Type	Atoms	Z	Observed(Å)	Ideal(Å)
4	A	700	D91	C8-N7	-9.88	1.32	1.37
4	A	700	D91	S11-N12	6.96	1.74	1.63
4	A	700	D91	C9-C8	4.35	1.47	1.39
4	A	700	D91	C5-C4	-3.55	1.34	1.42

Continued on next page...

Continued from previous page...

Mol	Chain	Res	Type	Atoms	Z	Observed(Å)	Ideal(Å)
4	A	700	D91	C9-C4	2.69	1.51	1.41
4	A	700	D91	C16-N17	-2.62	1.45	1.47

All (14) bond angle outliers are listed below:

Mol	Chain	Res	Type	Atoms	Z	Observed(°)	Ideal(°)
4	A	700	D91	C9-C8-S11	-230.40	115.84	125.21
4	A	700	D91	C21-C20-N17	6.15	127.13	119.79
4	A	700	D91	C15-C16-N17	-4.66	101.83	111.34
4	A	700	D91	C5-C6-CL	-4.32	113.31	119.77
4	A	700	D91	O14-S11-C8	-3.64	103.05	107.93
4	A	700	D91	C8-C9-C4	-3.49	97.88	106.13
4	A	700	D91	C8-S11-N12	-3.45	102.89	107.28
4	A	700	D91	O22-C20-N17	-3.29	115.66	120.34
4	A	700	D91	C15-N12-S11	3.24	122.89	117.00
4	A	700	D91	O13-S11-N12	2.98	109.75	106.71
4	A	700	D91	C16-N17-C20	2.58	125.00	117.47
4	A	700	D91	C29-C28-C25	-2.27	117.42	121.41
4	A	700	D91	C2-C1-C6	-2.14	116.25	119.22
4	A	700	D91	C24-N23-C21	2.11	118.64	116.29

There are no chirality outliers.

There are no torsion outliers.

There are no ring outliers.

5.7 Other polymers ⓘ

There are no such residues in this entry.

5.8 Polymer linkage issues

There are no chain breaks in this entry.

6 Fit of model and data ⓘ

6.1 Protein, DNA and RNA chains ⓘ

EDS was not executed - this section will therefore be empty.

6.2 Non-standard residues in protein, DNA, RNA chains ⓘ

EDS was not executed - this section will therefore be empty.

6.3 Carbohydrates ⓘ

EDS was not executed - this section will therefore be empty.

6.4 Ligands ⓘ

EDS was not executed - this section will therefore be empty.

6.5 Other polymers ⓘ

EDS was not executed - this section will therefore be empty.