



wwPDB X-ray Structure Validation Summary Report

Nov 4, 2014 – 11:13 AM EST

PDB ID : 1WUO
Title : Crystal structure of metallo-beta-lactamaseIMP-1 mutant (D81A)
Authors : Yamaguchi, Y.; Yamagata, Y.; Goto, M.
Deposited on : 2004-12-08
Resolution : 2.01 Å(reported)

This is a wwPDB validation summary report for a publicly released PDB entry.

We welcome your comments at validation@mail.wwpdb.org

A user guide is available at <http://wwpdb.org/ValidationPDFNotes.html>

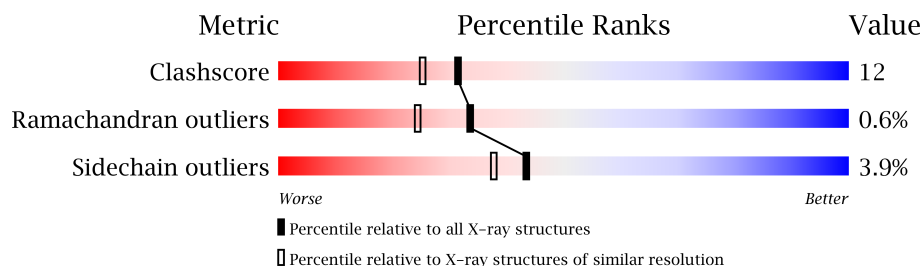
The following versions of software and data (see [references](#)) were used in the production of this report:

MolProbity : 4.02b-467
Mogul : 1.16 November 2013
Xtriage (Phenix) : **NOT EXECUTED**
EDS : **NOT EXECUTED**
Percentile statistics : 21963
Ideal geometry (proteins) : Engh & Huber (2001)
Ideal geometry (DNA, RNA) : Parkinson et. al. (1996)
Validation Pipeline (wwPDB-VP) : stable24103

1 Overall quality at a glance

The reported resolution of this entry is 2.01 Å.

Percentile scores (ranging between 0-100) for global validation metrics of the entry are shown in the following graphic. The table shows the number of entries on which the scores are based.



Metric	Whole archive (#Entries)	Similar resolution (#Entries, resolution range(Å))
Clashscore	79885	6188 (2.00-2.00)
Ramachandran outliers	78287	6102 (2.00-2.00)
Sidechain outliers	78261	6100 (2.00-2.00)

The table below summarises the geometric issues observed across the polymeric chains and their fit to the electron density. The red, orange, yellow and green segments on the lower bar indicate the fraction of residues that contain outliers for ≥ 3 , 2, 1 and 0 types of geometric quality criteria. The upper red bar (where present) indicates the fraction of residues that have poor fit to the electron density.

Note EDS was not executed.

Mol	Chain	Length	Quality of chain
1	A	228	
1	B	228	
1	C	228	
1	D	228	

2 Entry composition

There are 4 unique types of molecules in this entry. The entry contains 7223 atoms, of which 0 are hydrogen and 0 are deuterium.

In the tables below, the ZeroOcc column contains the number of atoms modelled with zero occupancy, the AltConf column contains the number of residues with at least one atom in alternate conformation and the Trace column contains the number of residues modelled with at most 2 atoms.

- Molecule 1 is a protein called Beta-lactamase IMP-1.

Mol	Chain	Residues	Atoms					ZeroOcc	AltConf	Trace
1	A	219	Total	C	N	O	S	0	0	0
			1711	1109	282	319	1			
1	B	219	Total	C	N	O	S	0	0	0
			1711	1109	282	319	1			
1	C	219	Total	C	N	O	S	0	0	0
			1711	1109	282	319	1			
1	D	219	Total	C	N	O	S	0	0	0
			1711	1109	282	319	1			

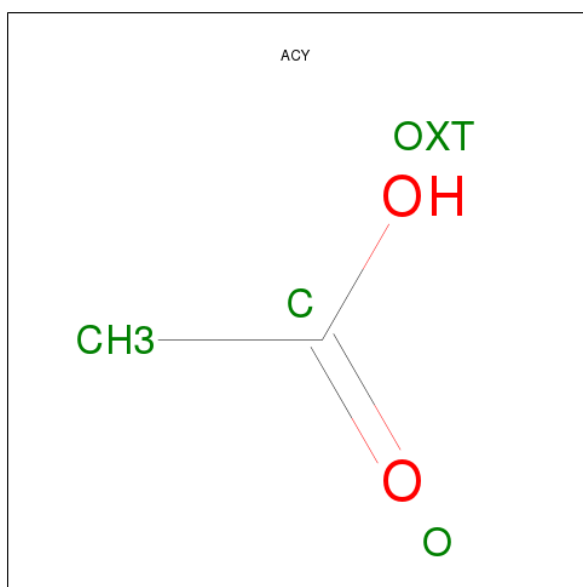
There are 4 discrepancies between the modelled and reference sequences:

Chain	Residue	Modelled	Actual	Comment	Reference
A	81	ALA	ASP	ENGINEERED MUTATION	UNP P52699
B	81	ALA	ASP	ENGINEERED MUTATION	UNP P52699
C	81	ALA	ASP	ENGINEERED MUTATION	UNP P52699
D	81	ALA	ASP	ENGINEERED MUTATION	UNP P52699

- Molecule 2 is ZINC ION (three-letter code: ZN) (formula: Zn).

Mol	Chain	Residues	Atoms		ZeroOcc	AltConf
2	B	1	Total	Zn	0	0
			1	1		
2	A	1	Total	Zn	0	0
			1	1		
2	D	1	Total	Zn	0	0
			1	1		
2	C	1	Total	Zn	0	0
			1	1		

- Molecule 3 is ACETIC ACID (three-letter code: ACY) (formula: C₂H₄O₂).



Mol	Chain	Residues	Atoms			ZeroOcc	AltConf
3	A	1	Total	C	O	0	0
			4	2	2		
3	B	1	Total	C	O	0	0
			4	2	2		
3	C	1	Total	C	O	0	0
			4	2	2		
3	D	1	Total	C	O	0	0
			4	2	2		

- Molecule 4 is water.

Mol	Chain	Residues	Atoms		ZeroOcc	AltConf
4	A	73	Total	O	0	0
			73	73		
4	B	88	Total	O	0	0
			88	88		
4	C	108	Total	O	0	0
			108	108		
4	D	90	Total	O	0	0
			90	90		

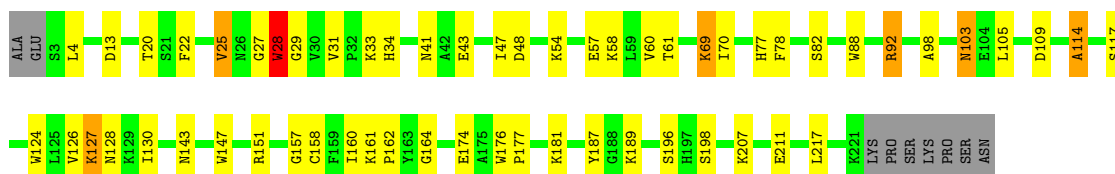
3 Residue-property plots

These plots are drawn for all protein, RNA and DNA chains in the entry. The first graphic for a chain summarises the proportions of errors displayed in the second graphic. The second graphic shows the sequence view annotated by issues in geometry and electron density. Residues are color-coded according to the number of geometric quality criteria for which they contain at least one outlier: green = 0, yellow = 1, orange = 2 and red = 3 or more. A red dot above a residue indicates a poor fit to the electron density ($RSRZ > 2$). Stretches of 2 or more consecutive residues without any outlier are shown as a green connector. Residues present in the sample, but not in the model, are shown in grey.

Note EDS was not executed.

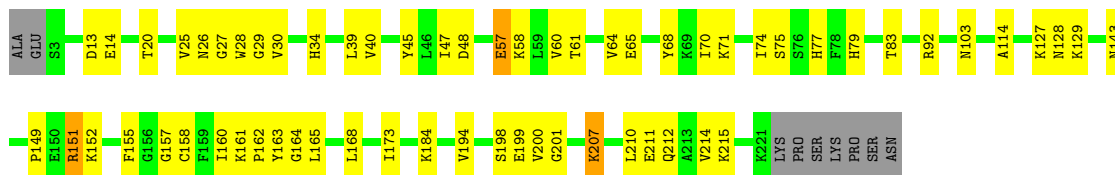
• Molecule 1: Beta-lactamase IMP-1

Chain A: 



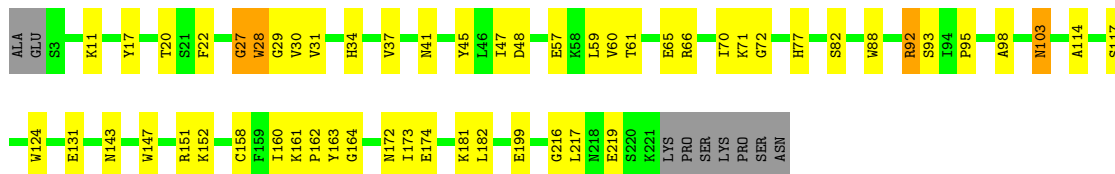
• Molecule 1: Beta-lactamase IMP-1

Chain B: 



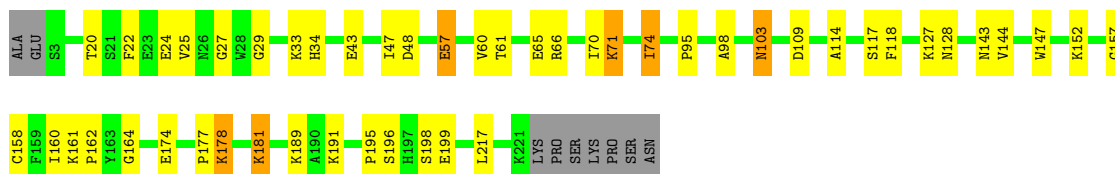
• Molecule 1: Beta-lactamase IMP-1

Chain C: 



• Molecule 1: Beta-lactamase IMP-1

Chain D: 



4 Data and refinement statistics

Xtriage (Phenix) and EDS were not executed - this section will therefore be incomplete.

Property	Value	Source
Space group	P 1	Depositor
Cell constants a, b, c, α , β , γ	49.73Å 73.02Å 82.45Å 85.37° 75.53° 73.62°	Depositor
Resolution (Å)	46.35 – 2.01	Depositor
% Data completeness (in resolution range)	94.9 (46.35-2.01)	Depositor
R_{merge}	(Not available)	Depositor
R_{sym}	(Not available)	Depositor
Refinement program	CNS 1.1	Depositor
R, R_{free}	0.212 , 0.218	Depositor
Estimated twinning fraction	No twinning to report.	Xtriage
Total number of atoms	7223	wwPDB-VP
Average B, all atoms (Å ²)	30.0	wwPDB-VP

5 Model quality

5.1 Standard geometry

Bond lengths and bond angles in the following residue types are not validated in this section: CSD, ZN, ACY

The Z score for a bond length (or angle) is the number of standard deviations the observed value is removed from the expected value. A bond length (or angle) with $|Z| > 5$ is considered an outlier worth inspection. RMSZ is the root-mean-square of all Z scores of the bond lengths (or angles).

Mol	Chain	Bond lengths		Bond angles	
		RMSZ	# $ Z > 5$	RMSZ	# $ Z > 5$
1	A	1.09	3/1747 (0.2%)	0.96	0/2371
1	B	0.98	0/1747	0.94	3/2371 (0.1%)
1	C	1.06	0/1747	0.94	0/2371
1	D	1.03	2/1747 (0.1%)	0.95	3/2371 (0.1%)
All	All	1.04	5/6988 (0.1%)	0.95	6/9484 (0.1%)

All (5) bond length outliers are listed below:

Mol	Chain	Res	Type	Atoms	Z	Observed(Å)	Ideal(Å)
1	D	33	LYS	CB-CG	6.56	1.70	1.52
1	A	114	ALA	CA-CB	6.34	1.65	1.52
1	A	33	LYS	CD-CE	5.66	1.65	1.51
1	D	144	VAL	CB-CG1	5.22	1.63	1.52
1	A	13	ASP	CB-CG	5.03	1.62	1.51

The worst 5 of 6 bond angle outliers are listed below:

Mol	Chain	Res	Type	Atoms	Z	Observed(°)	Ideal(°)
1	B	92	ARG	NE-CZ-NH2	-6.56	117.02	120.30
1	D	74	ILE	CG1-CB-CG2	-5.50	99.31	111.40
1	B	74	ILE	CG1-CB-CG2	-5.42	99.47	111.40
1	B	13	ASP	CB-CG-OD2	5.28	123.05	118.30
1	D	66	ARG	NE-CZ-NH1	5.24	122.92	120.30

There are no chirality outliers.

There are no planarity outliers.

5.2 Close contacts ⓘ

In the following table, the Non-H and H(model) columns list the number of non-hydrogen atoms and hydrogen atoms in the chain respectively. The H(added) column lists the number of hydrogens added by MolProbity. The Clashes column lists the number of clashes within the asymmetric unit, and the number in parentheses is this value normalized per 1000 atoms of the molecule in the chain. The Symm-Clashes column gives symmetry related clashes, in the same way as for the Clashes column.

Mol	Chain	Non-H	H(model)	H(added)	Clashes	Symm-Clashes
1	A	1711	0	1724	40	1
1	B	1711	0	1724	48	0
1	C	1711	0	1724	44	0
1	D	1711	0	1724	31	0
2	A	1	0	0	0	0
2	B	1	0	0	0	0
2	C	1	0	0	0	0
2	D	1	0	0	0	0
3	A	4	0	3	0	0
3	B	4	0	3	3	0
3	C	4	0	3	0	0
3	D	4	0	3	0	0
4	A	73	0	0	1	0
4	B	88	0	0	5	0
4	C	108	0	0	1	1
4	D	90	0	0	2	0
All	All	7223	0	6908	159	1

Clashscore is defined as the number of clashes calculated for the entry per 1000 atoms (including hydrogens) of the entry. The overall clashscore for this entry is 12.

The worst 5 of 159 close contacts within the same asymmetric unit are listed below.

Atom-1	Atom-2	Distance(Å)	Clash(Å)
1:C:158:CSD:SG	1:C:158:CSD:OD1	1.91	1.28
1:A:158:CSD:OD1	1:A:158:CSD:SG	1.93	1.26
1:D:158:CSD:OD1	1:D:158:CSD:SG	1.94	1.25
1:B:158:CSD:OD1	1:B:158:CSD:SG	1.96	1.23
1:A:103:ASN:HD21	1:A:114:ALA:H	1.22	0.87

All (1) symmetry-related close contacts are listed below. The label for Atom-2 includes the symmetry operator and encoded unit-cell translations to be applied.

Atom-1	Atom-2	Distance(Å)	Clash(Å)
1:A:41:ASN:O	4:C:439:HOH:O[1_654]	2.08	0.12

5.3 Torsion angles

5.3.1 Protein backbone ⓘ

In the following table, the Percentiles column shows the percent Ramachandran outliers of the chain as a percentile score with respect to all X-ray entries followed by that with respect to entries of similar resolution.

The Analysed column shows the number of residues for which the backbone conformation was analysed, and the total number of residues.

Mol	Chain	Analysed	Favoured	Allowed	Outliers	Percentiles	
1	A	216/228 (95%)	202 (94%)	11 (5%)	3 (1%)	16	7
1	B	216/228 (95%)	204 (94%)	12 (6%)	0	100	100
1	C	216/228 (95%)	204 (94%)	10 (5%)	2 (1%)	25	14
1	D	216/228 (95%)	206 (95%)	10 (5%)	0	100	100
All	All	864/912 (95%)	816 (94%)	43 (5%)	5 (1%)	33	24

All (5) Ramachandran outliers are listed below:

Mol	Chain	Res	Type
1	A	127	LYS
1	C	41	ASN
1	A	28	TRP
1	A	25	VAL
1	C	27	GLY

5.3.2 Protein sidechains ⓘ

In the following table, the Percentiles column shows the percent sidechain outliers of the chain as a percentile score with respect to all X-ray entries followed by that with respect to entries of similar resolution. The Analysed column shows the number of residues for which the sidechain conformation was analysed, and the total number of residues.

Mol	Chain	Analysed	Rotameric	Outliers	Percentiles	
1	A	186/194 (96%)	177 (95%)	9 (5%)	35	28
1	B	186/194 (96%)	181 (97%)	5 (3%)	57	56
1	C	186/194 (96%)	181 (97%)	5 (3%)	57	56
1	D	186/194 (96%)	176 (95%)	10 (5%)	31	24
All	All	744/776 (96%)	715 (96%)	29 (4%)	43	38

5 of 29 residues with a non-rotameric sidechain are listed below:

Mol	Chain	Res	Type
1	B	207	LYS
1	C	103	ASN
1	D	178	LYS
1	C	28	TRP
1	C	143	ASN

Some sidechains can be flipped to improve hydrogen bonding and reduce clashes. 5 of 22 such sidechains are listed below:

Mol	Chain	Res	Type
1	B	116	ASN
1	C	34	HIS
1	D	103	ASN
1	B	128	ASN
1	B	212	GLN

5.3.3 RNA ⓘ

There are no RNA chains in this entry.

5.4 Non-standard residues in protein, DNA, RNA chains ⓘ

4 non-standard protein/DNA/RNA residues are modelled in this entry.

In the following table, the Counts columns list the number of bonds (or angles) for which Mogul statistics could be retrieved, the number of bonds (or angles) that are observed in the model and the number of bonds (or angles) that are defined in the chemical component dictionary. The Link column lists molecule types, if any, to which the group is linked. The Z score for a bond length (or angle) is the number of standard deviations the observed value is removed from the expected value. A bond length (or angle) with $|Z| > 2$ is considered an outlier worth inspection. RMSZ is the root-mean-square of all Z scores of the bond lengths (or angles).

Mol	Type	Chain	Res	Link	Bond lengths			Bond angles		
					Counts	RMSZ	$\# Z > 2$	Counts	RMSZ	$\# Z > 2$
1	CSD	A	158	1	7,7,8	17.58	5 (71%)	6,8,10	5.31	3 (50%)
1	CSD	B	158	1	7,7,8	18.84	6 (85%)	6,8,10	8.14	5 (83%)
1	CSD	C	158	1	7,7,8	17.21	4 (57%)	6,8,10	6.10	4 (66%)
1	CSD	D	158	1	7,7,8	18.44	4 (57%)	6,8,10	5.07	5 (83%)

In the following table, the Chirals column lists the number of chiral outliers, the number of chiral centers analysed, the number of these observed in the model and the number defined in the chemical

component dictionary. Similar counts are reported in the Torsion and Rings columns. '-' means no outliers of that kind were identified.

Mol	Type	Chain	Res	Link	Chirals	Torsions	Rings
1	CSD	A	158	1	-	1/3/6/8	0/0/0/0
1	CSD	B	158	1	-	0/3/6/8	0/0/0/0
1	CSD	C	158	1	-	1/3/6/8	0/0/0/0
1	CSD	D	158	1	-	1/3/6/8	0/0/0/0

The worst 5 of 19 bond length outliers are listed below:

Mol	Chain	Res	Type	Atoms	Z	Observed(Å)	Ideal(Å)
1	B	158	CSD	OD1-SG	44.37	1.96	1.47
1	D	158	CSD	OD1-SG	42.53	1.94	1.47
1	A	158	CSD	OD1-SG	41.36	1.93	1.47
1	C	158	CSD	OD1-SG	39.67	1.91	1.47
1	D	158	CSD	O-C	23.25	1.27	1.11

The worst 5 of 17 bond angle outliers are listed below:

Mol	Chain	Res	Type	Atoms	Z	Observed(°)	Ideal(°)
1	B	158	CSD	CA-CB-SG	17.76	136.17	110.82
1	C	158	CSD	CA-CB-SG	13.09	129.49	110.82
1	D	158	CSD	CA-CB-SG	10.72	126.12	110.82
1	A	158	CSD	CA-CB-SG	10.52	125.82	110.82
1	B	158	CSD	C-CA-N	-7.00	106.84	113.83

There are no chirality outliers.

All (3) torsion outliers are listed below:

Mol	Chain	Res	Type	Atoms
1	A	158	CSD	CA-CB-SG-OD1
1	D	158	CSD	CA-CB-SG-OD1
1	C	158	CSD	CA-CB-SG-OD1

There are no ring outliers.

5.5 Carbohydrates ⓘ

There are no carbohydrates in this entry.

5.6 Ligand geometry

Of 8 ligands modelled in this entry, 4 are monoatomic - leaving 4 for Mogul analysis.

In the following table, the Counts columns list the number of bonds (or angles) for which Mogul statistics could be retrieved, the number of bonds (or angles) that are observed in the model and the number of bonds (or angles) that are defined in the chemical component dictionary. The Link column lists molecule types, if any, to which the group is linked. The Z score for a bond length (or angle) is the number of standard deviations the observed value is removed from the expected value. A bond length (or angle) with $|Z| > 2$ is considered an outlier worth inspection. RMSZ is the root-mean-square of all Z scores of the bond lengths (or angles).

Mol	Type	Chain	Res	Link	Bond lengths			Bond angles		
					Counts	RMSZ	$\# Z > 2$	Counts	RMSZ	$\# Z > 2$
3	ACY	A	401	2	3,3,3	0.92	0	3,3,3	0.83	0
3	ACY	B	402	2	3,3,3	0.85	0	3,3,3	0.68	0
3	ACY	C	403	2	3,3,3	0.86	0	3,3,3	0.62	0
3	ACY	D	404	2	3,3,3	0.63	0	3,3,3	0.66	0

In the following table, the Chirals column lists the number of chiral outliers, the number of chiral centers analysed, the number of these observed in the model and the number defined in the chemical component dictionary. Similar counts are reported in the Torsion and Rings columns. '-' means no outliers of that kind were identified.

Mol	Type	Chain	Res	Link	Chirals	Torsions	Rings
3	ACY	A	401	2	-	0/0/0/0	0/0/0/0
3	ACY	B	402	2	-	0/0/0/0	0/0/0/0
3	ACY	C	403	2	-	0/0/0/0	0/0/0/0
3	ACY	D	404	2	-	0/0/0/0	0/0/0/0

There are no bond length outliers.

There are no bond angle outliers.

There are no chirality outliers.

There are no torsion outliers.

There are no ring outliers.

5.7 Other polymers

There are no such residues in this entry.

5.8 Polymer linkage issues

There are no chain breaks in this entry.

6 Fit of model and data ⓘ

6.1 Protein, DNA and RNA chains ⓘ

EDS was not executed - this section will therefore be empty.

6.2 Non-standard residues in protein, DNA, RNA chains ⓘ

EDS was not executed - this section will therefore be empty.

6.3 Carbohydrates ⓘ

EDS was not executed - this section will therefore be empty.

6.4 Ligands ⓘ

EDS was not executed - this section will therefore be empty.

6.5 Other polymers ⓘ

EDS was not executed - this section will therefore be empty.