



Full wwPDB X-ray Structure Validation Report

Feb 28, 2014 – 06:45 PM GMT

PDB ID : 2WU3
Title : CRYSTAL STRUCTURE OF MOUSE ACETYLCHOLINESTERASE IN
COMPLEX WITH FENAMIPHOS AND HI-6
Authors : Hornberg, A.; Artursson, E.; Warne, R.; Pang, Y.-P.; Ekstrom, F.
Deposited on : 2009-09-28
Resolution : 2.70 Å(reported)

This is a full wwPDB validation report for a publicly released PDB entry.
We welcome your comments at validation@mail.wwpdb.org
A user guide is available at <http://wwpdb.org/ValidationPDFNotes.html>

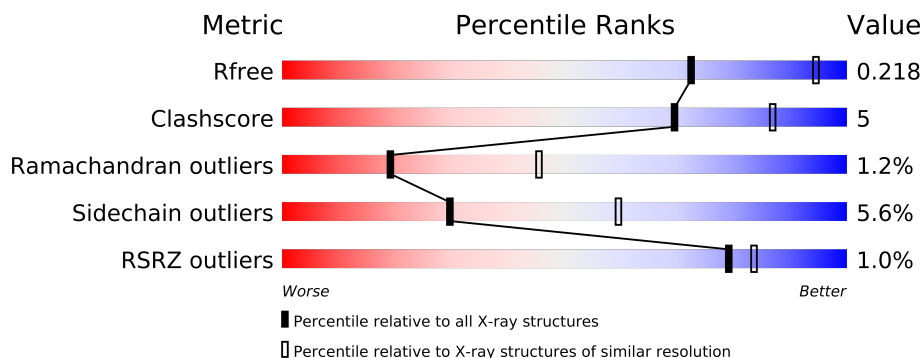
The following versions of software and data (see [references](#)) were used in the production of this report:

MolProbity : 4.02b-467
Mogul : 1.15 2013
Xtriage (Phenix) : dev-1323
EDS : stable22639
Percentile statistics : 21963
Refmac : 5.8.0049
CCP4 : 6.3.0 (Settle)
Ideal geometry (proteins) : Engh & Huber (2001)
Ideal geometry (DNA, RNA) : Parkinson et. al. (1996)
Validation Pipeline (wwPDB-VP) : stable22683

1 Overall quality at a glance

The reported resolution of this entry is 2.70 Å.

Percentile scores (ranging between 0-100) for global validation metrics of the entry are shown in the following graphic. The table shows the number of entries on which the scores are based.



Metric	Whole archive (#Entries)	Similar resolution (#Entries, resolution range(Å))
R_{free}	66092	1557 (2.70-2.70)
Clashscore	79885	1939 (2.70-2.70)
Ramachandran outliers	78287	1905 (2.70-2.70)
Sidechain outliers	78261	1905 (2.70-2.70)
RSRZ outliers	66119	1559 (2.70-2.70)

The table below summarises the geometric issues observed across the polymeric chains and their fit to the electron density. The red, orange, yellow and green segments on the lower bar indicate the fraction of residues that contain outliers for ≥ 3 , 2, 1 and 0 types of geometric quality criteria. The upper red bar (where present) indicates the fraction of residues that have poor fit to the electron density.

Mol	Chain	Length	Quality of chain
1	A	548	
1	B	548	

The following table lists non-polymeric compounds that are outliers for geometric or electron-density-fit criteria:

Mol	Type	Chain	Res	Geometry	Electron density
2	HI6	A	601	-	X
2	HI6	B	601	-	X
3	NAG	C	601	-	X
3	NAG	C	701	-	X
4	P6G	C	901	-	X
5	CO3	D	951	-	X
5	CO3	D	952	-	X

2 Entry composition i

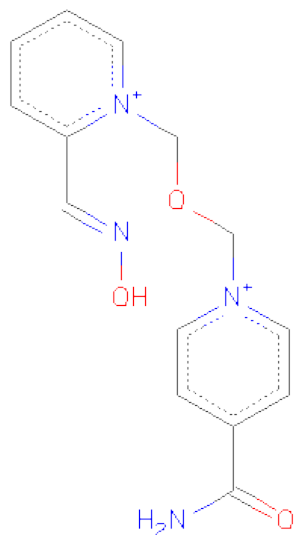
There are 6 unique types of molecules in this entry. The entry contains 8805 atoms, of which 0 are hydrogen and 0 are deuterium.

In the tables below, the ZeroOcc column contains the number of atoms modelled with zero occupancy, the AltConf column contains the number of residues with at least one atom in alternate conformation and the Trace column contains the number of residues modelled with at most 2 atoms.

- Molecule 1 is a protein called ACETYLCHOLINESTERASE.

Mol	Chain	Residues	Atoms						ZeroOcc	AltConf	Trace
			Total	C	N	O	P	S			
1	A	539	4239	2715	733	775	2	14	0	2	0
1	B	533	4184	2684	724	760	2	14	0	1	0

- Molecule 2 is 4-(AMINOCARBONYL)-1-[(2-[(E)-(HYDROXYIMINO)METHYL]PYRIDINIUM-1-YL}METHOXY)METHYL]PYRIDINIUM (three-letter code: HI6) (formula: C₁₄H₁₆N₄O₃).



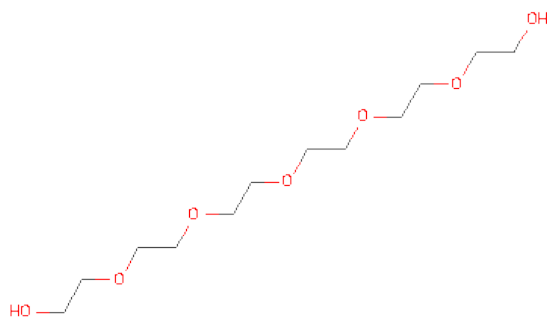
Mol	Chain	Residues	Atoms				ZeroOcc	AltConf
			Total	C	N	O		
2	A	1	18	13	3	2	0	0
2	B	1	18	13	3	2	0	0

- Molecule 3 is SUGAR (N-ACETYL-D-GLUCOSAMINE) (three-letter code: NAG) (formula: C₈H₁₅NO₆).



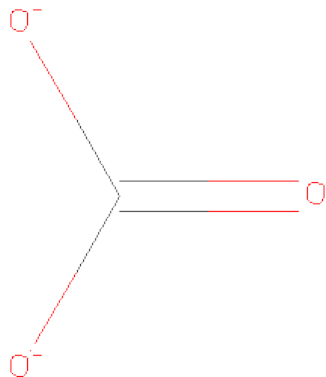
Mol	Chain	Residues	Atoms				ZeroOcc	AltConf
3	C	1	Total	C	N	O	0	0
			14	8	1	5		
3	C	1	Total	C	N	O	0	0
			14	8	1	5		

- Molecule 4 is HEXAETHYLENE GLYCOL (three-letter code: P6G) (formula: C₁₂H₂₆O₇).



Mol	Chain	Residues	Atoms			ZeroOcc	AltConf
4	C	1	Total	C	O	0	0
			19	12	7		

- Molecule 5 is CARBONATE ION (three-letter code: CO3) (formula: CO₃).



Mol	Chain	Residues	Atoms			ZeroOcc	AltConf
5	D	1	Total	C	O	0	0
			4	1	3		
5	D	1	Total	C	O	0	0
			4	1	3		

- Molecule 6 is water.

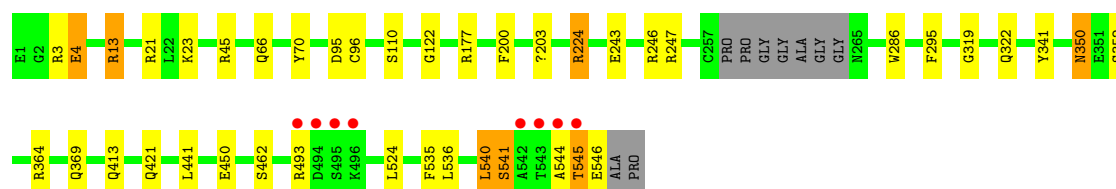
Mol	Chain	Residues	Atoms		ZeroOcc	AltConf
6	A	160	Total	O	0	0
			160	160		
6	B	125	Total	O	0	0
			125	125		
6	C	4	Total	O	0	0
			4	4		
6	D	2	Total	O	0	0
			2	2		

3 Residue-property plots

These plots are drawn for all protein, RNA and DNA chains in the entry. The first graphic for a chain summarises the proportions of errors displayed in the second graphic. The second graphic shows the sequence view annotated by issues in geometry and electron density. Residues are color-coded according to the number of geometric quality criteria for which they contain at least one outlier: green = 0, yellow = 1, orange = 2 and red = 3 or more. A red dot above a residue indicates a poor fit to the electron density ($RSRZ > 2$). Stretches of 2 or more consecutive residues without any outlier are shown as a green connector. Residues present in the sample, but not in the model, are shown in grey.

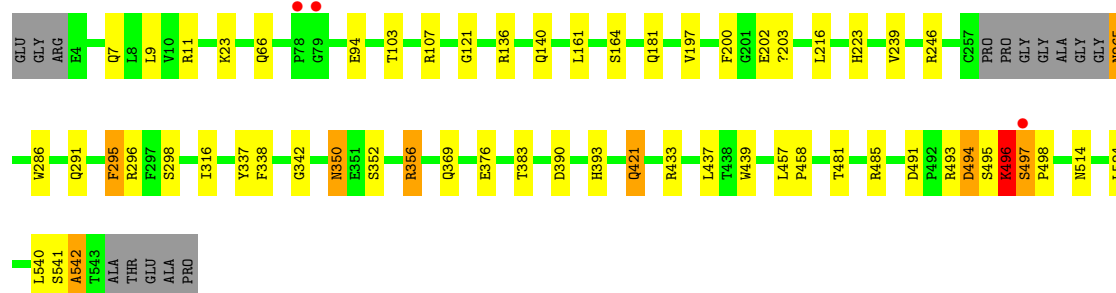
• Molecule 1: ACETYLCHOLINESTERASE

Chain A: 



• Molecule 1: ACETYLCHOLINESTERASE

Chain B: 



4 Data and refinement statistics

Property	Value	Source
Space group	P 21 21 21	Depositor
Cell constants a, b, c, α , β , γ	78.76Å 111.23Å 227.70Å 90.00° 90.00° 90.00°	Depositor
Resolution (Å)	29.02 – 2.70 29.02 – 2.70	Depositor EDS
% Data completeness (in resolution range)	100.0 (29.02-2.70) 100.0 (29.02-2.70)	Depositor EDS
R_{merge}	0.08	Depositor
R_{sym}	(Not available)	Depositor
$\langle I/\sigma(I) \rangle$ ¹	4.39 (at 2.72Å)	Xtriage
Refinement program	PHENIX (PHENIX.REFINE)	Depositor
R, R_{free}	0.171 , 0.226 0.165 , 0.218	Depositor DCC
R_{free} test set	1098 reflections (1.97%)	DCC
Wilson B-factor (Å ²)	52.2	Xtriage
Anisotropy	0.095	Xtriage
Bulk solvent k_{sol} (e/Å ³), B_{sol} (Å ²)	0.30 , 35.1	EDS
Estimated twinning fraction	No twinning to report.	Xtriage
L-test for twinning	$\langle L \rangle = 0.48$, $\langle L^2 \rangle = 0.31$	Xtriage
Outliers	0 of 55785 reflections	Xtriage
F_o, F_c correlation	0.96	EDS
Total number of atoms	8805	wwPDB-VP
Average B, all atoms (Å ²)	53.0	wwPDB-VP

Xtriage's analysis on translational NCS is as follows: *The largest off-origin peak in the Patterson function is 2.78% of the height of the origin peak. No significant pseudotranslation is detected.*

¹Intensities estimated from amplitudes.

5 Model quality

5.1 Standard geometry

Bond lengths and bond angles in the following residue types are not validated in this section: CO3, P6G, NAG, HI6, SXE

The Z score for a bond length (or angle) is the number of standard deviations the observed value is removed from the expected value. A bond length (or angle) with $|Z| > 5$ is considered an outlier worth inspection. RMSZ is the root-mean-square of all Z scores of the bond lengths (or angles).

Mol	Chain	Bond lengths		Bond angles	
		RMSZ	$\# Z > 5$	RMSZ	$\# Z > 5$
1	A	0.56	1/4334 (0.0%)	0.69	2/5919 (0.0%)
1	B	0.51	0/4276	0.66	0/5842
All	All	0.53	1/8610 (0.0%)	0.68	2/11761 (0.0%)

Chiral center outliers are detected by calculating the chiral volume of a chiral center and verifying if the center is modelled as a planar moiety or with the opposite hand. A planarity outlier is detected by checking planarity of atoms in a peptide group, atoms in a mainchain group or atoms of a sidechain that are expected to be planar.

Mol	Chain	#Chirality outliers	#Planarity outliers
1	A	0	2

All (1) bond length outliers are listed below:

Mol	Chain	Res	Type	Atoms	Z	Observed(Å)	Ideal(Å)
1	A	96	CYS	CB-SG	-8.67	1.67	1.82

All (2) bond angle outliers are listed below:

Mol	Chain	Res	Type	Atoms	Z	Observed(°)	Ideal(°)
1	A	541	SER	N-CA-C	-5.57	95.95	111.00
1	A	540	LEU	CA-CB-CG	-5.01	103.78	115.30

There are no chirality outliers.

All (2) planarity outliers are listed below:

Mol	Chain	Res	Type	Group
1	A	540	LEU	Peptide
1	A	95	ASP	Peptide

5.2 Close contacts ⓘ

In the following table, the Non-H and H(model) columns list the number of non-hydrogen atoms and hydrogen atoms in the chain respectively. The H(added) column lists the number of hydrogens added by MolProbity. The Clashes column lists the number of clashes within the asymmetric unit, and the number in parentheses is this value normalized per 1000 atoms of the molecule in the chain. The Symm-Clashes column gives symmetry related clashes, in the same way as for the Clashes column.

Mol	Chain	Non-H	H(model)	H(added)	Clashes	Symm-Clashes
1	A	4239	0	0	16	0
1	B	4184	0	0	24	0
2	A	18	0	0	3	0
2	B	18	0	0	3	0
3	C	28	0	26	1	0
4	C	19	0	24	1	0
5	D	8	0	0	0	0
6	A	160	0	0	3	0
6	B	125	0	0	2	0
6	C	4	0	0	0	0
6	D	2	0	0	0	0
All	All	8805	0	50	40	0

Clashscore is defined as the number of clashes calculated for the entry per 1000 atoms (including hydrogens) of the entry. The overall clashscore for this entry is 5.

All (40) close contacts within the same asymmetric unit are listed below.

Atom-1	Atom-2	Distance(Å)	Clash(Å)
1:A:350:ASN:OD1	3:C:601:NAG:C1	2.22	0.87
1:A:350:ASN:ND2	1:A:352:SER:N	2.46	0.62
1:B:497:SER:CB	1:B:498:PRO:O	2.51	0.59
1:B:7:GLN:NE2	1:B:107:ARG:N	2.52	0.57
1:A:13:ARG:NH2	6:A:2001:HOH:O	2.38	0.56
1:A:243:GLU:OE1	1:A:247:ARG:NE	2.42	0.53
1:A:545:THR:O	1:A:546:GLU:CB	2.58	0.52
1:B:493:ARG:O	1:B:494:ASP:CB	2.59	0.51
1:B:298:SER:N	2:B:601:HI6:O3	2.44	0.50
1:B:495:SER:O	1:B:496:LYS:O	2.30	0.50
1:B:286:TRP:CH2	2:B:601:HI6:C8	2.95	0.49
1:A:224:ARG:CG	1:A:224:ARG:NH1	2.73	0.49
1:B:390:ASP:OD2	1:B:393:HIS:ND1	2.45	0.49
1:B:265:ASN:C	1:B:265:ASN:OD1	2.52	0.48
1:A:350:ASN:C	1:A:350:ASN:ND2	2.67	0.48
1:B:540:LEU:O	1:B:542:ALA:N	2.48	0.46

Continued on next page...

Continued from previous page...

Atom-1	Atom-2	Distance(Å)	Clash(Å)
1:B:356:ARG:NH1	1:B:383:THR:OG1	2.48	0.46
1:B:497:SER:CB	1:B:498:PRO:C	2.84	0.46
1:A:341:TYR:CD1	2:A:601:HI6:C7	2.98	0.46
1:A:122:GLY:N	1:A:203[B]:SXE:O1	2.50	0.45
1:B:265:ASN:ND2	6:B:2063:HOH:O	2.50	0.44
1:B:350:ASN:ND2	1:B:352:SER:N	2.65	0.44
1:B:202:GLU:O	1:B:203[A]:SXE:CB	2.66	0.44
1:A:177:ARG:NH1	6:A:2068:HOH:O	2.50	0.44
1:A:286:TRP:CZ2	2:A:601:HI6:C8	3.01	0.44
1:B:197:VAL:N	1:B:223:HIS:ND1	2.65	0.44
1:A:535:PHE:CE2	4:C:901:P6G:H91	2.53	0.43
1:B:481:THR:OG1	1:B:485:ARG:NH2	2.51	0.43
1:A:122:GLY:N	1:A:203[A]:SXE:O1	2.52	0.42
1:A:450:GLU:OE1	1:A:450:GLU:N	2.52	0.42
1:B:457:LEU:N	1:B:458:PRO:CD	2.83	0.41
1:B:107:ARG:NE	6:B:2025:HOH:O	2.52	0.41
1:B:433:ARG:NH2	1:B:439:TRP:O	2.53	0.41
1:A:203[A]:SXE:C5	2:A:601:HI6:C4	2.98	0.41
1:B:295:PHE:CE2	1:B:338:PHE:CZ	3.08	0.41
1:B:337:TYR:CE2	2:B:601:HI6:C4	3.04	0.41
1:B:540:LEU:C	1:B:542:ALA:N	2.73	0.41
1:A:364:ARG:NE	6:A:2121:HOH:O	2.53	0.41
1:B:161:LEU:O	1:B:164:SER:OG	2.38	0.41
1:B:316:ILE:O	1:B:421:GLN:NE2	2.54	0.40

There are no symmetry-related clashes.

5.3 Torsion angles

5.3.1 Protein backbone ⓘ

In the following table, the Percentiles column shows the percent Ramachandran outliers of the chain as a percentile score with respect to all X-ray entries followed by that with respect to entries of similar resolution. The Analysed column shows the number of residues for which the backbone conformation was analysed, and the total number of residues.

Mol	Chain	Analysed	Favoured	Allowed	Outliers	Percentiles	
1	A	535/548 (98%)	505 (94%)	24 (4%)	6 (1%)	21	49
1	B	528/548 (96%)	500 (95%)	21 (4%)	7 (1%)	18	43
All	All	1063/1096 (97%)	1005 (94%)	45 (4%)	13 (1%)	19	45

All (13) Ramachandran outliers are listed below:

Mol	Chain	Res	Type
1	A	4	GLU
1	A	541	SER
1	A	544	ALA
1	A	545	THR
1	B	494	ASP
1	B	496	LYS
1	B	542	ALA
1	A	319	GLY
1	B	497	SER
1	B	541	SER
1	A	493	ARG
1	B	342	GLY
1	B	121	GLY

5.3.2 Protein sidechains ⓘ

In the following table, the Percentiles column shows the percent sidechain outliers of the chain as a percentile score with respect to all X-ray entries followed by that with respect to entries of similar resolution. The Analysed column shows the number of residues for which the sidechain conformation was analysed, and the total number of residues.

Mol	Chain	Analysed	Rotameric	Outliers	Percentiles	
1	A	443/445 (100%)	421 (95%)	22 (5%)	34	66
1	B	437/445 (98%)	410 (94%)	27 (6%)	26	54
All	All	880/890 (99%)	831 (94%)	49 (6%)	30	59

All (49) residues with a non-rotameric sidechain are listed below:

Mol	Chain	Res	Type
1	A	3	ARG
1	A	4	GLU
1	A	13	ARG
1	A	21	ARG
1	A	23	LYS
1	A	45	ARG
1	A	66	GLN
1	A	70	TYR
1	A	110	SER
1	A	200	PHE
1	A	224	ARG

Continued on next page...

Continued from previous page...

Mol	Chain	Res	Type
1	A	246	ARG
1	A	295	PHE
1	A	322	GLN
1	A	350	ASN
1	A	369	GLN
1	A	413	GLN
1	A	421	GLN
1	A	441	LEU
1	A	462	SER
1	A	524	LEU
1	A	536	LEU
1	B	9	LEU
1	B	11	ARG
1	B	23	LYS
1	B	66	GLN
1	B	94	GLU
1	B	103	THR
1	B	136	ARG
1	B	140	GLN
1	B	181	GLN
1	B	200	PHE
1	B	216	LEU
1	B	239	VAL
1	B	246	ARG
1	B	265	ASN
1	B	291	GLN
1	B	295	PHE
1	B	296	ARG
1	B	350	ASN
1	B	356	ARG
1	B	369	GLN
1	B	376	GLU
1	B	421	GLN
1	B	437	LEU
1	B	491	ASP
1	B	496	LYS
1	B	514	ASN
1	B	524	LEU

Some sidechains can be flipped to improve hydrogen bonding and reduce clashes. There are no such sidechains identified.

5.3.3 RNA ⓘ

There are no RNA chains in this entry.

5.4 Non-standard residues in protein, DNA, RNA chains ⓘ

4 non-standard protein/DNA/RNA residues are modelled in this entry.

In the following table, the Counts columns list the number of bonds (or angles) for which Mogul statistics could be retrieved, the number of bonds (or angles) that are observed in the model and the number of bonds (or angles) that are defined in the chemical component dictionary. The Link column lists molecule types, if any, to which the group is linked. The Z score for a bond length (or angle) is the number of standard deviations the observed value is removed from the expected value. A bond length (or angle) with $|Z| > 2$ is considered an outlier worth inspection. RMSZ is the root-mean-square of all Z scores of the bond lengths (or angles).

Mol	Type	Chain	Res	Link	Bond lengths			Bond angles		
					Counts	RMSZ	# $ Z > 2$	Counts	RMSZ	# $ Z > 2$
1	SXE	A	203[A]	1	14,14,15	4.92	3 (21%)	16,18,20	1.80	3 (18%)
1	SXE	A	203[B]	1	14,14,15	4.94	3 (21%)	16,18,20	1.95	2 (12%)
1	SXE	B	203[A]	1	14,14,15	4.43	3 (21%)	16,18,20	1.91	2 (12%)
1	SXE	B	203[B]	1	14,14,15	4.43	4 (28%)	16,18,20	1.80	2 (12%)

In the following table, the Chirals column lists the number of chiral outliers, the number of chiral centers analysed, the number of these observed in the model and the number defined in the chemical component dictionary. Similar counts are reported in the Torsion and Rings columns. '-' means no outliers of that kind were identified.

Mol	Type	Chain	Res	Link	Chirals	Torsions	Rings
1	SXE	A	203[A]	1	-	0/15/17/19	0/0/0/0
1	SXE	A	203[B]	1	-	0/15/17/19	0/0/0/0
1	SXE	B	203[A]	1	-	0/15/17/19	0/0/0/0
1	SXE	B	203[B]	1	-	0/15/17/19	0/0/0/0

All (13) bond length outliers are listed below:

Mol	Chain	Res	Type	Atoms	Z	Observed(Å)	Ideal(Å)
1	A	203[B]	SXE	O-C	17.07	1.23	1.11
1	A	203[A]	SXE	O-C	16.99	1.23	1.11
1	B	203[A]	SXE	O-C	15.09	1.21	1.11
1	B	203[B]	SXE	O-C	15.08	1.21	1.11
1	A	203[A]	SXE	P1-N1	5.30	1.67	1.61
1	A	203[B]	SXE	P1-N1	5.27	1.67	1.61

Continued on next page...

Continued from previous page...

Mol	Chain	Res	Type	Atoms	Z	Observed(Å)	Ideal(Å)
1	B	203[B]	SXE	P1-N1	5.26	1.66	1.61
1	B	203[A]	SXE	P1-N1	5.25	1.66	1.61
1	A	203[B]	SXE	CA-C	3.26	1.54	1.48
1	A	203[A]	SXE	CA-C	3.19	1.54	1.48
1	B	203[A]	SXE	CA-C	2.44	1.52	1.48
1	B	203[B]	SXE	P1-O1	2.43	1.49	1.46
1	B	203[B]	SXE	CA-C	2.33	1.52	1.48

All (9) bond angle outliers are listed below:

Mol	Chain	Res	Type	Atoms	Z	Observed(°)	Ideal(°)
1	B	203[A]	SXE	C-CA-N	-6.93	106.91	113.83
1	A	203[B]	SXE	C-CA-N	-6.79	107.05	113.83
1	B	203[B]	SXE	C-CA-N	-6.31	107.52	113.83
1	A	203[A]	SXE	C-CA-N	-5.86	107.98	113.83
1	A	203[A]	SXE	CB-CA-N	-2.78	98.13	110.49
1	A	203[B]	SXE	CB-CA-N	-2.72	98.38	110.49
1	A	203[A]	SXE	P1-N1-C1	-2.42	119.67	124.75
1	B	203[A]	SXE	CB-CA-N	-2.41	99.75	110.49
1	B	203[B]	SXE	CB-CA-N	-2.09	101.19	110.49

There are no chirality outliers.

There are no torsion outliers.

There are no ring outliers.

5.5 Carbohydrates ⓘ

There are no carbohydrates in this entry.

5.6 Ligand geometry ⓘ

7 ligands are modelled in this entry.

In the following table, the Counts columns list the number of bonds (or angles) for which Mogul statistics could be retrieved, the number of bonds (or angles) that are observed in the model and the number of bonds (or angles) that are defined in the chemical component dictionary. The Link column lists molecule types, if any, to which the group is linked. The Z score for a bond length (or angle) is the number of standard deviations the observed value is removed from the expected value. A bond length (or angle) with $|Z| > 2$ is considered an outlier worth inspection. RMSZ is the root-mean-square of all Z scores of the bond lengths (or angles).

Mol	Type	Chain	Res	Link	Bond lengths			Bond angles		
					Counts	RMSZ	# Z > 2	Counts	RMSZ	# Z > 2
2	HI6	A	601	-	19,19,22	0.62	0	21,24,28	1.72	4 (19%)
2	HI6	B	601	-	19,19,22	0.57	0	21,24,28	1.23	2 (9%)
3	NAG	C	601	-	12,14,15	0.66	0	15,19,21	1.08	1 (6%)
3	NAG	C	701	1	12,14,15	0.53	0	15,19,21	1.48	2 (13%)
4	P6G	C	901	-	18,18,18	1.72	5 (27%)	17,17,17	2.10	8 (47%)
5	CO3	D	951	-	0,3,3	0.00	-	0,3,3	0.00	-
5	CO3	D	952	-	0,3,3	0.00	-	0,3,3	0.00	-

In the following table, the Chirals column lists the number of chiral outliers, the number of chiral centers analysed, the number of these observed in the model and the number defined in the chemical component dictionary. Similar counts are reported in the Torsion and Rings columns. '-' means no outliers of that kind were identified.

Mol	Type	Chain	Res	Link	Chirals	Torsions	Rings
2	HI6	A	601	-	-	0/10/10/13	0/2/2/2
2	HI6	B	601	-	-	0/10/10/13	0/2/2/2
3	NAG	C	601	-	-	0/6/23/26	0/1/1/1
3	NAG	C	701	1	1/1/5/7	0/6/23/26	0/1/1/1
4	P6G	C	901	-	-	0/16/16/16	0/0/0/0
5	CO3	D	951	-	-	0/0/0/0	0/0/0/0
5	CO3	D	952	-	-	0/0/0/0	0/0/0/0

All (5) bond length outliers are listed below:

Mol	Chain	Res	Type	Atoms	Z	Observed(Å)	Ideal(Å)
4	C	901	P6G	C17-C18	-2.78	1.34	1.49
4	C	901	P6G	C3-C2	-2.77	1.34	1.49
4	C	901	P6G	C15-C14	-2.74	1.34	1.48
4	C	901	P6G	C6-C5	-2.71	1.34	1.48
4	C	901	P6G	C9-C8	-2.68	1.34	1.48

All (17) bond angle outliers are listed below:

Mol	Chain	Res	Type	Atoms	Z	Observed(°)	Ideal(°)
2	A	601	HI6	C7-O2-C8	-6.05	102.38	114.96
2	B	601	HI6	O2-C7-N2	-4.53	102.42	110.62
3	C	701	NAG	O5-C5-C6	4.19	111.38	106.98
4	C	901	P6G	O7-C8-C9	3.42	125.97	110.47
4	C	901	P6G	O7-C6-C5	2.77	123.03	110.47
4	C	901	P6G	O13-C14-C15	2.73	122.85	110.47
4	C	901	P6G	O16-C15-C14	2.49	121.75	110.47

Continued on next page...

Continued from previous page...

Mol	Chain	Res	Type	Atoms	Z	Observed(°)	Ideal(°)
3	C	701	NAG	C3-C2-N2	-2.49	107.98	111.76
4	C	901	P6G	O10-C9-C8	2.48	121.71	110.47
4	C	901	P6G	C5-O4-C3	2.45	124.17	113.38
3	C	601	NAG	O5-C5-C6	2.35	109.45	106.98
2	A	601	HI6	C8-N3-C13	-2.17	115.70	118.85
2	A	601	HI6	O2-C7-N2	-2.10	106.83	110.62
2	B	601	HI6	C11-C14-N4	2.08	120.14	117.77
4	C	901	P6G	O4-C5-C6	2.04	119.74	110.47
4	C	901	P6G	O16-C17-C18	2.04	120.42	110.61
2	A	601	HI6	O2-C8-N3	2.02	114.27	110.62

All (1) chirality outliers are listed below:

Mol	Chain	Res	Type	Atom
3	C	701	NAG	C1

There are no torsion outliers.

There are no ring outliers.

5.7 Other polymers ⓘ

There are no such residues in this entry.

5.8 Polymer linkage issues

There are no chain breaks in this entry.

6 Fit of model and data ⓘ

6.1 Protein, DNA and RNA chains ⓘ

In the following table, the column labelled ‘#RSRZ> 2’ contains the number (and percentage) of RSRZ outliers, followed by percent RSRZ outliers for the chain as percentile scores relative to all X-ray entries and entries of similar resolution. The OWAB column contains the minimum, median, 95th percentile and maximum values of the occupancy-weighted average B-factor per residue. The column labelled ‘Q< 0.9’ lists the number of (and percentage) of residues with an average occupancy less than 0.9.

Mol	Chain	Analysed	<RSRZ>	#RSRZ>2	OWAB(Å ²)	Q<0.9
1	A	539/548 (98%)	-0.57	8 (1%) 70 75	29, 45, 83, 159	0
1	B	533/548 (97%)	-0.49	3 (0%) 86 90	29, 52, 85, 145	0
All	All	1072/1096 (97%)	-0.53	11 (1%) 79 83	29, 48, 84, 159	0

All (11) RSRZ outliers are listed below:

Mol	Chain	Res	Type	RSRZ
1	A	496	LYS	4.1
1	A	494	ASP	3.4
1	A	493	ARG	3.4
1	A	495	SER	3.0
1	A	542	ALA	2.6
1	A	543	THR	2.6
1	B	497	SER	2.5
1	A	545	THR	2.4
1	A	544	ALA	2.3
1	B	78	PRO	2.1
1	B	79	GLY	2.1

6.2 Non-standard residues in protein, DNA, RNA chains ⓘ

In the following table, the Atoms column lists the number of modelled atoms in the group and the number defined in the chemical component dictionary. LLDF column lists the quality of electron density of the group with respect to its neighbouring residues in protein, DNA or RNA chains. The B-factors column lists the minimum, median, 95th percentile and maximum values of B factors of atoms in the group. The column labelled ‘Q< 0.9’ lists the number of atoms with occupancy less than 0.9.

Mol	Type	Chain	Res	Atoms	RSR	LLDF	B-factors(Å ²)	Q<0.9
1	SXE	A	203[A]	15/16	0.22	1.35	32,39,55,58	15

Continued on next page...

Continued from previous page...

Mol	Type	Chain	Res	Atoms	RSR	LLDF	B-factors(\AA^2)	Q<0.9
1	SXE	A	203[B]	15/16	0.22	1.26	30,38,54,58	15
1	SXE	B	203[A]	15/16	0.16	0.79	37,54,64,67	15
1	SXE	B	203[B]	15/16	0.16	0.78	37,52,64,66	15

6.3 Carbohydrates [i](#)

There are no carbohydrates in this entry.

6.4 Ligands [i](#)

In the following table, the Atoms column lists the number of modelled atoms in the group and the number defined in the chemical component dictionary. LLDF column lists the quality of electron density of the group with respect to its neighbouring residues in protein, DNA or RNA chains. The B-factors column lists the minimum, median, 95th percentile and maximum values of B factors of atoms in the group. The column labelled 'Q< 0.9' lists the number of atoms with occupancy less than 0.9.

Mol	Type	Chain	Res	Atoms	RSR	LLDF	B-factors(\AA^2)	Q<0.9
3	NAG	C	701	14/15	0.34	7.60	106,119,126,126	0
5	CO3	D	951	4/4	0.18	6.67	78,82,82,86	0
5	CO3	D	952	4/4	0.21	6.43	87,87,94,98	0
4	P6G	C	901	19/19	0.18	5.05	46,81,100,100	0
3	NAG	C	601	14/15	0.28	4.23	87,110,117,118	0
2	HI6	A	601	18/21	0.18	3.66	56,71,88,89	0
2	HI6	B	601	18/21	0.18	3.49	78,93,106,108	0

6.5 Other polymers [i](#)

There are no such residues in this entry.