



# wwPDB X-ray Structure Validation Summary Report

Feb 28, 2014 – 12:26 PM GMT

PDB ID : 2WZS  
Title : STRUCTURE OF THE FAMILY GH92 INVERTING MANNOSIDASE  
BT3990 FROM BACTEROIDES THETA IOTAOMICRON VPI-5482 IN  
COMPLEX WITH MANNOIMIDAZOLE  
Authors : Zhu, Y.; Suits, M.D.L.; Thompson, A.; Chavan, S.; Dinev, Z.; Dumon,  
C.; Smith, N.; Moremen, K.W.; Xiang, Y.; Siriwardena, A.; Williams, S.J.;  
Gilbert, H.J.; Davies, G.J.  
Deposited on : 2009-12-02  
Resolution : 2.25 Å(reported)

This is a wwPDB validation summary report for a publicly released PDB entry.  
We welcome your comments at [validation@mail.wwpdb.org](mailto:validation@mail.wwpdb.org)  
A user guide is available at <http://wwpdb.org/ValidationPDFNotes.html>

---

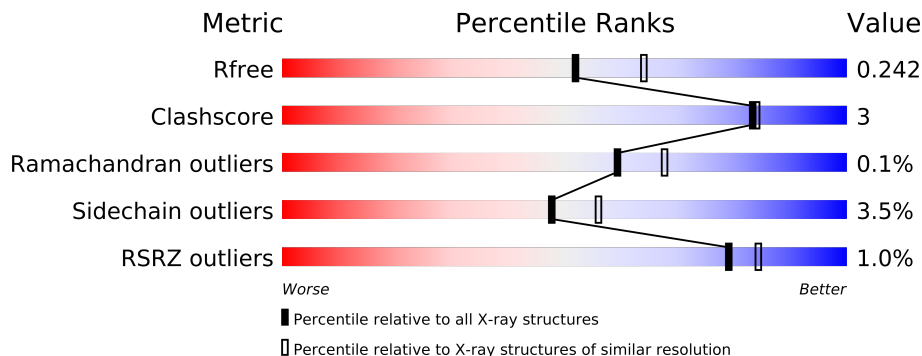
The following versions of software and data (see [references](#)) were used in the production of this report:

MolProbity : 4.02b-467  
Mogul : 1.15 2013  
Xtriage (Phenix) : dev-1323  
EDS : stable22639  
Percentile statistics : 21963  
Refmac : 5.8.0049  
CCP4 : 6.3.0 (Settle)  
Ideal geometry (proteins) : Engh & Huber (2001)  
Ideal geometry (DNA, RNA) : Parkinson et. al. (1996)  
Validation Pipeline (wwPDB-VP) : stable22683

# 1 Overall quality at a glance

The reported resolution of this entry is 2.25 Å.

Percentile scores (ranging between 0-100) for global validation metrics of the entry are shown in the following graphic. The table shows the number of entries on which the scores are based.



Metric	Whole archive (#Entries)	Similar resolution (#Entries, resolution range(Å))
$R_{free}$	66092	1108 (2.28-2.24)
Clashscore	79885	1326 (2.28-2.24)
Ramachandran outliers	78287	1291 (2.28-2.24)
Sidechain outliers	78261	1291 (2.28-2.24)
RSRZ outliers	66119	1110 (2.28-2.24)

The table below summarises the geometric issues observed across the polymeric chains and their fit to the electron density. The red, orange, yellow and green segments on the lower bar indicate the fraction of residues that contain outliers for  $\geq 3$ , 2, 1 and 0 types of geometric quality criteria. The upper red bar (where present) indicates the fraction of residues that have poor fit to the electron density.

Mol	Chain	Length	Quality of chain
1	A	738	
1	B	738	
1	C	738	
1	D	738	
1	E	738	
1	F	738	
1	G	738	
1	H	738	

The following table lists non-polymeric compounds that are outliers for geometric or electron-density-fit criteria:

Mol	Type	Chain	Res	Geometry	Electron density
2	CA	H	800	-	X

Continued on next page...

*Continued from previous page...*

Mol	Type	Chain	Res	Geometry	Electron density
3	MVL	H	801	-	X
4	GOL	A	802	-	X
4	GOL	A	803	-	X
4	GOL	A	804	-	X
4	GOL	B	803	-	X
4	GOL	B	804	-	X
4	GOL	B	805	-	X
4	GOL	C	802	-	X
4	GOL	C	803	-	X
4	GOL	C	804	-	X
4	GOL	C	805	-	X
4	GOL	D	802	-	X
4	GOL	D	803	-	X
4	GOL	D	804	-	X
4	GOL	E	803	-	X
4	GOL	E	804	-	X
4	GOL	F	802	-	X

## 2 Entry composition

There are 5 unique types of molecules in this entry. The entry contains 49858 atoms, of which 0 are hydrogen and 0 are deuterium.

In the tables below, the ZeroOcc column contains the number of atoms modelled with zero occupancy, the AltConf column contains the number of residues with at least one atom in alternate conformation and the Trace column contains the number of residues modelled with at most 2 atoms.

- Molecule 1 is a protein called PUTATIVE ALPHA-1,2-MANNOSIDASE.

Mol	Chain	Residues	Atoms					ZeroOcc	AltConf	Trace
1	A	736	Total	C	N	O	S	0	4	0
			5982	3837	985	1126	34			
1	B	736	Total	C	N	O	S	0	2	0
			5980	3835	984	1127	34			
1	C	736	Total	C	N	O	S	0	0	0
			5965	3824	983	1125	33			
1	D	738	Total	C	N	O	S	0	5	0
			6015	3862	987	1133	33			
1	E	736	Total	C	N	O	S	0	0	0
			5950	3816	982	1119	33			
1	F	735	Total	C	N	O	S	0	2	0
			5955	3820	981	1120	34			
1	G	736	Total	C	N	O	S	0	0	0
			5943	3810	977	1123	33			
1	H	736	Total	C	N	O	S	0	1	0
			5966	3825	982	1125	34			

- Molecule 2 is CALCIUM ION (three-letter code: CA) (formula: Ca).

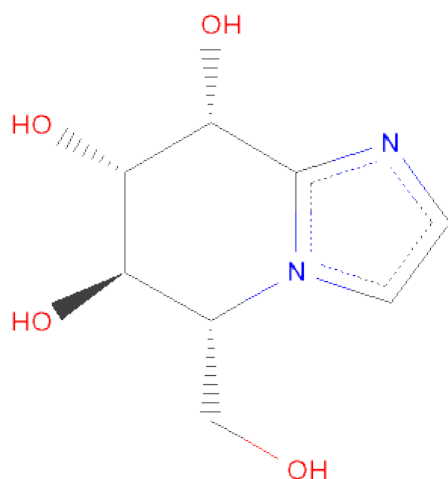
Mol	Chain	Residues	Atoms		ZeroOcc	AltConf
2	G	1	Total	Ca	0	0
			1	1		
2	D	1	Total	Ca	0	0
			1	1		
2	E	1	Total	Ca	0	0
			1	1		
2	H	1	Total	Ca	0	0
			1	1		
2	B	1	Total	Ca	0	0
			1	1		
2	C	1	Total	Ca	0	0
			1	1		

*Continued on next page...*

Continued from previous page...

Mol	Chain	Residues	Atoms		ZeroOcc	AltConf
2	A	1	Total	Ca	0	0
			1	1		
2	F	1	Total	Ca	0	0
			1	1		

- Molecule 3 is (5R,6R,7S,8R)-6,7,8-TRIHIDROXY-5-(HYDROXYMETHYL)-5,6,7,8-TE TRAHYDRO-1H-IMIDAZO[1,2-A]PYRIDIN-4-IUM (three-letter code: MVL) (formula:  $C_8H_{12}N_2O_4$ ).



Mol	Chain	Residues	Atoms				ZeroOcc	AltConf
3	A	1	Total	C	N	O	0	0
			14	8	2	4		
3	B	1	Total	C	N	O	0	0
			14	8	2	4		
3	C	1	Total	C	N	O	0	0
			14	8	2	4		
3	D	1	Total	C	N	O	0	0
			14	8	2	4		
3	E	1	Total	C	N	O	0	0
			14	8	2	4		
3	F	1	Total	C	N	O	0	0
			14	8	2	4		
3	G	1	Total	C	N	O	0	0
			14	8	2	4		
3	H	1	Total	C	N	O	0	0
			14	8	2	4		

- Molecule 4 is GLYCEROL (three-letter code: GOL) (formula:  $C_3H_8O_3$ ).



Mol	Chain	Residues	Atoms			ZeroOcc	AltConf
4	A	1	Total	C	O	0	0
			6	3	3		
4	A	1	Total	C	O	0	0
			6	3	3		
4	A	1	Total	C	O	0	0
			6	3	3		
4	B	1	Total	C	O	0	0
			6	3	3		
4	B	1	Total	C	O	0	0
			6	3	3		
4	B	1	Total	C	O	0	0
			6	3	3		
4	B	1	Total	C	O	0	0
			6	3	3		
4	C	1	Total	C	O	0	0
			6	3	3		
4	C	1	Total	C	O	0	0
			6	3	3		
4	C	1	Total	C	O	0	0
			6	3	3		
4	C	1	Total	C	O	0	0
			6	3	3		
4	D	1	Total	C	O	0	0
			6	3	3		
4	D	1	Total	C	O	0	0
			6	3	3		

*Continued on next page...*

*Continued from previous page...*

Mol	Chain	Residues	Atoms			ZeroOcc	AltConf
4	D	1	Total	C	O	0	0
			6	3	3		
4	D	1	Total	C	O	0	0
			6	3	3		
4	E	1	Total	C	O	0	0
			6	3	3		
4	E	1	Total	C	O	0	0
			6	3	3		
4	E	1	Total	C	O	0	0
			6	3	3		
4	F	1	Total	C	O	0	0
			6	3	3		

- Molecule 5 is water.

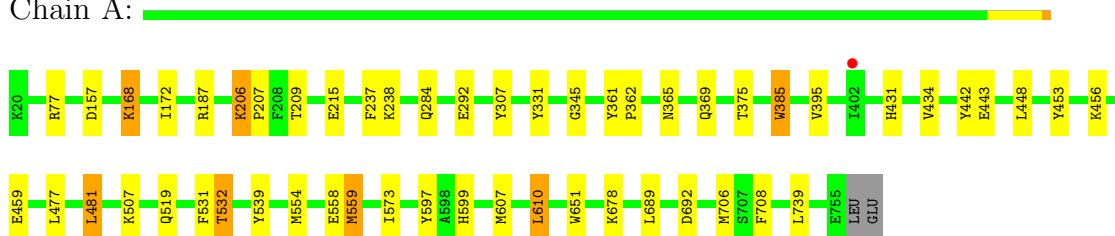
Mol	Chain	Residues	Atoms		ZeroOcc	AltConf
5	A	349	Total	O	0	0
			349	349		
5	B	320	Total	O	0	0
			320	320		
5	C	279	Total	O	0	0
			279	279		
5	D	323	Total	O	0	0
			323	323		
5	E	261	Total	O	0	0
			261	261		
5	F	179	Total	O	0	0
			179	179		
5	G	87	Total	O	0	0
			87	87		
5	H	70	Total	O	0	0
			70	70		

### 3 Residue-property plots

These plots are drawn for all protein, RNA and DNA chains in the entry. The first graphic for a chain summarises the proportions of errors displayed in the second graphic. The second graphic shows the sequence view annotated by issues in geometry and electron density. Residues are color-coded according to the number of geometric quality criteria for which they contain at least one outlier: green = 0, yellow = 1, orange = 2 and red = 3 or more. A red dot above a residue indicates a poor fit to the electron density ( $RSRZ > 2$ ). Stretches of 2 or more consecutive residues without any outlier are shown as a green connector. Residues present in the sample, but not in the model, are shown in grey.

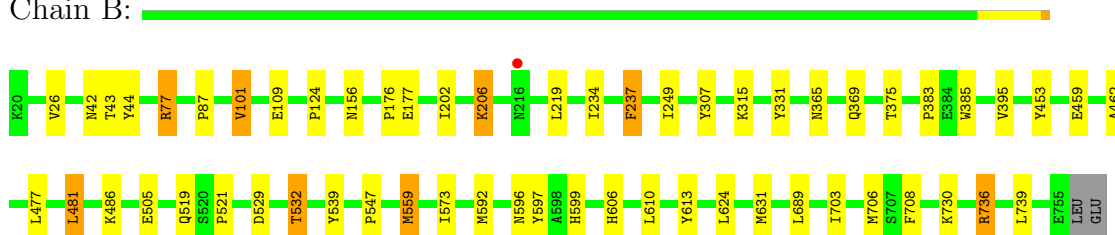
- Molecule 1: PUTATIVE ALPHA-1,2-MANNOSIDASE

Chain A:



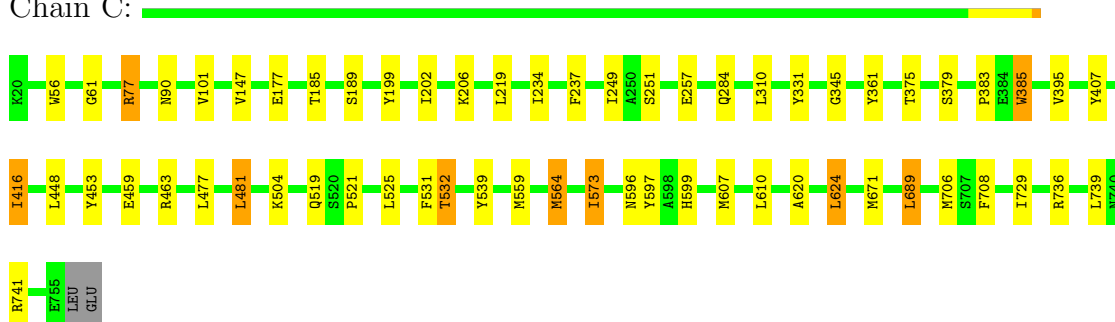
- Molecule 1: PUTATIVE ALPHA-1,2-MANNOSIDASE

Chain B:



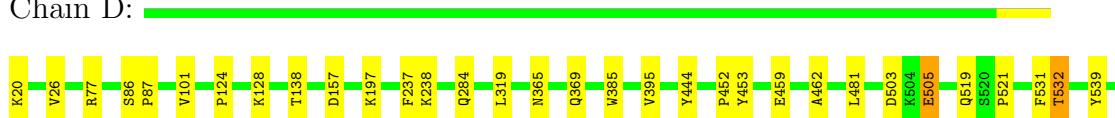
- Molecule 1: PUTATIVE ALPHA-1,2-MANNOSIDASE

Chain C:



- Molecule 1: PUTATIVE ALPHA-1,2-MANNOSIDASE

Chain D:

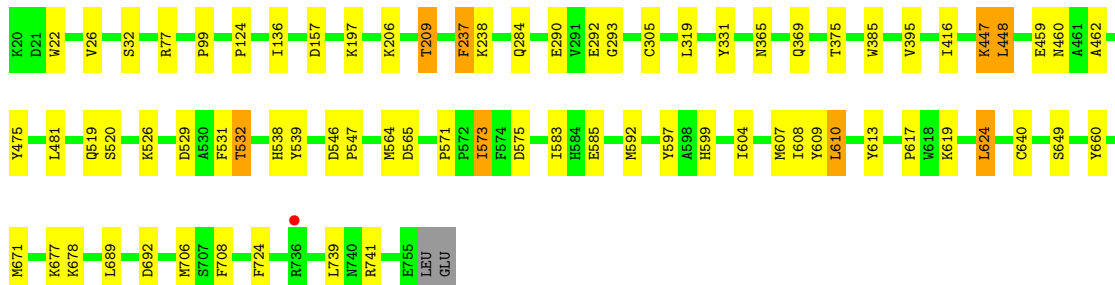






• Molecule 1: PUTATIVE ALPHA-1,2-MANNOSIDASE

Chain E:



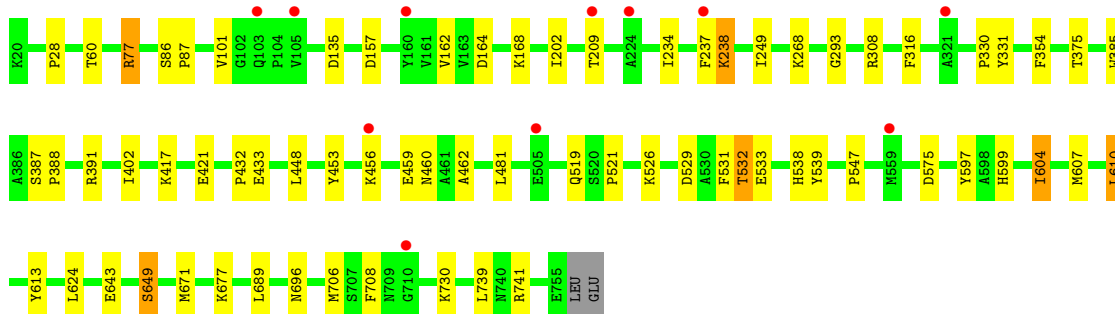
• Molecule 1: PUTATIVE ALPHA-1,2-MANNOSIDASE

Chain F:



• Molecule 1: PUTATIVE ALPHA-1,2-MANNOSIDASE

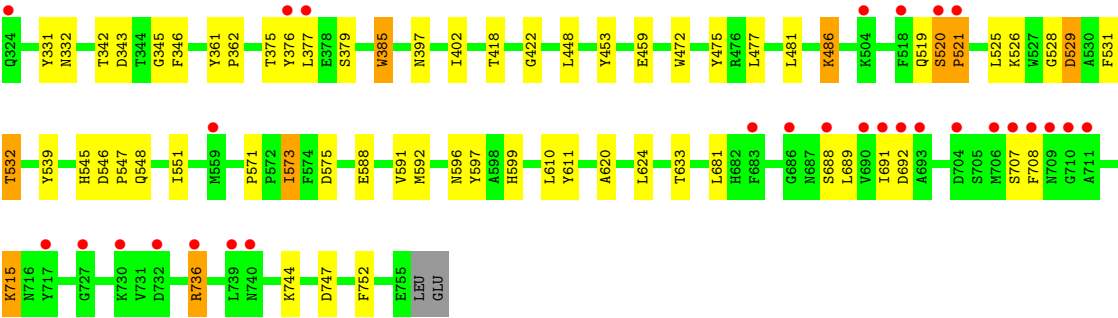
Chain G:



• Molecule 1: PUTATIVE ALPHA-1,2-MANNOSIDASE

Chain H:





## 4 Data and refinement statistics

Property	Value	Source
Space group	P 1 21 1	Depositor
Cell constants a, b, c, $\alpha$ , $\beta$ , $\gamma$	109.19Å 152.39Å 221.45Å 90.00° 94.21° 90.00°	Depositor
Resolution (Å)	218.22 – 2.25 45.40 – 2.25	Depositor EDS
% Data completeness (in resolution range)	100.0 (218.22-2.25) 100.0 (45.40-2.25)	Depositor EDS
$R_{merge}$	0.17	Depositor
$R_{sym}$	(Not available)	Depositor
$\langle I/\sigma(I) \rangle$ <sup>1</sup>	1.99 (at 2.24Å)	Xtriage
Refinement program	REFMAC 5.5.0109	Depositor
R, $R_{free}$	0.200 , 0.242 0.201 , 0.242	Depositor DCC
$R_{free}$ test set	17260 reflections (5.32%)	DCC
Wilson B-factor (Å <sup>2</sup> )	26.2	Xtriage
Anisotropy	0.328	Xtriage
Bulk solvent $k_{sol}$ (e/Å <sup>3</sup> ), $B_{sol}$ (Å <sup>2</sup> )	0.34 , 14.2	EDS
Estimated twinning fraction	No twinning to report.	Xtriage
L-test for twinning	$\langle  L  \rangle = 0.47$ , $\langle L^2 \rangle = 0.30$	Xtriage
Outliers	0 of 341577 reflections	Xtriage
$F_o, F_c$ correlation	0.93	EDS
Total number of atoms	49858	wwPDB-VP
Average B, all atoms (Å <sup>2</sup> )	23.0	wwPDB-VP

Xtriage's analysis on translational NCS is as follows: *The largest off-origin peak in the Patterson function is 10.58% of the height of the origin peak. No significant pseudotranslation is detected.*

<sup>1</sup>Intensities estimated from amplitudes.

## 5 Model quality

### 5.1 Standard geometry

Bond lengths and bond angles in the following residue types are not validated in this section: GOL, CA, MVL

The Z score for a bond length (or angle) is the number of standard deviations the observed value is removed from the expected value. A bond length (or angle) with  $|Z| > 5$  is considered an outlier worth inspection. RMSZ is the root-mean-square of all Z scores of the bond lengths (or angles).

Mol	Chain	Bond lengths		Bond angles	
		RMSZ	$\# Z  > 5$	RMSZ	$\# Z  > 5$
1	A	0.49	0/6175	0.58	0/8376
1	B	0.47	0/6167	0.57	0/8364
1	C	0.46	0/6146	0.57	0/8338
1	D	0.47	0/6213	0.57	0/8429
1	E	0.50	0/6131	0.58	0/8320
1	F	0.52	0/6142	0.58	0/8334
1	G	0.54	0/6124	0.57	1/8314 (0.0%)
1	H	0.56	0/6150	0.57	1/8344 (0.0%)
All	All	0.50	0/49248	0.57	2/66819 (0.0%)

Chiral center outliers are detected by calculating the chiral volume of a chiral center and verifying if the center is modelled as a planar moiety or with the opposite hand. A planarity outlier is detected by checking planarity of atoms in a peptide group, atoms in a mainchain group or atoms of a sidechain that are expected to be planar.

Mol	Chain	#Chirality outliers	#Planarity outliers
1	H	0	1

There are no bond length outliers.

All (2) bond angle outliers are listed below:

Mol	Chain	Res	Type	Atoms	Z	Observed(°)	Ideal(°)
1	G	164	ASP	CB-CG-OD1	5.45	123.21	118.30
1	H	689	LEU	CA-CB-CG	5.27	127.42	115.30

There are no chirality outliers.

All (1) planarity outliers are listed below:

Mol	Chain	Res	Type	Group
1	H	520	SER	Peptide

## 5.2 Close contacts ⓘ

In the following table, the Non-H and H(model) columns list the number of non-hydrogen atoms and hydrogen atoms in the chain respectively. The H(added) column lists the number of hydrogens added by MolProbity. The Clashes column lists the number of clashes within the asymmetric unit, and the number in parentheses is this value normalized per 1000 atoms of the molecule in the chain. The Symm-Clashes column gives symmetry related clashes, in the same way as for the Clashes column.

Mol	Chain	Non-H	H(model)	H(added)	Clashes	Symm-Clashes
1	A	5982	0	5660	27	0
1	B	5980	0	5658	39	0
1	C	5965	0	5632	32	0
1	D	6015	0	5693	21	0
1	E	5950	0	5611	42	0
1	F	5955	0	5622	36	0
1	G	5943	0	5584	34	0
1	H	5966	0	5630	51	0
2	A	1	0	0	0	0
2	B	1	0	0	0	0
2	C	1	0	0	0	0
2	D	1	0	0	0	0
2	E	1	0	0	0	0
2	F	1	0	0	0	0
2	G	1	0	0	0	0
2	H	1	0	0	0	0
3	A	14	0	10	1	0
3	B	14	0	10	0	0
3	C	14	0	10	0	0
3	D	14	0	10	1	0
3	E	14	0	10	0	0
3	F	14	0	10	1	0
3	G	14	0	10	1	0
3	H	14	0	10	0	0
4	A	18	0	24	0	0
4	B	24	0	32	10	0
4	C	24	0	32	0	0
4	D	24	0	32	1	0
4	E	18	0	24	2	0
4	F	6	0	8	0	0
5	A	349	0	0	1	0

*Continued on next page...*

*Continued from previous page...*

Mol	Chain	Non-H	H(model)	H(added)	Clashes	Symm-Clashes
5	B	320	0	0	4	0
5	C	279	0	0	1	0
5	D	323	0	0	5	0
5	E	261	0	0	6	0
5	F	179	0	0	4	0
5	G	87	0	0	0	0
5	H	70	0	0	3	0
All	All	49858	0	45322	284	0

Clashscore is defined as the number of clashes calculated for the entry per 1000 atoms (including hydrogens) of the entry. The overall clashscore for this entry is 3.

The worst 5 of 284 close contacts within the same asymmetric unit are listed below.

Atom-1	Atom-2	Distance(Å)	Clash(Å)
1:F:592[B]:MET:CE	1:F:592[B]:MET:HA	1.59	1.32
1:H:592[B]:MET:CE	1:H:592[B]:MET:HA	1.75	1.16
1:H:592[B]:MET:HE3	1:H:592[B]:MET:HA	1.35	1.06
1:F:592[B]:MET:HE3	1:F:592[B]:MET:HA	0.99	0.98
1:F:592[B]:MET:HE3	1:F:592[B]:MET:CA	1.96	0.93

There are no symmetry-related clashes.

## 5.3 Torsion angles

### 5.3.1 Protein backbone ⓘ

In the following table, the Percentiles column shows the percent Ramachandran outliers of the chain as a percentile score with respect to all X-ray entries followed by that with respect to entries of similar resolution. The Analysed column shows the number of residues for which the backbone conformation was analysed, and the total number of residues.

Mol	Chain	Analysed	Favoured	Allowed	Outliers	Percentiles	
1	A	738/738 (100%)	712 (96%)	26 (4%)	0	100	100
1	B	736/738 (100%)	708 (96%)	28 (4%)	0	100	100
1	C	734/738 (100%)	713 (97%)	21 (3%)	0	100	100
1	D	741/738 (100%)	715 (96%)	26 (4%)	0	100	100
1	E	734/738 (100%)	710 (97%)	23 (3%)	1 (0%)	59	68
1	F	735/738 (100%)	708 (96%)	27 (4%)	0	100	100

*Continued on next page...*

*Continued from previous page...*

Mol	Chain	Analysed	Favoured	Allowed	Outliers	Percentiles	
1	G	734/738 (100%)	699 (95%)	34 (5%)	1 (0%)	59	68
1	H	735/738 (100%)	699 (95%)	34 (5%)	2 (0%)	50	54
All	All	5887/5904 (100%)	5664 (96%)	219 (4%)	4 (0%)	59	68

All (4) Ramachandran outliers are listed below:

Mol	Chain	Res	Type
1	H	521	PRO
1	G	529	ASP
1	H	529	ASP
1	E	529	ASP

### 5.3.2 Protein sidechains ⓘ

In the following table, the Percentiles column shows the percent sidechain outliers of the chain as a percentile score with respect to all X-ray entries followed by that with respect to entries of similar resolution. The Analysed column shows the number of residues for which the sidechain conformation was analysed, and the total number of residues.

Mol	Chain	Analysed	Rotameric	Outliers	Percentiles	
1	A	637/637 (100%)	615 (96%)	22 (4%)	48	56
1	B	637/637 (100%)	615 (96%)	22 (4%)	48	56
1	C	634/637 (100%)	610 (96%)	24 (4%)	44	52
1	D	641/637 (101%)	620 (97%)	21 (3%)	50	59
1	E	630/637 (99%)	608 (96%)	22 (4%)	48	56
1	F	632/637 (99%)	612 (97%)	20 (3%)	51	60
1	G	629/637 (99%)	607 (96%)	22 (4%)	48	56
1	H	634/637 (100%)	605 (95%)	29 (5%)	37	41
All	All	5074/5096 (100%)	4892 (96%)	182 (4%)	48	54

5 of 182 residues with a non-rotameric sidechain are listed below:

Mol	Chain	Res	Type
1	D	689	LEU
1	E	520	SER
1	H	532	THR
1	D	730[A]	LYS
1	E	237	PHE

Some sidechains can be flipped to improve hydrogen bonding and reduce clashes. All (5) such sidechains are listed below:

Mol	Chain	Res	Type
1	E	713	HIS
1	F	74	ASN
1	G	548	GLN
1	G	740	ASN
1	H	398	ASN

### 5.3.3 RNA ⓘ

There are no RNA chains in this entry.

### 5.4 Non-standard residues in protein, DNA, RNA chains ⓘ

There are no non-standard protein/DNA/RNA residues in this entry.

### 5.5 Carbohydrates ⓘ

There are no carbohydrates in this entry.

### 5.6 Ligand geometry ⓘ

Of 35 ligands modelled in this entry, 8 are monoatomic - leaving 27 for Mogul analysis.

In the following table, the Counts columns list the number of bonds (or angles) for which Mogul statistics could be retrieved, the number of bonds (or angles) that are observed in the model and the number of bonds (or angles) that are defined in the chemical component dictionary. The Link column lists molecule types, if any, to which the group is linked. The Z score for a bond length (or angle) is the number of standard deviations the observed value is removed from the expected value. A bond length (or angle) with  $|Z| > 2$  is considered an outlier worth inspection. RMSZ is the root-mean-square of all Z scores of the bond lengths (or angles).

Mol	Type	Chain	Res	Link	Bond lengths			Bond angles		
					Counts	RMSZ	$\# Z  > 2$	Counts	RMSZ	$\# Z  > 2$
3	MVL	A	801	2	15,15,15	1.67	2 (13%)	18,22,22	1.86	3 (16%)
4	GOL	A	802	-	5,5,5	0.45	0	5,5,5	0.29	0
4	GOL	A	803	-	5,5,5	0.30	0	5,5,5	0.24	0
4	GOL	A	804	-	5,5,5	0.33	0	5,5,5	0.30	0
3	MVL	B	801	2	15,15,15	1.17	1 (6%)	18,22,22	1.99	4 (22%)
4	GOL	B	802	-	5,5,5	0.35	0	5,5,5	0.26	0
4	GOL	B	803	-	5,5,5	0.38	0	5,5,5	0.51	0



Mol	Type	Chain	Res	Link	Bond lengths			Bond angles		
					Counts	RMSZ	# Z  > 2	Counts	RMSZ	# Z  > 2
4	GOL	B	804	-	5,5,5	0.42	0	5,5,5	0.53	0
4	GOL	B	805	-	5,5,5	0.46	0	5,5,5	0.96	0
3	MVL	C	801	2	15,15,15	1.54	3 (20%)	18,22,22	1.93	5 (27%)
4	GOL	C	802	-	5,5,5	0.25	0	5,5,5	0.37	0
4	GOL	C	803	-	5,5,5	0.37	0	5,5,5	0.55	0
4	GOL	C	804	-	5,5,5	0.38	0	5,5,5	0.23	0
4	GOL	C	805	-	5,5,5	0.38	0	5,5,5	0.20	0
3	MVL	D	801	2	15,15,15	1.61	3 (20%)	18,22,22	1.75	3 (16%)
4	GOL	D	802	-	5,5,5	0.32	0	5,5,5	0.72	0
4	GOL	D	803	-	5,5,5	0.32	0	5,5,5	0.36	0
4	GOL	D	804	-	5,5,5	0.33	0	5,5,5	0.23	0
4	GOL	D	805	-	5,5,5	0.25	0	5,5,5	0.45	0
3	MVL	E	801	2	15,15,15	1.46	2 (13%)	18,22,22	2.00	5 (27%)
4	GOL	E	802	-	5,5,5	0.31	0	5,5,5	0.20	0
4	GOL	E	803	-	5,5,5	0.31	0	5,5,5	0.48	0
4	GOL	E	804	-	5,5,5	0.29	0	5,5,5	0.33	0
3	MVL	F	801	2	15,15,15	1.57	2 (13%)	18,22,22	1.93	3 (16%)
4	GOL	F	802	-	5,5,5	0.36	0	5,5,5	0.26	0
3	MVL	G	801	2	15,15,15	1.61	2 (13%)	18,22,22	2.07	5 (27%)
3	MVL	H	801	2	15,15,15	1.40	1 (6%)	18,22,22	1.95	4 (22%)

In the following table, the Chirals column lists the number of chiral outliers, the number of chiral centers analysed, the number of these observed in the model and the number defined in the chemical component dictionary. Similar counts are reported in the Torsion and Rings columns. '-' means no outliers of that kind were identified.

Mol	Type	Chain	Res	Link	Chirals	Torsions	Rings
3	MVL	A	801	2	-	0/2/22/22	0/0/2/2
4	GOL	A	802	-	-	0/4/4/4	0/0/0/0
4	GOL	A	803	-	-	0/4/4/4	0/0/0/0
4	GOL	A	804	-	-	0/4/4/4	0/0/0/0
3	MVL	B	801	2	-	0/2/22/22	0/0/2/2
4	GOL	B	802	-	-	0/4/4/4	0/0/0/0
4	GOL	B	803	-	-	0/4/4/4	0/0/0/0
4	GOL	B	804	-	-	0/4/4/4	0/0/0/0
4	GOL	B	805	-	-	0/4/4/4	0/0/0/0
3	MVL	C	801	2	-	0/2/22/22	0/0/2/2
4	GOL	C	802	-	-	0/4/4/4	0/0/0/0
4	GOL	C	803	-	-	0/4/4/4	0/0/0/0
4	GOL	C	804	-	-	0/4/4/4	0/0/0/0
4	GOL	C	805	-	-	0/4/4/4	0/0/0/0

Continued on next page...

*Continued from previous page...*

Mol	Type	Chain	Res	Link	Chirals	Torsions	Rings
3	MVL	D	801	2	-	0/2/22/22	0/0/2/2
4	GOL	D	802	-	-	0/4/4/4	0/0/0/0
4	GOL	D	803	-	-	0/4/4/4	0/0/0/0
4	GOL	D	804	-	-	0/4/4/4	0/0/0/0
4	GOL	D	805	-	-	0/4/4/4	0/0/0/0
3	MVL	E	801	2	-	0/2/22/22	0/0/2/2
4	GOL	E	802	-	-	0/4/4/4	0/0/0/0
4	GOL	E	803	-	-	0/4/4/4	0/0/0/0
4	GOL	E	804	-	-	0/4/4/4	0/0/0/0
3	MVL	F	801	2	-	0/2/22/22	0/0/2/2
4	GOL	F	802	-	-	0/4/4/4	0/0/0/0
3	MVL	G	801	2	-	0/2/22/22	0/0/2/2
3	MVL	H	801	2	-	0/2/22/22	0/0/2/2

The worst 5 of 16 bond length outliers are listed below:

Mol	Chain	Res	Type	Atoms	Z	Observed(Å)	Ideal(Å)
3	D	801	MVL	C8-N10	-5.04	1.34	1.39
3	A	801	MVL	C8-N10	-5.03	1.34	1.39
3	G	801	MVL	C8-N10	-4.96	1.34	1.39
3	F	801	MVL	C8-N10	-4.69	1.34	1.39
3	H	801	MVL	C8-N10	-4.51	1.34	1.39

The worst 5 of 32 bond angle outliers are listed below:

Mol	Chain	Res	Type	Atoms	Z	Observed(°)	Ideal(°)
3	B	801	MVL	C2-C1-N10	-5.54	122.36	127.97
3	G	801	MVL	C2-C1-N10	-4.96	122.95	127.97
3	F	801	MVL	C4-C3-C2	4.95	116.77	110.64
3	H	801	MVL	C2-C1-N10	-4.87	123.04	127.97
3	H	801	MVL	C4-C3-C2	4.79	116.56	110.64

There are no chirality outliers.

There are no torsion outliers.

There are no ring outliers.

## 5.7 Other polymers ⓘ

There are no such residues in this entry.

## 5.8 Polymer linkage issues

There are no chain breaks in this entry.

## 6 Fit of model and data ⓘ

### 6.1 Protein, DNA and RNA chains ⓘ

In the following table, the column labelled ‘#RSRZ > 2’ contains the number (and percentage) of RSRZ outliers, followed by percent RSRZ outliers for the chain as percentile scores relative to all X-ray entries and entries of similar resolution. The OWAB column contains the minimum, median, 95<sup>th</sup> percentile and maximum values of the occupancy-weighted average B-factor per residue. The column labelled ‘Q < 0.9’ lists the number of (and percentage) of residues with an average occupancy less than 0.9.

Mol	Chain	Analysed	<RSRZ>	#RSRZ>2	OWAB(Å <sup>2</sup> )	Q<0.9
1	A	736/738 (99%)	-0.24	1 (0%) 93 96	14, 22, 33, 41	0
1	B	736/738 (99%)	-0.27	1 (0%) 93 96	13, 21, 32, 39	0
1	C	736/738 (99%)	-0.32	0 100 100	13, 22, 33, 41	0
1	D	738/738 (100%)	-0.27	0 100 100	13, 21, 32, 50	0
1	E	736/738 (99%)	-0.28	1 (0%) 93 96	15, 23, 34, 43	0
1	F	735/738 (99%)	-0.16	8 (1%) 77 83	15, 24, 35, 41	0
1	G	736/738 (99%)	-0.11	11 (1%) 70 76	17, 24, 35, 49	0
1	H	736/738 (99%)	0.14	35 (4%) 29 33	17, 25, 35, 47	0
All	All	5889/5904 (99%)	-0.19	57 (0%) 79 84	13, 23, 34, 50	0

The worst 5 of 57 RSRZ outliers are listed below:

Mol	Chain	Res	Type	RSRZ
1	H	710	GLY	4.9
1	H	321	ALA	4.4
1	H	739	LEU	3.5
1	H	520	SER	3.2
1	H	740	ASN	3.1

### 6.2 Non-standard residues in protein, DNA, RNA chains ⓘ

There are no non-standard protein/DNA/RNA residues in this entry.

### 6.3 Carbohydrates ⓘ

There are no carbohydrates in this entry.

## 6.4 Ligands

In the following table, the Atoms column lists the number of modelled atoms in the group and the number defined in the chemical component dictionary. LLDF column lists the quality of electron density of the group with respect to its neighbouring residues in protein, DNA or RNA chains. The B-factors column lists the minimum, median, 95<sup>th</sup> percentile and maximum values of B factors of atoms in the group. The column labelled 'Q< 0.9' lists the number of atoms with occupancy less than 0.9.

Mol	Type	Chain	Res	Atoms	RSR	LLDF	B-factors(Å <sup>2</sup> )	Q<0.9
4	GOL	D	803	6/6	0.20	15.97	49,50,51,52	0
4	GOL	E	804	6/6	0.31	11.85	40,41,42,44	0
4	GOL	D	802	6/6	0.19	10.38	40,41,41,43	0
4	GOL	C	803	6/6	0.20	8.53	51,51,51,52	0
4	GOL	B	803	6/6	0.18	6.30	44,45,45,47	0
4	GOL	F	802	6/6	0.15	6.15	53,53,54,54	0
4	GOL	C	804	6/6	0.19	5.72	64,64,64,65	0
4	GOL	A	804	6/6	0.18	5.07	45,45,46,47	0
4	GOL	D	804	6/6	0.16	5.05	38,40,40,41	0
4	GOL	A	802	6/6	0.25	4.73	52,53,53,54	0
3	MVL	H	801	14/14	0.17	4.18	33,34,34,36	0
4	GOL	A	803	6/6	0.20	4.17	56,57,57,57	0
4	GOL	B	804	6/6	0.16	3.45	37,39,39,40	0
4	GOL	E	803	6/6	0.17	3.36	48,48,49,49	0
4	GOL	C	802	6/6	0.16	3.28	36,37,37,38	0
4	GOL	C	805	6/6	0.13	3.01	38,39,40,40	0
4	GOL	B	805	6/6	0.22	2.79	29,31,32,34	0
2	CA	H	800	1/1	0.16	2.22	33,33,33,33	0
4	GOL	E	802	6/6	0.17	1.79	49,50,51,51	0
2	CA	D	800	1/1	0.17	1.70	17,17,17,17	0
4	GOL	B	802	6/6	0.14	1.37	39,40,41,41	0
2	CA	G	800	1/1	0.13	1.17	28,28,28,28	0
2	CA	B	800	1/1	0.18	0.72	17,17,17,17	0
3	MVL	G	801	14/14	0.11	0.40	27,31,32,33	0
3	MVL	B	801	14/14	0.16	0.33	9,14,15,16	0
2	CA	C	800	1/1	0.13	0.02	22,22,22,22	0
3	MVL	F	801	14/14	0.10	-0.09	21,25,29,29	0
3	MVL	C	801	14/14	0.11	-0.17	17,19,21,22	0
3	MVL	D	801	14/14	0.12	-0.34	14,17,18,20	0
2	CA	F	800	1/1	0.10	-0.46	23,23,23,23	0
3	MVL	E	801	14/14	0.12	-0.66	13,15,17,18	0
2	CA	A	800	1/1	0.12	-0.86	20,20,20,20	0
3	MVL	A	801	14/14	0.10	-1.11	12,15,16,17	0
2	CA	E	800	1/1	0.10	-1.51	18,18,18,18	0

*Continued on next page...*

*Continued from previous page...*

Mol	Type	Chain	Res	Atoms	RSR	LLDF	B-factors( $\text{\AA}^2$ )	Q<0.9
4	GOL	D	805	6/6	0.08	-3.39	32,33,34,34	0

## 6.5 Other polymers ⓘ

There are no such residues in this entry.