



Full wwPDB X-ray Structure Validation Report ⓘ

Feb 28, 2014 – 02:55 AM GMT

PDB ID : 2X0Y
Title : SCREENING-BASED DISCOVERY OF DRUG-LIKE O-GLCNACASE INHIBITOR SCAFFOLDS
Authors : Dorfmueller, H.C.; Van Aalten, D.M.F.
Deposited on : 2009-12-18
Resolution : 2.25 Å(reported)

This is a full wwPDB validation report for a publicly released PDB entry.
We welcome your comments at validation@mail.wwpdb.org
A user guide is available at <http://wwpdb.org/ValidationPDFNotes.html>

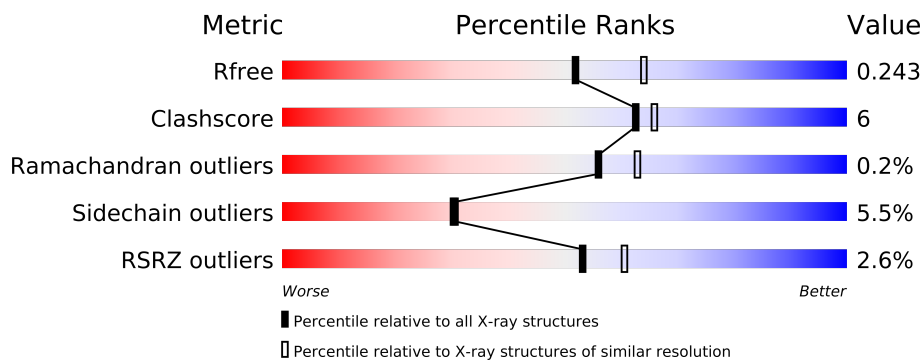
The following versions of software and data (see [references](#)) were used in the production of this report:

MolProbity : 4.02b-467
Mogul : 1.15 2013
Xtriage (Phenix) : dev-1323
EDS : stable22639
Percentile statistics : 21963
Refmac : 5.8.0049
CCP4 : 6.3.0 (Settle)
Ideal geometry (proteins) : Engh & Huber (2001)
Ideal geometry (DNA, RNA) : Parkinson et. al. (1996)
Validation Pipeline (wwPDB-VP) : stable22683

1 Overall quality at a glance



The reported resolution of this entry is 2.25 Å.

Percentile scores (ranging between 0-100) for global validation metrics of the entry are shown in the following graphic. The table shows the number of entries on which the scores are based.



Metric	Whole archive (#Entries)	Similar resolution (#Entries, resolution range(Å))
R_{free}	66092	1108 (2.28-2.24)
Clashscore	79885	1326 (2.28-2.24)
Ramachandran outliers	78287	1291 (2.28-2.24)
Sidechain outliers	78261	1291 (2.28-2.24)
RSRZ outliers	66119	1110 (2.28-2.24)

The table below summarises the geometric issues observed across the polymeric chains and their fit to the electron density. The red, orange, yellow and green segments on the lower bar indicate the fraction of residues that contain outliers for ≥ 3 , 2, 1 and 0 types of geometric quality criteria. The upper red bar (where present) indicates the fraction of residues that have poor fit to the electron density.

Mol	Chain	Length	Quality of chain
1	A	594	
1	B	594	

2 Entry composition i

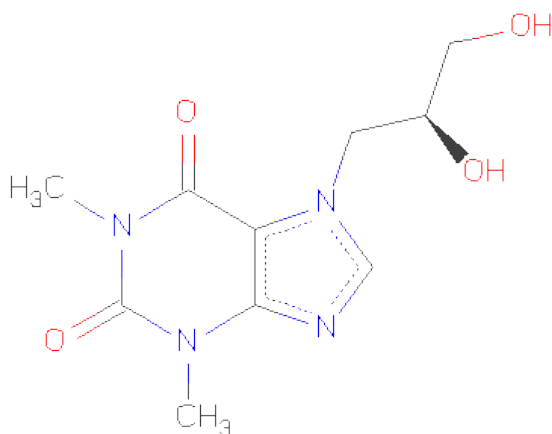
There are 3 unique types of molecules in this entry. The entry contains 10123 atoms, of which 0 are hydrogen and 0 are deuterium.

In the tables below, the ZeroOcc column contains the number of atoms modelled with zero occupancy, the AltConf column contains the number of residues with at least one atom in alternate conformation and the Trace column contains the number of residues modelled with at most 2 atoms.

- Molecule 1 is a protein called O-GLCNACASE NAGJ.

Mol	Chain	Residues	Atoms					ZeroOcc	AltConf	Trace
1	A	584	Total	C	N	O	S	0	1	0
			4633	2915	759	942	17			
1	B	585	Total	C	N	O	S	0	0	0
			4629	2913	758	941	17			

- Molecule 2 is 7-[(2S)-2,3-DIHYDROXYPROPYL]-1,3-DIMETHYL-3,7-DIHYDRO-1H-PURINE-2,6-DIONE (three-letter code: X0T) (formula: C₁₀H₁₄N₄O₄).



Mol	Chain	Residues	Atoms				ZeroOcc	AltConf
2	A	1	Total	C	N	O	0	0
			18	10	4	4		
2	B	1	Total	C	N	O	0	0
			18	10	4	4		

- Molecule 3 is water.

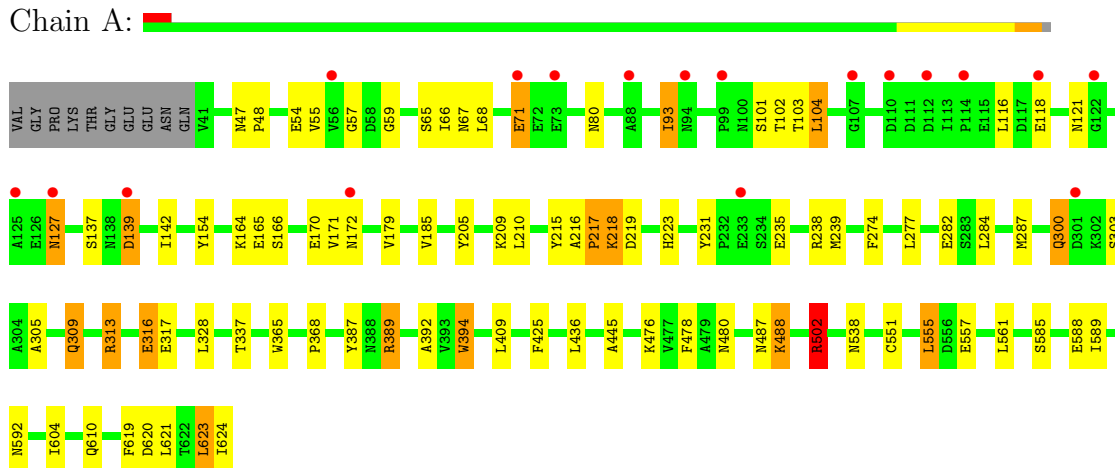
Mol	Chain	Residues	Atoms		ZeroOcc	AltConf
3	A	392	Total 392	O 392	0	0
3	B	433	Total 433	O 433	0	0

3 Residue-property plots

These plots are drawn for all protein, RNA and DNA chains in the entry. The first graphic for a chain summarises the proportions of errors displayed in the second graphic. The second graphic shows the sequence view annotated by issues in geometry and electron density. Residues are color-coded according to the number of geometric quality criteria for which they contain at least one outlier: green = 0, yellow = 1, orange = 2 and red = 3 or more. A red dot above a residue indicates a poor fit to the electron density ($RSRZ > 2$). Stretches of 2 or more consecutive residues without any outlier are shown as a green connector. Residues present in the sample, but not in the model, are shown in grey.

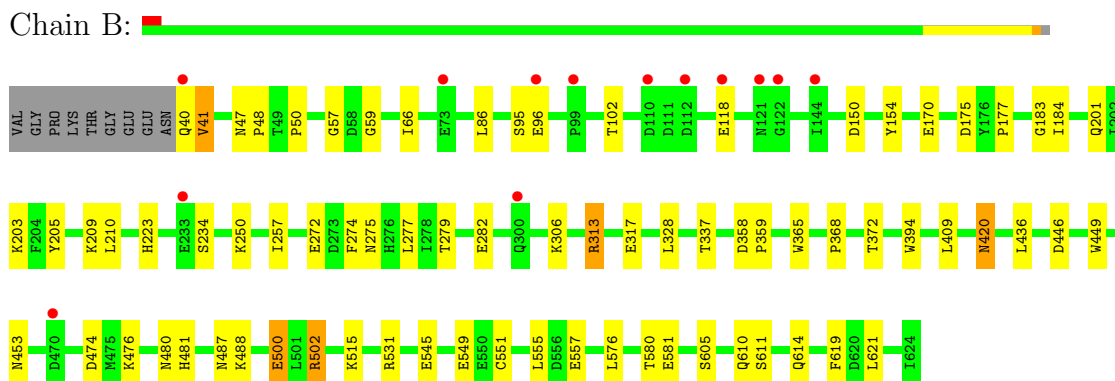
• Molecule 1: O-GLCNACASE NAGJ

Chain A:



• Molecule 1: O-GLCNACASE NAGJ

Chain B:



4 Data and refinement statistics

Property	Value	Source
Space group	I 21 21 21	Depositor
Cell constants a, b, c, α , β , γ	130.41Å 148.55Å 151.97Å 90.00° 90.00° 90.00°	Depositor
Resolution (Å)	19.88 – 2.25 19.88 – 2.25	Depositor EDS
% Data completeness (in resolution range)	99.9 (19.88-2.25) 99.9 (19.88-2.25)	Depositor EDS
R_{merge}	0.11	Depositor
R_{sym}	(Not available)	Depositor
$\langle I/\sigma(I) \rangle$ ¹	3.08 (at 2.26Å)	Xtriage
Refinement program	REFMAC 5.5.0088	Depositor
R, R_{free}	0.203 , 0.246 0.196 , 0.243	Depositor DCC
R_{free} test set	1400 reflections (2.04%)	DCC
Wilson B-factor (Å ²)	26.3	Xtriage
Anisotropy	0.046	Xtriage
Bulk solvent k_{sol} (e/Å ³), B_{sol} (Å ²)	0.35 , 22.6	EDS
Estimated twinning fraction	0.007 for -h,-l,-k	Xtriage
L-test for twinning	$\langle L \rangle = 0.50$, $\langle L^2 \rangle = 0.33$	Xtriage
Outliers	0 of 69865 reflections	Xtriage
F_o, F_c correlation	0.94	EDS
Total number of atoms	10123	wwPDB-VP
Average B, all atoms (Å ²)	28.0	wwPDB-VP

Xtriage's analysis on translational NCS is as follows: *The largest off-origin peak in the Patterson function is 3.53% of the height of the origin peak. No significant pseudotranslation is detected.*

¹Intensities estimated from amplitudes.

5 Model quality i

5.1 Standard geometry i

Bond lengths and bond angles in the following residue types are not validated in this section: X0T

The Z score for a bond length (or angle) is the number of standard deviations the observed value is removed from the expected value. A bond length (or angle) with $|Z| > 5$ is considered an outlier worth inspection. RMSZ is the root-mean-square of all Z scores of the bond lengths (or angles).

Mol	Chain	Bond lengths		Bond angles	
		RMSZ	$\# Z > 5$	RMSZ	$\# Z > 5$
1	A	0.54	0/4732	0.60	1/6425 (0.0%)
1	B	0.55	0/4725	0.60	2/6415 (0.0%)
All	All	0.55	0/9457	0.60	3/12840 (0.0%)

There are no bond length outliers.

All (3) bond angle outliers are listed below:

Mol	Chain	Res	Type	Atoms	Z	Observed(°)	Ideal(°)
1	B	502	ARG	NE-CZ-NH1	7.59	124.09	120.30
1	B	502	ARG	NE-CZ-NH2	-6.95	116.83	120.30
1	A	502	ARG	NE-CZ-NH1	5.24	122.92	120.30

There are no chirality outliers.

There are no planarity outliers.

5.2 Close contacts i

In the following table, the Non-H and H(model) columns list the number of non-hydrogen atoms and hydrogen atoms in the chain respectively. The H(added) column lists the number of hydrogens added by MolProbity. The Clashes column lists the number of clashes within the asymmetric unit, and the number in parentheses is this value normalized per 1000 atoms of the molecule in the chain. The Symm-Clashes column gives symmetry related clashes, in the same way as for the Clashes column.

Mol	Chain	Non-H	H(model)	H(added)	Clashes	Symm-Clashes
1	A	4633	0	4421	64	0
1	B	4629	0	4420	37	0
2	A	18	0	14	0	0
2	B	18	0	14	0	0

Continued on next page...

Continued from previous page...

Mol	Chain	Non-H	H(model)	H(added)	Clashes	Symm-Clashes
3	A	392	0	0	5	0
3	B	433	0	0	5	0
All	All	10123	0	8869	101	0

Clashscore is defined as the number of clashes calculated for the entry per 1000 atoms (including hydrogens) of the entry. The overall clashscore for this entry is 6.

All (101) close contacts within the same asymmetric unit are listed below.

Atom-1	Atom-2	Distance(Å)	Clash(Å)
1:A:121:ASN:HB3	3:A:2046:HOH:O	1.53	1.04
1:A:127:ASN:H	1:A:127:ASN:HD22	1.10	1.00
1:A:238:ARG:HH21	1:A:239:MET:HE2	1.26	0.96
1:A:238:ARG:HH21	1:A:239:MET:CE	1.84	0.89
1:B:47:ASN:HD21	1:B:446:ASP:HB2	1.40	0.87
1:A:309:GLN:HA	1:A:309:GLN:HE21	1.42	0.84
1:A:305:ALA:O	1:A:309:GLN:HG2	1.80	0.82
1:A:502:ARG:O	1:A:502:ARG:HD3	1.84	0.78
1:B:453:ASN:HB3	3:B:2284:HOH:O	1.86	0.75
1:B:502:ARG:HD3	1:B:502:ARG:O	1.87	0.75
1:A:127:ASN:H	1:A:127:ASN:ND2	1.86	0.72
1:A:623:LEU:O	1:A:624:ILE:HB	1.92	0.70
1:A:303:SER:HB3	3:A:2156:HOH:O	1.92	0.69
1:B:313:ARG:HD3	1:B:317:GLU:OE2	1.98	0.64
1:A:238:ARG:NH2	1:A:239:MET:CE	2.60	0.64
1:B:41:VAL:HG13	1:B:59:GLY:HA3	1.79	0.63
1:A:235:GLU:OE2	1:A:238:ARG:NH1	2.32	0.62
1:B:47:ASN:ND2	1:B:446:ASP:HB2	2.13	0.61
1:A:59:GLY:H	1:A:170:GLU:HG2	1.64	0.61
1:A:274:PHE:CZ	1:A:313:ARG:HD2	2.35	0.60
1:A:387:TYR:O	1:A:389:ARG:HG3	2.01	0.60
1:A:316:GLU:HG2	3:A:2164:HOH:O	2.03	0.58
1:B:275:ASN:O	1:B:279:THR:HG23	2.03	0.58
1:A:387:TYR:HB3	1:A:389:ARG:HD2	1.85	0.57
1:A:66:ILE:HG22	1:A:102:THR:HB	1.86	0.57
1:A:337:THR:HB	1:A:368:PRO:HA	1.87	0.55
1:A:48:PRO:HD2	1:A:209:LYS:HD2	1.88	0.55
1:B:611:SER:HA	1:B:614:GLN:HE21	1.72	0.55
1:A:47:ASN:OD1	3:A:2007:HOH:O	2.18	0.55
1:A:436:LEU:HD11	1:A:551:CYS:HB3	1.89	0.54
1:A:137:SER:O	1:A:170:GLU:HB2	2.07	0.53
1:B:500:GLU:CD	1:B:500:GLU:H	2.10	0.53
1:B:337:THR:HB	1:B:368:PRO:HA	1.90	0.53

Continued on next page...

Continued from previous page...

Atom-1	Atom-2	Distance(Å)	Clash(Å)
1:A:238:ARG:NH2	1:A:239:MET:HE2	2.10	0.53
1:A:118:GLU:O	1:A:121:ASN:ND2	2.42	0.53
1:B:177:PRO:HB3	1:B:449:TRP:CE3	2.45	0.52
1:A:127:ASN:N	1:A:127:ASN:HD22	1.84	0.52
1:B:306:LYS:HE2	3:B:2168:HOH:O	2.10	0.51
1:B:576:LEU:HD23	1:B:621:LEU:HD11	1.92	0.51
1:B:150:ASP:OD1	1:B:250:LYS:HD2	2.09	0.51
1:A:67[C]:ASN:HB2	1:A:103:THR:HG23	1.91	0.51
1:A:215:TYR:CE2	1:A:239:MET:HE1	2.46	0.51
1:A:284:LEU:HA	1:A:287:MET:HE3	1.93	0.50
1:A:104:LEU:HD13	1:A:142:ILE:HB	1.93	0.50
1:A:313:ARG:HD3	1:A:317:GLU:OE2	2.11	0.49
1:B:581:GLU:H	1:B:581:GLU:CD	2.15	0.49
1:A:502:ARG:C	1:A:502:ARG:HD3	2.25	0.49
1:A:619:PHE:HE2	1:A:621:LEU:HD23	1.76	0.49
1:A:620:ASP:HB3	1:A:623:LEU:HD22	1.94	0.49
1:A:57:GLY:HA3	1:A:170:GLU:HG3	1.94	0.49
1:A:238:ARG:NH2	1:A:239:MET:HE3	2.28	0.49
1:A:55:VAL:HA	1:A:171:VAL:HG12	1.95	0.49
1:A:282:GLU:HB2	3:A:2167:HOH:O	2.13	0.49
1:A:210:LEU:HD21	1:A:445:ALA:HA	1.95	0.48
1:B:282:GLU:HB2	3:B:2195:HOH:O	2.12	0.48
1:A:154:TYR:HB3	1:A:209:LYS:HE3	1.96	0.48
1:B:502:ARG:C	1:B:502:ARG:HD3	2.35	0.47
1:B:474:ASP:OD1	1:B:531:ARG:NH2	2.48	0.46
1:B:57:GLY:HA3	1:B:170:GLU:OE1	2.15	0.46
1:A:216:ALA:N	1:A:217:PRO:HD3	2.30	0.46
1:B:487:ASN:O	1:B:488:LYS:HB2	2.16	0.46
1:A:67[A]:ASN:HB2	1:A:103:THR:HG23	1.97	0.46
1:B:358:ASP:HA	1:B:359:PRO:HD3	1.82	0.46
1:A:205:TYR:HB3	1:A:210:LEU:HB2	1.98	0.45
1:A:300:GLN:HA	1:A:300:GLN:OE1	2.16	0.45
1:A:59:GLY:H	1:A:170:GLU:CG	2.29	0.45
1:B:48:PRO:HD2	1:B:209:LYS:HD2	1.98	0.45
1:A:585:SER:O	1:A:589:ILE:HG13	2.16	0.45
1:A:65:SER:O	1:A:101:SER:HB2	2.17	0.45
1:A:137:SER:OG	1:A:170:GLU:HA	2.17	0.44
1:A:392:ALA:HA	1:A:425:PHE:HB3	1.99	0.44
1:A:274:PHE:CE2	1:A:313:ARG:HD2	2.52	0.44
1:B:274:PHE:CE2	1:B:313:ARG:HD2	2.53	0.43
1:A:231:TYR:CE1	1:A:239:MET:HE3	2.53	0.43
1:A:185:VAL:HG21	1:A:394:TRP:CZ3	2.54	0.43

Continued on next page...

Continued from previous page...

Atom-1	Atom-2	Distance(Å)	Clash(Å)
1:B:610:GLN:NE2	3:B:2420:HOH:O	2.50	0.43
1:A:165:GLU:O	1:A:166:SER:HB3	2.18	0.43
1:A:487:ASN:O	1:A:488:LYS:HB2	2.19	0.43
1:B:205:TYR:HB3	1:B:210:LEU:HB2	2.01	0.43
1:B:50:PRO:HA	1:B:175:ASP:OD1	2.19	0.43
1:B:66:ILE:HG22	1:B:102:THR:HB	2.02	0.42
1:B:203:LYS:HG3	3:B:2111:HOH:O	2.19	0.42
1:A:557:GLU:HG2	1:A:604:ILE:HG22	2.01	0.42
1:A:218:LYS:HD2	1:A:218:LYS:N	2.34	0.42
1:B:481:HIS:HB3	1:B:605:SER:HB2	2.02	0.41
1:B:545:GLU:O	1:B:549:GLU:HB2	2.20	0.41
1:A:476:LYS:O	1:A:480:ASN:HB2	2.20	0.41
1:A:215:TYR:OH	1:A:239:MET:HE2	2.21	0.41
1:B:154:TYR:CD1	1:B:209:LYS:HG2	2.56	0.41
1:B:183:GLY:C	1:B:184:ILE:HD12	2.41	0.41
1:A:218:LYS:HD2	1:A:218:LYS:H	1.86	0.41
1:B:476:LYS:O	1:B:480:ASN:HB2	2.20	0.41
1:B:420:ASN:H	1:B:420:ASN:HD22	1.69	0.41
1:A:93:ILE:H	1:A:93:ILE:HD12	1.86	0.41
1:A:561:LEU:HD22	1:A:610:GLN:HA	2.04	0.40
1:B:201:GLN:HB3	1:B:205:TYR:CZ	2.56	0.40
1:A:164:LYS:HG3	1:A:165:GLU:HG2	2.02	0.40
1:B:436:LEU:HD21	1:B:551:CYS:HB3	2.03	0.40
1:A:127:ASN:ND2	1:A:127:ASN:N	2.55	0.40
1:B:368:PRO:HD2	1:B:372:THR:HG21	2.03	0.40
1:A:478:PHE:CE1	1:A:555:LEU:HD13	2.57	0.40

There are no symmetry-related clashes.

5.3 Torsion angles

5.3.1 Protein backbone ⓘ

In the following table, the Percentiles column shows the percent Ramachandran outliers of the chain as a percentile score with respect to all X-ray entries followed by that with respect to entries of similar resolution. The Analysed column shows the number of residues for which the backbone conformation was analysed, and the total number of residues.

Mol	Chain	Analysed	Favoured	Allowed	Outliers	Percentiles	
1	A	584/594 (98%)	556 (95%)	26 (4%)	2 (0%)	50	54
1	B	583/594 (98%)	562 (96%)	21 (4%)	0	100	100

Continued on next page...

Continued from previous page...

Mol	Chain	Analysed	Favoured	Allowed	Outliers	Percentiles	
All	All	1167/1188 (98%)	1118 (96%)	47 (4%)	2 (0%)	56	63

All (2) Ramachandran outliers are listed below:

Mol	Chain	Res	Type
1	A	139	ASP
1	A	71	GLU

5.3.2 Protein sidechains ⓘ

In the following table, the Percentiles column shows the percent sidechain outliers of the chain as a percentile score with respect to all X-ray entries followed by that with respect to entries of similar resolution. The Analysed column shows the number of residues for which the sidechain conformation was analysed, and the total number of residues.

Mol	Chain	Analysed	Rotameric	Outliers	Percentiles	
1	A	501/507 (99%)	469 (94%)	32 (6%)	25	23
1	B	500/507 (99%)	477 (95%)	23 (5%)	37	41
All	All	1001/1014 (99%)	946 (94%)	55 (6%)	30	30

All (55) residues with a non-rotameric sidechain are listed below:

Mol	Chain	Res	Type
1	A	54	GLU
1	A	68	LEU
1	A	71	GLU
1	A	80	ASN
1	A	93	ILE
1	A	104	LEU
1	A	116	LEU
1	A	127	ASN
1	A	139	ASP
1	A	172	ASN
1	A	179	VAL
1	A	217	PRO
1	A	218	LYS
1	A	219	ASP
1	A	223	HIS
1	A	277	LEU
1	A	300	GLN

Continued on next page...

Continued from previous page...

Mol	Chain	Res	Type
1	A	309	GLN
1	A	313	ARG
1	A	316	GLU
1	A	328	LEU
1	A	365	TRP
1	A	389	ARG
1	A	394	TRP
1	A	409	LEU
1	A	488	LYS
1	A	502	ARG
1	A	538	ASN
1	A	555	LEU
1	A	588	GLU
1	A	592	ASN
1	A	623	LEU
1	B	40	GLN
1	B	41	VAL
1	B	86	LEU
1	B	95	SER
1	B	96	GLU
1	B	118	GLU
1	B	223	HIS
1	B	234	SER
1	B	257	ILE
1	B	272	GLU
1	B	277	LEU
1	B	313	ARG
1	B	328	LEU
1	B	365	TRP
1	B	394	TRP
1	B	409	LEU
1	B	420	ASN
1	B	500	GLU
1	B	515	LYS
1	B	555	LEU
1	B	557	GLU
1	B	580	THR
1	B	619	PHE

Some sidechains can be flipped to improve hydrogen bonding and reduce clashes. All (17) such sidechains are listed below:

Mol	Chain	Res	Type
1	A	80	ASN
1	A	94	ASN
1	A	121	ASN
1	A	127	ASN
1	A	237	GLN
1	A	309	GLN
1	A	510	ASN
1	A	592	ASN
1	A	610	GLN
1	B	40	GLN
1	B	47	ASN
1	B	138	ASN
1	B	388	ASN
1	B	420	ASN
1	B	542	ASN
1	B	610	GLN
1	B	614	GLN

5.3.3 RNA ⓘ

There are no RNA chains in this entry.

5.4 Non-standard residues in protein, DNA, RNA chains ⓘ

There are no non-standard protein/DNA/RNA residues in this entry.

5.5 Carbohydrates ⓘ

There are no carbohydrates in this entry.

5.6 Ligand geometry ⓘ

2 ligands are modelled in this entry.

In the following table, the Counts columns list the number of bonds (or angles) for which Mogul statistics could be retrieved, the number of bonds (or angles) that are observed in the model and the number of bonds (or angles) that are defined in the chemical component dictionary. The Link column lists molecule types, if any, to which the group is linked. The Z score for a bond length (or angle) is the number of standard deviations the observed value is removed from the expected value. A bond length (or angle) with $|Z| > 2$ is considered an outlier worth inspection. RMSZ is the root-mean-square of all Z scores of the bond lengths (or angles).

Mol	Type	Chain	Res	Link	Bond lengths			Bond angles		
					Counts	RMSZ	# Z > 2	Counts	RMSZ	# Z > 2
2	X0T	A	1625	-	19,19,19	1.65	4 (21%)	23,28,28	2.39	7 (30%)
2	X0T	B	1625	-	19,19,19	1.51	3 (15%)	23,28,28	2.03	6 (26%)

In the following table, the Chirals column lists the number of chiral outliers, the number of chiral centers analysed, the number of these observed in the model and the number defined in the chemical component dictionary. Similar counts are reported in the Torsion and Rings columns. '-' means no outliers of that kind were identified.

Mol	Type	Chain	Res	Link	Chirals	Torsions	Rings
2	X0T	A	1625	-	-	0/5/6/6	0/0/2/2
2	X0T	B	1625	-	-	0/5/6/6	0/0/2/2

All (7) bond length outliers are listed below:

Mol	Chain	Res	Type	Atoms	Z	Observed(Å)	Ideal(Å)
2	A	1625	X0T	C5-N7	-4.59	1.33	1.39
2	A	1625	X0T	C2-N1	4.21	1.43	1.38
2	B	1625	X0T	C5-N7	-3.73	1.34	1.39
2	B	1625	X0T	C2-N1	3.37	1.42	1.38
2	B	1625	X0T	C2-N3	2.37	1.41	1.38
2	A	1625	X0T	C8-N7	-2.02	1.33	1.36
2	A	1625	X0T	C6-N1	2.01	1.41	1.35

All (13) bond angle outliers are listed below:

Mol	Chain	Res	Type	Atoms	Z	Observed(°)	Ideal(°)
2	A	1625	X0T	N3-C2-N1	5.59	120.67	115.69
2	A	1625	X0T	C6-N1-C2	-5.35	119.81	121.69
2	B	1625	X0T	N9-C4-N3	5.13	131.59	128.19
2	A	1625	X0T	N9-C4-N3	5.03	131.53	128.19
2	B	1625	X0T	N3-C2-N1	4.30	119.53	115.69
2	B	1625	X0T	C5-C4-N9	-4.21	107.74	112.46
2	A	1625	X0T	C5-C4-N9	-3.82	108.18	112.46
2	B	1625	X0T	C6-N1-C2	-3.63	120.42	121.69
2	A	1625	X0T	N9-C8-N7	-2.23	108.04	114.36
2	A	1625	X0T	C6-C5-C4	2.22	121.52	119.92
2	B	1625	X0T	N9-C8-N7	-2.21	108.12	114.36
2	A	1625	X0T	CAO-CAI-N7	2.12	114.67	112.18
2	B	1625	X0T	C8-N9-C4	2.08	108.74	102.94

There are no chirality outliers.

There are no torsion outliers.

There are no ring outliers.

5.7 Other polymers ⓘ

There are no such residues in this entry.

5.8 Polymer linkage issues

There are no chain breaks in this entry.

6 Fit of model and data

6.1 Protein, DNA and RNA chains

In the following table, the column labelled ‘#RSRZ> 2’ contains the number (and percentage) of RSRZ outliers, followed by percent RSRZ outliers for the chain as percentile scores relative to all X-ray entries and entries of similar resolution. The OWAB column contains the minimum, median, 95th percentile and maximum values of the occupancy-weighted average B-factor per residue. The column labelled ‘Q< 0.9’ lists the number of (and percentage) of residues with an average occupancy less than 0.9.

Mol	Chain	Analysed	<RSRZ>	#RSRZ>2		OWAB(Å ²)	Q<0.9
1	A	584/594 (98%)	-0.07	18 (3%)	47 54	12, 27, 56, 71	1 (0%)
1	B	585/594 (98%)	-0.24	13 (2%)	59 65	11, 24, 46, 60	0
All	All	1169/1188 (98%)	-0.15	31 (2%)	53 59	11, 25, 52, 71	1 (0%)

All (31) RSRZ outliers are listed below:

Mol	Chain	Res	Type	RSRZ
1	A	112	ASP	6.7
1	A	122	GLY	4.3
1	B	112	ASP	3.6
1	A	99	PRO	3.1
1	A	56	VAL	3.1
1	A	118	GLU	3.1
1	B	99	PRO	3.0
1	A	110	ASP	3.0
1	A	71	GLU	2.9
1	B	110	ASP	2.9
1	B	300	GLN	2.7
1	A	139	ASP	2.6
1	A	114	PRO	2.6
1	B	121	ASN	2.5
1	B	96	GLU	2.5
1	B	144	ILE	2.4
1	B	122	GLY	2.4
1	A	94	ASN	2.4
1	A	107	GLY	2.3
1	A	301	ASP	2.3
1	B	470	ASP	2.3
1	B	73	GLU	2.3
1	B	233	GLU	2.2
1	A	73	GLU	2.2

Continued on next page...

Continued from previous page...

Mol	Chain	Res	Type	RSRZ
1	A	127	ASN	2.1
1	A	125	ALA	2.1
1	B	40	GLN	2.1
1	A	172	ASN	2.0
1	B	118	GLU	2.0
1	A	88	ALA	2.0
1	A	233	GLU	2.0

6.2 Non-standard residues in protein, DNA, RNA chains ⓘ

There are no non-standard protein/DNA/RNA residues in this entry.

6.3 Carbohydrates ⓘ

There are no carbohydrates in this entry.

6.4 Ligands ⓘ

In the following table, the Atoms column lists the number of modelled atoms in the group and the number defined in the chemical component dictionary. LLDF column lists the quality of electron density of the group with respect to its neighbouring residues in protein, DNA or RNA chains. The B-factors column lists the minimum, median, 95th percentile and maximum values of B factors of atoms in the group. The column labelled 'Q< 0.9' lists the number of atoms with occupancy less than 0.9.

Mol	Type	Chain	Res	Atoms	RSR	LLDF	B-factors(Å ²)	Q<0.9
2	X0T	B	1625	18/18	0.13	1.27	20,24,26,27	0
2	X0T	A	1625	18/18	0.10	0.10	20,25,27,28	0

6.5 Other polymers ⓘ

There are no such residues in this entry.