



# Full wwPDB X-ray Structure Validation Report ⓘ

Feb 28, 2014 – 09:54 AM GMT

PDB ID : 1X7Z  
Title : Crystal structure of the human mitochondrial branched-chain alpha-ketoacid dehydrogenase  
Authors : Wynn, R.M.; Kato, M.; Machius, M.; Chuang, J.L.; Li, J.; Tomchick, D.R.; Chuang, D.T.  
Deposited on : 2004-08-16  
Resolution : 1.72 Å(reported)

This is a full wwPDB validation report for a publicly released PDB entry.  
We welcome your comments at [validation@mail.wwpdb.org](mailto:validation@mail.wwpdb.org)  
A user guide is available at <http://wwpdb.org/ValidationPDFNotes.html>

---

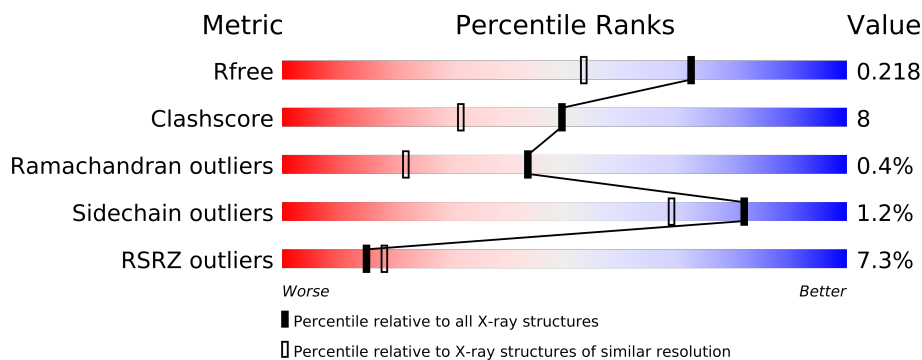
The following versions of software and data (see [references](#)) were used in the production of this report:

MolProbity : 4.02b-467  
Mogul : 1.15 2013  
Xtriage (Phenix) : dev-1323  
EDS : stable22639  
Percentile statistics : 21963  
Refmac : 5.8.0049  
CCP4 : 6.3.0 (Settle)  
Ideal geometry (proteins) : Engh & Huber (2001)  
Ideal geometry (DNA, RNA) : Parkinson et. al. (1996)  
Validation Pipeline (wwPDB-VP) : stable22683

# 1 Overall quality at a glance

The reported resolution of this entry is 1.72 Å.

Percentile scores (ranging between 0-100) for global validation metrics of the entry are shown in the following graphic. The table shows the number of entries on which the scores are based.



Metric	Whole archive (#Entries)	Similar resolution (#Entries, resolution range(Å))
$R_{free}$	66092	2979 (1.74-1.70)
Clashscore	79885	3506 (1.74-1.70)
Ramachandran outliers	78287	3449 (1.74-1.70)
Sidechain outliers	78261	3449 (1.74-1.70)
RSRZ outliers	66119	2979 (1.74-1.70)

The table below summarises the geometric issues observed across the polymeric chains and their fit to the electron density. The red, orange, yellow and green segments on the lower bar indicate the fraction of residues that contain outliers for  $\geq 3$ , 2, 1 and 0 types of geometric quality criteria. The upper red bar (where present) indicates the fraction of residues that have poor fit to the electron density.

Mol	Chain	Length	Quality of chain
1	A	400	
2	B	342	

## 2 Entry composition

There are 8 unique types of molecules in this entry. The entry contains 6561 atoms, of which 0 are hydrogen and 0 are deuterium.

In the tables below, the ZeroOcc column contains the number of atoms modelled with zero occupancy, the AltConf column contains the number of residues with at least one atom in alternate conformation and the Trace column contains the number of residues modelled with at most 2 atoms.

- Molecule 1 is a protein called 2-oxoisovalerate dehydrogenase alpha subunit.

Mol	Chain	Residues	Atoms					ZeroOcc	AltConf	Trace
1	A	391	Total	C	N	O	S	0	18	0
			3284	2068	584	610	22			

There is a discrepancy between the modelled and reference sequences:

Chain	Residue	Modelled	Actual	Comment	Reference
A	292	ASP	SER	ENGINEERED	UNP P12694

- Molecule 2 is a protein called 2-oxoisovalerate dehydrogenase beta subunit.

Mol	Chain	Residues	Atoms					ZeroOcc	AltConf	Trace
2	B	329	Total	C	N	O	S	0	5	0
			2605	1673	432	485	15			

- Molecule 3 is POTASSIUM ION (three-letter code: K) (formula: K).

Mol	Chain	Residues	Atoms		ZeroOcc	AltConf
3	B	1	Total	K	0	0
			1	1		
3	A	1	Total	K	0	0
			1	1		

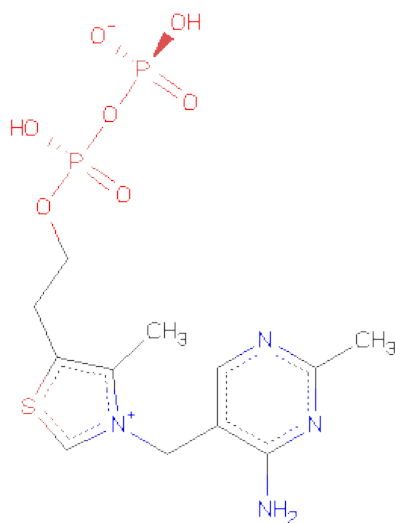
- Molecule 4 is MANGANESE (II) ION (three-letter code: MN) (formula: Mn).

Mol	Chain	Residues	Atoms		ZeroOcc	AltConf
4	A	1	Total	Mn	0	0
			1	1		

- Molecule 5 is CHLORIDE ION (three-letter code: CL) (formula: Cl).

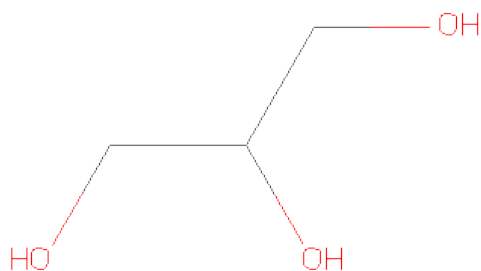
Mol	Chain	Residues	Atoms		ZeroOcc	AltConf
5	A	1	Total	Cl	0	0
			1	1		

- Molecule 6 is THIAMIN DIPHOSPHATE (three-letter code: TDP) (formula:  $C_{12}H_{18}N_4O_7P_2S$ ).



Mol	Chain	Residues	Atoms						ZeroOcc	AltConf
6	A	1	Total	C	N	O	P	S	0	0
			26	12	4	7	2	1		

- Molecule 7 is GLYCEROL (three-letter code: GOL) (formula:  $C_3H_8O_3$ ).



Mol	Chain	Residues	Atoms			ZeroOcc	AltConf
7	B	1	Total	C	O	0	0
			6	3	3		

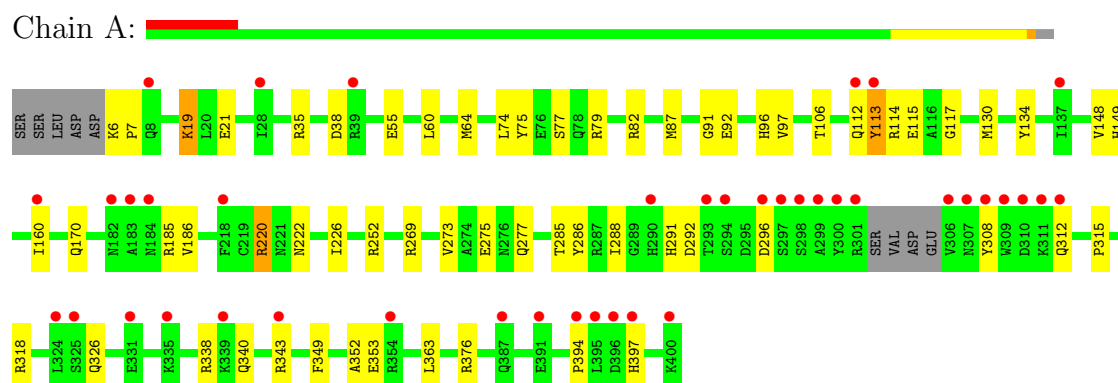
- Molecule 8 is water.

Mol	Chain	Residues	Atoms		ZeroOcc	AltConf
8	A	368	Total	O	0	0
			368	368		
8	B	268	Total	O	0	0
			268	268		

### 3 Residue-property plots

These plots are drawn for all protein, RNA and DNA chains in the entry. The first graphic for a chain summarises the proportions of errors displayed in the second graphic. The second graphic shows the sequence view annotated by issues in geometry and electron density. Residues are color-coded according to the number of geometric quality criteria for which they contain at least one outlier: green = 0, yellow = 1, orange = 2 and red = 3 or more. A red dot above a residue indicates a poor fit to the electron density ( $RSRZ > 2$ ). Stretches of 2 or more consecutive residues without any outlier are shown as a green connector. Residues present in the sample, but not in the model, are shown in grey.

- Molecule 1: 2-oxoisovalerate dehydrogenase alpha subunit



- Molecule 2: 2-oxoisovalerate dehydrogenase beta subunit



## 4 Data and refinement statistics

Property	Value	Source
Space group	P 31 2 1	Depositor
Cell constants a, b, c, $\alpha$ , $\beta$ , $\gamma$	145.31 Å   145.31 Å   69.32 Å 90.00°   90.00°   120.00°	Depositor
Resolution (Å)	50.00 – 1.72 32.18 – 1.72	Depositor EDS
% Data completeness (in resolution range)	99.9 (50.00-1.72) 99.9 (32.18-1.72)	Depositor EDS
$R_{merge}$	0.06	Depositor
$R_{sym}$	(Not available)	Depositor
$\langle I/\sigma(I) \rangle$ <sup>1</sup>	2.39 (at 1.72 Å)	Xtriage
Refinement program	REFMAC 5.2.0003	Depositor
R, $R_{free}$	0.153 , 0.189 0.188 , 0.218	Depositor DCC
$R_{free}$ test set	1516 reflections (1.70%)	DCC
Wilson B-factor (Å <sup>2</sup> )	19.6	Xtriage
Anisotropy	0.363	Xtriage
Bulk solvent $k_{sol}$ (e/Å <sup>3</sup> ), $B_{sol}$ (Å <sup>2</sup> )	0.39 , 43.2	EDS
Estimated twinning fraction	0.018 for -h,-k,l	Xtriage
L-test for twinning	$\langle  L  \rangle = 0.50$ , $\langle L^2 \rangle = 0.33$	Xtriage
Outliers	0 of 89206 reflections	Xtriage
$F_o, F_c$ correlation	0.96	EDS
Total number of atoms	6561	wwPDB-VP
Average B, all atoms (Å <sup>2</sup> )	13.0	wwPDB-VP

Xtriage's analysis on translational NCS is as follows: *The largest off-origin peak in the Patterson function is 3.11% of the height of the origin peak. No significant pseudotranslation is detected.*

<sup>1</sup>Intensities estimated from amplitudes.

## 5 Model quality

### 5.1 Standard geometry

Bond lengths and bond angles in the following residue types are not validated in this section: TDP, GOL, K, MN, CL

The Z score for a bond length (or angle) is the number of standard deviations the observed value is removed from the expected value. A bond length (or angle) with  $|Z| > 5$  is considered an outlier worth inspection. RMSZ is the root-mean-square of all Z scores of the bond lengths (or angles).

Mol	Chain	Bond lengths		Bond angles	
		RMSZ	$\# Z  > 5$	RMSZ	$\# Z  > 5$
1	A	0.91	1/3365 (0.0%)	0.86	2/4548 (0.0%)
2	B	0.96	1/2671 (0.0%)	0.83	4/3628 (0.1%)
All	All	0.93	2/6036 (0.0%)	0.85	6/8176 (0.1%)

All (2) bond length outliers are listed below:

Mol	Chain	Res	Type	Atoms	Z	Observed(Å)	Ideal(Å)
1	A	220	ARG	CG-CD	6.58	1.68	1.51
2	B	139	VAL	CB-CG1	5.10	1.63	1.52

All (6) bond angle outliers are listed below:

Mol	Chain	Res	Type	Atoms	Z	Observed(°)	Ideal(°)
2	B	118	ARG	NE-CZ-NH1	6.38	123.49	120.30
2	B	61	ARG	NE-CZ-NH1	5.95	123.28	120.30
1	A	296	ASP	CB-CG-OD2	5.43	123.18	118.30
1	A	252	ARG	NE-CZ-NH2	-5.41	117.60	120.30
2	B	61	ARG	NE-CZ-NH2	-5.11	117.75	120.30
2	B	67	ASP	CB-CG-OD2	5.07	122.86	118.30

There are no chirality outliers.

There are no planarity outliers.

### 5.2 Close contacts

In the following table, the Non-H and H(model) columns list the number of non-hydrogen atoms and hydrogen atoms in the chain respectively. The H(added) column lists the number of hydrogens added by MolProbity. The Clashes column lists the number of clashes within the asymmetric unit, and the number in parentheses is this value normalized per 1000 atoms of the molecule in the



chain. The Symm-Clashes column gives symmetry related clashes, in the same way as for the Clashes column.

Mol	Chain	Non-H	H(model)	H(added)	Clashes	Symm-Clashes
1	A	3284	0	3144	76	0
2	B	2605	0	2562	12	0
3	A	1	0	0	0	0
3	B	1	0	0	0	0
4	A	1	0	0	0	0
5	A	1	0	0	1	0
6	A	26	0	16	3	0
7	B	6	0	8	0	0
8	A	368	0	0	20	0
8	B	268	0	0	1	0
All	All	6561	0	5730	89	0

Clashscore is defined as the number of clashes calculated for the entry per 1000 atoms (including hydrogens) of the entry. The overall clashscore for this entry is 8.

All (89) close contacts within the same asymmetric unit are listed below.

Atom-1	Atom-2	Distance(Å)	Clash(Å)
6:A:801:TDP:C2	6:A:801:TDP:H2	0.97	1.49
1:A:186[A]:VAL:CG2	1:A:273[A]:VAL:CG2	1.93	1.47
1:A:186[A]:VAL:CG2	1:A:273[A]:VAL:HG23	1.43	1.44
1:A:186[A]:VAL:HG23	1:A:273[A]:VAL:CG2	1.55	1.29
1:A:87[B]:MET:SD	1:A:292:ASP:HB3	1.81	1.20
1:A:186[A]:VAL:HG21	1:A:273[A]:VAL:HG23	1.34	1.05
1:A:186[A]:VAL:HG23	1:A:273[A]:VAL:HG21	1.39	1.02
2:B:236:GLU:HG2	8:B:1120:HOH:O	1.59	1.02
1:A:186[A]:VAL:HG22	1:A:273[A]:VAL:CG2	1.86	1.02
1:A:186[A]:VAL:HG22	1:A:273[A]:VAL:HG23	1.43	1.00
1:A:112[B]:GLN:HG2	8:A:855:HOH:O	0.75	0.92
1:A:186[A]:VAL:CG2	1:A:273[A]:VAL:HG22	1.99	0.92
1:A:185:ARG:HG2	8:A:1081:HOH:O	1.72	0.89
1:A:96[A]:HIS:CE1	1:A:114:ARG:O	2.28	0.86
2:B:216:ILE:CD1	2:B:235:ARG:HD3	2.08	0.83
2:B:216:ILE:HD12	2:B:235:ARG:HD3	1.63	0.79
5:A:704:CL:CL	6:A:801:TDP:H2	2.21	0.77
1:A:112[A]:GLN:HA	1:A:160:ILE:HD12	1.66	0.77
1:A:376:ARG:CD	8:A:1078:HOH:O	2.34	0.74
1:A:64[B]:MET:SD	1:A:97[B]:VAL:HG21	2.27	0.73
1:A:87[B]:MET:SD	1:A:292:ASP:CB	2.71	0.73
1:A:376:ARG:HD3	8:A:1078:HOH:O	1.86	0.72
1:A:326:GLN:HA	8:A:1076:HOH:O	1.90	0.70

*Continued on next page...*

*Continued from previous page...*

Atom-1	Atom-2	Distance(Å)	Clash(Å)
1:A:112[B]:GLN:HB3	1:A:220:ARG:HH12	1.57	0.69
1:A:186[A]:VAL:HG23	1:A:273[A]:VAL:HG22	1.65	0.69
1:A:186[A]:VAL:HG22	1:A:273[A]:VAL:HG22	1.63	0.68
2:B:289[C]:SER:OG	2:B:309:ARG:NH1	2.27	0.68
1:A:113[B]:TYR:CZ	8:A:855:HOH:O	2.46	0.67
1:A:338:ARG:HD2	8:A:1107:HOH:O	1.95	0.66
1:A:64[B]:MET:HG3	1:A:97[B]:VAL:HG11	1.77	0.66
1:A:376:ARG:HD2	8:A:1078:HOH:O	2.00	0.60
1:A:87[A]:MET:SD	1:A:113[A]:TYR:CG	2.96	0.59
1:A:92[A]:GLU:O	1:A:96[A]:HIS:ND1	2.35	0.59
2:B:55[A]:ARG:HD2	2:B:195:ARG:HH21	1.67	0.58
1:A:82:ARG:NH2	8:A:1060:HOH:O	2.36	0.58
1:A:92[A]:GLU:HB2	1:A:96[A]:HIS:CE1	2.38	0.58
1:A:106:THR:O	1:A:185:ARG:HD2	2.05	0.57
1:A:115:GLU:HB2	8:A:910:HOH:O	2.07	0.54
1:A:96[B]:HIS:CE1	1:A:114:ARG:O	2.60	0.54
1:A:74:LEU:HD21	1:A:130[A]:MET:SD	2.48	0.54
2:B:19:GLN:HG2	2:B:203:ILE:HD11	1.90	0.54
1:A:113[B]:TYR:CE2	8:A:855:HOH:O	2.60	0.53
1:A:35[A]:ARG:HB3	8:A:1008:HOH:O	2.07	0.53
1:A:35[A]:ARG:NH2	8:A:989:HOH:O	2.32	0.53
1:A:92[A]:GLU:CB	1:A:96[A]:HIS:CE1	2.92	0.53
1:A:308:TYR:O	1:A:312:GLN:HB2	2.09	0.53
1:A:275:GLU:OE1	1:A:277:GLN:NE2	2.42	0.52
2:B:204:GLU:HB3	2:B:205:PRO:HD2	1.90	0.52
1:A:326:GLN:CA	8:A:1076:HOH:O	2.52	0.52
1:A:19:LYS:HG3	1:A:21:GLU:OE2	2.10	0.51
1:A:87[A]:MET:SD	1:A:113[A]:TYR:CD2	3.04	0.51
1:A:113[B]:TYR:CE1	8:A:855:HOH:O	2.64	0.51
1:A:130[B]:MET:SD	1:A:349:PHE:HA	2.51	0.51
1:A:134:TYR:CE2	1:A:353:GLU:HG2	2.47	0.50
1:A:82:ARG:HD3	1:A:353:GLU:OE2	2.11	0.49
1:A:291:HIS:CE1	6:A:801:TDP:S1	3.06	0.49
1:A:77:SER:OG	1:A:82:ARG:HB2	2.12	0.49
1:A:285[B]:THR:HG23	1:A:286:TYR:N	2.28	0.49
1:A:60:LEU:HD23	1:A:97[A]:VAL:HG12	1.95	0.48
2:B:142:GLY:O	2:B:146[B]:HIS:HB2	2.13	0.48
1:A:112[B]:GLN:NE2	8:A:855:HOH:O	2.42	0.48
2:B:216:ILE:HD11	2:B:235:ARG:HD3	1.93	0.48
1:A:75:TYR:HE1	8:A:1148:HOH:O	1.96	0.47
1:A:64[B]:MET:CG	1:A:97[B]:VAL:HG21	2.43	0.47
1:A:92[A]:GLU:O	1:A:96[A]:HIS:CG	2.68	0.47

*Continued on next page...*

Continued from previous page...

Atom-1	Atom-2	Distance(Å)	Clash(Å)
1:A:38:ASP:O	1:A:318:ARG:HD3	2.15	0.46
1:A:87[A]:MET:HE1	1:A:113[A]:TYR:CD2	2.50	0.46
1:A:92[A]:GLU:O	1:A:96[A]:HIS:CE1	2.68	0.46
1:A:340:GLN:HG3	1:A:343:ARG:NH2	2.30	0.46
1:A:55:GLU:HG2	8:A:847:HOH:O	2.16	0.46
1:A:96[B]:HIS:HE1	1:A:220:ARG:HD2	1.81	0.45
1:A:96[A]:HIS:CD2	1:A:117:GLY:H	2.34	0.45
2:B:115:ALA:HB2	2:B:160:ILE:HG23	1.98	0.45
1:A:96[B]:HIS:CD2	1:A:115:GLU:HA	2.52	0.45
1:A:130[A]:MET:HB3	1:A:352:ALA:CB	2.47	0.45
1:A:64[B]:MET:HE1	1:A:315:PRO:HB2	1.99	0.44
2:B:216:ILE:HD12	2:B:235:ARG:CD	2.39	0.44
1:A:130[A]:MET:HB3	1:A:352:ALA:HB2	2.00	0.44
1:A:112[A]:GLN:CA	1:A:160:ILE:HD12	2.40	0.43
1:A:134:TYR:CZ	1:A:353:GLU:HG2	2.54	0.43
1:A:222:ASN:HB3	1:A:285[B]:THR:CG2	2.48	0.43
1:A:112[B]:GLN:CG	8:A:855:HOH:O	1.65	0.43
1:A:170:GLN:O	2:B:85:GLY:HA3	2.19	0.42
1:A:113[A]:TYR:HE1	1:A:149:HIS:CE1	2.38	0.41
1:A:19:LYS:HE2	1:A:21:GLU:OE2	2.20	0.41
1:A:91[B]:GLY:CA	1:A:288:ILE:HD12	2.50	0.41
1:A:394:PRO:HB2	1:A:397:HIS:HD2	1.85	0.41
1:A:6:LYS:HA	1:A:7:PRO:HD3	1.98	0.41
1:A:318:ARG:HB2	8:A:1160:HOH:O	2.22	0.40

There are no symmetry-related clashes.

## 5.3 Torsion angles

### 5.3.1 Protein backbone ⓘ

In the following table, the Percentiles column shows the percent Ramachandran outliers of the chain as a percentile score with respect to all X-ray entries followed by that with respect to entries of similar resolution. The Analysed column shows the number of residues for which the backbone conformation was analysed, and the total number of residues.

Mol	Chain	Analysed	Favoured	Allowed	Outliers	Percentiles	
1	A	405/400 (101%)	395 (98%)	6 (2%)	4 (1%)	22	5
2	B	333/342 (97%)	323 (97%)	10 (3%)	0	100	100
All	All	738/742 (100%)	718 (97%)	16 (2%)	4 (0%)	43	17

All (4) Ramachandran outliers are listed below:

Mol	Chain	Res	Type
1	A	113[A]	TYR
1	A	113[B]	TYR
1	A	148	VAL
1	A	226	ILE

### 5.3.2 Protein sidechains ⓘ

In the following table, the Percentiles column shows the percent sidechain outliers of the chain as a percentile score with respect to all X-ray entries followed by that with respect to entries of similar resolution. The Analysed column shows the number of residues for which the sidechain conformation was analysed, and the total number of residues.

Mol	Chain	Analysed	Rotameric	Outliers	Percentiles	
1	A	343/336 (102%)	339 (99%)	4 (1%)	82	69
2	B	283/289 (98%)	280 (99%)	3 (1%)	84	72
All	All	626/625 (100%)	619 (99%)	7 (1%)	82	72

All (7) residues with a non-rotameric sidechain are listed below:

Mol	Chain	Res	Type
1	A	19	LYS
1	A	79	ARG
1	A	269	ARG
1	A	363	LEU
2	B	50	PHE
2	B	117	TYR
2	B	296	GLN

Some sidechains can be flipped to improve hydrogen bonding and reduce clashes. All (3) such sidechains are listed below:

Mol	Chain	Res	Type
1	A	184	ASN
1	A	397	HIS
2	B	296	GLN

### 5.3.3 RNA ⓘ

There are no RNA chains in this entry.

## 5.4 Non-standard residues in protein, DNA, RNA chains ⓘ

There are no non-standard protein/DNA/RNA residues in this entry.

## 5.5 Carbohydrates ⓘ

There are no carbohydrates in this entry.

## 5.6 Ligand geometry ⓘ

Of 6 ligands modelled in this entry, 4 are monoatomic - leaving 2 for Mogul analysis.

In the following table, the Counts columns list the number of bonds (or angles) for which Mogul statistics could be retrieved, the number of bonds (or angles) that are observed in the model and the number of bonds (or angles) that are defined in the chemical component dictionary. The Link column lists molecule types, if any, to which the group is linked. The Z score for a bond length (or angle) is the number of standard deviations the observed value is removed from the expected value. A bond length (or angle) with  $|Z| > 2$  is considered an outlier worth inspection. RMSZ is the root-mean-square of all Z scores of the bond lengths (or angles).

Mol	Type	Chain	Res	Link	Bond lengths			Bond angles		
					Counts	RMSZ	$\# Z  > 2$	Counts	RMSZ	$\# Z  > 2$
6	TDP	A	801	4	27,27,27	2.38	7 (25%)	40,40,40	2.13	12 (30%)
7	GOL	B	901	-	5,5,5	0.21	0	5,5,5	0.47	0

In the following table, the Chirals column lists the number of chiral outliers, the number of chiral centers analysed, the number of these observed in the model and the number defined in the chemical component dictionary. Similar counts are reported in the Torsion and Rings columns. '-' means no outliers of that kind were identified.

Mol	Type	Chain	Res	Link	Chirals	Torsions	Rings
6	TDP	A	801	4	-	0/17/17/17	0/2/2/2
7	GOL	B	901	-	-	0/4/4/4	0/0/0/0

All (7) bond length outliers are listed below:

Mol	Chain	Res	Type	Atoms	Z	Observed(Å)	Ideal(Å)
6	A	801	TDP	C5-S1	6.03	1.78	1.73
6	A	801	TDP	C4'-N3'	4.96	1.43	1.35
6	A	801	TDP	C2-S1	4.53	1.83	1.68
6	A	801	TDP	C5-C4	3.86	1.41	1.36
6	A	801	TDP	C4A-C4	3.41	1.57	1.49
6	A	801	TDP	C2-N3	3.37	1.46	1.35

*Continued on next page...*

*Continued from previous page...*

Mol	Chain	Res	Type	Atoms	Z	Observed(Å)	Ideal(Å)
6	A	801	TDP	C2'-N3'	2.46	1.39	1.34

All (12) bond angle outliers are listed below:

Mol	Chain	Res	Type	Atoms	Z	Observed(°)	Ideal(°)
6	A	801	TDP	S1-C2-N3	-5.75	104.01	112.62
6	A	801	TDP	C6'-N1'-C2'	5.37	125.11	115.68
6	A	801	TDP	C35-N3-C2	-4.61	115.27	125.05
6	A	801	TDP	N1'-C2'-N3'	-3.86	118.68	125.65
6	A	801	TDP	C2A-C2'-N1'	3.55	121.25	117.02
6	A	801	TDP	C5-C4-N3	3.01	113.65	107.53
6	A	801	TDP	C2-S1-C5	2.98	93.62	91.63
6	A	801	TDP	C2-N3-C4	2.96	118.53	110.82
6	A	801	TDP	C5'-C35-N3	-2.68	108.70	113.28
6	A	801	TDP	C5A-C5-C4	2.64	129.36	127.44
6	A	801	TDP	C5'-C6'-N1'	-2.33	119.66	123.86
6	A	801	TDP	C4A-C4-C5	-2.10	123.85	129.10

There are no chirality outliers.

There are no torsion outliers.

There are no ring outliers.

## 5.7 Other polymers ⓘ

There are no such residues in this entry.

## 5.8 Polymer linkage issues

There are no chain breaks in this entry.

## 6 Fit of model and data ⓘ

### 6.1 Protein, DNA and RNA chains ⓘ

In the following table, the column labelled ‘#RSRZ> 2’ contains the number (and percentage) of RSRZ outliers, followed by percent RSRZ outliers for the chain as percentile scores relative to all X-ray entries and entries of similar resolution. The OWAB column contains the minimum, median, 95<sup>th</sup> percentile and maximum values of the occupancy-weighted average B-factor per residue. The column labelled ‘Q< 0.9’ lists the number of (and percentage) of residues with an average occupancy less than 0.9.

Mol	Chain	Analysed	<RSRZ>	#RSRZ>2	OWAB(Å <sup>2</sup> )	Q<0.9
1	A	391/400 (97%)	0.45	41 (10%) 7 9	5, 10, 26, 41	0
2	B	329/342 (96%)	0.14	12 (3%) 41 46	6, 10, 19, 38	0
All	All	720/742 (97%)	0.31	53 (7%) 15 17	5, 10, 23, 41	0

All (53) RSRZ outliers are listed below:

Mol	Chain	Res	Type	RSRZ
1	A	308	TYR	6.1
2	B	15	TYR	5.1
1	A	300	TYR	5.0
1	A	113[A]	TYR	4.7
1	A	298	SER	4.7
1	A	311	LYS	4.7
1	A	309	TRP	4.7
1	A	299	ALA	4.6
1	A	28	ILE	4.4
1	A	312	GLN	4.3
1	A	294	SER	4.3
1	A	397	HIS	4.3
1	A	310	ASP	4.3
1	A	400	LYS	4.1
1	A	183	ALA	4.0
1	A	307	ASN	3.8
1	A	395	LEU	3.7
1	A	387	GLN	3.6
2	B	301	LEU	3.2
1	A	396	ASP	3.1
1	A	296	ASP	3.0
1	A	306	VAL	3.0
2	B	246	GLY	3.0
1	A	290	HIS	3.0

*Continued on next page...*

*Continued from previous page...*

Mol	Chain	Res	Type	RSRZ
1	A	297	SER	2.9
1	A	301	ARG	2.9
1	A	182	ASN	2.9
2	B	342	TYR	2.8
2	B	341	ASN	2.6
1	A	184	ASN	2.5
1	A	8	GLN	2.5
1	A	331	GLU	2.4
2	B	197	ALA	2.4
2	B	340	ILE	2.4
1	A	218	PHE	2.4
2	B	235	ARG	2.3
2	B	245	LEU	2.3
1	A	112[A]	GLN	2.3
2	B	16	GLY	2.3
2	B	270	ILE	2.3
1	A	391	GLU	2.2
1	A	137	ILE	2.2
1	A	394	PRO	2.2
1	A	339	LYS	2.2
1	A	335	LYS	2.2
1	A	293	THR	2.2
1	A	39	ARG	2.1
1	A	325	SER	2.1
1	A	354	ARG	2.1
2	B	239	SER	2.1
1	A	324	LEU	2.1
1	A	343	ARG	2.0
1	A	160	ILE	2.0

## 6.2 Non-standard residues in protein, DNA, RNA chains ⓘ

There are no non-standard protein/DNA/RNA residues in this entry.

## 6.3 Carbohydrates ⓘ

There are no carbohydrates in this entry.



## 6.4 Ligands

In the following table, the Atoms column lists the number of modelled atoms in the group and the number defined in the chemical component dictionary. LLDF column lists the quality of electron density of the group with respect to its neighbouring residues in protein, DNA or RNA chains. The B-factors column lists the minimum, median, 95<sup>th</sup> percentile and maximum values of B factors of atoms in the group. The column labelled 'Q< 0.9' lists the number of atoms with occupancy less than 0.9.

Mol	Type	Chain	Res	Atoms	RSR	LLDF	B-factors(Å <sup>2</sup> )	Q<0.9
3	K	B	702	1/1	0.16	1.82	15,15,15,15	0
4	MN	A	703	1/1	0.18	1.32	13,13,13,13	0
3	K	A	701	1/1	0.15	0.07	14,14,14,14	0
5	CL	A	704	1/1	0.10	-0.60	37,37,37,37	0
7	GOL	B	901	6/6	0.05	-1.32	7,8,10,11	0
6	TDP	A	801	26/26	0.06	-1.46	2,2,4,6	0

## 6.5 Other polymers

There are no such residues in this entry.