



Full wwPDB X-ray Structure Validation Report ⓘ

Feb 27, 2014 – 01:01 AM GMT

PDB ID : 1XAI
Title : CRYSTAL STRUCTURE OF STAPHYLOCOCCUS AUREUS 3-DEHYDROQUINATE SYNTHASE (DHQS) IN COMPLEX WITH ZN²⁺, NAD⁺ AND CARBAPHOSPHONATE
Authors : Nichols, C.E.; Ren, J.; Leslie, K.; Dhaliwal, B.; Lockyer, M.; Charles, I.; Hawkins, A.R.; Stammers, D.K.
Deposited on : 2004-08-25
Resolution : 2.30 Å(reported)

This is a full wwPDB validation report for a publicly released PDB entry.
We welcome your comments at validation@mail.wwpdb.org
A user guide is available at <http://wwpdb.org/ValidationPDFNotes.html>

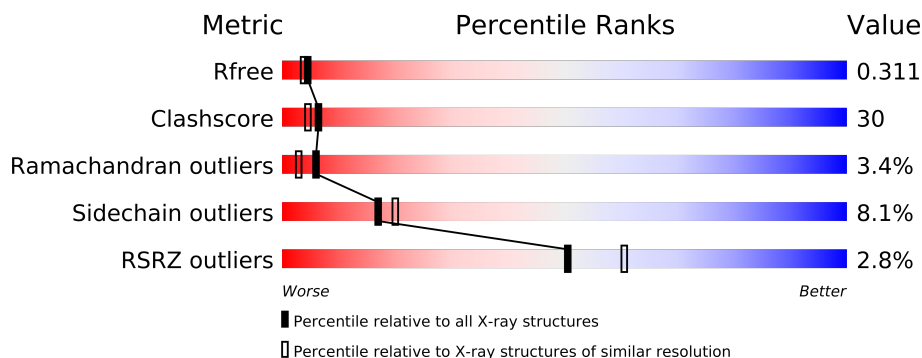
The following versions of software and data (see [references](#)) were used in the production of this report:

MolProbity	:	4.02b-467
Mogul	:	1.15 2013
Xtriage (Phenix)	:	dev-1323
EDS	:	stable22639
Percentile statistics	:	21963
Refmac	:	5.8.0049
CCP4	:	6.3.0 (Settle)
Ideal geometry (proteins)	:	Engh & Huber (2001)
Ideal geometry (DNA, RNA)	:	Parkinson et. al. (1996)
Validation Pipeline (wwPDB-VP)	:	stable22683

1 Overall quality at a glance

The reported resolution of this entry is 2.30 Å.

Percentile scores (ranging between 0-100) for global validation metrics of the entry are shown in the following graphic. The table shows the number of entries on which the scores are based.



Metric	Whole archive (#Entries)	Similar resolution (#Entries, resolution range(Å))
R_{free}	66092	2929 (2.30-2.30)
Clashscore	79885	3679 (2.30-2.30)
Ramachandran outliers	78287	3642 (2.30-2.30)
Sidechain outliers	78261	3641 (2.30-2.30)
RSRZ outliers	66119	2930 (2.30-2.30)

The table below summarises the geometric issues observed across the polymeric chains and their fit to the electron density. The red, orange, yellow and green segments on the lower bar indicate the fraction of residues that contain outliers for ≥ 3 , 2, 1 and 0 types of geometric quality criteria. The upper red bar (where present) indicates the fraction of residues that have poor fit to the electron density.

Mol	Chain	Length	Quality of chain
1	A	354	
1	B	354	

The following table lists non-polymeric compounds that are outliers for geometric or electron-density-fit criteria:

Mol	Type	Chain	Res	Geometry	Electron density
2	ZN	A	600	-	X
2	ZN	B	601	-	X

2 Entry composition

There are 4 unique types of molecules in this entry. The entry contains 5943 atoms, of which 0 are hydrogen and 0 are deuterium.

In the tables below, the ZeroOcc column contains the number of atoms modelled with zero occupancy, the AltConf column contains the number of residues with at least one atom in alternate conformation and the Trace column contains the number of residues modelled with at most 2 atoms.

- Molecule 1 is a protein called 3-dehydroquinate synthase.

Mol	Chain	Residues	Atoms					ZeroOcc	AltConf	Trace
1	A	352	Total	C	N	O	S	0	0	0
			2831	1831	466	526	8			
1	B	352	Total	C	N	O	S	0	0	0
			2831	1831	466	526	8			

There are 26 discrepancies between the modelled and reference sequences:

Chain	Residue	Modelled	Actual	Comment	Reference
A	22	LYS	ASP	see remark 999	UNP Q6GGU4
A	23	TYR	HIS	see remark 999	UNP Q6GGU4
A	25	GLY	SER	see remark 999	UNP Q6GGU4
A	28	LEU	ILE	see remark 999	UNP Q6GGU4
A	29	ASN	ASP	see remark 999	UNP Q6GGU4
A	36	LEU	ILE	see remark 999	UNP Q6GGU4
A	41	TYR	HIS	see remark 999	UNP Q6GGU4
A	48	ASN	ASP	see remark 999	UNP Q6GGU4
A	109	VAL	ILE	see remark 999	UNP Q6GGU4
A	170	LYS	GLU	see remark 999	UNP Q6GGU4
A	226	VAL	ILE	see remark 999	UNP Q6GGU4
A	282	SER	ASN	see remark 999	UNP Q6GGU4
A	326	MET	ILE	see remark 999	UNP Q6GGU4
B	22	LYS	ASP	see remark 999	UNP Q6GGU4
B	23	TYR	HIS	see remark 999	UNP Q6GGU4
B	25	GLY	SER	see remark 999	UNP Q6GGU4
B	28	LEU	ILE	see remark 999	UNP Q6GGU4
B	29	ASN	ASP	see remark 999	UNP Q6GGU4
B	36	LEU	ILE	see remark 999	UNP Q6GGU4
B	41	TYR	HIS	see remark 999	UNP Q6GGU4
B	48	ASN	ASP	see remark 999	UNP Q6GGU4
B	109	VAL	ILE	see remark 999	UNP Q6GGU4
B	170	LYS	GLU	see remark 999	UNP Q6GGU4
B	226	VAL	ILE	see remark 999	UNP Q6GGU4
B	282	SER	ASN	see remark 999	UNP Q6GGU4

Continued on next page...

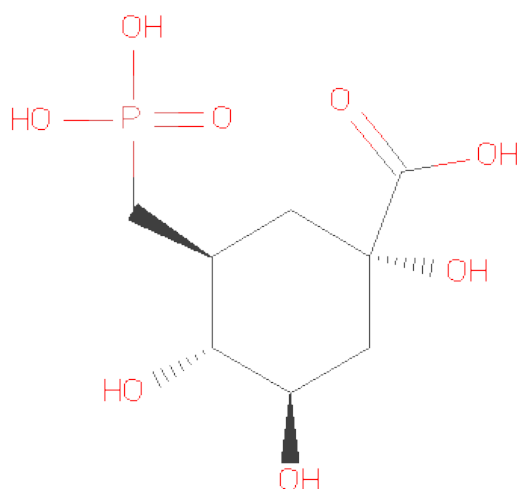
Continued from previous page...

Chain	Residue	Modelled	Actual	Comment	Reference
B	326	MET	ILE	see remark 999	UNP Q6GGU4

- Molecule 2 is ZINC ION (three-letter code: ZN) (formula: Zn).

Mol	Chain	Residues	Atoms		ZeroOcc	AltConf
2	B	1	Total	Zn	0	0
			1	1		
2	A	1	Total	Zn	0	0
			1	1		

- Molecule 3 is [1R-(1ALPHA,3BETA,4ALPHA,5BETA)]-5-(PHOSPHONOMETHYL)-1,3,4-TRIHYDROXYCYCLOHEXANE-1-CARBOXYLICACID (three-letter code: CRB) (formula: C₈H₁₅O₈P).



Mol	Chain	Residues	Atoms				ZeroOcc	AltConf
3	A	1	Total	C	O	P	0	0
			17	8	8	1		
3	B	1	Total	C	O	P	0	0
			17	8	8	1		

- Molecule 4 is water.

Mol	Chain	Residues	Atoms		ZeroOcc	AltConf
4	A	123	Total	O	0	0
			123	123		

Continued on next page...

Continued from previous page...

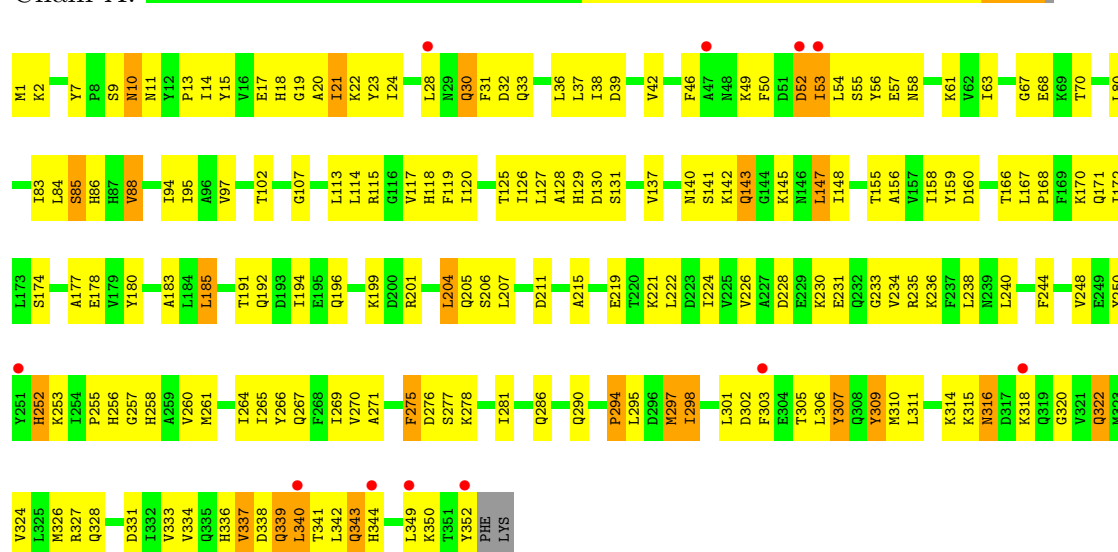
Mol	Chain	Residues	Atoms		ZeroOcc	AltConf
4	B	122	Total 122	O 122	0	0

3 Residue-property plots

These plots are drawn for all protein, RNA and DNA chains in the entry. The first graphic for a chain summarises the proportions of errors displayed in the second graphic. The second graphic shows the sequence view annotated by issues in geometry and electron density. Residues are color-coded according to the number of geometric quality criteria for which they contain at least one outlier: green = 0, yellow = 1, orange = 2 and red = 3 or more. A red dot above a residue indicates a poor fit to the electron density ($RSRZ > 2$). Stretches of 2 or more consecutive residues without any outlier are shown as a green connector. Residues present in the sample, but not in the model, are shown in grey.

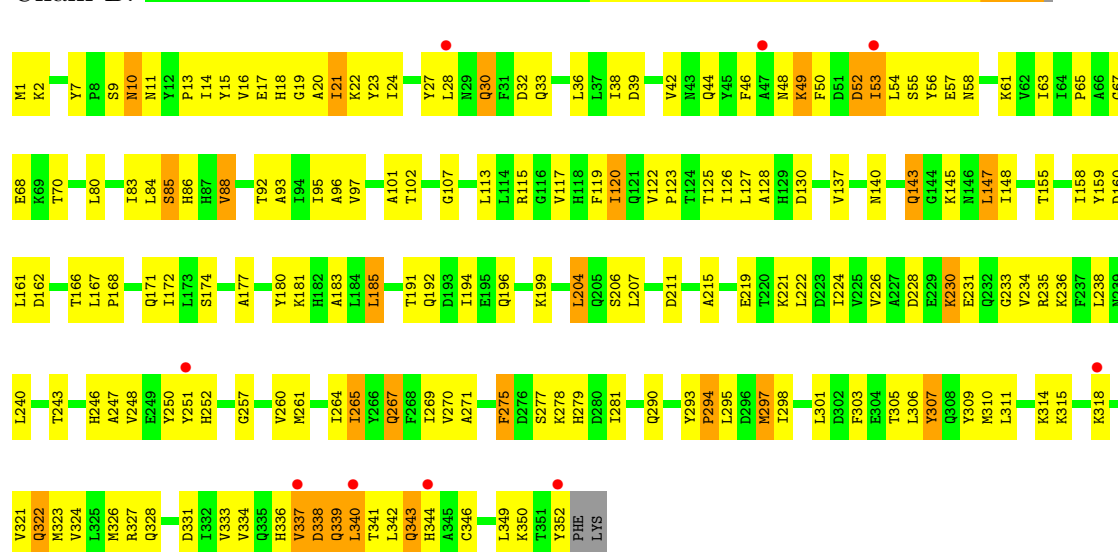
• Molecule 1: 3-dehydroquinate synthase

Chain A:



• Molecule 1: 3-dehydroquinate synthase

Chain B:



4 Data and refinement statistics

Property	Value	Source
Space group	P 43	Depositor
Cell constants a, b, c, α , β , γ	54.90Å 54.90Å 229.11Å 90.00° 90.00° 90.00°	Depositor
Resolution (Å)	24.01 – 2.30 24.01 – 2.10	Depositor EDS
% Data completeness (in resolution range)	98.0 (24.01-2.30) 95.5 (24.01-2.10)	Depositor EDS
R_{merge}	0.04	Depositor
R_{sym}	(Not available)	Depositor
$\langle I/\sigma(I) \rangle$ ¹	2.55 (at 2.10Å)	Xtriage
Refinement program	CNS 1.1	Depositor
R, R_{free}	0.211 , 0.312 0.211 , 0.311	Depositor DCC
R_{free} test set	2942 reflections (10.04%)	DCC
Wilson B-factor (Å ²)	35.6	Xtriage
Anisotropy	0.591	Xtriage
Bulk solvent k_{sol} (e/Å ³), B_{sol} (Å ²)	0.36 , 93.0	EDS
Estimated twinning fraction	0.487 for h,-k,-l	Xtriage
L-test for twinning	$\langle L \rangle = 0.48$, $\langle L^2 \rangle = 0.31$	Xtriage
Outliers	0 of 37497 reflections	Xtriage
F_o, F_c correlation	0.95	EDS
Total number of atoms	5943	wwPDB-VP
Average B, all atoms (Å ²)	61.0	wwPDB-VP

Xtriage's analysis on translational NCS is as follows: *The largest off-origin peak in the Patterson function is 5.97% of the height of the origin peak. No significant pseudotranslation is detected.*

¹Intensities estimated from amplitudes.

5 Model quality

5.1 Standard geometry

Bond lengths and bond angles in the following residue types are not validated in this section: CRB, ZN

The Z score for a bond length (or angle) is the number of standard deviations the observed value is removed from the expected value. A bond length (or angle) with $|Z| > 5$ is considered an outlier worth inspection. RMSZ is the root-mean-square of all Z scores of the bond lengths (or angles).

Mol	Chain	Bond lengths		Bond angles	
		RMSZ	$\# Z > 5$	RMSZ	$\# Z > 5$
1	A	0.41	0/2897	0.64	0/3923
1	B	0.41	0/2897	0.64	0/3923
All	All	0.41	0/5794	0.64	0/7846

There are no bond length outliers.

There are no bond angle outliers.

There are no chirality outliers.

There are no planarity outliers.

5.2 Close contacts

In the following table, the Non-H and H(model) columns list the number of non-hydrogen atoms and hydrogen atoms in the chain respectively. The H(added) column lists the number of hydrogens added by MolProbity. The Clashes column lists the number of clashes within the asymmetric unit, and the number in parentheses is this value normalized per 1000 atoms of the molecule in the chain. The Symm-Clashes column gives symmetry related clashes, in the same way as for the Clashes column.

Mol	Chain	Non-H	H(model)	H(added)	Clashes	Symm-Clashes
1	A	2831	0	2797	168	0
1	B	2831	0	2797	178	0
2	A	1	0	0	0	0
2	B	1	0	0	0	0
3	A	17	0	11	0	0
3	B	17	0	11	1	0
4	A	123	0	0	3	0
4	B	122	0	0	6	0
All	All	5943	0	5616	339	0

Clashscore is defined as the number of clashes calculated for the entry per 1000 atoms (including hydrogens) of the entry. The overall clashscore for this entry is 30.

All (339) close contacts within the same asymmetric unit are listed below.

Atom-1	Atom-2	Distance(Å)	Clash(Å)
1:A:301:LEU:HB2	1:A:350:LYS:HE3	1.39	1.03
1:B:301:LEU:HB2	1:B:350:LYS:HE3	1.40	1.00
1:A:270:VAL:HG13	1:A:341:THR:HG21	1.48	0.95
1:A:113:LEU:HD23	1:A:117:VAL:HG11	1.50	0.94
1:B:113:LEU:HD23	1:B:117:VAL:HG11	1.50	0.93
1:A:222:LEU:HD21	4:A:676:HOH:O	1.69	0.93
1:B:270:VAL:HG13	1:B:341:THR:HG21	1.54	0.89
1:B:185:LEU:HD11	1:B:240:LEU:HD22	1.56	0.87
1:B:143:GLN:HA	1:B:143:GLN:HE21	1.39	0.87
1:A:53:ILE:H	1:A:53:ILE:HD12	1.41	0.85
1:A:143:GLN:HA	1:A:143:GLN:HE21	1.40	0.85
1:A:185:LEU:HD11	1:A:240:LEU:HD22	1.58	0.84
1:B:46:PHE:HB3	1:B:49:LYS:HB2	1.60	0.83
1:A:177:ALA:HA	1:A:261:MET:HE3	1.61	0.82
1:A:39:ASP:HB2	1:A:102:THR:HG21	1.63	0.80
1:A:185:LEU:CD1	1:A:240:LEU:HD22	2.11	0.79
1:A:46:PHE:HB3	1:A:49:LYS:HB2	1.64	0.78
1:B:61:LYS:HE3	1:B:63:ILE:HD11	1.66	0.78
1:B:27:TYR:O	1:B:30:GLN:HB2	1.84	0.78
1:B:172:ILE:CG2	1:B:204:LEU:HD22	2.14	0.77
1:B:185:LEU:CD1	1:B:240:LEU:HD22	2.14	0.77
1:A:61:LYS:HE3	1:A:63:ILE:HD11	1.69	0.75
1:B:143:GLN:CA	1:B:143:GLN:HE21	2.00	0.74
1:B:39:ASP:HB2	1:B:102:THR:HG21	1.68	0.74
1:B:172:ILE:HG22	1:B:204:LEU:HD22	1.72	0.72
1:B:2:LYS:HD2	1:B:15:TYR:HE1	1.55	0.72
1:A:143:GLN:CA	1:A:143:GLN:HE21	2.02	0.72
1:A:24:ILE:HD13	1:A:158:ILE:HD13	1.72	0.72
1:A:307:TYR:CE1	1:A:339:GLN:HB3	2.23	0.72
1:B:21:ILE:O	1:B:21:ILE:HD13	1.90	0.71
1:B:46:PHE:HB3	1:B:49:LYS:CB	2.21	0.71
1:A:46:PHE:HB3	1:A:49:LYS:CB	2.22	0.70
1:A:22:LYS:HE3	1:A:23:TYR:CE1	2.27	0.70
1:A:21:ILE:HD13	1:A:21:ILE:O	1.91	0.69
1:B:307:TYR:CE1	1:B:339:GLN:HB3	2.28	0.69
1:A:248:VAL:O	1:A:252:HIS:HB2	1.92	0.69
1:B:39:ASP:HB3	1:B:42:VAL:HG23	1.74	0.69
1:B:247:ALA:O	1:B:251:TYR:HB3	1.90	0.69
1:A:18:HIS:NE2	1:A:211:ASP:OD1	2.22	0.68

Continued on next page...

Continued from previous page...

Atom-1	Atom-2	Distance(Å)	Clash(Å)
1:B:22:LYS:HE3	1:B:23:TYR:CE1	2.29	0.68
1:B:24:ILE:HD13	1:B:158:ILE:HD13	1.76	0.68
1:A:343:GLN:HE21	1:A:343:GLN:HA	1.60	0.67
1:A:294:PRO:O	1:A:295:LEU:HB2	1.96	0.66
1:A:39:ASP:HB3	1:A:42:VAL:HG23	1.77	0.66
1:B:33:GLN:HE22	1:B:88:VAL:HA	1.61	0.66
1:A:125:THR:HG23	1:A:128:ALA:H	1.61	0.65
1:B:39:ASP:HB3	1:B:42:VAL:CG2	2.27	0.65
1:B:231:GLU:HA	1:B:235:ARG:HB3	1.80	0.64
1:B:294:PRO:O	1:B:295:LEU:HB2	1.97	0.64
1:B:307:TYR:HE2	1:B:311:LEU:HD11	1.63	0.64
1:A:95:ILE:N	1:A:95:ILE:HD12	2.13	0.63
1:B:343:GLN:HE21	1:B:343:GLN:HA	1.63	0.63
1:B:7:TYR:CE2	1:B:226:VAL:HA	2.33	0.63
1:B:125:THR:HG23	1:B:128:ALA:H	1.61	0.63
1:A:269:ILE:HD12	1:A:349:LEU:HB2	1.81	0.63
1:B:215:ALA:O	1:B:219:GLU:HG3	1.99	0.62
1:B:306:LEU:O	1:B:310:MET:HG3	2.00	0.62
1:B:303:PHE:HD1	1:B:343:GLN:NE2	1.97	0.62
1:A:50:PHE:O	1:A:54:LEU:HB2	1.99	0.61
1:A:39:ASP:HB3	1:A:42:VAL:CG2	2.30	0.61
1:B:67:GLY:O	1:B:70:THR:HG22	2.02	0.60
1:A:306:LEU:O	1:A:310:MET:HG3	2.01	0.60
1:A:233:GLY:O	1:A:236:LYS:HG3	2.02	0.60
1:A:231:GLU:HA	1:A:235:ARG:HB3	1.82	0.60
1:A:7:TYR:CE2	1:A:226:VAL:HA	2.37	0.59
1:B:143:GLN:HA	1:B:143:GLN:NE2	2.14	0.59
1:B:50:PHE:O	1:B:54:LEU:HB2	2.02	0.59
1:A:307:TYR:HE2	1:A:311:LEU:HD11	1.66	0.59
1:A:140:ASN:OD1	1:A:145:LYS:HA	2.03	0.59
1:B:107:GLY:HA3	1:B:137:VAL:HG11	1.84	0.59
1:B:46:PHE:HD2	1:B:49:LYS:HG3	1.68	0.58
1:A:67:GLY:O	1:A:70:THR:HG22	2.02	0.58
1:A:340:LEU:HD13	1:A:341:THR:N	2.19	0.58
1:B:278:LYS:HA	4:B:662:HOH:O	2.03	0.57
1:B:32:ASP:O	1:B:33:GLN:HG3	2.05	0.57
1:A:54:LEU:O	1:A:54:LEU:HD23	2.06	0.56
1:B:125:THR:HG21	4:B:610:HOH:O	2.05	0.56
1:A:33:GLN:HE22	1:A:88:VAL:HA	1.70	0.56
1:B:251:TYR:CD2	1:B:306:LEU:HD21	2.40	0.56
1:B:13:PRO:C	1:B:14:ILE:HG13	2.25	0.56
1:B:95:ILE:HD12	1:B:95:ILE:N	2.20	0.56

Continued on next page...

Continued from previous page...

Atom-1	Atom-2	Distance(Å)	Clash(Å)
1:B:140:ASN:OD1	1:B:145:LYS:HA	2.06	0.56
1:B:58:ASN:N	1:B:58:ASN:HD22	2.03	0.55
1:B:143:GLN:CA	1:B:143:GLN:NE2	2.70	0.55
1:B:53:ILE:H	1:B:53:ILE:CD1	2.20	0.55
1:A:107:GLY:HA3	1:A:137:VAL:HG11	1.88	0.55
1:A:143:GLN:HA	1:A:143:GLN:NE2	2.16	0.55
1:A:177:ALA:HA	1:A:261:MET:CE	2.34	0.55
1:B:53:ILE:HD13	1:B:54:LEU:N	2.22	0.55
1:A:315:LYS:HE3	1:A:324:VAL:HG23	1.88	0.55
1:A:336:HIS:ND1	1:A:337:VAL:N	2.54	0.54
1:B:248:VAL:O	1:B:252:HIS:HB2	2.08	0.54
1:A:84:LEU:C	1:A:86:HIS:H	2.11	0.54
1:A:172:ILE:HG22	1:A:204:LEU:HD22	1.89	0.54
1:B:171:GLN:HE21	1:B:171:GLN:HA	1.73	0.54
1:B:224:ILE:HG13	1:B:238:LEU:HD21	1.89	0.54
1:B:54:LEU:HD23	1:B:54:LEU:O	2.07	0.54
1:B:340:LEU:HD13	1:B:341:THR:N	2.22	0.54
1:B:2:LYS:HD2	1:B:15:TYR:CE1	2.40	0.54
1:B:252:HIS:CE1	1:B:301:LEU:HD23	2.43	0.54
1:A:215:ALA:O	1:A:219:GLU:HG3	2.08	0.54
1:A:85:SER:HA	1:B:143:GLN:OE1	2.08	0.53
1:B:84:LEU:C	1:B:86:HIS:H	2.11	0.53
1:A:2:LYS:HD2	1:A:15:TYR:HE1	1.73	0.53
1:B:336:HIS:ND1	1:B:337:VAL:N	2.56	0.53
1:B:233:GLY:O	1:B:236:LYS:HG3	2.08	0.53
1:A:54:LEU:HD11	1:A:61:LYS:HB2	1.90	0.53
1:A:80:LEU:HD13	1:B:148:ILE:HG12	1.89	0.53
1:B:340:LEU:HD22	1:B:344:HIS:CD2	2.43	0.53
1:A:303:PHE:HD1	1:A:343:GLN:NE2	2.07	0.53
1:A:328:GLN:O	1:A:331:ASP:N	2.41	0.53
1:B:46:PHE:CD2	1:B:49:LYS:HG3	2.43	0.53
1:A:125:THR:HG21	4:A:601:HOH:O	2.07	0.53
1:A:7:TYR:HB2	1:A:11:ASN:OD1	2.08	0.52
1:A:32:ASP:O	1:A:33:GLN:HG3	2.09	0.52
1:B:206:SER:O	1:B:207:LEU:HB2	2.08	0.52
1:A:206:SER:O	1:A:207:LEU:HB2	2.09	0.52
1:A:1:MET:N	1:A:17:GLU:HG2	2.24	0.52
1:B:303:PHE:CD1	1:B:343:GLN:NE2	2.77	0.52
1:A:143:GLN:OE1	1:B:85:SER:HA	2.09	0.52
1:A:46:PHE:HB3	1:A:49:LYS:HG3	1.91	0.52
1:B:180:TYR:O	1:B:183:ALA:HB3	2.09	0.52
1:B:177:ALA:HA	1:B:261:MET:HE3	1.92	0.51

Continued on next page...

Continued from previous page...

Atom-1	Atom-2	Distance(Å)	Clash(Å)
1:B:261:MET:HG3	1:B:293:TYR:CE1	2.45	0.51
1:A:88:VAL:HG23	1:A:114:LEU:HD11	1.92	0.51
1:A:58:ASN:N	1:A:58:ASN:HD22	2.06	0.51
1:B:328:GLN:O	1:B:331:ASP:N	2.43	0.51
1:B:57:GLU:C	1:B:58:ASN:HD22	2.13	0.51
1:B:127:LEU:O	1:B:130:ASP:HB3	2.11	0.51
1:A:255:PRO:HB2	1:A:258:HIS:ND1	2.26	0.51
1:A:143:GLN:CA	1:A:143:GLN:NE2	2.73	0.51
1:B:147:LEU:C	1:B:148:ILE:HD12	2.31	0.51
1:B:54:LEU:HD11	1:B:61:LYS:HB2	1.93	0.51
1:B:172:ILE:HD12	1:B:207:LEU:HD21	1.92	0.51
1:B:303:PHE:CE2	1:B:307:TYR:HB2	2.45	0.51
1:A:46:PHE:CD2	1:A:49:LYS:HG3	2.46	0.51
1:A:224:ILE:HG13	1:A:238:LEU:HD21	1.93	0.51
1:A:172:ILE:CG2	1:A:204:LEU:HD22	2.41	0.51
1:B:171:GLN:NE2	1:B:171:GLN:HA	2.26	0.51
1:B:36:LEU:HD21	1:B:38:ILE:HB	1.92	0.50
1:B:126:ILE:HG13	1:B:167:LEU:CD1	2.41	0.50
1:A:309:TYR:CD1	1:A:309:TYR:C	2.85	0.50
1:B:1:MET:N	1:B:17:GLU:HG2	2.26	0.50
1:A:171:GLN:NE2	1:A:171:GLN:HA	2.26	0.50
1:B:307:TYR:CE2	1:B:311:LEU:HD11	2.46	0.49
1:B:18:HIS:NE2	1:B:211:ASP:OD1	2.37	0.49
1:A:39:ASP:CB	1:A:102:THR:HG21	2.39	0.49
1:B:54:LEU:C	1:B:56:TYR:H	2.14	0.49
1:A:174:SER:O	1:A:257:GLY:HA3	2.12	0.49
1:B:53:ILE:N	1:B:53:ILE:CD1	2.75	0.49
1:B:174:SER:O	1:B:257:GLY:HA3	2.12	0.49
1:A:95:ILE:CD1	1:A:95:ILE:N	2.76	0.49
1:B:148:ILE:HD12	1:B:148:ILE:N	2.28	0.49
1:B:130:ASP:O	1:B:221:LYS:NZ	2.44	0.49
1:A:340:LEU:HD22	1:A:344:HIS:CD2	2.47	0.49
1:B:32:ASP:C	1:B:33:GLN:HG3	2.33	0.49
1:B:101:ALA:HB3	4:B:660:HOH:O	2.13	0.49
1:A:276:ASP:OD1	1:A:278:LYS:HG3	2.13	0.49
1:A:270:VAL:HG22	1:A:341:THR:HG22	1.95	0.48
1:A:303:PHE:CE2	1:A:307:TYR:HB2	2.47	0.48
1:A:322:GLN:HE21	1:A:322:GLN:HB3	1.47	0.48
1:A:46:PHE:HD2	1:A:49:LYS:HG3	1.77	0.48
1:A:148:ILE:HG12	1:B:80:LEU:HD13	1.93	0.48
1:A:115:ARG:NH1	1:B:314:LYS:HE3	2.28	0.48
1:A:180:TYR:O	1:A:183:ALA:HB3	2.13	0.48

Continued on next page...

Continued from previous page...

Atom-1	Atom-2	Distance(Å)	Clash(Å)
1:B:277:SER:OG	1:B:327:ARG:HA	2.14	0.48
1:A:307:TYR:CE2	1:A:311:LEU:HD11	2.46	0.48
1:B:19:GLY:O	1:B:22:LYS:HG2	2.14	0.47
1:A:275:PHE:N	1:A:275:PHE:CD1	2.81	0.47
1:B:172:ILE:HG22	1:B:204:LEU:CD2	2.43	0.47
1:A:250:TYR:O	1:A:253:LYS:HD3	2.14	0.47
1:B:44:GLN:NE2	4:B:707:HOH:O	2.47	0.47
1:B:260:VAL:O	1:B:264:ILE:HG12	2.14	0.47
1:B:297:MET:N	1:B:297:MET:SD	2.88	0.47
1:B:250:TYR:CD2	1:B:309:TYR:HE2	2.32	0.47
1:A:171:GLN:HE21	1:A:171:GLN:HA	1.80	0.47
1:B:39:ASP:CB	1:B:102:THR:HG21	2.43	0.47
1:B:251:TYR:HD2	1:B:306:LEU:HD21	1.79	0.47
1:A:13:PRO:C	1:A:14:ILE:HG13	2.32	0.47
1:A:127:LEU:O	1:A:130:ASP:HB3	2.14	0.47
1:B:54:LEU:O	1:B:56:TYR:N	2.46	0.47
1:A:303:PHE:CZ	1:A:342:LEU:HB2	2.49	0.47
1:A:221:LYS:HE3	1:A:238:LEU:HD13	1.96	0.47
1:A:46:PHE:HB3	1:A:49:LYS:CG	2.44	0.47
1:B:172:ILE:HG21	1:B:204:LEU:HD22	1.93	0.47
1:A:54:LEU:C	1:A:56:TYR:H	2.17	0.47
1:B:224:ILE:HG22	1:B:235:ARG:HA	1.96	0.47
1:B:318:LYS:O	1:B:318:LYS:HG3	2.14	0.47
1:B:191:THR:O	1:B:194:ILE:HG22	2.14	0.47
1:A:277:SER:OG	1:A:327:ARG:HA	2.15	0.47
1:A:113:LEU:HD23	1:A:117:VAL:CG1	2.35	0.46
1:B:50:PHE:CE2	1:B:97:VAL:HG11	2.49	0.46
1:A:53:ILE:N	1:A:53:ILE:HD12	2.14	0.46
1:A:21:ILE:HD11	1:A:50:PHE:CE1	2.50	0.46
1:B:123:PRO:HB3	1:B:128:ALA:HB1	1.97	0.46
1:A:148:ILE:N	1:A:148:ILE:HD12	2.30	0.46
1:A:224:ILE:HG22	1:A:235:ARG:HA	1.98	0.46
1:A:32:ASP:C	1:A:33:GLN:HG3	2.36	0.46
1:A:265:ILE:O	1:A:269:ILE:HG13	2.16	0.46
1:A:127:LEU:HD11	1:A:256:HIS:HB3	1.98	0.46
1:A:9:SER:O	1:A:10:ASN:C	2.54	0.46
1:A:228:ASP:HB2	1:A:234:VAL:HG12	1.98	0.46
1:A:36:LEU:HD21	1:A:38:ILE:HB	1.97	0.46
1:B:126:ILE:HD12	1:B:172:ILE:HA	1.99	0.46
1:A:276:ASP:OD1	1:A:276:ASP:O	2.34	0.46
1:B:309:TYR:C	1:B:309:TYR:CD1	2.90	0.46
1:A:297:MET:SD	1:A:297:MET:N	2.88	0.46

Continued on next page...

Continued from previous page...

Atom-1	Atom-2	Distance(Å)	Clash(Å)
1:A:52:ASP:OD2	1:A:52:ASP:N	2.48	0.45
1:A:340:LEU:CD1	1:A:341:THR:N	2.80	0.45
1:A:94:ILE:C	1:A:95:ILE:HD12	2.37	0.45
1:A:266:TYR:HB2	1:A:349:LEU:HD22	1.99	0.45
1:B:275:PHE:N	1:B:275:PHE:CD1	2.83	0.45
1:A:201:ARG:HH21	1:A:205:GLN:HE22	1.63	0.45
1:B:113:LEU:O	1:B:117:VAL:HG13	2.17	0.45
1:B:270:VAL:HG22	1:B:341:THR:HG22	1.99	0.45
1:B:236:LYS:O	1:B:324:VAL:HG21	2.16	0.45
1:A:57:GLU:C	1:A:58:ASN:HD22	2.19	0.45
1:B:322:GLN:HB3	1:B:322:GLN:HE21	1.52	0.45
1:A:95:ILE:HG22	1:A:97:VAL:HG23	1.99	0.45
1:B:243:THR:HG21	1:B:323:MET:HG2	1.98	0.45
1:B:269:ILE:HD12	1:B:349:LEU:HB2	1.99	0.45
1:B:252:HIS:HE1	1:B:301:LEU:HA	1.81	0.45
1:A:147:LEU:C	1:A:148:ILE:HD12	2.38	0.45
1:B:46:PHE:HB3	1:B:49:LYS:HG3	1.99	0.45
1:B:267:GLN:HE21	1:B:267:GLN:HB3	1.58	0.45
1:B:252:HIS:HE1	1:B:301:LEU:HD23	1.81	0.44
1:A:37:LEU:HD13	1:A:94:ILE:HG23	1.99	0.44
1:A:125:THR:HG22	1:A:128:ALA:HB2	1.98	0.44
1:A:31:PHE:HE1	1:A:118:HIS:CD2	2.35	0.44
1:B:281:ILE:HG21	1:B:352:TYR:CZ	2.53	0.44
1:A:170:LYS:O	1:A:258:HIS:HE1	2.01	0.44
1:B:127:LEU:HD21	4:B:714:HOH:O	2.18	0.44
1:B:321:VAL:HG12	1:B:322:GLN:N	2.32	0.44
1:B:9:SER:O	1:B:10:ASN:C	2.56	0.44
1:A:322:GLN:NE2	1:A:334:VAL:HG12	2.32	0.44
1:B:168:PRO:O	1:B:172:ILE:HG12	2.17	0.44
1:A:126:ILE:HD12	1:A:172:ILE:HA	2.00	0.44
1:B:84:LEU:O	1:B:86:HIS:N	2.50	0.44
1:B:120:ILE:CD1	1:B:155:THR:HB	2.48	0.44
1:A:281:ILE:HG21	1:A:352:TYR:CZ	2.52	0.44
1:A:177:ALA:HB1	1:A:261:MET:HE2	1.99	0.44
1:A:84:LEU:O	1:A:86:HIS:N	2.51	0.44
1:B:147:LEU:HD12	1:B:147:LEU:HA	1.86	0.44
1:B:16:VAL:HG12	1:B:161:LEU:HD11	1.99	0.43
1:A:303:PHE:CD1	1:A:343:GLN:HA	2.53	0.43
1:B:52:ASP:OD2	1:B:52:ASP:N	2.50	0.43
1:A:172:ILE:HD12	1:A:207:LEU:HD21	2.01	0.43
1:B:192:GLN:O	1:B:196:GLN:HB2	2.18	0.43
1:B:224:ILE:HG12	1:B:224:ILE:H	1.67	0.43

Continued on next page...

Continued from previous page...

Atom-1	Atom-2	Distance(Å)	Clash(Å)
1:A:20:ALA:HB3	1:A:160:ASP:HA	2.00	0.43
1:B:20:ALA:HB3	1:B:160:ASP:HA	2.01	0.43
1:A:222:LEU:HD23	1:A:222:LEU:C	2.39	0.43
1:A:168:PRO:O	1:A:172:ILE:HG12	2.17	0.43
1:A:115:ARG:HH12	1:B:314:LYS:HE3	1.84	0.43
1:A:314:LYS:HE3	1:B:115:ARG:NH1	2.33	0.43
1:B:228:ASP:HB2	1:B:234:VAL:HG12	2.00	0.43
1:A:260:VAL:O	1:A:264:ILE:HG12	2.19	0.43
1:B:346:CYS:O	1:B:350:LYS:HD3	2.19	0.43
1:A:145:LYS:HE3	4:A:630:HOH:O	2.19	0.43
1:A:31:PHE:CE1	1:A:118:HIS:CD2	3.07	0.43
1:B:343:GLN:HE21	1:B:343:GLN:CA	2.28	0.43
1:A:125:THR:HG22	1:A:128:ALA:CB	2.48	0.43
1:B:125:THR:HG22	1:B:128:ALA:HB2	2.01	0.43
1:B:65:PRO:HD2	1:B:70:THR:OG1	2.18	0.43
1:A:199:LYS:O	1:A:290:GLN:NE2	2.52	0.43
1:B:340:LEU:CD1	1:B:341:THR:N	2.82	0.43
1:B:307:TYR:O	1:B:310:MET:HB2	2.18	0.43
1:B:18:HIS:ND1	1:B:162:ASP:OD1	2.52	0.43
1:A:13:PRO:HG2	1:A:156:ALA:HB1	2.00	0.43
1:B:322:GLN:NE2	1:B:334:VAL:HG12	2.34	0.43
1:A:141:SER:OG	1:A:142:LYS:N	2.52	0.43
1:A:303:PHE:CE1	1:A:343:GLN:HA	2.54	0.42
1:A:337:VAL:HG12	1:A:337:VAL:O	2.17	0.42
1:B:230:LYS:N	1:B:230:LYS:HD2	2.32	0.42
1:B:113:LEU:CD2	1:B:117:VAL:HG11	2.36	0.42
1:A:250:TYR:CD2	1:A:309:TYR:HE2	2.38	0.42
1:B:199:LYS:O	1:B:290:GLN:NE2	2.51	0.42
1:A:39:ASP:CB	1:A:42:VAL:HG23	2.48	0.42
1:B:84:LEU:C	1:B:86:HIS:N	2.73	0.42
1:B:277:SER:HB2	1:B:279:HIS:NE2	2.33	0.42
1:B:92:THR:HG22	1:B:93:ALA:N	2.34	0.42
1:B:271:ALA:HB1	1:B:326:MET:O	2.18	0.42
1:B:46:PHE:HB3	1:B:49:LYS:CG	2.50	0.42
1:B:39:ASP:CB	1:B:42:VAL:HG23	2.44	0.42
1:B:315:LYS:HE3	1:B:324:VAL:HG23	2.01	0.42
1:B:36:LEU:CD2	1:B:38:ILE:HB	2.50	0.42
1:A:191:THR:O	1:A:194:ILE:HG22	2.18	0.42
1:A:50:PHE:O	1:A:54:LEU:CB	2.67	0.42
1:B:36:LEU:O	1:B:36:LEU:HD23	2.19	0.42
1:B:185:LEU:CD1	1:B:240:LEU:CD2	2.91	0.42
1:A:343:GLN:HE21	1:A:343:GLN:CA	2.24	0.42

Continued on next page...

Continued from previous page...

Atom-1	Atom-2	Distance(Å)	Clash(Å)
1:B:275:PHE:CD2	1:B:327:ARG:HG3	2.54	0.42
1:A:36:LEU:HD23	1:A:36:LEU:O	2.20	0.42
1:A:236:LYS:O	1:A:324:VAL:HG21	2.20	0.42
1:A:224:ILE:HG12	1:A:224:ILE:H	1.64	0.42
1:B:307:TYR:CD2	1:B:307:TYR:C	2.93	0.42
1:B:22:LYS:HG3	1:B:23:TYR:N	2.35	0.42
1:A:129:HIS:HE1	1:A:178:GLU:HB2	1.85	0.42
1:A:222:LEU:O	1:A:226:VAL:HG23	2.20	0.42
1:A:147:LEU:HA	1:A:147:LEU:HD12	1.85	0.42
1:B:96:ALA:O	1:B:122:VAL:HB	2.19	0.42
1:B:340:LEU:HD13	1:B:340:LEU:C	2.41	0.41
1:B:303:PHE:CZ	1:B:342:LEU:HB2	2.55	0.41
1:B:22:LYS:HE3	1:B:23:TYR:CZ	2.55	0.41
1:A:84:LEU:C	1:A:86:HIS:N	2.74	0.41
1:B:119:PHE:O	1:B:155:THR:N	2.52	0.41
1:B:222:LEU:C	1:B:222:LEU:HD23	2.40	0.41
1:B:7:TYR:HB2	1:B:11:ASN:OD1	2.21	0.41
1:B:145:LYS:HD3	1:B:246:HIS:CD2	2.55	0.41
1:B:350:LYS:C	1:B:352:TYR:N	2.73	0.41
1:B:181:LYS:NZ	4:B:647:HOH:O	2.49	0.41
1:A:286:GLN:HE21	1:A:286:GLN:HB2	1.62	0.41
1:A:340:LEU:HD13	1:A:340:LEU:C	2.41	0.41
1:A:50:PHE:CE2	1:A:97:VAL:HG11	2.55	0.41
1:B:125:THR:HG22	1:B:128:ALA:CB	2.51	0.41
1:B:95:ILE:CD1	1:B:95:ILE:N	2.84	0.41
1:A:126:ILE:HG13	1:A:167:LEU:CD1	2.51	0.41
1:A:228:ASP:CB	1:A:234:VAL:HG12	2.51	0.41
1:B:196:GLN:O	1:B:199:LYS:HG2	2.21	0.41
1:A:316:ASN:HB3	1:A:320:GLY:O	2.21	0.41
1:A:271:ALA:HB1	1:A:326:MET:O	2.20	0.41
1:A:350:LYS:C	1:A:352:TYR:N	2.74	0.41
1:A:19:GLY:O	1:A:22:LYS:HG2	2.21	0.41
1:A:119:PHE:O	1:A:155:THR:N	2.50	0.41
1:A:192:GLN:O	1:A:196:GLN:HB2	2.21	0.41
1:B:48:ASN:O	1:B:49:LYS:C	2.59	0.40
1:B:265:ILE:O	1:B:269:ILE:HG13	2.22	0.40
1:A:318:LYS:HG3	1:A:318:LYS:O	2.21	0.40
1:B:48:ASN:O	1:B:50:PHE:N	2.54	0.40
1:A:302:ASP:O	1:A:306:LEU:HG	2.21	0.40
1:B:246:HIS:HE1	3:B:501:CRB:O91	2.04	0.40
1:A:297:MET:CE	1:A:298:ILE:HG12	2.52	0.40
1:A:244:PHE:O	1:A:248:VAL:HG23	2.21	0.40

Continued on next page...

Continued from previous page...

Atom-1	Atom-2	Distance(Å)	Clash(Å)
1:A:128:ALA:HA	1:A:131:SER:OG	2.21	0.40
1:A:126:ILE:HG13	1:A:167:LEU:HD13	2.03	0.40
1:A:113:LEU:O	1:A:117:VAL:HG13	2.21	0.40
1:B:50:PHE:O	1:B:54:LEU:CB	2.69	0.40
1:B:53:ILE:H	1:B:53:ILE:HD13	1.85	0.40
1:A:307:TYR:CD2	1:A:307:TYR:C	2.95	0.40

There are no symmetry-related clashes.

5.3 Torsion angles

5.3.1 Protein backbone ⓘ

In the following table, the Percentiles column shows the percent Ramachandran outliers of the chain as a percentile score with respect to all X-ray entries followed by that with respect to entries of similar resolution. The Analysed column shows the number of residues for which the backbone conformation was analysed, and the total number of residues.

Mol	Chain	Analysed	Favoured	Allowed	Outliers	Percentiles	
1	A	350/354 (99%)	292 (83%)	46 (13%)	12 (3%)	6	3
1	B	350/354 (99%)	287 (82%)	51 (15%)	12 (3%)	6	3
All	All	700/708 (99%)	579 (83%)	97 (14%)	24 (3%)	6	3

All (24) Ramachandran outliers are listed below:

Mol	Chain	Res	Type
1	A	30	GLN
1	B	10	ASN
1	A	10	ASN
1	A	85	SER
1	A	338	ASP
1	A	339	GLN
1	B	85	SER
1	A	68	GLU
1	A	294	PRO
1	A	340	LEU
1	B	28	LEU
1	B	294	PRO
1	B	338	ASP
1	B	339	GLN

Continued on next page...

Continued from previous page...

Mol	Chain	Res	Type
1	B	340	LEU
1	A	28	LEU
1	B	49	LYS
1	B	55	SER
1	B	68	GLU
1	A	55	SER
1	B	337	VAL
1	A	88	VAL
1	B	88	VAL
1	A	337	VAL

5.3.2 Protein sidechains ⓘ

In the following table, the Percentiles column shows the percent sidechain outliers of the chain as a percentile score with respect to all X-ray entries followed by that with respect to entries of similar resolution. The Analysed column shows the number of residues for which the sidechain conformation was analysed, and the total number of residues.

Mol	Chain	Analysed	Rotameric	Outliers	Percentiles	
1	A	304/306 (99%)	279 (92%)	25 (8%)	17	19
1	B	304/306 (99%)	280 (92%)	24 (8%)	18	21
All	All	608/612 (99%)	559 (92%)	49 (8%)	17	20

All (49) residues with a non-rotameric sidechain are listed below:

Mol	Chain	Res	Type
1	A	21	ILE
1	A	30	GLN
1	A	52	ASP
1	A	53	ILE
1	A	83	ILE
1	A	120	ILE
1	A	143	GLN
1	A	147	LEU
1	A	159	TYR
1	A	166	THR
1	A	185	LEU
1	A	204	LEU
1	A	230	LYS
1	A	252	HIS
1	A	267	GLN

Continued on next page...

Continued from previous page...

Mol	Chain	Res	Type
1	A	275	PHE
1	A	297	MET
1	A	298	ILE
1	A	305	THR
1	A	307	TYR
1	A	309	TYR
1	A	316	ASN
1	A	322	GLN
1	A	333	VAL
1	A	343	GLN
1	B	21	ILE
1	B	30	GLN
1	B	52	ASP
1	B	53	ILE
1	B	83	ILE
1	B	120	ILE
1	B	143	GLN
1	B	147	LEU
1	B	159	TYR
1	B	166	THR
1	B	185	LEU
1	B	204	LEU
1	B	230	LYS
1	B	265	ILE
1	B	267	GLN
1	B	275	PHE
1	B	297	MET
1	B	298	ILE
1	B	305	THR
1	B	307	TYR
1	B	322	GLN
1	B	333	VAL
1	B	338	ASP
1	B	343	GLN

Some sidechains can be flipped to improve hydrogen bonding and reduce clashes. All (29) such sidechains are listed below:

Mol	Chain	Res	Type
1	A	30	GLN
1	A	33	GLN
1	A	58	ASN
1	A	77	GLN

Continued on next page...

Continued from previous page...

Mol	Chain	Res	Type
1	A	118	HIS
1	A	143	GLN
1	A	171	GLN
1	A	186	ASN
1	A	205	GLN
1	A	246	HIS
1	A	286	GLN
1	A	290	GLN
1	A	322	GLN
1	A	343	GLN
1	A	344	HIS
1	B	33	GLN
1	B	58	ASN
1	B	77	GLN
1	B	143	GLN
1	B	171	GLN
1	B	205	GLN
1	B	246	HIS
1	B	252	HIS
1	B	286	GLN
1	B	290	GLN
1	B	322	GLN
1	B	335	GLN
1	B	343	GLN
1	B	344	HIS

5.3.3 RNA ⓘ

There are no RNA chains in this entry.

5.4 Non-standard residues in protein, DNA, RNA chains ⓘ

There are no non-standard protein/DNA/RNA residues in this entry.

5.5 Carbohydrates ⓘ

There are no carbohydrates in this entry.

5.6 Ligand geometry

Of 4 ligands modelled in this entry, 2 are monoatomic - leaving 2 for Mogul analysis.

In the following table, the Counts columns list the number of bonds (or angles) for which Mogul statistics could be retrieved, the number of bonds (or angles) that are observed in the model and the number of bonds (or angles) that are defined in the chemical component dictionary. The Link column lists molecule types, if any, to which the group is linked. The Z score for a bond length (or angle) is the number of standard deviations the observed value is removed from the expected value. A bond length (or angle) with $|Z| > 2$ is considered an outlier worth inspection. RMSZ is the root-mean-square of all Z scores of the bond lengths (or angles).

Mol	Type	Chain	Res	Link	Bond lengths			Bond angles		
					Counts	RMSZ	# $ Z > 2$	Counts	RMSZ	# $ Z > 2$
3	CRB	A	500	2	17,17,17	1.83	3 (17%)	27,27,27	1.52	4 (14%)
3	CRB	B	501	2	17,17,17	1.97	3 (17%)	27,27,27	1.71	4 (14%)

In the following table, the Chirals column lists the number of chiral outliers, the number of chiral centers analysed, the number of these observed in the model and the number defined in the chemical component dictionary. Similar counts are reported in the Torsion and Rings columns. '-' means no outliers of that kind were identified.

Mol	Type	Chain	Res	Link	Chirals	Torsions	Rings
3	CRB	A	500	2	-	0/11/29/29	0/1/1/1
3	CRB	B	501	2	-	0/11/29/29	0/1/1/1

All (6) bond length outliers are listed below:

Mol	Chain	Res	Type	Atoms	Z	Observed(Å)	Ideal(Å)
3	B	501	CRB	P1-C7	4.73	1.84	1.79
3	A	500	CRB	C4-C5	4.35	1.58	1.52
3	B	501	CRB	C4-C5	3.83	1.57	1.52
3	A	500	CRB	P1-C7	3.39	1.82	1.79
3	B	501	CRB	C8-C6	-3.28	1.46	1.53
3	A	500	CRB	C8-C6	-3.15	1.46	1.53

All (8) bond angle outliers are listed below:

Mol	Chain	Res	Type	Atoms	Z	Observed(°)	Ideal(°)
3	B	501	CRB	C6-C5-C4	-3.94	107.79	112.80
3	A	500	CRB	C8-C2-C1	-3.47	102.99	110.49
3	B	501	CRB	C8-C2-C1	-3.28	103.39	110.49
3	A	500	CRB	C6-C5-C4	-3.24	108.67	112.80
3	B	501	CRB	C7-C6-C5	3.14	117.55	113.60

Continued on next page...

Continued from previous page...

Mol	Chain	Res	Type	Atoms	Z	Observed(°)	Ideal(°)
3	B	501	CRB	C8-C2-C3	2.82	112.92	110.22
3	A	500	CRB	O92-P1-C7	-2.19	101.65	106.86
3	A	500	CRB	C7-C6-C5	2.14	116.29	113.60

There are no chirality outliers.

There are no torsion outliers.

There are no ring outliers.

5.7 Other polymers ⓘ

There are no such residues in this entry.

5.8 Polymer linkage issues

There are no chain breaks in this entry.

6 Fit of model and data ⓘ

6.1 Protein, DNA and RNA chains ⓘ

In the following table, the column labelled ‘#RSRZ> 2’ contains the number (and percentage) of RSRZ outliers, followed by percent RSRZ outliers for the chain as percentile scores relative to all X-ray entries and entries of similar resolution. The OWAB column contains the minimum, median, 95th percentile and maximum values of the occupancy-weighted average B-factor per residue. The column labelled ‘Q< 0.9’ lists the number of (and percentage) of residues with an average occupancy less than 0.9.

Mol	Chain	Analysed	<RSRZ>	#RSRZ>2		OWAB(Å ²)	Q<0.9
1	A	352/354 (99%)	-0.08	11 (3%)	47 56	22, 55, 109, 132	0
1	B	352/354 (99%)	-0.10	9 (2%)	53 63	23, 54, 108, 131	0
All	All	704/708 (99%)	-0.09	20 (2%)	50 60	22, 54, 109, 132	0

All (20) RSRZ outliers are listed below:

Mol	Chain	Res	Type	RSRZ
1	A	53	ILE	4.4
1	B	53	ILE	4.4
1	A	251	TYR	4.1
1	A	340	LEU	4.0
1	B	47	ALA	3.8
1	B	251	TYR	3.8
1	B	28	LEU	3.6
1	A	318	LYS	3.5
1	A	47	ALA	3.5
1	B	340	LEU	3.4
1	B	352	TYR	3.0
1	A	344	HIS	3.0
1	B	318	LYS	2.9
1	A	352	TYR	2.4
1	A	52	ASP	2.4
1	B	337	VAL	2.3
1	B	344	HIS	2.2
1	A	349	LEU	2.2
1	A	28	LEU	2.2
1	A	303	PHE	2.2

6.2 Non-standard residues in protein, DNA, RNA chains ⓘ

There are no non-standard protein/DNA/RNA residues in this entry.

6.3 Carbohydrates ⓘ

There are no carbohydrates in this entry.

6.4 Ligands ⓘ

In the following table, the Atoms column lists the number of modelled atoms in the group and the number defined in the chemical component dictionary. LLDF column lists the quality of electron density of the group with respect to its neighbouring residues in protein, DNA or RNA chains. The B-factors column lists the minimum, median, 95th percentile and maximum values of B factors of atoms in the group. The column labelled 'Q< 0.9' lists the number of atoms with occupancy less than 0.9.

Mol	Type	Chain	Res	Atoms	RSR	LLDF	B-factors(Å ²)	Q<0.9
2	ZN	A	600	1/1	0.14	5.24	37,37,37,37	0
2	ZN	B	601	1/1	0.12	2.15	34,34,34,34	0
3	CRB	A	500	17/17	0.10	0.16	28,46,56,61	0
3	CRB	B	501	17/17	0.08	-1.05	27,42,54,54	0

6.5 Other polymers ⓘ

There are no such residues in this entry.