



# Full wwPDB X-ray Structure Validation Report

Feb 28, 2014 – 07:20 AM GMT

PDB ID : 2XAM  
Title : Inositol 1,3,4,5,6-pentakisphosphate2-kinase from *A. thaliana* in complex with ADP and IP6.  
Authors : Gonzalez, B.; Banos-Sanz, J.I.; Villate, M.; Brearley, C.A.; Sanz- Aparicio, J.  
Deposited on : 2010-03-31  
Resolution : 2.20 Å(reported)

This is a full wwPDB validation report for a publicly released PDB entry.  
We welcome your comments at [validation@mail.wwpdb.org](mailto:validation@mail.wwpdb.org)  
A user guide is available at <http://wwpdb.org/ValidationPDFNotes.html>

---

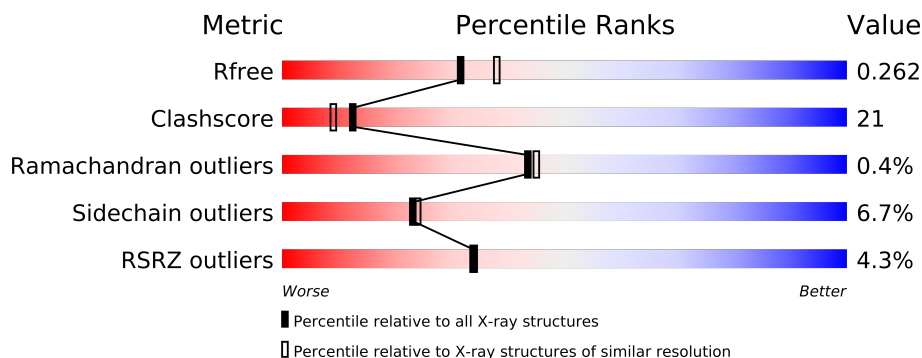
The following versions of software and data (see [references](#)) were used in the production of this report:

MolProbity : 4.02b-467  
Mogul : 1.15 2013  
Xtriage (Phenix) : dev-1323  
EDS : stable22639  
Percentile statistics : 21963  
Refmac : 5.8.0049  
CCP4 : 6.3.0 (Settle)  
Ideal geometry (proteins) : Engh & Huber (2001)  
Ideal geometry (DNA, RNA) : Parkinson et. al. (1996)  
Validation Pipeline (wwPDB-VP) : stable22683

# 1 Overall quality at a glance

The reported resolution of this entry is 2.20 Å.

Percentile scores (ranging between 0-100) for global validation metrics of the entry are shown in the following graphic. The table shows the number of entries on which the scores are based.



Metric	Whole archive (#Entries)	Similar resolution (#Entries, resolution range(Å))
$R_{free}$	66092	2938 (2.20-2.20)
Clashscore	79885	3751 (2.20-2.20)
Ramachandran outliers	78287	3681 (2.20-2.20)
Sidechain outliers	78261	3682 (2.20-2.20)
RSRZ outliers	66119	2939 (2.20-2.20)

The table below summarises the geometric issues observed across the polymeric chains and their fit to the electron density. The red, orange, yellow and green segments on the lower bar indicate the fraction of residues that contain outliers for  $\geq 3$ , 2, 1 and 0 types of geometric quality criteria. The upper red bar (where present) indicates the fraction of residues that have poor fit to the electron density.

Mol	Chain	Length	Quality of chain
1	A	451	
1	B	451	

The following table lists non-polymeric compounds that are outliers for geometric or electron-density-fit criteria:

Mol	Type	Chain	Res	Geometry	Electron density
5	MG	B	1031	-	X

## 2 Entry composition

There are 6 unique types of molecules in this entry. The entry contains 7013 atoms, of which 0 are hydrogen and 0 are deuterium.

In the tables below, the ZeroOcc column contains the number of atoms modelled with zero occupancy, the AltConf column contains the number of residues with at least one atom in alternate conformation and the Trace column contains the number of residues modelled with at most 2 atoms.

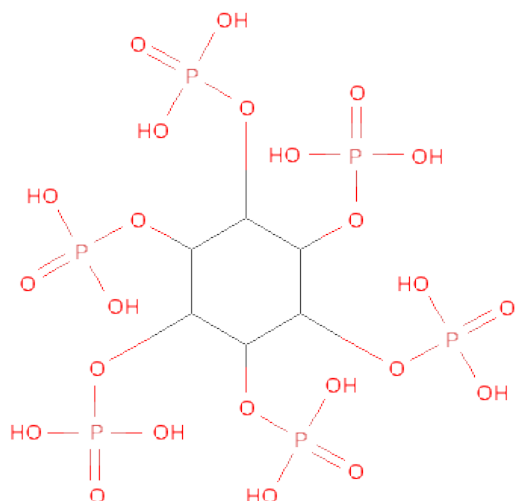
- Molecule 1 is a protein called INOSITOL-PENTAKISPHOSPHATE2-KINASE.

Mol	Chain	Residues	Atoms					ZeroOcc	AltConf	Trace
1	A	417	Total	C	N	O	S	0	0	0
			3314	2104	561	636	13			
1	B	426	Total	C	N	O	S	0	0	0
			3380	2146	576	645	13			

There are 16 discrepancies between the modelled and reference sequences:

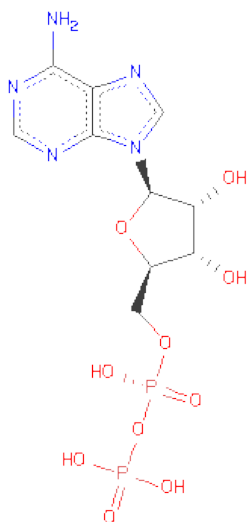
Chain	Residue	Modelled	Actual	Comment	Reference
A	54	SER	ALA	SEE REMARK 999	UNP Q93YN9
A	90	GLN	LYS	SEE REMARK 999	UNP Q93YN9
A	157	THR	SER	SEE REMARK 999	UNP Q93YN9
A	204	ILE	ASN	SEE REMARK 999	UNP Q93YN9
A	224	ARG	SER	SEE REMARK 999	UNP Q93YN9
A	321	CYS	SER	SEE REMARK 999	UNP Q93YN9
A	325	ILE	LEU	SEE REMARK 999	UNP Q93YN9
A	337	ARG	LYS	SEE REMARK 999	UNP Q93YN9
B	54	SER	ALA	SEE REMARK 999	UNP Q93YN9
B	90	GLN	LYS	SEE REMARK 999	UNP Q93YN9
B	157	THR	SER	SEE REMARK 999	UNP Q93YN9
B	204	ILE	ASN	SEE REMARK 999	UNP Q93YN9
B	224	ARG	SER	SEE REMARK 999	UNP Q93YN9
B	321	CYS	SER	SEE REMARK 999	UNP Q93YN9
B	325	ILE	LEU	SEE REMARK 999	UNP Q93YN9
B	337	ARG	LYS	SEE REMARK 999	UNP Q93YN9

- Molecule 2 is INOSITOL 1,2,3,4,5,6-HEXAKISPHOSPHATE (three-letter code: I6P) (formula: C<sub>6</sub>H<sub>18</sub>O<sub>24</sub>P<sub>6</sub>).



Mol	Chain	Residues	Atoms				ZeroOcc	AltConf
2	A	1	Total	C	O	P	0	0
			36	6	24	6		
2	B	1	Total	C	O	P	0	0
			36	6	24	6		

- Molecule 3 is ADENOSINE-5'-DIPHOSPHATE (three-letter code: ADP) (formula:  $C_{10}H_{15}N_5O_{10}P_2$ ).



Mol	Chain	Residues	Atoms					ZeroOcc	AltConf
3	A	1	Total	C	N	O	P	0	0
			27	10	5	10	2		

*Continued on next page...*

*Continued from previous page...*

Mol	Chain	Residues	Atoms					ZeroOcc	AltConf
3	B	1	Total	C	N	O	P	0	0
			27	10	5	10	2		

- Molecule 4 is ZINC ION (three-letter code: ZN) (formula: Zn).

Mol	Chain	Residues	Atoms		ZeroOcc	AltConf
4	B	1	Total	Zn	0	0
			1	1		
4	A	1	Total	Zn	0	0
			1	1		

- Molecule 5 is MAGNESIUM ION (three-letter code: MG) (formula: Mg).

Mol	Chain	Residues	Atoms		ZeroOcc	AltConf
5	B	2	Total	Mg	0	0
			2	2		
5	A	2	Total	Mg	0	0
			2	2		

- Molecule 6 is water.

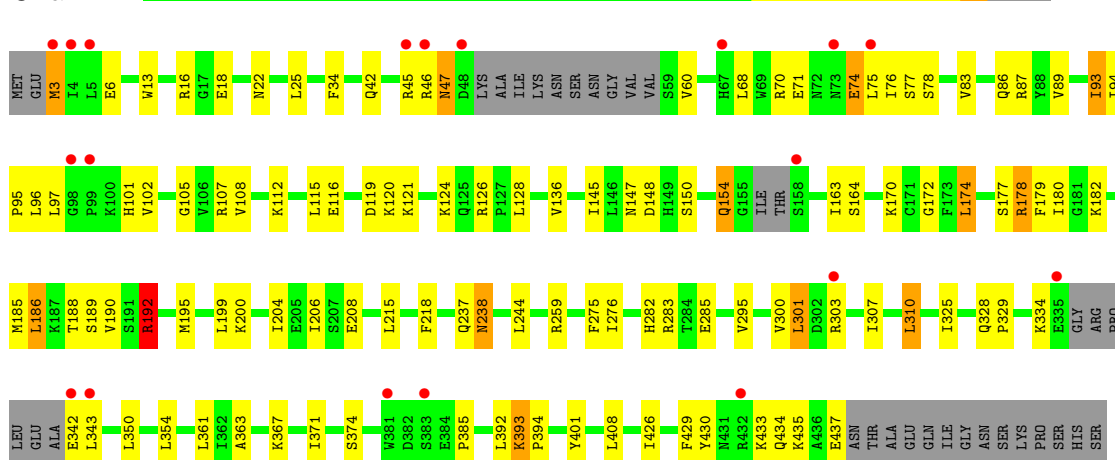
Mol	Chain	Residues	Atoms		ZeroOcc	AltConf
6	A	90	Total	O	0	0
			90	90		
6	B	97	Total	O	0	0
			97	97		

### 3 Residue-property plots

These plots are drawn for all protein, RNA and DNA chains in the entry. The first graphic for a chain summarises the proportions of errors displayed in the second graphic. The second graphic shows the sequence view annotated by issues in geometry and electron density. Residues are color-coded according to the number of geometric quality criteria for which they contain at least one outlier: green = 0, yellow = 1, orange = 2 and red = 3 or more. A red dot above a residue indicates a poor fit to the electron density ( $RSRZ > 2$ ). Stretches of 2 or more consecutive residues without any outlier are shown as a green connector. Residues present in the sample, but not in the model, are shown in grey.

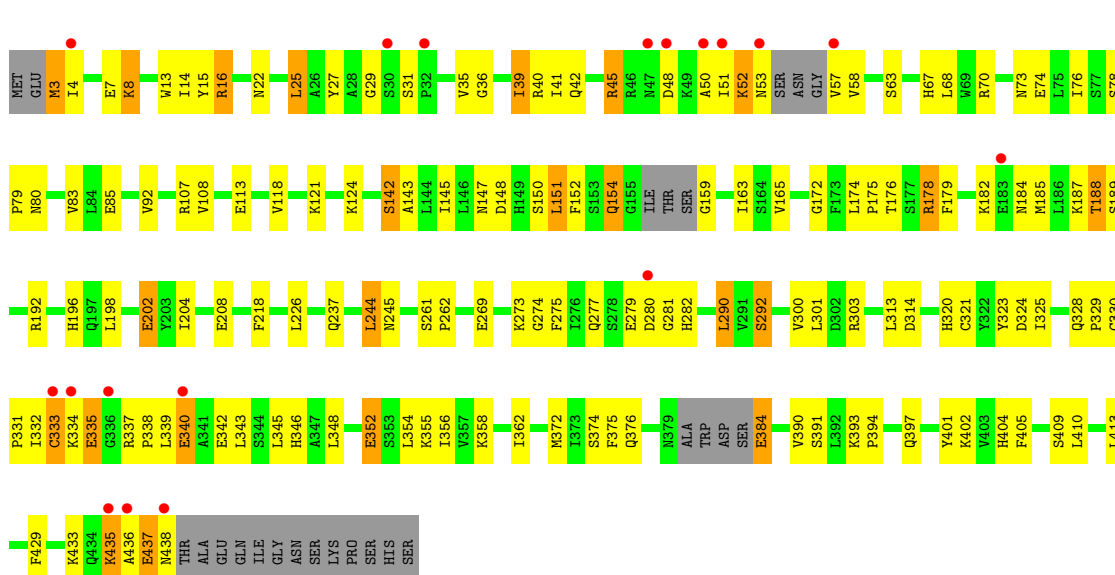
#### • Molecule 1: INOSITOL-PENTAKISPHOSPHATE2-KINASE

Chain A:



#### • Molecule 1: INOSITOL-PENTAKISPHOSPHATE2-KINASE

Chain B:



## 4 Data and refinement statistics

Property	Value	Source
Space group	P 21 21 21	Depositor
Cell constants a, b, c, $\alpha$ , $\beta$ , $\gamma$	58.12Å 113.59Å 142.48Å 90.00° 90.00° 90.00°	Depositor
Resolution (Å)	88.74 – 2.20 71.24 – 2.20	Depositor EDS
% Data completeness (in resolution range)	99.8 (88.74-2.20) 99.8 (71.24-2.20)	Depositor EDS
$R_{merge}$	0.14	Depositor
$R_{sym}$	(Not available)	Depositor
$\langle I/\sigma(I) \rangle$ <sup>1</sup>	2.32 (at 2.20Å)	Xtriage
Refinement program	REFMAC 5.5.0066	Depositor
R, $R_{free}$	0.227 , 0.270 0.226 , 0.262	Depositor DCC
$R_{free}$ test set	2474 reflections (5.36%)	DCC
Wilson B-factor (Å <sup>2</sup> )	31.9	Xtriage
Anisotropy	0.176	Xtriage
Bulk solvent $k_{sol}$ (e/Å <sup>3</sup> ), $B_{sol}$ (Å <sup>2</sup> )	0.35 , 20.9	EDS
Estimated twinning fraction	No twinning to report.	Xtriage
L-test for twinning	$\langle  L  \rangle = 0.48$ , $\langle L^2 \rangle = 0.31$	Xtriage
Outliers	1 of 48621 reflections (0.002%)	Xtriage
$F_o, F_c$ correlation	0.92	EDS
Total number of atoms	7013	wwPDB-VP
Average B, all atoms (Å <sup>2</sup> )	23.0	wwPDB-VP

Xtriage's analysis on translational NCS is as follows: *The largest off-origin peak in the Patterson function is 15.85% of the height of the origin peak. No significant pseudotranslation is detected.*

<sup>1</sup>Intensities estimated from amplitudes.

## 5 Model quality

### 5.1 Standard geometry

Bond lengths and bond angles in the following residue types are not validated in this section: ZN, I6P, MG, ADP

The Z score for a bond length (or angle) is the number of standard deviations the observed value is removed from the expected value. A bond length (or angle) with  $|Z| > 5$  is considered an outlier worth inspection. RMSZ is the root-mean-square of all Z scores of the bond lengths (or angles).

Mol	Chain	Bond lengths		Bond angles	
		RMSZ	$\# Z  > 5$	RMSZ	$\# Z  > 5$
1	A	0.36	0/3375	0.54	1/4549 (0.0%)
1	B	0.38	0/3440	0.54	0/4635
All	All	0.37	0/6815	0.54	1/9184 (0.0%)

There are no bond length outliers.

All (1) bond angle outliers are listed below:

Mol	Chain	Res	Type	Atoms	Z	Observed(°)	Ideal(°)
1	A	192	ARG	NE-CZ-NH2	-5.20	117.70	120.30

There are no chirality outliers.

There are no planarity outliers.

### 5.2 Close contacts

In the following table, the Non-H and H(model) columns list the number of non-hydrogen atoms and hydrogen atoms in the chain respectively. The H(added) column lists the number of hydrogens added by MolProbity. The Clashes column lists the number of clashes within the asymmetric unit, and the number in parentheses is this value normalized per 1000 atoms of the molecule in the chain. The Symm-Clashes column gives symmetry related clashes, in the same way as for the Clashes column.

Mol	Chain	Non-H	H(model)	H(added)	Clashes	Symm-Clashes
1	A	3314	0	3312	133	0
1	B	3380	0	3400	167	0
2	A	36	0	6	1	0
2	B	36	0	6	1	0
3	A	27	0	12	0	0
3	B	27	0	12	0	0

*Continued on next page...*



*Continued from previous page...*

Mol	Chain	Non-H	H(model)	H(added)	Clashes	Symm-Clashes
4	A	1	0	0	0	0
4	B	1	0	0	0	0
5	A	2	0	0	0	0
5	B	2	0	0	0	0
6	A	90	0	0	9	0
6	B	97	0	0	6	0
All	All	7013	0	6748	286	0

Clashscore is defined as the number of clashes calculated for the entry per 1000 atoms (including hydrogens) of the entry. The overall clashscore for this entry is 21.

All (286) close contacts within the same asymmetric unit are listed below.

Atom-1	Atom-2	Distance(Å)	Clash(Å)
1:A:46:ARG:NH1	1:B:182:LYS:HG3	1.47	1.29
1:B:348:LEU:CD2	1:B:352:GLU:HG2	1.68	1.22
1:A:46:ARG:HH12	1:B:182:LYS:CG	1.56	1.18
1:A:204:ILE:HD12	1:B:345:LEU:HD21	1.24	1.17
1:A:3:MET:HA	1:A:3:MET:CE	1.76	1.14
1:A:3:MET:HA	1:A:3:MET:HE2	1.24	1.10
1:A:178:ARG:HH11	1:A:178:ARG:CG	1.62	1.10
1:B:204:ILE:HG22	1:B:204:ILE:O	1.52	1.10
1:A:204:ILE:CD1	1:B:345:LEU:CD2	2.33	1.06
1:A:178:ARG:HH11	1:A:178:ARG:HG3	1.18	1.04
1:B:178:ARG:CG	1:B:178:ARG:HH11	1.73	1.02
1:A:393:LYS:CA	1:A:393:LYS:HE2	1.86	1.02
1:A:204:ILE:HD13	1:B:345:LEU:HD23	1.39	1.01
1:B:178:ARG:HG3	1:B:178:ARG:HH11	1.21	0.99
1:A:393:LYS:HA	1:A:393:LYS:CE	1.91	0.99
1:A:147:ASN:ND2	1:A:154:GLN:HE21	1.61	0.99
1:A:199:LEU:HD22	1:A:426:ILE:HD13	1.45	0.98
1:A:393:LYS:HE2	1:A:393:LYS:HA	0.99	0.98
1:A:204:ILE:CD1	1:B:345:LEU:HD21	1.94	0.97
1:A:154:GLN:HA	1:A:154:GLN:OE1	1.62	0.96
1:B:340:GLU:HA	1:B:340:GLU:OE1	1.65	0.96
1:B:14:ILE:HD12	1:B:15:TYR:H	1.31	0.95
1:B:348:LEU:CD2	1:B:352:GLU:CG	2.44	0.94
1:A:74:GLU:OE1	1:A:74:GLU:N	2.00	0.93
1:B:348:LEU:CG	1:B:352:GLU:HG2	1.99	0.92
1:B:348:LEU:HD23	1:B:352:GLU:HG2	1.50	0.91
1:B:204:ILE:O	1:B:204:ILE:CG2	2.19	0.90
1:B:39:ILE:HD12	1:B:41:ILE:HG13	1.52	0.89
1:A:393:LYS:HB2	1:A:394:PRO:HD3	1.55	0.88

*Continued on next page...*

*Continued from previous page...*

Atom-1	Atom-2	Distance(Å)	Clash(Å)
1:A:178:ARG:NH1	1:A:178:ARG:HG3	1.87	0.86
1:B:384:GLU:N	1:B:384:GLU:OE2	2.08	0.86
1:B:348:LEU:HD23	1:B:352:GLU:CG	2.05	0.86
1:A:275:PHE:HD1	1:A:276:ILE:CD1	1.87	0.86
1:B:178:ARG:NH1	1:B:178:ARG:HG3	1.82	0.86
1:A:204:ILE:CD1	1:B:345:LEU:HD23	1.99	0.86
1:A:204:ILE:HD12	1:B:345:LEU:CD2	1.97	0.86
1:A:200:LYS:HE3	6:A:2087:HOH:O	1.77	0.85
1:A:147:ASN:HD22	1:A:154:GLN:HE21	1.25	0.84
1:B:176:THR:HG22	1:B:176:THR:O	1.76	0.83
1:B:39:ILE:HD11	1:B:143:ALA:HB1	1.59	0.83
1:B:8:LYS:HD2	1:B:8:LYS:H	1.44	0.83
1:B:348:LEU:HG	1:B:352:GLU:HG2	1.63	0.81
1:B:52:LYS:HG3	1:B:57:VAL:N	1.95	0.81
1:A:94:ILE:HB	1:A:95:PRO:HD3	1.62	0.81
2:B:500:I6P:O32	2:B:500:I6P:O23	1.97	0.80
1:B:435:LYS:NZ	1:B:438:ASN:HD22	1.78	0.80
1:A:76:ILE:HD12	1:A:77:SER:N	1.96	0.80
1:A:18:GLU:OE1	1:A:126:ARG:HG2	1.80	0.80
1:A:199:LEU:HD22	1:A:426:ILE:CD1	2.12	0.80
1:B:85:GLU:OE2	1:B:409:SER:HA	1.82	0.80
1:A:429:PHE:CZ	1:A:433:LYS:HE3	2.17	0.80
1:A:16:ARG:NH2	1:A:148:ASP:OD1	2.15	0.79
1:B:163:ILE:HD13	1:B:275:PHE:CG	2.18	0.79
1:A:147:ASN:ND2	1:A:154:GLN:NE2	2.30	0.78
1:B:52:LYS:HG2	1:B:53:ASN:N	1.97	0.78
1:A:275:PHE:HD1	1:A:276:ILE:HD12	1.48	0.77
1:B:52:LYS:HB2	1:B:57:VAL:C	2.05	0.77
1:A:393:LYS:HB2	1:A:394:PRO:CD	2.15	0.76
1:A:101:HIS:HD2	1:A:303:ARG:HH22	1.32	0.76
1:B:39:ILE:HD12	1:B:41:ILE:CG1	2.16	0.76
1:B:85:GLU:OE2	1:B:410:LEU:N	2.19	0.75
1:B:337:ARG:HD2	1:B:338:PRO:HD2	1.67	0.75
1:B:39:ILE:HD13	1:B:40:ARG:N	2.02	0.75
1:B:348:LEU:HD21	1:B:352:GLU:HG2	1.68	0.75
1:B:39:ILE:CD1	1:B:41:ILE:HG13	2.16	0.75
1:B:163:ILE:HD13	1:B:275:PHE:CD1	2.22	0.74
1:B:108:VAL:HG11	1:B:145:ILE:HD11	1.70	0.73
1:A:178:ARG:HH11	1:A:178:ARG:HG2	1.53	0.73
1:B:108:VAL:HG11	1:B:145:ILE:CD1	2.18	0.72
1:A:147:ASN:HD22	1:A:154:GLN:NE2	1.86	0.72
1:B:176:THR:CG2	1:B:176:THR:O	2.38	0.71

*Continued on next page...*

*Continued from previous page...*

Atom-1	Atom-2	Distance(Å)	Clash(Å)
1:A:350:LEU:CD1	1:A:354:LEU:HD11	2.20	0.71
1:B:184:ASN:O	1:B:187:LYS:HG2	1.90	0.71
1:B:80:ASN:OD1	1:B:83:VAL:HG12	1.91	0.71
1:A:3:MET:CE	1:A:3:MET:CA	2.62	0.71
1:B:277:GLN:H	1:B:397:GLN:HE22	1.38	0.71
1:B:39:ILE:HD11	1:B:143:ALA:CB	2.21	0.70
1:B:3:MET:HA	1:B:3:MET:CE	2.22	0.70
1:A:275:PHE:CD1	1:A:276:ILE:HD12	2.27	0.69
1:B:335:GLU:HA	1:B:335:GLU:OE2	1.91	0.69
1:A:208:GLU:OE1	1:A:259:ARG:NE	2.23	0.69
1:B:178:ARG:CB	1:B:178:ARG:HH11	2.05	0.69
1:A:101:HIS:CD2	1:A:303:ARG:HH22	2.11	0.68
1:A:350:LEU:HD13	1:A:354:LEU:CD1	2.22	0.68
1:A:124:LYS:CB	6:A:2017:HOH:O	2.41	0.68
1:A:47:ASN:HA	1:B:188:THR:CG2	2.24	0.68
1:B:16:ARG:NH2	1:B:148:ASP:OD1	2.27	0.68
1:B:31:SER:O	1:B:35:VAL:HG23	1.94	0.68
1:A:89:VAL:O	1:A:94:ILE:HG12	1.95	0.67
1:B:435:LYS:HZ2	1:B:438:ASN:HD22	1.42	0.67
1:B:348:LEU:HD21	1:B:352:GLU:CG	2.23	0.67
1:A:192:ARG:NH2	6:A:2030:HOH:O	2.27	0.67
1:A:16:ARG:NH2	1:A:150:SER:OG	2.27	0.66
1:A:74:GLU:O	1:A:87:ARG:NH1	2.28	0.66
1:B:404:HIS:HD2	6:B:2081:HOH:O	1.76	0.66
1:B:303:ARG:HB3	6:B:2016:HOH:O	1.95	0.66
1:B:108:VAL:CG1	1:B:145:ILE:CD1	2.73	0.66
1:B:196:HIS:HE1	6:B:2030:HOH:O	1.79	0.66
1:A:385:PRO:HA	6:A:2075:HOH:O	1.95	0.65
1:B:14:ILE:HD12	1:B:15:TYR:N	2.09	0.65
1:B:13:TRP:O	1:B:121:LYS:HE2	1.97	0.65
1:B:25:LEU:HD21	1:B:118:VAL:HG13	1.78	0.64
1:B:384:GLU:OE2	1:B:384:GLU:CA	2.45	0.64
1:A:3:MET:HA	1:A:3:MET:HE3	1.76	0.64
1:A:76:ILE:C	1:A:76:ILE:HD12	2.19	0.64
1:B:79:PRO:HG2	1:B:83:VAL:HG11	1.79	0.63
1:B:45:ARG:HB2	1:B:48:ASP:OD1	1.99	0.63
1:A:74:GLU:CD	1:A:74:GLU:H	2.00	0.63
1:A:328:GLN:HG2	1:A:329:PRO:O	1.99	0.63
1:B:435:LYS:NZ	1:B:438:ASN:ND2	2.47	0.63
1:A:435:LYS:O	1:A:437:GLU:HG3	1.99	0.62
1:B:53:ASN:HB2	1:B:57:VAL:HB	1.81	0.62
1:A:101:HIS:HD2	1:A:303:ARG:NH2	1.97	0.61

*Continued on next page...*

*Continued from previous page...*

Atom-1	Atom-2	Distance(Å)	Clash(Å)
1:B:50:ALA:O	1:B:51:ILE:HD12	2.01	0.61
1:A:13:TRP:O	1:A:121:LYS:HE2	2.01	0.61
1:A:74:GLU:N	1:A:74:GLU:CD	2.54	0.61
1:A:178:ARG:CG	1:A:178:ARG:NH1	2.35	0.60
1:B:178:ARG:HB2	1:B:178:ARG:HH11	1.67	0.60
1:A:199:LEU:CD2	1:A:426:ILE:CD1	2.80	0.60
1:B:14:ILE:CD1	1:B:15:TYR:H	2.11	0.60
1:B:179:PHE:CE2	1:B:345:LEU:HD11	2.37	0.59
1:B:435:LYS:O	1:B:437:GLU:N	2.35	0.59
1:A:350:LEU:CD1	1:A:354:LEU:CD1	2.80	0.58
1:A:128:LEU:HD11	1:B:337:ARG:HG3	1.85	0.58
1:B:277:GLN:H	1:B:397:GLN:NE2	2.00	0.58
1:A:163:ILE:HG13	1:A:275:PHE:CD1	2.38	0.58
1:A:101:HIS:CD2	1:A:303:ARG:NH2	2.72	0.58
1:B:50:ALA:C	1:B:51:ILE:HD12	2.24	0.58
1:B:348:LEU:HD23	1:B:352:GLU:HG3	1.84	0.58
1:A:325:ILE:HD11	1:A:354:LEU:HA	1.85	0.58
1:B:159:GLY:HA2	1:B:376:GLN:NE2	2.19	0.57
1:B:280:ASP:HB3	1:B:282:HIS:HD2	1.69	0.57
1:A:393:LYS:CB	1:A:394:PRO:CD	2.82	0.57
1:B:147:ASN:HD22	1:B:154:GLN:NE2	2.02	0.57
1:A:350:LEU:HD11	1:A:354:LEU:HD11	1.85	0.57
1:A:238:ASN:H	1:A:238:ASN:HD22	1.51	0.57
1:B:196:HIS:HD2	6:B:2091:HOH:O	1.88	0.56
1:B:226:LEU:HA	1:B:292:SER:OG	2.04	0.56
1:A:124:LYS:HB3	6:A:2017:HOH:O	2.03	0.56
1:A:119:ASP:HB2	1:A:136:VAL:CG2	2.35	0.56
1:B:393:LYS:N	1:B:394:PRO:HD2	2.19	0.56
1:B:192:ARG:NH2	6:B:2027:HOH:O	2.39	0.56
1:B:52:LYS:CG	1:B:53:ASN:N	2.69	0.55
1:A:119:ASP:HB2	1:A:136:VAL:HG21	1.87	0.55
1:A:172:GLY:HA3	1:A:218:PHE:CD2	2.41	0.55
1:A:86:GLN:NE2	1:A:105:GLY:O	2.35	0.55
1:B:8:LYS:H	1:B:8:LYS:CD	2.11	0.55
1:B:108:VAL:CG1	1:B:145:ILE:HD13	2.36	0.55
1:B:358:LYS:O	1:B:362:ILE:HG12	2.07	0.55
1:B:27:TYR:CZ	1:B:29:GLY:HA3	2.42	0.54
1:A:94:ILE:C	1:A:96:LEU:H	2.10	0.54
1:A:119:ASP:CG	1:A:136:VAL:HG22	2.27	0.54
1:B:435:LYS:HZ1	1:B:438:ASN:ND2	2.04	0.54
1:B:202:GLU:OE2	1:B:429:PHE:HZ	1.90	0.54
1:B:269:GLU:OE2	1:B:281:GLY:HA2	2.07	0.53

*Continued on next page...*

*Continued from previous page...*

Atom-1	Atom-2	Distance(Å)	Clash(Å)
1:A:46:ARG:HH12	1:B:182:LYS:HG3	0.62	0.53
1:B:340:GLU:OE1	1:B:343:LEU:HD12	2.08	0.53
1:B:73:ASN:HA	1:B:76:ILE:HG12	1.90	0.53
1:B:321:CYS:O	1:B:325:ILE:HG12	2.08	0.53
1:A:124:LYS:HB2	6:A:2017:HOH:O	2.08	0.53
1:A:275:PHE:CD1	1:A:276:ILE:CD1	2.78	0.53
1:B:348:LEU:HD21	1:B:352:GLU:OE2	2.09	0.52
1:A:185:MET:O	1:A:188:THR:HB	2.09	0.52
1:B:300:VAL:HG22	1:B:405:PHE:CZ	2.44	0.52
1:B:320:HIS:CE1	1:B:333:CYS:SG	3.02	0.52
1:A:71:GLU:HA	1:A:71:GLU:OE1	2.10	0.52
1:B:330:CYS:O	1:B:334:LYS:HG3	2.09	0.52
1:A:238:ASN:N	1:A:238:ASN:HD22	2.08	0.52
1:B:147:ASN:HD22	1:B:154:GLN:HE22	1.59	0.51
1:A:128:LEU:HG	6:A:2020:HOH:O	2.10	0.51
1:B:179:PHE:CE2	1:B:345:LEU:CD1	2.93	0.51
1:B:290:LEU:HD11	1:B:375:PHE:CE2	2.46	0.51
1:A:94:ILE:O	1:A:96:LEU:N	2.44	0.51
1:B:159:GLY:CA	1:B:376:GLN:NE2	2.74	0.51
1:B:328:GLN:HG3	1:B:329:PRO:HD2	1.92	0.50
1:A:334:LYS:NZ	6:A:2066:HOH:O	2.43	0.50
1:B:51:ILE:O	1:B:51:ILE:HG22	2.11	0.50
1:B:320:HIS:HB3	1:B:346:HIS:NE2	2.27	0.50
1:A:74:GLU:CD	1:A:75:LEU:H	2.15	0.50
1:A:60:VAL:HG21	1:A:78:SER:O	2.12	0.50
1:A:46:ARG:NH1	1:B:182:LYS:O	2.44	0.50
1:B:124:LYS:O	1:B:124:LYS:HD3	2.10	0.49
1:B:172:GLY:HA3	1:B:218:PHE:CD2	2.46	0.49
1:B:244:LEU:C	1:B:244:LEU:CD2	2.80	0.49
1:B:345:LEU:O	1:B:348:LEU:HB2	2.12	0.49
1:B:67:HIS:CE1	1:B:70:ARG:HH21	2.30	0.49
1:A:393:LYS:CA	1:A:393:LYS:CE	2.67	0.49
1:B:435:LYS:HZ1	1:B:438:ASN:HD22	1.57	0.49
1:A:283:ARG:HD3	6:A:2057:HOH:O	2.12	0.49
1:A:307:ILE:O	1:A:310:LEU:HB2	2.13	0.48
1:B:429:PHE:CZ	1:B:433:LYS:HD2	2.48	0.48
1:A:295:VAL:CG1	1:A:301:LEU:HD22	2.43	0.48
1:A:429:PHE:HZ	1:A:433:LYS:HE3	1.74	0.48
1:B:25:LEU:HB2	1:B:39:ILE:HG22	1.95	0.48
1:A:47:ASN:HA	1:B:188:THR:HG21	1.93	0.48
1:B:85:GLU:OE2	1:B:409:SER:CA	2.59	0.47
1:B:244:LEU:CD2	1:B:245:ASN:ND2	2.78	0.47

*Continued on next page...*

*Continued from previous page...*

Atom-1	Atom-2	Distance(Å)	Clash(Å)
1:A:68:LEU:HD21	1:A:361:LEU:HD12	1.95	0.47
1:A:179:PHE:CD2	1:A:342:GLU:OE1	2.67	0.47
1:B:290:LEU:HD11	1:B:375:PHE:CD2	2.50	0.47
1:B:107:ARG:HH11	1:B:142:SER:HB3	1.80	0.47
1:A:70:ARG:HG2	1:A:71:GLU:N	2.28	0.47
1:B:36:GLY:HA2	1:B:151:LEU:HD21	1.97	0.47
1:A:350:LEU:HD13	1:A:354:LEU:HD12	1.96	0.46
1:B:107:ARG:HH11	1:B:142:SER:CB	2.28	0.46
1:A:374:SER:O	1:A:401:TYR:HA	2.14	0.46
1:B:52:LYS:HB2	1:B:58:VAL:N	2.29	0.46
1:B:74:GLU:N	1:B:74:GLU:OE1	2.41	0.46
1:A:154:GLN:CA	1:A:154:GLN:OE1	2.47	0.46
1:A:93:ILE:HG21	1:A:408:LEU:HD13	1.98	0.46
1:B:78:SER:HB3	1:B:83:VAL:HG13	1.96	0.46
1:A:34:PHE:HE1	1:A:145:ILE:CD1	2.29	0.46
1:A:22:ASN:HD21	1:A:42:GLN:HG2	1.81	0.46
1:B:273:LYS:HG3	1:B:274:GLY:N	2.30	0.46
1:A:94:ILE:C	1:A:96:LEU:N	2.68	0.46
1:A:34:PHE:HE1	1:A:145:ILE:HD13	1.80	0.46
1:B:280:ASP:CB	1:B:282:HIS:HD2	2.28	0.46
1:B:108:VAL:HB	1:B:145:ILE:HD13	1.98	0.46
1:B:175:PRO:HB3	6:B:2072:HOH:O	2.15	0.46
1:A:94:ILE:CD1	1:A:102:VAL:HB	2.46	0.46
1:B:435:LYS:C	1:B:437:GLU:H	2.19	0.46
1:B:8:LYS:HD2	1:B:8:LYS:N	2.22	0.45
1:B:290:LEU:CD1	1:B:375:PHE:CE2	3.00	0.45
1:A:45:ARG:HH22	2:A:500:I6P:P3	2.39	0.45
1:A:6:GLU:OE1	1:A:6:GLU:HA	2.15	0.45
1:B:348:LEU:HD21	1:B:352:GLU:CD	2.36	0.45
1:B:22:ASN:HD21	1:B:42:GLN:HG2	1.81	0.45
1:B:332:ILE:HG22	1:B:332:ILE:O	2.15	0.45
1:A:112:LYS:HE3	1:A:116:GLU:OE2	2.17	0.45
1:B:48:ASP:OD1	1:B:48:ASP:N	2.35	0.45
1:B:39:ILE:HD13	1:B:39:ILE:C	2.37	0.44
1:B:152:PHE:CZ	1:B:402:LYS:HE3	2.52	0.44
1:B:393:LYS:HB3	1:B:394:PRO:HD3	2.00	0.44
1:A:115:LEU:HA	1:A:115:LEU:HD23	1.77	0.44
1:B:39:ILE:CD1	1:B:41:ILE:CG1	2.86	0.44
1:B:390:VAL:CG1	1:B:391:SER:N	2.80	0.44
1:A:163:ILE:HG13	1:A:275:PHE:CE1	2.53	0.44
1:B:435:LYS:C	1:B:437:GLU:N	2.71	0.44
1:A:47:ASN:O	1:B:189:SER:OG	2.36	0.44

*Continued on next page...*

*Continued from previous page...*

Atom-1	Atom-2	Distance(Å)	Clash(Å)
1:A:363:ALA:O	1:A:367:LYS:HG3	2.18	0.44
1:A:310:LEU:HA	1:A:310:LEU:HD12	1.90	0.44
1:B:7:GLU:HG3	1:B:113:GLU:HB3	1.99	0.44
1:A:182:LYS:HE2	1:A:182:LYS:HB3	1.66	0.44
1:A:435:LYS:O	1:A:437:GLU:N	2.47	0.43
1:A:206:ILE:HD12	1:A:237:GLN:HE22	1.82	0.43
1:B:68:LEU:HD22	1:B:413:LEU:HD13	1.99	0.43
1:B:313:LEU:O	1:B:314:ASP:HB3	2.18	0.43
1:A:177:SER:HB3	1:A:180:ILE:HG13	2.00	0.43
1:A:47:ASN:OD1	1:B:188:THR:HG21	2.19	0.43
1:A:430:TYR:O	1:A:434:GLN:HG2	2.18	0.43
1:B:244:LEU:C	1:B:244:LEU:HD23	2.38	0.43
1:B:185:MET:O	1:B:188:THR:HG22	2.17	0.43
1:A:392:LEU:HA	1:A:392:LEU:HD23	1.89	0.43
1:B:92:VAL:HG11	1:B:362:ILE:HD11	2.00	0.43
1:B:323:TYR:CD2	1:B:331:PRO:HD2	2.54	0.43
1:A:238:ASN:ND2	1:A:238:ASN:H	2.16	0.43
1:B:261:SER:HB2	1:B:262:PRO:HD2	2.01	0.43
1:B:3:MET:HA	1:B:3:MET:HE2	2.01	0.42
1:A:301:LEU:HD11	1:A:371:ILE:HD13	2.01	0.42
1:A:120:LYS:HD2	1:A:120:LYS:O	2.18	0.42
1:A:186:LEU:HD12	1:A:186:LEU:HA	1.88	0.42
1:A:108:VAL:HB	1:A:145:ILE:CD1	2.49	0.42
1:A:174:LEU:HD13	1:A:215:LEU:HD21	2.01	0.42
1:B:16:ARG:NH2	1:B:150:SER:OG	2.53	0.42
1:B:374:SER:O	1:B:401:TYR:HA	2.19	0.42
1:B:325:ILE:CD1	1:B:354:LEU:HG	2.50	0.41
1:A:83:VAL:HG22	1:A:107:ARG:NE	2.35	0.41
1:B:339:LEU:O	1:B:342:GLU:HB2	2.20	0.41
1:B:329:PRO:HB2	1:B:334:LYS:HZ2	1.85	0.41
1:A:328:GLN:HG3	1:A:329:PRO:HD2	2.01	0.41
1:A:16:ARG:HH22	1:A:148:ASP:CG	2.23	0.41
1:B:324:ASP:CG	1:B:346:HIS:HD1	2.24	0.41
1:A:282:HIS:O	1:A:285:GLU:HG2	2.20	0.41
1:B:39:ILE:HD12	1:B:41:ILE:CD1	2.50	0.41
1:A:94:ILE:HB	1:A:95:PRO:CD	2.42	0.41
1:A:76:ILE:C	1:A:76:ILE:CD1	2.86	0.41
1:A:97:LEU:HG	1:A:307:ILE:CD1	2.51	0.41
1:B:3:MET:HA	1:B:3:MET:HE1	1.98	0.41
1:A:190:VAL:HB	1:A:195:MET:HE2	2.02	0.41
1:B:352:GLU:O	1:B:355:LYS:HB2	2.21	0.41
1:B:435:LYS:HD2	1:B:435:LYS:N	2.35	0.41

*Continued on next page...*



Continued from previous page...

Atom-1	Atom-2	Distance(Å)	Clash(Å)
1:B:325:ILE:HD12	1:B:354:LEU:CD2	2.51	0.41
1:B:165:VAL:O	1:B:372:MET:HA	2.21	0.41
1:B:325:ILE:HD12	1:B:354:LEU:HD23	2.02	0.40
1:B:390:VAL:HG12	1:B:391:SER:N	2.36	0.40
1:B:338:PRO:HA	1:B:342:GLU:OE1	2.22	0.40

There are no symmetry-related clashes.

## 5.3 Torsion angles

### 5.3.1 Protein backbone ⓘ

In the following table, the Percentiles column shows the percent Ramachandran outliers of the chain as a percentile score with respect to all X-ray entries followed by that with respect to entries of similar resolution. The Analysed column shows the number of residues for which the backbone conformation was analysed, and the total number of residues.

Mol	Chain	Analysed	Favoured	Allowed	Outliers	Percentiles	
1	A	409/451 (91%)	393 (96%)	14 (3%)	2 (0%)	38	38
1	B	418/451 (93%)	401 (96%)	16 (4%)	1 (0%)	56	62
All	All	827/902 (92%)	794 (96%)	30 (4%)	3 (0%)	43	45

All (3) Ramachandran outliers are listed below:

Mol	Chain	Res	Type
1	B	436	ALA
1	A	170	LYS
1	A	393	LYS

### 5.3.2 Protein sidechains ⓘ

In the following table, the Percentiles column shows the percent sidechain outliers of the chain as a percentile score with respect to all X-ray entries followed by that with respect to entries of similar resolution. The Analysed column shows the number of residues for which the sidechain conformation was analysed, and the total number of residues.

Mol	Chain	Analysed	Rotameric	Outliers	Percentiles	
1	A	371/399 (93%)	353 (95%)	18 (5%)	35	40
1	B	378/399 (95%)	346 (92%)	32 (8%)	15	14

Continued on next page...



*Continued from previous page...*

Mol	Chain	Analysed	Rotameric	Outliers	Percentiles	
All	All	749/798 (94%)	699 (93%)	50 (7%)	23	24

All (50) residues with a non-rotameric sidechain are listed below:

Mol	Chain	Res	Type
1	A	3	MET
1	A	25	LEU
1	A	47	ASN
1	A	74	GLU
1	A	93	ILE
1	A	154	GLN
1	A	164	SER
1	A	174	LEU
1	A	178	ARG
1	A	186	LEU
1	A	189	SER
1	A	192	ARG
1	A	238	ASN
1	A	244	LEU
1	A	300	VAL
1	A	301	LEU
1	A	310	LEU
1	A	343	LEU
1	B	3	MET
1	B	4	ILE
1	B	8	LYS
1	B	16	ARG
1	B	25	LEU
1	B	39	ILE
1	B	45	ARG
1	B	52	LYS
1	B	63	SER
1	B	142	SER
1	B	151	LEU
1	B	154	GLN
1	B	174	LEU
1	B	178	ARG
1	B	188	THR
1	B	198	LEU
1	B	202	GLU
1	B	208	GLU
1	B	237	GLN

*Continued on next page...*

*Continued from previous page...*

Mol	Chain	Res	Type
1	B	244	LEU
1	B	279	GLU
1	B	290	LEU
1	B	292	SER
1	B	301	LEU
1	B	333	CYS
1	B	335	GLU
1	B	340	GLU
1	B	352	GLU
1	B	356	ILE
1	B	384	GLU
1	B	435	LYS
1	B	437	GLU

Some sidechains can be flipped to improve hydrogen bonding and reduce clashes. All (19) such sidechains are listed below:

Mol	Chain	Res	Type
1	A	22	ASN
1	A	66	GLN
1	A	91	ASN
1	A	101	HIS
1	A	147	ASN
1	A	149	HIS
1	A	238	ASN
1	A	404	HIS
1	B	22	ASN
1	B	72	ASN
1	B	91	ASN
1	B	147	ASN
1	B	149	HIS
1	B	196	HIS
1	B	376	GLN
1	B	379	ASN
1	B	397	GLN
1	B	404	HIS
1	B	438	ASN

### 5.3.3 RNA ⓘ

There are no RNA chains in this entry.

## 5.4 Non-standard residues in protein, DNA, RNA chains ⓘ

There are no non-standard protein/DNA/RNA residues in this entry.

## 5.5 Carbohydrates ⓘ

There are no carbohydrates in this entry.

## 5.6 Ligand geometry ⓘ

Of 10 ligands modelled in this entry, 6 are monoatomic - leaving 4 for Mogul analysis.

In the following table, the Counts columns list the number of bonds (or angles) for which Mogul statistics could be retrieved, the number of bonds (or angles) that are observed in the model and the number of bonds (or angles) that are defined in the chemical component dictionary. The Link column lists molecule types, if any, to which the group is linked. The Z score for a bond length (or angle) is the number of standard deviations the observed value is removed from the expected value. A bond length (or angle) with  $|Z| > 2$  is considered an outlier worth inspection. RMSZ is the root-mean-square of all Z scores of the bond lengths (or angles).

Mol	Type	Chain	Res	Link	Bond lengths			Bond angles		
					Counts	RMSZ	$\# Z  > 2$	Counts	RMSZ	$\# Z  > 2$
2	I6P	A	500	5	36,36,36	0.70	0	60,60,60	1.10	2 (3%)
3	ADP	A	600	5	29,29,29	1.11	2 (6%)	45,45,45	1.69	8 (17%)
2	I6P	B	500	5	36,36,36	0.69	0	60,60,60	1.21	5 (8%)
3	ADP	B	600	5	29,29,29	1.11	3 (10%)	45,45,45	1.65	6 (13%)

In the following table, the Chirals column lists the number of chiral outliers, the number of chiral centers analysed, the number of these observed in the model and the number defined in the chemical component dictionary. Similar counts are reported in the Torsion and Rings columns. '-' means no outliers of that kind were identified.

Mol	Type	Chain	Res	Link	Chirals	Torsions	Rings
2	I6P	A	500	5	-	0/30/54/54	0/1/1/1
3	ADP	A	600	5	-	0/16/32/32	0/1/3/3
2	I6P	B	500	5	-	0/30/54/54	0/1/1/1
3	ADP	B	600	5	-	0/16/32/32	0/1/3/3

All (5) bond length outliers are listed below:

Mol	Chain	Res	Type	Atoms	Z	Observed(Å)	Ideal(Å)
3	A	600	ADP	C4-N9	-3.42	1.32	1.37
3	B	600	ADP	C5-C4	3.13	1.47	1.40

*Continued on next page...*

*Continued from previous page...*

Mol	Chain	Res	Type	Atoms	Z	Observed(Å)	Ideal(Å)
3	A	600	ADP	C5-C4	2.79	1.46	1.40
3	B	600	ADP	C4-N9	-2.46	1.34	1.37
3	B	600	ADP	PB-O3A	2.09	1.63	1.60

All (21) bond angle outliers are listed below:

Mol	Chain	Res	Type	Atoms	Z	Observed(°)	Ideal(°)
3	A	600	ADP	N3-C2-N1	-6.47	123.30	128.71
3	B	600	ADP	N3-C2-N1	-6.13	123.58	128.71
3	B	600	ADP	N3-C4-N9	5.03	134.51	125.43
3	A	600	ADP	N3-C4-N9	4.53	133.62	125.43
3	B	600	ADP	C4-C5-N7	-2.86	107.08	109.52
3	B	600	ADP	C5-C4-N3	-2.85	119.50	125.70
3	A	600	ADP	C4-C5-N7	-2.78	107.14	109.52
3	A	600	ADP	C8-N9-C4	2.77	109.01	106.90
2	B	500	I6P	O12-C2-C3	2.55	113.70	108.45
3	A	600	ADP	C5-C4-N3	-2.53	120.20	125.70
2	A	500	I6P	O12-C2-C1	2.34	113.28	108.45
3	B	600	ADP	C8-N9-C4	2.29	108.65	106.90
3	B	600	ADP	C2-N3-C4	2.27	120.47	114.01
2	B	500	I6P	O34-P4-O14	-2.24	100.64	107.09
2	B	500	I6P	O25-P5-O15	-2.23	100.68	107.09
2	B	500	I6P	O25-P5-O45	2.22	116.27	107.61
3	A	600	ADP	PA-O3A-PB	-2.22	125.17	131.68
3	A	600	ADP	C2-N3-C4	2.18	120.21	114.01
3	A	600	ADP	C2'-C1'-N9	-2.18	107.68	113.27
2	B	500	I6P	O23-P3-O43	2.15	115.97	107.61
2	A	500	I6P	O21-P1-O41	2.04	115.54	107.61

There are no chirality outliers.

There are no torsion outliers.

There are no ring outliers.

## 5.7 Other polymers ⓘ

There are no such residues in this entry.

## 5.8 Polymer linkage issues

There are no chain breaks in this entry.

## 6 Fit of model and data ⓘ

### 6.1 Protein, DNA and RNA chains ⓘ

In the following table, the column labelled ‘#RSRZ > 2’ contains the number (and percentage) of RSRZ outliers, followed by percent RSRZ outliers for the chain as percentile scores relative to all X-ray entries and entries of similar resolution. The OWAB column contains the minimum, median, 95<sup>th</sup> percentile and maximum values of the occupancy-weighted average B-factor per residue. The column labelled ‘Q < 0.9’ lists the number of (and percentage) of residues with an average occupancy less than 0.9.

Mol	Chain	Analysed	<RSRZ>	#RSRZ>2	OWAB(Å <sup>2</sup> )	Q<0.9
1	A	417/451 (92%)	0.14	19 (4%) 31 31	11, 22, 38, 53	0
1	B	426/451 (94%)	0.28	18 (4%) 35 35	11, 21, 40, 63	0
All	All	843/902 (93%)	0.21	37 (4%) 34 33	11, 22, 39, 63	0

All (37) RSRZ outliers are listed below:

Mol	Chain	Res	Type	RSRZ
1	B	336	GLY	6.4
1	B	436	ALA	5.8
1	A	383	SER	5.4
1	A	343	LEU	5.1
1	B	280	ASP	4.2
1	B	50	ALA	4.1
1	A	98	GLY	3.9
1	A	3	MET	3.9
1	B	48	ASP	3.8
1	A	73	ASN	3.5
1	B	57	VAL	3.5
1	B	334	LYS	3.3
1	A	342	GLU	3.3
1	A	335	GLU	3.2
1	A	5	LEU	3.1
1	B	435	LYS	2.9
1	B	438	ASN	2.9
1	A	75	LEU	2.8
1	B	53	ASN	2.7
1	A	45	ARG	2.7
1	A	158	SER	2.6
1	B	340	GLU	2.6
1	B	30	SER	2.6
1	A	67	HIS	2.5

*Continued on next page...*

*Continued from previous page...*

Mol	Chain	Res	Type	RSRZ
1	B	183	GLU	2.5
1	B	47	ASN	2.5
1	A	381	TRP	2.5
1	B	333	CYS	2.4
1	A	303	ARG	2.4
1	B	51	ILE	2.3
1	B	32	PRO	2.2
1	A	432	ARG	2.2
1	A	48	ASP	2.1
1	A	99	PRO	2.1
1	A	4	ILE	2.1
1	A	46	ARG	2.0
1	B	4	ILE	2.0

## 6.2 Non-standard residues in protein, DNA, RNA chains ⓘ

There are no non-standard protein/DNA/RNA residues in this entry.

## 6.3 Carbohydrates ⓘ

There are no carbohydrates in this entry.

## 6.4 Ligands ⓘ

In the following table, the Atoms column lists the number of modelled atoms in the group and the number defined in the chemical component dictionary. LLDF column lists the quality of electron density of the group with respect to its neighbouring residues in protein, DNA or RNA chains. The B-factors column lists the minimum, median, 95<sup>th</sup> percentile and maximum values of B factors of atoms in the group. The column labelled 'Q < 0.9' lists the number of atoms with occupancy less than 0.9.

Mol	Type	Chain	Res	Atoms	RSR	LLDF	B-factors(Å <sup>2</sup> )	Q<0.9
5	MG	B	1031	1/1	0.19	3.17	43,43,43,43	0
5	MG	A	1128	1/1	0.13	1.33	44,44,44,44	0
3	ADP	A	600	27/27	0.13	0.76	14,21,27,27	0
2	I6P	B	500	36/36	0.16	0.70	18,21,33,35	0
3	ADP	B	600	27/27	0.14	0.19	16,17,22,23	0
2	I6P	A	500	36/36	0.15	0.17	16,20,27,30	0
4	ZN	A	700	1/1	0.18	0.06	33,33,33,33	0
4	ZN	B	700	1/1	0.13	-0.68	35,35,35,35	0

*Continued on next page...*

*Continued from previous page...*

Mol	Type	Chain	Res	Atoms	RSR	LLDF	B-factors( $\text{\AA}^2$ )	Q<0.9
5	MG	A	1129	1/1	0.10	-1.41	27,27,27,27	0
5	MG	B	1030	1/1	0.10	-3.73	23,23,23,23	0

## 6.5 Other polymers ⓘ

There are no such residues in this entry.