



Full wwPDB X-ray Structure Validation Report i

Feb 26, 2014 – 11:15 PM GMT

PDB ID : 1XS4
Title : dCTP deaminase from Escherichia coli- E138A mutant enzyme in complex with dCTP
Authors : Johansson, E.; Fano, M.; Bynck, J.H.; Neuhard, J.; Larsen, S.; Sigurskjold, B.W.; Christensen, U.; Willemoes, M.
Deposited on : 2004-10-18
Resolution : 2.53 Å(reported)

This is a full wwPDB validation report for a publicly released PDB entry.
We welcome your comments at validation@mail.wwpdb.org
A user guide is available at <http://wwpdb.org/ValidationPDFNotes.html>

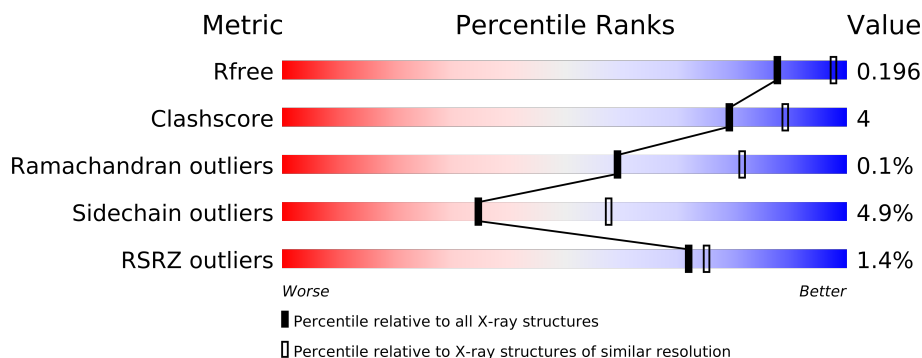
The following versions of software and data (see [references](#)) were used in the production of this report:

MolProbity : 4.02b-467
Mogul : 1.15 2013
Xtriage (Phenix) : dev-1323
EDS : stable22639
Percentile statistics : 21963
Refmac : 5.8.0049
CCP4 : 6.3.0 (Settle)
Ideal geometry (proteins) : Engh & Huber (2001)
Ideal geometry (DNA, RNA) : Parkinson et. al. (1996)
Validation Pipeline (wwPDB-VP) : stable22683

1 Overall quality at a glance

The reported resolution of this entry is 2.53 Å.

Percentile scores (ranging between 0-100) for global validation metrics of the entry are shown in the following graphic. The table shows the number of entries on which the scores are based.



Metric	Whole archive (#Entries)	Similar resolution (#Entries, resolution range(Å))
R_{free}	66092	3240 (2.54-2.50)
Clashscore	79885	4080 (2.54-2.50)
Ramachandran outliers	78287	3990 (2.54-2.50)
Sidechain outliers	78261	3992 (2.54-2.50)
RSRZ outliers	66119	3241 (2.54-2.50)

The table below summarises the geometric issues observed across the polymeric chains and their fit to the electron density. The red, orange, yellow and green segments on the lower bar indicate the fraction of residues that contain outliers for ≥ 3 , 2, 1 and 0 types of geometric quality criteria. The upper red bar (where present) indicates the fraction of residues that have poor fit to the electron density.

Mol	Chain	Length	Quality of chain
1	A	193	
1	B	193	
1	C	193	
1	D	193	
1	E	193	
1	F	193	

The following table lists non-polymeric compounds that are outliers for geometric or electron-density-fit criteria:

Mol	Type	Chain	Res	Geometry	Electron density
2	MG	F	4195	-	X

2 Entry composition

There are 4 unique types of molecules in this entry. The entry contains 9355 atoms, of which 0 are hydrogen and 0 are deuterium.

In the tables below, the ZeroOcc column contains the number of atoms modelled with zero occupancy, the AltConf column contains the number of residues with at least one atom in alternate conformation and the Trace column contains the number of residues modelled with at most 2 atoms.

- Molecule 1 is a protein called Deoxycytidine triphosphate deaminase.

Mol	Chain	Residues	Atoms						ZeroOcc	AltConf	Trace
1	A	193	Total	C	N	O	S	Se	0	0	0
			1492	939	271	276	2	4			
1	B	193	Total	C	N	O	S	Se	0	0	0
			1492	939	271	276	2	4			
1	C	193	Total	C	N	O	S	Se	0	0	0
			1492	939	271	276	2	4			
1	D	193	Total	C	N	O	S	Se	0	0	0
			1492	939	271	276	2	4			
1	E	193	Total	C	N	O	S	Se	0	0	0
			1492	939	271	276	2	4			
1	F	193	Total	C	N	O	S	Se	0	0	0
			1492	939	271	276	2	4			

There are 30 discrepancies between the modelled and reference sequences:

Chain	Residue	Modelled	Actual	Comment	Reference
A	1	MSE	MET	MODIFIED RESIDUE	UNP P28248
A	69	MSE	MET	MODIFIED RESIDUE	UNP P28248
A	119	MSE	MET	MODIFIED RESIDUE	UNP P28248
A	138	ALA	GLU	ENGINEERED	UNP P28248
A	153	MSE	MET	MODIFIED RESIDUE	UNP P28248
B	1	MSE	MET	MODIFIED RESIDUE	UNP P28248
B	69	MSE	MET	MODIFIED RESIDUE	UNP P28248
B	119	MSE	MET	MODIFIED RESIDUE	UNP P28248
B	138	ALA	GLU	ENGINEERED	UNP P28248
B	153	MSE	MET	MODIFIED RESIDUE	UNP P28248
C	1	MSE	MET	MODIFIED RESIDUE	UNP P28248
C	69	MSE	MET	MODIFIED RESIDUE	UNP P28248
C	119	MSE	MET	MODIFIED RESIDUE	UNP P28248
C	138	ALA	GLU	ENGINEERED	UNP P28248
C	153	MSE	MET	MODIFIED RESIDUE	UNP P28248
D	1	MSE	MET	MODIFIED RESIDUE	UNP P28248
D	69	MSE	MET	MODIFIED RESIDUE	UNP P28248

Continued on next page...

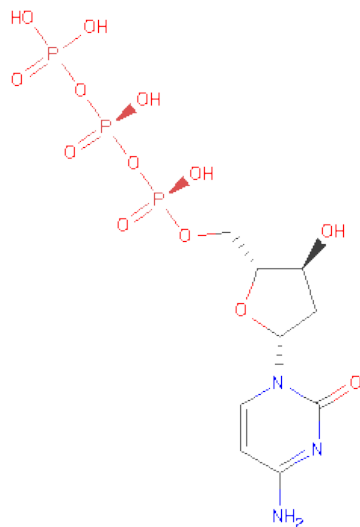
Continued from previous page...

Chain	Residue	Modelled	Actual	Comment	Reference
D	119	MSE	MET	MODIFIED RESIDUE	UNP P28248
D	138	ALA	GLU	ENGINEERED	UNP P28248
D	153	MSE	MET	MODIFIED RESIDUE	UNP P28248
E	1	MSE	MET	MODIFIED RESIDUE	UNP P28248
E	69	MSE	MET	MODIFIED RESIDUE	UNP P28248
E	119	MSE	MET	MODIFIED RESIDUE	UNP P28248
E	138	ALA	GLU	ENGINEERED	UNP P28248
E	153	MSE	MET	MODIFIED RESIDUE	UNP P28248
F	1	MSE	MET	MODIFIED RESIDUE	UNP P28248
F	69	MSE	MET	MODIFIED RESIDUE	UNP P28248
F	119	MSE	MET	MODIFIED RESIDUE	UNP P28248
F	138	ALA	GLU	ENGINEERED	UNP P28248
F	153	MSE	MET	MODIFIED RESIDUE	UNP P28248

- Molecule 2 is MAGNESIUM ION (three-letter code: MG) (formula: Mg).

Mol	Chain	Residues	Atoms	ZeroOcc	AltConf
2	D	1	Total Mg 1 1	0	0
2	E	1	Total Mg 1 1	0	0
2	B	1	Total Mg 1 1	0	0
2	C	1	Total Mg 1 1	0	0
2	A	1	Total Mg 1 1	0	0
2	F	1	Total Mg 1 1	0	0

- Molecule 3 is 2'-DEOXYCYTIDINE-5'-TRIPHOSPHATE (three-letter code: DCP) (formula: C₉H₁₆N₃O₁₃P₃).



Mol	Chain	Residues	Atoms					ZeroOcc	AltConf
3	A	1	Total	C	N	O	P	0	0
			28	9	3	13	3		
3	B	1	Total	C	N	O	P	0	0
			28	9	3	13	3		
3	C	1	Total	C	N	O	P	0	0
			28	9	3	13	3		
3	D	1	Total	C	N	O	P	0	0
			28	9	3	13	3		
3	E	1	Total	C	N	O	P	0	0
			28	9	3	13	3		
3	F	1	Total	C	N	O	P	0	0
			28	9	3	13	3		

- Molecule 4 is water.

Mol	Chain	Residues	Atoms		ZeroOcc	AltConf
4	A	37	Total	O	0	0
			37	37		
4	B	35	Total	O	0	0
			35	35		
4	C	35	Total	O	0	0
			35	35		
4	D	38	Total	O	0	0
			38	38		
4	E	50	Total	O	0	0
			50	50		
4	F	34	Total	O	0	0
			34	34		

3 Residue-property plots

These plots are drawn for all protein, RNA and DNA chains in the entry. The first graphic for a chain summarises the proportions of errors displayed in the second graphic. The second graphic shows the sequence view annotated by issues in geometry and electron density. Residues are color-coded according to the number of geometric quality criteria for which they contain at least one outlier: green = 0, yellow = 1, orange = 2 and red = 3 or more. A red dot above a residue indicates a poor fit to the electron density ($RSRZ > 2$). Stretches of 2 or more consecutive residues without any outlier are shown as a green connector. Residues present in the sample, but not in the model, are shown in grey.

- Molecule 1: Deoxycytidine triphosphate deaminase

Chain A: 



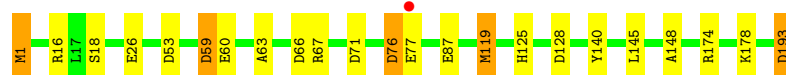
- Molecule 1: Deoxycytidine triphosphate deaminase

Chain B: 



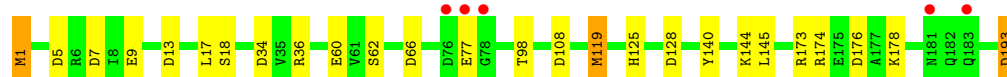
- Molecule 1: Deoxycytidine triphosphate deaminase

Chain C: 



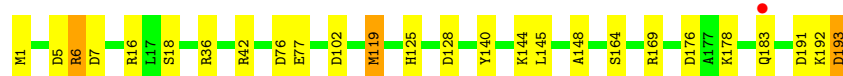
- Molecule 1: Deoxycytidine triphosphate deaminase

Chain D: 



- Molecule 1: Deoxycytidine triphosphate deaminase

Chain E: 



- Molecule 1: Deoxycytidine triphosphate deaminase

Chain F: 



4 Data and refinement statistics

Property	Value	Source
Space group	P 1 21 1	Depositor
Cell constants a, b, c, α , β , γ	63.27Å 97.88Å 95.12Å 90.00° 109.23° 90.00°	Depositor
Resolution (Å)	30.00 – 2.53 29.94 – 2.53	Depositor EDS
% Data completeness (in resolution range)	99.4 (30.00-2.53) 98.6 (29.94-2.53)	Depositor EDS
R_{merge}	(Not available)	Depositor
R_{sym}	0.05	Depositor
$\langle I/\sigma(I) \rangle$ ¹	8.63 (at 2.54Å)	Xtriage
Refinement program	REFMAC 5.1.24	Depositor
R, R_{free}	0.185 , 0.225 0.176 , 0.196	Depositor DCC
R_{free} test set	1818 reflections (5.24%)	DCC
Wilson B-factor (Å ²)	24.1	Xtriage
Anisotropy	0.384	Xtriage
Bulk solvent k_{sol} (e/Å ³), B_{sol} (Å ²)	0.32 , -3.6	EDS
Estimated twinning fraction	0.220 for h,-k,-h-l	Xtriage
L-test for twinning	$\langle L \rangle = 0.48$, $\langle L^2 \rangle = 0.31$	Xtriage
Outliers	0 of 36399 reflections	Xtriage
F_o, F_c correlation	0.94	EDS
Total number of atoms	9355	wwPDB-VP
Average B, all atoms (Å ²)	20.0	wwPDB-VP

Xtriage's analysis on translational NCS is as follows: *The largest off-origin peak in the Patterson function is 7.09% of the height of the origin peak. No significant pseudotranslation is detected.*

¹Intensities estimated from amplitudes.

5 Model quality

5.1 Standard geometry

Bond lengths and bond angles in the following residue types are not validated in this section: MG, DCP

The Z score for a bond length (or angle) is the number of standard deviations the observed value is removed from the expected value. A bond length (or angle) with $|Z| > 5$ is considered an outlier worth inspection. RMSZ is the root-mean-square of all Z scores of the bond lengths (or angles).

Mol	Chain	Bond lengths		Bond angles	
		RMSZ	# $ Z > 5$	RMSZ	# $ Z > 5$
1	A	0.86	1/1520 (0.1%)	1.01	9/2056 (0.4%)
1	B	0.86	1/1520 (0.1%)	1.01	9/2056 (0.4%)
1	C	0.82	1/1520 (0.1%)	0.94	8/2056 (0.4%)
1	D	0.84	2/1520 (0.1%)	1.02	12/2056 (0.6%)
1	E	0.89	3/1520 (0.2%)	1.01	10/2056 (0.5%)
1	F	0.88	0/1520	0.98	8/2056 (0.4%)
All	All	0.86	8/9120 (0.1%)	0.99	56/12336 (0.5%)

All (8) bond length outliers are listed below:

Mol	Chain	Res	Type	Atoms	Z	Observed(Å)	Ideal(Å)
1	E	183	GLN	CG-CD	8.06	1.69	1.51
1	E	183	GLN	CB-CG	6.66	1.70	1.52
1	D	144	LYS	CD-CE	5.61	1.65	1.51
1	C	119	MSE	SE-CE	-5.31	1.64	1.95
1	B	119	MSE	SE-CE	-5.28	1.64	1.95
1	A	71	ASP	CB-CG	5.18	1.62	1.51
1	E	119	MSE	SE-CE	-5.03	1.65	1.95
1	D	119	MSE	SE-CE	-5.00	1.66	1.95

All (56) bond angle outliers are listed below:

Mol	Chain	Res	Type	Atoms	Z	Observed(°)	Ideal(°)
1	F	174	ARG	NE-CZ-NH2	-9.34	115.63	120.30
1	D	36	ARG	NE-CZ-NH1	8.53	124.56	120.30
1	E	193	ASP	CB-CG-OD2	8.51	125.96	118.30
1	B	76	ASP	CB-CG-OD2	8.10	125.59	118.30
1	E	128	ASP	CB-CG-OD2	8.04	125.54	118.30
1	A	71	ASP	CB-CG-OD2	7.95	125.45	118.30
1	A	193	ASP	CB-CG-OD2	7.80	125.32	118.30

Continued on next page...

Continued from previous page...

Mol	Chain	Res	Type	Atoms	Z	Observed(°)	Ideal(°)
1	A	7	ASP	CB-CG-OD2	7.59	125.13	118.30
1	A	174	ARG	NE-CZ-NH2	-7.42	116.59	120.30
1	F	7	ASP	CB-CG-OD2	7.38	124.94	118.30
1	C	193	ASP	CB-CG-OD2	7.37	124.93	118.30
1	B	34	ASP	CB-CG-OD2	7.35	124.92	118.30
1	D	13	ASP	CB-CG-OD2	7.28	124.86	118.30
1	E	7	ASP	CB-CG-OD2	6.97	124.57	118.30
1	B	174	ARG	NE-CZ-NH2	-6.87	116.86	120.30
1	D	193	ASP	CB-CG-OD2	6.85	124.46	118.30
1	F	76	ASP	CB-CG-OD2	6.61	124.25	118.30
1	D	34	ASP	CB-CG-OD2	6.57	124.21	118.30
1	B	176	ASP	CB-CG-OD2	6.49	124.14	118.30
1	C	59	ASP	CB-CG-OD2	6.48	124.14	118.30
1	B	66	ASP	CB-CG-OD2	6.47	124.12	118.30
1	F	71	ASP	CB-CG-OD2	6.47	124.12	118.30
1	F	174	ARG	NE-CZ-NH1	6.46	123.53	120.30
1	C	174	ARG	NE-CZ-NH2	-6.45	117.07	120.30
1	D	7	ASP	CB-CG-OD2	6.42	124.08	118.30
1	C	174	ARG	NE-CZ-NH1	6.41	123.51	120.30
1	E	176	ASP	CB-CG-OD2	6.37	124.03	118.30
1	D	174	ARG	NE-CZ-NH2	-6.24	117.18	120.30
1	E	102	ASP	CB-CG-OD2	6.21	123.89	118.30
1	C	71	ASP	CB-CG-OD2	6.08	123.77	118.30
1	A	76	ASP	CB-CG-OD2	6.01	123.71	118.30
1	C	66	ASP	CB-CG-OD2	5.99	123.69	118.30
1	E	5	ASP	CB-CG-OD2	5.99	123.69	118.30
1	B	13	ASP	CB-CG-OD2	5.93	123.64	118.30
1	B	174	ARG	NE-CZ-NH1	5.93	123.26	120.30
1	D	176	ASP	CB-CG-OD2	5.92	123.63	118.30
1	E	191	ASP	CB-CG-OD2	5.79	123.51	118.30
1	B	36	ARG	NE-CZ-NH1	5.77	123.19	120.30
1	C	128	ASP	CB-CG-OD2	5.77	123.50	118.30
1	D	108	ASP	CB-CG-OD2	5.75	123.48	118.30
1	D	174	ARG	NE-CZ-NH1	5.67	123.13	120.30
1	D	128	ASP	CB-CG-OD2	5.66	123.39	118.30
1	E	76	ASP	CB-CG-OD2	5.64	123.37	118.30
1	A	6	ARG	NE-CZ-NH1	5.54	123.07	120.30
1	D	66	ASP	CB-CG-OD2	5.51	123.26	118.30
1	F	169	ARG	NE-CZ-NH1	5.50	123.05	120.30
1	F	13	ASP	CB-CG-OD2	5.43	123.19	118.30
1	D	36	ARG	NE-CZ-NH2	-5.38	117.61	120.30
1	E	169	ARG	NE-CZ-NH2	-5.35	117.62	120.30

Continued on next page...

Continued from previous page...

Mol	Chain	Res	Type	Atoms	Z	Observed(°)	Ideal(°)
1	B	108	ASP	CB-CG-OD2	5.35	123.12	118.30
1	A	174	ARG	NE-CZ-NH1	5.35	122.97	120.30
1	A	150	ARG	NE-CZ-NH1	5.20	122.90	120.30
1	A	102	ASP	CB-CG-OD2	5.17	122.95	118.30
1	F	191	ASP	CB-CG-OD2	5.11	122.90	118.30
1	C	76	ASP	CB-CG-OD2	5.05	122.84	118.30
1	E	36	ARG	NE-CZ-NH1	5.01	122.81	120.30

There are no chirality outliers.

There are no planarity outliers.

5.2 Close contacts ⓘ

In the following table, the Non-H and H(model) columns list the number of non-hydrogen atoms and hydrogen atoms in the chain respectively. The H(added) column lists the number of hydrogens added by MolProbity. The Clashes column lists the number of clashes within the asymmetric unit, and the number in parentheses is this value normalized per 1000 atoms of the molecule in the chain. The Symm-Clashes column gives symmetry related clashes, in the same way as for the Clashes column.

Mol	Chain	Non-H	H(model)	H(added)	Clashes	Symm-Clashes
1	A	1492	0	1494	13	0
1	B	1492	0	1494	15	0
1	C	1492	0	1494	17	0
1	D	1492	0	1494	13	0
1	E	1492	0	1494	20	0
1	F	1492	0	1494	17	0
2	A	1	0	0	0	0
2	B	1	0	0	0	0
2	C	1	0	0	0	0
2	D	1	0	0	0	0
2	E	1	0	0	0	0
2	F	1	0	0	0	0
3	A	28	0	12	0	0
3	B	28	0	12	0	0
3	C	28	0	12	0	0
3	D	28	0	12	0	0
3	E	28	0	12	0	0
3	F	28	0	12	0	0
4	A	37	0	0	0	0
4	B	35	0	0	0	0

Continued on next page...

Continued from previous page...

Mol	Chain	Non-H	H(model)	H(added)	Clashes	Symm-Clashes
4	C	35	0	0	1	0
4	D	38	0	0	0	0
4	E	50	0	0	0	0
4	F	34	0	0	0	0
All	All	9355	0	9036	64	0

Clashscore is defined as the number of clashes calculated for the entry per 1000 atoms (including hydrogens) of the entry. The overall clashscore for this entry is 4.

All (64) close contacts within the same asymmetric unit are listed below.

Atom-1	Atom-2	Distance(Å)	Clash(Å)
1:C:1:MSE:SE	1:C:1:MSE:CE	2.15	1.45
1:B:178:LYS:NZ	1:B:193:ASP:OD2	1.93	0.99
1:F:119:MSE:HE2	1:F:140:TYR:HB3	1.52	0.91
1:D:178:LYS:NZ	1:D:193:ASP:OD2	2.03	0.89
1:A:119:MSE:HE2	1:A:140:TYR:HB3	1.55	0.89
1:C:178:LYS:NZ	1:C:193:ASP:OD2	2.06	0.88
1:E:1:MSE:N	1:F:1:MSE:N	2.22	0.88
1:E:178:LYS:NZ	1:E:193:ASP:OD2	2.08	0.87
1:F:178:LYS:NZ	1:F:193:ASP:OD2	2.07	0.86
1:E:1:MSE:H1	1:F:1:MSE:H1	1.25	0.85
1:E:119:MSE:HE2	1:E:140:TYR:HB3	1.58	0.85
1:E:1:MSE:H1	1:F:1:MSE:N	1.75	0.84
1:B:119:MSE:HE2	1:B:140:TYR:HB3	1.57	0.84
1:D:119:MSE:HE2	1:D:140:TYR:HB3	1.57	0.84
1:A:1:MSE:H1	1:B:1:MSE:H3	1.26	0.80
1:C:119:MSE:HE2	1:C:140:TYR:HB3	1.64	0.80
1:A:178:LYS:NZ	1:A:193:ASP:OD2	2.20	0.75
1:D:1:MSE:HE1	1:E:164:SER:HB3	1.72	0.70
1:A:1:MSE:H1	1:B:1:MSE:N	1.93	0.67
1:E:144:LYS:HE3	1:F:87:GLU:OE1	1.95	0.65
1:A:1:MSE:N	1:C:1:MSE:H2	1.96	0.63
1:D:1:MSE:N	1:E:1:MSE:N	2.48	0.62
1:E:1:MSE:N	1:F:1:MSE:H3	1.99	0.60
1:E:1:MSE:H2	1:F:1:MSE:N	2.00	0.59
1:B:1:MSE:H3	1:C:1:MSE:N	2.04	0.56
1:E:1:MSE:H2	1:F:1:MSE:H3	1.54	0.55
1:D:1:MSE:H1	1:E:1:MSE:N	2.05	0.54
1:B:1:MSE:N	1:C:1:MSE:H2	2.06	0.54
1:D:1:MSE:N	1:E:1:MSE:H3	2.06	0.54
1:A:1:MSE:N	1:B:1:MSE:N	2.56	0.53
1:F:119:MSE:CE	1:F:140:TYR:HB3	2.34	0.53

Continued on next page...

Continued from previous page...

Atom-1	Atom-2	Distance(Å)	Clash(Å)
1:B:1:MSE:H3	1:C:1:MSE:H2	1.56	0.52
1:E:148:ALA:HB3	1:F:53:ASP:HA	1.92	0.51
1:A:169:ARG:HD2	4:C:3229:HOH:O	2.10	0.51
1:B:1:MSE:N	1:C:1:MSE:N	2.59	0.51
1:A:53:ASP:HA	1:C:148:ALA:HB3	1.93	0.50
1:C:63:ALA:HB1	1:C:67:ARG:HH12	1.75	0.50
1:E:119:MSE:CE	1:E:140:TYR:HB3	2.37	0.50
1:A:119:MSE:CE	1:A:140:TYR:HB3	2.36	0.49
1:D:1:MSE:N	1:F:1:MSE:N	2.60	0.49
1:C:87:GLU:OE2	1:E:144:LYS:NZ	2.46	0.48
1:B:144:LYS:HE3	1:C:87:GLU:OE1	2.14	0.47
1:C:63:ALA:HB1	1:C:67:ARG:NH1	2.29	0.47
1:F:4:CYS:O	1:F:8:ILE:HG13	2.15	0.47
1:A:65:LEU:O	1:A:69:MSE:HG2	2.15	0.47
1:B:11:TRP:CH2	1:B:16:ARG:CZ	2.97	0.47
1:C:119:MSE:CE	1:C:140:TYR:HB3	2.41	0.47
1:D:5:ASP:O	1:D:9:GLU:HG3	2.15	0.46
1:A:1:MSE:H1	1:C:1:MSE:H2	1.61	0.46
1:B:150:ARG:NH1	1:C:53:ASP:OD2	2.48	0.46
1:A:36:ARG:HG2	1:A:152:GLY:O	2.16	0.45
1:D:1:MSE:N	1:F:1:MSE:H1	2.15	0.45
1:B:119:MSE:CE	1:B:140:TYR:HB3	2.37	0.44
1:D:18:SER:HB3	1:D:98:THR:HB	1.99	0.44
1:B:9:GLU:OE2	1:B:25:VAL:HG22	2.18	0.44
1:B:180:ARG:O	1:B:181:ASN:HB2	2.18	0.43
1:D:119:MSE:CE	1:D:140:TYR:HB3	2.38	0.43
1:F:65:LEU:O	1:F:69:MSE:HG2	2.19	0.42
1:E:6:ARG:HD2	1:E:6:ARG:HA	1.95	0.42
1:F:61:VAL:HG12	1:F:191:ASP:HB3	2.01	0.41
1:D:1:MSE:H2	1:E:1:MSE:H3	1.68	0.41
1:E:144:LYS:CE	1:F:87:GLU:OE1	2.67	0.41
1:D:1:MSE:N	1:E:1:MSE:H1	2.18	0.41
1:A:1:MSE:H3	1:C:1:MSE:H2	1.67	0.40

There are no symmetry-related clashes.

5.3 Torsion angles

5.3.1 Protein backbone ⓘ

In the following table, the Percentiles column shows the percent Ramachandran outliers of the chain as a percentile score with respect to all X-ray entries followed by that with respect to entries

of similar resolution. The Analysed column shows the number of residues for which the backbone conformation was analysed, and the total number of residues.

Mol	Chain	Analysed	Favoured	Allowed	Outliers	Percentiles	
1	A	191/193 (99%)	186 (97%)	5 (3%)	0	100	100
1	B	191/193 (99%)	187 (98%)	4 (2%)	0	100	100
1	C	191/193 (99%)	184 (96%)	6 (3%)	1 (0%)	38	60
1	D	191/193 (99%)	186 (97%)	5 (3%)	0	100	100
1	E	191/193 (99%)	184 (96%)	7 (4%)	0	100	100
1	F	191/193 (99%)	184 (96%)	7 (4%)	0	100	100
All	All	1146/1158 (99%)	1111 (97%)	34 (3%)	1 (0%)	59	81

All (1) Ramachandran outliers are listed below:

Mol	Chain	Res	Type
1	C	76	ASP

5.3.2 Protein sidechains ⓘ

In the following table, the Percentiles column shows the percent sidechain outliers of the chain as a percentile score with respect to all X-ray entries followed by that with respect to entries of similar resolution. The Analysed column shows the number of residues for which the sidechain conformation was analysed, and the total number of residues.

Mol	Chain	Analysed	Rotameric	Outliers	Percentiles	
1	A	157/153 (103%)	150 (96%)	7 (4%)	38	62
1	B	157/153 (103%)	150 (96%)	7 (4%)	38	62
1	C	157/153 (103%)	148 (94%)	9 (6%)	29	49
1	D	157/153 (103%)	149 (95%)	8 (5%)	33	55
1	E	157/153 (103%)	149 (95%)	8 (5%)	33	55
1	F	157/153 (103%)	150 (96%)	7 (4%)	38	62
All	All	942/918 (103%)	896 (95%)	46 (5%)	35	58

All (46) residues with a non-rotameric sidechain are listed below:

Mol	Chain	Res	Type
1	A	18	SER
1	A	36	ARG
1	A	71	ASP

Continued on next page...

Continued from previous page...

Mol	Chain	Res	Type
1	A	125	HIS
1	A	145	LEU
1	A	174	ARG
1	A	183	GLN
1	B	17	LEU
1	B	18	SER
1	B	59	ASP
1	B	62	SER
1	B	125	HIS
1	B	145	LEU
1	B	175	GLU
1	C	1	MSE
1	C	16	ARG
1	C	18	SER
1	C	26	GLU
1	C	59	ASP
1	C	60	GLU
1	C	77	GLU
1	C	125	HIS
1	C	145	LEU
1	D	1	MSE
1	D	17	LEU
1	D	60	GLU
1	D	62	SER
1	D	77	GLU
1	D	125	HIS
1	D	145	LEU
1	D	173	ARG
1	E	6	ARG
1	E	16	ARG
1	E	18	SER
1	E	42	ARG
1	E	77	GLU
1	E	125	HIS
1	E	145	LEU
1	E	192	LYS
1	F	1	MSE
1	F	6	ARG
1	F	14	GLU
1	F	55	SER
1	F	125	HIS
1	F	145	LEU

Continued on next page...

Continued from previous page...

Mol	Chain	Res	Type
1	F	175	GLU

Some sidechains can be flipped to improve hydrogen bonding and reduce clashes. All (5) such sidechains are listed below:

Mol	Chain	Res	Type
1	B	125	HIS
1	C	183	GLN
1	D	125	HIS
1	E	125	HIS
1	F	125	HIS

5.3.3 RNA ⓘ

There are no RNA chains in this entry.

5.4 Non-standard residues in protein, DNA, RNA chains ⓘ

There are no non-standard protein/DNA/RNA residues in this entry.

5.5 Carbohydrates ⓘ

There are no carbohydrates in this entry.

5.6 Ligand geometry ⓘ

Of 12 ligands modelled in this entry, 6 are monoatomic - leaving 6 for Mogul analysis.

In the following table, the Counts columns list the number of bonds (or angles) for which Mogul statistics could be retrieved, the number of bonds (or angles) that are observed in the model and the number of bonds (or angles) that are defined in the chemical component dictionary. The Link column lists molecule types, if any, to which the group is linked. The Z score for a bond length (or angle) is the number of standard deviations the observed value is removed from the expected value. A bond length (or angle) with $|Z| > 2$ is considered an outlier worth inspection. RMSZ is the root-mean-square of all Z scores of the bond lengths (or angles).

Mol	Type	Chain	Res	Link	Bond lengths			Bond angles		
					Counts	RMSZ	# Z > 2	Counts	RMSZ	# Z > 2
3	DCP	A	1194	2	29,29,29	1.25	3 (10%)	42,45,45	1.68	5 (11%)
3	DCP	B	2194	2	29,29,29	1.23	2 (6%)	42,45,45	1.73	5 (11%)

Mol	Type	Chain	Res	Link	Bond lengths			Bond angles		
					Counts	RMSZ	# Z > 2	Counts	RMSZ	# Z > 2
3	DCP	C	3194	2	29,29,29	1.06	3 (10%)	42,45,45	1.69	6 (14%)
3	DCP	D	4194	2	29,29,29	1.03	1 (3%)	42,45,45	1.77	6 (14%)
3	DCP	E	5194	2	29,29,29	1.48	4 (13%)	42,45,45	1.76	6 (14%)
3	DCP	F	6194	2	29,29,29	1.18	3 (10%)	42,45,45	1.58	7 (16%)

In the following table, the Chirals column lists the number of chiral outliers, the number of chiral centers analysed, the number of these observed in the model and the number defined in the chemical component dictionary. Similar counts are reported in the Torsion and Rings columns. '-' means no outliers of that kind were identified.

Mol	Type	Chain	Res	Link	Chirals	Torsions	Rings
3	DCP	A	1194	2	-	0/19/34/34	0/2/2/2
3	DCP	B	2194	2	-	0/19/34/34	0/2/2/2
3	DCP	C	3194	2	-	0/19/34/34	0/2/2/2
3	DCP	D	4194	2	-	0/19/34/34	0/2/2/2
3	DCP	E	5194	2	-	0/19/34/34	0/2/2/2
3	DCP	F	6194	2	-	0/19/34/34	0/2/2/2

All (16) bond length outliers are listed below:

Mol	Chain	Res	Type	Atoms	Z	Observed(Å)	Ideal(Å)
3	E	5194	DCP	C2-N1	5.49	1.44	1.38
3	B	2194	DCP	C2-N1	4.73	1.43	1.38
3	A	1194	DCP	C2-N1	4.52	1.43	1.38
3	F	6194	DCP	C2-N1	3.77	1.42	1.38
3	D	4194	DCP	C2-N1	3.44	1.42	1.38
3	C	3194	DCP	C2-N1	3.11	1.41	1.38
3	E	5194	DCP	PG-O3B	2.61	1.64	1.60
3	F	6194	DCP	PG-O1G	2.49	1.59	1.51
3	A	1194	DCP	PG-O1G	2.47	1.59	1.51
3	C	3194	DCP	PG-O1G	2.34	1.59	1.51
3	E	5194	DCP	PG-O1G	2.25	1.58	1.51
3	F	6194	DCP	PB-O1B	2.23	1.59	1.51
3	E	5194	DCP	PB-O1B	2.18	1.59	1.51
3	B	2194	DCP	PG-O1G	2.13	1.58	1.51
3	A	1194	DCP	PB-O1B	2.08	1.59	1.51
3	C	3194	DCP	PB-O1B	2.07	1.59	1.51

All (35) bond angle outliers are listed below:

Mol	Chain	Res	Type	Atoms	Z	Observed(°)	Ideal(°)
3	E	5194	DCP	C6-C5-C4	6.56	120.19	117.47
3	D	4194	DCP	C6-C5-C4	5.35	119.69	117.47
3	A	1194	DCP	O4'-C1'-N1	5.30	117.63	107.68
3	F	6194	DCP	O4'-C1'-N1	5.13	117.33	107.68
3	C	3194	DCP	C6-C5-C4	5.13	119.60	117.47
3	B	2194	DCP	O4'-C1'-N1	5.13	117.32	107.68
3	C	3194	DCP	O4'-C1'-N1	4.94	116.97	107.68
3	D	4194	DCP	O4'-C1'-N1	4.82	116.74	107.68
3	B	2194	DCP	C6-C5-C4	4.77	119.45	117.47
3	A	1194	DCP	C6-C5-C4	4.72	119.43	117.47
3	B	2194	DCP	C2-N3-C4	4.49	122.07	115.57
3	E	5194	DCP	O4'-C1'-N1	4.46	116.06	107.68
3	D	4194	DCP	C2-N3-C4	4.28	121.76	115.57
3	C	3194	DCP	C2-N3-C4	3.86	121.16	115.57
3	E	5194	DCP	C2-N3-C4	3.71	120.94	115.57
3	F	6194	DCP	C2-N3-C4	3.63	120.82	115.57
3	A	1194	DCP	C2-N3-C4	3.60	120.78	115.57
3	B	2194	DCP	PB-O3A-PA	-3.29	122.03	131.68
3	A	1194	DCP	C2'-C1'-N1	-3.27	105.60	114.08
3	B	2194	DCP	C2'-C1'-N1	-3.26	105.61	114.08
3	C	3194	DCP	C2'-C1'-N1	-3.25	105.65	114.08
3	D	4194	DCP	C2'-C1'-N1	-3.17	105.85	114.08
3	F	6194	DCP	C2'-C1'-N1	-3.11	106.01	114.08
3	D	4194	DCP	PB-O3A-PA	-3.07	122.67	131.68
3	F	6194	DCP	PB-O3B-PG	-3.05	122.75	131.68
3	E	5194	DCP	PB-O3B-PG	-2.81	123.45	131.68
3	A	1194	DCP	PB-O3B-PG	-2.75	123.63	131.68
3	F	6194	DCP	C6-C5-C4	2.74	118.61	117.47
3	E	5194	DCP	C2'-C1'-N1	-2.68	107.13	114.08
3	F	6194	DCP	C3'-C2'-C1'	2.40	108.87	102.47
3	C	3194	DCP	PB-O3A-PA	-2.38	124.69	131.68
3	E	5194	DCP	C3'-C2'-C1'	2.30	108.59	102.47
3	D	4194	DCP	PB-O3B-PG	-2.21	125.20	131.68
3	C	3194	DCP	PB-O3B-PG	-2.21	125.21	131.68
3	F	6194	DCP	O3G-PG-O3B	2.16	115.39	105.14

There are no chirality outliers.

There are no torsion outliers.

There are no ring outliers.

5.7 Other polymers ⓘ

There are no such residues in this entry.

5.8 Polymer linkage issues

There are no chain breaks in this entry.

6 Fit of model and data ⓘ

6.1 Protein, DNA and RNA chains ⓘ

In the following table, the column labelled ‘#RSRZ> 2’ contains the number (and percentage) of RSRZ outliers, followed by percent RSRZ outliers for the chain as percentile scores relative to all X-ray entries and entries of similar resolution. The OWAB column contains the minimum, median, 95th percentile and maximum values of the occupancy-weighted average B-factor per residue. The column labelled ‘Q< 0.9’ lists the number of (and percentage) of residues with an average occupancy less than 0.9.

Mol	Chain	Analysed	<RSRZ>	#RSRZ>2	OWAB(Å ²)	Q<0.9
1	A	193/193 (100%)	-0.26	2 (1%) 79 81	12, 19, 33, 43	0
1	B	193/193 (100%)	-0.33	5 (2%) 53 56	10, 19, 34, 47	0
1	C	193/193 (100%)	-0.28	1 (0%) 88 90	12, 19, 34, 44	0
1	D	193/193 (100%)	-0.27	5 (2%) 53 56	12, 19, 35, 47	0
1	E	193/193 (100%)	-0.33	1 (0%) 88 90	8, 19, 32, 40	0
1	F	193/193 (100%)	-0.33	2 (1%) 79 81	12, 19, 32, 44	0
All	All	1158/1158 (100%)	-0.30	16 (1%) 72 75	8, 19, 34, 47	0

All (16) RSRZ outliers are listed below:

Mol	Chain	Res	Type	RSRZ
1	B	183	GLN	4.7
1	D	183	GLN	3.7
1	A	181	ASN	3.7
1	D	181	ASN	3.4
1	B	181	ASN	3.3
1	F	77	GLU	3.0
1	A	183	GLN	2.9
1	F	181	ASN	2.9
1	B	77	GLU	2.6
1	B	76	ASP	2.3
1	D	77	GLU	2.3
1	C	77	GLU	2.2
1	D	78	GLY	2.1
1	B	59	ASP	2.1
1	E	183	GLN	2.0
1	D	76	ASP	2.0

6.2 Non-standard residues in protein, DNA, RNA chains ⓘ

There are no non-standard protein/DNA/RNA residues in this entry.

6.3 Carbohydrates ⓘ

There are no carbohydrates in this entry.

6.4 Ligands ⓘ

In the following table, the Atoms column lists the number of modelled atoms in the group and the number defined in the chemical component dictionary. LLDF column lists the quality of electron density of the group with respect to its neighbouring residues in protein, DNA or RNA chains. The B-factors column lists the minimum, median, 95th percentile and maximum values of B factors of atoms in the group. The column labelled 'Q< 0.9' lists the number of atoms with occupancy less than 0.9.

Mol	Type	Chain	Res	Atoms	RSR	LLDF	B-factors(Å ²)	Q<0.9
2	MG	F	4195	1/1	0.16	2.59	23,23,23,23	0
3	DCP	D	4194	28/28	0.10	-0.49	12,15,16,17	0
3	DCP	E	5194	28/28	0.10	-0.67	11,15,16,17	0
2	MG	A	2195	1/1	0.11	-0.83	23,23,23,23	0
3	DCP	C	3194	28/28	0.10	-0.83	12,15,16,17	0
3	DCP	B	2194	28/28	0.09	-0.84	12,15,16,17	0
3	DCP	F	6194	28/28	0.10	-0.87	11,15,16,17	0
3	DCP	A	1194	28/28	0.09	-1.04	11,15,16,17	0
2	MG	B	3195	1/1	0.08	-2.06	24,24,24,24	0
2	MG	E	6195	1/1	0.07	-2.29	23,23,23,23	0
2	MG	D	5195	1/1	0.08	-2.70	23,23,23,23	0
2	MG	C	1195	1/1	0.07	-2.73	24,24,24,24	0

6.5 Other polymers ⓘ

There are no such residues in this entry.