



wwPDB X-ray Structure Validation Summary Report i

Feb 28, 2014 – 10:01 PM GMT

PDB ID : 1XSI
Title : Structure of a Family 31 alpha glycosidase
Authors : Lovering, A.L.; Lee, S.S.; Kim, Y.W.; Withers, S.G.; Strynadka, N.C.
Deposited on : 2004-10-19
Resolution : 2.20 Å(reported)

This is a wwPDB validation summary report for a publicly released PDB entry.

We welcome your comments at validation@mail.wwpdb.org

A user guide is available at <http://wwpdb.org/ValidationPDFNotes.html>

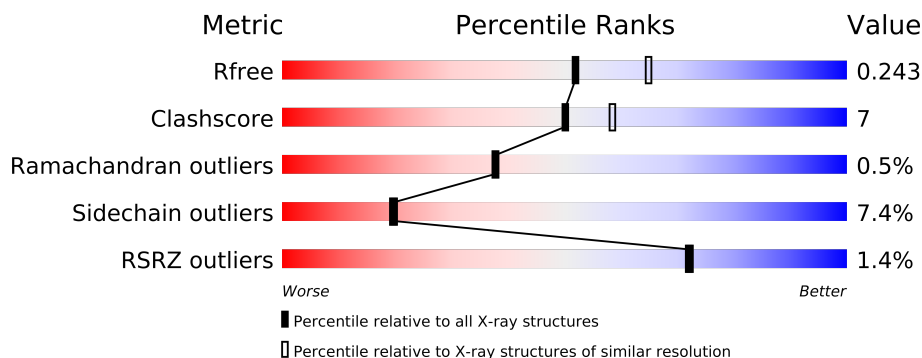
The following versions of software and data (see [references](#)) were used in the production of this report:

MolProbity	:	4.02b-467
Mogul	:	1.15 2013
Xtriage (Phenix)	:	dev-1323
EDS	:	stable22639
Percentile statistics	:	21963
Refmac	:	5.8.0049
CCP4	:	6.3.0 (Settle)
Ideal geometry (proteins)	:	Engh & Huber (2001)
Ideal geometry (DNA, RNA)	:	Parkinson et. al. (1996)
Validation Pipeline (wwPDB-VP)	:	stable22683

1 Overall quality at a glance

The reported resolution of this entry is 2.20 Å.

Percentile scores (ranging between 0-100) for global validation metrics of the entry are shown in the following graphic. The table shows the number of entries on which the scores are based.



Metric	Whole archive (#Entries)	Similar resolution (#Entries, resolution range(Å))
R_{free}	66092	2938 (2.20-2.20)
Clashscore	79885	3751 (2.20-2.20)
Ramachandran outliers	78287	3681 (2.20-2.20)
Sidechain outliers	78261	3682 (2.20-2.20)
RSRZ outliers	66119	2939 (2.20-2.20)

The table below summarises the geometric issues observed across the polymeric chains and their fit to the electron density. The red, orange, yellow and green segments on the lower bar indicate the fraction of residues that contain outliers for ≥ 3 , 2, 1 and 0 types of geometric quality criteria. The upper red bar (where present) indicates the fraction of residues that have poor fit to the electron density.

Mol	Chain	Length	Quality of chain
1	A	778	
1	B	778	
1	C	778	
1	D	778	
1	E	778	
1	F	778	

The following table lists non-polymeric compounds that are outliers for geometric or electron-density-fit criteria:

Mol	Type	Chain	Res	Geometry	Electron density
2	SO4	A	3014	-	X
2	SO4	A	3017	-	X

Continued on next page...

Continued from previous page...

Mol	Type	Chain	Res	Geometry	Electron density
2	SO4	A	3018	-	X
2	SO4	B	3008	-	X
2	SO4	B	3013	-	X
2	SO4	B	3015	-	X
2	SO4	B	3016	-	X
2	SO4	C	3007	-	X
2	SO4	C	3012	-	X
2	SO4	D	3011	-	X
2	SO4	E	3006	-	X
2	SO4	F	3001	-	X
2	SO4	F	3002	-	X
2	SO4	F	3003	-	X
2	SO4	F	3009	-	X
4	ACY	A	2003	-	X
4	ACY	E	2001	-	X
4	ACY	F	2002	-	X

2 Entry composition

There are 5 unique types of molecules in this entry. The entry contains 38490 atoms, of which 0 are hydrogen and 0 are deuterium.

In the tables below, the ZeroOcc column contains the number of atoms modelled with zero occupancy, the AltConf column contains the number of residues with at least one atom in alternate conformation and the Trace column contains the number of residues modelled with at most 2 atoms.

- Molecule 1 is a protein called Putative family 31 glucosidase yicI.

Mol	Chain	Residues	Atoms					ZeroOcc	AltConf	Trace
1	A	773	Total	C	N	O	S	0	0	0
			6226	3978	1069	1147	32			
1	B	773	Total	C	N	O	S	0	0	0
			6226	3978	1069	1147	32			
1	C	773	Total	C	N	O	S	0	0	0
			6226	3978	1069	1147	32			
1	D	773	Total	C	N	O	S	0	0	0
			6226	3978	1069	1147	32			
1	E	773	Total	C	N	O	S	0	0	0
			6226	3978	1069	1147	32			
1	F	773	Total	C	N	O	S	0	0	0
			6226	3978	1069	1147	32			

There are 36 discrepancies between the modelled and reference sequences:

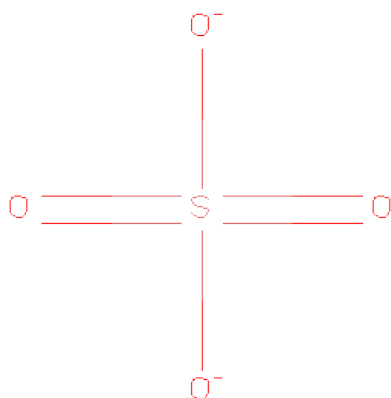
Chain	Residue	Modelled	Actual	Comment	Reference
A	773	HIS	-	EXPRESSION TAG	UNP P31434
A	774	HIS	-	EXPRESSION TAG	UNP P31434
A	775	HIS	-	EXPRESSION TAG	UNP P31434
A	776	HIS	-	EXPRESSION TAG	UNP P31434
A	777	HIS	-	EXPRESSION TAG	UNP P31434
A	778	HIS	-	EXPRESSION TAG	UNP P31434
B	773	HIS	-	EXPRESSION TAG	UNP P31434
B	774	HIS	-	EXPRESSION TAG	UNP P31434
B	775	HIS	-	EXPRESSION TAG	UNP P31434
B	776	HIS	-	EXPRESSION TAG	UNP P31434
B	777	HIS	-	EXPRESSION TAG	UNP P31434
B	778	HIS	-	EXPRESSION TAG	UNP P31434
C	773	HIS	-	EXPRESSION TAG	UNP P31434
C	774	HIS	-	EXPRESSION TAG	UNP P31434
C	775	HIS	-	EXPRESSION TAG	UNP P31434
C	776	HIS	-	EXPRESSION TAG	UNP P31434
C	777	HIS	-	EXPRESSION TAG	UNP P31434

Continued on next page...

Continued from previous page...

Chain	Residue	Modelled	Actual	Comment	Reference
C	778	HIS	-	EXPRESSION TAG	UNP P31434
D	773	HIS	-	EXPRESSION TAG	UNP P31434
D	774	HIS	-	EXPRESSION TAG	UNP P31434
D	775	HIS	-	EXPRESSION TAG	UNP P31434
D	776	HIS	-	EXPRESSION TAG	UNP P31434
D	777	HIS	-	EXPRESSION TAG	UNP P31434
D	778	HIS	-	EXPRESSION TAG	UNP P31434
E	773	HIS	-	EXPRESSION TAG	UNP P31434
E	774	HIS	-	EXPRESSION TAG	UNP P31434
E	775	HIS	-	EXPRESSION TAG	UNP P31434
E	776	HIS	-	EXPRESSION TAG	UNP P31434
E	777	HIS	-	EXPRESSION TAG	UNP P31434
E	778	HIS	-	EXPRESSION TAG	UNP P31434
F	773	HIS	-	EXPRESSION TAG	UNP P31434
F	774	HIS	-	EXPRESSION TAG	UNP P31434
F	775	HIS	-	EXPRESSION TAG	UNP P31434
F	776	HIS	-	EXPRESSION TAG	UNP P31434
F	777	HIS	-	EXPRESSION TAG	UNP P31434
F	778	HIS	-	EXPRESSION TAG	UNP P31434

- Molecule 2 is SULFATE ION (three-letter code: SO₄) (formula: O₄S).



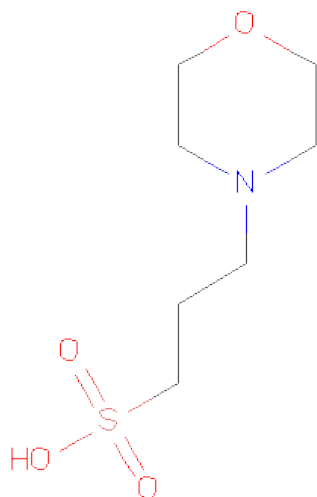
Mol	Chain	Residues	Atoms			ZeroOcc	AltConf
2	F	1	Total	O	S	0	0
			5	4	1		
2	F	1	Total	O	S	0	0
			5	4	1		

Continued on next page...

Continued from previous page...

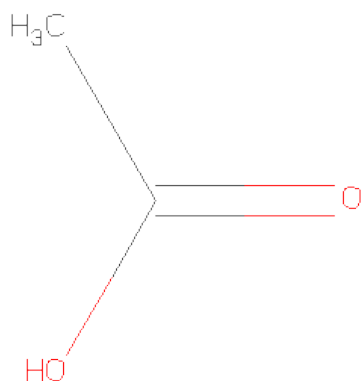
Mol	Chain	Residues	Atoms			ZeroOcc	AltConf
2	F	1	Total	O	S	0	0
			5	4	1		
2	D	1	Total	O	S	0	0
			5	4	1		
2	F	1	Total	O	S	0	0
			5	4	1		
2	E	1	Total	O	S	0	0
			5	4	1		
2	C	1	Total	O	S	0	0
			5	4	1		
2	B	1	Total	O	S	0	0
			5	4	1		
2	F	1	Total	O	S	0	0
			5	4	1		
2	B	1	Total	O	S	0	0
			5	4	1		
2	D	1	Total	O	S	0	0
			5	4	1		
2	C	1	Total	O	S	0	0
			5	4	1		
2	B	1	Total	O	S	0	0
			5	4	1		
2	A	1	Total	O	S	0	0
			5	4	1		
2	B	1	Total	O	S	0	0
			5	4	1		
2	B	1	Total	O	S	0	0
			5	4	1		
2	A	1	Total	O	S	0	0
			5	4	1		
2	A	1	Total	O	S	0	0
			5	4	1		

- Molecule 3 is 3[N-MORPHOLINO]PROPANESULFONIC ACID (three-letter code: MPO) (formula: C₇H₁₅NO₄S).



Mol	Chain	Residues	Atoms					ZeroOcc	AltConf
3	B	1	Total	C	N	O	S	0	0
			13	7	1	4	1		
3	C	1	Total	C	N	O	S	0	0
			13	7	1	4	1		
3	D	1	Total	C	N	O	S	0	0
			13	7	1	4	1		
3	E	1	Total	C	N	O	S	0	0
			13	7	1	4	1		

- Molecule 4 is ACETIC ACID (three-letter code: ACY) (formula: C₂H₄O₂).



Mol	Chain	Residues	Atoms	ZeroOcc	AltConf
4	E	1	Total C O 4 2 2	0	0
4	F	1	Total C O 4 2 2	0	0
4	A	1	Total C O 4 2 2	0	0

- Molecule 5 is water.

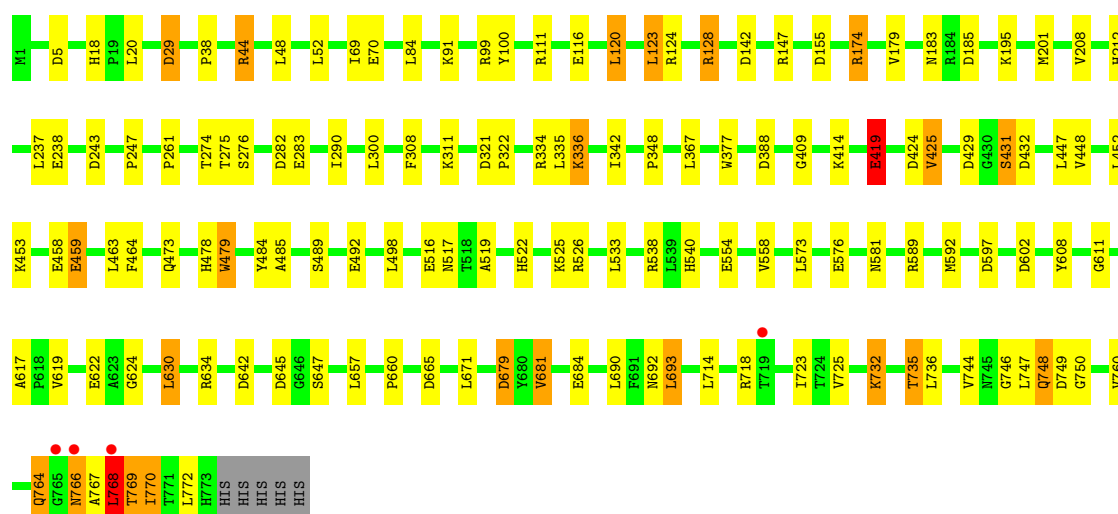
Mol	Chain	Residues	Atoms	ZeroOcc	AltConf
5	A	170	Total O 170 170	0	0
5	B	140	Total O 140 140	0	0
5	C	189	Total O 189 189	0	0
5	D	162	Total O 162 162	0	0
5	E	152	Total O 152 152	0	0
5	F	167	Total O 167 167	0	0

3 Residue-property plots

These plots are drawn for all protein, RNA and DNA chains in the entry. The first graphic for a chain summarises the proportions of errors displayed in the second graphic. The second graphic shows the sequence view annotated by issues in geometry and electron density. Residues are color-coded according to the number of geometric quality criteria for which they contain at least one outlier: green = 0, yellow = 1, orange = 2 and red = 3 or more. A red dot above a residue indicates a poor fit to the electron density ($RSRZ > 2$). Stretches of 2 or more consecutive residues without any outlier are shown as a green connector. Residues present in the sample, but not in the model, are shown in grey.

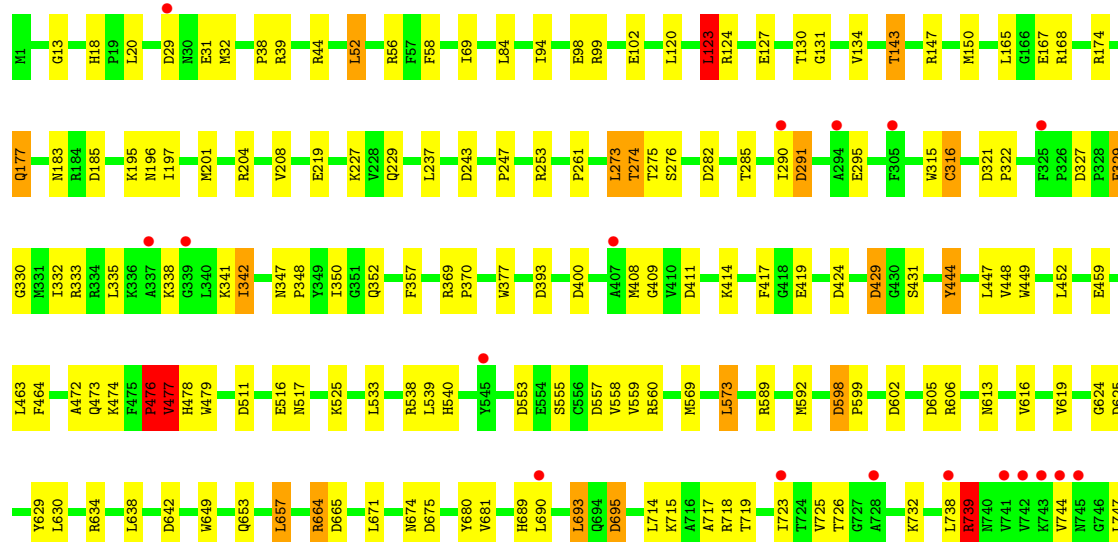
- Molecule 1: Putative family 31 glucosidase yicI

Chain A:



- Molecule 1: Putative family 31 glucosidase yicI

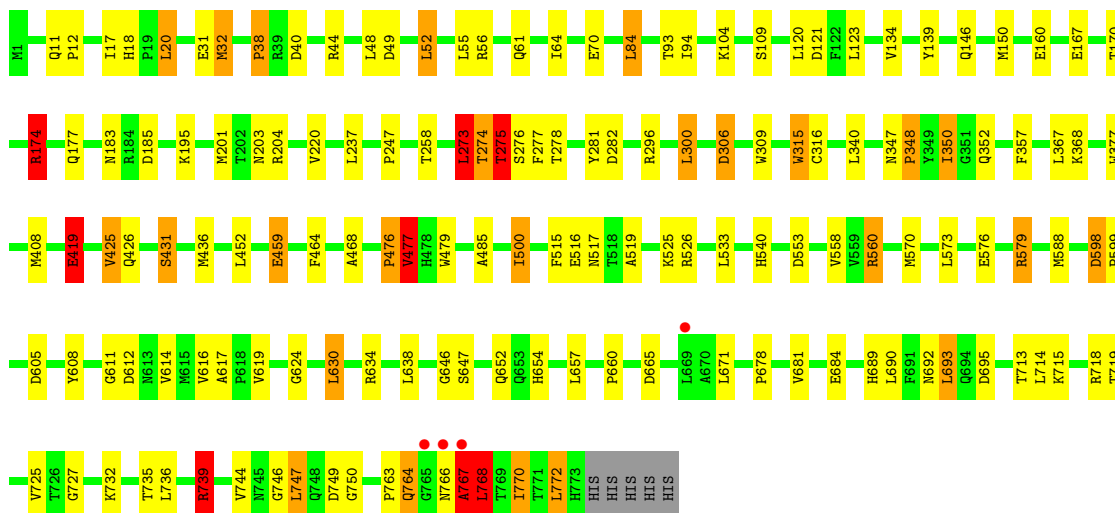
Chain B:





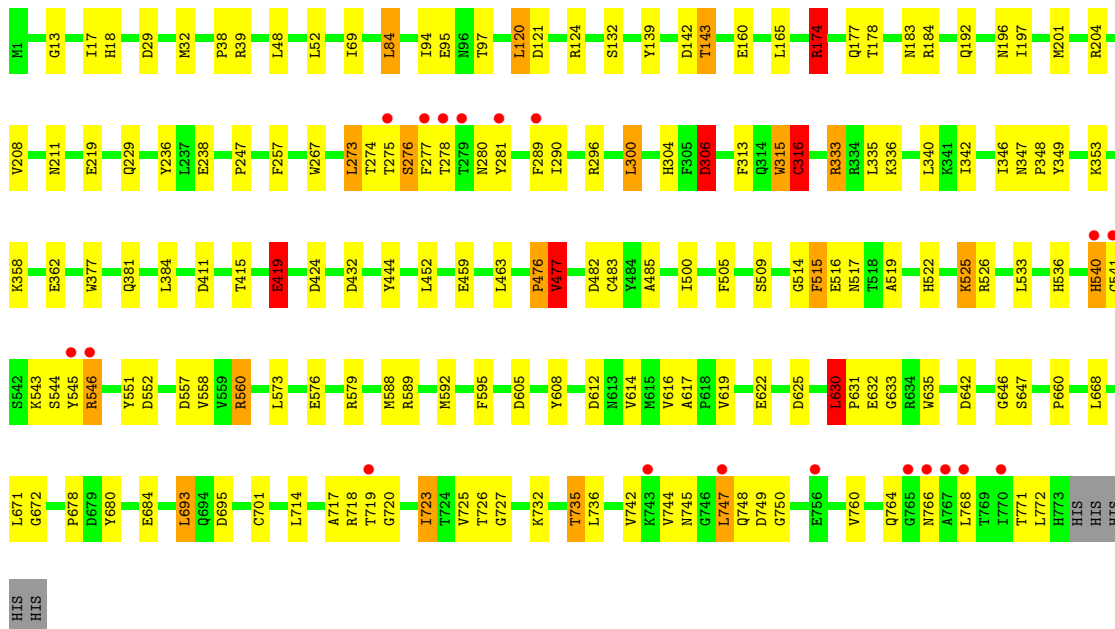
- Molecule 1: Putative family 31 glucosidase yicI

Chain C:



- Molecule 1: Putative family 31 glucosidase yicI

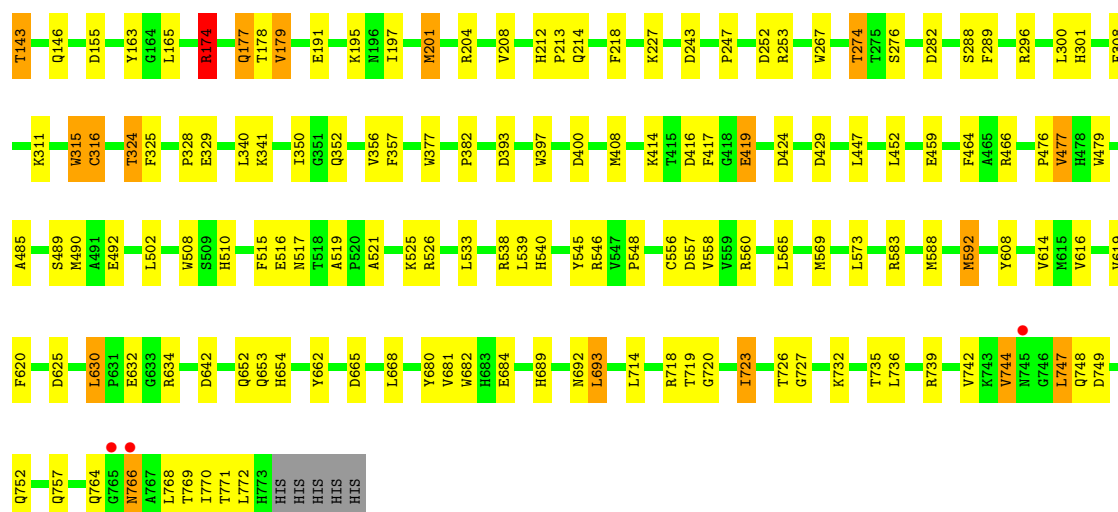
Chain D:



- Molecule 1: Putative family 31 glucosidase yicI

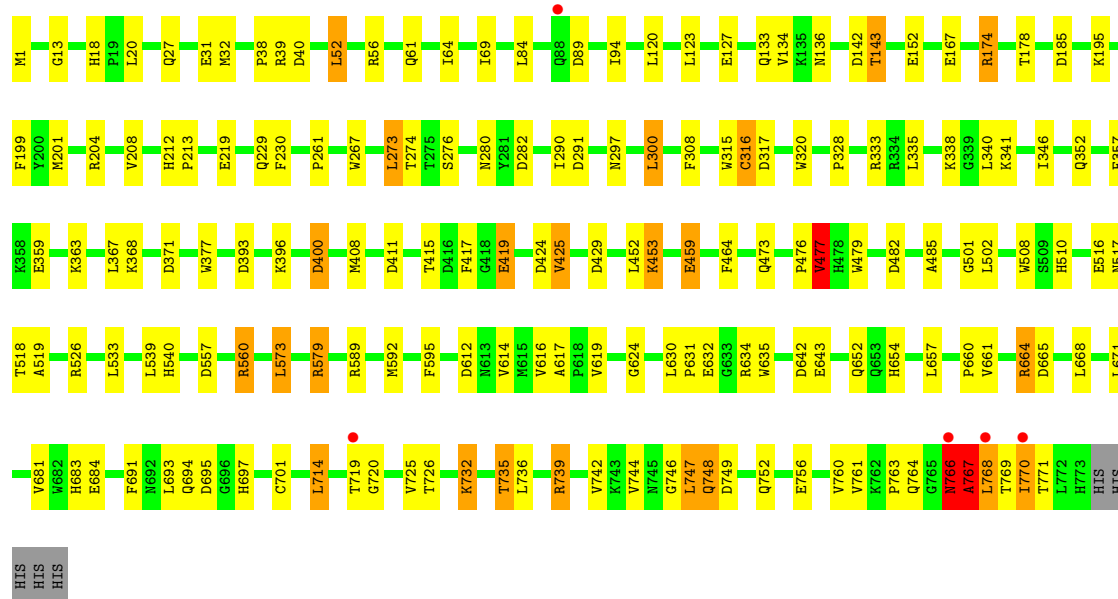
Chain E:





- Molecule 1: Putative family 31 glucosidase yici

Chain F:



4 Data and refinement statistics

Property	Value	Source
Space group	P 21 21 21	Depositor
Cell constants a, b, c, α , β , γ	161.69Å 174.93Å 209.51Å 90.00° 90.00° 90.00°	Depositor
Resolution (Å)	30.00 – 2.20 103.30 – 2.20	Depositor EDS
% Data completeness (in resolution range)	98.9 (30.00-2.20) 98.8 (103.30-2.20)	Depositor EDS
R_{merge}	0.07	Depositor
R_{sym}	0.07	Depositor
$\langle I/\sigma(I) \rangle$ ¹	2.16 (at 2.20Å)	Xtriage
Refinement program	CNS 1.1	Depositor
R, R_{free}	0.200 , 0.239 0.209 , 0.243	Depositor DCC
R_{free} test set	14932 reflections (5.05%)	DCC
Wilson B-factor (Å ²)	31.3	Xtriage
Anisotropy	0.714	Xtriage
Bulk solvent k_{sol} (e/Å ³), B_{sol} (Å ²)	0.34 , 19.7	EDS
Estimated twinning fraction	No twinning to report.	Xtriage
L-test for twinning	$\langle L \rangle = 0.50$, $\langle L^2 \rangle = 0.34$	Xtriage
Outliers	0 of 295701 reflections	Xtriage
F_o, F_c correlation	0.95	EDS
Total number of atoms	38490	wwPDB-VP
Average B, all atoms (Å ²)	34.0	wwPDB-VP

Xtriage's analysis on translational NCS is as follows: *The largest off-origin peak in the Patterson function is 2.55% of the height of the origin peak. No significant pseudotranslation is detected.*

¹Intensities estimated from amplitudes.

5 Model quality ⓘ

5.1 Standard geometry ⓘ

Bond lengths and bond angles in the following residue types are not validated in this section: MPO, ACY, SO4

The Z score for a bond length (or angle) is the number of standard deviations the observed value is removed from the expected value. A bond length (or angle) with $|Z| > 5$ is considered an outlier worth inspection. RMSZ is the root-mean-square of all Z scores of the bond lengths (or angles).

Mol	Chain	Bond lengths		Bond angles	
		RMSZ	# Z >5	RMSZ	# Z >5
1	A	0.90	0/6409	0.96	21/8711 (0.2%)
1	B	0.87	1/6409 (0.0%)	0.96	32/8711 (0.4%)
1	C	0.90	2/6409 (0.0%)	1.01	32/8711 (0.4%)
1	D	0.90	3/6409 (0.0%)	1.00	26/8711 (0.3%)
1	E	0.87	0/6409	0.95	20/8711 (0.2%)
1	F	0.95	2/6409 (0.0%)	1.00	35/8711 (0.4%)
All	All	0.90	8/38454 (0.0%)	0.98	166/52266 (0.3%)

Chiral center outliers are detected by calculating the chiral volume of a chiral center and verifying if the center is modelled as a planar moiety or with the opposite hand. A planarity outlier is detected by checking planarity of atoms in a peptide group, atoms in a mainchain group or atoms of a sidechain that are expected to be planar.

Mol	Chain	#Chirality outliers	#Planarity outliers
1	A	0	1
1	B	1	1
1	C	2	1
1	D	1	2
1	E	2	1
1	F	2	0
All	All	8	6

The worst 5 of 8 bond length outliers are listed below:

Mol	Chain	Res	Type	Atoms	Z	Observed(Å)	Ideal(Å)
1	D	306	ASP	CB-CG	9.89	1.72	1.51
1	C	32	MET	SD-CE	-5.94	1.44	1.77
1	F	661	VAL	CB-CG1	5.93	1.65	1.52
1	D	236	TYR	CD1-CE1	5.68	1.47	1.39
1	C	431	SER	CB-OG	-5.58	1.34	1.42

The worst 5 of 166 bond angle outliers are listed below:

Mol	Chain	Res	Type	Atoms	Z	Observed(°)	Ideal(°)
1	D	306	ASP	CB-CG-OD1	12.92	129.93	118.30
1	C	560	ARG	NE-CZ-NH1	-12.14	114.23	120.30
1	D	174	ARG	NE-CZ-NH1	10.51	125.55	120.30
1	E	174	ARG	NE-CZ-NH1	9.58	125.09	120.30
1	C	174	ARG	NE-CZ-NH2	-9.22	115.69	120.30

5 of 8 chirality outliers are listed below:

Mol	Chain	Res	Type	Atom
1	B	477	VAL	CA
1	C	316	CYS	CA
1	C	477	VAL	CA
1	D	477	VAL	CA
1	E	316	CYS	CA

5 of 6 planarity outliers are listed below:

Mol	Chain	Res	Type	Group
1	A	766	ASN	Peptide
1	B	476	PRO	Peptide
1	C	476	PRO	Peptide
1	D	315	TRP	Peptide
1	D	476	PRO	Peptide

5.2 Close contacts ⓘ

In the following table, the Non-H and H(model) columns list the number of non-hydrogen atoms and hydrogen atoms in the chain respectively. The H(added) column lists the number of hydrogens added by MolProbity. The Clashes column lists the number of clashes within the asymmetric unit, and the number in parentheses is this value normalized per 1000 atoms of the molecule in the chain. The Symm-Clashes column gives symmetry related clashes, in the same way as for the Clashes column.

Mol	Chain	Non-H	H(model)	H(added)	Clashes	Symm-Clashes
1	A	6226	0	5934	73	0
1	B	6226	0	5934	89	0
1	C	6226	0	5934	105	0
1	D	6226	0	5934	95	0
1	E	6226	0	5934	98	0
1	F	6226	0	5934	91	0
2	A	15	0	0	0	0

Continued on next page...

Continued from previous page...

Mol	Chain	Non-H	H(model)	H(added)	Clashes	Symm-Clashes
2	B	25	0	0	0	0
2	C	10	0	0	0	0
2	D	10	0	0	0	0
2	E	5	0	0	1	0
2	F	25	0	0	4	0
3	B	13	0	15	0	0
3	C	13	0	15	0	0
3	D	13	0	15	0	0
3	E	13	0	15	0	0
4	A	4	0	3	0	0
4	E	4	0	3	0	0
4	F	4	0	3	0	0
5	A	170	0	0	2	0
5	B	140	0	0	4	0
5	C	189	0	0	1	0
5	D	162	0	0	2	0
5	E	152	0	0	7	0
5	F	167	0	0	2	0
All	All	38490	0	35673	548	0

Clashscore is defined as the number of clashes calculated for the entry per 1000 atoms (including hydrogens) of the entry. The overall clashscore for this entry is 7.

The worst 5 of 548 close contacts within the same asymmetric unit are listed below.

Atom-1	Atom-2	Distance(Å)	Clash(Å)
1:C:32:MET:HE2	1:C:94:ILE:HG23	1.20	1.19
1:B:32:MET:HE2	1:B:94:ILE:HG23	1.23	1.17
1:F:274:THR:HG22	1:F:276:SER:H	0.98	1.10
1:B:274:THR:HG22	1:B:276:SER:H	1.13	1.10
1:E:274:THR:HG21	1:E:540:HIS:ND1	1.68	1.08

There are no symmetry-related clashes.

5.3 Torsion angles

5.3.1 Protein backbone ⓘ

In the following table, the Percentiles column shows the percent Ramachandran outliers of the chain as a percentile score with respect to all X-ray entries followed by that with respect to entries of similar resolution. The Analysed column shows the number of residues for which the backbone conformation was analysed, and the total number of residues.

Mol	Chain	Analysed	Favoured	Allowed	Outliers	Percentiles	
1	A	771/778 (99%)	744 (96%)	25 (3%)	2 (0%)	50	53
1	B	771/778 (99%)	731 (95%)	37 (5%)	3 (0%)	43	45
1	C	771/778 (99%)	740 (96%)	27 (4%)	4 (0%)	38	38
1	D	771/778 (99%)	733 (95%)	32 (4%)	6 (1%)	27	24
1	E	771/778 (99%)	738 (96%)	29 (4%)	4 (0%)	38	38
1	F	771/778 (99%)	739 (96%)	26 (3%)	6 (1%)	27	24
All	All	4626/4668 (99%)	4425 (96%)	176 (4%)	25 (0%)	38	38

5 of 25 Ramachandran outliers are listed below:

Mol	Chain	Res	Type
1	A	768	LEU
1	B	767	ALA
1	C	766	ASN
1	C	768	LEU
1	E	768	LEU

5.3.2 Protein sidechains ⓘ

In the following table, the Percentiles column shows the percent sidechain outliers of the chain as a percentile score with respect to all X-ray entries followed by that with respect to entries of similar resolution. The Analysed column shows the number of residues for which the sidechain conformation was analysed, and the total number of residues.

Mol	Chain	Analysed	Rotameric	Outliers	Percentiles	
1	A	659/665 (99%)	613 (93%)	46 (7%)	21	22
1	B	659/665 (99%)	613 (93%)	46 (7%)	21	22
1	C	659/665 (99%)	615 (93%)	44 (7%)	23	24
1	D	659/665 (99%)	608 (92%)	51 (8%)	18	18
1	E	659/665 (99%)	603 (92%)	56 (8%)	15	14
1	F	659/665 (99%)	608 (92%)	51 (8%)	18	18
All	All	3954/3990 (99%)	3660 (93%)	294 (7%)	20	19

5 of 294 residues with a non-rotameric sidechain are listed below:

Mol	Chain	Res	Type
1	C	764	GLN
1	D	545	TYR

Continued on next page...

Continued from previous page...

Mol	Chain	Res	Type
1	F	592	MET
1	D	48	LEU
1	D	306	ASP

Some sidechains can be flipped to improve hydrogen bonding and reduce clashes. 5 of 53 such sidechains are listed below:

Mol	Chain	Res	Type
1	C	697	HIS
1	D	381	GLN
1	F	652	GLN
1	C	764	GLN
1	D	107	ASN

5.3.3 RNA ⓘ

There are no RNA chains in this entry.

5.4 Non-standard residues in protein, DNA, RNA chains ⓘ

There are no non-standard protein/DNA/RNA residues in this entry.

5.5 Carbohydrates ⓘ

There are no carbohydrates in this entry.

5.6 Ligand geometry ⓘ

25 ligands are modelled in this entry.

In the following table, the Counts columns list the number of bonds (or angles) for which Mogul statistics could be retrieved, the number of bonds (or angles) that are observed in the model and the number of bonds (or angles) that are defined in the chemical component dictionary. The Link column lists molecule types, if any, to which the group is linked. The Z score for a bond length (or angle) is the number of standard deviations the observed value is removed from the expected value. A bond length (or angle) with $|Z| > 2$ is considered an outlier worth inspection. RMSZ is the root-mean-square of all Z scores of the bond lengths (or angles).

Mol	Type	Chain	Res	Link	Bond lengths			Bond angles		
					Counts	RMSZ	$\# Z > 2$	Counts	RMSZ	$\# Z > 2$
4	ACY	A	2003	-	3,3,3	0.77	0	3,3,3	0.93	0

Mol	Type	Chain	Res	Link	Bond lengths			Bond angles		
					Counts	RMSZ	# Z > 2	Counts	RMSZ	# Z > 2
2	SO4	A	3014	-	4,4,4	0.16	0	6,6,6	0.32	0
2	SO4	A	3017	-	4,4,4	0.22	0	6,6,6	0.30	0
2	SO4	A	3018	-	4,4,4	0.06	0	6,6,6	0.08	0
3	MPO	B	1001	-	13,13,13	1.71	1 (7%)	17,17,17	1.95	4 (23%)
2	SO4	B	3008	-	4,4,4	0.26	0	6,6,6	0.39	0
2	SO4	B	3010	-	4,4,4	0.15	0	6,6,6	0.29	0
2	SO4	B	3013	-	4,4,4	0.15	0	6,6,6	0.32	0
2	SO4	B	3015	-	4,4,4	0.22	0	6,6,6	0.23	0
2	SO4	B	3016	-	4,4,4	0.29	0	6,6,6	0.27	0
3	MPO	C	1002	-	13,13,13	1.41	2 (15%)	17,17,17	1.41	4 (23%)
2	SO4	C	3007	-	4,4,4	0.22	0	6,6,6	0.19	0
2	SO4	C	3012	-	4,4,4	0.25	0	6,6,6	0.55	0
3	MPO	D	1003	-	13,13,13	1.23	1 (7%)	17,17,17	1.63	4 (23%)
2	SO4	D	3004	-	4,4,4	0.25	0	6,6,6	0.37	0
2	SO4	D	3011	-	4,4,4	0.08	0	6,6,6	0.37	0
3	MPO	E	1004	-	13,13,13	1.79	2 (15%)	17,17,17	1.46	2 (11%)
4	ACY	E	2001	-	3,3,3	0.97	0	3,3,3	0.55	0
2	SO4	E	3006	-	4,4,4	0.11	0	6,6,6	0.44	0
4	ACY	F	2002	-	3,3,3	0.70	0	3,3,3	1.08	0
2	SO4	F	3001	-	4,4,4	0.35	0	6,6,6	0.19	0
2	SO4	F	3002	-	4,4,4	0.15	0	6,6,6	0.32	0
2	SO4	F	3003	-	4,4,4	0.21	0	6,6,6	0.57	0
2	SO4	F	3005	-	4,4,4	0.63	0	6,6,6	1.00	0
2	SO4	F	3009	-	4,4,4	0.30	0	6,6,6	0.29	0

In the following table, the Chirals column lists the number of chiral outliers, the number of chiral centers analysed, the number of these observed in the model and the number defined in the chemical component dictionary. Similar counts are reported in the Torsion and Rings columns. '-' means no outliers of that kind were identified.

Mol	Type	Chain	Res	Link	Chirals	Torsions	Rings
4	ACY	A	2003	-	-	0/0/0/0	0/0/0/0
2	SO4	A	3014	-	-	0/0/0/0	0/0/0/0
2	SO4	A	3017	-	-	0/0/0/0	0/0/0/0
2	SO4	A	3018	-	-	0/0/0/0	0/0/0/0
3	MPO	B	1001	-	-	0/7/15/15	0/1/1/1
2	SO4	B	3008	-	-	0/0/0/0	0/0/0/0
2	SO4	B	3010	-	-	0/0/0/0	0/0/0/0
2	SO4	B	3013	-	-	0/0/0/0	0/0/0/0
2	SO4	B	3015	-	-	0/0/0/0	0/0/0/0
2	SO4	B	3016	-	-	0/0/0/0	0/0/0/0
3	MPO	C	1002	-	-	0/7/15/15	0/1/1/1

Continued on next page...

Continued from previous page...

Mol	Type	Chain	Res	Link	Chirals	Torsions	Rings
2	SO4	C	3007	-	-	0/0/0/0	0/0/0/0
2	SO4	C	3012	-	-	0/0/0/0	0/0/0/0
3	MPO	D	1003	-	-	0/7/15/15	0/1/1/1
2	SO4	D	3004	-	-	0/0/0/0	0/0/0/0
2	SO4	D	3011	-	-	0/0/0/0	0/0/0/0
3	MPO	E	1004	-	-	0/7/15/15	0/1/1/1
4	ACY	E	2001	-	-	0/0/0/0	0/0/0/0
2	SO4	E	3006	-	-	0/0/0/0	0/0/0/0
4	ACY	F	2002	-	-	0/0/0/0	0/0/0/0
2	SO4	F	3001	-	-	0/0/0/0	0/0/0/0
2	SO4	F	3002	-	-	0/0/0/0	0/0/0/0
2	SO4	F	3003	-	-	0/0/0/0	0/0/0/0
2	SO4	F	3005	-	-	0/0/0/0	0/0/0/0
2	SO4	F	3009	-	-	0/0/0/0	0/0/0/0

The worst 5 of 6 bond length outliers are listed below:

Mol	Chain	Res	Type	Atoms	Z	Observed(Å)	Ideal(Å)
3	B	1001	MPO	C1-S1	5.07	1.85	1.77
3	E	1004	MPO	C1-S1	4.22	1.83	1.77
3	C	1002	MPO	C1-S1	3.91	1.83	1.77
3	D	1003	MPO	C1-S1	3.38	1.82	1.77
3	E	1004	MPO	O3-S1	2.90	1.53	1.46

The worst 5 of 14 bond angle outliers are listed below:

Mol	Chain	Res	Type	Atoms	Z	Observed(°)	Ideal(°)
3	B	1001	MPO	O1-S1-C1	5.46	111.49	106.81
3	E	1004	MPO	O2-S1-C1	4.11	110.33	106.81
3	D	1003	MPO	O2-S1-C1	3.88	110.14	106.81
3	B	1001	MPO	O2-S1-C1	3.04	109.42	106.81
3	D	1003	MPO	O4-C6-C7	-2.86	105.10	111.89

There are no chirality outliers.

There are no torsion outliers.

There are no ring outliers.

5.7 Other polymers ⓘ

There are no such residues in this entry.

5.8 Polymer linkage issues

There are no chain breaks in this entry.

6 Fit of model and data ⓘ

6.1 Protein, DNA and RNA chains ⓘ

In the following table, the column labelled ‘#RSRZ> 2’ contains the number (and percentage) of RSRZ outliers, followed by percent RSRZ outliers for the chain as percentile scores relative to all X-ray entries and entries of similar resolution. The OWAB column contains the minimum, median, 95th percentile and maximum values of the occupancy-weighted average B-factor per residue. The column labelled ‘Q< 0.9’ lists the number of (and percentage) of residues with an average occupancy less than 0.9.

Mol	Chain	Analysed	<RSRZ>	#RSRZ>2	OWAB(Å ²)	Q<0.9
1	A	773/778 (99%)	-0.36	4 (0%) 88 90	18, 29, 47, 71	0
1	B	773/778 (99%)	-0.04	24 (3%) 47 47	23, 36, 60, 81	0
1	C	773/778 (99%)	-0.34	4 (0%) 88 90	20, 30, 47, 75	0
1	D	773/778 (99%)	-0.10	19 (2%) 54 55	19, 32, 64, 78	0
1	E	773/778 (99%)	-0.23	7 (0%) 81 82	20, 33, 57, 89	0
1	F	773/778 (99%)	-0.36	5 (0%) 86 88	21, 31, 50, 69	0
All	All	4638/4668 (99%)	-0.24	63 (1%) 72 72	18, 32, 55, 89	0

The worst 5 of 63 RSRZ outliers are listed below:

Mol	Chain	Res	Type	RSRZ
1	B	765	GLY	7.1
1	D	278	THR	6.1
1	D	275	THR	5.7
1	D	765	GLY	5.4
1	B	767	ALA	5.4

6.2 Non-standard residues in protein, DNA, RNA chains ⓘ

There are no non-standard protein/DNA/RNA residues in this entry.

6.3 Carbohydrates ⓘ

There are no carbohydrates in this entry.

6.4 Ligands ⓘ

In the following table, the Atoms column lists the number of modelled atoms in the group and the number defined in the chemical component dictionary. LLDF column lists the quality of electron density of the group with respect to its neighbouring residues in protein, DNA or RNA chains. The B-factors column lists the minimum, median, 95th percentile and maximum values of B factors of atoms in the group. The column labelled 'Q< 0.9' lists the number of atoms with occupancy less than 0.9.

Mol	Type	Chain	Res	Atoms	RSR	LLDF	B-factors(Å ²)	Q<0.9
2	SO4	F	3009	5/5	0.22	58.33	64,66,68,69	0
2	SO4	B	3013	5/5	0.20	38.60	77,78,79,80	0
2	SO4	A	3018	5/5	0.16	22.00	84,85,85,86	0
2	SO4	F	3002	5/5	0.20	10.21	60,63,65,66	0
2	SO4	B	3015	5/5	0.23	9.05	79,81,82,82	0
2	SO4	D	3011	5/5	0.17	9.00	86,87,88,88	0
2	SO4	B	3016	5/5	0.19	6.36	72,72,73,75	0
2	SO4	A	3017	5/5	0.25	6.23	73,75,77,78	0
2	SO4	A	3014	5/5	0.17	6.11	78,79,80,82	0
2	SO4	C	3012	5/5	0.14	5.79	66,66,69,70	0
2	SO4	F	3001	5/5	0.16	4.91	65,66,67,68	0
4	ACY	F	2002	4/4	0.15	4.23	46,46,47,48	0
2	SO4	C	3007	5/5	0.20	3.63	61,62,63,63	0
2	SO4	F	3003	5/5	0.21	3.07	57,57,59,60	0
2	SO4	E	3006	5/5	0.15	2.80	56,58,59,62	0
4	ACY	E	2001	4/4	0.15	2.62	38,39,41,41	0
2	SO4	B	3008	5/5	0.25	2.48	59,61,62,63	0
4	ACY	A	2003	4/4	0.13	2.37	40,40,42,42	0
2	SO4	B	3010	5/5	0.23	1.76	76,77,77,78	0
2	SO4	F	3005	5/5	0.15	0.94	50,53,56,56	0
2	SO4	D	3004	5/5	0.14	0.84	65,65,66,67	0
3	MPO	E	1004	13/13	0.13	0.69	51,53,58,58	0
3	MPO	D	1003	13/13	0.14	0.39	43,52,58,58	0
3	MPO	C	1002	13/13	0.11	0.18	43,48,53,55	0
3	MPO	B	1001	13/13	0.14	0.07	46,54,64,66	0

6.5 Other polymers ⓘ

There are no such residues in this entry.