



# Full wwPDB X-ray Structure Validation Report ⓘ

Feb 28, 2014 – 01:22 PM GMT

PDB ID : 2XTZ  
Title : CRYSTAL STRUCTURE OF THE G ALPHA PROTEIN ATGPA1 FROM ARABIDOPSIS THALIANA  
Authors : Jones, J.C.; Duffy, J.W.; Machius, M.; Temple, B.R.S.; Dohlman, H.G.; Jones, A.M.  
Deposited on : 2010-10-13  
Resolution : 2.34 Å(reported)

This is a full wwPDB validation report for a publicly released PDB entry.  
We welcome your comments at [validation@mail.wwpdb.org](mailto:validation@mail.wwpdb.org)  
A user guide is available at <http://wwpdb.org/ValidationPDFNotes.html>

---

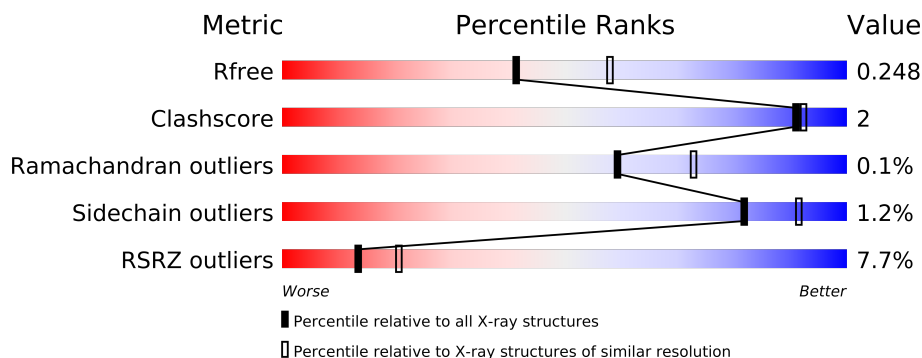
The following versions of software and data (see [references](#)) were used in the production of this report:

MolProbity : 4.02b-467  
Mogul : 1.15 2013  
Xtriage (Phenix) : dev-1323  
EDS : stable22639  
Percentile statistics : 21963  
Refmac : 5.8.0049  
CCP4 : 6.3.0 (Settle)  
Ideal geometry (proteins) : Engh & Huber (2001)  
Ideal geometry (DNA, RNA) : Parkinson et. al. (1996)  
Validation Pipeline (wwPDB-VP) : stable22683

# 1 Overall quality at a glance

The reported resolution of this entry is 2.34 Å.

Percentile scores (ranging between 0-100) for global validation metrics of the entry are shown in the following graphic. The table shows the number of entries on which the scores are based.



Metric	Whole archive (#Entries)	Similar resolution (#Entries, resolution range(Å))
$R_{free}$	66092	4049 (2.38-2.30)
Clashscore	79885	1094 (2.36-2.32)
Ramachandran outliers	78287	1080 (2.36-2.32)
Sidechain outliers	78261	1081 (2.36-2.32)
RSRZ outliers	66119	4050 (2.38-2.30)

The table below summarises the geometric issues observed across the polymeric chains and their fit to the electron density. The red, orange, yellow and green segments on the lower bar indicate the fraction of residues that contain outliers for  $\geq 3$ , 2, 1 and 0 types of geometric quality criteria. The upper red bar (where present) indicates the fraction of residues that have poor fit to the electron density.

Mol	Chain	Length	Quality of chain
1	A	354	
1	B	354	
1	C	354	

## 2 Entry composition

There are 6 unique types of molecules in this entry. The entry contains 7909 atoms, of which 0 are hydrogen and 0 are deuterium.

In the tables below, the ZeroOcc column contains the number of atoms modelled with zero occupancy, the AltConf column contains the number of residues with at least one atom in alternate conformation and the Trace column contains the number of residues modelled with at most 2 atoms.

- Molecule 1 is a protein called GUANINE NUCLEOTIDE-BINDING PROTEIN ALPHA-1 SUBUNIT.

Mol	Chain	Residues	Atoms					ZeroOcc	AltConf	Trace
1	A	343	Total	C	N	O	S	0	3	0
			2838	1818	479	528	13			
1	B	291	Total	C	N	O	S	0	0	0
			2431	1573	405	444	9			
1	C	270	Total	C	N	O	S	0	0	0
			2263	1470	378	406	9			

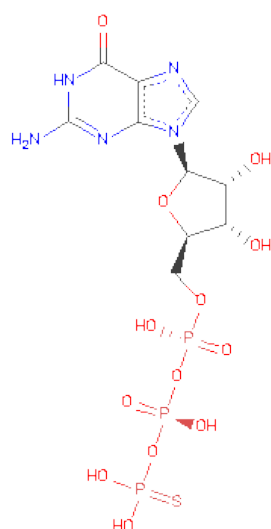
There are 21 discrepancies between the modelled and reference sequences:

Chain	Residue	Modelled	Actual	Comment	Reference
A	30	GLY	-	EXPRESSION TAG	UNP P18064
A	31	ALA	-	EXPRESSION TAG	UNP P18064
A	32	MET	-	EXPRESSION TAG	UNP P18064
A	33	GLY	-	EXPRESSION TAG	UNP P18064
A	34	SER	-	EXPRESSION TAG	UNP P18064
A	35	GLY	-	EXPRESSION TAG	UNP P18064
A	36	ILE	-	EXPRESSION TAG	UNP P18064
B	30	GLY	-	EXPRESSION TAG	UNP P18064
B	31	ALA	-	EXPRESSION TAG	UNP P18064
B	32	MET	-	EXPRESSION TAG	UNP P18064
B	33	GLY	-	EXPRESSION TAG	UNP P18064
B	34	SER	-	EXPRESSION TAG	UNP P18064
B	35	GLY	-	EXPRESSION TAG	UNP P18064
B	36	ILE	-	EXPRESSION TAG	UNP P18064
C	30	GLY	-	EXPRESSION TAG	UNP P18064
C	31	ALA	-	EXPRESSION TAG	UNP P18064
C	32	MET	-	EXPRESSION TAG	UNP P18064
C	33	GLY	-	EXPRESSION TAG	UNP P18064
C	34	SER	-	EXPRESSION TAG	UNP P18064
C	35	GLY	-	EXPRESSION TAG	UNP P18064
C	36	ILE	-	EXPRESSION TAG	UNP P18064

- Molecule 2 is MAGNESIUM ION (three-letter code: MG) (formula: Mg).

Mol	Chain	Residues	Atoms		ZeroOcc	AltConf
2	B	1	Total	Mg	0	0
			1	1		
2	A	1	Total	Mg	0	0
			1	1		
2	C	1	Total	Mg	0	0
			1	1		

- Molecule 3 is 5'-GUANOSINE-DIPHOSPHATE-MONOTHIOPHOSPHATE (three-letter code: GSP) (formula: C<sub>10</sub>H<sub>16</sub>N<sub>5</sub>O<sub>13</sub>P<sub>3</sub>S).



Mol	Chain	Residues	Atoms						ZeroOcc	AltConf
3	A	1	Total	C	N	O	P	S	0	0
			32	10	5	13	3	1		
3	B	1	Total	C	N	O	P	S	0	0
			32	10	5	13	3	1		
3	C	1	Total	C	N	O	P	S	0	0
			32	10	5	13	3	1		

- Molecule 4 is CHLORIDE ION (three-letter code: CL) (formula: Cl).

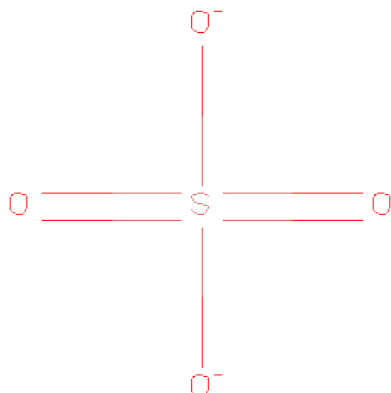
Mol	Chain	Residues	Atoms		ZeroOcc	AltConf
4	B	2	Total	Cl	0	0
			2	2		
4	A	1	Total	Cl	0	0
			1	1		

*Continued on next page...*

Continued from previous page...

Mol	Chain	Residues	Atoms	ZeroOcc	AltConf
4	C	1	Total Cl 1 1	0	0

- Molecule 5 is SULFATE ION (three-letter code: SO<sub>4</sub>) (formula: O<sub>4</sub>S).



Mol	Chain	Residues	Atoms	ZeroOcc	AltConf
5	A	1	Total O S 5 4 1	0	0
5	B	1	Total O S 5 4 1	0	0
5	C	1	Total O S 5 4 1	0	0
5	C	1	Total O S 5 4 1	0	0
5	C	1	Total O S 5 4 1	0	0

- Molecule 6 is water.

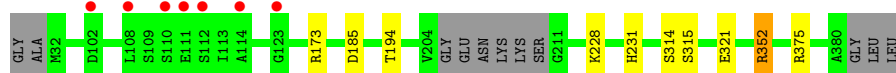
Mol	Chain	Residues	Atoms	ZeroOcc	AltConf
6	A	139	Total O 139 139	0	0
6	B	69	Total O 69 69	0	0
6	C	41	Total O 41 41	0	0

### 3 Residue-property plots

These plots are drawn for all protein, RNA and DNA chains in the entry. The first graphic for a chain summarises the proportions of errors displayed in the second graphic. The second graphic shows the sequence view annotated by issues in geometry and electron density. Residues are color-coded according to the number of geometric quality criteria for which they contain at least one outlier: green = 0, yellow = 1, orange = 2 and red = 3 or more. A red dot above a residue indicates a poor fit to the electron density ( $RSRZ > 2$ ). Stretches of 2 or more consecutive residues without any outlier are shown as a green connector. Residues present in the sample, but not in the model, are shown in grey.

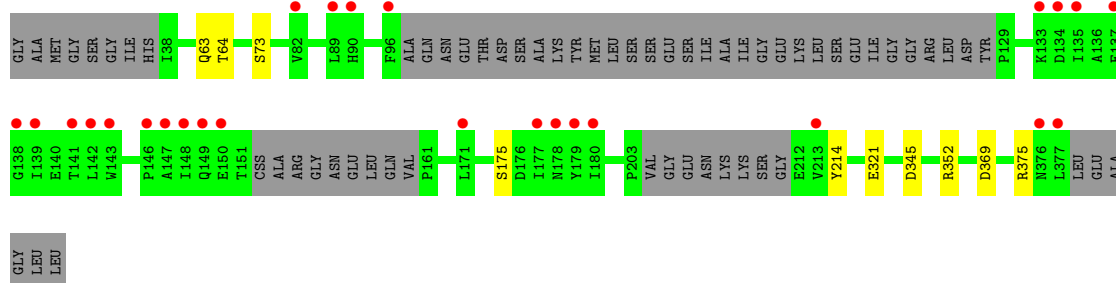
#### • Molecule 1: GUANINE NUCLEOTIDE-BINDING PROTEIN ALPHA-1 SUBUNIT

Chain A: 



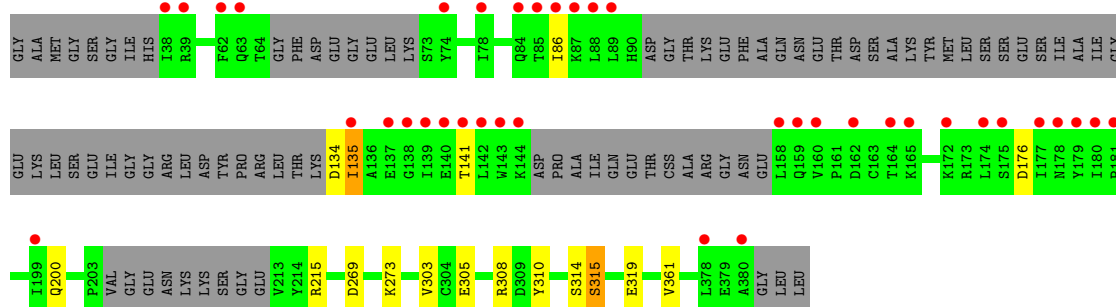
#### • Molecule 1: GUANINE NUCLEOTIDE-BINDING PROTEIN ALPHA-1 SUBUNIT

Chain B: 



#### • Molecule 1: GUANINE NUCLEOTIDE-BINDING PROTEIN ALPHA-1 SUBUNIT

Chain C: 



## 4 Data and refinement statistics

Property	Value	Source
Space group	P 21 21 21	Depositor
Cell constants a, b, c, $\alpha$ , $\beta$ , $\gamma$	67.13Å 119.35Å 161.72Å 90.00° 90.00° 90.00°	Depositor
Resolution (Å)	96.03 – 2.34 44.60 – 2.34	Depositor EDS
% Data completeness (in resolution range)	99.9 (96.03-2.34) 94.0 (44.60-2.34)	Depositor EDS
$R_{merge}$	0.11	Depositor
$R_{sym}$	(Not available)	Depositor
$\langle I/\sigma(I) \rangle$ <sup>1</sup>	2.87 (at 2.34Å)	Xtriage
Refinement program	REFMAC 5.5.0109	Depositor
R, $R_{free}$	0.211 , 0.254 0.206 , 0.248	Depositor DCC
$R_{free}$ test set	1426 reflections (2.80%)	DCC
Wilson B-factor (Å <sup>2</sup> )	31.9	Xtriage
Anisotropy	0.377	Xtriage
Bulk solvent $k_{sol}$ (e/Å <sup>3</sup> ), $B_{sol}$ (Å <sup>2</sup> )	0.34 , 29.7	EDS
Estimated twinning fraction	No twinning to report.	Xtriage
L-test for twinning	$\langle  L  \rangle = 0.50$ , $\langle L^2 \rangle = 0.33$	Xtriage
Outliers	0 of 55736 reflections	Xtriage
$F_o, F_c$ correlation	0.93	EDS
Total number of atoms	7909	wwPDB-VP
Average B, all atoms (Å <sup>2</sup> )	44.0	wwPDB-VP

Xtriage's analysis on translational NCS is as follows: *The largest off-origin peak in the Patterson function is 3.86% of the height of the origin peak. No significant pseudotranslation is detected.*

<sup>1</sup>Intensities estimated from amplitudes.

## 5 Model quality

### 5.1 Standard geometry

Bond lengths and bond angles in the following residue types are not validated in this section: GSP, MG, SO4, CSS, CL

The Z score for a bond length (or angle) is the number of standard deviations the observed value is removed from the expected value. A bond length (or angle) with  $|Z| > 5$  is considered an outlier worth inspection. RMSZ is the root-mean-square of all Z scores of the bond lengths (or angles).

Mol	Chain	Bond lengths		Bond angles	
		RMSZ	$\# Z  > 5$	RMSZ	$\# Z  > 5$
1	A	0.55	0/2878	0.63	0/3872
1	B	0.54	0/2473	0.60	0/3325
1	C	0.50	0/2300	0.60	0/3094
All	All	0.53	0/7651	0.61	0/10291

There are no bond length outliers.

There are no bond angle outliers.

There are no chirality outliers.

There are no planarity outliers.

### 5.2 Close contacts

In the following table, the Non-H and H(model) columns list the number of non-hydrogen atoms and hydrogen atoms in the chain respectively. The H(added) column lists the number of hydrogens added by MolProbity. The Clashes column lists the number of clashes within the asymmetric unit, and the number in parentheses is this value normalized per 1000 atoms of the molecule in the chain. The Symm-Clashes column gives symmetry related clashes, in the same way as for the Clashes column.

Mol	Chain	Non-H	H(model)	H(added)	Clashes	Symm-Clashes
1	A	2838	0	0	5	0
1	B	2431	0	0	4	0
1	C	2263	0	0	6	0
2	A	1	0	0	0	0
2	B	1	0	0	0	0
2	C	1	0	0	0	0
3	A	32	0	0	0	0
3	B	32	0	0	0	0
3	C	32	0	0	0	0

*Continued on next page...*

*Continued from previous page...*

Mol	Chain	Non-H	H(model)	H(added)	Clashes	Symm-Clashes
4	A	1	0	0	0	0
4	B	2	0	0	0	0
4	C	1	0	0	0	0
5	A	5	0	0	0	0
5	B	5	0	0	0	0
5	C	15	0	0	0	0
6	A	139	0	0	1	0
6	B	69	0	0	0	0
6	C	41	0	0	0	0
All	All	7909	0	0	15	0

Clashscore is defined as the number of clashes calculated for the entry per 1000 atoms (including hydrogens) of the entry. The overall clashscore for this entry is 2.

All (15) close contacts within the same asymmetric unit are listed below.

Atom-1	Atom-2	Distance(Å)	Clash(Å)
1:B:321:GLU:OE2	1:B:352:ARG:NH2	2.35	0.58
1:A:173:ARG:NH1	1:A:185:ASP:OD1	2.40	0.54
1:C:134:ASP:CG	1:C:135:ILE:N	2.65	0.51
1:C:310:TYR:OH	1:C:319:GLU:OE2	2.31	0.49
1:A:375:ARG:NH2	6:A:2134:HOH:O	2.47	0.48
1:B:63:GLN:CG	1:B:64:THR:N	2.77	0.48
1:C:314:SER:OG	1:C:315:SER:N	2.48	0.46
1:A:194:THR:O	1:A:228:LYS:NZ	2.48	0.46
1:C:305:GLU:O	1:C:308:ARG:CG	2.64	0.45
1:A:314:SER:OG	1:A:315:SER:N	2.49	0.44
1:C:200:GLN:OE1	1:C:215:ARG:NH1	2.51	0.43
1:C:269:ASP:OD1	1:C:273:LYS:NZ	2.51	0.43
1:B:345:ASP:O	1:B:375:ARG:NH2	2.53	0.42
1:B:214:TYR:OH	1:B:369:ASP:OD1	2.38	0.41
1:A:321:GLU:OE1	1:A:352:ARG:NH1	2.54	0.41

There are no symmetry-related clashes.

## 5.3 Torsion angles

### 5.3.1 Protein backbone ⓘ

In the following table, the Percentiles column shows the percent Ramachandran outliers of the chain as a percentile score with respect to all X-ray entries followed by that with respect to entries

of similar resolution. The Analysed column shows the number of residues for which the backbone conformation was analysed, and the total number of residues.

Mol	Chain	Analysed	Favoured	Allowed	Outliers	Percentiles	
1	A	340/354 (96%)	335 (98%)	5 (2%)	0	100	100
1	B	282/354 (80%)	278 (99%)	4 (1%)	0	100	100
1	C	259/354 (73%)	250 (96%)	8 (3%)	1 (0%)	43	50
All	All	881/1062 (83%)	863 (98%)	17 (2%)	1 (0%)	59	73

All (1) Ramachandran outliers are listed below:

Mol	Chain	Res	Type
1	C	135	ILE

### 5.3.2 Protein sidechains ⓘ

In the following table, the Percentiles column shows the percent sidechain outliers of the chain as a percentile score with respect to all X-ray entries followed by that with respect to entries of similar resolution. The Analysed column shows the number of residues for which the sidechain conformation was analysed, and the total number of residues.

Mol	Chain	Analysed	Rotameric	Outliers	Percentiles	
1	A	308/313 (98%)	306 (99%)	2 (1%)	92	97
1	B	267/313 (85%)	265 (99%)	2 (1%)	91	96
1	C	249/313 (80%)	243 (98%)	6 (2%)	61	76
All	All	824/939 (88%)	814 (99%)	10 (1%)	82	91

All (10) residues with a non-rotameric sidechain are listed below:

Mol	Chain	Res	Type
1	A	231	HIS
1	A	352	ARG
1	B	73	SER
1	B	175	SER
1	C	86	ILE
1	C	141	THR
1	C	176	ASP
1	C	303	VAL
1	C	315	SER
1	C	361	VAL

Some sidechains can be flipped to improve hydrogen bonding and reduce clashes. There are no such sidechains identified.

### 5.3.3 RNA ⓘ

There are no RNA chains in this entry.

## 5.4 Non-standard residues in protein, DNA, RNA chains ⓘ

4 non-standard protein/DNA/RNA residues are modelled in this entry.

In the following table, the Counts columns list the number of bonds (or angles) for which Mogul statistics could be retrieved, the number of bonds (or angles) that are observed in the model and the number of bonds (or angles) that are defined in the chemical component dictionary. The Link column lists molecule types, if any, to which the group is linked. The Z score for a bond length (or angle) is the number of standard deviations the observed value is removed from the expected value. A bond length (or angle) with  $|Z| > 2$  is considered an outlier worth inspection. RMSZ is the root-mean-square of all Z scores of the bond lengths (or angles).

Mol	Type	Chain	Res	Link	Bond lengths			Bond angles		
					Counts	RMSZ	# Z  > 2	Counts	RMSZ	# Z  > 2
1	CSS	A	152	1	5,6,7	7.75	2 (40%)	4,6,8	1.38	1 (25%)
1	CSS	A	163	1	5,6,7	8.05	2 (40%)	4,6,8	1.44	0
1	CSS	B	163	1	5,6,7	7.98	2 (40%)	4,6,8	1.90	1 (25%)
1	CSS	C	163	1	5,6,7	8.45	2 (40%)	4,6,8	0.86	0

In the following table, the Chirals column lists the number of chiral outliers, the number of chiral centers analysed, the number of these observed in the model and the number defined in the chemical component dictionary. Similar counts are reported in the Torsion and Rings columns. '-' means no outliers of that kind were identified.

Mol	Type	Chain	Res	Link	Chirals	Torsions	Rings
1	CSS	A	152	1	-	0/2/5/7	0/0/0/0
1	CSS	A	163	1	-	0/2/5/7	0/0/0/0
1	CSS	B	163	1	-	0/2/5/7	0/0/0/0
1	CSS	C	163	1	-	0/2/5/7	0/0/0/0

All (8) bond length outliers are listed below:

Mol	Chain	Res	Type	Atoms	Z	Observed(Å)	Ideal(Å)
1	C	163	CSS	O-C	18.72	1.24	1.11
1	A	163	CSS	O-C	17.78	1.23	1.11
1	B	163	CSS	O-C	17.61	1.23	1.11

*Continued on next page...*

Continued from previous page...

Mol	Chain	Res	Type	Atoms	Z	Observed(Å)	Ideal(Å)
1	A	152	CSS	O-C	17.11	1.23	1.11
1	A	152	CSS	CA-C	2.41	1.52	1.48
1	A	163	CSS	CA-C	2.24	1.52	1.48
1	C	163	CSS	CA-C	2.19	1.52	1.48
1	B	163	CSS	CA-C	2.18	1.52	1.48

All (2) bond angle outliers are listed below:

Mol	Chain	Res	Type	Atoms	Z	Observed(°)	Ideal(°)
1	B	163	CSS	CB-CA-N	-3.60	104.16	110.27
1	A	152	CSS	C-CA-N	-2.66	111.17	113.83

There are no chirality outliers.

There are no torsion outliers.

There are no ring outliers.

## 5.5 Carbohydrates ⓘ

There are no carbohydrates in this entry.

## 5.6 Ligand geometry ⓘ

Of 15 ligands modelled in this entry, 7 are monoatomic - leaving 8 for Mogul analysis.

In the following table, the Counts columns list the number of bonds (or angles) for which Mogul statistics could be retrieved, the number of bonds (or angles) that are observed in the model and the number of bonds (or angles) that are defined in the chemical component dictionary. The Link column lists molecule types, if any, to which the group is linked. The Z score for a bond length (or angle) is the number of standard deviations the observed value is removed from the expected value. A bond length (or angle) with  $|Z| > 2$  is considered an outlier worth inspection. RMSZ is the root-mean-square of all Z scores of the bond lengths (or angles).

Mol	Type	Chain	Res	Link	Bond lengths			Bond angles		
					Counts	RMSZ	$\# Z  > 2$	Counts	RMSZ	$\# Z  > 2$
3	GSP	A	1382	2	34,34,34	1.65	3 (8%)	51,54,54	2.87	7 (13%)
5	SO4	A	1384	-	4,4,4	0.29	0	6,6,6	0.30	0
3	GSP	B	1379	2	34,34,34	1.67	2 (5%)	51,54,54	3.14	11 (21%)
5	SO4	B	1381	-	4,4,4	0.12	0	6,6,6	0.09	0
3	GSP	C	1382	2	34,34,34	2.08	2 (5%)	51,54,54	3.15	10 (19%)
5	SO4	C	1383	-	4,4,4	0.14	0	6,6,6	0.23	0

Mol	Type	Chain	Res	Link	Bond lengths			Bond angles		
					Counts	RMSZ	# Z  > 2	Counts	RMSZ	# Z  > 2
5	SO4	C	1384	-	4,4,4	0.10	0	6,6,6	0.17	0
5	SO4	C	1385	-	4,4,4	0.15	0	6,6,6	0.45	0

In the following table, the Chirals column lists the number of chiral outliers, the number of chiral centers analysed, the number of these observed in the model and the number defined in the chemical component dictionary. Similar counts are reported in the Torsion and Rings columns. '-' means no outliers of that kind were identified.

Mol	Type	Chain	Res	Link	Chirals	Torsions	Rings
3	GSP	A	1382	2	-	0/21/38/38	0/1/3/3
5	SO4	A	1384	-	-	0/0/0/0	0/0/0/0
3	GSP	B	1379	2	-	0/21/38/38	0/1/3/3
5	SO4	B	1381	-	-	0/0/0/0	0/0/0/0
3	GSP	C	1382	2	-	0/21/38/38	0/1/3/3
5	SO4	C	1383	-	-	0/0/0/0	0/0/0/0
5	SO4	C	1384	-	-	0/0/0/0	0/0/0/0
5	SO4	C	1385	-	-	0/0/0/0	0/0/0/0

All (7) bond length outliers are listed below:

Mol	Chain	Res	Type	Atoms	Z	Observed(Å)	Ideal(Å)
3	C	1382	GSP	PG-S1G	-9.90	1.72	1.90
3	B	1379	GSP	PG-S1G	-7.59	1.76	1.90
3	A	1382	GSP	PG-S1G	-6.64	1.78	1.90
3	C	1382	GSP	C2-N3	4.72	1.39	1.33
3	A	1382	GSP	C2-N3	4.05	1.38	1.33
3	B	1379	GSP	C2-N3	3.32	1.37	1.33
3	A	1382	GSP	PB-O3B	2.46	1.64	1.59

All (28) bond angle outliers are listed below:

Mol	Chain	Res	Type	Atoms	Z	Observed(°)	Ideal(°)
3	B	1379	GSP	O3B-PG-S1G	-17.38	106.82	114.53
3	A	1382	GSP	O3B-PG-S1G	-16.33	107.28	114.53
3	C	1382	GSP	C6-C5-N7	-13.66	132.30	134.14
3	C	1382	GSP	O3B-PG-S1G	-13.21	108.67	114.53
3	B	1379	GSP	C6-C5-N7	-9.86	132.81	134.14
3	A	1382	GSP	C6-C5-N7	-7.18	133.17	134.14
3	C	1382	GSP	O3G-PG-S1G	-5.20	107.25	112.73
3	C	1382	GSP	N3-C4-N9	4.22	133.10	126.91
3	A	1382	GSP	N3-C4-N9	4.17	133.03	126.91
3	A	1382	GSP	C2-N3-C4	4.01	120.72	115.09

*Continued on next page...*

*Continued from previous page...*

Mol	Chain	Res	Type	Atoms	Z	Observed(°)	Ideal(°)
3	C	1382	GSP	C5-C4-N3	-3.94	120.23	125.94
3	C	1382	GSP	C2-N3-C4	3.91	120.58	115.09
3	A	1382	GSP	C5-C4-N3	-3.74	120.52	125.94
3	C	1382	GSP	O2G-PG-S1G	-3.74	108.79	112.73
3	B	1379	GSP	N3-C4-N9	3.24	131.66	126.91
3	B	1379	GSP	C2-N3-C4	3.20	119.58	115.09
3	A	1382	GSP	PA-O3A-PB	-3.06	122.70	131.68
3	B	1379	GSP	C8-N9-C4	2.83	109.06	106.90
3	B	1379	GSP	O4'-C1'-N9	-2.76	105.87	108.44
3	B	1379	GSP	C5-C4-N3	-2.71	122.02	125.94
3	B	1379	GSP	N7-C8-N9	-2.58	107.07	114.36
3	B	1379	GSP	PA-O3A-PB	-2.54	124.23	131.68
3	C	1382	GSP	O4'-C1'-N9	2.54	110.80	108.44
3	B	1379	GSP	N2-C2-N1	2.40	120.50	117.86
3	C	1382	GSP	N7-C8-N9	-2.29	107.88	114.36
3	A	1382	GSP	N7-C8-N9	-2.26	107.97	114.36
3	C	1382	GSP	PA-O3A-PB	-2.20	125.24	131.68
3	B	1379	GSP	O3'-C3'-C4'	-2.19	104.64	111.08

There are no chirality outliers.

There are no torsion outliers.

There are no ring outliers.

## 5.7 Other polymers ⓘ

There are no such residues in this entry.

## 5.8 Polymer linkage issues

There are no chain breaks in this entry.

## 6 Fit of model and data ⓘ

### 6.1 Protein, DNA and RNA chains ⓘ

In the following table, the column labelled ‘#RSRZ > 2’ contains the number (and percentage) of RSRZ outliers, followed by percent RSRZ outliers for the chain as percentile scores relative to all X-ray entries and entries of similar resolution. The OWAB column contains the minimum, median, 95<sup>th</sup> percentile and maximum values of the occupancy-weighted average B-factor per residue. The column labelled ‘Q < 0.9’ lists the number of (and percentage) of residues with an average occupancy less than 0.9.

Mol	Chain	Analysed	<RSRZ>	#RSRZ>2	OWAB(Å <sup>2</sup> )	Q<0.9
1	A	343/354 (96%)	0.07	7 (2%) 62 73	15, 31, 68, 86	0
1	B	291/354 (82%)	0.33	26 (8%) 10 16	18, 36, 88, 105	0
1	C	270/354 (76%)	0.65	38 (14%) 3 6	21, 51, 105, 122	0
All	All	904/1062 (85%)	0.33	71 (7%) 13 20	15, 38, 92, 122	0

All (71) RSRZ outliers are listed below:

Mol	Chain	Res	Type	RSRZ
1	C	141	THR	6.2
1	C	88	LEU	6.2
1	B	377	LEU	5.9
1	C	142	LEU	5.3
1	C	89	LEU	5.3
1	C	143	TRP	5.1
1	C	74	TYR	5.1
1	C	180	ILE	5.1
1	C	86	ILE	5.0
1	C	165	LYS	4.7
1	C	158	LEU	4.7
1	C	178	ASN	4.5
1	C	174	LEU	4.5
1	C	164	THR	4.5
1	A	114	ALA	4.4
1	B	177	ILE	4.2
1	A	112	SER	4.1
1	B	148	ILE	4.0
1	C	380	ALA	3.9
1	C	138	GLY	3.9
1	C	181	PRO	3.9
1	B	146	PRO	3.8
1	C	160	VAL	3.7

*Continued on next page...*

*Continued from previous page...*

Mol	Chain	Res	Type	RSRZ
1	B	90	HIS	3.6
1	C	179	TYR	3.5
1	C	38	ILE	3.5
1	C	84	GLN	3.5
1	B	134	ASP	3.4
1	B	135	ILE	3.4
1	C	172	LYS	3.3
1	C	63	GLN	3.2
1	A	108	LEU	3.1
1	C	137	GLU	3.1
1	C	85	THR	3.1
1	C	139	ILE	3.1
1	B	138	GLY	3.0
1	C	135	ILE	3.0
1	A	110	SER	2.9
1	B	141	THR	2.9
1	C	144	LYS	2.9
1	C	62	PHE	2.8
1	C	39	ARG	2.8
1	B	139	ILE	2.8
1	B	89	LEU	2.8
1	B	178	ASN	2.7
1	B	96	PHE	2.7
1	B	143	TRP	2.6
1	C	162	ASP	2.5
1	B	137	GLU	2.5
1	B	213	VAL	2.5
1	C	378	LEU	2.5
1	B	147	ALA	2.4
1	B	133	LYS	2.4
1	B	171	LEU	2.4
1	C	175	SER	2.4
1	A	102	ASP	2.3
1	B	180	ILE	2.3
1	B	179	TYR	2.3
1	B	149	GLN	2.3
1	C	177	ILE	2.2
1	C	78	ILE	2.2
1	B	150	GLU	2.2
1	B	82	VAL	2.2
1	A	123	GLY	2.2
1	C	140	GLU	2.2

*Continued on next page...*

*Continued from previous page...*

Mol	Chain	Res	Type	RSRZ
1	A	111	GLU	2.1
1	C	159	GLN	2.1
1	B	376	ASN	2.1
1	B	142	LEU	2.0
1	C	87	LYS	2.0
1	C	199	ILE	2.0

## 6.2 Non-standard residues in protein, DNA, RNA chains

In the following table, the Atoms column lists the number of modelled atoms in the group and the number defined in the chemical component dictionary. LLDF column lists the quality of electron density of the group with respect to its neighbouring residues in protein, DNA or RNA chains. The B-factors column lists the minimum, median, 95<sup>th</sup> percentile and maximum values of B factors of atoms in the group. The column labelled 'Q< 0.9' lists the number of atoms with occupancy less than 0.9.

Mol	Type	Chain	Res	Atoms	RSR	LLDF	B-factors(Å <sup>2</sup> )	Q<0.9
1	CSS	A	152	7/8	0.10	-0.87	42,43,46,48	0
1	CSS	A	163	7/8	0.09	-0.98	34,35,36,37	0
1	CSS	C	163	7/8	0.13	-0.99	82,84,87,87	0
1	CSS	B	163	7/8	0.10	-1.95	59,61,63,63	0

## 6.3 Carbohydrates

There are no carbohydrates in this entry.

## 6.4 Ligands

In the following table, the Atoms column lists the number of modelled atoms in the group and the number defined in the chemical component dictionary. LLDF column lists the quality of electron density of the group with respect to its neighbouring residues in protein, DNA or RNA chains. The B-factors column lists the minimum, median, 95<sup>th</sup> percentile and maximum values of B factors of atoms in the group. The column labelled 'Q< 0.9' lists the number of atoms with occupancy less than 0.9.

Mol	Type	Chain	Res	Atoms	RSR	LLDF	B-factors(Å <sup>2</sup> )	Q<0.9
4	CL	A	1383	1/1	0.18	1.33	49,49,49,49	0
3	GSP	A	1382	32/32	0.14	0.86	20,26,35,38	0
2	MG	A	1381	1/1	0.13	0.16	18,18,18,18	0
5	SO4	C	1385	5/5	0.18	-0.03	71,72,72,72	0
2	MG	B	1378	1/1	0.12	-0.44	25,25,25,25	0

*Continued on next page...*

*Continued from previous page...*

Mol	Type	Chain	Res	Atoms	RSR	LLDF	B-factors( $\text{\AA}^2$ )	Q<0.9
3	GSP	B	1379	32/32	0.12	-0.52	20,23,31,34	0
3	GSP	C	1382	32/32	0.10	-0.71	34,38,44,48	0
5	SO4	B	1381	5/5	0.14	-1.09	79,79,79,80	0
4	CL	C	1386	1/1	0.12	-1.36	85,85,85,85	0
2	MG	C	1381	1/1	0.08	-1.38	44,44,44,44	0
4	CL	B	1382	1/1	0.09	-2.25	68,68,68,68	0
5	SO4	A	1384	5/5	0.09	-2.33	45,45,46,46	0
4	CL	B	1380	1/1	0.08	-2.51	76,76,76,76	0
5	SO4	C	1383	5/5	0.08	-2.61	81,82,82,83	0
5	SO4	C	1384	5/5	0.13	-3.41	65,66,67,67	0

## 6.5 Other polymers ⓘ

There are no such residues in this entry.