



Full wwPDB X-ray Structure Validation Report ⓘ

Feb 27, 2014 – 08:03 AM GMT

PDB ID : 2Y1X
Title : CRYSTAL STRUCTURE OF COACTIVATOR ASSOCIATED ARGININE METHYLTRANSFERASE 1 (CARM1) IN COMPLEX WITH SINEFUNGIN AND INDOLE INHIBITOR
Authors : Sack, J.S.; Thieffine, S.; Bandiera, T.; Fasolini, M.; Duke, G.J.; Jayaraman, L.; Kish, K.F.; Klei, H.E.; Purandare, A.V.; Rosettani, P.; Troiani, S.; Xie, D.; Bertrand, J.A.
Deposited on : 2010-12-10
Resolution : 2.40 Å(reported)

This is a full wwPDB validation report for a publicly released PDB entry.
We welcome your comments at validation@mail.wwpdb.org
A user guide is available at <http://wwpdb.org/ValidationPDFNotes.html>

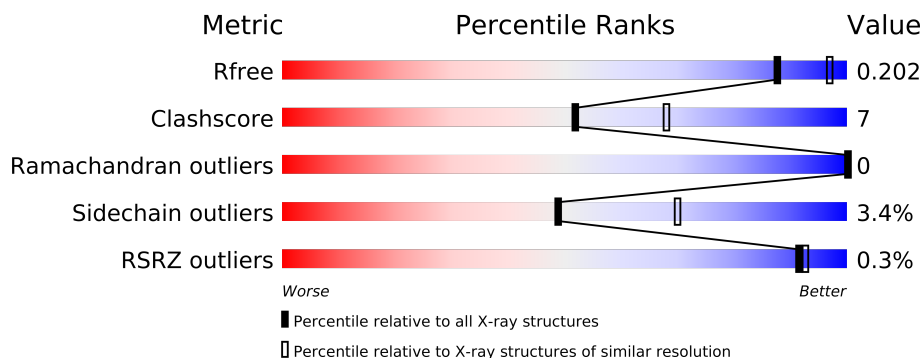
The following versions of software and data (see [references](#)) were used in the production of this report:

MolProbity : 4.02b-467
Mogul : 1.15 2013
Xtriage (Phenix) : dev-1323
EDS : stable22639
Percentile statistics : 21963
Refmac : 5.8.0049
CCP4 : 6.3.0 (Settle)
Ideal geometry (proteins) : Engh & Huber (2001)
Ideal geometry (DNA, RNA) : Parkinson et. al. (1996)
Validation Pipeline (wwPDB-VP) : stable22683

1 Overall quality at a glance

The reported resolution of this entry is 2.40 Å.

Percentile scores (ranging between 0-100) for global validation metrics of the entry are shown in the following graphic. The table shows the number of entries on which the scores are based.



Metric	Whole archive (#Entries)	Similar resolution (#Entries, resolution range(Å))
R_{free}	66092	2207 (2.40-2.40)
Clashscore	79885	2789 (2.40-2.40)
Ramachandran outliers	78287	2736 (2.40-2.40)
Sidechain outliers	78261	2737 (2.40-2.40)
RSRZ outliers	66119	2210 (2.40-2.40)

The table below summarises the geometric issues observed across the polymeric chains and their fit to the electron density. The red, orange, yellow and green segments on the lower bar indicate the fraction of residues that contain outliers for ≥ 3 , 2, 1 and 0 types of geometric quality criteria. The upper red bar (where present) indicates the fraction of residues that have poor fit to the electron density.

Mol	Chain	Length	Quality of chain
1	A	348	
1	B	348	
1	C	348	
1	D	348	

2 Entry composition i

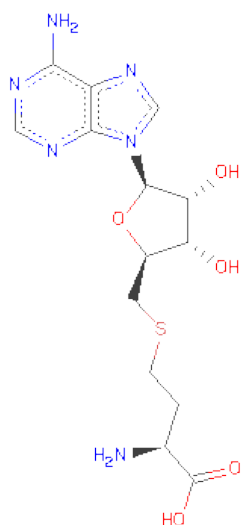
There are 5 unique types of molecules in this entry. The entry contains 11692 atoms, of which 0 are hydrogen and 0 are deuterium.

In the tables below, the ZeroOcc column contains the number of atoms modelled with zero occupancy, the AltConf column contains the number of residues with at least one atom in alternate conformation and the Trace column contains the number of residues modelled with at most 2 atoms.

- Molecule 1 is a protein called HISTONE-ARGININE METHYLTRANSFERASE CARM1.

Mol	Chain	Residues	Atoms					ZeroOcc	AltConf	Trace
1	A	343	Total	C	N	O	S	0	0	1
			2745	1772	454	505	14			
1	B	343	Total	C	N	O	S	0	0	1
			2745	1772	454	505	14			
1	C	343	Total	C	N	O	S	0	0	1
			2745	1772	454	505	14			
1	D	343	Total	C	N	O	S	0	0	1
			2745	1772	454	505	14			

- Molecule 2 is S-ADENOSYL-L-HOMOCYSTEINE (three-letter code: SAH) (formula: $C_{14}H_{20}N_6O_5S$).



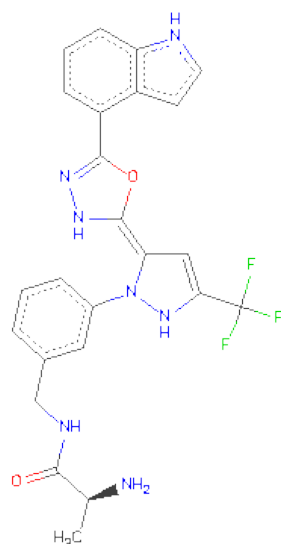
Mol	Chain	Residues	Atoms					ZeroOcc	AltConf
2	A	1	Total	C	N	O	S	0	0
			26	14	6	5	1		
2	B	1	Total	C	N	O	S	0	0
			26	14	6	5	1		

Continued on next page...

Continued from previous page...

Mol	Chain	Residues	Atoms					ZeroOcc	AltConf
2	C	1	Total	C	N	O	S	0	0
			26	14	6	5	1		
2	D	1	Total	C	N	O	S	0	0
			26	14	6	5	1		

- Molecule 3 is N-(3-{5-[5-(1H-INDOL-4-YL)-1,3,4-OXADIAZOL-2-YL]-3-(TRIFLUOROMETHYL)-1H-PYRAZOL-1-YL}BENZYL)-L-ALANINAMIDE (three-letter code: 845) (formula: C₂₄H₂₂F₃N₇O₂).



Mol	Chain	Residues	Atoms					ZeroOcc	AltConf
3	A	1	Total	C	F	N	O	0	0
			36	24	3	7	2		
3	B	1	Total	C	F	N	O	0	0
			36	24	3	7	2		
3	C	1	Total	C	F	N	O	0	0
			36	24	3	7	2		
3	D	1	Total	C	F	N	O	0	0
			36	24	3	7	2		

- Molecule 4 is CHLORIDE ION (three-letter code: CL) (formula: Cl).

Mol	Chain	Residues	Atoms	ZeroOcc	AltConf
4	B	1	Total	0	0
			1 Cl		
4	A	1	Total	0	0
			1 Cl		

Continued on next page...

Continued from previous page...

Mol	Chain	Residues	Atoms		ZeroOcc	AltConf
4	D	1	Total 1	Cl 1	0	0
4	C	1	Total 1	Cl 1	0	0

- Molecule 5 is water.

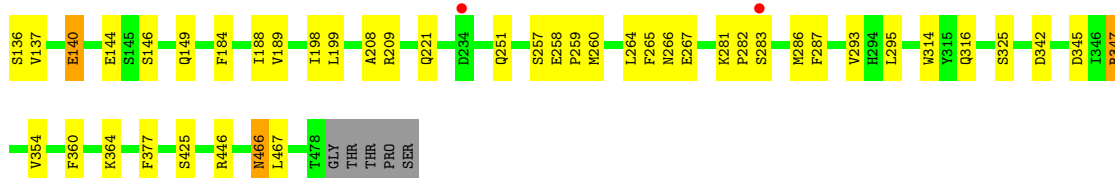
Mol	Chain	Residues	Atoms		ZeroOcc	AltConf
5	A	124	Total 124	O 124	0	0
5	B	86	Total 86	O 86	0	0
5	C	137	Total 137	O 137	0	0
5	D	113	Total 113	O 113	0	0

3 Residue-property plots

These plots are drawn for all protein, RNA and DNA chains in the entry. The first graphic for a chain summarises the proportions of errors displayed in the second graphic. The second graphic shows the sequence view annotated by issues in geometry and electron density. Residues are color-coded according to the number of geometric quality criteria for which they contain at least one outlier: green = 0, yellow = 1, orange = 2 and red = 3 or more. A red dot above a residue indicates a poor fit to the electron density ($RSRZ > 2$). Stretches of 2 or more consecutive residues without any outlier are shown as a green connector. Residues present in the sample, but not in the model, are shown in grey.

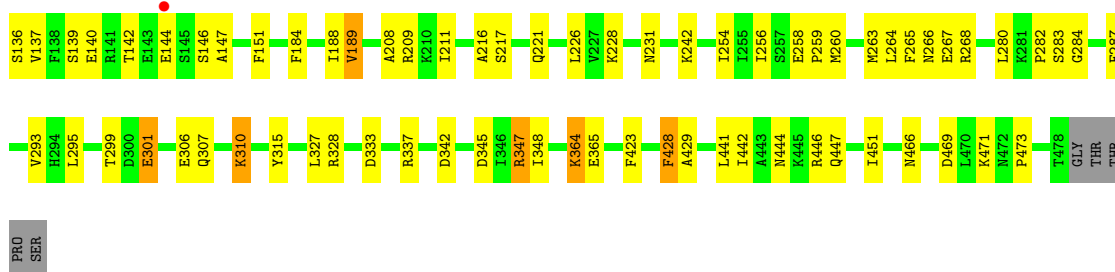
• Molecule 1: HISTONE-ARGININE METHYLTRANSFERASE CARM1

Chain A: 



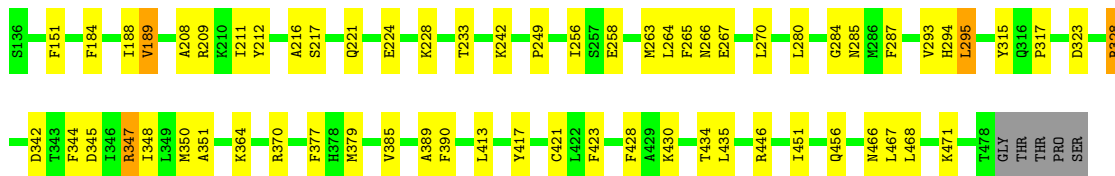
• Molecule 1: HISTONE-ARGININE METHYLTRANSFERASE CARM1

Chain B: 



• Molecule 1: HISTONE-ARGININE METHYLTRANSFERASE CARM1

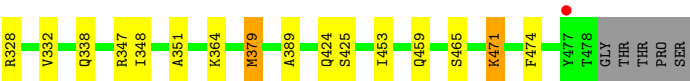
Chain C: 



• Molecule 1: HISTONE-ARGININE METHYLTRANSFERASE CARM1

Chain D: 





4 Data and refinement statistics

Property	Value	Source
Space group	P 21 21 2	Depositor
Cell constants a, b, c, α , β , γ	75.56Å 98.76Å 207.46Å 90.00° 90.00° 90.00°	Depositor
Resolution (Å)	29.96 – 2.40 29.96 – 2.40	Depositor EDS
% Data completeness (in resolution range)	99.3 (29.96-2.40) 99.4 (29.96-2.40)	Depositor EDS
R_{merge}	0.12	Depositor
R_{sym}	(Not available)	Depositor
$\langle I/\sigma(I) \rangle$ ¹	2.01 (at 2.39Å)	Xtriage
Refinement program	CNX 2005	Depositor
R, R_{free}	0.207 , 0.264 0.207 , 0.202	Depositor DCC
R_{free} test set	3108 reflections (5.35%)	DCC
Wilson B-factor (Å ²)	27.3	Xtriage
Anisotropy	0.607	Xtriage
Bulk solvent k_{sol} (e/Å ³), B_{sol} (Å ²)	0.34 , 18.7	EDS
Estimated twinning fraction	No twinning to report.	Xtriage
L-test for twinning	$\langle L \rangle = 0.50$, $\langle L^2 \rangle = 0.33$	Xtriage
Outliers	1 of 61211 reflections (0.002%)	Xtriage
F_o, F_c correlation	0.94	EDS
Total number of atoms	11692	wwPDB-VP
Average B, all atoms (Å ²)	27.0	wwPDB-VP

Xtriage's analysis on translational NCS is as follows: *The analyses of the Patterson function reveals a significant off-origin peak that is 56.90 % of the origin peak, indicating pseudo translational symmetry. The chance of finding a peak of this or larger height randomly in a structure without pseudo translational symmetry is equal to 2.5598e-05. The detected translational NCS is most likely also responsible for the elevated intensity ratio.*

¹Intensities estimated from amplitudes.

5 Model quality

5.1 Standard geometry

Bond lengths and bond angles in the following residue types are not validated in this section: 845, SAH, CL

The Z score for a bond length (or angle) is the number of standard deviations the observed value is removed from the expected value. A bond length (or angle) with $|Z| > 5$ is considered an outlier worth inspection. RMSZ is the root-mean-square of all Z scores of the bond lengths (or angles).

Mol	Chain	Bond lengths		Bond angles	
		RMSZ	$\# Z > 5$	RMSZ	$\# Z > 5$
1	A	0.52	0/2815	0.60	0/3815
1	B	0.50	0/2815	0.59	0/3815
1	C	0.51	0/2815	0.60	0/3815
1	D	0.50	0/2815	0.58	0/3815
All	All	0.51	0/11260	0.59	0/15260

There are no bond length outliers.

There are no bond angle outliers.

There are no chirality outliers.

There are no planarity outliers.

5.2 Close contacts

In the following table, the Non-H and H(model) columns list the number of non-hydrogen atoms and hydrogen atoms in the chain respectively. The H(added) column lists the number of hydrogens added by MolProbity. The Clashes column lists the number of clashes within the asymmetric unit, and the number in parentheses is this value normalized per 1000 atoms of the molecule in the chain. The Symm-Clashes column gives symmetry related clashes, in the same way as for the Clashes column.

Mol	Chain	Non-H	H(model)	H(added)	Clashes	Symm-Clashes
1	A	2745	0	2692	25	0
1	B	2745	0	2692	53	0
1	C	2745	0	2692	44	0
1	D	2745	0	2692	38	0
2	A	26	0	19	0	0
2	B	26	0	19	1	0
2	C	26	0	19	1	0
2	D	26	0	19	0	0

Continued on next page...

Continued from previous page...

Mol	Chain	Non-H	H(model)	H(added)	Clashes	Symm-Clashes
3	A	36	0	22	1	0
3	B	36	0	22	2	0
3	C	36	0	22	0	0
3	D	36	0	22	1	0
4	A	1	0	0	0	0
4	B	1	0	0	0	0
4	C	1	0	0	0	0
4	D	1	0	0	0	0
5	A	124	0	0	2	0
5	B	86	0	0	6	0
5	C	137	0	0	5	0
5	D	113	0	0	4	0
All	All	11692	0	10932	159	0

Clashscore is defined as the number of clashes calculated for the entry per 1000 atoms (including hydrogens) of the entry. The overall clashscore for this entry is 7.

All (159) close contacts within the same asymmetric unit are listed below.

Atom-1	Atom-2	Distance(Å)	Clash(Å)
1:D:338:GLN:HE21	1:D:474:PHE:HB2	1.30	0.95
1:C:315:TYR:HB2	1:C:328:ARG:HD3	1.55	0.88
1:B:345:ASP:OD2	1:B:347:ARG:HB2	1.82	0.80
1:D:338:GLN:NE2	1:D:474:PHE:HB2	1.96	0.79
1:C:328:ARG:HH11	1:C:328:ARG:HG2	1.47	0.77
1:B:333:ASP:O	1:B:337:ARG:HG3	1.85	0.76
1:C:285:ASN:HB2	5:C:2073:HOH:O	1.86	0.76
1:B:140:GLU:OE1	1:B:140:GLU:HA	1.92	0.70
1:A:342:ASP:HB2	5:A:2071:HOH:O	1.91	0.69
1:C:342:ASP:HB2	5:C:2088:HOH:O	1.94	0.68
1:D:144:GLU:HA	1:D:144:GLU:OE1	1.93	0.68
1:D:312:ASN:HD21	1:D:328:ARG:HH21	1.41	0.67
1:B:342:ASP:HB2	5:B:2054:HOH:O	1.96	0.65
1:D:379:MET:CE	1:D:379:MET:HA	2.27	0.65
1:C:421:CYS:SG	1:C:468:LEU:HD22	2.37	0.65
1:D:379:MET:HE3	1:D:379:MET:HA	1.79	0.63
1:D:189:VAL:HG22	1:D:211:ILE:HG23	1.82	0.62
1:D:266:ASN:O	1:D:267:GLU:HB2	1.99	0.62
1:C:270:LEU:HB2	5:C:2066:HOH:O	1.99	0.62
1:B:315:TYR:HB2	1:B:328:ARG:HG3	1.82	0.61
1:C:351:ALA:HB2	1:C:379:MET:HE1	1.83	0.61
1:B:442:ILE:HD12	5:B:2080:HOH:O	2.00	0.60
1:D:351:ALA:HB2	1:D:379:MET:HE3	1.82	0.60

Continued on next page...

Continued from previous page...

Atom-1	Atom-2	Distance(Å)	Clash(Å)
1:C:328:ARG:HG2	1:C:328:ARG:NH1	2.17	0.59
1:B:280:LEU:HD11	1:B:284:GLY:HA3	1.85	0.59
1:D:312:ASN:ND2	1:D:328:ARG:HE	2.01	0.59
1:D:265:PHE:CE2	1:D:293:VAL:HG21	2.40	0.57
1:B:228:LYS:HE3	5:B:2022:HOH:O	2.05	0.56
1:A:265:PHE:CE2	1:A:293:VAL:HG21	2.40	0.56
1:C:189:VAL:HG22	1:C:211:ILE:HG23	1.87	0.56
1:C:428:PHE:CE1	1:C:430:LYS:HE2	2.41	0.56
1:A:266:ASN:O	1:A:267:GLU:HB2	2.06	0.55
1:A:466:ASN:ND2	1:A:467:LEU:H	2.05	0.55
1:A:354:VAL:HG23	1:A:377:PHE:CE1	2.42	0.54
1:C:435:LEU:HD12	1:C:456:GLN:O	2.06	0.54
1:B:268:ARG:NH1	1:B:444:ASN:O	2.37	0.54
1:C:265:PHE:CE2	1:C:293:VAL:HG21	2.42	0.54
1:C:317:PRO:O	1:C:323:ASP:HA	2.09	0.53
1:B:184:PHE:O	1:B:208:ALA:HA	2.08	0.53
1:C:377:PHE:O	1:C:434:THR:HA	2.09	0.53
1:C:224:GLU:OE2	1:C:228:LYS:HE2	2.09	0.53
1:C:233:THR:HG22	5:C:2040:HOH:O	2.09	0.53
1:B:136:SER:OG	1:B:137:VAL:N	2.41	0.52
1:D:317:PRO:HD2	5:D:2061:HOH:O	2.08	0.52
1:A:184:PHE:O	1:A:208:ALA:HA	2.09	0.52
1:C:451:ILE:HB	1:C:468:LEU:HB2	1.91	0.52
1:B:146:SER:HB2	1:B:446:ARG:NH1	2.25	0.52
1:D:136:SER:O	1:D:140:GLU:HG2	2.10	0.52
1:C:266:ASN:O	1:C:267:GLU:HB2	2.09	0.52
1:C:151:PHE:CE1	1:C:216:ALA:HB3	2.45	0.51
1:D:459:GLN:N	1:D:459:GLN:OE1	2.42	0.51
1:A:188:ILE:HD11	1:A:209:ARG:HH21	1.76	0.51
1:D:295:LEU:HA	1:D:389:ALA:O	2.11	0.50
1:A:314:TRP:O	1:A:325:SER:HA	2.12	0.50
1:D:184:PHE:O	1:D:208:ALA:HA	2.11	0.50
1:B:428:PHE:HD1	1:B:429:ALA:N	2.10	0.50
1:C:265:PHE:HE2	1:C:293:VAL:HG21	1.77	0.50
1:B:469:ASP:OD2	1:B:471:LYS:HG2	2.11	0.50
1:A:144:GLU:HA	1:A:144:GLU:OE1	2.12	0.50
1:B:189:VAL:HG22	1:B:211:ILE:HG23	1.95	0.49
1:C:295:LEU:N	1:C:295:LEU:HD23	2.28	0.49
1:B:282:PRO:O	1:B:283:SER:HB2	2.12	0.49
1:C:423:PHE:CD1	1:C:466:ASN:ND2	2.82	0.48
1:A:267:GLU:OE2	3:A:1002:845:H35	2.14	0.48
1:A:466:ASN:HD22	1:A:467:LEU:H	1.61	0.48

Continued on next page...

Continued from previous page...

Atom-1	Atom-2	Distance(Å)	Clash(Å)
1:D:265:PHE:HE2	1:D:293:VAL:HG21	1.75	0.47
1:B:301:GLU:HG2	1:B:301:GLU:O	2.14	0.47
1:B:142:THR:HG21	1:B:147:ALA:HB2	1.95	0.47
1:D:299:THR:O	1:D:299:THR:HG23	2.14	0.47
1:A:264:LEU:HD23	1:A:293:VAL:CG2	2.45	0.47
1:B:267:GLU:OE2	3:B:1002:845:H35	2.15	0.47
1:A:345:ASP:OD1	1:A:347:ARG:HG2	2.14	0.47
1:D:190:LEU:HD13	1:D:248:LEU:HD11	1.97	0.47
1:B:266:ASN:O	1:B:267:GLU:HB2	2.15	0.47
1:C:344:PHE:CD1	1:C:348:ILE:HD11	2.49	0.47
1:D:453:ILE:O	1:D:465:SER:HA	2.15	0.47
1:A:264:LEU:HD23	1:A:293:VAL:HG22	1.95	0.46
1:B:231:ASN:HA	5:B:2023:HOH:O	2.16	0.46
1:C:428:PHE:HE1	1:C:430:LYS:CE	2.29	0.46
1:A:282:PRO:O	1:A:283:SER:HB2	2.15	0.46
1:C:413:LEU:HD11	1:C:417:TYR:CD2	2.49	0.46
1:D:328:ARG:O	1:D:332:VAL:HG23	2.16	0.46
1:B:268:ARG:HD3	1:B:447:GLN:HA	1.98	0.46
1:B:471:LYS:C	1:B:473:PRO:HD3	2.36	0.46
1:B:263:MET:O	1:B:264:LEU:HB3	2.14	0.46
1:B:188:ILE:HD11	1:B:209:ARG:HH21	1.79	0.46
1:B:265:PHE:CE2	1:B:293:VAL:HG21	2.51	0.46
1:C:264:LEU:HD23	1:C:293:VAL:CG2	2.45	0.46
1:A:136:SER:O	1:A:140:GLU:HB2	2.16	0.46
1:B:147:ALA:O	1:B:151:PHE:HD2	2.00	0.45
1:C:295:LEU:HA	1:C:389:ALA:O	2.16	0.45
1:C:347:ARG:HE	1:C:347:ARG:HB3	1.33	0.45
1:D:266:ASN:O	1:D:267:GLU:CB	2.63	0.45
1:B:264:LEU:HD23	1:B:293:VAL:CG2	2.46	0.45
1:C:263:MET:O	1:C:264:LEU:HB3	2.17	0.45
1:B:469:ASP:OD1	1:B:471:LYS:HE2	2.16	0.45
1:A:137:VAL:HG23	5:A:2001:HOH:O	2.16	0.45
1:D:316:GLN:HB2	5:D:2061:HOH:O	2.17	0.45
1:D:138:PHE:C	1:D:138:PHE:CD1	2.90	0.45
1:C:184:PHE:O	1:C:208:ALA:HA	2.17	0.44
1:B:267:GLU:CD	3:B:1002:845:H35	2.37	0.44
1:B:307:GLN:OE1	1:B:310:LYS:HE2	2.17	0.44
1:D:201:PHE:O	1:D:205:GLN:HG3	2.18	0.44
1:B:256:ILE:HA	1:B:287:PHE:O	2.17	0.44
1:C:379:MET:CE	1:C:379:MET:HA	2.48	0.44
1:C:151:PHE:O	1:C:217:SER:HB2	2.18	0.44
1:B:327:LEU:HD11	1:D:226:LEU:HG	2.00	0.44

Continued on next page...

Continued from previous page...

Atom-1	Atom-2	Distance(Å)	Clash(Å)
1:B:299:THR:O	1:B:348:ILE:HB	2.18	0.43
1:D:270:LEU:HB2	5:D:2043:HOH:O	2.19	0.43
1:D:256:ILE:HA	1:D:287:PHE:O	2.18	0.43
1:B:428:PHE:CD1	1:B:429:ALA:N	2.87	0.43
1:C:350:MET:SD	1:C:385:VAL:HG22	2.59	0.43
1:A:286:MET:HE3	1:A:360:PHE:HB3	2.00	0.43
1:C:294:HIS:O	1:C:390:PHE:HA	2.18	0.43
1:A:259:PRO:HD2	1:A:260:MET:SD	2.59	0.43
1:C:256:ILE:HA	1:C:287:PHE:O	2.19	0.43
1:B:242:LYS:HA	2:B:1001:SAH:N1	2.34	0.43
1:B:364:LYS:O	1:B:365:GLU:C	2.58	0.43
1:C:328:ARG:NH1	1:C:328:ARG:CG	2.82	0.42
1:B:423:PHE:HA	1:B:466:ASN:OD1	2.19	0.42
1:D:312:ASN:HD21	1:D:328:ARG:NH2	2.10	0.42
1:B:144:GLU:C	1:B:146:SER:N	2.73	0.42
1:D:471:LYS:HE2	5:D:2108:HOH:O	2.19	0.42
1:B:144:GLU:O	1:B:146:SER:N	2.53	0.42
1:A:345:ASP:OD1	1:A:347:ARG:CG	2.68	0.42
1:B:259:PRO:HD2	1:B:260:MET:SD	2.60	0.42
1:C:242:LYS:HA	2:C:1001:SAH:N1	2.35	0.42
1:B:142:THR:CG2	1:B:147:ALA:HB2	2.50	0.42
1:D:263:MET:O	1:D:264:LEU:HB3	2.20	0.42
1:C:446:ARG:HB3	1:C:471:LYS:HE2	2.02	0.42
1:C:370:ARG:NE	5:C:2100:HOH:O	2.45	0.42
1:B:189:VAL:HB	1:B:254:ILE:HG23	2.02	0.42
1:D:262:TYR:O	1:D:263:MET:HB2	2.20	0.42
1:C:212:TYR:OH	1:C:249:PRO:HG2	2.20	0.42
1:B:471:LYS:O	1:B:473:PRO:HD3	2.20	0.41
1:A:251:GLN:HB3	1:A:281:LYS:HG3	2.03	0.41
1:A:198:ILE:HG23	1:A:199:LEU:N	2.35	0.41
1:C:345:ASP:O	1:C:348:ILE:HG12	2.21	0.41
1:B:226:LEU:HA	1:B:226:LEU:HD23	1.80	0.41
1:D:298:PHE:HA	1:D:348:ILE:O	2.20	0.41
1:C:188:ILE:HD11	1:C:209:ARG:HH21	1.86	0.41
1:B:217:SER:HB2	5:B:2002:HOH:O	2.19	0.41
1:B:441:LEU:CD2	1:B:451:ILE:HG12	2.51	0.41
1:D:154:TYR:OH	3:D:1002:845:H232	2.21	0.41
1:A:265:PHE:HE2	1:A:293:VAL:HG21	1.81	0.41
1:B:306:GLU:HB2	5:B:2039:HOH:O	2.20	0.41
1:D:295:LEU:N	1:D:295:LEU:HD23	2.36	0.41
1:B:147:ALA:O	1:B:151:PHE:CD2	2.74	0.41
1:B:151:PHE:CE1	1:B:216:ALA:HB3	2.56	0.41

Continued on next page...

Continued from previous page...

Atom-1	Atom-2	Distance(Å)	Clash(Å)
1:D:280:LEU:HD11	1:D:284:GLY:HA3	2.03	0.41
1:D:264:LEU:HD23	1:D:293:VAL:CG2	2.50	0.40
1:D:347:ARG:HE	1:D:347:ARG:HB2	1.67	0.40
1:A:257:SER:C	1:A:259:PRO:HD3	2.41	0.40
1:C:212:TYR:CZ	1:C:249:PRO:HG2	2.56	0.40
1:A:146:SER:HB2	1:A:446:ARG:NH1	2.36	0.40
1:C:280:LEU:HD11	1:C:284:GLY:HA3	2.04	0.40
1:B:151:PHE:CE2	1:B:242:LYS:HE3	2.57	0.40
1:B:469:ASP:CG	1:B:471:LYS:HG2	2.42	0.40
1:B:151:PHE:O	1:B:217:SER:HB2	2.22	0.40

There are no symmetry-related clashes.

5.3 Torsion angles

5.3.1 Protein backbone ⓘ

In the following table, the Percentiles column shows the percent Ramachandran outliers of the chain as a percentile score with respect to all X-ray entries followed by that with respect to entries of similar resolution. The Analysed column shows the number of residues for which the backbone conformation was analysed, and the total number of residues.

Mol	Chain	Analysed	Favoured	Allowed	Outliers	Percentiles	
1	A	341/348 (98%)	327 (96%)	14 (4%)	0	100	100
1	B	341/348 (98%)	324 (95%)	17 (5%)	0	100	100
1	C	341/348 (98%)	327 (96%)	14 (4%)	0	100	100
1	D	341/348 (98%)	327 (96%)	14 (4%)	0	100	100
All	All	1364/1392 (98%)	1305 (96%)	59 (4%)	0	100	100

There are no Ramachandran outliers to report.

5.3.2 Protein sidechains ⓘ

In the following table, the Percentiles column shows the percent sidechain outliers of the chain as a percentile score with respect to all X-ray entries followed by that with respect to entries of similar resolution. The Analysed column shows the number of residues for which the sidechain conformation was analysed, and the total number of residues.

Mol	Chain	Analysed	Rotameric	Outliers	Percentiles	
1	A	298/303 (98%)	286 (96%)	12 (4%)	42	63
1	B	298/303 (98%)	288 (97%)	10 (3%)	49	70
1	C	298/303 (98%)	290 (97%)	8 (3%)	57	78
1	D	298/303 (98%)	288 (97%)	10 (3%)	49	70
All	All	1192/1212 (98%)	1152 (97%)	40 (3%)	49	70

All (40) residues with a non-rotameric sidechain are listed below:

Mol	Chain	Res	Type
1	A	140	GLU
1	A	149	GLN
1	A	189	VAL
1	A	221	GLN
1	A	258	GLU
1	A	287	PHE
1	A	295	LEU
1	A	316	GLN
1	A	347	ARG
1	A	364	LYS
1	A	425	SER
1	A	466	ASN
1	B	139	SER
1	B	189	VAL
1	B	221	GLN
1	B	258	GLU
1	B	295	LEU
1	B	301	GLU
1	B	310	LYS
1	B	347	ARG
1	B	364	LYS
1	B	428	PHE
1	C	189	VAL
1	C	221	GLN
1	C	258	GLU
1	C	295	LEU
1	C	328	ARG
1	C	347	ARG
1	C	364	LYS
1	C	467	LEU
1	D	189	VAL
1	D	221	GLN
1	D	258	GLU

Continued on next page...

Continued from previous page...

Mol	Chain	Res	Type
1	D	287	PHE
1	D	295	LEU
1	D	364	LYS
1	D	379	MET
1	D	424	GLN
1	D	425	SER
1	D	471	LYS

Some sidechains can be flipped to improve hydrogen bonding and reduce clashes. All (14) such sidechains are listed below:

Mol	Chain	Res	Type
1	A	161	GLN
1	A	174	GLN
1	A	466	ASN
1	A	472	ASN
1	B	161	GLN
1	B	174	GLN
1	C	149	GLN
1	C	161	GLN
1	C	174	GLN
1	C	302	GLN
1	D	161	GLN
1	D	174	GLN
1	D	312	ASN
1	D	338	GLN

5.3.3 RNA ⓘ

There are no RNA chains in this entry.

5.4 Non-standard residues in protein, DNA, RNA chains ⓘ

There are no non-standard protein/DNA/RNA residues in this entry.

5.5 Carbohydrates ⓘ

There are no carbohydrates in this entry.

5.6 Ligand geometry

Of 12 ligands modelled in this entry, 4 are monoatomic - leaving 8 for Mogul analysis.

In the following table, the Counts columns list the number of bonds (or angles) for which Mogul statistics could be retrieved, the number of bonds (or angles) that are observed in the model and the number of bonds (or angles) that are defined in the chemical component dictionary. The Link column lists molecule types, if any, to which the group is linked. The Z score for a bond length (or angle) is the number of standard deviations the observed value is removed from the expected value. A bond length (or angle) with $|Z| > 2$ is considered an outlier worth inspection. RMSZ is the root-mean-square of all Z scores of the bond lengths (or angles).

Mol	Type	Chain	Res	Link	Bond lengths			Bond angles		
					Counts	RMSZ	# $ Z > 2$	Counts	RMSZ	# $ Z > 2$
2	SAH	A	1001	-	28,28,28	1.16	1 (3%)	40,40,40	2.22	9 (22%)
3	845	A	1002	-	40,40,40	2.65	13 (32%)	50,59,59	1.59	8 (16%)
2	SAH	B	1001	-	28,28,28	1.31	2 (7%)	40,40,40	2.19	9 (22%)
3	845	B	1002	-	40,40,40	2.74	15 (37%)	50,59,59	1.65	11 (22%)
2	SAH	C	1001	-	28,28,28	1.31	2 (7%)	40,40,40	2.16	8 (20%)
3	845	C	1002	-	40,40,40	2.53	15 (37%)	50,59,59	1.79	14 (28%)
2	SAH	D	1001	-	28,28,28	1.29	3 (10%)	40,40,40	2.17	9 (22%)
3	845	D	1002	-	40,40,40	2.85	11 (27%)	50,59,59	1.64	7 (14%)

In the following table, the Chirals column lists the number of chiral outliers, the number of chiral centers analysed, the number of these observed in the model and the number defined in the chemical component dictionary. Similar counts are reported in the Torsion and Rings columns. '-' means no outliers of that kind were identified.

Mol	Type	Chain	Res	Link	Chirals	Torsions	Rings
2	SAH	A	1001	-	-	0/15/31/31	0/1/3/3
3	845	A	1002	-	-	0/22/27/27	0/2/5/5
2	SAH	B	1001	-	-	0/15/31/31	0/1/3/3
3	845	B	1002	-	-	0/22/27/27	0/2/5/5
2	SAH	C	1001	-	-	0/15/31/31	0/1/3/3
3	845	C	1002	-	-	0/22/27/27	0/2/5/5
2	SAH	D	1001	-	-	0/15/31/31	0/1/3/3
3	845	D	1002	-	-	0/22/27/27	0/2/5/5

All (62) bond length outliers are listed below:

Mol	Chain	Res	Type	Atoms	Z	Observed(Å)	Ideal(Å)
3	D	1002	845	C6-N1	-10.73	1.27	1.43
3	A	1002	845	C6-N1	-9.78	1.28	1.43

Continued on next page...

Continued from previous page...

Mol	Chain	Res	Type	Atoms	Z	Observed(Å)	Ideal(Å)
3	C	1002	845	C6-N1	-9.09	1.29	1.43
3	B	1002	845	C6-N1	-8.98	1.29	1.43
3	D	1002	845	C28-C26	-7.59	1.40	1.47
3	B	1002	845	C15-C4	7.24	1.54	1.48
3	B	1002	845	C28-C26	-6.52	1.41	1.47
3	A	1002	845	C28-C26	-6.41	1.41	1.47
3	D	1002	845	C15-C4	6.32	1.53	1.48
3	A	1002	845	C15-C4	5.27	1.53	1.48
3	B	1002	845	C4-N5	4.96	1.39	1.34
3	C	1002	845	C28-C26	-4.95	1.42	1.47
3	A	1002	845	C11-C6	4.56	1.45	1.38
2	C	1001	SAH	C2-N3	4.35	1.40	1.32
3	C	1002	845	C15-C4	4.30	1.52	1.48
3	D	1002	845	C4-N5	4.14	1.38	1.34
3	C	1002	845	C2-N1	4.12	1.43	1.36
3	A	1002	845	C29-C28	4.00	1.45	1.38
2	D	1001	SAH	C2-N3	3.90	1.39	1.32
2	B	1001	SAH	C2-N3	3.82	1.39	1.32
3	C	1002	845	C11-C6	3.70	1.43	1.38
3	D	1002	845	C2-N1	3.70	1.42	1.36
3	C	1002	845	C29-C28	3.68	1.45	1.38
3	B	1002	845	C2-N1	3.62	1.42	1.36
3	D	1002	845	C29-C28	3.51	1.44	1.38
3	C	1002	845	C7-C6	3.45	1.44	1.38
2	A	1001	SAH	C2-N3	3.32	1.38	1.32
3	B	1002	845	C11-C6	3.24	1.43	1.38
3	A	1002	845	C7-C6	3.23	1.43	1.38
3	D	1002	845	C7-C6	3.21	1.43	1.38
3	B	1002	845	C29-C28	3.14	1.44	1.38
3	C	1002	845	C4-N5	3.14	1.37	1.34
3	D	1002	845	C11-C6	2.99	1.42	1.38
2	C	1001	SAH	C4-N3	-2.88	1.31	1.35
2	B	1001	SAH	C4-N3	-2.80	1.31	1.35
2	D	1001	SAH	C4-N3	-2.64	1.31	1.35
3	B	1002	845	C7-C6	2.60	1.42	1.38
3	A	1002	845	C9-C10	2.49	1.44	1.38
3	C	1002	845	C26-N25	2.48	1.39	1.34
3	C	1002	845	C20-C19	2.46	1.56	1.53
3	B	1002	845	C11-C10	2.45	1.43	1.39
2	D	1001	SAH	C8-N9	2.43	1.40	1.36
3	C	1002	845	C9-C10	2.42	1.44	1.38
3	A	1002	845	C33-C32	2.41	1.45	1.41

Continued on next page...

Continued from previous page...

Mol	Chain	Res	Type	Atoms	Z	Observed(Å)	Ideal(Å)
3	C	1002	845	C12-N24	2.39	1.38	1.34
3	B	1002	845	C26-N25	2.37	1.39	1.34
3	A	1002	845	C4-N5	2.33	1.36	1.34
3	A	1002	845	C2-N1	2.32	1.40	1.36
3	C	1002	845	C33-C32	2.28	1.45	1.41
3	A	1002	845	C13-N14	2.26	1.50	1.46
3	C	1002	845	C11-C10	2.20	1.43	1.39
3	B	1002	845	C12-N24	2.19	1.38	1.34
3	B	1002	845	C30-C29	2.17	1.44	1.39
3	D	1002	845	C9-C10	2.14	1.43	1.38
3	B	1002	845	C30-C31	2.13	1.41	1.36
3	A	1002	845	C30-C29	2.09	1.43	1.39
3	C	1002	845	C28-C33	2.06	1.47	1.42
3	D	1002	845	N24-N25	-2.04	1.33	1.37
3	B	1002	845	C13-C10	2.04	1.56	1.51
3	D	1002	845	C30-C31	2.02	1.41	1.36
3	B	1002	845	C28-C33	2.02	1.47	1.42
3	A	1002	845	C30-C31	2.01	1.41	1.36

All (75) bond angle outliers are listed below:

Mol	Chain	Res	Type	Atoms	Z	Observed(°)	Ideal(°)
2	A	1001	SAH	C8-N9-C4	-10.05	99.22	106.90
2	B	1001	SAH	C8-N9-C4	-9.78	99.43	106.90
2	C	1001	SAH	C8-N9-C4	-9.65	99.54	106.90
2	D	1001	SAH	C8-N9-C4	-9.48	99.66	106.90
3	D	1002	845	O27-C26-C28	6.43	125.87	119.23
3	C	1002	845	C2-C3-C4	5.50	108.06	103.77
2	A	1001	SAH	N3-C2-N1	-5.45	124.15	128.71
2	B	1001	SAH	N3-C2-N1	-5.44	124.16	128.71
3	A	1002	845	C2-C3-C4	5.30	107.91	103.77
2	D	1001	SAH	N3-C2-N1	-5.29	124.28	128.71
3	C	1002	845	O27-C26-C28	5.28	124.69	119.23
3	A	1002	845	O27-C26-C28	5.18	124.58	119.23
2	C	1001	SAH	N3-C2-N1	-5.09	124.46	128.71
3	B	1002	845	O27-C26-C28	4.90	124.29	119.23
3	D	1002	845	C2-C3-C4	4.57	107.33	103.77
3	B	1002	845	C2-C3-C4	4.33	107.15	103.77
3	C	1002	845	C3-C4-C15	-3.39	126.07	128.36
3	B	1002	845	C28-C33-C32	3.25	120.63	118.32
2	C	1001	SAH	C5-C4-N9	3.01	111.51	107.16
3	A	1002	845	C28-C33-C32	2.99	120.44	118.32

Continued on next page...

Continued from previous page...

Mol	Chain	Res	Type	Atoms	Z	Observed(°)	Ideal(°)
2	D	1001	SAH	O4'-C1'-N9	-2.95	105.70	108.44
3	B	1002	845	C28-C26-N25	2.91	129.41	123.97
3	D	1002	845	F17-C15-C4	-2.88	109.71	112.76
3	A	1002	845	F17-C15-C4	-2.87	109.72	112.76
2	B	1001	SAH	C5-C4-N9	2.82	111.24	107.16
2	C	1001	SAH	OXT-C-O	2.82	130.45	124.07
3	C	1002	845	C28-C26-N25	2.79	129.19	123.97
2	D	1001	SAH	O2'-C2'-C3'	2.79	120.92	111.83
2	A	1001	SAH	C5-C4-N9	2.75	111.14	107.16
3	D	1002	845	C28-C33-C32	2.74	120.27	118.32
3	A	1002	845	C28-C26-N25	2.74	129.09	123.97
2	D	1001	SAH	C5-C4-N9	2.72	111.09	107.16
3	B	1002	845	C7-C6-C11	-2.69	119.18	121.55
2	C	1001	SAH	C5-C6-N6	2.65	126.72	120.72
2	B	1001	SAH	O4'-C1'-N9	-2.63	106.00	108.44
2	A	1001	SAH	C8-N9-C1'	2.61	131.53	126.38
3	B	1002	845	F18-C15-C4	-2.61	109.99	112.76
2	B	1001	SAH	C5-C6-N6	2.57	126.53	120.72
3	B	1002	845	C3-C4-C15	-2.57	126.62	128.36
2	A	1001	SAH	C5-C6-N6	2.56	126.52	120.72
2	A	1001	SAH	N3-C4-N9	-2.56	120.81	125.43
3	C	1002	845	C4-N5-N1	-2.53	108.49	111.95
2	C	1001	SAH	N3-C4-N9	-2.52	120.88	125.43
3	A	1002	845	F18-C15-C4	-2.51	110.09	112.76
3	C	1002	845	C28-C33-C32	2.51	120.10	118.32
3	C	1002	845	F18-C15-C4	-2.50	110.10	112.76
3	B	1002	845	C11-C6-N1	2.50	121.97	119.10
2	A	1001	SAH	O2'-C2'-C3'	2.45	119.80	111.83
3	C	1002	845	C7-C6-C11	-2.45	119.40	121.55
2	D	1001	SAH	OXT-C-O	2.45	129.60	124.07
3	D	1002	845	C4-N5-N1	-2.42	108.64	111.95
2	B	1001	SAH	N3-C4-N9	-2.41	121.07	125.43
2	D	1001	SAH	N3-C4-N9	-2.41	121.08	125.43
3	B	1002	845	F17-C15-C4	-2.41	110.21	112.76
2	A	1001	SAH	OXT-C-O	2.39	129.48	124.07
2	D	1001	SAH	C5-C6-N6	2.35	126.03	120.72
3	B	1002	845	C34-C35-N36	2.34	112.12	108.17
2	B	1001	SAH	OXT-C-O	2.31	129.30	124.07
3	B	1002	845	C4-N5-N1	-2.31	108.80	111.95
2	D	1001	SAH	C1'-N9-C4	2.28	130.58	126.64
2	C	1001	SAH	O2'-C2'-C3'	2.25	119.14	111.83
2	A	1001	SAH	O4'-C1'-N9	-2.23	106.37	108.44

Continued on next page...

Continued from previous page...

Mol	Chain	Res	Type	Atoms	Z	Observed(°)	Ideal(°)
3	C	1002	845	C34-C35-N36	2.22	111.92	108.17
2	B	1001	SAH	C8-N9-C1'	2.21	130.74	126.38
3	C	1002	845	F16-C15-C4	-2.20	110.42	112.76
3	A	1002	845	C34-C35-N36	2.20	111.89	108.17
3	C	1002	845	C13-N14-C19	2.19	125.40	122.31
3	D	1002	845	C34-C35-N36	2.17	111.83	108.17
2	B	1001	SAH	O2'-C2'-C3'	2.09	118.64	111.83
3	C	1002	845	C3-C4-N5	2.08	108.70	106.50
3	C	1002	845	C11-C6-N1	2.08	121.49	119.10
2	C	1001	SAH	C8-N9-C1'	2.07	130.46	126.38
3	C	1002	845	F17-C15-C4	-2.07	110.57	112.76
3	A	1002	845	C4-N5-N1	-2.06	109.13	111.95
3	D	1002	845	C3-C4-C15	-2.05	126.98	128.36

There are no chirality outliers.

There are no torsion outliers.

There are no ring outliers.

5.7 Other polymers ⓘ

There are no such residues in this entry.

5.8 Polymer linkage issues

There are no chain breaks in this entry.

6 Fit of model and data ⓘ

6.1 Protein, DNA and RNA chains ⓘ

In the following table, the column labelled ‘#RSRZ> 2’ contains the number (and percentage) of RSRZ outliers, followed by percent RSRZ outliers for the chain as percentile scores relative to all X-ray entries and entries of similar resolution. The OWAB column contains the minimum, median, 95th percentile and maximum values of the occupancy-weighted average B-factor per residue. The column labelled ‘Q< 0.9’ lists the number of (and percentage) of residues with an average occupancy less than 0.9.

Mol	Chain	Analysed	<RSRZ>	#RSRZ>2	OWAB(Å ²)	Q<0.9
1	A	343/348 (98%)	-0.33	2 (0%) 86 86	10, 25, 40, 49	0
1	B	343/348 (98%)	-0.39	1 (0%) 91 92	17, 28, 42, 60	0
1	C	343/348 (98%)	-0.46	0 100 100	14, 26, 38, 47	0
1	D	343/348 (98%)	-0.44	1 (0%) 91 92	13, 26, 38, 46	0
All	All	1372/1392 (98%)	-0.41	4 (0%) 91 92	10, 26, 40, 60	0

All (4) RSRZ outliers are listed below:

Mol	Chain	Res	Type	RSRZ
1	A	234	ASP	2.5
1	D	477	TYR	2.2
1	B	144	GLU	2.2
1	A	283	SER	2.2

6.2 Non-standard residues in protein, DNA, RNA chains ⓘ

There are no non-standard protein/DNA/RNA residues in this entry.

6.3 Carbohydrates ⓘ

There are no carbohydrates in this entry.

6.4 Ligands ⓘ

In the following table, the Atoms column lists the number of modelled atoms in the group and the number defined in the chemical component dictionary. LLDF column lists the quality of electron density of the group with respect to its neighbouring residues in protein, DNA or RNA chains. The B-factors column lists the minimum, median, 95th percentile and maximum values of B factors

of atoms in the group. The column labelled 'Q < 0.9' lists the number of atoms with occupancy less than 0.9.

Mol	Type	Chain	Res	Atoms	RSR	LLDF	B-factors(\AA^2)	Q<0.9
4	CL	D	1003	1/1	0.16	1.59	44,44,44,44	0
2	SAH	A	1001	26/26	0.16	0.95	21,26,33,34	0
3	845	B	1002	36/36	0.15	0.43	11,27,44,45	0
2	SAH	B	1001	26/26	0.14	0.25	13,26,30,32	0
3	845	A	1002	36/36	0.15	0.21	17,26,40,41	0
2	SAH	D	1001	26/26	0.14	0.19	16,19,21,22	0
3	845	C	1002	36/36	0.14	0.18	13,27,39,40	0
3	845	D	1002	36/36	0.15	-0.04	18,32,47,47	0
4	CL	A	1003	1/1	0.14	-0.07	47,47,47,47	0
4	CL	B	1003	1/1	0.13	-0.29	53,53,53,53	0
2	SAH	C	1001	26/26	0.12	-0.30	14,19,21,23	0
4	CL	C	1003	1/1	0.10	-0.93	47,47,47,47	0

6.5 Other polymers ⓘ

There are no such residues in this entry.