



# wwPDB X-ray Structure Validation Summary Report i

Mar 1, 2014 – 02:02 AM GMT

PDB ID : 2YD0  
Title : Crystal structure of the soluble domain of human endoplasmic reticulum aminopeptidase 1 ERAP1  
Authors : Vollmar, M.; Kochan, G.; Krojer, T.; Ugochukwu, E.; Muniz, J.R.C.; Raynor, J.; Chaikuad, A.; Allerston, C.; Von Delft, F.; Bountra, C.; Arrowsmith, C.H.; Weigelt, J.; Edwards, A.; Knapp, S.  
Deposited on : 2011-03-17  
Resolution : 2.70 Å(reported)

This is a wwPDB validation summary report for a publicly released PDB entry.  
We welcome your comments at [validation@mail.wwpdb.org](mailto:validation@mail.wwpdb.org)  
A user guide is available at <http://wwpdb.org/ValidationPDFNotes.html>

---

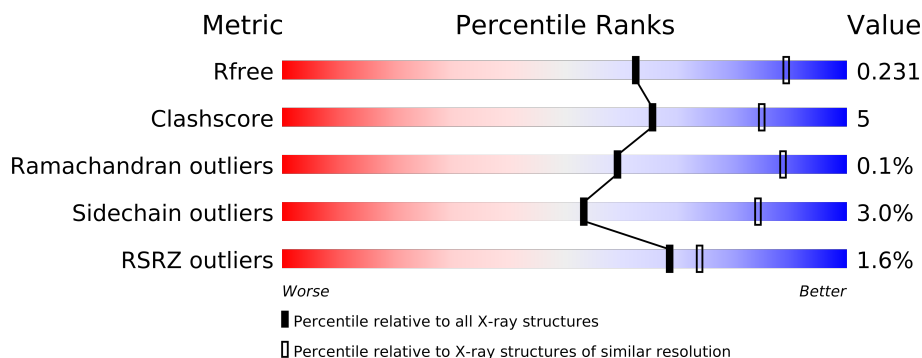
The following versions of software and data (see [references](#)) were used in the production of this report:

MolProbity	:	4.02b-467
Mogul	:	1.15 2013
Xtriage (Phenix)	:	dev-1323
EDS	:	stable22639
Percentile statistics	:	21963
Refmac	:	5.8.0049
CCP4	:	6.3.0 (Settle)
Ideal geometry (proteins)	:	Engh & Huber (2001)
Ideal geometry (DNA, RNA)	:	Parkinson et. al. (1996)
Validation Pipeline (wwPDB-VP)	:	stable22683

# 1 Overall quality at a glance

The reported resolution of this entry is 2.70 Å.

Percentile scores (ranging between 0-100) for global validation metrics of the entry are shown in the following graphic. The table shows the number of entries on which the scores are based.



Metric	Whole archive (#Entries)	Similar resolution (#Entries, resolution range(Å))
$R_{free}$	66092	1557 (2.70-2.70)
Clashscore	79885	1939 (2.70-2.70)
Ramachandran outliers	78287	1905 (2.70-2.70)
Sidechain outliers	78261	1905 (2.70-2.70)
RSRZ outliers	66119	1559 (2.70-2.70)

The table below summarises the geometric issues observed across the polymeric chains and their fit to the electron density. The red, orange, yellow and green segments on the lower bar indicate the fraction of residues that contain outliers for  $\geq 3$ , 2, 1 and 0 types of geometric quality criteria. The upper red bar (where present) indicates the fraction of residues that have poor fit to the electron density.

Mol	Chain	Length	Quality of chain
1	A	897	

The following table lists non-polymeric compounds that are outliers for geometric or electron-density-fit criteria:

Mol	Type	Chain	Res	Geometry	Electron density
5	K	A	1947	-	X
7	BES	A	1950	-	X

## 2 Entry composition

There are 8 unique types of molecules in this entry. The entry contains 7239 atoms, of which 0 are hydrogen and 0 are deuterium.

In the tables below, the ZeroOcc column contains the number of atoms modelled with zero occupancy, the AltConf column contains the number of residues with at least one atom in alternate conformation and the Trace column contains the number of residues modelled with at most 2 atoms.

- Molecule 1 is a protein called ENDOPLASMIC RETICULUM AMINOPEPTIDASE 1.

Mol	Chain	Residues	Atoms					ZeroOcc	AltConf	Trace
1	A	858	Total	C	N	O	S	0	4	0
			6852	4422	1132	1264	34			

There are 2 discrepancies between the modelled and reference sequences:

Chain	Residue	Modelled	Actual	Comment	Reference
A	941	LYS	-	EXPRESSION TAG	UNP Q9NZ08
A	942	LYS	-	EXPRESSION TAG	UNP Q9NZ08

- Molecule 2 is a polymer of unknown type called SUGAR (2-MER).

Mol	Chain	Residues	Atoms				ZeroOcc	AltConf
2	A	2	Total	C	N	O	0	0
			28	16	2	10		
2	A	2	Total	C	N	O	0	0
			28	16	2	10		

There are 4 discrepancies between the modelled and reference sequences:

Chain	Residue	Modelled	Actual	Comment	Reference
A	941	LYS	-	EXPRESSION TAG	UNP Q9NZ08
A	942	LYS	-	EXPRESSION TAG	UNP Q9NZ08
A	941	LYS	-	EXPRESSION TAG	UNP Q9NZ08
A	942	LYS	-	EXPRESSION TAG	UNP Q9NZ08

- Molecule 3 is SUGAR (N-ACETYL-D-GLUCOSAMINE) (three-letter code: NAG) (formula: C<sub>8</sub>H<sub>15</sub>NO<sub>6</sub>).



Mol	Chain	Residues	Atoms				ZeroOcc	AltConf
3	A	1	Total	C	N	O	0	0
			14	8	1	5		

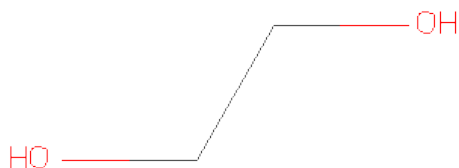
- Molecule 4 is ZINC ION (three-letter code: ZN) (formula: Zn).

Mol	Chain	Residues	Atoms		ZeroOcc	AltConf
4	A	1	Total	Zn	0	0
			1	1		

- Molecule 5 is POTASSIUM ION (three-letter code: K) (formula: K).

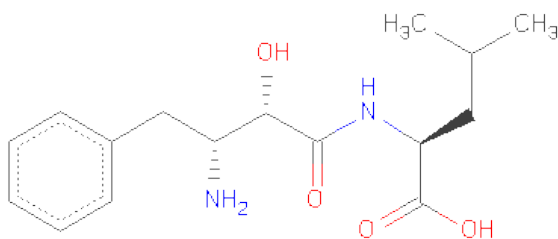
Mol	Chain	Residues	Atoms		ZeroOcc	AltConf
5	A	2	Total	K	0	0
			2	2		

- Molecule 6 is 1,2-ETHANEDIOL (three-letter code: EDO) (formula: C<sub>2</sub>H<sub>6</sub>O<sub>2</sub>).



Mol	Chain	Residues	Atoms			ZeroOcc	AltConf
6	A	1	Total	C	O	0	0
			4	2	2		

- Molecule 7 is 2-(3-AMINO-2-HYDROXY-4-PHENYL-BUTYRYLAMINO)-4-METHYL-PENTANOICACID (three-letter code: BES) (formula:  $C_{16}H_{24}N_2O_4$ ).



Mol	Chain	Residues	Atoms				ZeroOcc	AltConf
7	A	1	Total	C	N	O	0	0
			22	16	2	4		

- Molecule 8 is water.

Mol	Chain	Residues	Atoms		ZeroOcc	AltConf
8	A	288	Total 288	O 288	0	0



## 4 Data and refinement statistics

Property	Value	Source
Space group	P 6 2 2	Depositor
Cell constants a, b, c, $\alpha$ , $\beta$ , $\gamma$	200.95Å 200.95Å 114.22Å 90.00° 90.00° 120.00°	Depositor
Resolution (Å)	19.94 – 2.70 19.92 – 2.70	Depositor EDS
% Data completeness (in resolution range)	99.5 (19.94-2.70) 99.6 (19.92-2.70)	Depositor EDS
$R_{merge}$	0.20	Depositor
$R_{sym}$	(Not available)	Depositor
$\langle I/\sigma(I) \rangle$ <sup>1</sup>	3.02 (at 2.71Å)	Xtriage
Refinement program	REFMAC 5.5.0110	Depositor
R, $R_{free}$	0.152 , 0.215 0.181 , 0.231	Depositor DCC
$R_{free}$ test set	1880 reflections (5.25%)	DCC
Wilson B-factor (Å <sup>2</sup> )	36.8	Xtriage
Anisotropy	0.001	Xtriage
Bulk solvent $k_{sol}$ (e/Å <sup>3</sup> ), $B_{sol}$ (Å <sup>2</sup> )	0.35 , 6.4	EDS
Estimated twinning fraction	No twinning to report.	Xtriage
L-test for twinning	$\langle  L  \rangle = 0.48$ , $\langle L^2 \rangle = 0.31$	Xtriage
Outliers	0 of 37678 reflections	Xtriage
$F_o, F_c$ correlation	0.94	EDS
Total number of atoms	7239	wwPDB-VP
Average B, all atoms (Å <sup>2</sup> )	16.0	wwPDB-VP

Xtriage's analysis on translational NCS is as follows: *The largest off-origin peak in the Patterson function is 2.44% of the height of the origin peak. No significant pseudotranslation is detected.*

<sup>1</sup>Intensities estimated from amplitudes.



## 5 Model quality

### 5.1 Standard geometry

Bond lengths and bond angles in the following residue types are not validated in this section: K, BES, ZN, NAG, EDO

The Z score for a bond length (or angle) is the number of standard deviations the observed value is removed from the expected value. A bond length (or angle) with  $|Z| > 5$  is considered an outlier worth inspection. RMSZ is the root-mean-square of all Z scores of the bond lengths (or angles).

Mol	Chain	Bond lengths		Bond angles	
		RMSZ	$\# Z  > 5$	RMSZ	$\# Z  > 5$
1	A	0.78	0/7038	0.82	9/9554 (0.1%)

Chiral center outliers are detected by calculating the chiral volume of a chiral center and verifying if the center is modelled as a planar moiety or with the opposite hand. A planarity outlier is detected by checking planarity of atoms in a peptide group, atoms in a mainchain group or atoms of a sidechain that are expected to be planar.

Mol	Chain	#Chirality outliers	#Planarity outliers
1	A	0	1

There are no bond length outliers.

The worst 5 of 9 bond angle outliers are listed below:

Mol	Chain	Res	Type	Atoms	Z	Observed( $^{\circ}$ )	Ideal( $^{\circ}$ )
1	A	430	ARG	NE-CZ-NH2	-6.63	116.99	120.30
1	A	579	ARG	NE-CZ-NH1	6.34	123.47	120.30
1	A	430	ARG	NE-CZ-NH1	5.68	123.14	120.30
1	A	885	ARG	NE-CZ-NH1	5.51	123.06	120.30
1	A	825	ASP	CB-CG-OD1	5.51	123.26	118.30

There are no chirality outliers.

All (1) planarity outliers are listed below:

Mol	Chain	Res	Type	Group
1	A	866	LEU	Peptide

## 5.2 Close contacts ⓘ

In the following table, the Non-H and H(model) columns list the number of non-hydrogen atoms and hydrogen atoms in the chain respectively. The H(added) column lists the number of hydrogens added by MolProbity. The Clashes column lists the number of clashes within the asymmetric unit, and the number in parentheses is this value normalized per 1000 atoms of the molecule in the chain. The Symm-Clashes column gives symmetry related clashes, in the same way as for the Clashes column.

Mol	Chain	Non-H	H(model)	H(added)	Clashes	Symm-Clashes
1	A	6852	0	6694	69	0
2	A	56	0	50	3	0
3	A	14	0	13	0	0
4	A	1	0	0	0	0
5	A	2	0	0	0	0
6	A	4	0	6	3	0
7	A	22	0	22	8	0
8	A	288	0	0	3	0
All	All	7239	0	6785	72	0

Clashscore is defined as the number of clashes calculated for the entry per 1000 atoms (including hydrogens) of the entry. The overall clashscore for this entry is 5.

The worst 5 of 72 close contacts within the same asymmetric unit are listed below.

Atom-1	Atom-2	Distance(Å)	Clash(Å)
1:A:559:THR:HG23	1:A:561:TYR:H	1.32	0.93
1:A:366:MET:HE3	1:A:375:ASN:OD1	1.72	0.88
1:A:95:LEU:HD11	1:A:131:ILE:HD11	1.55	0.85
1:A:879:THR:OG1	1:A:911:THR:HG21	1.75	0.85
1:A:95:LEU:HD12	1:A:95:LEU:C	1.97	0.84

There are no symmetry-related clashes.

## 5.3 Torsion angles

### 5.3.1 Protein backbone ⓘ

In the following table, the Percentiles column shows the percent Ramachandran outliers of the chain as a percentile score with respect to all X-ray entries followed by that with respect to entries of similar resolution. The Analysed column shows the number of residues for which the backbone conformation was analysed, and the total number of residues.

Mol	Chain	Analysed	Favoured	Allowed	Outliers	Percentiles
1	A	854/897 (95%)	816 (96%)	37 (4%)	1 (0%)	59 89

All (1) Ramachandran outliers are listed below:

Mol	Chain	Res	Type
1	A	401	PHE

### 5.3.2 Protein sidechains ⓘ

In the following table, the Percentiles column shows the percent sidechain outliers of the chain as a percentile score with respect to all X-ray entries followed by that with respect to entries of similar resolution. The Analysed column shows the number of residues for which the sidechain conformation was analysed, and the total number of residues.

Mol	Chain	Analysed	Rotameric	Outliers	Percentiles
1	A	739/799 (92%)	717 (97%)	22 (3%)	53 84

5 of 22 residues with a non-rotameric sidechain are listed below:

Mol	Chain	Res	Type
1	A	378	PHE
1	A	604	MET
1	A	841	ARG
1	A	410	VAL
1	A	576	MET

Some sidechains can be flipped to improve hydrogen bonding and reduce clashes. There are no such sidechains identified.

### 5.3.3 RNA ⓘ

There are no RNA chains in this entry.

## 5.4 Non-standard residues in protein, DNA, RNA chains ⓘ

There are no non-standard protein/DNA/RNA residues in this entry.

## 5.5 Carbohydrates ⓘ

4 carbohydrates are modelled in this entry.

In the following table, the Counts columns list the number of bonds (or angles) for which Mogul statistics could be retrieved, the number of bonds (or angles) that are observed in the model and the number of bonds (or angles) that are defined in the chemical component dictionary. The Link column lists molecule types, if any, to which the group is linked. The Z score for a bond length (or angle) is the number of standard deviations the observed value is removed from the expected value. A bond length (or angle) with  $|Z| > 2$  is considered an outlier worth inspection. RMSZ is the root-mean-square of all Z scores of the bond lengths (or angles).

Mol	Type	Chain	Res	Link	Bond lengths			Bond angles		
					Counts	RMSZ	$\# Z  > 2$	Counts	RMSZ	$\# Z  > 2$
2	NAG	A	1941	1,2	12,14,15	0.65	0	15,19,21	2.28	4 (26%)
2	NAG	A	1942	1,2	12,14,15	1.11	1 (8%)	15,19,21	2.22	5 (33%)
2	NAG	A	1944	2	12,14,15	0.50	0	15,19,21	2.54	3 (20%)
2	NAG	A	1945	2	12,14,15	0.79	0	15,19,21	2.17	4 (26%)

In the following table, the Chirals column lists the number of chiral outliers, the number of chiral centers analysed, the number of these observed in the model and the number defined in the chemical component dictionary. Similar counts are reported in the Torsion and Rings columns. '-' means no outliers of that kind were identified.

Mol	Type	Chain	Res	Link	Chirals	Torsions	Rings
2	NAG	A	1941	1,2	-	0/6/23/26	0/1/1/1
2	NAG	A	1942	1,2	-	0/6/23/26	0/1/1/1
2	NAG	A	1944	2	-	0/6/23/26	0/1/1/1
2	NAG	A	1945	2	-	0/6/23/26	0/1/1/1

All (1) bond length outliers are listed below:

Mol	Chain	Res	Type	Atoms	Z	Observed(Å)	Ideal(Å)
2	A	1942	NAG	C2-N2	3.01	1.49	1.46

The worst 5 of 16 bond angle outliers are listed below:

Mol	Chain	Res	Type	Atoms	Z	Observed(°)	Ideal(°)
2	A	1944	NAG	O5-C5-C6	7.98	115.36	106.98
2	A	1945	NAG	O5-C5-C6	6.40	113.69	106.98
2	A	1941	NAG	O4-C4-C3	5.65	123.03	110.35
2	A	1942	NAG	O7-C7-C8	-4.87	112.53	122.04
2	A	1941	NAG	O5-C5-C6	4.79	112.00	106.98

There are no chirality outliers.

There are no torsion outliers.

There are no ring outliers.

## 5.6 Ligand geometry

Of 6 ligands modelled in this entry, 3 are monoatomic - leaving 3 for Mogul analysis.

In the following table, the Counts columns list the number of bonds (or angles) for which Mogul statistics could be retrieved, the number of bonds (or angles) that are observed in the model and the number of bonds (or angles) that are defined in the chemical component dictionary. The Link column lists molecule types, if any, to which the group is linked. The Z score for a bond length (or angle) is the number of standard deviations the observed value is removed from the expected value. A bond length (or angle) with  $|Z| > 2$  is considered an outlier worth inspection. RMSZ is the root-mean-square of all Z scores of the bond lengths (or angles).

Mol	Type	Chain	Res	Link	Bond lengths			Bond angles		
					Counts	RMSZ	$\# Z  > 2$	Counts	RMSZ	$\# Z  > 2$
3	NAG	A	1943	1	12,14,15	1.01	1 (8%)	15,19,21	1.99	5 (33%)
6	EDO	A	1949	-	3,3,3	0.91	0	2,2,2	0.29	0
7	BES	A	1950	4	22,22,22	1.22	3 (13%)	29,29,29	1.83	6 (20%)

In the following table, the Chirals column lists the number of chiral outliers, the number of chiral centers analysed, the number of these observed in the model and the number defined in the chemical component dictionary. Similar counts are reported in the Torsion and Rings columns. '-' means no outliers of that kind were identified.

Mol	Type	Chain	Res	Link	Chirals	Torsions	Rings
3	NAG	A	1943	1	-	0/6/23/26	0/1/1/1
6	EDO	A	1949	-	-	0/1/1/1	0/0/0/0
7	BES	A	1950	4	-	0/24/24/24	0/1/1/1

All (4) bond length outliers are listed below:

Mol	Chain	Res	Type	Atoms	Z	Observed(Å)	Ideal(Å)
7	A	1950	BES	C2-C1	3.42	1.58	1.54
3	A	1943	NAG	C2-N2	2.38	1.49	1.46
7	A	1950	BES	C2-C3	-2.17	1.47	1.52
7	A	1950	BES	C6-C1	2.12	1.56	1.54

The worst 5 of 11 bond angle outliers are listed below:

Mol	Chain	Res	Type	Atoms	Z	Observed(°)	Ideal(°)
7	A	1950	BES	O2-C2-C3	-5.49	97.78	110.51
3	A	1943	NAG	O5-C5-C4	4.85	116.81	110.65
7	A	1950	BES	O3-C3-C2	-4.05	111.86	120.03
7	A	1950	BES	C7-C6-C1	3.68	120.23	113.47
7	A	1950	BES	O2-C2-C1	3.38	118.37	110.19

There are no chirality outliers.

There are no torsion outliers.

There are no ring outliers.

## 5.7 Other polymers ⓘ

There are no such residues in this entry.

## 5.8 Polymer linkage issues

There are no chain breaks in this entry.

## 6 Fit of model and data ⓘ

### 6.1 Protein, DNA and RNA chains ⓘ

In the following table, the column labelled ‘#RSRZ > 2’ contains the number (and percentage) of RSRZ outliers, followed by percent RSRZ outliers for the chain as percentile scores relative to all X-ray entries and entries of similar resolution. The OWAB column contains the minimum, median, 95<sup>th</sup> percentile and maximum values of the occupancy-weighted average B-factor per residue. The column labelled ‘Q < 0.9’ lists the number of (and percentage) of residues with an average occupancy less than 0.9.

Mol	Chain	Analysed	<RSRZ>	#RSRZ>2	OWAB(Å <sup>2</sup> )	Q<0.9
1	A	858/897 (95%)	-0.38	14 (1%) 68 74	5, 15, 28, 58	0

The worst 5 of 14 RSRZ outliers are listed below:

Mol	Chain	Res	Type	RSRZ
1	A	514	GLY	3.7
1	A	558	ASP	3.4
1	A	575	ASP	3.2
1	A	576	MET	3.1
1	A	559	THR	3.1

### 6.2 Non-standard residues in protein, DNA, RNA chains ⓘ

There are no non-standard protein/DNA/RNA residues in this entry.

### 6.3 Carbohydrates ⓘ

In the following table, the Atoms column lists the number of modelled atoms in the group and the number defined in the chemical component dictionary. LLDF column lists the quality of electron density of the group with respect to its neighbouring residues in protein, DNA or RNA chains. The B-factors column lists the minimum, median, 95<sup>th</sup> percentile and maximum values of B factors of atoms in the group. The column labelled ‘Q < 0.9’ lists the number of atoms with occupancy less than 0.9.

Mol	Type	Chain	Res	Atoms	RSR	LLDF	B-factors(Å <sup>2</sup> )	Q<0.9
2	NAG	A	1942	14/15	0.24	8.57	27,47,60,63	0
2	NAG	A	1944	14/15	0.22	0.73	33,46,57,61	0
2	NAG	A	1941	14/15	0.15	0.56	19,29,40,41	0
2	NAG	A	1945	14/15	0.37	-	36,57,64,70	0

## 6.4 Ligands

In the following table, the Atoms column lists the number of modelled atoms in the group and the number defined in the chemical component dictionary. LLDF column lists the quality of electron density of the group with respect to its neighbouring residues in protein, DNA or RNA chains. The B-factors column lists the minimum, median, 95<sup>th</sup> percentile and maximum values of B factors of atoms in the group. The column labelled 'Q < 0.9' lists the number of atoms with occupancy less than 0.9.

Mol	Type	Chain	Res	Atoms	RSR	LLDF	B-factors(Å <sup>2</sup> )	Q<0.9
7	BES	A	1950	22/22	0.26	5.26	8,58,80,91	0
5	K	A	1947	1/1	0.19	5.03	52,52,52,52	0
3	NAG	A	1943	14/15	0.31	1.31	37,68,94,98	0
6	EDO	A	1949	4/4	0.16	0.29	37,43,53,64	0
5	K	A	1948	1/1	0.08	-1.65	27,27,27,27	0
4	ZN	A	1946	1/1	0.08	-4.50	25,25,25,25	0

## 6.5 Other polymers

There are no such residues in this entry.