



# Full wwPDB X-ray Structure Validation Report

Feb 27, 2014 – 11:12 AM GMT

PDB ID : 1YJZ  
Title : K226M Mutant Of Serine HydroxymethyltransferaseFrom B. Stearothermophilus  
Authors : Bhavani, S.; Trivedi, V.; Jala, V.R.; Subramanya, H.S.; Kaul, P.; Purnima, K.; Prakash, V.; Appaji, R.N.; Savithri, H.S.  
Deposited on : 2005-01-16  
Resolution : 2.10 Å(reported)

This is a full wwPDB validation report for a publicly released PDB entry.  
We welcome your comments at [validation@mail.wwpdb.org](mailto:validation@mail.wwpdb.org)  
A user guide is available at <http://wwpdb.org/ValidationPDFNotes.html>

---

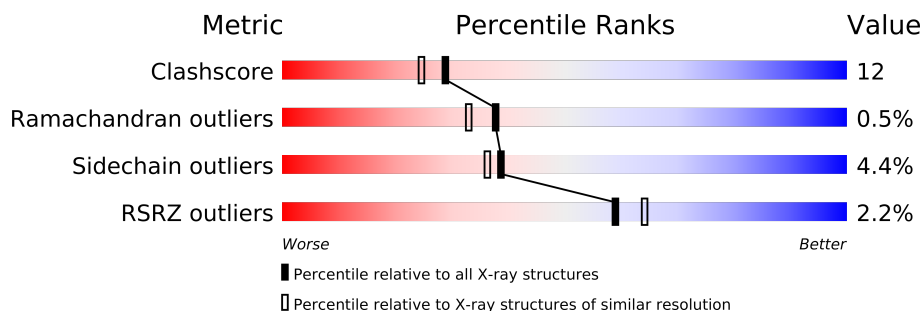
The following versions of software and data (see [references](#)) were used in the production of this report:

MolProbity : 4.02b-467  
Mogul : 1.15 2013  
Xtriage (Phenix) : dev-1323  
EDS : stable22639  
Percentile statistics : 21963  
Refmac : 5.8.0049  
CCP4 : 6.3.0 (Settle)  
Ideal geometry (proteins) : Engh & Huber (2001)  
Ideal geometry (DNA, RNA) : Parkinson et. al. (1996)  
Validation Pipeline (wwPDB-VP) : stable22683

# 1 Overall quality at a glance

The reported resolution of this entry is 2.10 Å.

Percentile scores (ranging between 0-100) for global validation metrics of the entry are shown in the following graphic. The table shows the number of entries on which the scores are based.



Metric	Whole archive (#Entries)	Similar resolution (#Entries, resolution range(Å))
Clashscore	79885	3649 (2.10-2.10)
Ramachandran outliers	78287	3610 (2.10-2.10)
Sidechain outliers	78261	3611 (2.10-2.10)
RSRZ outliers	66119	3013 (2.10-2.10)

The table below summarises the geometric issues observed across the polymeric chains and their fit to the electron density. The red, orange, yellow and green segments on the lower bar indicate the fraction of residues that contain outliers for  $\geq 3$ , 2, 1 and 0 types of geometric quality criteria. The upper red bar (where present) indicates the fraction of residues that have poor fit to the electron density.

Mol	Chain	Length	Quality of chain
1	A	419	

## 2 Entry composition i

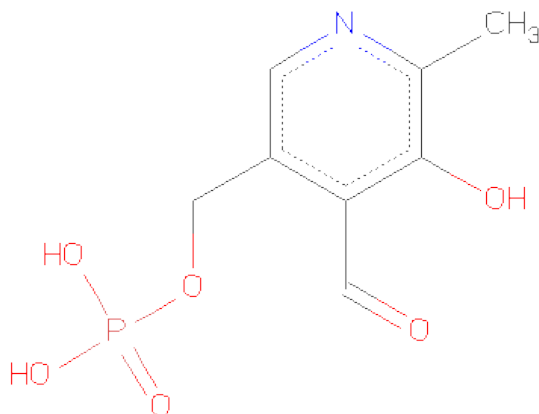
There are 3 unique types of molecules in this entry. The entry contains 3267 atoms, of which 0 are hydrogen and 0 are deuterium.

In the tables below, the ZeroOcc column contains the number of atoms modelled with zero occupancy, the AltConf column contains the number of residues with at least one atom in alternate conformation and the Trace column contains the number of residues modelled with at most 2 atoms.

- Molecule 1 is a protein called SERINE HYDROXYMETHYLTRANSFERASE.

Mol	Chain	Residues	Atoms					ZeroOcc	AltConf	Trace
			Total	C	N	O	S			
1	A	405	3115	1969	550	584	12	0	0	0

- Molecule 2 is PYRIDOXAL-5'-PHOSPHATE (three-letter code: PLP) (formula: C<sub>8</sub>H<sub>10</sub>NO<sub>6</sub>P).



Mol	Chain	Residues	Atoms					ZeroOcc	AltConf
			Total	C	N	O	P		
2	A	1	15	8	1	5	1	0	0

- Molecule 3 is water.

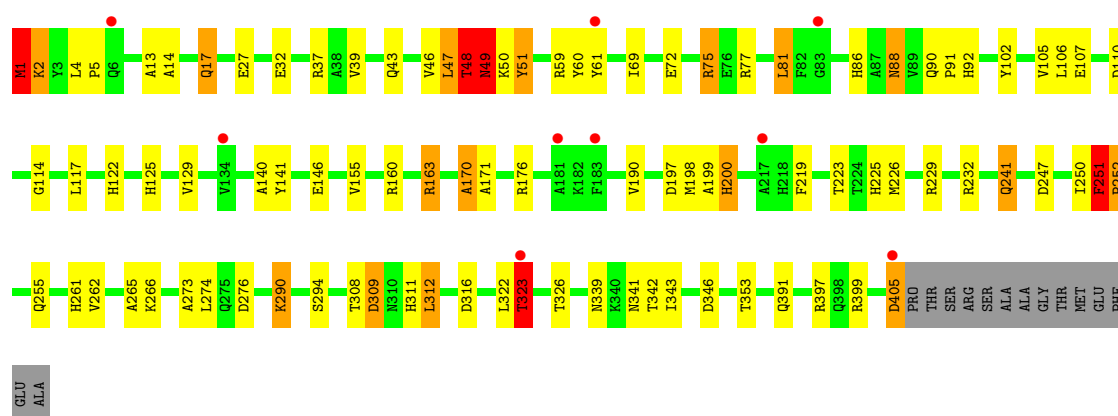
Mol	Chain	Residues	Atoms		ZeroOcc	AltConf
3	A	137	Total	O	0	0
			137	137		

### 3 Residue-property plots

These plots are drawn for all protein, RNA and DNA chains in the entry. The first graphic for a chain summarises the proportions of errors displayed in the second graphic. The second graphic shows the sequence view annotated by issues in geometry and electron density. Residues are color-coded according to the number of geometric quality criteria for which they contain at least one outlier: green = 0, yellow = 1, orange = 2 and red = 3 or more. A red dot above a residue indicates a poor fit to the electron density ( $RSRZ > 2$ ). Stretches of 2 or more consecutive residues without any outlier are shown as a green connector. Residues present in the sample, but not in the model, are shown in grey.

#### • Molecule 1: SERINE HYDROXYMETHYLTRANSFERASE

Chain A: 



## 4 Data and refinement statistics

Property	Value	Source
Space group	P 21 21 2	Depositor
Cell constants a, b, c, $\alpha$ , $\beta$ , $\gamma$	61.05Å 106.52Å 56.90Å 90.00° 90.00° 90.00°	Depositor
Resolution (Å)	10.00 – 2.10 19.95 – 2.10	Depositor EDS
% Data completeness (in resolution range)	(Not available) (10.00-2.10) 62.7 (19.95-2.10)	Depositor EDS
$R_{merge}$	(Not available)	Depositor
$R_{sym}$	(Not available)	Depositor
$\langle I/\sigma(I) \rangle$ <sup>1</sup>	6.34 (at 2.09Å)	Xtriage
Refinement program	REFMAC	Depositor
R, $R_{free}$	0.212 , 0.261 0.267 , (Not available)	Depositor DCC
$R_{free}$ test set	No test flags present.	DCC
Wilson B-factor (Å <sup>2</sup> )	18.1	Xtriage
Anisotropy	0.744	Xtriage
Bulk solvent $k_{sol}$ (e/Å <sup>3</sup> ), $B_{sol}$ (Å <sup>2</sup> )	0.39 , 44.0	EDS
Estimated twinning fraction	No twinning to report.	Xtriage
L-test for twinning	$\langle  L  \rangle = 0.50$ , $\langle L^2 \rangle = 0.34$	Xtriage
Outliers	0 of 14296 reflections	Xtriage
$F_o, F_c$ correlation	0.87	EDS
Total number of atoms	3267	wwPDB-VP
Average B, all atoms (Å <sup>2</sup> )	19.0	wwPDB-VP

Xtriage's analysis on translational NCS is as follows: *The largest off-origin peak in the Patterson function is 5.91% of the height of the origin peak. No significant pseudotranslation is detected.*

<sup>1</sup>Intensities estimated from amplitudes.

## 5 Model quality i

### 5.1 Standard geometry i

Bond lengths and bond angles in the following residue types are not validated in this section: PLP

The Z score for a bond length (or angle) is the number of standard deviations the observed value is removed from the expected value. A bond length (or angle) with  $|Z| > 5$  is considered an outlier worth inspection. RMSZ is the root-mean-square of all Z scores of the bond lengths (or angles).

Mol	Chain	Bond lengths		Bond angles	
		RMSZ	$\# Z  > 5$	RMSZ	$\# Z  > 5$
1	A	0.78	6/3178 (0.2%)	1.61	54/4308 (1.3%)

Chiral center outliers are detected by calculating the chiral volume of a chiral center and verifying if the center is modelled as a planar moiety or with the opposite hand. A planarity outlier is detected by checking planarity of atoms in a peptide group, atoms in a mainchain group or atoms of a sidechain that are expected to be planar.

Mol	Chain	#Chirality outliers	#Planarity outliers
1	A	1	5

All (6) bond length outliers are listed below:

Mol	Chain	Res	Type	Atoms	Z	Observed(Å)	Ideal(Å)
1	A	323	THR	CA-C	12.75	1.86	1.52
1	A	2	LYS	CB-CG	-9.35	1.27	1.52
1	A	48	THR	C-O	8.13	1.38	1.23
1	A	1	MET	CB-CG	-7.86	1.26	1.51
1	A	309	ASP	N-CA	6.25	1.58	1.46
1	A	309	ASP	CA-C	5.97	1.68	1.52

All (54) bond angle outliers are listed below:

Mol	Chain	Res	Type	Atoms	Z	Observed(°)	Ideal(°)
1	A	1	MET	CA-CB-CG	28.86	162.37	113.30
1	A	309	ASP	CB-CA-C	20.81	152.03	110.40
1	A	2	LYS	CB-CG-CD	17.49	157.08	111.60
1	A	309	ASP	CA-CB-CG	16.11	148.85	113.40
1	A	17	GLN	CA-CB-CG	-14.11	82.36	113.40
1	A	323	THR	CB-CA-C	-13.75	74.48	111.60
1	A	1	MET	CB-CG-SD	12.74	150.61	112.40

*Continued on next page...*

*Continued from previous page...*

Mol	Chain	Res	Type	Atoms	Z	Observed(°)	Ideal(°)
1	A	2	LYS	CA-CB-CG	12.24	140.34	113.40
1	A	397	ARG	NE-CZ-NH2	-11.65	114.48	120.30
1	A	48	THR	N-CA-CB	11.58	132.31	110.30
1	A	48	THR	CA-C-N	9.68	138.50	117.20
1	A	48	THR	CA-C-O	-9.24	100.70	120.10
1	A	322	LEU	C-N-CA	9.01	144.22	121.70
1	A	37	ARG	CD-NE-CZ	8.90	136.06	123.60
1	A	37	ARG	NE-CZ-NH1	8.73	124.67	120.30
1	A	397	ARG	NE-CZ-NH1	8.70	124.65	120.30
1	A	309	ASP	CB-CG-OD1	-8.52	110.63	118.30
1	A	102	TYR	CB-CG-CD1	8.41	126.05	121.00
1	A	48	THR	N-CA-C	-8.34	88.47	111.00
1	A	251	PHE	CA-C-O	-8.15	102.99	120.10
1	A	399	ARG	NE-CZ-NH2	-8.12	116.24	120.30
1	A	69	ILE	N-CA-CB	7.99	129.17	110.80
1	A	59	ARG	CD-NE-CZ	7.70	134.38	123.60
1	A	323	THR	N-CA-C	-7.40	91.02	111.00
1	A	102	TYR	CB-CG-CD2	-7.35	116.59	121.00
1	A	229	ARG	NE-CZ-NH1	7.21	123.91	120.30
1	A	17	GLN	CB-CA-C	-7.05	96.30	110.40
1	A	48	THR	C-N-CA	6.92	138.99	121.70
1	A	37	ARG	NE-CZ-NH2	-6.75	116.92	120.30
1	A	77	ARG	NE-CZ-NH1	-6.72	116.94	120.30
1	A	276	ASP	CB-CG-OD1	6.62	124.26	118.30
1	A	163	ARG	NE-CZ-NH1	-6.56	117.02	120.30
1	A	77	ARG	NE-CZ-NH2	6.46	123.53	120.30
1	A	397	ARG	CD-NE-CZ	6.43	132.60	123.60
1	A	129	VAL	N-CA-CB	6.41	125.60	111.50
1	A	49	ASN	N-CA-C	6.38	128.24	111.00
1	A	252	PRO	CA-N-CD	-6.38	102.56	111.50
1	A	339	ASN	CB-CA-C	-6.37	97.67	110.40
1	A	49	ASN	N-CA-CB	6.13	121.64	110.60
1	A	323	THR	CA-C-O	-6.03	107.45	120.10
1	A	50	LYS	N-CA-CB	-5.89	99.99	110.60
1	A	309	ASP	N-CA-C	-5.82	95.29	111.00
1	A	252	PRO	N-CA-CB	5.71	110.15	103.30
1	A	229	ARG	NE-CZ-NH2	-5.70	117.45	120.30
1	A	32	GLU	CB-CG-CD	5.61	129.35	114.20
1	A	171	ALA	N-CA-CB	-5.61	102.25	110.10
1	A	232	ARG	NE-CZ-NH2	-5.55	117.53	120.30
1	A	312	LEU	CA-CB-CG	5.46	127.85	115.30
1	A	47	LEU	CA-C-N	-5.42	105.28	117.20

*Continued on next page...*

*Continued from previous page...*

Mol	Chain	Res	Type	Atoms	Z	Observed(°)	Ideal(°)
1	A	405	ASP	CB-CG-OD2	5.41	123.17	118.30
1	A	316	ASP	CB-CG-OD1	5.33	123.09	118.30
1	A	75	ARG	NE-CZ-NH1	5.15	122.88	120.30
1	A	309	ASP	CB-CG-OD2	5.15	122.94	118.30
1	A	160	ARG	CD-NE-CZ	5.09	130.73	123.60

All (1) chirality outliers are listed below:

Mol	Chain	Res	Type	Atom
1	A	309	ASP	CA

All (5) planarity outliers are listed below:

Mol	Chain	Res	Type	Group
1	A	251	PHE	Mainchain,Peptide
1	A	323	THR	Mainchain
1	A	48	THR	Mainchain
1	A	49	ASN	Mainchain

## 5.2 Close contacts ⓘ

In the following table, the Non-H and H(model) columns list the number of non-hydrogen atoms and hydrogen atoms in the chain respectively. The H(added) column lists the number of hydrogens added by MolProbity. The Clashes column lists the number of clashes within the asymmetric unit, and the number in parentheses is this value normalized per 1000 atoms of the molecule in the chain. The Symm-Clashes column gives symmetry related clashes, in the same way as for the Clashes column.

Mol	Chain	Non-H	H(model)	H(added)	Clashes	Symm-Clashes
1	A	3115	0	3089	77	0
2	A	15	0	6	2	0
3	A	137	0	0	7	0
All	All	3267	0	3095	77	0

Clashscore is defined as the number of clashes calculated for the entry per 1000 atoms (including hydrogens) of the entry. The overall clashscore for this entry is 12.

All (77) close contacts within the same asymmetric unit are listed below.

Atom-1	Atom-2	Distance(Å)	Clash(Å)
1:A:49:ASN:HA	3:A:518:HOH:O	1.11	1.26
1:A:323:THR:HG21	1:A:326:THR:OG1	1.32	1.24

*Continued on next page...*



*Continued from previous page...*

Atom-1	Atom-2	Distance(Å)	Clash(Å)
1:A:13:ALA:O	1:A:17:GLN:HG3	1.44	1.18
1:A:48:THR:O	3:A:518:HOH:O	1.62	1.15
1:A:323:THR:CG2	1:A:326:THR:OG1	1.97	1.12
1:A:1:MET:SD	1:A:4:LEU:HD23	1.90	1.11
1:A:17:GLN:NE2	3:A:581:HOH:O	1.84	1.05
1:A:48:THR:C	3:A:518:HOH:O	1.94	0.92
1:A:323:THR:CG2	1:A:326:THR:CB	2.51	0.89
1:A:323:THR:HG21	1:A:326:THR:CB	2.04	0.86
1:A:48:THR:HA	1:A:261:HIS:CD2	2.11	0.86
1:A:323:THR:HG21	1:A:326:THR:HG1	1.38	0.81
1:A:92:HIS:H	1:A:255:GLN:HE22	1.32	0.77
1:A:47:LEU:O	1:A:48:THR:C	2.20	0.76
1:A:13:ALA:O	1:A:17:GLN:CG	2.30	0.75
1:A:290:LYS:HE3	1:A:308:THR:O	1.88	0.74
1:A:323:THR:HG23	1:A:326:THR:CB	2.21	0.70
1:A:261:HIS:H	1:A:261:HIS:CD2	2.10	0.70
1:A:323:THR:HG23	1:A:326:THR:HB	1.73	0.69
1:A:323:THR:CG2	1:A:326:THR:HB	2.23	0.68
1:A:1:MET:SD	1:A:4:LEU:CD2	2.78	0.67
1:A:60:TYR:O	1:A:61:TYR:HD1	1.78	0.66
1:A:323:THR:CB	1:A:326:THR:H	2.11	0.63
1:A:14:ALA:O	1:A:17:GLN:HB2	1.99	0.62
1:A:311:HIS:H	1:A:311:HIS:HD1	1.46	0.61
1:A:323:THR:OG1	1:A:326:THR:N	2.33	0.60
1:A:105:VAL:HG23	1:A:106:LEU:HG	1.84	0.60
1:A:176:ARG:HD2	1:A:309:ASP:OD1	2.03	0.58
1:A:200:HIS:HD2	1:A:311:HIS:NE2	2.04	0.55
1:A:39:VAL:HG13	1:A:265:ALA:HB1	1.89	0.54
1:A:261:HIS:HD2	1:A:261:HIS:H	1.56	0.53
1:A:4:LEU:HB3	1:A:5:PRO:HD3	1.91	0.53
1:A:105:VAL:HG11	1:A:219:PHE:CE1	2.44	0.53
1:A:323:THR:N	1:A:323:THR:C	2.38	0.52
1:A:343:ILE:O	1:A:346:ASP:HB2	2.10	0.51
1:A:122:HIS:H	1:A:125:HIS:CD2	2.30	0.50
1:A:223:THR:HB	1:A:225:HIS:CE1	2.47	0.50
1:A:72:GLU:CD	1:A:75:ARG:HH21	2.15	0.49
1:A:92:HIS:H	1:A:255:GLN:NE2	2.07	0.49
1:A:27:GLU:HB2	3:A:509:HOH:O	2.12	0.49
1:A:81:LEU:HD13	1:A:274:LEU:CD2	2.43	0.48
1:A:323:THR:HG23	1:A:326:THR:OG1	2.00	0.48
1:A:81:LEU:HD13	1:A:274:LEU:HD23	1.96	0.48
1:A:163:ARG:HH12	1:A:190:VAL:HA	1.79	0.48

*Continued on next page...*

*Continued from previous page...*

Atom-1	Atom-2	Distance(Å)	Clash(Å)
1:A:342:THR:HG22	1:A:353:THR:HG22	1.95	0.48
1:A:197:ASP:OD2	2:A:501:PLP:N1	2.47	0.47
1:A:86:HIS:HE1	1:A:247:ASP:OD1	1.98	0.47
1:A:48:THR:HA	1:A:261:HIS:CG	2.49	0.46
1:A:170:ALA:HB3	1:A:197:ASP:O	2.14	0.46
1:A:46:VAL:O	1:A:49:ASN:N	2.34	0.46
1:A:51:TYR:HB3	1:A:61:TYR:CE2	2.51	0.46
1:A:49:ASN:CA	3:A:518:HOH:O	1.95	0.45
1:A:43:GLN:HG2	1:A:265:ALA:HB2	2.00	0.44
1:A:262:VAL:HG12	1:A:266:LYS:HE3	1.99	0.44
1:A:141:TYR:CG	1:A:155:VAL:HG22	2.52	0.44
1:A:51:TYR:HB3	1:A:61:TYR:CD2	2.53	0.44
1:A:49:ASN:N	3:A:518:HOH:O	1.85	0.44
1:A:88:ASN:HD22	1:A:91:PRO:HD3	1.82	0.44
1:A:114:GLY:O	1:A:140:ALA:HA	2.18	0.43
1:A:261:HIS:N	1:A:261:HIS:CD2	2.82	0.43
1:A:91:PRO:HA	1:A:255:GLN:HE22	1.82	0.43
1:A:88:ASN:HD22	1:A:88:ASN:C	2.21	0.43
1:A:88:ASN:ND2	1:A:91:PRO:HD3	2.34	0.43
1:A:198:MET:O	1:A:199:ALA:C	2.58	0.42
1:A:107:GLU:HG2	1:A:110:ASP:OD1	2.18	0.42
1:A:226:MET:CE	2:A:501:PLP:C4A	2.97	0.42
1:A:163:ARG:NH1	1:A:190:VAL:HB	2.35	0.42
1:A:88:ASN:ND2	1:A:90:GLN:H	2.18	0.42
1:A:1:MET:HG2	1:A:5:PRO:HD3	2.01	0.42
1:A:290:LYS:HD2	1:A:308:THR:HG23	2.02	0.42
1:A:51:TYR:CB	1:A:61:TYR:CE2	3.02	0.42
1:A:241:GLN:CD	1:A:241:GLN:H	2.24	0.42
1:A:251:PHE:CD2	1:A:251:PHE:C	2.94	0.41
1:A:250:ILE:HA	1:A:250:ILE:HD13	1.98	0.41
1:A:391:GLN:H	1:A:391:GLN:HG2	1.57	0.41
1:A:90:GLN:N	1:A:91:PRO:CD	2.84	0.40
1:A:81:LEU:HD21	1:A:273:ALA:HB3	2.02	0.40

There are no symmetry-related clashes.

## 5.3 Torsion angles

### 5.3.1 Protein backbone ⓘ

In the following table, the Percentiles column shows the percent Ramachandran outliers of the chain as a percentile score with respect to all X-ray entries followed by that with respect to entries

of similar resolution. The Analysed column shows the number of residues for which the backbone conformation was analysed, and the total number of residues.

Mol	Chain	Analysed	Favoured	Allowed	Outliers	Percentiles	
1	A	403/419 (96%)	387 (96%)	14 (4%)	2 (0%)	38	33

All (2) Ramachandran outliers are listed below:

Mol	Chain	Res	Type
1	A	170	ALA
1	A	252	PRO

### 5.3.2 Protein sidechains ⓘ

In the following table, the Percentiles column shows the percent sidechain outliers of the chain as a percentile score with respect to all X-ray entries followed by that with respect to entries of similar resolution. The Analysed column shows the number of residues for which the sidechain conformation was analysed, and the total number of residues.

Mol	Chain	Analysed	Rotameric	Outliers	Percentiles	
1	A	321/331 (97%)	307 (96%)	14 (4%)	39	36

All (14) residues with a non-rotameric sidechain are listed below:

Mol	Chain	Res	Type
1	A	1	MET
1	A	2	LYS
1	A	51	TYR
1	A	81	LEU
1	A	88	ASN
1	A	117	LEU
1	A	146	GLU
1	A	200	HIS
1	A	241	GLN
1	A	290	LYS
1	A	294	SER
1	A	312	LEU
1	A	341	ASN
1	A	405	ASP

Some sidechains can be flipped to improve hydrogen bonding and reduce clashes. All (12) such sidechains are listed below:

Mol	Chain	Res	Type
1	A	86	HIS
1	A	88	ASN
1	A	90	GLN
1	A	96	GLN
1	A	125	HIS
1	A	135	GLN
1	A	200	HIS
1	A	255	GLN
1	A	261	HIS
1	A	275	GLN
1	A	297	GLN
1	A	386	ASN

### 5.3.3 RNA ⓘ

There are no RNA chains in this entry.

## 5.4 Non-standard residues in protein, DNA, RNA chains ⓘ

There are no non-standard protein/DNA/RNA residues in this entry.

## 5.5 Carbohydrates ⓘ

There are no carbohydrates in this entry.

## 5.6 Ligand geometry ⓘ

1 ligand is modelled in this entry.

In the following table, the Counts columns list the number of bonds (or angles) for which Mogul statistics could be retrieved, the number of bonds (or angles) that are observed in the model and the number of bonds (or angles) that are defined in the chemical component dictionary. The Link column lists molecule types, if any, to which the group is linked. The Z score for a bond length (or angle) is the number of standard deviations the observed value is removed from the expected value. A bond length (or angle) with  $|Z| > 2$  is considered an outlier worth inspection. RMSZ is the root-mean-square of all Z scores of the bond lengths (or angles).

Mol	Type	Chain	Res	Link	Bond lengths			Bond angles		
					Counts	RMSZ	# $ Z  > 2$	Counts	RMSZ	# $ Z  > 2$
2	PLP	A	501	-	14,15,16	1.57	2 (14%)	20,22,23	2.77	10 (50%)

In the following table, the Chirals column lists the number of chiral outliers, the number of chiral centers analysed, the number of these observed in the model and the number defined in the chemical component dictionary. Similar counts are reported in the Torsion and Rings columns. '-' means no outliers of that kind were identified.

Mol	Type	Chain	Res	Link	Chirals	Torsions	Rings
2	PLP	A	501	-	-	0/6/6/8	0/1/1/1

All (2) bond length outliers are listed below:

Mol	Chain	Res	Type	Atoms	Z	Observed(Å)	Ideal(Å)
2	A	501	PLP	C3-C2	3.38	1.43	1.40
2	A	501	PLP	C6-N1	2.02	1.39	1.34

All (10) bond angle outliers are listed below:

Mol	Chain	Res	Type	Atoms	Z	Observed(°)	Ideal(°)
2	A	501	PLP	O4P-C5A-C5	5.54	120.52	109.26
2	A	501	PLP	C6-N1-C2	4.80	129.56	119.28
2	A	501	PLP	C3-C2-N1	-4.65	114.27	120.66
2	A	501	PLP	C2A-C2-C3	4.52	126.52	121.02
2	A	501	PLP	C5A-C5-C4	3.33	129.17	121.41
2	A	501	PLP	O3-C3-C2	3.16	123.22	117.61
2	A	501	PLP	C5-C6-N1	-2.99	118.47	123.86
2	A	501	PLP	O3P-P-O1P	2.70	119.28	110.44
2	A	501	PLP	C3-C4-C5	2.46	125.95	121.29
2	A	501	PLP	C4-C3-C2	-2.07	117.30	119.67

There are no chirality outliers.

There are no torsion outliers.

There are no ring outliers.

## 5.7 Other polymers ⓘ

There are no such residues in this entry.

## 5.8 Polymer linkage issues

There are no chain breaks in this entry.

## 6 Fit of model and data ⓘ

### 6.1 Protein, DNA and RNA chains ⓘ

In the following table, the column labelled ‘#RSRZ> 2’ contains the number (and percentage) of RSRZ outliers, followed by percent RSRZ outliers for the chain as percentile scores relative to all X-ray entries and entries of similar resolution. The OWAB column contains the minimum, median, 95<sup>th</sup> percentile and maximum values of the occupancy-weighted average B-factor per residue. The column labelled ‘Q< 0.9’ lists the number of (and percentage) of residues with an average occupancy less than 0.9.

Mol	Chain	Analysed	<RSRZ>	#RSRZ>2	OWAB(Å <sup>2</sup> )	Q<0.9
1	A	405/419 (96%)	0.56	9 (2%) 59 64	10, 17, 29, 46	0

All (9) RSRZ outliers are listed below:

Mol	Chain	Res	Type	RSRZ
1	A	323	THR	3.7
1	A	6	GLN	3.4
1	A	61	TYR	2.6
1	A	405	ASP	2.5
1	A	134	VAL	2.2
1	A	181	ALA	2.1
1	A	217	ALA	2.1
1	A	83	GLY	2.0
1	A	183	PHE	2.0

### 6.2 Non-standard residues in protein, DNA, RNA chains ⓘ

There are no non-standard protein/DNA/RNA residues in this entry.

### 6.3 Carbohydrates ⓘ

There are no carbohydrates in this entry.

### 6.4 Ligands ⓘ

In the following table, the Atoms column lists the number of modelled atoms in the group and the number defined in the chemical component dictionary. LLDF column lists the quality of electron density of the group with respect to its neighbouring residues in protein, DNA or RNA chains. The B-factors column lists the minimum, median, 95<sup>th</sup> percentile and maximum values of B factors

of atoms in the group. The column labelled 'Q< 0.9' lists the number of atoms with occupancy less than 0.9.

Mol	Type	Chain	Res	Atoms	RSR	LLDF	B-factors( $\text{\AA}^2$ )	Q<0.9
2	PLP	A	501	15/16	0.13	-0.09	8,12,14,15	0

## 6.5 Other polymers ⓘ

There are no such residues in this entry.