



Full wwPDB X-ray Structure Validation Report

Feb 28, 2014 – 03:23 AM GMT

PDB ID : 2YOO
Title : Cholest-4-en-3-one bound structure of CYP142 from Mycobacterium smegmatis
Authors : Garcia-Fernandez, E.; Frank, D.J.; Galan, B.; Kells, P.M.; Podust, L.M.; Garcia, J.L.; Ortiz de Montellano, P.R.
Deposited on : 2012-10-25
Resolution : 1.69 Å(reported)

This is a full wwPDB validation report for a publicly released PDB entry.
We welcome your comments at validation@mail.wwpdb.org
A user guide is available at <http://wwpdb.org/ValidationPDFNotes.html>

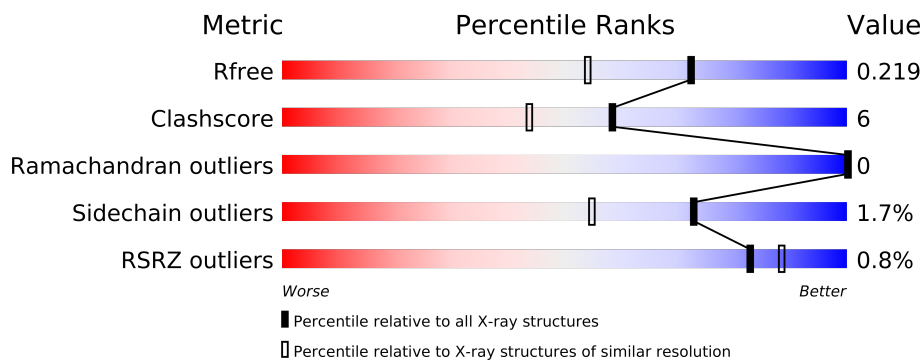
The following versions of software and data (see [references](#)) were used in the production of this report:

MolProbity : 4.02b-467
Mogul : 1.15 2013
Xtriage (Phenix) : dev-1323
EDS : stable22639
Percentile statistics : 21963
Refmac : 5.8.0049
CCP4 : 6.3.0 (Settle)
Ideal geometry (proteins) : Engh & Huber (2001)
Ideal geometry (DNA, RNA) : Parkinson et. al. (1996)
Validation Pipeline (wwPDB-VP) : stable22683

1 Overall quality at a glance

The reported resolution of this entry is 1.69 Å.

Percentile scores (ranging between 0-100) for global validation metrics of the entry are shown in the following graphic. The table shows the number of entries on which the scores are based.



Metric	Whole archive (#Entries)	Similar resolution (#Entries, resolution range(Å))
R_{free}	66092	2456 (1.70-1.70)
Clashscore	79885	2929 (1.70-1.70)
Ramachandran outliers	78287	2878 (1.70-1.70)
Sidechain outliers	78261	2878 (1.70-1.70)
RSRZ outliers	66119	2456 (1.70-1.70)

The table below summarises the geometric issues observed across the polymeric chains and their fit to the electron density. The red, orange, yellow and green segments on the lower bar indicate the fraction of residues that contain outliers for ≥ 3 , 2, 1 and 0 types of geometric quality criteria. The upper red bar (where present) indicates the fraction of residues that have poor fit to the electron density.

Mol	Chain	Length	Quality of chain
1	A	407	
1	B	407	
1	C	407	
1	D	407	

The following table lists non-polymeric compounds that are outliers for geometric or electron-density-fit criteria:

Mol	Type	Chain	Res	Geometry	Electron density
3	K2B	D	1404	-	X

2 Entry composition

There are 5 unique types of molecules in this entry. The entry contains 14507 atoms, of which 0 are hydrogen and 0 are deuterium.

In the tables below, the ZeroOcc column contains the number of atoms modelled with zero occupancy, the AltConf column contains the number of residues with at least one atom in alternate conformation and the Trace column contains the number of residues modelled with at most 2 atoms.

- Molecule 1 is a protein called P450 HEME-THIOLATE PROTEIN.

Mol	Chain	Residues	Atoms					ZeroOcc	AltConf	Trace
1	A	396	Total	C	N	O	S	0	2	0
			3084	1934	544	583	23			
1	B	395	Total	C	N	O	S	0	8	0
			3146	1964	563	595	24			
1	C	395	Total	C	N	O	S	0	1	0
			3092	1937	548	584	23			
1	D	394	Total	C	N	O	S	0	2	0
			3107	1943	551	590	23			

There are 36 discrepancies between the modelled and reference sequences:

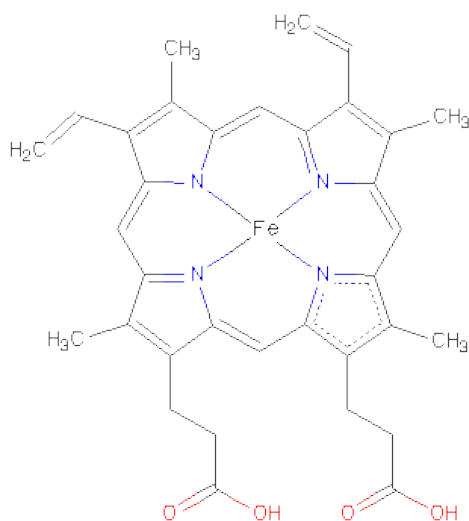
Chain	Residue	Modelled	Actual	Comment	Reference
A	1	MET	-	EXPRESSION TAG	UNP A0R4Q6
A	2	THR	-	EXPRESSION TAG	UNP A0R4Q6
A	3	GLN	-	EXPRESSION TAG	UNP A0R4Q6
A	402	HIS	-	EXPRESSION TAG	UNP A0R4Q6
A	403	HIS	-	EXPRESSION TAG	UNP A0R4Q6
A	404	HIS	-	EXPRESSION TAG	UNP A0R4Q6
A	405	HIS	-	EXPRESSION TAG	UNP A0R4Q6
A	406	HIS	-	EXPRESSION TAG	UNP A0R4Q6
A	407	HIS	-	EXPRESSION TAG	UNP A0R4Q6
B	1	MET	-	EXPRESSION TAG	UNP A0R4Q6
B	2	THR	-	EXPRESSION TAG	UNP A0R4Q6
B	3	GLN	-	EXPRESSION TAG	UNP A0R4Q6
B	402	HIS	-	EXPRESSION TAG	UNP A0R4Q6
B	403	HIS	-	EXPRESSION TAG	UNP A0R4Q6
B	404	HIS	-	EXPRESSION TAG	UNP A0R4Q6
B	405	HIS	-	EXPRESSION TAG	UNP A0R4Q6
B	406	HIS	-	EXPRESSION TAG	UNP A0R4Q6
B	407	HIS	-	EXPRESSION TAG	UNP A0R4Q6
C	1	MET	-	EXPRESSION TAG	UNP A0R4Q6
C	2	THR	-	EXPRESSION TAG	UNP A0R4Q6
C	3	GLN	-	EXPRESSION TAG	UNP A0R4Q6

Continued on next page...

Continued from previous page...

Chain	Residue	Modelled	Actual	Comment	Reference
C	402	HIS	-	EXPRESSION TAG	UNP A0R4Q6
C	403	HIS	-	EXPRESSION TAG	UNP A0R4Q6
C	404	HIS	-	EXPRESSION TAG	UNP A0R4Q6
C	405	HIS	-	EXPRESSION TAG	UNP A0R4Q6
C	406	HIS	-	EXPRESSION TAG	UNP A0R4Q6
C	407	HIS	-	EXPRESSION TAG	UNP A0R4Q6
D	1	MET	-	EXPRESSION TAG	UNP A0R4Q6
D	2	THR	-	EXPRESSION TAG	UNP A0R4Q6
D	3	GLN	-	EXPRESSION TAG	UNP A0R4Q6
D	402	HIS	-	EXPRESSION TAG	UNP A0R4Q6
D	403	HIS	-	EXPRESSION TAG	UNP A0R4Q6
D	404	HIS	-	EXPRESSION TAG	UNP A0R4Q6
D	405	HIS	-	EXPRESSION TAG	UNP A0R4Q6
D	406	HIS	-	EXPRESSION TAG	UNP A0R4Q6
D	407	HIS	-	EXPRESSION TAG	UNP A0R4Q6

- Molecule 2 is PROTOPORPHYRIN IX CONTAINING FE (three-letter code: HEM) (formula: $C_{34}H_{32}FeN_4O_4$).



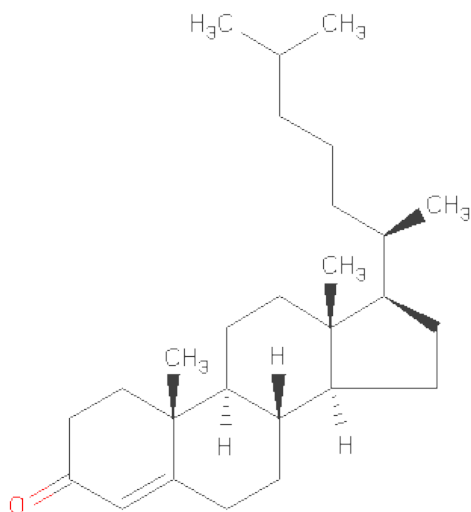
Mol	Chain	Residues	Atoms					ZeroOcc	AltConf
2	A	1	Total 43	C 34	Fe 1	N 4	O 4	0	0
2	B	1	Total 43	C 34	Fe 1	N 4	O 4	0	0
2	C	1	Total 43	C 34	Fe 1	N 4	O 4	0	0

Continued on next page...

Continued from previous page...

Mol	Chain	Residues	Atoms				ZeroOcc	AltConf	
2	D	1	Total	C	Fe	N	O	0	0
			43	34	1	4	4		

- Molecule 3 is (8ALPHA,9BETA)-CHOLEST-4-EN-3-ONE (three-letter code: K2B) (formula: C₂₇H₄₄O).



Mol	Chain	Residues	Atoms			ZeroOcc	AltConf
3	A	1	Total	C	O	0	0
			28	27	1		
3	B	1	Total	C	O	0	0
			28	27	1		
3	C	1	Total	C	O	0	0
			28	27	1		
3	D	1	Total	C	O	0	0
			28	27	1		

- Molecule 4 is MAGNESIUM ION (three-letter code: MG) (formula: Mg).

Mol	Chain	Residues	Atoms		ZeroOcc	AltConf
4	B	1	Total	Mg	0	0
			1	1		

- Molecule 5 is water.

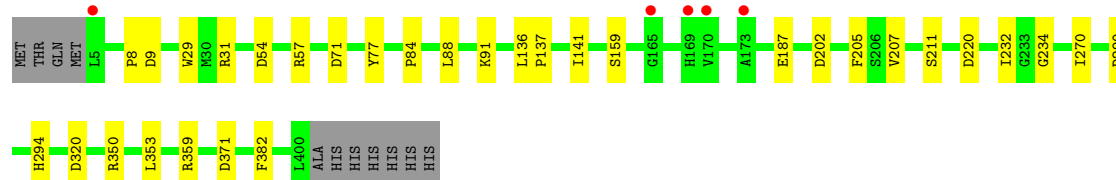
Mol	Chain	Residues	Atoms		ZeroOcc	AltConf
5	A	417	Total 417	O 417	0	0
5	B	459	Total 459	O 459	0	0
5	C	495	Total 495	O 495	0	0
5	D	422	Total 422	O 422	0	0

3 Residue-property plots

These plots are drawn for all protein, RNA and DNA chains in the entry. The first graphic for a chain summarises the proportions of errors displayed in the second graphic. The second graphic shows the sequence view annotated by issues in geometry and electron density. Residues are color-coded according to the number of geometric quality criteria for which they contain at least one outlier: green = 0, yellow = 1, orange = 2 and red = 3 or more. A red dot above a residue indicates a poor fit to the electron density ($RSRZ > 2$). Stretches of 2 or more consecutive residues without any outlier are shown as a green connector. Residues present in the sample, but not in the model, are shown in grey.

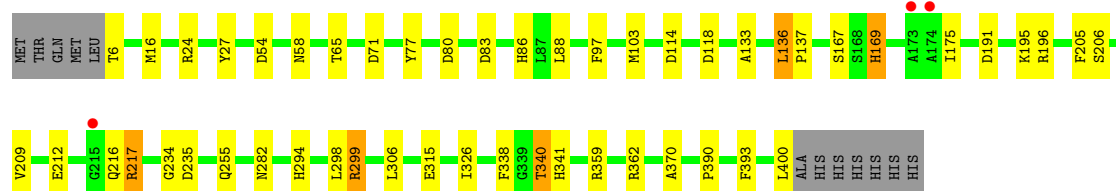
• Molecule 1: P450 HEME-THIOLATE PROTEIN

Chain A: 



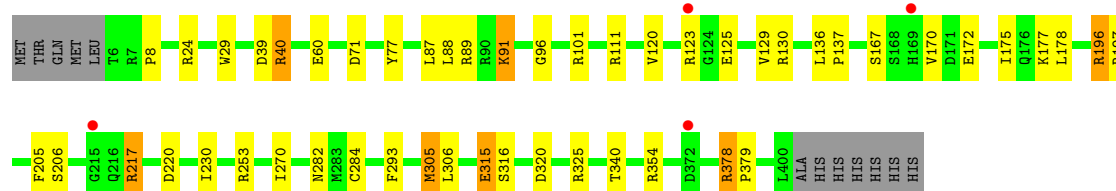
• Molecule 1: P450 HEME-THIOLATE PROTEIN

Chain B: 



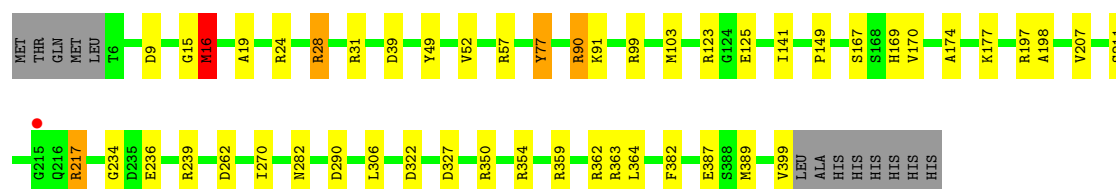
• Molecule 1: P450 HEME-THIOLATE PROTEIN

Chain C: 



• Molecule 1: P450 HEME-THIOLATE PROTEIN

Chain D: 



4 Data and refinement statistics

Property	Value	Source
Space group	P 1 21 1	Depositor
Cell constants a, b, c, α , β , γ	56.68Å 106.21Å 126.54Å 90.00° 90.67° 90.00°	Depositor
Resolution (Å)	126.53 – 1.69 81.35 – 1.69	Depositor EDS
% Data completeness (in resolution range)	93.3 (126.53-1.69) 93.3 (81.35-1.69)	Depositor EDS
R_{merge}	0.09	Depositor
R_{sym}	(Not available)	Depositor
$\langle I/\sigma(I) \rangle$ ¹	1.61 (at 1.69Å)	Xtriage
Refinement program	REFMAC 5.5.0109	Depositor
R, R_{free}	0.165 , 0.219 0.165 , 0.219	Depositor DCC
R_{free} test set	7821 reflections (5.27%)	DCC
Wilson B-factor (Å ²)	14.4	Xtriage
Anisotropy	0.211	Xtriage
Bulk solvent k_{sol} (e/Å ³), B_{sol} (Å ²)	0.38 , 32.3	EDS
Estimated twinning fraction	0.087 for h,-k,-l	Xtriage
L-test for twinning	$\langle L \rangle = 0.49$, $\langle L^2 \rangle = 0.32$	Xtriage
Outliers	0 of 156096 reflections	Xtriage
F_o, F_c correlation	0.96	EDS
Total number of atoms	14507	wwPDB-VP
Average B, all atoms (Å ²)	16.0	wwPDB-VP

Xtriage's analysis on translational NCS is as follows: *The largest off-origin peak in the Patterson function is 3.56% of the height of the origin peak. No significant pseudotranslation is detected.*

¹Intensities estimated from amplitudes.

5 Model quality

5.1 Standard geometry

Bond lengths and bond angles in the following residue types are not validated in this section: K2B, HEM, MG

The Z score for a bond length (or angle) is the number of standard deviations the observed value is removed from the expected value. A bond length (or angle) with $|Z| > 5$ is considered an outlier worth inspection. RMSZ is the root-mean-square of all Z scores of the bond lengths (or angles).

Mol	Chain	Bond lengths		Bond angles	
		RMSZ	$\# Z > 5$	RMSZ	$\# Z > 5$
1	A	1.10	2/3144 (0.1%)	1.01	8/4267 (0.2%)
1	B	1.21	3/3207 (0.1%)	1.05	8/4347 (0.2%)
1	C	1.12	3/3153 (0.1%)	1.03	15/4277 (0.4%)
1	D	1.13	6/3168 (0.2%)	1.04	16/4295 (0.4%)
All	All	1.14	14/12672 (0.1%)	1.04	47/17186 (0.3%)

All (14) bond length outliers are listed below:

Mol	Chain	Res	Type	Atoms	Z	Observed(Å)	Ideal(Å)
1	C	315	GLU	CG-CD	8.25	1.64	1.51
1	B	27	TYR	CD1-CE1	7.20	1.50	1.39
1	D	198	ALA	CA-CB	6.53	1.66	1.52
1	C	293	PHE	CD2-CE2	6.11	1.51	1.39
1	D	77	TYR	CD1-CE1	5.99	1.48	1.39
1	B	133	ALA	CA-CB	5.73	1.64	1.52
1	D	49	TYR	CD2-CE2	5.71	1.48	1.39
1	B	393	PHE	CE1-CZ	5.43	1.47	1.37
1	D	52	VAL	CB-CG1	5.40	1.64	1.52
1	D	382	PHE	CE2-CZ	5.37	1.47	1.37
1	D	387	GLU	CG-CD	5.35	1.59	1.51
1	A	31	ARG	CG-CD	5.23	1.65	1.51
1	A	382	PHE	CE2-CZ	5.20	1.47	1.37
1	C	60	GLU	CG-CD	5.09	1.59	1.51

All (47) bond angle outliers are listed below:

Mol	Chain	Res	Type	Atoms	Z	Observed(°)	Ideal(°)
1	B	71	ASP	CB-CG-OD1	10.99	128.19	118.30
1	A	71[A]	ASP	CB-CG-OD1	9.44	126.80	118.30
1	A	71[B]	ASP	CB-CG-OD1	9.44	126.80	118.30

Continued on next page...

Continued from previous page...

Mol	Chain	Res	Type	Atoms	Z	Observed(°)	Ideal(°)
1	D	16	MET	CG-SD-CE	8.69	114.10	100.20
1	B	359	ARG	NE-CZ-NH2	-8.10	116.25	120.30
1	D	31	ARG	NE-CZ-NH2	-7.91	116.35	120.30
1	B	24	ARG	NE-CZ-NH1	-7.88	116.36	120.30
1	C	24	ARG	NE-CZ-NH1	-7.33	116.64	120.30
1	C	40	ARG	NE-CZ-NH1	7.16	123.88	120.30
1	C	71	ASP	CB-CG-OD1	6.98	124.58	118.30
1	A	290	ASP	CB-CG-OD1	6.75	124.37	118.30
1	D	24	ARG	NE-CZ-NH2	-6.72	116.94	120.30
1	D	197	ARG	NE-CZ-NH1	6.65	123.63	120.30
1	C	320	ASP	CB-CG-OD1	6.59	124.23	118.30
1	C	39	ASP	CB-CG-OD1	6.50	124.15	118.30
1	B	118	ASP	CB-CG-OD1	6.35	124.02	118.30
1	C	320	ASP	CB-CG-OD2	-6.31	112.62	118.30
1	C	91	LYS	CD-CE-NZ	-6.29	97.23	111.70
1	D	31	ARG	NE-CZ-NH1	6.29	123.44	120.30
1	C	89	ARG	NE-CZ-NH1	-6.14	117.23	120.30
1	A	220	ASP	CB-CG-OD2	-6.13	112.78	118.30
1	A	320	ASP	CB-CG-OD1	5.98	123.68	118.30
1	D	39	ASP	CB-CG-OD1	5.88	123.59	118.30
1	D	197	ARG	NE-CZ-NH2	-5.86	117.37	120.30
1	B	235	ASP	CB-CG-OD1	5.85	123.56	118.30
1	C	40	ARG	NE-CZ-NH2	-5.85	117.38	120.30
1	D	90	ARG	NE-CZ-NH1	5.83	123.21	120.30
1	B	118	ASP	CB-CG-OD2	-5.78	113.10	118.30
1	D	9	ASP	CB-CG-OD1	5.67	123.40	118.30
1	D	327	ASP	CB-CG-OD1	5.55	123.30	118.30
1	B	71	ASP	CB-CG-OD2	-5.50	113.35	118.30
1	C	315	GLU	OE1-CD-OE2	-5.49	116.71	123.30
1	C	220	ASP	CB-CG-OD2	-5.38	113.45	118.30
1	D	90	ARG	NE-CZ-NH2	-5.35	117.63	120.30
1	C	220	ASP	CB-CG-OD1	5.33	123.10	118.30
1	C	325	ARG	NE-CZ-NH1	5.33	122.97	120.30
1	C	196	ARG	NE-CZ-NH1	-5.31	117.64	120.30
1	D	350	ARG	NE-CZ-NH1	5.19	122.89	120.30
1	A	71[A]	ASP	CB-CG-OD2	-5.14	113.67	118.30
1	A	71[B]	ASP	CB-CG-OD2	-5.14	113.67	118.30
1	D	262	ASP	CB-CG-OD1	5.13	122.92	118.30
1	D	290	ASP	CB-CG-OD1	5.10	122.89	118.30
1	D	359	ARG	NE-CZ-NH1	5.09	122.84	120.30
1	C	197	ARG	NE-CZ-NH1	5.06	122.83	120.30
1	D	389	MET	CG-SD-CE	5.03	108.24	100.20

Continued on next page...

Continued from previous page...

Mol	Chain	Res	Type	Atoms	Z	Observed(°)	Ideal(°)
1	B	136	LEU	CB-CG-CD2	5.02	119.53	111.00
1	A	350	ARG	NE-CZ-NH2	-5.01	117.80	120.30

There are no chirality outliers.

There are no planarity outliers.

5.2 Close contacts ⓘ

In the following table, the Non-H and H(model) columns list the number of non-hydrogen atoms and hydrogen atoms in the chain respectively. The H(added) column lists the number of hydrogens added by MolProbity. The Clashes column lists the number of clashes within the asymmetric unit, and the number in parentheses is this value normalized per 1000 atoms of the molecule in the chain. The Symm-Clashes column gives symmetry related clashes, in the same way as for the Clashes column.

Mol	Chain	Non-H	H(model)	H(added)	Clashes	Symm-Clashes
1	A	3084	0	3011	21	0
1	B	3146	0	3071	52	1
1	C	3092	0	3035	48	0
1	D	3107	0	3051	31	0
2	A	43	0	30	7	0
2	B	43	0	30	7	0
2	C	43	0	30	4	0
2	D	43	0	30	8	0
3	A	28	0	44	0	0
3	B	28	0	44	0	0
3	C	28	0	44	0	0
3	D	28	0	44	0	0
4	B	1	0	0	0	0
5	A	417	0	0	4	0
5	B	459	0	0	19	2
5	C	495	0	0	14	0
5	D	422	0	0	7	0
All	All	14507	0	12464	155	2

Clashscore is defined as the number of clashes calculated for the entry per 1000 atoms (including hydrogens) of the entry. The overall clashscore for this entry is 6.

All (155) close contacts within the same asymmetric unit are listed below.

Atom-1	Atom-2	Distance(Å)	Clash(Å)
1:B:6:THR:HA	5:B:2001:HOH:O	1.40	1.18

Continued on next page...

Continued from previous page...

Atom-1	Atom-2	Distance(Å)	Clash(Å)
1:C:305:MET:SD	5:C:2022:HOH:O	2.01	1.14
1:B:299[A]:ARG:HD2	1:B:299[A]:ARG:N	1.75	0.99
1:C:217:ARG:HG3	1:C:217:ARG:HH11	1.21	0.99
1:C:123[B]:ARG:HH11	1:C:123[B]:ARG:CB	1.81	0.92
1:B:196[B]:ARG:HA	1:B:196[B]:ARG:HE	1.36	0.89
1:A:141:ILE:CD1	2:A:1402:HEM:HBC1	2.04	0.88
1:D:362:ARG:NH2	5:D:2197:HOH:O	2.05	0.88
1:C:123[B]:ARG:HB3	1:C:123[B]:ARG:HH11	1.41	0.86
1:D:28:ARG:NH2	5:D:2054:HOH:O	2.08	0.86
1:B:196[B]:ARG:CA	1:B:196[B]:ARG:HE	1.91	0.83
1:C:282:ASN:HB2	1:C:305:MET:HE2	1.59	0.83
1:B:212:GLU:O	5:B:2315:HOH:O	1.98	0.82
1:C:123[A]:ARG:HH11	1:C:123[A]:ARG:HG3	1.43	0.82
1:B:340:THR:HB	5:B:2154:HOH:O	1.80	0.80
1:D:167:SER:OG	1:D:169:HIS:HD2	1.64	0.80
1:B:167:SER:OG	1:B:169:HIS:HD2	1.65	0.79
1:A:141:ILE:HD13	2:A:1402:HEM:HBC1	1.62	0.79
1:D:91:LYS:HD3	5:D:2164:HOH:O	1.82	0.79
1:B:86:HIS:HE1	2:B:1402:HEM:O2D	1.68	0.77
1:B:196[B]:ARG:HA	1:B:196[B]:ARG:NE	1.99	0.76
1:D:16:MET:HE3	1:D:19:ALA:HB3	1.67	0.76
1:D:141:ILE:HD13	2:D:1402:HEM:HBC1	1.68	0.75
1:C:217:ARG:NH1	1:C:217:ARG:HG3	1.93	0.75
1:C:217:ARG:CG	1:C:217:ARG:HH11	1.99	0.74
1:C:315:GLU:HG2	5:C:2056:HOH:O	1.87	0.74
5:A:2359:HOH:O	1:B:103:MET:HG3	1.85	0.74
1:A:54:ASP:OD1	1:A:57[A]:ARG:NH2	2.20	0.74
1:A:141:ILE:HD13	2:A:1402:HEM:CBC	2.19	0.73
2:C:1402:HEM:HHD	2:C:1402:HEM:HBC2	1.71	0.73
1:B:341:HIS:HD2	2:B:1402:HEM:O1D	1.72	0.72
1:B:114:ASP:OD1	5:B:2202:HOH:O	2.06	0.72
1:B:97:PHE:CE1	2:B:1402:HEM:CBC	2.72	0.71
1:B:167:SER:OG	1:B:169:HIS:CD2	2.42	0.71
1:C:111:ARG:HB3	5:C:2238:HOH:O	1.92	0.70
1:D:141:ILE:CD1	2:D:1402:HEM:HBC1	2.21	0.70
1:A:141:ILE:HD11	2:A:1402:HEM:HBC1	1.75	0.67
1:B:175:ILE:HG23	5:B:2277:HOH:O	1.94	0.67
1:D:141:ILE:HD13	2:D:1402:HEM:CBC	2.25	0.66
1:D:167:SER:OG	1:D:169:HIS:CD2	2.48	0.66
1:B:400:LEU:CB	5:B:2212:HOH:O	2.43	0.66
1:B:6:THR:N	5:B:2003:HOH:O	2.29	0.64
1:D:270:ILE:HD11	1:D:354:ARG:HA	1.80	0.64

Continued on next page...

Continued from previous page...

Atom-1	Atom-2	Distance(Å)	Clash(Å)
1:D:217:ARG:CG	1:D:217:ARG:HH11	2.11	0.63
1:B:340:THR:HG21	5:B:2155:HOH:O	1.97	0.62
1:A:187:GLU:CG	5:A:2269:HOH:O	2.47	0.62
1:C:123[A]:ARG:NH1	1:C:123[A]:ARG:HG3	2.14	0.61
1:B:97:PHE:CE1	2:B:1402:HEM:HBC2	2.35	0.61
1:A:84:PRO:O	1:A:88:LEU:HD13	2.00	0.61
1:C:340:THR:HG22	5:C:2450:HOH:O	2.01	0.61
5:C:2449:HOH:O	1:D:57:ARG:HD2	2.00	0.60
1:C:378:ARG:HD3	1:C:379:PRO:HD2	1.83	0.60
1:C:378:ARG:CG	1:C:378:ARG:HH11	2.14	0.60
1:B:299[A]:ARG:N	1:B:299[A]:ARG:CD	2.52	0.60
1:C:96:GLY:HA2	1:C:101:ARG:HG2	1.84	0.59
1:B:196[A]:ARG:HD2	1:B:206:SER:HB2	1.84	0.59
1:B:83:ASP:OD1	1:B:86:HIS:HD2	1.85	0.59
1:C:136:LEU:HB3	1:C:137:PRO:HD3	1.85	0.59
1:B:299[A]:ARG:HD2	1:B:299[A]:ARG:H	1.65	0.57
1:D:177:LYS:HE2	5:D:2261:HOH:O	2.04	0.57
1:B:97:PHE:HE1	2:B:1402:HEM:CBC	2.16	0.57
1:C:284:CYS:SG	1:C:305:MET:CE	2.92	0.57
1:B:136:LEU:HB3	1:B:137:PRO:HD3	1.88	0.56
1:B:298:LEU:C	1:B:299[A]:ARG:HD2	2.26	0.56
1:C:270:ILE:HD11	1:C:354:ARG:HA	1.87	0.56
1:D:28:ARG:CZ	5:D:2054:HOH:O	2.50	0.56
1:B:340:THR:HG23	5:B:2107:HOH:O	2.05	0.56
1:B:338:PHE:HZ	5:B:2111:HOH:O	1.89	0.56
1:B:54:ASP:OD2	1:B:294:HIS:HE1	1.88	0.56
1:A:234:GLY:HA2	2:A:1402:HEM:HMC3	1.88	0.55
1:C:378:ARG:HG2	1:C:378:ARG:HH11	1.71	0.55
2:C:1402:HEM:HBB2	2:C:1402:HEM:HMB2	1.88	0.55
1:B:299[A]:ARG:NH1	5:B:2382:HOH:O	2.38	0.54
1:B:196[B]:ARG:HE	1:B:196[B]:ARG:N	2.05	0.54
1:B:6:THR:HA	5:B:2003:HOH:O	2.06	0.54
1:C:123[B]:ARG:HB3	1:C:123[B]:ARG:NH1	2.18	0.54
1:C:378:ARG:HD3	1:C:379:PRO:CD	2.38	0.54
1:A:207:VAL:O	1:A:211:SER:HB3	2.07	0.53
1:B:282:ASN:HA	1:B:306:LEU:O	2.08	0.53
1:C:284:CYS:SG	1:C:305:MET:HE3	2.49	0.53
1:B:255:GLN:HE21	1:B:326:ILE:HG23	1.74	0.52
1:B:362:ARG:CZ	5:B:2425:HOH:O	2.58	0.52
1:A:9:ASP:CG	1:C:130:ARG:HD2	2.31	0.51
1:C:178:LEU:HD23	1:C:178:LEU:C	2.31	0.51
1:A:234:GLY:HA2	2:A:1402:HEM:HBC2	1.93	0.51

Continued on next page...

Continued from previous page...

Atom-1	Atom-2	Distance(Å)	Clash(Å)
1:C:88:LEU:HD23	5:C:2072:HOH:O	2.10	0.51
1:A:234:GLY:CA	2:A:1402:HEM:HBC2	2.41	0.51
1:B:255:GLN:NE2	1:B:326:ILE:H	2.08	0.51
1:C:378:ARG:HD3	1:C:379:PRO:N	2.26	0.51
1:C:123[B]:ARG:HH11	1:C:123[B]:ARG:CG	2.24	0.50
1:B:196[A]:ARG:HD2	1:B:206:SER:CB	2.41	0.50
1:A:136:LEU:HB3	1:A:137:PRO:HD3	1.93	0.50
1:B:315:GLU:HG3	5:B:2061:HOH:O	2.12	0.49
1:B:97:PHE:CE1	2:B:1402:HEM:HBC1	2.45	0.49
1:C:340:THR:HB	5:C:2450:HOH:O	2.12	0.49
1:C:172:GLU:HA	1:C:175:ILE:HG22	1.95	0.49
2:C:1402:HEM:HBB2	2:C:1402:HEM:CMB	2.43	0.49
1:B:6:THR:CA	5:B:2003:HOH:O	2.61	0.48
1:B:341:HIS:HE1	5:B:2149:HOH:O	1.94	0.48
1:C:120:VAL:O	1:C:123[A]:ARG:HB3	2.14	0.48
1:C:123[A]:ARG:NH1	1:C:123[A]:ARG:CG	2.76	0.48
1:C:340:THR:CB	5:C:2450:HOH:O	2.61	0.48
1:A:54:ASP:OD2	1:A:294:HIS:HE1	1.97	0.48
1:C:172:GLU:O	1:C:175:ILE:HG22	2.14	0.48
1:C:196:ARG:HD2	1:C:206:SER:HB2	1.95	0.48
1:C:167:SER:HB3	1:C:170:VAL:HG13	1.96	0.47
1:C:123[A]:ARG:NH2	1:C:125:GLU:OE2	2.47	0.47
1:A:57[B]:ARG:NH1	5:A:2104:HOH:O	2.34	0.47
1:A:270:ILE:HD12	1:A:353:LEU:HB3	1.95	0.47
1:D:90:ARG:NH2	5:D:2159:HOH:O	2.47	0.47
1:C:378:ARG:HB2	1:C:378:ARG:HH11	1.80	0.47
1:A:91:LYS:NZ	1:B:58:ASN:ND2	2.63	0.47
1:B:65:THR:HA	1:B:80:ASP:O	2.15	0.47
1:C:87:LEU:O	1:C:91:LYS:HG2	2.16	0.46
1:D:28:ARG:NE	5:D:2054:HOH:O	2.48	0.46
1:C:230:ILE:HG23	2:C:1402:HEM:HBC1	1.97	0.46
1:D:234:GLY:HA2	2:D:1402:HEM:HMC2	1.98	0.45
1:B:205:PHE:O	1:B:209:VAL:HG23	2.15	0.45
2:D:1402:HEM:HMB2	2:D:1402:HEM:HBB2	1.98	0.45
1:B:83:ASP:OD1	1:B:86:HIS:CD2	2.67	0.45
1:C:40:ARG:HD2	5:C:2099:HOH:O	2.15	0.45
1:B:338:PHE:CZ	5:B:2111:HOH:O	2.56	0.45
1:D:207:VAL:O	1:D:211:SER:HB3	2.15	0.45
1:B:370:ALA:HB3	1:B:390:PRO:HB2	1.98	0.45
1:D:217:ARG:HG3	1:D:217:ARG:HH11	1.82	0.45
1:C:340:THR:CG2	5:C:2450:HOH:O	2.60	0.44
1:C:217:ARG:HD2	5:C:2166:HOH:O	2.17	0.44

Continued on next page...

Continued from previous page...

Atom-1	Atom-2	Distance(Å)	Clash(Å)
1:D:236:GLU:HA	1:D:239:ARG:HD3	1.99	0.44
1:C:316:SER:O	1:D:99:ARG:HD3	2.16	0.44
1:D:28:ARG:NH1	1:D:322:ASP:OD2	2.41	0.43
1:B:299[B]:ARG:NH1	5:B:2383:HOH:O	2.39	0.43
1:A:159:SER:HB3	1:A:232:ILE:HD13	2.00	0.43
1:C:282:ASN:HA	1:C:306:LEU:O	2.18	0.43
1:D:217:ARG:NH1	1:D:217:ARG:CG	2.76	0.43
1:D:282:ASN:HA	1:D:306:LEU:O	2.19	0.43
1:C:378:ARG:CB	1:C:378:ARG:HH11	2.32	0.42
1:B:234:GLY:HA2	2:B:1402:HEM:HMC2	2.01	0.42
1:C:8:PRO:HD3	1:C:29:TRP:CD2	2.54	0.42
1:A:202:ASP:OD1	1:A:202:ASP:C	2.58	0.42
1:A:8:PRO:HD3	1:A:29:TRP:CD2	2.55	0.42
1:D:141:ILE:HD11	2:D:1402:HEM:HBC1	1.99	0.41
2:D:1402:HEM:HBC2	2:D:1402:HEM:HMC2	2.02	0.41
1:B:212:GLU:HB2	1:B:216[B]:GLN:O	2.20	0.41
1:B:217:ARG:HD3	5:B:2130:HOH:O	2.21	0.41
5:C:2211:HOH:O	1:D:57:ARG:NH1	2.53	0.41
1:D:170:VAL:HB	1:D:174:ALA:HB3	2.02	0.41
1:D:15:GLY:H	1:D:167:SER:HG	1.69	0.41
1:D:363:ARG:O	1:D:364:LEU:HD23	2.21	0.41
2:D:1402:HEM:CMB	2:D:1402:HEM:HBB2	2.51	0.41
1:A:359:ARG:NH2	5:A:2190:HOH:O	2.47	0.40
1:D:123[A]:ARG:HG3	1:D:125:GLU:HG2	2.02	0.40
5:C:2419:HOH:O	1:D:103:MET:HG3	2.21	0.40
1:C:129:VAL:HG13	5:C:2349:HOH:O	2.21	0.40
1:C:305:MET:HE3	1:C:305:MET:HA	2.04	0.40
1:B:191:ASP:O	1:B:195:LYS:HG3	2.21	0.40

All (2) symmetry-related close contacts are listed below. The label for Atom-2 includes the symmetry operator and encoded unit-cell translations to be applied.

Atom-1	Atom-2	Distance(Å)	Clash(Å)
5:B:2373:HOH:O	5:B:2454:HOH:O[2_645]	1.91	0.29
1:B:362:ARG:NH1	5:B:2375:HOH:O[2_655]	2.17	0.03

5.3 Torsion angles

5.3.1 Protein backbone ⓘ

In the following table, the Percentiles column shows the percent Ramachandran outliers of the chain as a percentile score with respect to all X-ray entries followed by that with respect to entries

of similar resolution. The Analysed column shows the number of residues for which the backbone conformation was analysed, and the total number of residues.

Mol	Chain	Analysed	Favoured	Allowed	Outliers	Percentiles	
1	A	396/407 (97%)	386 (98%)	10 (2%)	0	100	100
1	B	401/407 (98%)	392 (98%)	9 (2%)	0	100	100
1	C	394/407 (97%)	380 (96%)	14 (4%)	0	100	100
1	D	394/407 (97%)	385 (98%)	9 (2%)	0	100	100
All	All	1585/1628 (97%)	1543 (97%)	42 (3%)	0	100	100

There are no Ramachandran outliers to report.

5.3.2 Protein sidechains ⓘ

In the following table, the Percentiles column shows the percent sidechain outliers of the chain as a percentile score with respect to all X-ray entries followed by that with respect to entries of similar resolution. The Analysed column shows the number of residues for which the sidechain conformation was analysed, and the total number of residues.

Mol	Chain	Analysed	Rotameric	Outliers	Percentiles	
1	A	329/349 (94%)	326 (99%)	3 (1%)	87	79
1	B	339/349 (97%)	330 (97%)	9 (3%)	57	33
1	C	334/349 (96%)	327 (98%)	7 (2%)	66	45
1	D	338/349 (97%)	332 (98%)	6 (2%)	71	53
All	All	1340/1396 (96%)	1315 (98%)	25 (2%)	73	50

All (25) residues with a non-rotameric sidechain are listed below:

Mol	Chain	Res	Type
1	A	77	TYR
1	A	205	PHE
1	A	371	ASP
1	B	16[A]	MET
1	B	16[B]	MET
1	B	77	TYR
1	B	88	LEU
1	B	169	HIS
1	B	217	ARG
1	B	299[A]	ARG
1	B	299[B]	ARG

Continued on next page...

Continued from previous page...

Mol	Chain	Res	Type
1	B	340	THR
1	C	77	TYR
1	C	177	LYS
1	C	205	PHE
1	C	217	ARG
1	C	253	ARG
1	C	305	MET
1	C	378	ARG
1	D	16	MET
1	D	28	ARG
1	D	77	TYR
1	D	149	PRO
1	D	217	ARG
1	D	399	VAL

Some sidechains can be flipped to improve hydrogen bonding and reduce clashes. All (16) such sidechains are listed below:

Mol	Chain	Res	Type
1	A	210	ASN
1	A	294	HIS
1	A	323	ASN
1	B	58	ASN
1	B	86	HIS
1	B	169	HIS
1	B	210	ASN
1	B	255	GLN
1	B	294	HIS
1	B	341	HIS
1	C	210	ASN
1	C	323	ASN
1	D	169	HIS
1	D	210	ASN
1	D	323	ASN
1	D	347	GLN

5.3.3 RNA ⓘ

There are no RNA chains in this entry.

5.4 Non-standard residues in protein, DNA, RNA chains ⓘ

There are no non-standard protein/DNA/RNA residues in this entry.

5.5 Carbohydrates ⓘ

There are no carbohydrates in this entry.

5.6 Ligand geometry ⓘ

Of 9 ligands modelled in this entry, 1 is monoatomic - leaving 8 for Mogul analysis.

In the following table, the Counts columns list the number of bonds (or angles) for which Mogul statistics could be retrieved, the number of bonds (or angles) that are observed in the model and the number of bonds (or angles) that are defined in the chemical component dictionary. The Link column lists molecule types, if any, to which the group is linked. The Z score for a bond length (or angle) is the number of standard deviations the observed value is removed from the expected value. A bond length (or angle) with $|Z| > 2$ is considered an outlier worth inspection. RMSZ is the root-mean-square of all Z scores of the bond lengths (or angles).

Mol	Type	Chain	Res	Link	Bond lengths			Bond angles		
					Counts	RMSZ	# $ Z > 2$	Counts	RMSZ	# $ Z > 2$
2	HEM	A	1402	1	49,50,50	3.41	19 (38%)	46,82,82	2.82	13 (28%)
3	K2B	A	1404	-	31,31,31	0.84	0	48,48,48	1.55	11 (22%)
2	HEM	B	1402	1	49,50,50	2.46	18 (36%)	46,82,82	2.39	11 (23%)
3	K2B	B	1404	-	31,31,31	1.00	2 (6%)	48,48,48	1.52	6 (12%)
2	HEM	C	1402	1	49,50,50	2.26	18 (36%)	46,82,82	2.21	15 (32%)
3	K2B	C	1404	-	31,31,31	1.03	2 (6%)	48,48,48	1.55	13 (27%)
2	HEM	D	1402	1	49,50,50	2.95	20 (40%)	46,82,82	2.55	14 (30%)
3	K2B	D	1404	-	31,31,31	0.83	0	48,48,48	1.44	7 (14%)

In the following table, the Chirals column lists the number of chiral outliers, the number of chiral centers analysed, the number of these observed in the model and the number defined in the chemical component dictionary. Similar counts are reported in the Torsion and Rings columns. '-' means no outliers of that kind were identified.

Mol	Type	Chain	Res	Link	Chirals	Torsions	Rings
2	HEM	A	1402	1	-	0/14/114/114	0/0/8/8
3	K2B	A	1404	-	-	0/10/68/68	0/0/4/4
2	HEM	B	1402	1	-	0/14/114/114	0/0/8/8
3	K2B	B	1404	-	-	0/10/68/68	0/0/4/4
2	HEM	C	1402	1	-	0/14/114/114	0/0/8/8

Continued on next page...

Continued from previous page...

Mol	Type	Chain	Res	Link	Chirals	Torsions	Rings
3	K2B	C	1404	-	-	0/10/68/68	0/0/4/4
2	HEM	D	1402	1	-	0/14/114/114	0/0/8/8
3	K2B	D	1404	-	-	0/10/68/68	0/0/4/4

All (79) bond length outliers are listed below:

Mol	Chain	Res	Type	Atoms	Z	Observed(Å)	Ideal(Å)
2	A	1402	HEM	C3D-C4D	12.07	1.47	1.44
2	D	1402	HEM	C2D-C1D	-10.95	1.41	1.44
2	A	1402	HEM	C2D-C1D	-10.66	1.41	1.44
2	A	1402	HEM	C4A-C3A	7.47	1.49	1.40
2	B	1402	HEM	C2D-C1D	7.25	1.46	1.44
2	D	1402	HEM	C3D-C4D	-6.27	1.43	1.44
2	C	1402	HEM	C3C-C2C	-6.22	1.32	1.43
2	D	1402	HEM	C3C-CAC	5.73	1.58	1.40
2	C	1402	HEM	FE-NC	4.97	2.16	1.97
2	B	1402	HEM	C4A-C3A	4.89	1.46	1.40
2	D	1402	HEM	CHB-C1B	4.80	1.42	1.35
2	A	1402	HEM	C2B-C1B	-4.71	1.43	1.44
2	B	1402	HEM	C3B-CAB	4.66	1.55	1.40
2	B	1402	HEM	C3C-CAC	4.65	1.55	1.40
2	A	1402	HEM	C3C-CAC	4.62	1.54	1.40
2	C	1402	HEM	C3C-CAC	4.62	1.54	1.40
2	C	1402	HEM	C3B-C2B	-4.60	1.35	1.43
2	A	1402	HEM	C3B-CAB	4.56	1.54	1.40
2	A	1402	HEM	CMB-C2B	4.55	1.61	1.47
2	D	1402	HEM	FE-NA	4.54	2.11	1.92
2	A	1402	HEM	FE-ND	4.51	2.14	1.97
2	A	1402	HEM	FE-NA	4.47	2.11	1.92
2	D	1402	HEM	C3D-C2D	4.33	1.51	1.43
2	C	1402	HEM	C3B-CAB	4.20	1.53	1.40
2	B	1402	HEM	FE-NC	4.20	2.13	1.97
2	D	1402	HEM	C3B-CAB	4.09	1.53	1.40
2	A	1402	HEM	C3C-C2C	-4.06	1.36	1.43
2	D	1402	HEM	C2B-C1B	-3.95	1.43	1.44
2	B	1402	HEM	C3C-C2C	-3.95	1.36	1.43
2	D	1402	HEM	C3C-C2C	-3.80	1.37	1.43
2	B	1402	HEM	CAA-C2A	3.75	1.58	1.52
2	D	1402	HEM	CMB-C2B	3.74	1.59	1.47
2	D	1402	HEM	FE-NB	3.73	2.11	1.97
2	D	1402	HEM	C3B-C2B	-3.53	1.37	1.43
2	B	1402	HEM	FE-NA	3.48	2.07	1.92

Continued on next page...

Continued from previous page...

Mol	Chain	Res	Type	Atoms	Z	Observed(Å)	Ideal(Å)
2	A	1402	HEM	FE-NC	3.47	2.10	1.97
2	A	1402	HEM	C3B-C2B	-3.39	1.37	1.43
2	B	1402	HEM	CMC-C2C	3.39	1.58	1.47
2	C	1402	HEM	C2B-C1B	3.33	1.45	1.44
2	A	1402	HEM	CHB-C1B	3.25	1.40	1.35
2	A	1402	HEM	FE-NB	3.23	2.09	1.97
2	C	1402	HEM	FE-NA	3.22	2.06	1.92
2	B	1402	HEM	CHB-C1B	3.19	1.40	1.35
2	D	1402	HEM	FE-ND	3.19	2.09	1.97
2	C	1402	HEM	CAA-C2A	3.13	1.57	1.52
2	A	1402	HEM	C3D-C2D	3.04	1.49	1.43
2	D	1402	HEM	C4A-C3A	3.03	1.44	1.40
2	C	1402	HEM	CHB-C1B	3.02	1.40	1.35
2	B	1402	HEM	C2B-C1B	3.02	1.45	1.44
2	D	1402	HEM	C3B-C4B	2.96	1.48	1.44
2	D	1402	HEM	FE-NC	2.94	2.08	1.97
2	B	1402	HEM	FE-ND	2.87	2.08	1.97
2	B	1402	HEM	CMD-C2D	2.85	1.56	1.47
2	B	1402	HEM	C3B-C2B	-2.81	1.38	1.43
2	C	1402	HEM	CMB-C2B	2.74	1.55	1.47
2	B	1402	HEM	CMB-C2B	2.73	1.55	1.47
2	C	1402	HEM	CMD-C2D	2.69	1.55	1.47
2	C	1402	HEM	C3D-C2D	2.64	1.48	1.43
2	C	1402	HEM	CHD-C4C	2.61	1.41	1.36
2	D	1402	HEM	C4C-NC	-2.59	1.34	1.38
2	A	1402	HEM	CMD-C2D	2.58	1.55	1.47
2	D	1402	HEM	CMC-C2C	2.57	1.55	1.47
2	C	1402	HEM	FE-ND	2.55	2.07	1.97
2	B	1402	HEM	C3D-C2D	2.55	1.48	1.43
2	B	1402	HEM	C4A-CHB	-2.53	1.32	1.39
2	C	1402	HEM	C4A-C3A	2.46	1.43	1.40
3	B	1404	K2B	C11-C9	2.37	1.58	1.53
2	A	1402	HEM	CMC-C2C	2.29	1.54	1.47
3	C	1404	K2B	C16-C17	2.28	1.59	1.54
2	C	1402	HEM	C4B-NB	2.26	1.43	1.37
2	C	1402	HEM	C1A-C2A	2.23	1.47	1.43
2	A	1402	HEM	CAD-CBD	2.22	1.58	1.52
2	C	1402	HEM	CMC-C2C	2.21	1.54	1.47
3	C	1404	K2B	C21-C20	2.18	1.58	1.53
2	A	1402	HEM	CHD-C4C	2.17	1.40	1.36
2	D	1402	HEM	C1A-C2A	2.16	1.47	1.43
2	D	1402	HEM	CMD-C2D	2.13	1.54	1.47

Continued on next page...

Continued from previous page...

Mol	Chain	Res	Type	Atoms	Z	Observed(Å)	Ideal(Å)
2	B	1402	HEM	CHC-C4B	2.05	1.44	1.39
3	B	1404	K2B	C16-C17	2.03	1.59	1.54

All (90) bond angle outliers are listed below:

Mol	Chain	Res	Type	Atoms	Z	Observed(°)	Ideal(°)
2	A	1402	HEM	C3B-C4B-NB	-12.52	105.05	114.00
2	D	1402	HEM	C3B-C4B-NB	-9.49	107.21	114.00
2	B	1402	HEM	C3B-C4B-NB	-8.95	107.60	114.00
2	C	1402	HEM	C3B-C4B-NB	-6.64	109.25	114.00
2	A	1402	HEM	CHD-C4C-NC	5.79	129.76	124.73
2	A	1402	HEM	C4C-NC-C1C	5.70	111.46	105.53
2	D	1402	HEM	C4C-NC-C1C	5.61	111.37	105.53
2	C	1402	HEM	C4C-NC-C1C	5.49	111.24	105.53
2	B	1402	HEM	CMA-C3A-C4A	-5.38	120.34	128.62
2	B	1402	HEM	CHD-C4C-NC	5.37	129.40	124.73
2	B	1402	HEM	C4C-NC-C1C	5.18	110.92	105.53
2	A	1402	HEM	CBD-CAD-C3D	-5.01	103.44	114.37
2	D	1402	HEM	CHD-C4C-NC	4.71	128.83	124.73
2	C	1402	HEM	CMA-C3A-C4A	-4.63	121.49	128.62
2	D	1402	HEM	CBD-CAD-C3D	-4.62	104.28	114.37
2	D	1402	HEM	C4D-ND-C1D	4.50	109.76	105.16
2	C	1402	HEM	C4D-ND-C1D	4.36	109.62	105.16
2	A	1402	HEM	C3A-C4A-NA	-4.14	106.28	109.41
2	A	1402	HEM	C1B-NB-C4B	4.08	109.33	105.16
2	B	1402	HEM	CMA-C3A-C2A	4.07	132.62	124.94
3	D	1404	K2B	C18-C13-C12	4.02	117.19	110.55
3	B	1404	K2B	C2-C3-C4	3.93	122.77	116.76
3	D	1404	K2B	C6-C5-C4	-3.92	116.01	120.93
2	C	1402	HEM	C2D-C1D-ND	-3.92	108.30	112.93
2	C	1402	HEM	CBA-CAA-C2A	-3.83	105.95	112.69
2	A	1402	HEM	C4D-ND-C1D	3.78	109.03	105.16
2	D	1402	HEM	C3A-C4A-NA	-3.70	106.62	109.41
2	B	1402	HEM	CBA-CAA-C2A	-3.57	106.40	112.69
3	B	1404	K2B	C7-C8-C9	-3.56	106.11	110.47
2	D	1402	HEM	CBA-CAA-C2A	-3.55	106.44	112.69
3	B	1404	K2B	C5-C4-C3	-3.52	119.42	123.77
3	A	1404	K2B	C1-C10-C9	-3.40	104.07	108.60
2	D	1402	HEM	CMA-C3A-C4A	-3.38	123.42	128.62
2	A	1402	HEM	CBA-CAA-C2A	-3.33	106.83	112.69
3	B	1404	K2B	O1-C3-C4	-3.33	116.39	121.59
3	C	1404	K2B	C10-C9-C8	3.26	117.60	112.68

Continued on next page...

Continued from previous page...

Mol	Chain	Res	Type	Atoms	Z	Observed(°)	Ideal(°)
2	C	1402	HEM	C4A-CHB-C1B	-3.24	123.21	127.47
2	B	1402	HEM	CBD-CAD-C3D	-3.20	107.38	114.37
2	C	1402	HEM	CBD-CAD-C3D	-3.17	107.44	114.37
2	D	1402	HEM	C1B-NB-C4B	3.10	108.34	105.16
2	D	1402	HEM	CHC-C1C-NC	3.05	127.38	124.73
3	A	1404	K2B	C19-C10-C9	3.03	115.58	111.69
3	C	1404	K2B	C19-C10-C5	-2.99	103.58	108.39
3	D	1404	K2B	C19-C10-C1	2.98	114.19	109.45
2	D	1402	HEM	CHC-C4B-NB	2.98	127.06	124.58
3	A	1404	K2B	C16-C15-C14	-2.98	99.10	105.14
3	C	1404	K2B	C19-C10-C1	2.96	114.16	109.45
3	A	1404	K2B	C15-C16-C17	2.96	111.15	105.14
2	B	1402	HEM	C1B-NB-C4B	2.93	108.16	105.16
3	D	1404	K2B	C6-C7-C8	2.88	116.51	111.71
3	A	1404	K2B	C16-C17-C13	-2.87	99.77	103.82
3	A	1404	K2B	C15-C14-C8	-2.77	114.62	119.03
3	C	1404	K2B	C7-C6-C5	-2.72	106.92	111.90
2	D	1402	HEM	C4A-NA-C1A	2.70	110.32	106.76
2	A	1402	HEM	C4A-NA-C1A	2.67	110.28	106.76
2	B	1402	HEM	C4D-ND-C1D	2.65	107.87	105.16
3	C	1404	K2B	C6-C5-C10	2.62	119.63	116.69
2	C	1402	HEM	C4A-C3A-C2A	2.61	108.81	107.00
2	A	1402	HEM	CHA-C4D-ND	2.59	127.87	124.31
2	B	1402	HEM	C2D-C1D-ND	-2.58	109.88	112.93
3	D	1404	K2B	C6-C5-C10	2.53	119.53	116.69
3	A	1404	K2B	C18-C13-C12	2.52	114.71	110.55
2	C	1402	HEM	CMA-C3A-C2A	2.48	129.62	124.94
3	A	1404	K2B	C12-C13-C14	-2.46	103.17	107.28
2	B	1402	HEM	CHA-C4D-ND	2.45	127.67	124.31
3	C	1404	K2B	C1-C2-C3	-2.44	106.83	111.63
3	A	1404	K2B	C5-C4-C3	-2.44	120.76	123.77
2	A	1402	HEM	C2D-C1D-ND	-2.44	110.05	112.93
2	A	1402	HEM	CHB-C4A-NA	2.41	128.60	124.58
3	C	1404	K2B	C16-C15-C14	-2.40	100.27	105.14
2	C	1402	HEM	C3A-C4A-NA	-2.39	107.61	109.41
2	A	1402	HEM	CHC-C4B-NB	2.35	126.54	124.58
3	B	1404	K2B	C16-C17-C13	-2.30	100.58	103.82
3	C	1404	K2B	C15-C16-C17	2.25	109.71	105.14
2	C	1402	HEM	CHA-C4D-ND	2.25	127.39	124.31
3	C	1404	K2B	C10-C5-C4	-2.24	120.17	122.69
3	C	1404	K2B	C2-C3-C4	2.22	120.16	116.76
3	D	1404	K2B	C12-C13-C14	-2.21	103.58	107.28

Continued on next page...

Continued from previous page...

Mol	Chain	Res	Type	Atoms	Z	Observed(°)	Ideal(°)
2	C	1402	HEM	CAD-C3D-C4D	2.17	128.43	124.53
2	C	1402	HEM	CHC-C1C-NC	2.16	126.61	124.73
2	D	1402	HEM	C2D-C1D-ND	-2.15	110.39	112.93
2	C	1402	HEM	C2A-C1A-NA	-2.14	106.76	109.73
3	D	1404	K2B	C5-C4-C3	-2.12	121.16	123.77
3	C	1404	K2B	C15-C14-C13	2.08	106.74	103.82
3	C	1404	K2B	C12-C11-C9	-2.08	109.68	113.15
3	A	1404	K2B	C2-C3-C4	2.06	119.90	116.76
3	A	1404	K2B	C12-C13-C17	-2.05	112.68	116.53
3	C	1404	K2B	C7-C8-C9	-2.05	107.96	110.47
3	B	1404	K2B	C19-C10-C1	2.01	112.65	109.45
2	D	1402	HEM	CMC-C2C-C3C	2.00	130.88	126.16

There are no chirality outliers.

There are no torsion outliers.

There are no ring outliers.

5.7 Other polymers ⓘ

There are no such residues in this entry.

5.8 Polymer linkage issues

There are no chain breaks in this entry.

6 Fit of model and data ⓘ

6.1 Protein, DNA and RNA chains ⓘ

In the following table, the column labelled ‘#RSRZ> 2’ contains the number (and percentage) of RSRZ outliers, followed by percent RSRZ outliers for the chain as percentile scores relative to all X-ray entries and entries of similar resolution. The OWAB column contains the minimum, median, 95th percentile and maximum values of the occupancy-weighted average B-factor per residue. The column labelled ‘Q< 0.9’ lists the number of (and percentage) of residues with an average occupancy less than 0.9.

Mol	Chain	Analysed	<RSRZ>	#RSRZ>2	OWAB(Å ²)	Q<0.9
1	A	396/407 (97%)	-0.51	5 (1%) 74 80	7, 14, 29, 49	0
1	B	395/407 (97%)	-0.61	3 (0%) 83 88	5, 11, 28, 40	0
1	C	395/407 (97%)	-0.52	4 (1%) 79 85	6, 13, 28, 45	0
1	D	394/407 (96%)	-0.60	1 (0%) 91 95	6, 12, 28, 40	0
All	All	1580/1628 (97%)	-0.56	13 (0%) 83 88	5, 13, 28, 49	0

All (13) RSRZ outliers are listed below:

Mol	Chain	Res	Type	RSRZ
1	A	5	LEU	4.7
1	A	165	GLY	3.5
1	A	170	VAL	3.5
1	B	173	ALA	2.9
1	B	215	GLY	2.8
1	A	169	HIS	2.7
1	B	174	ALA	2.5
1	D	215	GLY	2.5
1	A	173	ALA	2.3
1	C	215	GLY	2.3
1	C	372	ASP	2.3
1	C	169	HIS	2.1
1	C	123[A]	ARG	2.0

6.2 Non-standard residues in protein, DNA, RNA chains ⓘ

There are no non-standard protein/DNA/RNA residues in this entry.

6.3 Carbohydrates ⓘ

There are no carbohydrates in this entry.

6.4 Ligands ⓘ

In the following table, the Atoms column lists the number of modelled atoms in the group and the number defined in the chemical component dictionary. LLDF column lists the quality of electron density of the group with respect to its neighbouring residues in protein, DNA or RNA chains. The B-factors column lists the minimum, median, 95th percentile and maximum values of B factors of atoms in the group. The column labelled 'Q< 0.9' lists the number of atoms with occupancy less than 0.9.

Mol	Type	Chain	Res	Atoms	RSR	LLDF	B-factors(Å ²)	Q<0.9
3	K2B	D	1404	28/28	0.07	2.14	5,9,13,16	0
3	K2B	B	1404	28/28	0.07	1.34	4,9,20,23	0
3	K2B	A	1404	28/28	0.07	0.91	8,11,16,19	0
2	HEM	D	1402	43/43	0.07	0.68	2,7,9,25	0
3	K2B	C	1404	28/28	0.07	0.61	5,10,18,18	0
4	MG	B	1405	1/1	0.07	0.49	21,21,21,21	0
2	HEM	B	1402	43/43	0.06	0.39	4,7,10,22	0
2	HEM	A	1402	43/43	0.06	0.30	4,8,10,24	0
2	HEM	C	1402	43/43	0.06	0.25	5,8,11,19	0

6.5 Other polymers ⓘ

There are no such residues in this entry.