



# wwPDB X-ray Structure Validation Summary Report

Feb 26, 2014 – 05:52 PM GMT

PDB ID : 1Z2B  
Title : Tubulin-colchicine-vinblastine:stathmin-like domain complex  
Authors : Gigant, B.; Wang, C.; Ravelli, R.B.G.; Roussi, F.; Steinmetz, M.O.; Curmi, P.A.; Sobel, A.; Knossow, M.  
Deposited on : 2005-03-08  
Resolution : 4.10 Å(reported)

This is a wwPDB validation summary report for a publicly released PDB entry.

We welcome your comments at [validation@mail.wwpdb.org](mailto:validation@mail.wwpdb.org)

A user guide is available at <http://wwpdb.org/ValidationPDFNotes.html>

---

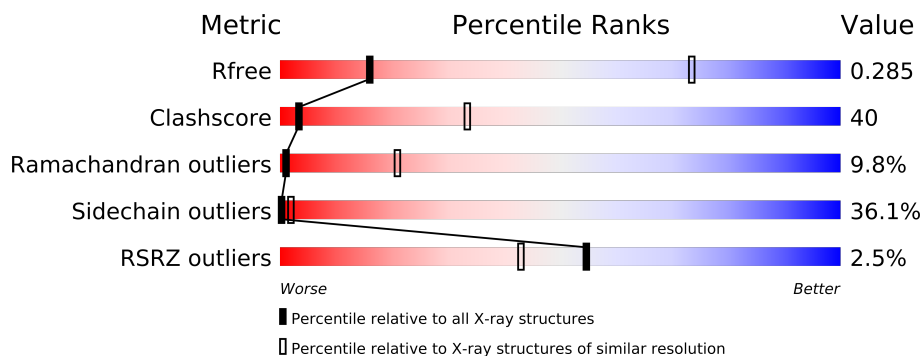
The following versions of software and data (see [references](#)) were used in the production of this report:

MolProbity	:	4.02b-467
Mogul	:	1.15 2013
Xtriage (Phenix)	:	dev-1323
EDS	:	stable22639
Percentile statistics	:	21963
Refmac	:	5.8.0049
CCP4	:	6.3.0 (Settle)
Ideal geometry (proteins)	:	Engh & Huber (2001)
Ideal geometry (DNA, RNA)	:	Parkinson et. al. (1996)
Validation Pipeline (wwPDB-VP)	:	stable22683

# 1 Overall quality at a glance

The reported resolution of this entry is 4.10 Å.

Percentile scores (ranging between 0-100) for global validation metrics of the entry are shown in the following graphic. The table shows the number of entries on which the scores are based.



Metric	Whole archive (#Entries)	Similar resolution (#Entries, resolution range(Å))
$R_{free}$	66092	1002 (4.70-3.48)
Clashscore	79885	1248 (4.70-3.50)
Ramachandran outliers	78287	1183 (4.70-3.50)
Sidechain outliers	78261	1168 (4.70-3.50)
RSRZ outliers	66119	1002 (4.70-3.48)

The table below summarises the geometric issues observed across the polymeric chains and their fit to the electron density. The red, orange, yellow and green segments on the lower bar indicate the fraction of residues that contain outliers for  $\geq 3$ , 2, 1 and 0 types of geometric quality criteria. The upper red bar (where present) indicates the fraction of residues that have poor fit to the electron density.

Mol	Chain	Length	Quality of chain
1	A	448	
1	C	448	
2	B	445	
2	D	445	
3	E	142	

## 2 Entry composition

There are 8 unique types of molecules in this entry. The entry contains 14173 atoms, of which 0 are hydrogen and 0 are deuterium.

In the tables below, the ZeroOcc column contains the number of atoms modelled with zero occupancy, the AltConf column contains the number of residues with at least one atom in alternate conformation and the Trace column contains the number of residues modelled with at most 2 atoms.

- Molecule 1 is a protein called Tubulin alpha chain.

Mol	Chain	Residues	Atoms					ZeroOcc	AltConf	Trace
1	A	427	Total	C	N	O	S	0	0	0
			3290	2091	556	622	21			
1	C	427	Total	C	N	O	S	38	0	0
			3248	2058	552	618	20			

There are 22 discrepancies between the modelled and reference sequences:

Chain	Residue	Modelled	Actual	Comment	Reference
A	7	ILE	VAL	SEE REMARK 999	GB 59858433
A	16	ILE	MET	SEE REMARK 999	GB 59858433
A	50	ASN	THR	SEE REMARK 999	GB 59858433
A	54	SER	CYS	SEE REMARK 999	GB 59858433
A	78	VAL	ILE	SEE REMARK 999	GB 59858433
A	80	THR	ASN	SEE REMARK 999	GB 59858433
A	82	THR	PRO	SEE REMARK 999	GB 59858433
A	117	LEU	PRO	SEE REMARK 999	GB 59858433
A	126	ALA	SER	SEE REMARK 999	GB 59858433
A	232	GLY	SER	SEE REMARK 999	GB 59858433
A	334	THR	ALA	SEE REMARK 999	GB 59858433
C	7	ILE	VAL	SEE REMARK 999	GB 59858433
C	16	ILE	MET	SEE REMARK 999	GB 59858433
C	50	ASN	THR	SEE REMARK 999	GB 59858433
C	54	SER	CYS	SEE REMARK 999	GB 59858433
C	78	VAL	ILE	SEE REMARK 999	GB 59858433
C	80	THR	ASN	SEE REMARK 999	GB 59858433
C	82	THR	PRO	SEE REMARK 999	GB 59858433
C	117	LEU	PRO	SEE REMARK 999	GB 59858433
C	126	ALA	SER	SEE REMARK 999	GB 59858433
C	232	GLY	SER	SEE REMARK 999	GB 59858433
C	334	THR	ALA	SEE REMARK 999	GB 59858433

- Molecule 2 is a protein called Tubulin beta chain.

Mol	Chain	Residues	Atoms					ZeroOcc	AltConf	Trace
2	B	419	Total	C	N	O	S	0	0	0
			3240	2038	546	632	24			
2	D	419	Total	C	N	O	S	0	0	0
			3237	2037	544	632	24			

There are 4 discrepancies between the modelled and reference sequences:

Chain	Residue	Modelled	Actual	Comment	Reference
B	172	VAL	MET	SEE REMARK 999	GB 50844501
B	318	VAL	ILE	SEE REMARK 999	GB 50844501
D	172	VAL	MET	SEE REMARK 999	GB 50844501
D	318	VAL	ILE	SEE REMARK 999	GB 50844501

- Molecule 3 is a protein called RB3 STATHMIN-LIKE DOMAIN 4.

Mol	Chain	Residues	Atoms					ZeroOcc	AltConf	Trace
3	E	124	Total	C	N	O	S	0	0	0
			917	555	174	183	5			

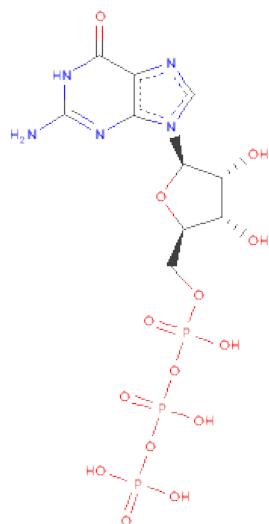
There is a discrepancy between the modelled and reference sequences:

Chain	Residue	Modelled	Actual	Comment	Reference
E	4	ALA	-	SEE REMARK 999	UNP P63043

- Molecule 4 is MAGNESIUM ION (three-letter code: MG) (formula: Mg).

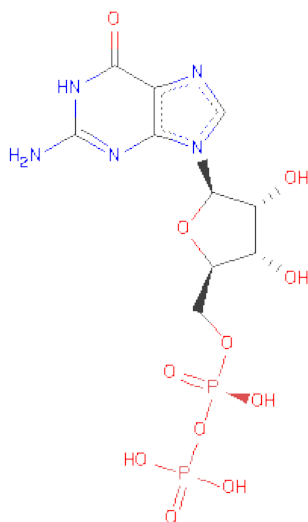
Mol	Chain	Residues	Atoms		ZeroOcc	AltConf
4	A	1	Total	Mg	0	0
			1	1		
4	C	1	Total	Mg	0	0
			1	1		

- Molecule 5 is GUANOSINE-5'-TRIPHOSPHATE (three-letter code: GTP) (formula: C<sub>10</sub>H<sub>16</sub>N<sub>5</sub>O<sub>14</sub>P<sub>3</sub>).



Mol	Chain	Residues	Atoms					ZeroOcc	AltConf
5	A	1	Total	C	N	O	P	0	0
			32	10	5	14	3		
5	C	1	Total	C	N	O	P	0	0
			32	10	5	14	3		

- Molecule 6 is GUANOSINE-5'-DIPHOSPHATE (three-letter code: GDP) (formula:  $C_{10}H_{15}N_5O_{11}P_2$ ).



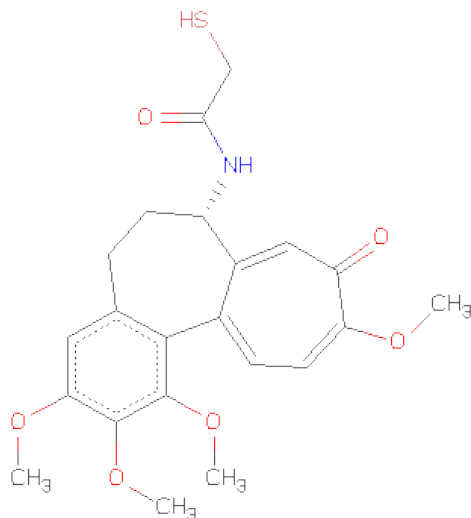
Mol	Chain	Residues	Atoms					ZeroOcc	AltConf
6	B	1	Total	C	N	O	P	0	0
			28	10	5	11	2		

*Continued on next page...*

Continued from previous page...

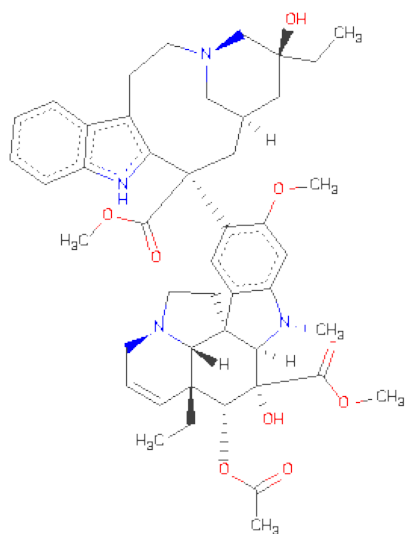
Mol	Chain	Residues	Atoms					ZeroOcc	AltConf
6	D	1	Total	C	N	O	P	0	0
			28	10	5	11	2		

- Molecule 7 is 2-MERCAPTO-N-[1,2,3,10-TETRAMETHOXY-9-OXO-5,6,7,9-TETRAHYDRO-BENZO[A]HEPTALEN-7-YL]ACETAMIDE (three-letter code: CN2) (formula:  $C_{22}H_{25}NO_6S$ ).



Mol	Chain	Residues	Atoms					ZeroOcc	AltConf
7	B	1	Total	C	N	O	S	0	0
			30	22	1	6	1		
7	D	1	Total	C	N	O	S	0	0
			30	22	1	6	1		

- Molecule 8 is (2ALPHA,2'BETA,3BETA,4ALPHA,5BETA)-VINCALEUKOBLASTINE (three-letter code: VLB) (formula:  $C_{46}H_{58}N_4O_9$ ).

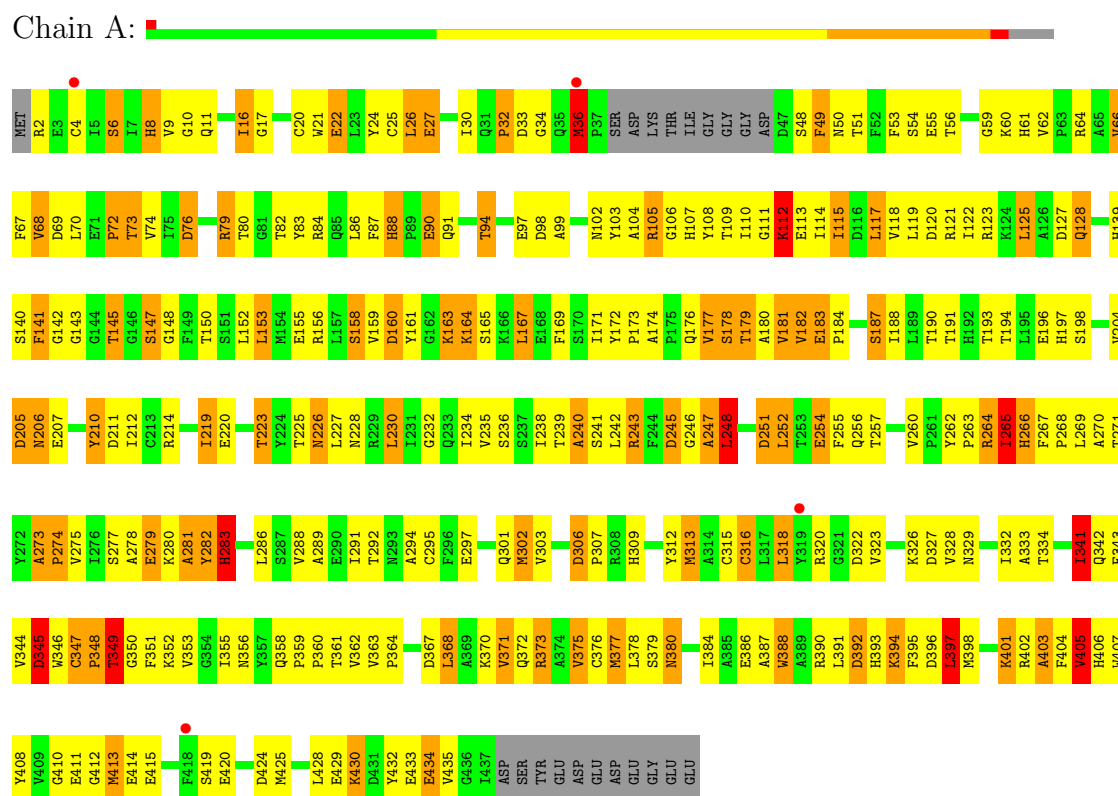


Mol	Chain	Residues	Atoms				ZeroOcc	AltConf
8	C	1	Total	C	N	O	0	0
			59	46	4	9		

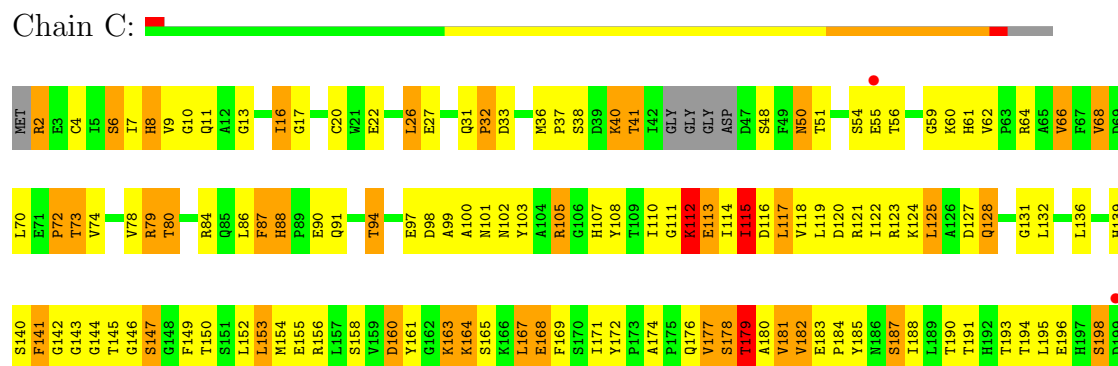
### 3 Residue-property plots

These plots are drawn for all protein, RNA and DNA chains in the entry. The first graphic for a chain summarises the proportions of errors displayed in the second graphic. The second graphic shows the sequence view annotated by issues in geometry and electron density. Residues are color-coded according to the number of geometric quality criteria for which they contain at least one outlier: green = 0, yellow = 1, orange = 2 and red = 3 or more. A red dot above a residue indicates a poor fit to the electron density ( $RSRZ > 2$ ). Stretches of 2 or more consecutive residues without any outlier are shown as a green connector. Residues present in the sample, but not in the model, are shown in grey.

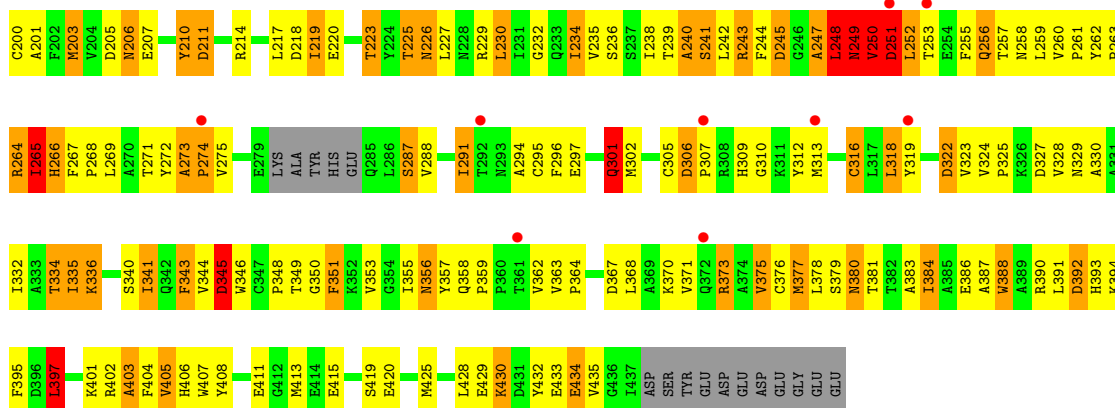
#### • Molecule 1: Tubulin alpha chain



#### • Molecule 1: Tubulin alpha chain

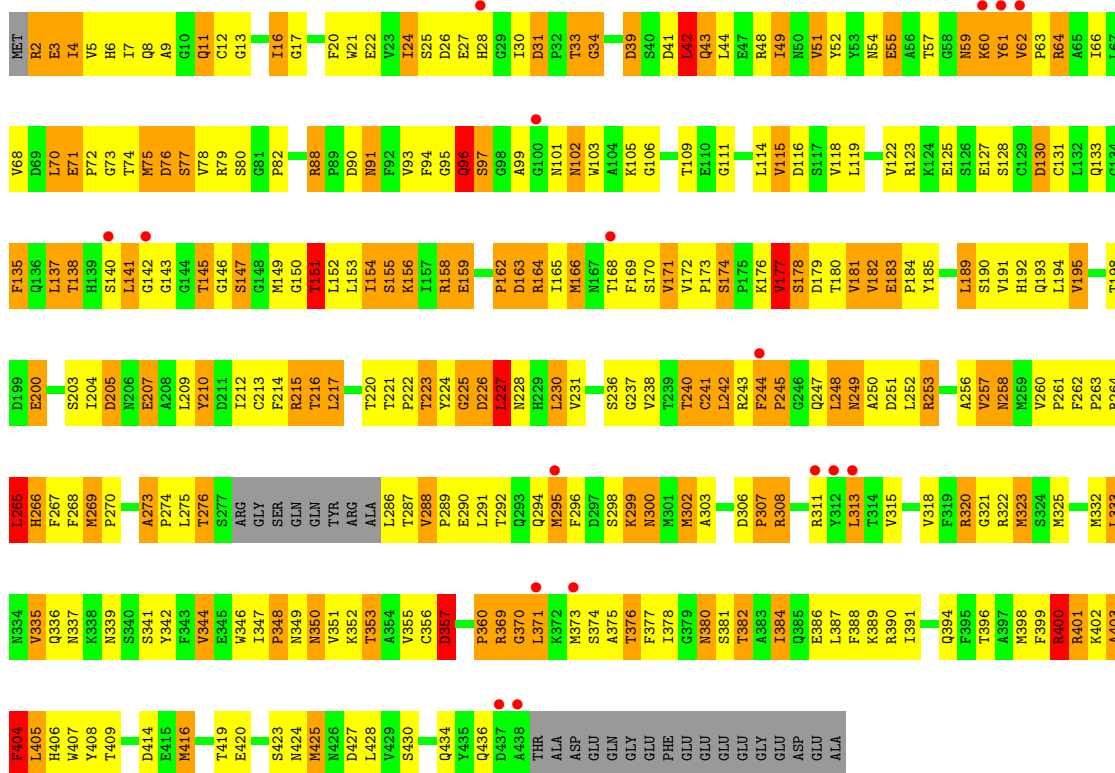






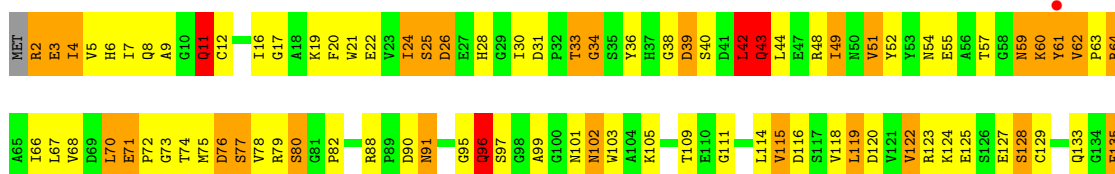
• Molecule 2: Tubulin beta chain

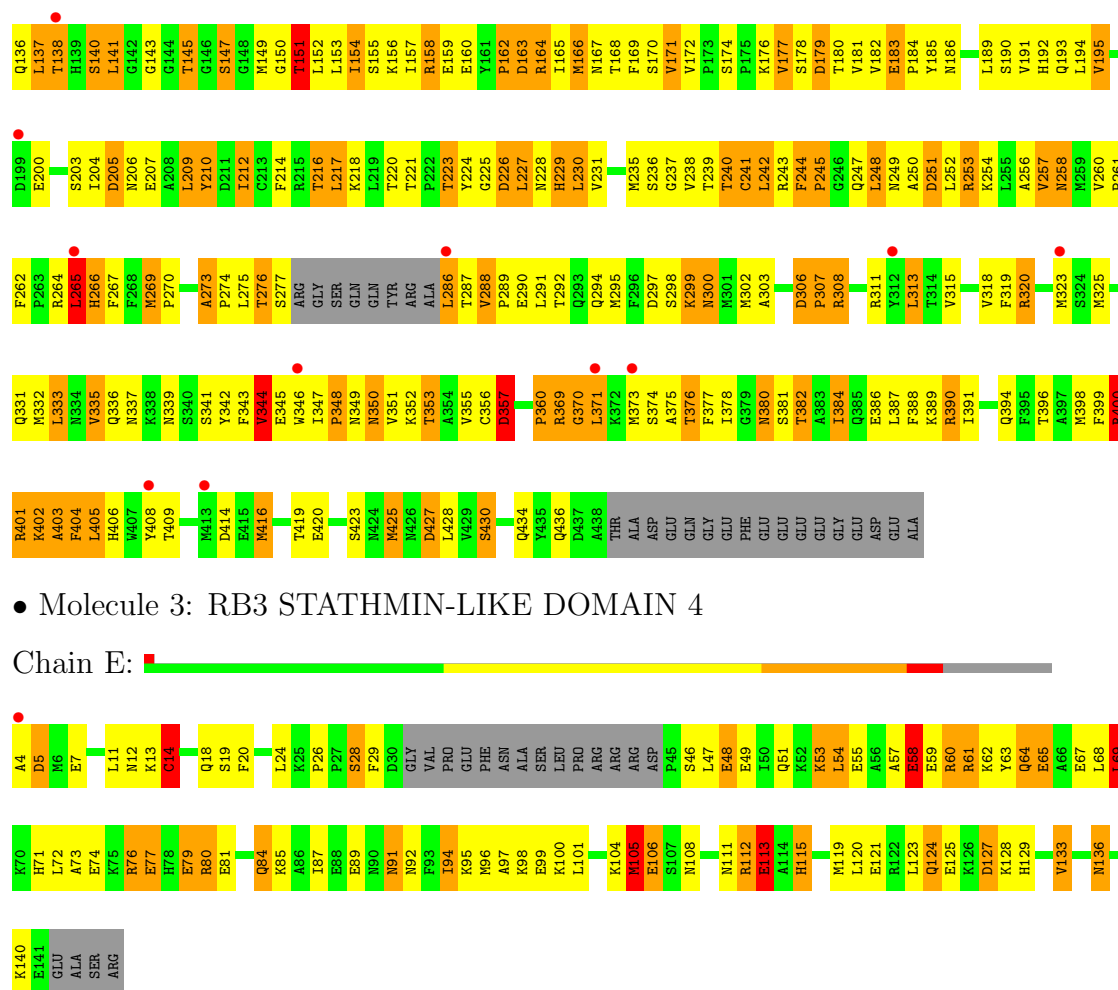
Chain B:



• Molecule 2: Tubulin beta chain

Chain D:





## 4 Data and refinement statistics

Property	Value	Source
Space group	P 65	Depositor
Cell constants a, b, c, $\alpha$ , $\beta$ , $\gamma$	324.85Å 324.85Å 54.21Å 90.00° 90.00° 120.00°	Depositor
Resolution (Å)	20.00 – 4.10 38.31 – 4.09	Depositor EDS
% Data completeness (in resolution range)	95.4 (20.00-4.10) 94.7 (38.31-4.09)	Depositor EDS
$R_{merge}$	0.04	Depositor
$R_{sym}$	(Not available)	Depositor
$\langle I/\sigma(I) \rangle$ <sup>1</sup>	3.12 (at 4.13Å)	Xtriage
Refinement program	REFMAC 5.1.24	Depositor
R, $R_{free}$	0.209 , 0.269 0.222 , 0.285	Depositor DCC
$R_{free}$ test set	1283 reflections (5.35%)	DCC
Wilson B-factor (Å <sup>2</sup> )	197.5	Xtriage
Anisotropy	0.058	Xtriage
Bulk solvent $k_{sol}$ (e/Å <sup>3</sup> ), $B_{sol}$ (Å <sup>2</sup> )	0.27 , 206.0	EDS
Estimated twinning fraction	0.035 for h,-h-k,-l	Xtriage
L-test for twinning	$\langle  L  \rangle = 0.48$ , $\langle L^2 \rangle = 0.30$	Xtriage
Outliers	0 of 25273 reflections	Xtriage
$F_o, F_c$ correlation	0.93	EDS
Total number of atoms	14173	wwPDB-VP
Average B, all atoms (Å <sup>2</sup> )	117.0	wwPDB-VP

Xtriage's analysis on translational NCS is as follows: *The largest off-origin peak in the Patterson function is 1.78% of the height of the origin peak. No significant pseudotranslation is detected.*

<sup>1</sup>Intensities estimated from amplitudes.

## 5 Model quality

### 5.1 Standard geometry

Bond lengths and bond angles in the following residue types are not validated in this section: GDP, GTP, MG, VLB, CN2

The Z score for a bond length (or angle) is the number of standard deviations the observed value is removed from the expected value. A bond length (or angle) with  $|Z| > 5$  is considered an outlier worth inspection. RMSZ is the root-mean-square of all Z scores of the bond lengths (or angles).

Mol	Chain	Bond lengths		Bond angles	
		RMSZ	# Z  >5	RMSZ	# Z  >5
1	A	0.80	1/3367 (0.0%)	0.97	12/4579 (0.3%)
1	C	0.79	3/3320 (0.1%)	1.02	16/4520 (0.4%)
2	B	0.75	0/3312	0.97	9/4498 (0.2%)
2	D	0.73	0/3309	1.00	13/4494 (0.3%)
3	E	0.73	1/925 (0.1%)	0.92	3/1241 (0.2%)
All	All	0.76	5/14233 (0.0%)	0.98	53/19332 (0.3%)

Chiral center outliers are detected by calculating the chiral volume of a chiral center and verifying if the center is modelled as a planar moiety or with the opposite hand. A planarity outlier is detected by checking planarity of atoms in a peptide group, atoms in a mainchain group or atoms of a sidechain that are expected to be planar.

Mol	Chain	#Chirality outliers	#Planarity outliers
1	A	0	1
1	C	0	4
2	B	0	1
2	D	0	1
3	E	0	1
All	All	0	8

All (5) bond length outliers are listed below:

Mol	Chain	Res	Type	Atoms	Z	Observed(Å)	Ideal(Å)
1	C	306	ASP	C-N	-6.13	1.22	1.34
3	E	105	MET	SD-CE	5.45	2.08	1.77
1	A	36	MET	SD-CE	5.41	2.08	1.77
1	C	203	MET	SD-CE	5.34	2.07	1.77
1	C	168	GLU	CD-OE1	5.03	1.31	1.25

The worst 5 of 53 bond angle outliers are listed below:

Mol	Chain	Res	Type	Atoms	Z	Observed(°)	Ideal(°)
1	C	301	GLN	O-C-N	-14.33	99.77	122.70
1	C	120	ASP	CB-CG-OD2	7.82	125.33	118.30
1	C	301	GLN	CA-C-N	7.40	133.48	117.20
1	C	160	ASP	CB-CG-OD2	7.29	124.86	118.30
1	A	205	ASP	CB-CG-OD2	7.25	124.83	118.30

There are no chirality outliers.

5 of 8 planarity outliers are listed below:

Mol	Chain	Res	Type	Group
1	A	177	VAL	Peptide
2	B	162	PRO	Peptide
1	C	177	VAL	Peptide
1	C	248	LEU	Peptide
1	C	249	ASN	Peptide

## 5.2 Close contacts ⓘ

In the following table, the Non-H and H(model) columns list the number of non-hydrogen atoms and hydrogen atoms in the chain respectively. The H(added) column lists the number of hydrogens added by MolProbity. The Clashes column lists the number of clashes within the asymmetric unit, and the number in parentheses is this value normalized per 1000 atoms of the molecule in the chain. The Symm-Clashes column gives symmetry related clashes, in the same way as for the Clashes column.

Mol	Chain	Non-H	H(model)	H(added)	Clashes	Symm-Clashes
1	A	3290	0	3154	240	0
1	C	3248	0	3087	258	0
2	B	3240	0	3056	300	0
2	D	3237	0	3054	272	0
3	E	917	0	803	66	0
4	A	1	0	0	0	0
4	C	1	0	0	0	0
5	A	32	0	12	4	0
5	C	32	0	12	5	0
6	B	28	0	12	5	0
6	D	28	0	12	7	0
7	B	30	0	23	7	0
7	D	30	0	23	8	0
8	C	59	0	58	21	0
All	All	14173	0	13306	1096	0

Clashscore is defined as the number of clashes calculated for the entry per 1000 atoms (including hydrogens) of the entry. The overall clashscore for this entry is 40.

The worst 5 of 1096 close contacts within the same asymmetric unit are listed below.

Atom-1	Atom-2	Distance(Å)	Clash(Å)
1:C:203:MET:CE	1:C:203:MET:SD	2.07	1.42
1:A:36:MET:CE	1:A:36:MET:SD	2.08	1.40
3:E:105:MET:SD	3:E:105:MET:CE	2.08	1.39
2:B:241:CYS:HB3	2:B:247:GLN:NE2	1.55	1.20
1:A:346:TRP:O	1:A:346:TRP:HE3	1.27	1.17

There are no symmetry-related clashes.

## 5.3 Torsion angles

### 5.3.1 Protein backbone ⓘ

In the following table, the Percentiles column shows the percent Ramachandran outliers of the chain as a percentile score with respect to all X-ray entries followed by that with respect to entries of similar resolution. The Analysed column shows the number of residues for which the backbone conformation was analysed, and the total number of residues.

Mol	Chain	Analysed	Favoured	Allowed	Outliers	Percentiles	
1	A	423/448 (94%)	317 (75%)	75 (18%)	31 (7%)	2	31
1	C	421/448 (94%)	315 (75%)	68 (16%)	38 (9%)	1	24
2	B	415/445 (93%)	298 (72%)	71 (17%)	46 (11%)	1	17
2	D	415/445 (93%)	297 (72%)	73 (18%)	45 (11%)	1	17
3	E	120/142 (84%)	68 (57%)	36 (30%)	16 (13%)	0	12
All	All	1794/1928 (93%)	1295 (72%)	323 (18%)	176 (10%)	1	21

5 of 176 Ramachandran outliers are listed below:

Mol	Chain	Res	Type
1	A	55	GLU
1	A	62	VAL
1	A	72	PRO
1	A	112	LYS
1	A	240	ALA

### 5.3.2 Protein sidechains ⓘ

In the following table, the Percentiles column shows the percent sidechain outliers of the chain as a percentile score with respect to all X-ray entries followed by that with respect to entries of similar resolution. The Analysed column shows the number of residues for which the sidechain conformation was analysed, and the total number of residues.

Mol	Chain	Analysed	Rotameric	Outliers	Percentiles	
1	A	345/377 (92%)	228 (66%)	117 (34%)	0	3
1	C	336/377 (89%)	224 (67%)	112 (33%)	0	3
2	B	348/383 (91%)	217 (62%)	131 (38%)	0	1
2	D	348/383 (91%)	218 (63%)	130 (37%)	0	1
3	E	80/126 (64%)	44 (55%)	36 (45%)	0	0
All	All	1457/1646 (88%)	931 (64%)	526 (36%)	0	2

5 of 526 residues with a non-rotameric sidechain are listed below:

Mol	Chain	Res	Type
2	B	400	ARG
1	C	187	SER
2	D	423	SER
2	B	423	SER
1	C	88	HIS

Some sidechains can be flipped to improve hydrogen bonding and reduce clashes. 5 of 59 such sidechains are listed below:

Mol	Chain	Res	Type
2	B	337	ASN
1	C	91	GLN
2	D	436	GLN
2	B	339	ASN
2	B	380	ASN

### 5.3.3 RNA ⓘ

There are no RNA chains in this entry.

## 5.4 Non-standard residues in protein, DNA, RNA chains ⓘ

There are no non-standard protein/DNA/RNA residues in this entry.

## 5.5 Carbohydrates

There are no carbohydrates in this entry.

## 5.6 Ligand geometry

Of 9 ligands modelled in this entry, 2 are monoatomic - leaving 7 for Mogul analysis.

In the following table, the Counts columns list the number of bonds (or angles) for which Mogul statistics could be retrieved, the number of bonds (or angles) that are observed in the model and the number of bonds (or angles) that are defined in the chemical component dictionary. The Link column lists molecule types, if any, to which the group is linked. The Z score for a bond length (or angle) is the number of standard deviations the observed value is removed from the expected value. A bond length (or angle) with  $|Z| > 2$  is considered an outlier worth inspection. RMSZ is the root-mean-square of all Z scores of the bond lengths (or angles).

Mol	Type	Chain	Res	Link	Bond lengths			Bond angles		
					Counts	RMSZ	# $ Z  > 2$	Counts	RMSZ	# $ Z  > 2$
5	GTP	A	600	4	34,34,34	1.05	2 (5%)	51,54,54	3.15	8 (15%)
6	GDP	B	602	-	30,30,30	1.00	1 (3%)	44,47,47	2.18	10 (22%)
7	CN2	B	700	-	31,32,32	3.37	7 (22%)	40,45,45	5.85	21 (52%)
5	GTP	C	601	4	34,34,34	1.09	3 (8%)	51,54,54	1.91	13 (25%)
8	VLB	C	800	-	67,67,67	1.62	9 (13%)	106,108,108	3.33	29 (27%)
6	GDP	D	603	-	30,30,30	0.97	1 (3%)	44,47,47	2.43	10 (22%)
7	CN2	D	701	-	31,32,32	3.22	6 (19%)	40,45,45	6.34	18 (45%)

In the following table, the Chirals column lists the number of chiral outliers, the number of chiral centers analysed, the number of these observed in the model and the number defined in the chemical component dictionary. Similar counts are reported in the Torsion and Rings columns. '-' means no outliers of that kind were identified.

Mol	Type	Chain	Res	Link	Chirals	Torsions	Rings
5	GTP	A	600	4	-	0/22/38/38	0/1/3/3
6	GDP	B	602	-	-	0/16/32/32	0/1/3/3
7	CN2	B	700	-	-	0/11/27/27	0/0/3/3
5	GTP	C	601	4	-	0/22/38/38	0/1/3/3
8	VLB	C	800	-	-	0/42/131/131	0/0/9/9
6	GDP	D	603	-	-	0/16/32/32	0/1/3/3
7	CN2	D	701	-	-	0/11/27/27	0/0/3/3

The worst 5 of 29 bond length outliers are listed below:



Mol	Chain	Res	Type	Atoms	Z	Observed(Å)	Ideal(Å)
7	B	700	CN2	C20-C21	-11.04	1.23	1.40
7	D	701	CN2	C20-C21	-10.20	1.24	1.40
7	B	700	CN2	C19-C17	-8.38	1.24	1.39
7	D	701	CN2	C19-C17	-8.35	1.24	1.39
7	B	700	CN2	C15-C16	7.34	1.54	1.39

The worst 5 of 109 bond angle outliers are listed below:

Mol	Chain	Res	Type	Atoms	Z	Observed(°)	Ideal(°)
7	D	701	CN2	C20-C21-C22	25.87	123.75	113.34
7	B	700	CN2	C20-C21-C22	21.29	121.90	113.34
8	C	800	VLB	C58-C59-C60	-20.47	117.09	125.82
5	A	600	GTP	C6-C5-N7	-19.47	131.52	134.14
7	D	701	CN2	C15-C16-C17	-18.35	120.81	128.42

There are no chirality outliers.

There are no torsion outliers.

There are no ring outliers.

## 5.7 Other polymers ⓘ

There are no such residues in this entry.

## 5.8 Polymer linkage issues

There are no chain breaks in this entry.

## 6 Fit of model and data ⓘ

### 6.1 Protein, DNA and RNA chains ⓘ

In the following table, the column labelled ‘#RSRZ> 2’ contains the number (and percentage) of RSRZ outliers, followed by percent RSRZ outliers for the chain as percentile scores relative to all X-ray entries and entries of similar resolution. The OWAB column contains the minimum, median, 95<sup>th</sup> percentile and maximum values of the occupancy-weighted average B-factor per residue. The column labelled ‘Q< 0.9’ lists the number of (and percentage) of residues with an average occupancy less than 0.9.

Mol	Chain	Analysed	<RSRZ>	#RSRZ>2	OWAB(Å <sup>2</sup> )	Q<0.9
1	A	427/448 (95%)	0.14	4 (0%) 81 68	118, 118, 118, 118	1 (0%)
1	C	422/448 (94%)	0.28	11 (2%) 53 42	118, 118, 118, 118	0
2	B	419/445 (94%)	0.33	17 (4%) 35 30	118, 118, 118, 118	0
2	D	419/445 (94%)	0.32	12 (2%) 49 39	118, 118, 118, 118	0
3	E	124/142 (87%)	-0.03	1 (0%) 83 70	118, 118, 118, 118	0
All	All	1811/1928 (93%)	0.25	45 (2%) 54 43	118, 118, 118, 118	1 (0%)

The worst 5 of 45 RSRZ outliers are listed below:

Mol	Chain	Res	Type	RSRZ
2	B	61	TYR	5.3
2	B	438	ALA	3.8
2	D	286	LEU	3.5
1	C	319	TYR	3.3
2	D	199	ASP	2.9

### 6.2 Non-standard residues in protein, DNA, RNA chains ⓘ

There are no non-standard protein/DNA/RNA residues in this entry.

### 6.3 Carbohydrates ⓘ

There are no carbohydrates in this entry.

### 6.4 Ligands ⓘ

In the following table, the Atoms column lists the number of modelled atoms in the group and the number defined in the chemical component dictionary. LLDF column lists the quality of electron

density of the group with respect to its neighbouring residues in protein, DNA or RNA chains. The B-factors column lists the minimum, median, 95<sup>th</sup> percentile and maximum values of B factors of atoms in the group. The column labelled 'Q< 0.9' lists the number of atoms with occupancy less than 0.9.

Mol	Type	Chain	Res	Atoms	RSR	LLDF	B-factors(Å <sup>2</sup> )	Q<0.9
7	CN2	B	700	30/30	0.32	0.32	117,117,117,117	0
8	VLB	C	800	59/59	0.28	-0.17	117,117,117,117	0
7	CN2	D	701	30/30	0.26	-0.37	117,117,117,117	0
6	GDP	B	602	28/28	0.29	-0.57	117,117,117,117	0
5	GTP	A	600	32/32	0.19	-1.01	117,117,117,117	0
5	GTP	C	601	32/32	0.20	-1.04	117,117,117,117	0
6	GDP	D	603	28/28	0.16	-1.52	117,117,117,117	0
4	MG	A	500	1/1	0.21	-1.68	117,117,117,117	0
4	MG	C	501	1/1	0.12	-2.77	117,117,117,117	0

## 6.5 Other polymers ⓘ

There are no such residues in this entry.