



Full wwPDB X-ray Structure Validation Report

Feb 28, 2014 – 07:04 AM GMT

PDB ID : 2ZY3
Title : dodecameric L-aspartate beta-decarboxylase
Authors : Chen, H.-J.; Ko, T.-P.; Lee, C.-Y.; Wang, N.-C.; Wang, A.H.-J.
Deposited on : 2009-01-13
Resolution : 2.50 Å(reported)

This is a full wwPDB validation report for a publicly released PDB entry.
We welcome your comments at validation@mail.wwpdb.org
A user guide is available at <http://wwpdb.org/ValidationPDFNotes.html>

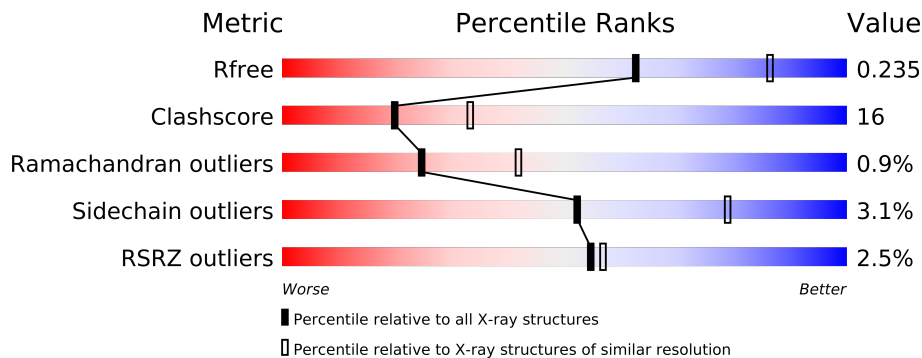
The following versions of software and data (see [references](#)) were used in the production of this report:

MolProbity : 4.02b-467
Mogul : 1.15 2013
Xtriage (Phenix) : dev-1323
EDS : stable22639
Percentile statistics : 21963
Refmac : 5.8.0049
CCP4 : 6.3.0 (Settle)
Ideal geometry (proteins) : Engh & Huber (2001)
Ideal geometry (DNA, RNA) : Parkinson et. al. (1996)
Validation Pipeline (wwPDB-VP) : stable22683

1 Overall quality at a glance

The reported resolution of this entry is 2.50 Å.

Percentile scores (ranging between 0-100) for global validation metrics of the entry are shown in the following graphic. The table shows the number of entries on which the scores are based.



Metric	Whole archive (#Entries)	Similar resolution (#Entries, resolution range(Å))
R_{free}	66092	2784 (2.50-2.50)
Clashscore	79885	3562 (2.50-2.50)
Ramachandran outliers	78287	3480 (2.50-2.50)
Sidechain outliers	78261	3482 (2.50-2.50)
RSRZ outliers	66119	2785 (2.50-2.50)

The table below summarises the geometric issues observed across the polymeric chains and their fit to the electron density. The red, orange, yellow and green segments on the lower bar indicate the fraction of residues that contain outliers for ≥ 3 , 2, 1 and 0 types of geometric quality criteria. The upper red bar (where present) indicates the fraction of residues that have poor fit to the electron density.

Mol	Chain	Length	Quality of chain
1	A	546	
1	B	546	
1	C	546	
1	D	546	
1	E	546	
1	F	546	

2 Entry composition

There are 3 unique types of molecules in this entry. The entry contains 26599 atoms, of which 0 are hydrogen and 0 are deuterium.

In the tables below, the ZeroOcc column contains the number of atoms modelled with zero occupancy, the AltConf column contains the number of residues with at least one atom in alternate conformation and the Trace column contains the number of residues modelled with at most 2 atoms.

- Molecule 1 is a protein called L-aspartate beta-decarboxylase.

Mol	Chain	Residues	Atoms					ZeroOcc	AltConf	Trace
1	A	510	Total	C	N	O	S	0	0	0
			4011	2553	684	757	17			
1	B	515	Total	C	N	O	S	0	0	0
			4054	2579	691	767	17			
1	C	516	Total	C	N	O	S	0	0	0
			4065	2588	692	768	17			
1	D	514	Total	C	N	O	S	0	0	0
			4042	2571	692	762	17			
1	E	512	Total	C	N	O	S	0	0	0
			4028	2563	687	761	17			
1	F	523	Total	C	N	O	S	0	0	0
			4116	2620	701	778	17			

There are 78 discrepancies between the modelled and reference sequences:

Chain	Residue	Modelled	Actual	Comment	Reference
A	534	LYS	-	EXPRESSION TAG	UNP Q93QX0
A	535	LEU	-	EXPRESSION TAG	UNP Q93QX0
A	536	ALA	-	EXPRESSION TAG	UNP Q93QX0
A	537	ALA	-	EXPRESSION TAG	UNP Q93QX0
A	538	ALA	-	EXPRESSION TAG	UNP Q93QX0
A	539	LEU	-	EXPRESSION TAG	UNP Q93QX0
A	540	GLU	-	EXPRESSION TAG	UNP Q93QX0
A	541	HIS	-	EXPRESSION TAG	UNP Q93QX0
A	542	HIS	-	EXPRESSION TAG	UNP Q93QX0
A	543	HIS	-	EXPRESSION TAG	UNP Q93QX0
A	544	HIS	-	EXPRESSION TAG	UNP Q93QX0
A	545	HIS	-	EXPRESSION TAG	UNP Q93QX0
A	546	HIS	-	EXPRESSION TAG	UNP Q93QX0
B	534	LYS	-	EXPRESSION TAG	UNP Q93QX0
B	535	LEU	-	EXPRESSION TAG	UNP Q93QX0
B	536	ALA	-	EXPRESSION TAG	UNP Q93QX0
B	537	ALA	-	EXPRESSION TAG	UNP Q93QX0

Continued on next page...

Continued from previous page...

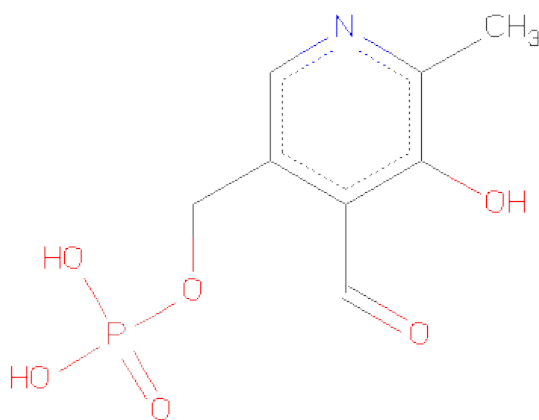
Chain	Residue	Modelled	Actual	Comment	Reference
B	538	ALA	-	EXPRESSION TAG	UNP Q93QX0
B	539	LEU	-	EXPRESSION TAG	UNP Q93QX0
B	540	GLU	-	EXPRESSION TAG	UNP Q93QX0
B	541	HIS	-	EXPRESSION TAG	UNP Q93QX0
B	542	HIS	-	EXPRESSION TAG	UNP Q93QX0
B	543	HIS	-	EXPRESSION TAG	UNP Q93QX0
B	544	HIS	-	EXPRESSION TAG	UNP Q93QX0
B	545	HIS	-	EXPRESSION TAG	UNP Q93QX0
B	546	HIS	-	EXPRESSION TAG	UNP Q93QX0
C	534	LYS	-	EXPRESSION TAG	UNP Q93QX0
C	535	LEU	-	EXPRESSION TAG	UNP Q93QX0
C	536	ALA	-	EXPRESSION TAG	UNP Q93QX0
C	537	ALA	-	EXPRESSION TAG	UNP Q93QX0
C	538	ALA	-	EXPRESSION TAG	UNP Q93QX0
C	539	LEU	-	EXPRESSION TAG	UNP Q93QX0
C	540	GLU	-	EXPRESSION TAG	UNP Q93QX0
C	541	HIS	-	EXPRESSION TAG	UNP Q93QX0
C	542	HIS	-	EXPRESSION TAG	UNP Q93QX0
C	543	HIS	-	EXPRESSION TAG	UNP Q93QX0
C	544	HIS	-	EXPRESSION TAG	UNP Q93QX0
C	545	HIS	-	EXPRESSION TAG	UNP Q93QX0
C	546	HIS	-	EXPRESSION TAG	UNP Q93QX0
D	534	LYS	-	EXPRESSION TAG	UNP Q93QX0
D	535	LEU	-	EXPRESSION TAG	UNP Q93QX0
D	536	ALA	-	EXPRESSION TAG	UNP Q93QX0
D	537	ALA	-	EXPRESSION TAG	UNP Q93QX0
D	538	ALA	-	EXPRESSION TAG	UNP Q93QX0
D	539	LEU	-	EXPRESSION TAG	UNP Q93QX0
D	540	GLU	-	EXPRESSION TAG	UNP Q93QX0
D	541	HIS	-	EXPRESSION TAG	UNP Q93QX0
D	542	HIS	-	EXPRESSION TAG	UNP Q93QX0
D	543	HIS	-	EXPRESSION TAG	UNP Q93QX0
D	544	HIS	-	EXPRESSION TAG	UNP Q93QX0
D	545	HIS	-	EXPRESSION TAG	UNP Q93QX0
D	546	HIS	-	EXPRESSION TAG	UNP Q93QX0
E	534	LYS	-	EXPRESSION TAG	UNP Q93QX0
E	535	LEU	-	EXPRESSION TAG	UNP Q93QX0
E	536	ALA	-	EXPRESSION TAG	UNP Q93QX0
E	537	ALA	-	EXPRESSION TAG	UNP Q93QX0
E	538	ALA	-	EXPRESSION TAG	UNP Q93QX0
E	539	LEU	-	EXPRESSION TAG	UNP Q93QX0
E	540	GLU	-	EXPRESSION TAG	UNP Q93QX0

Continued on next page...

Continued from previous page...

Chain	Residue	Modelled	Actual	Comment	Reference
E	541	HIS	-	EXPRESSION TAG	UNP Q93QX0
E	542	HIS	-	EXPRESSION TAG	UNP Q93QX0
E	543	HIS	-	EXPRESSION TAG	UNP Q93QX0
E	544	HIS	-	EXPRESSION TAG	UNP Q93QX0
E	545	HIS	-	EXPRESSION TAG	UNP Q93QX0
E	546	HIS	-	EXPRESSION TAG	UNP Q93QX0
F	534	LYS	-	EXPRESSION TAG	UNP Q93QX0
F	535	LEU	-	EXPRESSION TAG	UNP Q93QX0
F	536	ALA	-	EXPRESSION TAG	UNP Q93QX0
F	537	ALA	-	EXPRESSION TAG	UNP Q93QX0
F	538	ALA	-	EXPRESSION TAG	UNP Q93QX0
F	539	LEU	-	EXPRESSION TAG	UNP Q93QX0
F	540	GLU	-	EXPRESSION TAG	UNP Q93QX0
F	541	HIS	-	EXPRESSION TAG	UNP Q93QX0
F	542	HIS	-	EXPRESSION TAG	UNP Q93QX0
F	543	HIS	-	EXPRESSION TAG	UNP Q93QX0
F	544	HIS	-	EXPRESSION TAG	UNP Q93QX0
F	545	HIS	-	EXPRESSION TAG	UNP Q93QX0
F	546	HIS	-	EXPRESSION TAG	UNP Q93QX0

- Molecule 2 is PYRIDOXAL-5'-PHOSPHATE (three-letter code: PLP) (formula: C₈H₁₀NO₆P).



Mol	Chain	Residues	Atoms					ZeroOcc	AltConf
2	A	1	Total	C	N	O	P	0	0
			15	8	1	5	1		
2	B	1	Total	C	N	O	P	0	0
			15	8	1	5	1		

Continued on next page...

Continued from previous page...

Mol	Chain	Residues	Atoms					ZeroOcc	AltConf
2	C	1	Total	C	N	O	P	0	0
			15	8	1	5	1		
2	D	1	Total	C	N	O	P	0	0
			15	8	1	5	1		
2	E	1	Total	C	N	O	P	0	0
			15	8	1	5	1		
2	F	1	Total	C	N	O	P	0	0
			15	8	1	5	1		

- Molecule 3 is water.

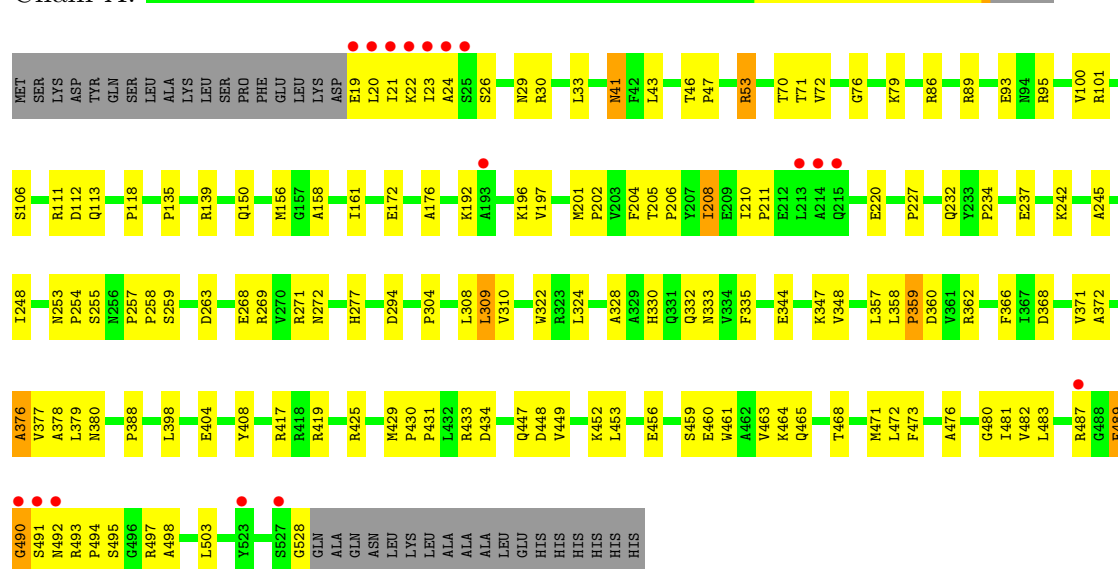
Mol	Chain	Residues	Atoms		ZeroOcc	AltConf
3	A	369	Total	O	0	0
			369	369		
3	B	431	Total	O	0	0
			431	431		
3	C	403	Total	O	0	0
			403	403		
3	D	353	Total	O	0	0
			353	353		
3	E	329	Total	O	0	0
			329	329		
3	F	308	Total	O	0	0
			308	308		

3 Residue-property plots

These plots are drawn for all protein, RNA and DNA chains in the entry. The first graphic for a chain summarises the proportions of errors displayed in the second graphic. The second graphic shows the sequence view annotated by issues in geometry and electron density. Residues are color-coded according to the number of geometric quality criteria for which they contain at least one outlier: green = 0, yellow = 1, orange = 2 and red = 3 or more. A red dot above a residue indicates a poor fit to the electron density ($RSRZ > 2$). Stretches of 2 or more consecutive residues without any outlier are shown as a green connector. Residues present in the sample, but not in the model, are shown in grey.

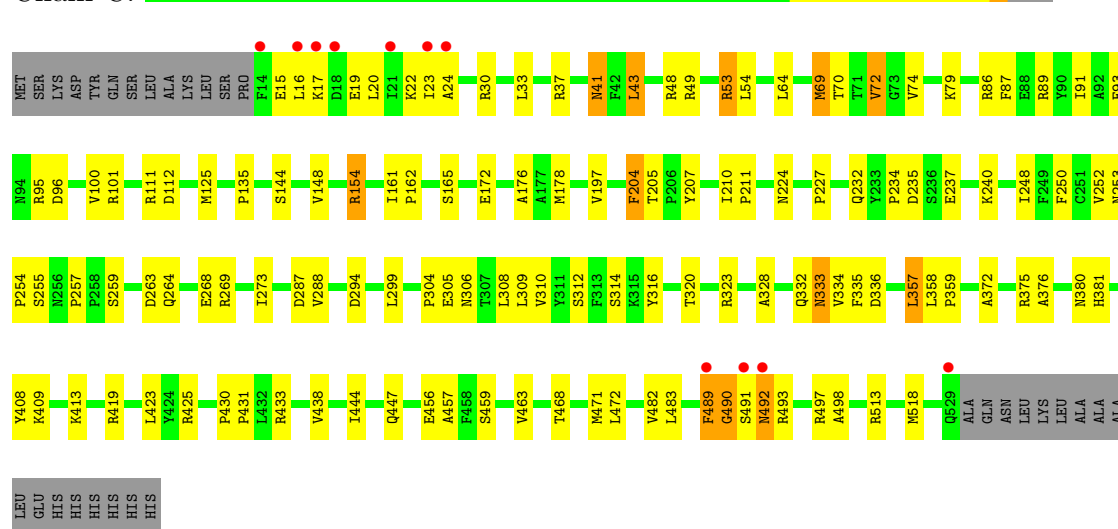
• Molecule 1: L-aspartate beta-decarboxylase

Chain A:



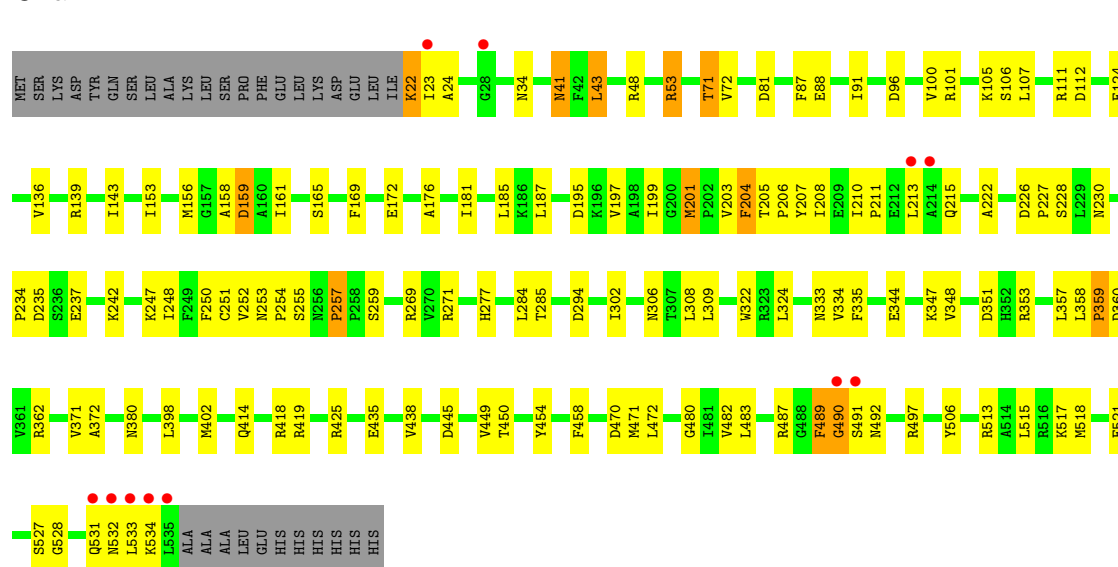
- Molecule 1: L-aspartate beta-decarboxylase

Chain C:



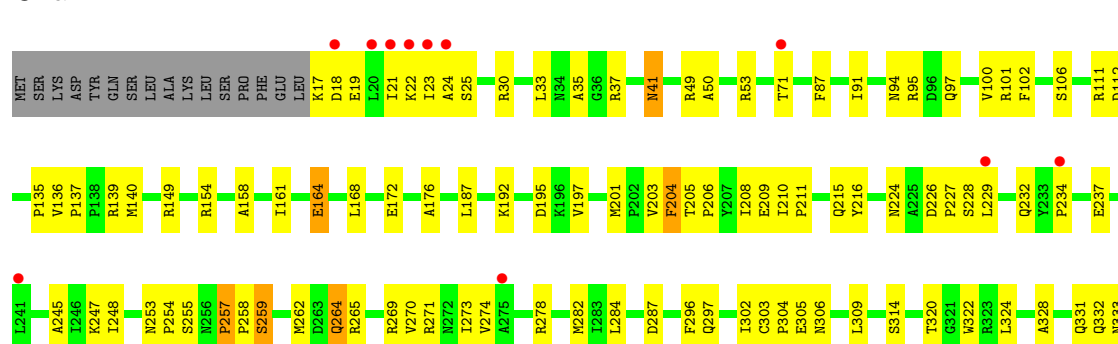
- Molecule 1: L-aspartate beta-decarboxylase

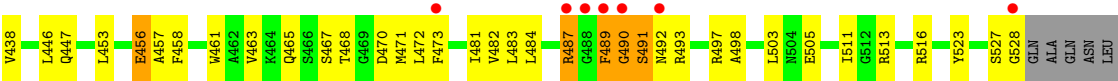
Chain D:



- Molecule 1: L-aspartate beta-decarboxylase

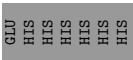
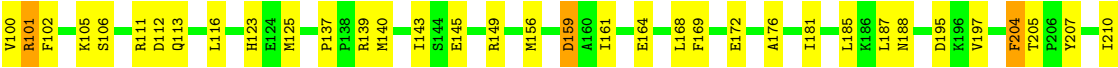
Chain E:





● Molecule 1: L-aspartate beta-decarboxylase

Chain F:



4 Data and refinement statistics

Property	Value	Source
Space group	C 2 2 21	Depositor
Cell constants a, b, c, α , β , γ	149.73Å 216.14Å 208.73Å 90.00° 90.00° 90.00°	Depositor
Resolution (Å)	50.00 – 2.50 44.08 – 2.50	Depositor EDS
% Data completeness (in resolution range)	92.8 (50.00-2.50) 92.6 (44.08-2.50)	Depositor EDS
R_{merge}	0.12	Depositor
R_{sym}	(Not available)	Depositor
$\langle I/\sigma(I) \rangle$ ¹	3.42 (at 2.51Å)	Xtriage
Refinement program	CNS 1.1	Depositor
R, R_{free}	0.175 , 0.234 0.175 , 0.235	Depositor DCC
R_{free} test set	5435 reflections (5.03%)	DCC
Wilson B-factor (Å ²)	31.1	Xtriage
Anisotropy	0.318	Xtriage
Bulk solvent k_{sol} (e/Å ³), B_{sol} (Å ²)	0.31 , 35.4	EDS
Estimated twinning fraction	No twinning to report.	Xtriage
L-test for twinning	$\langle L \rangle = 0.49$, $\langle L^2 \rangle = 0.33$	Xtriage
Outliers	0 of 108207 reflections	Xtriage
F_o, F_c correlation	0.95	EDS
Total number of atoms	26599	wwPDB-VP
Average B, all atoms (Å ²)	38.0	wwPDB-VP

Xtriage's analysis on translational NCS is as follows: *The largest off-origin peak in the Patterson function is 2.73% of the height of the origin peak. No significant pseudotranslation is detected.*

¹Intensities estimated from amplitudes.

5 Model quality ⓘ

5.1 Standard geometry ⓘ

Bond lengths and bond angles in the following residue types are not validated in this section: PLP

The Z score for a bond length (or angle) is the number of standard deviations the observed value is removed from the expected value. A bond length (or angle) with $|Z| > 5$ is considered an outlier worth inspection. RMSZ is the root-mean-square of all Z scores of the bond lengths (or angles).

Mol	Chain	Bond lengths		Bond angles	
		RMSZ	# Z >5	RMSZ	# Z >5
1	A	0.56	0/4093	0.71	0/5543
1	B	0.56	0/4136	0.72	0/5600
1	C	0.56	0/4148	0.73	1/5616 (0.0%)
1	D	0.54	0/4124	0.71	1/5584 (0.0%)
1	E	0.53	0/4110	0.70	1/5565 (0.0%)
1	F	0.56	1/4200 (0.0%)	0.70	0/5688
All	All	0.55	1/24811 (0.0%)	0.71	3/33596 (0.0%)

All (1) bond length outliers are listed below:

Mol	Chain	Res	Type	Atoms	Z	Observed(Å)	Ideal(Å)
1	F	315	LYS	CE-NZ	-5.25	1.35	1.49

All (3) bond angle outliers are listed below:

Mol	Chain	Res	Type	Atoms	Z	Observed(°)	Ideal(°)
1	D	257	PRO	N-CA-C	6.18	128.18	112.10
1	C	257	PRO	N-CA-C	5.78	127.12	112.10
1	E	257	PRO	N-CA-C	5.13	125.45	112.10

There are no chirality outliers.

There are no planarity outliers.

5.2 Close contacts ⓘ

In the following table, the Non-H and H(model) columns list the number of non-hydrogen atoms and hydrogen atoms in the chain respectively. The H(added) column lists the number of hydrogens added by MolProbity. The Clashes column lists the number of clashes within the asymmetric unit, and the number in parentheses is this value normalized per 1000 atoms of the molecule in the

chain. The Symm-Clashes column gives symmetry related clashes, in the same way as for the Clashes column.

Mol	Chain	Non-H	H(model)	H(added)	Clashes	Symm-Clashes
1	A	4011	0	3978	126	0
1	B	4054	0	4021	140	0
1	C	4065	0	4029	104	1
1	D	4042	0	4013	128	0
1	E	4028	0	3996	146	0
1	F	4116	0	4082	162	0
2	A	15	0	7	0	0
2	B	15	0	7	1	0
2	C	15	0	7	0	0
2	D	15	0	7	0	0
2	E	15	0	7	0	0
2	F	15	0	6	0	0
3	A	369	0	0	12	0
3	B	431	0	0	15	0
3	C	403	0	0	10	0
3	D	353	0	0	14	0
3	E	329	0	0	16	1
3	F	308	0	0	18	0
All	All	26599	0	24160	776	1

Clashscore is defined as the number of clashes calculated for the entry per 1000 atoms (including hydrogens) of the entry. The overall clashscore for this entry is 16.

All (776) close contacts within the same asymmetric unit are listed below.

Atom-1	Atom-2	Distance(Å)	Clash(Å)
1:D:105:LYS:HE3	3:D:1343:HOH:O	1.46	1.13
1:E:447:GLN:HE21	1:E:463:VAL:HG21	1.14	1.10
1:B:425:ARG:HH12	1:D:159:ASP:HA	1.21	1.02
1:F:530:ALA:O	1:F:533:LEU:HG	1.65	0.97
1:B:333:ASN:HD22	1:B:335:PHE:H	1.17	0.93
1:A:333:ASN:HD22	1:A:335:PHE:H	1.10	0.93
1:B:227:PRO:HG2	1:B:489:PHE:HB3	1.49	0.91
1:F:333:ASN:HD22	1:F:335:PHE:H	1.07	0.90
1:F:197:VAL:HG23	1:F:248:ILE:HG23	1.54	0.89
1:A:41:ASN:HD21	1:A:419:ARG:HH22	1.19	0.89
1:E:264:GLN:H	1:E:264:GLN:HE21	1.21	0.88
1:B:254:PRO:HG2	1:B:289:TYR:HB2	1.57	0.87
1:F:11:LEU:HG	3:F:1852:HOH:O	1.74	0.87
1:F:227:PRO:HG2	1:F:489:PHE:HB3	1.56	0.86
1:B:358:LEU:HB2	1:B:359:PRO:HD2	1.59	0.85

Continued on next page...

Continued from previous page...

Atom-1	Atom-2	Distance(Å)	Clash(Å)
1:D:425:ARG:HH22	1:F:159:ASP:HA	1.42	0.84
1:D:333:ASN:HD22	1:D:335:PHE:H	1.22	0.84
1:A:333:ASN:HD21	1:A:335:PHE:HB2	1.43	0.83
1:A:333:ASN:ND2	1:A:335:PHE:H	1.77	0.83
1:E:41:ASN:HD21	1:E:419:ARG:HH22	1.26	0.83
1:B:158:ALA:HB1	1:B:161:ILE:HD13	1.59	0.83
1:D:227:PRO:HG2	1:D:489:PHE:HB3	1.60	0.83
1:E:447:GLN:HB3	1:E:493:ARG:HH21	1.44	0.82
1:C:89:ARG:NH1	1:C:93:GLU:HG3	1.95	0.82
1:D:139:ARG:HG3	1:D:371:VAL:HG21	1.61	0.81
1:E:447:GLN:NE2	1:E:463:VAL:HG21	1.96	0.79
1:F:333:ASN:ND2	1:F:335:PHE:H	1.81	0.79
1:F:139:ARG:NH2	3:F:1966:HOH:O	2.16	0.78
1:A:72:VAL:HG11	1:B:408:TYR:HA	1.66	0.78
1:D:425:ARG:NH2	1:F:159:ASP:HA	1.98	0.78
1:E:106:SER:HB2	1:E:398:LEU:HD13	1.66	0.78
1:A:358:LEU:HB2	1:A:359:PRO:HD2	1.67	0.77
1:A:205:THR:HB	1:A:206:PRO:HD3	1.66	0.77
1:D:197:VAL:HG23	1:D:248:ILE:HG23	1.66	0.77
1:E:227:PRO:HG2	1:E:489:PHE:HB3	1.67	0.77
1:C:64:LEU:HD22	3:F:953:HOH:O	1.84	0.77
1:E:257:PRO:HB2	1:E:497:ARG:HD3	1.66	0.76
1:E:234:PRO:HG2	1:E:237:GLU:HB2	1.67	0.76
1:C:268:GLU:HB2	3:C:1218:HOH:O	1.85	0.76
1:A:70:THR:HG22	1:A:72:VAL:H	1.50	0.76
1:A:242:LYS:HE2	1:A:277:HIS:CD2	2.21	0.75
1:B:425:ARG:NH1	1:D:159:ASP:HA	2.01	0.75
1:C:227:PRO:HG2	1:C:489:PHE:HB3	1.67	0.75
1:E:17:LYS:HG3	3:E:1573:HOH:O	1.87	0.75
1:E:297:GLN:NE2	1:E:302:ILE:HD11	2.02	0.74
1:B:205:THR:HB	1:B:206:PRO:HD3	1.68	0.74
1:F:306:ASN:ND2	1:F:334:VAL:HG11	2.02	0.73
1:A:172:GLU:HG2	1:A:176:ALA:HB2	1.71	0.73
1:B:257:PRO:HB2	1:B:497:ARG:HD3	1.69	0.73
1:B:33:LEU:HD11	1:B:482:VAL:HG11	1.70	0.73
1:E:358:LEU:HB2	1:E:359:PRO:HD2	1.71	0.73
1:F:226:ASP:OD2	1:F:229:LEU:HG	1.89	0.73
1:D:344:GLU:O	1:D:348:VAL:HG23	1.89	0.72
1:D:96:ASP:HB3	3:D:1342:HOH:O	1.90	0.72
1:E:197:VAL:HG23	1:E:248:ILE:HG23	1.72	0.72
1:F:333:ASN:HD22	1:F:335:PHE:N	1.86	0.72
1:D:358:LEU:HB2	1:D:359:PRO:HD2	1.72	0.71

Continued on next page...

Continued from previous page...

Atom-1	Atom-2	Distance(Å)	Clash(Å)
1:C:53:ARG:HG2	1:C:100:VAL:HG23	1.71	0.71
1:E:456:GLU:H	1:E:456:GLU:CD	1.93	0.71
1:B:26:SER:O	1:B:30:ARG:HG3	1.91	0.71
1:C:408:TYR:HA	1:D:72:VAL:HG11	1.71	0.71
1:B:15:GLU:HB3	3:B:894:HOH:O	1.90	0.70
1:F:93:GLU:O	1:F:93:GLU:HG3	1.90	0.70
1:E:333:ASN:ND2	1:E:335:PHE:HB2	2.05	0.70
1:F:358:LEU:HB2	1:F:359:PRO:HD2	1.71	0.70
1:F:101:ARG:HG2	1:F:101:ARG:HH11	1.56	0.70
1:D:234:PRO:HG2	1:D:237:GLU:HB2	1.74	0.70
1:A:372:ALA:HA	1:A:380:ASN:HD22	1.57	0.70
1:C:19:GLU:O	1:C:23:ILE:HD12	1.92	0.70
1:A:333:ASN:ND2	1:A:335:PHE:HB2	2.05	0.70
1:F:187:LEU:HD13	1:F:353:ARG:NH2	2.07	0.70
1:C:33:LEU:HD11	1:C:482:VAL:HG11	1.72	0.70
1:B:333:ASN:HD22	1:B:335:PHE:N	1.88	0.69
1:E:461:TRP:HB2	3:E:1826:HOH:O	1.92	0.69
1:C:372:ALA:HA	1:C:380:ASN:HD22	1.56	0.69
1:A:227:PRO:HG2	1:A:489:PHE:HB3	1.72	0.69
1:B:84:GLU:O	1:B:88:GLU:HG3	1.93	0.69
1:D:172:GLU:HG2	1:D:176:ALA:HB2	1.73	0.69
1:D:372:ALA:HA	1:D:380:ASN:HD22	1.58	0.69
1:E:513:ARG:HD3	3:E:560:HOH:O	1.92	0.69
1:A:139:ARG:HG3	1:A:371:VAL:HG21	1.75	0.69
1:F:490:GLY:O	1:F:492:ASN:N	2.25	0.68
1:E:158:ALA:HB1	1:E:161:ILE:HD12	1.75	0.68
1:A:448:ASP:O	1:A:452:LYS:HG3	1.93	0.68
1:D:306:ASN:HA	1:D:334:VAL:HG22	1.73	0.68
1:C:70:THR:HG22	1:C:72:VAL:H	1.59	0.67
1:D:23:ILE:HD12	1:D:23:ILE:H	1.59	0.67
1:C:234:PRO:HG2	1:C:237:GLU:HB2	1.77	0.67
1:A:41:ASN:HD21	1:A:419:ARG:NH2	1.92	0.67
1:B:461:TRP:O	1:B:465:GLN:HG2	1.94	0.67
1:D:139:ARG:HG3	1:D:371:VAL:CG2	2.24	0.67
1:A:257:PRO:HB2	1:A:497:ARG:HD2	1.77	0.67
1:D:418:ARG:HD3	1:F:404:GLU:OE1	1.94	0.67
1:F:353:ARG:HH11	1:F:353:ARG:HG3	1.61	0.66
1:C:41:ASN:HD21	1:C:419:ARG:HH12	1.43	0.66
1:F:41:ASN:HD21	1:F:419:ARG:HH22	1.42	0.66
1:A:490:GLY:O	1:A:492:ASN:N	2.28	0.66
1:C:19:GLU:O	1:C:22:LYS:HB3	1.96	0.66
1:D:294:ASP:O	3:D:1372:HOH:O	2.13	0.66

Continued on next page...

Continued from previous page...

Atom-1	Atom-2	Distance(Å)	Clash(Å)
1:E:353:ARG:HG3	1:E:353:ARG:HH11	1.60	0.66
1:A:41:ASN:ND2	1:A:419:ARG:HH22	1.93	0.65
1:A:294:ASP:O	3:A:795:HOH:O	2.14	0.65
1:F:282:MET:HE2	1:F:335:PHE:CE2	2.32	0.65
1:A:24:ALA:HB3	1:A:482:VAL:HG23	1.76	0.65
1:F:24:ALA:HB3	1:F:482:VAL:HG23	1.78	0.65
1:E:446:LEU:HB2	1:E:471:MET:CE	2.28	0.65
1:F:111:ARG:HD2	1:F:112:ASP:OD1	1.97	0.65
1:E:528:GLY:C	3:E:1841:HOH:O	2.34	0.64
1:A:21:ILE:HG23	1:A:22:LYS:N	2.12	0.64
1:B:490:GLY:O	1:B:492:ASN:N	2.31	0.64
1:B:24:ALA:HB3	1:B:482:VAL:HG23	1.80	0.64
1:E:33:LEU:HD11	1:E:482:VAL:HG11	1.79	0.63
1:C:333:ASN:HD22	1:C:335:PHE:H	1.43	0.63
1:A:135:PRO:HD2	3:A:671:HOH:O	1.97	0.63
1:C:210:ILE:HB	1:C:211:PRO:HD3	1.81	0.63
1:E:446:LEU:HB2	1:E:471:MET:HE3	1.81	0.63
1:A:53:ARG:HG2	1:A:100:VAL:CG2	2.29	0.63
1:A:234:PRO:HG2	1:A:237:GLU:HB2	1.80	0.63
1:E:333:ASN:HD22	1:E:335:PHE:H	1.46	0.63
1:A:197:VAL:HG23	1:A:248:ILE:HG23	1.81	0.63
1:F:282:MET:HE2	1:F:335:PHE:HE2	1.63	0.62
1:B:474:ARG:HG2	1:B:518:MET:HE2	1.82	0.62
1:C:89:ARG:HH12	1:C:93:GLU:HG3	1.63	0.62
1:C:489:PHE:CE2	1:C:493:ARG:HD3	2.34	0.62
1:B:197:VAL:HG21	1:B:218:LEU:HD13	1.81	0.62
1:F:195:ASP:OD1	1:F:247:LYS:HD2	2.00	0.62
1:A:29:ASN:O	1:A:33:LEU:HG	1.98	0.62
1:B:15:GLU:HA	3:B:886:HOH:O	1.98	0.62
1:E:362:ARG:HG3	1:E:362:ARG:HH11	1.64	0.62
1:E:232:GLN:HE21	1:E:232:GLN:HA	1.65	0.62
1:A:232:GLN:HE22	1:A:263:ASP:H	1.48	0.62
1:C:456:GLU:O	1:C:459:SER:HB3	2.00	0.62
1:A:53:ARG:HG2	1:A:100:VAL:HG23	1.80	0.62
1:C:15:GLU:C	1:C:17:LYS:H	2.02	0.62
1:E:30:ARG:HG2	1:E:30:ARG:HH11	1.64	0.62
1:C:87:PHE:O	1:C:91:ILE:HG12	2.00	0.61
1:C:333:ASN:ND2	1:C:336:ASP:H	1.98	0.61
1:B:23:ILE:HD13	1:B:473:PHE:CD1	2.35	0.61
1:C:333:ASN:HD22	1:C:335:PHE:N	1.97	0.61
1:C:490:GLY:O	1:C:492:ASN:N	2.33	0.61
1:C:172:GLU:HG2	1:C:176:ALA:HB2	1.81	0.61

Continued on next page...

Continued from previous page...

Atom-1	Atom-2	Distance(Å)	Clash(Å)
1:B:106:SER:HB2	1:B:398:LEU:HD13	1.82	0.61
1:A:24:ALA:HB3	1:A:482:VAL:CG2	2.31	0.61
1:B:483:LEU:HD22	1:B:498:ALA:HB2	1.82	0.61
1:B:446:LEU:HD13	1:B:471:MET:HE3	1.83	0.61
1:D:471:MET:HG3	1:D:518:MET:HE1	1.83	0.61
1:A:333:ASN:ND2	1:A:335:PHE:N	2.49	0.61
1:C:447:GLN:HB3	1:C:493:ARG:HH21	1.66	0.61
1:E:17:LYS:HD2	3:E:1572:HOH:O	2.00	0.61
1:D:210:ILE:N	1:D:211:PRO:HD2	2.16	0.61
1:E:271:ARG:HG2	1:E:271:ARG:HH11	1.66	0.60
1:E:172:GLU:HG2	1:E:176:ALA:HB2	1.82	0.60
1:B:333:ASN:ND2	1:B:335:PHE:H	1.94	0.60
1:D:210:ILE:O	1:D:213:LEU:HB2	2.01	0.60
1:D:213:LEU:HD13	1:D:215:GLN:OE1	2.02	0.60
1:F:387:THR:OG1	1:F:388:PRO:HD3	2.01	0.60
1:D:470:ASP:HB2	3:D:1523:HOH:O	2.02	0.60
1:D:490:GLY:O	1:D:492:ASN:N	2.34	0.60
1:E:232:GLN:NE2	1:E:232:GLN:HA	2.17	0.60
1:E:41:ASN:HD21	1:E:419:ARG:NH2	1.99	0.60
1:C:224:ASN:O	1:C:237:GLU:HG2	2.02	0.60
1:A:447:GLN:HB2	1:A:463:VAL:CG2	2.32	0.60
1:E:481:ILE:HD13	1:E:503:LEU:HD13	1.84	0.60
1:B:135:PRO:HD2	3:B:779:HOH:O	2.01	0.60
1:B:355:ARG:HG2	1:B:355:ARG:HH11	1.66	0.60
1:F:24:ALA:HB3	1:F:482:VAL:CG2	2.31	0.59
1:B:21:ILE:HG12	1:B:33:LEU:HD12	1.84	0.59
1:B:404:GLU:OE1	1:F:418:ARG:HD2	2.02	0.59
1:F:412:LEU:O	1:F:416:ILE:HG12	2.03	0.59
1:D:333:ASN:HD22	1:D:335:PHE:N	1.99	0.59
1:D:358:LEU:H	1:D:358:LEU:HD23	1.68	0.59
1:E:461:TRP:O	1:E:465:GLN:HG2	2.03	0.59
1:A:156:MET:HG3	1:A:309:LEU:HD11	1.84	0.59
1:D:513:ARG:HD2	3:D:1534:HOH:O	2.03	0.59
1:F:492:ASN:ND2	3:F:2011:HOH:O	2.32	0.59
1:F:41:ASN:HD21	1:F:419:ARG:HH12	1.49	0.59
1:E:352:HIS:O	1:E:355:ARG:HG2	2.02	0.59
1:B:172:GLU:CD	1:B:172:GLU:H	2.05	0.58
1:C:255:SER:O	1:C:259:SER:HA	2.01	0.58
1:B:187:LEU:HD13	1:B:353:ARG:NH2	2.18	0.58
1:C:154:ARG:NH2	3:C:1108:HOH:O	2.35	0.58
1:C:381:HIS:ND1	1:D:34:ASN:HB3	2.18	0.58
1:E:461:TRP:CB	3:E:1826:HOH:O	2.48	0.58

Continued on next page...

Continued from previous page...

Atom-1	Atom-2	Distance(Å)	Clash(Å)
1:E:94:ASN:HB3	1:E:97:GLN:OE1	2.02	0.58
1:B:41:ASN:HD21	1:B:419:ARG:HH12	1.50	0.58
1:A:472:LEU:HD22	1:A:483:LEU:HB2	1.85	0.58
1:B:353:ARG:NH1	3:B:881:HOH:O	2.36	0.58
1:C:253:ASN:HA	1:C:254:PRO:C	2.24	0.58
1:C:204:PHE:HE2	1:C:207:TYR:CG	2.22	0.58
1:F:35:ALA:HB1	1:F:37:ARG:HH11	1.68	0.58
1:D:199:ILE:O	1:D:201:MET:HG2	2.04	0.58
1:C:513:ARG:HD3	3:C:1283:HOH:O	2.02	0.58
1:D:271:ARG:NH1	1:D:302:ILE:O	2.37	0.58
1:D:205:THR:HB	1:D:206:PRO:CD	2.33	0.58
1:F:172:GLU:HG2	1:F:176:ALA:HB2	1.85	0.57
1:F:257:PRO:HB2	1:F:497:ARG:HD2	1.84	0.57
1:B:306:ASN:ND2	1:B:334:VAL:HG11	2.19	0.57
3:B:789:HOH:O	1:D:159:ASP:HA	2.05	0.57
1:F:333:ASN:ND2	1:F:335:PHE:N	2.50	0.57
1:F:489:PHE:N	1:F:489:PHE:HD1	2.03	0.57
1:B:41:ASN:HD21	1:B:419:ARG:HH22	1.53	0.57
1:A:106:SER:HB2	1:A:398:LEU:HD13	1.86	0.57
1:F:489:PHE:CD1	1:F:489:PHE:N	2.72	0.57
1:F:461:TRP:O	1:F:465:GLN:HG2	2.04	0.57
1:F:473:PHE:HE2	3:F:1875:HOH:O	1.86	0.57
1:E:487:ARG:HH11	1:E:487:ARG:HG3	1.70	0.57
1:B:425:ARG:NH2	1:D:153:ILE:CG2	2.68	0.57
1:A:447:GLN:HB2	1:A:463:VAL:HG21	1.85	0.57
1:D:106:SER:HB2	1:D:398:LEU:HD13	1.85	0.57
1:F:472:LEU:HD22	1:F:483:LEU:HB2	1.87	0.57
1:E:111:ARG:HD2	1:E:112:ASP:OD1	2.04	0.57
1:A:196:LYS:HD2	1:A:245:ALA:HB3	1.85	0.57
1:D:195:ASP:HB3	1:D:247:LYS:HG3	1.86	0.57
1:D:41:ASN:HD21	1:D:419:ARG:HH12	1.51	0.57
1:C:232:GLN:HE22	1:C:263:ASP:H	1.53	0.57
1:B:210:ILE:N	1:B:211:PRO:HD2	2.20	0.57
1:A:172:GLU:HG2	1:A:176:ALA:CB	2.34	0.57
1:D:235:ASP:OD1	1:D:269:ARG:HD3	2.05	0.57
1:F:59:ALA:O	1:F:63:GLU:HG3	2.05	0.56
1:D:172:GLU:H	1:D:172:GLU:CD	2.08	0.56
1:A:21:ILE:HG23	1:A:22:LYS:HG3	1.87	0.56
1:C:23:ILE:HD13	3:C:853:HOH:O	2.04	0.56
1:D:101:ARG:HD3	3:D:557:HOH:O	2.04	0.56
1:F:270:VAL:O	1:F:274:VAL:HG23	2.05	0.56
1:E:334:VAL:HA	1:E:337:LEU:HD12	1.88	0.56

Continued on next page...

Continued from previous page...

Atom-1	Atom-2	Distance(Å)	Clash(Å)
1:B:98:GLU:HB2	3:B:834:HOH:O	2.05	0.56
1:A:20:LEU:HD12	1:A:23:ILE:HG21	1.88	0.56
1:C:235:ASP:OD1	1:C:269:ARG:HD3	2.06	0.56
1:F:452:LYS:HE2	3:F:2002:HOH:O	2.04	0.56
1:C:197:VAL:HG23	1:C:248:ILE:HG23	1.88	0.56
1:A:86:ARG:HD3	1:D:88:GLU:OE1	2.06	0.55
1:A:21:ILE:HG23	1:A:22:LYS:H	1.69	0.55
1:D:24:ALA:HB3	1:D:482:VAL:CG2	2.36	0.55
1:E:226:ASP:OD2	1:E:229:LEU:HG	2.07	0.55
1:D:333:ASN:HD21	1:D:335:PHE:HB2	1.72	0.55
1:E:41:ASN:ND2	1:E:419:ARG:HH22	1.99	0.55
1:E:248:ILE:HD11	1:E:284:LEU:HB2	1.88	0.55
1:C:306:ASN:ND2	1:C:334:VAL:HG11	2.22	0.55
1:D:347:LYS:HD2	1:D:362:ARG:NH1	2.22	0.55
1:A:253:ASN:HA	1:A:254:PRO:C	2.26	0.55
1:F:474:ARG:O	1:F:478:GLU:HG3	2.07	0.55
1:E:490:GLY:O	1:E:492:ASN:N	2.40	0.55
1:D:172:GLU:HG2	1:D:176:ALA:CB	2.37	0.55
1:C:86:ARG:HD3	1:F:88:GLU:OE1	2.07	0.55
1:E:483:LEU:HD22	1:E:498:ALA:HB2	1.88	0.55
1:D:414:GLN:NE2	3:D:1004:HOH:O	2.38	0.55
1:E:309:LEU:HB3	1:E:328:ALA:HB3	1.89	0.55
1:D:187:LEU:HD13	1:D:353:ARG:NH2	2.22	0.55
1:B:139:ARG:NH2	3:B:589:HOH:O	2.39	0.54
1:A:332:GLN:HG3	3:A:703:HOH:O	2.06	0.54
1:F:375:ARG:NE	3:F:2197:HOH:O	2.38	0.54
1:C:111:ARG:HD2	1:C:112:ASP:OD1	2.07	0.54
1:D:306:ASN:HA	1:D:334:VAL:CG2	2.38	0.54
1:B:53:ARG:HG2	1:B:100:VAL:CG2	2.36	0.54
1:F:330:HIS:CE1	1:F:332:GLN:HG2	2.42	0.54
1:F:172:GLU:H	1:F:172:GLU:CD	2.10	0.54
1:B:18:ASP:O	1:B:22:LYS:HG2	2.08	0.54
1:F:20:LEU:HB3	1:F:482:VAL:HG11	1.89	0.54
1:A:101:ARG:NH2	3:A:653:HOH:O	2.38	0.54
1:B:53:ARG:HG2	1:B:100:VAL:HG23	1.89	0.54
1:C:178:MET:HE2	1:C:310:VAL:HG11	1.90	0.54
1:D:358:LEU:N	1:D:358:LEU:HD23	2.22	0.54
1:E:468:THR:O	1:E:472:LEU:HG	2.07	0.54
1:D:322:TRP:HB3	1:D:324:LEU:HG	1.90	0.54
1:E:19:GLU:HA	1:E:22:LYS:HD2	1.90	0.54
1:A:489:PHE:N	1:A:489:PHE:CD2	2.73	0.54
1:F:239:ASP:OD2	1:F:269:ARG:NH2	2.37	0.54

Continued on next page...

Continued from previous page...

Atom-1	Atom-2	Distance(Å)	Clash(Å)
1:B:232:GLN:HE22	1:B:263:ASP:H	1.55	0.54
1:B:513:ARG:HD3	3:B:826:HOH:O	2.06	0.54
1:B:425:ARG:HH12	1:D:159:ASP:CA	2.09	0.54
1:D:169:PHE:CE1	1:D:371:VAL:HG22	2.42	0.54
1:E:513:ARG:HH11	1:E:513:ARG:HG3	1.73	0.54
1:F:254:PRO:HB3	1:F:438:VAL:HG21	1.88	0.54
1:E:232:GLN:HE21	1:E:232:GLN:CA	2.20	0.53
1:D:515:LEU:CD1	1:D:518:MET:HE1	2.39	0.53
1:E:53:ARG:HD3	1:E:100:VAL:HG23	1.89	0.53
1:F:210:ILE:N	1:F:211:PRO:HD2	2.23	0.53
1:E:255:SER:O	1:E:259:SER:HA	2.08	0.53
1:B:490:GLY:C	1:B:492:ASN:H	2.12	0.53
1:D:205:THR:HB	1:D:206:PRO:HD3	1.90	0.53
1:B:237:GLU:OE2	1:B:240:LYS:HE3	2.08	0.53
1:F:232:GLN:HE22	1:F:262:MET:HA	1.71	0.53
1:C:20:LEU:HD13	1:C:482:VAL:HG13	1.89	0.53
1:A:19:GLU:O	1:A:23:ILE:HB	2.09	0.53
1:A:417:ARG:HD2	1:A:433:ARG:NH2	2.22	0.53
1:C:447:GLN:HE21	1:C:463:VAL:HG21	1.74	0.53
1:A:23:ILE:CD1	1:A:473:PHE:CE1	2.91	0.53
1:E:226:ASP:OD2	1:E:228:SER:HB3	2.09	0.53
1:A:158:ALA:HB1	1:A:161:ILE:HD12	1.91	0.53
1:B:320:THR:O	1:B:323:ARG:HD2	2.09	0.53
1:F:234:PRO:HG2	1:F:237:GLU:HB2	1.90	0.53
1:F:333:ASN:HD21	1:F:335:PHE:HB2	1.73	0.53
1:A:347:LYS:HD3	1:A:362:ARG:HE	1.73	0.53
1:B:35:ALA:HB1	1:B:37:ARG:HH11	1.73	0.53
1:F:35:ALA:HB1	1:F:37:ARG:NH1	2.24	0.53
1:F:344:GLU:O	1:F:348:VAL:HG23	2.08	0.53
1:A:456:GLU:O	1:A:459:SER:HB3	2.09	0.52
1:F:17:LYS:O	1:F:21:ILE:HG13	2.09	0.52
1:B:398:LEU:O	1:B:402:MET:HG3	2.08	0.52
1:B:355:ARG:HG2	1:B:355:ARG:NH1	2.23	0.52
1:D:254:PRO:HB3	1:D:438:VAL:HG21	1.91	0.52
1:B:447:GLN:HB3	1:B:493:ARG:HH21	1.74	0.52
1:A:255:SER:O	1:A:259:SER:HA	2.08	0.52
1:E:314:SER:HB3	1:E:320:THR:HG22	1.92	0.52
1:D:158:ALA:HB1	1:D:161:ILE:HD12	1.91	0.52
1:F:106:SER:HB2	1:F:398:LEU:HD13	1.91	0.52
1:D:136:VAL:O	1:D:136:VAL:HG13	2.08	0.52
1:F:13:PRO:HG2	1:F:14:PHE:H	1.74	0.52
1:A:429:MET:HB3	1:A:430:PRO:HD2	1.92	0.52

Continued on next page...

Continued from previous page...

Atom-1	Atom-2	Distance(Å)	Clash(Å)
1:E:205:THR:HB	1:E:206:PRO:HD3	1.91	0.52
1:F:98:GLU:HB2	3:F:548:HOH:O	2.09	0.52
1:F:490:GLY:C	1:F:492:ASN:H	2.13	0.52
1:B:196:LYS:NZ	3:B:659:HOH:O	2.43	0.52
1:D:333:ASN:ND2	1:D:335:PHE:H	2.00	0.52
1:E:172:GLU:H	1:E:172:GLU:CD	2.13	0.52
1:C:43:LEU:HB2	1:C:48:ARG:NH1	2.23	0.52
1:E:333:ASN:HD21	1:E:335:PHE:HB2	1.74	0.52
1:D:257:PRO:HB2	1:D:497:ARG:HD2	1.91	0.52
1:B:89:ARG:O	1:B:93:GLU:HG2	2.10	0.52
1:F:308:LEU:HD11	1:F:366:PHE:HE2	1.75	0.52
1:A:196:LYS:HD2	1:A:245:ALA:CB	2.40	0.52
1:F:448:ASP:HB3	3:F:2002:HOH:O	2.09	0.52
1:E:210:ILE:N	1:E:211:PRO:HD2	2.25	0.52
1:A:447:GLN:HB3	1:A:493:ARG:HH21	1.76	0.51
1:C:232:GLN:NE2	1:C:263:ASP:H	2.08	0.51
1:F:253:ASN:HA	1:F:254:PRO:C	2.30	0.51
1:A:471:MET:HE1	1:A:495:SER:HA	1.92	0.51
1:B:254:PRO:HG2	1:B:289:TYR:CB	2.37	0.51
1:D:111:ARG:HD2	1:D:112:ASP:OD1	2.10	0.51
1:A:483:LEU:HD22	1:A:498:ALA:HB2	1.91	0.51
1:F:380:ASN:ND2	3:F:1935:HOH:O	2.42	0.51
1:B:357:LEU:HD11	1:B:372:ALA:HB2	1.93	0.51
1:E:23:ILE:HD13	1:E:473:PHE:CD1	2.45	0.51
1:A:172:GLU:HG3	1:B:375:ARG:NH2	2.25	0.51
1:B:459:SER:O	1:B:463:VAL:HG23	2.10	0.51
1:D:333:ASN:ND2	1:D:335:PHE:HB2	2.25	0.51
1:F:37:ARG:HH11	1:F:37:ARG:HG3	1.75	0.51
1:D:253:ASN:HA	1:D:254:PRO:C	2.30	0.51
1:F:454:TYR:HB2	1:F:458:PHE:CD2	2.45	0.51
1:B:529:GLN:NE2	1:B:529:GLN:HA	2.25	0.51
1:E:87:PHE:O	1:E:91:ILE:HG12	2.10	0.51
1:D:22:LYS:N	1:D:22:LYS:HD2	2.26	0.51
1:B:24:ALA:HB3	1:B:482:VAL:CG2	2.41	0.51
1:C:41:ASN:HD21	1:C:419:ARG:HH22	1.57	0.51
1:B:323:ARG:NH1	1:B:323:ARG:HA	2.26	0.51
1:A:425:ARG:NH1	3:A:830:HOH:O	2.44	0.51
1:D:203:VAL:HG22	1:D:204:PHE:N	2.26	0.51
1:F:197:VAL:HG13	1:F:197:VAL:O	2.10	0.51
1:A:344:GLU:O	1:A:348:VAL:HG23	2.11	0.51
1:D:226:ASP:OD2	1:D:228:SER:HB2	2.10	0.51
1:D:359:PRO:HG2	1:D:360:ASP:H	1.74	0.51

Continued on next page...

Continued from previous page...

Atom-1	Atom-2	Distance(Å)	Clash(Å)
1:C:41:ASN:HD22	1:C:41:ASN:H	1.57	0.51
1:B:456:GLU:CD	1:B:456:GLU:H	2.14	0.51
1:A:111:ARG:HD2	1:A:112:ASP:OD1	2.10	0.51
1:E:426:GLU:O	1:E:516:ARG:HD3	2.09	0.51
1:E:271:ARG:NH1	1:E:271:ARG:HG2	2.25	0.51
1:E:215:GLN:HG3	1:E:216:TYR:CD1	2.46	0.51
1:C:358:LEU:HB2	1:C:359:PRO:HD2	1.92	0.51
1:C:41:ASN:HD21	1:C:419:ARG:NH1	2.08	0.51
1:F:257:PRO:HB2	1:F:497:ARG:CD	2.41	0.51
1:D:513:ARG:HH11	1:D:513:ARG:HG3	1.75	0.50
1:F:417:ARG:HD2	1:F:433:ARG:NH2	2.26	0.50
1:B:197:VAL:HG22	1:B:248:ILE:CG2	2.41	0.50
1:C:471:MET:HG3	1:C:518:MET:CE	2.41	0.50
1:B:425:ARG:NH2	1:D:158:ALA:O	2.32	0.50
1:B:253:ASN:HA	1:B:254:PRO:C	2.29	0.50
1:A:208:ILE:HG22	1:A:220:GLU:OE2	2.11	0.50
1:C:72:VAL:HG12	1:C:74:VAL:HG23	1.92	0.50
1:A:23:ILE:HD12	1:A:473:PHE:CE1	2.45	0.50
1:A:379:LEU:HD23	1:B:206:PRO:HB3	1.94	0.50
1:F:50:ALA:CB	1:F:102:PHE:HD2	2.24	0.50
1:B:358:LEU:HB2	1:B:359:PRO:CD	2.37	0.50
1:A:359:PRO:HG2	1:A:360:ASP:H	1.76	0.50
1:B:372:ALA:HA	1:B:380:ASN:HD22	1.76	0.50
1:D:517:LYS:O	1:D:521:GLU:HG3	2.12	0.50
1:F:343:GLN:HB2	1:F:346:GLU:HG3	1.94	0.50
1:A:172:GLU:HG3	1:B:375:ARG:HH21	1.76	0.50
1:A:139:ARG:HG3	1:A:371:VAL:CG2	2.40	0.50
1:E:523:TYR:O	1:E:527:SER:HB2	2.11	0.50
1:E:95:ARG:O	1:E:101:ARG:HD3	2.12	0.50
1:A:72:VAL:CG1	1:B:408:TYR:HA	2.41	0.50
1:B:248:ILE:HA	1:B:282:MET:O	2.12	0.50
1:A:308:LEU:HD11	1:A:366:PHE:HE2	1.75	0.50
1:C:101:ARG:HD3	3:C:939:HOH:O	2.11	0.50
1:A:79:LYS:NZ	3:A:626:HOH:O	2.18	0.50
1:D:472:LEU:HD22	1:D:483:LEU:HB2	1.93	0.49
1:E:25:SER:OG	1:E:30:ARG:NH2	2.45	0.49
1:E:331:GLN:HE21	1:E:332:GLN:HE21	1.59	0.49
1:E:161:ILE:HD11	1:E:304:PRO:HG3	1.94	0.49
1:F:443:LEU:HD13	1:F:497:ARG:CZ	2.41	0.49
1:A:79:LYS:HB3	3:A:617:HOH:O	2.11	0.49
1:F:181:ILE:O	1:F:185:LEU:HG	2.12	0.49
1:A:476:ALA:HA	1:A:481:ILE:O	2.13	0.49

Continued on next page...

Continued from previous page...

Atom-1	Atom-2	Distance(Å)	Clash(Å)
1:D:450:THR:HB	1:D:458:PHE:CE2	2.47	0.49
1:F:359:PRO:HG2	1:F:360:ASP:H	1.76	0.49
1:D:513:ARG:NH1	1:D:513:ARG:HG3	2.28	0.49
1:E:53:ARG:HD2	3:E:551:HOH:O	2.11	0.49
1:F:188:ASN:HB3	1:F:339:LEU:HD21	1.94	0.49
1:F:322:TRP:HB3	1:F:324:LEU:HG	1.93	0.49
1:A:205:THR:O	1:A:208:ILE:HG13	2.12	0.49
1:E:487:ARG:HA	3:E:1758:HOH:O	2.12	0.49
1:F:235:ASP:OD1	1:F:269:ARG:HD3	2.12	0.49
1:A:113:GLN:OE1	1:E:505:GLU:HG3	2.13	0.49
1:B:111:ARG:HD2	1:B:112:ASP:OD1	2.12	0.49
1:B:172:GLU:HG2	1:B:176:ALA:HB2	1.95	0.49
1:A:111:ARG:HG3	1:A:118:PRO:HB3	1.94	0.49
1:E:215:GLN:HB3	3:E:1723:HOH:O	2.11	0.49
1:E:270:VAL:O	1:E:274:VAL:HG23	2.12	0.49
1:A:205:THR:HB	1:A:206:PRO:CD	2.41	0.49
1:A:490:GLY:C	1:A:492:ASN:H	2.15	0.49
1:E:353:ARG:HG3	1:E:353:ARG:NH1	2.27	0.49
1:D:513:ARG:NH1	3:D:1535:HOH:O	2.45	0.49
1:C:269:ARG:O	1:C:273:ILE:HG13	2.13	0.49
1:F:450:THR:HB	1:F:458:PHE:CE2	2.48	0.49
1:A:210:ILE:N	1:A:211:PRO:HD2	2.27	0.49
1:F:101:ARG:NH1	1:F:101:ARG:HG2	2.27	0.49
1:A:24:ALA:HB1	1:A:480:GLY:O	2.12	0.49
1:F:33:LEU:HD11	1:F:482:VAL:HG11	1.95	0.49
1:D:41:ASN:HD21	1:D:419:ARG:HH22	1.61	0.49
1:F:474:ARG:HB2	1:F:518:MET:HE3	1.95	0.49
1:E:257:PRO:HG2	1:E:258:PRO:HD3	1.95	0.49
1:E:457:ALA:O	3:E:1826:HOH:O	2.20	0.49
1:A:232:GLN:NE2	3:A:759:HOH:O	2.45	0.49
1:E:481:ILE:HD13	1:E:503:LEU:CD1	2.42	0.49
1:E:306:ASN:ND2	1:E:334:VAL:HG11	2.27	0.49
1:E:18:ASP:O	1:E:22:LYS:HG3	2.13	0.49
1:A:201:MET:HB3	1:A:202:PRO:HA	1.94	0.49
1:A:95:ARG:NH1	3:A:645:HOH:O	2.44	0.49
1:D:24:ALA:HB1	1:D:480:GLY:O	2.13	0.49
1:E:344:GLU:O	1:E:348:VAL:HG23	2.13	0.49
1:A:357:LEU:HD11	1:A:372:ALA:HB2	1.94	0.48
1:E:472:LEU:HD22	1:E:483:LEU:HB2	1.94	0.48
1:B:232:GLN:NE2	1:B:263:ASP:H	2.11	0.48
1:F:25:SER:HB2	1:F:30:ARG:HH22	1.76	0.48
1:C:15:GLU:HG2	1:C:15:GLU:O	2.14	0.48

Continued on next page...

Continued from previous page...

Atom-1	Atom-2	Distance(Å)	Clash(Å)
1:F:425:ARG:NH2	3:F:617:HOH:O	2.29	0.48
1:A:333:ASN:ND2	1:A:335:PHE:CB	2.76	0.48
1:E:264:GLN:H	1:E:264:GLN:NE2	2.00	0.48
1:A:447:GLN:HE21	1:A:463:VAL:HG21	1.78	0.48
1:E:201:MET:HE3	1:E:208:ILE:HD11	1.94	0.48
1:D:357:LEU:HD11	1:D:372:ALA:HB2	1.96	0.48
1:D:204:PHE:HE2	1:D:207:TYR:CG	2.32	0.48
1:E:135:PRO:HG3	1:E:387:THR:HG23	1.96	0.48
1:F:461:TRP:CZ2	1:F:465:GLN:HG3	2.48	0.48
1:A:23:ILE:HD12	1:A:473:PHE:HE1	1.79	0.48
1:E:491:SER:HB2	3:E:1578:HOH:O	2.13	0.48
1:A:76:GLY:O	1:B:43:LEU:HD21	2.13	0.48
1:B:472:LEU:CD1	1:B:485:PRO:HG3	2.44	0.48
1:E:447:GLN:HB3	1:E:493:ARG:NH2	2.22	0.48
1:C:64:LEU:CD2	3:F:953:HOH:O	2.53	0.48
1:F:41:ASN:HD21	1:F:419:ARG:NH2	2.08	0.48
1:E:322:TRP:HB3	1:E:324:LEU:HG	1.95	0.48
1:B:493:ARG:HD2	3:B:692:HOH:O	2.12	0.48
1:F:353:ARG:HG3	1:F:353:ARG:NH1	2.28	0.48
1:E:481:ILE:HG21	1:E:511:ILE:HD11	1.95	0.48
1:F:21:ILE:O	1:F:21:ILE:HG22	2.14	0.48
1:F:25:SER:HB2	1:F:30:ARG:NH2	2.29	0.48
1:D:487:ARG:NH2	3:D:1265:HOH:O	2.46	0.48
1:A:461:TRP:CE3	1:A:465:GLN:HG3	2.48	0.48
1:B:209:GLU:O	1:B:213:LEU:HG	2.14	0.47
1:D:506:TYR:HB3	1:F:113:GLN:O	2.14	0.47
1:F:204:PHE:HE2	1:F:207:TYR:CG	2.32	0.47
1:D:71:THR:O	1:D:71:THR:HG23	2.14	0.47
1:D:372:ALA:CA	1:D:380:ASN:HD22	2.26	0.47
1:F:487:ARG:HG2	3:F:1867:HOH:O	2.14	0.47
1:B:463:VAL:HG13	1:B:494:PRO:HD2	1.96	0.47
1:C:69:MET:O	3:C:1002:HOH:O	2.20	0.47
1:A:72:VAL:HG22	1:B:407:GLU:HB3	1.97	0.47
1:F:41:ASN:ND2	1:F:419:ARG:HH22	2.09	0.47
1:A:150:GLN:NE2	3:A:657:HOH:O	2.47	0.47
1:B:489:PHE:CE1	1:B:493:ARG:HD3	2.50	0.47
1:E:224:ASN:O	1:E:237:GLU:HG2	2.14	0.47
1:C:41:ASN:ND2	1:C:419:ARG:HH12	2.09	0.47
1:C:320:THR:O	1:C:323:ARG:HD2	2.14	0.47
1:C:468:THR:O	1:C:472:LEU:HG	2.14	0.47
1:A:24:ALA:CB	1:A:482:VAL:HG23	2.43	0.47
1:D:515:LEU:HD11	1:D:518:MET:HE1	1.96	0.47

Continued on next page...

Continued from previous page...

Atom-1	Atom-2	Distance(Å)	Clash(Å)
1:C:252:VAL:O	1:C:255:SER:HA	2.15	0.47
1:F:237:GLU:HA	1:F:240:LYS:HD2	1.97	0.47
1:D:489:PHE:O	1:D:490:GLY:O	2.33	0.47
1:E:197:VAL:O	1:E:197:VAL:HG13	2.14	0.47
1:D:306:ASN:ND2	1:D:334:VAL:HG11	2.29	0.47
1:B:208:ILE:O	1:B:211:PRO:HG2	2.14	0.47
1:E:254:PRO:HD3	1:E:296:PHE:CE1	2.50	0.47
1:C:433:ARG:HH11	1:C:433:ARG:HG2	1.80	0.47
1:A:481:ILE:HD13	1:A:503:LEU:HD13	1.97	0.47
1:A:46:THR:N	1:A:47:PRO:HD2	2.30	0.47
1:B:425:ARG:NH2	1:D:153:ILE:HG21	2.30	0.47
1:A:309:LEU:HD23	1:A:310:VAL:N	2.30	0.47
1:C:305:GLU:O	1:C:334:VAL:HG13	2.15	0.47
1:E:205:THR:CG2	1:E:209:GLU:OE2	2.63	0.47
1:F:230:ASN:HB3	3:F:2006:HOH:O	2.14	0.47
1:E:139:ARG:O	1:E:140:MET:HB2	2.14	0.47
1:D:41:ASN:HD21	1:D:419:ARG:NH1	2.13	0.46
1:B:458:PHE:CE1	1:B:523:TYR:HA	2.51	0.46
1:B:89:ARG:NH1	1:B:93:GLU:HG3	2.31	0.46
1:F:12:SER:O	1:F:16:LEU:HB2	2.15	0.46
1:D:472:LEU:CD2	1:D:483:LEU:HB2	2.45	0.46
1:F:16:LEU:O	1:F:20:LEU:HG	2.14	0.46
1:B:102:PHE:CE1	1:B:402:MET:CE	2.99	0.46
1:B:404:GLU:OE1	1:F:418:ARG:CD	2.63	0.46
1:B:95:ARG:NH2	3:B:944:HOH:O	2.49	0.46
1:F:71:THR:HG22	1:F:71:THR:O	2.16	0.46
1:F:490:GLY:HA3	3:F:2011:HOH:O	2.15	0.46
1:E:232:GLN:HE22	1:E:262:MET:HA	1.80	0.46
1:E:248:ILE:HA	1:E:282:MET:O	2.15	0.46
1:E:24:ALA:HB3	1:E:482:VAL:HG23	1.98	0.46
1:F:474:ARG:HH11	1:F:474:ARG:CG	2.29	0.46
1:A:433:ARG:HG2	1:A:434:ASP:N	2.31	0.46
1:D:203:VAL:HG22	1:D:204:PHE:H	1.81	0.46
1:D:107:LEU:HD21	3:D:2093:HOH:O	2.14	0.46
1:C:162:PRO:HG2	1:C:165:SER:OG	2.15	0.46
1:D:533:LEU:HD13	3:D:2205:HOH:O	2.14	0.46
1:B:257:PRO:CD	1:B:258:PRO:HD3	2.46	0.46
1:B:528:GLY:O	1:B:529:GLN:HB3	2.16	0.46
1:F:187:LEU:HD13	1:F:353:ARG:HH21	1.80	0.46
1:E:172:GLU:HG2	1:E:176:ALA:CB	2.46	0.46
1:E:376:ALA:O	1:E:378:ALA:N	2.47	0.46
1:C:489:PHE:N	1:C:489:PHE:CD1	2.83	0.46

Continued on next page...

Continued from previous page...

Atom-1	Atom-2	Distance(Å)	Clash(Å)
1:C:375:ARG:NH2	1:D:172:GLU:HG3	2.31	0.46
1:B:210:ILE:HA	1:B:213:LEU:HG	1.97	0.46
1:A:528:GLY:O	3:A:865:HOH:O	2.20	0.46
1:D:490:GLY:C	1:D:492:ASN:H	2.20	0.46
1:F:358:LEU:H	1:F:358:LEU:HD23	1.81	0.46
1:B:197:VAL:CG2	1:B:218:LEU:HD13	2.45	0.46
1:E:264:GLN:N	1:E:264:GLN:HE21	1.99	0.45
1:E:30:ARG:HG2	1:E:30:ARG:NH1	2.29	0.45
3:B:550:HOH:O	1:F:418:ARG:HD3	2.14	0.45
1:C:471:MET:HG3	1:C:518:MET:HE2	1.99	0.45
1:F:282:MET:CE	1:F:335:PHE:CE2	2.98	0.45
1:E:23:ILE:HD13	1:E:473:PHE:CE1	2.52	0.45
1:F:116:LEU:HD13	1:F:143:ILE:HG23	1.98	0.45
1:D:348:VAL:O	1:D:351:ASP:HB2	2.16	0.45
1:C:323:ARG:NH1	1:C:323:ARG:HA	2.32	0.45
1:F:140:MET:HE1	1:F:145:GLU:HA	1.98	0.45
1:E:489:PHE:N	1:E:489:PHE:CD2	2.83	0.45
1:F:41:ASN:HD21	1:F:419:ARG:NH1	2.13	0.45
1:B:489:PHE:CD2	1:B:489:PHE:N	2.85	0.45
1:A:489:PHE:HD2	1:A:489:PHE:N	2.13	0.45
1:F:257:PRO:CD	1:F:258:PRO:HD3	2.47	0.45
1:D:24:ALA:HB3	1:D:482:VAL:HG23	1.97	0.45
1:E:102:PHE:CE1	1:E:402:MET:HE1	2.51	0.45
1:F:447:GLN:HG3	1:F:459:SER:OG	2.17	0.45
1:F:53:ARG:HD2	3:F:1915:HOH:O	2.16	0.45
1:B:387:THR:OG1	1:B:388:PRO:HD3	2.17	0.45
1:E:164:GLU:H	1:E:164:GLU:HG2	1.52	0.45
1:B:257:PRO:HB2	1:B:497:ARG:CD	2.42	0.45
1:F:17:LYS:HE3	1:F:487:ARG:NH2	2.32	0.45
1:C:72:VAL:CG1	1:C:74:VAL:HG23	2.46	0.45
1:A:30:ARG:HG3	1:A:30:ARG:HH11	1.82	0.45
1:F:355:ARG:CZ	1:F:355:ARG:HB2	2.46	0.45
1:E:265:ARG:HG2	1:E:265:ARG:HH11	1.82	0.45
1:C:49:ARG:O	1:C:53:ARG:HB2	2.16	0.45
1:B:27:ASP:OD1	1:B:30:ARG:NH1	2.49	0.45
1:A:139:ARG:HD3	1:A:368:ASP:OD1	2.17	0.45
1:E:453:LEU:HD22	1:E:516:ARG:NH1	2.32	0.45
1:E:136:VAL:HA	1:E:137:PRO:C	2.37	0.45
1:D:527:SER:O	1:D:531:GLN:HG3	2.17	0.45
1:E:362:ARG:HG3	1:E:362:ARG:NH1	2.30	0.45
1:C:314:SER:HB3	1:C:320:THR:HG22	1.99	0.45
1:D:105:LYS:HB3	1:D:402:MET:CE	2.47	0.44

Continued on next page...

Continued from previous page...

Atom-1	Atom-2	Distance(Å)	Clash(Å)
1:E:49:ARG:O	1:E:53:ARG:HG3	2.18	0.44
1:F:355:ARG:HB2	1:F:355:ARG:NH1	2.32	0.44
1:D:255:SER:O	1:D:259:SER:HA	2.17	0.44
1:C:24:ALA:HB3	1:C:482:VAL:HG23	2.00	0.44
1:F:20:LEU:HB3	1:F:482:VAL:CG1	2.46	0.44
1:E:192:LYS:O	1:E:195:ASP:HB2	2.17	0.44
1:E:359:PRO:HG2	1:E:360:ASP:H	1.82	0.44
1:B:23:ILE:HD13	1:B:473:PHE:CE1	2.53	0.44
1:A:408:TYR:HA	1:B:72:VAL:HG21	1.99	0.44
1:B:101:ARG:CZ	3:B:860:HOH:O	2.65	0.44
1:C:205:THR:HB	3:C:852:HOH:O	2.17	0.44
1:F:255:SER:O	1:F:259:SER:HA	2.17	0.44
1:F:41:ASN:C	1:F:41:ASN:HD22	2.19	0.44
1:E:467:SER:O	1:E:470:ASP:HB2	2.17	0.44
1:B:264:GLN:O	1:B:268:GLU:HG2	2.18	0.44
1:E:245:ALA:O	3:E:1734:HOH:O	2.21	0.44
1:C:54:LEU:HD21	1:C:125:MET:HB3	2.00	0.44
1:B:333:ASN:ND2	1:B:335:PHE:HB2	2.33	0.44
1:A:21:ILE:CG2	1:A:22:LYS:N	2.80	0.44
1:B:23:ILE:HD13	1:B:473:PHE:HD1	1.79	0.44
1:A:309:LEU:HB3	1:A:328:ALA:HB3	1.99	0.44
1:B:456:GLU:O	1:B:459:SER:HB3	2.17	0.44
1:D:181:ILE:O	1:D:185:LEU:HG	2.18	0.44
1:C:489:PHE:N	1:C:489:PHE:HD1	2.16	0.44
1:D:101:ARG:CD	3:D:557:HOH:O	2.66	0.44
1:D:156:MET:HG3	1:D:309:LEU:HD21	2.00	0.44
1:A:71:THR:HG22	1:A:71:THR:O	2.17	0.44
1:B:287:ASP:OD1	1:B:287:ASP:N	2.50	0.44
1:E:483:LEU:CD2	1:E:498:ALA:HB2	2.48	0.44
1:E:50:ALA:CB	1:E:102:PHE:HD2	2.31	0.44
1:E:269:ARG:O	1:E:273:ILE:HG13	2.16	0.44
1:C:41:ASN:HD22	1:C:41:ASN:N	2.13	0.43
1:E:528:GLY:O	3:E:1841:HOH:O	2.21	0.43
1:C:309:LEU:HB3	1:C:328:ALA:HB3	2.00	0.43
1:A:376:ALA:O	1:A:378:ALA:N	2.50	0.43
1:D:251:CYS:O	1:D:285:THR:HA	2.18	0.43
1:A:430:PRO:HA	1:A:431:PRO:HD3	1.79	0.43
1:E:253:ASN:HA	1:E:254:PRO:C	2.38	0.43
1:B:72:VAL:HG13	1:B:74:VAL:HG23	2.00	0.43
1:F:69:MET:O	1:F:70:THR:HG23	2.17	0.43
1:B:234:PRO:HG2	1:B:237:GLU:HB2	1.99	0.43
1:D:136:VAL:O	1:D:136:VAL:CG1	2.67	0.43

Continued on next page...

Continued from previous page...

Atom-1	Atom-2	Distance(Å)	Clash(Å)
1:F:355:ARG:CB	1:F:355:ARG:NH1	2.81	0.43
1:A:304:PRO:HB2	1:A:330:HIS:HD2	1.83	0.43
1:F:39:ASN:HA	1:F:40:PRO:HD3	1.86	0.43
1:A:468:THR:OG1	1:A:494:PRO:HA	2.18	0.43
1:E:429:MET:HB3	1:E:430:PRO:HD2	2.00	0.43
1:A:255:SER:OG	1:A:258:PRO:HB2	2.18	0.43
1:F:54:LEU:HD21	1:F:125:MET:HB3	2.00	0.43
1:A:89:ARG:O	1:A:93:GLU:HB2	2.17	0.43
1:F:489:PHE:H	1:F:489:PHE:HD1	1.65	0.43
1:B:461:TRP:CZ3	1:B:526:TYR:HB2	2.54	0.43
1:A:232:GLN:NE2	1:A:263:ASP:H	2.15	0.43
1:E:287:ASP:N	1:E:287:ASP:OD1	2.51	0.43
1:C:96:ASP:N	1:C:96:ASP:OD1	2.50	0.43
1:D:308:LEU:HA	1:D:308:LEU:HD23	1.89	0.43
1:A:487:ARG:HD2	1:A:487:ARG:HA	1.81	0.43
1:D:210:ILE:N	1:D:211:PRO:CD	2.81	0.43
1:C:254:PRO:HB3	1:C:438:VAL:HG21	2.01	0.43
1:F:80:ILE:HG13	1:F:123:HIS:HB2	2.00	0.43
1:B:359:PRO:HG2	1:B:360:ASP:H	1.84	0.43
1:B:255:SER:OG	1:B:258:PRO:HB2	2.19	0.43
1:B:41:ASN:ND2	1:B:419:ARG:HH12	2.16	0.43
1:B:41:ASN:HD21	1:B:419:ARG:NH1	2.17	0.43
1:A:388:PRO:HG2	1:B:322:TRP:CD2	2.54	0.43
1:F:215:GLN:NE2	3:F:1976:HOH:O	2.51	0.43
1:E:434:ASP:HB2	3:E:1778:HOH:O	2.19	0.43
1:D:528:GLY:O	1:D:532:ASN:HB2	2.19	0.43
1:D:242:LYS:HE2	1:D:277:HIS:CD2	2.54	0.43
1:F:282:MET:HE3	1:F:335:PHE:CD2	2.53	0.43
1:B:497:ARG:HD2	3:B:901:HOH:O	2.18	0.43
1:F:41:ASN:ND2	1:F:419:ARG:HH12	2.12	0.43
1:E:446:LEU:HD13	1:E:471:MET:CE	2.49	0.43
1:C:483:LEU:HD22	1:C:498:ALA:HB2	2.01	0.43
1:C:489:PHE:O	1:C:490:GLY:O	2.37	0.43
1:E:351:ASP:OD2	1:E:362:ARG:NH1	2.48	0.43
1:E:201:MET:CE	1:E:208:ILE:HD11	2.48	0.43
1:F:53:ARG:HD3	1:F:100:VAL:HG23	2.01	0.43
1:E:278:ARG:HH11	1:E:278:ARG:HG3	1.84	0.43
1:C:37:ARG:HH11	1:C:37:ARG:HG3	1.84	0.43
1:F:149:ARG:HB3	1:F:168:LEU:HD11	2.01	0.43
1:E:366:PHE:HA	1:E:369:ARG:HG3	2.00	0.43
1:B:333:ASN:ND2	1:B:336:ASP:H	2.16	0.43
1:C:308:LEU:HD23	1:C:308:LEU:HA	1.92	0.43

Continued on next page...

Continued from previous page...

Atom-1	Atom-2	Distance(Å)	Clash(Å)
1:E:71:THR:HG22	1:E:71:THR:O	2.18	0.43
1:F:20:LEU:C	1:F:22:LYS:H	2.22	0.42
1:C:15:GLU:C	1:C:17:LYS:N	2.70	0.42
1:C:172:GLU:HG2	1:C:176:ALA:CB	2.48	0.42
1:B:210:ILE:N	1:B:211:PRO:CD	2.81	0.42
1:A:308:LEU:HD23	1:A:308:LEU:HA	1.65	0.42
1:A:41:ASN:HD22	1:A:41:ASN:C	2.23	0.42
1:E:484:LEU:O	1:E:497:ARG:N	2.48	0.42
1:E:446:LEU:HB2	1:E:471:MET:HE1	2.01	0.42
1:A:433:ARG:HD3	3:A:792:HOH:O	2.18	0.42
1:E:426:GLU:O	1:E:427:LEU:HD23	2.19	0.42
1:D:87:PHE:O	1:D:91:ILE:HG12	2.20	0.42
1:F:140:MET:CE	1:F:145:GLU:HA	2.49	0.42
1:D:201:MET:CE	1:D:222:ALA:HB2	2.48	0.42
1:F:330:HIS:ND1	1:F:332:GLN:HG2	2.34	0.42
1:F:156:MET:CE	1:F:156:MET:HA	2.50	0.42
1:F:358:LEU:N	1:F:358:LEU:HD23	2.35	0.42
1:C:172:GLU:H	1:C:172:GLU:CD	2.21	0.42
1:F:468:THR:O	1:F:472:LEU:HG	2.19	0.42
1:F:459:SER:O	1:F:463:VAL:HG23	2.20	0.42
1:F:305:GLU:CD	1:F:305:GLU:H	2.23	0.42
1:F:137:PRO:HD2	1:F:140:MET:O	2.19	0.42
1:B:111:ARG:NH2	3:B:2145:HOH:O	2.48	0.42
1:A:210:ILE:HD11	1:B:379:LEU:HD11	2.02	0.42
1:E:187:LEU:HD13	1:E:353:ARG:NH2	2.34	0.42
1:C:497:ARG:HD2	3:C:1174:HOH:O	2.18	0.42
1:B:503:LEU:HB2	1:B:508:TYR:CZ	2.55	0.42
1:E:406:ASP:HA	3:E:1698:HOH:O	2.19	0.42
1:B:286:ASP:OD2	2:B:900:PLP:N1	2.52	0.42
1:B:489:PHE:O	1:B:490:GLY:O	2.38	0.42
1:E:21:ILE:HG12	1:E:33:LEU:HD12	2.02	0.42
1:A:404:GLU:OE1	1:E:418:ARG:HD2	2.18	0.42
1:B:434:ASP:OD1	1:B:434:ASP:C	2.58	0.42
1:C:237:GLU:OE2	1:C:240:LYS:NZ	2.45	0.42
1:C:288:VAL:HG23	1:C:312:SER:HB3	2.02	0.42
1:B:365:LYS:O	1:B:369:ARG:HG3	2.20	0.42
1:E:149:ARG:HB3	1:E:168:LEU:HD11	2.01	0.42
1:B:333:ASN:HD21	1:B:335:PHE:HB2	1.83	0.42
1:D:257:PRO:HB2	1:D:497:ARG:CD	2.50	0.42
1:E:254:PRO:HB3	1:E:438:VAL:HG21	2.02	0.42
1:B:271:ARG:HB2	1:B:302:ILE:CG2	2.50	0.42
1:F:362:ARG:HD3	3:F:2034:HOH:O	2.20	0.42

Continued on next page...

Continued from previous page...

Atom-1	Atom-2	Distance(Å)	Clash(Å)
1:C:423:LEU:HD21	1:C:444:ILE:HD11	2.01	0.42
1:A:322:TRP:HB3	1:A:324:LEU:HG	2.01	0.42
1:D:208:ILE:O	1:D:211:PRO:HG2	2.20	0.42
1:D:271:ARG:HH11	1:D:302:ILE:HG23	1.84	0.42
1:D:454:TYR:HB2	1:D:458:PHE:CD2	2.55	0.42
1:F:32:MET:O	1:F:484:LEU:HD21	2.19	0.42
1:F:216:TYR:O	1:F:217:ALA:HB3	2.20	0.42
1:B:254:PRO:HD3	1:B:296:PHE:CE1	2.54	0.41
1:F:139:ARG:O	1:F:140:MET:HB2	2.20	0.41
1:D:513:ARG:NH1	3:D:1536:HOH:O	2.53	0.41
1:B:41:ASN:ND2	1:B:419:ARG:HH22	2.16	0.41
1:A:460:GLU:O	1:A:464:LYS:HG2	2.20	0.41
1:C:287:ASP:OD1	1:C:287:ASP:N	2.53	0.41
1:C:299:LEU:HA	1:C:299:LEU:HD23	1.94	0.41
1:F:101:ARG:NH2	1:F:105:LYS:NZ	2.69	0.41
1:B:41:ASN:HD22	1:B:41:ASN:C	2.23	0.41
1:F:531:GLN:C	1:F:532:ASN:HD22	2.24	0.41
1:E:154:ARG:NH1	3:E:1690:HOH:O	2.48	0.41
1:D:489:PHE:N	1:D:489:PHE:CD1	2.88	0.41
1:B:529:GLN:HE21	1:B:529:GLN:HA	1.83	0.41
1:D:53:ARG:HD3	1:D:100:VAL:HG23	2.02	0.41
1:C:316:TYR:OH	1:C:409:LYS:HB2	2.19	0.41
1:C:457:ALA:HB3	3:C:1294:HOH:O	2.21	0.41
1:C:357:LEU:HD22	1:C:357:LEU:HA	1.85	0.41
1:C:459:SER:O	1:C:463:VAL:HG23	2.20	0.41
1:E:487:ARG:HH11	1:E:487:ARG:CG	2.33	0.41
1:B:268:GLU:HB3	1:B:271:ARG:NH2	2.35	0.41
1:F:410:HIS:O	1:F:414:GLN:HB2	2.21	0.41
1:F:320:THR:O	1:F:323:ARG:HD2	2.19	0.41
1:D:445:ASP:O	1:D:449:VAL:HG23	2.20	0.41
1:D:333:ASN:ND2	1:D:335:PHE:N	2.66	0.41
1:C:227:PRO:HG2	1:C:489:PHE:CB	2.45	0.41
1:C:41:ASN:HD21	1:C:419:ARG:NH2	2.17	0.41
1:D:201:MET:HE3	1:D:222:ALA:HB2	2.02	0.41
1:B:231:TRP:CZ3	1:B:488:GLY:HA3	2.55	0.41
1:B:308:LEU:HG	1:B:335:PHE:CE1	2.55	0.41
1:F:333:ASN:ND2	1:F:335:PHE:HB2	2.35	0.41
1:C:490:GLY:C	1:C:492:ASN:H	2.24	0.41
1:B:323:ARG:HH11	1:B:323:ARG:HA	1.85	0.41
1:A:26:SER:O	1:A:30:ARG:HG3	2.21	0.41
1:D:156:MET:HG3	1:D:309:LEU:CD2	2.51	0.41
1:F:161:ILE:CD1	1:F:304:PRO:HB3	2.50	0.41

Continued on next page...

Continued from previous page...

Atom-1	Atom-2	Distance(Å)	Clash(Å)
1:D:435:GLU:HG2	3:D:1447:HOH:O	2.20	0.41
1:D:402:MET:HE2	1:D:402:MET:HB3	1.96	0.41
1:E:297:GLN:HE21	1:E:302:ILE:HD11	1.82	0.41
1:E:372:ALA:HA	1:E:380:ASN:HD22	1.86	0.41
1:D:124:GLU:OE2	1:D:143:ILE:HB	2.21	0.41
1:C:144:SER:O	1:C:148:VAL:HG23	2.21	0.41
1:C:161:ILE:HD11	1:C:304:PRO:HB3	2.02	0.41
1:B:39:ASN:HA	1:B:40:PRO:HD3	1.90	0.41
1:D:250:PHE:CD1	1:D:284:LEU:HD23	2.56	0.41
1:E:303:CYS:N	1:E:304:PRO:HD3	2.36	0.41
1:F:274:VAL:HA	1:F:278:ARG:O	2.20	0.41
1:B:19:GLU:HA	1:B:22:LYS:CG	2.49	0.41
1:F:348:VAL:O	1:F:351:ASP:HB2	2.20	0.41
1:B:188:ASN:HB3	1:B:339:LEU:HD21	2.02	0.41
1:A:268:GLU:OE2	1:A:271:ARG:NH2	2.51	0.41
1:E:342:LEU:HD22	1:E:346:GLU:OE1	2.21	0.41
1:F:20:LEU:C	1:F:22:LYS:N	2.74	0.41
1:F:195:ASP:CG	1:F:247:LYS:HD2	2.40	0.41
1:F:32:MET:O	1:F:36:GLY:HA2	2.21	0.41
1:C:135:PRO:HD2	3:C:1083:HOH:O	2.21	0.41
1:F:395:LEU:HD23	1:F:395:LEU:HA	1.88	0.41
1:A:43:LEU:C	1:A:43:LEU:HD12	2.41	0.41
1:B:58:ALA:CB	1:B:126:VAL:HG13	2.51	0.41
1:A:489:PHE:HD2	1:A:489:PHE:H	1.68	0.41
1:F:448:ASP:O	1:F:452:LYS:HG3	2.21	0.41
1:E:203:VAL:HG22	1:E:204:PHE:N	2.35	0.41
1:A:449:VAL:O	1:A:453:LEU:HG	2.21	0.41
1:C:430:PRO:HA	1:C:431:PRO:HD3	1.86	0.41
1:F:333:ASN:ND2	1:F:333:ASN:C	2.75	0.40
1:E:195:ASP:CG	1:E:247:LYS:HG3	2.41	0.40
1:C:89:ARG:O	1:C:93:GLU:HG2	2.21	0.40
1:F:12:SER:HB3	1:F:15:GLU:HB2	2.03	0.40
1:F:239:ASP:CG	1:F:269:ARG:HH21	2.23	0.40
1:E:458:PHE:CE1	1:E:523:TYR:HA	2.57	0.40
1:A:481:ILE:HD13	1:A:503:LEU:CD1	2.51	0.40
1:B:40:PRO:HB3	1:B:42:PHE:CZ	2.57	0.40
1:B:136:VAL:HA	1:B:137:PRO:C	2.41	0.40
1:C:294:ASP:HA	1:C:413:LYS:HZ1	1.87	0.40
1:D:43:LEU:HB2	1:D:48:ARG:NH1	2.37	0.40
1:F:308:LEU:HG	1:F:335:PHE:CE1	2.56	0.40
1:C:372:ALA:CA	1:C:380:ASN:HD22	2.31	0.40
1:D:418:ARG:CD	1:F:404:GLU:OE1	2.64	0.40

Continued on next page...

Continued from previous page...

Atom-1	Atom-2	Distance(Å)	Clash(Å)
1:F:503:LEU:HB2	1:F:508:TYR:CZ	2.56	0.40
1:F:490:GLY:C	1:F:492:ASN:N	2.73	0.40
1:D:252:VAL:O	1:D:255:SER:HA	2.21	0.40
1:B:91:ILE:HA	1:B:91:ILE:HD13	1.90	0.40
1:E:35:ALA:O	1:E:37:ARG:HG3	2.21	0.40

All (1) symmetry-related close contacts are listed below. The label for Atom-2 includes the symmetry operator and encoded unit-cell translations to be applied.

Atom-1	Atom-2	Distance(Å)	Clash(Å)
1:C:425:ARG:NH2	3:E:1708:HOH:O[4_566]	2.17	0.03

5.3 Torsion angles

5.3.1 Protein backbone ⓘ

In the following table, the Percentiles column shows the percent Ramachandran outliers of the chain as a percentile score with respect to all X-ray entries followed by that with respect to entries of similar resolution. The Analysed column shows the number of residues for which the backbone conformation was analysed, and the total number of residues.

Mol	Chain	Analysed	Favoured	Allowed	Outliers	Percentiles	
1	A	508/546 (93%)	484 (95%)	19 (4%)	5 (1%)	22	38
1	B	513/546 (94%)	485 (94%)	25 (5%)	3 (1%)	33	55
1	C	514/546 (94%)	491 (96%)	18 (4%)	5 (1%)	22	38
1	D	512/546 (94%)	484 (94%)	24 (5%)	4 (1%)	27	46
1	E	510/546 (93%)	479 (94%)	27 (5%)	4 (1%)	27	46
1	F	521/546 (95%)	487 (94%)	28 (5%)	6 (1%)	19	32
All	All	3078/3276 (94%)	2910 (94%)	141 (5%)	27 (1%)	25	42

All (27) Ramachandran outliers are listed below:

Mol	Chain	Res	Type
1	A	491	SER
1	B	491	SER
1	C	491	SER
1	D	491	SER
1	D	534	LYS
1	E	491	SER

Continued on next page...

Continued from previous page...

Mol	Chain	Res	Type
1	F	491	SER
1	A	490	GLY
1	B	376	ALA
1	B	490	GLY
1	C	490	GLY
1	D	490	GLY
1	E	490	GLY
1	F	490	GLY
1	A	376	ALA
1	C	492	ASN
1	C	16	LEU
1	C	376	ALA
1	F	13	PRO
1	F	159	ASP
1	A	377	VAL
1	D	359	PRO
1	E	377	VAL
1	A	359	PRO
1	E	359	PRO
1	F	21	ILE
1	F	377	VAL

5.3.2 Protein sidechains ⓘ

In the following table, the Percentiles column shows the percent sidechain outliers of the chain as a percentile score with respect to all X-ray entries followed by that with respect to entries of similar resolution. The Analysed column shows the number of residues for which the sidechain conformation was analysed, and the total number of residues.

Mol	Chain	Analysed	Rotameric	Outliers	Percentiles	
1	A	424/455 (93%)	415 (98%)	9 (2%)	66	88
1	B	429/455 (94%)	414 (96%)	15 (4%)	48	74
1	C	430/455 (94%)	414 (96%)	16 (4%)	45	72
1	D	427/455 (94%)	415 (97%)	12 (3%)	56	82
1	E	426/455 (94%)	413 (97%)	13 (3%)	52	79
1	F	436/455 (96%)	421 (97%)	15 (3%)	49	75
All	All	2572/2730 (94%)	2492 (97%)	80 (3%)	52	79

All (80) residues with a non-rotameric sidechain are listed below:

Mol	Chain	Res	Type
1	A	41	ASN
1	A	53	ARG
1	A	192	LYS
1	A	204	PHE
1	A	208	ILE
1	A	269	ARG
1	A	272	ASN
1	A	309	LEU
1	A	489	PHE
1	B	37	ARG
1	B	41	ASN
1	B	43	LEU
1	B	53	ARG
1	B	71	THR
1	B	81	ASP
1	B	163	SER
1	B	202	PRO
1	B	204	PHE
1	B	230	ASN
1	B	331	GLN
1	B	333	ASN
1	B	466	SER
1	B	470	ASP
1	B	489	PHE
1	C	30	ARG
1	C	41	ASN
1	C	43	LEU
1	C	53	ARG
1	C	69	MET
1	C	72	VAL
1	C	79	LYS
1	C	95	ARG
1	C	154	ARG
1	C	204	PHE
1	C	250	PHE
1	C	264	GLN
1	C	332	GLN
1	C	333	ASN
1	C	357	LEU
1	C	489	PHE
1	D	22	LYS
1	D	41	ASN
1	D	43	LEU

Continued on next page...

Continued from previous page...

Mol	Chain	Res	Type
1	D	53	ARG
1	D	71	THR
1	D	81	ASP
1	D	159	ASP
1	D	165	SER
1	D	201	MET
1	D	204	PHE
1	D	230	ASN
1	D	489	PHE
1	E	41	ASN
1	E	164	GLU
1	E	204	PHE
1	E	259	SER
1	E	264	GLN
1	E	305	GLU
1	E	357	LEU
1	E	414	GLN
1	E	425	ARG
1	E	434	ASP
1	E	456	GLU
1	E	487	ARG
1	E	489	PHE
1	F	41	ASN
1	F	81	ASP
1	F	93	GLU
1	F	101	ARG
1	F	164	GLU
1	F	169	PHE
1	F	204	PHE
1	F	205	THR
1	F	230	ASN
1	F	268	GLU
1	F	333	ASN
1	F	470	ASP
1	F	473	PHE
1	F	474	ARG
1	F	489	PHE

Some sidechains can be flipped to improve hydrogen bonding and reduce clashes. All (58) such sidechains are listed below:

Mol	Chain	Res	Type
1	A	41	ASN

Continued on next page...

Continued from previous page...

Mol	Chain	Res	Type
1	A	150	GLN
1	A	232	GLN
1	A	277	HIS
1	A	333	ASN
1	A	380	ASN
1	A	410	HIS
1	A	447	GLN
1	A	492	ASN
1	A	504	ASN
1	B	34	ASN
1	B	41	ASN
1	B	142	ASN
1	B	232	GLN
1	B	333	ASN
1	B	380	ASN
1	B	447	GLN
1	B	504	ASN
1	B	529	GLN
1	C	34	ASN
1	C	41	ASN
1	C	215	GLN
1	C	232	GLN
1	C	264	GLN
1	C	277	HIS
1	C	332	GLN
1	C	333	ASN
1	C	380	ASN
1	C	447	GLN
1	C	504	ASN
1	D	34	ASN
1	D	41	ASN
1	D	150	GLN
1	D	230	ASN
1	D	232	GLN
1	D	333	ASN
1	D	380	ASN
1	D	504	ASN
1	E	34	ASN
1	E	41	ASN
1	E	150	GLN
1	E	232	GLN
1	E	264	GLN

Continued on next page...

Continued from previous page...

Mol	Chain	Res	Type
1	E	297	GLN
1	E	306	ASN
1	E	332	GLN
1	E	333	ASN
1	E	447	GLN
1	E	504	ASN
1	F	34	ASN
1	F	41	ASN
1	F	232	GLN
1	F	306	ASN
1	F	332	GLN
1	F	333	ASN
1	F	380	ASN
1	F	410	HIS
1	F	532	ASN

5.3.3 RNA ⓘ

There are no RNA chains in this entry.

5.4 Non-standard residues in protein, DNA, RNA chains ⓘ

There are no non-standard protein/DNA/RNA residues in this entry.

5.5 Carbohydrates ⓘ

There are no carbohydrates in this entry.

5.6 Ligand geometry ⓘ

6 ligands are modelled in this entry.

In the following table, the Counts columns list the number of bonds (or angles) for which Mogul statistics could be retrieved, the number of bonds (or angles) that are observed in the model and the number of bonds (or angles) that are defined in the chemical component dictionary. The Link column lists molecule types, if any, to which the group is linked. The Z score for a bond length (or angle) is the number of standard deviations the observed value is removed from the expected value. A bond length (or angle) with $|Z| > 2$ is considered an outlier worth inspection. RMSZ is the root-mean-square of all Z scores of the bond lengths (or angles).

Mol	Type	Chain	Res	Link	Bond lengths			Bond angles		
					Counts	RMSZ	# Z > 2	Counts	RMSZ	# Z > 2
2	PLP	A	900	1	14,15,16	2.40	4 (28%)	20,22,23	1.72	3 (15%)
2	PLP	B	900	1	14,15,16	1.58	4 (28%)	20,22,23	1.58	2 (10%)
2	PLP	C	900	1	14,15,16	2.14	5 (35%)	20,22,23	1.74	4 (20%)
2	PLP	D	900	1	14,15,16	2.17	6 (42%)	20,22,23	1.59	3 (15%)
2	PLP	E	900	1	14,15,16	1.92	5 (35%)	20,22,23	1.40	3 (15%)
2	PLP	F	900	1	14,15,16	1.40	2 (14%)	20,22,23	1.35	3 (15%)

In the following table, the Chirals column lists the number of chiral outliers, the number of chiral centers analysed, the number of these observed in the model and the number defined in the chemical component dictionary. Similar counts are reported in the Torsion and Rings columns. '-' means no outliers of that kind were identified.

Mol	Type	Chain	Res	Link	Chirals	Torsions	Rings
2	PLP	A	900	1	-	0/6/6/8	0/1/1/1
2	PLP	B	900	1	-	0/6/6/8	0/1/1/1
2	PLP	C	900	1	-	0/6/6/8	0/1/1/1
2	PLP	D	900	1	-	0/6/6/8	0/1/1/1
2	PLP	E	900	1	-	0/6/6/8	0/1/1/1
2	PLP	F	900	1	-	0/6/6/8	0/1/1/1

All (26) bond length outliers are listed below:

Mol	Chain	Res	Type	Atoms	Z	Observed(Å)	Ideal(Å)
2	A	900	PLP	C3-C2	-5.20	1.37	1.40
2	E	900	PLP	C2A-C2	4.87	1.60	1.50
2	A	900	PLP	C2A-C2	4.37	1.59	1.50
2	D	900	PLP	C2-N1	4.13	1.41	1.33
2	C	900	PLP	C2A-C2	4.12	1.58	1.50
2	C	900	PLP	C3-C2	-3.99	1.37	1.40
2	A	900	PLP	C5A-C5	3.84	1.61	1.51
2	D	900	PLP	C5A-C5	3.15	1.59	1.51
2	D	900	PLP	C4-C5	3.12	1.44	1.39
2	C	900	PLP	O4P-C5A	3.02	1.57	1.44
2	D	900	PLP	O4P-C5A	2.93	1.57	1.44
2	B	900	PLP	P-O3P	-2.88	1.44	1.54
2	C	900	PLP	C5A-C5	2.85	1.58	1.51
2	F	900	PLP	C3-C2	-2.73	1.38	1.40
2	B	900	PLP	O4P-C5A	2.61	1.56	1.44
2	A	900	PLP	O4P-C5A	2.58	1.55	1.44
2	D	900	PLP	P-O3P	-2.50	1.45	1.54
2	E	900	PLP	C5A-C5	2.50	1.57	1.51

Continued on next page...

Continued from previous page...

Mol	Chain	Res	Type	Atoms	Z	Observed(Å)	Ideal(Å)
2	D	900	PLP	C6-N1	2.46	1.40	1.34
2	F	900	PLP	O4P-C5A	2.37	1.55	1.44
2	E	900	PLP	O4P-C5A	2.35	1.54	1.44
2	C	900	PLP	P-O3P	-2.22	1.46	1.54
2	B	900	PLP	C6-N1	2.20	1.39	1.34
2	E	900	PLP	C4-C5	2.14	1.42	1.39
2	E	900	PLP	C2-N1	2.13	1.37	1.33
2	B	900	PLP	C3-C2	-2.09	1.39	1.40

All (18) bond angle outliers are listed below:

Mol	Chain	Res	Type	Atoms	Z	Observed(°)	Ideal(°)
2	B	900	PLP	O4P-C5A-C5	5.69	120.83	109.26
2	D	900	PLP	O4P-C5A-C5	5.32	120.09	109.26
2	A	900	PLP	O4P-C5A-C5	5.26	119.96	109.26
2	C	900	PLP	O4P-C5A-C5	4.86	119.14	109.26
2	E	900	PLP	O4P-C5A-C5	3.56	116.50	109.26
2	F	900	PLP	O4P-C5A-C5	3.46	116.30	109.26
2	E	900	PLP	O3P-P-O1P	3.11	120.61	110.44
2	A	900	PLP	O3P-P-O1P	3.02	120.31	110.44
2	C	900	PLP	C2A-C2-C3	2.63	124.22	121.02
2	F	900	PLP	P-O4P-C5A	-2.62	111.78	121.22
2	F	900	PLP	O3P-P-O1P	2.56	118.81	110.44
2	C	900	PLP	O3P-P-O1P	2.45	118.46	110.44
2	D	900	PLP	P-O4P-C5A	-2.45	112.39	121.22
2	B	900	PLP	O3P-P-O1P	2.39	118.26	110.44
2	D	900	PLP	O3P-P-O1P	2.32	118.03	110.44
2	E	900	PLP	P-O4P-C5A	-2.26	113.07	121.22
2	C	900	PLP	C5A-C5-C6	-2.19	115.13	119.28
2	A	900	PLP	P-O4P-C5A	-2.14	113.49	121.22

There are no chirality outliers.

There are no torsion outliers.

There are no ring outliers.

5.7 Other polymers ⓘ

There are no such residues in this entry.

5.8 Polymer linkage issues

There are no chain breaks in this entry.

6 Fit of model and data ⓘ

6.1 Protein, DNA and RNA chains ⓘ

In the following table, the column labelled ‘#RSRZ> 2’ contains the number (and percentage) of RSRZ outliers, followed by percent RSRZ outliers for the chain as percentile scores relative to all X-ray entries and entries of similar resolution. The OWAB column contains the minimum, median, 95th percentile and maximum values of the occupancy-weighted average B-factor per residue. The column labelled ‘Q< 0.9’ lists the number of (and percentage) of residues with an average occupancy less than 0.9.

Mol	Chain	Analysed	<RSRZ>	#RSRZ>2	OWAB(Å ²)	Q<0.9
1	A	510/546 (93%)	-0.16	17 (3%) 44 45	14, 34, 77, 110	0
1	B	515/546 (94%)	-0.33	9 (1%) 67 69	10, 31, 70, 105	0
1	C	516/546 (94%)	-0.27	11 (2%) 60 63	13, 33, 65, 120	0
1	D	514/546 (94%)	-0.23	11 (2%) 60 63	14, 34, 71, 115	0
1	E	512/546 (93%)	0.01	18 (3%) 42 43	16, 41, 76, 110	0
1	F	523/546 (95%)	-0.21	10 (1%) 64 66	16, 35, 70, 118	0
All	All	3090/3276 (94%)	-0.20	76 (2%) 54 57	10, 34, 74, 120	0

All (76) RSRZ outliers are listed below:

Mol	Chain	Res	Type	RSRZ
1	A	214	ALA	10.1
1	D	535	LEU	9.0
1	E	490	GLY	8.3
1	C	14	PHE	7.7
1	A	23	ILE	7.3
1	A	21	ILE	6.5
1	E	528	GLY	6.4
1	F	23	ILE	5.5
1	C	16	LEU	5.3
1	F	14	PHE	5.2
1	E	489	PHE	4.8
1	B	489	PHE	4.4
1	B	529	GLN	4.3
1	D	491	SER	4.3
1	B	528	GLY	4.1
1	A	490	GLY	4.1
1	C	529	GLN	4.0
1	B	492	ASN	4.0
1	A	213	LEU	3.9

Continued on next page...

Continued from previous page...

Mol	Chain	Res	Type	RSRZ
1	C	18	ASP	3.9
1	D	23	ILE	3.8
1	E	20	LEU	3.8
1	E	492	ASN	3.7
1	E	22	LYS	3.6
1	A	492	ASN	3.6
1	F	24	ALA	3.5
1	A	215	GLN	3.4
1	D	533	LEU	3.4
1	E	18	ASP	3.4
1	A	22	LYS	3.3
1	D	214	ALA	3.3
1	E	21	ILE	3.3
1	E	241	LEU	3.3
1	A	491	SER	3.2
1	B	24	ALA	3.1
1	C	492	ASN	3.1
1	B	23	ILE	3.0
1	E	488	GLY	3.0
1	A	19	GLU	2.9
1	E	487	ARG	2.8
1	F	533	LEU	2.8
1	A	25	SER	2.7
1	E	23	ILE	2.7
1	C	23	ILE	2.6
1	D	534	LYS	2.6
1	F	531	GLN	2.5
1	F	13	PRO	2.5
1	B	488	GLY	2.4
1	A	487	ARG	2.4
1	F	462	ALA	2.4
1	A	523	TYR	2.4
1	E	24	ALA	2.4
1	A	527	SER	2.4
1	B	16	LEU	2.4
1	E	275	ALA	2.3
1	F	16	LEU	2.3
1	C	24	ALA	2.3
1	D	28	GLY	2.3
1	E	234	PRO	2.2
1	A	20	LEU	2.2
1	C	489	PHE	2.2

Continued on next page...

Continued from previous page...

Mol	Chain	Res	Type	RSRZ
1	F	489	PHE	2.2
1	C	21	ILE	2.2
1	E	71	THR	2.2
1	D	532	ASN	2.2
1	F	473	PHE	2.2
1	A	193	ALA	2.2
1	B	490	GLY	2.2
1	D	531	GLN	2.2
1	D	213	LEU	2.1
1	E	473	PHE	2.1
1	E	229	LEU	2.1
1	C	17	LYS	2.0
1	C	491	SER	2.0
1	D	490	GLY	2.0
1	A	24	ALA	2.0

6.2 Non-standard residues in protein, DNA, RNA chains ⓘ

There are no non-standard protein/DNA/RNA residues in this entry.

6.3 Carbohydrates ⓘ

There are no carbohydrates in this entry.

6.4 Ligands ⓘ

In the following table, the Atoms column lists the number of modelled atoms in the group and the number defined in the chemical component dictionary. LLDF column lists the quality of electron density of the group with respect to its neighbouring residues in protein, DNA or RNA chains. The B-factors column lists the minimum, median, 95th percentile and maximum values of B factors of atoms in the group. The column labelled 'Q< 0.9' lists the number of atoms with occupancy less than 0.9.

Mol	Type	Chain	Res	Atoms	RSR	LLDF	B-factors(Å ²)	Q<0.9
2	PLP	B	900	15/16	0.14	0.36	26,28,30,31	0
2	PLP	E	900	15/16	0.17	0.25	25,37,39,39	0
2	PLP	C	900	15/16	0.16	0.01	23,25,29,31	0
2	PLP	A	900	15/16	0.14	-0.06	24,32,35,35	0
2	PLP	F	900	15/16	0.14	-0.23	26,30,32,32	0
2	PLP	D	900	15/16	0.14	-0.32	25,28,30,30	0

6.5 Other polymers ⓘ

There are no such residues in this entry.