



# wwPDB X-ray Structure Validation Summary Report i

Feb 28, 2014 – 11:43 PM GMT

PDB ID : 2ZZ0  
Title : Crystal structure of human thioredoxin reductase I (SeCys 498 Cys)  
Authors : Lo, Y.C.; Ko, T.P.; Wang, A.H.J.  
Deposited on : 2009-02-02  
Resolution : 2.80 Å(reported)

This is a wwPDB validation summary report for a publicly released PDB entry.

We welcome your comments at [validation@mail.wwpdb.org](mailto:validation@mail.wwpdb.org)

A user guide is available at <http://wwpdb.org/ValidationPDFNotes.html>

---

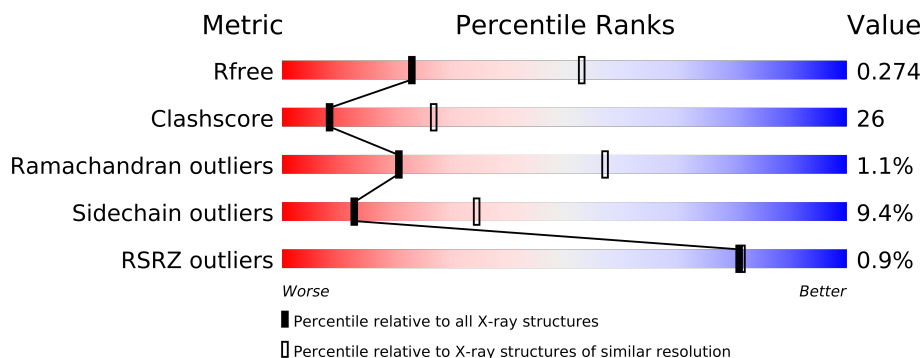
The following versions of software and data (see [references](#)) were used in the production of this report:

MolProbity	:	4.02b-467
Mogul	:	1.15 2013
Xtriage (Phenix)	:	dev-1323
EDS	:	stable22639
Percentile statistics	:	21963
Refmac	:	5.8.0049
CCP4	:	6.3.0 (Settle)
Ideal geometry (proteins)	:	Engh & Huber (2001)
Ideal geometry (DNA, RNA)	:	Parkinson et. al. (1996)
Validation Pipeline (wwPDB-VP)	:	stable22683

# 1 Overall quality at a glance

The reported resolution of this entry is 2.80 Å.

Percentile scores (ranging between 0-100) for global validation metrics of the entry are shown in the following graphic. The table shows the number of entries on which the scores are based.



Metric	Whole archive (#Entries)	Similar resolution (#Entries, resolution range(Å))
$R_{free}$	66092	1799 (2.80-2.80)
Clashscore	79885	2295 (2.80-2.80)
Ramachandran outliers	78287	2252 (2.80-2.80)
Sidechain outliers	78261	2254 (2.80-2.80)
RSRZ outliers	66119	1802 (2.80-2.80)

The table below summarises the geometric issues observed across the polymeric chains and their fit to the electron density. The red, orange, yellow and green segments on the lower bar indicate the fraction of residues that contain outliers for  $\geq 3$ , 2, 1 and 0 types of geometric quality criteria. The upper red bar (where present) indicates the fraction of residues that have poor fit to the electron density.

Mol	Chain	Length	Quality of chain
1	A	513	
1	B	513	
1	C	513	
1	D	513	

## 2 Entry composition

There are 4 unique types of molecules in this entry. The entry contains 15818 atoms, of which 0 are hydrogen and 0 are deuterium.

In the tables below, the ZeroOcc column contains the number of atoms modelled with zero occupancy, the AltConf column contains the number of residues with at least one atom in alternate conformation and the Trace column contains the number of residues modelled with at most 2 atoms.

- Molecule 1 is a protein called Thioredoxin reductase 1, cytoplasmic.

Mol	Chain	Residues	Atoms					ZeroOcc	AltConf	Trace
1	A	491	Total	C	N	O	S	0	0	0
			3785	2403	647	714	21			
1	B	487	Total	C	N	O	S	0	0	0
			3765	2396	642	708	19			
1	C	487	Total	C	N	O	S	0	0	0
			3765	2396	642	708	19			
1	D	484	Total	C	N	O	S	0	0	0
			3741	2379	638	705	19			

There are 56 discrepancies between the modelled and reference sequences:

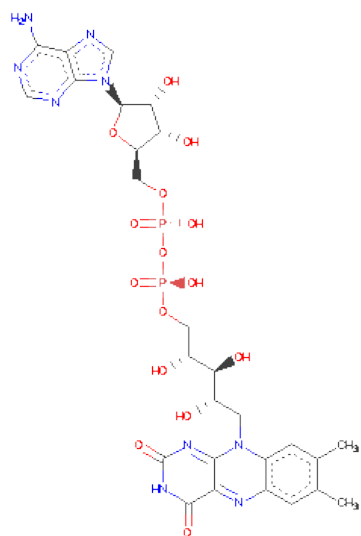
Chain	Residue	Modelled	Actual	Comment	Reference
A	-13	MET	-	EXPRESSION TAG	UNP Q16881
A	-12	ALA	-	EXPRESSION TAG	UNP Q16881
A	-11	HIS	-	EXPRESSION TAG	UNP Q16881
A	-10	HIS	-	EXPRESSION TAG	UNP Q16881
A	-9	HIS	-	EXPRESSION TAG	UNP Q16881
A	-8	HIS	-	EXPRESSION TAG	UNP Q16881
A	-7	HIS	-	EXPRESSION TAG	UNP Q16881
A	-6	HIS	-	EXPRESSION TAG	UNP Q16881
A	-5	VAL	-	EXPRESSION TAG	UNP Q16881
A	-4	ASP	-	EXPRESSION TAG	UNP Q16881
A	-3	ASP	-	EXPRESSION TAG	UNP Q16881
A	-2	ASP	-	EXPRESSION TAG	UNP Q16881
A	-1	ASP	-	EXPRESSION TAG	UNP Q16881
A	498	CYS	U	SEE REMARK 999	UNP Q16881
B	-13	MET	-	EXPRESSION TAG	UNP Q16881
B	-12	ALA	-	EXPRESSION TAG	UNP Q16881
B	-11	HIS	-	EXPRESSION TAG	UNP Q16881
B	-10	HIS	-	EXPRESSION TAG	UNP Q16881
B	-9	HIS	-	EXPRESSION TAG	UNP Q16881
B	-8	HIS	-	EXPRESSION TAG	UNP Q16881
B	-7	HIS	-	EXPRESSION TAG	UNP Q16881

*Continued on next page...*

*Continued from previous page...*

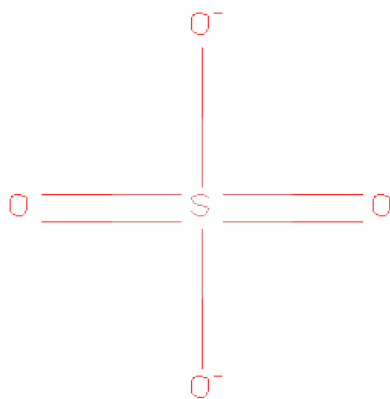
Chain	Residue	Modelled	Actual	Comment	Reference
B	-6	HIS	-	EXPRESSION TAG	UNP Q16881
B	-5	VAL	-	EXPRESSION TAG	UNP Q16881
B	-4	ASP	-	EXPRESSION TAG	UNP Q16881
B	-3	ASP	-	EXPRESSION TAG	UNP Q16881
B	-2	ASP	-	EXPRESSION TAG	UNP Q16881
B	-1	ASP	-	EXPRESSION TAG	UNP Q16881
B	498	CYS	U	SEE REMARK 999	UNP Q16881
C	-13	MET	-	EXPRESSION TAG	UNP Q16881
C	-12	ALA	-	EXPRESSION TAG	UNP Q16881
C	-11	HIS	-	EXPRESSION TAG	UNP Q16881
C	-10	HIS	-	EXPRESSION TAG	UNP Q16881
C	-9	HIS	-	EXPRESSION TAG	UNP Q16881
C	-8	HIS	-	EXPRESSION TAG	UNP Q16881
C	-7	HIS	-	EXPRESSION TAG	UNP Q16881
C	-6	HIS	-	EXPRESSION TAG	UNP Q16881
C	-5	VAL	-	EXPRESSION TAG	UNP Q16881
C	-4	ASP	-	EXPRESSION TAG	UNP Q16881
C	-3	ASP	-	EXPRESSION TAG	UNP Q16881
C	-2	ASP	-	EXPRESSION TAG	UNP Q16881
C	-1	ASP	-	EXPRESSION TAG	UNP Q16881
C	498	CYS	U	SEE REMARK 999	UNP Q16881
D	-13	MET	-	EXPRESSION TAG	UNP Q16881
D	-12	ALA	-	EXPRESSION TAG	UNP Q16881
D	-11	HIS	-	EXPRESSION TAG	UNP Q16881
D	-10	HIS	-	EXPRESSION TAG	UNP Q16881
D	-9	HIS	-	EXPRESSION TAG	UNP Q16881
D	-8	HIS	-	EXPRESSION TAG	UNP Q16881
D	-7	HIS	-	EXPRESSION TAG	UNP Q16881
D	-6	HIS	-	EXPRESSION TAG	UNP Q16881
D	-5	VAL	-	EXPRESSION TAG	UNP Q16881
D	-4	ASP	-	EXPRESSION TAG	UNP Q16881
D	-3	ASP	-	EXPRESSION TAG	UNP Q16881
D	-2	ASP	-	EXPRESSION TAG	UNP Q16881
D	-1	ASP	-	EXPRESSION TAG	UNP Q16881
D	498	CYS	U	SEE REMARK 999	UNP Q16881

- Molecule 2 is FLAVIN-ADENINE DINUCLEOTIDE (three-letter code: FAD) (formula: C<sub>27</sub>H<sub>33</sub>N<sub>9</sub>O<sub>15</sub>P<sub>2</sub>).



Mol	Chain	Residues	Atoms					ZeroOcc	AltConf
2	A	1	Total	C	N	O	P	0	0
			53	27	9	15	2		
2	B	1	Total	C	N	O	P	0	0
			53	27	9	15	2		
2	C	1	Total	C	N	O	P	0	0
			53	27	9	15	2		
2	D	1	Total	C	N	O	P	0	0
			53	27	9	15	2		

- Molecule 3 is SULFATE ION (three-letter code: SO4) (formula: O<sub>4</sub>S).



Mol	Chain	Residues	Atoms			ZeroOcc	AltConf
3	A	1	Total	O	S	0	0
			5	4	1		
3	B	1	Total	O	S	0	0
			5	4	1		
3	C	1	Total	O	S	0	0
			5	4	1		
3	D	1	Total	O	S	0	0
			5	4	1		

- Molecule 4 is water.

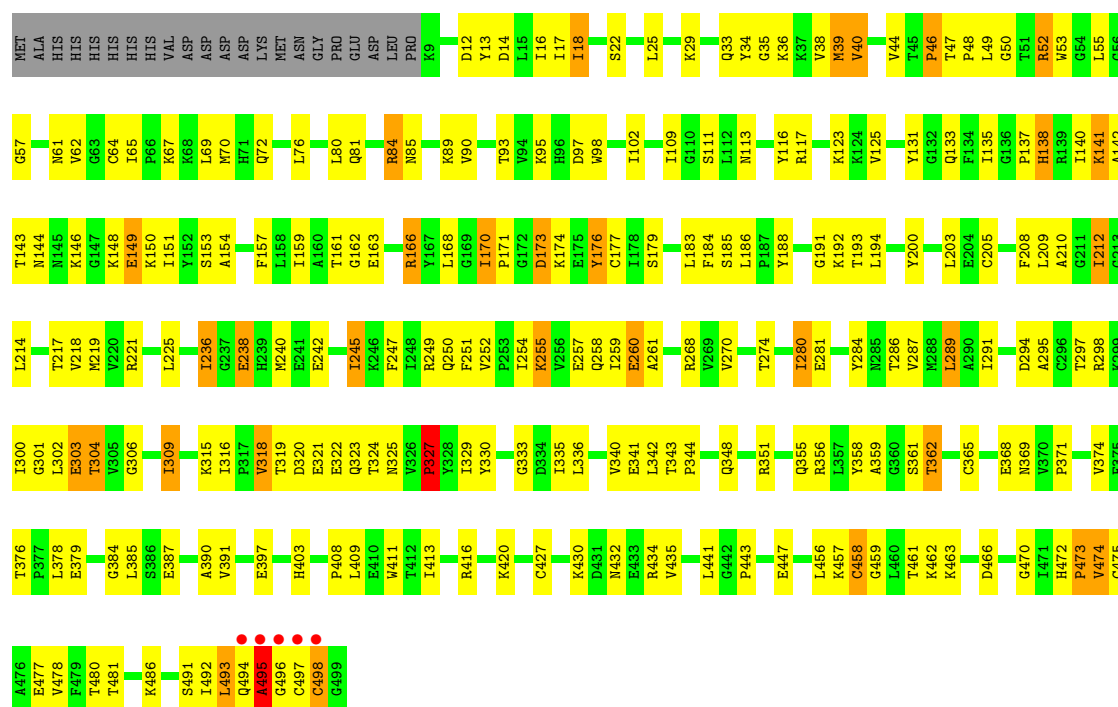
Mol	Chain	Residues	Atoms		ZeroOcc	AltConf
4	A	162	Total	O	0	0
			162	162		
4	B	137	Total	O	0	0
			137	137		
4	C	123	Total	O	0	0
			123	123		
4	D	108	Total	O	0	0
			108	108		

### 3 Residue-property plots


These plots are drawn for all protein, RNA and DNA chains in the entry. The first graphic for a chain summarises the proportions of errors displayed in the second graphic. The second graphic shows the sequence view annotated by issues in geometry and electron density. Residues are color-coded according to the number of geometric quality criteria for which they contain at least one outlier: green = 0, yellow = 1, orange = 2 and red = 3 or more. A red dot above a residue indicates a poor fit to the electron density ( $RSRZ > 2$ ). Stretches of 2 or more consecutive residues without any outlier are shown as a green connector. Residues present in the sample, but not in the model, are shown in grey.

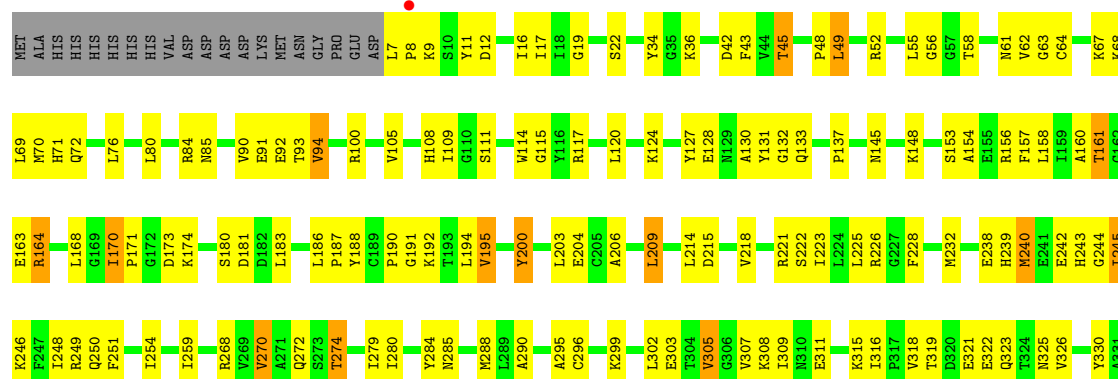
- Molecule 1: Thioredoxin reductase 1, cytoplasmic

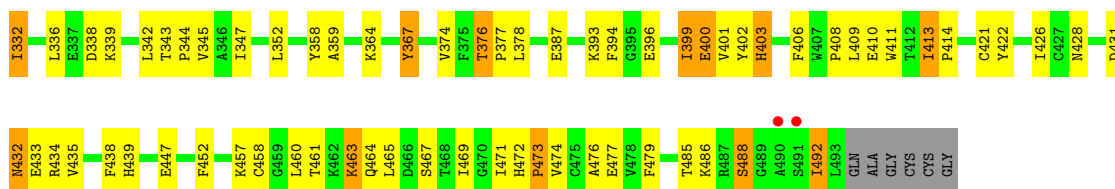
Chain A: 



- Molecule 1: Thioredoxin reductase 1, cytoplasmic

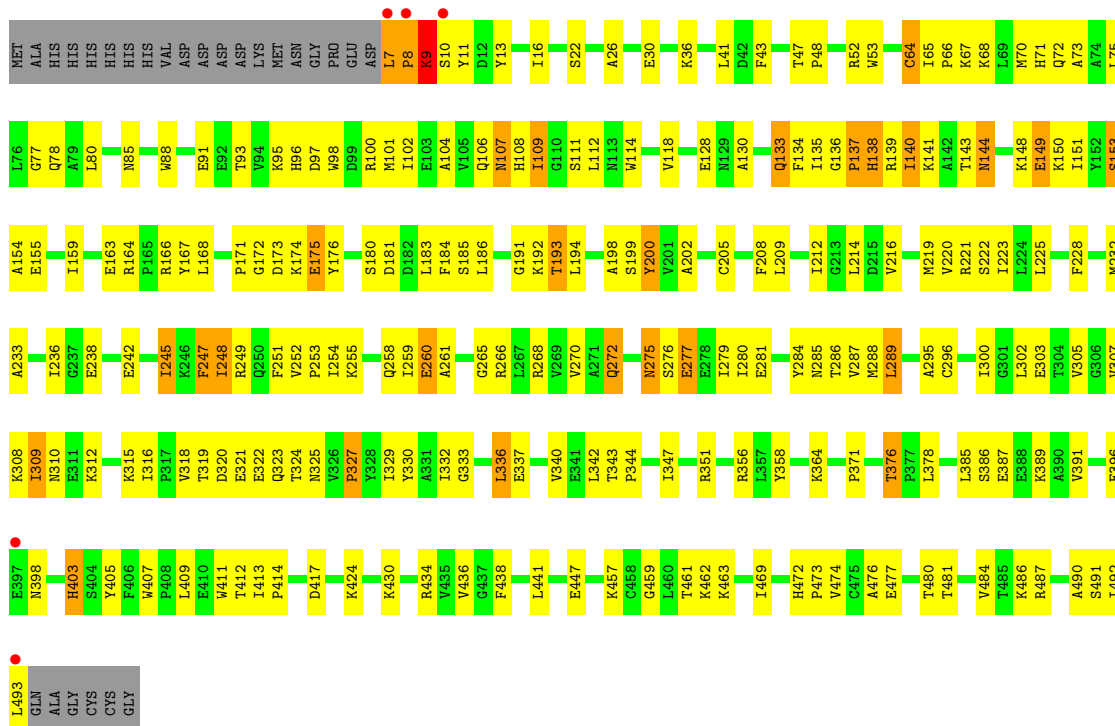
Chain B: 





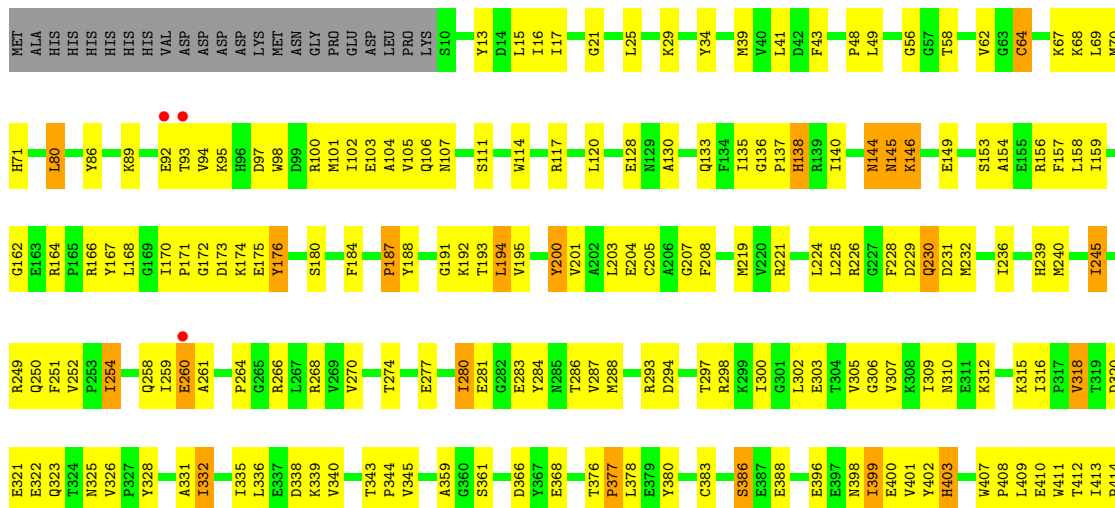
• Molecule 1: Thioredoxin reductase 1, cytoplasmic

Chain C:



• Molecule 1: Thioredoxin reductase 1, cytoplasmic

Chain D:





Y422	A423	K424	I425	I426	C427	N428	E433	R434	G446	E447	L456	K457	T461	K462	K463	Q464	L465	I471	H472	P473	V474	C475	A476	E477	V478	F479	T480	T481	L482	K486	R487	S488	G489	A490	S491	I492	L493	GLN	ALA	GLY	CYS	CYS	GLY
------	------	------	------	------	------	------	------	------	------	------	------	------	------	------	------	------	------	------	------	------	------	------	------	------	------	------	------	------	------	------	------	------	------	------	------	------	------	-----	-----	-----	-----	-----	-----

## 4 Data and refinement statistics

Property	Value	Source
Space group	C 2 2 21	Depositor
Cell constants a, b, c, $\alpha$ , $\beta$ , $\gamma$	121.09Å 135.41Å 345.80Å 90.00° 90.00° 90.00°	Depositor
Resolution (Å)	30.00 – 2.80 29.55 – 2.80	Depositor EDS
% Data completeness (in resolution range)	91.0 (30.00-2.80) 90.9 (29.55-2.80)	Depositor EDS
$R_{merge}$	0.07	Depositor
$R_{sym}$	(Not available)	Depositor
$\langle I/\sigma(I) \rangle$ <sup>1</sup>	1.85 (at 2.80Å)	Xtriage
Refinement program	CNS 1.1	Depositor
R, $R_{free}$	0.220 , 0.277 0.217 , 0.274	Depositor DCC
$R_{free}$ test set	3229 reflections (5.06%)	DCC
Wilson B-factor (Å <sup>2</sup> )	53.5	Xtriage
Anisotropy	0.358	Xtriage
Bulk solvent $k_{sol}$ (e/Å <sup>3</sup> ), $B_{sol}$ (Å <sup>2</sup> )	0.30 , 20.8	EDS
Estimated twinning fraction	No twinning to report.	Xtriage
L-test for twinning	$\langle  L  \rangle = 0.47$ , $\langle L^2 \rangle = 0.30$	Xtriage
Outliers	0 of 64014 reflections	Xtriage
$F_o, F_c$ correlation	0.93	EDS
Total number of atoms	15818	wwPDB-VP
Average B, all atoms (Å <sup>2</sup> )	47.0	wwPDB-VP

Xtriage's analysis on translational NCS is as follows: *The largest off-origin peak in the Patterson function is 2.45% of the height of the origin peak. No significant pseudotranslation is detected.*

<sup>1</sup>Intensities estimated from amplitudes.

## 5 Model quality

### 5.1 Standard geometry

Bond lengths and bond angles in the following residue types are not validated in this section: SO4, FAD

The Z score for a bond length (or angle) is the number of standard deviations the observed value is removed from the expected value. A bond length (or angle) with  $|Z| > 5$  is considered an outlier worth inspection. RMSZ is the root-mean-square of all Z scores of the bond lengths (or angles).

Mol	Chain	Bond lengths		Bond angles	
		RMSZ	$\# Z  > 5$	RMSZ	$\# Z  > 5$
1	A	0.94	3/3859 (0.1%)	0.99	10/5222 (0.2%)
1	B	0.98	2/3840 (0.1%)	1.01	9/5200 (0.2%)
1	C	0.94	3/3840 (0.1%)	0.98	1/5200 (0.0%)
1	D	0.92	3/3815 (0.1%)	0.94	1/5166 (0.0%)
All	All	0.95	11/15354 (0.1%)	0.98	21/20788 (0.1%)

Chiral center outliers are detected by calculating the chiral volume of a chiral center and verifying if the center is modelled as a planar moiety or with the opposite hand. A planarity outlier is detected by checking planarity of atoms in a peptide group, atoms in a mainchain group or atoms of a sidechain that are expected to be planar.

Mol	Chain	#Chirality outliers	#Planarity outliers
1	A	0	1
1	B	0	2
1	C	0	1
1	D	0	1
All	All	0	5

The worst 5 of 11 bond length outliers are listed below:

Mol	Chain	Res	Type	Atoms	Z	Observed(Å)	Ideal(Å)
1	C	53	TRP	CB-CG	-7.36	1.36	1.50
1	B	200	TYR	CE2-CZ	6.48	1.47	1.38
1	C	296	CYS	CB-SG	-6.26	1.71	1.82
1	C	175	GLU	CG-CD	6.07	1.61	1.51
1	D	383	CYS	CB-SG	-5.82	1.72	1.81

The worst 5 of 21 bond angle outliers are listed below:

Mol	Chain	Res	Type	Atoms	Z	Observed(°)	Ideal(°)
1	B	200	TYR	CA-CB-CG	7.71	128.04	113.40
1	B	164	ARG	NE-CZ-NH1	7.49	124.05	120.30
1	D	164	ARG	NE-CZ-NH1	-7.29	116.66	120.30
1	A	289	LEU	CA-CB-CG	7.21	131.88	115.30
1	A	495	ALA	C-N-CA	-6.93	107.74	122.30

There are no chirality outliers.

All (5) planarity outliers are listed below:

Mol	Chain	Res	Type	Group
1	A	176	TYR	Sidechain
1	B	188	TYR	Sidechain
1	B	402	TYR	Sidechain
1	C	200	TYR	Sidechain
1	D	176	TYR	Sidechain

## 5.2 Close contacts ⓘ

In the following table, the Non-H and H(model) columns list the number of non-hydrogen atoms and hydrogen atoms in the chain respectively. The H(added) column lists the number of hydrogens added by MolProbity. The Clashes column lists the number of clashes within the asymmetric unit, and the number in parentheses is this value normalized per 1000 atoms of the molecule in the chain. The Symm-Clashes column gives symmetry related clashes, in the same way as for the Clashes column.

Mol	Chain	Non-H	H(model)	H(added)	Clashes	Symm-Clashes
1	A	3785	0	3793	197	0
1	B	3765	0	3782	196	0
1	C	3765	0	3782	232	0
1	D	3741	0	3751	208	0
2	A	53	0	31	1	0
2	B	53	0	31	0	0
2	C	53	0	31	1	0
2	D	53	0	31	0	0
3	A	5	0	0	0	0
3	B	5	0	0	1	0
3	C	5	0	0	0	0
3	D	5	0	0	0	0
4	A	162	0	0	6	0
4	B	137	0	0	2	0
4	C	123	0	0	2	0
4	D	108	0	0	4	0

*Continued on next page...*

*Continued from previous page...*

Mol	Chain	Non-H	H(model)	H(added)	Clashes	Symm-Clashes
All	All	15818	0	15232	799	0

Clashscore is defined as the number of clashes calculated for the entry per 1000 atoms (including hydrogens) of the entry. The overall clashscore for this entry is 26.

The worst 5 of 799 close contacts within the same asymmetric unit are listed below.

Atom-1	Atom-2	Distance(Å)	Clash(Å)
1:B:308:LYS:N	1:B:325:ASN:HD21	1.40	1.18
1:B:308:LYS:H	1:B:325:ASN:ND2	1.45	1.15
1:D:270:VAL:HG22	1:D:281:GLU:HG2	1.31	1.13
1:D:461:THR:HG22	1:D:464:GLN:H	1.07	1.13
1:B:308:LYS:HB2	1:B:325:ASN:HD22	1.07	1.07

There are no symmetry-related clashes.

## 5.3 Torsion angles

### 5.3.1 Protein backbone ⓘ

In the following table, the Percentiles column shows the percent Ramachandran outliers of the chain as a percentile score with respect to all X-ray entries followed by that with respect to entries of similar resolution. The Analysed column shows the number of residues for which the backbone conformation was analysed, and the total number of residues.

Mol	Chain	Analysed	Favoured	Allowed	Outliers	Percentiles	
1	A	489/513 (95%)	442 (90%)	40 (8%)	7 (1%)	16	49
1	B	485/513 (94%)	441 (91%)	40 (8%)	4 (1%)	27	65
1	C	485/513 (94%)	435 (90%)	43 (9%)	7 (1%)	16	49
1	D	482/513 (94%)	437 (91%)	41 (8%)	4 (1%)	27	65
All	All	1941/2052 (95%)	1755 (90%)	164 (8%)	22 (1%)	21	57

5 of 22 Ramachandran outliers are listed below:

Mol	Chain	Res	Type
1	A	495	ALA
1	C	9	LYS
1	C	138	HIS
1	A	138	HIS
1	B	476	ALA

### 5.3.2 Protein sidechains ⓘ

In the following table, the Percentiles column shows the percent sidechain outliers of the chain as a percentile score with respect to all X-ray entries followed by that with respect to entries of similar resolution. The Analysed column shows the number of residues for which the sidechain conformation was analysed, and the total number of residues.

Mol	Chain	Analysed	Rotameric	Outliers	Percentiles	
1	A	402/422 (95%)	359 (89%)	43 (11%)	10	26
1	B	401/422 (95%)	361 (90%)	40 (10%)	11	30
1	C	401/422 (95%)	366 (91%)	35 (9%)	15	39
1	D	398/422 (94%)	365 (92%)	33 (8%)	16	42
All	All	1602/1688 (95%)	1451 (91%)	151 (9%)	13	34

5 of 151 residues with a non-rotameric sidechain are listed below:

Mol	Chain	Res	Type
1	B	305	VAL
1	C	9	LYS
1	D	368	GLU
1	B	347	ILE
1	B	403	HIS

Some sidechains can be flipped to improve hydrogen bonding and reduce clashes. 5 of 29 such sidechains are listed below:

Mol	Chain	Res	Type
1	C	133	GLN
1	C	258	GLN
1	D	258	GLN
1	C	144	ASN
1	C	272	GLN

### 5.3.3 RNA ⓘ

There are no RNA chains in this entry.

## 5.4 Non-standard residues in protein, DNA, RNA chains ⓘ

There are no non-standard protein/DNA/RNA residues in this entry.

## 5.5 Carbohydrates ⓘ

There are no carbohydrates in this entry.

## 5.6 Ligand geometry ⓘ

8 ligands are modelled in this entry.

In the following table, the Counts columns list the number of bonds (or angles) for which Mogul statistics could be retrieved, the number of bonds (or angles) that are observed in the model and the number of bonds (or angles) that are defined in the chemical component dictionary. The Link column lists molecule types, if any, to which the group is linked. The Z score for a bond length (or angle) is the number of standard deviations the observed value is removed from the expected value. A bond length (or angle) with  $|Z| > 2$  is considered an outlier worth inspection. RMSZ is the root-mean-square of all Z scores of the bond lengths (or angles).

Mol	Type	Chain	Res	Link	Bond lengths			Bond angles		
					Counts	RMSZ	# $ Z  > 2$	Counts	RMSZ	# $ Z  > 2$
2	FAD	A	900	-	58,58,58	1.67	12 (20%)	85,89,89	2.09	15 (17%)
3	SO4	A	901	-	4,4,4	0.58	0	6,6,6	0.63	0
2	FAD	B	900	-	58,58,58	1.73	9 (15%)	85,89,89	2.10	17 (20%)
3	SO4	B	901	-	4,4,4	0.49	0	6,6,6	0.49	0
2	FAD	C	900	-	58,58,58	1.76	12 (20%)	85,89,89	2.13	18 (21%)
3	SO4	C	901	-	4,4,4	0.64	0	6,6,6	0.43	0
2	FAD	D	900	-	58,58,58	1.55	6 (10%)	85,89,89	1.97	17 (20%)
3	SO4	D	901	-	4,4,4	0.40	0	6,6,6	0.41	0

In the following table, the Chirals column lists the number of chiral outliers, the number of chiral centers analysed, the number of these observed in the model and the number defined in the chemical component dictionary. Similar counts are reported in the Torsion and Rings columns. '-' means no outliers of that kind were identified.

Mol	Type	Chain	Res	Link	Chirals	Torsions	Rings
2	FAD	A	900	-	-	0/34/50/50	0/1/6/6
3	SO4	A	901	-	-	0/0/0/0	0/0/0/0
2	FAD	B	900	-	-	0/34/50/50	0/1/6/6
3	SO4	B	901	-	-	0/0/0/0	0/0/0/0
2	FAD	C	900	-	-	0/34/50/50	0/1/6/6
3	SO4	C	901	-	-	0/0/0/0	0/0/0/0
2	FAD	D	900	-	-	0/34/50/50	0/1/6/6
3	SO4	D	901	-	-	0/0/0/0	0/0/0/0

The worst 5 of 39 bond length outliers are listed below:

Mol	Chain	Res	Type	Atoms	Z	Observed(Å)	Ideal(Å)
2	C	900	FAD	C4-C4X	6.95	1.52	1.41
2	B	900	FAD	C4-C4X	6.62	1.52	1.41
2	D	900	FAD	C4-C4X	5.94	1.50	1.41
2	A	900	FAD	C4X-C10	5.50	1.50	1.40
2	D	900	FAD	C4X-C10	5.48	1.50	1.40

The worst 5 of 67 bond angle outliers are listed below:

Mol	Chain	Res	Type	Atoms	Z	Observed(°)	Ideal(°)
2	C	900	FAD	N3A-C2A-N1A	-8.60	121.52	128.71
2	B	900	FAD	C2-N1-C10	8.55	123.59	114.98
2	A	900	FAD	N3A-C2A-N1A	-8.43	121.66	128.71
2	D	900	FAD	N3A-C2A-N1A	-7.90	122.11	128.71
2	C	900	FAD	C2-N1-C10	7.72	122.76	114.98

There are no chirality outliers.

There are no torsion outliers.

There are no ring outliers.

## 5.7 Other polymers ⓘ

There are no such residues in this entry.

## 5.8 Polymer linkage issues

There are no chain breaks in this entry.



## 6 Fit of model and data ⓘ

### 6.1 Protein, DNA and RNA chains ⓘ

In the following table, the column labelled ‘#RSRZ> 2’ contains the number (and percentage) of RSRZ outliers, followed by percent RSRZ outliers for the chain as percentile scores relative to all X-ray entries and entries of similar resolution. The OWAB column contains the minimum, median, 95<sup>th</sup> percentile and maximum values of the occupancy-weighted average B-factor per residue. The column labelled ‘Q< 0.9’ lists the number of (and percentage) of residues with an average occupancy less than 0.9.

Mol	Chain	Analysed	<RSRZ>	#RSRZ>2	OWAB(Å <sup>2</sup> )	Q<0.9
1	A	491/513 (95%)	-0.45	5 (1%) 79 79	21, 45, 65, 112	0
1	B	487/513 (94%)	-0.55	3 (0%) 86 88	21, 41, 65, 95	0
1	C	487/513 (94%)	-0.38	5 (1%) 79 79	27, 49, 69, 104	0
1	D	484/513 (94%)	-0.43	4 (0%) 83 83	25, 48, 73, 96	0
All	All	1949/2052 (94%)	-0.45	17 (0%) 81 81	21, 46, 69, 112	0

The worst 5 of 17 RSRZ outliers are listed below:

Mol	Chain	Res	Type	RSRZ
1	A	497	CYS	7.1
1	A	495	ALA	5.4
1	C	7	LEU	4.8
1	B	8	PRO	4.8
1	B	490	ALA	3.9

### 6.2 Non-standard residues in protein, DNA, RNA chains ⓘ

There are no non-standard protein/DNA/RNA residues in this entry.

### 6.3 Carbohydrates ⓘ

There are no carbohydrates in this entry.

### 6.4 Ligands ⓘ

In the following table, the Atoms column lists the number of modelled atoms in the group and the number defined in the chemical component dictionary. LLDF column lists the quality of electron density of the group with respect to its neighbouring residues in protein, DNA or RNA chains. The B-factors column lists the minimum, median, 95<sup>th</sup> percentile and maximum values of B factors

of atoms in the group. The column labelled 'Q < 0.9' lists the number of atoms with occupancy less than 0.9.

Mol	Type	Chain	Res	Atoms	RSR	LLDF	B-factors( $\text{\AA}^2$ )	Q<0.9
2	FAD	A	900	53/53	0.18	0.53	37,49,55,56	0
2	FAD	C	900	53/53	0.16	0.10	39,45,53,53	0
2	FAD	D	900	53/53	0.14	-0.35	27,33,48,49	0
2	FAD	B	900	53/53	0.13	-0.37	23,28,39,40	0
3	SO4	D	901	5/5	0.14	-0.80	71,73,74,75	0
3	SO4	A	901	5/5	0.11	-1.24	68,69,71,71	0
3	SO4	B	901	5/5	0.10	-1.31	63,65,66,66	0
3	SO4	C	901	5/5	0.09	-2.64	67,67,68,68	0

## 6.5 Other polymers ⓘ

There are no such residues in this entry.