



# Full wwPDB X-ray Structure Validation Report

Apr 7, 2014 – 05:24 PM EDT

PDB ID : 4O7D  
Title : Crystal structure of human glutaminase in complex DON  
Authors : Thangavelu, K.; Sivaraman, J.  
Deposited on : 2013-12-24  
Resolution : 2.30 Å(reported)

This is a full wwPDB validation report for a publicly released PDB entry.  
We welcome your comments at [validation@mail.wwpdb.org](mailto:validation@mail.wwpdb.org)  
A user guide is available at <http://wwpdb.org/ValidationPDFNotes.html>

---

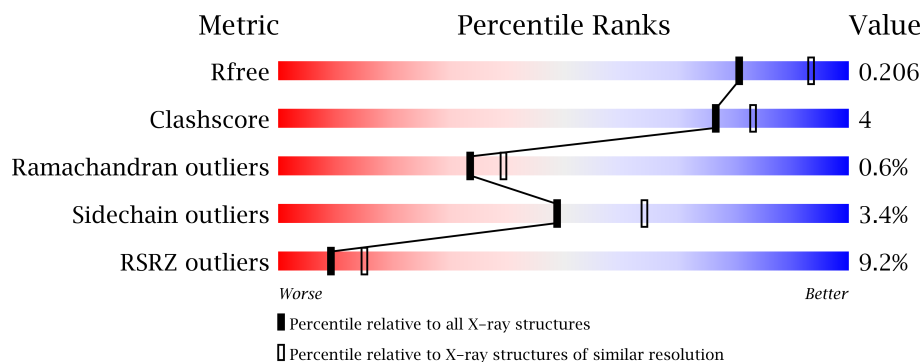
The following versions of software and data (see [references](#)) were used in the production of this report:

MolProbity : 4.02b-467  
Mogul : **FAILED**  
Xtriage (Phenix) : dev-1439  
EDS : stable22978  
Percentile statistics : 21963  
Refmac : 5.8.0049  
CCP4 : 6.3.0 (Settle)  
Ideal geometry (proteins) : Engh & Huber (2001)  
Ideal geometry (DNA, RNA) : Parkinson et. al. (1996)  
Validation Pipeline (wwPDB-VP) : stable22978

# 1 Overall quality at a glance

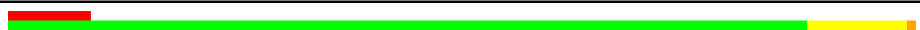
The reported resolution of this entry is 2.30 Å.

Percentile scores (ranging between 0-100) for global validation metrics of the entry are shown in the following graphic. The table shows the number of entries on which the scores are based.



Metric	Whole archive (#Entries)	Similar resolution (#Entries, resolution range(Å))
$R_{free}$	66092	2929 (2.30-2.30)
Clashscore	79885	3679 (2.30-2.30)
Ramachandran outliers	78287	3642 (2.30-2.30)
Sidechain outliers	78261	3641 (2.30-2.30)
RSRZ outliers	66119	2930 (2.30-2.30)

The table below summarises the geometric issues observed across the polymeric chains and their fit to the electron density. The red, orange, yellow and green segments on the lower bar indicate the fraction of residues that contain outliers for  $\geq 3$ , 2, 1 and 0 types of geometric quality criteria. The upper red bar (where present) indicates the fraction of residues that have poor fit to the electron density.

Mol	Chain	Length	Quality of chain
1	A	313	

## 2 Entry composition i

There are 3 unique types of molecules in this entry. The entry contains 2508 atoms, of which 0 are hydrogen and 0 are deuterium.

In the tables below, the ZeroOcc column contains the number of atoms modelled with zero occupancy, the AltConf column contains the number of residues with at least one atom in alternate conformation and the Trace column contains the number of residues modelled with at most 2 atoms.

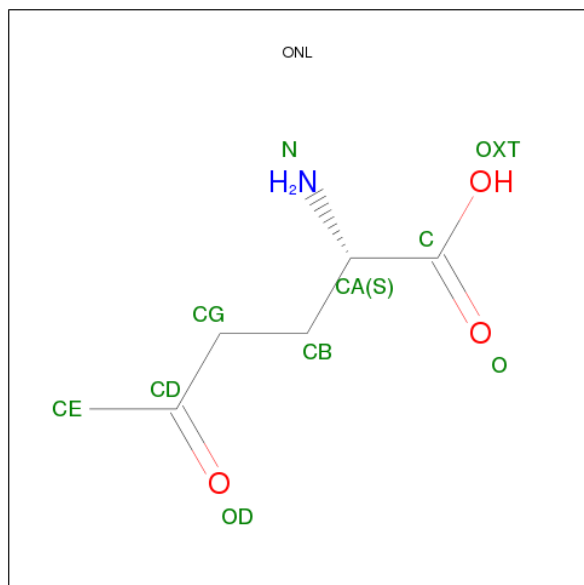
- Molecule 1 is a protein called Glutaminase kidney isoform, mitochondrial.

Mol	Chain	Residues	Atoms					ZeroOcc	AltConf	Trace
			Total	C	N	O	S			
1	A	313	2412	1536	399	453	24	0	0	0

There are 2 discrepancies between the modelled and reference sequences:

Chain	Residue	Modelled	Actual	Comment	Reference
A	219	SER	-	EXPRESSION TAG	UNP O94925
A	220	MET	-	EXPRESSION TAG	UNP O94925

- Molecule 2 is 5-OXO-L-NORLEUCINE (three-letter code: ONL) (formula:  $C_6H_{11}NO_3$ ).



Mol	Chain	Residues	Atoms				ZeroOcc	AltConf
			Total	C	N	O		
2	A	1	10	6	1	3	0	0

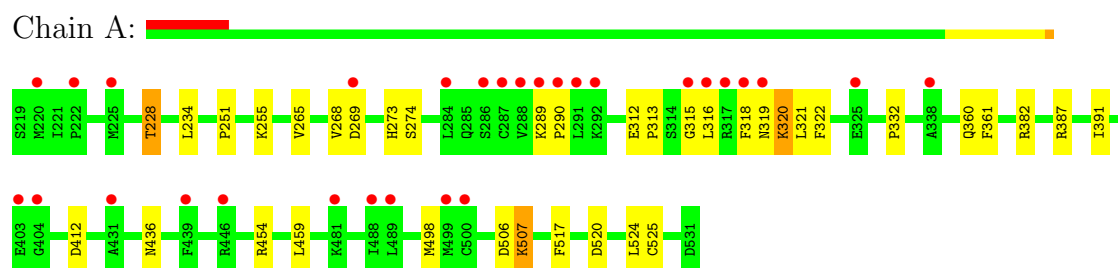
- Molecule 3 is water.

Mol	Chain	Residues	Atoms		ZeroOcc	AltConf
3	A	86	Total	O	0	0
			86	86		

### 3 Residue-property plots

These plots are drawn for all protein, RNA and DNA chains in the entry. The first graphic for a chain summarises the proportions of errors displayed in the second graphic. The second graphic shows the sequence view annotated by issues in geometry and electron density. Residues are color-coded according to the number of geometric quality criteria for which they contain at least one outlier: green = 0, yellow = 1, orange = 2 and red = 3 or more. A red dot above a residue indicates a poor fit to the electron density ( $RSRZ > 2$ ). Stretches of 2 or more consecutive residues without any outlier are shown as a green connector. Residues present in the sample, but not in the model, are shown in grey.

- Molecule 1: Glutaminase kidney isoform, mitochondrial



## 4 Data and refinement statistics

Property	Value	Source
Space group	I 41 2 2	Depositor
Cell constants a, b, c, $\alpha$ , $\beta$ , $\gamma$	139.28Å 139.28Å 155.50Å 90.00° 90.00° 90.00°	Depositor
Resolution (Å)	25.77 – 2.30 29.15 – 2.30	Depositor EDS
% Data completeness (in resolution range)	99.6 (25.77-2.30) 99.3 (29.15-2.30)	Depositor EDS
$R_{merge}$	(Not available)	Depositor
$R_{sym}$	(Not available)	Depositor
$\langle I/\sigma(I) \rangle$ <sup>1</sup>	3.26 (at 2.29Å)	Xtriage
Refinement program	PHENIX (phenix.refine: 1.7.1_743)	Depositor
R, $R_{free}$	0.193 , 0.211 0.182 , 0.206	Depositor DCC
$R_{free}$ test set	1715 reflections (5.05%)	DCC
Wilson B-factor (Å <sup>2</sup> )	46.5	Xtriage
Anisotropy	0.460	Xtriage
Bulk solvent $k_{sol}$ (e/Å <sup>3</sup> ), $B_{sol}$ (Å <sup>2</sup> )	0.35 , 36.6	EDS
Estimated twinning fraction	No twinning to report.	Xtriage
L-test for twinning	$\langle  L  \rangle = 0.49$ , $\langle L^2 \rangle = 0.32$	Xtriage
Outliers	0 of 34092 reflections	Xtriage
$F_o, F_c$ correlation	0.96	EDS
Total number of atoms	2508	wwPDB-VP
Average B, all atoms (Å <sup>2</sup> )	54.0	wwPDB-VP

Xtriage's analysis on translational NCS is as follows: *The largest off-origin peak in the Patterson function is 4.70% of the height of the origin peak. No significant pseudotranslation is detected.*

<sup>1</sup>Intensities estimated from amplitudes.

## 5 Model quality

### 5.1 Standard geometry

Bond lengths and bond angles in the following residue types are not validated in this section: ONL

The Z score for a bond length (or angle) is the number of standard deviations the observed value is removed from the expected value. A bond length (or angle) with  $|Z| > 5$  is considered an outlier worth inspection. RMSZ is the root-mean-square of all Z scores of the bond lengths (or angles).

Mol	Chain	Bond lengths		Bond angles	
		RMSZ	$\# Z  > 5$	RMSZ	$\# Z  > 5$
1	A	0.39	0/2471	0.51	0/3340

There are no bond length outliers.

There are no bond angle outliers.

There are no chirality outliers.

There are no planarity outliers.

### 5.2 Close contacts

In the following table, the Non-H and H(model) columns list the number of non-hydrogen atoms and hydrogen atoms in the chain respectively. The H(added) column lists the number of hydrogens added by MolProbity. The Clashes column lists the number of clashes within the asymmetric unit, and the number in parentheses is this value normalized per 1000 atoms of the molecule in the chain. The Symm-Clashes column gives symmetry related clashes, in the same way as for the Clashes column.

Mol	Chain	Non-H	H(model)	H(added)	Clashes	Symm-Clashes
1	A	2412	0	2343	18	0
2	A	10	0	8	0	0
3	A	86	0	0	1	0
All	All	2508	0	2351	18	0

Clashscore is defined as the number of clashes calculated for the entry per 1000 atoms (including hydrogens) of the entry. The overall clashscore for this entry is 4.

All (18) close contacts within the same asymmetric unit are listed below.

Atom-1	Atom-2	Distance(Å)	Clash(Å)
1:A:274:SER:OG	3:A:774:HOH:O	2.01	0.75

*Continued on next page...*

*Continued from previous page...*

Atom-1	Atom-2	Distance(Å)	Clash(Å)
1:A:506:ASP:HB2	1:A:507:LYS:HE2	1.70	0.73
1:A:321:LEU:HD13	1:A:391:ILE:HG12	1.73	0.70
1:A:498:MET:HE1	1:A:517:PHE:HE2	1.61	0.66
1:A:382:ARG:HD3	1:A:412:ASP:OD1	2.06	0.56
1:A:268:VAL:HG13	1:A:436:ASN:OD1	2.06	0.55
1:A:228:THR:HG23	1:A:273:HIS:CE1	2.42	0.54
1:A:289:LYS:N	1:A:290:PRO:HD2	2.23	0.52
1:A:319:ASN:O	1:A:387:ARG:NH1	2.43	0.52
1:A:265:VAL:HG22	1:A:498:MET:HG2	1.94	0.50
1:A:312:GLU:HB2	1:A:313:PRO:HD2	1.95	0.47
1:A:332:PRO:HD2	1:A:459:LEU:HD13	1.96	0.47
1:A:320:LYS:NZ	1:A:320:LYS:HB2	2.30	0.47
1:A:524:LEU:HD23	1:A:525:CYS:SG	2.55	0.46
1:A:498:MET:HE1	1:A:517:PHE:CE2	2.47	0.46
1:A:251:PRO:O	1:A:255:LYS:HG3	2.18	0.44
1:A:234:LEU:HD22	1:A:520:ASP:HB3	1.99	0.44
1:A:507:LYS:CD	1:A:507:LYS:H	2.32	0.41

There are no symmetry-related clashes.

## 5.3 Torsion angles

### 5.3.1 Protein backbone ⓘ

In the following table, the Percentiles column shows the percent Ramachandran outliers of the chain as a percentile score with respect to all X-ray entries followed by that with respect to entries of similar resolution. The Analysed column shows the number of residues for which the backbone conformation was analysed, and the total number of residues.

Mol	Chain	Analysed	Favoured	Allowed	Outliers	Percentiles	
1	A	311/313 (99%)	300 (96%)	9 (3%)	2 (1%)	33	39

All (2) Ramachandran outliers are listed below:

Mol	Chain	Res	Type
1	A	316	LEU
1	A	315	GLY



### 5.3.2 Protein sidechains ⓘ

In the following table, the Percentiles column shows the percent sidechain outliers of the chain as a percentile score with respect to all X-ray entries followed by that with respect to entries of similar resolution. The Analysed column shows the number of residues for which the sidechain conformation was analysed, and the total number of residues.

Mol	Chain	Analysed	Rotameric	Outliers	Percentiles
1	A	266/266 (100%)	257 (97%)	9 (3%)	49 64

All (9) residues with a non-rotameric sidechain are listed below:

Mol	Chain	Res	Type
1	A	228	THR
1	A	269	ASP
1	A	318	PHE
1	A	320	LYS
1	A	322	PHE
1	A	360	GLN
1	A	361	PHE
1	A	454	ARG
1	A	507	LYS

Some sidechains can be flipped to improve hydrogen bonding and reduce clashes. There are no such sidechains identified.

### 5.3.3 RNA ⓘ

There are no RNA chains in this entry.

## 5.4 Non-standard residues in protein, DNA, RNA chains ⓘ

Mogul failed to run properly - this section will therefore be empty.

## 5.5 Carbohydrates ⓘ

Mogul failed to run properly - this section will therefore be empty.

## 5.6 Ligand geometry ⓘ

Mogul failed to run properly - this section will therefore be empty.

## 5.7 Other polymers ⓘ

Mogul failed to run properly - this section will therefore be empty.

## 5.8 Polymer linkage issues

There are no chain breaks in this entry.

## 6 Fit of model and data ⓘ

### 6.1 Protein, DNA and RNA chains ⓘ

In the following table, the column labelled ‘#RSRZ> 2’ contains the number (and percentage) of RSRZ outliers, followed by percent RSRZ outliers for the chain as percentile scores relative to all X-ray entries and entries of similar resolution. The OWAB column contains the minimum, median, 95<sup>th</sup> percentile and maximum values of the occupancy-weighted average B-factor per residue. The column labelled ‘Q< 0.9’ lists the number of (and percentage) of residues with an average occupancy less than 0.9.

Mol	Chain	Analysed	<RSRZ>	#RSRZ>2	OWAB(Å <sup>2</sup> )	Q<0.9
1	A	313/313 (100%)	0.17	29 (9%) 9 14	35, 49, 84, 119	0

All (29) RSRZ outliers are listed below:

Mol	Chain	Res	Type	RSRZ
1	A	315	GLY	5.5
1	A	317	ARG	5.2
1	A	316	LEU	4.3
1	A	288	VAL	4.2
1	A	489	LEU	3.9
1	A	287	CYS	3.9
1	A	319	ASN	3.1
1	A	289	LYS	2.9
1	A	284	LEU	2.9
1	A	269	ASP	2.9
1	A	318	PHE	2.9
1	A	431	ALA	2.8
1	A	499	MET	2.8
1	A	290	PRO	2.6
1	A	291	LEU	2.6
1	A	222	PRO	2.5
1	A	286	SER	2.5
1	A	225	MET	2.4
1	A	325	GLU	2.4
1	A	404	GLY	2.3
1	A	220	MET	2.3
1	A	403	GLU	2.3
1	A	481	LYS	2.3
1	A	446	ARG	2.3
1	A	500	CYS	2.2
1	A	292	LYS	2.2
1	A	488	ILE	2.1

*Continued on next page...*

*Continued from previous page...*

Mol	Chain	Res	Type	RSRZ
1	A	338	ALA	2.1
1	A	439	PHE	2.0

## 6.2 Non-standard residues in protein, DNA, RNA chains

There are no non-standard protein/DNA/RNA residues in this entry.

## 6.3 Carbohydrates

There are no carbohydrates in this entry.

## 6.4 Ligands

In the following table, the Atoms column lists the number of modelled atoms in the group and the number defined in the chemical component dictionary. LLDF column lists the quality of electron density of the group with respect to its neighbouring residues in protein, DNA or RNA chains. The B-factors column lists the minimum, median, 95<sup>th</sup> percentile and maximum values of B factors of atoms in the group. The column labelled 'Q< 0.9' lists the number of atoms with occupancy less than 0.9.

Mol	Type	Chain	Res	Atoms	RSR	LLDF	B-factors(Å <sup>2</sup> )	Q<0.9
2	ONL	A	601	10/10	0.22	0.26	39,49,64,73	0

## 6.5 Other polymers

There are no such residues in this entry.