



Full wwPDB X-ray Structure Validation Report ⓘ

Feb 1, 2016 – 07:14 AM GMT

PDB ID : 3A1E
Title : Crystal structure of the P- and N-domains of His462Gln mutant CopA, a copper-transporting P-type ATPase, bound with AMPPCP-Mg
Authors : Tsuda, T.; Toyoshima, C.
Deposited on : 2009-03-31
Resolution : 1.95 Å(reported)

This is a Full wwPDB X-ray Structure Validation Report for a publicly released PDB entry.
We welcome your comments at validation@mail.wwpdb.org
A user guide is available at
<http://wwpdb.org/validation/2016/XrayValidationReportHelp>
with specific help available everywhere you see the ⓘ symbol.

The following versions of software and data (see [references ⓘ](#)) were used in the production of this report:

MolProbity : 4.02b-467
Mogul : 1.7 (RC4), CSD as536be (2015)
Xtriage (Phenix) : 1.9-1692
EDS : rb-20026688
Percentile statistics : 20151230.v01 (using entries in the PDB archive December 30th 2015)
Refmac : 5.8.0135
CCP4 : 6.5.0
Ideal geometry (proteins) : Engh & Huber (2001)
Ideal geometry (DNA, RNA) : Parkinson et al. (1996)
Validation Pipeline (wwPDB-VP) : trunk26865

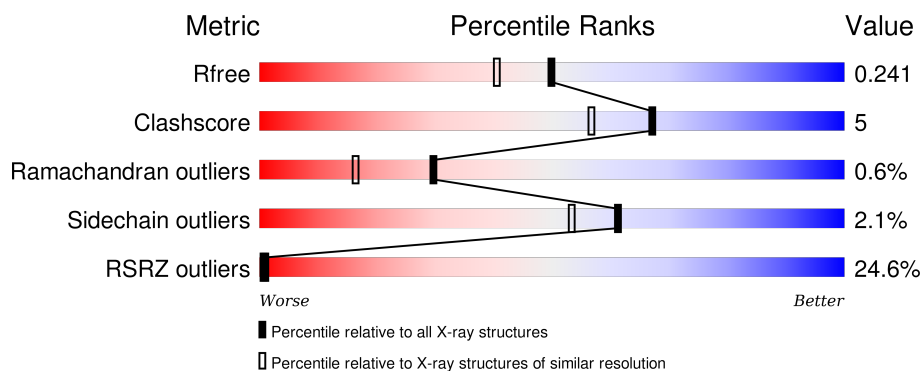
1 Overall quality at a glance

The following experimental techniques were used to determine the structure:

X-RAY DIFFRACTION

The reported resolution of this entry is 1.95 Å.

Percentile scores (ranging between 0-100) for global validation metrics of the entry are shown in the following graphic. The table shows the number of entries on which the scores are based.



Metric	Whole archive (#Entries)	Similar resolution (#Entries, resolution range(Å))
R_{free}	91344	1833 (1.96-1.96)
Clashscore	102246	1953 (1.96-1.96)
Ramachandran outliers	100387	1936 (1.96-1.96)
Sidechain outliers	100360	1936 (1.96-1.96)
RSRZ outliers	91569	1835 (1.96-1.96)

The table below summarises the geometric issues observed across the polymeric chains and their fit to the electron density. The red, orange, yellow and green segments on the lower bar indicate the fraction of residues that contain outliers for ≥ 3 , 2, 1 and 0 types of geometric quality criteria. A grey segment represents the fraction of residues that are not modelled. The numeric value for each fraction is indicated below the corresponding segment, with a dot representing fractions $\leq 5\%$. The upper red bar (where present) indicates the fraction of residues that have poor fit to the electron density. The numeric value is given above the bar.

Mol	Chain	Length	Quality of chain
1	A	287	<div> <div>16%</div> <div>86%</div> <div>7%</div> <div>7%</div> </div>
1	B	287	<div> <div>30%</div> <div>80%</div> <div>12%</div> <div>5%</div> </div>

2 Entry composition

There are 4 unique types of molecules in this entry. The entry contains 4411 atoms, of which 0 are hydrogens and 0 are deuteriums.

In the tables below, the ZeroOcc column contains the number of atoms modelled with zero occupancy, the AltConf column contains the number of residues with at least one atom in alternate conformation and the Trace column contains the number of residues modelled with at most 2 atoms.

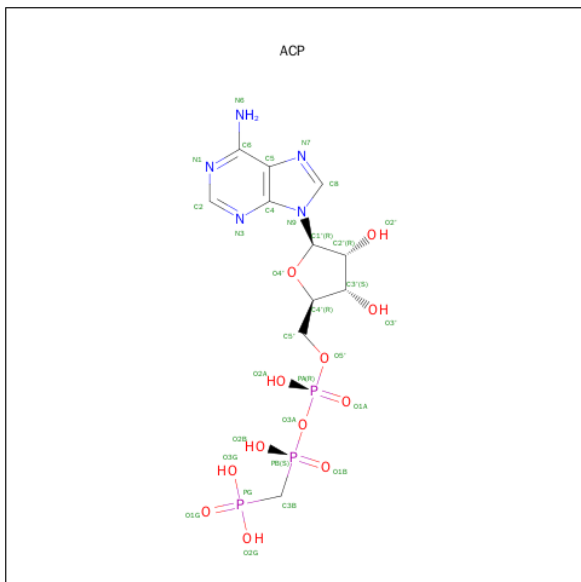
- Molecule 1 is a protein called Probable copper-exporting P-type ATPase A.

Mol	Chain	Residues	Atoms					ZeroOcc	AltConf	Trace
1	A	268	Total	C	N	O	S	0	0	0
			2003	1254	349	397	3			
1	B	272	Total	C	N	O	S	0	0	0
			2028	1268	353	403	4			

There are 24 discrepancies between the modelled and reference sequences:

Chain	Residue	Modelled	Actual	Comment	Reference
A	387	MET	-	EXPRESSION TAG	UNP O29777
A	388	GLY	-	EXPRESSION TAG	UNP O29777
A	389	HIS	-	EXPRESSION TAG	UNP O29777
A	390	HIS	-	EXPRESSION TAG	UNP O29777
A	391	HIS	-	EXPRESSION TAG	UNP O29777
A	392	HIS	-	EXPRESSION TAG	UNP O29777
A	393	HIS	-	EXPRESSION TAG	UNP O29777
A	394	HIS	-	EXPRESSION TAG	UNP O29777
A	395	GLY	-	EXPRESSION TAG	UNP O29777
A	396	SER	-	EXPRESSION TAG	UNP O29777
A	397	ARG	-	EXPRESSION TAG	UNP O29777
A	462	GLN	HIS	ENGINEERED	UNP O29777
B	387	MET	-	EXPRESSION TAG	UNP O29777
B	388	GLY	-	EXPRESSION TAG	UNP O29777
B	389	HIS	-	EXPRESSION TAG	UNP O29777
B	390	HIS	-	EXPRESSION TAG	UNP O29777
B	391	HIS	-	EXPRESSION TAG	UNP O29777
B	392	HIS	-	EXPRESSION TAG	UNP O29777
B	393	HIS	-	EXPRESSION TAG	UNP O29777
B	394	HIS	-	EXPRESSION TAG	UNP O29777
B	395	GLY	-	EXPRESSION TAG	UNP O29777
B	396	SER	-	EXPRESSION TAG	UNP O29777
B	397	ARG	-	EXPRESSION TAG	UNP O29777
B	462	GLN	HIS	ENGINEERED	UNP O29777

- Molecule 2 is PHOSPHOMETHYLPHOSPHONIC ACID ADENYLATE ESTER (three-letter code: ACP) (formula: $C_{11}H_{18}N_5O_{12}P_3$).



Mol	Chain	Residues	Atoms					ZeroOcc	AltConf
2	A	1	Total	C	N	O	P	0	0
			31	11	5	12	3		
2	B	1	Total	C	N	O	P	0	0
			31	11	5	12	3		

- Molecule 3 is MAGNESIUM ION (three-letter code: MG) (formula: Mg).

Mol	Chain	Residues	Atoms		ZeroOcc	AltConf
3	A	1	Total	Mg	0	0
			1	1		

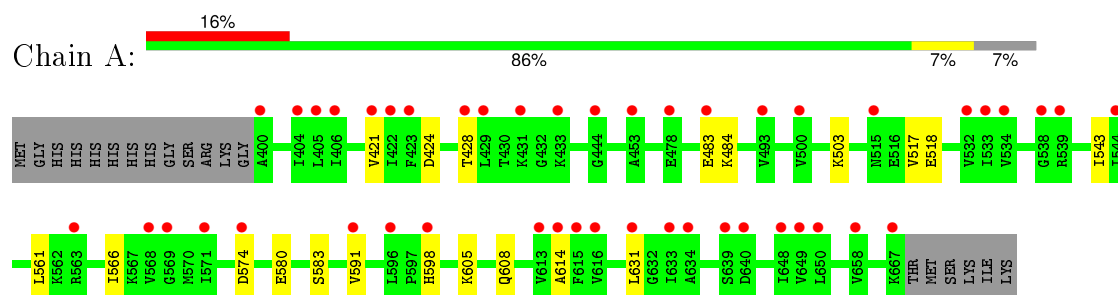
- Molecule 4 is water.

Mol	Chain	Residues	Atoms		ZeroOcc	AltConf
4	A	204	Total	O	0	0
			204	204		
4	B	113	Total	O	0	0
			113	113		

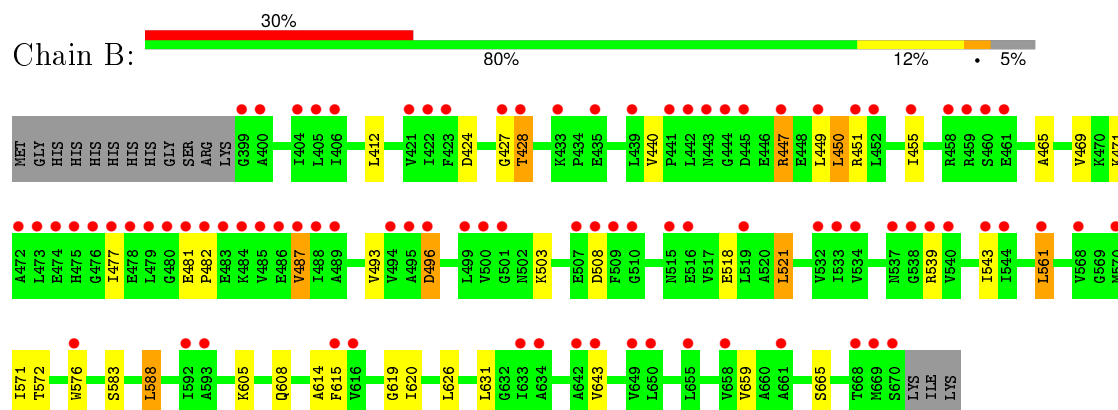
3 Residue-property plots

These plots are drawn for all protein, RNA and DNA chains in the entry. The first graphic for a chain summarises the proportions of errors displayed in the second graphic. The second graphic shows the sequence view annotated by issues in geometry and electron density. Residues are color-coded according to the number of geometric quality criteria for which they contain at least one outlier: green = 0, yellow = 1, orange = 2 and red = 3 or more. A red dot above a residue indicates a poor fit to the electron density ($RSRZ > 2$). Stretches of 2 or more consecutive residues without any outlier are shown as a green connector. Residues present in the sample, but not in the model, are shown in grey.

- Molecule 1: Probable copper-exporting P-type ATPase A



- Molecule 1: Probable copper-exporting P-type ATPase A



4 Data and refinement statistics

Property	Value	Source
Space group	P 43 2 2	Depositor
Cell constants a, b, c, α , β , γ	90.53 Å 90.53 Å 191.22 Å 90.00° 90.00° 90.00°	Depositor
Resolution (Å)	20.00 – 1.95 27.42 – 1.95	Depositor EDS
% Data completeness (in resolution range)	100.0 (20.00-1.95) 99.9 (27.42-1.95)	Depositor EDS
R_{merge}	0.06	Depositor
R_{sym}	(Not available)	Depositor
$\langle I/\sigma(I) \rangle$ ¹	3.13 (at 1.95 Å)	Xtriage
Refinement program	REFMAC 5.2.0019	Depositor
R, R_{free}	0.208 , 0.245 0.205 , 0.241	Depositor DCC
R_{free} test set	2963 reflections (5.32%)	DCC
Wilson B-factor (Å ²)	43.6	Xtriage
Anisotropy	0.089	Xtriage
Bulk solvent k_{sol} (e/Å ³), B_{sol} (Å ²)	0.35 , 57.4	EDS
Estimated twinning fraction	No twinning to report.	Xtriage
L-test for twinning ²	$\langle L \rangle = 0.50$, $\langle L^2 \rangle = 0.34$	Xtriage
Outliers	0 of 58710 reflections	Xtriage
F_o, F_c correlation	0.95	EDS
Total number of atoms	4411	wwPDB-VP
Average B, all atoms (Å ²)	49.0	wwPDB-VP

Xtriage's analysis on translational NCS is as follows: *The largest off-origin peak in the Patterson function is 3.63% of the height of the origin peak. No significant pseudotranslation is detected.*

¹Intensities estimated from amplitudes.

²Theoretical values of $\langle |L| \rangle$, $\langle L^2 \rangle$ for acentric reflections are 0.5, 0.375 respectively for untwinned datasets, and 0.333, 0.2 for perfectly twinned datasets.

5 Model quality [i](#)

5.1 Standard geometry [i](#)

Bond lengths and bond angles in the following residue types are not validated in this section: MG, ACP

The Z score for a bond length (or angle) is the number of standard deviations the observed value is removed from the expected value. A bond length (or angle) with $|Z| > 5$ is considered an outlier worth inspection. RMSZ is the root-mean-square of all Z scores of the bond lengths (or angles).

Mol	Chain	Bond lengths		Bond angles	
		RMSZ	$\# Z > 5$	RMSZ	$\# Z > 5$
1	A	0.52	0/2016	0.64	0/2722
1	B	0.63	3/2041 (0.1%)	0.65	2/2755 (0.1%)
All	All	0.58	3/4057 (0.1%)	0.64	2/5477 (0.0%)

All (3) bond length outliers are listed below:

Mol	Chain	Res	Type	Atoms	Z	Observed(Å)	Ideal(Å)
1	B	447	ARG	CZ-NH1	9.78	1.45	1.33
1	B	447	ARG	NE-CZ	6.21	1.41	1.33
1	B	496	ASP	C-O	-5.66	1.12	1.23

All (2) bond angle outliers are listed below:

Mol	Chain	Res	Type	Atoms	Z	Observed(°)	Ideal(°)
1	B	447	ARG	NE-CZ-NH1	10.71	125.66	120.30
1	B	447	ARG	NE-CZ-NH2	-7.39	116.61	120.30

There are no chirality outliers.

There are no planarity outliers.

5.2 Too-close contacts [i](#)

In the following table, the Non-H and H(model) columns list the number of non-hydrogen atoms and hydrogen atoms in the chain respectively. The H(added) column lists the number of hydrogen atoms added and optimized by MolProbity. The Clashes column lists the number of clashes within the asymmetric unit, whereas Symm-Clashes lists symmetry related clashes.

Mol	Chain	Non-H	H(model)	H(added)	Clashes	Symm-Clashes
1	A	2003	0	2091	14	0

Continued on next page...

Continued from previous page...

Mol	Chain	Non-H	H(model)	H(added)	Clashes	Symm-Clashes
1	B	2028	0	2116	27	0
2	A	31	0	14	0	0
2	B	31	0	14	1	0
3	A	1	0	0	0	0
4	A	204	0	0	1	0
4	B	113	0	0	1	0
All	All	4411	0	4235	40	0

The all-atom clashscore is defined as the number of clashes found per 1000 atoms (including hydrogen atoms). The all-atom clashscore for this structure is 5.

All (40) close contacts within the same asymmetric unit are listed below, sorted by their clash magnitude.

Atom-1	Atom-2	Interatomic distance (Å)	Clash overlap (Å)
1:B:427:GLY:O	1:B:428:THR:OG1	1.84	0.92
1:B:447:ARG:HG2	1:B:477:ILE:HD11	1.68	0.73
1:A:605:LYS:HA	1:A:608:GLN:HE21	1.53	0.72
1:A:583:SER:HB2	1:A:591:VAL:HG21	1.70	0.72
1:B:427:GLY:C	1:B:428:THR:HG1	1.91	0.71
1:A:574:ASP:HB3	4:A:1132:HOH:O	1.95	0.66
1:B:619:GLY:HA2	1:B:626:LEU:HD11	1.79	0.64
1:B:561:LEU:HD13	1:B:659:VAL:HG22	1.82	0.61
1:A:503:LYS:NZ	1:A:503:LYS:HB3	2.17	0.59
1:B:605:LYS:HA	1:B:608:GLN:HE21	1.70	0.55
1:A:580:GLU:HG3	1:B:576:TRP:CZ3	2.42	0.54
1:B:465:ALA:O	1:B:469:VAL:HG23	2.08	0.54
1:A:583:SER:HB2	1:A:591:VAL:CG2	2.37	0.54
1:A:483:GLU:HG2	1:A:484:LYS:HG3	1.90	0.53
1:B:619:GLY:HA2	1:B:626:LEU:CD1	2.38	0.52
1:B:440:VAL:HB	1:B:543:ILE:HG12	1.91	0.52
1:B:424:ASP:O	1:B:428:THR:HB	2.10	0.52
1:B:428:THR:N	4:B:1360:HOH:O	2.42	0.51
1:B:451:ARG:O	1:B:455:ILE:HG12	2.11	0.50
1:B:583:SER:HA	1:B:588:LEU:HD22	1.91	0.50
1:A:421:VAL:HG23	1:A:566:ILE:HG21	1.92	0.50
1:B:503:LYS:HD2	1:B:518:GLU:OE1	2.13	0.49
1:A:503:LYS:CB	1:A:503:LYS:NZ	2.78	0.47
1:A:503:LYS:HZ3	1:A:503:LYS:HB3	1.79	0.47
1:A:424:ASP:O	1:A:428:THR:HB	2.14	0.47
1:B:571:ILE:HG21	1:B:615:PHE:HE1	1.80	0.47
1:B:620:ILE:HD11	1:B:643:VAL:HG23	1.99	0.45

Continued on next page...

Continued from previous page...

Atom-1	Atom-2	Interatomic distance (Å)	Clash overlap (Å)
1:B:614:ALA:HA	1:B:631:LEU:O	2.17	0.44
1:B:451:ARG:HB2	1:B:477:ILE:HD12	1.99	0.43
1:A:614:ALA:HA	1:A:631:LEU:O	2.20	0.42
1:B:450:LEU:HD11	1:B:471:LYS:HG3	2.02	0.42
1:B:447:ARG:NH1	1:B:477:ILE:HD13	2.33	0.42
1:A:503:LYS:HE2	1:A:518:GLU:OE2	2.20	0.42
1:B:521:LEU:HD13	1:B:543:ILE:HG21	2.02	0.42
1:B:572:THR:HA	2:B:997:ACP:O3G	2.20	0.42
1:B:412:LEU:O	1:B:665:SER:HB2	2.20	0.41
1:B:487:VAL:HG22	1:B:493:VAL:HG12	2.03	0.41
1:A:517:VAL:HG13	1:A:543:ILE:HD11	2.02	0.40
1:B:481:GLU:HA	1:B:482:PRO:HD3	1.97	0.40
1:B:451:ARG:HA	1:B:477:ILE:HG21	2.02	0.40

There are no symmetry-related clashes.

5.3 Torsion angles [i](#)

5.3.1 Protein backbone [i](#)

In the following table, the Percentiles column shows the percent Ramachandran outliers of the chain as a percentile score with respect to all X-ray entries followed by that with respect to entries of similar resolution.

The Analysed column shows the number of residues for which the backbone conformation was analysed, and the total number of residues.

Mol	Chain	Analysed	Favoured	Allowed	Outliers	Percentiles	
1	A	266/287 (93%)	263 (99%)	3 (1%)	0	100	100
1	B	270/287 (94%)	262 (97%)	5 (2%)	3 (1%)	17	6
All	All	536/574 (93%)	525 (98%)	8 (2%)	3 (1%)	30	16

All (3) Ramachandran outliers are listed below:

Mol	Chain	Res	Type
1	B	428	THR
1	B	496	ASP
1	B	487	VAL

5.3.2 Protein sidechains ⓘ

In the following table, the Percentiles column shows the percent sidechain outliers of the chain as a percentile score with respect to all X-ray entries followed by that with respect to entries of similar resolution.

The Analysed column shows the number of residues for which the sidechain conformation was analysed, and the total number of residues.

Mol	Chain	Analysed	Rotameric	Outliers	Percentiles	
1	A	212/228 (93%)	210 (99%)	2 (1%)	84	83
1	B	215/228 (94%)	208 (97%)	7 (3%)	45	32
All	All	427/456 (94%)	418 (98%)	9 (2%)	61	53

All (9) residues with a non-rotameric sidechain are listed below:

Mol	Chain	Res	Type
1	A	561	LEU
1	A	598	HIS
1	B	449	LEU
1	B	450	LEU
1	B	508	ASP
1	B	521	LEU
1	B	539	ARG
1	B	561	LEU
1	B	588	LEU

Some sidechains can be flipped to improve hydrogen bonding and reduce clashes. All (8) such sidechains are listed below:

Mol	Chain	Res	Type
1	A	587	ASN
1	A	598	HIS
1	A	608	GLN
1	A	628	GLN
1	B	515	ASN
1	B	608	GLN
1	B	628	GLN
1	B	663	GLN

5.3.3 RNA ⓘ

There are no RNA molecules in this entry.

5.4 Non-standard residues in protein, DNA, RNA chains [i](#)

There are no non-standard protein/DNA/RNA residues in this entry.

5.5 Carbohydrates [i](#)

There are no carbohydrates in this entry.

5.6 Ligand geometry [i](#)

Of 3 ligands modelled in this entry, 1 is monoatomic - leaving 2 for Mogul analysis.

In the following table, the Counts columns list the number of bonds (or angles) for which Mogul statistics could be retrieved, the number of bonds (or angles) that are observed in the model and the number of bonds (or angles) that are defined in the chemical component dictionary. The Link column lists molecule types, if any, to which the group is linked. The Z score for a bond length (or angle) is the number of standard deviations the observed value is removed from the expected value. A bond length (or angle) with $|Z| > 2$ is considered an outlier worth inspection. RMSZ is the root-mean-square of all Z scores of the bond lengths (or angles).

Mol	Type	Chain	Res	Link	Bond lengths			Bond angles		
					Counts	RMSZ	$\# Z > 2$	Counts	RMSZ	$\# Z > 2$
2	ACP	A	997	3	25,33,33	1.21	2 (8%)	31,52,52	2.07	7 (22%)
2	ACP	B	997	-	25,33,33	1.36	4 (16%)	31,52,52	1.92	6 (19%)

In the following table, the Chirals column lists the number of chiral outliers, the number of chiral centers analysed, the number of these observed in the model and the number defined in the chemical component dictionary. Similar counts are reported in the Torsion and Rings columns. '-' means no outliers of that kind were identified.

Mol	Type	Chain	Res	Link	Chirals	Torsions	Rings
2	ACP	A	997	3	-	0/15/38/38	0/3/3/3
2	ACP	B	997	-	-	0/15/38/38	0/3/3/3

All (6) bond length outliers are listed below:

Mol	Chain	Res	Type	Atoms	Z	Observed(Å)	Ideal(Å)
2	A	997	ACP	PB-O2B	-2.22	1.50	1.56
2	B	997	ACP	PB-O2B	-2.08	1.51	1.56
2	B	997	ACP	O4'-C1'	2.18	1.44	1.41
2	B	997	ACP	PB-O3A	3.22	1.62	1.58
2	A	997	ACP	C5-C4	3.31	1.48	1.40
2	B	997	ACP	C5-C4	3.45	1.48	1.40

All (13) bond angle outliers are listed below:

Mol	Chain	Res	Type	Atoms	Z	Observed(°)	Ideal(°)
2	A	997	ACP	N3-C2-N1	-7.37	123.25	128.89
2	B	997	ACP	N3-C2-N1	-7.19	123.39	128.89
2	B	997	ACP	C2'-C1'-N9	-4.35	107.65	114.29
2	A	997	ACP	PA-O3A-PB	-3.94	121.67	132.73
2	A	997	ACP	C2'-C1'-N9	-3.23	109.36	114.29
2	B	997	ACP	C4-C5-N7	-2.95	106.77	109.48
2	A	997	ACP	C4-C5-N7	-2.82	106.89	109.48
2	A	997	ACP	O3A-PA-O5'	-2.44	96.46	102.94
2	B	997	ACP	O1G-PG-C3B	-2.22	106.08	111.13
2	B	997	ACP	PA-O3A-PB	-2.15	126.70	132.73
2	B	997	ACP	O2B-PB-O1B	2.31	117.40	110.12
2	A	997	ACP	O3G-PG-O2G	3.04	117.04	108.13
2	A	997	ACP	O2B-PB-O1B	3.26	120.38	110.12

There are no chirality outliers.

There are no torsion outliers.

There are no ring outliers.

1 monomer is involved in 1 short contact:

Mol	Chain	Res	Type	Clashes	Symm-Clashes
2	B	997	ACP	1	0

5.7 Other polymers [i](#)

There are no such residues in this entry.

5.8 Polymer linkage issues [i](#)

There are no chain breaks in this entry.

6 Fit of model and data

6.1 Protein, DNA and RNA chains

In the following table, the column labelled ‘#RSRZ> 2’ contains the number (and percentage) of RSRZ outliers, followed by percent RSRZ outliers for the chain as percentile scores relative to all X-ray entries and entries of similar resolution. The OWAB column contains the minimum, median, 95th percentile and maximum values of the occupancy-weighted average B-factor per residue. The column labelled ‘Q< 0.9’ lists the number of (and percentage) of residues with an average occupancy less than 0.9.

Mol	Chain	Analysed	<RSRZ>	#RSRZ>2	OWAB(Å ²)	Q<0.9
1	A	268/287 (93%)	0.89	46 (17%) 2 3	31, 44, 55, 67	0
1	B	272/287 (94%)	1.48	87 (31%) 1 0	33, 49, 77, 86	0
All	All	540/574 (94%)	1.19	133 (24%) 1 1	31, 45, 75, 86	0

All (133) RSRZ outliers are listed below:

Mol	Chain	Res	Type	RSRZ
1	B	643	VAL	8.4
1	B	399	GLY	8.4
1	B	477	ILE	8.3
1	B	482	PRO	7.2
1	B	473	LEU	6.4
1	B	481	GLU	6.3
1	A	667	LYS	6.2
1	B	459	ARG	5.8
1	B	485	VAL	5.6
1	B	479	LEU	5.4
1	B	480	GLY	5.3
1	B	442	LEU	5.1
1	B	496	ASP	5.0
1	B	488	ILE	4.8
1	A	422	ILE	4.6
1	B	501	GLY	4.5
1	B	443	ASN	4.4
1	B	668	THR	4.2
1	B	484	LYS	4.2
1	B	658	VAL	4.2
1	B	642	ALA	4.2
1	B	486	GLU	4.2
1	B	478	GLU	4.1
1	B	458	ARG	4.1

Continued on next page...

Continued from previous page...

Mol	Chain	Res	Type	RSRZ
1	B	487	VAL	4.1
1	A	658	VAL	4.1
1	B	444	GLY	4.0
1	B	534	VAL	4.0
1	B	539	ARG	4.0
1	A	633	ILE	3.9
1	A	404	ILE	3.9
1	A	616	VAL	3.9
1	B	515	ASN	3.9
1	B	406	ILE	3.9
1	A	423	PHE	3.8
1	B	495	ALA	3.7
1	B	616	VAL	3.7
1	B	476	GLY	3.7
1	B	533	ILE	3.6
1	B	670	SER	3.6
1	B	532	VAL	3.6
1	B	472	ALA	3.5
1	B	461	GLU	3.5
1	B	423	PHE	3.5
1	A	421	VAL	3.4
1	A	532	VAL	3.3
1	B	447	ARG	3.3
1	B	537	ASN	3.3
1	A	639	SER	3.3
1	A	478	GLU	3.3
1	B	451	ARG	3.3
1	A	596	LEU	3.2
1	B	489	ALA	3.2
1	B	449	LEU	3.2
1	B	499	LEU	3.2
1	A	444	GLY	3.1
1	B	441	PRO	3.1
1	B	633	ILE	3.1
1	A	433	LYS	3.1
1	B	422	ILE	3.0
1	B	421	VAL	3.0
1	A	539	ARG	3.0
1	B	544	ILE	3.0
1	A	613	VAL	3.0
1	B	494	VAL	3.0
1	A	533	ILE	3.0

Continued on next page...

Continued from previous page...

Mol	Chain	Res	Type	RSRZ
1	A	571	ILE	3.0
1	A	614	ALA	2.9
1	B	509	PHE	2.9
1	B	650	LEU	2.9
1	A	500	VAL	2.9
1	B	483	GLU	2.9
1	B	516	GLU	2.9
1	B	592	ILE	2.8
1	B	445	ASP	2.8
1	A	598	HIS	2.7
1	B	500	VAL	2.7
1	A	563	ARG	2.7
1	B	427	GLY	2.7
1	A	431	LYS	2.7
1	B	404	ILE	2.7
1	B	519	LEU	2.6
1	A	650	LEU	2.6
1	B	405	LEU	2.6
1	B	474	GLU	2.6
1	B	475	HIS	2.6
1	A	428	THR	2.6
1	B	439	LEU	2.5
1	B	615	PHE	2.5
1	B	661	ALA	2.5
1	A	591	VAL	2.5
1	B	510	GLY	2.5
1	A	574	ASP	2.5
1	B	460	SER	2.5
1	B	669	MET	2.5
1	A	544	ILE	2.5
1	A	534	VAL	2.5
1	A	649	VAL	2.4
1	B	576	TRP	2.4
1	B	593	ALA	2.4
1	A	493	VAL	2.4
1	B	452	LEU	2.4
1	B	655	LEU	2.4
1	B	433	LYS	2.4
1	A	615	PHE	2.4
1	A	538	GLY	2.3
1	A	405	LEU	2.3
1	B	561	LEU	2.3

Continued on next page...

Continued from previous page...

Mol	Chain	Res	Type	RSRZ
1	A	568	VAL	2.3
1	A	406	ILE	2.3
1	A	400	ALA	2.3
1	A	429	LEU	2.3
1	A	515	ASN	2.2
1	B	507	GLU	2.2
1	B	649	VAL	2.2
1	A	640	ASP	2.2
1	A	483	GLU	2.2
1	B	508	ASP	2.2
1	A	648	ILE	2.2
1	B	400	ALA	2.1
1	B	543	ILE	2.1
1	B	570	MET	2.1
1	A	634	ALA	2.1
1	B	435	GLU	2.1
1	B	568	VAL	2.1
1	A	569	GLY	2.1
1	B	455	ILE	2.1
1	A	453	ALA	2.1
1	B	634	ALA	2.1
1	B	540	VAL	2.1
1	B	428	THR	2.1
1	A	631	LEU	2.0
1	B	538	GLY	2.0

6.2 Non-standard residues in protein, DNA, RNA chains ⓘ

There are no non-standard protein/DNA/RNA residues in this entry.

6.3 Carbohydrates ⓘ

There are no carbohydrates in this entry.

6.4 Ligands ⓘ

In the following table, the Atoms column lists the number of modelled atoms in the group and the number defined in the chemical component dictionary. LLDF column lists the quality of electron density of the group with respect to its neighbouring residues in protein, DNA or RNA chains. The B-factors column lists the minimum, median, 95th percentile and maximum values of B factors

of atoms in the group. The column labelled 'Q< 0.9' lists the number of atoms with occupancy less than 0.9.

Mol	Type	Chain	Res	Atoms	RSCC	RSR	LLDF	B-factors(\AA^2)	Q<0.9
2	ACP	B	997	31/31	0.89	0.20	0.17	67,70,78,78	0
2	ACP	A	997	31/31	0.92	0.12	-1.13	46,49,62,65	0
3	MG	A	998	1/1	0.53	0.30	-	79,79,79,79	0

6.5 Other polymers [i](#)

There are no such residues in this entry.