



# Full wwPDB X-ray Structure Validation Report ⓘ

Mar 17, 2016 – 03:31 PM EDT

PDB ID : 5A27  
Title : Leishmania major N-myristoyltransferase in complex with a chlorophenyl inhibitor (compound 10j).  
Authors : Rackham, M.D.; Yu, Z.; Brannigan, J.A.; Heal, W.P.; Paape, D.; Barker, K.V.; Wilkinson, A.J.; Smith, D.F.; Tate, E.W.; Leatherbarrow, R.J.  
Deposited on : 2015-05-15  
Resolution : 1.37 Å(reported)

This is a Full wwPDB X-ray Structure Validation Report for a publicly released PDB entry.  
We welcome your comments at [validation@mail.wwpdb.org](mailto:validation@mail.wwpdb.org)  
A user guide is available at  
<http://wwpdb.org/validation/2016/XrayValidationReportHelp>  
with specific help available everywhere you see the ⓘ symbol.

---

The following versions of software and data (see [references ⓘ](#)) were used in the production of this report:

MolProbity	:	4.02b-467
Mogul	:	unknown
Xtriage (Phenix)	:	1.9-1692
EDS	:	rb-20027107
Percentile statistics	:	20151230.v01 (using entries in the PDB archive December 30th 2015)
Refmac	:	5.8.0122
CCP4	:	6.5.0
Ideal geometry (proteins)	:	Engh & Huber (2001)
Ideal geometry (DNA, RNA)	:	Parkinson et al. (1996)
Validation Pipeline (wwPDB-VP)	:	rb-20027107

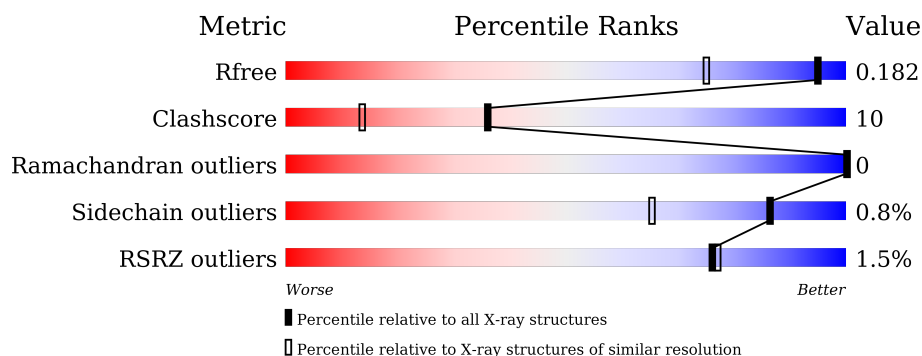
# 1 Overall quality at a glance

The following experimental techniques were used to determine the structure:

*X-RAY DIFFRACTION*

The reported resolution of this entry is 1.37 Å.

Percentile scores (ranging between 0-100) for global validation metrics of the entry are shown in the following graphic. The table shows the number of entries on which the scores are based.



Metric	Whole archive (#Entries)	Similar resolution (#Entries, resolution range(Å))
$R_{free}$	91344	1918 (1.40-1.36)
Clashscore	102246	2042 (1.40-1.36)
Ramachandran outliers	100387	1993 (1.40-1.36)
Sidechain outliers	100360	1992 (1.40-1.36)
RSRZ outliers	91569	1917 (1.40-1.36)

The table below summarises the geometric issues observed across the polymeric chains and their fit to the electron density. The red, orange, yellow and green segments on the lower bar indicate the fraction of residues that contain outliers for  $\geq 3$ , 2, 1 and 0 types of geometric quality criteria. A grey segment represents the fraction of residues that are not modelled. The numeric value for each fraction is indicated below the corresponding segment, with a dot representing fractions  $\leq 5\%$ . The upper red bar (where present) indicates the fraction of residues that have poor fit to the electron density. The numeric value is given above the bar.

Mol	Chain	Length	Quality of chain
1	A	411	

## 2 Entry composition [i](#)

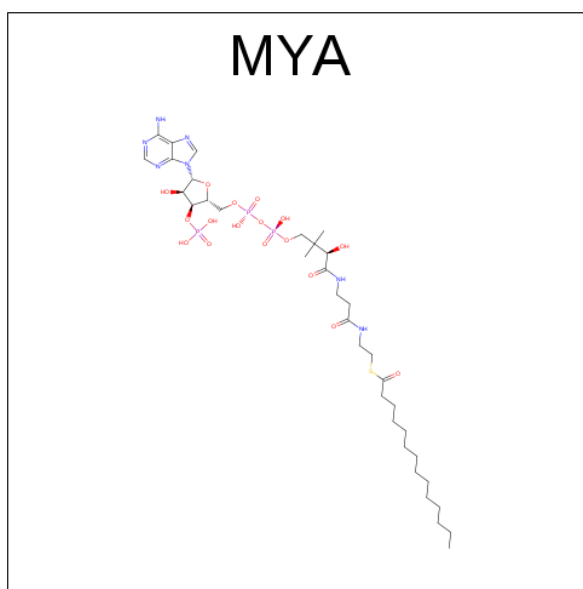
There are 5 unique types of molecules in this entry. The entry contains 4423 atoms, of which 0 are hydrogens and 0 are deuteriums.

In the tables below, the ZeroOcc column contains the number of atoms modelled with zero occupancy, the AltConf column contains the number of residues with at least one atom in alternate conformation and the Trace column contains the number of residues modelled with at most 2 atoms.

- Molecule 1 is a protein called GLYCYLPEPTIDE N-TETRADECANOYLTRANSFERASE.

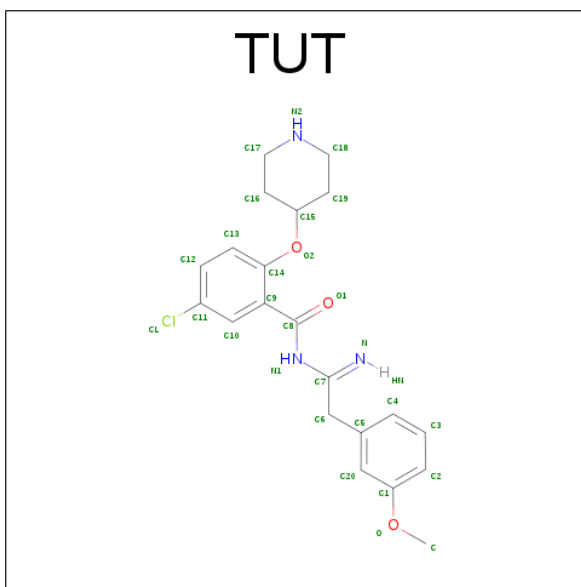
Mol	Chain	Residues	Atoms					ZeroOcc	AltConf	Trace
			Total	C	N	O	S			
1	A	411	3625	2375	600	632	18	0	49	0

- Molecule 2 is TETRADECANOYL-COA (three-letter code: MYA) (formula: C<sub>35</sub>H<sub>62</sub>N<sub>7</sub>O<sub>17</sub>P<sub>3</sub>S).



Mol	Chain	Residues	Atoms						ZeroOcc	AltConf
			Total	C	N	O	P	S		
2	A	1	63	35	7	17	3	1	0	0

- Molecule 3 is 5-CHLORANYL-N-[2-(3-METHOXYPHENYL)ETHANIMIDOYL]-2-PIPERIDIN-4-YLOXY-BENZAMIDE (three-letter code: TUT) (formula: C<sub>21</sub>H<sub>24</sub>ClN<sub>3</sub>O<sub>3</sub>).



Mol	Chain	Residues	Atoms				ZeroOcc	AltConf
3	A	1	Total	C	Cl	N	O	0
			28	21	1	3	3	

- Molecule 4 is MAGNESIUM ION (three-letter code: MG) (formula: Mg).

Mol	Chain	Residues	Atoms		ZeroOcc	AltConf
4	A	1	Total	Mg	0	0
			1	1		

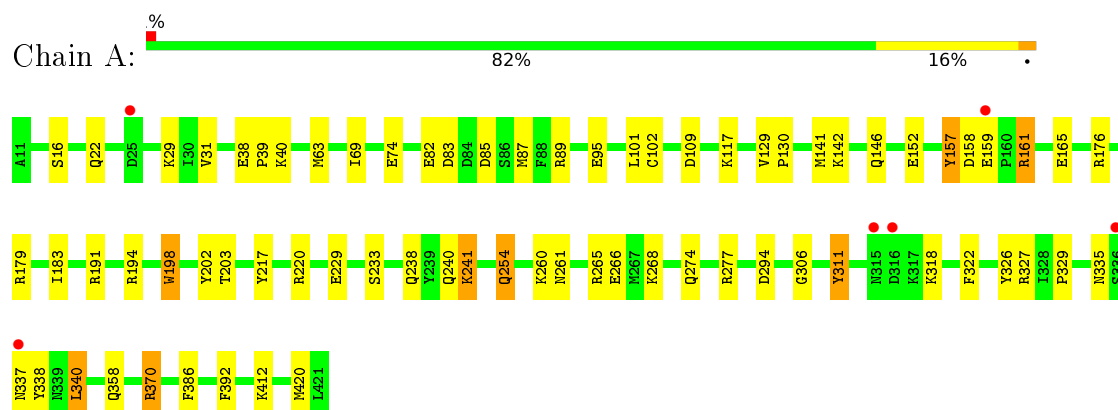
- Molecule 5 is water.

Mol	Chain	Residues	Atoms		ZeroOcc	AltConf
5	A	706	Total	O	0	0
			706	706		

### 3 Residue-property plots

These plots are drawn for all protein, RNA and DNA chains in the entry. The first graphic for a chain summarises the proportions of errors displayed in the second graphic. The second graphic shows the sequence view annotated by issues in geometry and electron density. Residues are color-coded according to the number of geometric quality criteria for which they contain at least one outlier: green = 0, yellow = 1, orange = 2 and red = 3 or more. A red dot above a residue indicates a poor fit to the electron density ( $RSRZ > 2$ ). Stretches of 2 or more consecutive residues without any outlier are shown as a green connector. Residues present in the sample, but not in the model, are shown in grey.

• Molecule 1: GLYCYLPEPTIDE N-TETRADECANOYLTRANSFERASE



## 4 Data and refinement statistics

Property	Value	Source
Space group	P 1 21 1	Depositor
Cell constants a, b, c, $\alpha$ , $\beta$ , $\gamma$	46.94Å 90.59Å 52.71Å 90.00° 111.55° 90.00°	Depositor
Resolution (Å)	21.83 – 1.37 21.83 – 1.37	Depositor EDS
% Data completeness (in resolution range)	94.8 (21.83-1.37) 94.8 (21.83-1.37)	Depositor EDS
$R_{merge}$	0.05	Depositor
$R_{sym}$	(Not available)	Depositor
$\langle I/\sigma(I) \rangle$ <sup>1</sup>	2.30 (at 1.37Å)	Xtriage
Refinement program	REFMAC 5.8.0107	Depositor
R, $R_{free}$	0.147 , 0.182 0.146 , 0.182	Depositor DCC
$R_{free}$ test set	4078 reflections (5.28%)	DCC
Wilson B-factor (Å <sup>2</sup> )	9.7	Xtriage
Anisotropy	0.311	Xtriage
Bulk solvent $k_{sol}$ (e/Å <sup>3</sup> ), $B_{sol}$ (Å <sup>2</sup> )	0.34 , 36.3	EDS
Estimated twinning fraction	No twinning to report.	Xtriage
L-test for twinning <sup>2</sup>	$\langle  L  \rangle = 0.48$ , $\langle L^2 \rangle = 0.31$	Xtriage
Outliers	0 of 81359 reflections	Xtriage
$F_o, F_c$ correlation	0.97	EDS
Total number of atoms	4423	wwPDB-VP
Average B, all atoms (Å <sup>2</sup> )	14.0	wwPDB-VP

Xtriage's analysis on translational NCS is as follows: *The largest off-origin peak in the Patterson function is 7.62% of the height of the origin peak. No significant pseudotranslation is detected.*

<sup>1</sup>Intensities estimated from amplitudes.

<sup>2</sup>Theoretical values of  $\langle |L| \rangle$ ,  $\langle L^2 \rangle$  for acentric reflections are 0.5, 0.375 respectively for untwinned datasets, and 0.333, 0.2 for perfectly twinned datasets.

## 5 Model quality [i](#)

### 5.1 Standard geometry [i](#)

Bond lengths and bond angles in the following residue types are not validated in this section: MYA, MG, TUT

The Z score for a bond length (or angle) is the number of standard deviations the observed value is removed from the expected value. A bond length (or angle) with  $|Z| > 5$  is considered an outlier worth inspection. RMSZ is the root-mean-square of all Z scores of the bond lengths (or angles).

Mol	Chain	Bond lengths		Bond angles	
		RMSZ	$\# Z  > 5$	RMSZ	$\# Z  > 5$
1	A	1.31	13/3875 (0.3%)	1.31	32/5254 (0.6%)

All (13) bond length outliers are listed below:

Mol	Chain	Res	Type	Atoms	Z	Observed(Å)	Ideal(Å)
1	A	266	GLU	CD-OE2	-8.91	1.15	1.25
1	A	311	TYR	CE1-CZ	-7.87	1.28	1.38
1	A	229	GLU	CD-OE2	5.97	1.32	1.25
1	A	82	GLU	CD-OE2	-5.68	1.19	1.25
1	A	306	GLY	N-CA	-5.46	1.37	1.46
1	A	202	TYR	CG-CD2	5.42	1.46	1.39
1	A	157[A]	TYR	CB-CG	-5.41	1.43	1.51
1	A	157[B]	TYR	CB-CG	-5.41	1.43	1.51
1	A	74	GLU	CG-CD	5.25	1.59	1.51
1	A	233	SER	CA-CB	5.21	1.60	1.52
1	A	74	GLU	CD-OE2	-5.19	1.20	1.25
1	A	198	TRP	CE3-CZ3	5.19	1.47	1.38
1	A	311	TYR	CD2-CE2	5.11	1.47	1.39

All (32) bond angle outliers are listed below:

Mol	Chain	Res	Type	Atoms	Z	Observed(°)	Ideal(°)
1	A	194	ARG	NE-CZ-NH2	-11.65	114.47	120.30
1	A	327	ARG	NE-CZ-NH2	-9.03	115.78	120.30
1	A	83	ASP	CB-CG-OD2	8.68	126.12	118.30
1	A	179	ARG	NE-CZ-NH1	7.64	124.12	120.30
1	A	87[A]	MET	CG-SD-CE	-7.36	88.42	100.20
1	A	87[B]	MET	CG-SD-CE	-7.36	88.42	100.20
1	A	370[A]	ARG	NE-CZ-NH1	7.34	123.97	120.30
1	A	370[B]	ARG	NE-CZ-NH1	7.34	123.97	120.30

*Continued on next page...*

*Continued from previous page...*

Mol	Chain	Res	Type	Atoms	Z	Observed(°)	Ideal(°)
1	A	217	TYR	CB-CG-CD2	-7.32	116.61	121.00
1	A	176	ARG	NE-CZ-NH1	7.21	123.90	120.30
1	A	294	ASP	CB-CG-OD2	-6.79	112.19	118.30
1	A	370[A]	ARG	NE-CZ-NH2	-6.64	116.98	120.30
1	A	370[B]	ARG	NE-CZ-NH2	-6.64	116.98	120.30
1	A	89	ARG	NE-CZ-NH1	6.53	123.56	120.30
1	A	277	ARG	NE-CZ-NH1	6.27	123.44	120.30
1	A	265	ARG	NE-CZ-NH2	-6.18	117.21	120.30
1	A	152	GLU	OE1-CD-OE2	-5.94	116.17	123.30
1	A	194	ARG	NE-CZ-NH1	5.70	123.15	120.30
1	A	95	GLU	CG-CD-OE1	5.55	129.40	118.30
1	A	179	ARG	NE-CZ-NH2	-5.52	117.54	120.30
1	A	158	ASP	CB-CG-OD2	-5.49	113.36	118.30
1	A	85	ASP	CB-CG-OD1	-5.46	113.39	118.30
1	A	161[A]	ARG	NE-CZ-NH1	-5.45	117.58	120.30
1	A	161[B]	ARG	NE-CZ-NH1	-5.45	117.58	120.30
1	A	327	ARG	NE-CZ-NH1	5.33	122.97	120.30
1	A	220	ARG	NE-CZ-NH1	5.28	122.94	120.30
1	A	217	TYR	CZ-CE2-CD2	-5.26	115.06	119.80
1	A	322	PHE	CB-CG-CD2	-5.26	117.12	120.80
1	A	277	ARG	CD-NE-CZ	5.22	130.91	123.60
1	A	392	PHE	CB-CG-CD2	-5.22	117.15	120.80
1	A	386	PHE	CB-CG-CD2	-5.12	117.21	120.80
1	A	326	TYR	CG-CD2-CE2	-5.03	117.28	121.30

There are no chirality outliers.

There are no planarity outliers.

## 5.2 Too-close contacts ⓘ

In the following table, the Non-H and H(model) columns list the number of non-hydrogen atoms and hydrogen atoms in the chain respectively. The H(added) column lists the number of hydrogen atoms added and optimized by MolProbity. The Clashes column lists the number of clashes within the asymmetric unit, whereas Symm-Clashes lists symmetry related clashes.

Mol	Chain	Non-H	H(model)	H(added)	Clashes	Symm-Clashes
1	A	3625	0	3748	72	1
2	A	63	0	58	0	0
3	A	28	0	0	0	0
4	A	1	0	0	0	0
5	A	706	0	0	31	1

*Continued on next page...*



*Continued from previous page...*

Mol	Chain	Non-H	H(model)	H(added)	Clashes	Symm-Clashes
All	All	4423	0	3806	72	1

The all-atom clashscore is defined as the number of clashes found per 1000 atoms (including hydrogen atoms). The all-atom clashscore for this structure is 10.

All (72) close contacts within the same asymmetric unit are listed below, sorted by their clash magnitude.

Atom-1	Atom-2	Interatomic distance (Å)	Clash overlap (Å)
1:A:40[B]:LYS:HD3	5:A:2127:HOH:O	1.13	1.29
1:A:38[B]:GLU:OE2	5:A:2120:HOH:O	1.65	1.12
1:A:146[B]:GLN:NE2	5:A:2390:HOH:O	1.81	1.05
1:A:240[A]:GLN:OE1	5:A:2522:HOH:O	1.78	1.02
1:A:40[B]:LYS:CE	5:A:2127:HOH:O	2.00	0.93
1:A:117[A]:LYS:NZ	5:A:2183:HOH:O	2.04	0.90
1:A:159[A]:GLU:OE2	5:A:2420:HOH:O	1.90	0.88
1:A:412[A]:LYS:NZ	5:A:2699:HOH:O	2.06	0.88
1:A:146[B]:GLN:NE2	5:A:2381:HOH:O	2.11	0.83
1:A:40[B]:LYS:CD	5:A:2127:HOH:O	1.78	0.81
1:A:40[B]:LYS:HE2	5:A:2127:HOH:O	1.74	0.79
1:A:335:ASN:HD22	1:A:338:TYR:H	1.28	0.78
1:A:159[A]:GLU:CD	5:A:2420:HOH:O	2.23	0.77
1:A:146[A]:GLN:HG2	5:A:2381:HOH:O	1.83	0.77
1:A:63[B]:MET:HB3	1:A:102:CYS:SG	2.27	0.74
1:A:370[B]:ARG:HH11	1:A:370[B]:ARG:HG2	1.54	0.72
1:A:412[A]:LYS:CE	5:A:2699:HOH:O	2.37	0.71
1:A:274[B]:GLN:HE22	1:A:318[B]:LYS:CG	2.04	0.70
1:A:40[B]:LYS:CD	5:A:2056:HOH:O	2.40	0.70
1:A:16:SER:HA	1:A:22:GLN:HE22	1.61	0.65
1:A:40[B]:LYS:HD3	5:A:2056:HOH:O	1.97	0.64
1:A:274[B]:GLN:HE22	1:A:318[B]:LYS:HG2	1.62	0.64
1:A:370[B]:ARG:NH1	1:A:370[B]:ARG:HG2	2.14	0.61
1:A:40[B]:LYS:HD2	5:A:2056:HOH:O	2.01	0.61
1:A:274[B]:GLN:NE2	1:A:318[B]:LYS:HG2	2.17	0.60
1:A:274[B]:GLN:NE2	1:A:318[B]:LYS:CG	2.64	0.59
1:A:412[A]:LYS:HE3	5:A:2699:HOH:O	2.01	0.58
1:A:203:THR:OG1	1:A:420[A]:MET:HG2	2.04	0.57
1:A:63[B]:MET:HG3	1:A:69[B]:ILE:CD1	2.34	0.57
1:A:335:ASN:ND2	1:A:338:TYR:H	2.02	0.57
1:A:146[B]:GLN:HG3	5:A:2381:HOH:O	2.05	0.57
1:A:63[B]:MET:HG3	1:A:69[B]:ILE:HD11	1.87	0.56
1:A:183[A]:ILE:HD11	5:A:2067:HOH:O	2.06	0.55

*Continued on next page...*

Continued from previous page...

Atom-1	Atom-2	Interatomic distance (Å)	Clash overlap (Å)
1:A:254[A]:GLN:NE2	5:A:2540:HOH:O	2.38	0.55
1:A:335:ASN:ND2	1:A:337:ASN:H	2.05	0.55
1:A:370[B]:ARG:NH1	1:A:370[B]:ARG:CG	2.68	0.55
1:A:109[B]:ASP:OD1	5:A:2193:HOH:O	2.19	0.52
1:A:142:LYS:HD2	5:A:2374:HOH:O	2.09	0.51
1:A:274[B]:GLN:HE22	1:A:318[B]:LYS:HG3	1.74	0.51
1:A:146[B]:GLN:NE2	5:A:2383:HOH:O	2.41	0.51
1:A:238:GLN:OE1	5:A:2520:HOH:O	2.19	0.50
1:A:274[B]:GLN:NE2	1:A:318[B]:LYS:HG3	2.25	0.50
1:A:238:GLN:HE21	1:A:241:LYS:NZ	2.11	0.49
1:A:261:ASN:ND2	1:A:358:GLN:HE21	2.11	0.49
1:A:31:VAL:HB	1:A:141:MET:CE	2.42	0.49
1:A:38[B]:GLU:CD	5:A:2120:HOH:O	2.33	0.48
1:A:165[B]:GLU:OE2	1:A:420[B]:MET:SD	2.72	0.48
1:A:238:GLN:NE2	1:A:241:LYS:HZ1	2.12	0.47
1:A:63[B]:MET:HG2	1:A:101[B]:LEU:CB	2.44	0.47
1:A:31:VAL:HB	1:A:141:MET:HE1	1.96	0.46
1:A:268[B]:LYS:NZ	5:A:2561:HOH:O	2.48	0.46
1:A:238:GLN:NE2	1:A:241:LYS:NZ	2.63	0.46
1:A:16:SER:HA	1:A:22:GLN:NE2	2.30	0.46
1:A:157[A]:TYR:CD1	1:A:161[A]:ARG:NH1	2.84	0.46
1:A:183[A]:ILE:HG23	1:A:183[A]:ILE:HD12	1.74	0.44
1:A:340[A]:LEU:HD21	5:A:2278:HOH:O	2.18	0.43
1:A:370[B]:ARG:HH11	1:A:370[B]:ARG:CG	2.22	0.43
1:A:129:VAL:HB	1:A:130[A]:PRO:HD2	2.00	0.43
1:A:311:TYR:OH	1:A:370[A]:ARG:NH2	2.45	0.42
1:A:31:VAL:CB	1:A:141:MET:HE1	2.50	0.42
1:A:63[B]:MET:HG2	1:A:101[B]:LEU:CD1	2.50	0.42
1:A:39:PRO:HB3	1:A:198:TRP:CD2	2.54	0.42
1:A:146[B]:GLN:CD	5:A:2383:HOH:O	2.59	0.41
1:A:261:ASN:HD21	1:A:358:GLN:HE21	1.68	0.41
1:A:159[B]:GLU:HB3	5:A:2414:HOH:O	2.19	0.41
1:A:329:PRO:HB2	1:A:340[A]:LEU:HG	2.03	0.41
1:A:260[B]:LYS:NZ	5:A:2551:HOH:O	2.54	0.40
1:A:157[A]:TYR:CE1	1:A:161[A]:ARG:NH1	2.89	0.40

All (1) symmetry-related close contacts are listed below. The label for Atom-2 includes the symmetry operator and encoded unit-cell translations to be applied.

Atom-1	Atom-2	Interatomic distance (Å)	Clash overlap (Å)
1:A:29[A]:LYS:NZ	5:A:2287:HOH:O[1_554]	2.17	0.03

## 5.3 Torsion angles

### 5.3.1 Protein backbone

In the following table, the Percentiles column shows the percent Ramachandran outliers of the chain as a percentile score with respect to all X-ray entries followed by that with respect to entries of similar resolution.

The Analysed column shows the number of residues for which the backbone conformation was analysed, and the total number of residues.

Mol	Chain	Analysed	Favoured	Allowed	Outliers	Percentiles	
1	A	458/411 (111%)	444 (97%)	14 (3%)	0	100	100

There are no Ramachandran outliers to report.

### 5.3.2 Protein sidechains

In the following table, the Percentiles column shows the percent sidechain outliers of the chain as a percentile score with respect to all X-ray entries followed by that with respect to entries of similar resolution.

The Analysed column shows the number of residues for which the sidechain conformation was analysed, and the total number of residues.

Mol	Chain	Analysed	Rotameric	Outliers	Percentiles	
1	A	411/362 (114%)	406 (99%)	5 (1%)	78	51

All (5) residues with a non-rotameric sidechain are listed below:

Mol	Chain	Res	Type
1	A	241	LYS
1	A	254[A]	GLN
1	A	254[B]	GLN
1	A	340[A]	LEU
1	A	340[B]	LEU

Some sidechains can be flipped to improve hydrogen bonding and reduce clashes. All (6) such sidechains are listed below:

Mol	Chain	Res	Type
1	A	22	GLN
1	A	91	ASN
1	A	238	GLN

*Continued on next page...*

*Continued from previous page...*

Mol	Chain	Res	Type
1	A	261	ASN
1	A	335	ASN
1	A	337	ASN

### 5.3.3 RNA [i](#)

There are no RNA molecules in this entry.

## 5.4 Non-standard residues in protein, DNA, RNA chains [i](#)

There are no non-standard protein/DNA/RNA residues in this entry.

## 5.5 Carbohydrates [i](#)

There are no carbohydrates in this entry.

## 5.6 Ligand geometry [i](#)

Of 3 ligands modelled in this entry, 1 is monoatomic - leaving 2 for Mogul analysis.

In the following table, the Counts columns list the number of bonds (or angles) for which Mogul statistics could be retrieved, the number of bonds (or angles) that are observed in the model and the number of bonds (or angles) that are defined in the chemical component dictionary. The Link column lists molecule types, if any, to which the group is linked. The Z score for a bond length (or angle) is the number of standard deviations the observed value is removed from the expected value. A bond length (or angle) with  $|Z| > 2$  is considered an outlier worth inspection. RMSZ is the root-mean-square of all Z scores of the bond lengths (or angles).

Mol	Type	Chain	Res	Link	Bond lengths			Bond angles		
					Counts	RMSZ	$\# Z  > 2$	Counts	RMSZ	$\# Z  > 2$
2	MYA	A	1001	4	53,65,65	1.01	2 (3%)	64,91,91	1.55	8 (12%)
3	TUT	A	1002	-	29,30,30	1.52	3 (10%)	36,40,40	1.71	11 (30%)

In the following table, the Chirals column lists the number of chiral outliers, the number of chiral centers analysed, the number of these observed in the model and the number defined in the chemical component dictionary. Similar counts are reported in the Torsion and Rings columns. '-' means no outliers of that kind were identified.

Mol	Type	Chain	Res	Link	Chirals	Torsions	Rings
2	MYA	A	1001	4	-	0/59/80/80	0/3/3/3

*Continued on next page...*

*Continued from previous page...*

Mol	Type	Chain	Res	Link	Chirals	Torsions	Rings
3	TUT	A	1002	-	-	0/16/26/26	0/3/3/3

All (5) bond length outliers are listed below:

Mol	Chain	Res	Type	Atoms	Z	Observed(Å)	Ideal(Å)
3	A	1002	TUT	C8-N1	-5.42	1.28	1.37
2	A	1001	MYA	C2X-C1X	-2.23	1.50	1.53
3	A	1002	TUT	C17-N2	2.11	1.55	1.46
2	A	1001	MYA	C2-S1	2.33	1.84	1.81
3	A	1002	TUT	C11-CL	2.56	1.80	1.74

All (19) bond angle outliers are listed below:

Mol	Chain	Res	Type	Atoms	Z	Observed(°)	Ideal(°)
2	A	1001	MYA	N3A-C2A-N1A	-5.55	124.51	128.87
2	A	1001	MYA	C4X-O4X-C1X	-3.52	105.91	109.64
2	A	1001	MYA	C1X-N9A-C4A	-2.97	123.49	126.81
3	A	1002	TUT	C12-C11-CL	-2.89	114.46	119.35
3	A	1002	TUT	C19-C18-N2	-2.79	105.82	110.62
3	A	1002	TUT	C12-C13-C14	-2.67	114.94	120.05
3	A	1002	TUT	O2-C15-C16	-2.40	102.36	108.31
2	A	1001	MYA	C6-C5-N4	-2.29	112.48	116.46
2	A	1001	MYA	C13-C11-C12	-2.22	105.62	108.50
2	A	1001	MYA	C4M-C3M-C2M	-2.20	107.63	113.97
3	A	1002	TUT	C3-C2-C1	-2.19	115.14	118.93
3	A	1002	TUT	O1-C8-C9	-2.00	117.01	120.94
3	A	1002	TUT	C18-C19-C15	2.56	113.02	110.28
2	A	1001	MYA	O7A-P3X-O8A	2.70	117.35	107.44
3	A	1002	TUT	C12-C11-C10	2.71	125.24	121.53
3	A	1002	TUT	C13-C14-C9	2.74	124.76	119.78
3	A	1002	TUT	C9-C8-N1	3.12	120.96	115.37
3	A	1002	TUT	C17-C16-C15	3.88	114.42	110.28
2	A	1001	MYA	O2M-C2M-C3M	5.72	119.62	109.26

There are no chirality outliers.

There are no torsion outliers.

There are no ring outliers.

No monomer is involved in short contacts.

## 5.7 Other polymers

There are no such residues in this entry.

## 5.8 Polymer linkage issues

There are no chain breaks in this entry.

## 6 Fit of model and data [i](#)

### 6.1 Protein, DNA and RNA chains [i](#)

In the following table, the column labelled ‘#RSRZ> 2’ contains the number (and percentage) of RSRZ outliers, followed by percent RSRZ outliers for the chain as percentile scores relative to all X-ray entries and entries of similar resolution. The OWAB column contains the minimum, median, 95<sup>th</sup> percentile and maximum values of the occupancy-weighted average B-factor per residue. The column labelled ‘Q< 0.9’ lists the number of (and percentage) of residues with an average occupancy less than 0.9.

Mol	Chain	Analysed	<RSRZ>	#RSRZ>2	OWAB(Å <sup>2</sup> )	Q<0.9
1	A	411/411 (100%)	-0.22	6 (1%) 76 77	6, 10, 23, 44	3 (0%)

All (6) RSRZ outliers are listed below:

Mol	Chain	Res	Type	RSRZ
1	A	315	ASN	4.5
1	A	336	SER	2.5
1	A	337	ASN	2.2
1	A	25[A]	ASP	2.1
1	A	316	ASP	2.1
1	A	159[A]	GLU	2.1

### 6.2 Non-standard residues in protein, DNA, RNA chains [i](#)

There are no non-standard protein/DNA/RNA residues in this entry.

### 6.3 Carbohydrates [i](#)

There are no carbohydrates in this entry.

### 6.4 Ligands [i](#)

In the following table, the Atoms column lists the number of modelled atoms in the group and the number defined in the chemical component dictionary. LLDF column lists the quality of electron density of the group with respect to its neighbouring residues in protein, DNA or RNA chains. The B-factors column lists the minimum, median, 95<sup>th</sup> percentile and maximum values of B factors of atoms in the group. The column labelled ‘Q< 0.9’ lists the number of atoms with occupancy less than 0.9.

Mol	Type	Chain	Res	Atoms	RSCC	RSR	LLDF	B-factors( $\text{\AA}^2$ )	Q<0.9
3	TUT	A	1002	28/28	0.97	0.09	1.40	10,15,23,32	0
2	MYA	A	1001	63/63	0.98	0.06	-0.53	6,8,10,12	0
4	MG	A	1003	1/1	1.00	0.03	-1.96	17,17,17,17	0

## 6.5 Other polymers [i](#)

There are no such residues in this entry.