



# wwPDB X-ray Structure Validation Summary Report ⓘ

Feb 1, 2016 – 02:41 PM GMT

PDB ID : 4A3C  
Title : RNA POLYMERASE II INITIAL TRANSCRIBING COMPLEX WITH A  
5NT DNA-RNA HYBRID  
Authors : Cheung, A.C.M.; Sainsbury, S.; Cramer, P.  
Deposited on : 2011-09-30  
Resolution : 3.50 Å(reported)

This is a wwPDB X-ray Structure Validation Summary Report for a publicly released PDB entry.  
We welcome your comments at [validation@mail.wwpdb.org](mailto:validation@mail.wwpdb.org)  
A user guide is available at  
<http://wwpdb.org/validation/2016/XrayValidationReportHelp>  
with specific help available everywhere you see the ⓘ symbol.

---

The following versions of software and data (see [references ⓘ](#)) were used in the production of this report:

MolProbity : 4.02b-467  
Mogul : 1.7 (RC4), CSD as536be (2015)  
Xtriage (Phenix) : 1.9-1692  
EDS : rb-20026688  
Percentile statistics : 20151230.v01 (using entries in the PDB archive December 30th 2015)  
Refmac : 5.8.0135  
CCP4 : 6.5.0  
Ideal geometry (proteins) : Engh & Huber (2001)  
Ideal geometry (DNA, RNA) : Parkinson et al. (1996)  
Validation Pipeline (wwPDB-VP) : trunk26865

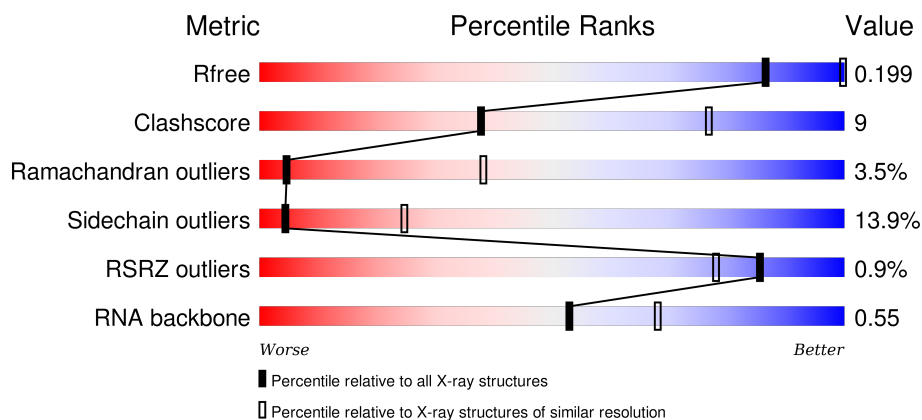
# 1 Overall quality at a glance

The following experimental techniques were used to determine the structure:

## *X-RAY DIFFRACTION*

The reported resolution of this entry is 3.50 Å.

Percentile scores (ranging between 0-100) for global validation metrics of the entry are shown in the following graphic. The table shows the number of entries on which the scores are based.



Metric	Whole archive (#Entries)	Similar resolution (#Entries, resolution range(Å))
$R_{free}$	91344	1051 (3.60-3.40)
Clashscore	102246	1157 (3.60-3.40)
Ramachandran outliers	100387	1120 (3.60-3.40)
Sidechain outliers	100360	1121 (3.60-3.40)
RSRZ outliers	91569	1058 (3.60-3.40)
RNA backbone	2183	1050 (4.20-2.80)

The table below summarises the geometric issues observed across the polymeric chains and their fit to the electron density. The red, orange, yellow and green segments on the lower bar indicate the fraction of residues that contain outliers for  $\geq 3$ , 2, 1 and 0 types of geometric quality criteria. A grey segment represents the fraction of residues that are not modelled. The numeric value for each fraction is indicated below the corresponding segment, with a dot representing fractions  $\leq 5\%$ . The upper red bar (where present) indicates the fraction of residues that have poor fit to the electron density. The numeric value is given above the bar.

Mol	Chain	Length	Quality of chain
1	A	1732	
2	B	1224	
3	C	318	
4	D	221	

*Continued on next page...*

*Continued from previous page...*

Mol	Chain	Length	Quality of chain
5	E	215	
6	F	155	
7	G	171	
8	H	146	
9	I	122	
10	J	70	
11	K	120	
12	L	70	
13	N	14	
14	P	5	
15	T	26	

## 2 Entry composition

There are 17 unique types of molecules in this entry. The entry contains 31858 atoms, of which 0 are hydrogens and 0 are deuteriums.

In the tables below, the ZeroOcc column contains the number of atoms modelled with zero occupancy, the AltConf column contains the number of residues with at least one atom in alternate conformation and the Trace column contains the number of residues modelled with at most 2 atoms.

- Molecule 1 is a protein called DNA-DIRECTED RNA POLYMERASE II SUBUNIT RPB1.

Mol	Chain	Residues	Atoms					ZeroOcc	AltConf	Trace
1	A	1422	Total	C	N	O	S	0	0	0
			11174	7037	1954	2121	62			

- Molecule 2 is a protein called DNA-DIRECTED RNA POLYMERASE II SUBUNIT RPB2.

Mol	Chain	Residues	Atoms					ZeroOcc	AltConf	Trace
2	B	1115	Total	C	N	O	S	0	0	0
			8859	5609	1554	1641	55			

- Molecule 3 is a protein called DNA-DIRECTED RNA POLYMERASE II SUBUNIT RPB3.

Mol	Chain	Residues	Atoms					ZeroOcc	AltConf	Trace
3	C	266	Total	C	N	O	S	0	0	0
			2095	1317	348	417	13			

- Molecule 4 is a protein called DNA-DIRECTED RNA POLYMERASE II SUBUNIT RPB4.

Mol	Chain	Residues	Atoms					ZeroOcc	AltConf	Trace
4	D	178	Total	C	N	O	S	0	0	0
			1434	887	257	288	2			

- Molecule 5 is a protein called DNA-DIRECTED RNA POLYMERASES I, II, AND III SUB-UNIT RPABC 1.

Mol	Chain	Residues	Atoms					ZeroOcc	AltConf	Trace
5	E	214	Total	C	N	O	S	0	0	0
			1752	1111	309	321	11			

- Molecule 6 is a protein called DNA-DIRECTED RNA POLYMERASES I, II, AND III SUB-UNIT RPABC 2.

Mol	Chain	Residues	Atoms					ZeroOcc	AltConf	Trace
6	F	84	Total	C	N	O	S	0	0	0
			679	434	115	127	3			

- Molecule 7 is a protein called RPB7, DNA-DIRECTED RNA POLYMERASE II SUBUNIT RPB7.

Mol	Chain	Residues	Atoms					ZeroOcc	AltConf	Trace
7	G	171	Total	C	N	O	S	0	0	0
			1340	861	222	249	8			

- Molecule 8 is a protein called DNA-DIRECTED RNA POLYMERASES I, II, AND III SUBUNIT RPABC 3.

Mol	Chain	Residues	Atoms					ZeroOcc	AltConf	Trace
8	H	133	Total	C	N	O	S	0	0	0
			1068	673	180	211	4			

- Molecule 9 is a protein called DNA-DIRECTED RNA POLYMERASE II SUBUNIT RPB9.

Mol	Chain	Residues	Atoms					ZeroOcc	AltConf	Trace
9	I	119	Total	C	N	O	S	0	0	0
			971	596	179	186	10			

- Molecule 10 is a protein called DNA-DIRECTED RNA POLYMERASES I, II, AND III SUBUNIT RPABC 5.

Mol	Chain	Residues	Atoms					ZeroOcc	AltConf	Trace
10	J	65	Total	C	N	O	S	0	0	0
			532	339	93	94	6			

- Molecule 11 is a protein called DNA-DIRECTED RNA POLYMERASE II SUBUNIT RPB11.

Mol	Chain	Residues	Atoms					ZeroOcc	AltConf	Trace
11	K	115	Total	C	N	O	S	0	0	1
			920	590	157	171	2			

- Molecule 12 is a protein called DNA-DIRECTED RNA POLYMERASES I, II, AND III SUBUNIT RPABC 4.

Mol	Chain	Residues	Atoms					ZeroOcc	AltConf	Trace
12	L	46	Total	C	N	O	S	0	0	0
			363	224	72	63	4			

- Molecule 13 is a DNA chain called NON TEMPLATE DNA.

Mol	Chain	Residues	Atoms					ZeroOcc	AltConf	Trace
13	N	10	Total	C	N	O	P	0	0	0
			207	99	39	59	10			

- Molecule 14 is a RNA chain called TRANSCRIPT RNA, 5'-R(\*CP\*AP\*GP\*GP\*AP)-3'.

Mol	Chain	Residues	Atoms					ZeroOcc	AltConf	Trace
14	P	4	Total	C	N	O	P	0	0	0
			90	40	20	26	4			

- Molecule 15 is a DNA chain called TEMPLATE DNA.

Mol	Chain	Residues	Atoms						ZeroOcc	AltConf	Trace
15	T	18	Total	Br	C	N	O	P	0	0	0
			365	1	175	58	113	18			

- Molecule 16 is ZINC ION (three-letter code: ZN) (formula: Zn).

Mol	Chain	Residues	Atoms		ZeroOcc	AltConf
16	J	1	Total	Zn	0	0
			1	1		
16	B	1	Total	Zn	0	0
			1	1		
16	I	2	Total	Zn	0	0
			2	2		
16	C	1	Total	Zn	0	0
			1	1		
16	A	2	Total	Zn	0	0
			2	2		
16	L	1	Total	Zn	0	0
			1	1		

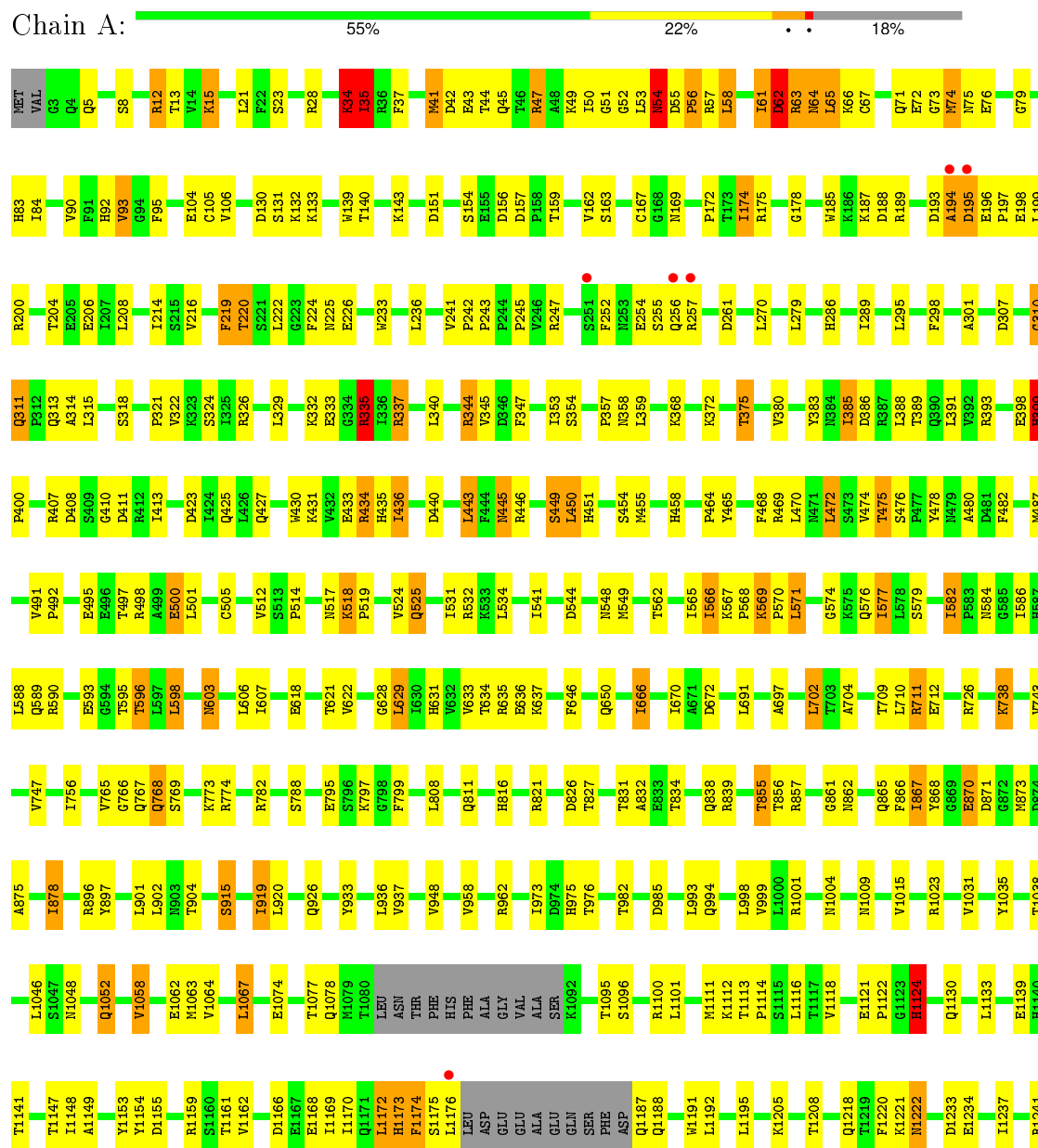
- Molecule 17 is MAGNESIUM ION (three-letter code: MG) (formula: Mg).

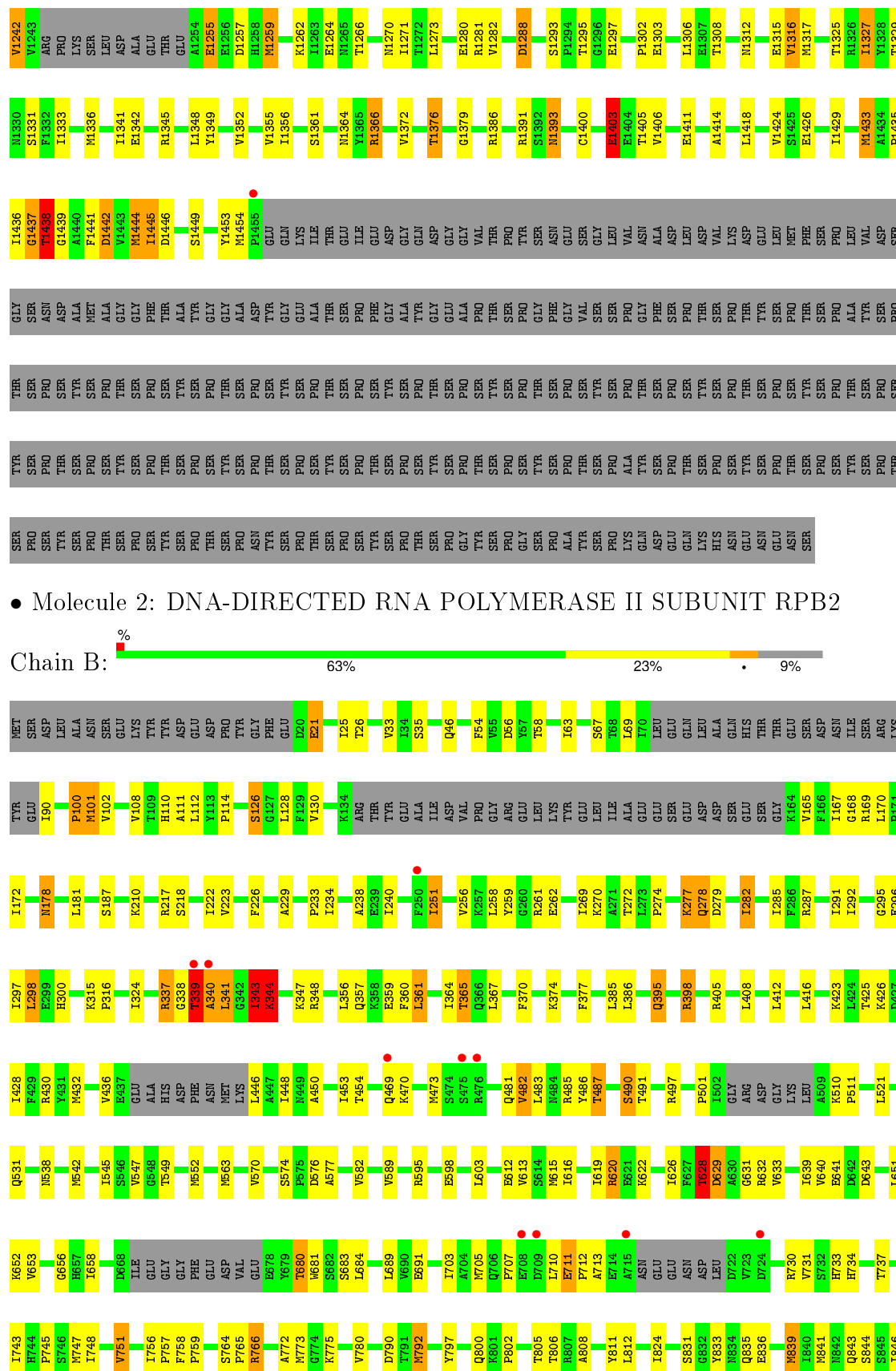
Mol	Chain	Residues	Atoms		ZeroOcc	AltConf
17	A	1	Total	Mg	0	0
			1	1		

### 3 Residue-property plots

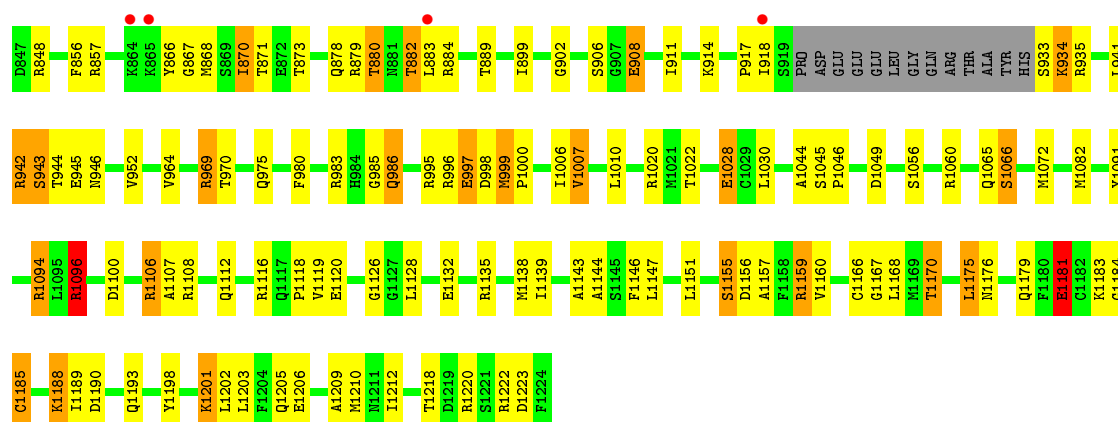
These plots are drawn for all protein, RNA and DNA chains in the entry. The first graphic for a chain summarises the proportions of errors displayed in the second graphic. The second graphic shows the sequence view annotated by issues in geometry and electron density. Residues are color-coded according to the number of geometric quality criteria for which they contain at least one outlier: green = 0, yellow = 1, orange = 2 and red = 3 or more. A red dot above a residue indicates a poor fit to the electron density ( $\text{RSRZ} > 2$ ). Stretches of 2 or more consecutive residues without any outlier are shown as a green connector. Residues present in the sample, but not in the model, are shown in grey.

- Molecule 1: DNA-DIRECTED RNA POLYMERASE II SUBUNIT RPB1

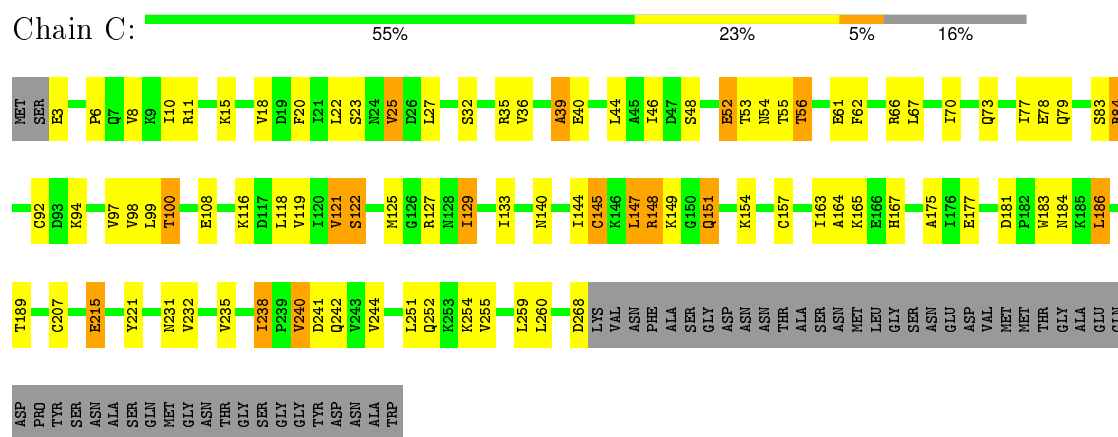




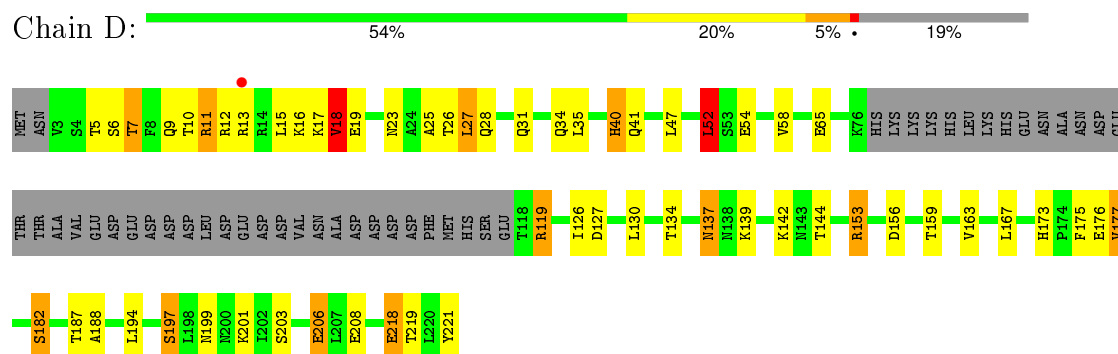




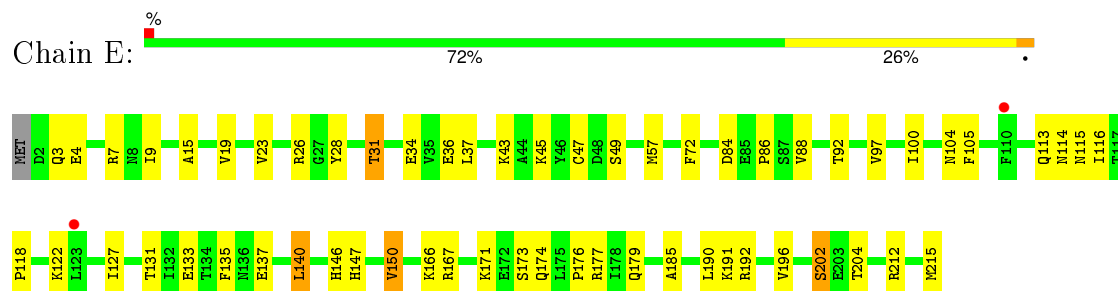
• Molecule 3: DNA-DIRECTED RNA POLYMERASE II SUBUNIT RPB3



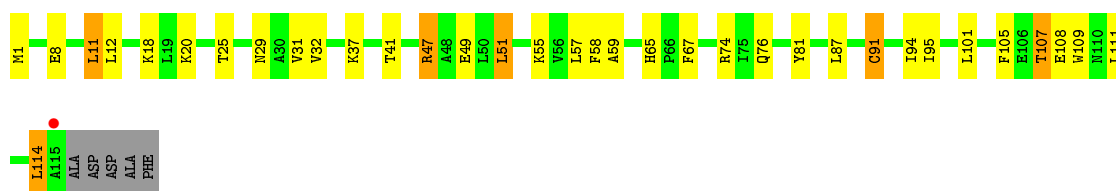
• Molecule 4: DNA-DIRECTED RNA POLYMERASE II SUBUNIT RPB4



• Molecule 5: DNA-DIRECTED RNA POLYMERASES I, II, AND III SUBUNIT RPABC 1



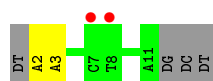




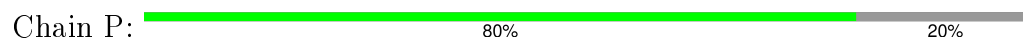
- Molecule 12: DNA-DIRECTED RNA POLYMERASES I, II, AND III SUBUNIT RPABC 4



- Molecule 13: NON TEMPLATE DNA



- Molecule 14: TRANSCRIPT RNA, 5'-R(\*CP\*AP\*GP\*GP\*AP)-3'



- Molecule 15: TEMPLATE DNA



## 4 Data and refinement statistics

Property	Value	Source
Space group	C 2 2 21	Depositor
Cell constants a, b, c, $\alpha$ , $\beta$ , $\gamma$	221.41Å 393.12Å 282.51Å 90.00° 90.00° 90.00°	Depositor
Resolution (Å)	49.85 – 3.50 49.85 – 3.50	Depositor EDS
% Data completeness (in resolution range)	100.0 (49.85-3.50) 100.0 (49.85-3.50)	Depositor EDS
$R_{merge}$	0.89	Depositor
$R_{sym}$	(Not available)	Depositor
$\langle I/\sigma(I) \rangle$ <sup>1</sup>	2.12 (at 3.48Å)	Xtriage
Refinement program	BUSTER 2.11.2	Depositor
R, $R_{free}$	0.158 , 0.184 0.179 , 0.199	Depositor DCC
$R_{free}$ test set	3047 reflections (2.01%)	DCC
Wilson B-factor (Å <sup>2</sup> )	97.9	Xtriage
Anisotropy	0.450	Xtriage
Bulk solvent $k_{sol}$ (e/Å <sup>3</sup> ), $B_{sol}$ (Å <sup>2</sup> )	0.30 , 86.4	EDS
Estimated twinning fraction	0.029 for 1/2*h-1/2*k,-3/2*h-1/2*k,-l 0.035 for 1/2*h+1/2*k,3/2*h-1/2*k,-l	Xtriage
L-test for twinning <sup>2</sup>	$\langle  L  \rangle = 0.44$ , $\langle L^2 \rangle = 0.26$	Xtriage
Outliers	0 of 154282 reflections	Xtriage
$F_o, F_c$ correlation	0.94	EDS
Total number of atoms	31858	wwPDB-VP
Average B, all atoms (Å <sup>2</sup> )	112.0	wwPDB-VP

Xtriage's analysis on translational NCS is as follows: *The largest off-origin peak in the Patterson function is 1.92% of the height of the origin peak. No significant pseudotranslation is detected.*

<sup>1</sup> Intensities estimated from amplitudes.

<sup>2</sup> Theoretical values of  $\langle |L| \rangle$ ,  $\langle L^2 \rangle$  for acentric reflections are 0.5, 0.375 respectively for untwinned datasets, and 0.333, 0.2 for perfectly twinned datasets.

## 5 Model quality ⓘ

### 5.1 Standard geometry ⓘ

Bond lengths and bond angles in the following residue types are not validated in this section: MG, ZN, BRU

The Z score for a bond length (or angle) is the number of standard deviations the observed value is removed from the expected value. A bond length (or angle) with  $|Z| > 5$  is considered an outlier worth inspection. RMSZ is the root-mean-square of all Z scores of the bond lengths (or angles).

Mol	Chain	Bond lengths		Bond angles	
		RMSZ	# Z  >5	RMSZ	# Z  >5
1	A	0.55	0/11374	0.85	9/15383 (0.1%)
2	B	0.51	0/9029	0.81	5/12171 (0.0%)
3	C	0.48	0/2133	0.79	1/2891 (0.0%)
4	D	0.53	0/1444	0.85	2/1935 (0.1%)
5	E	0.48	0/1788	0.74	0/2406
6	F	0.62	0/691	0.83	0/933
7	G	0.53	0/1368	0.82	0/1844
8	H	0.53	0/1086	0.82	0/1470
9	I	0.46	0/989	0.79	0/1331
10	J	0.55	0/541	0.84	0/727
11	K	0.49	0/938	0.73	0/1267
12	L	0.53	0/365	0.96	0/485
13	N	1.18	0/232	1.07	0/356
14	P	1.01	0/101	0.78	0/156
15	T	1.31	1/383 (0.3%)	1.07	1/586 (0.2%)
All	All	0.55	1/32462 (0.0%)	0.83	18/43941 (0.0%)

All (1) bond length outliers are listed below:

Mol	Chain	Res	Type	Atoms	Z	Observed(Å)	Ideal(Å)
15	T	14	DC	C1'-N1	5.25	1.56	1.49

The worst 5 of 18 bond angle outliers are listed below:

Mol	Chain	Res	Type	Atoms	Z	Observed(°)	Ideal(°)
1	A	399	HIS	N-CA-CB	6.75	122.74	110.60
4	D	25	ALA	C-N-CA	6.40	137.71	121.70
1	A	56	PRO	C-N-CA	6.27	137.38	121.70
2	B	1184	GLY	C-N-CA	5.95	136.59	121.70
1	A	34	LYS	C-N-CA	5.83	136.27	121.70

There are no chirality outliers.

There are no planarity outliers.

## 5.2 Too-close contacts

In the following table, the Non-H and H(model) columns list the number of non-hydrogen atoms and hydrogen atoms in the chain respectively. The H(added) column lists the number of hydrogen atoms added and optimized by MolProbity. The Clashes column lists the number of clashes within the asymmetric unit, whereas Symm-Clashes lists symmetry related clashes.

Mol	Chain	Non-H	H(model)	H(added)	Clashes	Symm-Clashes
1	A	11174	0	11233	250	0
2	B	8859	0	8901	158	0
3	C	2095	0	2051	61	0
4	D	1434	0	1460	24	0
5	E	1752	0	1776	28	0
6	F	679	0	701	18	0
7	G	1340	0	1357	33	0
8	H	1068	0	1040	25	0
9	I	971	0	927	23	0
10	J	532	0	542	17	0
11	K	920	0	929	28	0
12	L	363	0	386	6	0
13	N	207	0	114	3	0
14	P	90	0	44	0	0
15	T	365	0	204	5	0
16	A	2	0	0	0	0
16	B	1	0	0	0	0
16	C	1	0	0	0	0
16	I	2	0	0	0	0
16	J	1	0	0	0	0
16	L	1	0	0	0	0
17	A	1	0	0	0	0
All	All	31858	0	31665	586	0

The all-atom clashscore is defined as the number of clashes found per 1000 atoms (including hydrogen atoms). The all-atom clashscore for this structure is 9.

The worst 5 of 586 close contacts within the same asymmetric unit are listed below, sorted by their clash magnitude.

Atom-1	Atom-2	Interatomic distance (Å)	Clash overlap (Å)
1:A:867:ILE:CD1	1:A:867:ILE:CG1	1.82	1.56

*Continued on next page...*

Continued from previous page...

Atom-1	Atom-2	Interatomic distance (Å)	Clash overlap (Å)
1:A:53:LEU:HD23	1:A:54:ASN:H	1.10	1.14
1:A:855:THR:HG21	1:A:857:ARG:HE	1.18	1.06
1:A:726:ARG:HD3	1:A:766:GLY:HA3	1.51	0.91
2:B:114:PRO:HG3	2:B:181:LEU:HD11	1.52	0.91

There are no symmetry-related clashes.

## 5.3 Torsion angles

### 5.3.1 Protein backbone

In the following table, the Percentiles column shows the percent Ramachandran outliers of the chain as a percentile score with respect to all X-ray entries followed by that with respect to entries of similar resolution.

The Analysed column shows the number of residues for which the backbone conformation was analysed, and the total number of residues.

Mol	Chain	Analysed	Favoured	Allowed	Outliers	Percentiles	
1	A	1414/1732 (82%)	1230 (87%)	132 (9%)	52 (4%)	4	36
2	B	1095/1224 (90%)	959 (88%)	94 (9%)	42 (4%)	4	35
3	C	264/318 (83%)	245 (93%)	18 (7%)	1 (0%)	39	81
4	D	174/221 (79%)	149 (86%)	17 (10%)	8 (5%)	3	29
5	E	212/215 (99%)	194 (92%)	14 (7%)	4 (2%)	10	51
6	F	82/155 (53%)	75 (92%)	6 (7%)	1 (1%)	16	61
7	G	169/171 (99%)	159 (94%)	7 (4%)	3 (2%)	11	53
8	H	129/146 (88%)	102 (79%)	20 (16%)	7 (5%)	2	25
9	I	117/122 (96%)	98 (84%)	16 (14%)	3 (3%)	7	45
10	J	63/70 (90%)	52 (82%)	6 (10%)	5 (8%)	1	14
11	K	113/120 (94%)	109 (96%)	3 (3%)	1 (1%)	21	68
12	L	44/70 (63%)	26 (59%)	11 (25%)	7 (16%)	0	3
All	All	3876/4564 (85%)	3398 (88%)	344 (9%)	134 (4%)	4	38

5 of 134 Ramachandran outliers are listed below:

Mol	Chain	Res	Type
1	A	57	ARG

Continued on next page...

*Continued from previous page...*

Mol	Chain	Res	Type
1	A	72	GLU
1	A	169	ASN
1	A	189	ARG
1	A	193	ASP

### 5.3.2 Protein sidechains ⓘ

In the following table, the Percentiles column shows the percent sidechain outliers of the chain as a percentile score with respect to all X-ray entries followed by that with respect to entries of similar resolution.

The Analysed column shows the number of residues for which the sidechain conformation was analysed, and the total number of residues.

Mol	Chain	Analysed	Rotameric	Outliers	Percentiles	
1	A	1240/1519 (82%)	1065 (86%)	175 (14%)	4	24
2	B	966/1061 (91%)	830 (86%)	136 (14%)	4	24
3	C	234/274 (85%)	199 (85%)	35 (15%)	3	21
4	D	160/200 (80%)	129 (81%)	31 (19%)	2	10
5	E	196/197 (100%)	174 (89%)	22 (11%)	7	35
6	F	74/137 (54%)	69 (93%)	5 (7%)	20	60
7	G	152/152 (100%)	133 (88%)	19 (12%)	6	29
8	H	117/128 (91%)	105 (90%)	12 (10%)	9	40
9	I	113/116 (97%)	102 (90%)	11 (10%)	10	42
10	J	60/65 (92%)	51 (85%)	9 (15%)	3	21
11	K	99/102 (97%)	86 (87%)	13 (13%)	5	27
12	L	40/57 (70%)	27 (68%)	13 (32%)	0	2
All	All	3451/4008 (86%)	2970 (86%)	481 (14%)	4	25

5 of 481 residues with a non-rotameric sidechain are listed below:

Mol	Chain	Res	Type
2	B	430	ARG
2	B	908	GLU
9	I	94	ASP
2	B	470	LYS
2	B	615	MET



Some sidechains can be flipped to improve hydrogen bonding and reduce clashes. 5 of 35 such sidechains are listed below:

Mol	Chain	Res	Type
2	B	178	ASN
2	B	842	ASN
9	I	83	ASN
2	B	300	HIS
2	B	465	ASN

### 5.3.3 RNA ⓘ

Mol	Chain	Analysed	Backbone Outliers	Pucker Outliers
14	P	3/5 (60%)	0	0

There are no RNA backbone outliers to report.

There are no RNA pucker outliers to report.

## 5.4 Non-standard residues in protein, DNA, RNA chains ⓘ

1 non-standard protein/DNA/RNA residue is modelled in this entry.

In the following table, the Counts columns list the number of bonds (or angles) for which Mogul statistics could be retrieved, the number of bonds (or angles) that are observed in the model and the number of bonds (or angles) that are defined in the chemical component dictionary. The Link column lists molecule types, if any, to which the group is linked. The Z score for a bond length (or angle) is the number of standard deviations the observed value is removed from the expected value. A bond length (or angle) with  $|Z| > 2$  is considered an outlier worth inspection. RMSZ is the root-mean-square of all Z scores of the bond lengths (or angles).

Mol	Type	Chain	Res	Link	Bond lengths			Bond angles		
					Counts	RMSZ	$\# Z  > 2$	Counts	RMSZ	$\# Z  > 2$
15	BRU	T	22	15,14	13,21,22	1.53	2 (15%)	16,30,33	2.55	3 (18%)

In the following table, the Chirals column lists the number of chiral outliers, the number of chiral centers analysed, the number of these observed in the model and the number defined in the chemical component dictionary. Similar counts are reported in the Torsion and Rings columns. '-' means no outliers of that kind were identified.

Mol	Type	Chain	Res	Link	Chirals	Torsions	Rings
15	BRU	T	22	15,14	-	0/3/21/22	0/2/2/2

All (2) bond length outliers are listed below:

Mol	Chain	Res	Type	Atoms	Z	Observed(Å)	Ideal(Å)
15	T	22	BRU	C6-N1	3.61	1.40	1.35
15	T	22	BRU	C4-C5	3.62	1.43	1.38

All (3) bond angle outliers are listed below:

Mol	Chain	Res	Type	Atoms	Z	Observed(°)	Ideal(°)
15	T	22	BRU	C5-C4-N3	-4.86	118.81	124.00
15	T	22	BRU	O4'-C1'-N1	2.52	112.07	107.72
15	T	22	BRU	C4-N3-C2	8.41	122.52	115.25

There are no chirality outliers.

There are no torsion outliers.

There are no ring outliers.

No monomer is involved in short contacts.

## 5.5 Carbohydrates [i](#)

There are no carbohydrates in this entry.

## 5.6 Ligand geometry [i](#)

Of 9 ligands modelled in this entry, 9 are monoatomic - leaving 0 for Mogul analysis.

There are no bond length outliers.

There are no bond angle outliers.

There are no chirality outliers.

There are no torsion outliers.

There are no ring outliers.

No monomer is involved in short contacts.

## 5.7 Other polymers [i](#)

There are no such residues in this entry.

## 5.8 Polymer linkage issues [i](#)

There are no chain breaks in this entry.

## 6 Fit of model and data

### 6.1 Protein, DNA and RNA chains

In the following table, the column labelled ‘#RSRZ> 2’ contains the number (and percentage) of RSRZ outliers, followed by percent RSRZ outliers for the chain as percentile scores relative to all X-ray entries and entries of similar resolution. The OWAB column contains the minimum, median, 95<sup>th</sup> percentile and maximum values of the occupancy-weighted average B-factor per residue. The column labelled ‘Q< 0.9’ lists the number of (and percentage) of residues with an average occupancy less than 0.9.

Mol	Chain	Analysed	<RSRZ>	#RSRZ>2	OWAB(Å <sup>2</sup> )	Q<0.9
1	A	1422/1732 (82%)	-0.32	7 (0%) 91 88	48, 96, 156, 222	0
2	B	1115/1224 (91%)	-0.20	14 (1%) 79 70	51, 114, 178, 210	0
3	C	266/318 (83%)	-0.36	0 100 100	71, 100, 140, 168	0
4	D	178/221 (80%)	-0.23	1 (0%) 90 85	75, 112, 164, 183	0
5	E	214/215 (99%)	-0.30	2 (0%) 85 78	75, 130, 176, 189	0
6	F	84/155 (54%)	-0.48	0 100 100	51, 75, 104, 120	0
7	G	171/171 (100%)	-0.31	0 100 100	67, 95, 136, 154	0
8	H	133/146 (91%)	0.19	3 (2%) 64 54	109, 137, 176, 195	0
9	I	119/122 (97%)	-0.16	3 (2%) 61 50	109, 138, 177, 196	0
10	J	65/70 (92%)	-0.40	0 100 100	75, 97, 132, 146	0
11	K	115/120 (95%)	-0.37	1 (0%) 85 78	66, 97, 136, 155	0
12	L	46/70 (65%)	-0.02	2 (4%) 39 30	91, 157, 173, 180	0
13	N	10/14 (71%)	0.51	2 (20%) 1 2	192, 220, 260, 264	0
14	P	4/5 (80%)	-0.10	0 100 100	110, 121, 141, 167	0
15	T	17/26 (65%)	0.36	1 (5%) 26 20	122, 191, 266, 267	0
All	All	3959/4609 (85%)	-0.26	36 (0%) 85 78	48, 106, 172, 267	0

The worst 5 of 36 RSRZ outliers are listed below:

Mol	Chain	Res	Type	RSRZ
1	A	1176	LEU	4.3
9	I	119	THR	3.9
1	A	194	ALA	3.4
1	A	1455	PRO	3.3
2	B	883	LEU	3.2

## 6.2 Non-standard residues in protein, DNA, RNA chains ⓘ

In the following table, the Atoms column lists the number of modelled atoms in the group and the number defined in the chemical component dictionary. LLDF column lists the quality of electron density of the group with respect to its neighbouring residues in protein, DNA or RNA chains. The B-factors column lists the minimum, median, 95<sup>th</sup> percentile and maximum values of B factors of atoms in the group. The column labelled 'Q< 0.9' lists the number of atoms with occupancy less than 0.9.

Mol	Type	Chain	Res	Atoms	RSCC	RSR	LLDF	B-factors(Å <sup>2</sup> )	Q<0.9
15	BRU	T	22	20/21	0.90	0.12	-	144,154,161,166	0

## 6.3 Carbohydrates ⓘ

There are no carbohydrates in this entry.

## 6.4 Ligands ⓘ

In the following table, the Atoms column lists the number of modelled atoms in the group and the number defined in the chemical component dictionary. LLDF column lists the quality of electron density of the group with respect to its neighbouring residues in protein, DNA or RNA chains. The B-factors column lists the minimum, median, 95<sup>th</sup> percentile and maximum values of B factors of atoms in the group. The column labelled 'Q< 0.9' lists the number of atoms with occupancy less than 0.9.

Mol	Type	Chain	Res	Atoms	RSCC	RSR	LLDF	B-factors(Å <sup>2</sup> )	Q<0.9
16	ZN	B	2225	1/1	1.00	0.18	-0.10	74,74,74,74	0
16	ZN	I	1121	1/1	1.00	0.12	-0.12	115,115,115,115	0
16	ZN	J	1066	1/1	1.00	0.23	-0.49	83,83,83,83	0
16	ZN	A	2457	1/1	1.00	0.15	-0.93	64,64,64,64	0
16	ZN	C	1269	1/1	1.00	0.11	-1.03	83,83,83,83	0
16	ZN	I	1122	1/1	0.98	0.04	-1.78	178,178,178,178	0
16	ZN	L	1071	1/1	0.96	0.06	-1.98	154,154,154,154	0
16	ZN	A	2456	1/1	0.98	0.07	-2.58	133,133,133,133	0
17	MG	A	2458	1/1	0.99	0.14	-	59,59,59,59	0

## 6.5 Other polymers ⓘ

There are no such residues in this entry.