



Full wwPDB X-ray Structure Validation Report ⓘ

Feb 1, 2016 – 12:23 AM GMT

PDB ID : 2A7R
Title : Crystal structure of human Guanosine Monophosphate reductase 2 (GMPR2)
Authors : Li, J.; Wei, Z.; Zheng, M.; Gu, X.; Deng, Y.; Qiu, R.; Chen, F.; Ji, C.; Gong, W.; Xie, Y.; Mao, Y.
Deposited on : 2005-07-05
Resolution : 3.00 Å(reported)

This is a Full wwPDB X-ray Structure Validation Report for a publicly released PDB entry.
We welcome your comments at validation@mail.wwpdb.org
A user guide is available at
<http://wwpdb.org/validation/2016/XrayValidationReportHelp>
with specific help available everywhere you see the ⓘ symbol.

The following versions of software and data (see [references ⓘ](#)) were used in the production of this report:

MolProbity : 4.02b-467
Mogul : 1.7 (RC4), CSD as536be (2015)
Xtriage (Phenix) : 1.9-1692
EDS : rb-20026688
Percentile statistics : 20151230.v01 (using entries in the PDB archive December 30th 2015)
Refmac : 5.8.0135
CCP4 : 6.5.0
Ideal geometry (proteins) : Engh & Huber (2001)
Ideal geometry (DNA, RNA) : Parkinson et al. (1996)
Validation Pipeline (wwPDB-VP) : trunk26865

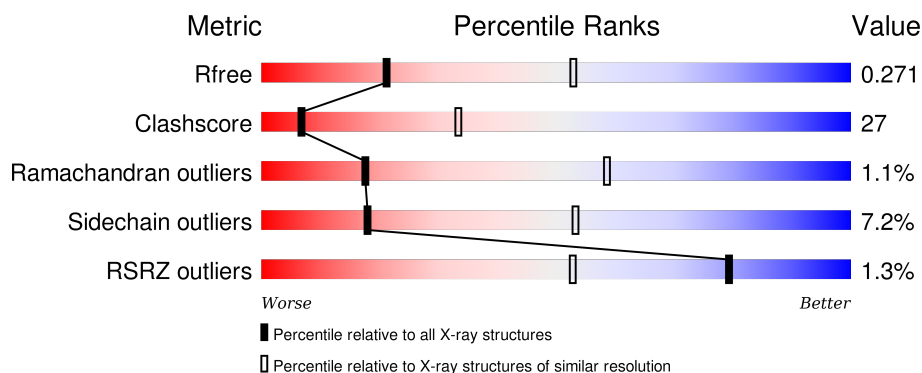
1 Overall quality at a glance

The following experimental techniques were used to determine the structure:

X-RAY DIFFRACTION

The reported resolution of this entry is 3.00 Å.

Percentile scores (ranging between 0-100) for global validation metrics of the entry are shown in the following graphic. The table shows the number of entries on which the scores are based.



Metric	Whole archive (#Entries)	Similar resolution (#Entries, resolution range(Å))
R_{free}	91344	1578 (3.00-3.00)
Clashscore	102246	1912 (3.00-3.00)
Ramachandran outliers	100387	1853 (3.00-3.00)
Sidechain outliers	100360	1856 (3.00-3.00)
RSRZ outliers	91569	1592 (3.00-3.00)

The table below summarises the geometric issues observed across the polymeric chains and their fit to the electron density. The red, orange, yellow and green segments on the lower bar indicate the fraction of residues that contain outliers for ≥ 3 , 2, 1 and 0 types of geometric quality criteria. A grey segment represents the fraction of residues that are not modelled. The numeric value for each fraction is indicated below the corresponding segment, with a dot representing fractions $\leq 5\%$. The upper red bar (where present) indicates the fraction of residues that have poor fit to the electron density. The numeric value is given above the bar.

Mol	Chain	Length	Quality of chain
1	A	366	
1	B	366	
1	C	366	
1	D	366	

2 Entry composition

There are 4 unique types of molecules in this entry. The entry contains 9586 atoms, of which 0 are hydrogens and 0 are deuteriums.

In the tables below, the ZeroOcc column contains the number of atoms modelled with zero occupancy, the AltConf column contains the number of residues with at least one atom in alternate conformation and the Trace column contains the number of residues modelled with at most 2 atoms.

- Molecule 1 is a protein called GMP reductase 2.

Mol	Chain	Residues	Atoms					ZeroOcc	AltConf	Trace
1	A	338	Total	C	N	O	S	0	0	0
			2426	1527	411	469	19			
1	B	337	Total	C	N	O	S	0	0	0
			2427	1528	422	458	19			
1	C	327	Total	C	N	O	S	0	0	0
			2329	1465	401	444	19			
1	D	317	Total	C	N	O	S	0	0	0
			2280	1436	392	436	16			

There are 72 discrepancies between the modelled and reference sequences:

Chain	Residue	Modelled	Actual	Comment	Reference
A	-17	MET	-	EXPRESSION TAG	UNP Q9P2T1
A	-16	ARG	-	EXPRESSION TAG	UNP Q9P2T1
A	-15	GLY	-	EXPRESSION TAG	UNP Q9P2T1
A	-14	SER	-	EXPRESSION TAG	UNP Q9P2T1
A	-13	HIS	-	EXPRESSION TAG	UNP Q9P2T1
A	-12	HIS	-	EXPRESSION TAG	UNP Q9P2T1
A	-11	HIS	-	EXPRESSION TAG	UNP Q9P2T1
A	-10	HIS	-	EXPRESSION TAG	UNP Q9P2T1
A	-9	HIS	-	EXPRESSION TAG	UNP Q9P2T1
A	-8	HIS	-	EXPRESSION TAG	UNP Q9P2T1
A	-7	GLY	-	EXPRESSION TAG	UNP Q9P2T1
A	-6	SER	-	EXPRESSION TAG	UNP Q9P2T1
A	-5	ALA	-	EXPRESSION TAG	UNP Q9P2T1
A	-4	CYS	-	EXPRESSION TAG	UNP Q9P2T1
A	-3	GLU	-	EXPRESSION TAG	UNP Q9P2T1
A	-2	LEU	-	EXPRESSION TAG	UNP Q9P2T1
A	-1	GLY	-	EXPRESSION TAG	UNP Q9P2T1
A	0	THR	-	EXPRESSION TAG	UNP Q9P2T1
B	-17	MET	-	EXPRESSION TAG	UNP Q9P2T1
B	-16	ARG	-	EXPRESSION TAG	UNP Q9P2T1
B	-15	GLY	-	EXPRESSION TAG	UNP Q9P2T1

Continued on next page...

Continued from previous page...

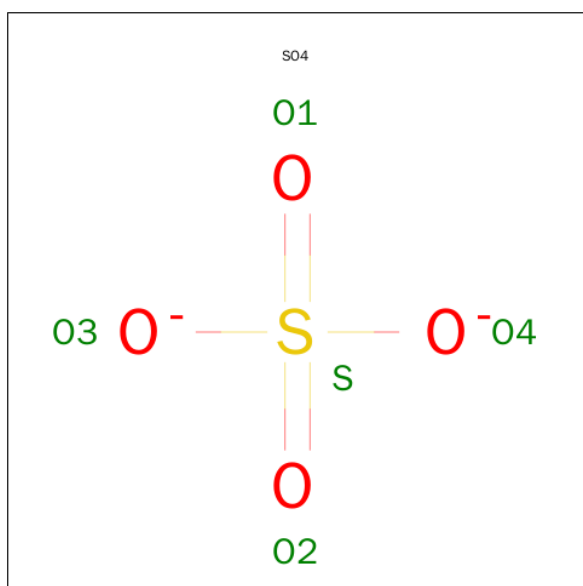
Chain	Residue	Modelled	Actual	Comment	Reference
B	-14	SER	-	EXPRESSION TAG	UNP Q9P2T1
B	-13	HIS	-	EXPRESSION TAG	UNP Q9P2T1
B	-12	HIS	-	EXPRESSION TAG	UNP Q9P2T1
B	-11	HIS	-	EXPRESSION TAG	UNP Q9P2T1
B	-10	HIS	-	EXPRESSION TAG	UNP Q9P2T1
B	-9	HIS	-	EXPRESSION TAG	UNP Q9P2T1
B	-8	HIS	-	EXPRESSION TAG	UNP Q9P2T1
B	-7	GLY	-	EXPRESSION TAG	UNP Q9P2T1
B	-6	SER	-	EXPRESSION TAG	UNP Q9P2T1
B	-5	ALA	-	EXPRESSION TAG	UNP Q9P2T1
B	-4	CYS	-	EXPRESSION TAG	UNP Q9P2T1
B	-3	GLU	-	EXPRESSION TAG	UNP Q9P2T1
B	-2	LEU	-	EXPRESSION TAG	UNP Q9P2T1
B	-1	GLY	-	EXPRESSION TAG	UNP Q9P2T1
B	0	THR	-	EXPRESSION TAG	UNP Q9P2T1
C	-17	MET	-	EXPRESSION TAG	UNP Q9P2T1
C	-16	ARG	-	EXPRESSION TAG	UNP Q9P2T1
C	-15	GLY	-	EXPRESSION TAG	UNP Q9P2T1
C	-14	SER	-	EXPRESSION TAG	UNP Q9P2T1
C	-13	HIS	-	EXPRESSION TAG	UNP Q9P2T1
C	-12	HIS	-	EXPRESSION TAG	UNP Q9P2T1
C	-11	HIS	-	EXPRESSION TAG	UNP Q9P2T1
C	-10	HIS	-	EXPRESSION TAG	UNP Q9P2T1
C	-9	HIS	-	EXPRESSION TAG	UNP Q9P2T1
C	-8	HIS	-	EXPRESSION TAG	UNP Q9P2T1
C	-7	GLY	-	EXPRESSION TAG	UNP Q9P2T1
C	-6	SER	-	EXPRESSION TAG	UNP Q9P2T1
C	-5	ALA	-	EXPRESSION TAG	UNP Q9P2T1
C	-4	CYS	-	EXPRESSION TAG	UNP Q9P2T1
C	-3	GLU	-	EXPRESSION TAG	UNP Q9P2T1
C	-2	LEU	-	EXPRESSION TAG	UNP Q9P2T1
C	-1	GLY	-	EXPRESSION TAG	UNP Q9P2T1
C	0	THR	-	EXPRESSION TAG	UNP Q9P2T1
D	-17	MET	-	EXPRESSION TAG	UNP Q9P2T1
D	-16	ARG	-	EXPRESSION TAG	UNP Q9P2T1
D	-15	GLY	-	EXPRESSION TAG	UNP Q9P2T1
D	-14	SER	-	EXPRESSION TAG	UNP Q9P2T1
D	-13	HIS	-	EXPRESSION TAG	UNP Q9P2T1
D	-12	HIS	-	EXPRESSION TAG	UNP Q9P2T1
D	-11	HIS	-	EXPRESSION TAG	UNP Q9P2T1
D	-10	HIS	-	EXPRESSION TAG	UNP Q9P2T1
D	-9	HIS	-	EXPRESSION TAG	UNP Q9P2T1

Continued on next page...

Continued from previous page...

Chain	Residue	Modelled	Actual	Comment	Reference
D	-8	HIS	-	EXPRESSION TAG	UNP Q9P2T1
D	-7	GLY	-	EXPRESSION TAG	UNP Q9P2T1
D	-6	SER	-	EXPRESSION TAG	UNP Q9P2T1
D	-5	ALA	-	EXPRESSION TAG	UNP Q9P2T1
D	-4	CYS	-	EXPRESSION TAG	UNP Q9P2T1
D	-3	GLU	-	EXPRESSION TAG	UNP Q9P2T1
D	-2	LEU	-	EXPRESSION TAG	UNP Q9P2T1
D	-1	GLY	-	EXPRESSION TAG	UNP Q9P2T1
D	0	THR	-	EXPRESSION TAG	UNP Q9P2T1

- Molecule 2 is SULFATE ION (three-letter code: SO4) (formula: O₄S).



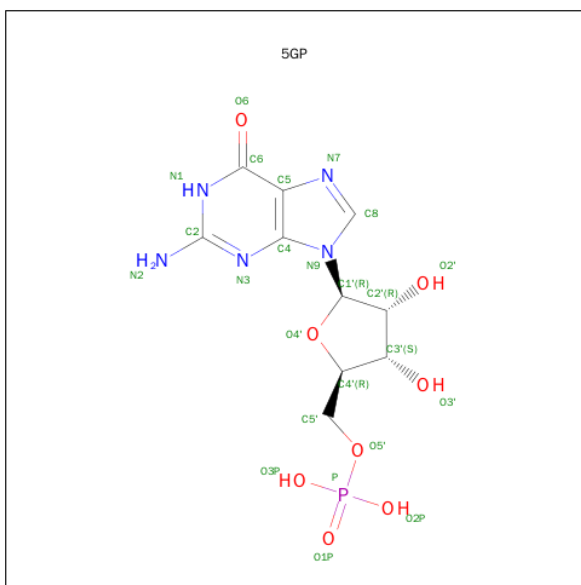
Mol	Chain	Residues	Atoms			ZeroOcc	AltConf
2	A	1	Total	O	S	0	0
			5	4	1		
2	A	1	Total	O	S	0	0
			5	4	1		
2	B	1	Total	O	S	0	0
			5	4	1		
2	B	1	Total	O	S	0	0
			5	4	1		
2	C	1	Total	O	S	0	0
			5	4	1		
2	C	1	Total	O	S	0	0
			5	4	1		
2	D	1	Total	O	S	0	0
			5	4	1		

Continued on next page...

Continued from previous page...

Mol	Chain	Residues	Atoms			ZeroOcc	AltConf
2	D	1	Total	O	S	0	0
			5	4	1		

- Molecule 3 is GUANOSINE-5'-MONOPHOSPHATE (three-letter code: 5GP) (formula: $C_{10}H_{14}N_5O_8P$).



Mol	Chain	Residues	Atoms					ZeroOcc	AltConf
3	A	1	Total	C	N	O	P	0	0
			24	10	5	8	1		
3	B	1	Total	C	N	O	P	0	0
			24	10	5	8	1		
3	C	1	Total	C	N	O	P	0	0
			24	10	5	8	1		

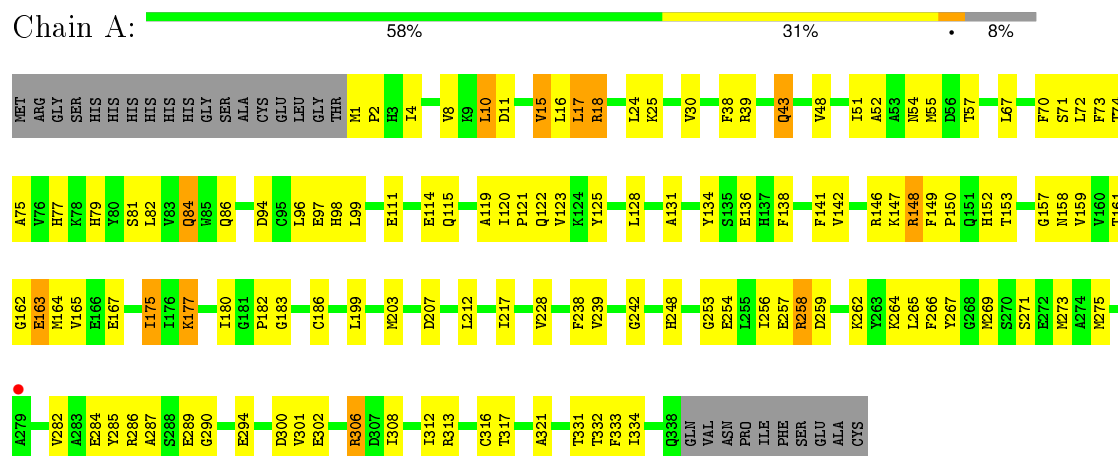
- Molecule 4 is water.

Mol	Chain	Residues	Atoms		ZeroOcc	AltConf
4	A	3	Total	O	0	0
			3	3		
4	B	4	Total	O	0	0
			4	4		
4	C	3	Total	O	0	0
			3	3		
4	D	2	Total	O	0	0
			2	2		

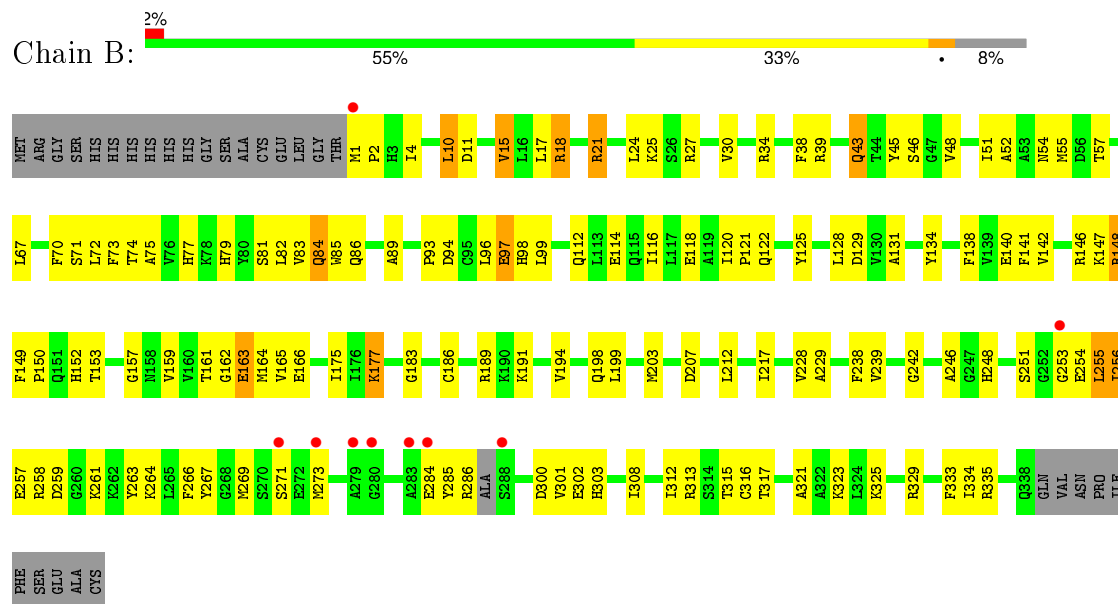
3 Residue-property plots

These plots are drawn for all protein, RNA and DNA chains in the entry. The first graphic for a chain summarises the proportions of errors displayed in the second graphic. The second graphic shows the sequence view annotated by issues in geometry and electron density. Residues are color-coded according to the number of geometric quality criteria for which they contain at least one outlier: green = 0, yellow = 1, orange = 2 and red = 3 or more. A red dot above a residue indicates a poor fit to the electron density ($RSRZ > 2$). Stretches of 2 or more consecutive residues without any outlier are shown as a green connector. Residues present in the sample, but not in the model, are shown in grey.

• Molecule 1: GMP reductase 2



• Molecule 1: GMP reductase 2



• Molecule 1: GMP reductase 2



4 Data and refinement statistics

Property	Value	Source
Space group	P 32 2 1	Depositor
Cell constants a, b, c, α , β , γ	110.56Å 110.56Å 209.75Å 90.00° 90.00° 120.00°	Depositor
Resolution (Å)	48.90 – 3.00 48.90 – 3.00	Depositor EDS
% Data completeness (in resolution range)	96.2 (48.90-3.00) 96.3 (48.90-3.00)	Depositor EDS
R_{merge}	(Not available)	Depositor
R_{sym}	(Not available)	Depositor
$\langle I/\sigma(I) \rangle$ ¹	2.84 (at 3.01Å)	Xtriage
Refinement program	CNS 1.1	Depositor
R, R_{free}	0.228 , 0.276 0.227 , 0.271	Depositor DCC
R_{free} test set	2935 reflections (10.02%)	DCC
Wilson B-factor (Å ²)	60.9	Xtriage
Anisotropy	0.138	Xtriage
Bulk solvent k_{sol} (e/Å ³), B_{sol} (Å ²)	0.35 , 80.7	EDS
Estimated twinning fraction	0.024 for -h,-k,l	Xtriage
L-test for twinning ²	$\langle L \rangle = 0.49$, $\langle L^2 \rangle = 0.33$	Xtriage
Outliers	0 of 30423 reflections	Xtriage
F_o, F_c correlation	0.91	EDS
Total number of atoms	9586	wwPDB-VP
Average B, all atoms (Å ²)	52.0	wwPDB-VP

Xtriage's analysis on translational NCS is as follows: *The largest off-origin peak in the Patterson function is 2.76% of the height of the origin peak. No significant pseudotranslation is detected.*

¹Intensities estimated from amplitudes.

²Theoretical values of $\langle |L| \rangle$, $\langle L^2 \rangle$ for acentric reflections are 0.5, 0.375 respectively for untwinned datasets, and 0.333, 0.2 for perfectly twinned datasets.

5 Model quality [i](#)

5.1 Standard geometry [i](#)

Bond lengths and bond angles in the following residue types are not validated in this section: 5GP, SO4

The Z score for a bond length (or angle) is the number of standard deviations the observed value is removed from the expected value. A bond length (or angle) with $|Z| > 5$ is considered an outlier worth inspection. RMSZ is the root-mean-square of all Z scores of the bond lengths (or angles).

Mol	Chain	Bond lengths		Bond angles	
		RMSZ	# Z >5	RMSZ	# Z >5
1	A	0.44	0/2469	0.67	1/3350 (0.0%)
1	B	0.43	0/2470	0.68	2/3344 (0.1%)
1	C	0.46	0/2370	0.66	1/3214 (0.0%)
1	D	0.44	0/2321	0.69	2/3152 (0.1%)
All	All	0.44	0/9630	0.67	6/13060 (0.0%)

There are no bond length outliers.

All (6) bond angle outliers are listed below:

Mol	Chain	Res	Type	Atoms	Z	Observed(°)	Ideal(°)
1	D	148	ARG	NE-CZ-NH2	-6.18	117.21	120.30
1	D	306	ARG	NE-CZ-NH1	-5.58	117.51	120.30
1	A	306	ARG	NE-CZ-NH1	-5.47	117.56	120.30
1	B	97	GLU	N-CA-C	-5.34	96.58	111.00
1	B	93	PRO	N-CA-CB	5.09	109.41	103.30
1	C	93	PRO	N-CA-CB	5.09	109.40	103.30

There are no chirality outliers.

There are no planarity outliers.

5.2 Too-close contacts [i](#)

In the following table, the Non-H and H(model) columns list the number of non-hydrogen atoms and hydrogen atoms in the chain respectively. The H(added) column lists the number of hydrogen atoms added and optimized by MolProbity. The Clashes column lists the number of clashes within the asymmetric unit, whereas Symm-Clashes lists symmetry related clashes.

Mol	Chain	Non-H	H(model)	H(added)	Clashes	Symm-Clashes
1	A	2426	0	2240	141	0

Continued on next page...

Continued from previous page...

Mol	Chain	Non-H	H(model)	H(added)	Clashes	Symm-Clashes
1	B	2427	0	2264	139	1
1	C	2329	0	2138	126	0
1	D	2280	0	2101	125	0
2	A	10	0	0	0	0
2	B	10	0	0	0	0
2	C	10	0	0	0	0
2	D	10	0	0	1	0
3	A	24	0	12	1	0
3	B	24	0	12	1	0
3	C	24	0	12	1	0
4	A	3	0	0	0	0
4	B	4	0	0	0	0
4	C	3	0	0	1	0
4	D	2	0	0	0	0
All	All	9586	0	8779	493	1

The all-atom clashscore is defined as the number of clashes found per 1000 atoms (including hydrogen atoms). The all-atom clashscore for this structure is 27.

All (493) close contacts within the same asymmetric unit are listed below, sorted by their clash magnitude.

Atom-1	Atom-2	Interatomic distance (Å)	Clash overlap (Å)
1:B:82:LEU:O	1:B:86:GLN:HG3	1.47	1.14
1:B:134:TYR:HA	1:B:164:MET:HE3	1.31	1.12
1:A:164:MET:HE2	1:D:21:ARG:HG2	1.28	1.08
1:B:164:MET:HE2	1:C:21:ARG:HG2	1.40	1.00
1:A:167:GLU:CD	1:D:21:ARG:HH21	1.70	0.94
1:B:164:MET:CE	1:C:21:ARG:HG2	1.98	0.92
1:B:84:GLN:H	1:B:84:GLN:HE21	1.14	0.92
1:D:84:GLN:HE21	1:D:84:GLN:H	1.17	0.88
1:B:325:LYS:HE2	1:B:329:ARG:NH2	1.88	0.88
1:D:335:ARG:CB	1:D:335:ARG:HH11	1.87	0.87
1:A:134:TYR:HA	1:A:164:MET:HE3	1.57	0.86
1:C:18:ARG:HG3	1:C:18:ARG:HH11	1.39	0.86
1:B:134:TYR:CA	1:B:164:MET:HE3	2.05	0.85
1:C:24:LEU:HD12	1:C:317:THR:HA	1.58	0.84
1:D:18:ARG:HG3	1:D:18:ARG:HH11	1.43	0.84
1:B:286:ARG:HA	1:B:286:ARG:HE	1.41	0.84
1:A:81:SER:CB	1:A:84:GLN:HE22	1.91	0.83
1:B:81:SER:CB	1:B:84:GLN:HE22	1.91	0.83
1:A:84:GLN:H	1:A:84:GLN:HE21	1.22	0.82

Continued on next page...

Continued from previous page...

Atom-1	Atom-2	Interatomic distance (Å)	Clash overlap (Å)
1:D:81:SER:CB	1:D:84:GLN:HE22	1.92	0.82
1:A:18:ARG:HH11	1:A:18:ARG:HG3	1.44	0.82
1:D:114:GLU:HG2	1:D:148:ARG:HH11	1.43	0.81
1:C:84:GLN:HE21	1:C:84:GLN:H	1.26	0.81
1:C:81:SER:CB	1:C:84:GLN:HE22	1.93	0.81
1:D:134:TYR:HA	1:D:164:MET:HE3	1.63	0.81
1:B:18:ARG:HH11	1:B:18:ARG:HG3	1.47	0.80
1:B:24:LEU:HD12	1:B:317:THR:HA	1.62	0.80
1:B:128:LEU:HD22	1:B:141:PHE:HE2	1.46	0.79
1:D:43:GLN:HA	1:D:43:GLN:HE21	1.47	0.79
1:A:4:ILE:HD11	1:D:203:MET:HE3	1.64	0.79
1:A:24:LEU:HD12	1:A:317:THR:HA	1.65	0.79
1:C:263:TYR:HB3	1:C:294:GLU:HB3	1.65	0.79
1:A:4:ILE:HD11	1:D:203:MET:CE	2.13	0.78
1:B:203:MET:CE	1:D:4:ILE:HD11	2.14	0.78
1:A:128:LEU:HD22	1:A:141:PHE:HE2	1.48	0.78
1:D:57:THR:HG22	1:D:253:GLY:N	1.98	0.78
1:D:24:LEU:HD12	1:D:317:THR:HA	1.65	0.77
1:B:269:MET:HB3	1:B:285:TYR:CD2	2.19	0.77
1:B:18:ARG:HB2	1:B:334:ILE:HD13	1.67	0.77
1:C:43:GLN:HE21	1:C:43:GLN:HA	1.49	0.77
1:A:39:ARG:HD2	1:A:212:LEU:O	1.85	0.77
1:B:325:LYS:HE2	1:B:329:ARG:HH22	1.46	0.76
1:A:269:MET:HB2	1:A:286:ARG:HG3	1.67	0.76
1:D:128:LEU:HD22	1:D:141:PHE:HE2	1.50	0.76
1:A:217:ILE:HG12	1:A:238:PHE:HB2	1.69	0.75
1:D:39:ARG:HD2	1:D:212:LEU:O	1.88	0.74
1:D:121:PRO:HG2	1:D:122:GLN:NE2	2.03	0.73
1:C:161:THR:HB	1:C:163:GLU:OE1	1.89	0.73
1:D:228:VAL:HG13	1:D:239:VAL:HG11	1.69	0.73
1:A:82:LEU:O	1:A:86:GLN:HG2	1.87	0.73
1:B:43:GLN:HA	1:B:43:GLN:HE21	1.53	0.73
1:A:257:GLU:HB3	1:A:262:LYS:HG2	1.69	0.73
1:A:16:LEU:HD11	1:C:189:ARG:HD3	1.71	0.73
1:B:39:ARG:HD2	1:B:212:LEU:O	1.89	0.72
1:A:157:GLY:HA3	1:A:177:LYS:HB2	1.70	0.72
1:B:18:ARG:HB2	1:B:334:ILE:CD1	2.20	0.72
1:C:263:TYR:CD2	1:C:294:GLU:HB3	2.24	0.71
1:A:256:ILE:HD11	1:A:265:LEU:HD21	1.71	0.71
1:A:43:GLN:HA	1:A:43:GLN:HE21	1.55	0.71
1:D:18:ARG:HB2	1:D:334:ILE:HD13	1.72	0.71

Continued on next page...

Continued from previous page...

Atom-1	Atom-2	Interatomic distance (Å)	Clash overlap (Å)
1:D:57:THR:HG22	1:D:253:GLY:H	1.53	0.71
1:C:183:GLY:HA3	1:C:186:CYS:HB3	1.72	0.71
1:C:157:GLY:HA3	1:C:177:LYS:HB2	1.72	0.70
1:B:21:ARG:HG2	1:D:164:MET:CE	2.21	0.70
1:D:157:GLY:HA3	1:D:177:LYS:HB2	1.73	0.70
1:B:269:MET:HB3	1:B:285:TYR:HD2	1.56	0.69
1:A:134:TYR:HA	1:A:164:MET:CE	2.22	0.69
1:D:121:PRO:HG2	1:D:122:GLN:HE22	1.57	0.69
1:D:125:TYR:CD2	1:D:153:THR:HB	2.27	0.69
1:C:183:GLY:CA	1:C:186:CYS:HB3	2.22	0.69
1:C:217:ILE:HG12	1:C:238:PHE:HB2	1.75	0.68
1:B:157:GLY:HA3	1:B:177:LYS:HB2	1.74	0.68
1:B:21:ARG:HG2	1:D:164:MET:HE2	1.75	0.68
1:A:183:GLY:HA3	1:A:186:CYS:HB3	1.75	0.68
1:C:128:LEU:HD22	1:C:141:PHE:HE2	1.59	0.68
1:A:256:ILE:HD11	1:A:265:LEU:CD2	2.22	0.68
1:B:255:LEU:HD23	1:B:264:LYS:HD3	1.76	0.67
1:A:57:THR:HG22	1:A:253:GLY:N	2.09	0.67
1:B:84:GLN:N	1:B:84:GLN:HE21	1.91	0.67
1:B:161:THR:HB	1:B:163:GLU:OE1	1.95	0.67
1:A:203:MET:CE	1:C:4:ILE:HD11	2.24	0.67
1:D:217:ILE:HG12	1:D:238:PHE:HB2	1.76	0.67
1:B:203:MET:HE3	1:D:4:ILE:HD11	1.77	0.67
1:A:164:MET:HE2	1:D:21:ARG:CG	2.16	0.66
1:B:286:ARG:HA	1:B:286:ARG:NE	2.11	0.66
1:D:134:TYR:HA	1:D:164:MET:CE	2.24	0.66
1:B:261:LYS:HB2	1:B:263:TYR:HE1	1.60	0.66
1:B:217:ILE:HG12	1:B:238:PHE:HB2	1.78	0.66
1:C:67:LEU:HB3	1:C:72:LEU:HB2	1.78	0.66
1:C:18:ARG:HH11	1:C:18:ARG:CG	2.09	0.65
1:B:203:MET:HE1	1:D:4:ILE:HD11	1.78	0.65
1:A:131:ALA:HB2	1:A:284:GLU:O	1.96	0.65
1:B:125:TYR:CD2	1:B:153:THR:HB	2.32	0.65
1:A:183:GLY:CA	1:A:186:CYS:HB3	2.25	0.65
1:B:114:GLU:HG2	1:B:148:ARG:HH11	1.62	0.65
1:D:128:LEU:HD22	1:D:141:PHE:CE2	2.32	0.64
1:B:15:VAL:CG2	1:B:333:PHE:HB3	2.27	0.64
1:B:57:THR:HG22	1:B:253:GLY:N	2.13	0.64
1:D:335:ARG:HB3	1:D:335:ARG:HH11	1.62	0.64
1:B:89:ALA:HA	1:B:96:LEU:HD21	1.78	0.64
1:D:338:GLN:O	1:D:339:GLN:CB	2.46	0.64

Continued on next page...

Continued from previous page...

Atom-1	Atom-2	Interatomic distance (Å)	Clash overlap (Å)
1:D:18:ARG:HB2	1:D:334:ILE:CD1	2.28	0.64
1:B:4:ILE:HD11	1:C:203:MET:CE	2.27	0.64
1:D:70:PHE:O	1:D:71:SER:HB2	1.98	0.64
1:D:15:VAL:CG2	1:D:333:PHE:HB3	2.27	0.63
1:A:125:TYR:CD2	1:A:153:THR:HB	2.34	0.63
1:A:267:TYR:HB3	1:A:273:MET:HE2	1.78	0.63
1:B:84:GLN:H	1:B:84:GLN:NE2	1.93	0.63
1:C:228:VAL:HG13	1:C:239:VAL:HG11	1.79	0.63
1:C:15:VAL:CG2	1:C:333:PHE:HB3	2.29	0.63
1:A:248:HIS:CD2	1:A:301:VAL:HA	2.34	0.63
1:A:15:VAL:CG2	1:A:333:PHE:HB3	2.28	0.63
1:B:1:MET:HB3	1:B:2:PRO:HA	1.80	0.63
1:C:39:ARG:HD2	1:C:212:LEU:O	1.98	0.63
1:C:43:GLN:HE21	1:C:43:GLN:CA	2.12	0.62
1:B:43:GLN:CA	1:B:43:GLN:HE21	2.12	0.62
1:A:70:PHE:O	1:A:71:SER:HB2	1.99	0.62
1:A:134:TYR:CA	1:A:164:MET:HE3	2.28	0.62
1:A:128:LEU:HD22	1:A:141:PHE:CE2	2.32	0.62
1:A:10:LEU:HD13	1:A:199:LEU:HD23	1.81	0.62
1:D:161:THR:HB	1:D:163:GLU:OE1	1.99	0.62
1:B:148:ARG:HD3	1:B:149:PHE:CE1	2.35	0.62
1:D:183:GLY:CA	1:D:186:CYS:HB3	2.30	0.62
1:A:18:ARG:HB2	1:A:334:ILE:CD1	2.29	0.62
1:A:18:ARG:HB2	1:A:334:ILE:HD13	1.82	0.62
1:A:269:MET:SD	1:A:286:ARG:HD2	2.40	0.62
1:D:18:ARG:CG	1:D:18:ARG:HH11	2.12	0.62
1:A:67:LEU:HB3	1:A:72:LEU:HB2	1.81	0.62
1:C:125:TYR:CD2	1:C:153:THR:HB	2.35	0.61
1:D:84:GLN:HE21	1:D:84:GLN:N	1.95	0.61
1:D:43:GLN:HE21	1:D:43:GLN:CA	2.12	0.61
1:D:183:GLY:HA3	1:D:186:CYS:HB3	1.81	0.61
1:C:263:TYR:HD2	1:C:294:GLU:HB3	1.65	0.61
1:D:248:HIS:CD2	1:D:301:VAL:HA	2.35	0.61
1:A:15:VAL:HG21	1:A:333:PHE:HB3	1.83	0.61
1:A:161:THR:HB	1:A:163:GLU:OE1	2.01	0.61
1:B:30:VAL:HB	1:B:313:ARG:HG2	1.83	0.61
1:B:70:PHE:O	1:B:71:SER:HB2	2.01	0.60
1:A:55:MET:CE	1:A:242:GLY:HA3	2.31	0.60
1:B:85:TRP:HB3	1:B:120:ILE:HD11	1.82	0.60
1:B:183:GLY:HA3	1:B:186:CYS:HB3	1.84	0.60
1:A:164:MET:CE	1:D:21:ARG:HG2	2.19	0.60

Continued on next page...

Continued from previous page...

Atom-1	Atom-2	Interatomic distance (Å)	Clash overlap (Å)
1:B:128:LEU:HD22	1:B:141:PHE:CE2	2.33	0.60
1:D:335:ARG:CG	1:D:335:ARG:HH11	2.14	0.60
1:C:148:ARG:HD3	1:C:149:PHE:CE1	2.37	0.60
1:B:10:LEU:HD13	1:B:199:LEU:HD23	1.84	0.60
1:C:52:ALA:HB2	1:C:67:LEU:HD11	1.82	0.60
1:D:134:TYR:CA	1:D:164:MET:HE3	2.31	0.59
1:D:82:LEU:HD23	1:D:86:GLN:HG3	1.84	0.59
1:A:203:MET:HE3	1:C:4:ILE:HD11	1.84	0.59
1:C:73:PHE:CE1	1:C:98:HIS:HA	2.38	0.59
1:D:147:LYS:O	1:D:150:PRO:HD3	2.02	0.59
1:B:43:GLN:HA	1:B:43:GLN:NE2	2.17	0.59
1:C:82:LEU:HD23	1:C:82:LEU:O	2.02	0.59
1:B:267:TYR:HB2	1:B:271:SER:OG	2.03	0.59
1:C:70:PHE:O	1:C:71:SER:HB2	2.03	0.59
1:A:258:ARG:HG2	1:A:259:ASP:N	2.16	0.59
1:D:43:GLN:HA	1:D:43:GLN:NE2	2.15	0.59
1:B:73:PHE:CE1	1:B:98:HIS:HA	2.37	0.59
1:D:138:PHE:O	1:D:142:VAL:HG23	2.02	0.59
1:D:335:ARG:CA	1:D:335:ARG:HH11	2.16	0.59
1:A:30:VAL:HB	1:A:313:ARG:HG2	1.83	0.59
1:C:267:TYR:HB2	1:C:271:SER:OG	2.03	0.58
1:D:162:GLY:O	1:D:166:GLU:HG3	2.03	0.58
1:A:164:MET:HE1	1:D:21:ARG:HD3	1.84	0.58
1:C:43:GLN:NE2	1:C:43:GLN:HA	2.17	0.58
1:D:67:LEU:HB3	1:D:72:LEU:HB2	1.83	0.58
1:C:84:GLN:H	1:C:84:GLN:NE2	2.00	0.58
1:C:52:ALA:HB2	1:C:67:LEU:CD1	2.34	0.58
1:B:15:VAL:HG21	1:B:333:PHE:HB3	1.85	0.58
1:B:183:GLY:CA	1:B:186:CYS:HB3	2.32	0.58
1:D:52:ALA:HB2	1:D:67:LEU:HD11	1.86	0.58
1:B:52:ALA:HB2	1:B:67:LEU:HD11	1.85	0.58
1:B:1:MET:HB3	1:B:2:PRO:CA	2.34	0.58
1:B:147:LYS:O	1:B:150:PRO:HD3	2.04	0.58
1:B:18:ARG:HH11	1:B:18:ARG:CG	2.16	0.57
1:A:43:GLN:CA	1:A:43:GLN:HE21	2.17	0.57
1:C:48:VAL:HB	1:C:72:LEU:CD2	2.34	0.57
1:D:93:PRO:O	1:D:96:LEU:HG	2.04	0.57
1:A:254:GLU:O	1:A:264:LYS:HA	2.04	0.57
1:D:114:GLU:OE1	1:D:148:ARG:HD2	2.04	0.57
1:D:148:ARG:HD3	1:D:149:PHE:CE1	2.38	0.57
1:C:248:HIS:CD2	1:C:301:VAL:HA	2.39	0.57

Continued on next page...

Continued from previous page...

Atom-1	Atom-2	Interatomic distance (Å)	Clash overlap (Å)
1:A:82:LEU:O	1:A:82:LEU:HD23	2.05	0.57
1:B:67:LEU:HB3	1:B:72:LEU:HB2	1.86	0.57
1:A:228:VAL:HG13	1:A:239:VAL:HG11	1.87	0.57
1:D:21:ARG:NH1	1:D:21:ARG:HG3	2.19	0.56
1:D:304:THR:O	1:D:308:ILE:HG13	2.04	0.56
1:D:84:GLN:H	1:D:84:GLN:NE2	1.95	0.56
1:C:252:GLY:O	1:C:264:LYS:HE2	2.05	0.56
1:A:161:THR:HG21	1:D:18:ARG:NH2	2.20	0.56
1:A:52:ALA:HB2	1:A:67:LEU:HD11	1.85	0.56
1:C:55:MET:CE	1:C:242:GLY:HA3	2.36	0.56
1:A:18:ARG:CG	1:A:18:ARG:HH11	2.18	0.56
1:B:85:TRP:HB3	1:B:120:ILE:CD1	2.35	0.56
1:A:120:ILE:CG2	1:A:123:VAL:HG23	2.35	0.56
1:B:131:ALA:HA	1:B:286:ARG:C	2.26	0.56
1:A:114:GLU:HG2	1:A:148:ARG:HH11	1.70	0.56
1:B:138:PHE:O	1:B:142:VAL:HG23	2.05	0.56
1:A:175:ILE:CG2	1:A:217:ILE:HG13	2.36	0.56
1:A:16:LEU:HD13	1:C:195:GLY:HA3	1.86	0.56
1:A:97:GLU:O	1:A:98:HIS:HB2	2.05	0.56
1:A:84:GLN:NE2	1:A:84:GLN:H	1.99	0.56
1:D:51:ILE:HG12	1:D:73:PHE:HB3	1.88	0.56
1:D:15:VAL:HG21	1:D:333:PHE:HB3	1.87	0.55
1:B:263:TYR:O	1:B:264:LYS:HG2	2.06	0.55
1:C:15:VAL:HG21	1:C:333:PHE:HB3	1.89	0.55
1:D:77:HIS:CE1	1:D:79:HIS:HB2	2.41	0.55
1:A:84:GLN:N	1:A:84:GLN:HE21	2.00	0.55
1:B:261:LYS:CB	1:B:263:TYR:HE1	2.19	0.55
1:B:4:ILE:HD11	1:C:203:MET:HE1	1.88	0.55
1:B:248:HIS:CD2	1:B:301:VAL:HA	2.41	0.55
1:A:111:GLU:HG2	1:A:115:GLN:NE2	2.21	0.55
1:A:48:VAL:HB	1:A:72:LEU:CD2	2.36	0.55
1:A:286:ARG:HA	1:A:286:ARG:HE	1.72	0.55
1:C:161:THR:HG22	1:C:163:GLU:HG3	1.88	0.55
1:D:48:VAL:HB	1:D:72:LEU:CD2	2.37	0.55
1:A:257:GLU:CB	1:A:262:LYS:HG2	2.35	0.55
1:D:55:MET:CE	1:D:242:GLY:HA3	2.37	0.55
1:B:175:ILE:CG2	1:B:217:ILE:HG13	2.37	0.54
1:D:82:LEU:O	1:D:82:LEU:HD23	2.08	0.54
1:C:138:PHE:O	1:C:142:VAL:HG23	2.08	0.54
1:A:147:LYS:O	1:A:150:PRO:HD3	2.07	0.54
1:C:10:LEU:HD13	1:C:199:LEU:HD23	1.87	0.54

Continued on next page...

Continued from previous page...

Atom-1	Atom-2	Interatomic distance (Å)	Clash overlap (Å)
1:B:82:LEU:CD2	1:B:86:GLN:CD	2.76	0.54
1:D:55:MET:HE1	1:D:266:PHE:HZ	1.71	0.54
1:C:128:LEU:HD22	1:C:141:PHE:CE2	2.42	0.54
1:B:122:GLN:N	1:B:122:GLN:OE1	2.41	0.54
1:A:43:GLN:HA	1:A:43:GLN:NE2	2.22	0.54
1:C:57:THR:HG22	1:C:253:GLY:N	2.23	0.54
1:D:10:LEU:HD13	1:D:199:LEU:HD23	1.89	0.54
1:A:18:ARG:NH1	1:A:18:ARG:HG3	2.20	0.54
1:C:162:GLY:O	1:C:165:VAL:HB	2.08	0.54
1:B:82:LEU:HD23	1:B:86:GLN:HG3	1.90	0.53
1:C:263:TYR:HB3	1:C:294:GLU:CB	2.36	0.53
1:A:269:MET:HB3	1:A:285:TYR:HD2	1.73	0.53
1:C:175:ILE:CG2	1:C:217:ILE:HG13	2.38	0.53
1:A:16:LEU:HD13	1:C:195:GLY:CA	2.39	0.53
1:B:38:PHE:CE2	1:B:175:ILE:HD11	2.43	0.53
1:C:146:ARG:NH2	1:C:152:HIS:O	2.40	0.53
1:B:55:MET:HE1	1:B:266:PHE:HZ	1.73	0.53
1:A:4:ILE:HD11	1:D:203:MET:HE1	1.90	0.53
1:D:82:LEU:O	1:D:86:GLN:HG3	2.08	0.53
1:A:275:MET:CE	1:A:289:GLU:HG2	2.39	0.53
1:D:73:PHE:CE1	1:D:98:HIS:HA	2.43	0.53
1:D:175:ILE:CG2	1:D:217:ILE:HG13	2.39	0.53
1:D:52:ALA:HB2	1:D:67:LEU:CD1	2.39	0.53
1:B:48:VAL:HB	1:B:72:LEU:CD2	2.38	0.53
1:C:257:GLU:HA	1:C:263:TYR:H	1.74	0.53
1:B:52:ALA:HB2	1:B:67:LEU:CD1	2.39	0.53
1:C:55:MET:HG2	1:C:269:MET:SD	2.49	0.53
1:B:4:ILE:HD11	1:C:203:MET:HE3	1.90	0.52
1:C:73:PHE:CD1	1:C:98:HIS:HA	2.45	0.52
1:C:30:VAL:HB	1:C:313:ARG:HG2	1.91	0.52
1:B:82:LEU:O	1:B:82:LEU:HD23	2.09	0.52
1:C:84:GLN:N	1:C:84:GLN:HE21	2.02	0.52
1:A:82:LEU:HD21	1:A:86:GLN:OE1	2.10	0.52
1:A:57:THR:HG1	1:A:266:PHE:HD1	1.57	0.52
1:D:293:VAL:CG2	1:D:294:GLU:N	2.72	0.52
1:D:318:TYR:N	1:D:318:TYR:CD2	2.76	0.52
1:C:85:TRP:NE1	1:C:116:ILE:HD13	2.25	0.52
1:A:121:PRO:HG2	1:A:122:GLN:NE2	2.24	0.52
1:B:51:ILE:HG12	1:B:73:PHE:HB3	1.91	0.52
1:B:55:MET:CE	1:B:242:GLY:HA3	2.40	0.52
1:B:77:HIS:CE1	1:B:79:HIS:HB2	2.45	0.51

Continued on next page...

Continued from previous page...

Atom-1	Atom-2	Interatomic distance (Å)	Clash overlap (Å)
1:B:73:PHE:CD1	1:B:98:HIS:HA	2.45	0.51
1:D:336:VAL:CG1	1:D:338:GLN:O	2.58	0.51
1:A:52:ALA:HB2	1:A:67:LEU:CD1	2.40	0.51
1:B:82:LEU:HD23	1:B:86:GLN:CG	2.40	0.51
1:A:55:MET:CE	1:A:242:GLY:CA	2.89	0.51
1:D:21:ARG:HH11	1:D:21:ARG:HG3	1.76	0.51
1:B:21:ARG:HG2	1:D:164:MET:HE1	1.92	0.51
1:C:159:VAL:HG11	1:C:164:MET:HG3	1.92	0.51
1:A:57:THR:HG22	1:A:253:GLY:H	1.75	0.51
1:B:259:ASP:O	1:B:261:LYS:HG3	2.10	0.51
1:B:97:GLU:O	1:B:98:HIS:HB2	2.10	0.51
1:B:300:ASP:HB3	1:B:302:GLU:HB3	1.93	0.51
1:C:314:SER:O	1:C:318:TYR:HD1	1.94	0.51
1:B:121:PRO:HG2	1:B:122:GLN:HE22	1.75	0.51
1:A:77:HIS:CE1	1:A:79:HIS:HB2	2.46	0.51
1:A:73:PHE:CE1	1:A:98:HIS:HA	2.46	0.51
1:D:30:VAL:HB	1:D:313:ARG:HG2	1.93	0.51
1:D:247:GLY:HA2	1:D:264:LYS:HD3	1.93	0.50
1:B:57:THR:HG22	1:B:253:GLY:H	1.75	0.50
1:C:97:GLU:O	1:C:98:HIS:HB2	2.11	0.50
1:A:73:PHE:CD1	1:A:98:HIS:HA	2.46	0.50
1:A:111:GLU:HG2	1:A:115:GLN:HE22	1.75	0.50
1:B:228:VAL:HG13	1:B:239:VAL:HG11	1.92	0.50
1:B:162:GLY:O	1:B:166:GLU:HG3	2.12	0.50
1:A:120:ILE:HG22	1:A:123:VAL:HG23	1.93	0.50
1:C:300:ASP:HB3	1:C:302:GLU:HB3	1.92	0.50
1:D:97:GLU:O	1:D:98:HIS:HB2	2.12	0.50
1:A:257:GLU:HA	1:A:262:LYS:HA	1.93	0.49
1:C:18:ARG:NH1	1:C:18:ARG:CG	2.72	0.49
1:B:164:MET:HE1	1:C:21:ARG:HG2	1.89	0.49
1:C:55:MET:CE	1:C:242:GLY:CA	2.90	0.49
1:B:175:ILE:HG22	1:B:217:ILE:HG13	1.94	0.49
1:B:146:ARG:NH2	1:B:152:HIS:O	2.44	0.49
1:A:159:VAL:HG11	1:A:164:MET:HG3	1.94	0.49
1:B:255:LEU:O	1:B:257:GLU:N	2.46	0.49
1:A:51:ILE:HG12	1:A:73:PHE:HB3	1.95	0.49
1:D:85:TRP:HB3	1:D:120:ILE:CD1	2.43	0.49
1:C:57:THR:HA	1:C:252:GLY:HA3	1.94	0.48
1:C:258:ARG:O	1:C:259:ASP:C	2.51	0.48
1:A:175:ILE:HG21	1:A:217:ILE:HG13	1.94	0.48
1:A:254:GLU:HB2	1:A:265:LEU:HD12	1.95	0.48

Continued on next page...

Continued from previous page...

Atom-1	Atom-2	Interatomic distance (Å)	Clash overlap (Å)
1:C:134:TYR:HA	1:C:164:MET:CE	2.43	0.48
1:D:77:HIS:ND1	1:D:79:HIS:HB2	2.28	0.48
1:A:138:PHE:O	1:A:142:VAL:HG23	2.13	0.48
1:A:8:VAL:HG22	1:D:335:ARG:HB3	1.96	0.48
1:B:162:GLY:O	1:B:165:VAL:HB	2.13	0.48
1:C:308:ILE:O	1:C:312:ILE:HG12	2.14	0.48
1:B:83:VAL:O	1:B:86:GLN:HB2	2.14	0.48
1:A:164:MET:CE	1:D:21:ARG:HD3	2.43	0.48
1:C:143:LYS:O	1:C:146:ARG:HB3	2.14	0.48
1:B:131:ALA:HB2	1:B:284:GLU:O	2.14	0.48
1:D:114:GLU:HG2	1:D:148:ARG:NH1	2.22	0.48
1:A:253:GLY:HA3	1:A:265:LEU:O	2.13	0.48
1:D:89:ALA:HA	1:D:96:LEU:HD21	1.96	0.48
1:D:55:MET:CE	1:D:242:GLY:CA	2.92	0.47
1:B:55:MET:SD	3:B:500:5GP:H8	2.54	0.47
1:A:331:THR:HB	1:C:2:PRO:HB3	1.95	0.47
1:B:89:ALA:HB2	1:B:120:ILE:HD13	1.96	0.47
1:D:15:VAL:HG22	1:D:333:PHE:HB3	1.96	0.47
1:D:161:THR:HG22	1:D:163:GLU:HG3	1.95	0.47
1:A:148:ARG:HD3	1:A:149:PHE:CE1	2.48	0.47
1:D:229:ALA:HB1	1:D:315:THR:HG21	1.97	0.47
1:C:183:GLY:HA3	1:C:186:CYS:CB	2.41	0.47
1:B:258:ARG:O	1:B:261:LYS:HB2	2.13	0.47
1:B:267:TYR:CG	1:B:273:MET:HE3	2.50	0.47
1:A:17:LEU:HB2	1:C:194:VAL:HG22	1.96	0.47
1:B:82:LEU:HD23	1:B:86:GLN:CD	2.35	0.47
1:C:112:GLN:O	1:C:116:ILE:HG13	2.15	0.47
1:C:147:LYS:O	1:C:150:PRO:HD3	2.14	0.47
1:B:77:HIS:ND1	1:B:79:HIS:HB2	2.30	0.47
1:B:54:ASN:HA	1:B:75:ALA:O	2.15	0.47
1:D:21:ARG:CG	1:D:21:ARG:HH11	2.28	0.47
1:A:18:ARG:CG	1:A:18:ARG:NH1	2.78	0.47
1:C:43:GLN:NE2	1:C:43:GLN:CA	2.77	0.47
1:A:1:MET:HA	1:A:1:MET:CE	2.46	0.46
1:A:275:MET:HE3	1:A:289:GLU:HG2	1.98	0.46
1:B:18:ARG:NH1	1:B:18:ARG:CG	2.78	0.46
1:C:250:GLU:OE1	1:C:301:VAL:HG23	2.15	0.46
1:A:269:MET:HB3	1:A:285:TYR:CD2	2.50	0.46
1:B:189:ARG:HD3	1:C:16:LEU:HD11	1.96	0.46
1:B:74:THR:HB	1:B:99:LEU:HD12	1.96	0.46
1:C:161:THR:CB	1:C:163:GLU:OE1	2.63	0.46

Continued on next page...

Continued from previous page...

Atom-1	Atom-2	Interatomic distance (Å)	Clash overlap (Å)
1:C:248:HIS:O	1:C:251:SER:HB3	2.16	0.46
1:A:17:LEU:O	1:C:194:VAL:HG13	2.16	0.46
1:D:112:GLN:O	1:D:116:ILE:HG13	2.16	0.46
1:C:51:ILE:HG12	1:C:73:PHE:HB3	1.97	0.46
1:D:73:PHE:CD1	1:D:98:HIS:HA	2.52	0.45
1:C:74:THR:HB	1:C:99:LEU:HD12	1.98	0.45
1:D:54:ASN:HA	1:D:75:ALA:O	2.16	0.45
1:C:263:TYR:CB	1:C:294:GLU:HB3	2.43	0.45
1:A:54:ASN:HA	1:A:75:ALA:O	2.16	0.45
1:A:146:ARG:NH2	1:A:152:HIS:O	2.49	0.45
1:C:54:ASN:HA	1:C:75:ALA:O	2.15	0.45
1:B:122:GLN:N	1:B:122:GLN:CD	2.69	0.45
1:C:229:ALA:HB1	1:C:315:THR:HG21	1.98	0.45
1:B:27:ARG:O	1:B:313:ARG:HD2	2.16	0.45
1:A:120:ILE:HD12	1:A:120:ILE:N	2.32	0.45
1:D:55:MET:HE1	1:D:266:PHE:CZ	2.52	0.45
1:D:134:TYR:CB	1:D:164:MET:HE3	2.47	0.45
1:A:302:GLU:OE1	1:A:306:ARG:NH2	2.50	0.45
1:C:134:TYR:HA	1:C:164:MET:HE3	1.98	0.45
1:A:77:HIS:ND1	1:A:79:HIS:HB2	2.32	0.45
1:D:316:CYS:HB3	1:D:321:ALA:O	2.17	0.45
1:D:175:ILE:HG21	1:D:217:ILE:HG13	1.97	0.45
1:D:70:PHE:O	1:D:71:SER:CB	2.63	0.45
1:C:331:THR:HA	4:C:2403:HOH:O	2.16	0.45
1:D:263:TYR:HA	1:D:296:PRO:HA	1.99	0.45
1:A:269:MET:HE2	1:A:285:TYR:CE2	2.51	0.45
1:A:70:PHE:O	1:A:71:SER:CB	2.65	0.44
1:C:261:LYS:O	1:C:263:TYR:CD1	2.71	0.44
1:C:175:ILE:HG22	1:C:217:ILE:HG13	1.98	0.44
1:A:183:GLY:HA3	1:A:186:CYS:CB	2.45	0.44
1:A:316:CYS:HB3	1:A:321:ALA:O	2.17	0.44
1:D:300:ASP:HB3	1:D:302:GLU:HB3	2.00	0.44
1:C:175:ILE:HG21	1:C:217:ILE:HG13	1.99	0.44
1:D:250:GLU:OE1	1:D:301:VAL:HG23	2.17	0.44
1:D:248:HIS:H	1:D:251:SER:HB2	1.82	0.44
1:B:229:ALA:HB1	1:B:315:THR:HG21	1.99	0.44
1:A:162:GLY:O	1:A:165:VAL:HB	2.16	0.44
1:C:163:GLU:HG3	1:C:163:GLU:H	1.53	0.44
1:A:175:ILE:HG22	1:A:217:ILE:HG13	2.00	0.44
1:B:129:ASP:OD1	1:B:286:ARG:NH1	2.51	0.44
1:A:18:ARG:HB2	1:A:334:ILE:HD11	1.99	0.44

Continued on next page...

Continued from previous page...

Atom-1	Atom-2	Interatomic distance (Å)	Clash overlap (Å)
1:A:1:MET:HB3	1:A:2:PRO:HA	2.00	0.44
1:B:18:ARG:CB	1:B:334:ILE:HD13	2.44	0.44
1:B:55:MET:HE2	1:B:242:GLY:HA3	1.99	0.44
1:B:194:VAL:HG13	1:C:17:LEU:O	2.18	0.44
1:D:18:ARG:NH1	1:D:18:ARG:CG	2.76	0.43
1:A:203:MET:HE1	1:C:4:ILE:HD11	2.00	0.43
1:C:248:HIS:H	1:C:251:SER:CB	2.31	0.43
1:B:55:MET:CE	1:B:242:GLY:CA	2.95	0.43
1:A:96:LEU:CD1	1:A:122:GLN:HB2	2.48	0.43
1:B:164:MET:HE2	1:C:21:ARG:CG	2.29	0.43
1:B:161:THR:HG22	1:B:163:GLU:HG3	2.00	0.43
1:C:248:HIS:H	1:C:251:SER:HB2	1.83	0.43
1:C:158:ASN:OD1	1:C:177:LYS:NZ	2.52	0.43
1:A:55:MET:HE1	1:A:242:GLY:HA3	1.98	0.43
1:A:308:ILE:O	1:A:312:ILE:HG12	2.18	0.43
1:D:248:HIS:H	1:D:251:SER:CB	2.31	0.43
1:A:254:GLU:HB3	1:A:265:LEU:HG	2.01	0.43
1:D:81:SER:CB	1:D:84:GLN:NE2	2.72	0.43
1:B:300:ASP:HB2	1:B:303:HIS:CE1	2.54	0.43
1:A:256:ILE:H	1:A:256:ILE:HG13	1.66	0.43
1:B:85:TRP:NE1	1:B:116:ILE:HD13	2.33	0.43
1:B:248:HIS:H	1:B:251:SER:HB2	1.84	0.43
1:C:77:HIS:CE1	1:C:79:HIS:HB2	2.53	0.43
1:D:266:PHE:N	1:D:293:VAL:O	2.49	0.43
1:B:191:LYS:O	1:C:225:PRO:HB2	2.19	0.43
1:D:335:ARG:NH1	1:D:335:ARG:CG	2.78	0.42
1:A:158:ASN:OD1	1:A:177:LYS:NZ	2.51	0.42
1:D:308:ILE:O	1:D:312:ILE:HG12	2.19	0.42
1:B:118:GLU:OE2	1:B:118:GLU:HA	2.19	0.42
1:C:81:SER:CB	1:C:84:GLN:NE2	2.73	0.42
1:C:78:LYS:O	1:C:78:LYS:HG3	2.19	0.42
1:C:316:CYS:HB3	1:C:321:ALA:O	2.18	0.42
1:B:335:ARG:HB3	1:B:335:ARG:HE	1.59	0.42
1:A:258:ARG:NH2	1:A:294:GLU:OE1	2.52	0.42
1:D:55:MET:HE2	1:D:242:GLY:HA3	2.01	0.42
1:A:74:THR:HB	1:A:99:LEU:HD12	2.01	0.42
1:B:316:CYS:HB3	1:B:321:ALA:O	2.19	0.42
1:C:259:ASP:C	1:C:261:LYS:H	2.21	0.42
1:C:263:TYR:HB3	1:C:294:GLU:CG	2.50	0.42
1:A:38:PHE:CE2	1:A:175:ILE:HD11	2.55	0.42
1:C:1:MET:HA	1:C:2:PRO:C	2.39	0.42

Continued on next page...

Continued from previous page...

Atom-1	Atom-2	Interatomic distance (Å)	Clash overlap (Å)
1:A:163:GLU:H	1:A:163:GLU:HG3	1.50	0.42
1:B:269:MET:HE2	1:B:286:ARG:HD2	2.00	0.42
1:C:15:VAL:HG22	1:C:333:PHE:HB3	2.01	0.42
1:B:248:HIS:H	1:B:251:SER:CB	2.32	0.42
1:D:162:GLY:O	1:D:165:VAL:HB	2.20	0.42
1:A:300:ASP:HB3	1:A:302:GLU:HB3	2.01	0.42
1:C:219:ASP:OD1	1:C:240:MET:SD	2.77	0.42
1:D:180:ILE:O	1:D:182:PRO:HD3	2.20	0.42
1:D:122:GLN:CD	1:D:122:GLN:N	2.74	0.42
1:A:119:ALA:HB3	1:A:120:ILE:HD12	2.00	0.42
1:B:159:VAL:HG11	1:B:164:MET:HG3	2.02	0.42
1:B:269:MET:CE	1:B:286:ARG:HD2	2.50	0.41
1:C:183:GLY:C	1:C:186:CYS:HB3	2.40	0.41
1:B:112:GLN:O	1:B:116:ILE:HG13	2.20	0.41
1:A:55:MET:HE2	1:A:242:GLY:HA3	2.00	0.41
1:B:45:TYR:CG	1:B:46:SER:N	2.88	0.41
1:B:286:ARG:HE	1:B:286:ARG:CA	2.22	0.41
1:A:43:GLN:CA	1:A:43:GLN:NE2	2.81	0.41
1:A:10:LEU:H	1:A:10:LEU:HD12	1.85	0.41
1:C:55:MET:SD	3:C:500:5GP:H8	2.60	0.41
1:C:77:HIS:ND1	1:C:79:HIS:HB2	2.34	0.41
1:B:34:ARG:O	1:B:46:SER:HA	2.21	0.41
1:A:82:LEU:CD2	1:A:86:GLN:OE1	2.68	0.41
1:D:248:HIS:O	1:D:251:SER:HB3	2.20	0.41
1:C:96:LEU:CB	1:C:122:GLN:HB3	2.50	0.41
1:A:180:ILE:O	1:A:182:PRO:HD3	2.21	0.41
1:B:267:TYR:CD2	1:B:273:MET:HE3	2.55	0.41
1:D:175:ILE:HG22	1:D:217:ILE:HG13	2.02	0.41
1:B:254:GLU:C	1:B:256:ILE:H	2.22	0.41
1:C:57:THR:O	1:C:252:GLY:N	2.41	0.41
1:D:146:ARG:NH2	1:D:152:HIS:O	2.46	0.41
1:B:70:PHE:O	1:B:71:SER:CB	2.65	0.41
1:D:34:ARG:O	1:D:46:SER:HA	2.20	0.41
1:A:16:LEU:CD2	1:C:189:ARG:HG2	2.51	0.41
1:A:267:TYR:CD2	1:A:273:MET:HE3	2.56	0.41
1:A:15:VAL:HG22	1:A:333:PHE:HB3	2.03	0.41
1:C:1:MET:HB3	1:C:2:PRO:HA	2.03	0.41
1:A:271:SER:HA	1:A:290:GLY:O	2.20	0.41
1:D:185:VAL:CB	1:D:267:TYR:O	2.69	0.41
1:A:81:SER:CB	1:A:84:GLN:NE2	2.71	0.41
1:B:267:TYR:CD2	1:B:273:MET:CE	3.04	0.41

Continued on next page...

Continued from previous page...

Atom-1	Atom-2	Interatomic distance (Å)	Clash overlap (Å)
1:C:134:TYR:CD2	1:C:164:MET:HE3	2.56	0.41
1:A:332:THR:OG1	1:C:1:MET:CE	2.69	0.41
1:B:267:TYR:CD2	1:B:267:TYR:N	2.89	0.40
1:C:55:MET:HE1	1:C:242:GLY:HA3	2.03	0.40
1:B:246:ALA:HB2	1:B:266:PHE:CE1	2.55	0.40
1:D:220:GLY:HA2	2:D:3500:SO4:O3	2.21	0.40
1:B:175:ILE:HG21	1:B:217:ILE:HG13	2.02	0.40
1:B:248:HIS:O	1:B:251:SER:HB3	2.22	0.40
1:C:34:ARG:O	1:C:46:SER:HA	2.22	0.40
1:D:232:PHE:HB3	1:D:327:LEU:HD23	2.03	0.40
1:C:198:GLN:OE1	1:C:198:GLN:HA	2.20	0.40
1:A:161:THR:HG22	1:A:163:GLU:HG3	2.03	0.40
1:C:38:PHE:CE2	1:C:175:ILE:HD11	2.55	0.40
1:C:70:PHE:O	1:C:71:SER:CB	2.68	0.40
1:D:74:THR:HB	1:D:99:LEU:HD12	2.01	0.40
1:B:308:ILE:O	1:B:312:ILE:HG12	2.20	0.40
1:A:134:TYR:CB	1:A:164:MET:HE3	2.51	0.40
1:B:18:ARG:HB2	1:B:334:ILE:HD11	1.98	0.40
1:A:10:LEU:O	1:A:199:LEU:HB3	2.20	0.40
1:C:10:LEU:H	1:C:10:LEU:HD12	1.87	0.40
1:D:85:TRP:HB3	1:D:120:ILE:HD11	2.02	0.40
1:A:55:MET:SD	3:A:500:5GP:H8	2.61	0.40
1:C:206:ALA:HB2	1:C:216:ILE:HD11	2.03	0.40

All (1) symmetry-related close contacts are listed below. The label for Atom-2 includes the symmetry operator and encoded unit-cell translations to be applied.

Atom-1	Atom-2	Interatomic distance (Å)	Clash overlap (Å)
1:B:300:ASP:OD1	1:B:300:ASP:OD1[5_555]	1.78	0.42

5.3 Torsion angles ⓘ

5.3.1 Protein backbone ⓘ

In the following table, the Percentiles column shows the percent Ramachandran outliers of the chain as a percentile score with respect to all X-ray entries followed by that with respect to entries of similar resolution.

The Analysed column shows the number of residues for which the backbone conformation was analysed, and the total number of residues.

Mol	Chain	Analysed	Favoured	Allowed	Outliers	Percentiles	
1	A	336/366 (92%)	304 (90%)	29 (9%)	3 (1%)	21	64
1	B	333/366 (91%)	297 (89%)	33 (10%)	3 (1%)	21	64
1	C	323/366 (88%)	289 (90%)	29 (9%)	5 (2%)	13	50
1	D	313/366 (86%)	284 (91%)	25 (8%)	4 (1%)	15	53
All	All	1305/1464 (89%)	1174 (90%)	116 (9%)	15 (1%)	17	58

All (15) Ramachandran outliers are listed below:

Mol	Chain	Res	Type
1	A	25	LYS
1	B	25	LYS
1	B	256	ILE
1	C	25	LYS
1	C	259	ASP
1	D	25	LYS
1	A	282	VAL
1	B	255	LEU
1	C	255	LEU
1	D	259	ASP
1	A	287	ALA
1	C	271	SER
1	C	256	ILE
1	D	121	PRO
1	D	253	GLY

5.3.2 Protein sidechains ⓘ

In the following table, the Percentiles column shows the percent sidechain outliers of the chain as a percentile score with respect to all X-ray entries followed by that with respect to entries of similar resolution.

The Analysed column shows the number of residues for which the sidechain conformation was analysed, and the total number of residues.

Mol	Chain	Analysed	Rotameric	Outliers	Percentiles	
1	A	233/300 (78%)	218 (94%)	15 (6%)	22	59
1	B	233/300 (78%)	217 (93%)	16 (7%)	19	56
1	C	221/300 (74%)	204 (92%)	17 (8%)	16	50
1	D	220/300 (73%)	203 (92%)	17 (8%)	16	50
All	All	907/1200 (76%)	842 (93%)	65 (7%)	18	53

All (65) residues with a non-rotameric sidechain are listed below:

Mol	Chain	Res	Type
1	A	10	LEU
1	A	11	ASP
1	A	15	VAL
1	A	17	LEU
1	A	18	ARG
1	A	43	GLN
1	A	84	GLN
1	A	94	ASP
1	A	136	GLU
1	A	148	ARG
1	A	163	GLU
1	A	175	ILE
1	A	177	LYS
1	A	207	ASP
1	A	258	ARG
1	B	10	LEU
1	B	11	ASP
1	B	15	VAL
1	B	17	LEU
1	B	18	ARG
1	B	21	ARG
1	B	43	GLN
1	B	84	GLN
1	B	94	ASP
1	B	140	GLU
1	B	148	ARG
1	B	163	GLU
1	B	177	LYS
1	B	198	GLN
1	B	207	ASP
1	B	323	LYS
1	C	10	LEU
1	C	11	ASP
1	C	15	VAL
1	C	17	LEU
1	C	18	ARG
1	C	43	GLN
1	C	84	GLN
1	C	94	ASP
1	C	148	ARG
1	C	163	GLU
1	C	175	ILE

Continued on next page...

Continued from previous page...

Mol	Chain	Res	Type
1	C	177	LYS
1	C	198	GLN
1	C	207	ASP
1	C	259	ASP
1	C	267	TYR
1	C	334	ILE
1	D	10	LEU
1	D	11	ASP
1	D	15	VAL
1	D	17	LEU
1	D	18	ARG
1	D	21	ARG
1	D	43	GLN
1	D	84	GLN
1	D	94	ASP
1	D	148	ARG
1	D	163	GLU
1	D	177	LYS
1	D	198	GLN
1	D	207	ASP
1	D	293	VAL
1	D	294	GLU
1	D	335	ARG

Some sidechains can be flipped to improve hydrogen bonding and reduce clashes. All (17) such sidechains are listed below:

Mol	Chain	Res	Type
1	A	6	ASN
1	A	43	GLN
1	A	84	GLN
1	A	115	GLN
1	A	215	HIS
1	B	6	ASN
1	B	43	GLN
1	B	84	GLN
1	B	215	HIS
1	C	6	ASN
1	C	43	GLN
1	C	84	GLN
1	C	215	HIS
1	D	6	ASN
1	D	43	GLN

Continued on next page...

Continued from previous page...

Mol	Chain	Res	Type
1	D	84	GLN
1	D	215	HIS

5.3.3 RNA ⓘ

There are no RNA molecules in this entry.

5.4 Non-standard residues in protein, DNA, RNA chains ⓘ

There are no non-standard protein/DNA/RNA residues in this entry.

5.5 Carbohydrates ⓘ

There are no carbohydrates in this entry.

5.6 Ligand geometry ⓘ

11 ligands are modelled in this entry.

In the following table, the Counts columns list the number of bonds (or angles) for which Mogul statistics could be retrieved, the number of bonds (or angles) that are observed in the model and the number of bonds (or angles) that are defined in the chemical component dictionary. The Link column lists molecule types, if any, to which the group is linked. The Z score for a bond length (or angle) is the number of standard deviations the observed value is removed from the expected value. A bond length (or angle) with $|Z| > 2$ is considered an outlier worth inspection. RMSZ is the root-mean-square of all Z scores of the bond lengths (or angles).

Mol	Type	Chain	Res	Link	Bond lengths			Bond angles		
					Counts	RMSZ	$\# Z > 2$	Counts	RMSZ	$\# Z > 2$
2	SO4	A	400	-	4,4,4	0.41	0	6,6,6	0.15	0
2	SO4	A	401	-	4,4,4	0.24	0	6,6,6	0.14	0
3	5GP	A	500	1	21,26,26	1.41	3 (14%)	25,40,40	1.89	6 (24%)
2	SO4	B	1400	-	4,4,4	0.29	0	6,6,6	0.13	0
2	SO4	B	1401	-	4,4,4	0.20	0	6,6,6	0.14	0
3	5GP	B	500	1	21,26,26	1.42	3 (14%)	25,40,40	1.87	7 (28%)
2	SO4	C	2400	-	4,4,4	0.28	0	6,6,6	0.07	0
2	SO4	C	2401	-	4,4,4	0.21	0	6,6,6	0.18	0
3	5GP	C	500	1	21,26,26	1.42	3 (14%)	25,40,40	1.89	7 (28%)
2	SO4	D	3400	-	4,4,4	0.25	0	6,6,6	0.14	0
2	SO4	D	3500	-	4,4,4	0.19	0	6,6,6	0.18	0

In the following table, the Chirals column lists the number of chiral outliers, the number of chiral centers analysed, the number of these observed in the model and the number defined in the chemical component dictionary. Similar counts are reported in the Torsion and Rings columns. '-' means no outliers of that kind were identified.

Mol	Type	Chain	Res	Link	Chirals	Torsions	Rings
2	SO4	A	400	-	-	0/0/0/0	0/0/0/0
2	SO4	A	401	-	-	0/0/0/0	0/0/0/0
3	5GP	A	500	1	-	0/6/26/26	0/3/3/3
2	SO4	B	1400	-	-	0/0/0/0	0/0/0/0
2	SO4	B	1401	-	-	0/0/0/0	0/0/0/0
3	5GP	B	500	1	-	0/6/26/26	0/3/3/3
2	SO4	C	2400	-	-	0/0/0/0	0/0/0/0
2	SO4	C	2401	-	-	0/0/0/0	0/0/0/0
3	5GP	C	500	1	-	0/6/26/26	0/3/3/3
2	SO4	D	3400	-	-	0/0/0/0	0/0/0/0
2	SO4	D	3500	-	-	0/0/0/0	0/0/0/0

All (9) bond length outliers are listed below:

Mol	Chain	Res	Type	Atoms	Z	Observed(Å)	Ideal(Å)
3	A	500	5GP	O4'-C1'	2.52	1.44	1.41
3	C	500	5GP	O4'-C1'	2.55	1.44	1.41
3	B	500	5GP	O4'-C1'	2.70	1.44	1.41
3	A	500	5GP	C2-N1	2.82	1.40	1.35
3	C	500	5GP	C2-N1	2.86	1.40	1.35
3	B	500	5GP	C2-N1	2.88	1.40	1.35
3	B	500	5GP	C6-N1	4.01	1.40	1.33
3	C	500	5GP	C6-N1	4.07	1.40	1.33
3	A	500	5GP	C6-N1	4.11	1.40	1.33

All (20) bond angle outliers are listed below:

Mol	Chain	Res	Type	Atoms	Z	Observed(°)	Ideal(°)
3	B	500	5GP	N3-C2-N1	-4.84	120.07	127.44
3	C	500	5GP	N3-C2-N1	-4.72	120.25	127.44
3	A	500	5GP	N3-C2-N1	-4.65	120.37	127.44
3	A	500	5GP	C4'-O4'-C1'	-4.27	105.02	109.72
3	C	500	5GP	C4'-O4'-C1'	-4.26	105.04	109.72
3	A	500	5GP	C5-C6-N1	-3.73	118.48	123.59
3	C	500	5GP	C5-C6-N1	-3.54	118.74	123.59
3	B	500	5GP	C5-C6-N1	-3.45	118.87	123.59
3	B	500	5GP	C4'-O4'-C1'	-3.27	106.13	109.72
3	B	500	5GP	C4-C5-N7	-2.37	107.30	109.48

Continued on next page...

Continued from previous page...

Mol	Chain	Res	Type	Atoms	Z	Observed(°)	Ideal(°)
3	C	500	5GP	C4-C5-N7	-2.26	107.40	109.48
3	A	500	5GP	C4-C5-N7	-2.21	107.45	109.48
3	B	500	5GP	C2'-C3'-C4'	-2.16	98.17	102.61
3	C	500	5GP	C2'-C3'-C4'	-2.12	98.26	102.61
3	C	500	5GP	C6-N1-C2	2.36	119.22	115.94
3	B	500	5GP	C6-N1-C2	2.44	119.32	115.94
3	A	500	5GP	C6-N1-C2	2.47	119.37	115.94
3	C	500	5GP	O5'-P-O1P	2.64	113.86	107.14
3	B	500	5GP	O5'-P-O1P	2.67	113.95	107.14
3	A	500	5GP	O5'-P-O1P	2.73	114.09	107.14

There are no chirality outliers.

There are no torsion outliers.

There are no ring outliers.

4 monomers are involved in 4 short contacts:

Mol	Chain	Res	Type	Clashes	Symm-Clashes
3	A	500	5GP	1	0
3	B	500	5GP	1	0
3	C	500	5GP	1	0
2	D	3500	SO4	1	0

5.7 Other polymers [i](#)

There are no such residues in this entry.

5.8 Polymer linkage issues [i](#)

There are no chain breaks in this entry.

6 Fit of model and data ⓘ

6.1 Protein, DNA and RNA chains ⓘ

In the following table, the column labelled ‘#RSRZ> 2’ contains the number (and percentage) of RSRZ outliers, followed by percent RSRZ outliers for the chain as percentile scores relative to all X-ray entries and entries of similar resolution. The OWAB column contains the minimum, median, 95th percentile and maximum values of the occupancy-weighted average B-factor per residue. The column labelled ‘Q< 0.9’ lists the number of (and percentage) of residues with an average occupancy less than 0.9.

Mol	Chain	Analysed	<RSRZ>	#RSRZ>2	OWAB(Å ²)	Q<0.9
1	A	338/366 (92%)	-0.17	1 (0%) 94 84	24, 48, 83, 100	0
1	B	337/366 (92%)	-0.07	9 (2%) 58 28	24, 48, 98, 105	0
1	C	327/366 (89%)	-0.01	6 (1%) 71 43	27, 50, 91, 104	0
1	D	317/366 (86%)	-0.18	1 (0%) 94 84	26, 48, 75, 102	0
All	All	1319/1464 (90%)	-0.11	17 (1%) 79 53	24, 48, 89, 105	0

All (17) RSRZ outliers are listed below:

Mol	Chain	Res	Type	RSRZ
1	C	271	SER	5.0
1	B	280	GLY	4.8
1	B	253	GLY	4.1
1	B	283	ALA	3.5
1	B	284	GLU	2.9
1	D	185	VAL	2.8
1	B	279	ALA	2.7
1	C	254	GLU	2.6
1	C	257	GLU	2.5
1	C	321	ALA	2.4
1	B	271	SER	2.4
1	C	253	GLY	2.3
1	C	47	GLY	2.2
1	A	279	ALA	2.1
1	B	273	MET	2.1
1	B	288	SER	2.1
1	B	1	MET	2.0

6.2 Non-standard residues in protein, DNA, RNA chains ⓘ

There are no non-standard protein/DNA/RNA residues in this entry.

6.3 Carbohydrates [i](#)

There are no carbohydrates in this entry.

6.4 Ligands [i](#)

In the following table, the Atoms column lists the number of modelled atoms in the group and the number defined in the chemical component dictionary. LLDF column lists the quality of electron density of the group with respect to its neighbouring residues in protein, DNA or RNA chains. The B-factors column lists the minimum, median, 95th percentile and maximum values of B factors of atoms in the group. The column labelled 'Q< 0.9' lists the number of atoms with occupancy less than 0.9.

Mol	Type	Chain	Res	Atoms	RSCC	RSR	LLDF	B-factors(\AA^2)	Q<0.9
3	5GP	A	500	24/24	0.87	0.23	0.32	77,82,84,86	0
3	5GP	C	500	24/24	0.86	0.26	0.08	86,92,93,94	0
3	5GP	B	500	24/24	0.92	0.21	-0.41	58,80,85,87	0
2	SO4	D	3500	5/5	0.96	0.16	-0.78	65,68,69,70	0
2	SO4	A	400	5/5	0.94	0.26	-	58,60,62,64	0
2	SO4	D	3400	5/5	0.96	0.11	-	87,90,91,92	0
2	SO4	C	2400	5/5	0.90	0.26	-	97,97,98,98	0
2	SO4	B	1400	5/5	0.93	0.15	-	73,73,74,75	0
2	SO4	C	2401	5/5	0.89	0.35	-	93,94,95,96	0
2	SO4	B	1401	5/5	0.95	0.13	-	104,104,104,105	0
2	SO4	A	401	5/5	0.97	0.19	-	69,70,71,72	0

6.5 Other polymers [i](#)

There are no such residues in this entry.