



Full wwPDB X-ray Structure Validation Report ⓘ

Feb 19, 2016 – 10:21 PM GMT

PDB ID : 5AC1
Title : Sheep aldehyde dehydrogenase 1A1 with duocarmycin analog inhibitor
Authors : Koch, M.F.; Harteis, S.; Blank, I.D.; Pestel, G.; Tietze, L.F.; Ochsenfeld, C.;
Schneider, S.; Sieber, S.A.
Deposited on : 2015-08-11
Resolution : 2.08 Å(reported)

This is a Full wwPDB X-ray Structure Validation Report for a publicly released PDB entry.
We welcome your comments at validation@mail.wwpdb.org
A user guide is available at
<http://wwpdb.org/validation/2016/XrayValidationReportHelp>
with specific help available everywhere you see the ⓘ symbol.

The following versions of software and data (see [references ⓘ](#)) were used in the production of this report:

MolProbity : 4.02b-467
Mogul : 1.7.1 (RC1), CSD as537be (2016)
Xtriage (Phenix) : 1.9-1692
EDS : rb-20026982
Percentile statistics : 20151230.v01 (using entries in the PDB archive December 30th 2015)
Refmac : 5.8.0135
CCP4 : 6.5.0
Ideal geometry (proteins) : Engh & Huber (2001)
Ideal geometry (DNA, RNA) : Parkinson et al. (1996)
Validation Pipeline (wwPDB-VP) : rb-20026982

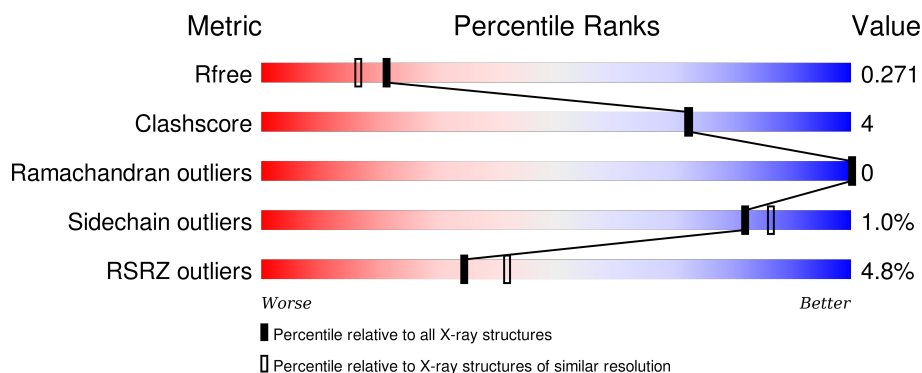
1 Overall quality at a glance

The following experimental techniques were used to determine the structure:

X-RAY DIFFRACTION

The reported resolution of this entry is 2.08 Å.

Percentile scores (ranging between 0-100) for global validation metrics of the entry are shown in the following graphic. The table shows the number of entries on which the scores are based.



Metric	Whole archive (#Entries)	Similar resolution (#Entries, resolution range(Å))
R_{free}	91344	4546 (2.10-2.06)
Clashscore	102246	5101 (2.10-2.06)
Ramachandran outliers	100387	5048 (2.10-2.06)
Sidechain outliers	100360	5049 (2.10-2.06)
RSRZ outliers	91569	4556 (2.10-2.06)

The table below summarises the geometric issues observed across the polymeric chains and their fit to the electron density. The red, orange, yellow and green segments on the lower bar indicate the fraction of residues that contain outliers for ≥ 3 , 2, 1 and 0 types of geometric quality criteria. A grey segment represents the fraction of residues that are not modelled. The numeric value for each fraction is indicated below the corresponding segment, with a dot representing fractions $\leq 5\%$. The upper red bar (where present) indicates the fraction of residues that have poor fit to the electron density. The numeric value is given above the bar.

Mol	Chain	Length	Quality of chain
1	A	501	<div> <div>5%</div> <div>93%</div> <div>5% ..</div> </div>
1	B	501	<div> <div>5%</div> <div>92%</div> <div>6% .</div> </div>
1	C	501	<div> <div>3%</div> <div>92%</div> <div>6% .</div> </div>
1	D	501	<div> <div>6%</div> <div>92%</div> <div>5% ..</div> </div>

The following table lists non-polymeric compounds, carbohydrate monomers and non-standard

residues in protein, DNA, RNA chains that are outliers for geometric or electron-density-fit criteria:

Mol	Type	Chain	Res	Chirality	Geometry	Clashes	Electron density
2	K9P	A	501	-	-	X	X
2	K9P	D	501	-	-	X	-
3	TXE	A	550	X	-	-	-
3	TXE	B	550	X	-	-	-
3	TXE	C	550	X	-	-	-
3	TXE	D	550	X	-	-	-

2 Entry composition [i](#)

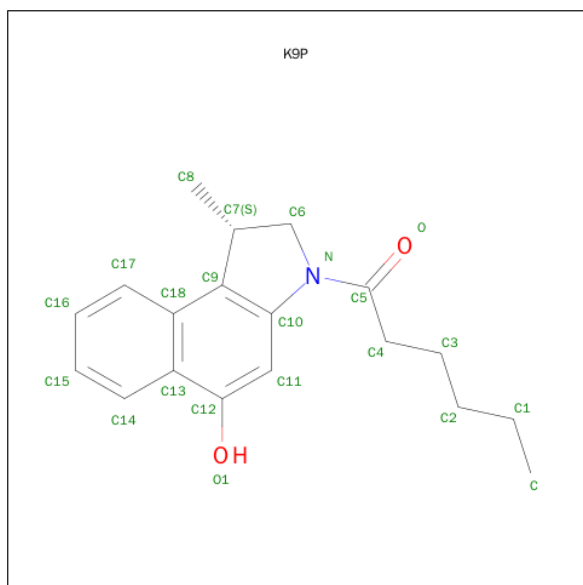
There are 5 unique types of molecules in this entry. The entry contains 16433 atoms, of which 0 are hydrogens and 0 are deuteriums.

In the tables below, the ZeroOcc column contains the number of atoms modelled with zero occupancy, the AltConf column contains the number of residues with at least one atom in alternate conformation and the Trace column contains the number of residues modelled with at most 2 atoms.

- Molecule 1 is a protein called RETINAL DEHYDROGENASE 1.

Mol	Chain	Residues	Atoms					ZeroOcc	AltConf	Trace
1	A	494	Total	C	N	O	S	0	6	0
			3847	2450	647	726	24			
1	B	494	Total	C	N	O	S	0	11	0
			3882	2476	648	733	25			
1	C	494	Total	C	N	O	S	0	5	0
			3846	2449	647	727	23			
1	D	494	Total	C	N	O	S	0	7	0
			3860	2460	651	725	24			

- Molecule 2 is 1-[(1S)-1-METHYL-5-OXIDANYL-1,2-DIHYDROBENZO[E]INDOL-3-YL]H EXAN-1-ONE (three-letter code: K9P) (formula: $C_{19}H_{23}NO_2$).



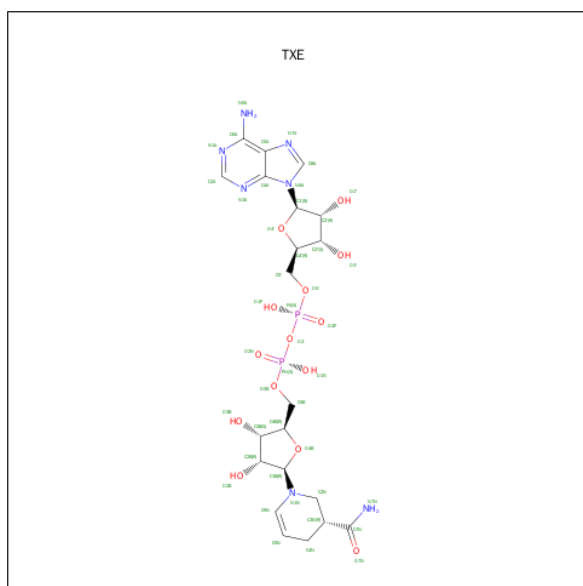
Mol	Chain	Residues	Atoms				ZeroOcc	AltConf
2	A	1	Total	C	N	O	0	0
			22	19	1	2		
2	B	1	Total	C	N	O	0	0
			22	19	1	2		

Continued on next page...

Continued from previous page...

Mol	Chain	Residues	Atoms				ZeroOcc	AltConf
2	C	1	Total	C	N	O	0	0
			22	19	1	2		
2	D	1	Total	C	N	O	0	0
			22	19	1	2		

- Molecule 3 is [[(2R,3S,4R,5R)-5-[(3R)-3-AMINOCARBONYL-3,4-DIHYDRO-2H-PYRIDIN-1-YL]-3,4-BIS(OXIDANYL)OXOLAN-2-YL]METHOXY-OXIDANIDYL-PHOSPHORYL] [(2R,3S,4R,5R)-5-(6-AMINOPURIN-9-YL)-3,4-BIS(OXIDANYL)OXOLAN-2-YL]METHYL PHOSPHATE (three-letter code: TXE) (formula: C₂₁H₃₁N₇O₁₄P₂).



Mol	Chain	Residues	Atoms					ZeroOcc	AltConf
3	A	1	Total	C	N	O	P	0	0
			44	21	7	14	2		
3	B	1	Total	C	N	O	P	0	0
			44	21	7	14	2		
3	C	1	Total	C	N	O	P	0	0
			44	21	7	14	2		
3	D	1	Total	C	N	O	P	0	0
			44	21	7	14	2		

- Molecule 4 is MAGNESIUM ION (three-letter code: MG) (formula: Mg).

Mol	Chain	Residues	Atoms		ZeroOcc	AltConf
4	B	1	Total	Mg	0	0
			1	1		
4	A	1	Total	Mg	0	0
			1	1		

Continued on next page...

Continued from previous page...

Mol	Chain	Residues	Atoms		ZeroOcc	AltConf
4	D	1	Total 1	Mg 1	0	0
4	C	1	Total 1	Mg 1	0	0

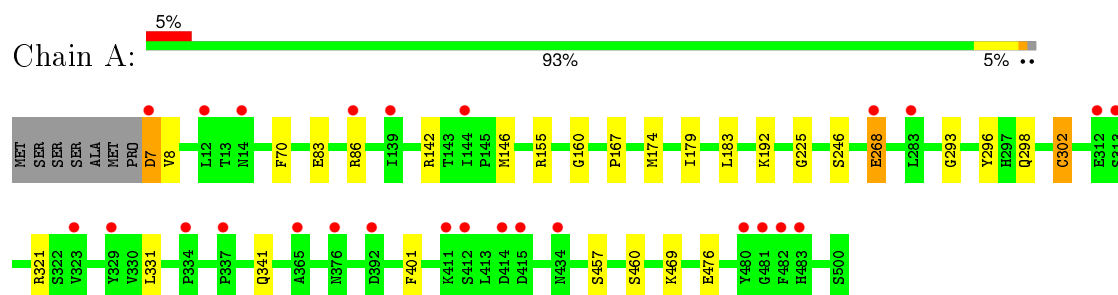
- Molecule 5 is water.

Mol	Chain	Residues	Atoms		ZeroOcc	AltConf
5	A	213	Total 213	O 213	0	0
5	B	187	Total 191	O 191	0	4
5	C	170	Total 172	O 172	0	2
5	D	153	Total 154	O 154	0	1

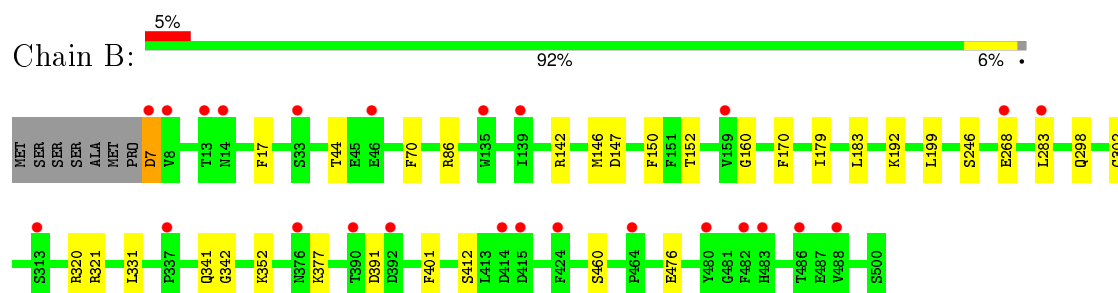
3 Residue-property plots [i](#)

These plots are drawn for all protein, RNA and DNA chains in the entry. The first graphic for a chain summarises the proportions of errors displayed in the second graphic. The second graphic shows the sequence view annotated by issues in geometry and electron density. Residues are color-coded according to the number of geometric quality criteria for which they contain at least one outlier: green = 0, yellow = 1, orange = 2 and red = 3 or more. A red dot above a residue indicates a poor fit to the electron density ($RSRZ > 2$). Stretches of 2 or more consecutive residues without any outlier are shown as a green connector. Residues present in the sample, but not in the model, are shown in grey.

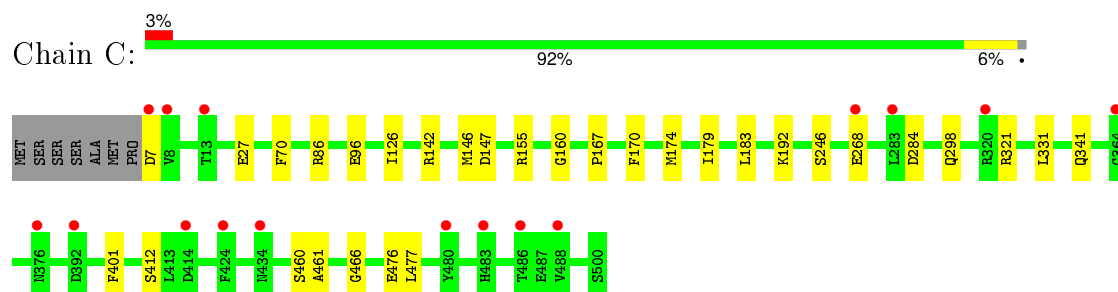
• Molecule 1: RETINAL DEHYDROGENASE 1



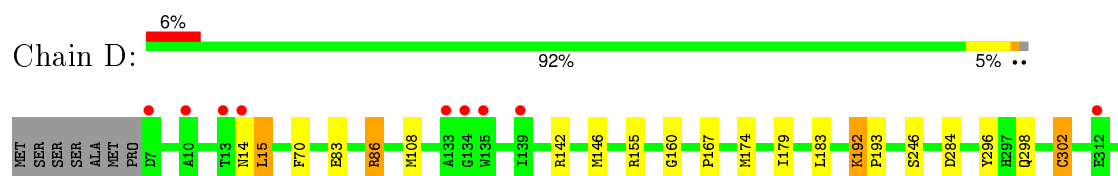
• Molecule 1: RETINAL DEHYDROGENASE 1

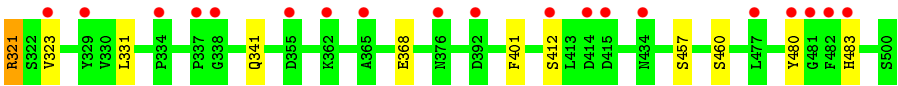


• Molecule 1: RETINAL DEHYDROGENASE 1



• Molecule 1: RETINAL DEHYDROGENASE 1





4 Data and refinement statistics

Property	Value	Source
Space group	C 1 2 1	Depositor
Cell constants a, b, c, α , β , γ	188.34Å 80.95Å 172.33Å 90.00° 118.13° 90.00°	Depositor
Resolution (Å)	49.38 – 2.08 49.38 – 2.08	Depositor EDS
% Data completeness (in resolution range)	98.4 (49.38-2.08) 98.4 (49.38-2.08)	Depositor EDS
R_{merge}	0.18	Depositor
R_{sym}	(Not available)	Depositor
$\langle I/\sigma(I) \rangle$ ¹	1.03 (at 2.08Å)	Xtriage
Refinement program	REFMAC 5.8.0073	Depositor
R, R_{free}	0.229 , 0.265 0.234 , 0.271	Depositor DCC
R_{free} test set	6743 reflections (5.26%)	DCC
Wilson B-factor (Å ²)	29.3	Xtriage
Anisotropy	0.293	Xtriage
Bulk solvent k_{sol} (e/Å ³), B_{sol} (Å ²)	0.33 , 42.6	EDS
Estimated twinning fraction	No twinning to report.	Xtriage
L-test for twinning ²	$\langle L \rangle = 0.48$, $\langle L^2 \rangle = 0.31$	Xtriage
Outliers	4 of 134836 reflections (0.003%)	Xtriage
F_o, F_c correlation	0.93	EDS
Total number of atoms	16433	wwPDB-VP
Average B, all atoms (Å ²)	27.0	wwPDB-VP

Xtriage's analysis on translational NCS is as follows: *The largest off-origin peak in the Patterson function is 18.81% of the height of the origin peak. No significant pseudotranslation is detected.*

¹Intensities estimated from amplitudes.

²Theoretical values of $\langle |L| \rangle$, $\langle L^2 \rangle$ for acentric reflections are 0.5, 0.375 respectively for untwinned datasets, and 0.333, 0.2 for perfectly twinned datasets.

5 Model quality ⓘ

5.1 Standard geometry ⓘ

Bond lengths and bond angles in the following residue types are not validated in this section: TXE, K9P, MG

The Z score for a bond length (or angle) is the number of standard deviations the observed value is removed from the expected value. A bond length (or angle) with $|Z| > 5$ is considered an outlier worth inspection. RMSZ is the root-mean-square of all Z scores of the bond lengths (or angles).

Mol	Chain	Bond lengths		Bond angles	
		RMSZ	# Z >5	RMSZ	# Z >5
1	A	0.79	2/3939 (0.1%)	0.88	10/5321 (0.2%)
1	B	0.75	1/3985 (0.0%)	0.81	8/5384 (0.1%)
1	C	0.78	1/3933 (0.0%)	0.80	7/5314 (0.1%)
1	D	0.73	0/3951	0.80	8/5338 (0.1%)
All	All	0.76	4/15808 (0.0%)	0.82	33/21357 (0.2%)

Chiral center outliers are detected by calculating the chiral volume of a chiral center and verifying if the center is modelled as a planar moiety or with the opposite hand. A planarity outlier is detected by checking planarity of atoms in a peptide group, atoms in a mainchain group or atoms of a sidechain that are expected to be planar.

Mol	Chain	#Chirality outliers	#Planarity outliers
1	B	0	1

All (4) bond length outliers are listed below:

Mol	Chain	Res	Type	Atoms	Z	Observed(Å)	Ideal(Å)
1	C	7	ASP	C-N	-15.75	0.97	1.34
1	B	7	ASP	C-N	-5.58	1.21	1.34
1	A	268[A]	GLU	N-CA	5.24	1.56	1.46
1	A	268[B]	GLU	N-CA	5.24	1.56	1.46

All (33) bond angle outliers are listed below:

Mol	Chain	Res	Type	Atoms	Z	Observed(°)	Ideal(°)
1	A	7	ASP	O-C-N	-18.94	92.39	122.70
1	A	7	ASP	CA-C-N	11.12	141.67	117.20
1	A	7	ASP	C-N-CA	8.66	143.34	121.70
1	B	321	ARG	NE-CZ-NH1	7.46	124.03	120.30
1	C	7	ASP	O-C-N	7.36	134.48	122.70

Continued on next page...

Continued from previous page...

Mol	Chain	Res	Type	Atoms	Z	Observed(°)	Ideal(°)
1	A	321	ARG	NE-CZ-NH1	6.89	123.74	120.30
1	B	321	ARG	NE-CZ-NH2	-6.61	116.99	120.30
1	D	155	ARG	NE-CZ-NH1	6.56	123.58	120.30
1	B	283	LEU	CA-CB-CG	6.54	130.34	115.30
1	D	86[A]	ARG	NE-CZ-NH2	-6.47	117.06	120.30
1	D	86[B]	ARG	NE-CZ-NH2	-6.47	117.06	120.30
1	C	142	ARG	NE-CZ-NH1	6.05	123.33	120.30
1	D	15	LEU	CA-CB-CG	-5.99	101.52	115.30
1	C	142	ARG	NE-CZ-NH2	-5.95	117.33	120.30
1	A	155	ARG	NE-CZ-NH1	5.93	123.26	120.30
1	D	86[A]	ARG	NE-CZ-NH1	5.81	123.21	120.30
1	D	86[B]	ARG	NE-CZ-NH1	5.81	123.21	120.30
1	B	391	ASP	CB-CG-OD2	5.65	123.39	118.30
1	D	155	ARG	NE-CZ-NH2	-5.59	117.50	120.30
1	A	321	ARG	NE-CZ-NH2	-5.57	117.52	120.30
1	C	147	ASP	CB-CG-OD1	5.55	123.30	118.30
1	A	268[A]	GLU	CA-C-O	5.51	131.68	120.10
1	A	268[B]	GLU	CA-C-O	5.51	131.68	120.10
1	B	142	ARG	NE-CZ-NH1	5.45	123.02	120.30
1	A	142	ARG	NE-CZ-NH1	5.43	123.02	120.30
1	A	155	ARG	NE-CZ-NH2	-5.33	117.63	120.30
1	B	320	ARG	NE-CZ-NH1	5.27	122.94	120.30
1	D	142	ARG	NE-CZ-NH1	5.25	122.92	120.30
1	C	7	ASP	CA-C-N	-5.13	105.91	117.20
1	B	142	ARG	NE-CZ-NH2	-5.07	117.77	120.30
1	C	155	ARG	NE-CZ-NH2	-5.05	117.77	120.30
1	C	155	ARG	NE-CZ-NH1	5.04	122.82	120.30
1	B	147	ASP	CB-CG-OD1	5.01	122.81	118.30

There are no chirality outliers.

All (1) planarity outliers are listed below:

Mol	Chain	Res	Type	Group
1	B	7	ASP	Mainchain

5.2 Too-close contacts ⓘ

In the following table, the Non-H and H(model) columns list the number of non-hydrogen atoms and hydrogen atoms in the chain respectively. The H(added) column lists the number of hydrogen atoms added and optimized by MolProbity. The Clashes column lists the number of clashes within the asymmetric unit, whereas Symm-Clashes lists symmetry related clashes.

Mol	Chain	Non-H	H(model)	H(added)	Clashes	Symm-Clashes
1	A	3847	0	3827	36	0
1	B	3882	0	3859	20	0
1	C	3846	0	3815	16	1
1	D	3860	0	3834	31	1
2	A	22	0	20	31	0
2	B	22	0	21	1	0
2	C	22	0	21	2	0
2	D	22	0	20	20	0
3	A	44	0	28	4	0
3	B	44	0	28	4	0
3	C	44	0	28	3	0
3	D	44	0	28	4	0
4	A	1	0	0	0	0
4	B	1	0	0	0	0
4	C	1	0	0	0	0
4	D	1	0	0	0	0
5	A	213	0	0	3	0
5	B	191	0	0	5	0
5	C	172	0	0	2	0
5	D	154	0	0	4	1
All	All	16433	0	15529	132	2

The all-atom clashscore is defined as the number of clashes found per 1000 atoms (including hydrogen atoms). The all-atom clashscore for this structure is 4.

All (132) close contacts within the same asymmetric unit are listed below, sorted by their clash magnitude.

Atom-1	Atom-2	Interatomic distance (Å)	Clash overlap (Å)
1:D:284:ASP:OD1	1:D:321:ARG:NH2	1.84	1.10
1:A:86[B]:ARG:HH11	1:A:86[B]:ARG:HB3	1.23	1.00
1:A:457:SER:OG	2:A:501:K9P:H12C	1.66	0.95
1:D:457:SER:CB	2:D:501:K9P:H12C	1.96	0.95
1:B:146[B]:MET:HE2	5:B:2095:HOH:O	1.71	0.89
1:B:146[B]:MET:CE	5:B:2095:HOH:O	2.17	0.89
2:D:501:K9P:HC2	2:D:501:K9P:H62C	1.55	0.88
2:A:501:K9P:C6	2:A:501:K9P:HC2	2.05	0.87
2:D:501:K9P:C6	2:D:501:K9P:HC2	2.05	0.87
1:A:86[B]:ARG:HH11	1:A:86[B]:ARG:CB	1.89	0.85
1:D:457:SER:OG	2:D:501:K9P:H12C	1.76	0.85
1:D:457:SER:HB3	2:D:501:K9P:H12C	1.58	0.85
1:A:268[B]:GLU:HG3	1:A:476:GLU:OE1	1.78	0.83
2:A:501:K9P:HC2	2:A:501:K9P:H62C	1.60	0.82

Continued on next page...

Continued from previous page...

Atom-1	Atom-2	Interatomic distance (Å)	Clash overlap (Å)
2:D:501:K9P:C1	2:D:501:K9P:H62C	2.12	0.79
1:B:268[A]:GLU:HG3	1:B:476:GLU:OE1	1.82	0.78
1:D:480[B]:TYR:CD1	1:D:483[B]:HIS:HE1	2.00	0.78
2:D:501:K9P:C	2:D:501:K9P:H62C	2.14	0.77
3:D:550:TXE:H5N	5:D:2075:HOH:O	1.85	0.76
1:D:457:SER:OG	2:D:501:K9P:C1	2.35	0.74
1:A:457:SER:HB3	2:A:501:K9P:H32C	1.68	0.73
2:D:501:K9P:C2	2:D:501:K9P:H62C	2.18	0.73
1:C:96:GLU:HG2	1:C:126:ILE:HD13	1.72	0.71
1:C:268[B]:GLU:HG3	1:C:476:GLU:OE1	1.91	0.71
1:A:457:SER:CB	2:A:501:K9P:H12C	2.22	0.70
1:D:192:LYS:HE2	1:D:193:PRO:O	1.92	0.69
3:A:550:TXE:H5N	5:A:2104:HOH:O	1.93	0.68
1:B:146[B]:MET:HE1	1:B:150:PHE:O	1.94	0.68
1:C:284:ASP:OD1	1:C:321:ARG:NH2	2.22	0.67
1:B:146[B]:MET:HE1	5:B:2095:HOH:O	1.89	0.66
1:D:480[B]:TYR:CD1	1:D:483[B]:HIS:CE1	2.84	0.65
3:D:550:TXE:C5N	5:D:2075:HOH:O	2.41	0.65
3:D:550:TXE:O7N	5:D:2103:HOH:O	2.14	0.65
3:A:550:TXE:C5N	5:A:2104:HOH:O	2.44	0.64
1:D:86[B]:ARG:HG2	1:D:86[B]:ARG:NH1	2.12	0.64
2:A:501:K9P:H62C	2:A:501:K9P:C	2.28	0.64
1:D:302[A]:CYS:SG	2:D:501:K9P:H16	2.39	0.63
2:A:501:K9P:H21C	2:A:501:K9P:H61C	1.81	0.62
1:A:296:TYR:CB	2:A:501:K9P:H21C	2.31	0.61
2:D:501:K9P:C7	2:D:501:K9P:HC2	2.31	0.61
1:A:86[B]:ARG:HH11	1:A:86[B]:ARG:CG	2.15	0.59
2:D:501:K9P:H21C	2:D:501:K9P:C6	2.33	0.59
3:B:550:TXE:H5N	5:B:2103:HOH:O	2.02	0.58
1:A:302[A]:CYS:SG	2:A:501:K9P:H16	2.43	0.58
1:B:146[B]:MET:SD	1:B:152:THR:OG1	2.60	0.57
1:C:96:GLU:HG2	1:C:126:ILE:CD1	2.34	0.57
1:A:146:MET:CE	1:B:460:SER:HB2	2.34	0.57
1:A:293:GLY:HA2	2:A:501:K9P:H11C	1.85	0.57
1:D:480[B]:TYR:CE1	1:D:483[B]:HIS:HE1	2.23	0.56
2:A:501:K9P:C2	2:A:501:K9P:H62C	2.36	0.56
2:A:501:K9P:HC2	2:A:501:K9P:C7	2.36	0.56
1:A:457:SER:CB	2:A:501:K9P:H32C	2.36	0.56
2:A:501:K9P:H62C	2:A:501:K9P:C1	2.36	0.56
1:B:331:LEU:HD22	1:B:341:GLN:HB3	1.88	0.56
1:C:146:MET:CE	1:D:460:SER:HB2	2.36	0.55

Continued on next page...

Continued from previous page...

Atom-1	Atom-2	Interatomic distance (Å)	Clash overlap (Å)
1:A:469:LYS:NZ	5:A:2183:HOH:O	2.31	0.55
1:D:298:GLN:NE2	5:D:2058:HOH:O	2.30	0.55
1:D:323:VAL:HG21	1:D:368:GLU:HB3	1.88	0.55
2:A:501:K9P:C6	2:A:501:K9P:C2	2.85	0.54
1:B:246:SER:HB3	3:B:550:TXE:O4B	2.08	0.54
1:B:146[B]:MET:O	1:B:146[B]:MET:HE2	2.07	0.54
1:A:268[B]:GLU:CG	1:A:476:GLU:OE1	2.54	0.54
1:A:331:LEU:HD22	1:A:341:GLN:HB3	1.89	0.53
1:C:331:LEU:HD22	1:C:341:GLN:HB3	1.89	0.53
2:D:501:K9P:C2	2:D:501:K9P:C6	2.86	0.53
1:C:170:PHE:CZ	2:C:501:K9P:H83C	2.44	0.53
1:A:460:SER:HB2	1:B:146[A]:MET:CE	2.38	0.52
1:D:86[B]:ARG:HH11	1:D:86[B]:ARG:HG2	1.73	0.52
1:C:167:PRO:HG2	1:C:174[B]:MET:SD	2.49	0.52
2:A:501:K9P:C3	2:A:501:K9P:C6	2.87	0.52
1:C:460:SER:HB2	1:D:146:MET:CE	2.40	0.52
3:B:550:TXE:C5N	5:B:2103:HOH:O	2.58	0.51
3:C:550:TXE:H5N	5:C:2081:HOH:O	2.09	0.51
1:D:331:LEU:HD22	1:D:341:GLN:HB3	1.92	0.51
1:B:44:THR:HA	1:B:377:LYS:HE3	1.92	0.51
2:D:501:K9P:H11	2:D:501:K9P:O	2.10	0.51
2:A:501:K9P:C3	2:A:501:K9P:H62C	2.41	0.50
1:A:83:GLU:OE1	1:A:86[A]:ARG:NH2	2.44	0.50
2:A:501:K9P:C6	2:A:501:K9P:H21C	2.41	0.49
1:A:86[B]:ARG:NH1	1:A:86[B]:ARG:HB3	2.08	0.49
1:A:296:TYR:CG	2:A:501:K9P:H41C	2.47	0.49
1:D:83:GLU:OE1	1:D:86[A]:ARG:NH1	2.45	0.49
1:D:86[B]:ARG:HH11	1:D:86[B]:ARG:CG	2.25	0.49
1:A:302[B]:CYS:SG	2:A:501:K9P:H16	2.54	0.48
3:C:550:TXE:C5N	5:C:2081:HOH:O	2.62	0.48
2:D:501:K9P:H21C	2:D:501:K9P:H61C	1.97	0.47
1:A:457:SER:OG	2:A:501:K9P:C1	2.51	0.47
2:D:501:K9P:H17	2:D:501:K9P:H82C	1.96	0.47
1:C:268[B]:GLU:OE1	1:C:466:GLY:HA2	2.14	0.47
1:D:480[B]:TYR:CE1	1:D:483[B]:HIS:CE1	3.02	0.47
1:D:15:LEU:HD22	1:D:108:MET:SD	2.53	0.47
1:B:170:PHE:CZ	2:B:501:K9P:H83C	2.50	0.47
1:A:296:TYR:CB	2:A:501:K9P:C2	2.92	0.47
1:A:86[B]:ARG:NH1	1:A:86[B]:ARG:CG	2.73	0.46
1:A:296:TYR:HB2	2:A:501:K9P:H22C	1.97	0.46
1:A:296:TYR:CG	2:A:501:K9P:H21C	2.51	0.46

Continued on next page...

Continued from previous page...

Atom-1	Atom-2	Interatomic distance (Å)	Clash overlap (Å)
1:C:461:ALA:HA	1:C:477:LEU:HD13	1.96	0.46
2:C:501:K9P:O	2:C:501:K9P:H11	2.15	0.46
1:A:296:TYR:CD1	2:A:501:K9P:H41C	2.51	0.46
2:A:501:K9P:O	2:A:501:K9P:H11	2.16	0.45
1:B:352:LYS:NZ	3:B:550:TXE:O3B	2.45	0.45
1:D:246:SER:HB3	3:D:550:TXE:O4B	2.16	0.45
1:A:246:SER:HB3	3:A:550:TXE:O4B	2.16	0.45
1:B:179:ILE:O	1:B:183:LEU:HG	2.16	0.45
1:A:296:TYR:HB3	2:A:501:K9P:H21C	1.97	0.45
1:C:179:ILE:O	1:C:183:LEU:HG	2.17	0.45
1:A:179:ILE:O	1:A:183:LEU:HG	2.18	0.44
1:A:7:ASP:OD1	1:A:8:VAL:N	2.50	0.44
2:A:501:K9P:C6	2:A:501:K9P:C	2.86	0.44
1:D:457:SER:OG	2:D:501:K9P:H11C	2.14	0.44
1:C:146:MET:HE3	1:D:460:SER:HB2	2.00	0.44
1:A:70:PHE:CZ	1:A:160:GLY:HA2	2.52	0.44
1:D:457:SER:HB3	2:D:501:K9P:H32C	1.99	0.43
1:D:480[B]:TYR:CG	1:D:483[B]:HIS:CE1	3.06	0.43
1:B:70:PHE:CZ	1:B:160:GLY:HA2	2.53	0.43
1:C:246:SER:HB3	3:C:550:TXE:O4B	2.18	0.43
1:A:167:PRO:HG2	1:A:174[B]:MET:SD	2.58	0.43
1:C:70:PHE:CZ	1:C:160:GLY:HA2	2.54	0.43
1:D:457:SER:CB	2:D:501:K9P:H32C	2.49	0.42
1:B:298:GLN:NE2	1:B:342:GLY:H	2.17	0.42
2:A:501:K9P:H62C	2:A:501:K9P:H32C	2.00	0.42
1:B:17:PHE:CE1	1:B:199:LEU:HD13	2.55	0.42
1:D:296:TYR:CG	2:D:501:K9P:H21C	2.55	0.41
1:D:167:PRO:HG2	1:D:174[A]:MET:SD	2.60	0.41
1:D:70:PHE:CZ	1:D:160:GLY:HA2	2.55	0.41
1:A:296:TYR:HB2	2:A:501:K9P:C2	2.51	0.41
1:A:225:GLY:HA3	3:A:550:TXE:C8A	2.51	0.41
1:D:179:ILE:O	1:D:183:LEU:HG	2.20	0.41
1:A:457:SER:HB3	2:A:501:K9P:H12C	1.98	0.41
1:A:146:MET:HE3	1:B:460:SER:HB2	2.02	0.41
1:B:86:ARG:CZ	1:B:86:ARG:HB3	2.51	0.41
1:C:86:ARG:HB3	1:C:86:ARG:CZ	2.50	0.40

All (2) symmetry-related close contacts are listed below. The label for Atom-2 includes the symmetry operator and encoded unit-cell translations to be applied.

Atom-1	Atom-2	Interatomic distance (Å)	Clash overlap (Å)
5:D:2047:HOH:O	5:D:2047:HOH:O[2_757]	1.78	0.42
1:C:27:GLU:OE1	1:D:14:ASN:ND2[1_545]	2.08	0.12

5.3 Torsion angles [i](#)

5.3.1 Protein backbone [i](#)

In the following table, the Percentiles column shows the percent Ramachandran outliers of the chain as a percentile score with respect to all X-ray entries followed by that with respect to entries of similar resolution.

The Analysed column shows the number of residues for which the backbone conformation was analysed, and the total number of residues.

Mol	Chain	Analysed	Favoured	Allowed	Outliers	Percentiles	
1	A	498/501 (99%)	487 (98%)	11 (2%)	0	100	100
1	B	503/501 (100%)	492 (98%)	11 (2%)	0	100	100
1	C	497/501 (99%)	483 (97%)	14 (3%)	0	100	100
1	D	499/501 (100%)	485 (97%)	14 (3%)	0	100	100
All	All	1997/2004 (100%)	1947 (98%)	50 (2%)	0	100	100

There are no Ramachandran outliers to report.

5.3.2 Protein sidechains [i](#)

In the following table, the Percentiles column shows the percent sidechain outliers of the chain as a percentile score with respect to all X-ray entries followed by that with respect to entries of similar resolution.

The Analysed column shows the number of residues for which the sidechain conformation was analysed, and the total number of residues.

Mol	Chain	Analysed	Rotameric	Outliers	Percentiles	
1	A	415/415 (100%)	410 (99%)	5 (1%)	78	83
1	B	420/415 (101%)	415 (99%)	5 (1%)	78	83
1	C	414/415 (100%)	410 (99%)	4 (1%)	82	86
1	D	415/415 (100%)	409 (99%)	6 (1%)	74	79
All	All	1664/1660 (100%)	1644 (99%)	20 (1%)	82	83

All (20) residues with a non-rotameric sidechain are listed below:

Mol	Chain	Res	Type
1	A	192	LYS
1	A	298	GLN
1	A	302[A]	CYS
1	A	302[B]	CYS
1	A	401	PHE
1	B	192	LYS
1	B	302[A]	CYS
1	B	302[B]	CYS
1	B	401	PHE
1	B	412	SER
1	C	192	LYS
1	C	298	GLN
1	C	401	PHE
1	C	412	SER
1	D	192	LYS
1	D	302[A]	CYS
1	D	302[B]	CYS
1	D	321	ARG
1	D	401	PHE
1	D	412	SER

Some sidechains can be flipped to improve hydrogen bonding and reduce clashes. All (7) such sidechains are listed below:

Mol	Chain	Res	Type
1	A	109	ASN
1	A	140	GLN
1	B	109	ASN
1	B	298	GLN
1	C	109	ASN
1	D	109	ASN
1	D	298	GLN

5.3.3 RNA ⓘ

There are no RNA molecules in this entry.

5.4 Non-standard residues in protein, DNA, RNA chains ⓘ

There are no non-standard protein/DNA/RNA residues in this entry.

5.5 Carbohydrates [i](#)

There are no carbohydrates in this entry.

5.6 Ligand geometry [i](#)

Of 12 ligands modelled in this entry, 4 are monoatomic - leaving 8 for Mogul analysis.

In the following table, the Counts columns list the number of bonds (or angles) for which Mogul statistics could be retrieved, the number of bonds (or angles) that are observed in the model and the number of bonds (or angles) that are defined in the chemical component dictionary. The Link column lists molecule types, if any, to which the group is linked. The Z score for a bond length (or angle) is the number of standard deviations the observed value is removed from the expected value. A bond length (or angle) with $|Z| > 2$ is considered an outlier worth inspection. RMSZ is the root-mean-square of all Z scores of the bond lengths (or angles).

Mol	Type	Chain	Res	Link	Bond lengths			Bond angles		
					Counts	RMSZ	# $ Z > 2$	Counts	RMSZ	# $ Z > 2$
2	K9P	A	501	1	23,24,24	0.23	0	23,34,34	0.70	1 (4%)
3	TXE	A	550	4	41,48,48	2.17	6 (14%)	43,73,73	2.44	5 (11%)
2	K9P	B	501	1	23,24,24	0.36	0	23,34,34	0.67	1 (4%)
3	TXE	B	550	4	41,48,48	2.27	6 (14%)	43,73,73	2.37	5 (11%)
2	K9P	C	501	1	23,24,24	0.32	0	23,34,34	0.77	1 (4%)
3	TXE	C	550	4	41,48,48	2.25	6 (14%)	43,73,73	2.43	5 (11%)
2	K9P	D	501	1	23,24,24	0.25	0	23,34,34	0.87	2 (8%)
3	TXE	D	550	4	41,48,48	2.20	5 (12%)	43,73,73	2.50	7 (16%)

In the following table, the Chirals column lists the number of chiral outliers, the number of chiral centers analysed, the number of these observed in the model and the number defined in the chemical component dictionary. Similar counts are reported in the Torsion and Rings columns. '-' means no outliers of that kind were identified.

Mol	Type	Chain	Res	Link	Chirals	Torsions	Rings
2	K9P	A	501	1	-	0/9/21/21	0/3/3/3
3	TXE	A	550	4	1/1/13/15	0/26/72/72	0/5/5/5
2	K9P	B	501	1	-	0/9/21/21	0/3/3/3
3	TXE	B	550	4	1/1/13/15	0/26/72/72	0/5/5/5
2	K9P	C	501	1	-	0/9/21/21	0/3/3/3
3	TXE	C	550	4	1/1/13/15	0/26/72/72	0/5/5/5
2	K9P	D	501	1	-	0/9/21/21	0/3/3/3
3	TXE	D	550	4	1/1/13/15	0/26/72/72	0/5/5/5

All (23) bond length outliers are listed below:

Mol	Chain	Res	Type	Atoms	Z	Observed(Å)	Ideal(Å)
3	B	550	TXE	C2N-C3N	-8.35	1.38	1.53
3	C	550	TXE	C2N-C3N	-8.19	1.39	1.53
3	D	550	TXE	C2N-C3N	-7.98	1.39	1.53
3	A	550	TXE	C2N-C3N	-7.71	1.39	1.53
3	D	550	TXE	C2N-N1N	-7.25	1.34	1.46
3	B	550	TXE	C2N-N1N	-7.25	1.34	1.46
3	C	550	TXE	C2N-N1N	-7.20	1.34	1.46
3	A	550	TXE	C2N-N1N	-7.10	1.34	1.46
3	B	550	TXE	C4N-C5N	-5.45	1.37	1.49
3	C	550	TXE	C4N-C5N	-5.38	1.37	1.49
3	D	550	TXE	C4N-C5N	-5.05	1.38	1.49
3	A	550	TXE	C4N-C5N	-5.03	1.38	1.49
3	C	550	TXE	C4N-C3N	-4.97	1.38	1.52
3	B	550	TXE	C4N-C3N	-4.78	1.39	1.52
3	D	550	TXE	C4N-C3N	-4.70	1.39	1.52
3	A	550	TXE	C4N-C3N	-4.70	1.39	1.52
3	A	550	TXE	C5A-C4A	2.49	1.46	1.40
3	C	550	TXE	C5A-C4A	2.55	1.46	1.40
3	C	550	TXE	C6N-C5N	2.59	1.38	1.33
3	B	550	TXE	C5A-C4A	2.60	1.46	1.40
3	B	550	TXE	C6N-C5N	2.71	1.38	1.33
3	A	550	TXE	C6N-C5N	2.76	1.38	1.33
3	D	550	TXE	C6N-C5N	2.77	1.38	1.33

All (27) bond angle outliers are listed below:

Mol	Chain	Res	Type	Atoms	Z	Observed(°)	Ideal(°)
3	D	550	TXE	N3A-C2A-N1A	-7.70	122.82	128.87
3	C	550	TXE	N3A-C2A-N1A	-6.53	123.74	128.87
3	A	550	TXE	N3A-C2A-N1A	-6.22	123.98	128.87
3	B	550	TXE	N3A-C2A-N1A	-6.10	124.08	128.87
3	D	550	TXE	C1'-N9A-C4A	-3.92	122.43	126.81
3	A	550	TXE	C1'-N9A-C4A	-3.84	122.52	126.81
2	C	501	K9P	C10-C9-C18	-2.84	118.22	121.04
2	B	501	K9P	C10-C9-C18	-2.69	118.36	121.04
2	D	501	K9P	C10-C9-C18	-2.67	118.38	121.04
2	D	501	K9P	C10-N-C5	-2.66	122.78	125.19
2	A	501	K9P	C10-C9-C18	-2.61	118.44	121.04
3	B	550	TXE	C1'-N9A-C4A	-2.35	124.18	126.81
3	D	550	TXE	O7N-C7N-N7N	-2.22	119.39	123.06
3	C	550	TXE	N6A-C6A-N1A	2.03	121.92	118.52
3	D	550	TXE	C3N-C7N-N7N	2.38	121.50	116.86
3	C	550	TXE	C3N-C4N-C5N	4.09	119.67	112.04

Continued on next page...

Continued from previous page...

Mol	Chain	Res	Type	Atoms	Z	Observed(°)	Ideal(°)
3	B	550	TXE	C3N-C4N-C5N	4.20	119.87	112.04
3	A	550	TXE	C3N-C4N-C5N	4.33	120.12	112.04
3	D	550	TXE	C3N-C4N-C5N	4.46	120.37	112.04
3	D	550	TXE	C2N-C3N-C7N	6.15	121.71	110.42
3	B	550	TXE	C2N-C3N-C7N	6.42	122.21	110.42
3	A	550	TXE	C2N-C3N-C7N	6.70	122.73	110.42
3	C	550	TXE	C2N-C3N-C7N	7.13	123.50	110.42
3	D	550	TXE	C2N-C3N-C4N	10.06	119.46	109.62
3	A	550	TXE	C2N-C3N-C4N	10.18	119.59	109.62
3	C	550	TXE	C2N-C3N-C4N	10.29	119.69	109.62
3	B	550	TXE	C2N-C3N-C4N	10.46	119.86	109.62

All (4) chirality outliers are listed below:

Mol	Chain	Res	Type	Atom
3	D	550	TXE	C3N
3	B	550	TXE	C3N
3	A	550	TXE	C3N
3	C	550	TXE	C3N

There are no torsion outliers.

There are no ring outliers.

8 monomers are involved in 69 short contacts:

Mol	Chain	Res	Type	Clashes	Symm-Clashes
2	A	501	K9P	31	0
3	A	550	TXE	4	0
2	B	501	K9P	1	0
3	B	550	TXE	4	0
2	C	501	K9P	2	0
3	C	550	TXE	3	0
2	D	501	K9P	20	0
3	D	550	TXE	4	0

5.7 Other polymers

There are no such residues in this entry.

5.8 Polymer linkage issues ⓘ

There are no chain breaks in this entry.

6 Fit of model and data

6.1 Protein, DNA and RNA chains

In the following table, the column labelled ‘#RSRZ> 2’ contains the number (and percentage) of RSRZ outliers, followed by percent RSRZ outliers for the chain as percentile scores relative to all X-ray entries and entries of similar resolution. The OWAB column contains the minimum, median, 95th percentile and maximum values of the occupancy-weighted average B-factor per residue. The column labelled ‘Q< 0.9’ lists the number of (and percentage) of residues with an average occupancy less than 0.9.

Mol	Chain	Analysed	<RSRZ>	#RSRZ>2	OWAB(Å ²)	Q<0.9
1	A	494/501 (98%)	0.46	26 (5%) 30 37	16, 25, 43, 67	0
1	B	494/501 (98%)	0.48	25 (5%) 32 39	16, 25, 41, 61	0
1	C	494/501 (98%)	0.40	16 (3%) 51 59	15, 25, 41, 68	0
1	D	494/501 (98%)	0.55	28 (5%) 27 34	17, 27, 45, 65	0
All	All	1976/2004 (98%)	0.47	95 (4%) 34 42	15, 25, 43, 68	0

All (95) RSRZ outliers are listed below:

Mol	Chain	Res	Type	RSRZ
1	B	480[A]	TYR	9.5
1	D	480[A]	TYR	7.4
1	B	483[A]	HIS	7.0
1	C	483[A]	HIS	6.9
1	B	376	ASN	6.0
1	D	483[A]	HIS	5.5
1	B	8	VAL	5.3
1	C	7	ASP	4.7
1	B	14	ASN	4.2
1	D	337	PRO	3.9
1	C	424	PHE	3.9
1	A	483	HIS	3.9
1	C	376	ASN	3.9
1	C	8	VAL	3.7
1	C	392	ASP	3.7
1	B	13	THR	3.5
1	D	482	PHE	3.4
1	D	365	ALA	3.3
1	A	268[A]	GLU	3.3
1	D	14	ASN	3.3
1	C	488	VAL	3.3

Continued on next page...

Continued from previous page...

Mol	Chain	Res	Type	RSRZ
1	C	480	TYR	3.2
1	A	434	ASN	3.2
1	D	338	GLY	3.2
1	A	329	TYR	3.1
1	D	312	GLU	3.0
1	D	376	ASN	3.0
1	A	7	ASP	3.0
1	B	337	PRO	2.9
1	D	7	ASP	2.9
1	A	376	ASN	2.9
1	A	480	TYR	2.8
1	D	477	LEU	2.8
1	D	334	PRO	2.8
1	D	13	THR	2.7
1	D	135	TRP	2.7
1	D	392	ASP	2.7
1	A	337	PRO	2.7
1	A	392	ASP	2.7
1	B	135	TRP	2.6
1	A	14	ASN	2.6
1	A	415	ASP	2.6
1	D	323	VAL	2.6
1	B	482	PHE	2.6
1	C	13	THR	2.6
1	C	434	ASN	2.6
1	D	362	LYS	2.5
1	B	33	SER	2.5
1	D	434	ASN	2.5
1	D	355	ASP	2.5
1	B	424	PHE	2.5
1	C	283	LEU	2.5
1	B	415	ASP	2.5
1	B	7	ASP	2.5
1	B	283	LEU	2.4
1	A	323	VAL	2.4
1	A	481	GLY	2.4
1	C	414	ASP	2.4
1	D	481	GLY	2.3
1	A	313	SER	2.3
1	C	268[A]	GLU	2.3
1	B	488	VAL	2.3
1	D	139	ILE	2.3

Continued on next page...

Continued from previous page...

Mol	Chain	Res	Type	RSRZ
1	A	365	ALA	2.3
1	B	46	GLU	2.3
1	D	329	TYR	2.2
1	B	390	THR	2.2
1	A	334	PRO	2.2
1	B	268[A]	GLU	2.2
1	B	392	ASP	2.2
1	A	86[A]	ARG	2.2
1	C	486	THR	2.2
1	D	10	ALA	2.2
1	A	139	ILE	2.2
1	D	412	SER	2.2
1	A	12	LEU	2.2
1	A	411	LYS	2.2
1	A	414	ASP	2.1
1	D	414	ASP	2.1
1	C	364	GLY	2.1
1	B	414	ASP	2.1
1	A	482	PHE	2.1
1	B	313	SER	2.1
1	B	486	THR	2.1
1	A	144	ILE	2.1
1	B	159[A]	VAL	2.1
1	C	320	ARG	2.1
1	A	283	LEU	2.1
1	A	312	GLU	2.1
1	D	415	ASP	2.1
1	D	133	ALA	2.1
1	D	134	GLY	2.1
1	A	412	SER	2.0
1	B	139	ILE	2.0
1	B	464	PRO	2.0

6.2 Non-standard residues in protein, DNA, RNA chains ⓘ

There are no non-standard protein/DNA/RNA residues in this entry.

6.3 Carbohydrates ⓘ

There are no carbohydrates in this entry.

6.4 Ligands [i](#)

In the following table, the Atoms column lists the number of modelled atoms in the group and the number defined in the chemical component dictionary. LLDF column lists the quality of electron density of the group with respect to its neighbouring residues in protein, DNA or RNA chains. The B-factors column lists the minimum, median, 95th percentile and maximum values of B factors of atoms in the group. The column labelled 'Q< 0.9' lists the number of atoms with occupancy less than 0.9.

Mol	Type	Chain	Res	Atoms	RSCC	RSR	LLDF	B-factors(Å ²)	Q<0.9
2	K9P	A	501	22/22	0.79	0.22	2.02	45,51,59,61	0
2	K9P	D	501	22/22	0.72	0.21	1.75	38,46,55,55	0
2	K9P	B	501	22/22	0.82	0.18	1.17	49,52,56,57	0
2	K9P	C	501	22/22	0.87	0.17	0.59	43,46,58,63	0
3	TXE	D	550	44/44	0.85	0.16	0.55	17,31,53,57	0
3	TXE	B	550	44/44	0.85	0.15	0.14	18,32,43,48	0
3	TXE	C	550	44/44	0.88	0.15	-0.03	20,27,35,37	0
3	TXE	A	550	44/44	0.87	0.15	-0.24	19,31,41,45	0
4	MG	A	551	1/1	0.70	0.24	-	45,45,45,45	0
4	MG	B	551	1/1	0.49	0.23	-	42,42,42,42	0
4	MG	D	551	1/1	0.22	0.24	-	66,66,66,66	0
4	MG	C	551	1/1	0.79	0.08	-	35,35,35,35	0

6.5 Other polymers [i](#)

There are no such residues in this entry.