



Full wwPDB X-ray Structure Validation Report ⓘ

Feb 1, 2016 – 07:24 AM GMT

PDB ID : 3AMQ
Title : E134C-Cellobiose co-crystal of cellulase 12A from thermotoga maritima
Authors : Cheng, Y.-S.; Ko, T.-P.; Liu, J.-R.; Guo, R.-T.
Deposited on : 2010-08-20
Resolution : 1.80 Å(reported)

This is a Full wwPDB X-ray Structure Validation Report for a publicly released PDB entry.
We welcome your comments at validation@mail.wwpdb.org
A user guide is available at
<http://wwpdb.org/validation/2016/XrayValidationReportHelp>
with specific help available everywhere you see the ⓘ symbol.

The following versions of software and data (see [references ⓘ](#)) were used in the production of this report:

MolProbity : 4.02b-467
Mogul : 1.7 (RC4), CSD as536be (2015)
Xtriage (Phenix) : 1.9-1692
EDS : rb-20026688
Percentile statistics : 20151230.v01 (using entries in the PDB archive December 30th 2015)
Refmac : 5.8.0135
CCP4 : 6.5.0
Ideal geometry (proteins) : Engh & Huber (2001)
Ideal geometry (DNA, RNA) : Parkinson et al. (1996)
Validation Pipeline (wwPDB-VP) : trunk26865

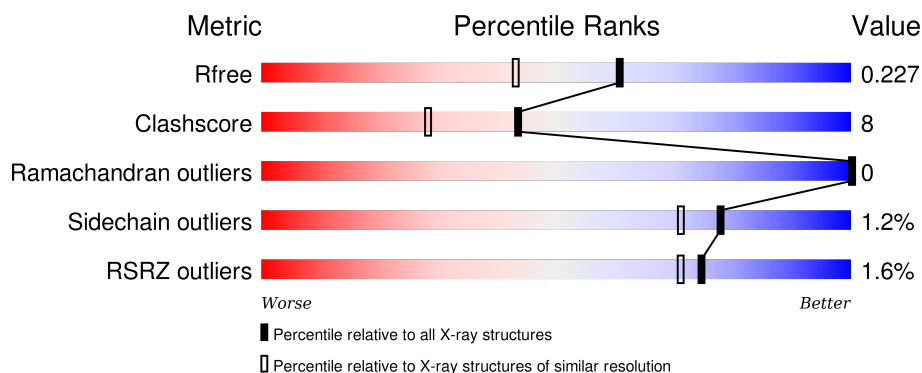
1 Overall quality at a glance ⓘ

The following experimental techniques were used to determine the structure:

X-RAY DIFFRACTION

The reported resolution of this entry is 1.80 Å.

Percentile scores (ranging between 0-100) for global validation metrics of the entry are shown in the following graphic. The table shows the number of entries on which the scores are based.



Metric	Whole archive (#Entries)	Similar resolution (#Entries, resolution range(Å))
R_{free}	91344	4533 (1.80-1.80)
Clashscore	102246	5383 (1.80-1.80)
Ramachandran outliers	100387	5320 (1.80-1.80)
Sidechain outliers	100360	5319 (1.80-1.80)
RSRZ outliers	91569	4547 (1.80-1.80)

The table below summarises the geometric issues observed across the polymeric chains and their fit to the electron density. The red, orange, yellow and green segments on the lower bar indicate the fraction of residues that contain outliers for ≥ 3 , 2, 1 and 0 types of geometric quality criteria. A grey segment represents the fraction of residues that are not modelled. The numeric value for each fraction is indicated below the corresponding segment, with a dot representing fractions $\leq 5\%$. The upper red bar (where present) indicates the fraction of residues that have poor fit to the electron density. The numeric value is given above the bar.

Mol	Chain	Length	Quality of chain
1	A	265	<div> <div>86%</div> <div>11%</div> <div>.</div> </div>
1	B	265	<div> <div>89%</div> <div>7%</div> <div>.</div> </div>
1	C	265	<div> <div>3%</div> <div>80%</div> <div>15%</div> <div>..</div> </div>
1	D	265	<div> <div>2%</div> <div>76%</div> <div>18%</div> <div>..</div> </div>

The following table lists non-polymeric compounds, carbohydrate monomers and non-standard

residues in protein, DNA, RNA chains that are outliers for geometric or electron-density-fit criteria:

Mol	Type	Chain	Res	Chirality	Geometry	Clashes	Electron density
3	BGC	B	902	-	-	-	X
3	BGC	C	902	-	-	-	X

2 Entry composition

There are 4 unique types of molecules in this entry. The entry contains 9533 atoms, of which 0 are hydrogens and 0 are deuteriums.

In the tables below, the ZeroOcc column contains the number of atoms modelled with zero occupancy, the AltConf column contains the number of residues with at least one atom in alternate conformation and the Trace column contains the number of residues modelled with at most 2 atoms.

- Molecule 1 is a protein called Endo-1,4-beta-glucanase.

Mol	Chain	Residues	Atoms					ZeroOcc	AltConf	Trace
1	A	257	Total	C	N	O	S	0	0	0
			2105	1375	328	394	8			
1	B	256	Total	C	N	O	S	0	0	0
			2095	1370	327	390	8			
1	C	256	Total	C	N	O	S	0	0	0
			2095	1370	327	390	8			
1	D	256	Total	C	N	O	S	0	0	0
			2095	1370	327	390	8			

There are 36 discrepancies between the modelled and reference sequences:

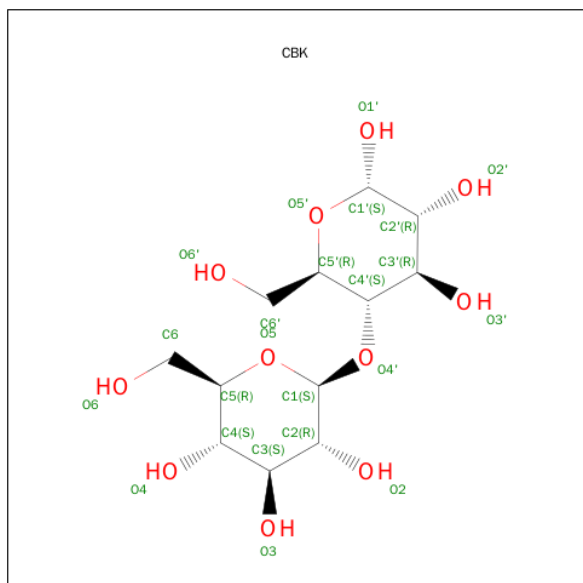
Chain	Residue	Modelled	Actual	Comment	Reference
A	-7	MET	-	EXPRESSION TAG	UNP Q60032
A	-6	GLY	-	EXPRESSION TAG	UNP Q60032
A	-5	HIS	-	EXPRESSION TAG	UNP Q60032
A	-4	HIS	-	EXPRESSION TAG	UNP Q60032
A	-3	HIS	-	EXPRESSION TAG	UNP Q60032
A	-2	HIS	-	EXPRESSION TAG	UNP Q60032
A	-1	HIS	-	EXPRESSION TAG	UNP Q60032
A	0	HIS	-	EXPRESSION TAG	UNP Q60032
A	134	CYS	GLU	ENGINEERED MUTATION	UNP Q60032
B	-7	MET	-	EXPRESSION TAG	UNP Q60032
B	-6	GLY	-	EXPRESSION TAG	UNP Q60032
B	-5	HIS	-	EXPRESSION TAG	UNP Q60032
B	-4	HIS	-	EXPRESSION TAG	UNP Q60032
B	-3	HIS	-	EXPRESSION TAG	UNP Q60032
B	-2	HIS	-	EXPRESSION TAG	UNP Q60032
B	-1	HIS	-	EXPRESSION TAG	UNP Q60032
B	0	HIS	-	EXPRESSION TAG	UNP Q60032
B	134	CYS	GLU	ENGINEERED MUTATION	UNP Q60032
C	-7	MET	-	EXPRESSION TAG	UNP Q60032
C	-6	GLY	-	EXPRESSION TAG	UNP Q60032
C	-5	HIS	-	EXPRESSION TAG	UNP Q60032

Continued on next page...

Continued from previous page...

Chain	Residue	Modelled	Actual	Comment	Reference
C	-4	HIS	-	EXPRESSION TAG	UNP Q60032
C	-3	HIS	-	EXPRESSION TAG	UNP Q60032
C	-2	HIS	-	EXPRESSION TAG	UNP Q60032
C	-1	HIS	-	EXPRESSION TAG	UNP Q60032
C	0	HIS	-	EXPRESSION TAG	UNP Q60032
C	134	CYS	GLU	ENGINEERED MUTATION	UNP Q60032
D	-7	MET	-	EXPRESSION TAG	UNP Q60032
D	-6	GLY	-	EXPRESSION TAG	UNP Q60032
D	-5	HIS	-	EXPRESSION TAG	UNP Q60032
D	-4	HIS	-	EXPRESSION TAG	UNP Q60032
D	-3	HIS	-	EXPRESSION TAG	UNP Q60032
D	-2	HIS	-	EXPRESSION TAG	UNP Q60032
D	-1	HIS	-	EXPRESSION TAG	UNP Q60032
D	0	HIS	-	EXPRESSION TAG	UNP Q60032
D	134	CYS	GLU	ENGINEERED MUTATION	UNP Q60032

- Molecule 2 is SUGAR (4-O-BETA-D-GLUCOPYRANOSYL-ALPHA-D-GLUCOPYRANOSE) (three-letter code: CBK) (formula: C₁₂H₂₂O₁₁).



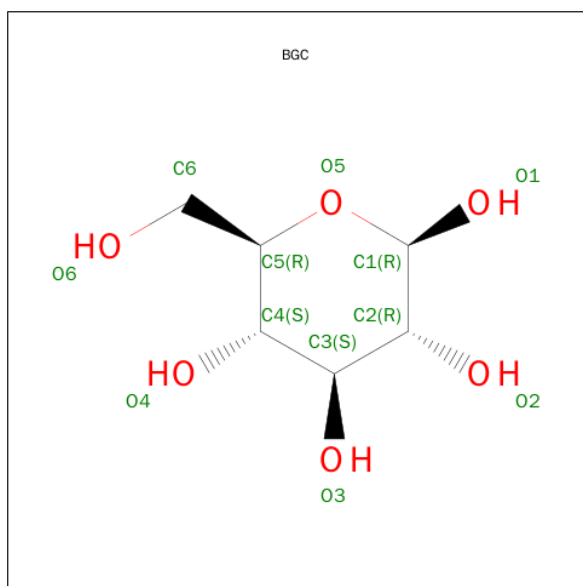
Mol	Chain	Residues	Atoms			ZeroOcc	AltConf
2	A	1	Total	C	O	0	0
			23	12	11		
2	B	1	Total	C	O	0	0
			23	12	11		
2	C	1	Total	C	O	0	0
			23	12	11		

Continued on next page...

Continued from previous page...

Mol	Chain	Residues	Atoms			ZeroOcc	AltConf
2	D	1	Total	C	O	0	0
			23	12	11		

- Molecule 3 is SUGAR (BETA-D-GLUCOSE) (three-letter code: BGC) (formula: C₆H₁₂O₆).



Mol	Chain	Residues	Atoms			ZeroOcc	AltConf
3	A	1	Total	C	O	0	0
			12	6	6		
3	B	1	Total	C	O	0	0
			12	6	6		
3	C	1	Total	C	O	0	0
			12	6	6		

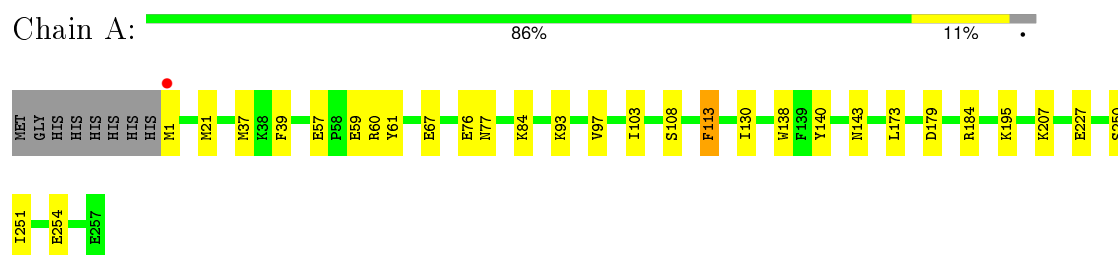
- Molecule 4 is water.

Mol	Chain	Residues	Atoms		ZeroOcc	AltConf
4	A	270	Total	O	0	0
			270	270		
4	B	345	Total	O	0	0
			345	345		
4	C	192	Total	O	0	0
			192	192		
4	D	208	Total	O	0	0
			208	208		

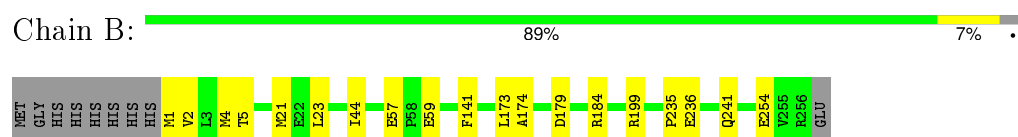
3 Residue-property plots [i](#)

These plots are drawn for all protein, RNA and DNA chains in the entry. The first graphic for a chain summarises the proportions of errors displayed in the second graphic. The second graphic shows the sequence view annotated by issues in geometry and electron density. Residues are color-coded according to the number of geometric quality criteria for which they contain at least one outlier: green = 0, yellow = 1, orange = 2 and red = 3 or more. A red dot above a residue indicates a poor fit to the electron density ($RSRZ > 2$). Stretches of 2 or more consecutive residues without any outlier are shown as a green connector. Residues present in the sample, but not in the model, are shown in grey.

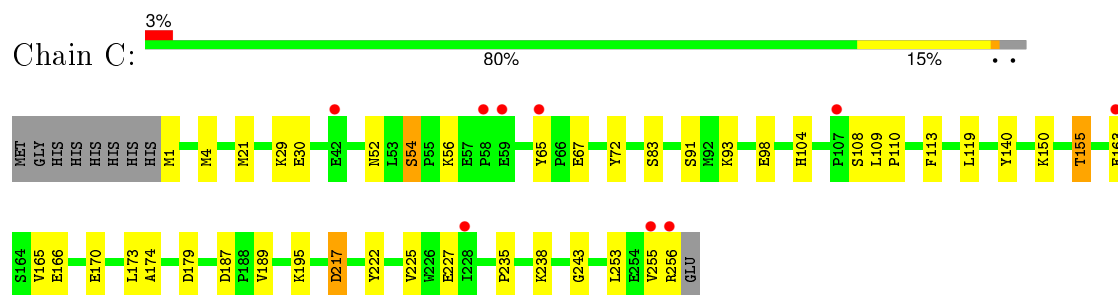
- Molecule 1: Endo-1,4-beta-glucanase



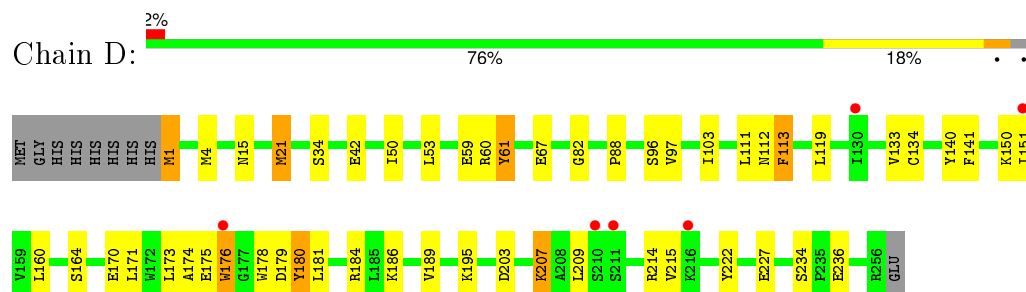
- Molecule 1: Endo-1,4-beta-glucanase



- Molecule 1: Endo-1,4-beta-glucanase



- Molecule 1: Endo-1,4-beta-glucanase



4 Data and refinement statistics

Property	Value	Source
Space group	C 1 2 1	Depositor
Cell constants a, b, c, α , β , γ	230.90Å 46.91Å 116.41Å 90.00° 114.19° 90.00°	Depositor
Resolution (Å)	25.00 – 1.80 25.01 – 1.80	Depositor EDS
% Data completeness (in resolution range)	(Not available) (25.00-1.80) 94.3 (25.01-1.80)	Depositor EDS
R_{merge}	0.04	Depositor
R_{sym}	(Not available)	Depositor
$\langle I/\sigma(I) \rangle$ ¹	4.94 (at 1.80Å)	Xtriage
Refinement program	CNS 1.1	Depositor
R, R_{free}	0.190 , 0.230 0.186 , 0.227	Depositor DCC
R_{free} test set	5060 reflections (5.32%)	DCC
Wilson B-factor (Å ²)	24.0	Xtriage
Anisotropy	0.755	Xtriage
Bulk solvent k_{sol} (e/Å ³), B_{sol} (Å ²)	0.36 , 48.7	EDS
Estimated twinning fraction	No twinning to report.	Xtriage
L-test for twinning ²	$\langle L \rangle = 0.49$, $\langle L^2 \rangle = 0.32$	Xtriage
Outliers	0 of 100098 reflections	Xtriage
F_o, F_c correlation	0.97	EDS
Total number of atoms	9533	wwPDB-VP
Average B, all atoms (Å ²)	35.0	wwPDB-VP

Xtriage's analysis on translational NCS is as follows: *The largest off-origin peak in the Patterson function is 4.10% of the height of the origin peak. No significant pseudotranslation is detected.*

¹Intensities estimated from amplitudes.

²Theoretical values of $\langle |L| \rangle$, $\langle L^2 \rangle$ for acentric reflections are 0.5, 0.375 respectively for untwinned datasets, and 0.333, 0.2 for perfectly twinned datasets.

5 Model quality

5.1 Standard geometry

Bond lengths and bond angles in the following residue types are not validated in this section: CBK, BGC

The Z score for a bond length (or angle) is the number of standard deviations the observed value is removed from the expected value. A bond length (or angle) with $|Z| > 5$ is considered an outlier worth inspection. RMSZ is the root-mean-square of all Z scores of the bond lengths (or angles).

Mol	Chain	Bond lengths		Bond angles	
		RMSZ	$\# Z > 5$	RMSZ	$\# Z > 5$
1	A	0.93	0/2174	0.92	1/2950 (0.0%)
1	B	1.02	1/2164 (0.0%)	0.96	3/2938 (0.1%)
1	C	0.89	0/2164	0.92	1/2938 (0.0%)
1	D	0.92	0/2164	0.92	2/2938 (0.1%)
All	All	0.94	1/8666 (0.0%)	0.93	7/11764 (0.1%)

Chiral center outliers are detected by calculating the chiral volume of a chiral center and verifying if the center is modelled as a planar moiety or with the opposite hand. A planarity outlier is detected by checking planarity of atoms in a peptide group, atoms in a mainchain group or atoms of a sidechain that are expected to be planar.

Mol	Chain	#Chirality outliers	#Planarity outliers
1	A	0	1
1	C	0	1
1	D	0	2
All	All	0	4

All (1) bond length outliers are listed below:

Mol	Chain	Res	Type	Atoms	Z	Observed(Å)	Ideal(Å)
1	B	57	GLU	CG-CD	5.63	1.60	1.51

All (7) bond angle outliers are listed below:

Mol	Chain	Res	Type	Atoms	Z	Observed(°)	Ideal(°)
1	B	199	ARG	NE-CZ-NH2	-7.23	116.69	120.30
1	B	199	ARG	NE-CZ-NH1	6.53	123.57	120.30
1	C	113	PHE	N-CA-C	-6.23	94.17	111.00
1	D	113	PHE	N-CA-C	-5.83	95.25	111.00
1	A	113	PHE	N-CA-C	-5.34	96.58	111.00

Continued on next page...

Continued from previous page...

Mol	Chain	Res	Type	Atoms	Z	Observed(°)	Ideal(°)
1	D	21	MET	CG-SD-CE	-5.23	91.83	100.20
1	B	23	LEU	N-CA-C	-5.21	96.92	111.00

There are no chirality outliers.

All (4) planarity outliers are listed below:

Mol	Chain	Res	Type	Group
1	A	61	TYR	Sidechain
1	C	65	TYR	Sidechain
1	D	180	TYR	Sidechain
1	D	61	TYR	Sidechain

5.2 Too-close contacts

In the following table, the Non-H and H(model) columns list the number of non-hydrogen atoms and hydrogen atoms in the chain respectively. The H(added) column lists the number of hydrogen atoms added and optimized by MolProbity. The Clashes column lists the number of clashes within the asymmetric unit, whereas Symm-Clashes lists symmetry related clashes.

Mol	Chain	Non-H	H(model)	H(added)	Clashes	Symm-Clashes
1	A	2105	0	2007	22	0
1	B	2095	0	2001	12	0
1	C	2095	0	2001	44	1
1	D	2095	0	2001	58	0
2	A	23	0	22	0	0
2	B	23	0	22	0	0
2	C	23	0	22	0	0
2	D	23	0	22	0	0
3	A	12	0	12	0	0
3	B	12	0	12	1	0
3	C	12	0	12	0	0
4	A	270	0	0	5	0
4	B	345	0	0	4	2
4	C	192	0	0	10	0
4	D	208	0	0	8	0
All	All	9533	0	8134	134	2

The all-atom clashscore is defined as the number of clashes found per 1000 atoms (including hydrogen atoms). The all-atom clashscore for this structure is 8.

All (134) close contacts within the same asymmetric unit are listed below, sorted by their clash magnitude.

Atom-1	Atom-2	Interatomic distance (Å)	Clash overlap (Å)
1:A:195:LYS:HE2	4:A:979:HOH:O	1.54	1.05
1:C:93:LYS:HD2	1:C:256:ARG:HD2	1.46	0.95
1:C:256:ARG:HB2	4:C:444:HOH:O	1.70	0.89
1:D:164:SER:HB3	4:D:541:HOH:O	1.71	0.89
1:D:173:LEU:HD12	1:D:174:ALA:H	1.44	0.83
1:C:173:LEU:HD23	4:C:940:HOH:O	1.77	0.82
1:D:173:LEU:HD12	1:D:174:ALA:N	1.98	0.79
1:D:174:ALA:HB1	1:D:176:TRP:HE1	1.50	0.76
1:C:52:ASN:HB3	4:C:1023:HOH:O	1.85	0.76
1:C:30:GLU:HG3	4:C:410:HOH:O	1.88	0.74
1:D:151:ILE:HD13	1:D:173:LEU:HB3	1.68	0.73
1:D:174:ALA:HB1	1:D:176:TRP:NE1	2.04	0.73
1:D:103:ILE:HD13	1:D:113:PHE:HB2	1.72	0.71
1:D:103:ILE:CD1	1:D:113:PHE:HB2	2.22	0.69
1:C:253:LEU:HG	1:C:255:VAL:HG23	1.74	0.68
1:D:158:PHE:HE1	1:D:160:LEU:HB2	1.57	0.68
1:A:103:ILE:HD13	1:A:113:PHE:HB2	1.76	0.68
1:C:235:PRO:HB3	4:C:703:HOH:O	1.93	0.68
1:C:187:ASP:OD1	4:C:964:HOH:O	2.13	0.66
1:C:52:ASN:O	4:C:410:HOH:O	2.15	0.64
1:A:93:LYS:HD3	1:A:254:GLU:OE2	1.98	0.64
1:D:175:GLU:HB3	1:D:214:ARG:CZ	2.28	0.63
1:A:250:SER:HB2	4:A:279:HOH:O	1.98	0.62
1:D:140:TYR:HB2	1:D:189:VAL:O	1.99	0.62
1:B:4:MET:HE1	1:B:21:MET:HG3	1.83	0.61
1:C:4:MET:HE2	1:C:21:MET:HG3	1.81	0.61
1:D:42:GLU:HG3	4:D:320:HOH:O	2.01	0.61
1:B:59:GLU:HG2	4:B:305:HOH:O	2.00	0.61
1:D:174:ALA:CB	1:D:176:TRP:HE1	2.13	0.60
1:A:103:ILE:CD1	1:A:113:PHE:HB2	2.32	0.60
1:D:158:PHE:CE1	1:D:160:LEU:HB2	2.35	0.60
1:A:21:MET:HG2	1:A:37:MET:SD	2.42	0.58
1:C:29:LYS:HE3	1:C:56:LYS:HA	1.84	0.58
1:D:1:MET:N	4:D:323:HOH:O	2.36	0.58
1:D:151:ILE:HD13	1:D:173:LEU:CB	2.34	0.58
1:C:150:LYS:HE3	1:C:170:GLU:HG2	1.85	0.57
1:D:4:MET:HE1	1:D:21:MET:HG3	1.87	0.57
1:D:4:MET:CE	1:D:21:MET:HG3	2.35	0.57
1:C:163:GLU:O	1:C:165:VAL:HG13	2.05	0.56
1:D:15:ASN:ND2	4:D:708:HOH:O	2.25	0.56
1:A:130:ILE:HD12	1:A:130:ILE:N	2.20	0.56
1:C:109:LEU:HD12	1:C:110:PRO:HD2	1.87	0.56

Continued on next page...

Continued from previous page...

Atom-1	Atom-2	Interatomic distance (Å)	Clash overlap (Å)
1:D:60:ARG:HH21	1:D:176:TRP:HZ3	1.52	0.55
1:D:59:GLU:HG3	4:D:823:HOH:O	2.06	0.55
1:C:173:LEU:HG	1:C:174:ALA:N	2.21	0.55
1:D:203:ASP:O	1:D:207:LYS:HG2	2.06	0.55
1:D:179:ASP:OD1	1:D:214:ARG:NH2	2.39	0.55
1:C:4:MET:HE2	1:C:21:MET:HE2	1.89	0.54
1:D:1:MET:CB	4:D:322:HOH:O	2.56	0.54
1:C:4:MET:CE	1:C:21:MET:CE	2.85	0.54
1:A:59:GLU:HG2	4:A:302:HOH:O	2.07	0.54
1:D:174:ALA:CB	1:D:176:TRP:NE1	2.70	0.54
1:A:21:MET:CG	1:A:37:MET:SD	2.96	0.53
1:D:150:LYS:NZ	1:D:170:GLU:HG2	2.23	0.53
1:C:4:MET:HE2	1:C:21:MET:CE	2.38	0.53
1:D:1:MET:HB2	4:D:322:HOH:O	2.09	0.53
1:D:174:ALA:HB1	1:D:176:TRP:CD1	2.44	0.53
1:C:253:LEU:CG	1:C:255:VAL:HG23	2.39	0.53
1:D:96:SER:OG	1:D:195:LYS:NZ	2.27	0.53
1:A:108:SER:HB2	4:A:355:HOH:O	2.08	0.53
1:D:150:LYS:HZ2	1:D:170:GLU:HG2	1.74	0.52
1:C:140:TYR:HB2	1:C:189:VAL:O	2.10	0.51
1:B:235:PRO:HB2	1:B:236:GLU:OE2	2.10	0.51
1:D:153:GLU:OE2	1:D:186:LYS:NZ	2.43	0.51
1:C:163:GLU:HG3	1:C:165:VAL:HG13	1.93	0.50
1:D:154:PHE:HE2	1:D:171:LEU:HD22	1.76	0.50
1:A:93:LYS:HD3	1:A:254:GLU:CD	2.31	0.50
1:B:1:MET:HG2	1:B:2:VAL:N	2.25	0.50
1:C:256:ARG:C	4:C:444:HOH:O	2.49	0.49
1:C:4:MET:CE	1:C:21:MET:HE3	2.42	0.49
1:D:203:ASP:O	1:D:207:LYS:HD3	2.12	0.49
1:A:130:ILE:H	1:A:130:ILE:HD12	1.77	0.49
1:C:98:GLU:OE1	1:C:195:LYS:NZ	2.44	0.49
1:C:83:SER:HB3	4:C:678:HOH:O	2.13	0.48
1:D:209:LEU:HD13	1:D:215:VAL:HG21	1.95	0.48
1:D:133:VAL:HG12	1:D:134:CYS:N	2.28	0.48
3:B:902:BGC:O1	4:B:426:HOH:O	2.20	0.48
1:C:4:MET:CE	1:C:21:MET:HE2	2.43	0.48
1:C:155:THR:HG23	1:C:166:GLU:OE2	2.14	0.48
1:B:241:GLN:HG2	4:B:584:HOH:O	2.13	0.47
1:D:111:LEU:HD23	1:D:111:LEU:C	2.34	0.47
1:C:93:LYS:HB2	1:C:256:ARG:HG3	1.96	0.47
1:C:163:GLU:HG3	1:C:165:VAL:CG1	2.45	0.47

Continued on next page...

Continued from previous page...

Atom-1	Atom-2	Interatomic distance (Å)	Clash overlap (Å)
1:D:61:TYR:CZ	1:D:234:SER:HB2	2.50	0.47
1:D:176:TRP:HE3	4:D:512:HOH:O	1.98	0.46
1:C:163:GLU:O	1:C:163:GLU:HG3	2.16	0.46
1:D:150:LYS:HE3	1:D:170:GLU:HG2	1.97	0.46
1:D:4:MET:HE2	1:D:21:MET:SD	2.56	0.46
1:D:88:PRO:HG3	1:D:222:TYR:CE1	2.51	0.46
1:A:76:GLU:O	1:A:77:ASN:C	2.55	0.45
1:C:72:TYR:O	1:C:225:VAL:HB	2.17	0.45
1:D:150:LYS:CE	1:D:170:GLU:HG2	2.46	0.45
1:A:1:MET:HA	1:A:39:PHE:O	2.16	0.45
1:C:4:MET:HE3	1:C:21:MET:HE3	1.99	0.45
1:D:141:PHE:CD2	1:D:184:ARG:HD2	2.52	0.44
1:D:119:LEU:HA	1:D:222:TYR:O	2.17	0.44
1:C:238:LYS:HD3	1:C:238:LYS:HA	1.72	0.43
1:C:4:MET:HE3	1:C:21:MET:CE	2.47	0.43
1:A:207:LYS:HE3	4:A:788:HOH:O	2.18	0.43
1:A:97:VAL:HG22	1:A:251:ILE:HG22	2.00	0.43
1:C:91:SER:HB3	1:C:255:VAL:HG13	2.01	0.43
1:C:98:GLU:HB2	1:C:195:LYS:HG3	2.01	0.43
1:A:173:LEU:C	1:A:173:LEU:HD23	2.39	0.42
1:D:50:ILE:HD12	1:D:53:LEU:HD21	2.00	0.42
1:D:67:GLU:OE1	1:D:227:GLU:OE2	2.37	0.42
1:B:254:GLU:HG3	4:B:341:HOH:O	2.19	0.42
1:B:4:MET:HE2	1:B:21:MET:SD	2.59	0.42
1:D:203:ASP:O	1:D:207:LYS:CD	2.67	0.42
1:A:113:PHE:HB3	1:A:140:TYR:HB3	2.00	0.42
1:C:109:LEU:HA	1:C:110:PRO:HD3	1.83	0.42
1:D:153:GLU:CD	1:D:186:LYS:NZ	2.72	0.42
1:A:67:GLU:OE1	1:A:227:GLU:OE2	2.38	0.42
1:C:108:SER:O	1:C:110:PRO:HD3	2.19	0.41
1:C:54:SER:HB3	4:C:410:HOH:O	2.21	0.41
1:D:154:PHE:HE2	1:D:171:LEU:CD2	2.33	0.41
1:D:97:VAL:O	1:D:195:LYS:HA	2.21	0.41
1:D:153:GLU:OE1	1:D:186:LYS:NZ	2.53	0.41
1:D:180:TYR:C	1:D:181:LEU:HD12	2.41	0.41
1:D:154:PHE:CE2	1:D:171:LEU:HD22	2.55	0.41
1:C:93:LYS:HD2	1:C:256:ARG:CD	2.34	0.41
1:B:21:MET:HE2	1:B:44:ILE:CD1	2.51	0.41
1:A:138:TRP:HB2	1:A:184:ARG:HA	2.03	0.41
1:C:104:HIS:CE1	1:C:243:GLY:HA3	2.55	0.41
1:A:57:GLU:HB2	1:A:60:ARG:HG2	2.03	0.41

Continued on next page...

Continued from previous page...

Atom-1	Atom-2	Interatomic distance (Å)	Clash overlap (Å)
1:C:119:LEU:HA	1:C:222:TYR:O	2.20	0.41
1:C:67:GLU:OE1	1:C:227:GLU:OE2	2.38	0.41
1:B:173:LEU:HG	1:B:174:ALA:N	2.35	0.41
1:D:178:TRP:HD1	1:D:179:ASP:O	2.04	0.40
1:B:141:PHE:CD2	1:B:184:ARG:HD2	2.57	0.40
1:B:4:MET:CE	1:B:21:MET:HG3	2.50	0.40
1:C:238:LYS:HG2	1:D:236:GLU:HG3	2.03	0.40
1:A:84:LYS:O	1:D:82:GLY:HA2	2.22	0.40
1:D:111:LEU:HD23	1:D:112:ASN:N	2.37	0.40
1:B:5:THR:HG23	1:D:34:SER:HB3	2.03	0.40

All (2) symmetry-related close contacts are listed below. The label for Atom-2 includes the symmetry operator and encoded unit-cell translations to be applied.

Atom-1	Atom-2	Interatomic distance (Å)	Clash overlap (Å)
4:B:374:HOH:O	4:B:374:HOH:O[2_555]	1.98	0.22
1:C:217:ASP:OD2	4:B:1003:HOH:O[2_545]	2.12	0.08

5.3 Torsion angles ⓘ

5.3.1 Protein backbone ⓘ

In the following table, the Percentiles column shows the percent Ramachandran outliers of the chain as a percentile score with respect to all X-ray entries followed by that with respect to entries of similar resolution.

The Analysed column shows the number of residues for which the backbone conformation was analysed, and the total number of residues.

Mol	Chain	Analysed	Favoured	Allowed	Outliers	Percentiles	
1	A	255/265 (96%)	247 (97%)	8 (3%)	0	100	100
1	B	254/265 (96%)	246 (97%)	8 (3%)	0	100	100
1	C	254/265 (96%)	245 (96%)	9 (4%)	0	100	100
1	D	254/265 (96%)	244 (96%)	10 (4%)	0	100	100
All	All	1017/1060 (96%)	982 (97%)	35 (3%)	0	100	100

There are no Ramachandran outliers to report.

5.3.2 Protein sidechains ⓘ

In the following table, the Percentiles column shows the percent sidechain outliers of the chain as a percentile score with respect to all X-ray entries followed by that with respect to entries of similar resolution.

The Analysed column shows the number of residues for which the sidechain conformation was analysed, and the total number of residues.

Mol	Chain	Analysed	Rotameric	Outliers	Percentiles	
1	A	227/234 (97%)	225 (99%)	2 (1%)	84	80
1	B	226/234 (97%)	225 (100%)	1 (0%)	93	92
1	C	226/234 (97%)	221 (98%)	5 (2%)	60	45
1	D	226/234 (97%)	223 (99%)	3 (1%)	76	68
All	All	905/936 (97%)	894 (99%)	11 (1%)	78	71

All (11) residues with a non-rotameric sidechain are listed below:

Mol	Chain	Res	Type
1	A	143	ASN
1	A	179	ASP
1	B	179	ASP
1	C	1	MET
1	C	54	SER
1	C	155	THR
1	C	179	ASP
1	C	217	ASP
1	D	1	MET
1	D	176	TRP
1	D	207	LYS

Some sidechains can be flipped to improve hydrogen bonding and reduce clashes. All (4) such sidechains are listed below:

Mol	Chain	Res	Type
1	A	200	HIS
1	B	200	HIS
1	B	241	GLN
1	C	104	HIS

5.3.3 RNA ⓘ

There are no RNA molecules in this entry.

5.4 Non-standard residues in protein, DNA, RNA chains ⓘ

There are no non-standard protein/DNA/RNA residues in this entry.

5.5 Carbohydrates ⓘ

There are no carbohydrates in this entry.

5.6 Ligand geometry ⓘ

7 ligands are modelled in this entry.

In the following table, the Counts columns list the number of bonds (or angles) for which Mogul statistics could be retrieved, the number of bonds (or angles) that are observed in the model and the number of bonds (or angles) that are defined in the chemical component dictionary. The Link column lists molecule types, if any, to which the group is linked. The Z score for a bond length (or angle) is the number of standard deviations the observed value is removed from the expected value. A bond length (or angle) with $|Z| > 2$ is considered an outlier worth inspection. RMSZ is the root-mean-square of all Z scores of the bond lengths (or angles).

Mol	Type	Chain	Res	Link	Bond lengths			Bond angles		
					Counts	RMSZ	$\# Z > 2$	Counts	RMSZ	$\# Z > 2$
2	CBK	A	901	-	24,24,24	0.46	0	35,35,35	0.87	0
3	BGC	A	902	-	12,12,12	0.61	0	17,17,17	0.84	1 (5%)
2	CBK	B	901	-	24,24,24	0.47	0	35,35,35	0.82	0
3	BGC	B	902	-	12,12,12	0.54	0	17,17,17	1.04	3 (17%)
2	CBK	C	901	-	24,24,24	0.44	0	35,35,35	0.86	1 (2%)
3	BGC	C	902	-	12,12,12	1.00	0	17,17,17	1.03	1 (5%)
2	CBK	D	901	-	24,24,24	0.47	0	35,35,35	0.83	1 (2%)

In the following table, the Chirals column lists the number of chiral outliers, the number of chiral centers analysed, the number of these observed in the model and the number defined in the chemical component dictionary. Similar counts are reported in the Torsion and Rings columns. '-' means no outliers of that kind were identified.

Mol	Type	Chain	Res	Link	Chirals	Torsions	Rings
2	CBK	A	901	-	-	0/8/48/48	0/2/2/2
3	BGC	A	902	-	-	0/2/22/22	0/1/1/1
2	CBK	B	901	-	-	0/8/48/48	0/2/2/2
3	BGC	B	902	-	-	0/2/22/22	0/1/1/1
2	CBK	C	901	-	-	0/8/48/48	0/2/2/2
3	BGC	C	902	-	-	0/2/22/22	0/1/1/1
2	CBK	D	901	-	-	0/8/48/48	0/2/2/2

There are no bond length outliers.

All (7) bond angle outliers are listed below:

Mol	Chain	Res	Type	Atoms	Z	Observed($^{\circ}$)	Ideal($^{\circ}$)
3	C	902	BGC	C1-O5-C5	-2.44	108.95	113.47
2	D	901	CBK	C6-C5-C4	-2.39	107.13	113.02
3	B	902	BGC	C1-O5-C5	-2.25	109.31	113.47
3	B	902	BGC	C3-C4-C5	2.02	113.72	110.20
2	C	901	CBK	O5'-C5'-C4'	2.10	114.17	109.75
3	B	902	BGC	C1-C2-C3	2.14	113.61	110.43
3	A	902	BGC	C3-C4-C5	2.40	114.38	110.20

There are no chirality outliers.

There are no torsion outliers.

There are no ring outliers.

1 monomer is involved in 1 short contact:

Mol	Chain	Res	Type	Clashes	Symm-Clashes
3	B	902	BGC	1	0

5.7 Other polymers [i](#)

There are no such residues in this entry.

5.8 Polymer linkage issues [i](#)

There are no chain breaks in this entry.

6 Fit of model and data ⓘ

6.1 Protein, DNA and RNA chains ⓘ

In the following table, the column labelled ‘#RSRZ> 2’ contains the number (and percentage) of RSRZ outliers, followed by percent RSRZ outliers for the chain as percentile scores relative to all X-ray entries and entries of similar resolution. The OWAB column contains the minimum, median, 95th percentile and maximum values of the occupancy-weighted average B-factor per residue. The column labelled ‘Q< 0.9’ lists the number of (and percentage) of residues with an average occupancy less than 0.9.

Mol	Chain	Analysed	<RSRZ>	#RSRZ>2	OWAB(Å ²)	Q<0.9
1	A	257/265 (96%)	-0.24	1 (0%) 93 91	22, 32, 46, 59	0
1	B	256/265 (96%)	-0.40	0 100 100	19, 27, 41, 47	0
1	C	256/265 (96%)	0.07	9 (3%) 48 42	18, 35, 55, 73	0
1	D	256/265 (96%)	0.07	6 (2%) 64 59	19, 34, 57, 68	0
All	All	1025/1060 (96%)	-0.12	16 (1%) 74 71	18, 32, 52, 73	0

All (16) RSRZ outliers are listed below:

Mol	Chain	Res	Type	RSRZ
1	C	256	ARG	5.0
1	C	255	VAL	3.6
1	D	176	TRP	3.5
1	D	216	LYS	3.3
1	C	58	PRO	3.1
1	C	59	GLU	2.5
1	A	1	MET	2.5
1	C	163	GLU	2.5
1	D	210	SER	2.3
1	D	211	SER	2.3
1	C	42	GLU	2.1
1	C	65	TYR	2.0
1	D	130	ILE	2.0
1	C	107	PRO	2.0
1	C	228	ILE	2.0
1	D	151	ILE	2.0

6.2 Non-standard residues in protein, DNA, RNA chains ⓘ

There are no non-standard protein/DNA/RNA residues in this entry.

6.3 Carbohydrates [i](#)

There are no carbohydrates in this entry.

6.4 Ligands [i](#)

In the following table, the Atoms column lists the number of modelled atoms in the group and the number defined in the chemical component dictionary. LLDF column lists the quality of electron density of the group with respect to its neighbouring residues in protein, DNA or RNA chains. The B-factors column lists the minimum, median, 95th percentile and maximum values of B factors of atoms in the group. The column labelled 'Q< 0.9' lists the number of atoms with occupancy less than 0.9.

Mol	Type	Chain	Res	Atoms	RSCC	RSR	LLDF	B-factors(\AA^2)	Q<0.9
3	BGC	B	902	12/12	0.84	0.20	3.49	31,45,49,54	0
3	BGC	C	902	12/12	0.73	0.24	3.31	39,48,50,53	0
3	BGC	A	902	12/12	0.90	0.10	0.26	33,43,45,47	0
2	CBK	D	901	23/23	0.93	0.09	-0.63	26,34,41,45	0
2	CBK	C	901	23/23	0.96	0.07	-1.00	23,28,33,34	0
2	CBK	B	901	23/23	0.97	0.07	-1.21	21,25,32,35	0
2	CBK	A	901	23/23	0.97	0.06	-1.38	25,28,34,35	0

6.5 Other polymers [i](#)

There are no such residues in this entry.