



Full wwPDB X-ray Structure Validation Report ⓘ

Feb 1, 2016 – 02:50 PM GMT

PDB ID : 4AP0
Title : The mitotic kinesin Eg5 in complex with Mg-ADP and ispinesib
Authors : Schuettelkopf, A.W.; Talapatra, S.K.; Kozielski, F.
Deposited on : 2012-03-30
Resolution : 2.59 Å(reported)

This is a Full wwPDB X-ray Structure Validation Report for a publicly released PDB entry.
We welcome your comments at validation@mail.wwpdb.org
A user guide is available at
<http://wwpdb.org/validation/2016/XrayValidationReportHelp>
with specific help available everywhere you see the ⓘ symbol.

The following versions of software and data (see [references ⓘ](#)) were used in the production of this report:

MolProbity : 4.02b-467
Mogul : 1.7 (RC4), CSD as536be (2015)
Xtriage (Phenix) : 1.9-1692
EDS : rb-20026688
Percentile statistics : 20151230.v01 (using entries in the PDB archive December 30th 2015)
Refmac : 5.8.0135
CCP4 : 6.5.0
Ideal geometry (proteins) : Engh & Huber (2001)
Ideal geometry (DNA, RNA) : Parkinson et al. (1996)
Validation Pipeline (wwPDB-VP) : trunk26865

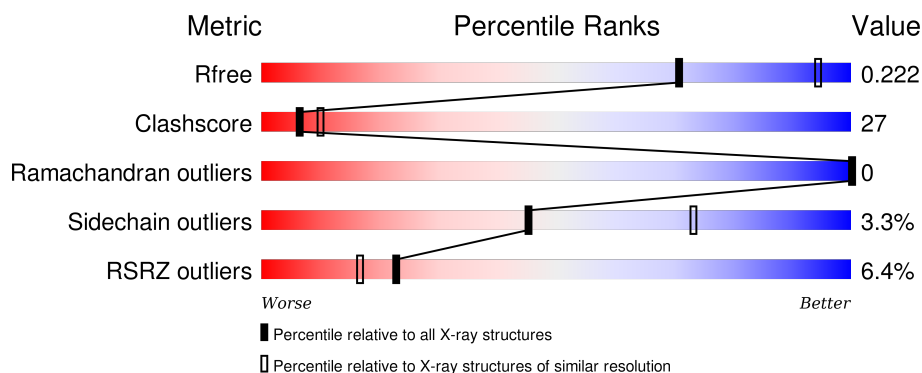
1 Overall quality at a glance

The following experimental techniques were used to determine the structure:

X-RAY DIFFRACTION

The reported resolution of this entry is 2.59 Å.

Percentile scores (ranging between 0-100) for global validation metrics of the entry are shown in the following graphic. The table shows the number of entries on which the scores are based.



Metric	Whole archive (#Entries)	Similar resolution (#Entries, resolution range(Å))
R_{free}	91344	2328 (2.60-2.60)
Clashscore	102246	2679 (2.60-2.60)
Ramachandran outliers	100387	2635 (2.60-2.60)
Sidechain outliers	100360	2635 (2.60-2.60)
RSRZ outliers	91569	2334 (2.60-2.60)

The table below summarises the geometric issues observed across the polymeric chains and their fit to the electron density. The red, orange, yellow and green segments on the lower bar indicate the fraction of residues that contain outliers for ≥ 3 , 2, 1 and 0 types of geometric quality criteria. A grey segment represents the fraction of residues that are not modelled. The numeric value for each fraction is indicated below the corresponding segment, with a dot representing fractions $\leq 5\%$. The upper red bar (where present) indicates the fraction of residues that have poor fit to the electron density. The numeric value is given above the bar.

Mol	Chain	Length	Quality of chain
1	A	370	<div> <div>5%</div> <div>46%</div> <div>41%</div> <div>12%</div> </div>
1	B	370	<div> <div>8%</div> <div>48%</div> <div>34%</div> <div>16%</div> </div>
1	C	370	<div> <div>6%</div> <div>48%</div> <div>34%</div> <div>16%</div> </div>
1	D	370	<div> <div>3%</div> <div>51%</div> <div>31%</div> <div>16%</div> </div>

2 Entry composition

There are 6 unique types of molecules in this entry. The entry contains 9849 atoms, of which 0 are hydrogens and 0 are deuteriums.

In the tables below, the ZeroOcc column contains the number of atoms modelled with zero occupancy, the AltConf column contains the number of residues with at least one atom in alternate conformation and the Trace column contains the number of residues modelled with at most 2 atoms.

- Molecule 1 is a protein called KINESIN-LIKE PROTEIN KIF11.

Mol	Chain	Residues	Atoms					ZeroOcc	AltConf	Trace
1	A	325	Total	C	N	O	S	0	0	0
			2475	1559	423	484	9			
1	B	312	Total	C	N	O	S	0	0	0
			2374	1492	407	465	10			
1	C	311	Total	C	N	O	S	0	0	0
			2347	1476	405	456	10			
1	D	309	Total	C	N	O	S	0	0	0
			2357	1486	403	459	9			

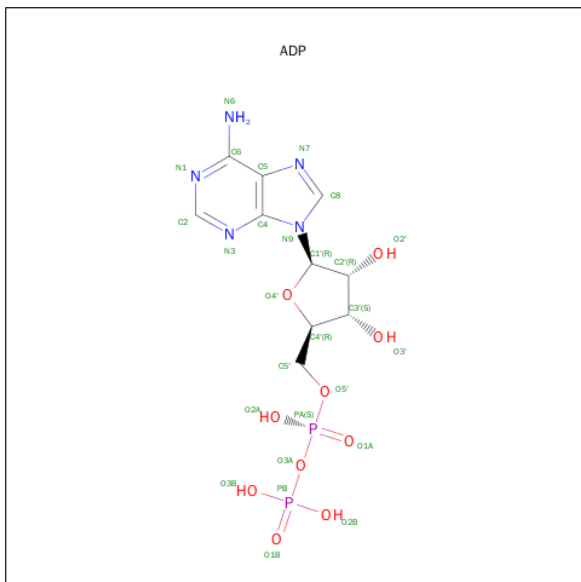
There are 8 discrepancies between the modelled and reference sequences:

Chain	Residue	Modelled	Actual	Comment	Reference
A	-1	GLY	-	EXPRESSION TAG	UNP P52732
A	0	PRO	-	EXPRESSION TAG	UNP P52732
B	-1	GLY	-	EXPRESSION TAG	UNP P52732
B	0	PRO	-	EXPRESSION TAG	UNP P52732
C	-1	GLY	-	EXPRESSION TAG	UNP P52732
C	0	PRO	-	EXPRESSION TAG	UNP P52732
D	-1	GLY	-	EXPRESSION TAG	UNP P52732
D	0	PRO	-	EXPRESSION TAG	UNP P52732

- Molecule 2 is MAGNESIUM ION (three-letter code: MG) (formula: Mg).

Mol	Chain	Residues	Atoms		ZeroOcc	AltConf
2	B	1	Total	Mg	0	0
			1	1		
2	A	1	Total	Mg	0	0
			1	1		
2	D	1	Total	Mg	0	0
			1	1		
2	C	1	Total	Mg	0	0
			1	1		

- Molecule 3 is ADENOSINE-5'-DIPHOSPHATE (three-letter code: ADP) (formula: $\text{C}_{10}\text{H}_{15}\text{N}_5\text{O}_{10}\text{P}_2$).

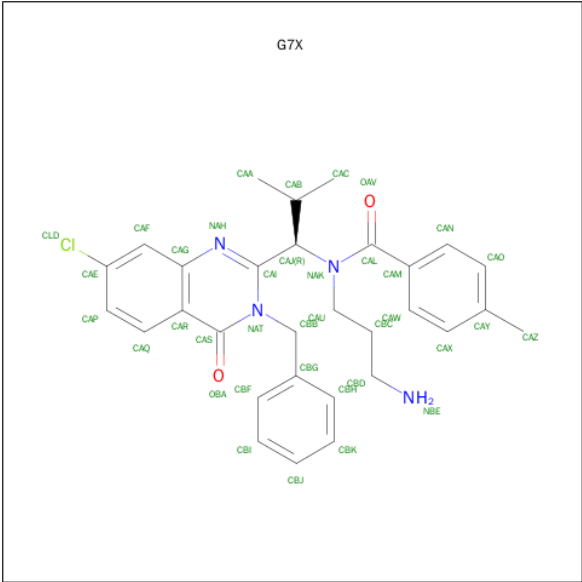


Mol	Chain	Residues	Atoms				ZeroOcc	AltConf	
3	A	1	Total 27	C 10	N 5	O 10	P 2	0	0
3	B	1	Total 27	C 10	N 5	O 10	P 2	0	0
3	C	1	Total 27	C 10	N 5	O 10	P 2	0	0
3	D	1	Total 27	C 10	N 5	O 10	P 2	0	0

- Molecule 4 is CHLORIDE ION (three-letter code: CL) (formula: Cl).

Mol	Chain	Residues	Atoms	ZeroOcc	AltConf
4	B	3	Total Cl 3 3	0	0
4	A	2	Total Cl 2 2	0	0
4	D	1	Total Cl 1 1	0	0

- Molecule 5 is ISPINESIB MESILATE (three-letter code: G7X) (formula: $\text{C}_{30}\text{H}_{33}\text{ClN}_4\text{O}_2$).



Mol	Chain	Residues	Atoms					ZeroOcc	AltConf
5	A	1	Total	C	Cl	N	O	0	0
			34	28	1	3	2		
5	B	1	Total	C	Cl	N	O	0	0
			37	30	1	4	2		
5	C	1	Total	C	Cl	N	O	0	0
			37	30	1	4	2		
5	D	1	Total	C	Cl	N	O	0	0
			37	30	1	4	2		

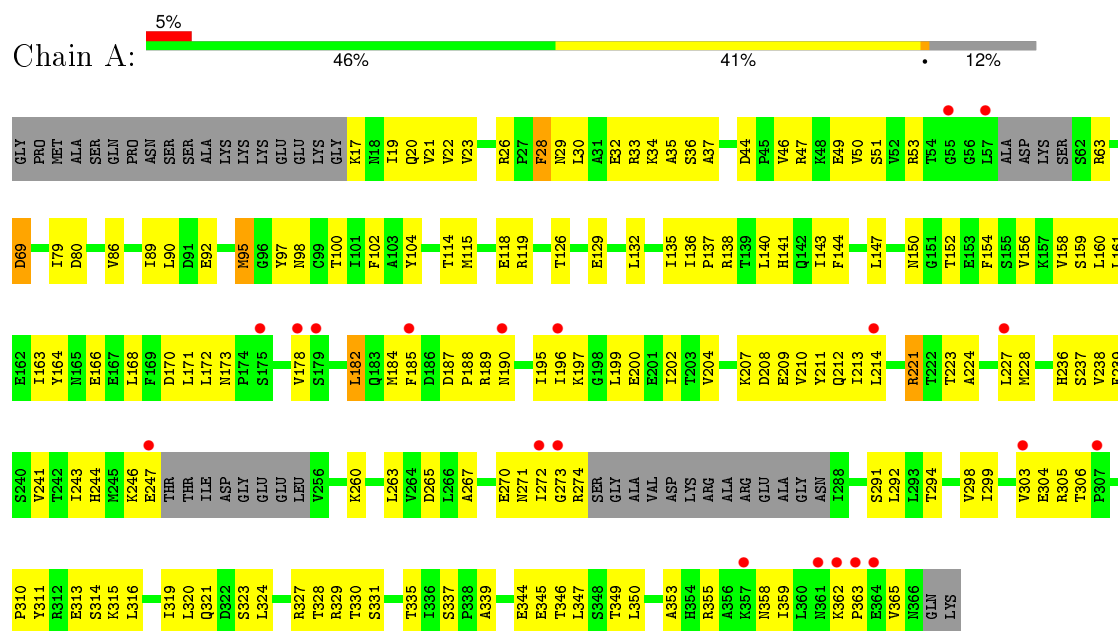
- Molecule 6 is water.

Mol	Chain	Residues	Atoms		ZeroOcc	AltConf
6	A	9	Total	O	0	0
			9	9		
6	B	6	Total	O	0	0
			6	6		
6	C	10	Total	O	0	0
			10	10		
6	D	8	Total	O	0	0
			8	8		

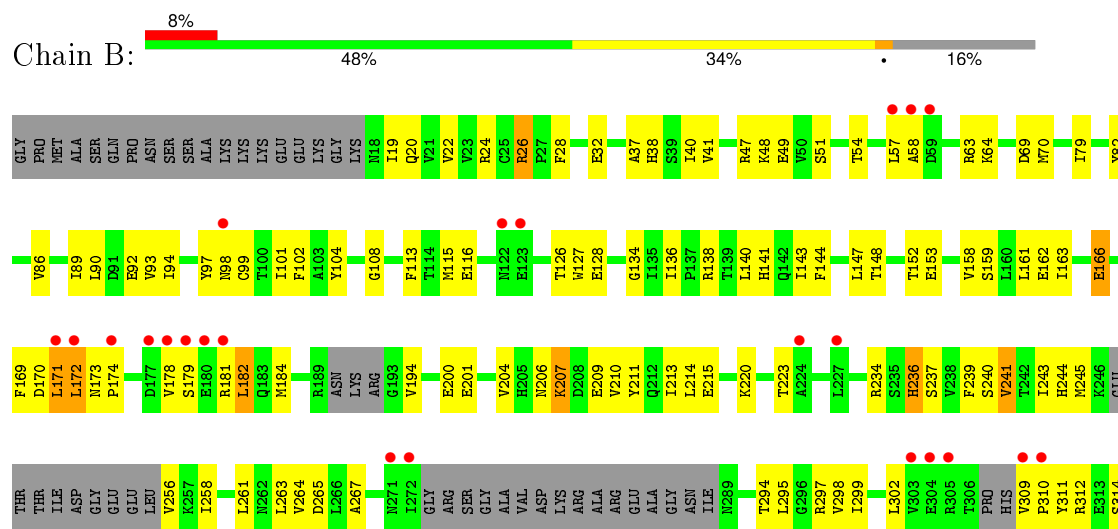
3 Residue-property plots

These plots are drawn for all protein, RNA and DNA chains in the entry. The first graphic for a chain summarises the proportions of errors displayed in the second graphic. The second graphic shows the sequence view annotated by issues in geometry and electron density. Residues are color-coded according to the number of geometric quality criteria for which they contain at least one outlier: green = 0, yellow = 1, orange = 2 and red = 3 or more. A red dot above a residue indicates a poor fit to the electron density ($RSRZ > 2$). Stretches of 2 or more consecutive residues without any outlier are shown as a green connector. Residues present in the sample, but not in the model, are shown in grey.

• Molecule 1: KINESIN-LIKE PROTEIN KIF11

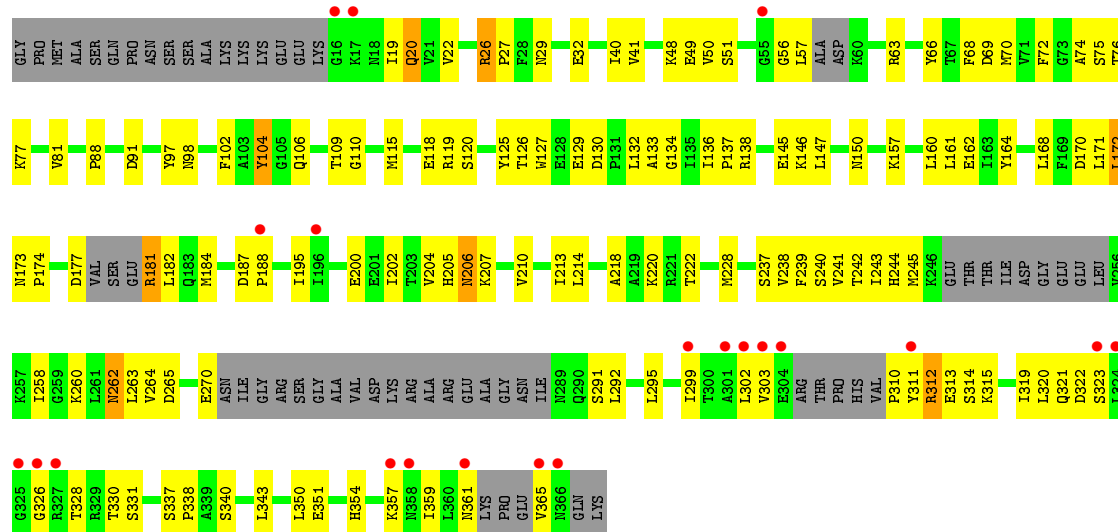


• Molecule 1: KINESIN-LIKE PROTEIN KIF11

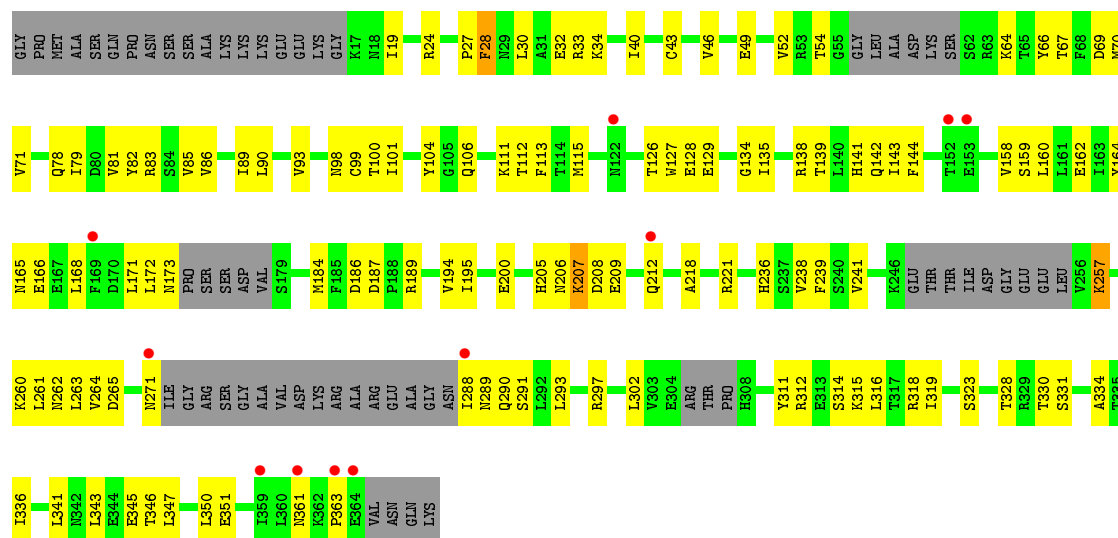




- Molecule 1: KINESIN-LIKE PROTEIN KIF11



- Molecule 1: KINESIN-LIKE PROTEIN KIF11



4 Data and refinement statistics

Property	Value	Source
Space group	P 1 21 1	Depositor
Cell constants a, b, c, α , β , γ	64.72Å 112.61Å 106.91Å 90.00° 90.02° 90.00°	Depositor
Resolution (Å)	29.86 – 2.59 29.86 – 2.59	Depositor EDS
% Data completeness (in resolution range)	95.8 (29.86-2.59) 95.7 (29.86-2.59)	Depositor EDS
R_{merge}	0.07	Depositor
R_{sym}	(Not available)	Depositor
$\langle I/\sigma(I) \rangle$ ¹	1.63 (at 2.61Å)	Xtriage
Refinement program	PHENIX (PHENIX.REFINE)	Depositor
R, R_{free}	0.203 , 0.253 0.191 , 0.222	Depositor DCC
R_{free} test set	2298 reflections (5.32%)	DCC
Wilson B-factor (Å ²)	45.3	Xtriage
Anisotropy	0.524	Xtriage
Bulk solvent k_{sol} (e/Å ³), B_{sol} (Å ²)	0.29 , 18.5	EDS
Estimated twinning fraction	0.452 for H,-K,-L 0.019 for -h,-l,-k 0.012 for -h,l,k 0.430 for h,-k,-l	Xtriage
Reported twinning fraction	0.452 for H,-K,-L	Depositor
L-test for twinning ²	$\langle L \rangle = 0.45$, $\langle L^2 \rangle = 0.28$	Xtriage
Outliers	1 of 45505 reflections (0.002%)	Xtriage
F_o, F_c correlation	0.95	EDS
Total number of atoms	9849	wwPDB-VP
Average B, all atoms (Å ²)	57.0	wwPDB-VP

Xtriage's analysis on translational NCS is as follows: *The analyses of the Patterson function reveals a significant off-origin peak that is 32.28 % of the origin peak, indicating pseudo translational symmetry. The chance of finding a peak of this or larger height randomly in a structure without pseudo translational symmetry is equal to 9.6433e-04. The detected translational NCS is most likely also responsible for the elevated intensity ratio.*

¹ Intensities estimated from amplitudes.

² Theoretical values of $\langle |L| \rangle$, $\langle L^2 \rangle$ for acentric reflections are 0.5, 0.375 respectively for untwinned datasets, and 0.333, 0.2 for perfectly twinned datasets.

5 Model quality [i](#)

5.1 Standard geometry [i](#)

Bond lengths and bond angles in the following residue types are not validated in this section: MG, G7X, ADP, CL

The Z score for a bond length (or angle) is the number of standard deviations the observed value is removed from the expected value. A bond length (or angle) with $|Z| > 5$ is considered an outlier worth inspection. RMSZ is the root-mean-square of all Z scores of the bond lengths (or angles).

Mol	Chain	Bond lengths		Bond angles	
		RMSZ	$\# Z > 5$	RMSZ	$\# Z > 5$
1	A	0.46	0/2512	0.69	0/3410
1	B	0.45	0/2406	0.69	0/3259
1	C	0.48	0/2377	0.73	0/3217
1	D	0.49	0/2389	0.73	1/3237 (0.0%)
All	All	0.47	0/9684	0.71	1/13123 (0.0%)

There are no bond length outliers.

All (1) bond angle outliers are listed below:

Mol	Chain	Res	Type	Atoms	Z	Observed(°)	Ideal(°)
1	D	341	LEU	CA-CB-CG	5.58	128.13	115.30

There are no chirality outliers.

There are no planarity outliers.

5.2 Too-close contacts [i](#)

In the following table, the Non-H and H(model) columns list the number of non-hydrogen atoms and hydrogen atoms in the chain respectively. The H(added) column lists the number of hydrogen atoms added and optimized by MolProbity. The Clashes column lists the number of clashes within the asymmetric unit, whereas Symm-Clashes lists symmetry related clashes.

Mol	Chain	Non-H	H(model)	H(added)	Clashes	Symm-Clashes
1	A	2475	0	2424	153	0
1	B	2374	0	2333	127	0
1	C	2347	0	2297	126	0
1	D	2357	0	2312	109	0
2	A	1	0	0	0	0
2	B	1	0	0	0	0

Continued on next page...

Continued from previous page...

Mol	Chain	Non-H	H(model)	H(added)	Clashes	Symm-Clashes
2	C	1	0	0	0	0
2	D	1	0	0	0	0
3	A	27	0	12	0	0
3	B	27	0	12	1	0
3	C	27	0	12	2	0
3	D	27	0	12	2	0
4	A	2	0	0	0	0
4	B	3	0	0	0	0
4	D	1	0	0	0	0
5	A	34	0	25	6	0
5	B	37	0	33	13	0
5	C	37	0	33	12	0
5	D	37	0	33	11	0
6	A	9	0	0	0	0
6	B	6	0	0	0	0
6	C	10	0	0	0	0
6	D	8	0	0	0	0
All	All	9849	0	9538	532	0

The all-atom clashscore is defined as the number of clashes found per 1000 atoms (including hydrogen atoms). The all-atom clashscore for this structure is 27.

All (532) close contacts within the same asymmetric unit are listed below, sorted by their clash magnitude.

Atom-1	Atom-2	Interatomic distance (Å)	Clash overlap (Å)
1:C:312:ARG:HG2	1:C:312:ARG:HH11	1.19	1.05
1:B:148:THR:HA	1:B:152:THR:HG22	1.43	1.00
1:C:50:VAL:HG12	1:C:66:TYR:HB2	1.43	0.99
1:A:143:ILE:HD13	1:A:243:ILE:HD11	1.45	0.98
1:A:86:VAL:HG21	1:A:135:ILE:HG12	1.45	0.98
5:B:2001:G7X:HBB2	5:B:2001:G7X:HAW	1.43	0.96
5:B:2001:G7X:HBB2	5:B:2001:G7X:CAW	1.96	0.95
1:B:127:TRP:HB2	5:B:2001:G7X:HAZ3	1.52	0.91
1:D:336:ILE:HG21	1:D:350:LEU:HD21	1.54	0.90
1:B:184:MET:HE1	1:B:319:ILE:HG12	1.54	0.88
1:C:187:ASP:HA	1:C:195:ILE:HG12	1.55	0.87
1:D:54:THR:HG21	1:D:64:LYS:HE3	1.57	0.87
5:D:2001:G7X:CAW	5:D:2001:G7X:HBB2	2.06	0.86
1:A:239:PHE:HE1	1:A:241:VAL:HG23	1.40	0.86
1:B:302:LEU:HB3	1:B:359:ILE:HG12	1.58	0.85
1:C:170:ASP:HB2	1:C:182:LEU:HD11	1.57	0.84

Continued on next page...

Continued from previous page...

Atom-1	Atom-2	Interatomic distance (Å)	Clash overlap (Å)
1:C:262:ASN:N	1:C:262:ASN:HD22	1.75	0.84
1:A:214:LEU:HD22	5:A:2001:G7X:HBFB	1.60	0.83
1:C:312:ARG:CG	1:C:312:ARG:HH11	1.91	0.83
1:D:173:ASN:HB2	1:D:200:GLU:HG3	1.59	0.82
1:C:243:ILE:HG22	1:C:245:MET:HG3	1.61	0.82
5:D:2001:G7X:HAW	5:D:2001:G7X:HBB2	1.63	0.81
1:A:158:VAL:HG12	1:A:241:VAL:HG22	1.64	0.80
1:C:49:GLU:HA	1:C:66:TYR:O	1.82	0.80
1:C:173:ASN:HB2	1:C:200:GLU:HG3	1.63	0.79
1:C:312:ARG:HG2	1:C:312:ARG:NH1	1.83	0.79
1:B:89:ILE:HD12	1:B:101:ILE:HD11	1.62	0.79
1:A:136:ILE:HG12	1:A:263:LEU:HD13	1.64	0.78
1:C:20:GLN:HB3	1:C:331:SER:OG	1.83	0.78
1:C:322:ASP:O	1:C:326:GLY:HA3	1.85	0.76
1:D:323:SER:HA	1:D:328:THR:HB	1.66	0.76
1:C:204:VAL:HG11	1:C:210:VAL:CG2	2.16	0.76
1:B:236:HIS:CD2	1:B:267:ALA:HB2	2.20	0.76
1:A:168:LEU:HD13	1:A:196:ILE:HD12	1.67	0.75
1:C:50:VAL:CG1	1:C:66:TYR:HB2	2.16	0.75
1:A:239:PHE:CE1	1:A:241:VAL:HG23	2.22	0.75
1:B:200:GLU:OE1	1:B:200:GLU:HA	1.87	0.75
1:A:92:GLU:HG3	1:A:329:ARG:HH11	1.51	0.74
5:B:2001:G7X:HBH	5:B:2001:G7X:CAX	2.17	0.74
1:D:134:GLY:O	1:D:138:ARG:HG3	1.87	0.74
1:D:236:HIS:ND1	1:D:316:LEU:HD22	2.03	0.74
1:B:127:TRP:CB	5:B:2001:G7X:HAZ3	2.17	0.73
1:D:184:MET:CE	1:D:194:VAL:HG21	2.18	0.73
1:A:166:GLU:HA	1:A:166:GLU:OE1	1.87	0.73
1:D:104:TYR:O	1:D:334:ALA:HA	1.88	0.72
1:C:204:VAL:HG11	1:C:210:VAL:HG23	1.72	0.72
1:D:127:TRP:HZ2	1:D:207:LYS:HB2	1.53	0.72
1:A:30:LEU:HD22	3:D:1003:ADP:C2	2.25	0.71
1:C:262:ASN:ND2	1:C:262:ASN:N	2.36	0.71
1:C:173:ASN:HD22	1:C:174:PRO:HD2	1.56	0.71
1:B:158:VAL:HG12	1:B:241:VAL:HG12	1.71	0.70
5:D:2001:G7X:HBFB	5:D:2001:G7X:CAX	2.21	0.70
1:B:144:PHE:HZ	1:B:204:VAL:HG12	1.55	0.70
5:C:2001:G7X:HBB2	5:C:2001:G7X:CAW	2.22	0.70
1:A:98:ASN:OD1	1:A:260:LYS:HB3	1.91	0.70
1:D:69:ASP:O	1:D:70:MET:HG3	1.91	0.70
1:B:178:VAL:HA	1:B:220:LYS:HE3	1.74	0.70

Continued on next page...

Continued from previous page...

Atom-1	Atom-2	Interatomic distance (Å)	Clash overlap (Å)
1:A:173:ASN:HB2	1:A:200:GLU:HG3	1.73	0.69
1:B:298:VAL:O	1:B:302:LEU:HG	1.92	0.69
1:B:172:LEU:HD11	1:B:213:ILE:HG22	1.74	0.69
1:D:168:LEU:CD1	1:D:315:LYS:HZ2	2.06	0.69
1:A:246:LYS:O	1:A:247:GLU:HB2	1.90	0.69
1:A:298:VAL:HG11	1:A:324:LEU:HD13	1.75	0.68
1:C:22:VAL:HG22	1:C:70:MET:HB2	1.76	0.68
1:A:21:VAL:HG11	1:A:353:ALA:HB1	1.75	0.68
1:D:106:GLN:HG3	1:D:345:GLU:HG2	1.75	0.68
1:D:81:VAL:O	1:D:85:VAL:HB	1.93	0.68
1:D:184:MET:HE1	1:D:194:VAL:HG21	1.76	0.67
1:A:185:PHE:CD1	1:A:197:LYS:HE3	2.29	0.67
1:A:344:GLU:HA	1:A:344:GLU:OE1	1.93	0.67
1:D:173:ASN:HB2	1:D:200:GLU:CG	2.25	0.66
1:C:206:ASN:C	1:C:206:ASN:OD1	2.33	0.66
1:C:323:SER:HA	1:C:328:THR:OG1	1.95	0.66
1:D:19:ILE:HG12	1:D:330:THR:HB	1.77	0.66
1:A:152:THR:HG23	1:A:152:THR:O	1.95	0.66
1:C:240:SER:HB3	1:C:260:LYS:HE3	1.78	0.66
1:A:46:VAL:HG23	1:A:47:ARG:N	2.11	0.66
1:A:291:SER:HA	1:A:314:SER:HB2	1.77	0.66
1:B:101:ILE:HD13	1:B:331:SER:HB2	1.78	0.66
1:A:92:GLU:HG3	1:A:329:ARG:NH1	2.11	0.65
1:D:171:LEU:CD2	1:D:221:ARG:HB2	2.26	0.65
1:A:187:ASP:HB3	1:A:190:ASN:HB3	1.77	0.65
1:C:102:PHE:CZ	1:C:320:LEU:HD13	2.32	0.65
1:A:239:PHE:HE1	1:A:241:VAL:CG2	2.09	0.65
1:B:115:MET:CE	1:B:263:LEU:HB3	2.26	0.65
1:A:209:GLU:O	1:A:213:ILE:HG13	1.96	0.65
1:A:236:HIS:CE1	1:A:267:ALA:H	2.15	0.65
1:C:110:GLY:HA2	3:C:1003:ADP:PA	2.37	0.65
1:A:214:LEU:CD2	5:A:2001:G7X:HBFB	2.27	0.65
1:D:238:VAL:HG13	1:D:264:VAL:HG22	1.79	0.64
1:D:293:LEU:HD11	1:D:297:ARG:NH2	2.12	0.64
1:A:214:LEU:HD22	5:A:2001:G7X:CBFB	2.26	0.64
1:B:241:VAL:CG2	1:B:261:LEU:HB3	2.27	0.64
1:B:159:SER:HA	1:B:172:LEU:HD23	1.78	0.64
1:D:49:GLU:HG2	1:D:67:THR:OG1	1.98	0.64
1:B:89:ILE:HD12	1:B:101:ILE:CD1	2.27	0.64
1:B:315:LYS:O	1:B:319:ILE:HG13	1.98	0.64
1:A:159:SER:HA	1:A:172:LEU:HD12	1.78	0.64

Continued on next page...

Continued from previous page...

Atom-1	Atom-2	Interatomic distance (Å)	Clash overlap (Å)
1:A:304:GLU:O	1:A:305:ARG:HB2	1.98	0.64
1:D:135:ILE:HG21	1:D:263:LEU:HD22	1.80	0.64
1:A:115:MET:HE2	1:A:135:ILE:HD12	1.80	0.63
1:C:262:ASN:H	1:C:262:ASN:HD22	1.46	0.63
1:B:239:PHE:CE1	1:B:241:VAL:HG13	2.34	0.63
1:B:38:HIS:CG	1:B:57:LEU:HB3	2.34	0.63
1:B:184:MET:HE1	1:B:194:VAL:HG21	1.81	0.63
1:D:160:LEU:HD21	5:D:2001:G7X:CLD	2.36	0.63
1:A:299:ILE:HG23	1:A:359:ILE:HD11	1.81	0.62
1:A:154:PHE:HA	1:A:244:HIS:O	1.98	0.62
1:A:291:SER:HA	1:A:314:SER:CB	2.29	0.62
1:A:141:HIS:HD2	1:A:207:LYS:HD3	1.63	0.62
1:A:118:GLU:O	1:A:132:LEU:HB2	2.00	0.62
1:D:218:ALA:HB2	5:D:2001:G7X:HAF	1.81	0.62
1:B:22:VAL:CG1	1:B:70:MET:HB2	2.29	0.62
1:B:184:MET:CE	1:B:194:VAL:HG21	2.30	0.61
1:A:92:GLU:HA	1:A:92:GLU:OE1	2.00	0.61
1:B:37:ALA:HB2	1:B:341:LEU:HD23	1.83	0.61
1:D:164:TYR:CD1	1:D:165:ASN:HB2	2.35	0.61
1:D:291:SER:HB3	1:D:316:LEU:CB	2.30	0.61
1:A:246:LYS:O	1:A:247:GLU:CB	2.48	0.61
1:C:106:GLN:O	1:C:109:THR:HG23	2.00	0.61
1:B:115:MET:HE1	1:B:263:LEU:HB3	1.80	0.61
1:B:244:HIS:ND1	1:B:258:ILE:HG12	2.16	0.61
1:A:159:SER:HB2	1:A:199:LEU:HD11	1.83	0.60
1:A:144:PHE:CZ	1:A:156:VAL:HG21	2.37	0.60
1:A:172:LEU:HD22	1:A:213:ILE:HG22	1.83	0.60
1:C:214:LEU:HD12	5:C:2001:G7X:HBF	1.84	0.60
1:C:330:THR:HB	1:C:361:ASN:HD21	1.66	0.60
1:A:160:LEU:HD12	1:A:238:VAL:O	2.02	0.60
1:B:126:THR:HB	1:B:128:GLU:OE1	2.01	0.60
1:C:303:VAL:CG2	1:C:359:ILE:HG13	2.33	0.59
1:A:184:MET:HB2	1:A:196:ILE:HD13	1.84	0.59
1:C:184:MET:HE1	1:C:315:LYS:HD2	1.84	0.59
1:C:134:GLY:O	1:C:137:PRO:HG2	2.03	0.59
1:D:236:HIS:CE1	1:D:316:LEU:HD22	2.38	0.59
1:C:241:VAL:O	1:C:260:LYS:HA	2.03	0.59
1:B:159:SER:HB3	1:B:201:GLU:HG2	1.83	0.58
1:B:144:PHE:CE1	1:B:206:ASN:HA	2.37	0.58
1:A:311:TYR:CD1	1:A:321:GLN:HG3	2.38	0.58
1:A:188:PRO:HD2	1:A:195:ILE:CD1	2.33	0.58

Continued on next page...

Continued from previous page...

Atom-1	Atom-2	Interatomic distance (Å)	Clash overlap (Å)
1:B:173:ASN:HB2	1:B:200:GLU:CG	2.33	0.58
1:D:89:ILE:HD11	1:D:331:SER:OG	2.04	0.58
1:D:54:THR:HG21	1:D:64:LYS:CE	2.32	0.58
1:D:127:TRP:CZ2	1:D:207:LYS:HB2	2.38	0.58
1:C:303:VAL:HG23	1:C:359:ILE:HG13	1.86	0.58
1:B:184:MET:CE	1:B:319:ILE:HG12	2.33	0.58
5:D:2001:G7X:HBD2	5:D:2001:G7X:OAV	2.03	0.58
1:A:156:VAL:HG23	1:A:204:VAL:HB	1.85	0.58
1:C:164:TYR:CE2	1:C:228:MET:HB3	2.39	0.58
1:C:239:PHE:HE1	1:C:241:VAL:HG22	1.68	0.57
1:B:22:VAL:HG12	1:B:70:MET:HB2	1.86	0.57
1:C:302:LEU:HB2	1:C:359:ILE:CD1	2.33	0.57
1:B:104:TYR:O	1:B:335:THR:N	2.35	0.57
1:D:54:THR:HG21	1:D:64:LYS:HG3	1.84	0.57
1:B:93:VAL:HG12	1:B:243:ILE:HD12	1.86	0.57
1:D:186:ASP:OD2	1:D:312:ARG:NH2	2.36	0.57
1:B:244:HIS:CE1	1:B:258:ILE:HG12	2.40	0.57
1:B:294:THR:HG22	1:B:317:THR:HG21	1.86	0.57
1:C:354:HIS:CE1	1:C:357:LYS:HE2	2.40	0.57
1:C:88:PRO:O	1:C:91:ASP:HB2	2.05	0.57
1:B:57:LEU:HD12	1:B:58:ALA:N	2.20	0.57
1:C:127:TRP:CD2	5:C:2001:G7X:HBK	2.40	0.57
1:D:184:MET:HE3	1:D:194:VAL:HG21	1.85	0.57
1:D:79:ILE:O	1:D:83:ARG:HG3	2.05	0.57
1:A:207:LYS:O	1:A:210:VAL:HB	2.04	0.56
1:A:104:TYR:O	1:A:335:THR:OG1	2.23	0.56
1:C:26:ARG:O	1:C:338:PRO:HD3	2.05	0.56
1:D:187:ASP:HA	1:D:195:ILE:HG13	1.87	0.56
1:D:78:GLN:NE2	1:D:113:PHE:CZ	2.73	0.56
1:C:204:VAL:HG11	1:C:210:VAL:HG22	1.88	0.56
1:C:239:PHE:HE1	1:C:241:VAL:CG2	2.18	0.56
1:A:185:PHE:CZ	1:A:195:ILE:HD12	2.40	0.56
1:A:204:VAL:HG22	1:A:213:ILE:HD12	1.88	0.56
1:A:28:PHE:CD2	1:A:33:ARG:CZ	2.89	0.56
1:B:166:GLU:OE2	1:B:314:SER:HB2	2.05	0.56
1:D:162:GLU:HG3	1:D:171:LEU:HD13	1.88	0.56
1:C:40:ILE:HD12	1:C:343:LEU:HD13	1.87	0.56
1:A:30:LEU:HD22	3:D:1003:ADP:N3	2.21	0.56
1:B:210:VAL:CG1	5:B:2001:G7X:HBI	2.37	0.55
1:B:173:ASN:O	1:B:220:LYS:NZ	2.38	0.55
1:A:327:ARG:O	1:A:363:PRO:HA	2.07	0.55

Continued on next page...

Continued from previous page...

Atom-1	Atom-2	Interatomic distance (Å)	Clash overlap (Å)
1:D:209:GLU:O	1:D:212:GLN:HG2	2.06	0.55
1:B:38:HIS:CD2	1:B:57:LEU:HB3	2.41	0.55
1:C:340:SER:O	1:C:343:LEU:HB3	2.06	0.55
1:C:173:ASN:ND2	1:C:174:PRO:HD2	2.21	0.55
1:B:172:LEU:HD11	1:B:213:ILE:CG2	2.34	0.55
1:A:304:GLU:HA	1:A:304:GLU:OE1	2.06	0.55
1:C:106:GLN:HA	1:C:270:GLU:OE1	2.07	0.55
1:A:98:ASN:C	1:A:328:THR:HG23	2.27	0.55
1:D:164:TYR:CE1	1:D:165:ASN:HB2	2.41	0.55
1:B:93:VAL:CG1	1:B:243:ILE:HD12	2.37	0.55
1:D:160:LEU:CD2	5:D:2001:G7X:CLD	2.92	0.55
1:D:166:GLU:OE1	1:D:291:SER:OG	2.25	0.55
1:C:19:ILE:CD1	1:C:359:ILE:HB	2.37	0.55
1:D:98:ASN:HA	1:D:260:LYS:O	2.06	0.55
1:B:170:ASP:HB2	1:B:182:LEU:HD11	1.88	0.55
1:D:28:PHE:CE1	1:D:32:GLU:HB3	2.42	0.55
5:C:2001:G7X:HBD2	5:C:2001:G7X:OAV	2.07	0.55
1:A:185:PHE:CE1	1:A:195:ILE:HB	2.42	0.55
1:C:181:ARG:NH1	1:C:181:ARG:HG3	2.23	0.54
1:D:315:LYS:O	1:D:319:ILE:HG13	2.07	0.54
1:C:136:ILE:N	1:C:137:PRO:HD2	2.23	0.54
1:D:141:HIS:CD2	1:D:207:LYS:HD3	2.43	0.54
5:A:2001:G7X:HBB2	5:A:2001:G7X:CAN	2.37	0.54
1:D:100:THR:HG23	1:D:262:ASN:HB2	1.89	0.54
1:A:98:ASN:O	1:A:328:THR:HG23	2.08	0.54
1:D:82:TYR:CD1	1:D:86:VAL:HB	2.43	0.54
1:D:159:SER:HA	1:D:172:LEU:HD12	1.90	0.54
1:A:19:ILE:HD12	1:A:359:ILE:HB	1.90	0.54
1:C:160:LEU:HD12	1:C:238:VAL:O	2.07	0.54
1:C:27:PRO:HG3	1:C:74:ALA:HB1	1.89	0.54
1:B:28:PHE:CE1	1:B:32:GLU:HB3	2.44	0.53
1:B:178:VAL:HA	1:B:220:LYS:CE	2.37	0.53
1:A:97:TYR:CE1	1:A:365:VAL:HB	2.44	0.53
1:B:239:PHE:HE1	1:B:241:VAL:HG13	1.73	0.53
1:C:22:VAL:HG11	1:C:72:PHE:HE2	1.74	0.53
1:A:346:THR:O	1:A:350:LEU:HG	2.09	0.53
1:C:127:TRP:CE3	5:C:2001:G7X:HBK	2.44	0.53
1:C:214:LEU:HD12	5:C:2001:G7X:CBF	2.38	0.53
1:A:21:VAL:O	1:A:69:ASP:HB2	2.09	0.53
1:A:212:GLN:HG3	1:A:213:ILE:N	2.24	0.53
1:B:82:TYR:CD1	1:B:86:VAL:HB	2.44	0.53

Continued on next page...

Continued from previous page...

Atom-1	Atom-2	Interatomic distance (Å)	Clash overlap (Å)
1:B:241:VAL:HG23	1:B:261:LEU:HB3	1.90	0.52
1:C:299:ILE:HA	1:C:359:ILE:HD11	1.90	0.52
1:B:158:VAL:HG23	1:B:172:LEU:HD21	1.90	0.52
1:B:243:ILE:O	1:B:258:ILE:HA	2.08	0.52
1:C:181:ARG:HH11	1:C:181:ARG:HG3	1.73	0.52
1:D:40:ILE:HD11	1:D:343:LEU:HA	1.92	0.52
1:A:95:MET:N	1:A:95:MET:SD	2.83	0.52
1:A:303:VAL:HG21	1:A:355:ARG:O	2.09	0.52
1:B:353:ALA:O	1:B:356:ALA:HB3	2.08	0.52
1:A:29:ASN:OD1	1:A:32:GLU:N	2.32	0.52
5:C:2001:G7X:HAW	5:C:2001:G7X:HBB2	1.91	0.52
1:C:97:TYR:CE2	1:C:365:VAL:N	2.77	0.52
1:B:40:ILE:HG13	1:B:41:VAL:HG23	1.92	0.52
1:C:291:SER:HA	1:C:314:SER:HB2	1.92	0.52
1:A:161:LEU:HD13	1:A:168:LEU:HD22	1.92	0.52
1:A:35:ALA:O	1:A:36:SER:HB2	2.10	0.52
1:B:256:VAL:O	1:B:256:VAL:HG13	2.10	0.52
1:D:168:LEU:HD12	1:D:168:LEU:N	2.24	0.52
1:C:72:PHE:HB3	1:C:76:THR:OG1	2.10	0.52
1:B:236:HIS:N	1:B:236:HIS:CD2	2.78	0.51
1:B:138:ARG:HG2	1:B:138:ARG:NH1	2.25	0.51
5:C:2001:G7X:HAU1	5:C:2001:G7X:NAH	2.26	0.51
1:A:172:LEU:HB3	1:A:202:ILE:HD12	1.92	0.51
1:C:237:SER:HB3	1:C:265:ASP:HB3	1.90	0.51
1:D:361:ASN:O	1:D:363:PRO:HD3	2.11	0.51
1:B:209:GLU:O	1:B:213:ILE:HG13	2.10	0.51
1:D:171:LEU:HD21	1:D:221:ARG:HB2	1.92	0.51
1:B:166:GLU:HA	1:B:166:GLU:OE1	2.11	0.51
1:C:50:VAL:HG11	1:C:350:LEU:HD13	1.93	0.51
1:D:141:HIS:HD2	1:D:207:LYS:HD3	1.76	0.51
1:A:126:THR:OG1	1:A:129:GLU:HG2	2.11	0.51
1:D:54:THR:CG2	1:D:64:LYS:HG3	2.40	0.51
1:B:311:TYR:HA	1:B:317:THR:HB	1.93	0.51
1:C:29:ASN:OD1	1:C:32:GLU:HG3	2.11	0.51
1:C:136:ILE:HG12	1:C:263:LEU:HD13	1.92	0.51
1:A:119:ARG:HH22	1:A:211:TYR:HE2	1.59	0.51
1:A:310:PRO:HB2	1:A:313:GLU:HG3	1.93	0.51
1:C:202:ILE:HG21	1:C:213:ILE:HD11	1.92	0.51
1:A:209:GLU:O	1:A:212:GLN:HG2	2.10	0.51
1:C:19:ILE:HD11	1:C:359:ILE:HB	1.92	0.51
1:D:168:LEU:CD1	1:D:315:LYS:NZ	2.73	0.50

Continued on next page...

Continued from previous page...

Atom-1	Atom-2	Interatomic distance (Å)	Clash overlap (Å)
1:D:30:LEU:O	1:D:34:LYS:HG3	2.11	0.50
1:B:237:SER:OG	1:B:265:ASP:HB3	2.11	0.50
1:C:210:VAL:O	1:C:214:LEU:HG	2.11	0.50
1:B:20:GLN:HA	1:B:69:ASP:OD2	2.11	0.50
1:A:237:SER:HB3	1:A:265:ASP:HB3	1.93	0.50
1:A:315:LYS:O	1:A:319:ILE:HG13	2.11	0.50
1:C:164:TYR:CD2	1:C:228:MET:SD	3.05	0.50
1:C:118:GLU:O	1:C:132:LEU:HB2	2.10	0.50
1:B:211:TYR:CE1	5:B:2001:G7X:HAA2	2.47	0.50
1:A:147:LEU:CD2	1:A:150:ASN:HD22	2.25	0.50
1:A:294:THR:HB	1:A:314:SER:OG	2.12	0.50
1:A:47:ARG:HD3	1:A:49:GLU:OE2	2.12	0.50
1:B:127:TRP:CG	5:B:2001:G7X:HBK	2.47	0.50
1:A:168:LEU:CD1	1:A:196:ILE:HD12	2.39	0.50
1:A:185:PHE:CE1	1:A:197:LYS:HE3	2.47	0.50
1:A:118:GLU:CD	1:D:34:LYS:HZ3	2.15	0.50
1:D:343:LEU:O	1:D:347:LEU:HG	2.12	0.50
1:C:311:TYR:CD1	1:C:311:TYR:N	2.78	0.50
1:C:133:ALA:O	1:C:138:ARG:NE	2.39	0.50
1:D:166:GLU:HA	1:D:166:GLU:OE1	2.11	0.49
1:B:38:HIS:O	1:B:340:SER:HB3	2.12	0.49
1:D:239:PHE:CD1	1:D:239:PHE:C	2.86	0.49
1:B:211:TYR:O	1:B:215:GLU:HB3	2.11	0.49
1:C:75:SER:O	1:C:77:LYS:HE2	2.13	0.49
1:D:291:SER:HB3	1:D:316:LEU:HB2	1.93	0.49
1:C:98:ASN:O	1:C:328:THR:HB	2.12	0.49
1:A:26:ARG:O	1:A:26:ARG:HG3	2.12	0.49
1:A:143:ILE:CD1	1:A:243:ILE:HD11	2.30	0.49
1:A:158:VAL:CG1	1:A:241:VAL:HG22	2.40	0.49
1:B:294:THR:OG1	1:B:314:SER:HB3	2.13	0.49
1:C:311:TYR:HD1	1:C:311:TYR:H	1.56	0.49
1:A:140:LEU:HD13	1:A:210:VAL:HG13	1.93	0.49
1:A:119:ARG:NH2	1:A:211:TYR:HE2	2.11	0.49
1:B:343:LEU:O	1:B:343:LEU:HD12	2.12	0.49
1:A:37:ALA:CB	1:A:339:ALA:HB1	2.43	0.49
1:C:161:LEU:HG	1:C:238:VAL:HB	1.94	0.49
1:C:104:TYR:CD1	1:C:104:TYR:C	2.86	0.49
1:B:236:HIS:NE2	1:B:267:ALA:HB2	2.27	0.48
1:C:97:TYR:CE1	1:C:365:VAL:HB	2.48	0.48
1:B:113:PHE:CD2	3:B:1003:ADP:N7	2.81	0.48
1:C:51:SER:HB3	1:C:63:ARG:NH1	2.28	0.48

Continued on next page...

Continued from previous page...

Atom-1	Atom-2	Interatomic distance (Å)	Clash overlap (Å)
1:B:207:LYS:O	1:B:210:VAL:HB	2.13	0.48
1:A:104:TYR:HE1	1:A:349:THR:HA	1.78	0.48
1:B:323:SER:HA	1:B:328:THR:HB	1.93	0.48
1:D:93:VAL:HG21	1:D:261:LEU:HB2	1.94	0.48
1:B:243:ILE:HG22	1:B:245:MET:HG3	1.93	0.48
1:D:168:LEU:HD13	1:D:315:LYS:NZ	2.28	0.48
1:A:46:VAL:HG23	1:A:47:ARG:H	1.76	0.48
1:C:48:LYS:HB3	1:C:68:PHE:O	2.13	0.48
1:D:111:LYS:HE2	1:D:111:LYS:HB2	1.46	0.48
1:A:22:VAL:HG23	1:A:22:VAL:O	2.13	0.48
1:D:66:TYR:OH	1:D:351:GLU:HG2	2.12	0.48
1:A:214:LEU:HD23	5:A:2001:G7X:CAR	2.43	0.48
1:C:127:TRP:CE3	5:C:2001:G7X:CBK	2.95	0.48
1:B:163:ILE:HD12	1:B:316:LEU:HB2	1.95	0.48
1:B:309:VAL:HB	1:B:311:TYR:CE2	2.48	0.48
1:D:291:SER:HB3	1:D:316:LEU:HB3	1.95	0.48
1:A:46:VAL:CG2	1:A:47:ARG:N	2.76	0.48
1:B:153:GLU:OE1	1:B:153:GLU:HA	2.14	0.48
1:D:115:MET:HG3	1:D:265:ASP:HB2	1.94	0.48
1:C:181:ARG:HH11	1:C:181:ARG:CG	2.26	0.48
1:C:202:ILE:HG21	1:C:213:ILE:CD1	2.43	0.48
1:D:127:TRP:CE3	1:D:127:TRP:C	2.88	0.48
1:A:188:PRO:HD2	1:A:195:ILE:HD11	1.95	0.48
1:D:288:ILE:HG22	1:D:289:ASN:N	2.28	0.48
1:C:126:THR:O	1:C:129:GLU:HG2	2.13	0.47
1:C:115:MET:O	1:C:136:ILE:HG13	2.14	0.47
1:B:54:THR:HG21	1:B:64:LYS:HD2	1.97	0.47
1:B:298:VAL:HG21	1:B:317:THR:CG2	2.44	0.47
1:B:169:PHE:HE1	1:B:179:SER:O	1.96	0.47
1:D:144:PHE:HE2	1:D:205:HIS:O	1.97	0.47
5:C:2001:G7X:CAU	5:C:2001:G7X:NAH	2.78	0.47
1:C:312:ARG:CG	1:C:312:ARG:NH1	2.58	0.47
1:C:76:THR:CG2	1:C:81:VAL:HG23	2.45	0.47
1:A:144:PHE:HZ	1:A:156:VAL:HG21	1.78	0.47
5:B:2001:G7X:CAW	5:B:2001:G7X:HAJ	2.44	0.47
1:D:24:ARG:O	1:D:336:ILE:HG12	2.15	0.47
1:D:346:THR:O	1:D:350:LEU:HG	2.15	0.47
5:D:2001:G7X:CAL	5:D:2001:G7X:HBD2	2.45	0.47
1:A:33:ARG:HG3	1:D:27:PRO:CB	2.45	0.47
1:D:82:TYR:CE2	1:D:142:GLN:HG3	2.49	0.47
1:A:173:ASN:CB	1:A:200:GLU:HG3	2.43	0.47

Continued on next page...

Continued from previous page...

Atom-1	Atom-2	Interatomic distance (Å)	Clash overlap (Å)
1:B:173:ASN:HB2	1:B:200:GLU:HB2	1.96	0.47
1:A:17:LYS:O	1:A:17:LYS:CG	2.62	0.47
1:A:304:GLU:HB3	1:A:306:THR:HG23	1.97	0.47
1:D:144:PHE:CE2	1:D:206:ASN:HA	2.50	0.47
1:A:51:SER:HB3	1:A:63:ARG:HE	1.79	0.47
1:A:136:ILE:N	1:A:137:PRO:HD2	2.30	0.46
5:B:2001:G7X:CAL	5:B:2001:G7X:HBD1	2.45	0.46
1:B:299:ILE:O	1:B:302:LEU:HB2	2.15	0.46
1:D:271:ASN:O	1:D:288:ILE:HG21	2.15	0.46
1:B:136:ILE:HD13	5:B:2001:G7X:HAQ	1.97	0.46
1:A:20:GLN:O	1:A:331:SER:HA	2.15	0.46
1:B:128:GLU:HG2	1:B:207:LYS:NZ	2.30	0.46
1:C:146:LYS:O	1:C:150:ASN:HB2	2.16	0.46
1:D:33:ARG:HD3	1:D:33:ARG:HA	1.61	0.46
1:B:312:ARG:HA	1:B:318:ARG:HG2	1.97	0.46
1:C:157:LYS:HE3	1:C:242:THR:HB	1.97	0.46
1:C:302:LEU:HB2	1:C:359:ILE:HG12	1.97	0.46
1:C:311:TYR:CD2	1:C:321:GLN:HG3	2.51	0.46
1:A:164:TYR:CE2	1:A:228:MET:HG2	2.50	0.46
1:A:102:PHE:HE1	1:A:320:LEU:HD13	1.81	0.46
1:A:320:LEU:O	1:A:323:SER:HB2	2.16	0.46
1:A:327:ARG:HA	1:A:362:LYS:O	2.16	0.46
1:A:53:ARG:HD3	1:A:63:ARG:HH12	1.81	0.46
1:A:270:GLU:HG2	1:A:271:ASN:N	2.30	0.46
1:B:102:PHE:HZ	1:B:320:LEU:HD13	1.80	0.46
1:B:311:TYR:CD1	1:B:321:GLN:HG3	2.50	0.46
1:A:214:LEU:HD23	5:A:2001:G7X:CAS	2.46	0.46
1:D:361:ASN:C	1:D:363:PRO:HD3	2.36	0.46
1:D:90:LEU:HD11	1:D:143:ILE:HG12	1.98	0.46
1:A:114:THR:HG22	1:A:135:ILE:HD12	1.97	0.46
1:D:69:ASP:C	1:D:70:MET:HG3	2.35	0.46
1:A:156:VAL:CG2	1:A:204:VAL:HB	2.45	0.46
1:C:157:LYS:HB2	1:C:157:LYS:HE3	1.71	0.45
1:A:188:PRO:HD2	1:A:195:ILE:HD12	1.97	0.45
1:B:26:ARG:NH2	1:B:108:GLY:O	2.44	0.45
1:A:104:TYR:CD1	1:A:104:TYR:C	2.90	0.45
1:C:19:ILE:HD11	1:C:359:ILE:CG2	2.47	0.45
1:A:347:LEU:HD23	1:A:347:LEU:HA	1.63	0.45
1:B:127:TRP:CD2	5:B:2001:G7X:HBK	2.52	0.45
1:A:161:LEU:HD12	1:A:161:LEU:O	2.16	0.45
1:B:144:PHE:CZ	1:B:204:VAL:HG12	2.43	0.45

Continued on next page...

Continued from previous page...

Atom-1	Atom-2	Interatomic distance (Å)	Clash overlap (Å)
1:A:270:GLU:HA	1:A:345:GLU:OE1	2.16	0.45
1:B:102:PHE:CZ	1:B:320:LEU:HD13	2.52	0.45
1:B:162:GLU:HA	1:B:236:HIS:O	2.17	0.45
1:C:243:ILE:O	1:C:258:ILE:HA	2.17	0.45
1:B:345:GLU:HA	1:B:345:GLU:OE1	2.17	0.45
1:D:241:VAL:HG13	1:D:241:VAL:O	2.16	0.45
1:B:295:LEU:HD11	1:B:299:ILE:HD11	1.99	0.45
1:C:170:ASP:HB2	1:C:182:LEU:CD1	2.37	0.45
1:D:168:LEU:N	1:D:168:LEU:CD1	2.80	0.45
1:A:303:VAL:HG22	1:A:358:ASN:HB2	1.98	0.45
1:D:139:THR:O	1:D:143:ILE:HG13	2.17	0.45
1:B:92:GLU:O	1:B:97:TYR:HB2	2.17	0.45
1:B:138:ARG:HH11	1:B:138:ARG:HG2	1.81	0.44
1:A:115:MET:O	1:A:136:ILE:HG13	2.17	0.44
1:C:244:HIS:CE1	1:C:258:ILE:CD1	3.00	0.44
1:D:52:VAL:HG21	1:D:350:LEU:HD12	1.98	0.44
1:B:173:ASN:HB2	1:B:200:GLU:CB	2.48	0.44
1:A:304:GLU:O	1:A:305:ARG:CB	2.63	0.44
5:B:2001:G7X:HBC1	5:B:2001:G7X:NAH	2.33	0.44
1:C:127:TRP:HB2	5:C:2001:G7X:HAZ3	1.99	0.44
1:A:207:LYS:HG3	1:A:208:ASP:N	2.32	0.44
1:A:89:ILE:HD11	1:A:331:SER:OG	2.17	0.44
1:D:290:GLN:HG3	1:D:314:SER:HB3	1.99	0.44
1:A:100:THR:HB	1:A:330:THR:HG23	1.99	0.44
1:B:347:LEU:HA	1:B:347:LEU:HD23	1.72	0.44
1:C:173:ASN:O	1:C:220:LYS:NZ	2.43	0.44
1:A:79:ILE:HG23	1:A:80:ASP:N	2.33	0.44
1:C:310:PRO:HB2	1:C:313:GLU:CD	2.37	0.44
1:D:336:ILE:HG21	1:D:350:LEU:CD2	2.37	0.44
1:A:44:ASP:OD1	1:A:46:VAL:HG22	2.17	0.44
1:A:272:ILE:CD1	1:A:292:LEU:HG	2.48	0.44
1:C:120:SER:HB2	1:C:125:TYR:HD2	1.82	0.44
1:B:141:HIS:HD2	1:B:207:LYS:HD2	1.83	0.44
1:B:173:ASN:HB2	1:B:200:GLU:HG3	1.99	0.44
1:D:128:GLU:HG2	1:D:141:HIS:CD2	2.53	0.44
1:C:110:GLY:HA2	3:C:1003:ADP:O3A	2.17	0.44
1:C:337:SER:OG	1:C:338:PRO:HD2	2.18	0.44
1:A:273:GLY:O	1:A:274:ARG:C	2.56	0.44
1:C:292:LEU:O	1:C:295:LEU:HB3	2.17	0.44
1:C:157:LYS:HE2	1:C:244:HIS:CD2	2.52	0.43
1:D:100:THR:OG1	1:D:328:THR:HG21	2.18	0.43

Continued on next page...

Continued from previous page...

Atom-1	Atom-2	Interatomic distance (Å)	Clash overlap (Å)
1:A:209:GLU:HG2	1:A:213:ILE:HD11	2.00	0.43
1:A:32:GLU:OE2	1:A:337:SER:OG	2.24	0.43
1:B:220:LYS:O	1:B:223:THR:HB	2.18	0.43
1:B:239:PHE:CD1	1:B:263:LEU:HD12	2.53	0.43
1:A:141:HIS:CD2	1:A:207:LYS:HD3	2.49	0.43
1:C:168:LEU:HD11	1:C:315:LYS:HB3	2.00	0.43
1:D:160:LEU:HD12	1:D:238:VAL:O	2.18	0.43
1:B:161:LEU:C	1:B:162:GLU:HG2	2.39	0.43
1:D:184:MET:HE3	1:D:194:VAL:CG2	2.49	0.43
1:C:168:LEU:HD21	1:C:319:ILE:HD11	2.00	0.43
1:C:40:ILE:CD1	1:C:343:LEU:HB2	2.49	0.43
1:B:297:ARG:HB3	1:B:310:PRO:HG3	2.00	0.43
1:B:140:LEU:O	1:B:143:ILE:HB	2.19	0.43
1:C:237:SER:O	1:C:264:VAL:HA	2.18	0.43
1:D:257:LYS:HB2	1:D:257:LYS:HE2	1.65	0.43
1:D:43:CYS:HB3	1:D:71:VAL:HG12	2.00	0.43
1:B:158:VAL:HA	1:B:240:SER:O	2.19	0.43
1:A:188:PRO:O	1:A:189:ARG:CB	2.66	0.43
1:C:162:GLU:HG3	1:C:171:LEU:CD2	2.49	0.43
1:C:243:ILE:HG22	1:C:245:MET:CG	2.39	0.43
5:C:2001:G7X:CBD	5:C:2001:G7X:OAV	2.66	0.43
1:A:314:SER:O	1:A:315:LYS:C	2.57	0.43
1:A:187:ASP:OD1	1:A:188:PRO:N	2.52	0.43
1:A:44:ASP:OD2	1:A:47:ARG:HB2	2.18	0.43
1:D:206:ASN:O	1:D:209:GLU:HB3	2.19	0.43
1:B:352:TYR:O	1:B:356:ALA:HB2	2.19	0.43
1:A:170:ASP:HB2	1:A:182:LEU:HD11	2.00	0.43
1:D:315:LYS:HZ2	1:D:315:LYS:HG3	1.66	0.43
1:B:102:PHE:HE1	1:B:264:VAL:HG11	1.83	0.43
1:C:56:GLY:O	1:C:57:LEU:HB2	2.19	0.43
1:B:210:VAL:HG13	1:B:214:LEU:HD12	2.01	0.43
1:D:160:LEU:HB3	1:D:172:LEU:HG	2.01	0.43
1:B:90:LEU:O	1:B:94:ILE:HG12	2.19	0.43
5:D:2001:G7X:CBD	5:D:2001:G7X:OAV	2.67	0.42
1:A:303:VAL:HG23	1:A:359:ILE:HG13	2.00	0.42
1:A:114:THR:HG22	1:A:115:MET:HE2	2.01	0.42
1:C:330:THR:HB	1:C:361:ASN:ND2	2.31	0.42
1:C:40:ILE:HG13	1:C:41:VAL:HG23	2.01	0.42
1:A:138:ARG:HH11	1:A:138:ARG:HG2	1.82	0.42
1:A:224:ALA:HA	1:A:227:LEU:HB2	2.01	0.42
1:B:116:GLU:O	1:B:134:GLY:N	2.51	0.42

Continued on next page...

Continued from previous page...

Atom-1	Atom-2	Interatomic distance (Å)	Clash overlap (Å)
1:B:298:VAL:HG21	1:B:317:THR:HG21	2.01	0.42
1:C:310:PRO:HB2	1:C:313:GLU:HG3	2.01	0.42
1:C:147:LEU:HA	1:C:147:LEU:HD23	1.69	0.42
1:C:218:ALA:O	1:C:222:THR:OG1	2.33	0.42
1:A:136:ILE:HG12	1:A:263:LEU:CD1	2.43	0.42
1:D:312:ARG:HA	1:D:318:ARG:HG2	2.01	0.42
1:A:23:VAL:HG11	1:A:50:VAL:HG21	2.01	0.42
1:C:188:PRO:HD3	1:C:195:ILE:HG13	2.01	0.42
1:B:166:GLU:OE1	1:B:166:GLU:CA	2.67	0.42
1:C:303:VAL:HG22	1:C:359:ILE:HG13	2.01	0.42
1:D:78:GLN:NE2	1:D:113:PHE:CE2	2.87	0.42
5:D:2001:G7X:HAU1	5:D:2001:G7X:NAH	2.34	0.42
1:A:46:VAL:CG2	1:A:47:ARG:H	2.32	0.42
1:A:173:ASN:HB2	1:A:200:GLU:CG	2.46	0.42
1:B:148:THR:HA	1:B:152:THR:CG2	2.32	0.42
1:A:158:VAL:O	1:A:158:VAL:HG23	2.19	0.42
1:B:161:LEU:HA	1:B:169:PHE:O	2.20	0.42
1:D:158:VAL:HG23	1:D:158:VAL:O	2.19	0.42
1:C:174:PRO:O	1:C:177:ASP:OD1	2.38	0.42
1:B:173:ASN:HA	1:B:174:PRO:HD3	1.83	0.42
1:C:66:TYR:OH	1:C:351:GLU:OE2	2.34	0.41
1:A:30:LEU:HA	1:A:30:LEU:HD23	1.87	0.41
1:C:160:LEU:HB3	1:C:172:LEU:HG	2.01	0.41
1:B:51:SER:HA	1:B:64:LYS:O	2.20	0.41
1:A:178:VAL:HG21	1:A:223:THR:HG21	2.01	0.41
1:B:302:LEU:HD21	1:B:311:TYR:OH	2.21	0.41
1:D:261:LEU:HD12	1:D:262:ASN:N	2.35	0.41
1:D:112:THR:OG1	1:D:265:ASP:OD2	2.37	0.41
1:C:119:ARG:HA	1:C:130:ASP:OD2	2.20	0.41
1:C:40:ILE:HD13	1:C:343:LEU:HB2	2.02	0.41
1:A:294:THR:O	1:A:298:VAL:HG23	2.20	0.41
1:D:126:THR:HB	1:D:128:GLU:OE2	2.20	0.41
1:C:69:ASP:O	1:C:70:MET:HG2	2.20	0.41
1:A:316:LEU:HG	1:A:320:LEU:HD12	2.02	0.41
1:B:102:PHE:CE1	1:B:264:VAL:HG11	2.55	0.41
1:C:244:HIS:CE1	1:C:258:ILE:HD13	2.56	0.41
1:A:163:ILE:HG12	1:A:168:LEU:HD23	2.03	0.41
1:A:118:GLU:OE1	1:D:34:LYS:NZ	2.54	0.41
1:D:99:CYS:HA	1:D:328:THR:HG23	2.02	0.41
1:B:171:LEU:HD13	1:B:220:LYS:HB3	2.02	0.41
1:B:116:GLU:HG2	1:B:136:ILE:HD12	2.02	0.41

Continued on next page...

Continued from previous page...

Atom-1	Atom-2	Interatomic distance (Å)	Clash overlap (Å)
1:D:187:ASP:OD1	1:D:189:ARG:HB2	2.21	0.41
1:B:265:ASP:C	1:B:265:ASP:OD1	2.59	0.41
1:A:90:LEU:HD11	1:A:143:ILE:HG12	2.03	0.41
1:D:171:LEU:HD22	1:D:221:ARG:HB2	2.01	0.41
1:B:47:ARG:O	1:B:49:GLU:HG3	2.20	0.41
1:A:163:ILE:HG12	1:A:168:LEU:CD2	2.50	0.40
1:D:293:LEU:HD11	1:D:297:ARG:HH21	1.83	0.40
1:B:90:LEU:HA	1:B:90:LEU:HD12	1.82	0.40
1:C:127:TRP:CZ2	1:C:207:LYS:HB2	2.57	0.40
1:A:171:LEU:HD21	1:A:221:ARG:HG3	2.03	0.40
1:B:98:ASN:O	1:B:99:CYS:SG	2.77	0.40
1:A:92:GLU:CG	1:A:329:ARG:NH1	2.82	0.40
1:A:303:VAL:CG2	1:A:355:ARG:O	2.70	0.40
1:B:22:VAL:HG11	1:B:70:MET:HB2	2.01	0.40
1:C:19:ILE:HD12	1:C:359:ILE:HB	2.03	0.40
1:C:291:SER:HA	1:C:314:SER:CB	2.51	0.40
1:B:147:LEU:HD23	1:B:147:LEU:HA	1.97	0.40
1:D:302:LEU:HD21	1:D:311:TYR:OH	2.22	0.40
5:D:2001:G7X:HBf	5:D:2001:G7X:CAY	2.51	0.40
1:D:126:THR:OG1	1:D:129:GLU:HG2	2.21	0.40
1:D:101:ILE:HA	1:D:331:SER:O	2.22	0.40
1:B:346:THR:O	1:B:350:LEU:HG	2.22	0.40
1:A:34:LYS:HB2	1:A:34:LYS:HE2	1.88	0.40
1:C:205:HIS:O	1:D:46:VAL:HG22	2.21	0.40

There are no symmetry-related clashes.

5.3 Torsion angles [i](#)

5.3.1 Protein backbone [i](#)

In the following table, the Percentiles column shows the percent Ramachandran outliers of the chain as a percentile score with respect to all X-ray entries followed by that with respect to entries of similar resolution.

The Analysed column shows the number of residues for which the backbone conformation was analysed, and the total number of residues.

Mol	Chain	Analysed	Favoured	Allowed	Outliers	Percentiles
1	A	317/370 (86%)	309 (98%)	8 (2%)	0	100 100

Continued on next page...

Continued from previous page...

Mol	Chain	Analysed	Favoured	Allowed	Outliers	Percentiles	
1	B	302/370 (82%)	295 (98%)	7 (2%)	0	100	100
1	C	297/370 (80%)	294 (99%)	3 (1%)	0	100	100
1	D	297/370 (80%)	287 (97%)	10 (3%)	0	100	100
All	All	1213/1480 (82%)	1185 (98%)	28 (2%)	0	100	100

There are no Ramachandran outliers to report.

5.3.2 Protein sidechains ⓘ

In the following table, the Percentiles column shows the percent sidechain outliers of the chain as a percentile score with respect to all X-ray entries followed by that with respect to entries of similar resolution.

The Analysed column shows the number of residues for which the sidechain conformation was analysed, and the total number of residues.

Mol	Chain	Analysed	Rotameric	Outliers	Percentiles	
1	A	268/323 (83%)	263 (98%)	5 (2%)	65	86
1	B	257/323 (80%)	241 (94%)	16 (6%)	23	45
1	C	252/323 (78%)	243 (96%)	9 (4%)	42	71
1	D	255/323 (79%)	251 (98%)	4 (2%)	70	89
All	All	1032/1292 (80%)	998 (97%)	34 (3%)	45	73

All (34) residues with a non-rotameric sidechain are listed below:

Mol	Chain	Res	Type
1	A	28	PHE
1	A	69	ASP
1	A	95	MET
1	A	182	LEU
1	A	221	ARG
1	B	19	ILE
1	B	24	ARG
1	B	26	ARG
1	B	48	LYS
1	B	63	ARG
1	B	79	ILE
1	B	166	GLU
1	B	171	LEU

Continued on next page...

Continued from previous page...

Mol	Chain	Res	Type
1	B	172	LEU
1	B	181	ARG
1	B	182	LEU
1	B	207	LYS
1	B	234	ARG
1	B	236	HIS
1	B	241	VAL
1	B	315	LYS
1	C	20	GLN
1	C	26	ARG
1	C	104	TYR
1	C	145	GLU
1	C	172	LEU
1	C	181	ARG
1	C	206	ASN
1	C	262	ASN
1	C	312	ARG
1	D	28	PHE
1	D	207	LYS
1	D	208	ASP
1	D	257	LYS

Some sidechains can be flipped to improve hydrogen bonding and reduce clashes. All (20) such sidechains are listed below:

Mol	Chain	Res	Type
1	A	141	HIS
1	A	150	ASN
1	A	212	GLN
1	A	262	ASN
1	A	321	GLN
1	B	141	HIS
1	B	205	HIS
1	B	229	ASN
1	B	236	HIS
1	B	262	ASN
1	B	321	GLN
1	C	142	GLN
1	C	205	HIS
1	C	244	HIS
1	C	262	ASN
1	C	321	GLN
1	C	354	HIS

Continued on next page...

Continued from previous page...

Mol	Chain	Res	Type
1	C	361	ASN
1	D	229	ASN
1	D	321	GLN

5.3.3 RNA [i](#)

There are no RNA molecules in this entry.

5.4 Non-standard residues in protein, DNA, RNA chains [i](#)

There are no non-standard protein/DNA/RNA residues in this entry.

5.5 Carbohydrates [i](#)

There are no carbohydrates in this entry.

5.6 Ligand geometry [i](#)

Of 18 ligands modelled in this entry, 10 are monoatomic - leaving 8 for Mogul analysis.

In the following table, the Counts columns list the number of bonds (or angles) for which Mogul statistics could be retrieved, the number of bonds (or angles) that are observed in the model and the number of bonds (or angles) that are defined in the chemical component dictionary. The Link column lists molecule types, if any, to which the group is linked. The Z score for a bond length (or angle) is the number of standard deviations the observed value is removed from the expected value. A bond length (or angle) with $|Z| > 2$ is considered an outlier worth inspection. RMSZ is the root-mean-square of all Z scores of the bond lengths (or angles).

Mol	Type	Chain	Res	Link	Bond lengths			Bond angles		
					Counts	RMSZ	# Z > 2	Counts	RMSZ	# Z > 2
3	ADP	A	1003	2	22,29,29	1.15	2 (9%)	27,45,45	1.91	3 (11%)
5	G7X	A	2001	-	36,37,40	1.19	3 (8%)	39,53,56	1.01	2 (5%)
3	ADP	B	1003	2	22,29,29	0.99	1 (4%)	27,45,45	2.11	6 (22%)
5	G7X	B	2001	-	39,40,40	1.03	3 (7%)	41,56,56	1.23	2 (4%)
3	ADP	C	1003	2	22,29,29	1.05	2 (9%)	27,45,45	2.06	4 (14%)
5	G7X	C	2001	-	39,40,40	0.95	1 (2%)	41,56,56	1.29	5 (12%)
3	ADP	D	1003	2	22,29,29	1.19	2 (9%)	27,45,45	2.11	5 (18%)
5	G7X	D	2001	-	39,40,40	0.96	0	41,56,56	1.24	4 (9%)

In the following table, the Chirals column lists the number of chiral outliers, the number of chiral centers analysed, the number of these observed in the model and the number defined in the chemical component dictionary. Similar counts are reported in the Torsion and Rings columns. '-' means no outliers of that kind were identified.

Mol	Type	Chain	Res	Link	Chirals	Torsions	Rings
3	ADP	A	1003	2	-	0/12/32/32	0/3/3/3
5	G7X	A	2001	-	-	0/20/24/28	0/4/4/4
3	ADP	B	1003	2	-	0/12/32/32	0/3/3/3
5	G7X	B	2001	-	-	0/24/28/28	0/4/4/4
3	ADP	C	1003	2	-	0/12/32/32	0/3/3/3
5	G7X	C	2001	-	-	0/24/28/28	0/4/4/4
3	ADP	D	1003	2	-	0/12/32/32	0/3/3/3
5	G7X	D	2001	-	-	0/24/28/28	0/4/4/4

All (14) bond length outliers are listed below:

Mol	Chain	Res	Type	Atoms	Z	Observed(Å)	Ideal(Å)
5	B	2001	G7X	CAI-NAT	2.19	1.41	1.36
3	C	1003	ADP	O4'-C1'	2.19	1.44	1.41
5	B	2001	G7X	CAI-CAJ	2.39	1.54	1.50
5	A	2001	G7X	CAM-CAL	2.49	1.54	1.50
5	B	2001	G7X	CAI-NAH	2.60	1.35	1.31
3	C	1003	ADP	C5-C4	2.75	1.46	1.40
3	A	1003	ADP	C5-C4	2.79	1.46	1.40
5	A	2001	G7X	CAI-NAT	2.88	1.43	1.36
3	D	1003	ADP	O4'-C1'	2.97	1.45	1.41
5	C	2001	G7X	CAI-NAH	3.02	1.35	1.31
3	B	1003	ADP	C5-C4	3.15	1.47	1.40
3	D	1003	ADP	C5-C4	3.29	1.47	1.40
5	A	2001	G7X	CAI-NAH	3.34	1.36	1.31
3	A	1003	ADP	O4'-C1'	3.59	1.45	1.41

All (31) bond angle outliers are listed below:

Mol	Chain	Res	Type	Atoms	Z	Observed(°)	Ideal(°)
3	A	1003	ADP	N3-C2-N1	-7.20	123.38	128.89
3	B	1003	ADP	N3-C2-N1	-6.99	123.54	128.89
3	D	1003	ADP	N3-C2-N1	-6.56	123.87	128.89
3	C	1003	ADP	N3-C2-N1	-6.46	123.95	128.89
3	C	1003	ADP	C4-C5-N7	-5.45	104.47	109.48
3	D	1003	ADP	C2'-C1'-N9	-4.62	107.23	114.29
3	B	1003	ADP	C2'-C1'-N9	-4.24	107.81	114.29
3	D	1003	ADP	PA-O3A-PB	-4.08	119.00	132.67

Continued on next page...

Continued from previous page...

Mol	Chain	Res	Type	Atoms	Z	Observed(°)	Ideal(°)
3	A	1003	ADP	C4-C5-N7	-3.89	105.90	109.48
5	D	2001	G7X	CBC-CAU-NAK	-3.74	108.16	113.52
3	C	1003	ADP	C1'-N9-C4	-3.52	121.62	126.94
5	D	2001	G7X	CAB-CAJ-NAK	-3.43	107.90	113.40
3	B	1003	ADP	C4-C5-N7	-3.30	106.44	109.48
3	D	1003	ADP	C4-C5-N7	-3.11	106.62	109.48
3	B	1003	ADP	PA-O3A-PB	-3.08	122.35	132.67
5	C	2001	G7X	CBC-CAU-NAK	-2.93	109.32	113.52
3	A	1003	ADP	PA-O3A-PB	-2.88	123.01	132.67
3	C	1003	ADP	PA-O3A-PB	-2.46	124.42	132.67
3	B	1003	ADP	C5'-C4'-C3'	-2.07	107.01	115.21
5	D	2001	G7X	CAP-CAE-CAF	-2.05	119.19	121.87
5	C	2001	G7X	OAV-CAL-CAM	-2.01	116.37	120.17
5	A	2001	G7X	CAQ-CAR-CAG	2.00	120.88	117.56
5	C	2001	G7X	CBF-CBG-CBH	2.05	121.42	118.13
3	B	1003	ADP	O4'-C1'-N9	2.40	113.11	108.10
5	C	2001	G7X	CAA-CAB-CAJ	2.48	113.51	110.57
5	B	2001	G7X	OAV-CAL-NAK	2.60	125.11	121.52
5	C	2001	G7X	CAR-CAS-NAT	3.21	118.74	116.09
3	D	1003	ADP	O4'-C1'-N9	3.28	114.97	108.10
5	D	2001	G7X	CAR-CAS-NAT	3.72	119.17	116.09
5	A	2001	G7X	CAR-CAS-NAT	3.97	119.37	116.09
5	B	2001	G7X	CAR-CAS-NAT	4.47	119.78	116.09

There are no chirality outliers.

There are no torsion outliers.

There are no ring outliers.

7 monomers are involved in 47 short contacts:

Mol	Chain	Res	Type	Clashes	Symm-Clashes
5	A	2001	G7X	6	0
3	B	1003	ADP	1	0
5	B	2001	G7X	13	0
3	C	1003	ADP	2	0
5	C	2001	G7X	12	0
3	D	1003	ADP	2	0
5	D	2001	G7X	11	0

5.7 Other polymers ⓘ

There are no such residues in this entry.

5.8 Polymer linkage issues ⓘ

There are no chain breaks in this entry.

6 Fit of model and data ⓘ

6.1 Protein, DNA and RNA chains ⓘ

In the following table, the column labelled ‘#RSRZ> 2’ contains the number (and percentage) of RSRZ outliers, followed by percent RSRZ outliers for the chain as percentile scores relative to all X-ray entries and entries of similar resolution. The OWAB column contains the minimum, median, 95th percentile and maximum values of the occupancy-weighted average B-factor per residue. The column labelled ‘Q< 0.9’ lists the number of (and percentage) of residues with an average occupancy less than 0.9.

Mol	Chain	Analysed	<RSRZ>	#RSRZ>2	OWAB(Å ²)	Q<0.9
1	A	325/370 (87%)	0.37	20 (6%) 24 18	22, 56, 102, 129	0
1	B	312/370 (84%)	0.52	28 (8%) 12 8	28, 58, 105, 137	0
1	C	311/370 (84%)	0.43	21 (6%) 20 15	23, 51, 102, 153	0
1	D	309/370 (83%)	0.25	11 (3%) 46 38	21, 50, 89, 112	0
All	All	1257/1480 (84%)	0.39	80 (6%) 23 17	21, 54, 101, 153	0

All (80) RSRZ outliers are listed below:

Mol	Chain	Res	Type	RSRZ
1	C	325	GLY	9.1
1	A	363	PRO	8.8
1	C	301	ALA	8.5
1	B	178	VAL	7.6
1	B	57	LEU	7.4
1	A	362	LYS	6.0
1	C	303	VAL	5.9
1	B	272	ILE	4.9
1	D	363	PRO	4.8
1	D	288	ILE	4.6
1	C	323	SER	4.5
1	C	304	GLU	4.4
1	B	180	GLU	4.2
1	A	185	PHE	4.2
1	C	16	GLY	4.2
1	B	179	SER	3.9
1	C	324	LEU	3.7
1	A	55	GLY	3.7
1	C	299	ILE	3.6
1	A	303	VAL	3.5
1	C	17	LYS	3.5

Continued on next page...

Continued from previous page...

Mol	Chain	Res	Type	RSRZ
1	D	364	GLU	3.5
1	B	303	VAL	3.4
1	C	326	GLY	3.4
1	A	175	SER	3.4
1	A	272	ILE	3.4
1	B	327	ARG	3.3
1	D	361	ASN	3.2
1	A	57	LEU	3.2
1	A	190	ASN	3.2
1	B	172	LEU	3.2
1	B	309	VAL	3.2
1	B	355	ARG	3.1
1	A	364	GLU	3.1
1	A	273	GLY	3.1
1	B	122	ASN	3.1
1	A	227	LEU	3.0
1	A	178	VAL	2.9
1	B	181	ARG	2.9
1	B	58	ALA	2.9
1	A	357	LYS	2.9
1	B	174	PRO	2.8
1	B	310	PRO	2.8
1	C	358	ASN	2.7
1	C	366	ASN	2.6
1	D	153	GLU	2.6
1	D	122	ASN	2.5
1	D	271	ASN	2.5
1	D	152	THR	2.5
1	A	179	SER	2.5
1	A	361	ASN	2.4
1	B	328	THR	2.4
1	B	304	GLU	2.4
1	C	311	TYR	2.4
1	B	59	ASP	2.4
1	B	98	ASN	2.3
1	B	325	GLY	2.3
1	B	224	ALA	2.3
1	C	188	PRO	2.3
1	B	171	LEU	2.3
1	B	177	ASP	2.3
1	A	196	ILE	2.3
1	B	305	ARG	2.3

Continued on next page...

Continued from previous page...

Mol	Chain	Res	Type	RSRZ
1	D	212	GLN	2.3
1	C	357	LYS	2.2
1	B	123	GLU	2.2
1	B	227	LEU	2.2
1	B	324	LEU	2.2
1	C	327	ARG	2.2
1	C	55	GLY	2.1
1	D	359	ILE	2.1
1	A	247	GLU	2.1
1	B	271	ASN	2.1
1	C	361	ASN	2.1
1	C	365	VAL	2.1
1	A	214	LEU	2.1
1	A	307	PRO	2.1
1	C	302	LEU	2.0
1	C	196	ILE	2.0
1	D	169	PHE	2.0

6.2 Non-standard residues in protein, DNA, RNA chains [i](#)

There are no non-standard protein/DNA/RNA residues in this entry.

6.3 Carbohydrates [i](#)

There are no carbohydrates in this entry.

6.4 Ligands [i](#)

In the following table, the Atoms column lists the number of modelled atoms in the group and the number defined in the chemical component dictionary. LLDF column lists the quality of electron density of the group with respect to its neighbouring residues in protein, DNA or RNA chains. The B-factors column lists the minimum, median, 95th percentile and maximum values of B factors of atoms in the group. The column labelled 'Q< 0.9' lists the number of atoms with occupancy less than 0.9.

Mol	Type	Chain	Res	Atoms	RSCC	RSR	LLDF	B-factors(Å ²)	Q<0.9
5	G7X	C	2001	37/37	0.92	0.19	1.31	18,39,56,58	0
4	CL	A	1368	1/1	0.89	0.16	0.45	65,65,65,65	0
5	G7X	B	2001	37/37	0.89	0.19	0.28	26,46,64,69	0
5	G7X	A	2001	34/37	0.93	0.18	0.23	12,42,74,80	0

Continued on next page...

Continued from previous page...

Mol	Type	Chain	Res	Atoms	RSCC	RSR	LLDF	B-factors(\AA^2)	Q<0.9
3	ADP	D	1003	27/27	0.95	0.16	0.08	15,31,45,55	0
5	G7X	D	2001	37/37	0.89	0.17	0.04	25,43,61,69	0
3	ADP	A	1003	27/27	0.97	0.15	0.03	15,33,42,45	0
3	ADP	C	1003	27/27	0.96	0.16	0.01	15,30,47,50	0
4	CL	D	1365	1/1	0.87	0.16	-0.21	51,51,51,51	0
4	CL	B	1362	1/1	0.86	0.14	-0.71	53,53,53,53	0
3	ADP	B	1003	27/27	0.95	0.15	-0.78	18,36,45,54	0
4	CL	B	1360	1/1	0.92	0.12	-2.02	59,59,59,59	0
4	CL	A	1367	1/1	0.97	0.08	-4.95	38,38,38,38	0
2	MG	B	1001	1/1	0.70	0.17	-	35,35,35,35	0
2	MG	D	1001	1/1	0.69	0.24	-	50,50,50,50	0
2	MG	A	1001	1/1	0.88	0.13	-	30,30,30,30	0
4	CL	B	1361	1/1	0.83	0.12	-	60,60,60,60	0
2	MG	C	1001	1/1	0.89	0.18	-	55,55,55,55	0

6.5 Other polymers [i](#)

There are no such residues in this entry.