



## Full wwPDB X-ray Structure Validation Report ⓘ

Feb 1, 2016 – 07:31 AM GMT

PDB ID : 3B3P  
Title : Structure of neuronal nos heme domain in complex with a inhibitor (+-)-n1-{  
cis-4'-[(6"-amino-4"-methylpyridin-2"-yl)methyl]pyrrolidin-3'-yl}-n2-(4'-chlor  
obenzyl)ethane-1,2-diamine  
Authors : Igarashi, J.; Li, H.; Poulos, T.L.  
Deposited on : 2007-10-22  
Resolution : 2.45 Å(reported)

This is a Full wwPDB X-ray Structure Validation Report for a publicly released PDB entry.  
We welcome your comments at [validation@mail.wwpdb.org](mailto:validation@mail.wwpdb.org)  
A user guide is available at  
<http://wwpdb.org/validation/2016/XrayValidationReportHelp>  
with specific help available everywhere you see the ⓘ symbol.

---

The following versions of software and data (see [references ⓘ](#)) were used in the production of this report:

MolProbity : 4.02b-467  
Mogul : 1.7 (RC4), CSD as536be (2015)  
Xtriage (Phenix) : 1.9-1692  
EDS : rb-20026688  
Percentile statistics : 20151230.v01 (using entries in the PDB archive December 30th 2015)  
Refmac : 5.8.0135  
CCP4 : 6.5.0  
Ideal geometry (proteins) : Engh & Huber (2001)  
Ideal geometry (DNA, RNA) : Parkinson et al. (1996)  
Validation Pipeline (wwPDB-VP) : trunk26865

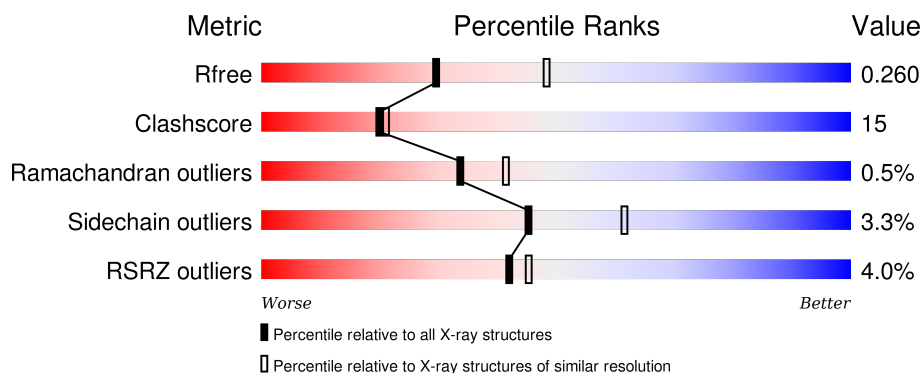
# 1 Overall quality at a glance

The following experimental techniques were used to determine the structure:

## *X-RAY DIFFRACTION*

The reported resolution of this entry is 2.45 Å.

Percentile scores (ranging between 0-100) for global validation metrics of the entry are shown in the following graphic. The table shows the number of entries on which the scores are based.



Metric	Whole archive (#Entries)	Similar resolution (#Entries, resolution range(Å))
$R_{free}$	91344	4776 (2.50-2.42)
Clashscore	102246	1030 (2.48-2.44)
Ramachandran outliers	100387	1024 (2.48-2.44)
Sidechain outliers	100360	1024 (2.48-2.44)
RSRZ outliers	91569	4787 (2.50-2.42)

The table below summarises the geometric issues observed across the polymeric chains and their fit to the electron density. The red, orange, yellow and green segments on the lower bar indicate the fraction of residues that contain outliers for  $\geq 3$ , 2, 1 and 0 types of geometric quality criteria. A grey segment represents the fraction of residues that are not modelled. The numeric value for each fraction is indicated below the corresponding segment, with a dot representing fractions  $\leq 5\%$ . The upper red bar (where present) indicates the fraction of residues that have poor fit to the electron density. The numeric value is given above the bar.

Mol	Chain	Length	Quality of chain
1	A	422	<div> <div>5%</div> <div>64%</div> <div>31%</div> <div>• •</div> </div>
1	B	422	<div> <div>3%</div> <div>77%</div> <div>19%</div> <div>• •</div> </div>

The following table lists non-polymeric compounds, carbohydrate monomers and non-standard residues in protein, DNA, RNA chains that are outliers for geometric or electron-density-fit criteria:

Mol	Type	Chain	Res	Chirality	Geometry	Clashes	Electron density
2	ACT	A	860	-	-	X	X
6	JI7	A	800	-	-	-	X
6	JI7	B	800	-	-	-	X

## 2 Entry composition [i](#)

There are 7 unique types of molecules in this entry. The entry contains 7104 atoms, of which 0 are hydrogens and 0 are deuteriums.

In the tables below, the ZeroOcc column contains the number of atoms modelled with zero occupancy, the AltConf column contains the number of residues with at least one atom in alternate conformation and the Trace column contains the number of residues modelled with at most 2 atoms.

- Molecule 1 is a protein called Nitric-oxide synthase.

Mol	Chain	Residues	Atoms					ZeroOcc	AltConf	Trace
1	A	409	Total	C	N	O	S	0	0	0
			3331	2132	571	607	21			
1	B	411	Total	C	N	O	S	0	0	0
			3345	2140	574	610	21			

- Molecule 2 is ACETATE ION (three-letter code: ACT) (formula:  $C_2H_3O_2$ ).

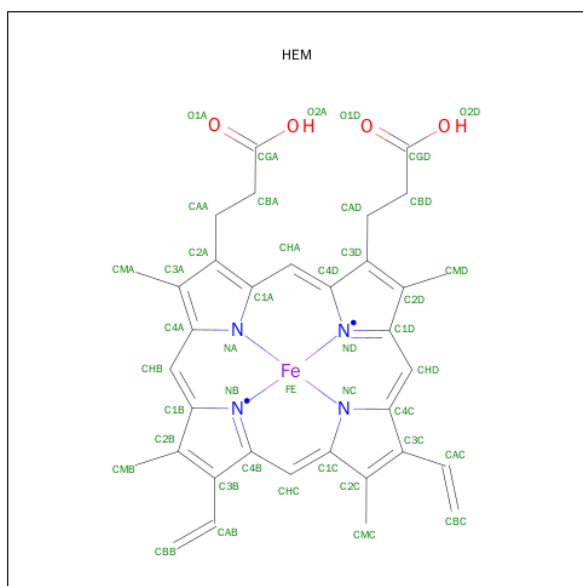


Mol	Chain	Residues	Atoms			ZeroOcc	AltConf
2	A	1	Total	C	O	0	0
			4	2	2		
2	B	1	Total	C	O	0	0
			4	2	2		

- Molecule 3 is ZINC ION (three-letter code: ZN) (formula: Zn).

Mol	Chain	Residues	Atoms	ZeroOcc	AltConf
3	A	1	Total Zn 1 1	0	0

- Molecule 4 is PROTOPORPHYRIN IX CONTAINING FE (three-letter code: HEM) (formula:  $C_{34}H_{32}FeN_4O_4$ ).



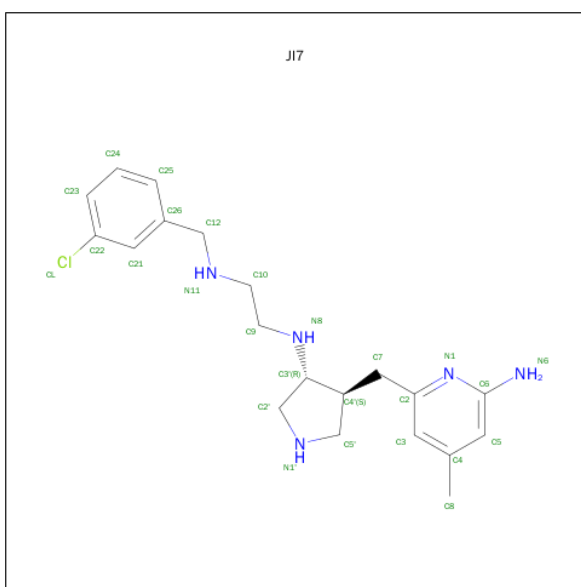
Mol	Chain	Residues	Atoms					ZeroOcc	AltConf
4	A	1	Total 43	C 34	Fe 1	N 4	O 4	0	0
4	B	1	Total 43	C 34	Fe 1	N 4	O 4	0	0

- Molecule 5 is 5,6,7,8-TETRAHYDROBIOPTERIN (three-letter code: H4B) (formula:  $\text{C}_9\text{H}_{15}\text{N}_5\text{O}_3$ ).



Mol	Chain	Residues	Atoms				ZeroOcc	AltConf
5	A	1	Total	C	N	O	0	0
			17	9	5	3		
5	B	1	Total	C	N	O	0	0
			17	9	5	3		

- Molecule 6 is N-[(3R,4S)-4-[(6-AMINO-4-METHYLPYRIDIN-2-YL)METHYL]PYRROLIDIN-3-YL]-N'-(3-CHLOROBENZYL)ETHANE-1,2-DIAMINE (three-letter code: JI7) (formula: C<sub>20</sub>H<sub>28</sub>ClN<sub>5</sub>).



*Continued from previous page...*

Mol	Chain	Residues	Atoms				ZeroOcc	AltConf
6	B	1	Total	C	Cl	N	0	0
			26	20	1	5		

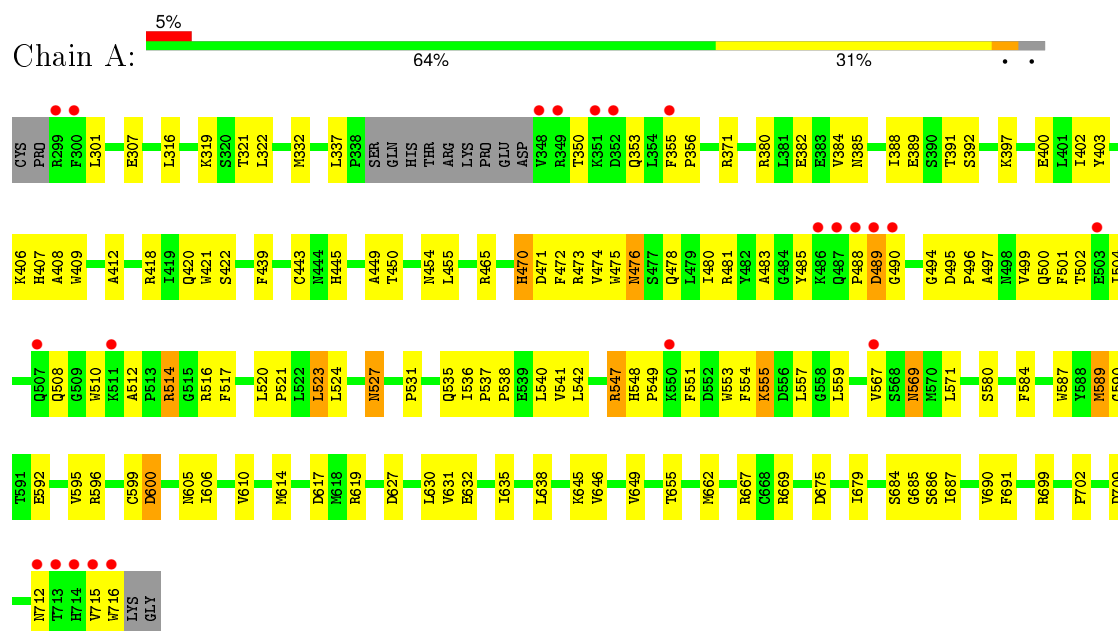
- Molecule 7 is water.

Mol	Chain	Residues	Atoms		ZeroOcc	AltConf
7	A	113	Total	O	0	0
			113	113		
7	B	134	Total	O	0	0
			134	134		

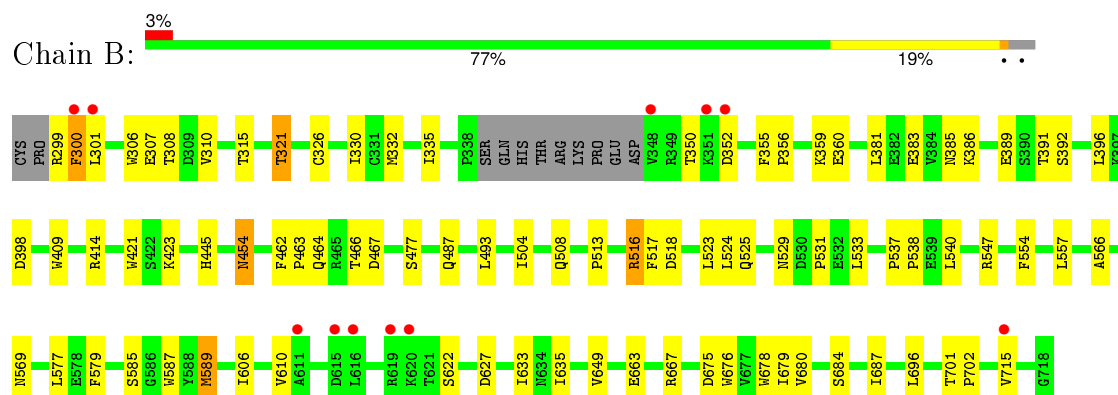
### 3 Residue-property plots

These plots are drawn for all protein, RNA and DNA chains in the entry. The first graphic for a chain summarises the proportions of errors displayed in the second graphic. The second graphic shows the sequence view annotated by issues in geometry and electron density. Residues are color-coded according to the number of geometric quality criteria for which they contain at least one outlier: green = 0, yellow = 1, orange = 2 and red = 3 or more. A red dot above a residue indicates a poor fit to the electron density ( $RSRZ > 2$ ). Stretches of 2 or more consecutive residues without any outlier are shown as a green connector. Residues present in the sample, but not in the model, are shown in grey.

#### • Molecule 1: Nitric-oxide synthase



#### • Molecule 1: Nitric-oxide synthase





## 4 Data and refinement statistics

Property	Value	Source
Space group	P 21 21 21	Depositor
Cell constants a, b, c, $\alpha$ , $\beta$ , $\gamma$	51.58Å 110.25Å 164.39Å 90.00° 90.00° 90.00°	Depositor
Resolution (Å)	38.86 – 2.45 38.86 – 2.45	Depositor EDS
% Data completeness (in resolution range)	98.8 (38.86-2.45) 98.6 (38.86-2.45)	Depositor EDS
$R_{merge}$	0.10	Depositor
$R_{sym}$	0.10	Depositor
$\langle I/\sigma(I) \rangle$ <sup>1</sup>	2.12 (at 2.45Å)	Xtriage
Refinement program	CNS 1.1	Depositor
R, $R_{free}$	0.209 , 0.265 0.204 , 0.260	Depositor DCC
$R_{free}$ test set	1747 reflections (5.27%)	DCC
Wilson B-factor (Å <sup>2</sup> )	34.4	Xtriage
Anisotropy	1.160	Xtriage
Bulk solvent $k_{sol}$ (e/Å <sup>3</sup> ), $B_{sol}$ (Å <sup>2</sup> )	0.36 , 51.2	EDS
Estimated twinning fraction	No twinning to report.	Xtriage
L-test for twinning <sup>2</sup>	$\langle  L  \rangle = 0.49$ , $\langle L^2 \rangle = 0.32$	Xtriage
Outliers	1 of 34990 reflections (0.003%)	Xtriage
$F_o, F_c$ correlation	0.95	EDS
Total number of atoms	7104	wwPDB-VP
Average B, all atoms (Å <sup>2</sup> )	45.0	wwPDB-VP

Xtriage's analysis on translational NCS is as follows: *The largest off-origin peak in the Patterson function is 5.78% of the height of the origin peak. No significant pseudotranslation is detected.*

<sup>1</sup>Intensities estimated from amplitudes.

<sup>2</sup>Theoretical values of  $\langle |L| \rangle$ ,  $\langle L^2 \rangle$  for acentric reflections are 0.5, 0.375 respectively for untwinned datasets, and 0.333, 0.2 for perfectly twinned datasets.

## 5 Model quality [i](#)

### 5.1 Standard geometry [i](#)

Bond lengths and bond angles in the following residue types are not validated in this section: JI7, ZN, H4B, HEM, ACT

The Z score for a bond length (or angle) is the number of standard deviations the observed value is removed from the expected value. A bond length (or angle) with  $|Z| > 5$  is considered an outlier worth inspection. RMSZ is the root-mean-square of all Z scores of the bond lengths (or angles).

Mol	Chain	Bond lengths		Bond angles	
		RMSZ	$\# Z  > 5$	RMSZ	$\# Z  > 5$
1	A	0.45	0/3424	0.67	2/4645 (0.0%)
1	B	0.47	0/3438	0.69	2/4661 (0.0%)
All	All	0.46	0/6862	0.68	4/9306 (0.0%)

There are no bond length outliers.

All (4) bond angle outliers are listed below:

Mol	Chain	Res	Type	Atoms	Z	Observed(°)	Ideal(°)
1	B	589	MET	N-CA-C	-5.60	95.88	111.00
1	A	589	MET	N-CA-C	-5.50	96.16	111.00
1	A	474	VAL	N-CA-C	-5.30	96.69	111.00
1	B	326	CYS	CA-CB-SG	5.08	123.14	114.00

There are no chirality outliers.

There are no planarity outliers.

### 5.2 Too-close contacts [i](#)

In the following table, the Non-H and H(model) columns list the number of non-hydrogen atoms and hydrogen atoms in the chain respectively. The H(added) column lists the number of hydrogen atoms added and optimized by MolProbity. The Clashes column lists the number of clashes within the asymmetric unit, whereas Symm-Clashes lists symmetry related clashes.

Mol	Chain	Non-H	H(model)	H(added)	Clashes	Symm-Clashes
1	A	3331	0	3243	129	0
1	B	3345	0	3259	65	0
2	A	4	0	3	2	0
2	B	4	0	3	0	0
3	A	1	0	0	0	0

*Continued on next page...*

*Continued from previous page...*

Mol	Chain	Non-H	H(model)	H(added)	Clashes	Symm-Clashes
4	A	43	0	30	5	0
4	B	43	0	30	5	0
5	A	17	0	15	0	0
5	B	17	0	15	0	0
6	A	26	0	28	7	0
6	B	26	0	28	5	0
7	A	113	0	0	6	0
7	B	134	0	0	11	0
All	All	7104	0	6654	200	0

The all-atom clashscore is defined as the number of clashes found per 1000 atoms (including hydrogen atoms). The all-atom clashscore for this structure is 15.

All (200) close contacts within the same asymmetric unit are listed below, sorted by their clash magnitude.

Atom-1	Atom-2	Interatomic distance (Å)	Clash overlap (Å)
1:A:523:LEU:HD22	1:A:531:PRO:HB2	1.36	1.08
1:A:322:LEU:HB3	1:A:699:ARG:HH21	1.40	0.84
1:A:321:THR:HG23	1:A:322:LEU:H	1.46	0.80
1:A:470:HIS:HB3	1:A:527:ASN:ND2	1.98	0.77
1:A:384:VAL:O	1:A:388:ILE:HG13	1.85	0.75
1:B:516:ARG:HG2	1:B:517:PHE:CE1	2.22	0.75
1:A:380:ARG:NH1	1:A:397:LYS:HG2	2.03	0.73
1:A:480:ILE:HD13	1:A:541:VAL:HG13	1.70	0.73
1:A:610:VAL:O	1:A:614:MET:HG3	1.89	0.72
1:A:596:ARG:O	1:A:600:ASP:HB2	1.90	0.72
1:A:371:ARG:HG3	1:A:371:ARG:HH21	1.55	0.72
1:A:483:ALA:HB1	1:A:502:THR:CG2	2.22	0.70
1:A:523:LEU:HD22	1:A:531:PRO:CB	2.20	0.69
1:A:555:LYS:HB3	1:A:555:LYS:NZ	2.08	0.69
1:B:525:GLN:HG3	1:B:529:ASN:O	1.94	0.67
1:B:383:GLU:HA	1:B:386:LYS:HE3	1.75	0.67
1:A:655:THR:HB	1:A:690:VAL:HG13	1.76	0.67
1:A:675:ASP:O	1:A:679:ILE:HG12	1.96	0.65
4:B:750:HEM:HBA2	6:B:800:JI7:H72	1.77	0.65
1:B:566:ALA:HB2	1:B:585:SER:HB3	1.78	0.65
1:B:359:LYS:HG3	1:B:381:LEU:HD21	1.79	0.65
1:B:321:THR:HB	7:B:36:HOH:O	1.97	0.65
1:A:380:ARG:HD3	1:A:400:GLU:OE1	1.96	0.64
1:A:630:LEU:HD22	1:B:687:ILE:HD13	1.79	0.63
1:B:537:PRO:HA	7:B:182:HOH:O	1.98	0.63

*Continued on next page...*

*Continued from previous page...*

Atom-1	Atom-2	Interatomic distance (Å)	Clash overlap (Å)
1:B:391:THR:O	1:B:392:SER:HB2	1.99	0.63
1:A:355:PHE:N	1:A:356:PRO:HD2	2.13	0.63
1:A:551:PHE:HE1	1:A:614:MET:HE3	1.63	0.63
1:A:307:GLU:HG3	7:B:105:HOH:O	1.99	0.62
1:A:332:MET:HE1	1:B:301:LEU:HD22	1.81	0.62
4:B:750:HEM:HMC2	4:B:750:HEM:HBC2	1.82	0.62
1:A:551:PHE:HB3	1:A:553:TRP:NE1	2.16	0.61
1:B:701:THR:HA	1:B:702:PRO:C	2.22	0.60
1:B:684:SER:HB3	1:B:687:ILE:HD11	1.82	0.60
1:A:488:PRO:C	1:A:490:GLY:H	2.04	0.60
1:A:667:ARG:HG3	1:A:667:ARG:HH11	1.67	0.60
1:B:355:PHE:CE1	1:B:385:ASN:HB2	2.36	0.60
1:A:699:ARG:HD2	7:A:132:HOH:O	2.03	0.59
1:A:551:PHE:HD1	1:A:553:TRP:CZ2	2.21	0.59
1:B:332:MET:HB3	1:B:335:ILE:HG13	1.84	0.59
1:B:684:SER:HB3	1:B:687:ILE:CG1	2.32	0.58
1:B:386:LYS:O	1:B:389:GLU:HG2	2.03	0.58
1:A:350:THR:OG1	1:A:353:GLN:HG3	2.04	0.58
1:A:569:ASN:H	1:A:569:ASN:ND2	2.02	0.58
4:B:750:HEM:O2A	6:B:800:JI7:H3'	2.04	0.57
1:A:548:HIS:ND1	1:A:549:PRO:HD2	2.19	0.57
1:A:475:TRP:HB2	1:A:523:LEU:HB3	1.86	0.57
1:A:516:ARG:HD3	1:A:517:PHE:CE1	2.39	0.57
1:A:569:ASN:H	1:A:569:ASN:HD22	1.52	0.57
1:A:321:THR:HG23	1:A:322:LEU:N	2.20	0.56
1:A:371:ARG:CG	1:A:371:ARG:HH21	2.18	0.56
4:A:750:HEM:HMC2	4:A:750:HEM:HBC2	1.87	0.56
1:B:523:LEU:CD1	1:B:531:PRO:HB2	2.34	0.56
1:A:483:ALA:HB1	1:A:502:THR:HG21	1.87	0.56
1:B:508:GLN:HB2	1:B:533:LEU:HD11	1.86	0.56
1:A:322:LEU:HB3	1:A:699:ARG:NH2	2.17	0.55
1:A:627:ASP:O	1:A:631:VAL:HG23	2.06	0.55
1:A:483:ALA:HB1	1:A:502:THR:HG23	1.89	0.55
1:A:321:THR:HG23	1:A:322:LEU:HG	1.87	0.55
1:A:551:PHE:CD2	1:A:551:PHE:N	2.74	0.55
1:A:569:ASN:N	1:A:569:ASN:HD22	2.03	0.55
1:A:494:GLY:O	1:A:496:PRO:HD3	2.07	0.55
1:A:478:GLN:HB2	1:A:481:ARG:HG3	1.89	0.54
1:A:551:PHE:HD1	1:A:553:TRP:HZ2	1.56	0.54
1:B:566:ALA:CB	1:B:585:SER:HB3	2.38	0.54
1:B:383:GLU:HA	1:B:386:LYS:CE	2.38	0.53

*Continued on next page...*

*Continued from previous page...*

Atom-1	Atom-2	Interatomic distance (Å)	Clash overlap (Å)
1:A:473:ARG:HD2	1:A:580:SER:HB2	1.91	0.53
1:A:322:LEU:HB2	1:A:699:ARG:HE	1.74	0.53
1:A:488:PRO:C	1:A:490:GLY:N	2.63	0.52
1:B:356:PRO:O	1:B:360:GLU:HG3	2.10	0.52
1:B:589:MET:HA	1:B:649:VAL:O	2.10	0.52
1:A:551:PHE:HD2	1:A:551:PHE:N	2.08	0.52
1:B:504:ILE:O	1:B:508:GLN:HG2	2.10	0.52
1:A:684:SER:HB3	1:A:687:ILE:HG12	1.92	0.52
1:A:382:GLU:OE1	1:A:385:ASN:HB3	2.09	0.52
1:B:462:PHE:HB3	1:B:463:PRO:CD	2.39	0.52
1:A:606:ILE:O	1:A:610:VAL:HG23	2.11	0.51
1:B:355:PHE:N	1:B:356:PRO:HD2	2.25	0.51
1:A:353:GLN:O	1:A:356:PRO:HG2	2.10	0.51
6:B:800:JI7:H2'1	7:B:199:HOH:O	2.10	0.51
1:A:337:LEU:HD11	6:A:800:JI7:CL	2.48	0.51
1:B:675:ASP:O	1:B:679:ILE:HG12	2.10	0.50
1:A:470:HIS:HB3	1:A:527:ASN:HD22	1.76	0.50
1:A:508:GLN:NE2	1:A:716:TRP:CZ3	2.80	0.50
1:B:538:PRO:HD3	7:B:182:HOH:O	2.10	0.50
1:A:551:PHE:HB3	1:A:553:TRP:CE2	2.47	0.50
1:B:423:LYS:HE3	7:B:142:HOH:O	2.11	0.50
1:A:516:ARG:O	1:A:516:ARG:HG2	2.12	0.50
1:A:501:PHE:CD2	1:A:520:LEU:HD13	2.46	0.49
1:A:465:ARG:HG3	1:A:471:ASP:OD1	2.12	0.49
1:A:523:LEU:CD2	1:A:531:PRO:HB2	2.23	0.49
1:A:508:GLN:OE1	1:A:508:GLN:HA	2.11	0.49
1:A:587:TRP:CZ2	2:A:860:ACT:H3	2.48	0.49
1:A:485:TYR:CE2	1:A:512:ALA:HB1	2.48	0.49
1:A:489:ASP:HB2	7:A:97:HOH:O	2.13	0.48
1:B:299:ARG:HB3	1:B:299:ARG:NH1	2.28	0.48
1:A:409:TRP:CE3	1:A:421:TRP:HA	2.48	0.48
1:A:686:SER:HA	1:A:691:PHE:CG	2.48	0.48
1:A:500:GLN:O	1:A:504:ILE:HG13	2.13	0.48
1:B:487:GLN:HA	1:B:487:GLN:OE1	2.12	0.48
1:A:301:LEU:CD1	1:B:330:ILE:HD13	2.43	0.48
1:B:684:SER:HB3	1:B:687:ILE:CD1	2.42	0.48
1:A:488:PRO:O	1:A:490:GLY:N	2.47	0.48
4:A:750:HEM:O2A	6:A:800:JI7:H3'	2.14	0.48
1:A:510:TRP:CE2	1:A:521:PRO:HD3	2.49	0.47
1:A:555:LYS:HZ3	1:A:555:LYS:HB3	1.79	0.47
1:A:406:LYS:HE2	1:A:422:SER:O	2.14	0.47

*Continued on next page...*

*Continued from previous page...*

Atom-1	Atom-2	Interatomic distance (Å)	Clash overlap (Å)
1:A:449:ALA:O	1:A:455:LEU:HA	2.14	0.47
1:B:524:LEU:O	1:B:531:PRO:HA	2.13	0.47
1:A:667:ARG:HG3	1:A:667:ARG:NH1	2.29	0.47
1:B:606:ILE:HD11	1:B:633:ILE:HD13	1.96	0.47
1:B:423:LYS:HG3	7:B:142:HOH:O	2.13	0.47
1:B:684:SER:CB	1:B:687:ILE:HD11	2.45	0.47
1:A:350:THR:N	1:A:353:GLN:OE1	2.48	0.47
1:A:557:LEU:HB2	1:A:559:LEU:HG	1.97	0.47
6:B:800:JI7:H21	7:B:14:HOH:O	2.14	0.47
1:A:496:PRO:O	1:A:499:VAL:HG23	2.15	0.47
1:B:513:PRO:HG2	1:B:518:ASP:CG	2.36	0.47
1:B:610:VAL:HG21	1:B:633:ILE:HD11	1.96	0.46
1:B:308:THR:OG1	1:B:310:VAL:HG23	2.16	0.46
1:B:300:PHE:CD1	1:B:300:PHE:N	2.83	0.46
1:A:555:LYS:HB3	1:A:555:LYS:HZ2	1.79	0.46
1:A:355:PHE:N	1:A:356:PRO:CD	2.77	0.46
1:A:508:GLN:NE2	1:A:716:TRP:HZ3	2.12	0.46
1:B:409:TRP:CE3	1:B:421:TRP:HA	2.50	0.46
1:A:684:SER:O	1:A:687:ILE:HG12	2.15	0.46
1:A:450:THR:O	1:A:455:LEU:HD23	2.16	0.46
1:A:470:HIS:ND1	1:A:470:HIS:N	2.64	0.46
1:A:617:ASP:OD2	1:A:619:ARG:HB2	2.15	0.46
1:A:371:ARG:CG	1:A:371:ARG:NH2	2.77	0.46
1:A:455:LEU:HD12	1:A:587:TRP:CB	2.46	0.45
1:B:516:ARG:HD2	7:B:169:HOH:O	2.16	0.45
2:A:860:ACT:CH3	4:A:750:HEM:HAB	2.45	0.45
1:A:501:PHE:HD2	1:A:520:LEU:HD13	1.80	0.45
1:B:477:SER:HB2	1:B:569:ASN:ND2	2.31	0.45
1:A:684:SER:HB3	1:A:687:ILE:CG1	2.46	0.45
1:A:551:PHE:O	1:A:554:PHE:HB2	2.16	0.45
1:A:614:MET:CE	1:A:632:GLU:HG3	2.46	0.45
1:A:569:ASN:N	1:A:569:ASN:ND2	2.61	0.45
1:B:663:GLU:HB3	1:B:667:ARG:NH1	2.32	0.45
6:A:800:JI7:H23	1:B:306:TRP:CZ3	2.52	0.45
1:A:403:TYR:CE1	1:A:407:HIS:CE1	3.06	0.44
1:B:462:PHE:HB3	1:B:463:PRO:HD2	1.99	0.44
1:B:299:ARG:HH11	1:B:299:ARG:HB3	1.82	0.44
1:B:493:LEU:HB2	7:B:153:HOH:O	2.18	0.44
4:B:750:HEM:C1C	6:B:800:JI7:H83	2.53	0.44
1:B:606:ILE:O	1:B:610:VAL:HG23	2.17	0.44
1:A:709:ASP:HB2	1:A:712:ASN:ND2	2.32	0.44

*Continued on next page...*

*Continued from previous page...*

Atom-1	Atom-2	Interatomic distance (Å)	Clash overlap (Å)
1:A:391:THR:O	1:A:392:SER:OG	2.24	0.44
1:B:396:LEU:HG	1:B:577:LEU:HD12	2.00	0.44
1:A:455:LEU:HD12	1:A:587:TRP:HB3	1.98	0.44
1:A:445:HIS:CD2	1:A:445:HIS:C	2.91	0.44
1:A:402:ILE:O	1:A:403:TYR:C	2.56	0.43
1:A:547:ARG:HB2	7:A:73:HOH:O	2.17	0.43
1:A:589:MET:HA	1:A:649:VAL:O	2.17	0.43
1:A:715:VAL:O	1:A:715:VAL:HG23	2.18	0.43
1:A:476:ASN:N	1:A:476:ASN:OD1	2.51	0.43
1:B:414:ARG:HD3	1:B:678:TRP:CD2	2.54	0.43
1:B:454:ASN:ND2	7:B:234:HOH:O	2.52	0.43
1:A:512:ALA:C	1:A:514:ARG:H	2.21	0.43
1:A:408:ALA:HA	1:A:702:PRO:O	2.19	0.43
1:A:571:LEU:C	1:A:571:LEU:HD23	2.39	0.43
1:A:475:TRP:CE3	1:A:523:LEU:HD13	2.53	0.43
1:A:590:GLY:HA3	1:A:638:LEU:HD21	2.01	0.43
4:A:750:HEM:HBA2	6:A:800:JI7:H72	2.01	0.42
1:A:508:GLN:HE22	1:A:716:TRP:HZ3	1.66	0.42
1:A:316:LEU:HD22	1:A:669:ARG:HG2	2.01	0.42
1:B:676:TRP:CZ2	1:B:680:VAL:HG21	2.54	0.42
1:A:316:LEU:HD12	1:A:319:LYS:HD2	2.01	0.42
1:B:464:GLN:HB3	1:B:579:PHE:CE2	2.54	0.42
1:A:516:ARG:HD3	1:A:517:PHE:HE1	1.84	0.42
1:A:524:LEU:O	1:A:531:PRO:HA	2.20	0.42
1:A:542:LEU:HD21	1:A:646:VAL:HG22	2.01	0.42
1:A:595:VAL:O	1:A:599:CYS:HB2	2.20	0.42
1:A:592:GLU:OE1	6:A:800:JI7:N1	2.52	0.42
1:A:590:GLY:HA3	7:A:4:HOH:O	2.18	0.42
1:B:466:THR:OG1	1:B:467:ASP:N	2.52	0.42
7:A:101:HOH:O	1:B:307:GLU:HG3	2.19	0.42
1:B:554:PHE:O	1:B:557:LEU:HB2	2.20	0.42
1:A:332:MET:HE2	1:B:696:LEU:HD21	2.02	0.42
7:A:143:HOH:O	1:B:635:ILE:HA	2.19	0.42
1:A:418:ARG:C	1:A:420:GLN:N	2.71	0.41
1:A:551:PHE:CD1	1:A:553:TRP:HZ2	2.38	0.41
1:A:535:GLN:O	1:A:536:ILE:C	2.57	0.41
4:A:750:HEM:C1C	6:A:800:JI7:H83	2.56	0.41
1:B:350:THR:HG22	1:B:352:ASP:H	1.85	0.41
1:A:554:PHE:O	1:A:557:LEU:HG	2.21	0.41
1:A:337:LEU:HD21	6:A:800:JI7:CL	2.57	0.41
1:A:537:PRO:HB2	1:A:540:LEU:HG	2.02	0.41

*Continued on next page...*

Continued from previous page...

Atom-1	Atom-2	Interatomic distance (Å)	Clash overlap (Å)
1:A:567:VAL:HB	1:A:584:PHE:CE1	2.56	0.41
1:B:684:SER:O	1:B:687:ILE:HG12	2.21	0.41
1:A:472:PHE:O	1:A:473:ARG:HG2	2.21	0.41
1:A:495:ASP:OD1	1:A:497:ALA:HB3	2.22	0.40
1:B:445:HIS:CD2	1:B:445:HIS:C	2.94	0.40
1:A:380:ARG:NH2	1:A:384:VAL:HG22	2.36	0.40
1:B:587:TRP:O	4:B:750:HEM:HMB3	2.21	0.40
1:A:684:SER:OG	1:B:627:ASP:OD2	2.32	0.40
1:B:715:VAL:O	1:B:715:VAL:HG12	2.20	0.40
1:A:439:PHE:CZ	1:A:443:CYS:SG	3.14	0.40
1:A:391:THR:O	1:A:392:SER:CB	2.68	0.40

There are no symmetry-related clashes.

## 5.3 Torsion angles [i](#)

### 5.3.1 Protein backbone [i](#)

In the following table, the Percentiles column shows the percent Ramachandran outliers of the chain as a percentile score with respect to all X-ray entries followed by that with respect to entries of similar resolution.

The Analysed column shows the number of residues for which the backbone conformation was analysed, and the total number of residues.

Mol	Chain	Analysed	Favoured	Allowed	Outliers	Percentiles	
1	A	405/422 (96%)	370 (91%)	31 (8%)	4 (1%)	19	21
1	B	407/422 (96%)	383 (94%)	24 (6%)	0	100	100
All	All	812/844 (96%)	753 (93%)	55 (7%)	4 (0%)	34	41

All (4) Ramachandran outliers are listed below:

Mol	Chain	Res	Type
1	A	412	ALA
1	A	489	ASP
1	A	605	ASN
1	A	685	GLY



### 5.3.2 Protein sidechains ⓘ

In the following table, the Percentiles column shows the percent sidechain outliers of the chain as a percentile score with respect to all X-ray entries followed by that with respect to entries of similar resolution.

The Analysed column shows the number of residues for which the sidechain conformation was analysed, and the total number of residues.

Mol	Chain	Analysed	Rotameric	Outliers	Percentiles	
1	A	365/377 (97%)	350 (96%)	15 (4%)	37	52
1	B	366/377 (97%)	357 (98%)	9 (2%)	55	72
All	All	731/754 (97%)	707 (97%)	24 (3%)	45	61

All (24) residues with a non-rotameric sidechain are listed below:

Mol	Chain	Res	Type
1	A	389	GLU
1	A	454	ASN
1	A	470	HIS
1	A	476	ASN
1	A	514	ARG
1	A	523	LEU
1	A	527	ASN
1	A	538	PRO
1	A	547	ARG
1	A	555	LYS
1	A	569	ASN
1	A	600	ASP
1	A	635	ILE
1	A	645	LYS
1	A	662	MET
1	B	300	PHE
1	B	315	THR
1	B	321	THR
1	B	398	ASP
1	B	454	ASN
1	B	516	ARG
1	B	540	LEU
1	B	547	ARG
1	B	622	SER

Some sidechains can be flipped to improve hydrogen bonding and reduce clashes. All (17) such sidechains are listed below:

Mol	Chain	Res	Type
1	A	425	GLN
1	A	454	ASN
1	A	507	GLN
1	A	527	ASN
1	A	569	ASN
1	A	605	ASN
1	A	697	ASN
1	B	385	ASN
1	B	425	GLN
1	B	454	ASN
1	B	507	GLN
1	B	527	ASN
1	B	535	GLN
1	B	601	ASN
1	B	605	ASN
1	B	642	GLN
1	B	697	ASN

### 5.3.3 RNA [i](#)

There are no RNA molecules in this entry.

## 5.4 Non-standard residues in protein, DNA, RNA chains [i](#)

There are no non-standard protein/DNA/RNA residues in this entry.

## 5.5 Carbohydrates [i](#)

There are no carbohydrates in this entry.

## 5.6 Ligand geometry [i](#)

Of 9 ligands modelled in this entry, 1 is monoatomic - leaving 8 for Mogul analysis.

In the following table, the Counts columns list the number of bonds (or angles) for which Mogul statistics could be retrieved, the number of bonds (or angles) that are observed in the model and the number of bonds (or angles) that are defined in the chemical component dictionary. The Link column lists molecule types, if any, to which the group is linked. The Z score for a bond length (or angle) is the number of standard deviations the observed value is removed from the expected value. A bond length (or angle) with  $|Z| > 2$  is considered an outlier worth inspection. RMSZ is the root-mean-square of all Z scores of the bond lengths (or angles).

Mol	Type	Chain	Res	Link	Bond lengths			Bond angles		
					Counts	RMSZ	# Z  > 2	Counts	RMSZ	# Z  > 2
4	HEM	A	750	1	30,50,50	2.98	9 (30%)	24,82,82	2.65	9 (37%)
5	H4B	A	760	-	13,18,18	2.31	3 (23%)	11,26,26	4.05	6 (54%)
6	JI7	A	800	-	25,28,28	1.37	5 (20%)	30,37,37	1.12	3 (10%)
2	ACT	A	860	-	1,3,3	2.91	1 (100%)	0,3,3	0.00	-
4	HEM	B	750	1	30,50,50	2.59	7 (23%)	24,82,82	2.53	8 (33%)
5	H4B	B	760	-	13,18,18	2.31	3 (23%)	11,26,26	4.03	6 (54%)
6	JI7	B	800	-	25,28,28	1.58	8 (32%)	30,37,37	1.10	2 (6%)
2	ACT	B	860	-	1,3,3	1.73	0	0,3,3	0.00	-

In the following table, the Chirals column lists the number of chiral outliers, the number of chiral centers analysed, the number of these observed in the model and the number defined in the chemical component dictionary. Similar counts are reported in the Torsion and Rings columns. '-' means no outliers of that kind were identified.

Mol	Type	Chain	Res	Link	Chirals	Torsions	Rings
4	HEM	A	750	1	-	0/10/54/54	0/0/8/8
5	H4B	A	760	-	-	0/8/17/17	0/2/2/2
6	JI7	A	800	-	-	0/12/22/22	0/3/3/3
2	ACT	A	860	-	-	0/0/0/0	0/0/0/0
4	HEM	B	750	1	-	0/10/54/54	0/0/8/8
5	H4B	B	760	-	-	0/8/17/17	0/2/2/2
6	JI7	B	800	-	-	0/12/22/22	0/3/3/3
2	ACT	B	860	-	-	0/0/0/0	0/0/0/0

All (36) bond length outliers are listed below:

Mol	Chain	Res	Type	Atoms	Z	Observed(Å)	Ideal(Å)
4	A	750	HEM	C2D-C3D	-6.99	1.33	1.54
4	B	750	HEM	C3D-C4D	-6.87	1.42	1.51
4	A	750	HEM	C3D-C4D	-6.57	1.43	1.51
4	B	750	HEM	C2D-C3D	-6.40	1.35	1.54
4	A	750	HEM	C3B-CAB	-6.15	1.39	1.51
4	A	750	HEM	C3C-CAC	-5.96	1.40	1.51
4	B	750	HEM	C3C-CAC	-5.84	1.40	1.51
4	B	750	HEM	C3B-CAB	-5.71	1.40	1.51
4	A	750	HEM	C3B-C4B	-4.02	1.48	1.51
4	B	750	HEM	C2C-C1C	-3.79	1.45	1.52
4	A	750	HEM	C2D-C1D	-3.23	1.41	1.51
4	B	750	HEM	C2D-C1D	-2.89	1.42	1.51
4	B	750	HEM	C3B-C4B	-2.75	1.49	1.51
6	B	800	JI7	C5-C6	2.04	1.44	1.40

*Continued on next page...*

*Continued from previous page...*

Mol	Chain	Res	Type	Atoms	Z	Observed(Å)	Ideal(Å)
6	A	800	JI7	C24-C25	2.06	1.43	1.38
6	B	800	JI7	C5-C4	2.07	1.42	1.38
6	B	800	JI7	C24-C25	2.10	1.43	1.38
6	A	800	JI7	C21-C22	2.19	1.42	1.38
6	A	800	JI7	C21-C26	2.20	1.43	1.39
6	A	800	JI7	C25-C26	2.26	1.43	1.38
6	B	800	JI7	C25-C26	2.28	1.43	1.38
6	B	800	JI7	C21-C26	2.31	1.43	1.39
4	A	750	HEM	C4C-NC	2.42	1.39	1.36
6	B	800	JI7	C3-C4	2.42	1.43	1.38
6	A	800	JI7	C23-C22	2.55	1.43	1.38
6	B	800	JI7	C21-C22	2.65	1.42	1.38
2	A	860	ACT	CH3-C	2.91	1.52	1.48
6	B	800	JI7	C23-C22	2.97	1.43	1.38
4	A	750	HEM	CHC-C1C	3.32	1.44	1.36
5	B	760	H4B	C4A-N5	3.82	1.46	1.38
5	A	760	H4B	C4A-N5	4.05	1.47	1.38
5	A	760	H4B	C6-N5	4.46	1.54	1.45
5	B	760	H4B	C6-N5	4.47	1.54	1.45
5	B	760	H4B	C4-N3	4.81	1.42	1.33
5	A	760	H4B	C4-N3	4.87	1.42	1.33
4	A	750	HEM	C1C-NC	5.87	1.43	1.36

All (34) bond angle outliers are listed below:

Mol	Chain	Res	Type	Atoms	Z	Observed(°)	Ideal(°)
4	A	750	HEM	CBA-CAA-C2A	-6.62	100.66	112.53
4	B	750	HEM	CBA-CAA-C2A	-4.85	103.84	112.53
5	A	760	H4B	N3-C2-N1	-4.56	118.06	125.53
5	B	760	H4B	N3-C2-N1	-4.40	118.31	125.53
4	A	750	HEM	CBD-CAD-C3D	-2.68	105.76	113.55
6	A	800	JI7	C26-C12-N11	-2.12	107.61	112.88
6	B	800	JI7	N6-C6-N1	2.57	121.19	116.50
4	A	750	HEM	CMD-C2D-C3D	2.77	126.62	114.35
6	A	800	JI7	N6-C6-N1	2.89	121.76	116.50
4	B	750	HEM	CAD-C3D-C4D	2.98	122.97	112.47
4	A	750	HEM	CAD-C3D-C4D	3.06	123.28	112.47
6	A	800	JI7	C6-N1-C2	3.14	120.46	118.23
4	A	750	HEM	CMB-C2B-C3B	3.16	124.42	116.53
5	B	760	H4B	C2-N1-C8A	3.19	121.71	114.54
4	A	750	HEM	C3B-C4B-CHC	3.20	127.67	123.16
4	B	750	HEM	C3C-CAC-CBC	3.36	129.61	124.46

*Continued on next page...*

*Continued from previous page...*

Mol	Chain	Res	Type	Atoms	Z	Observed(°)	Ideal(°)
5	A	760	H4B	N2-C2-N1	3.37	122.79	117.20
5	B	760	H4B	N2-C2-N1	3.48	122.96	117.20
4	B	750	HEM	CMD-C2D-C3D	3.49	129.79	114.35
5	B	760	H4B	C4A-C8A-N8	3.50	122.55	118.43
5	A	760	H4B	C4A-C8A-N8	3.50	122.56	118.43
5	A	760	H4B	C2-N1-C8A	3.61	122.66	114.54
4	B	750	HEM	CMB-C2B-C3B	3.84	126.12	116.53
6	B	800	JI7	C6-N1-C2	3.89	120.99	118.23
4	A	750	HEM	C2D-C3D-C4D	4.57	109.24	101.50
4	B	750	HEM	C2D-C3D-C4D	4.79	109.62	101.50
4	A	750	HEM	CMC-C2C-C3C	4.81	128.53	116.53
4	A	750	HEM	CAD-C3D-C2D	4.81	127.05	113.22
4	B	750	HEM	CAD-C3D-C2D	4.91	127.34	113.22
4	B	750	HEM	CMC-C2C-C3C	4.99	128.98	116.53
5	B	760	H4B	C4-N3-C2	6.54	125.02	115.94
5	A	760	H4B	C4-N3-C2	6.56	125.04	115.94
5	A	760	H4B	C4-C4A-C8A	8.78	122.51	114.56
5	B	760	H4B	C4-C4A-C8A	8.88	122.60	114.56

There are no chirality outliers.

There are no torsion outliers.

There are no ring outliers.

5 monomers are involved in 17 short contacts:

Mol	Chain	Res	Type	Clashes	Symm-Clashes
4	A	750	HEM	5	0
6	A	800	JI7	7	0
2	A	860	ACT	2	0
4	B	750	HEM	5	0
6	B	800	JI7	5	0

## 5.7 Other polymers ⓘ

There are no such residues in this entry.

## 5.8 Polymer linkage issues ⓘ

There are no chain breaks in this entry.

## 6 Fit of model and data ⓘ

### 6.1 Protein, DNA and RNA chains ⓘ

In the following table, the column labelled ‘#RSRZ> 2’ contains the number (and percentage) of RSRZ outliers, followed by percent RSRZ outliers for the chain as percentile scores relative to all X-ray entries and entries of similar resolution. The OWAB column contains the minimum, median, 95<sup>th</sup> percentile and maximum values of the occupancy-weighted average B-factor per residue. The column labelled ‘Q< 0.9’ lists the number of (and percentage) of residues with an average occupancy less than 0.9.

Mol	Chain	Analysed	<RSRZ>	#RSRZ>2	OWAB(Å <sup>2</sup> )	Q<0.9
1	A	409/422 (96%)	0.28	22 (5%) 29 32	27, 47, 73, 90	0
1	B	411/422 (97%)	-0.11	11 (2%) 58 61	21, 40, 64, 80	0
All	All	820/844 (97%)	0.08	33 (4%) 42 45	21, 43, 69, 90	0

All (33) RSRZ outliers are listed below:

Mol	Chain	Res	Type	RSRZ
1	A	299	ARG	6.0
1	A	488	PRO	4.7
1	A	715	VAL	4.5
1	B	300	PHE	4.4
1	A	355	PHE	4.3
1	A	351	LYS	3.8
1	A	507	GLN	3.5
1	A	716	TRP	3.3
1	A	300	PHE	3.1
1	A	490	GLY	2.9
1	A	348	VAL	2.8
1	A	352	ASP	2.8
1	B	619	ARG	2.8
1	A	349	ARG	2.7
1	B	301	LEU	2.7
1	B	620	LYS	2.7
1	A	712	ASN	2.6
1	B	611	ALA	2.6
1	B	351	LYS	2.5
1	A	487	GLN	2.5
1	A	503	GLU	2.4
1	B	615	ASP	2.4
1	B	348	VAL	2.4
1	A	486	LYS	2.4

*Continued on next page...*

*Continued from previous page...*

Mol	Chain	Res	Type	RSRZ
1	A	511	LYS	2.3
1	A	713	THR	2.2
1	A	489	ASP	2.2
1	A	550	LYS	2.2
1	B	352	ASP	2.2
1	B	715	VAL	2.2
1	A	714	HIS	2.1
1	A	567	VAL	2.1
1	B	616	LEU	2.1

## 6.2 Non-standard residues in protein, DNA, RNA chains [i](#)

There are no non-standard protein/DNA/RNA residues in this entry.

## 6.3 Carbohydrates [i](#)

There are no carbohydrates in this entry.

## 6.4 Ligands [i](#)

In the following table, the Atoms column lists the number of modelled atoms in the group and the number defined in the chemical component dictionary. LLDF column lists the quality of electron density of the group with respect to its neighbouring residues in protein, DNA or RNA chains. The B-factors column lists the minimum, median, 95<sup>th</sup> percentile and maximum values of B factors of atoms in the group. The column labelled 'Q< 0.9' lists the number of atoms with occupancy less than 0.9.

Mol	Type	Chain	Res	Atoms	RSCC	RSR	LLDF	B-factors(Å <sup>2</sup> )	Q<0.9
6	JI7	A	800	26/26	0.80	0.38	3.44	31,49,78,79	0
6	JI7	B	800	26/26	0.84	0.30	3.41	33,48,72,73	0
2	ACT	A	860	4/4	0.91	0.20	3.34	62,63,63,64	0
2	ACT	B	860	4/4	0.96	0.17	1.83	36,39,41,43	0
4	HEM	A	750	43/43	0.96	0.22	0.82	27,31,39,44	0
5	H4B	B	760	17/17	0.96	0.20	0.79	33,36,39,40	0
5	H4B	A	760	17/17	0.96	0.21	0.70	36,39,43,44	0
4	HEM	B	750	43/43	0.97	0.17	0.43	25,31,41,46	0
3	ZN	A	900	1/1	0.99	0.09	-1.40	38,38,38,38	0

## 6.5 Other polymers ⓘ

There are no such residues in this entry.