



# Full wwPDB X-ray Structure Validation Report ⓘ

Dec 15, 2016 – 02:54 PM EST

PDB ID : 2BEV  
Title : Reactivity modulation of human branched-chain alpha-ketoacid dehydrogenase by an internal molecular switch  
Authors : Machius, M.; Wynn, R.M.; Chuang, J.L.; Tomchick, D.R.; Brautigam, C.A.; Chuang, D.T.  
Deposited on : 2004-11-30  
Resolution : 1.80 Å(reported)

This is a Full wwPDB X-ray Structure Validation Report for a publicly released PDB entry.

We welcome your comments at [validation@mail.wwpdb.org](mailto:validation@mail.wwpdb.org)

A user guide is available at

<http://wwpdb.org/validation/2016/XrayValidationReportHelp>

with specific help available everywhere you see the ⓘ symbol.

---

The following versions of software and data (see [references ⓘ](#)) were used in the production of this report:

MolProbity : 4.02b-467  
Mogul : 1.7.1 (RC1), CSD as537be (2016)  
Xtriage (Phenix) : 1.9-1692  
EDS : rb-20028442  
Percentile statistics : 20151230.v01 (using entries in the PDB archive December 30th 2015)  
Refmac : 5.8.0135  
CCP4 : 6.5.0  
Ideal geometry (proteins) : Engh & Huber (2001)  
Ideal geometry (DNA, RNA) : Parkinson et al. (1996)  
Validation Pipeline (wwPDB-VP) : rb-20028442

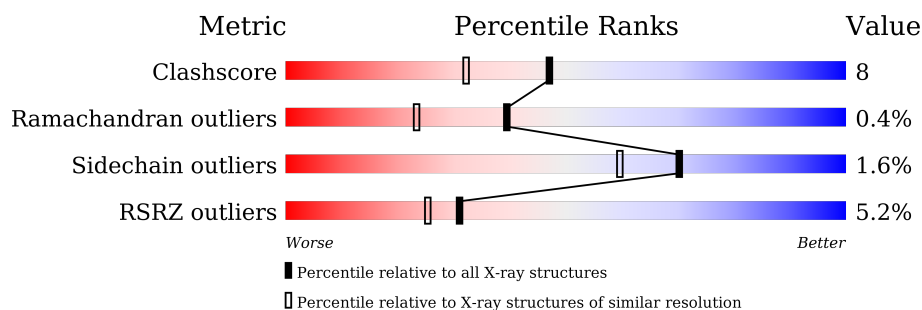
# 1 Overall quality at a glance

The following experimental techniques were used to determine the structure:

## *X-RAY DIFFRACTION*

The reported resolution of this entry is 1.80 Å.

Percentile scores (ranging between 0-100) for global validation metrics of the entry are shown in the following graphic. The table shows the number of entries on which the scores are based.



Metric	Whole archive (#Entries)	Similar resolution (#Entries, resolution range(Å))
Clashscore	102246	5383 (1.80-1.80)
Ramachandran outliers	100387	5320 (1.80-1.80)
Sidechain outliers	100360	5319 (1.80-1.80)
RSRZ outliers	91569	4547 (1.80-1.80)

The table below summarises the geometric issues observed across the polymeric chains and their fit to the electron density. The red, orange, yellow and green segments on the lower bar indicate the fraction of residues that contain outliers for  $\geq 3$ , 2, 1 and 0 types of geometric quality criteria. A grey segment represents the fraction of residues that are not modelled. The numeric value for each fraction is indicated below the corresponding segment, with a dot representing fractions  $\leq 5\%$ . The upper red bar (where present) indicates the fraction of residues that have poor fit to the electron density. The numeric value is given above the bar.

Mol	Chain	Length	Quality of chain
1	A	400	<div> <div>7%</div> <div>83%</div> <div>13%</div> <div>..</div> </div>
2	B	342	<div> <div>2%</div> <div>91%</div> <div>7%</div> <div>.</div> </div>
3	C	3	<div> <div>100%</div> <div>67%</div> <div>33%</div> </div>

The following table lists non-polymeric compounds, carbohydrate monomers and non-standard residues in protein, DNA, RNA chains that are outliers for geometric or electron-density-fit criteria:

Mol	Type	Chain	Res	Chirality	Geometry	Clashes	Electron density
8	GOL	B	1345	-	-	-	X

## 2 Entry composition

There are 9 unique types of molecules in this entry. The entry contains 6682 atoms, of which 0 are hydrogens and 0 are deuteriums.

In the tables below, the ZeroOcc column contains the number of atoms modelled with zero occupancy, the AltConf column contains the number of residues with at least one atom in alternate conformation and the Trace column contains the number of residues modelled with at most 2 atoms.

- Molecule 1 is a protein called 2-OXOISOVALERATE DEHYDROGENASE ALPHA SUB-UNIT.

Mol	Chain	Residues	Atoms					ZeroOcc	AltConf	Trace
1	A	390	Total	C	N	O	S	0	13	0
			3237	2038	577	601	21			

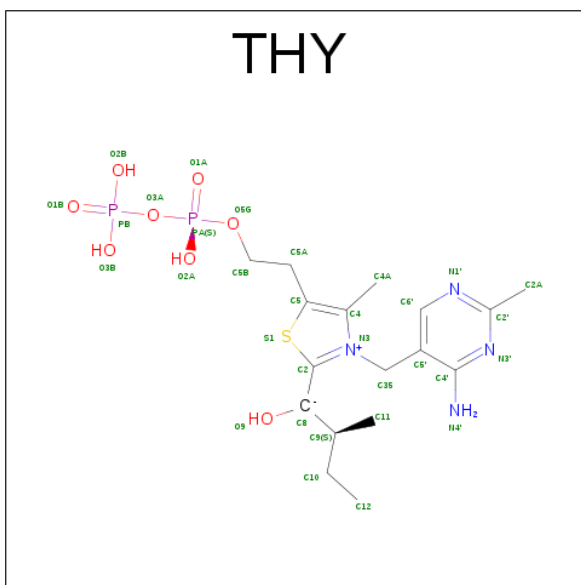
- Molecule 2 is a protein called 2-OXOISOVALERATE DEHYDROGENASE BETA SUB-UNIT.

Mol	Chain	Residues	Atoms					ZeroOcc	AltConf	Trace
2	B	336	Total	C	N	O	S	0	7	0
			2675	1723	440	497	15			

- Molecule 3 is a protein called PEPTIDE ALA-TYR-ARG.

Mol	Chain	Residues	Atoms				ZeroOcc	AltConf	Trace
3	C	3	Total	C	N	O	0	0	0
			28	18	6	4			

- Molecule 4 is C2-1-HYDROXY-2-METHYL-BUTYL-THIAMIN DIPHOSPHATE (three-letter code: THY) (formula: C<sub>17</sub>H<sub>28</sub>N<sub>4</sub>O<sub>8</sub>P<sub>2</sub>S).



Mol	Chain	Residues	Atoms						ZeroOcc	AltConf
4	A	1	Total	C	N	O	P	S	0	0
			32	17	4	8	2	1		

- Molecule 5 is POTASSIUM ION (three-letter code: K) (formula: K).

Mol	Chain	Residues	Atoms	ZeroOcc	AltConf
5	B	1	Total K 1 1	0	0
5	A	1	Total K 1 1	0	0

- Molecule 6 is MANGANESE (II) ION (three-letter code: MN) (formula: Mn).

Mol	Chain	Residues	Atoms	ZeroOcc	AltConf
6	A	1	Total Mn 1 1	0	0

- Molecule 7 is CHLORIDE ION (three-letter code: CL) (formula: Cl).

Mol	Chain	Residues	Atoms	ZeroOcc	AltConf
7	B	1	Total Cl 1 1	0	0
7	A	1	Total Cl 1 1	0	0

- Molecule 8 is GLYCEROL (three-letter code: GOL) (formula:  $\text{C}_3\text{H}_8\text{O}_3$ ).



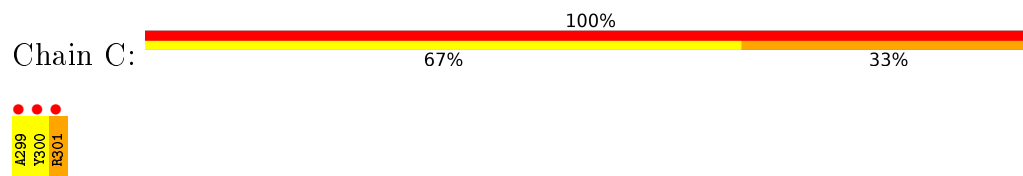
Mol	Chain	Residues	Atoms			ZeroOcc	AltConf
8	B	1	Total	C	O	0	0
			6	3	3		
8	B	1	Total	C	O	0	0
			6	3	3		

- Molecule 9 is water.

Mol	Chain	Residues	Atoms		ZeroOcc	AltConf
9	A	381	Total	O	0	0
			381	381		
9	B	308	Total	O	0	0
			308	308		
9	C	4	Total	O	0	0
			4	4		



• Molecule 1: 2-OXISOVALERATE DEHYDROGENASE ALPHA SUBUNIT



## 4 Data and refinement statistics

Property	Value	Source
Space group	P 31 2 1	Depositor
Cell constants a, b, c, $\alpha$ , $\beta$ , $\gamma$	144.47Å 144.47Å 69.48Å 90.00° 90.00° 120.00°	Depositor
Resolution (Å)	30.00 – 1.80 32.05 – 1.80	Depositor EDS
% Data completeness (in resolution range)	100.0 (30.00-1.80) 100.0 (32.05-1.80)	Depositor EDS
$R_{merge}$	0.09	Depositor
$R_{sym}$	(Not available)	Depositor
$\langle I/\sigma(I) \rangle$ <sup>1</sup>	2.99 (at 1.80Å)	Xtriage
Refinement program	REFMAC 5.2.0003	Depositor
R, $R_{free}$	0.138 , 0.170 0.157 , (Not available)	Depositor DCC
$R_{free}$ test set	No test flags present.	DCC
Wilson B-factor (Å <sup>2</sup> )	14.3	Xtriage
Anisotropy	0.509	Xtriage
Bulk solvent $k_{sol}$ (e/Å <sup>3</sup> ), $B_{sol}$ (Å <sup>2</sup> )	0.39 , 58.5	EDS
L-test for twinning <sup>2</sup>	$\langle  L  \rangle = 0.50$ , $\langle L^2 \rangle = 0.33$	Xtriage
Estimated twinning fraction	0.023 for -h,-k,l	Xtriage
$F_o, F_c$ correlation	0.96	EDS
Total number of atoms	6682	wwPDB-VP
Average B, all atoms (Å <sup>2</sup> )	13.0	wwPDB-VP

Xtriage's analysis on translational NCS is as follows: *The largest off-origin peak in the Patterson function is 3.36% of the height of the origin peak. No significant pseudotranslation is detected.*

<sup>1</sup>Intensities estimated from amplitudes.

<sup>2</sup>Theoretical values of  $\langle |L| \rangle$ ,  $\langle L^2 \rangle$  for acentric reflections are 0.5, 0.333 respectively for untwinned datasets, and 0.375, 0.2 for perfectly twinned datasets.

## 5 Model quality ⓘ

### 5.1 Standard geometry ⓘ

Bond lengths and bond angles in the following residue types are not validated in this section: GOL, K, MN, THY, CL

The Z score for a bond length (or angle) is the number of standard deviations the observed value is removed from the expected value. A bond length (or angle) with  $|Z| > 5$  is considered an outlier worth inspection. RMSZ is the root-mean-square of all Z scores of the bond lengths (or angles).

Mol	Chain	Bond lengths		Bond angles	
		RMSZ	$\# Z  > 5$	RMSZ	$\# Z  > 5$
1	A	0.91	0/3316	0.88	7/4479 (0.2%)
2	B	0.92	0/2744	0.88	2/3728 (0.1%)
3	C	0.84	0/28	1.09	0/36
All	All	0.92	0/6088	0.88	9/8243 (0.1%)

There are no bond length outliers.

All (9) bond angle outliers are listed below:

Mol	Chain	Res	Type	Atoms	Z	Observed(°)	Ideal(°)
1	A	82	ARG	NE-CZ-NH2	-7.99	116.31	120.30
2	B	123	ASP	CB-CG-OD2	6.06	123.75	118.30
1	A	18	ASP	CB-CG-OD2	5.63	123.37	118.30
1	A	287	ARG	NE-CZ-NH2	-5.32	117.64	120.30
2	B	61	ARG	NE-CZ-NH1	5.30	122.95	120.30
1	A	180	ARG	NE-CZ-NH2	-5.21	117.69	120.30
1	A	313	ASP	CB-CG-OD2	5.08	122.87	118.30
1	A	104[A]	ASP	CB-CG-OD2	5.07	122.86	118.30
1	A	104[B]	ASP	CB-CG-OD2	5.07	122.86	118.30

There are no chirality outliers.

There are no planarity outliers.

### 5.2 Too-close contacts ⓘ

In the following table, the Non-H and H(model) columns list the number of non-hydrogen atoms and hydrogen atoms in the chain respectively. The H(added) column lists the number of hydrogen atoms added and optimized by MolProbity. The Clashes column lists the number of clashes within the asymmetric unit, whereas Symm-Clashes lists symmetry related clashes.



Mol	Chain	Non-H	H(model)	H(added)	Clashes	Symm-Clashes
1	A	3237	0	3121	71	0
2	B	2675	0	2620	18	0
3	C	28	0	26	11	0
4	A	32	0	3	1	0
5	A	1	0	0	0	0
5	B	1	0	0	0	0
6	A	1	0	0	0	0
7	A	1	0	0	0	0
7	B	1	0	0	0	0
8	B	12	0	16	0	0
9	A	381	0	0	15	0
9	B	308	0	0	5	0
9	C	4	0	0	1	0
All	All	6682	0	5786	89	0

The all-atom clashscore is defined as the number of clashes found per 1000 atoms (including hydrogen atoms). The all-atom clashscore for this structure is 8.

All (89) close contacts within the same asymmetric unit are listed below, sorted by their clash magnitude.

Atom-1	Atom-2	Interatomic distance (Å)	Clash overlap (Å)
1:A:294:SER:HB3	3:C:300:TYR:CD1	1.62	1.35
1:A:294:SER:CB	3:C:300:TYR:CD1	2.28	1.16
1:A:294:SER:CB	3:C:300:TYR:HD1	1.65	1.09
1:A:294:SER:O	3:C:301:ARG:HA	1.64	0.98
1:A:294:SER:HB3	3:C:300:TYR:HD1	0.82	0.95
2:B:19:GLN:HG3	9:B:2029:HOH:O	1.68	0.94
1:A:294:SER:HB2	3:C:300:TYR:CE1	2.06	0.91
2:B:126:ASN:HD22	2:B:128:GLY:H	1.17	0.87
1:A:285[A]:THR:HG23	1:A:286:TYR:N	1.92	0.84
1:A:64[A]:MET:SD	1:A:316:ILE:HG12	2.18	0.82
1:A:146[A]:MET:CE	9:A:2195:HOH:O	2.29	0.81
1:A:294:SER:HB2	3:C:300:TYR:CD1	2.16	0.79
1:A:294:SER:O	3:C:301:ARG:CA	2.33	0.76
2:B:232:HIS:HD2	2:B:235:ARG:HH22	1.31	0.75
1:A:146[A]:MET:HE3	9:A:2195:HOH:O	1.86	0.73
2:B:232:HIS:CD2	2:B:235:ARG:HH22	2.06	0.73
1:A:185:ARG:HG2	9:A:2205:HOH:O	1.94	0.67
1:A:64[B]:MET:HE2	1:A:319:LEU:CD2	2.25	0.67
2:B:19:GLN:CG	9:B:2029:HOH:O	2.34	0.66
2:B:166:ARG:O	2:B:232:HIS:HE1	1.79	0.66
1:A:290:HIS:HD2	1:A:297:SER:H	1.42	0.65

*Continued on next page...*

*Continued from previous page...*

Atom-1	Atom-2	Interatomic distance (Å)	Clash overlap (Å)
2:B:195:ARG:NE	9:B:2190:HOH:O	2.29	0.64
1:A:64[A]:MET:CE	1:A:316:ILE:HG12	2.28	0.64
1:A:146[A]:MET:HE2	9:A:2195:HOH:O	1.95	0.63
1:A:64[B]:MET:CE	1:A:319:LEU:HD23	2.28	0.62
1:A:61:TYR:O	1:A:64[A]:MET:HG2	2.00	0.61
2:B:19:GLN:HB2	2:B:203:ILE:HD11	1.83	0.61
2:B:232:HIS:HD2	2:B:235:ARG:NH2	1.97	0.61
1:A:185:ARG:CD	9:A:2205:HOH:O	2.48	0.60
1:A:74:LEU:HD21	1:A:130[A]:MET:SD	2.44	0.58
1:A:105:ASN:ND2	9:A:2126:HOH:O	2.34	0.58
1:A:351:GLN:HG2	1:A:355[A]:LYS:HE3	1.86	0.56
1:A:64[B]:MET:CE	1:A:319:LEU:CD2	2.82	0.56
1:A:185:ARG:HD3	9:A:2205:HOH:O	2.05	0.56
1:A:35[B]:ARG:HB3	9:A:2038:HOH:O	2.06	0.55
1:A:359:ASN:HD22	1:A:400:LYS:HD3	1.72	0.55
1:A:64[A]:MET:HE2	1:A:316:ILE:HG12	1.88	0.54
1:A:290:HIS:CD2	1:A:297:SER:H	2.23	0.54
1:A:64[B]:MET:HE2	1:A:319:LEU:HD23	1.89	0.54
1:A:359:ASN:ND2	1:A:400:LYS:HB2	2.23	0.54
2:B:19:GLN:CD	9:B:2029:HOH:O	2.45	0.53
1:A:384:ARG:HA	1:A:387:GLN:HE21	1.74	0.52
1:A:96:HIS:CD2	1:A:117:GLY:H	2.28	0.52
1:A:210[A]:THR:HG22	1:A:211:LEU:HG	1.92	0.52
1:A:29:SER:HB3	9:A:2010:HOH:O	2.10	0.52
1:A:376:ARG:NH1	9:A:2346:HOH:O	2.41	0.51
1:A:351:GLN:CG	1:A:355[A]:LYS:HE3	2.40	0.51
1:A:64[A]:MET:SD	1:A:316:ILE:HA	2.51	0.50
1:A:64[B]:MET:HE2	1:A:319:LEU:HD22	1.93	0.50
3:C:299:ALA:HA	9:C:2001:HOH:O	2.11	0.50
1:A:185:ARG:CG	9:A:2205:HOH:O	2.57	0.50
1:A:363:LEU:HD22	1:A:364:PHE:CE2	2.47	0.49
1:A:170:GLN:O	2:B:85:GLY:HA3	2.12	0.49
1:A:29:SER:CB	9:A:2010:HOH:O	2.60	0.49
1:A:64[A]:MET:HE2	1:A:316:ILE:CG1	2.41	0.49
1:A:210[A]:THR:CG2	1:A:211:LEU:HG	2.43	0.49
1:A:363:LEU:C	1:A:363:LEU:HD23	2.34	0.48
1:A:294:SER:HB2	3:C:300:TYR:HE1	1.71	0.47
1:A:82:ARG:HD3	1:A:353:GLU:OE2	2.15	0.47
2:B:232:HIS:CD2	2:B:235:ARG:HH12	2.33	0.47
1:A:186[A]:VAL:CG2	1:A:273[A]:VAL:HB	2.45	0.47
1:A:64[A]:MET:CE	1:A:316:ILE:CG1	2.93	0.46

*Continued on next page...*

*Continued from previous page...*

Atom-1	Atom-2	Interatomic distance (Å)	Clash overlap (Å)
1:A:146[A]:MET:HG3	1:A:149:HIS:CE1	2.50	0.46
1:A:64[A]:MET:CG	1:A:316:ILE:HG12	2.46	0.46
1:A:384:ARG:HD3	9:A:2358:HOH:O	2.16	0.45
1:A:39:ARG:HH21	1:A:312:GLN:HB3	1.81	0.45
1:A:73:ILE:HD12	1:A:345:VAL:HG11	1.98	0.45
2:B:237:VAL:HG21	2:B:332:CYS:HB2	1.99	0.45
1:A:24:GLN:HB3	1:A:24:GLN:HE21	1.57	0.44
1:A:387:GLN:NE2	9:A:2361:HOH:O	2.50	0.43
2:B:37:LYS:HE3	9:B:2178:HOH:O	2.19	0.43
1:A:359:ASN:HD22	1:A:400:LYS:CD	2.31	0.43
1:A:294:SER:CB	3:C:300:TYR:CE1	2.71	0.43
1:A:146[A]:MET:CG	1:A:149:HIS:CE1	3.02	0.42
1:A:242:ARG:HD3	9:A:2245:HOH:O	2.19	0.42
1:A:6:LYS:HA	1:A:7:PRO:HD3	1.91	0.42
1:A:96:HIS:CE1	1:A:114:ARG:O	2.73	0.42
1:A:359:ASN:HD22	1:A:400:LYS:HB2	1.83	0.42
2:B:55:ARG:HD2	2:B:195:ARG:HH21	1.84	0.42
1:A:363:LEU:O	1:A:363:LEU:HD23	2.20	0.42
1:A:85:PHE:CE2	1:A:87:MET:HG3	2.55	0.41
1:A:226:ILE:HG13	4:A:601:THY:H71	2.02	0.41
2:B:279:HIS:O	2:B:311:CYS:HA	2.19	0.41
1:A:275:GLU:OE1	1:A:277:GLN:NE2	2.50	0.41
2:B:164:ILE:HG12	2:B:188:PHE:HB2	2.02	0.40
1:A:73:ILE:HD12	1:A:345:VAL:CG1	2.52	0.40
1:A:64[A]:MET:SD	1:A:319:LEU:HD23	2.62	0.40
2:B:102:TYR:HH	2:B:146[A]:HIS:CE1	2.39	0.40

There are no symmetry-related clashes.

## 5.3 Torsion angles [i](#)

### 5.3.1 Protein backbone [i](#)

In the following table, the Percentiles column shows the percent Ramachandran outliers of the chain as a percentile score with respect to all X-ray entries followed by that with respect to entries of similar resolution.

The Analysed column shows the number of residues for which the backbone conformation was analysed, and the total number of residues.

Mol	Chain	Analysed	Favoured	Allowed	Outliers	Percentiles	
1	A	399/400 (100%)	389 (98%)	7 (2%)	3 (1%)	24	8
2	B	339/342 (99%)	330 (97%)	9 (3%)	0	100	100
3	C	1/3 (33%)	1 (100%)	0	0	100	100
All	All	739/745 (99%)	720 (97%)	16 (2%)	3 (0%)	39	23

All (3) Ramachandran outliers are listed below:

Mol	Chain	Res	Type
1	A	113	TYR
1	A	148	VAL
1	A	226	ILE

### 5.3.2 Protein sidechains ⓘ

In the following table, the Percentiles column shows the percent sidechain outliers of the chain as a percentile score with respect to all X-ray entries followed by that with respect to entries of similar resolution.

The Analysed column shows the number of residues for which the sidechain conformation was analysed, and the total number of residues.

Mol	Chain	Analysed	Rotameric	Outliers	Percentiles	
1	A	339/336 (101%)	332 (98%)	7 (2%)	61	47
2	B	290/289 (100%)	287 (99%)	3 (1%)	82	77
3	C	2/2 (100%)	1 (50%)	1 (50%)	0	0
All	All	631/627 (101%)	620 (98%)	11 (2%)	70	57

All (11) residues with a non-rotameric sidechain are listed below:

Mol	Chain	Res	Type
1	A	24	GLN
1	A	29	SER
1	A	210[A]	THR
1	A	210[B]	THR
1	A	269	ARG
1	A	363	LEU
1	A	376	ARG
2	B	50	PHE
2	B	117	TYR
2	B	296	GLN

*Continued on next page...*

*Continued from previous page...*

Mol	Chain	Res	Type
3	C	301	ARG

Some sidechains can be flipped to improve hydrogen bonding and reduce clashes. All (11) such sidechains are listed below:

Mol	Chain	Res	Type
1	A	24	GLN
1	A	96	HIS
1	A	105	ASN
1	A	184	ASN
1	A	233	GLN
1	A	290	HIS
1	A	387	GLN
2	B	17	GLN
2	B	126	ASN
2	B	232	HIS
2	B	296	GLN

### 5.3.3 RNA [i](#)

There are no RNA molecules in this entry.

## 5.4 Non-standard residues in protein, DNA, RNA chains [i](#)

There are no non-standard protein/DNA/RNA residues in this entry.

## 5.5 Carbohydrates [i](#)

There are no carbohydrates in this entry.

## 5.6 Ligand geometry [i](#)

Of 8 ligands modelled in this entry, 5 are monoatomic - leaving 3 for Mogul analysis.

In the following table, the Counts columns list the number of bonds (or angles) for which Mogul statistics could be retrieved, the number of bonds (or angles) that are observed in the model and the number of bonds (or angles) that are defined in the chemical component dictionary. The Link column lists molecule types, if any, to which the group is linked. The Z score for a bond length (or angle) is the number of standard deviations the observed value is removed from the expected value. A bond length (or angle) with  $|Z| > 2$  is considered an outlier worth inspection. RMSZ is the root-mean-square of all Z scores of the bond lengths (or angles).

Mol	Type	Chain	Res	Link	Bond lengths			Bond angles		
					Counts	RMSZ	# Z  > 2	Counts	RMSZ	# Z  > 2
4	THY	A	601	6	26,33,33	2.28	7 (26%)	32,49,49	2.03	11 (34%)
8	GOL	B	1344	-	5,5,5	0.23	0	5,5,5	0.33	0
8	GOL	B	1345	-	5,5,5	0.47	0	5,5,5	0.60	0

In the following table, the Chirals column lists the number of chiral outliers, the number of chiral centers analysed, the number of these observed in the model and the number defined in the chemical component dictionary. Similar counts are reported in the Torsion and Rings columns. '-' means no outliers of that kind were identified.

Mol	Type	Chain	Res	Link	Chirals	Torsions	Rings
4	THY	A	601	6	-	0/22/27/27	0/2/2/2
8	GOL	B	1344	-	-	0/4/4/4	0/0/0/0
8	GOL	B	1345	-	-	0/4/4/4	0/0/0/0

All (7) bond length outliers are listed below:

Mol	Chain	Res	Type	Atoms	Z	Observed(Å)	Ideal(Å)
4	A	601	THY	O9-C8	-8.15	1.26	1.42
4	A	601	THY	PB-O2B	2.24	1.62	1.54
4	A	601	THY	C6'-C5'	2.30	1.42	1.37
4	A	601	THY	C2'-N3'	2.47	1.38	1.34
4	A	601	THY	C4A-C4	2.63	1.55	1.49
4	A	601	THY	C35-C5'	2.76	1.57	1.51
4	A	601	THY	C4'-N3'	4.68	1.42	1.35

All (11) bond angle outliers are listed below:

Mol	Chain	Res	Type	Atoms	Z	Observed(°)	Ideal(°)
4	A	601	THY	C4A-C4-C5	-3.48	121.55	128.91
4	A	601	THY	N1'-C2'-N3'	-3.11	119.66	125.50
4	A	601	THY	C5'-C6'-N1'	-2.90	118.80	123.86
4	A	601	THY	N4'-C4'-N3'	-2.41	113.39	116.92
4	A	601	THY	C5'-C35-N3	-2.31	109.31	113.37
4	A	601	THY	O3B-PB-O2B	2.70	117.37	107.44
4	A	601	THY	C5-C4-N3	2.72	114.30	107.94
4	A	601	THY	C5A-C5-C4	2.89	130.59	127.34
4	A	601	THY	O9-C8-C9	3.15	117.25	110.08
4	A	601	THY	C2A-C2'-N1'	4.34	122.41	117.05
4	A	601	THY	C6'-N1'-C2'	4.57	124.62	115.92

There are no chirality outliers.

There are no torsion outliers.

There are no ring outliers.

1 monomer is involved in 1 short contact:

Mol	Chain	Res	Type	Clashes	Symm-Clashes
4	A	601	THY	1	0

## 5.7 Other polymers [i](#)

There are no such residues in this entry.

## 5.8 Polymer linkage issues [i](#)

There are no chain breaks in this entry.

## 6 Fit of model and data

### 6.1 Protein, DNA and RNA chains

In the following table, the column labelled ‘#RSRZ> 2’ contains the number (and percentage) of RSRZ outliers, followed by percent RSRZ outliers for the chain as percentile scores relative to all X-ray entries and entries of similar resolution. The OWAB column contains the minimum, median, 95<sup>th</sup> percentile and maximum values of the occupancy-weighted average B-factor per residue. The column labelled ‘Q< 0.9’ lists the number of (and percentage) of residues with an average occupancy less than 0.9.

Mol	Chain	Analysed	<RSRZ>	#RSRZ>2	OWAB(Å <sup>2</sup> )	Q<0.9
1	A	390/400 (97%)	-0.01	27 (6%) 20 16	4, 10, 27, 42	0
2	B	336/342 (98%)	-0.41	8 (2%) 62 57	3, 8, 20, 40	0
3	C	3/3 (100%)	3.92	3 (100%) 0 0	31, 31, 34, 36	0
All	All	729/745 (97%)	-0.18	38 (5%) 31 25	3, 9, 25, 42	0

All (38) RSRZ outliers are listed below:

Mol	Chain	Res	Type	RSRZ
1	A	308	TYR	5.7
1	A	299	ALA	5.2
2	B	7	GLN	4.8
3	C	299	ALA	4.7
1	A	298	SER	4.4
1	A	312	GLN	4.4
1	A	300	TYR	4.2
1	A	309	TRP	3.9
3	C	301	ARG	3.7
1	A	183	ALA	3.7
1	A	64[A]	MET	3.6
1	A	6	LYS	3.6
1	A	28	ILE	3.6
1	A	182	ASN	3.4
3	C	300	TYR	3.4
1	A	400	LYS	3.3
1	A	294	SER	3.1
1	A	307	ASN	3.0
1	A	387	GLN	3.0
1	A	311	LYS	2.9
1	A	396	ASP	2.8
1	A	29	SER	2.8
2	B	301	LEU	2.7

*Continued on next page...*



*Continued from previous page...*

Mol	Chain	Res	Type	RSRZ
2	B	15	TYR	2.7
1	A	26	ASN	2.5
1	A	297	SER	2.5
2	B	14	GLU	2.4
2	B	5	THR	2.4
1	A	296	ASP	2.3
1	A	310	ASP	2.3
1	A	397	HIS	2.2
1	A	184	ASN	2.2
2	B	6	PHE	2.1
1	A	335	LYS	2.1
1	A	27	VAL	2.1
2	B	195	ARG	2.0
2	B	246	GLY	2.0
1	A	290	HIS	2.0

## 6.2 Non-standard residues in protein, DNA, RNA chains [i](#)

There are no non-standard protein/DNA/RNA residues in this entry.

## 6.3 Carbohydrates [i](#)

There are no carbohydrates in this entry.

## 6.4 Ligands [i](#)

In the following table, the Atoms column lists the number of modelled atoms in the group and the number defined in the chemical component dictionary. LLDF column lists the quality of electron density of the group with respect to its neighbouring residues in protein, DNA or RNA chains. The B-factors column lists the minimum, median, 95<sup>th</sup> percentile and maximum values of B factors of atoms in the group. The column labelled 'Q< 0.9' lists the number of atoms with occupancy less than 0.9.

Mol	Type	Chain	Res	Atoms	RSCC	RSR	LLDF	B-factors( $\text{\AA}^2$ )	Q<0.9
8	GOL	B	1345	6/6	0.94	0.22	3.25	17,29,30,33	0
7	CL	B	1343	1/1	0.98	0.08	-0.22	18,18,18,18	0
8	GOL	B	1344	6/6	0.98	0.07	-0.64	8,9,11,13	0
4	THY	A	601	32/32	0.98	0.07	-1.31	2,2,15,16	0
6	MN	A	1403	1/1	1.00	0.05	-1.58	6,6,6,6	0
5	K	B	1346	1/1	0.99	0.06	-1.64	16,16,16,16	0

*Continued on next page...*

*Continued from previous page...*

Mol	Type	Chain	Res	Atoms	RSCC	RSR	LLDF	B-factors( $\text{\AA}^2$ )	Q<0.9
5	K	A	1402	1/1	1.00	0.03	-5.37	12,12,12,12	0
7	CL	A	1404	1/1	0.95	0.03	-	65,65,65,65	0

## 6.5 Other polymers [i](#)

There are no such residues in this entry.