



# Full wwPDB X-ray Structure Validation Report ⓘ

Jan 31, 2016 – 06:36 PM GMT

PDB ID : 1BLC  
Title : INHIBITION OF BETA-LACTAMASE BY CLAVULANATE: TRAPPED INTERMEDIATES IN CRYOCRYSTALLOGRAPHIC STUDIES  
Authors : Chen, C.C.H.; Herzberg, O.  
Deposited on : 1993-09-27  
Resolution : 2.20 Å(reported)

This is a Full wwPDB X-ray Structure Validation Report for a publicly released PDB entry.  
We welcome your comments at [validation@mail.wwpdb.org](mailto:validation@mail.wwpdb.org)  
A user guide is available at  
<http://wwpdb.org/validation/2016/XrayValidationReportHelp>  
with specific help available everywhere you see the ⓘ symbol.

---

The following versions of software and data (see [references ⓘ](#)) were used in the production of this report:

MolProbity : 4.02b-467  
Mogul : 1.7 (RC4), CSD as536be (2015)  
Xtriage (Phenix) : **NOT EXECUTED**  
EDS : **NOT EXECUTED**  
Percentile statistics : 20151230.v01 (using entries in the PDB archive December 30th 2015)  
Ideal geometry (proteins) : Engh & Huber (2001)  
Ideal geometry (DNA, RNA) : Parkinson et al. (1996)  
Validation Pipeline (wwPDB-VP) : trunk26865

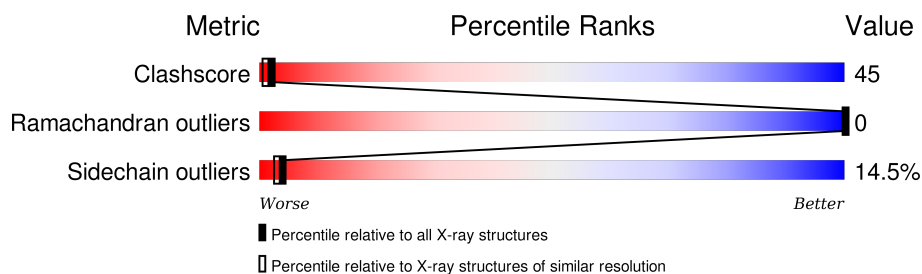
# 1 Overall quality at a glance

The following experimental techniques were used to determine the structure:

## *X-RAY DIFFRACTION*

The reported resolution of this entry is 2.20 Å.

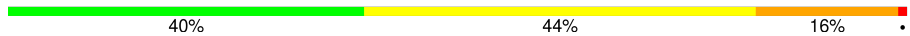
Percentile scores (ranging between 0-100) for global validation metrics of the entry are shown in the following graphic. The table shows the number of entries on which the scores are based.



Metric	Whole archive (#Entries)	Similar resolution (#Entries, resolution range(Å))
Clashscore	102246	4477 (2.20-2.20)
Ramachandran outliers	100387	4404 (2.20-2.20)
Sidechain outliers	100360	4405 (2.20-2.20)

The table below summarises the geometric issues observed across the polymeric chains and their fit to the electron density. The red, orange, yellow and green segments on the lower bar indicate the fraction of residues that contain outliers for  $\geq 3$ , 2, 1 and 0 types of geometric quality criteria. A grey segment represents the fraction of residues that are not modelled. The numeric value for each fraction is indicated below the corresponding segment, with a dot representing fractions  $\leq 5\%$ . The upper red bar (where present) indicates the fraction of residues that have poor fit to the electron density. The numeric value is given above the bar.

Note EDS was not executed.

Mol	Chain	Length	Quality of chain
1	A	257	

The following table lists non-polymeric compounds, carbohydrate monomers and non-standard residues in protein, DNA, RNA chains that are outliers for geometric or electron-density-fit criteria:

Mol	Type	Chain	Res	Chirality	Geometry	Clashes	Electron density
3	CEM	A	301[A]	X	-	X	-
4	TEM	A	626[B]	X	-	-	-

## 2 Entry composition [i](#)

There are 5 unique types of molecules in this entry. The entry contains 2384 atoms, of which 0 are hydrogens and 0 are deuteriums.

In the tables below, the ZeroOcc column contains the number of atoms modelled with zero occupancy, the AltConf column contains the number of residues with at least one atom in alternate conformation and the Trace column contains the number of residues modelled with at most 2 atoms.

- Molecule 1 is a protein called BETA-LACTAMASE.

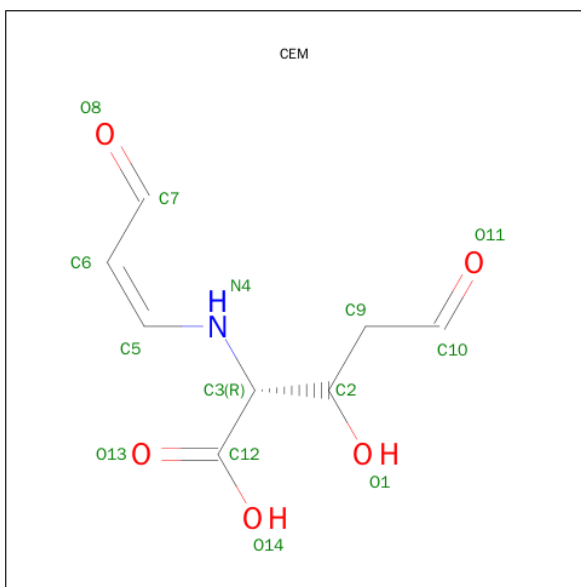
Mol	Chain	Residues	Atoms					ZeroOcc	AltConf	Trace
1	A	257	Total	C	N	O	S	0	1	0
			2030	1293	341	393	3			

- Molecule 2 is SULFATE ION (three-letter code: SO4) (formula: O<sub>4</sub>S).



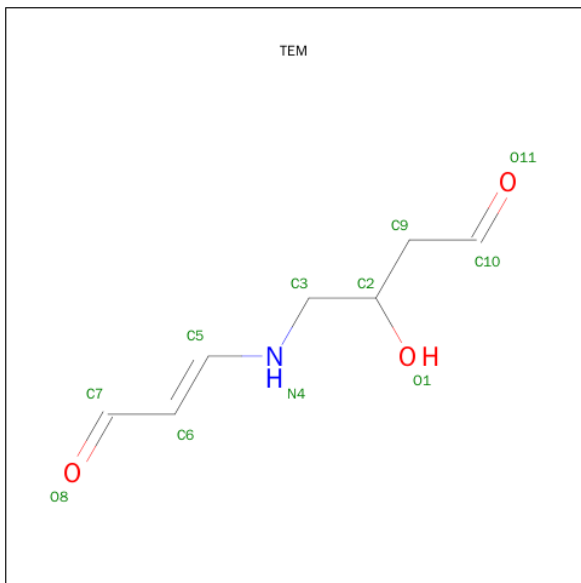
Mol	Chain	Residues	Atoms			ZeroOcc	AltConf
2	A	1	Total	O	S	0	0
			5	4	1		

- Molecule 3 is N-(1-CARBOXY-2-HYDROXY-4-OXO-BUTYL)-N-(3-OXO-CISPROPENYL)AMINE (three-letter code: CEM) (formula: C<sub>8</sub>H<sub>11</sub>NO<sub>5</sub>).



Mol	Chain	Residues	Atoms				ZeroOcc	AltConf
3	A	1	Total	C	N	O	0	1
			14	8	1	5		

- Molecule 4 is N-(2-HYDROXY-4-OXO-BUTYL)-N-(3-OXO-TRANSPROPENYL)AMINE (three-letter code: TEM) (formula:  $C_7H_{11}NO_3$ ).



Mol	Chain	Residues	Atoms				ZeroOcc	AltConf
4	A	1	Total	C	N	O	0	1
			11	7	1	3		

- Molecule 5 is water.

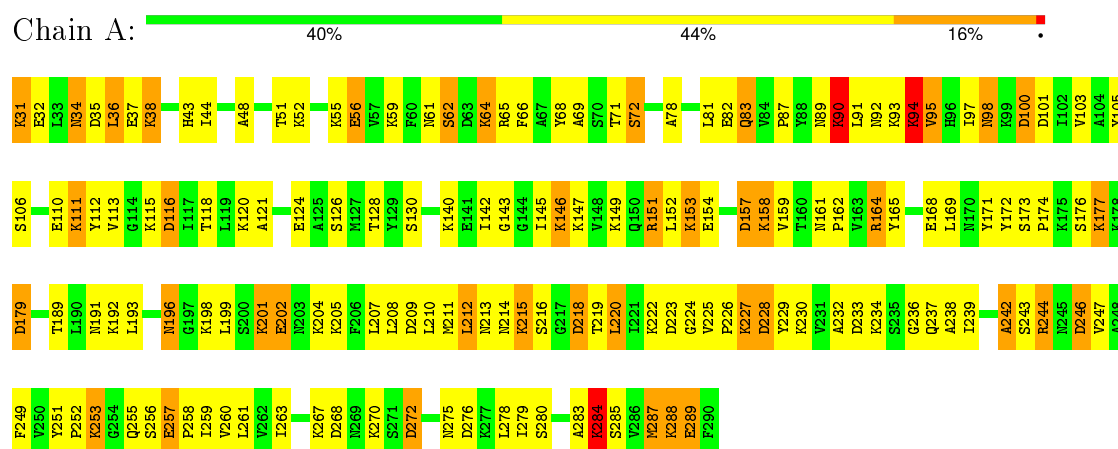
Mol	Chain	Residues	Atoms		ZeroOcc	AltConf
5	A	324	Total 324	O 324	0	0

### 3 Residue-property plots

These plots are drawn for all protein, RNA and DNA chains in the entry. The first graphic for a chain summarises the proportions of errors displayed in the second graphic. The second graphic shows the sequence view annotated by issues in geometry and electron density. Residues are color-coded according to the number of geometric quality criteria for which they contain at least one outlier: green = 0, yellow = 1, orange = 2 and red = 3 or more. A red dot above a residue indicates a poor fit to the electron density ( $RSRZ > 2$ ). Stretches of 2 or more consecutive residues without any outlier are shown as a green connector. Residues present in the sample, but not in the model, are shown in grey.

Note EDS was not executed.

#### • Molecule 1: BETA-LACTAMASE



## 4 Data and refinement statistics

Xtriage (Phenix) and EDS were not executed - this section will therefore be incomplete.

Property	Value	Source
Space group	I 2 2 2	Depositor
Cell constants a, b, c, $\alpha$ , $\beta$ , $\gamma$	54.10 Å 88.00 Å 141.30 Å 90.00° 90.00° 90.00°	Depositor
Resolution (Å)	6.00 – 2.20	Depositor
% Data completeness (in resolution range)	(Not available) (6.00-2.20)	Depositor
$R_{merge}$	(Not available)	Depositor
$R_{sym}$	(Not available)	Depositor
Refinement program	PROLSQ	Depositor
R, $R_{free}$	0.179 , (Not available)	Depositor
Estimated twinning fraction	No twinning to report.	Xtriage
Total number of atoms	2384	wwPDB-VP
Average B, all atoms (Å <sup>2</sup> )	20.0	wwPDB-VP

## 5 Model quality

### 5.1 Standard geometry

Bond lengths and bond angles in the following residue types are not validated in this section: CEM, SO4, TEM

The Z score for a bond length (or angle) is the number of standard deviations the observed value is removed from the expected value. A bond length (or angle) with  $|Z| > 5$  is considered an outlier worth inspection. RMSZ is the root-mean-square of all Z scores of the bond lengths (or angles).

Mol	Chain	Bond lengths		Bond angles	
		RMSZ	$\# Z  > 5$	RMSZ	$\# Z  > 5$
1	A	1.23	0/2065	1.91	50/2772 (1.8%)

Chiral center outliers are detected by calculating the chiral volume of a chiral center and verifying if the center is modelled as a planar moiety or with the opposite hand. A planarity outlier is detected by checking planarity of atoms in a peptide group, atoms in a mainchain group or atoms of a sidechain that are expected to be planar.

Mol	Chain	#Chirality outliers	#Planarity outliers
1	A	0	1

There are no bond length outliers.

All (50) bond angle outliers are listed below:

Mol	Chain	Res	Type	Atoms	Z	Observed( $^{\circ}$ )	Ideal( $^{\circ}$ )
1	A	164	ARG	NE-CZ-NH1	12.82	126.71	120.30
1	A	35	ASP	CB-CG-OD1	-12.03	107.47	118.30
1	A	94	LYS	CA-CB-CG	10.88	137.34	113.40
1	A	244	ARG	NE-CZ-NH2	-10.67	114.97	120.30
1	A	276	ASP	CB-CG-OD2	-10.13	109.19	118.30
1	A	56	GLU	OE1-CD-OE2	-10.03	111.27	123.30
1	A	100	ASP	CB-CG-OD2	-9.35	109.89	118.30
1	A	100	ASP	CB-CG-OD1	8.99	126.39	118.30
1	A	164	ARG	NE-CZ-NH2	-8.79	115.91	120.30
1	A	56	GLU	CG-CD-OE2	8.29	134.87	118.30
1	A	179	ASP	CB-CG-OD2	7.73	125.25	118.30
1	A	35	ASP	CB-CA-C	7.57	125.54	110.40
1	A	202	GLU	CG-CD-OE1	7.40	133.10	118.30
1	A	246	ASP	CB-CA-C	6.59	123.58	110.40
1	A	289	GLU	OE1-CD-OE2	6.58	131.20	123.30
1	A	116	ASP	CB-CG-OD2	-6.32	112.61	118.30

*Continued on next page...*



*Continued from previous page...*

Mol	Chain	Res	Type	Atoms	Z	Observed(°)	Ideal(°)
1	A	116	ASP	O-C-N	6.30	132.78	122.70
1	A	176	SER	C-N-CA	6.25	137.32	121.70
1	A	244	ARG	NE-CZ-NH1	6.21	123.41	120.30
1	A	37	GLU	OE1-CD-OE2	-6.19	115.87	123.30
1	A	65	ARG	NE-CZ-NH1	6.12	123.36	120.30
1	A	202	GLU	CG-CD-OE2	-6.10	106.10	118.30
1	A	90	LYS	CA-CB-CG	5.91	126.41	113.40
1	A	116	ASP	CB-CG-OD1	5.91	123.61	118.30
1	A	268	ASP	CB-CG-OD1	5.75	123.47	118.30
1	A	164	ARG	CD-NE-CZ	5.73	131.63	123.60
1	A	196	ASN	N-CA-CB	-5.71	100.32	110.60
1	A	212	LEU	CA-CB-CG	5.69	128.38	115.30
1	A	218	ASP	CB-CG-OD2	-5.65	113.22	118.30
1	A	272	ASP	CB-CG-OD1	-5.65	113.22	118.30
1	A	249	PHE	CB-CG-CD2	-5.60	116.88	120.80
1	A	276	ASP	OD1-CG-OD2	5.56	133.86	123.30
1	A	157	ASP	CA-C-N	-5.52	105.06	117.20
1	A	272	ASP	CB-CG-OD2	5.48	123.23	118.30
1	A	93	LYS	CB-CA-C	-5.45	99.51	110.40
1	A	284	LYS	N-CA-CB	-5.45	100.80	110.60
1	A	82	GLU	CG-CD-OE2	5.41	129.12	118.30
1	A	151	ARG	NE-CZ-NH2	-5.30	117.65	120.30
1	A	151	ARG	CB-CA-C	5.26	120.92	110.40
1	A	128	THR	CA-CB-CG2	5.25	119.75	112.40
1	A	219	THR	CA-CB-CG2	5.24	119.74	112.40
1	A	212	LEU	CB-CG-CD1	5.23	119.89	111.00
1	A	94	LYS	N-CA-CB	5.19	119.95	110.60
1	A	118	THR	CA-CB-CG2	-5.13	105.22	112.40
1	A	189	THR	CA-CB-OG1	-5.11	98.26	109.00
1	A	220	LEU	CB-CA-C	5.08	119.86	110.20
1	A	283	ALA	CB-CA-C	5.05	117.67	110.10
1	A	242	ALA	N-CA-CB	-5.05	103.03	110.10
1	A	288	LYS	N-CA-CB	5.04	119.68	110.60
1	A	284	LYS	CB-CG-CD	-5.04	98.50	111.60

There are no chirality outliers.

All (1) planarity outliers are listed below:

Mol	Chain	Res	Type	Group
1	A	244	ARG	Sidechain

## 5.2 Too-close contacts ⓘ

In the following table, the Non-H and H(model) columns list the number of non-hydrogen atoms and hydrogen atoms in the chain respectively. The H(added) column lists the number of hydrogen atoms added and optimized by MolProbity. The Clashes column lists the number of clashes within the asymmetric unit, whereas Symm-Clashes lists symmetry related clashes.

Mol	Chain	Non-H	H(model)	H(added)	Clashes	Symm-Clashes
1	A	2030	0	2113	180	0
2	A	5	0	0	0	0
3	A	14	0	7	16	0
4	A	11	0	8	3	0
5	A	324	0	0	54	0
All	All	2384	0	2128	189	0

The all-atom clashscore is defined as the number of clashes found per 1000 atoms (including hydrogen atoms). The all-atom clashscore for this structure is 45.

All (189) close contacts within the same asymmetric unit are listed below, sorted by their clash magnitude.

Atom-1	Atom-2	Interatomic distance (Å)	Clash overlap (Å)
1:A:158:LYS:HD2	1:A:158:LYS:H	0.98	1.07
1:A:214:ASN:HD21	1:A:216:SER:HB2	1.17	1.06
1:A:69:ALA:HB1	3:A:301[A]:CEM:O8	1.57	1.05
1:A:259:ILE:HD13	1:A:287:MET:CE	1.86	1.05
1:A:158:LYS:CD	1:A:158:LYS:H	1.67	1.04
1:A:201:LYS:HD3	1:A:201:LYS:C	1.80	1.01
1:A:227:LYS:H	1:A:227:LYS:HE2	1.28	0.99
1:A:288:LYS:HB2	5:A:473:HOH:O	1.60	0.99
1:A:168:GLU:HG2	1:A:171:TYR:CE2	1.98	0.99
1:A:199:LEU:HG	5:A:471:HOH:O	1.62	0.98
1:A:34:ASN:O	1:A:38:LYS:HE2	1.69	0.93
1:A:158:LYS:HD2	1:A:158:LYS:N	1.83	0.92
1:A:31:LYS:HZ1	1:A:284:LYS:HE2	1.36	0.90
3:A:301[A]:CEM:H3	5:A:356:HOH:O	1.70	0.90
1:A:31:LYS:HE2	5:A:352:HOH:O	1.71	0.89
1:A:105:TYR:CE2	4:A:626[B]:TEM:H91	2.10	0.85
1:A:145:ILE:HD13	5:A:404:HOH:O	1.74	0.85
1:A:164:ARG:NH2	1:A:171:TYR:HB2	1.92	0.85
1:A:55:LYS:HE2	1:A:289:GLU:O	1.77	0.84
1:A:237:GLN:H	3:A:301[A]:CEM:H6	1.43	0.83
1:A:259:ILE:HD13	1:A:287:MET:HE3	1.60	0.83
1:A:164:ARG:HH22	1:A:171:TYR:HB2	1.44	0.81

*Continued on next page...*

*Continued from previous page...*

Atom-1	Atom-2	Interatomic distance (Å)	Clash overlap (Å)
1:A:149:LYS:O	1:A:153:LYS:HG2	1.80	0.81
4:A:626[B]:TEM:N4	5:A:367:HOH:O	2.13	0.80
1:A:31:LYS:HE2	1:A:31:LYS:N	1.97	0.80
1:A:259:ILE:HD13	1:A:287:MET:HE1	1.66	0.77
1:A:106:SER:O	1:A:110:GLU:HB3	1.87	0.75
1:A:251:TYR:CE1	1:A:258:PRO:HB3	2.21	0.75
1:A:87:PRO:HB2	1:A:89:ASN:OD1	1.89	0.72
1:A:237:GLN:N	3:A:301[A]:CEM:H6	2.03	0.72
1:A:31:LYS:N	5:A:352:HOH:O	2.23	0.71
1:A:214:ASN:ND2	1:A:216:SER:HB2	2.00	0.71
1:A:224:GLY:O	1:A:284:LYS:HG2	1.90	0.71
1:A:201:LYS:CD	1:A:201:LYS:C	2.58	0.71
1:A:227:LYS:H	1:A:227:LYS:CE	2.03	0.70
1:A:237:GLN:H	3:A:301[A]:CEM:C6	2.05	0.70
1:A:59:LYS:HE2	5:A:596:HOH:O	1.92	0.69
1:A:31:LYS:NZ	1:A:284:LYS:HE2	2.08	0.69
1:A:209:ASP:O	1:A:213:ASN:ND2	2.26	0.69
1:A:284:LYS:HD2	1:A:284:LYS:C	2.13	0.68
1:A:257:GLU:HB2	5:A:461:HOH:O	1.93	0.68
1:A:172:TYR:N	5:A:330:HOH:O	2.27	0.68
1:A:255:GLN:NE2	5:A:545:HOH:O	2.26	0.68
1:A:34:ASN:O	1:A:38:LYS:CE	2.41	0.68
1:A:69:ALA:CB	3:A:301[A]:CEM:O8	2.38	0.67
1:A:31:LYS:HE3	1:A:285:SER:HB2	1.75	0.67
3:A:301[A]:CEM:O13	5:A:433:HOH:O	2.12	0.67
1:A:201:LYS:HD3	1:A:202:GLU:N	2.08	0.67
1:A:201:LYS:NZ	1:A:205:LYS:HD3	2.10	0.67
1:A:230:LYS:HD2	5:A:575:HOH:O	1.95	0.66
1:A:31:LYS:CE	1:A:285:SER:HB2	2.26	0.66
3:A:301[A]:CEM:C5	5:A:356:HOH:O	2.44	0.65
1:A:38:LYS:HG2	5:A:491:HOH:O	1.96	0.65
1:A:94:LYS:HD3	5:A:375:HOH:O	1.97	0.64
1:A:64:LYS:HD3	5:A:347:HOH:O	1.97	0.64
1:A:111:LYS:HE3	1:A:111:LYS:HA	1.80	0.64
1:A:177:LYS:NZ	5:A:353:HOH:O	2.26	0.63
1:A:158:LYS:HD3	1:A:159:VAL:HG23	1.80	0.63
1:A:31:LYS:N	1:A:285:SER:HB2	2.14	0.62
1:A:145:ILE:CD1	5:A:404:HOH:O	2.41	0.62
1:A:48:ALA:HA	1:A:260:VAL:O	2.00	0.62
1:A:171:TYR:C	5:A:330:HOH:O	2.37	0.62
1:A:288:LYS:HG3	5:A:580:HOH:O	2.00	0.62

*Continued on next page...*

*Continued from previous page...*

Atom-1	Atom-2	Interatomic distance (Å)	Clash overlap (Å)
1:A:68:TYR:CD1	1:A:72:SER:HB2	2.35	0.61
1:A:153:LYS:HD2	5:A:587:HOH:O	2.00	0.61
1:A:62:SER:HB2	5:A:319:HOH:O	1.99	0.61
1:A:201:LYS:HZ3	1:A:205:LYS:HD3	1.65	0.61
1:A:212:LEU:HD13	1:A:232:ALA:HB2	1.82	0.61
1:A:234:LYS:NZ	3:A:301[A]:CEM:O14	2.33	0.60
1:A:103:VAL:O	5:A:422:HOH:O	2.16	0.60
1:A:149:LYS:O	1:A:153:LYS:CG	2.49	0.60
1:A:149:LYS:HZ2	1:A:162:PRO:HD2	1.67	0.60
1:A:43:HIS:CE1	5:A:398:HOH:O	2.55	0.59
1:A:34:ASN:HD22	1:A:38:LYS:NZ	2.01	0.59
1:A:201:LYS:CD	1:A:202:GLU:N	2.65	0.59
1:A:164:ARG:HD3	1:A:179:ASP:OD2	2.01	0.59
1:A:238:ALA:HB3	1:A:243:SER:HB2	1.84	0.59
1:A:113:VAL:HB	5:A:453:HOH:O	2.01	0.59
1:A:149:LYS:NZ	1:A:162:PRO:HD2	2.18	0.58
1:A:230:LYS:HE2	5:A:563:HOH:O	2.01	0.58
1:A:171:TYR:CD1	1:A:239:ILE:HD12	2.38	0.58
1:A:143:GLY:O	1:A:147:LYS:HG2	2.03	0.58
1:A:191:ASN:ND2	5:A:499:HOH:O	2.22	0.56
1:A:98:ASN:O	1:A:101:ASP:HB2	2.06	0.55
1:A:89:ASN:ND2	1:A:90:LYS:HD3	2.21	0.55
1:A:161:ASN:HB2	5:A:555:HOH:O	2.06	0.55
1:A:239:ILE:HD11	4:A:626[B]:TEM:O11	2.06	0.54
1:A:171:TYR:CE1	1:A:239:ILE:HD12	2.43	0.54
1:A:112:TYR:HA	1:A:115:LYS:HD2	1.89	0.54
1:A:233:ASP:HB2	1:A:247:VAL:O	2.07	0.54
1:A:236:GLY:HA2	3:A:301[A]:CEM:C6	2.38	0.53
1:A:227:LYS:N	1:A:227:LYS:HE2	2.10	0.53
1:A:275:ASN:O	1:A:278:LEU:HB3	2.09	0.53
1:A:207:LEU:O	1:A:211:MET:HG3	2.09	0.53
1:A:32:GLU:HG3	5:A:470:HOH:O	2.08	0.53
1:A:32:GLU:HG3	5:A:487:HOH:O	2.09	0.53
1:A:91:LEU:HB3	1:A:120:LYS:HB2	1.91	0.53
1:A:228:ASP:HB3	1:A:253:LYS:HD2	1.91	0.53
1:A:158:LYS:CD	1:A:158:LYS:N	2.48	0.52
1:A:38:LYS:CG	5:A:491:HOH:O	2.54	0.52
1:A:68:TYR:HB2	1:A:71:THR:OG1	2.10	0.52
1:A:196:ASN:HB2	5:A:561:HOH:O	2.08	0.52
1:A:168:GLU:HB2	5:A:528:HOH:O	2.10	0.52
1:A:252:PRO:HG2	1:A:255:GLN:OE1	2.10	0.51

*Continued on next page...*

*Continued from previous page...*

Atom-1	Atom-2	Interatomic distance (Å)	Clash overlap (Å)
1:A:228:ASP:CB	1:A:253:LYS:HD2	2.41	0.51
1:A:201:LYS:HD3	1:A:201:LYS:O	2.07	0.51
1:A:225:VAL:HG12	1:A:287:MET:HG2	1.93	0.51
1:A:34:ASN:ND2	1:A:38:LYS:NZ	2.59	0.50
3:A:301[A]:CEM:H5	5:A:356:HOH:O	2.07	0.50
1:A:89:ASN:ND2	1:A:90:LYS:CD	2.75	0.50
1:A:204:LYS:HE2	5:A:373:HOH:O	2.11	0.50
1:A:228:ASP:O	5:A:477:HOH:O	2.19	0.49
1:A:143:GLY:HA3	1:A:147:LYS:HG3	1.94	0.49
1:A:126:SER:O	1:A:130:SER:HA	2.12	0.49
3:A:301[A]:CEM:O13	3:A:301[A]:CEM:O1	2.24	0.49
1:A:31:LYS:N	1:A:285:SER:CB	2.76	0.49
1:A:252:PRO:HB2	1:A:255:GLN:HB3	1.95	0.49
1:A:218:ASP:O	1:A:223:ASP:HB2	2.13	0.48
1:A:87:PRO:HG2	1:A:90:LYS:HD3	1.95	0.48
1:A:43:HIS:HB3	1:A:64:LYS:NZ	2.27	0.48
1:A:261:LEU:HD11	1:A:263:ILE:HG13	1.94	0.48
1:A:165:TYR:C	1:A:169:LEU:HD23	2.33	0.48
1:A:115:LYS:HE3	5:A:362:HOH:O	2.14	0.48
1:A:233:ASP:HA	1:A:247:VAL:O	2.13	0.48
1:A:237:GLN:N	3:A:301[A]:CEM:C6	2.71	0.48
1:A:230:LYS:CE	5:A:563:HOH:O	2.58	0.48
1:A:64:LYS:HD2	1:A:66:PHE:CE1	2.48	0.47
1:A:227:LYS:HA	5:A:594:HOH:O	2.13	0.47
1:A:44:ILE:HD11	1:A:278:LEU:HD11	1.96	0.47
1:A:201:LYS:NZ	1:A:205:LYS:CD	2.76	0.47
1:A:270:LYS:HD2	5:A:548:HOH:O	2.14	0.47
1:A:229:TYR:HE2	1:A:287:MET:HE2	1.80	0.47
1:A:121:ALA:O	5:A:344:HOH:O	2.21	0.47
1:A:31:LYS:N	1:A:31:LYS:CE	2.76	0.47
1:A:149:LYS:NZ	1:A:162:PRO:O	2.45	0.47
1:A:215:LYS:HA	1:A:215:LYS:HE3	1.97	0.47
1:A:242:ALA:HB3	1:A:267:LYS:HG3	1.97	0.47
1:A:89:ASN:N	1:A:89:ASN:OD1	2.31	0.47
1:A:157:ASP:HA	1:A:158:LYS:HD2	1.96	0.46
1:A:124:GLU:HG2	1:A:210:LEU:HD21	1.97	0.46
1:A:168:GLU:CG	5:A:528:HOH:O	2.63	0.46
1:A:36:LEU:HD12	1:A:36:LEU:HA	1.68	0.46
1:A:43:HIS:HB3	1:A:64:LYS:HZ1	1.81	0.46
1:A:242:ALA:HB2	1:A:272:ASP:O	2.16	0.46
3:A:301[A]:CEM:H5	5:A:553:HOH:O	2.15	0.46

*Continued on next page...*

*Continued from previous page...*

Atom-1	Atom-2	Interatomic distance (Å)	Clash overlap (Å)
1:A:120:LYS:NZ	1:A:124:GLU:OE2	2.45	0.45
1:A:110:GLU:HG3	1:A:111:LYS:NZ	2.32	0.45
1:A:201:LYS:HZ3	1:A:205:LYS:CD	2.27	0.45
1:A:153:LYS:HE3	5:A:587:HOH:O	2.17	0.45
1:A:146:LYS:HB2	5:A:480:HOH:O	2.17	0.45
1:A:83:GLN:OE1	1:A:142:ILE:HA	2.16	0.44
1:A:31:LYS:HE2	1:A:285:SER:HB2	1.97	0.44
1:A:215:LYS:HG3	1:A:218:ASP:OD2	2.16	0.44
1:A:168:GLU:HG3	5:A:528:HOH:O	2.17	0.44
1:A:149:LYS:HE2	5:A:464:HOH:O	2.16	0.44
1:A:192:LYS:NZ	5:A:605:HOH:O	2.50	0.44
1:A:95:VAL:O	1:A:116:ASP:HA	2.18	0.44
1:A:151:ARG:HD2	1:A:154:GLU:OE1	2.18	0.44
1:A:199:LEU:N	5:A:471:HOH:O	2.51	0.43
1:A:202:GLU:CD	1:A:202:GLU:H	2.22	0.43
1:A:140:LYS:HG3	5:A:552:HOH:O	2.18	0.43
1:A:153:LYS:H	1:A:153:LYS:HG2	1.45	0.43
1:A:196:ASN:CB	5:A:481:HOH:O	2.66	0.43
1:A:284:LYS:HG3	1:A:284:LYS:HZ3	1.65	0.43
1:A:31:LYS:N	1:A:285:SER:HG	2.17	0.43
1:A:233:ASP:OD2	1:A:246:ASP:OD1	2.36	0.43
1:A:48:ALA:O	1:A:56:GLU:HA	2.18	0.43
1:A:34:ASN:HD22	1:A:38:LYS:HZ3	1.66	0.43
1:A:220:LEU:HD22	1:A:279:ILE:HD12	2.01	0.43
1:A:98:ASN:HD22	1:A:100:ASP:H	1.66	0.42
1:A:78:ALA:HB3	1:A:193:LEU:HD13	2.02	0.42
1:A:280:SER:O	1:A:284:LYS:HB2	2.19	0.42
1:A:261:LEU:HD11	1:A:263:ILE:CG1	2.50	0.42
1:A:208:LEU:O	1:A:212:LEU:HB2	2.20	0.42
1:A:34:ASN:ND2	1:A:38:LYS:HZ3	2.18	0.41
1:A:44:ILE:O	1:A:61:ASN:HB2	2.21	0.41
1:A:81:LEU:HD23	1:A:81:LEU:HA	1.87	0.41
1:A:97:ILE:HA	1:A:101:ASP:OD2	2.20	0.41
1:A:227:LYS:CD	1:A:227:LYS:H	2.33	0.41
1:A:255:GLN:HG2	1:A:257:GLU:O	2.21	0.41
1:A:196:ASN:ND2	5:A:493:HOH:O	2.53	0.41
1:A:225:VAL:HB	1:A:226:PRO:CD	2.51	0.41
1:A:224:GLY:HA3	1:A:280:SER:O	2.21	0.41
1:A:51:THR:OG1	1:A:258:PRO:HD2	2.21	0.40
1:A:196:ASN:HB2	5:A:481:HOH:O	2.22	0.40
1:A:234:LYS:HA	1:A:234:LYS:HD2	1.92	0.40

*Continued on next page...*

*Continued from previous page...*

Atom-1	Atom-2	Interatomic distance (Å)	Clash overlap (Å)
1:A:168:GLU:HG2	1:A:171:TYR:CD2	2.50	0.40

There are no symmetry-related clashes.

## 5.3 Torsion angles [i](#)

### 5.3.1 Protein backbone [i](#)

In the following table, the Percentiles column shows the percent Ramachandran outliers of the chain as a percentile score with respect to all X-ray entries followed by that with respect to entries of similar resolution.

The Analysed column shows the number of residues for which the backbone conformation was analysed, and the total number of residues.

Mol	Chain	Analysed	Favoured	Allowed	Outliers	Percentiles	
1	A	256/257 (100%)	245 (96%)	11 (4%)	0	100	100

There are no Ramachandran outliers to report.

### 5.3.2 Protein sidechains [i](#)

In the following table, the Percentiles column shows the percent sidechain outliers of the chain as a percentile score with respect to all X-ray entries followed by that with respect to entries of similar resolution.

The Analysed column shows the number of residues for which the sidechain conformation was analysed, and the total number of residues.

Mol	Chain	Analysed	Rotameric	Outliers	Percentiles	
1	A	228/227 (100%)	195 (86%)	33 (14%)	4	3

All (33) residues with a non-rotameric sidechain are listed below:

Mol	Chain	Res	Type
1	A	31	LYS
1	A	34	ASN
1	A	36	LEU
1	A	38	LYS
1	A	52	LYS

*Continued on next page...*

*Continued from previous page...*

Mol	Chain	Res	Type
1	A	62	SER
1	A	64	LYS
1	A	72	SER
1	A	83	GLN
1	A	90	LYS
1	A	92	ASN
1	A	94	LYS
1	A	95	VAL
1	A	98	ASN
1	A	111	LYS
1	A	146	LYS
1	A	152	LEU
1	A	153	LYS
1	A	158	LYS
1	A	173	SER
1	A	174	PRO
1	A	177	LYS
1	A	198	LYS
1	A	201	LYS
1	A	215	LYS
1	A	222	LYS
1	A	227	LYS
1	A	228	ASP
1	A	253	LYS
1	A	256	SER
1	A	257	GLU
1	A	284	LYS
1	A	287	MET

Some sidechains can be flipped to improve hydrogen bonding and reduce clashes. All (5) such sidechains are listed below:

Mol	Chain	Res	Type
1	A	34	ASN
1	A	92	ASN
1	A	98	ASN
1	A	196	ASN
1	A	214	ASN

### 5.3.3 RNA ⓘ

There are no RNA molecules in this entry.



## 5.4 Non-standard residues in protein, DNA, RNA chains ⓘ

There are no non-standard protein/DNA/RNA residues in this entry.

## 5.5 Carbohydrates ⓘ

There are no carbohydrates in this entry.

## 5.6 Ligand geometry ⓘ

3 ligands are modelled in this entry.

In the following table, the Counts columns list the number of bonds (or angles) for which Mogul statistics could be retrieved, the number of bonds (or angles) that are observed in the model and the number of bonds (or angles) that are defined in the chemical component dictionary. The Link column lists molecule types, if any, to which the group is linked. The Z score for a bond length (or angle) is the number of standard deviations the observed value is removed from the expected value. A bond length (or angle) with  $|Z| > 2$  is considered an outlier worth inspection. RMSZ is the root-mean-square of all Z scores of the bond lengths (or angles).

Mol	Type	Chain	Res	Link	Bond lengths			Bond angles		
					Counts	RMSZ	# $ Z  > 2$	Counts	RMSZ	# $ Z  > 2$
2	SO4	A	300	-	4,4,4	1.07	0	6,6,6	0.66	0
3	CEM	A	301[A]	1	8,13,13	3.83	3 (37%)	7,15,15	3.64	5 (71%)
4	TEM	A	626[B]	1	8,10,10	2.89	2 (25%)	8,10,10	2.90	5 (62%)

In the following table, the Chirals column lists the number of chiral outliers, the number of chiral centers analysed, the number of these observed in the model and the number defined in the chemical component dictionary. Similar counts are reported in the Torsion and Rings columns. '-' means no outliers of that kind were identified.

Mol	Type	Chain	Res	Link	Chirals	Torsions	Rings
2	SO4	A	300	-	-	0/0/0/0	0/0/0/0
3	CEM	A	301[A]	1	1/1/3/8	0/12/16/16	0/0/0/0
4	TEM	A	626[B]	1	1/1/1/6	0/8/9/9	0/0/0/0

All (5) bond length outliers are listed below:

Mol	Chain	Res	Type	Atoms	Z	Observed(Å)	Ideal(Å)
3	A	301[A]	CEM	O1-C2	-9.01	1.23	1.43
4	A	626[B]	TEM	O1-C2	-6.70	1.23	1.43
3	A	301[A]	CEM	C5-C6	-4.35	1.30	1.37
3	A	301[A]	CEM	O11-C10	3.57	1.42	1.19

*Continued on next page...*

*Continued from previous page...*

Mol	Chain	Res	Type	Atoms	Z	Observed(Å)	Ideal(Å)
4	A	626[B]	TEM	O11-C10	3.64	1.43	1.19

All (10) bond angle outliers are listed below:

Mol	Chain	Res	Type	Atoms	Z	Observed(°)	Ideal(°)
3	A	301[A]	CEM	O11-C10-C9	-3.30	113.18	125.24
4	A	626[B]	TEM	O11-C10-C9	-3.12	113.87	125.24
3	A	301[A]	CEM	O8-C7-C6	-2.65	118.74	125.51
4	A	626[B]	TEM	C3-N4-C5	-2.03	117.01	123.47
3	A	301[A]	CEM	O1-C2-C3	2.89	115.24	109.10
4	A	626[B]	TEM	O1-C2-C3	2.95	119.46	109.18
4	A	626[B]	TEM	C6-C5-N4	3.53	131.60	124.75
4	A	626[B]	TEM	O1-C2-C9	5.36	123.13	109.32
3	A	301[A]	CEM	C9-C2-C3	5.69	121.45	112.93
3	A	301[A]	CEM	O1-C2-C9	5.81	122.83	109.34

All (2) chirality outliers are listed below:

Mol	Chain	Res	Type	Atom
3	A	301[A]	CEM	C2
4	A	626[B]	TEM	C2

There are no torsion outliers.

There are no ring outliers.

2 monomers are involved in 19 short contacts:

Mol	Chain	Res	Type	Clashes	Symm-Clashes
3	A	301[A]	CEM	16	0
4	A	626[B]	TEM	3	0

## 5.7 Other polymers [i](#)

There are no such residues in this entry.

## 5.8 Polymer linkage issues [i](#)

There are no chain breaks in this entry.

## 6 Fit of model and data ⓘ

### 6.1 Protein, DNA and RNA chains ⓘ

EDS was not executed - this section will therefore be empty.

### 6.2 Non-standard residues in protein, DNA, RNA chains ⓘ

EDS was not executed - this section will therefore be empty.

### 6.3 Carbohydrates ⓘ

EDS was not executed - this section will therefore be empty.

### 6.4 Ligands ⓘ

EDS was not executed - this section will therefore be empty.

### 6.5 Other polymers ⓘ

EDS was not executed - this section will therefore be empty.