



Full wwPDB X-ray Structure Validation Report ⓘ

Feb 1, 2016 – 03:10 PM GMT

PDB ID : 4BPV
Title : MOUSE CATHEPSIN S WITH COVALENT LIGAND
Authors : Banner, D.W.; Benz, J.; Gsell, B.; Stihle, M.; Ruf, A.; Haap, W.
Deposited on : 2013-05-28
Resolution : 2.00 Å(reported)

This is a Full wwPDB X-ray Structure Validation Report for a publicly released PDB entry.
We welcome your comments at validation@mail.wwpdb.org
A user guide is available at
<http://wwpdb.org/validation/2016/XrayValidationReportHelp>
with specific help available everywhere you see the ⓘ symbol.

The following versions of software and data (see [references ⓘ](#)) were used in the production of this report:

MolProbity : 4.02b-467
Mogul : 1.7 (RC4), CSD as536be (2015)
Xtriage (Phenix) : 1.9-1692
EDS : rb-20026688
Percentile statistics : 20151230.v01 (using entries in the PDB archive December 30th 2015)
Refmac : 5.8.0135
CCP4 : 6.5.0
Ideal geometry (proteins) : Engh & Huber (2001)
Ideal geometry (DNA, RNA) : Parkinson et al. (1996)
Validation Pipeline (wwPDB-VP) : trunk26865

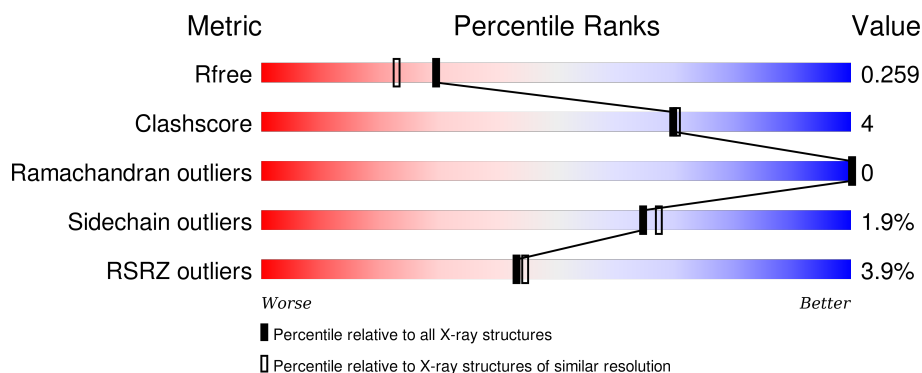
1 Overall quality at a glance

The following experimental techniques were used to determine the structure:

X-RAY DIFFRACTION

The reported resolution of this entry is 2.00 Å.

Percentile scores (ranging between 0-100) for global validation metrics of the entry are shown in the following graphic. The table shows the number of entries on which the scores are based.



Metric	Whole archive (#Entries)	Similar resolution (#Entries, resolution range(Å))
R_{free}	91344	6249 (2.00-2.00)
Clashscore	102246	7340 (2.00-2.00)
Ramachandran outliers	100387	7248 (2.00-2.00)
Sidechain outliers	100360	7247 (2.00-2.00)
RSRZ outliers	91569	6262 (2.00-2.00)

The table below summarises the geometric issues observed across the polymeric chains and their fit to the electron density. The red, orange, yellow and green segments on the lower bar indicate the fraction of residues that contain outliers for ≥ 3 , 2, 1 and 0 types of geometric quality criteria. A grey segment represents the fraction of residues that are not modelled. The numeric value for each fraction is indicated below the corresponding segment, with a dot representing fractions $\leq 5\%$. The upper red bar (where present) indicates the fraction of residues that have poor fit to the electron density. The numeric value is given above the bar.

Mol	Chain	Length	Quality of chain
1	A	225	<div> <div>91%</div> <div>6% .</div> </div>
1	B	225	<div> <div>91%</div> <div>7% .</div> </div>
1	C	225	<div> <div>%</div> <div>88%</div> <div>8% .</div> </div>
1	D	225	<div> <div>%</div> <div>90%</div> <div>7% .</div> </div>
1	E	225	<div> <div>%</div> <div>89%</div> <div>8% .</div> </div>

Continued on next page...

Continued from previous page...

Mol	Chain	Length	Quality of chain
1	K	225	<div><div></div><div>17%</div><div>32%</div><div>7%</div><div>60%</div></div>

2 Entry composition

There are 3 unique types of molecules in this entry. The entry contains 10276 atoms, of which 0 are hydrogens and 0 are deuteriums.

In the tables below, the ZeroOcc column contains the number of atoms modelled with zero occupancy, the AltConf column contains the number of residues with at least one atom in alternate conformation and the Trace column contains the number of residues modelled with at most 2 atoms.

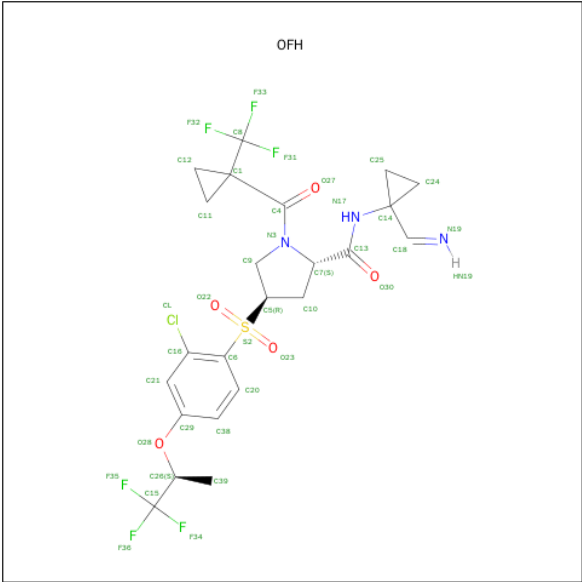
- Molecule 1 is a protein called CATHEPSIN S.

Mol	Chain	Residues	Atoms					ZeroOcc	AltConf	Trace
1	A	219	Total	C	N	O	S	0	2	0
			1694	1064	285	332	13			
1	B	219	Total	C	N	O	S	0	3	0
			1706	1069	289	335	13			
1	C	219	Total	C	N	O	S	0	3	0
			1698	1064	285	335	14			
1	D	219	Total	C	N	O	S	0	0	0
			1676	1052	281	330	13			
1	E	219	Total	C	N	O	S	0	1	0
			1684	1056	283	332	13			
1	K	89	Total	C	N	O	S	0	0	0
			685	433	116	133	3			

There are 6 discrepancies between the modelled and reference sequences:

Chain	Residue	Modelled	Actual	Comment	Reference
A	218	MET	THR	VARIANT	UNP O70370
B	218	MET	THR	VARIANT	UNP O70370
C	218	MET	THR	VARIANT	UNP O70370
D	218	MET	THR	VARIANT	UNP O70370
E	218	MET	THR	VARIANT	UNP O70370
K	218	MET	THR	VARIANT	UNP O70370

- Molecule 2 is (4R)-4-[(2-CHLORO-4-[(2S)-1,1,1-TRIFLUOROPROPAN-2-YL]OXY}PH ENYL)SULFONYL]-N-{1-[(E)-IMINOMETHYL]CYCLOPROPYL}-1-{[1-(TRIFLUORO METHYL)CYCLOPROPYL]CARBONYL}-L-PROLINAMIDE (three-letter code: OFH) (formula: C₂₃H₂₄ClF₆N₃O₅S).



Mol	Chain	Residues	Atoms							ZeroOcc	AltConf
2	A	1	Total	C	Cl	F	N	O	S	0	0
			39	23	1	6	3	5	1		
2	B	1	Total	C	Cl	F	N	O	S	0	0
			39	23	1	6	3	5	1		
2	C	1	Total	C	Cl	F	N	O	S	0	0
			39	23	1	6	3	5	1		
2	D	1	Total	C	Cl	F	N	O	S	0	0
			39	23	1	6	3	5	1		
2	E	1	Total	C	Cl	F	N	O	S	0	0
			39	23	1	6	3	5	1		

- Molecule 3 is water.

Mol	Chain	Residues	Atoms		ZeroOcc	AltConf
3	A	256	Total	O	0	0
			256	256		
3	B	174	Total	O	0	0
			174	174		
3	C	169	Total	O	0	0
			169	169		
3	D	158	Total	O	0	0
			158	158		
3	E	115	Total	O	0	0
			115	115		
3	K	66	Total	O	0	0
			66	66		

3 Residue-property plots [i](#)

These plots are drawn for all protein, RNA and DNA chains in the entry. The first graphic for a chain summarises the proportions of errors displayed in the second graphic. The second graphic shows the sequence view annotated by issues in geometry and electron density. Residues are color-coded according to the number of geometric quality criteria for which they contain at least one outlier: green = 0, yellow = 1, orange = 2 and red = 3 or more. A red dot above a residue indicates a poor fit to the electron density ($RSRZ > 2$). Stretches of 2 or more consecutive residues without any outlier are shown as a green connector. Residues present in the sample, but not in the model, are shown in grey.

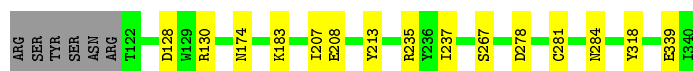
• Molecule 1: CATHEPSIN S

Chain A: 




• Molecule 1: CATHEPSIN S

Chain B: 



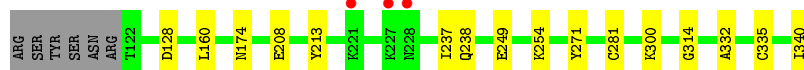
• Molecule 1: CATHEPSIN S

Chain C: 




• Molecule 1: CATHEPSIN S

Chain D: 



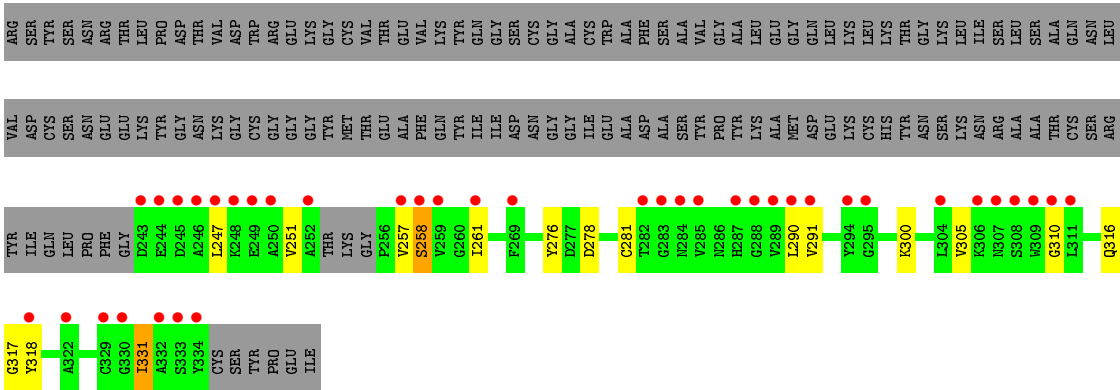
• Molecule 1: CATHEPSIN S

Chain E: 



• Molecule 1: CATHEPSIN S

Chain K: 



4 Data and refinement statistics

Property	Value	Source
Space group	P 1 21 1	Depositor
Cell constants a, b, c, α , β , γ	72.86Å 128.92Å 97.13Å 90.00° 97.44° 90.00°	Depositor
Resolution (Å)	45.11 – 2.00 45.11 – 2.00	Depositor EDS
% Data completeness (in resolution range)	97.8 (45.11-2.00) 97.9 (45.11-2.00)	Depositor EDS
R_{merge}	0.08	Depositor
R_{sym}	(Not available)	Depositor
$\langle I/\sigma(I) \rangle$ ¹	2.26 (at 2.00Å)	Xtriage
Refinement program	REFMAC 5.7.0029	Depositor
R, R_{free}	0.212 , 0.255 0.217 , 0.259	Depositor DCC
R_{free} test set	6039 reflections (5.42%)	DCC
Wilson B-factor (Å ²)	27.6	Xtriage
Anisotropy	0.097	Xtriage
Bulk solvent k_{sol} (e/Å ³), B_{sol} (Å ²)	0.32 , 51.4	EDS
Estimated twinning fraction	No twinning to report.	Xtriage
L-test for twinning ²	$\langle L \rangle = 0.44$, $\langle L^2 \rangle = 0.26$	Xtriage
Outliers	0 of 117243 reflections	Xtriage
F_o, F_c correlation	0.93	EDS
Total number of atoms	10276	wwPDB-VP
Average B, all atoms (Å ²)	34.0	wwPDB-VP

Xtriage's analysis on translational NCS is as follows: *The largest off-origin peak in the Patterson function is 15.94% of the height of the origin peak. No significant pseudotranslation is detected.*

¹Intensities estimated from amplitudes.

²Theoretical values of $\langle |L| \rangle$, $\langle L^2 \rangle$ for acentric reflections are 0.5, 0.375 respectively for untwinned datasets, and 0.333, 0.2 for perfectly twinned datasets.

5 Model quality

5.1 Standard geometry

Bond lengths and bond angles in the following residue types are not validated in this section: OFH

The Z score for a bond length (or angle) is the number of standard deviations the observed value is removed from the expected value. A bond length (or angle) with $|Z| > 5$ is considered an outlier worth inspection. RMSZ is the root-mean-square of all Z scores of the bond lengths (or angles).

Mol	Chain	Bond lengths		Bond angles	
		RMSZ	$\# Z > 5$	RMSZ	$\# Z > 5$
1	A	0.73	0/1733	0.80	1/2339 (0.0%)
1	B	0.65	0/1746	0.69	1/2358 (0.0%)
1	C	0.64	0/1737	0.70	1/2346 (0.0%)
1	D	0.65	0/1715	0.68	0/2317
1	E	0.53	0/1723	0.69	2/2328 (0.1%)
1	K	0.44	0/702	0.57	0/949
All	All	0.63	0/9356	0.70	5/12637 (0.0%)

There are no bond length outliers.

All (5) bond angle outliers are listed below:

Mol	Chain	Res	Type	Atoms	Z	Observed(°)	Ideal(°)
1	E	229	ARG	NE-CZ-NH2	-8.51	116.04	120.30
1	E	229	ARG	NE-CZ-NH1	7.93	124.26	120.30
1	A	229	ARG	NE-CZ-NH2	-5.99	117.31	120.30
1	C	278	ASP	CB-CG-OD1	5.74	123.47	118.30
1	B	128	ASP	CB-CG-OD1	5.24	123.02	118.30

There are no chirality outliers.

There are no planarity outliers.

5.2 Too-close contacts

In the following table, the Non-H and H(model) columns list the number of non-hydrogen atoms and hydrogen atoms in the chain respectively. The H(added) column lists the number of hydrogen atoms added and optimized by MolProbity. The Clashes column lists the number of clashes within the asymmetric unit, whereas Symm-Clashes lists symmetry related clashes.

Mol	Chain	Non-H	H(model)	H(added)	Clashes	Symm-Clashes
1	A	1694	0	1601	9	0
1	B	1706	0	1600	10	0
1	C	1698	0	1594	18	0
1	D	1676	0	1577	21	0
1	E	1684	0	1582	11	0
1	K	685	0	632	20	0
2	A	39	0	22	1	0
2	B	39	0	22	1	0
2	C	39	0	22	1	0
2	D	39	0	22	0	0
2	E	39	0	22	1	0
3	A	256	0	0	6	0
3	B	174	0	0	3	0
3	C	169	0	0	3	0
3	D	158	0	0	2	0
3	E	115	0	0	2	0
3	K	66	0	0	0	0
All	All	10276	0	8696	81	0

The all-atom clashscore is defined as the number of clashes found per 1000 atoms (including hydrogen atoms). The all-atom clashscore for this structure is 4.

All (81) close contacts within the same asymmetric unit are listed below, sorted by their clash magnitude.

Atom-1	Atom-2	Interatomic distance (Å)	Clash overlap (Å)
1:D:300:LYS:NZ	1:K:300:LYS:HZ1	1.17	1.38
1:D:300:LYS:NZ	1:K:300:LYS:NZ	1.71	1.34
1:C:235:ARG:NH2	1:C:339:GLU:OE2	1.62	1.30
3:C:2063:HOH:O	1:D:249:GLU:OE1	1.66	1.10
1:A:272[A]:LYS:HE3	3:A:2196:HOH:O	1.53	1.05
1:D:300:LYS:HZ1	1:K:300:LYS:NZ	1.40	1.02
1:C:235:ARG:CZ	1:C:339:GLU:OE2	2.10	0.99
1:D:300:LYS:HZ2	1:K:300:LYS:NZ	1.44	0.92
1:D:300:LYS:HZ2	1:K:300:LYS:HZ3	1.14	0.89
1:B:235[A]:ARG:NH1	3:B:2094:HOH:O	2.07	0.88
1:C:235:ARG:NH2	1:C:339:GLU:CD	2.28	0.87
1:E:235:ARG:NH2	1:E:339:GLU:OE2	2.13	0.82
1:D:300:LYS:NZ	1:K:300:LYS:HZ3	1.72	0.79
1:D:128:ASP:OD2	3:D:2008:HOH:O	2.00	0.78
1:A:340:ILE:O	3:A:2256:HOH:O	2.03	0.74
1:B:235[A]:ARG:NE	1:B:339[A]:GLU:OE1	2.20	0.74
2:C:1341:OFH:CL	3:C:2064:HOH:O	2.46	0.69

Continued on next page...

Continued from previous page...

Atom-1	Atom-2	Interatomic distance (Å)	Clash overlap (Å)
1:A:166[A]:LYS:HD3	1:A:168:ILE:HD11	1.77	0.67
1:D:254:LYS:HE2	3:D:2101:HOH:O	1.96	0.65
1:C:235:ARG:CZ	1:C:339:GLU:CD	2.64	0.64
1:E:235:ARG:NE	1:E:339:GLU:OE1	2.32	0.63
1:E:245:ASP:OD1	3:E:2078:HOH:O	2.16	0.63
1:K:257:VAL:O	1:K:290:LEU:HD12	1.98	0.62
1:D:300:LYS:CE	1:K:300:LYS:NZ	2.63	0.61
3:A:2206:HOH:O	1:E:300:LYS:HE3	2.01	0.61
1:A:137:GLU:OE1	3:A:2027:HOH:O	2.16	0.59
1:D:300:LYS:CE	1:K:300:LYS:HZ1	2.14	0.58
1:E:278:ASP:H	1:E:328:HIS:CE1	2.22	0.58
1:C:235:ARG:NH2	1:C:339:GLU:OE1	2.38	0.56
1:C:267:SER:OG	1:C:278:ASP:OD2	2.25	0.54
1:C:339:GLU:HG3	3:C:2169:HOH:O	2.07	0.54
1:A:163:LYS:NZ	3:A:2056:HOH:O	2.39	0.54
1:D:300:LYS:HD3	1:K:300:LYS:HD2	1.89	0.53
1:D:300:LYS:HZ1	1:K:300:LYS:HZ1	0.56	0.52
1:K:257:VAL:HG12	1:K:258:SER:N	2.24	0.52
1:B:174:ASN:HD22	1:B:208:GLU:H	1.58	0.52
1:K:261:ILE:HG21	1:K:331:ILE:HD12	1.92	0.51
1:C:216:LYS:O	1:C:218[B]:MET:HG3	2.11	0.51
1:B:183:LYS:HB2	3:B:2055:HOH:O	2.10	0.51
1:A:332:ALA:HA	1:A:335:CYS:SG	2.51	0.51
1:D:174:ASN:HD22	1:D:208:GLU:H	1.59	0.51
1:C:235:ARG:HH21	1:C:339:GLU:CD	2.14	0.49
1:B:284:ASN:ND2	3:B:2141:HOH:O	2.32	0.49
1:B:267:SER:OG	1:B:278:ASP:OD2	2.28	0.49
1:K:257:VAL:HG12	1:K:258:SER:H	1.77	0.49
1:C:235:ARG:NE	1:C:339:GLU:OE1	2.46	0.49
1:A:223:HIS:HE1	3:A:2078:HOH:O	1.96	0.48
1:E:235:ARG:CZ	1:E:339:GLU:OE2	2.62	0.47
1:D:237:ILE:N	1:D:237:ILE:HD12	2.29	0.47
1:K:310:GLY:O	1:K:317:GLY:HA2	2.15	0.46
1:C:156:LEU:HD23	1:C:170:LEU:HD13	1.98	0.46
1:K:316:GLN:O	1:K:318:TYR:HD1	1.98	0.46
2:E:1341:OFH:C13	2:E:1341:OFH:O27	2.64	0.46
1:C:147:CYS:HB3	1:C:287:HIS:CE1	2.51	0.45
1:K:276:TYR:CZ	1:K:278:ASP:HB2	2.51	0.45
1:C:237:ILE:O	1:C:336:SER:HA	2.16	0.45
2:B:1341:OFH:O27	2:B:1341:OFH:C13	2.64	0.45
1:K:247:LEU:O	1:K:251:VAL:HG23	2.17	0.44

Continued on next page...

Continued from previous page...

Atom-1	Atom-2	Interatomic distance (Å)	Clash overlap (Å)
1:E:276:TYR:CZ	1:E:278:ASP:HB2	2.52	0.44
1:C:157:GLU:HG2	1:C:168:ILE:O	2.18	0.44
1:D:160:LEU:HA	1:D:340:ILE:CD1	2.48	0.43
1:B:237:ILE:N	1:B:237:ILE:HD12	2.33	0.43
1:E:174:ASN:HD22	1:E:208:GLU:H	1.65	0.43
1:D:271:TYR:O	1:D:314:GLY:HA2	2.19	0.43
1:A:237:ILE:N	1:A:237:ILE:HD12	2.33	0.43
1:D:332:ALA:HA	1:D:335:CYS:SG	2.59	0.43
1:B:174:ASN:ND2	1:B:208:GLU:H	2.16	0.42
1:E:129:TRP:CE2	1:E:255:GLY:HA2	2.54	0.42
1:D:160:LEU:HA	1:D:340:ILE:HD11	2.02	0.42
1:E:223:HIS:HE1	3:E:2033:HOH:O	2.02	0.42
1:C:284[B]:ASN:OD1	1:D:238:GLN:OE1	2.38	0.42
1:C:147:CYS:CB	1:C:287:HIS:CE1	3.02	0.42
2:A:1341:OFH:C13	2:A:1341:OFH:O27	2.66	0.42
1:B:174:ASN:ND2	1:B:207:ILE:HG13	2.35	0.41
1:K:291:VAL:HG22	1:K:305:VAL:HG22	2.01	0.41
1:A:166[A]:LYS:HG2	1:A:168:ILE:CG1	2.50	0.41
1:B:130:ARG:HD3	1:B:318:TYR:CZ	2.55	0.41
1:D:300:LYS:CG	1:K:300:LYS:HZ3	2.34	0.41
1:C:235:ARG:CZ	1:C:339:GLU:OE1	2.68	0.41
1:C:174:ASN:HD22	1:C:208:GLU:H	1.69	0.40
1:E:130:ARG:HD3	1:E:318:TYR:CZ	2.57	0.40

There are no symmetry-related clashes.

5.3 Torsion angles [i](#)

5.3.1 Protein backbone [i](#)

In the following table, the Percentiles column shows the percent Ramachandran outliers of the chain as a percentile score with respect to all X-ray entries followed by that with respect to entries of similar resolution.

The Analysed column shows the number of residues for which the backbone conformation was analysed, and the total number of residues.

Mol	Chain	Analysed	Favoured	Allowed	Outliers	Percentiles	
1	A	219/225 (97%)	212 (97%)	7 (3%)	0	100	100
1	B	220/225 (98%)	211 (96%)	9 (4%)	0	100	100

Continued on next page...

Continued from previous page...

Mol	Chain	Analysed	Favoured	Allowed	Outliers	Percentiles	
1	C	220/225 (98%)	210 (96%)	10 (4%)	0	100	100
1	D	217/225 (96%)	208 (96%)	9 (4%)	0	100	100
1	E	218/225 (97%)	211 (97%)	7 (3%)	0	100	100
1	K	85/225 (38%)	77 (91%)	8 (9%)	0	100	100
All	All	1179/1350 (87%)	1129 (96%)	50 (4%)	0	100	100

There are no Ramachandran outliers to report.

5.3.2 Protein sidechains ⓘ

In the following table, the Percentiles column shows the percent sidechain outliers of the chain as a percentile score with respect to all X-ray entries followed by that with respect to entries of similar resolution.

The Analysed column shows the number of residues for which the sidechain conformation was analysed, and the total number of residues.

Mol	Chain	Analysed	Rotameric	Outliers	Percentiles	
1	A	178/182 (98%)	173 (97%)	5 (3%)	51	50
1	B	179/182 (98%)	177 (99%)	2 (1%)	80	83
1	C	179/182 (98%)	176 (98%)	3 (2%)	68	71
1	D	176/182 (97%)	174 (99%)	2 (1%)	80	83
1	E	177/182 (97%)	174 (98%)	3 (2%)	68	71
1	K	72/182 (40%)	69 (96%)	3 (4%)	36	31
All	All	961/1092 (88%)	943 (98%)	18 (2%)	65	67

All (18) residues with a non-rotameric sidechain are listed below:

Mol	Chain	Res	Type
1	A	122	THR
1	A	213	TYR
1	A	281	CYS
1	A	300	LYS
1	A	340	ILE
1	B	213	TYR
1	B	281	CYS
1	C	182	GLU
1	C	213	TYR

Continued on next page...

Continued from previous page...

Mol	Chain	Res	Type
1	C	281	CYS
1	D	213	TYR
1	D	281	CYS
1	E	122	THR
1	E	182	GLU
1	E	213	TYR
1	K	258	SER
1	K	281	CYS
1	K	331	ILE

Some sidechains can be flipped to improve hydrogen bonding and reduce clashes. All (11) such sidechains are listed below:

Mol	Chain	Res	Type
1	A	223	HIS
1	A	265	HIS
1	B	174	ASN
1	B	223	HIS
1	C	174	ASN
1	C	312	ASN
1	D	174	ASN
1	D	265	HIS
1	E	174	ASN
1	E	223	HIS
1	E	328	HIS

5.3.3 RNA ⓘ

There are no RNA molecules in this entry.

5.4 Non-standard residues in protein, DNA, RNA chains ⓘ

There are no non-standard protein/DNA/RNA residues in this entry.

5.5 Carbohydrates ⓘ

There are no carbohydrates in this entry.

5.6 Ligand geometry

5 ligands are modelled in this entry.

In the following table, the Counts columns list the number of bonds (or angles) for which Mogul statistics could be retrieved, the number of bonds (or angles) that are observed in the model and the number of bonds (or angles) that are defined in the chemical component dictionary. The Link column lists molecule types, if any, to which the group is linked. The Z score for a bond length (or angle) is the number of standard deviations the observed value is removed from the expected value. A bond length (or angle) with $|Z| > 2$ is considered an outlier worth inspection. RMSZ is the root-mean-square of all Z scores of the bond lengths (or angles).

Mol	Type	Chain	Res	Link	Bond lengths			Bond angles		
					Counts	RMSZ	# $ Z > 2$	Counts	RMSZ	# $ Z > 2$
2	OFH	A	1341	1	38,42,42	2.17	7 (18%)	52,69,69	2.12	16 (30%)
2	OFH	B	1341	1	38,42,42	2.06	7 (18%)	52,69,69	1.61	9 (17%)
2	OFH	C	1341	1	38,42,42	2.05	5 (13%)	52,69,69	2.10	15 (28%)
2	OFH	D	1341	1	38,42,42	2.12	7 (18%)	52,69,69	2.03	11 (21%)
2	OFH	E	1341	1	38,42,42	1.98	5 (13%)	52,69,69	2.16	12 (23%)

In the following table, the Chirals column lists the number of chiral outliers, the number of chiral centers analysed, the number of these observed in the model and the number defined in the chemical component dictionary. Similar counts are reported in the Torsion and Rings columns. '-' means no outliers of that kind were identified.

Mol	Type	Chain	Res	Link	Chirals	Torsions	Rings
2	OFH	A	1341	1	-	0/47/73/73	0/2/4/4
2	OFH	B	1341	1	-	0/47/73/73	0/2/4/4
2	OFH	C	1341	1	-	0/47/73/73	0/2/4/4
2	OFH	D	1341	1	-	0/47/73/73	0/2/4/4
2	OFH	E	1341	1	-	0/47/73/73	0/2/4/4

All (31) bond length outliers are listed below:

Mol	Chain	Res	Type	Atoms	Z	Observed(Å)	Ideal(Å)
2	E	1341	OFH	C6-S2	-8.06	1.62	1.78
2	A	1341	OFH	C6-S2	-7.81	1.62	1.78
2	D	1341	OFH	C5-S2	-7.51	1.69	1.79
2	C	1341	OFH	C6-S2	-7.35	1.63	1.78
2	A	1341	OFH	C5-S2	-7.34	1.69	1.79
2	B	1341	OFH	C6-S2	-7.34	1.63	1.78
2	D	1341	OFH	C6-S2	-7.28	1.63	1.78
2	C	1341	OFH	C5-S2	-6.70	1.70	1.79
2	B	1341	OFH	C5-S2	-6.56	1.70	1.79

Continued on next page...

Continued from previous page...

Mol	Chain	Res	Type	Atoms	Z	Observed(Å)	Ideal(Å)
2	E	1341	OFH	C5-S2	-5.38	1.72	1.79
2	C	1341	OFH	O23-S2	-3.75	1.40	1.44
2	B	1341	OFH	O22-S2	-3.55	1.40	1.44
2	D	1341	OFH	O28-C26	-3.03	1.41	1.46
2	A	1341	OFH	O22-S2	-2.89	1.41	1.44
2	C	1341	OFH	C7-C13	-2.87	1.46	1.52
2	E	1341	OFH	O23-S2	-2.61	1.41	1.44
2	B	1341	OFH	O23-S2	-2.36	1.42	1.44
2	E	1341	OFH	O28-C26	-2.26	1.42	1.46
2	B	1341	OFH	C12-C1	2.04	1.54	1.51
2	B	1341	OFH	C24-C14	2.17	1.53	1.51
2	D	1341	OFH	C20-C6	2.20	1.41	1.39
2	A	1341	OFH	C11-C1	2.22	1.54	1.51
2	C	1341	OFH	C16-CL	2.26	1.79	1.73
2	D	1341	OFH	C12-C1	2.42	1.54	1.51
2	B	1341	OFH	C16-CL	2.58	1.80	1.73
2	A	1341	OFH	C24-C14	2.61	1.53	1.51
2	A	1341	OFH	C25-C14	2.99	1.54	1.51
2	D	1341	OFH	C16-CL	3.05	1.81	1.73
2	A	1341	OFH	C12-C1	3.31	1.56	1.51
2	D	1341	OFH	C25-C14	3.74	1.54	1.51
2	E	1341	OFH	C25-C14	3.97	1.54	1.51

All (63) bond angle outliers are listed below:

Mol	Chain	Res	Type	Atoms	Z	Observed(°)	Ideal(°)
2	C	1341	OFH	O23-S2-O22	-9.19	109.95	118.72
2	D	1341	OFH	O23-S2-O22	-8.95	110.18	118.72
2	E	1341	OFH	O23-S2-O22	-7.18	111.87	118.72
2	A	1341	OFH	O23-S2-O22	-6.21	112.79	118.72
2	E	1341	OFH	C25-C14-N17	-5.61	111.51	117.36
2	C	1341	OFH	C25-C14-N17	-5.60	111.53	117.36
2	A	1341	OFH	C20-C6-C16	-4.63	115.63	119.00
2	A	1341	OFH	C21-C16-CL	-4.22	112.00	118.50
2	A	1341	OFH	C25-C14-N17	-4.13	113.06	117.36
2	E	1341	OFH	C6-C16-CL	-4.04	118.60	121.54
2	D	1341	OFH	C25-C14-N17	-3.81	113.38	117.36
2	B	1341	OFH	C16-C6-S2	-3.76	120.92	123.35
2	B	1341	OFH	C25-C14-N17	-3.74	113.46	117.36
2	B	1341	OFH	C6-C16-CL	-3.65	118.89	121.54
2	D	1341	OFH	F36-C15-C26	-3.54	105.73	112.19
2	A	1341	OFH	C38-C29-C21	-3.34	115.87	120.56

Continued on next page...

Continued from previous page...

Mol	Chain	Res	Type	Atoms	Z	Observed(°)	Ideal(°)
2	A	1341	OFH	F36-C15-C26	-3.02	106.67	112.19
2	B	1341	OFH	F35-C15-C26	-2.93	106.84	112.19
2	A	1341	OFH	C16-C6-S2	-2.89	121.47	123.35
2	E	1341	OFH	O23-S2-C5	-2.78	105.59	108.24
2	B	1341	OFH	O23-S2-O22	-2.67	116.17	118.72
2	D	1341	OFH	C16-C6-S2	-2.67	121.62	123.35
2	E	1341	OFH	F35-C15-C26	-2.66	107.34	112.19
2	B	1341	OFH	F34-C15-C26	-2.63	107.38	112.19
2	C	1341	OFH	C9-N3-C7	-2.51	107.79	111.69
2	E	1341	OFH	O22-S2-C5	-2.38	105.97	108.24
2	C	1341	OFH	C20-C6-C16	-2.31	117.31	119.00
2	C	1341	OFH	F34-C15-C26	-2.30	108.00	112.19
2	C	1341	OFH	C7-C13-N17	-2.28	109.98	116.38
2	D	1341	OFH	O23-S2-C5	-2.24	106.10	108.24
2	E	1341	OFH	C20-C6-C16	-2.20	117.39	119.00
2	E	1341	OFH	F34-C15-C26	-2.08	108.40	112.19
2	C	1341	OFH	F35-C15-C26	-2.03	108.49	112.19
2	C	1341	OFH	F36-C15-F35	2.02	111.49	106.84
2	C	1341	OFH	C6-S2-C5	2.03	107.18	104.81
2	E	1341	OFH	F35-C15-F34	2.04	111.52	106.84
2	A	1341	OFH	F36-C15-F34	2.12	111.72	106.84
2	C	1341	OFH	O22-S2-C6	2.16	112.00	107.55
2	D	1341	OFH	C11-C1-C4	2.20	117.46	115.23
2	D	1341	OFH	C6-S2-C5	2.28	107.47	104.81
2	D	1341	OFH	F36-C15-F34	2.31	112.14	106.84
2	C	1341	OFH	C10-C7-N3	2.37	106.66	103.19
2	A	1341	OFH	C6-C16-CL	2.42	123.30	121.54
2	C	1341	OFH	O30-C13-N17	2.46	128.75	123.04
2	A	1341	OFH	C29-O28-C26	2.53	122.60	119.49
2	B	1341	OFH	C6-S2-C5	2.59	107.83	104.81
2	B	1341	OFH	C11-C1-C4	2.67	117.94	115.23
2	A	1341	OFH	C21-C16-C6	2.74	124.69	121.36
2	A	1341	OFH	C12-C1-C4	2.80	118.06	115.23
2	D	1341	OFH	O22-S2-C6	2.83	113.38	107.55
2	B	1341	OFH	F35-C15-F34	2.92	113.56	106.84
2	C	1341	OFH	C29-O28-C26	2.95	123.12	119.49
2	C	1341	OFH	C14-N17-C13	2.97	127.11	122.17
2	A	1341	OFH	C20-C38-C29	2.98	123.50	119.74
2	C	1341	OFH	C7-N3-C4	3.20	122.33	118.02
2	E	1341	OFH	C11-C1-C4	3.38	118.66	115.23
2	A	1341	OFH	O28-C26-C15	3.42	112.30	106.59
2	A	1341	OFH	C14-N17-C13	3.56	128.09	122.17

Continued on next page...

Continued from previous page...

Mol	Chain	Res	Type	Atoms	Z	Observed(°)	Ideal(°)
2	D	1341	OFH	C14-N17-C13	3.72	128.35	122.17
2	E	1341	OFH	O22-S2-C6	4.14	116.06	107.55
2	A	1341	OFH	C6-S2-C5	4.46	110.02	104.81
2	D	1341	OFH	C29-O28-C26	5.65	126.43	119.49
2	E	1341	OFH	C29-O28-C26	6.66	127.67	119.49

There are no chirality outliers.

There are no torsion outliers.

There are no ring outliers.

4 monomers are involved in 4 short contacts:

Mol	Chain	Res	Type	Clashes	Symm-Clashes
2	A	1341	OFH	1	0
2	B	1341	OFH	1	0
2	C	1341	OFH	1	0
2	E	1341	OFH	1	0

5.7 Other polymers [i](#)

There are no such residues in this entry.

5.8 Polymer linkage issues [i](#)

There are no chain breaks in this entry.

6 Fit of model and data ⓘ

6.1 Protein, DNA and RNA chains ⓘ

In the following table, the column labelled ‘#RSRZ> 2’ contains the number (and percentage) of RSRZ outliers, followed by percent RSRZ outliers for the chain as percentile scores relative to all X-ray entries and entries of similar resolution. The OWAB column contains the minimum, median, 95th percentile and maximum values of the occupancy-weighted average B-factor per residue. The column labelled ‘Q< 0.9’ lists the number of (and percentage) of residues with an average occupancy less than 0.9.

Mol	Chain	Analysed	<RSRZ>	#RSRZ>2		OWAB(Å ²)	Q<0.9
1	A	219/225 (97%)	-0.18	0	100 100	14, 23, 34, 52	8 (3%)
1	B	219/225 (97%)	-0.33	0	100 100	18, 28, 46, 59	9 (4%)
1	C	219/225 (97%)	-0.14	2 (0%)	85 86	21, 31, 49, 57	12 (5%)
1	D	219/225 (97%)	0.09	3 (1%)	78 78	18, 31, 51, 62	12 (5%)
1	E	219/225 (97%)	-0.26	2 (0%)	85 86	25, 35, 48, 64	13 (5%)
1	K	89/225 (39%)	1.95	39 (43%)	0 1	34, 61, 76, 87	7 (7%)
All	All	1184/1350 (87%)	-0.01	46 (3%)	43 45	14, 31, 58, 87	61 (5%)

All (46) RSRZ outliers are listed below:

Mol	Chain	Res	Type	RSRZ
1	K	289	VAL	5.1
1	K	291	VAL	4.9
1	K	245	ASP	4.7
1	K	309	TRP	4.3
1	K	285	VAL	4.3
1	K	334	TYR	4.3
1	K	246	ALA	4.2
1	K	247	LEU	4.1
1	K	283	GLY	4.1
1	K	243	ASP	4.0
1	K	249	GLU	3.9
1	K	284	ASN	3.9
1	K	333	SER	3.8
1	K	308	SER	3.8
1	E	122	THR	3.7
1	K	252	ALA	3.5
1	K	290	LEU	3.5
1	K	250	ALA	3.4
1	K	257	VAL	3.4

Continued on next page...

Continued from previous page...

Mol	Chain	Res	Type	RSRZ
1	K	258	SER	3.2
1	K	332	ALA	3.1
1	K	311	LEU	3.0
1	K	287	HIS	3.0
1	K	307	ASN	3.0
1	K	282	THR	3.0
1	E	340	ILE	2.9
1	K	310	GLY	2.9
1	K	329	CYS	2.9
1	K	294	TYR	2.8
1	K	269	PHE	2.7
1	K	304	LEU	2.6
1	D	221	LYS	2.5
1	K	295	GLY	2.5
1	K	330	GLY	2.5
1	K	288	GLY	2.4
1	K	259	VAL	2.4
1	C	168	ILE	2.3
1	K	261	ILE	2.3
1	D	228	ASN	2.3
1	K	244	GLU	2.2
1	K	306	LYS	2.2
1	C	299	GLY	2.2
1	D	227	LYS	2.2
1	K	318	TYR	2.1
1	K	322	ALA	2.1
1	K	248	LYS	2.0

6.2 Non-standard residues in protein, DNA, RNA chains [i](#)

There are no non-standard protein/DNA/RNA residues in this entry.

6.3 Carbohydrates [i](#)

There are no carbohydrates in this entry.

6.4 Ligands [i](#)

In the following table, the Atoms column lists the number of modelled atoms in the group and the number defined in the chemical component dictionary. LLDF column lists the quality of electron density of the group with respect to its neighbouring residues in protein, DNA or RNA chains.

The B-factors column lists the minimum, median, 95th percentile and maximum values of B factors of atoms in the group. The column labelled 'Q< 0.9' lists the number of atoms with occupancy less than 0.9.

Mol	Type	Chain	Res	Atoms	RSCC	RSR	LLDF	B-factors(Å ²)	Q<0.9
2	OFH	E	1341	39/39	0.93	0.14	1.85	29,36,67,70	0
2	OFH	D	1341	39/39	0.94	0.15	0.73	21,26,44,61	0
2	OFH	A	1341	39/39	0.95	0.15	0.59	17,21,40,51	0
2	OFH	C	1341	39/39	0.95	0.11	0.08	20,25,44,74	0
2	OFH	B	1341	39/39	0.96	0.10	-0.21	19,24,36,59	0

6.5 Other polymers [i](#)

There are no such residues in this entry.