



Full wwPDB X-ray Structure Validation Report ⓘ

Feb 1, 2016 – 12:52 AM GMT

PDB ID : 2C11
Title : CRYSTAL STRUCTURE OF THE 2-HYDRAZINOPYRIDINE OF SEMIC
ARBAZIDE-SENSITIVE AMINE OXIDASE
Authors : Jakobsson, E.; Kleywegt, G.J.
Deposited on : 2005-09-09
Resolution : 2.90 Å(reported)

This is a Full wwPDB X-ray Structure Validation Report for a publicly released PDB entry.
We welcome your comments at validation@mail.wwpdb.org
A user guide is available at
<http://wwpdb.org/validation/2016/XrayValidationReportHelp>
with specific help available everywhere you see the ⓘ symbol.

The following versions of software and data (see [references ⓘ](#)) were used in the production of this report:

MolProbity : 4.02b-467
Mogul : 1.7 (RC4), CSD as536be (2015)
Xtriage (Phenix) : 1.9-1692
EDS : rb-20026688
Percentile statistics : 20151230.v01 (using entries in the PDB archive December 30th 2015)
Refmac : 5.8.0135
CCP4 : 6.5.0
Ideal geometry (proteins) : Engh & Huber (2001)
Ideal geometry (DNA, RNA) : Parkinson et al. (1996)
Validation Pipeline (wwPDB-VP) : trunk26865

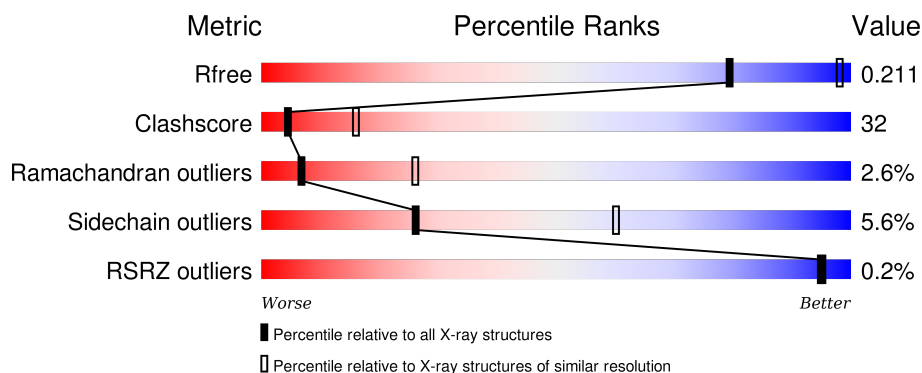
1 Overall quality at a glance

The following experimental techniques were used to determine the structure:

X-RAY DIFFRACTION

The reported resolution of this entry is 2.90 Å.

Percentile scores (ranging between 0-100) for global validation metrics of the entry are shown in the following graphic. The table shows the number of entries on which the scores are based.



Metric	Whole archive (#Entries)	Similar resolution (#Entries, resolution range(Å))
R_{free}	91344	1451 (2.90-2.90)
Clashscore	102246	1668 (2.90-2.90)
Ramachandran outliers	100387	1630 (2.90-2.90)
Sidechain outliers	100360	1632 (2.90-2.90)
RSRZ outliers	91569	1456 (2.90-2.90)

The table below summarises the geometric issues observed across the polymeric chains and their fit to the electron density. The red, orange, yellow and green segments on the lower bar indicate the fraction of residues that contain outliers for ≥ 3 , 2, 1 and 0 types of geometric quality criteria. A grey segment represents the fraction of residues that are not modelled. The numeric value for each fraction is indicated below the corresponding segment, with a dot representing fractions $\leq 5\%$. The upper red bar (where present) indicates the fraction of residues that have poor fit to the electron density. The numeric value is given above the bar.

Mol	Chain	Length	Quality of chain
1	A	735	
1	B	735	
1	C	735	
1	D	735	

The following table lists non-polymeric compounds, carbohydrate monomers and non-standard

residues in protein, DNA, RNA chains that are outliers for geometric or electron-density-fit criteria:

Mol	Type	Chain	Res	Chirality	Geometry	Clashes	Electron density
1	PAQ	A	471	X	-	-	-
1	PAQ	B	471	X	-	-	-
1	PAQ	C	471	X	-	-	-
1	PAQ	D	471	X	-	-	-
6	CU	A	1744	-	-	-	X
6	CU	B	1748	-	-	-	X

2 Entry composition

There are 12 unique types of molecules in this entry. The entry contains 21917 atoms, of which 0 are hydrogens and 0 are deuteriums.

In the tables below, the ZeroOcc column contains the number of atoms modelled with zero occupancy, the AltConf column contains the number of residues with at least one atom in alternate conformation and the Trace column contains the number of residues modelled with at most 2 atoms.

- Molecule 1 is a protein called MEMBRANE COPPER AMINE OXIDASE.

Mol	Chain	Residues	Atoms					ZeroOcc	AltConf	Trace
1	A	672	Total	C	N	O	S	0	0	1
			5340	3434	924	965	17			
1	B	672	Total	C	N	O	S	0	0	1
			5340	3434	924	965	17			
1	C	672	Total	C	N	O	S	0	0	1
			5340	3434	924	965	17			
1	D	672	Total	C	N	O	S	0	0	1
			5340	3434	924	965	17			

- Molecule 2 is a polymer of unknown type called SUGAR (2-MER).

Mol	Chain	Residues	Atoms				ZeroOcc	AltConf
2	A	2	Total	C	N	O	0	0
			28	16	2	10		
2	C	2	Total	C	N	O	0	0
			28	16	2	10		

- Molecule 3 is a polymer of unknown type called SUGAR (2-MER).

Mol	Chain	Residues	Atoms				ZeroOcc	AltConf
3	A	2	Total	C	N	O	0	0
			24	14	1	9		

- Molecule 4 is SUGAR (N-ACETYL-D-GLUCOSAMINE) (three-letter code: NAG) (formula: C₈H₁₅NO₆).



Mol	Chain	Residues	Atoms				ZeroOcc	AltConf
4	A	1	Total	C	N	O	0	0
			14	8	1	5		
4	A	1	Total	C	N	O	0	0
			14	8	1	5		
4	B	1	Total	C	N	O	0	0
			14	8	1	5		
4	B	1	Total	C	N	O	0	0
			14	8	1	5		
4	B	1	Total	C	N	O	0	0
			14	8	1	5		
4	C	1	Total	C	N	O	0	0
			14	8	1	5		
4	C	1	Total	C	N	O	0	0
			14	8	1	5		
4	D	1	Total	C	N	O	0	0
			14	8	1	5		
4	D	1	Total	C	N	O	0	0
			14	8	1	5		

- Molecule 5 is CALCIUM ION (three-letter code: CA) (formula: Ca).

Mol	Chain	Residues	Atoms		ZeroOcc	AltConf
5	B	2	Total	Ca	0	0
			2	2		
5	A	2	Total	Ca	0	0
			2	2		
5	D	2	Total	Ca	0	0
			2	2		

Continued on next page...

Continued from previous page...

Mol	Chain	Residues	Atoms		ZeroOcc	AltConf
5	C	2	Total	Ca	0	0
			2	2		

- Molecule 6 is COPPER (II) ION (three-letter code: CU) (formula: Cu).

Mol	Chain	Residues	Atoms		ZeroOcc	AltConf
6	B	8	Total	Cu	0	0
			8	8		
6	A	7	Total	Cu	0	0
			7	7		
6	D	7	Total	Cu	0	0
			7	7		
6	C	8	Total	Cu	0	0
			8	8		

- Molecule 7 is CHLORIDE ION (three-letter code: CL) (formula: Cl).

Mol	Chain	Residues	Atoms		ZeroOcc	AltConf
7	A	2	Total	Cl	0	0
			2	2		
7	D	1	Total	Cl	0	0
			1	1		
7	C	1	Total	Cl	0	0
			1	1		

- Molecule 8 is a polymer of unknown type called SUGAR (3-MER).

Mol	Chain	Residues	Atoms				ZeroOcc	AltConf
8	B	3	Total	C	N	O	0	0
			39	22	2	15		
8	D	3	Total	C	N	O	0	0
			39	22	2	15		

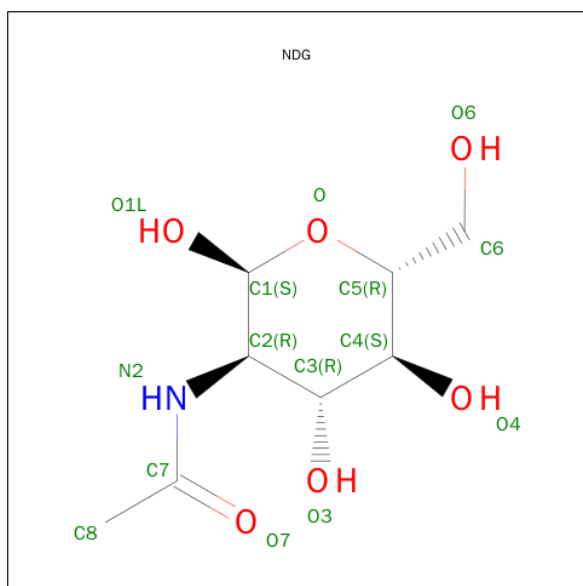
- Molecule 9 is a polymer of unknown type called SUGAR (5-MER).

Mol	Chain	Residues	Atoms				ZeroOcc	AltConf
9	B	5	Total	C	N	O	0	0
			60	34	2	24		
9	D	5	Total	C	N	O	0	0
			60	34	2	24		

- Molecule 10 is a polymer of unknown type called SUGAR (3-MER).

Mol	Chain	Residues	Atoms				ZeroOcc	AltConf
10	C	3	Total	C	N	O	0	0
			38	22	2	14		

- Molecule 11 is SUGAR (2-(ACETYLAMINO)-2-DEOXY-A-D-GLUCOPYRANOSE) (three-letter code: NDG) (formula: $C_8H_{15}NO_6$).



Mol	Chain	Residues	Atoms				ZeroOcc	AltConf
11	D	1	Total	C	N	O	0	0
			14	8	1	5		

- Molecule 12 is water.

Mol	Chain	Residues	Atoms		ZeroOcc	AltConf
12	A	19	Total	O	0	0
			19	19		
12	B	20	Total	O	0	0
			20	20		
12	C	11	Total	O	0	0
			11	11		
12	D	9	Total	O	0	0
			9	9		

4 Data and refinement statistics

Property	Value	Source
Space group	P 43	Depositor
Cell constants a, b, c, α , β , γ	127.40 Å 127.40 Å 219.36 Å 90.00° 90.00° 90.00°	Depositor
Resolution (Å)	20.00 – 2.90 29.75 – 2.60	Depositor EDS
% Data completeness (in resolution range)	90.7 (20.00-2.90) 90.6 (29.75-2.60)	Depositor EDS
R_{merge}	0.16	Depositor
R_{sym}	(Not available)	Depositor
$\langle I/\sigma(I) \rangle$ ¹	1.51 (at 2.61 Å)	Xtriage
Refinement program	CNS 1.1	Depositor
R, R_{free}	0.215 , 0.276 0.214 , 0.211	Depositor DCC
R_{free} test set	3370 reflections (4.85%)	DCC
Wilson B-factor (Å ²)	55.3	Xtriage
Anisotropy	0.549	Xtriage
Bulk solvent k_{sol} (e/Å ³), B_{sol} (Å ²)	0.30 , 33.6	EDS
Estimated twinning fraction	0.458 for h,-k,-l	Xtriage
L-test for twinning ²	$\langle L \rangle = 0.50$, $\langle L^2 \rangle = 0.33$	Xtriage
Outliers	0 of 96971 reflections	Xtriage
F_o, F_c correlation	0.94	EDS
Total number of atoms	21917	wwPDB-VP
Average B, all atoms (Å ²)	62.0	wwPDB-VP

Xtriage's analysis on translational NCS is as follows: *The largest off-origin peak in the Patterson function is 3.36% of the height of the origin peak. No significant pseudotranslation is detected.*

¹Intensities estimated from amplitudes.

²Theoretical values of $\langle |L| \rangle$, $\langle L^2 \rangle$ for acentric reflections are 0.5, 0.375 respectively for untwinned datasets, and 0.333, 0.2 for perfectly twinned datasets.

5 Model quality

5.1 Standard geometry

Bond lengths and bond angles in the following residue types are not validated in this section: PAQ, BMA, NAG, CL, CA, NDG, FUL, CU, MAN

The Z score for a bond length (or angle) is the number of standard deviations the observed value is removed from the expected value. A bond length (or angle) with $|Z| > 5$ is considered an outlier worth inspection. RMSZ is the root-mean-square of all Z scores of the bond lengths (or angles).

Mol	Chain	Bond lengths		Bond angles	
		RMSZ	# Z >5	RMSZ	# Z >5
1	A	0.50	0/5488	0.72	2/7481 (0.0%)
1	B	0.48	0/5488	0.72	1/7481 (0.0%)
1	C	0.49	0/5488	0.71	2/7481 (0.0%)
1	D	0.48	0/5488	0.72	1/7481 (0.0%)
All	All	0.49	0/21952	0.72	6/29924 (0.0%)

Chiral center outliers are detected by calculating the chiral volume of a chiral center and verifying if the center is modelled as a planar moiety or with the opposite hand. A planarity outlier is detected by checking planarity of atoms in a peptide group, atoms in a mainchain group or atoms of a sidechain that are expected to be planar.

Mol	Chain	#Chirality outliers	#Planarity outliers
1	A	1	0
1	B	1	0
1	C	1	0
1	D	1	0
All	All	4	0

There are no bond length outliers.

All (6) bond angle outliers are listed below:

Mol	Chain	Res	Type	Atoms	Z	Observed(°)	Ideal(°)
1	A	59	LEU	CA-CB-CG	7.19	131.83	115.30
1	D	373	GLY	N-CA-C	-6.13	97.78	113.10
1	B	373	GLY	N-CA-C	-5.95	98.23	113.10
1	C	204	ARG	N-CA-C	5.47	125.78	111.00
1	A	204	ARG	N-CA-C	5.24	125.15	111.00
1	C	202	LYS	N-CA-C	-5.03	97.43	111.00

All (4) chirality outliers are listed below:

Mol	Chain	Res	Type	Atom
1	A	471	PAQ	CG
1	B	471	PAQ	CG
1	C	471	PAQ	CG
1	D	471	PAQ	CG

There are no planarity outliers.

5.2 Too-close contacts [i](#)

In the following table, the Non-H and H(model) columns list the number of non-hydrogen atoms and hydrogen atoms in the chain respectively. The H(added) column lists the number of hydrogen atoms added and optimized by MolProbity. The Clashes column lists the number of clashes within the asymmetric unit, whereas Symm-Clashes lists symmetry related clashes.

Mol	Chain	Non-H	H(model)	H(added)	Clashes	Symm-Clashes
1	A	5340	0	5112	410	0
1	B	5340	0	5110	323	0
1	C	5340	0	5112	399	0
1	D	5340	0	5111	338	0
2	A	28	0	25	2	0
2	C	28	0	25	3	0
3	A	24	0	22	4	0
4	A	28	0	26	4	0
4	B	42	0	39	3	0
4	C	28	0	26	2	0
4	D	28	0	26	2	0
5	A	2	0	0	0	0
5	B	2	0	0	0	0
5	C	2	0	0	0	0
5	D	2	0	0	0	0
6	A	7	0	0	0	0
6	B	8	0	0	0	0
6	C	8	0	0	0	0
6	D	7	0	0	0	0
7	A	2	0	0	0	0
7	C	1	0	0	0	0
7	D	1	0	0	0	0
8	B	39	0	34	1	0
8	D	39	0	34	5	0
9	B	60	0	52	3	0
9	D	60	0	52	0	0
10	C	38	0	34	5	0
11	D	14	0	13	0	0

Continued on next page...

Continued from previous page...

Mol	Chain	Non-H	H(model)	H(added)	Clashes	Symm-Clashes
12	A	19	0	0	5	0
12	B	20	0	0	5	0
12	C	11	0	0	5	0
12	D	9	0	0	4	0
All	All	21917	0	20853	1388	0

The all-atom clashscore is defined as the number of clashes found per 1000 atoms (including hydrogen atoms). The all-atom clashscore for this structure is 32.

All (1388) close contacts within the same asymmetric unit are listed below, sorted by their clash magnitude.

Atom-1	Atom-2	Interatomic distance (Å)	Clash overlap (Å)
1:B:360:VAL:HG11	1:B:363:ILE:HG13	1.37	1.04
1:C:90:ARG:HG2	1:C:91:PRO:HD2	1.42	1.02
1:B:106:LYS:HB2	1:B:637:ARG:HH21	1.27	0.99
1:A:90:ARG:HG2	1:A:91:PRO:HD2	1.43	0.96
1:A:344:PHE:HA	1:A:390:GLY:HA2	1.45	0.95
1:D:360:VAL:HG11	1:D:363:ILE:HG13	1.49	0.94
1:C:441:ARG:HD2	12:C:2006:HOH:O	1.70	0.92
1:D:195:LEU:HB3	1:D:201:TYR:HB2	1.51	0.92
1:C:587:LEU:HD12	1:C:588:TYR:N	1.86	0.91
1:C:344:PHE:HA	1:C:390:GLY:HA2	1.50	0.90
1:C:278:GLU:O	1:C:282:GLU:HG3	1.72	0.90
8:D:1731:NAG:O3	8:D:1737:BMA:H2	1.72	0.90
1:D:225:THR:HB	1:D:227:PHE:CE1	2.07	0.89
10:C:1732:NAG:H61	10:C:1733:NAG:C1	2.02	0.89
1:B:242:HIS:HD2	1:B:244:GLY:H	1.17	0.89
1:A:187:GLU:HB3	1:A:274:LEU:HD12	1.55	0.89
1:B:187:GLU:HB3	1:B:274:LEU:HD11	1.56	0.88
1:C:192:SER:HB2	1:C:203:HIS:HE1	1.39	0.88
1:D:548:PRO:HG3	1:D:560:GLN:HE22	1.37	0.88
1:C:315:GLN:HG3	1:D:315:GLN:HE21	1.38	0.88
1:D:187:GLU:HB3	1:D:274:LEU:HD11	1.54	0.88
1:C:360:VAL:HG22	1:C:530:LEU:HD23	1.56	0.87
3:A:1732:NAG:H4	3:A:1733:FUL:H61	1.55	0.87
1:B:184:PHE:CD2	1:B:206:ARG:HD2	2.11	0.86
1:D:242:HIS:HD2	1:D:244:GLY:H	1.21	0.85
1:B:548:PRO:HG3	1:B:560:GLN:HE22	1.40	0.85
1:A:587:LEU:HD12	1:A:588:TYR:N	1.93	0.84
1:B:225:THR:HB	1:B:227:PHE:CE1	2.13	0.84
1:C:608:LEU:HD11	1:C:704:PHE:CE1	2.13	0.84

Continued on next page...

Continued from previous page...

Atom-1	Atom-2	Interatomic distance (Å)	Clash overlap (Å)
1:D:180:ASP:HB3	1:D:206:ARG:HH12	1.42	0.84
1:B:195:LEU:HB3	1:B:201:TYR:HB2	1.59	0.84
1:C:187:GLU:HB3	1:C:274:LEU:HD12	1.58	0.83
1:B:360:VAL:HG11	1:B:363:ILE:CG1	2.08	0.83
1:B:134:PRO:O	1:B:136:PRO:HD3	1.77	0.83
1:A:329:ARG:HH21	1:A:336:THR:HG23	1.44	0.83
1:A:315:GLN:HG3	1:B:315:GLN:NE2	1.92	0.83
1:C:315:GLN:HG3	1:D:315:GLN:NE2	1.93	0.83
1:A:278:GLU:O	1:A:282:GLU:HG3	1.79	0.82
1:D:134:PRO:O	1:D:136:PRO:HD3	1.80	0.82
1:A:315:GLN:HG3	1:B:315:GLN:HE21	1.44	0.82
1:B:441:ARG:HD2	12:B:2011:HOH:O	1.77	0.82
1:C:439:PRO:HA	1:C:456:ALA:HA	1.61	0.82
1:A:441:ARG:HH11	1:A:441:ARG:HG2	1.43	0.81
1:A:198:CYS:HB3	1:A:288:VAL:HG11	1.62	0.81
1:B:94:ASN:ND2	1:B:132:ARG:HB3	1.95	0.81
1:B:173:PHE:HE2	1:B:177:LEU:HD11	1.45	0.81
1:D:210:THR:HG22	1:D:229:LEU:HD22	1.62	0.80
1:D:94:ASN:ND2	1:D:132:ARG:HB3	1.96	0.80
1:D:163:PRO:HB3	8:D:1730:NAG:H82	1.63	0.80
1:B:106:LYS:HB2	1:B:637:ARG:NH2	1.97	0.79
1:A:58:GLN:HE22	1:A:327:GLY:HA3	1.47	0.79
1:B:469:LEU:HD12	1:B:471:PAQ:H3	1.65	0.78
1:A:360:VAL:HG21	1:A:363:ILE:HD11	1.65	0.78
1:D:225:THR:HB	1:D:227:PHE:HE1	1.47	0.78
1:A:588:TYR:HB3	1:A:604:ARG:HA	1.66	0.77
1:A:546:PHE:CD1	1:B:616:PRO:HD3	2.20	0.77
1:C:264:VAL:HG13	1:C:271:TYR:HB2	1.66	0.77
1:A:608:LEU:HD11	1:A:704:PHE:CE1	2.19	0.77
1:A:264:VAL:CG1	1:A:271:TYR:HB2	2.15	0.77
1:A:588:TYR:HB2	1:A:603:TYR:O	1.85	0.76
1:C:198:CYS:HB3	1:C:288:VAL:HG11	1.67	0.76
1:C:157:VAL:O	1:C:161:GLY:HA2	1.84	0.76
1:B:216:ARG:HD2	1:B:225:THR:OG1	1.86	0.76
1:C:514:HIS:HE1	12:C:2007:HOH:O	1.65	0.76
1:C:361:TYR:HB2	1:C:531:ASP:OD2	1.86	0.76
1:C:329:ARG:HH21	1:C:336:THR:HG23	1.51	0.76
1:C:587:LEU:HD12	1:C:588:TYR:H	1.49	0.76
1:A:111:ALA:O	1:A:115:ARG:HB2	1.86	0.76
1:A:264:VAL:HG13	1:A:271:TYR:HB2	1.68	0.76
1:A:145:PRO:HD3	1:A:151:TYR:CE2	2.20	0.75

Continued on next page...

Continued from previous page...

Atom-1	Atom-2	Interatomic distance (Å)	Clash overlap (Å)
1:C:588:TYR:HB3	1:C:604:ARG:HA	1.67	0.75
1:D:360:VAL:HG11	1:D:363:ILE:CG1	2.17	0.75
1:A:335:TRP:CE2	1:A:479:PHE:HB3	2.21	0.74
1:A:647:VAL:HG12	12:A:2015:HOH:O	1.88	0.74
1:B:636:GLN:NE2	1:B:667:GLU:HB3	2.02	0.74
1:C:192:SER:CB	1:C:203:HIS:HE1	1.99	0.74
1:D:636:GLN:NE2	1:D:667:GLU:HB3	2.02	0.74
1:C:360:VAL:HG22	1:C:530:LEU:CD2	2.18	0.74
1:C:125:LEU:HD11	1:C:140:GLU:HB3	1.68	0.74
1:A:157:VAL:O	1:A:161:GLY:HA2	1.87	0.74
1:A:375:ASN:HD22	1:A:376:SER:N	1.85	0.74
1:A:195:LEU:HB3	1:A:201:TYR:CB	2.18	0.73
1:A:198:CYS:HA	1:A:290:LEU:CD2	2.18	0.73
1:B:344:PHE:HA	1:B:390:GLY:HA2	1.69	0.73
1:C:195:LEU:HB3	1:C:201:TYR:CB	2.18	0.73
1:A:106:LYS:HB2	1:A:637:ARG:NH1	2.03	0.73
1:C:360:VAL:HG11	1:C:363:ILE:HG13	1.71	0.73
1:C:588:TYR:HB2	1:C:603:TYR:O	1.88	0.73
1:D:389:PHE:HE1	1:D:650:GLN:HE21	1.37	0.72
1:A:198:CYS:HA	1:A:290:LEU:HD23	1.71	0.72
1:B:687:HIS:ND1	1:B:689:GLU:HG2	2.04	0.72
1:A:202:LYS:C	1:A:204:ARG:H	1.92	0.72
1:C:264:VAL:CG1	1:C:271:TYR:HB2	2.19	0.72
1:C:546:PHE:CD1	1:D:616:PRO:HD3	2.23	0.72
1:C:58:GLN:HE22	1:C:327:GLY:HA3	1.55	0.72
1:D:369:LEU:HD11	1:D:371:ILE:HG13	1.70	0.72
1:B:229:LEU:HD12	1:B:245:LEU:HD23	1.70	0.72
1:A:88:GLN:O	1:A:174:GLN:HG2	1.90	0.72
2:C:1730:NAG:H61	2:C:1731:NAG:H82	1.70	0.72
1:A:184:PHE:CE2	1:A:206:ARG:HG3	2.25	0.72
1:A:588:TYR:CB	1:A:604:ARG:HA	2.19	0.72
1:C:234:SER:HB3	4:C:1735:NAG:O6	1.89	0.72
1:C:212:THR:HG22	12:C:2001:HOH:O	1.90	0.71
1:C:98:SER:HB3	1:C:417:LEU:HD23	1.73	0.71
1:D:185:ASN:O	1:D:189:PRO:HG2	1.91	0.71
1:A:76:THR:HG22	1:A:83:LEU:HD23	1.72	0.71
3:A:1733:FUL:H2	3:A:1733:FUL:H63	1.73	0.71
1:C:111:ALA:O	1:C:115:ARG:HB2	1.91	0.71
1:C:335:TRP:CE2	1:C:479:PHE:HB3	2.26	0.71
1:A:468:LEU:HD12	1:A:473:TYR:HE1	1.56	0.70
1:A:441:ARG:NH1	1:A:441:ARG:HG2	2.06	0.70

Continued on next page...

Continued from previous page...

Atom-1	Atom-2	Interatomic distance (Å)	Clash overlap (Å)
1:A:317:TYR:CD2	1:A:321:PRO:HA	2.26	0.70
1:D:141:LEU:HD23	1:D:154:ASP:HA	1.72	0.70
1:A:374:GLY:HA2	1:A:507:TYR:HB3	1.73	0.70
1:B:209:VAL:HG12	4:B:1735:NAG:H82	1.72	0.70
1:C:475:TRP:CE3	1:C:489:PHE:HB2	2.27	0.70
1:D:228:GLY:O	1:D:229:LEU:HD23	1.91	0.70
1:C:469:LEU:HG	1:C:471:PAQ:C4	2.21	0.70
1:B:225:THR:HB	1:B:227:PHE:HE1	1.55	0.70
1:C:360:VAL:HG21	1:C:363:ILE:HD11	1.73	0.70
1:A:272:ASP:HB2	1:A:276:GLN:NE2	2.07	0.70
1:A:475:TRP:CE3	1:A:489:PHE:HB2	2.27	0.70
1:B:538:TRP:CZ3	1:B:592:ASN:HB2	2.25	0.70
1:D:596:LYS:HD3	1:D:597:TRP:CZ2	2.27	0.69
1:B:185:ASN:O	1:B:189:PRO:HG2	1.92	0.69
1:A:587:LEU:HD12	1:A:588:TYR:H	1.55	0.69
1:A:361:TYR:HB2	1:A:531:ASP:OD2	1.92	0.69
1:B:588:TYR:HB3	1:B:604:ARG:HA	1.73	0.69
1:A:636:GLN:NE2	1:A:667:GLU:HB3	2.06	0.69
1:C:229:LEU:O	1:C:243:VAL:HG22	1.92	0.69
1:C:532:VAL:HB	1:C:537:ASN:ND2	2.06	0.69
1:C:192:SER:HB2	1:C:203:HIS:CE1	2.26	0.69
1:C:73:ARG:O	1:C:77:GLN:HG3	1.93	0.69
1:A:169:ARG:HH11	1:A:169:ARG:HG2	1.57	0.69
1:D:234:SER:HB3	4:D:1735:NAG:O6	1.92	0.69
1:C:220:SER:HB2	1:C:654:TRP:HB2	1.74	0.69
1:B:469:LEU:HD12	1:B:471:PAQ:C3	2.23	0.68
1:B:170:PRO:HA	1:B:651:ASN:ND2	2.07	0.68
1:C:242:HIS:CD2	1:C:498:ALA:HA	2.28	0.68
1:C:251:HIS:H	1:C:251:HIS:CD2	2.11	0.68
1:C:198:CYS:HA	1:C:290:LEU:CD2	2.23	0.68
1:B:187:GLU:HB3	1:B:274:LEU:CD1	2.23	0.68
1:B:468:LEU:HB2	1:B:471:PAQ:HN1	1.58	0.68
1:D:468:LEU:HB2	1:D:471:PAQ:HN1	1.57	0.68
1:C:198:CYS:HA	1:C:290:LEU:HD23	1.74	0.68
1:A:229:LEU:O	1:A:243:VAL:HG22	1.93	0.68
1:B:360:VAL:HG22	1:B:530:LEU:HD23	1.76	0.68
1:C:608:LEU:HD11	1:C:704:PHE:HE1	1.56	0.68
1:A:468:LEU:HB2	1:A:471:PAQ:HN1	1.57	0.68
1:A:82:GLY:O	1:A:94:ASN:HB2	1.94	0.68
1:C:612:GLY:HA2	1:D:585:ARG:NE	2.09	0.68
1:B:632:LEU:HD12	1:B:633:ALA:H	1.59	0.68

Continued on next page...

Continued from previous page...

Atom-1	Atom-2	Interatomic distance (Å)	Clash overlap (Å)
1:C:392:GLY:O	1:C:395:THR:HG22	1.93	0.67
1:A:376:SER:HB2	12:A:2002:HOH:O	1.93	0.67
1:C:306:VAL:HG21	1:D:718:TYR:O	1.95	0.67
1:D:147:PRO:O	1:D:149:PRO:HD3	1.95	0.67
1:A:350:PHE:CD2	1:A:362:GLU:HB2	2.30	0.67
1:C:380:MET:HG3	1:D:561:ARG:NE	2.09	0.67
1:A:360:VAL:HG22	1:A:530:LEU:HD23	1.77	0.67
1:C:315:GLN:HA	1:D:314:LEU:O	1.95	0.67
1:C:169:ARG:HH11	1:C:169:ARG:HG2	1.59	0.67
1:C:432:PHE:O	1:C:460:LEU:HD12	1.94	0.67
1:A:251:HIS:H	1:A:251:HIS:CD2	2.11	0.66
1:D:106:LYS:HB2	1:D:637:ARG:HH21	1.60	0.66
1:C:588:TYR:CB	1:C:604:ARG:HA	2.24	0.66
1:B:242:HIS:CD2	1:B:244:GLY:H	2.07	0.66
1:C:76:THR:HG22	1:C:83:LEU:HD23	1.77	0.66
1:D:198:CYS:SG	1:D:199:CYS:N	2.68	0.66
1:A:195:LEU:HB3	1:A:201:TYR:HB3	1.77	0.66
1:C:360:VAL:HG11	1:C:363:ILE:CG1	2.26	0.66
1:B:67:GLU:HG2	1:B:146:LEU:HD13	1.78	0.66
1:B:334:LEU:HB3	1:B:354:PHE:CE1	2.30	0.66
1:D:360:VAL:HG22	1:D:530:LEU:HD23	1.78	0.66
1:A:198:CYS:CB	1:A:288:VAL:HG11	2.25	0.66
1:C:225:THR:HB	1:C:227:PHE:CE1	2.30	0.66
1:C:242:HIS:HD2	1:C:498:ALA:HA	1.61	0.66
1:D:276:GLN:O	1:D:280:GLN:HG3	1.96	0.66
1:C:539:VAL:O	1:C:568:LEU:HD12	1.96	0.66
1:C:317:TYR:CD2	1:C:321:PRO:HA	2.31	0.66
1:B:369:LEU:HD12	1:B:370:ALA:H	1.61	0.66
1:D:210:THR:HG22	1:D:229:LEU:CD2	2.26	0.65
1:D:334:LEU:HB3	1:D:354:PHE:CE1	2.31	0.65
1:B:376:SER:O	1:B:380:MET:HB2	1.96	0.65
1:C:468:LEU:HB2	1:C:471:PAQ:HN1	1.62	0.65
1:A:140:GLU:OE1	1:A:160:HIS:CD2	2.50	0.65
1:B:182:MET:HG3	1:B:186:ARG:HH21	1.60	0.65
1:A:403:ASP:OD1	1:B:442:ARG:HG3	1.97	0.65
1:A:202:LYS:C	1:A:204:ARG:N	2.50	0.65
1:A:507:TYR:O	1:A:519:VAL:HG12	1.96	0.65
1:C:539:VAL:CG1	1:C:569:LEU:HD12	2.27	0.65
1:C:195:LEU:HB3	1:C:201:TYR:HB3	1.79	0.65
1:B:180:ASP:HB3	1:B:206:ARG:HH12	1.62	0.65
1:A:67:GLU:O	1:A:71:VAL:HG23	1.95	0.65

Continued on next page...

Continued from previous page...

Atom-1	Atom-2	Interatomic distance (Å)	Clash overlap (Å)
1:B:595:ASN:HB3	1:B:601:ARG:HG2	1.79	0.65
9:B:1733:NAG:H83	9:B:1733:NAG:O3	1.97	0.65
1:D:584:PRO:HG2	1:D:587:LEU:HB2	1.79	0.65
1:C:183:ILE:HG22	1:C:188:LEU:HG	1.78	0.65
1:B:596:LYS:HD3	1:B:597:TRP:CZ2	2.32	0.65
1:C:398:LEU:HD13	1:C:404:CYS:SG	2.37	0.65
1:C:455:LEU:HD13	1:C:722:SER:HA	1.78	0.65
1:A:517:GLY:HA3	1:A:686:PRO:HB2	1.77	0.65
1:D:588:TYR:HB3	1:D:604:ARG:HA	1.79	0.65
1:A:90:ARG:HH21	1:A:256:PRO:HD2	1.62	0.65
1:C:226:TRP:CD1	1:C:248:LEU:HD13	2.30	0.65
1:D:687:HIS:ND1	1:D:689:GLU:HG2	2.12	0.65
1:B:370:ALA:HA	1:B:521:THR:O	1.96	0.65
1:A:542:GLU:HA	1:A:565:THR:O	1.96	0.65
1:C:375:ASN:HD22	1:C:376:SER:N	1.93	0.64
1:A:445:SER:O	1:A:450:HIS:HA	1.97	0.64
1:D:451:TYR:HA	1:D:726:ARG:HA	1.80	0.64
1:C:76:THR:HA	1:C:83:LEU:CD2	2.27	0.64
1:A:402:VAL:HA	1:B:456:ALA:HB2	1.80	0.64
1:D:317:TYR:HE1	1:D:433:GLU:HB2	1.61	0.64
1:C:370:ALA:HA	1:C:521:THR:O	1.98	0.64
1:B:478:VAL:HB	1:B:486:GLU:HB3	1.79	0.64
1:D:170:PRO:HA	1:D:651:ASN:ND2	2.12	0.64
1:D:539:VAL:HG22	1:D:589:LEU:HD22	1.79	0.64
1:A:220:SER:HB2	1:A:654:TRP:HB2	1.80	0.64
1:C:573:GLU:CG	1:C:666:ASN:ND2	2.60	0.64
1:B:106:LYS:CB	1:B:637:ARG:HH21	2.08	0.64
1:C:537:ASN:HA	1:C:590:ALA:O	1.97	0.64
1:C:539:VAL:HB	1:C:569:LEU:HB2	1.79	0.64
1:D:187:GLU:HB3	1:D:274:LEU:CD1	2.26	0.64
1:B:179:ILE:O	1:B:183:ILE:HG13	1.98	0.64
1:C:187:GLU:HB3	1:C:274:LEU:CD1	2.27	0.64
1:D:344:PHE:HA	1:D:390:GLY:HA2	1.80	0.64
1:A:573:GLU:HG3	1:A:666:ASN:ND2	2.13	0.63
1:C:462:VAL:HB	1:C:477:THR:HG23	1.80	0.63
1:C:646:SER:HB2	1:C:658:VAL:HG23	1.79	0.63
1:D:106:LYS:HB2	1:D:637:ARG:NH2	2.13	0.63
1:D:334:LEU:HB3	1:D:354:PHE:HE1	1.63	0.63
1:D:570:GLU:O	1:D:668:THR:HA	1.98	0.63
1:D:329:ARG:NH2	1:D:336:THR:HB	2.14	0.63
1:C:143:VAL:HG12	1:C:144:GLY:N	2.14	0.63

Continued on next page...

Continued from previous page...

Atom-1	Atom-2	Interatomic distance (Å)	Clash overlap (Å)
1:B:173:PHE:CE2	1:B:177:LEU:HD11	2.31	0.63
1:B:334:LEU:HB3	1:B:354:PHE:HE1	1.64	0.63
1:B:141:LEU:HD23	1:B:154:ASP:HA	1.80	0.63
1:C:542:GLU:HA	1:C:565:THR:O	1.99	0.63
1:D:216:ARG:HD2	1:D:225:THR:OG1	1.99	0.63
1:C:225:THR:HB	1:C:227:PHE:HE1	1.64	0.63
1:A:649:ASN:HA	12:A:2016:HOH:O	1.98	0.63
1:B:198:CYS:HB3	1:B:288:VAL:HG11	1.80	0.63
1:D:369:LEU:HD11	1:D:371:ILE:CG1	2.28	0.62
1:A:90:ARG:CG	1:A:91:PRO:HD2	2.26	0.62
1:A:206:ARG:O	4:A:1734:NAG:H81	1.99	0.62
1:B:687:HIS:CE1	1:B:689:GLU:HG2	2.34	0.62
1:A:157:VAL:HG23	1:A:158:GLU:H	1.65	0.62
1:C:636:GLN:NE2	1:C:667:GLU:HB3	2.15	0.62
1:B:509:ASN:ND2	1:B:686:PRO:O	2.29	0.62
1:A:245:LEU:HD12	1:A:265:PHE:O	1.99	0.62
1:B:389:PHE:HE1	1:B:650:GLN:HE21	1.47	0.62
1:A:183:ILE:HG22	1:A:188:LEU:HG	1.81	0.62
1:B:632:LEU:HD12	1:B:633:ALA:N	2.14	0.62
1:C:334:LEU:HD13	1:C:481:PRO:HA	1.81	0.62
1:D:441:ARG:HH11	1:D:441:ARG:HG2	1.64	0.62
1:D:242:HIS:CD2	1:D:244:GLY:H	2.11	0.62
1:A:67:GLU:HB3	1:A:146:LEU:CD2	2.29	0.62
1:A:392:GLY:O	1:A:395:THR:HG22	1.99	0.62
1:B:539:VAL:HG22	1:B:589:LEU:HD22	1.82	0.61
1:D:468:LEU:HD12	1:D:473:TYR:CE1	2.35	0.61
1:C:78:ARG:NH1	1:C:78:ARG:HB3	2.15	0.61
1:B:276:GLN:O	1:B:280:GLN:HG3	1.99	0.61
1:A:539:VAL:O	1:A:568:LEU:HD12	1.99	0.61
1:B:316:PHE:HE1	1:B:318:PRO:HA	1.65	0.61
1:B:210:THR:HG22	1:B:229:LEU:CD2	2.29	0.61
1:A:125:LEU:HD22	1:A:159:ARG:HH12	1.65	0.61
1:A:439:PRO:HA	1:A:456:ALA:HA	1.80	0.61
1:B:451:TYR:HA	1:B:726:ARG:HA	1.82	0.61
1:A:369:LEU:HA	1:A:384:TYR:O	2.00	0.61
1:C:90:ARG:O	1:C:93:ASP:HB2	2.00	0.61
1:A:608:LEU:HD11	1:A:704:PHE:HE1	1.62	0.61
1:D:98:SER:O	1:D:126:ALA:HA	2.00	0.61
1:A:138:VAL:O	1:A:164:LEU:HB2	2.00	0.61
1:D:386:ASP:HB3	1:D:468:LEU:HD13	1.82	0.61
1:B:595:ASN:O	1:B:597:TRP:N	2.34	0.61

Continued on next page...

Continued from previous page...

Atom-1	Atom-2	Interatomic distance (Å)	Clash overlap (Å)
1:B:239:PHE:CD2	1:B:470:ASN:HB3	2.36	0.61
1:C:619:SER:HB2	1:D:560:GLN:HG3	1.82	0.61
1:A:316:PHE:HA	1:A:407:LEU:HD12	1.82	0.61
1:C:487:ILE:O	1:C:702:GLY:HA3	2.00	0.61
1:A:75:LEU:O	1:A:79:LEU:HB2	2.00	0.61
1:B:497:SER:HB2	1:B:515:THR:HG22	1.81	0.61
1:C:106:LYS:HE2	1:C:110:LEU:HD11	1.83	0.61
1:C:184:PHE:CD2	1:C:206:ARG:HG3	2.36	0.61
1:A:432:PHE:O	1:A:460:LEU:HD12	2.00	0.61
1:C:402:VAL:HA	1:D:456:ALA:HB2	1.82	0.61
1:C:316:PHE:HA	1:C:407:LEU:HD12	1.82	0.61
1:A:467:THR:HG23	1:A:472:ASP:OD2	2.00	0.61
1:D:538:TRP:CZ3	1:D:592:ASN:HB2	2.36	0.61
1:C:573:GLU:HG2	1:C:666:ASN:ND2	2.15	0.60
1:A:472:ASP:OD1	1:A:493:GLY:HA3	2.01	0.60
1:C:153:ARG:NH1	1:C:153:ARG:HB3	2.15	0.60
1:A:360:VAL:HG11	1:A:363:ILE:CG1	2.31	0.60
1:B:209:VAL:HG12	4:B:1735:NAG:C8	2.30	0.60
1:C:167:HIS:CD2	1:C:221:GLY:HA2	2.35	0.60
1:C:85:ASP:OD2	1:C:420:GLN:HG3	2.01	0.60
1:A:310:PRO:HA	1:B:319:GLN:NE2	2.16	0.60
1:A:584:PRO:HG2	1:A:587:LEU:HB2	1.83	0.60
1:A:315:GLN:HE22	1:A:434:GLN:HA	1.66	0.60
1:A:157:VAL:HG23	1:A:158:GLU:N	2.16	0.60
1:C:468:LEU:HD12	1:C:473:TYR:HE1	1.66	0.60
1:C:184:PHE:CE2	1:C:206:ARG:HG3	2.36	0.60
1:C:525:HIS:HB2	1:C:627:TRP:CE3	2.36	0.60
1:A:90:ARG:HG2	1:A:91:PRO:CD	2.25	0.60
1:A:232:ASN:HB2	4:A:1734:NAG:H83	1.83	0.60
1:A:468:LEU:HD12	1:A:473:TYR:CE1	2.35	0.60
1:B:517:GLY:HA3	1:B:686:PRO:HB2	1.83	0.60
1:D:153:ARG:O	1:D:155:VAL:HG13	2.01	0.60
1:A:225:THR:HB	1:A:227:PHE:HE1	1.66	0.60
1:B:72:MET:O	1:B:76:THR:HG23	2.00	0.60
1:C:180:ASP:O	1:C:184:PHE:HD1	1.84	0.60
1:C:640:GLU:C	1:C:642:PRO:HD3	2.22	0.60
1:A:487:ILE:O	1:A:702:GLY:HA3	2.02	0.60
1:A:187:GLU:HB3	1:A:274:LEU:CD1	2.29	0.60
1:C:329:ARG:HH21	1:C:336:THR:CG2	2.13	0.60
1:D:296:THR:HG22	1:D:297:GLY:N	2.16	0.60
1:B:507:TYR:O	1:B:519:VAL:HG12	2.01	0.60

Continued on next page...

Continued from previous page...

Atom-1	Atom-2	Interatomic distance (Å)	Clash overlap (Å)
1:A:532:VAL:HB	1:A:537:ASN:ND2	2.16	0.60
1:B:468:LEU:HD12	1:B:473:TYR:CE1	2.35	0.60
1:A:110:LEU:O	1:A:114:ASP:OD2	2.20	0.60
1:A:225:THR:HB	1:A:227:PHE:CE1	2.36	0.60
1:D:497:SER:HB2	1:D:515:THR:HG22	1.83	0.60
1:C:110:LEU:HD21	1:C:361:TYR:CD1	2.37	0.60
1:D:381:THR:HG22	1:D:381:THR:O	2.02	0.60
1:A:167:HIS:CD2	1:A:221:GLY:HA2	2.37	0.60
1:A:133:GLN:HB2	1:A:134:PRO:HD2	1.82	0.60
1:B:386:ASP:HB3	1:B:468:LEU:HD13	1.84	0.60
1:C:353:ARG:HA	1:C:357:GLU:O	2.01	0.60
1:D:67:GLU:HG2	1:D:146:LEU:HD13	1.82	0.60
1:B:349:ILE:HD12	1:B:477:THR:HG21	1.82	0.59
1:D:198:CYS:HB3	1:D:288:VAL:HG11	1.84	0.59
1:A:564:VAL:HG22	1:B:506:LYS:HA	1.84	0.59
1:A:317:TYR:N	1:A:317:TYR:CD1	2.69	0.59
1:D:469:LEU:HD12	1:D:471:PAQ:H3	1.82	0.59
1:A:170:PRO:HA	1:A:651:ASN:HD21	1.67	0.59
1:C:191:ALA:HA	1:C:278:GLU:HB2	1.85	0.59
1:A:315:GLN:HA	1:B:314:LEU:O	2.03	0.59
1:C:157:VAL:HA	1:C:162:GLY:H	1.65	0.59
1:D:687:HIS:CE1	1:D:689:GLU:HG2	2.37	0.59
1:A:395:THR:HA	1:A:466:SER:HA	1.83	0.59
1:A:576:ALA:HA	1:A:633:ALA:HA	1.83	0.59
1:B:98:SER:O	1:B:126:ALA:HA	2.02	0.59
1:C:217:GLY:HA3	1:C:222:ASP:CB	2.31	0.59
1:C:231:TYR:CE1	1:C:293:ASP:HA	2.38	0.59
1:C:125:LEU:HD22	1:C:159:ARG:HH12	1.67	0.59
1:C:133:GLN:NE2	1:C:135:GLN:O	2.32	0.59
1:A:469:LEU:HG	1:A:471:PAQ:C4	2.32	0.59
1:B:181:GLN:O	1:B:185:ASN:HB2	2.02	0.59
1:C:67:GLU:O	1:C:71:VAL:HG23	2.03	0.59
1:C:369:LEU:HD12	1:C:384:TYR:O	2.03	0.59
1:C:474:VAL:O	1:C:489:PHE:HA	2.03	0.59
1:A:272:ASP:HB2	1:A:276:GLN:HE22	1.66	0.59
1:A:537:ASN:HA	1:A:590:ALA:O	2.03	0.59
1:C:352:VAL:O	1:C:358:ARG:HA	2.01	0.59
1:D:182:MET:HG3	1:D:186:ARG:HH21	1.67	0.59
1:D:474:VAL:O	1:D:489:PHE:HA	2.03	0.59
1:A:724:TYR:O	1:A:725:PHE:HB3	2.03	0.59
1:B:646:SER:OG	1:B:648:PHE:HD1	1.86	0.59

Continued on next page...

Continued from previous page...

Atom-1	Atom-2	Interatomic distance (Å)	Clash overlap (Å)
1:C:530:LEU:HD21	1:C:705:LEU:HD13	1.85	0.59
1:D:223:ARG:HG2	1:D:223:ARG:HH11	1.67	0.58
1:A:579:VAL:HA	1:A:631:GLN:HG3	1.85	0.58
1:D:130:PHE:CE1	8:D:1730:NAG:H62	2.37	0.58
1:D:360:VAL:HG22	1:D:530:LEU:CD2	2.33	0.58
1:A:247:LEU:HD23	1:A:264:VAL:HG23	1.85	0.58
1:B:198:CYS:SG	1:B:199:CYS:N	2.76	0.58
1:C:588:TYR:HB3	1:C:604:ARG:CA	2.34	0.58
1:B:58:GLN:OE1	1:B:328:SER:HB2	2.04	0.58
1:B:200:PHE:CD2	1:B:200:PHE:N	2.70	0.58
1:B:466:SER:HB3	1:B:475:TRP:HE1	1.68	0.58
1:A:360:VAL:HG22	1:A:530:LEU:CD2	2.34	0.58
1:B:229:LEU:O	1:B:243:VAL:HG22	2.04	0.58
1:C:462:VAL:HB	1:C:477:THR:CG2	2.33	0.58
1:C:138:VAL:O	1:C:164:LEU:HB2	2.03	0.58
1:C:623:ARG:HB3	1:C:656:PRO:HG2	1.85	0.58
8:D:1730:NAG:H61	8:D:1731:NAG:C1	2.34	0.58
1:B:170:PRO:HA	1:B:651:ASN:HD22	1.67	0.58
1:A:163:PRO:O	1:A:165:PRO:HD3	2.04	0.58
1:C:374:GLY:HA2	1:C:507:TYR:HB3	1.86	0.58
1:A:125:LEU:HD22	1:A:159:ARG:NH1	2.18	0.58
1:A:334:LEU:HD13	1:A:481:PRO:HA	1.85	0.58
1:D:509:ASN:ND2	1:D:686:PRO:O	2.30	0.58
1:B:570:GLU:O	1:B:668:THR:HA	2.04	0.58
1:B:106:LYS:HE3	1:B:361:TYR:CG	2.39	0.57
1:A:180:ASP:O	1:A:184:PHE:HD1	1.87	0.57
1:B:584:PRO:HG2	1:B:587:LEU:HB2	1.86	0.57
1:C:507:TYR:O	1:C:519:VAL:HG12	2.04	0.57
1:A:640:GLU:H	1:A:640:GLU:CD	2.06	0.57
1:A:90:ARG:O	1:A:93:ASP:HB2	2.04	0.57
1:A:588:TYR:HB3	1:A:604:ARG:CA	2.33	0.57
1:C:376:SER:O	1:C:380:MET:HB2	2.04	0.57
1:A:386:ASP:OD1	1:A:471:PAQ:N3	2.36	0.57
1:B:525:HIS:HE2	1:B:677:TRP:HB3	1.69	0.57
1:C:366:GLN:OE1	1:C:643:SER:HA	2.05	0.57
1:D:138:VAL:HG11	1:D:169:ARG:HB2	1.86	0.57
1:A:536:GLU:CD	1:A:536:GLU:H	2.08	0.57
1:A:206:ARG:O	4:A:1734:NAG:C8	2.53	0.57
1:A:171:VAL:HG23	1:A:176:TYR:OH	2.05	0.57
1:A:548:PRO:HA	1:A:559:LEU:O	2.04	0.57
1:A:145:PRO:HD3	1:A:151:TYR:CD2	2.40	0.57

Continued on next page...

Continued from previous page...

Atom-1	Atom-2	Interatomic distance (Å)	Clash overlap (Å)
1:C:573:GLU:HG3	1:C:666:ASN:ND2	2.20	0.57
1:D:195:LEU:HB3	1:D:201:TYR:CB	2.32	0.57
1:C:539:VAL:HG12	1:C:569:LEU:HD12	1.86	0.57
1:A:157:VAL:O	1:A:161:GLY:CA	2.53	0.57
1:C:640:GLU:H	1:C:640:GLU:CD	2.07	0.57
1:C:319:GLN:NE2	1:D:311:ALA:H	2.02	0.57
1:A:455:LEU:HD13	1:A:722:SER:HA	1.87	0.57
1:D:487:ILE:O	1:D:702:GLY:HA3	2.05	0.57
1:C:724:TYR:O	1:C:725:PHE:HB3	2.04	0.57
1:B:369:LEU:HD11	1:B:371:ILE:HG13	1.87	0.57
1:C:722:SER:HB3	1:D:304:SER:HB2	1.87	0.57
1:B:296:THR:HG22	1:B:297:GLY:N	2.19	0.57
1:A:336:THR:HG21	1:A:353:ARG:HD2	1.87	0.57
1:D:200:PHE:CD2	1:D:200:PHE:N	2.70	0.57
1:C:544:MET:HE2	1:D:613:GLU:HB2	1.85	0.57
1:D:181:GLN:O	1:D:185:ASN:HB2	2.04	0.57
1:D:508:GLY:HA3	1:D:517:GLY:O	2.04	0.57
1:D:528:VAL:HG23	1:D:676:ALA:O	2.04	0.57
1:A:184:PHE:O	1:A:189:PRO:HD3	2.05	0.56
1:A:536:GLU:CD	1:A:536:GLU:N	2.58	0.56
1:D:349:ILE:HD12	1:D:477:THR:HG21	1.86	0.56
1:B:242:HIS:HD2	1:B:244:GLY:N	1.97	0.56
1:D:242:HIS:HD2	1:D:244:GLY:N	2.00	0.56
1:A:530:LEU:HD21	1:A:705:LEU:HD13	1.87	0.56
1:C:106:LYS:HB2	1:C:637:ARG:NH1	2.20	0.56
1:D:142:VAL:CG2	1:D:155:VAL:HG11	2.35	0.56
1:A:225:THR:HG22	1:A:226:TRP:N	2.21	0.56
1:A:133:GLN:NE2	1:A:135:GLN:O	2.30	0.56
1:D:376:SER:O	1:D:380:MET:HB2	2.06	0.56
1:D:500:LEU:HD12	1:D:501:PHE:N	2.19	0.56
1:B:395:THR:O	1:B:425:ILE:HD13	2.05	0.56
1:A:242:HIS:CD2	1:A:498:ALA:HA	2.40	0.56
1:A:242:HIS:HD2	1:A:498:ALA:HA	1.70	0.56
1:C:372:TYR:CD1	1:C:520:HIS:HB3	2.39	0.56
1:C:350:PHE:CD2	1:C:362:GLU:HB2	2.41	0.56
1:C:125:LEU:HD22	1:C:159:ARG:NH1	2.20	0.56
1:A:231:TYR:CE1	1:A:293:ASP:HA	2.40	0.56
1:C:112:HIS:ND1	1:C:117:SER:O	2.35	0.56
1:B:147:PRO:O	1:B:149:PRO:HD3	2.06	0.56
1:C:240:LEU:O	1:C:515:THR:HG21	2.04	0.56
1:D:590:ALA:HA	1:D:602:GLY:HA2	1.87	0.56

Continued on next page...

Continued from previous page...

Atom-1	Atom-2	Interatomic distance (Å)	Clash overlap (Å)
1:D:632:LEU:HD12	1:D:633:ALA:N	2.20	0.56
1:C:267:GLN:HG2	1:C:499:PHE:CE1	2.41	0.56
1:A:375:ASN:HA	1:B:561:ARG:HH21	1.71	0.56
1:D:439:PRO:HA	1:D:456:ALA:HA	1.88	0.56
1:C:86:ALA:HA	1:C:89:ALA:HB2	1.88	0.56
1:A:201:TYR:HH	1:A:203:HIS:HD1	1.52	0.56
1:D:184:PHE:CD2	1:D:206:ARG:HD2	2.40	0.56
1:D:478:VAL:HB	1:D:486:GLU:HB3	1.86	0.56
1:B:614:PRO:HG3	1:B:629:ARG:HA	1.88	0.56
1:C:247:LEU:HD23	1:C:264:VAL:HG23	1.87	0.56
1:D:455:LEU:HD13	1:D:722:SER:HA	1.86	0.56
1:D:159:ARG:HD3	12:D:2001:HOH:O	2.06	0.56
1:A:226:TRP:CD1	1:A:248:LEU:HD13	2.41	0.56
1:B:163:PRO:O	1:B:165:PRO:HD3	2.07	0.56
1:A:185:ASN:O	1:A:186:ARG:HG3	2.05	0.56
10:C:1732:NAG:H5	10:C:1733:NAG:H82	1.88	0.55
1:A:198:CYS:SG	1:A:199:CYS:N	2.79	0.55
1:C:372:TYR:HE1	12:C:2009:HOH:O	1.89	0.55
1:A:63:LEU:HD11	1:A:124:ALA:HB2	1.88	0.55
1:D:440:LEU:HB2	1:D:457:GLU:HB2	1.88	0.55
1:C:632:LEU:HD13	1:C:678:VAL:HG22	1.88	0.55
1:D:632:LEU:HD12	1:D:633:ALA:H	1.71	0.55
1:B:554:SER:N	1:B:555:PRO:HD3	2.21	0.55
1:B:474:VAL:O	1:B:489:PHE:HA	2.07	0.55
1:D:554:SER:N	1:D:555:PRO:HD3	2.20	0.55
1:C:317:TYR:N	1:C:317:TYR:CD1	2.73	0.55
1:B:508:GLY:HA3	1:B:517:GLY:O	2.05	0.55
1:D:58:GLN:OE1	1:D:328:SER:HB2	2.06	0.55
1:C:344:PHE:HB3	1:C:387:GLY:O	2.06	0.55
1:D:198:CYS:HA	1:D:290:LEU:HD23	1.89	0.55
1:D:152:MET:CE	8:D:1731:NAG:H81	2.36	0.55
1:B:223:ARG:HH11	1:B:223:ARG:HG2	1.71	0.55
1:C:157:VAL:HG23	1:C:158:GLU:N	2.22	0.55
1:A:139:SER:HB3	1:A:154:ASP:OD1	2.07	0.55
1:C:315:GLN:CG	1:D:315:GLN:HE21	2.16	0.55
1:D:91:PRO:HB2	1:D:254:LEU:O	2.06	0.55
1:D:316:PHE:HE1	1:D:318:PRO:HA	1.71	0.55
1:A:499:PHE:CE2	1:A:514:HIS:HB3	2.41	0.55
1:B:468:LEU:HD12	1:B:473:TYR:HE1	1.71	0.55
1:C:140:GLU:OE1	1:C:160:HIS:CD2	2.60	0.55
1:B:210:THR:HG22	1:B:229:LEU:HD22	1.89	0.55

Continued on next page...

Continued from previous page...

Atom-1	Atom-2	Interatomic distance (Å)	Clash overlap (Å)
1:B:67:GLU:HG2	1:B:146:LEU:HD22	1.87	0.55
1:A:306:VAL:HG21	1:B:718:TYR:O	2.06	0.55
1:B:247:LEU:HD22	1:B:264:VAL:HG22	1.89	0.55
1:B:216:ARG:HB2	1:B:223:ARG:HA	1.87	0.55
1:D:141:LEU:CD2	1:D:154:ASP:HA	2.37	0.55
1:C:71:VAL:HG13	1:C:143:VAL:HG11	1.89	0.55
1:C:334:LEU:HD22	1:C:354:PHE:CZ	2.42	0.54
1:C:133:GLN:HB2	1:C:134:PRO:HD2	1.89	0.54
1:A:612:GLY:HA2	1:B:585:ARG:NE	2.22	0.54
1:A:98:SER:HB3	1:A:417:LEU:HD23	1.88	0.54
1:C:584:PRO:HG2	1:C:587:LEU:HB2	1.89	0.54
1:A:71:VAL:HG13	1:A:143:VAL:HG11	1.89	0.54
1:C:88:GLN:O	1:C:174:GLN:HG2	2.07	0.54
1:A:267:GLN:HG2	1:A:499:PHE:CE1	2.42	0.54
1:C:223:ARG:HB3	1:C:252:LYS:HA	1.88	0.54
1:A:709:ASN:N	1:B:689:GLU:OE1	2.35	0.54
1:C:184:PHE:O	1:C:189:PRO:HD3	2.07	0.54
1:A:640:GLU:C	1:A:642:PRO:HD3	2.27	0.54
1:D:138:VAL:HG23	1:D:164:LEU:CB	2.37	0.54
1:D:129:PHE:CE1	1:D:169:ARG:HG3	2.42	0.54
1:C:517:GLY:HA3	1:C:686:PRO:HB2	1.88	0.54
1:C:220:SER:HA	1:C:654:TRP:CE3	2.42	0.54
1:C:442:ARG:HG3	1:D:403:ASP:OD1	2.07	0.54
1:A:317:TYR:HD2	1:A:321:PRO:HA	1.73	0.54
1:D:469:LEU:HD12	1:D:471:PAQ:C3	2.38	0.54
9:B:1732:NDG:H6C1	9:B:1733:NAG:C1	2.37	0.54
1:C:85:ASP:CG	1:C:420:GLN:HG3	2.28	0.54
1:A:372:TYR:CD1	1:A:520:HIS:HB3	2.43	0.54
1:C:726:ARG:HH22	1:D:234:SER:HB2	1.73	0.54
1:C:544:MET:CE	1:D:613:GLU:H	2.21	0.54
1:D:614:PRO:CG	1:D:629:ARG:HG2	2.37	0.54
1:C:322:ARG:NH1	1:D:310:PRO:O	2.40	0.54
1:B:628:GLU:HG2	1:B:628:GLU:O	2.08	0.54
1:D:91:PRO:CB	1:D:254:LEU:HA	2.38	0.54
1:B:548:PRO:HG3	1:B:560:GLN:NE2	2.17	0.54
1:A:76:THR:HG22	1:A:83:LEU:CD2	2.37	0.54
1:C:188:LEU:N	1:C:189:PRO:HD2	2.23	0.54
1:B:388:GLY:HA3	1:B:650:GLN:HB2	1.90	0.54
1:C:500:LEU:HD12	1:C:516:LEU:HB2	1.89	0.54
1:A:280:GLN:HE21	1:A:285:LEU:HD23	1.72	0.54
1:D:229:LEU:HD12	1:D:245:LEU:HD23	1.89	0.54

Continued on next page...

Continued from previous page...

Atom-1	Atom-2	Interatomic distance (Å)	Clash overlap (Å)
1:C:67:GLU:HB3	1:C:146:LEU:CD2	2.38	0.54
1:C:445:SER:O	1:C:450:HIS:HA	2.07	0.54
1:A:209:VAL:HB	1:B:448:TYR:CE1	2.42	0.54
1:D:229:LEU:O	1:D:243:VAL:HG22	2.06	0.54
1:B:344:PHE:HA	1:B:390:GLY:CA	2.38	0.54
1:A:535:LEU:O	1:A:673:ASP:HA	2.08	0.54
1:A:249:VAL:O	1:A:251:HIS:HD2	1.91	0.54
1:A:160:HIS:CE1	1:A:657:THR:HG22	2.43	0.54
1:C:159:ARG:HG2	1:C:160:HIS:CD2	2.43	0.54
1:A:628:GLU:O	1:A:628:GLU:HG2	2.06	0.54
1:A:188:LEU:N	1:A:189:PRO:HD2	2.23	0.53
1:B:381:THR:HG22	1:B:381:THR:O	2.08	0.53
1:D:517:GLY:HA3	1:D:686:PRO:HB2	1.90	0.53
1:C:616:PRO:HD3	1:D:546:PHE:CD1	2.44	0.53
1:C:441:ARG:HG2	1:C:441:ARG:HH11	1.74	0.53
1:D:90:ARG:HH12	1:D:178:ASP:CG	2.12	0.53
1:A:637:ARG:O	1:A:637:ARG:HG3	2.08	0.53
1:D:329:ARG:HH21	1:D:336:THR:HB	1.73	0.53
1:C:86:ALA:HA	1:C:89:ALA:CB	2.37	0.53
1:D:614:PRO:HG3	1:D:629:ARG:HA	1.90	0.53
1:B:312:PRO:O	1:B:313:PRO:C	2.47	0.53
1:A:601:ARG:NH1	1:A:710:PHE:O	2.41	0.53
1:C:536:GLU:CD	1:C:536:GLU:H	2.12	0.53
1:C:198:CYS:SG	1:C:199:CYS:N	2.81	0.53
1:C:74:PHE:CZ	1:C:78:ARG:HG3	2.43	0.53
1:C:548:PRO:HA	1:C:559:LEU:O	2.07	0.53
1:C:549:MET:O	1:C:559:LEU:HB3	2.09	0.53
1:D:167:HIS:CD2	1:D:221:GLY:HA2	2.44	0.53
1:A:539:VAL:CG1	1:A:569:LEU:HD12	2.38	0.53
1:C:576:ALA:HA	1:C:633:ALA:HA	1.91	0.53
1:D:125:LEU:HD11	1:D:140:GLU:HB3	1.90	0.53
1:A:322:ARG:NH1	1:B:310:PRO:O	2.42	0.53
1:A:630:TYR:O	1:A:679:THR:HB	2.09	0.53
1:A:329:ARG:HH21	1:A:336:THR:CG2	2.19	0.53
1:C:573:GLU:HG2	1:C:666:ASN:HD22	1.73	0.53
1:B:642:PRO:HB3	12:B:2017:HOH:O	2.09	0.53
1:B:382:THR:HG21	1:B:384:TYR:CE2	2.43	0.53
1:A:85:ASP:OD2	1:A:420:GLN:HG3	2.08	0.53
1:A:169:ARG:HG2	1:A:169:ARG:NH1	2.24	0.53
1:C:311:ALA:HB3	1:D:318:PRO:HG2	1.90	0.53
1:C:96:VAL:HG22	1:C:128:VAL:HG22	1.91	0.53

Continued on next page...

Continued from previous page...

Atom-1	Atom-2	Interatomic distance (Å)	Clash overlap (Å)
1:B:212:THR:OG1	1:B:216:ARG:NH1	2.41	0.53
1:D:388:GLY:HA3	1:D:650:GLN:HB2	1.89	0.53
1:D:388:GLY:HA3	1:D:650:GLN:CB	2.38	0.53
1:C:722:SER:HB3	1:D:304:SER:CB	2.39	0.53
1:C:139:SER:HB3	1:C:154:ASP:OD1	2.08	0.53
1:A:232:ASN:CB	4:A:1734:NAG:H83	2.39	0.53
1:D:133:GLN:HB2	1:D:134:PRO:HD2	1.91	0.53
1:D:553:TRP:O	1:D:554:SER:HB2	2.09	0.53
1:B:500:LEU:HB3	1:B:514:HIS:HA	1.92	0.53
1:D:184:PHE:CD1	1:D:206:ARG:NH1	2.77	0.52
1:C:395:THR:HA	1:C:466:SER:HA	1.92	0.52
1:A:141:LEU:HD23	1:A:154:ASP:HA	1.91	0.52
1:C:163:PRO:O	1:C:165:PRO:HD3	2.08	0.52
1:C:540:TRP:CZ3	1:C:568:LEU:HB2	2.44	0.52
1:A:183:ILE:HD12	1:A:210:THR:HG21	1.91	0.52
1:A:352:VAL:O	1:A:358:ARG:HA	2.09	0.52
1:C:157:VAL:HG23	1:C:158:GLU:H	1.73	0.52
1:A:386:ASP:HB3	1:A:468:LEU:HD13	1.91	0.52
1:A:386:ASP:HB3	1:A:468:LEU:CD1	2.40	0.52
1:B:540:TRP:O	1:B:587:LEU:HD12	2.09	0.52
1:A:160:HIS:ND1	1:A:657:THR:HG22	2.23	0.52
1:B:195:LEU:HB3	1:B:201:TYR:CB	2.34	0.52
1:C:411:VAL:HG12	1:C:412:ASP:N	2.24	0.52
1:A:329:ARG:NH2	1:A:336:THR:HG23	2.19	0.52
1:C:61:ALA:O	1:C:122:ARG:NH2	2.43	0.52
1:A:539:VAL:HB	1:A:569:LEU:HB2	1.91	0.52
1:A:170:PRO:HA	1:A:651:ASN:ND2	2.24	0.52
1:C:342:GLY:O	1:C:392:GLY:HA3	2.10	0.52
1:B:547:VAL:HG21	1:B:563:GLN:OE1	2.09	0.52
1:D:367:GLU:HG3	1:D:368:ALA:H	1.73	0.52
1:C:362:GLU:HG2	1:C:363:ILE:N	2.25	0.52
1:A:540:TRP:HB2	1:A:588:TYR:CZ	2.45	0.52
1:C:230:TYR:HB3	1:C:241:HIS:O	2.10	0.52
1:A:366:GLN:OE1	1:A:643:SER:HA	2.10	0.52
1:A:84:VAL:HG12	1:A:85:ASP:N	2.24	0.52
1:B:228:GLY:O	1:B:229:LEU:HD23	2.09	0.52
1:D:138:VAL:HG23	1:D:164:LEU:HB2	1.92	0.52
1:D:224:ALA:HA	1:D:249:VAL:O	2.10	0.52
1:A:610:PHE:CD1	1:A:610:PHE:N	2.77	0.52
1:A:217:GLY:HA3	1:A:222:ASP:CB	2.39	0.52
1:A:195:LEU:CB	1:A:201:TYR:HB3	2.40	0.52

Continued on next page...

Continued from previous page...

Atom-1	Atom-2	Interatomic distance (Å)	Clash overlap (Å)
1:C:468:LEU:HD12	1:C:473:TYR:CE1	2.44	0.52
1:C:153:ARG:HH11	1:C:153:ARG:HB3	1.74	0.52
1:C:171:VAL:HG23	1:C:176:TYR:OH	2.10	0.52
1:C:441:ARG:NH1	1:C:716:SER:OG	2.43	0.52
1:C:647:VAL:HG13	1:C:648:PHE:CD1	2.45	0.52
1:C:138:VAL:HG21	1:C:648:PHE:HE2	1.74	0.52
1:D:500:LEU:HB3	1:D:514:HIS:HA	1.92	0.52
1:D:167:HIS:NE2	1:D:221:GLY:HA2	2.24	0.52
1:D:488:ARG:NH1	1:D:608:LEU:HD13	2.25	0.52
1:A:189:PRO:HA	1:A:203:HIS:CE1	2.44	0.52
1:D:595:ASN:O	1:D:598:GLY:N	2.42	0.52
1:D:347:PRO:HG2	1:D:475:TRP:CG	2.45	0.52
1:B:145:PRO:HD3	1:B:151:TYR:CE2	2.45	0.52
1:B:91:PRO:HB2	1:B:254:LEU:O	2.10	0.52
1:C:630:TYR:O	1:C:679:THR:HB	2.10	0.52
1:A:350:PHE:CE2	1:A:362:GLU:HB2	2.45	0.51
1:B:412:ASP:OD1	1:B:426:ARG:HA	2.10	0.51
1:C:379:ALA:O	1:C:381:THR:N	2.43	0.51
1:A:90:ARG:NH2	1:A:256:PRO:HD2	2.25	0.51
1:A:319:GLN:HE21	1:B:311:ALA:HB2	1.74	0.51
1:D:140:GLU:O	1:D:155:VAL:HG22	2.11	0.51
1:A:525:HIS:NE2	1:A:677:TRP:HB3	2.25	0.51
1:D:628:GLU:HG2	1:D:628:GLU:O	2.10	0.51
1:A:225:THR:O	1:A:248:LEU:HD12	2.11	0.51
1:C:322:ARG:NH2	1:D:312:PRO:HB3	2.26	0.51
1:A:74:PHE:CZ	1:A:78:ARG:HG3	2.45	0.51
1:C:309:GLY:O	1:C:310:PRO:C	2.48	0.51
1:A:309:GLY:O	1:A:310:PRO:C	2.47	0.51
1:B:525:HIS:NE2	1:B:677:TRP:HB3	2.25	0.51
1:A:454:GLY:HA3	1:B:402:VAL:HG11	1.93	0.51
1:C:329:ARG:NH2	1:C:336:THR:HG23	2.22	0.51
1:A:398:LEU:HD22	1:A:403:ASP:HB3	1.93	0.51
1:B:553:TRP:O	1:B:554:SER:HB2	2.11	0.51
1:C:500:LEU:O	1:C:501:PHE:HB3	2.09	0.51
1:C:689:GLU:O	1:D:714:ASP:HB2	2.09	0.51
1:B:167:HIS:CD2	1:B:221:GLY:HA2	2.45	0.51
1:B:431:VAL:HG22	1:B:462:VAL:HG22	1.91	0.51
1:A:315:GLN:O	1:A:316:PHE:HB3	2.10	0.51
1:A:315:GLN:CG	1:B:315:GLN:HE21	2.20	0.51
1:B:636:GLN:HE21	1:B:667:GLU:HB3	1.73	0.51
1:C:138:VAL:HG13	1:C:164:LEU:HB3	1.92	0.51

Continued on next page...

Continued from previous page...

Atom-1	Atom-2	Interatomic distance (Å)	Clash overlap (Å)
1:B:168:ARG:HG2	1:B:652:ASP:CB	2.41	0.51
1:A:689:GLU:O	1:B:714:ASP:HB2	2.11	0.51
1:B:360:VAL:HG22	1:B:530:LEU:CD2	2.41	0.51
1:D:212:THR:OG1	1:D:216:ARG:NH1	2.44	0.51
1:D:413:TRP:HE3	1:D:425:ILE:HD12	1.76	0.51
1:C:442:ARG:O	1:C:442:ARG:HD3	2.11	0.51
1:C:75:LEU:O	1:C:79:LEU:HB2	2.10	0.51
1:C:198:CYS:CB	1:C:288:VAL:HG11	2.38	0.51
2:C:1730:NAG:H61	2:C:1731:NAG:C8	2.41	0.51
1:C:375:ASN:HD22	1:C:375:ASN:C	2.13	0.51
1:D:142:VAL:HG23	1:D:155:VAL:HG11	1.92	0.51
1:A:214:ALA:HB1	1:A:650:GLN:NE2	2.25	0.51
1:C:579:VAL:HA	1:C:631:GLN:HG3	1.93	0.51
1:C:628:GLU:O	1:C:628:GLU:HG2	2.10	0.51
1:B:285:LEU:HG	1:B:285:LEU:O	2.11	0.51
1:C:329:ARG:NH2	1:C:336:THR:CG2	2.75	0.50
1:A:632:LEU:HD12	1:A:633:ALA:H	1.76	0.50
1:A:678:VAL:HG11	1:A:703:PHE:CD2	2.45	0.50
1:A:549:MET:O	1:A:559:LEU:HB3	2.09	0.50
1:A:91:PRO:HB2	1:A:254:LEU:O	2.10	0.50
1:C:539:VAL:HG11	1:C:569:LEU:HD12	1.94	0.50
1:D:183:ILE:HA	1:D:187:GLU:HB2	1.93	0.50
1:C:225:THR:HG22	1:C:226:TRP:N	2.26	0.50
1:B:138:VAL:HG11	1:B:169:ARG:HB3	1.92	0.50
10:C:1732:NAG:H62	10:C:1734:FUL:O2	2.11	0.50
1:A:334:LEU:HD22	1:A:354:PHE:CZ	2.46	0.50
1:D:367:GLU:HG3	1:D:368:ALA:N	2.26	0.50
1:D:572:GLU:HA	1:D:669:ILE:HD13	1.93	0.50
1:C:82:GLY:O	1:C:94:ASN:HB2	2.11	0.50
1:B:360:VAL:HG21	1:B:363:ILE:HD11	1.93	0.50
1:D:94:ASN:CG	1:D:132:ARG:HB3	2.30	0.50
1:A:157:VAL:HA	1:A:162:GLY:H	1.73	0.50
1:C:386:ASP:OD1	1:C:471:PAQ:N3	2.44	0.50
1:D:588:TYR:CB	1:D:604:ARG:HA	2.42	0.50
1:C:322:ARG:HH11	1:C:322:ARG:HG2	1.77	0.50
1:B:588:TYR:CB	1:B:604:ARG:HA	2.41	0.50
1:D:441:ARG:NH1	1:D:441:ARG:HG2	2.26	0.50
1:D:90:ARG:NH1	1:D:178:ASP:OD2	2.44	0.50
1:D:125:LEU:HD22	1:D:159:ARG:HH12	1.76	0.50
1:C:314:LEU:HD22	1:D:318:PRO:HD3	1.94	0.50
1:C:337:PHE:HA	1:C:351:ASP:O	2.11	0.50

Continued on next page...

Continued from previous page...

Atom-1	Atom-2	Interatomic distance (Å)	Clash overlap (Å)
1:B:542:GLU:HA	1:B:565:THR:O	2.12	0.50
1:B:133:GLN:HB2	1:B:134:PRO:HD2	1.92	0.50
1:B:561:ARG:HH11	1:B:561:ARG:HG2	1.77	0.50
1:C:58:GLN:NE2	1:C:326:GLN:O	2.44	0.50
1:A:317:TYR:HD1	1:A:317:TYR:N	2.08	0.50
1:D:471:PAQ:OH	1:D:471:PAQ:N2	2.45	0.50
1:A:223:ARG:HB3	1:A:252:LYS:HA	1.93	0.50
1:B:184:PHE:CD1	1:B:206:ARG:NH1	2.80	0.50
1:C:538:TRP:O	1:C:589:LEU:HA	2.12	0.50
1:A:341:LEU:HB2	1:A:429:PHE:HZ	1.75	0.50
1:C:375:ASN:HA	1:D:561:ARG:HH21	1.77	0.50
9:B:1732:NDG:H6C2	9:B:1734:FUL:O2	2.12	0.50
1:D:540:TRP:O	1:D:587:LEU:HD12	2.12	0.50
1:D:538:TRP:HZ3	1:D:592:ASN:HB2	1.76	0.50
1:C:369:LEU:HA	1:C:384:TYR:O	2.11	0.50
2:A:1730:NAG:O6	2:A:1731:NAG:H82	2.12	0.50
1:B:191:ALA:HA	1:B:278:GLU:HB2	1.92	0.50
1:A:184:PHE:CD2	1:A:206:ARG:HG3	2.46	0.49
1:B:173:PHE:CD2	1:B:173:PHE:C	2.85	0.49
1:A:317:TYR:HD1	1:A:317:TYR:H	1.58	0.49
1:A:474:VAL:O	1:A:489:PHE:HA	2.12	0.49
1:D:561:ARG:HH11	1:D:561:ARG:HG2	1.76	0.49
1:A:624:GLY:HA2	1:A:656:PRO:HG3	1.92	0.49
1:B:697:VAL:O	1:B:697:VAL:HG23	2.12	0.49
1:A:316:PHE:O	1:A:318:PRO:HD3	2.11	0.49
1:D:370:ALA:HA	1:D:521:THR:O	2.12	0.49
1:D:341:LEU:HD23	1:D:413:TRP:CD2	2.47	0.49
1:B:141:LEU:CD2	1:B:154:ASP:HA	2.42	0.49
1:A:370:ALA:HA	1:A:521:THR:O	2.13	0.49
1:D:445:SER:O	1:D:450:HIS:HA	2.12	0.49
1:A:113:LEU:HD21	1:A:351:ASP:OD1	2.12	0.49
1:A:386:ASP:CG	1:A:468:LEU:HD13	2.32	0.49
1:A:646:SER:HB2	1:A:658:VAL:HG23	1.93	0.49
1:A:353:ARG:HA	1:A:357:GLU:O	2.12	0.49
1:A:342:GLY:O	1:A:392:GLY:HA3	2.12	0.49
1:A:411:VAL:O	1:A:428:ALA:N	2.42	0.49
1:A:315:GLN:OE1	1:A:435:ASN:HB3	2.12	0.49
1:A:546:PHE:CE2	1:B:615:LEU:HD23	2.47	0.49
1:C:155:VAL:O	1:C:159:ARG:N	2.41	0.49
1:C:169:ARG:HG2	1:C:169:ARG:NH1	2.27	0.49
1:C:373:GLY:HA3	1:D:562:LEU:HB3	1.94	0.49

Continued on next page...

Continued from previous page...

Atom-1	Atom-2	Interatomic distance (Å)	Clash overlap (Å)
1:D:285:LEU:HG	1:D:285:LEU:O	2.11	0.49
1:C:191:ALA:HA	1:C:278:GLU:OE1	2.13	0.49
1:A:187:GLU:CB	1:A:274:LEU:HD12	2.34	0.49
1:B:184:PHE:CE2	1:B:206:ARG:HA	2.48	0.49
1:C:63:LEU:HD23	1:C:122:ARG:NH2	2.27	0.49
1:B:538:TRP:CH2	1:B:592:ASN:HB2	2.47	0.49
1:A:73:ARG:O	1:A:77:GLN:HG3	2.12	0.49
1:B:488:ARG:NH1	1:B:608:LEU:HD13	2.28	0.49
1:D:697:VAL:O	1:D:697:VAL:HG23	2.12	0.49
1:D:431:VAL:HG22	1:D:462:VAL:HG22	1.93	0.49
1:B:106:LYS:HG3	1:B:361:TYR:CE1	2.48	0.49
1:B:178:ASP:O	1:B:181:GLN:HB3	2.13	0.49
1:A:525:HIS:HB2	1:A:627:TRP:CE3	2.48	0.49
1:D:226:TRP:CD1	1:D:248:LEU:HD13	2.47	0.49
1:B:637:ARG:HG3	1:B:637:ARG:O	2.13	0.49
1:C:317:TYR:HB3	1:C:320:GLY:O	2.13	0.49
1:C:536:GLU:N	1:C:536:GLU:CD	2.66	0.49
1:B:191:ALA:HA	1:B:278:GLU:CG	2.43	0.49
1:D:513:GLU:H	1:D:513:GLU:CD	2.15	0.49
1:C:90:ARG:NH2	1:C:256:PRO:HD2	2.28	0.49
1:A:84:VAL:HG12	1:A:85:ASP:H	1.77	0.49
1:A:106:LYS:HE2	1:A:110:LEU:HD11	1.94	0.49
1:C:442:ARG:C	1:C:442:ARG:HD3	2.33	0.49
1:A:490:TYR:CE2	1:A:700:GLY:HA3	2.48	0.49
1:D:78:ARG:HH11	1:D:78:ARG:HG2	1.78	0.49
1:D:83:LEU:HD12	1:D:94:ASN:O	2.13	0.48
1:C:157:VAL:O	1:C:161:GLY:CA	2.56	0.48
1:B:689:GLU:CD	1:B:689:GLU:H	2.15	0.48
1:A:314:LEU:HD22	1:B:318:PRO:HD3	1.95	0.48
1:A:369:LEU:HD12	1:A:384:TYR:O	2.12	0.48
1:A:100:GLU:HG2	1:A:101:LEU:H	1.77	0.48
1:B:626:SER:HB2	1:B:661:SER:OG	2.13	0.48
1:A:85:ASP:CG	1:A:420:GLN:HG3	2.34	0.48
1:A:58:GLN:NE2	1:A:326:GLN:O	2.46	0.48
1:C:160:HIS:CE1	1:C:657:THR:HG22	2.48	0.48
1:C:403:ASP:OD1	1:D:442:ARG:HG3	2.12	0.48
1:A:573:GLU:HG3	1:A:666:ASN:HD21	1.76	0.48
1:B:388:GLY:HA3	1:B:650:GLN:CB	2.43	0.48
1:A:314:LEU:N	1:A:314:LEU:HD23	2.28	0.48
1:A:578:LEU:HD23	1:A:630:TYR:CE2	2.47	0.48
1:D:143:VAL:HG12	1:D:144:GLY:N	2.28	0.48

Continued on next page...

Continued from previous page...

Atom-1	Atom-2	Interatomic distance (Å)	Clash overlap (Å)
1:C:315:GLN:HE22	1:C:434:GLN:HA	1.78	0.48
1:C:106:LYS:HE3	1:C:361:TYR:CG	2.48	0.48
1:C:398:LEU:HD22	1:C:403:ASP:HB3	1.94	0.48
1:A:579:VAL:HA	1:A:631:GLN:CG	2.43	0.48
1:B:554:SER:H	1:B:555:PRO:HD3	1.78	0.48
1:A:195:LEU:HB2	1:A:201:TYR:CD2	2.48	0.48
1:C:612:GLY:HA2	1:D:585:ARG:HE	1.78	0.48
1:C:184:PHE:CD2	1:C:188:LEU:HD12	2.48	0.48
1:C:709:ASN:N	1:D:689:GLU:OE1	2.41	0.48
1:D:495:ILE:HG12	12:D:2008:HOH:O	2.14	0.48
1:C:272:ASP:HB2	1:C:276:GLN:NE2	2.28	0.48
1:C:251:HIS:HA	1:C:259:TRP:CD1	2.49	0.48
1:A:360:VAL:HG11	1:A:363:ILE:HG13	1.95	0.48
1:A:471:PAQ:OH	1:A:471:PAQ:N2	2.47	0.48
1:D:595:ASN:O	1:D:597:TRP:N	2.47	0.48
1:C:646:SER:HB2	1:C:658:VAL:CG2	2.43	0.48
1:A:341:LEU:HB2	1:A:429:PHE:CZ	2.48	0.48
1:B:157:VAL:HG13	8:B:1730:NAG:C8	2.43	0.48
1:C:619:SER:HB2	1:D:560:GLN:CG	2.44	0.48
1:C:336:THR:HG21	1:C:353:ARG:HD2	1.95	0.48
1:D:371:ILE:HD13	1:D:615:LEU:HG	1.95	0.48
1:A:245:LEU:HB2	1:A:266:TYR:HD1	1.78	0.48
1:B:513:GLU:H	1:B:513:GLU:CD	2.17	0.48
1:C:160:HIS:ND1	1:C:657:THR:HG22	2.28	0.48
1:B:533:ALA:HB3	1:B:591:SER:HB2	1.96	0.48
1:B:440:LEU:HD23	1:B:455:LEU:HD23	1.95	0.48
1:B:183:ILE:HA	1:B:187:GLU:HB2	1.96	0.48
1:D:369:LEU:CD1	1:D:371:ILE:HG13	2.40	0.48
1:A:347:PRO:HG2	1:A:475:TRP:CG	2.48	0.48
1:D:637:ARG:HB2	1:D:675:VAL:HB	1.96	0.48
1:C:398:LEU:HG	12:C:2003:HOH:O	2.14	0.48
1:D:200:PHE:O	1:D:202:LYS:HG3	2.14	0.48
1:C:174:GLN:O	1:C:177:LEU:N	2.46	0.48
1:D:298:GLY:O	1:D:692:PRO:HB3	2.14	0.48
1:C:145:PRO:HD3	1:C:151:TYR:CE2	2.49	0.48
1:A:546:PHE:CZ	1:B:615:LEU:HD23	2.49	0.48
1:B:371:ILE:HG23	1:B:383:ARG:NH1	2.29	0.48
1:D:117:SER:HB3	1:D:118:PRO:HD2	1.96	0.48
1:D:577:PHE:CD2	1:D:583:THR:HG22	2.49	0.48
1:B:473:TYR:HB3	1:B:475:TRP:CZ2	2.49	0.47
1:D:595:ASN:HB3	1:D:601:ARG:HG2	1.94	0.47

Continued on next page...

Continued from previous page...

Atom-1	Atom-2	Interatomic distance (Å)	Clash overlap (Å)
1:D:166:TYR:O	1:D:169:ARG:HB3	2.14	0.47
1:D:554:SER:H	1:D:555:PRO:HD3	1.79	0.47
1:A:344:PHE:HB3	1:A:387:GLY:O	2.14	0.47
1:D:395:THR:O	1:D:425:ILE:HD13	2.14	0.47
1:D:67:GLU:O	1:D:71:VAL:HG23	2.13	0.47
1:B:546:PHE:CE2	1:B:562:LEU:HD13	2.49	0.47
1:A:442:ARG:HG3	1:B:403:ASP:OD1	2.15	0.47
1:D:216:ARG:HB2	1:D:223:ARG:HA	1.96	0.47
1:B:134:PRO:C	1:B:136:PRO:HD3	2.35	0.47
1:B:132:ARG:O	1:B:132:ARG:HG3	2.14	0.47
1:B:540:TRP:HB2	1:B:588:TYR:CZ	2.49	0.47
1:C:306:VAL:HG23	1:C:306:VAL:O	2.14	0.47
1:D:142:VAL:HG23	1:D:155:VAL:CG1	2.43	0.47
1:C:88:GLN:O	1:C:89:ALA:C	2.51	0.47
1:B:138:VAL:HG23	1:B:164:LEU:CB	2.44	0.47
1:B:488:ARG:NH1	1:B:608:LEU:CD1	2.77	0.47
1:B:666:ASN:ND2	4:B:1738:NAG:H82	2.29	0.47
1:A:88:GLN:O	1:A:89:ALA:C	2.52	0.47
1:A:182:MET:CE	1:A:260:THR:HA	2.44	0.47
1:D:614:PRO:CB	1:D:629:ARG:HG2	2.45	0.47
1:B:278:GLU:O	1:B:282:GLU:HG2	2.14	0.47
1:C:58:GLN:OE1	1:C:61:ALA:HB2	2.14	0.47
1:D:640:GLU:CD	1:D:640:GLU:H	2.18	0.47
1:D:490:TYR:CD1	1:D:490:TYR:N	2.82	0.47
1:C:564:VAL:HG22	1:D:506:LYS:HA	1.96	0.47
1:C:199:CYS:C	1:C:201:TYR:H	2.18	0.47
1:D:170:PRO:HA	1:D:651:ASN:HD22	1.78	0.47
1:A:466:SER:O	1:A:472:ASP:HA	2.14	0.47
1:B:142:VAL:CG2	1:B:155:VAL:HG11	2.44	0.47
1:D:535:LEU:HD22	1:D:673:ASP:OD2	2.14	0.47
1:C:570:GLU:O	1:C:668:THR:HA	2.15	0.47
1:A:199:CYS:O	1:A:201:TYR:N	2.47	0.47
1:B:94:ASN:CG	1:B:132:ARG:HB3	2.35	0.47
1:A:106:LYS:HB2	1:A:637:ARG:HH12	1.78	0.47
1:B:188:LEU:N	1:B:189:PRO:CD	2.78	0.47
1:A:636:GLN:HE21	1:A:667:GLU:HB3	1.77	0.47
1:D:468:LEU:HD12	1:D:473:TYR:HE1	1.78	0.47
1:D:585:ARG:HG3	1:D:585:ARG:HH11	1.79	0.47
1:B:601:ARG:HB3	1:B:710:PHE:HA	1.96	0.47
1:D:78:ARG:HG2	1:D:78:ARG:NH1	2.29	0.47
1:D:523:SER:O	1:D:627:TRP:HH2	1.98	0.47

Continued on next page...

Continued from previous page...

Atom-1	Atom-2	Interatomic distance (Å)	Clash overlap (Å)
1:B:317:TYR:HE1	1:B:433:GLU:HB2	1.79	0.47
1:A:112:HIS:ND1	1:A:117:SER:O	2.42	0.47
1:C:195:LEU:CB	1:C:201:TYR:HB3	2.44	0.47
1:A:539:VAL:HG12	1:A:569:LEU:HD12	1.95	0.47
1:C:490:TYR:CE2	1:C:700:GLY:HA3	2.49	0.47
1:D:91:PRO:HB3	1:D:254:LEU:HA	1.96	0.47
1:A:376:SER:O	1:A:380:MET:HB2	2.15	0.47
1:C:220:SER:HA	1:C:654:TRP:HE3	1.79	0.47
1:C:317:TYR:HD1	1:C:317:TYR:N	2.12	0.47
1:D:173:PHE:CE2	1:D:177:LEU:HD11	2.50	0.47
1:D:191:ALA:HA	1:D:278:GLU:HB2	1.97	0.47
1:C:360:VAL:HA	1:C:530:LEU:HA	1.97	0.47
1:B:493:GLY:O	1:B:693:ASN:HA	2.14	0.47
1:A:157:VAL:O	1:A:161:GLY:N	2.48	0.47
1:C:101:LEU:HD12	1:C:123:GLU:O	2.15	0.47
1:D:466:SER:HB3	1:D:475:TRP:HE1	1.79	0.47
1:C:71:VAL:O	1:C:75:LEU:HG	2.14	0.47
1:D:441:ARG:NH2	1:D:722:SER:OG	2.46	0.47
1:C:632:LEU:HD12	1:C:677:TRP:O	2.14	0.47
1:A:63:LEU:HD23	1:A:122:ARG:NH2	2.31	0.47
1:D:312:PRO:O	1:D:313:PRO:C	2.53	0.47
1:B:341:LEU:HG	1:B:392:GLY:HA2	1.97	0.47
1:C:129:PHE:CE1	1:C:172:LEU:HD21	2.50	0.47
1:D:440:LEU:HD22	1:D:481:PRO:HG2	1.97	0.46
1:B:99:VAL:HG22	1:B:126:ALA:HB2	1.97	0.46
1:C:544:MET:HE1	1:D:613:GLU:H	1.79	0.46
1:C:490:TYR:CD2	1:C:696:THR:HB	2.50	0.46
10:C:1732:NAG:O4	10:C:1733:NAG:C7	2.62	0.46
1:A:138:VAL:HG21	1:A:648:PHE:HE2	1.80	0.46
1:A:213:THR:O	1:A:214:ALA:HB2	2.15	0.46
1:C:143:VAL:CG1	1:C:144:GLY:N	2.79	0.46
1:A:493:GLY:HA2	1:B:443:HIS:HB2	1.97	0.46
1:D:296:THR:CG2	1:D:297:GLY:N	2.78	0.46
1:B:200:PHE:HE1	1:B:293:ASP:OD1	1.98	0.46
1:A:217:GLY:HA3	1:A:222:ASP:HB2	1.96	0.46
1:B:714:ASP:CG	1:B:716:SER:HG	2.19	0.46
1:C:551:VAL:HG21	1:D:218:LEU:HD22	1.97	0.46
1:B:84:VAL:CG2	1:B:89:ALA:HB2	2.44	0.46
1:D:378:ALA:O	1:D:379:ALA:C	2.54	0.46
1:C:315:GLN:OE1	1:C:435:ASN:HB3	2.15	0.46
1:A:395:THR:O	1:A:395:THR:HG23	2.14	0.46

Continued on next page...

Continued from previous page...

Atom-1	Atom-2	Interatomic distance (Å)	Clash overlap (Å)
1:A:64:SER:O	1:A:65:ARG:C	2.53	0.46
1:D:168:ARG:HG2	1:D:652:ASP:CB	2.46	0.46
1:C:546:PHE:CZ	1:D:615:LEU:HD23	2.50	0.46
1:A:86:ALA:HA	1:A:89:ALA:CB	2.46	0.46
1:C:666:ASN:HD22	1:C:666:ASN:HA	1.53	0.46
1:D:200:PHE:HE1	1:D:293:ASP:OD1	1.98	0.46
1:D:278:GLU:HG3	1:D:282:GLU:OE1	2.16	0.46
1:A:247:LEU:CD2	1:A:264:VAL:HG23	2.45	0.46
1:C:525:HIS:NE2	1:C:677:TRP:HB3	2.29	0.46
1:D:156:THR:HG23	1:D:164:LEU:HG	1.97	0.46
1:D:328:SER:O	1:D:338:SER:HA	2.15	0.46
1:B:213:THR:HA	1:B:384:TYR:CE1	2.49	0.46
1:D:488:ARG:NH1	1:D:608:LEU:CD1	2.78	0.46
1:A:191:ALA:HA	1:A:278:GLU:HB2	1.97	0.46
1:B:94:ASN:OD1	1:B:130:PHE:HA	2.14	0.46
1:D:106:LYS:O	1:D:110:LEU:HG	2.14	0.46
1:C:217:GLY:HA3	1:C:222:ASP:HB2	1.98	0.46
1:D:191:ALA:HA	1:D:278:GLU:CG	2.45	0.46
1:A:240:LEU:O	1:A:515:THR:HG21	2.15	0.46
1:C:410:TYR:HD2	1:C:427:ASP:HB3	1.81	0.46
1:A:353:ARG:HH21	1:A:358:ARG:HH12	1.62	0.46
1:A:129:PHE:CE1	1:A:172:LEU:HD21	2.51	0.46
1:D:468:LEU:O	1:D:469:LEU:HB2	2.16	0.46
1:C:395:THR:HG23	1:C:395:THR:O	2.15	0.46
1:A:201:TYR:CE2	1:A:203:HIS:ND1	2.78	0.46
1:B:206:ARG:C	1:B:208:LEU:H	2.16	0.46
1:C:98:SER:CB	1:C:417:LEU:HD23	2.43	0.46
1:C:471:PAQ:OH	1:C:471:PAQ:N2	2.49	0.46
1:A:159:ARG:HG2	1:A:160:HIS:CD2	2.50	0.46
1:C:451:TYR:HB3	1:D:235:GLY:HA2	1.98	0.46
1:C:90:ARG:HH21	1:C:256:PRO:HD2	1.81	0.46
1:C:361:TYR:HB3	1:C:529:ASP:OD2	2.16	0.46
1:A:76:THR:HA	1:A:83:LEU:CD2	2.46	0.46
1:C:183:ILE:HD12	1:C:210:THR:HG21	1.97	0.46
1:A:220:SER:HA	1:A:654:TRP:CE3	2.51	0.46
1:A:231:TYR:CD1	1:A:293:ASP:HA	2.51	0.46
1:C:219:GLN:NE2	1:D:557:HIS:CE1	2.84	0.46
1:D:614:PRO:HB2	1:D:629:ARG:HG2	1.98	0.46
1:D:593:HIS:CE1	12:D:2006:HOH:O	2.68	0.46
1:A:477:THR:O	1:A:477:THR:HG23	2.15	0.46
1:C:187:GLU:CB	1:C:274:LEU:HD12	2.36	0.46

Continued on next page...

Continued from previous page...

Atom-1	Atom-2	Interatomic distance (Å)	Clash overlap (Å)
1:C:544:MET:CE	1:D:613:GLU:HB2	2.45	0.46
1:B:395:THR:HG22	1:B:395:THR:O	2.15	0.46
1:B:413:TRP:HE3	1:B:425:ILE:HD12	1.81	0.46
1:C:578:LEU:HD23	1:C:630:TYR:CE2	2.51	0.46
1:B:378:ALA:O	1:B:379:ALA:C	2.53	0.46
1:B:490:TYR:CD1	1:B:490:TYR:N	2.84	0.46
1:B:202:LYS:C	1:B:204:ARG:H	2.19	0.46
1:A:380:MET:HE3	1:B:559:LEU:HD21	1.98	0.45
1:A:386:ASP:CB	1:A:468:LEU:HD13	2.46	0.45
1:D:106:LYS:HG3	1:D:361:TYR:CE1	2.51	0.45
1:B:99:VAL:HG22	1:B:126:ALA:CB	2.46	0.45
1:A:499:PHE:HE2	1:A:514:HIS:HB3	1.81	0.45
1:B:375:ASN:ND2	1:B:501:PHE:CE1	2.84	0.45
1:A:500:LEU:O	1:A:501:PHE:HB3	2.17	0.45
1:A:551:VAL:HG21	1:B:218:LEU:HD22	1.97	0.45
1:C:63:LEU:HG	1:C:101:LEU:HB2	1.97	0.45
1:C:84:VAL:HG12	1:C:85:ASP:N	2.30	0.45
1:A:640:GLU:CD	1:A:640:GLU:N	2.70	0.45
1:A:597:TRP:CZ3	1:B:513:GLU:N	2.84	0.45
1:D:527:LYS:NZ	1:D:642:PRO:HA	2.31	0.45
1:D:366:GLN:OE1	1:D:643:SER:HA	2.16	0.45
1:D:247:LEU:HD22	1:D:264:VAL:HG22	1.98	0.45
1:A:199:CYS:C	1:A:201:TYR:N	2.69	0.45
1:D:636:GLN:NE2	1:D:668:THR:O	2.48	0.45
1:D:341:LEU:HB3	1:D:413:TRP:CE2	2.52	0.45
1:C:462:VAL:O	1:C:477:THR:HG22	2.17	0.45
1:C:646:SER:HB3	1:C:649:ASN:OD1	2.15	0.45
1:D:316:PHE:CE1	1:D:318:PRO:HA	2.50	0.45
1:B:250:ASN:ND2	1:B:262:GLN:OE1	2.50	0.45
1:D:561:ARG:NH1	1:D:561:ARG:HG2	2.31	0.45
2:A:1730:NAG:O4	2:A:1731:NAG:C7	2.63	0.45
1:C:170:PRO:HA	1:C:651:ASN:ND2	2.31	0.45
1:C:535:LEU:O	1:C:673:ASP:HA	2.17	0.45
1:D:646:SER:OG	1:D:648:PHE:HD1	2.00	0.45
1:C:722:SER:CB	1:D:304:SER:HB2	2.46	0.45
1:B:153:ARG:O	1:B:155:VAL:HG13	2.16	0.45
1:B:84:VAL:HG23	1:B:89:ALA:HB2	1.97	0.45
1:B:81:PRO:C	1:B:83:LEU:H	2.20	0.45
1:A:246:GLU:OE1	1:A:377:PRO:HD2	2.15	0.45
1:C:681:GLY:O	1:C:682:PHE:HB3	2.17	0.45
1:A:184:PHE:CD2	1:A:188:LEU:HD12	2.52	0.45

Continued on next page...

Continued from previous page...

Atom-1	Atom-2	Interatomic distance (Å)	Clash overlap (Å)
1:B:175:GLU:OE2	1:B:223:ARG:NH1	2.50	0.45
1:C:274:LEU:HA	1:C:274:LEU:HD23	1.70	0.45
1:B:471:PAQ:OH	1:B:471:PAQ:N2	2.48	0.45
1:D:389:PHE:HE1	1:D:650:GLN:NE2	2.11	0.45
1:A:410:TYR:HD2	1:A:427:ASP:HB3	1.81	0.45
1:A:230:TYR:HB3	1:A:241:HIS:O	2.16	0.45
1:A:317:TYR:HB3	1:A:320:GLY:O	2.17	0.45
1:B:67:GLU:CG	1:B:146:LEU:HD13	2.45	0.45
1:C:632:LEU:HA	1:C:677:TRP:O	2.17	0.45
1:A:63:LEU:HG	1:A:101:LEU:HB2	1.99	0.45
1:D:239:PHE:CD2	1:D:470:ASN:HB3	2.51	0.45
1:B:230:TYR:N	1:B:230:TYR:CD1	2.84	0.45
1:C:562:LEU:HB3	1:D:373:GLY:CA	2.46	0.45
1:D:188:LEU:N	1:D:189:PRO:CD	2.80	0.45
1:A:546:PHE:CE1	1:B:615:LEU:HA	2.52	0.45
1:B:561:ARG:HG2	1:B:561:ARG:NH1	2.31	0.45
1:A:202:LYS:O	1:A:204:ARG:N	2.50	0.45
1:C:386:ASP:CG	1:C:468:LEU:HD13	2.37	0.45
1:B:90:ARG:HH12	1:B:178:ASP:CG	2.20	0.45
1:C:251:HIS:HA	1:C:259:TRP:CG	2.51	0.45
1:D:540:TRP:HB2	1:D:588:TYR:CZ	2.52	0.45
1:C:214:ALA:CB	1:C:650:GLN:NE2	2.80	0.45
1:C:322:ARG:HG2	1:C:322:ARG:NH1	2.30	0.45
1:D:488:ARG:HH11	1:D:608:LEU:CD1	2.30	0.45
1:B:250:ASN:HB2	1:B:262:GLN:HG3	1.98	0.45
1:B:572:GLU:HA	1:B:669:ILE:HD13	1.99	0.45
1:D:238:PHE:C	1:D:238:PHE:CD1	2.90	0.45
1:B:640:GLU:CD	1:B:640:GLU:H	2.19	0.45
1:A:441:ARG:HH11	1:A:441:ARG:CG	2.20	0.45
1:C:305:PRO:HD2	1:D:718:TYR:HD2	1.81	0.45
1:B:276:GLN:O	1:B:279:ALA:HB3	2.16	0.45
1:B:554:SER:C	1:B:556:GLU:H	2.21	0.45
1:C:230:TYR:CD1	1:C:230:TYR:N	2.84	0.45
1:B:488:ARG:HH11	1:B:608:LEU:CD1	2.29	0.45
1:A:462:VAL:HB	1:A:477:THR:CG2	2.46	0.45
1:B:106:LYS:HG3	1:B:361:TYR:CZ	2.51	0.45
1:D:178:ASP:O	1:D:181:GLN:HB3	2.17	0.45
1:A:678:VAL:HG11	1:A:703:PHE:HD2	1.82	0.45
1:A:280:GLN:HG2	1:A:285:LEU:HB3	1.97	0.45
1:B:398:LEU:HD22	1:B:403:ASP:HB3	1.98	0.45
1:A:726:ARG:HH22	1:B:234:SER:HB2	1.82	0.45

Continued on next page...

Continued from previous page...

Atom-1	Atom-2	Interatomic distance (Å)	Clash overlap (Å)
1:C:540:TRP:HB2	1:C:588:TYR:CZ	2.52	0.44
1:A:484:ALA:HA	1:A:705:LEU:O	2.18	0.44
1:D:110:LEU:HD21	1:D:361:TYR:CD1	2.52	0.44
1:A:314:LEU:CD2	1:B:318:PRO:HD3	2.47	0.44
1:C:632:LEU:HD12	1:C:633:ALA:H	1.82	0.44
1:D:578:LEU:HD21	1:D:629:ARG:HH12	1.82	0.44
1:B:157:VAL:HG23	1:B:158:GLU:N	2.32	0.44
1:C:64:SER:O	1:C:65:ARG:C	2.55	0.44
1:D:163:PRO:O	1:D:165:PRO:HD3	2.17	0.44
1:D:134:PRO:C	1:D:136:PRO:HD3	2.35	0.44
1:A:182:MET:HE3	1:A:260:THR:HA	1.98	0.44
1:A:366:GLN:HB3	1:A:644:SER:OG	2.18	0.44
1:B:168:ARG:HG2	1:B:652:ASP:HB3	1.98	0.44
1:C:593:HIS:O	1:C:601:ARG:HG3	2.17	0.44
1:B:439:PRO:HA	1:B:456:ALA:HA	1.98	0.44
1:D:539:VAL:HB	1:D:569:LEU:HB2	1.98	0.44
1:C:217:GLY:HA3	1:C:222:ASP:HB3	1.97	0.44
1:C:231:TYR:CD1	1:C:293:ASP:HA	2.52	0.44
1:A:306:VAL:HG23	1:A:306:VAL:O	2.17	0.44
1:B:77:GLN:CB	1:B:78:ARG:NH1	2.80	0.44
1:C:159:ARG:HE	1:C:159:ARG:HB2	1.66	0.44
1:D:72:MET:O	1:D:76:THR:HG23	2.16	0.44
1:C:199:CYS:C	1:C:201:TYR:N	2.71	0.44
1:A:191:ALA:O	1:A:195:LEU:HG	2.17	0.44
1:A:335:TRP:CH2	1:A:485:ILE:HG12	2.52	0.44
1:A:375:ASN:HA	1:B:561:ARG:NH2	2.32	0.44
1:A:106:LYS:HE3	1:A:361:TYR:CG	2.53	0.44
1:C:466:SER:O	1:C:472:ASP:HA	2.17	0.44
1:C:317:TYR:HD1	1:C:317:TYR:H	1.65	0.44
1:D:125:LEU:CD2	1:D:159:ARG:HH12	2.29	0.44
1:A:632:LEU:HD13	1:A:678:VAL:HG22	2.00	0.44
1:B:641:GLU:N	1:B:642:PRO:CD	2.80	0.44
1:C:597:TRP:CZ3	1:D:513:GLU:N	2.85	0.44
1:D:374:GLY:HA3	1:D:379:ALA:HB3	1.99	0.44
1:A:438:LEU:HA	1:B:463:ARG:HH12	1.83	0.44
1:A:538:TRP:O	1:A:589:LEU:HA	2.18	0.44
1:A:702:GLY:O	1:A:703:PHE:HB3	2.18	0.44
1:C:400:ARG:H	1:C:400:ARG:HG2	1.32	0.44
1:C:416:LEU:HD13	1:C:422:PRO:N	2.32	0.44
1:D:412:ASP:OD1	1:D:426:ARG:HA	2.17	0.44
1:A:66:GLU:H	1:A:66:GLU:CD	2.20	0.44

Continued on next page...

Continued from previous page...

Atom-1	Atom-2	Interatomic distance (Å)	Clash overlap (Å)
1:A:191:ALA:HA	1:A:278:GLU:OE1	2.18	0.44
1:C:192:SER:CB	1:C:203:HIS:CE1	2.90	0.44
1:A:546:PHE:CE2	1:A:562:LEU:HD13	2.53	0.44
1:C:637:ARG:O	1:C:637:ARG:HG3	2.18	0.44
1:C:143:VAL:HG12	1:C:144:GLY:H	1.81	0.44
1:A:61:ALA:O	1:A:122:ARG:NH2	2.51	0.44
1:C:689:GLU:HG2	1:D:707:PRO:HG2	1.99	0.44
1:B:77:GLN:CB	1:B:78:ARG:HH12	2.31	0.44
1:B:637:ARG:HB2	1:B:675:VAL:HB	1.99	0.44
1:B:454:GLY:HA2	12:B:2011:HOH:O	2.17	0.44
1:A:360:VAL:HG13	1:A:530:LEU:HA	2.00	0.44
2:C:1730:NAG:C6	2:C:1731:NAG:H82	2.45	0.44
1:C:108:ALA:HA	1:C:111:ALA:HB3	1.98	0.44
1:A:646:SER:HB3	1:A:649:ASN:OD1	2.17	0.44
1:B:585:ARG:HG3	1:B:585:ARG:HH11	1.83	0.44
1:A:490:TYR:N	1:A:490:TYR:CD1	2.86	0.44
1:D:404:CYS:HB2	1:D:410:TYR:OH	2.17	0.44
1:C:312:PRO:HA	1:D:322:ARG:CZ	2.47	0.44
1:B:535:LEU:HD22	1:B:673:ASP:OD2	2.17	0.44
1:C:385:VAL:O	1:C:387:GLY:N	2.51	0.44
1:D:223:ARG:HG2	1:D:223:ARG:NH1	2.32	0.44
1:A:637:ARG:HG3	1:A:637:ARG:HH21	1.81	0.44
1:C:386:ASP:HB3	1:C:468:LEU:HD13	2.00	0.44
1:B:369:LEU:HG	12:B:2014:HOH:O	2.18	0.44
1:C:538:TRP:CD1	1:C:670:ALA:HA	2.53	0.44
1:C:245:LEU:HD12	1:C:265:PHE:O	2.18	0.44
3:A:1732:NAG:H4	3:A:1733:FUL:C6	2.37	0.43
1:A:375:ASN:C	1:A:375:ASN:HD22	2.18	0.43
1:C:472:ASP:OD1	1:C:493:GLY:HA3	2.18	0.43
1:B:595:ASN:O	1:B:598:GLY:N	2.50	0.43
1:D:138:VAL:HG23	1:D:164:LEU:HB3	1.99	0.43
1:B:607:MET:O	1:B:608:LEU:HD23	2.17	0.43
1:B:143:VAL:HG12	1:B:144:GLY:N	2.33	0.43
1:D:81:PRO:C	1:D:83:LEU:H	2.21	0.43
1:D:106:LYS:HE3	1:D:361:TYR:CG	2.53	0.43
1:C:647:VAL:HG13	1:C:648:PHE:CE1	2.53	0.43
1:A:483:GLY:O	1:A:707:PRO:HD3	2.18	0.43
1:C:199:CYS:O	1:C:201:TYR:N	2.50	0.43
1:C:316:PHE:O	1:C:318:PRO:HD3	2.19	0.43
1:C:653:PRO:HD2	1:C:654:TRP:CE3	2.54	0.43
1:D:475:TRP:CE3	1:D:489:PHE:HB2	2.53	0.43

Continued on next page...

Continued from previous page...

Atom-1	Atom-2	Interatomic distance (Å)	Clash overlap (Å)
1:C:395:THR:O	1:C:425:ILE:HD13	2.18	0.43
1:A:155:VAL:O	1:A:159:ARG:N	2.41	0.43
1:C:365:LEU:HD12	1:C:366:GLN:H	1.82	0.43
1:A:167:HIS:CD2	1:A:221:GLY:CA	3.02	0.43
1:C:170:PRO:HA	1:C:651:ASN:HD21	1.83	0.43
1:A:500:LEU:HD22	1:A:510:GLN:HG3	2.00	0.43
1:B:77:GLN:HB3	1:B:78:ARG:HH12	1.83	0.43
1:D:573:GLU:C	1:D:575:ALA:H	2.20	0.43
1:A:303:LYS:HB2	1:B:724:TYR:CD2	2.52	0.43
1:B:723:ILE:CG2	1:B:724:TYR:N	2.80	0.43
1:C:665:ASN:OD1	1:C:665:ASN:N	2.49	0.43
1:D:504:THR:O	1:D:504:THR:HG22	2.17	0.43
1:C:195:LEU:HB2	1:C:201:TYR:CD2	2.54	0.43
1:D:90:ARG:HB3	1:D:91:PRO:HD2	2.00	0.43
1:B:184:PHE:CB	1:B:206:ARG:HH11	2.31	0.43
1:A:360:VAL:HG11	1:A:363:ILE:HG12	2.00	0.43
1:A:67:GLU:HB3	1:A:146:LEU:HD22	1.98	0.43
1:C:85:ASP:O	1:C:87:ALA:N	2.51	0.43
1:D:525:HIS:HB2	1:D:627:TRP:CE3	2.53	0.43
1:C:400:ARG:HA	1:C:410:TYR:OH	2.19	0.43
1:A:132:ARG:HH11	1:A:132:ARG:HG3	1.83	0.43
1:A:108:ALA:HA	1:A:111:ALA:HB3	2.01	0.43
1:A:647:VAL:HG13	1:A:648:PHE:CD1	2.54	0.43
1:D:317:TYR:CE1	1:D:433:GLU:HB2	2.48	0.43
1:D:702:GLY:O	1:D:703:PHE:HB3	2.19	0.43
1:D:382:THR:HG21	1:D:384:TYR:CE2	2.54	0.43
1:B:728:ASP:HB2	12:B:2018:HOH:O	2.18	0.43
1:A:379:ALA:O	1:A:381:THR:N	2.51	0.43
1:B:69:THR:O	1:B:73:ARG:HG3	2.17	0.43
1:C:90:ARG:HG2	1:C:91:PRO:CD	2.29	0.43
1:C:441:ARG:HG2	1:C:441:ARG:NH1	2.32	0.43
1:A:319:GLN:NE2	1:B:311:ALA:H	2.16	0.43
1:C:384:TYR:HA	1:C:650:GLN:HE22	1.83	0.43
1:A:313:PRO:HB3	1:B:317:TYR:CD1	2.53	0.43
1:D:89:ALA:HB1	1:D:93:ASP:HB2	2.00	0.43
1:B:270:TYR:OH	1:B:377:PRO:HG3	2.17	0.43
1:D:184:PHE:HA	1:D:188:LEU:HD12	2.00	0.43
1:D:386:ASP:HB3	1:D:468:LEU:CD1	2.47	0.43
1:D:347:PRO:HG2	1:D:475:TRP:CB	2.48	0.43
1:A:563:GLN:HB3	1:B:506:LYS:HB2	2.00	0.43
1:C:319:GLN:HE21	1:D:311:ALA:HB2	1.83	0.43

Continued on next page...

Continued from previous page...

Atom-1	Atom-2	Interatomic distance (Å)	Clash overlap (Å)
1:B:296:THR:CG2	1:B:297:GLY:N	2.82	0.43
1:C:552:PRO:HB2	1:C:553:TRP:CE3	2.54	0.43
3:A:1733:FUL:H63	3:A:1733:FUL:C2	2.46	0.43
1:B:184:PHE:CG	1:B:206:ARG:NH1	2.80	0.43
1:A:562:LEU:HB3	1:B:373:GLY:CA	2.49	0.43
1:C:632:LEU:HD11	1:C:676:ALA:HB1	2.01	0.43
1:D:129:PHE:CZ	1:D:169:ARG:HG3	2.54	0.43
1:D:84:VAL:HG23	1:D:89:ALA:HB2	2.00	0.43
1:D:132:ARG:HG3	1:D:132:ARG:O	2.18	0.43
1:B:386:ASP:HB3	1:B:468:LEU:CD1	2.47	0.43
1:A:129:PHE:CD1	1:A:169:ARG:HD2	2.53	0.43
1:C:621:MET:HB2	1:C:653:PRO:HB2	2.01	0.43
1:D:106:LYS:HG3	1:D:361:TYR:CZ	2.54	0.43
1:A:144:GLY:HA3	1:A:150:SER:H	1.84	0.43
1:A:508:GLY:HA3	1:A:517:GLY:O	2.18	0.43
1:B:198:CYS:HA	1:B:290:LEU:HD23	2.00	0.43
1:B:316:PHE:CE1	1:B:318:PRO:HA	2.48	0.43
1:A:689:GLU:OE2	1:B:707:PRO:HB2	2.18	0.43
1:D:630:TYR:O	1:D:679:THR:HB	2.19	0.43
1:A:441:ARG:HB2	1:B:693:ASN:HB2	1.99	0.43
1:A:110:LEU:HD21	1:A:361:TYR:CD1	2.53	0.43
1:C:249:VAL:O	1:C:251:HIS:HD2	2.02	0.43
1:A:653:PRO:HD2	1:A:654:TRP:CE3	2.54	0.43
1:C:112:HIS:CE1	1:C:119:PRO:HD3	2.54	0.43
1:B:566:ARG:HB3	1:B:566:ARG:HH11	1.84	0.43
1:C:641:GLU:OE2	1:C:663:PHE:HA	2.18	0.43
1:D:369:LEU:HD21	1:D:371:ILE:HD11	2.01	0.42
1:B:539:VAL:HG22	1:B:589:LEU:CD2	2.48	0.42
1:D:539:VAL:CG1	1:D:569:LEU:HD12	2.49	0.42
1:D:142:VAL:HG21	1:D:155:VAL:HG11	2.00	0.42
1:A:616:PRO:HD3	1:B:546:PHE:CD1	2.54	0.42
1:A:153:ARG:HB3	1:A:153:ARG:NH1	2.34	0.42
1:B:473:TYR:HB3	1:B:475:TRP:CE2	2.53	0.42
1:A:138:VAL:HG13	1:A:164:LEU:HB3	2.00	0.42
1:A:621:MET:HB2	1:A:653:PRO:HB2	2.00	0.42
1:A:314:LEU:N	1:A:314:LEU:CD2	2.82	0.42
1:A:322:ARG:CZ	1:B:312:PRO:HA	2.48	0.42
1:C:526:PHE:CD1	1:C:526:PHE:N	2.87	0.42
1:D:427:ASP:OD2	1:D:427:ASP:N	2.52	0.42
1:A:189:PRO:HA	1:A:203:HIS:HE1	1.83	0.42
1:A:588:TYR:HB2	1:A:603:TYR:C	2.40	0.42

Continued on next page...

Continued from previous page...

Atom-1	Atom-2	Interatomic distance (Å)	Clash overlap (Å)
1:C:67:GLU:HB3	1:C:146:LEU:HD22	2.01	0.42
1:B:614:PRO:CG	1:B:629:ARG:HG2	2.49	0.42
1:C:483:GLY:O	1:C:707:PRO:HD3	2.20	0.42
1:D:536:GLU:HA	1:D:672:LYS:O	2.19	0.42
1:D:63:LEU:HD11	1:D:124:ALA:CB	2.50	0.42
1:C:246:GLU:OE1	1:C:377:PRO:HD2	2.19	0.42
1:A:194:LEU:HA	1:A:281:PHE:CE2	2.55	0.42
1:D:395:THR:HA	1:D:466:SER:HA	2.00	0.42
1:C:166:TYR:O	1:C:169:ARG:HG2	2.20	0.42
1:B:371:ILE:O	1:B:520:HIS:HA	2.20	0.42
1:C:636:GLN:HE21	1:C:667:GLU:HB3	1.84	0.42
1:B:590:ALA:HA	1:B:602:GLY:HA2	2.01	0.42
1:A:187:GLU:C	1:A:189:PRO:HD2	2.40	0.42
1:C:229:LEU:HD11	1:C:247:LEU:HD12	2.01	0.42
1:C:615:LEU:O	1:C:616:PRO:O	2.37	0.42
1:D:723:ILE:CG2	1:D:724:TYR:N	2.82	0.42
1:D:396:THR:CG2	1:D:467:THR:HB	2.50	0.42
1:C:182:MET:O	1:C:187:GLU:HG2	2.19	0.42
1:A:468:LEU:CB	1:A:471:PAQ:HN1	2.27	0.42
1:B:138:VAL:HG23	1:B:164:LEU:HB3	2.01	0.42
1:A:147:PRO:O	1:A:149:PRO:HD3	2.19	0.42
1:B:408:ALA:HB1	1:B:432:PHE:HB3	2.01	0.42
1:D:157:VAL:HG23	1:D:158:GLU:N	2.35	0.42
1:A:588:TYR:HB3	1:A:604:ARG:CB	2.50	0.42
1:B:441:ARG:HG2	1:B:441:ARG:HH11	1.84	0.42
1:A:86:ALA:HA	1:A:89:ALA:HB2	2.00	0.42
1:C:366:GLN:HB2	1:C:525:HIS:O	2.20	0.42
1:C:668:THR:HG23	1:C:668:THR:O	2.20	0.42
1:C:601:ARG:NH1	1:C:710:PHE:O	2.53	0.42
1:C:433:GLU:HG2	1:C:458:THR:CG2	2.50	0.42
1:B:241:HIS:CE1	1:B:299:SER:O	2.73	0.42
1:C:198:CYS:HB3	1:C:288:VAL:CG1	2.44	0.42
1:D:83:LEU:HA	1:D:94:ASN:O	2.20	0.42
1:B:64:SER:OG	1:B:67:GLU:HB2	2.20	0.42
1:A:155:VAL:O	1:A:159:ARG:HB3	2.20	0.42
1:D:459:VAL:HG11	1:D:480:HIS:CE1	2.55	0.42
1:A:263:LYS:HE2	12:A:2004:HOH:O	2.19	0.42
1:A:398:LEU:HD13	1:A:430:CYS:HB3	2.02	0.42
1:C:723:ILE:HG22	1:C:724:TYR:N	2.34	0.42
1:C:538:TRP:CZ2	1:C:671:GLY:CA	3.02	0.42
1:C:68:LEU:HD22	1:C:416:LEU:HB2	2.01	0.42

Continued on next page...

Continued from previous page...

Atom-1	Atom-2	Interatomic distance (Å)	Clash overlap (Å)
1:B:627:TRP:HA	1:B:660:PHE:CD2	2.55	0.42
1:A:433:GLU:HG2	1:A:458:THR:CG2	2.50	0.42
1:A:397:PRO:HG3	1:A:425:ILE:HG23	2.01	0.42
1:A:315:GLN:HG2	1:B:315:GLN:HG2	2.02	0.42
1:C:389:PHE:CE1	1:C:650:GLN:OE1	2.73	0.42
1:C:314:LEU:CD2	1:D:318:PRO:HD3	2.50	0.42
1:D:607:MET:O	1:D:608:LEU:HD23	2.20	0.42
1:B:397:PRO:HB3	1:B:426:ARG:O	2.20	0.42
1:B:167:HIS:NE2	1:B:221:GLY:HA2	2.35	0.42
1:D:495:ILE:HG22	12:D:2009:HOH:O	2.20	0.42
1:B:241:HIS:NE2	1:B:299:SER:O	2.53	0.42
1:A:668:THR:O	1:A:668:THR:HG23	2.19	0.42
1:A:274:LEU:HA	1:A:274:LEU:HD23	1.65	0.41
1:D:182:MET:O	1:D:187:GLU:HG2	2.20	0.41
1:D:91:PRO:HB2	1:D:254:LEU:HA	2.02	0.41
1:A:315:GLN:OE1	1:A:435:ASN:N	2.53	0.41
1:A:88:GLN:HA	1:A:174:GLN:OE1	2.19	0.41
1:C:367:GLU:HG3	1:C:368:ALA:N	2.35	0.41
1:A:140:GLU:OE1	1:A:160:HIS:HD2	2.00	0.41
1:D:240:LEU:HA	1:D:497:SER:OG	2.19	0.41
1:C:624:GLY:HA2	1:C:656:PRO:HG3	2.01	0.41
1:D:500:LEU:HD23	1:D:510:GLN:NE2	2.35	0.41
1:B:594:SER:HA	1:B:599:HIS:O	2.19	0.41
1:A:546:PHE:CG	1:B:616:PRO:HD3	2.55	0.41
1:C:479:PHE:N	1:C:479:PHE:CD1	2.88	0.41
1:B:596:LYS:HD3	1:B:597:TRP:CE2	2.55	0.41
1:A:311:ALA:HB3	1:B:318:PRO:HG2	2.02	0.41
1:D:632:LEU:HA	1:D:677:TRP:O	2.20	0.41
1:C:177:LEU:HA	1:C:177:LEU:HD23	1.83	0.41
1:D:556:GLU:HG3	1:D:557:HIS:HD1	1.85	0.41
1:A:593:HIS:O	1:A:601:ARG:HG3	2.20	0.41
1:B:266:TYR:OH	1:B:267:GLN:NE2	2.54	0.41
1:D:230:TYR:N	1:D:230:TYR:CD1	2.87	0.41
1:D:182:MET:CG	1:D:186:ARG:HH21	2.33	0.41
1:D:134:PRO:HG2	1:D:135:GLN:H	1.85	0.41
1:D:106:LYS:CB	1:D:637:ARG:HH21	2.30	0.41
1:C:640:GLU:N	1:C:640:GLU:CD	2.73	0.41
1:A:322:ARG:HG2	1:A:322:ARG:HH11	1.85	0.41
1:B:461:VAL:HG12	1:B:462:VAL:N	2.35	0.41
1:D:173:PHE:HE2	1:D:177:LEU:HD11	1.84	0.41
1:C:572:GLU:HG2	1:C:669:ILE:CG2	2.51	0.41

Continued on next page...

Continued from previous page...

Atom-1	Atom-2	Interatomic distance (Å)	Clash overlap (Å)
1:C:250:ASN:ND2	1:C:262:GLN:NE2	2.68	0.41
1:C:195:LEU:HB3	1:C:201:TYR:HB2	2.00	0.41
4:C:1735:NAG:H81	1:D:448:TYR:CD2	2.56	0.41
1:D:341:LEU:HB3	1:D:413:TRP:NE1	2.35	0.41
1:D:455:LEU:HD13	1:D:722:SER:CA	2.50	0.41
1:B:155:VAL:O	1:B:158:GLU:HB3	2.20	0.41
1:A:230:TYR:N	1:A:230:TYR:CD1	2.88	0.41
1:C:710:PHE:C	1:C:710:PHE:CD1	2.94	0.41
1:B:77:GLN:HB3	1:B:78:ARG:NH1	2.35	0.41
1:C:303:LYS:HB2	1:D:724:TYR:CD2	2.55	0.41
1:B:63:LEU:HD11	1:B:124:ALA:CB	2.50	0.41
1:B:214:ALA:HB1	1:B:215:PRO:HA	2.02	0.41
1:A:199:CYS:C	1:A:201:TYR:H	2.23	0.41
1:D:184:PHE:CE2	1:D:206:ARG:HA	2.55	0.41
1:A:637:ARG:HG2	1:A:673:ASP:OD2	2.20	0.41
1:C:63:LEU:HD11	1:C:124:ALA:HB2	2.01	0.41
1:A:81:PRO:O	1:A:83:LEU:N	2.54	0.41
1:D:440:LEU:HD22	1:D:481:PRO:CG	2.49	0.41
1:A:578:LEU:HD23	1:A:630:TYR:CD2	2.55	0.41
1:C:301:SER:OG	1:C:302:LEU:N	2.53	0.41
1:A:364:SER:HB2	12:A:2006:HOH:O	2.20	0.41
1:A:312:PRO:HA	1:B:322:ARG:CZ	2.50	0.41
1:A:130:PHE:HB2	1:A:137:ASN:O	2.20	0.41
1:C:91:PRO:HB2	1:C:254:LEU:O	2.20	0.41
1:A:58:GLN:NE2	1:A:327:GLY:HA3	2.27	0.41
1:A:646:SER:HB2	1:A:658:VAL:CG2	2.51	0.41
1:A:480:HIS:HB3	1:A:481:PRO:HD2	2.02	0.41
1:A:305:PRO:HD2	1:B:718:TYR:HD2	1.85	0.41
1:D:367:GLU:CG	1:D:368:ALA:H	2.34	0.41
1:A:337:PHE:HA	1:A:351:ASP:O	2.20	0.41
1:C:610:PHE:N	1:C:610:PHE:CD1	2.87	0.41
1:B:636:GLN:O	1:B:638:LYS:HG3	2.20	0.41
1:B:280:GLN:HB3	1:B:280:GLN:HE21	1.63	0.41
1:B:506:LYS:H	1:B:506:LYS:HG2	1.56	0.41
1:C:114:ASP:OD2	1:C:358:ARG:NH2	2.54	0.41
1:B:500:LEU:HD12	1:B:501:PHE:N	2.35	0.41
1:B:66:GLU:O	1:B:69:THR:HB	2.20	0.41
1:D:460:LEU:HB3	1:D:479:PHE:HB2	2.03	0.41
1:B:543:ASP:OD1	1:B:544:MET:N	2.52	0.41
1:C:191:ALA:O	1:C:195:LEU:HG	2.21	0.41
10:C:1732:NAG:C6	10:C:1734:FUL:O2	2.69	0.41

Continued on next page...

Continued from previous page...

Atom-1	Atom-2	Interatomic distance (Å)	Clash overlap (Å)
1:B:223:ARG:NH1	1:B:223:ARG:HG2	2.35	0.41
1:D:473:TYR:HB3	1:D:475:TRP:CZ2	2.56	0.41
1:A:143:VAL:HG12	1:A:144:GLY:N	2.36	0.41
1:A:182:MET:O	1:A:186:ARG:HB2	2.20	0.41
1:B:426:ARG:HB3	1:B:427:ASP:OD2	2.21	0.41
1:A:525:HIS:HE2	1:A:677:TRP:HB3	1.85	0.41
1:B:246:GLU:OE2	1:B:378:ALA:HB3	2.19	0.41
1:B:432:PHE:HE1	1:B:434:GLN:HB2	1.85	0.41
1:A:85:ASP:OD1	1:A:87:ALA:CB	2.69	0.41
1:C:350:PHE:CE2	1:C:362:GLU:HB2	2.55	0.41
1:C:484:ALA:HA	1:C:705:LEU:O	2.21	0.41
1:D:228:GLY:C	1:D:229:LEU:HD23	2.41	0.41
1:A:360:VAL:HG13	1:A:530:LEU:HD23	2.01	0.41
1:A:380:MET:CE	1:B:552:PRO:HD2	2.50	0.41
1:B:559:LEU:HD12	1:B:559:LEU:C	2.41	0.41
1:C:347:PRO:HG2	1:C:475:TRP:CG	2.56	0.41
1:C:76:THR:HG22	1:C:83:LEU:CD2	2.49	0.41
1:B:372:TYR:O	1:B:383:ARG:NH1	2.48	0.41
1:C:188:LEU:HD23	1:C:188:LEU:HA	1.70	0.41
1:A:214:ALA:HA	1:A:215:PRO:C	2.42	0.41
1:D:539:VAL:HG22	1:D:589:LEU:CD2	2.49	0.41
1:A:225:THR:CG2	1:A:226:TRP:N	2.82	0.41
1:D:554:SER:C	1:D:556:GLU:H	2.24	0.41
1:A:98:SER:O	1:A:126:ALA:HA	2.21	0.41
1:C:500:LEU:CD2	1:C:510:GLN:HG3	2.51	0.41
1:A:78:ARG:HB3	1:A:78:ARG:NH1	2.36	0.41
1:B:455:LEU:HD13	1:B:722:SER:HA	2.01	0.41
1:C:562:LEU:HB3	1:D:373:GLY:HA2	2.03	0.41
1:B:63:LEU:HG	1:B:101:LEU:N	2.36	0.41
1:B:396:THR:CG2	1:B:467:THR:HB	2.51	0.41
1:B:353:ARG:NH2	1:B:358:ARG:NH1	2.69	0.41
1:A:302:LEU:HG	1:B:453:GLY:HA3	2.03	0.41
1:B:504:THR:HG22	1:B:504:THR:O	2.21	0.41
1:D:94:ASN:OD1	1:D:130:PHE:HA	2.21	0.41
1:C:380:MET:HG3	1:D:561:ARG:CD	2.51	0.41
1:D:110:LEU:O	1:D:111:ALA:C	2.59	0.41
1:D:438:LEU:HD12	1:D:439:PRO:HD2	2.03	0.41
1:A:627:TRP:HB3	1:A:660:PHE:CD2	2.56	0.41
1:B:546:PHE:CZ	1:B:562:LEU:HD13	2.56	0.41
1:B:74:PHE:O	1:B:77:GLN:HB2	2.21	0.41
1:B:235:GLY:O	1:B:236:ALA:HB2	2.20	0.41

Continued on next page...

Continued from previous page...

Atom-1	Atom-2	Interatomic distance (Å)	Clash overlap (Å)
1:D:194:LEU:O	1:D:194:LEU:HD12	2.21	0.41
1:A:95:CYS:O	1:A:128:VAL:HG13	2.20	0.41
1:A:85:ASP:O	1:A:87:ALA:N	2.54	0.40
1:C:191:ALA:C	1:C:278:GLU:OE1	2.59	0.40
1:D:83:LEU:HD11	1:D:96:VAL:HG23	2.03	0.40
1:D:187:GLU:C	1:D:189:PRO:HD2	2.41	0.40
1:B:471:PAQ:O	1:B:471:PAQ:HD2	2.21	0.40
1:A:347:PRO:HG2	1:A:475:TRP:CD1	2.56	0.40
1:D:440:LEU:HD23	1:D:455:LEU:HD23	2.03	0.40
1:C:442:ARG:HH11	1:D:472:ASP:HB3	1.86	0.40
1:A:313:PRO:HB3	1:B:317:TYR:HD1	1.86	0.40
1:C:397:PRO:HD2	1:D:444:HIS:CD2	2.56	0.40
1:D:330:VAL:HB	1:D:337:PHE:CE1	2.55	0.40
1:C:247:LEU:CD2	1:C:264:VAL:HG23	2.50	0.40
1:B:90:ARG:NH1	1:B:178:ASP:OD2	2.54	0.40
1:C:129:PHE:HZ	1:C:170:PRO:HD2	1.85	0.40
1:A:500:LEU:CD2	1:A:510:GLN:HG3	2.51	0.40
1:C:194:LEU:HA	1:C:281:PHE:CE2	2.56	0.40
1:A:84:VAL:HG21	1:A:93:ASP:OD1	2.21	0.40
1:D:369:LEU:HD12	1:D:370:ALA:H	1.86	0.40
1:B:538:TRP:O	1:B:589:LEU:HA	2.22	0.40
1:C:492:THR:OG1	1:C:493:GLY:N	2.53	0.40
1:A:722:SER:HB3	1:B:304:SER:CB	2.51	0.40
1:D:202:LYS:C	1:D:204:ARG:H	2.24	0.40
1:C:330:VAL:HG12	1:C:331:ALA:N	2.34	0.40
1:C:315:GLN:O	1:C:316:PHE:HB3	2.20	0.40
1:A:318:PRO:HB2	1:B:311:ALA:HB3	2.03	0.40
1:B:369:LEU:HD11	1:B:371:ILE:CG1	2.50	0.40
1:A:215:PRO:HB3	1:A:653:PRO:HG2	2.03	0.40
1:A:623:ARG:HB3	1:A:656:PRO:HG2	2.03	0.40
1:A:240:LEU:N	1:A:240:LEU:HD23	2.37	0.40
1:A:570:GLU:O	1:A:668:THR:HA	2.21	0.40
1:C:185:ASN:O	1:C:186:ARG:HG3	2.21	0.40
1:A:177:LEU:HA	1:A:177:LEU:HD23	1.83	0.40
1:C:368:ALA:HB3	1:C:386:ASP:HB2	2.03	0.40
1:D:234:SER:CB	4:D:1735:NAG:O6	2.66	0.40
1:D:687:HIS:O	1:D:690:ASP:HB2	2.21	0.40
1:B:389:PHE:HE1	1:B:650:GLN:NE2	2.16	0.40
1:B:648:PHE:HB2	1:B:657:THR:OG1	2.22	0.40
1:C:322:ARG:CZ	1:D:312:PRO:HA	2.52	0.40
1:A:322:ARG:HG2	1:A:322:ARG:NH1	2.36	0.40

Continued on next page...

Continued from previous page...

Atom-1	Atom-2	Interatomic distance (Å)	Clash overlap (Å)
1:B:278:GLU:HG3	1:B:282:GLU:OE1	2.22	0.40
1:A:411:VAL:HG12	1:A:412:ASP:N	2.37	0.40
1:B:142:VAL:HG21	1:B:155:VAL:HG11	2.02	0.40
1:A:614:PRO:HG3	1:A:629:ARG:HA	2.03	0.40
1:C:448:TYR:CE1	1:D:209:VAL:HB	2.57	0.40
1:D:663:PHE:CD1	1:D:663:PHE:N	2.88	0.40

There are no symmetry-related clashes.

5.3 Torsion angles [i](#)

5.3.1 Protein backbone [i](#)

In the following table, the Percentiles column shows the percent Ramachandran outliers of the chain as a percentile score with respect to all X-ray entries followed by that with respect to entries of similar resolution.

The Analysed column shows the number of residues for which the backbone conformation was analysed, and the total number of residues.

Mol	Chain	Analysed	Favoured	Allowed	Outliers	Percentiles	
1	A	669/735 (91%)	571 (85%)	72 (11%)	26 (4%)	4	15
1	B	669/735 (91%)	585 (87%)	76 (11%)	8 (1%)	16	48
1	C	669/735 (91%)	575 (86%)	69 (10%)	25 (4%)	4	17
1	D	669/735 (91%)	587 (88%)	71 (11%)	11 (2%)	12	40
All	All	2676/2940 (91%)	2318 (87%)	288 (11%)	70 (3%)	7	26

All (70) Ramachandran outliers are listed below:

Mol	Chain	Res	Type
1	A	380	MET
1	A	637	ARG
1	B	267	GLN
1	B	386	ASP
1	B	596	LYS
1	C	201	TYR
1	C	380	MET
1	D	596	LYS
1	A	65	ARG

Continued on next page...

Continued from previous page...

Mol	Chain	Res	Type
1	A	82	GLY
1	A	86	ALA
1	A	186	ARG
1	A	223	ARG
1	A	386	ASP
1	A	616	PRO
1	B	380	MET
1	C	65	ARG
1	C	86	ALA
1	C	386	ASP
1	C	418	GLU
1	C	545	VAL
1	C	616	PRO
1	C	637	ARG
1	D	267	GLN
1	D	380	MET
1	D	386	ASP
1	A	89	ALA
1	A	161	GLY
1	A	267	GLN
1	A	316	PHE
1	A	596	LYS
1	A	697	VAL
1	C	81	PRO
1	C	159	ARG
1	C	186	ARG
1	C	200	PHE
1	C	223	ARG
1	C	725	PHE
1	A	200	PHE
1	A	201	TYR
1	A	455	LEU
1	A	725	PHE
1	B	554	SER
1	B	689	GLU
1	C	82	GLY
1	C	505	GLY
1	D	203	HIS
1	D	406	TYR
1	D	469	LEU
1	D	554	SER
1	A	81	PRO

Continued on next page...

Continued from previous page...

Mol	Chain	Res	Type
1	A	145	PRO
1	A	256	PRO
1	A	532	VAL
1	C	89	ALA
1	C	158	GLU
1	C	316	PHE
1	C	448	TYR
1	C	532	VAL
1	D	347	PRO
1	A	545	VAL
1	B	308	PRO
1	C	161	GLY
1	C	310	PRO
1	D	545	VAL
1	A	495	ILE
1	B	555	PRO
1	C	256	PRO
1	A	286	VAL
1	D	692	PRO

5.3.2 Protein sidechains ⓘ

In the following table, the Percentiles column shows the percent sidechain outliers of the chain as a percentile score with respect to all X-ray entries followed by that with respect to entries of similar resolution.

The Analysed column shows the number of residues for which the sidechain conformation was analysed, and the total number of residues.

Mol	Chain	Analysed	Rotameric	Outliers	Percentiles	
1	A	562/609 (92%)	523 (93%)	39 (7%)	19	48
1	B	562/609 (92%)	538 (96%)	24 (4%)	35	71
1	C	562/609 (92%)	527 (94%)	35 (6%)	23	55
1	D	562/609 (92%)	535 (95%)	27 (5%)	31	67
All	All	2248/2436 (92%)	2123 (94%)	125 (6%)	26	60

All (125) residues with a non-rotameric sidechain are listed below:

Mol	Chain	Res	Type
1	A	59	LEU
1	A	88	GLN

Continued on next page...

Continued from previous page...

Mol	Chain	Res	Type
1	A	91	PRO
1	A	138	VAL
1	A	171	VAL
1	A	196	HIS
1	A	203	HIS
1	A	204	ARG
1	A	209	VAL
1	A	229	LEU
1	A	230	TYR
1	A	280	GLN
1	A	291	ILE
1	A	314	LEU
1	A	317	TYR
1	A	322	ARG
1	A	336	THR
1	A	345	SER
1	A	349	ILE
1	A	375	ASN
1	A	383	ARG
1	A	430	CYS
1	A	435	ASN
1	A	441	ARG
1	A	472	ASP
1	A	489	PHE
1	A	490	TYR
1	A	516	LEU
1	A	536	GLU
1	A	587	LEU
1	A	589	LEU
1	A	610	PHE
1	A	625	PHE
1	A	642	PRO
1	A	645	SER
1	A	647	VAL
1	A	665	ASN
1	A	666	ASN
1	A	675	VAL
1	B	58	GLN
1	B	66	GLU
1	B	90	ARG
1	B	154	ASP
1	B	173	PHE

Continued on next page...

Continued from previous page...

Mol	Chain	Res	Type
1	B	203	HIS
1	B	223	ARG
1	B	316	PHE
1	B	326	GLN
1	B	333	SER
1	B	376	SER
1	B	406	TYR
1	B	441	ARG
1	B	476	ASP
1	B	489	PHE
1	B	490	TYR
1	B	513	GLU
1	B	515	THR
1	B	519	VAL
1	B	528	VAL
1	B	603	TYR
1	B	637	ARG
1	B	645	SER
1	B	665	ASN
1	C	88	GLN
1	C	91	PRO
1	C	92	SER
1	C	138	VAL
1	C	171	VAL
1	C	196	HIS
1	C	203	HIS
1	C	204	ARG
1	C	209	VAL
1	C	229	LEU
1	C	230	TYR
1	C	277	LEU
1	C	291	ILE
1	C	317	TYR
1	C	322	ARG
1	C	336	THR
1	C	375	ASN
1	C	400	ARG
1	C	435	ASN
1	C	441	ARG
1	C	442	ARG
1	C	472	ASP
1	C	489	PHE

Continued on next page...

Continued from previous page...

Mol	Chain	Res	Type
1	C	523	SER
1	C	536	GLU
1	C	552	PRO
1	C	589	LEU
1	C	610	PHE
1	C	625	PHE
1	C	647	VAL
1	C	650	GLN
1	C	665	ASN
1	C	666	ASN
1	C	675	VAL
1	C	706	ARG
1	D	66	GLU
1	D	90	ARG
1	D	154	ASP
1	D	169	ARG
1	D	203	HIS
1	D	223	ARG
1	D	316	PHE
1	D	326	GLN
1	D	333	SER
1	D	376	SER
1	D	406	TYR
1	D	427	ASP
1	D	429	PHE
1	D	441	ARG
1	D	476	ASP
1	D	489	PHE
1	D	490	TYR
1	D	513	GLU
1	D	515	THR
1	D	523	SER
1	D	528	VAL
1	D	556	GLU
1	D	603	TYR
1	D	625	PHE
1	D	637	ARG
1	D	645	SER
1	D	665	ASN

Some sidechains can be flipped to improve hydrogen bonding and reduce clashes. All (55) such sidechains are listed below:

Mol	Chain	Res	Type
1	A	160	HIS
1	A	185	ASN
1	A	276	GLN
1	A	280	GLN
1	A	319	GLN
1	A	326	GLN
1	A	375	ASN
1	A	537	ASN
1	A	563	GLN
1	A	606	GLN
1	A	617	GLN
1	A	618	ASN
1	A	636	GLN
1	A	650	GLN
1	A	666	ASN
1	B	181	GLN
1	B	185	ASN
1	B	242	HIS
1	B	250	ASN
1	B	276	GLN
1	B	280	GLN
1	B	315	GLN
1	B	319	GLN
1	B	420	GLN
1	B	510	GLN
1	B	560	GLN
1	B	636	GLN
1	C	160	HIS
1	C	185	ASN
1	C	203	HIS
1	C	219	GLN
1	C	262	GLN
1	C	276	GLN
1	C	280	GLN
1	C	319	GLN
1	C	326	GLN
1	C	375	ASN
1	C	434	GLN
1	C	514	HIS
1	C	537	ASN
1	C	617	GLN
1	C	618	ASN
1	C	636	GLN

Continued on next page...

Continued from previous page...

Mol	Chain	Res	Type
1	C	650	GLN
1	C	666	ASN
1	C	693	ASN
1	D	242	HIS
1	D	280	GLN
1	D	315	GLN
1	D	319	GLN
1	D	420	GLN
1	D	510	GLN
1	D	560	GLN
1	D	636	GLN
1	D	650	GLN

5.3.3 RNA ⓘ

There are no RNA molecules in this entry.

5.4 Non-standard residues in protein, DNA, RNA chains ⓘ

4 non-standard protein/DNA/RNA residues are modelled in this entry.

In the following table, the Counts columns list the number of bonds (or angles) for which Mogul statistics could be retrieved, the number of bonds (or angles) that are observed in the model and the number of bonds (or angles) that are defined in the chemical component dictionary. The Link column lists molecule types, if any, to which the group is linked. The Z score for a bond length (or angle) is the number of standard deviations the observed value is removed from the expected value. A bond length (or angle) with $|Z| > 2$ is considered an outlier worth inspection. RMSZ is the root-mean-square of all Z scores of the bond lengths (or angles).

Mol	Type	Chain	Res	Link	Bond lengths			Bond angles		
					Counts	RMSZ	$\# Z > 2$	Counts	RMSZ	$\# Z > 2$
1	PAQ	A	471	1	17,22,23	1.89	5 (29%)	11,29,31	1.57	2 (18%)
1	PAQ	B	471	1	17,22,23	1.89	5 (29%)	11,29,31	1.62	3 (27%)
1	PAQ	C	471	1	17,22,23	1.92	5 (29%)	11,29,31	1.59	2 (18%)
1	PAQ	D	471	1	17,22,23	1.89	5 (29%)	11,29,31	1.62	2 (18%)

In the following table, the Chirals column lists the number of chiral outliers, the number of chiral centers analysed, the number of these observed in the model and the number defined in the chemical component dictionary. Similar counts are reported in the Torsion and Rings columns. '-' means no outliers of that kind were identified.

Mol	Type	Chain	Res	Link	Chirals	Torsions	Rings
1	PAQ	A	471	1	1/1/5/10	0/7/27/29	0/2/2/2
1	PAQ	B	471	1	1/1/5/10	0/7/27/29	0/2/2/2
1	PAQ	C	471	1	1/1/5/10	0/7/27/29	0/2/2/2
1	PAQ	D	471	1	1/1/5/10	0/7/27/29	0/2/2/2

All (20) bond length outliers are listed below:

Mol	Chain	Res	Type	Atoms	Z	Observed(Å)	Ideal(Å)
1	A	471	PAQ	CG-CD2	-4.87	1.39	1.50
1	D	471	PAQ	CG-CD2	-4.85	1.39	1.50
1	C	471	PAQ	CG-CD2	-4.84	1.39	1.50
1	B	471	PAQ	CG-CD2	-4.83	1.39	1.50
1	C	471	PAQ	CE1-CD1	-3.13	1.39	1.45
1	B	471	PAQ	CE1-CD1	-3.11	1.39	1.45
1	D	471	PAQ	CE1-CD1	-3.10	1.39	1.45
1	A	471	PAQ	CE1-CD1	-3.04	1.39	1.45
1	C	471	PAQ	N2-N1	-3.01	1.32	1.39
1	B	471	PAQ	N2-N1	-2.97	1.32	1.39
1	D	471	PAQ	N2-N1	-2.95	1.32	1.39
1	A	471	PAQ	N2-N1	-2.90	1.32	1.39
1	A	471	PAQ	O2-CD1	2.03	1.25	1.22
1	B	471	PAQ	O2-CD1	2.03	1.25	1.22
1	D	471	PAQ	O2-CD1	2.06	1.25	1.22
1	C	471	PAQ	O2-CD1	2.21	1.25	1.22
1	A	471	PAQ	CE1-CZ	2.45	1.39	1.35
1	B	471	PAQ	CE1-CZ	2.48	1.39	1.35
1	D	471	PAQ	CE1-CZ	2.49	1.39	1.35
1	C	471	PAQ	CE1-CZ	2.54	1.39	1.35

All (9) bond angle outliers are listed below:

Mol	Chain	Res	Type	Atoms	Z	Observed(°)	Ideal(°)
1	B	471	PAQ	O-C-CA	-2.50	118.98	125.49
1	C	471	PAQ	O-C-CA	-2.42	119.18	125.49
1	A	471	PAQ	O-C-CA	-2.41	119.22	125.49
1	D	471	PAQ	O-C-CA	-2.34	119.40	125.49
1	B	471	PAQ	C4-C5-N3	-2.06	120.00	123.44
1	A	471	PAQ	C5-N3-C1	3.41	121.98	117.28
1	C	471	PAQ	C5-N3-C1	3.53	122.14	117.28
1	D	471	PAQ	C5-N3-C1	3.62	122.26	117.28
1	B	471	PAQ	C5-N3-C1	3.64	122.29	117.28

All (4) chirality outliers are listed below:

Mol	Chain	Res	Type	Atom
1	B	471	PAQ	CG
1	A	471	PAQ	CG
1	D	471	PAQ	CG
1	C	471	PAQ	CG

There are no torsion outliers.

There are no ring outliers.

4 monomers are involved in 18 short contacts:

Mol	Chain	Res	Type	Clashes	Symm-Clashes
1	A	471	PAQ	5	0
1	B	471	PAQ	5	0
1	C	471	PAQ	4	0
1	D	471	PAQ	4	0

5.5 Carbohydrates [i](#)

25 carbohydrates are modelled in this entry.

In the following table, the Counts columns list the number of bonds (or angles) for which Mogul statistics could be retrieved, the number of bonds (or angles) that are observed in the model and the number of bonds (or angles) that are defined in the chemical component dictionary. The Link column lists molecule types, if any, to which the group is linked. The Z score for a bond length (or angle) is the number of standard deviations the observed value is removed from the expected value. A bond length (or angle) with $|Z| > 2$ is considered an outlier worth inspection. RMSZ is the root-mean-square of all Z scores of the bond lengths (or angles).

Mol	Type	Chain	Res	Link	Bond lengths			Bond angles		
					Counts	RMSZ	$\# Z > 2$	Counts	RMSZ	$\# Z > 2$
2	NAG	A	1730	1,2	14,14,15	0.53	0	15,19,21	1.10	2 (13%)
2	NAG	A	1731	2	14,14,15	0.55	0	15,19,21	0.92	1 (6%)
3	NAG	A	1732	1,3	14,14,15	0.80	1 (7%)	15,19,21	1.07	1 (6%)
3	FUL	A	1733	3	10,10,11	0.53	0	14,14,16	1.10	1 (7%)
8	NAG	B	1730	1,8	14,14,15	0.74	0	15,19,21	0.80	0
8	NAG	B	1731	8	14,14,15	0.94	0	15,19,21	0.91	1 (6%)
9	NDG	B	1732	1,9	14,14,15	0.80	0	15,19,21	1.70	3 (20%)
9	NAG	B	1733	9	14,14,15	0.68	0	15,19,21	0.83	0
9	FUL	B	1734	9	10,10,11	0.71	0	14,14,16	0.63	0
8	BMA	B	1737	8	11,11,12	0.93	0	14,15,17	0.61	0
9	BMA	B	1739	9	11,11,12	0.95	1 (9%)	14,15,17	1.31	1 (7%)
9	MAN	B	1740	9	11,11,12	0.71	0	14,15,17	0.91	1 (7%)

Mol	Type	Chain	Res	Link	Bond lengths			Bond angles		
					Counts	RMSZ	# Z > 2	Counts	RMSZ	# Z > 2
2	NAG	C	1730	1,2	14,14,15	0.60	0	15,19,21	0.74	1 (6%)
2	NAG	C	1731	2	14,14,15	0.56	0	15,19,21	1.06	1 (6%)
10	NAG	C	1732	1,10	14,14,15	0.63	0	15,19,21	1.26	2 (13%)
10	NAG	C	1733	10	14,14,15	0.45	0	15,19,21	0.76	1 (6%)
10	FUL	C	1734	10	10,10,11	0.50	0	14,14,16	0.70	0
8	NAG	D	1730	1,8	14,14,15	0.53	0	15,19,21	0.65	0
8	NAG	D	1731	8	14,14,15	0.74	0	15,19,21	0.67	0
9	NDG	D	1732	1,9	14,14,15	0.76	0	15,19,21	1.13	1 (6%)
9	NAG	D	1733	9	14,14,15	0.84	1 (7%)	15,19,21	0.86	1 (6%)
9	FUL	D	1734	9	10,10,11	0.81	0	14,14,16	0.66	0
8	BMA	D	1737	8	11,11,12	0.62	0	14,15,17	0.87	1 (7%)
9	BMA	D	1739	9	11,11,12	1.07	1 (9%)	14,15,17	0.68	0
9	MAN	D	1740	9	11,11,12	0.98	1 (9%)	14,15,17	0.71	1 (7%)

In the following table, the Chirals column lists the number of chiral outliers, the number of chiral centers analysed, the number of these observed in the model and the number defined in the chemical component dictionary. Similar counts are reported in the Torsion and Rings columns. '-' means no outliers of that kind were identified.

Mol	Type	Chain	Res	Link	Chirals	Torsions	Rings
2	NAG	A	1730	1,2	-	0/6/23/26	0/1/1/1
2	NAG	A	1731	2	-	0/6/23/26	0/1/1/1
3	NAG	A	1732	1,3	-	0/6/23/26	0/1/1/1
3	FUL	A	1733	3	-	0/0/17/20	0/1/1/1
8	NAG	B	1730	1,8	-	0/6/23/26	0/1/1/1
8	NAG	B	1731	8	-	0/6/23/26	0/1/1/1
9	NDG	B	1732	1,9	-	0/6/23/26	0/1/1/1
9	NAG	B	1733	9	-	0/6/23/26	0/1/1/1
9	FUL	B	1734	9	-	0/0/17/20	0/1/1/1
8	BMA	B	1737	8	-	0/2/19/22	0/1/1/1
9	BMA	B	1739	9	-	0/2/19/22	0/1/1/1
9	MAN	B	1740	9	-	0/2/19/22	0/1/1/1
2	NAG	C	1730	1,2	-	0/6/23/26	0/1/1/1
2	NAG	C	1731	2	-	0/6/23/26	0/1/1/1
10	NAG	C	1732	1,10	-	0/6/23/26	0/1/1/1
10	NAG	C	1733	10	-	0/6/23/26	0/1/1/1
10	FUL	C	1734	10	-	0/0/17/20	0/1/1/1
8	NAG	D	1730	1,8	-	0/6/23/26	0/1/1/1
8	NAG	D	1731	8	-	0/6/23/26	0/1/1/1
9	NDG	D	1732	1,9	-	0/6/23/26	0/1/1/1
9	NAG	D	1733	9	-	1/6/23/26	0/1/1/1

Continued on next page...

Continued from previous page...

Mol	Type	Chain	Res	Link	Chirals	Torsions	Rings
9	FUL	D	1734	9	-	0/0/17/20	0/1/1/1
8	BMA	D	1737	8	-	0/2/19/22	0/1/1/1
9	BMA	D	1739	9	-	0/2/19/22	0/1/1/1
9	MAN	D	1740	9	-	0/2/19/22	1/1/1/1

All (5) bond length outliers are listed below:

Mol	Chain	Res	Type	Atoms	Z	Observed(Å)	Ideal(Å)
9	D	1733	NAG	C1-C2	2.05	1.55	1.52
9	B	1739	BMA	C2-C3	2.12	1.55	1.52
3	A	1732	NAG	C1-C2	2.21	1.55	1.52
9	D	1740	MAN	C2-C3	2.46	1.55	1.52
9	D	1739	BMA	C2-C3	2.72	1.56	1.52

All (20) bond angle outliers are listed below:

Mol	Chain	Res	Type	Atoms	Z	Observed(°)	Ideal(°)
9	B	1732	NDG	C4-C3-C2	-4.03	104.97	111.23
9	B	1732	NDG	C3-C4-C5	-3.27	104.49	110.20
10	C	1732	NAG	C4-C3-C2	-3.10	106.42	111.23
8	B	1731	NAG	C2-N2-C7	-3.00	119.18	123.04
10	C	1732	NAG	C2-N2-C7	-2.99	119.20	123.04
2	C	1731	NAG	C2-N2-C7	-2.88	119.34	123.04
8	D	1737	BMA	C1-C2-C3	-2.79	106.24	109.54
3	A	1732	NAG	C2-N2-C7	-2.72	119.55	123.04
2	A	1731	NAG	C2-N2-C7	-2.69	119.59	123.04
9	D	1732	NDG	C3-C4-C5	-2.63	105.61	110.20
9	B	1732	NDG	C2-N2-C7	-2.58	119.73	123.04
9	D	1733	NAG	C2-N2-C7	-2.57	119.73	123.04
2	C	1730	NAG	C2-N2-C7	-2.20	120.22	123.04
10	C	1733	NAG	C2-N2-C7	-2.17	120.25	123.04
2	A	1730	NAG	C2-N2-C7	-2.06	120.40	123.04
9	D	1740	MAN	C1-O5-C5	2.39	115.28	112.25
2	A	1730	NAG	C4-C3-C2	2.50	115.12	111.23
3	A	1733	FUL	C1-O5-C5	2.82	116.74	112.38
9	B	1740	MAN	C1-O5-C5	3.07	116.15	112.25
9	B	1739	BMA	C1-C2-C3	4.60	114.98	109.54

There are no chirality outliers.

All (1) torsion outliers are listed below:

Mol	Chain	Res	Type	Atoms
9	D	1733	NAG	O7-C7-N2-C2

All (1) ring outliers are listed below:

Mol	Chain	Res	Type	Atoms
9	D	1740	MAN	C1-C2-C3-C4-C5-O5

16 monomers are involved in 23 short contacts:

Mol	Chain	Res	Type	Clashes	Symm-Clashes
2	A	1730	NAG	2	0
2	A	1731	NAG	2	0
3	A	1732	NAG	2	0
3	A	1733	FUL	4	0
8	B	1730	NAG	1	0
9	B	1732	NDG	2	0
9	B	1733	NAG	2	0
9	B	1734	FUL	1	0
2	C	1730	NAG	3	0
2	C	1731	NAG	3	0
10	C	1732	NAG	5	0
10	C	1733	NAG	3	0
10	C	1734	FUL	2	0
8	D	1730	NAG	3	0
8	D	1731	NAG	3	0
8	D	1737	BMA	1	0

5.6 Ligand geometry

Of 52 ligands modelled in this entry, 42 are monoatomic - leaving 10 for Mogul analysis.

In the following table, the Counts columns list the number of bonds (or angles) for which Mogul statistics could be retrieved, the number of bonds (or angles) that are observed in the model and the number of bonds (or angles) that are defined in the chemical component dictionary. The Link column lists molecule types, if any, to which the group is linked. The Z score for a bond length (or angle) is the number of standard deviations the observed value is removed from the expected value. A bond length (or angle) with $|Z| > 2$ is considered an outlier worth inspection. RMSZ is the root-mean-square of all Z scores of the bond lengths (or angles).

Mol	Type	Chain	Res	Link	Bond lengths			Bond angles		
					Counts	RMSZ	$\# Z > 2$	Counts	RMSZ	$\# Z > 2$
4	NAG	A	1734	1	14,14,15	0.67	0	15,19,21	0.65	0
4	NAG	A	1735	1	14,14,15	0.64	0	15,19,21	0.67	0
4	NAG	B	1735	1	14,14,15	0.69	0	15,19,21	0.85	0

Mol	Type	Chain	Res	Link	Bond lengths			Bond angles		
					Counts	RMSZ	# Z > 2	Counts	RMSZ	# Z > 2
4	NAG	B	1736	1	14,14,15	0.85	1 (7%)	15,19,21	0.70	0
4	NAG	B	1738	1	14,14,15	0.77	1 (7%)	15,19,21	0.64	0
4	NAG	C	1735	1	14,14,15	0.79	1 (7%)	15,19,21	0.67	0
4	NAG	C	1736	1	14,14,15	0.78	1 (7%)	15,19,21	0.85	1 (6%)
4	NAG	D	1735	1	14,14,15	0.84	1 (7%)	15,19,21	0.67	0
11	NDG	D	1736	1	14,14,15	0.71	0	15,19,21	0.76	1 (6%)
4	NAG	D	1738	1	14,14,15	1.03	1 (7%)	15,19,21	0.85	0

In the following table, the Chirals column lists the number of chiral outliers, the number of chiral centers analysed, the number of these observed in the model and the number defined in the chemical component dictionary. Similar counts are reported in the Torsion and Rings columns. '-' means no outliers of that kind were identified.

Mol	Type	Chain	Res	Link	Chirals	Torsions	Rings
4	NAG	A	1734	1	-	0/6/23/26	0/1/1/1
4	NAG	A	1735	1	-	0/6/23/26	0/1/1/1
4	NAG	B	1735	1	-	0/6/23/26	0/1/1/1
4	NAG	B	1736	1	-	0/6/23/26	0/1/1/1
4	NAG	B	1738	1	-	0/6/23/26	0/1/1/1
4	NAG	C	1735	1	-	0/6/23/26	0/1/1/1
4	NAG	C	1736	1	-	0/6/23/26	0/1/1/1
4	NAG	D	1735	1	-	0/6/23/26	0/1/1/1
11	NDG	D	1736	1	-	0/6/23/26	0/1/1/1
4	NAG	D	1738	1	-	0/6/23/26	0/1/1/1

All (6) bond length outliers are listed below:

Mol	Chain	Res	Type	Atoms	Z	Observed(Å)	Ideal(Å)
4	B	1738	NAG	C1-C2	2.02	1.55	1.52
4	D	1735	NAG	C1-C2	2.14	1.55	1.52
4	C	1736	NAG	C1-C2	2.17	1.55	1.52
4	C	1735	NAG	C1-C2	2.22	1.55	1.52
4	B	1736	NAG	C1-C2	2.65	1.56	1.52
4	D	1738	NAG	C1-C2	3.14	1.56	1.52

All (2) bond angle outliers are listed below:

Mol	Chain	Res	Type	Atoms	Z	Observed(°)	Ideal(°)
4	C	1736	NAG	C2-N2-C7	-2.36	120.01	123.04
11	D	1736	NDG	C2-N2-C7	-2.26	120.14	123.04

There are no chirality outliers.

There are no torsion outliers.

There are no ring outliers.

5 monomers are involved in 11 short contacts:

Mol	Chain	Res	Type	Clashes	Symm-Clashes
4	A	1734	NAG	4	0
4	B	1735	NAG	2	0
4	B	1738	NAG	1	0
4	C	1735	NAG	2	0
4	D	1735	NAG	2	0

5.7 Other polymers [i](#)

There are no such residues in this entry.

5.8 Polymer linkage issues [i](#)

There are no chain breaks in this entry.

6 Fit of model and data [i](#)

6.1 Protein, DNA and RNA chains [i](#)

In the following table, the column labelled ‘#RSRZ> 2’ contains the number (and percentage) of RSRZ outliers, followed by percent RSRZ outliers for the chain as percentile scores relative to all X-ray entries and entries of similar resolution. The OWAB column contains the minimum, median, 95th percentile and maximum values of the occupancy-weighted average B-factor per residue. The column labelled ‘Q< 0.9’ lists the number of (and percentage) of residues with an average occupancy less than 0.9.

Mol	Chain	Analysed	<RSRZ>	#RSRZ>2	OWAB(Å ²)	Q<0.9
1	A	671/735 (91%)	-0.23	0 100 100	43, 64, 79, 87	0
1	B	671/735 (91%)	-0.25	2 (0%) 94 94	41, 60, 75, 81	0
1	C	671/735 (91%)	-0.27	2 (0%) 94 94	43, 64, 79, 88	0
1	D	671/735 (91%)	-0.35	2 (0%) 94 94	41, 60, 75, 81	0
All	All	2684/2940 (91%)	-0.28	6 (0%) 95 95	41, 62, 77, 88	0

All (6) RSRZ outliers are listed below:

Mol	Chain	Res	Type	RSRZ
1	C	161	GLY	3.7
1	B	79	LEU	3.4
1	D	203	HIS	2.6
1	D	286	VAL	2.2
1	C	205	GLY	2.1
1	B	205	GLY	2.0

6.2 Non-standard residues in protein, DNA, RNA chains [i](#)

In the following table, the Atoms column lists the number of modelled atoms in the group and the number defined in the chemical component dictionary. LLDF column lists the quality of electron density of the group with respect to its neighbouring residues in protein, DNA or RNA chains. The B-factors column lists the minimum, median, 95th percentile and maximum values of B factors of atoms in the group. The column labelled ‘Q< 0.9’ lists the number of atoms with occupancy less than 0.9.

Mol	Type	Chain	Res	Atoms	RSCC	RSR	LLDF	B-factors(Å ²)	Q<0.9
1	PAQ	B	471	21/22	0.81	0.35	-	55,59,61,61	0
1	PAQ	A	471	21/22	0.83	0.28	-	56,59,60,63	0
1	PAQ	D	471	21/22	0.89	0.27	-	54,59,60,61	0
1	PAQ	C	471	21/22	0.86	0.24	-	56,59,61,61	0

6.3 Carbohydrates

In the following table, the Atoms column lists the number of modelled atoms in the group and the number defined in the chemical component dictionary. LLDF column lists the quality of electron density of the group with respect to its neighbouring residues in protein, DNA or RNA chains. The B-factors column lists the minimum, median, 95th percentile and maximum values of B factors of atoms in the group. The column labelled 'Q< 0.9' lists the number of atoms with occupancy less than 0.9.

Mol	Type	Chain	Res	Atoms	RSCC	RSR	LLDF	B-factors(Å ²)	Q<0.9
9	FUL	D	1734	10/11	0.91	0.26	1.88	84,85,86,86	0
2	NAG	A	1730	14/15	0.94	0.18	0.06	75,77,80,84	0
8	NAG	B	1730	14/15	0.92	0.18	-0.14	72,75,77,80	0
10	FUL	C	1734	10/11	0.96	0.15	-0.26	82,83,84,84	0
10	NAG	C	1732	14/15	0.89	0.15	-0.47	80,83,86,89	0
9	NDG	D	1732	14/15	0.94	0.13	-0.56	76,79,84,88	0
8	NAG	D	1730	14/15	0.95	0.16	-0.82	75,76,78,81	0
2	NAG	C	1730	14/15	0.94	0.12	-1.96	74,75,77,80	0
2	NAG	A	1731	14/15	0.94	0.15	-	88,91,92,92	0
3	NAG	A	1732	14/15	0.86	0.18	-	80,81,83,85	0
2	NAG	C	1731	14/15	0.94	0.15	-	82,84,85,85	0
10	NAG	C	1733	14/15	0.90	0.20	-	91,92,93,93	0
8	NAG	B	1731	14/15	0.90	0.13	-	85,86,89,92	0
9	NAG	D	1733	14/15	0.81	0.23	-	92,95,96,97	0
9	BMA	D	1739	11/12	0.94	0.12	-	97,98,98,98	0
9	MAN	B	1740	11/12	0.75	0.20	-	96,98,99,99	0
9	BMA	B	1739	11/12	0.93	0.10	-	97,97,98,98	0
8	BMA	D	1737	11/12	0.85	0.14	-	89,90,91,91	0
8	BMA	B	1737	11/12	0.88	0.10	-	94,94,95,95	0
8	NAG	D	1731	14/15	0.92	0.17	-	83,85,87,89	0
9	NAG	B	1733	14/15	0.93	0.11	-	95,97,98,98	0
3	FUL	A	1733	10/11	0.93	0.13	-	78,79,80,80	0
9	MAN	D	1740	11/12	0.79	0.17	-	96,98,98,98	0
9	FUL	B	1734	10/11	0.90	0.22	-	91,93,94,95	0
9	NDG	B	1732	14/15	0.91	0.15	-	82,86,91,93	0

6.4 Ligands

In the following table, the Atoms column lists the number of modelled atoms in the group and the number defined in the chemical component dictionary. LLDF column lists the quality of electron density of the group with respect to its neighbouring residues in protein, DNA or RNA chains. The B-factors column lists the minimum, median, 95th percentile and maximum values of B factors of atoms in the group. The column labelled 'Q< 0.9' lists the number of atoms with occupancy less than 0.9.

Mol	Type	Chain	Res	Atoms	RSCC	RSR	LLDF	B-factors(\AA^2)	Q<0.9
6	CU	A	1744	1/1	0.97	0.24	5.18	74,74,74,74	0
6	CU	B	1748	1/1	0.98	0.19	3.43	66,66,66,66	0
6	CU	B	1750	1/1	0.96	0.20	0.88	63,63,63,63	0
4	NAG	B	1735	14/15	0.91	0.20	0.44	69,70,73,73	0
5	CA	B	1743	1/1	0.98	0.18	0.27	47,47,47,47	0
6	CU	D	1749	1/1	0.97	0.17	0.21	67,67,67,67	0
6	CU	A	1745	1/1	0.98	0.14	-0.17	80,80,80,80	0
4	NAG	D	1735	14/15	0.91	0.15	-0.68	71,74,76,77	0
5	CA	A	1736	1/1	0.97	0.15	-0.78	52,52,52,52	0
4	NAG	C	1735	14/15	0.93	0.16	-0.81	70,72,73,74	0
4	NAG	A	1734	14/15	0.91	0.14	-0.85	71,73,74,74	0
5	CA	C	1739	1/1	0.99	0.13	-0.85	50,50,50,50	0
6	CU	C	1747	1/1	0.97	0.11	-1.07	84,84,84,84	0
5	CA	B	1741	1/1	0.97	0.13	-1.09	46,46,46,46	0
5	CA	D	1743	1/1	0.97	0.13	-1.16	46,46,46,46	0
6	CU	C	1745	1/1	0.99	0.14	-1.25	77,77,77,77	0
5	CA	A	1738	1/1	0.97	0.11	-1.29	49,49,49,49	0
6	CU	D	1746	1/1	0.90	0.11	-1.37	78,78,78,78	0
5	CA	C	1737	1/1	0.99	0.11	-1.40	50,50,50,50	0
7	CL	A	1746	1/1	0.96	0.10	-1.41	47,47,47,47	0
7	CL	D	1744	1/1	0.99	0.09	-1.60	45,45,45,45	0
5	CA	D	1741	1/1	0.93	0.11	-1.65	47,47,47,47	0
7	CL	A	1739	1/1	0.98	0.07	-2.19	47,47,47,47	0
7	CL	C	1740	1/1	0.98	0.10	-2.46	49,49,49,49	0
6	CU	D	1750	1/1	0.99	0.10	-2.91	67,67,67,67	0
6	CU	D	1748	1/1	0.99	0.13	-	74,74,74,74	0
4	NAG	D	1738	14/15	0.86	0.18	-	81,83,85,85	0
6	CU	B	1746	1/1	0.97	0.10	-	71,71,71,71	0
6	CU	D	1745	1/1	0.95	0.12	-	79,79,79,79	0
6	CU	C	1738	1/1	0.98	0.16	-	49,49,49,49	0
6	CU	C	1743	1/1	0.97	0.13	-	73,73,73,73	0
6	CU	A	1743	1/1	0.97	0.18	-	84,84,84,84	0
6	CU	B	1749	1/1	0.99	0.11	-	69,69,69,69	0
4	NAG	B	1738	14/15	0.86	0.15	-	81,83,84,85	0
6	CU	B	1744	1/1	0.97	0.20	-	76,76,76,76	0
11	NDG	D	1736	14/15	0.86	0.13	-	83,84,86,86	0
6	CU	C	1741	1/1	0.93	0.12	-	79,79,79,79	0
6	CU	C	1746	1/1	0.99	0.10	-	67,67,67,67	0
4	NAG	B	1736	14/15	0.90	0.10	-	84,86,88,88	0
4	NAG	A	1735	14/15	0.87	0.16	-	84,86,88,89	0
6	CU	A	1737	1/1	0.99	0.21	-	49,49,49,49	0
6	CU	B	1745	1/1	0.97	0.14	-	75,75,75,75	0
4	NAG	C	1736	14/15	0.86	0.14	-	82,85,88,88	0

Continued on next page...

Continued from previous page...

Mol	Type	Chain	Res	Atoms	RSCC	RSR	LLDF	B-factors(\AA^2)	Q<0.9
6	CU	A	1740	1/1	0.89	0.18	-	81,81,81,81	0
6	CU	D	1747	1/1	0.95	0.05	-	82,82,82,82	0
6	CU	C	1744	1/1	0.98	0.14	-	90,90,90,90	0
6	CU	D	1742	1/1	0.98	0.15	-	52,52,52,52	0
6	CU	B	1747	1/1	0.96	0.15	-	81,81,81,81	0
6	CU	B	1742	1/1	0.96	0.20	-	55,55,55,55	0
6	CU	C	1742	1/1	0.96	0.09	-	84,84,84,84	0
6	CU	A	1741	1/1	0.98	0.11	-	83,83,83,83	0
6	CU	A	1742	1/1	0.96	0.13	-	77,77,77,77	0

6.5 Other polymers [i](#)

There are no such residues in this entry.