



Full wwPDB X-ray Structure Validation Report ⓘ

Feb 1, 2016 – 03:19 PM GMT

PDB ID : 4C1K
Title : Crystal structure of pyrococcus furiosus 3-deoxy-D-arabino- heptulosonate 7-phosphate synthase
Authors : Nazmi, A.R.; Schofield, L.R.; Dobson, R.C.J.; Jameson, G.B.; Parker, E.J.
Deposited on : 2013-08-13
Resolution : 2.15 Å(reported)

This is a Full wwPDB X-ray Structure Validation Report for a publicly released PDB entry.
We welcome your comments at validation@mail.wwpdb.org
A user guide is available at
<http://wwpdb.org/validation/2016/XrayValidationReportHelp>
with specific help available everywhere you see the ⓘ symbol.

The following versions of software and data (see [references ⓘ](#)) were used in the production of this report:

MolProbity : 4.02b-467
Mogul : 1.7 (RC4), CSD as536be (2015)
Xtriage (Phenix) : 1.9-1692
EDS : rb-20026688
Percentile statistics : 20151230.v01 (using entries in the PDB archive December 30th 2015)
Refmac : 5.8.0135
CCP4 : 6.5.0
Ideal geometry (proteins) : Engh & Huber (2001)
Ideal geometry (DNA, RNA) : Parkinson et al. (1996)
Validation Pipeline (wwPDB-VP) : trunk26865

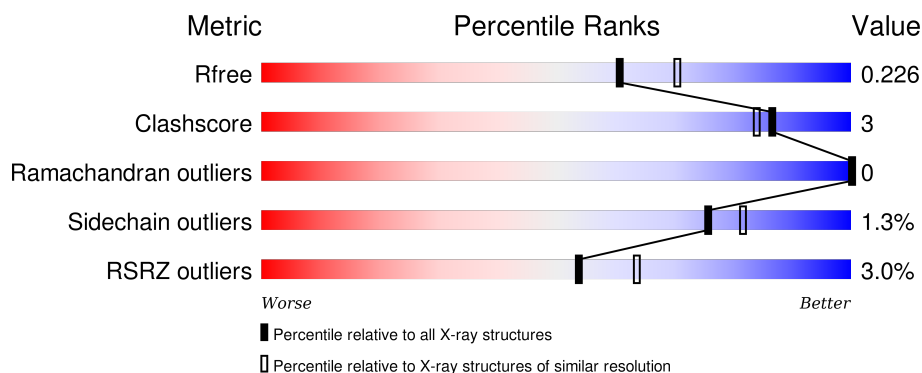
1 Overall quality at a glance

The following experimental techniques were used to determine the structure:

X-RAY DIFFRACTION

The reported resolution of this entry is 2.15 Å.

Percentile scores (ranging between 0-100) for global validation metrics of the entry are shown in the following graphic. The table shows the number of entries on which the scores are based.



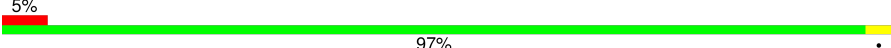
Metric	Whole archive (#Entries)	Similar resolution (#Entries, resolution range(Å))
R_{free}	91344	1045 (2.16-2.16)
Clashscore	102246	1152 (2.16-2.16)
Ramachandran outliers	100387	1131 (2.16-2.16)
Sidechain outliers	100360	1131 (2.16-2.16)
RSRZ outliers	91569	1050 (2.16-2.16)

The table below summarises the geometric issues observed across the polymeric chains and their fit to the electron density. The red, orange, yellow and green segments on the lower bar indicate the fraction of residues that contain outliers for ≥ 3 , 2, 1 and 0 types of geometric quality criteria. A grey segment represents the fraction of residues that are not modelled. The numeric value for each fraction is indicated below the corresponding segment, with a dot representing fractions $\leq 5\%$. The upper red bar (where present) indicates the fraction of residues that have poor fit to the electron density. The numeric value is given above the bar.

Mol	Chain	Length	Quality of chain
1	A	262	<div> <div>2%</div> <div>95%</div> <div>5%</div> </div>
1	B	262	<div> <div>2%</div> <div>95%</div> <div>5%</div> </div>
1	C	262	<div> <div>4%</div> <div>94%</div> <div>6%</div> </div>
1	D	262	<div> <div>2%</div> <div>95%</div> <div>5%</div> </div>
1	E	262	<div> <div>2%</div> <div>95%</div> <div>5%</div> </div>

Continued on next page...

Continued from previous page...

Mol	Chain	Length	Quality of chain
1	F	262	

The following table lists non-polymeric compounds, carbohydrate monomers and non-standard residues in protein, DNA, RNA chains that are outliers for geometric or electron-density-fit criteria:

Mol	Type	Chain	Res	Chirality	Geometry	Clashes	Electron density
2	CO3	A	1263	-	-	X	-
2	CO3	B	1265	-	-	X	-
2	CO3	C	1264	-	-	X	-
2	CO3	D	1263	-	-	X	-
3	PEP	C	1263	-	-	X	-
6	2PE	E	1265	-	-	-	X

2 Entry composition [i](#)

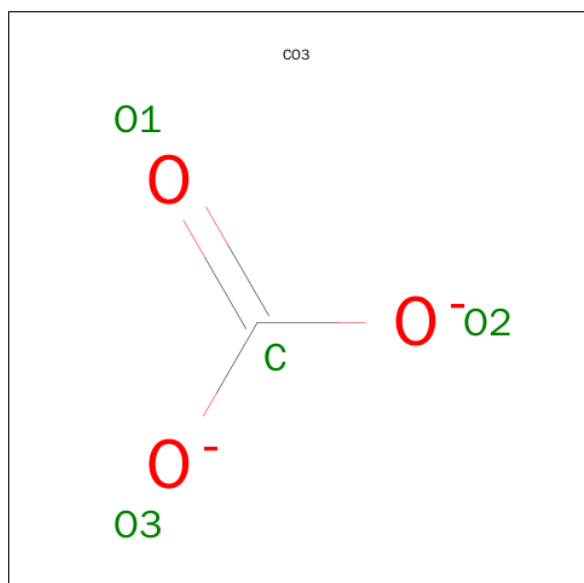
There are 7 unique types of molecules in this entry. The entry contains 12953 atoms, of which 0 are hydrogens and 0 are deuteriums.

In the tables below, the ZeroOcc column contains the number of atoms modelled with zero occupancy, the AltConf column contains the number of residues with at least one atom in alternate conformation and the Trace column contains the number of residues modelled with at most 2 atoms.

- Molecule 1 is a protein called 2-DEHYDRO-3-DEOXYPHOSPHOHEPTONATE ALDOLASE.

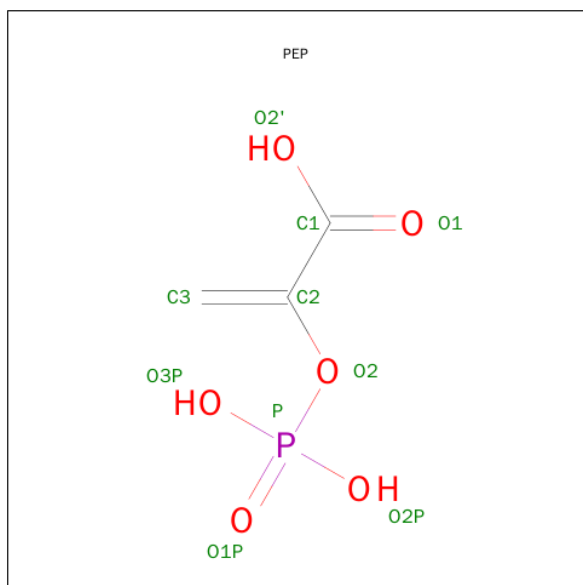
Mol	Chain	Residues	Atoms					ZeroOcc	AltConf	Trace
1	A	262	Total	C	N	O	S	0	1	0
			2066	1319	350	388	9			
1	B	262	Total	C	N	O	S	0	2	0
			2069	1321	348	390	10			
1	C	262	Total	C	N	O	S	0	5	0
			2102	1340	357	394	11			
1	D	262	Total	C	N	O	S	0	1	0
			2066	1319	350	388	9			
1	E	262	Total	C	N	O	S	0	1	0
			2066	1319	350	388	9			
1	F	262	Total	C	N	O	S	0	0	0
			2056	1313	347	387	9			

- Molecule 2 is CARBONATE ION (three-letter code: CO3) (formula: CO₃).



Mol	Chain	Residues	Atoms	ZeroOcc	AltConf
2	A	1	Total C O 4 1 3	0	0
2	B	1	Total C O 4 1 3	0	0
2	C	1	Total C O 4 1 3	0	0
2	D	1	Total C O 4 1 3	0	0

- Molecule 3 is PHOSPHOENOLPYRUVATE (three-letter code: PEP) (formula: $C_3H_5O_6P$).



Mol	Chain	Residues	Atoms	ZeroOcc	AltConf
3	A	1	Total C O P 10 3 6 1	0	0
3	B	1	Total C O P 10 3 6 1	0	0
3	C	1	Total C O P 10 3 6 1	0	0
3	D	1	Total C O P 10 3 6 1	0	0
3	E	1	Total C O P 10 3 6 1	0	0
3	F	1	Total C O P 10 3 6 1	0	0

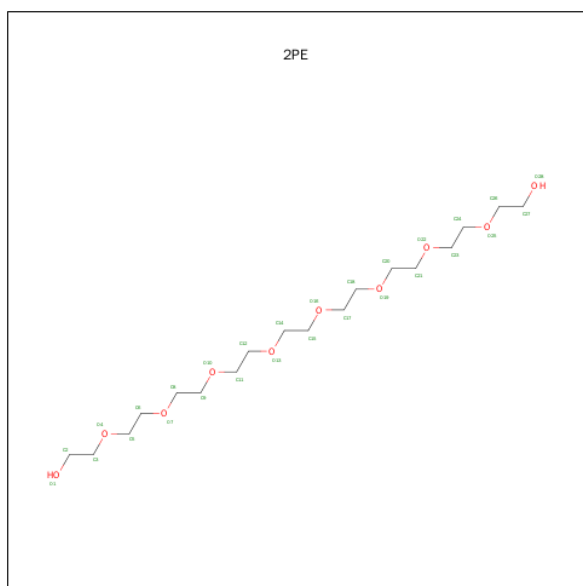
- Molecule 4 is CADMIUM ION (three-letter code: CD) (formula: Cd).

Mol	Chain	Residues	Atoms		ZeroOcc	AltConf
4	D	1	Total	Cd	0	0
			1	1		
4	E	1	Total	Cd	0	0
			1	1		
4	B	1	Total	Cd	0	0
			1	1		
4	C	1	Total	Cd	0	0
			1	1		
4	A	1	Total	Cd	0	0
			1	1		
4	F	1	Total	Cd	0	0
			1	1		

- Molecule 5 is CHLORIDE ION (three-letter code: CL) (formula: Cl).

Mol	Chain	Residues	Atoms		ZeroOcc	AltConf
5	F	1	Total	Cl	0	0
			1	1		
5	E	1	Total	Cl	0	0
			1	1		

- Molecule 6 is NONAETHYLENE GLYCOL (three-letter code: 2PE) (formula: C₁₈H₃₈O₁₀).



Mol	Chain	Residues	Atoms			ZeroOcc	AltConf
6	E	1	Total	C	O	0	0
			28	18	10		

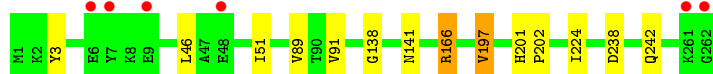
- Molecule 7 is water.

Mol	Chain	Residues	Atoms		ZeroOcc	AltConf
7	A	92	Total 92	O 92	0	0
7	B	68	Total 68	O 68	0	0
7	C	59	Total 59	O 59	0	0
7	D	83	Total 83	O 83	0	0
7	E	84	Total 84	O 84	0	0
7	F	30	Total 30	O 30	0	0

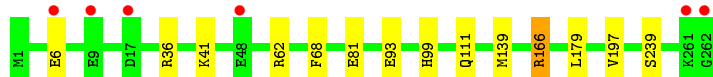
3 Residue-property plots [i](#)

These plots are drawn for all protein, RNA and DNA chains in the entry. The first graphic for a chain summarises the proportions of errors displayed in the second graphic. The second graphic shows the sequence view annotated by issues in geometry and electron density. Residues are color-coded according to the number of geometric quality criteria for which they contain at least one outlier: green = 0, yellow = 1, orange = 2 and red = 3 or more. A red dot above a residue indicates a poor fit to the electron density ($RSRZ > 2$). Stretches of 2 or more consecutive residues without any outlier are shown as a green connector. Residues present in the sample, but not in the model, are shown in grey.

- Molecule 1: 2-DEHYDRO-3-DEOXYPHOSPHOHEPTONATE ALDOLASE



- Molecule 1: 2-DEHYDRO-3-DEOXYPHOSPHOHEPTONATE ALDOLASE



- Molecule 1: 2-DEHYDRO-3-DEOXYPHOSPHOHEPTONATE ALDOLASE



- Molecule 1: 2-DEHYDRO-3-DEOXYPHOSPHOHEPTONATE ALDOLASE

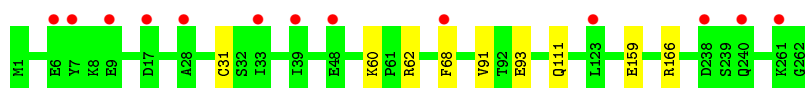


- Molecule 1: 2-DEHYDRO-3-DEOXYPHOSPHOHEPTONATE ALDOLASE



- Molecule 1: 2-DEHYDRO-3-DEOXYPHOSPHOHEPTONATE ALDOLASE





4 Data and refinement statistics

Property	Value	Source
Space group	C 1 2 1	Depositor
Cell constants a, b, c, α , β , γ	185.45Å 79.67Å 144.22Å 90.00° 119.69° 90.00°	Depositor
Resolution (Å)	19.65 – 2.15 19.65 – 2.15	Depositor EDS
% Data completeness (in resolution range)	97.7 (19.65-2.15) 97.9 (19.65-2.15)	Depositor EDS
R_{merge}	0.18	Depositor
R_{sym}	(Not available)	Depositor
$\langle I/\sigma(I) \rangle$ ¹	2.38 (at 2.15Å)	Xtriage
Refinement program	REFMAC 5.7.0029	Depositor
R, R_{free}	0.189 , 0.231 0.191 , 0.226	Depositor DCC
R_{free} test set	4859 reflections (5.26%)	DCC
Wilson B-factor (Å ²)	30.7	Xtriage
Anisotropy	0.124	Xtriage
Bulk solvent k_{sol} (e/Å ³), B_{sol} (Å ²)	0.34 , 36.2	EDS
Estimated twinning fraction	No twinning to report.	Xtriage
L-test for twinning ²	$\langle L \rangle = 0.50$, $\langle L^2 \rangle = 0.33$	Xtriage
Outliers	1 of 97212 reflections (0.001%)	Xtriage
F_o, F_c correlation	0.96	EDS
Total number of atoms	12953	wwPDB-VP
Average B, all atoms (Å ²)	33.0	wwPDB-VP

Xtriage's analysis on translational NCS is as follows: *The largest off-origin peak in the Patterson function is 3.70% of the height of the origin peak. No significant pseudotranslation is detected.*

¹Intensities estimated from amplitudes.

²Theoretical values of $\langle |L| \rangle$, $\langle L^2 \rangle$ for acentric reflections are 0.5, 0.375 respectively for untwinned datasets, and 0.333, 0.2 for perfectly twinned datasets.

5 Model quality

5.1 Standard geometry

Bond lengths and bond angles in the following residue types are not validated in this section: 2PE, CO3, CD, PEP, CL

The Z score for a bond length (or angle) is the number of standard deviations the observed value is removed from the expected value. A bond length (or angle) with $|Z| > 5$ is considered an outlier worth inspection. RMSZ is the root-mean-square of all Z scores of the bond lengths (or angles).

Mol	Chain	Bond lengths		Bond angles	
		RMSZ	# Z >5	RMSZ	# Z >5
1	A	0.56	0/2104	0.74	1/2839 (0.0%)
1	B	0.55	0/2109	0.71	0/2845
1	C	0.56	0/2140	0.71	0/2885
1	D	0.57	0/2104	0.73	1/2839 (0.0%)
1	E	0.56	0/2104	0.73	2/2839 (0.1%)
1	F	0.51	0/2093	0.66	1/2824 (0.0%)
All	All	0.55	0/12654	0.71	5/17071 (0.0%)

There are no bond length outliers.

All (5) bond angle outliers are listed below:

Mol	Chain	Res	Type	Atoms	Z	Observed(°)	Ideal(°)
1	A	91	VAL	CB-CA-C	-5.93	100.13	111.40
1	D	166	ARG	NE-CZ-NH2	-5.41	117.60	120.30
1	E	99[A]	HIS	CB-CA-C	-5.13	100.14	110.40
1	E	99[B]	HIS	CB-CA-C	-5.13	100.14	110.40
1	F	91	VAL	CB-CA-C	-5.10	101.70	111.40

There are no chirality outliers.

There are no planarity outliers.

5.2 Too-close contacts

In the following table, the Non-H and H(model) columns list the number of non-hydrogen atoms and hydrogen atoms in the chain respectively. The H(added) column lists the number of hydrogen atoms added and optimized by MolProbity. The Clashes column lists the number of clashes within the asymmetric unit, whereas Symm-Clashes lists symmetry related clashes.

Mol	Chain	Non-H	H(model)	H(added)	Clashes	Symm-Clashes
1	A	2066	0	2098	11	0
1	B	2069	0	2104	9	0
1	C	2102	0	2131	19	0
1	D	2066	0	2098	8	0
1	E	2066	0	2098	9	0
1	F	2056	0	2092	4	0
2	A	4	0	0	3	0
2	B	4	0	0	2	0
2	C	4	0	0	3	0
2	D	4	0	0	2	0
3	A	10	0	2	3	0
3	B	10	0	2	2	0
3	C	10	0	2	4	0
3	D	10	0	2	2	0
3	E	10	0	2	0	0
3	F	10	0	2	0	0
4	A	1	0	0	0	0
4	B	1	0	0	0	0
4	C	1	0	0	0	0
4	D	1	0	0	1	0
4	E	1	0	0	0	0
4	F	1	0	0	0	0
5	E	1	0	0	0	0
5	F	1	0	0	0	0
6	E	28	0	38	2	0
7	A	92	0	0	0	0
7	B	68	0	0	0	0
7	C	59	0	0	1	0
7	D	83	0	0	3	0
7	E	84	0	0	1	0
7	F	30	0	0	0	0
All	All	12953	0	12671	68	0

The all-atom clashscore is defined as the number of clashes found per 1000 atoms (including hydrogen atoms). The all-atom clashscore for this structure is 3.

All (68) close contacts within the same asymmetric unit are listed below, sorted by their clash magnitude.

Atom-1	Atom-2	Interatomic distance (Å)	Clash overlap (Å)
1:C:93[B]:GLU:OE2	1:C:95[B]:MET:CE	1.84	1.24
1:C:93[B]:GLU:CD	1:C:95[B]:MET:HE1	1.60	1.20
1:C:93[B]:GLU:OE2	1:C:95[B]:MET:HE1	1.05	1.18

Continued on next page...

Continued from previous page...

Atom-1	Atom-2	Interatomic distance (Å)	Clash overlap (Å)
1:C:93[B]:GLU:CD	1:C:95[B]:MET:CE	2.13	1.16
1:E:96:ASP:O	1:E:99[B]:HIS:HB2	1.54	1.08
3:B:1263:PEP:H32	2:B:1265:CO3:O2	1.54	1.04
2:D:1263:CO3:O2	3:D:1264:PEP:H32	1.54	1.04
1:C:95[B]:MET:H	1:C:99[B]:HIS:CE1	1.89	0.89
1:C:93[B]:GLU:CD	1:C:95[B]:MET:HE2	1.93	0.88
1:C:95[B]:MET:H	1:C:99[B]:HIS:HE1	1.17	0.88
3:C:1263:PEP:H32	2:C:1264:CO3:O2	1.76	0.85
2:D:1263:CO3:O2	3:D:1264:PEP:C3	2.04	0.83
1:C:93[B]:GLU:CG	1:C:95[B]:MET:HE2	2.17	0.75
3:C:1263:PEP:C3	2:C:1264:CO3:O2	2.15	0.73
3:B:1263:PEP:C3	2:B:1265:CO3:O2	1.94	0.69
1:A:141:ASN:ND2	1:B:139[A]:MET:CE	2.57	0.68
3:C:1263:PEP:O3P	2:C:1264:CO3:O3	0.67	0.67
1:C:95[B]:MET:N	1:C:99[B]:HIS:HE1	1.95	0.63
4:D:1265:CD:CD	7:D:2019:HOH:O	1.70	0.60
2:A:1263:CO3:O3	3:A:1264:PEP:H32	2.01	0.60
1:F:31:CYS:O	1:F:60:LYS:HE2	2.02	0.60
6:E:1265:2PE:H212	7:E:2084:HOH:O	2.02	0.60
1:C:93[B]:GLU:HG2	1:C:95[B]:MET:HE2	1.82	0.59
2:A:1263:CO3:O3	3:A:1264:PEP:C3	2.49	0.59
1:A:138:GLY:HA3	1:A:141:ASN:OD1	2.06	0.55
1:E:1:MET:O	1:E:4:SER:HB3	2.06	0.55
3:C:1263:PEP:C3	7:C:2005:HOH:O	2.53	0.55
1:D:61:PRO:HD3	1:D:95:MET:HE1	1.90	0.53
1:D:93:GLU:HA	1:D:111:GLN:HB3	1.91	0.52
1:B:36:ARG:NH2	1:B:81:GLU:OE1	2.43	0.52
1:C:93[B]:GLU:CG	1:C:95[B]:MET:CE	2.82	0.51
1:F:62:ARG:HD2	1:F:68:PHE:O	2.12	0.50
1:C:93[B]:GLU:OE2	1:C:95[B]:MET:SD	2.70	0.49
1:E:166:ARG:HD3	1:E:166:ARG:C	2.33	0.49
1:E:15:ILE:CD1	1:E:109:ILE:HD11	2.42	0.49
1:F:93:GLU:HA	1:F:111:GLN:HB3	1.94	0.48
1:D:61:PRO:CD	1:D:95:MET:HE1	2.43	0.48
1:A:141:ASN:ND2	1:B:139[A]:MET:HE3	2.28	0.47
1:C:29:GLY:O	1:C:227:GLU:HA	2.14	0.47
1:A:238:ASP:O	1:A:242:GLN:HG3	2.15	0.47
1:A:46:LEU:HB3	1:A:51:ILE:HB	1.96	0.46
1:F:62:ARG:CD	1:F:68:PHE:O	2.63	0.46
1:A:3:TYR:C	1:A:3:TYR:CD1	2.89	0.46
1:E:15:ILE:HD13	1:E:109:ILE:HD11	1.98	0.45

Continued on next page...

Continued from previous page...

Atom-1	Atom-2	Interatomic distance (Å)	Clash overlap (Å)
1:C:227:GLU:HB3	1:C:242:GLN:HG2	1.98	0.45
1:D:62:ARG:NH1	7:D:2036:HOH:O	2.49	0.45
1:D:252:LEU:O	1:D:256:GLU:HG3	2.16	0.45
1:C:201:HIS:N	1:C:202:PRO:HD2	2.32	0.45
1:D:4:SER:HB2	7:D:2005:HOH:O	2.15	0.45
1:A:201:HIS:N	1:A:202:PRO:HD2	2.31	0.45
1:C:166:ARG:C	1:C:166:ARG:HD3	2.38	0.44
1:E:210:ILE:HB	1:E:211:PRO:HD3	1.98	0.44
1:A:197:VAL:O	1:A:224:ILE:HA	2.18	0.44
2:A:1263:CO3:C	3:A:1264:PEP:C3	2.96	0.43
1:B:179:LEU:HD11	1:B:197:VAL:HG13	2.00	0.43
1:A:141:ASN:HD22	1:B:139[A]:MET:CE	2.31	0.43
1:E:59:PHE:CD2	1:E:99[B]:HIS:CE1	3.07	0.43
1:C:68:PHE:CE2	1:C:70:GLY:HA2	2.54	0.42
1:B:93:GLU:HA	1:B:111:GLN:HB3	2.01	0.42
1:B:62:ARG:CD	1:B:68:PHE:O	2.68	0.42
1:A:166:ARG:HD3	1:A:166:ARG:C	2.40	0.42
1:E:46:LEU:HB3	1:E:51:ILE:HB	2.01	0.42
1:A:141:ASN:HD22	1:B:139[A]:MET:HE3	1.85	0.41
1:E:6:GLU:HB2	6:E:1265:2PE:H111	2.02	0.41
1:D:94:VAL:HG23	1:D:99[B]:HIS:HD2	1.86	0.41
1:C:94:VAL:HG21	1:C:100:VAL:HA	2.02	0.41
1:C:139[A]:MET:CE	1:D:141:ASN:ND2	2.84	0.41
1:B:166:ARG:HD3	1:B:166:ARG:C	2.41	0.40

There are no symmetry-related clashes.

5.3 Torsion angles [i](#)

5.3.1 Protein backbone [i](#)

In the following table, the Percentiles column shows the percent Ramachandran outliers of the chain as a percentile score with respect to all X-ray entries followed by that with respect to entries of similar resolution.

The Analysed column shows the number of residues for which the backbone conformation was analysed, and the total number of residues.

Mol	Chain	Analysed	Favoured	Allowed	Outliers	Percentiles
1	A	261/262 (100%)	257 (98%)	4 (2%)	0	100 100

Continued on next page...

Continued from previous page...

Mol	Chain	Analysed	Favoured	Allowed	Outliers	Percentiles	
1	B	262/262 (100%)	260 (99%)	2 (1%)	0	100	100
1	C	265/262 (101%)	261 (98%)	4 (2%)	0	100	100
1	D	261/262 (100%)	258 (99%)	3 (1%)	0	100	100
1	E	261/262 (100%)	257 (98%)	4 (2%)	0	100	100
1	F	260/262 (99%)	259 (100%)	1 (0%)	0	100	100
All	All	1570/1572 (100%)	1552 (99%)	18 (1%)	0	100	100

There are no Ramachandran outliers to report.

5.3.2 Protein sidechains ⓘ

In the following table, the Percentiles column shows the percent sidechain outliers of the chain as a percentile score with respect to all X-ray entries followed by that with respect to entries of similar resolution.

The Analysed column shows the number of residues for which the sidechain conformation was analysed, and the total number of residues.

Mol	Chain	Analysed	Rotameric	Outliers	Percentiles	
1	A	222/221 (100%)	219 (99%)	3 (1%)	74	80
1	B	223/221 (101%)	218 (98%)	5 (2%)	60	63
1	C	226/221 (102%)	222 (98%)	4 (2%)	66	71
1	D	222/221 (100%)	220 (99%)	2 (1%)	84	89
1	E	222/221 (100%)	221 (100%)	1 (0%)	92	95
1	F	221/221 (100%)	219 (99%)	2 (1%)	84	89
All	All	1336/1326 (101%)	1319 (99%)	17 (1%)	76	82

All (17) residues with a non-rotameric sidechain are listed below:

Mol	Chain	Res	Type
1	A	89	VAL
1	A	166	ARG
1	A	197	VAL
1	B	6	GLU
1	B	41	LYS
1	B	99	HIS
1	B	166	ARG
1	B	239	SER

Continued on next page...

Continued from previous page...

Mol	Chain	Res	Type
1	C	10	LYS
1	C	38	GLN
1	C	166	ARG
1	C	256	GLU
1	D	63	THR
1	D	166	ARG
1	E	166	ARG
1	F	159	GLU
1	F	166	ARG

Some sidechains can be flipped to improve hydrogen bonding and reduce clashes. All (3) such sidechains are listed below:

Mol	Chain	Res	Type
1	A	141	ASN
1	D	141	ASN
1	F	141	ASN

5.3.3 RNA [i](#)

There are no RNA molecules in this entry.

5.4 Non-standard residues in protein, DNA, RNA chains [i](#)

There are no non-standard protein/DNA/RNA residues in this entry.

5.5 Carbohydrates [i](#)

There are no carbohydrates in this entry.

5.6 Ligand geometry [i](#)

Of 19 ligands modelled in this entry, 8 are monoatomic - leaving 11 for Mogul analysis.

In the following table, the Counts columns list the number of bonds (or angles) for which Mogul statistics could be retrieved, the number of bonds (or angles) that are observed in the model and the number of bonds (or angles) that are defined in the chemical component dictionary. The Link column lists molecule types, if any, to which the group is linked. The Z score for a bond length (or angle) is the number of standard deviations the observed value is removed from the expected value. A bond length (or angle) with $|Z| > 2$ is considered an outlier worth inspection. RMSZ is the root-mean-square of all Z scores of the bond lengths (or angles).

Mol	Type	Chain	Res	Link	Bond lengths			Bond angles		
					Counts	RMSZ	# Z > 2	Counts	RMSZ	# Z > 2
2	CO3	A	1263	-	0,3,3	0.00	-	0,3,3	0.00	-
3	PEP	A	1264	-	5,9,9	1.07	0	8,13,13	1.33	2 (25%)
3	PEP	B	1263	-	5,9,9	1.02	0	8,13,13	1.42	1 (12%)
2	CO3	B	1265	-	0,3,3	0.00	-	0,3,3	0.00	-
3	PEP	C	1263	-	5,9,9	1.20	1 (20%)	8,13,13	1.32	0
2	CO3	C	1264	-	0,3,3	0.00	-	0,3,3	0.00	-
2	CO3	D	1263	-	0,3,3	0.00	-	0,3,3	0.00	-
3	PEP	D	1264	-	5,9,9	1.13	1 (20%)	8,13,13	1.58	1 (12%)
3	PEP	E	1264	5	5,9,9	1.14	1 (20%)	8,13,13	1.36	1 (12%)
6	2PE	E	1265	-	27,27,27	0.66	0	26,26,26	0.72	0
3	PEP	F	1264	-	5,9,9	1.04	0	8,13,13	1.50	2 (25%)

In the following table, the Chirals column lists the number of chiral outliers, the number of chiral centers analysed, the number of these observed in the model and the number defined in the chemical component dictionary. Similar counts are reported in the Torsion and Rings columns. '-' means no outliers of that kind were identified.

Mol	Type	Chain	Res	Link	Chirals	Torsions	Rings
2	CO3	A	1263	-	-	0/0/0/0	0/0/0/0
3	PEP	A	1264	-	-	0/5/9/9	0/0/0/0
3	PEP	B	1263	-	-	0/5/9/9	0/0/0/0
2	CO3	B	1265	-	-	0/0/0/0	0/0/0/0
3	PEP	C	1263	-	-	0/5/9/9	0/0/0/0
2	CO3	C	1264	-	-	0/0/0/0	0/0/0/0
2	CO3	D	1263	-	-	0/0/0/0	0/0/0/0
3	PEP	D	1264	-	-	0/5/9/9	0/0/0/0
3	PEP	E	1264	5	-	0/5/9/9	0/0/0/0
6	2PE	E	1265	-	-	0/25/25/25	0/0/0/0
3	PEP	F	1264	-	-	0/5/9/9	0/0/0/0

All (3) bond length outliers are listed below:

Mol	Chain	Res	Type	Atoms	Z	Observed(Å)	Ideal(Å)
3	D	1264	PEP	O2-C2	2.20	1.45	1.39
3	E	1264	PEP	O2-C2	2.21	1.45	1.39
3	C	1263	PEP	O2-C2	2.26	1.45	1.39

All (7) bond angle outliers are listed below:

Mol	Chain	Res	Type	Atoms	Z	Observed(°)	Ideal(°)
3	A	1264	PEP	P-O2-C2	2.05	127.52	122.96

Continued on next page...

Continued from previous page...

Mol	Chain	Res	Type	Atoms	Z	Observed(°)	Ideal(°)
3	F	1264	PEP	P-O2-C2	2.07	127.56	122.96
3	A	1264	PEP	O3P-P-O2P	2.17	115.64	107.38
3	F	1264	PEP	O3P-P-O2P	2.30	116.13	107.38
3	B	1263	PEP	O3P-P-O2P	2.42	116.59	107.38
3	E	1264	PEP	O3P-P-O2P	2.65	117.47	107.38
3	D	1264	PEP	P-O2-C2	2.99	129.60	122.96

There are no chirality outliers.

There are no torsion outliers.

There are no ring outliers.

9 monomers are involved in 13 short contacts:

Mol	Chain	Res	Type	Clashes	Symm-Clashes
2	A	1263	CO3	3	0
3	A	1264	PEP	3	0
3	B	1263	PEP	2	0
2	B	1265	CO3	2	0
3	C	1263	PEP	4	0
2	C	1264	CO3	3	0
2	D	1263	CO3	2	0
3	D	1264	PEP	2	0
6	E	1265	2PE	2	0

5.7 Other polymers [i](#)

There are no such residues in this entry.

5.8 Polymer linkage issues [i](#)

There are no chain breaks in this entry.

6 Fit of model and data

6.1 Protein, DNA and RNA chains

In the following table, the column labelled ‘#RSRZ> 2’ contains the number (and percentage) of RSRZ outliers, followed by percent RSRZ outliers for the chain as percentile scores relative to all X-ray entries and entries of similar resolution. The OWAB column contains the minimum, median, 95th percentile and maximum values of the occupancy-weighted average B-factor per residue. The column labelled ‘Q< 0.9’ lists the number of (and percentage) of residues with an average occupancy less than 0.9.

Mol	Chain	Analysed	<RSRZ>	#RSRZ>2	OWAB(Å ²)	Q<0.9
1	A	262/262 (100%)	-0.22	6 (2%) 64 72	17, 30, 47, 65	1 (0%)
1	B	262/262 (100%)	-0.20	6 (2%) 64 72	19, 31, 49, 67	1 (0%)
1	C	262/262 (100%)	0.01	11 (4%) 40 50	19, 32, 56, 74	1 (0%)
1	D	262/262 (100%)	-0.23	5 (1%) 70 78	16, 28, 43, 65	1 (0%)
1	E	262/262 (100%)	-0.20	6 (2%) 64 72	20, 30, 49, 75	1 (0%)
1	F	262/262 (100%)	0.06	13 (4%) 32 43	23, 36, 59, 76	1 (0%)
All	All	1572/1572 (100%)	-0.13	47 (2%) 54 64	16, 32, 52, 76	6 (0%)

All (47) RSRZ outliers are listed below:

Mol	Chain	Res	Type	RSRZ
1	A	7	TYR	4.0
1	E	239	SER	3.9
1	C	261	LYS	3.9
1	E	233	GLU	3.5
1	E	262	GLY	3.4
1	B	262	GLY	3.2
1	C	262	GLY	3.1
1	F	9	GLU	3.0
1	B	261	LYS	3.0
1	C	240	GLN	2.9
1	F	17	ASP	2.9
1	C	9	GLU	2.9
1	C	238	ASP	2.8
1	C	236	LEU	2.7
1	B	6	GLU	2.7
1	F	240	GLN	2.7
1	A	262	GLY	2.7
1	E	235	ALA	2.7
1	F	6	GLU	2.6

Continued on next page...

Continued from previous page...

Mol	Chain	Res	Type	RSRZ
1	F	48	GLU	2.6
1	C	233	GLU	2.6
1	F	68	PHE	2.6
1	F	39	ILE	2.5
1	E	261	LYS	2.5
1	C	237	SER	2.5
1	C	234	LYS	2.5
1	C	48	GLU	2.4
1	F	7	TYR	2.4
1	B	48	GLU	2.3
1	A	261	LYS	2.3
1	D	261	LYS	2.3
1	B	9	GLU	2.3
1	A	9	GLU	2.2
1	D	39	ILE	2.2
1	A	6	GLU	2.2
1	F	28	ALA	2.2
1	D	262	GLY	2.2
1	F	33	ILE	2.2
1	A	48	GLU	2.1
1	F	238	ASP	2.1
1	B	17	ASP	2.1
1	C	235	ALA	2.1
1	E	234	LYS	2.1
1	D	193	LEU	2.1
1	D	236	LEU	2.1
1	F	123	LEU	2.0
1	F	261	LYS	2.0

6.2 Non-standard residues in protein, DNA, RNA chains [i](#)

There are no non-standard protein/DNA/RNA residues in this entry.

6.3 Carbohydrates [i](#)

There are no carbohydrates in this entry.

6.4 Ligands [i](#)

In the following table, the Atoms column lists the number of modelled atoms in the group and the number defined in the chemical component dictionary. LLDF column lists the quality of electron

density of the group with respect to its neighbouring residues in protein, DNA or RNA chains. The B-factors column lists the minimum, median, 95th percentile and maximum values of B factors of atoms in the group. The column labelled 'Q< 0.9' lists the number of atoms with occupancy less than 0.9.

Mol	Type	Chain	Res	Atoms	RSCC	RSR	LLDF	B-factors(Å ²)	Q<0.9
6	2PE	E	1265	28/28	0.82	0.14	2.54	26,41,50,53	0
3	PEP	E	1264	10/10	0.97	0.12	0.98	21,23,24,25	10
3	PEP	B	1263	10/10	0.96	0.12	0.91	20,22,23,25	10
3	PEP	A	1264	10/10	0.97	0.11	0.72	21,22,23,24	10
3	PEP	C	1263	10/10	0.96	0.12	0.43	18,21,23,24	10
3	PEP	D	1264	10/10	0.98	0.10	0.02	18,21,22,22	10
2	CO3	B	1265	4/4	0.98	0.08	-0.05	45,45,47,48	4
3	PEP	F	1264	10/10	0.98	0.09	-0.36	23,25,26,26	10
2	CO3	C	1264	4/4	0.99	0.08	-0.37	40,42,44,48	4
2	CO3	A	1263	4/4	0.99	0.07	-0.52	37,39,39,40	4
5	CL	F	1263	1/1	0.99	0.07	-0.91	59,59,59,59	1
2	CO3	D	1263	4/4	0.99	0.05	-1.05	38,39,39,40	4
4	CD	F	1265	1/1	0.98	0.07	-1.39	33,33,33,33	1
4	CD	C	1265	1/1	1.00	0.06	-1.42	38,38,38,38	1
4	CD	E	1266	1/1	0.99	0.05	-1.78	38,38,38,38	1
4	CD	B	1264	1/1	0.99	0.02	-2.53	25,25,25,25	1
4	CD	A	1265	1/1	0.99	0.03	-2.55	28,28,28,28	1
4	CD	D	1265	1/1	0.99	0.02	-3.02	25,25,25,25	1
5	CL	E	1263	1/1	1.00	0.03	-	67,67,67,67	1

6.5 Other polymers ⓘ

There are no such residues in this entry.