



Full wwPDB X-ray Structure Validation Report ⓘ

Oct 17, 2016 – 11:44 PM EDT

PDB ID : 5C1U
Title : Crystal structure of EV71 3C Proteinase in complex with Compound Xb
Authors : Zhang, L.; Huang, G.; Cai, Q.; Zhao, C.; Ren, H.; Li, P.; Li, N.; Chen, S.; Li, J.; Lin, T.
Deposited on : 2015-06-15
Resolution : 1.49 Å(reported)

This is a Full wwPDB X-ray Structure Validation Report for a publicly released PDB entry.

We welcome your comments at validation@mail.wwpdb.org

A user guide is available at

<http://wwpdb.org/validation/2016/XrayValidationReportHelp>

with specific help available everywhere you see the ⓘ symbol.

The following versions of software and data (see [references ⓘ](#)) were used in the production of this report:

MolProbity : 4.02b-467
Mogul : 1.7.1 (RC1), CSD as537be (2016)
Xtriage (Phenix) : 1.9-1692
EDS : rb-20027939
Percentile statistics : 20151230.v01 (using entries in the PDB archive December 30th 2015)
Refmac : 5.8.0135
CCP4 : 6.5.0
Ideal geometry (proteins) : Engh & Huber (2001)
Ideal geometry (DNA, RNA) : Parkinson et al. (1996)
Validation Pipeline (wwPDB-VP) : rb-20027939

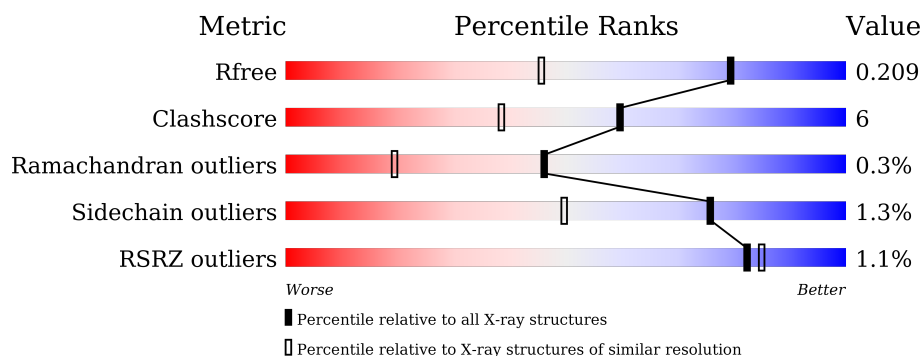
1 Overall quality at a glance ⓘ

The following experimental techniques were used to determine the structure:

X-RAY DIFFRACTION

The reported resolution of this entry is 1.49 Å.

Percentile scores (ranging between 0-100) for global validation metrics of the entry are shown in the following graphic. The table shows the number of entries on which the scores are based.



Metric	Whole archive (#Entries)	Similar resolution (#Entries, resolution range(Å))
R_{free}	91344	2072 (1.50-1.50)
Clashscore	102246	2274 (1.50-1.50)
Ramachandran outliers	100387	2218 (1.50-1.50)
Sidechain outliers	100360	2216 (1.50-1.50)
RSRZ outliers	91569	2075 (1.50-1.50)

The table below summarises the geometric issues observed across the polymeric chains and their fit to the electron density. The red, orange, yellow and green segments on the lower bar indicate the fraction of residues that contain outliers for ≥ 3 , 2, 1 and 0 types of geometric quality criteria. A grey segment represents the fraction of residues that are not modelled. The numeric value for each fraction is indicated below the corresponding segment, with a dot representing fractions $\leq 5\%$. The upper red bar (where present) indicates the fraction of residues that have poor fit to the electron density. The numeric value is given above the bar.

Mol	Chain	Length	Quality of chain
1	A	192	<div> <div></div> <div>83%</div> <div>10%</div> <div>6%</div> </div>
1	B	192	<div> <div></div> <div>82%</div> <div>11%</div> <div>6%</div> </div>

The following table lists non-polymeric compounds, carbohydrate monomers and non-standard residues in protein, DNA, RNA chains that are outliers for geometric or electron-density-fit criteria:

Mol	Type	Chain	Res	Chirality	Geometry	Clashes	Electron density
2	GHV	B	201	-	-	-	X

2 Entry composition

There are 3 unique types of molecules in this entry. The entry contains 3219 atoms, of which 0 are hydrogens and 0 are deuteriums.

In the tables below, the ZeroOcc column contains the number of atoms modelled with zero occupancy, the AltConf column contains the number of residues with at least one atom in alternate conformation and the Trace column contains the number of residues modelled with at most 2 atoms.

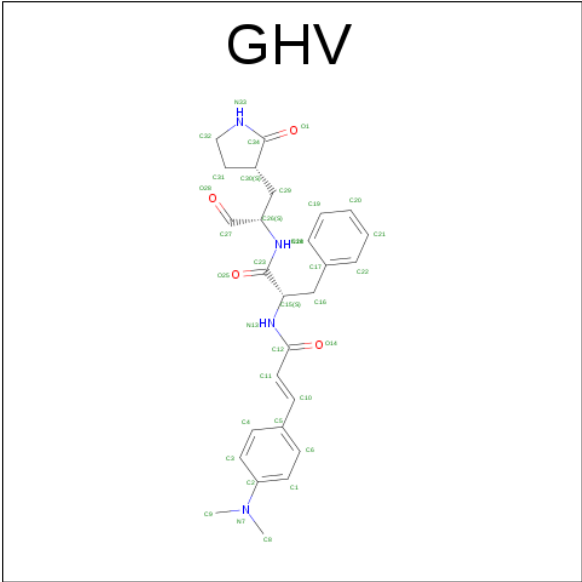
- Molecule 1 is a protein called 3C proteinase.

Mol	Chain	Residues	Atoms					ZeroOcc	AltConf	Trace
1	A	181	Total	C	N	O	S	0	1	0
			1407	892	250	257	8			
1	B	181	Total	C	N	O	S	0	2	0
			1417	898	255	256	8			

There are 18 discrepancies between the modelled and reference sequences:

Chain	Residue	Modelled	Actual	Comment	Reference
A	0	MET	-	expression tag	UNP A9XG43
A	184	LEU	-	expression tag	UNP A9XG43
A	185	GLU	-	expression tag	UNP A9XG43
A	186	HIS	-	expression tag	UNP A9XG43
A	187	HIS	-	expression tag	UNP A9XG43
A	188	HIS	-	expression tag	UNP A9XG43
A	189	HIS	-	expression tag	UNP A9XG43
A	190	HIS	-	expression tag	UNP A9XG43
A	191	HIS	-	expression tag	UNP A9XG43
B	0	MET	-	expression tag	UNP A9XG43
B	184	LEU	-	expression tag	UNP A9XG43
B	185	GLU	-	expression tag	UNP A9XG43
B	186	HIS	-	expression tag	UNP A9XG43
B	187	HIS	-	expression tag	UNP A9XG43
B	188	HIS	-	expression tag	UNP A9XG43
B	189	HIS	-	expression tag	UNP A9XG43
B	190	HIS	-	expression tag	UNP A9XG43
B	191	HIS	-	expression tag	UNP A9XG43

- Molecule 2 is Nalpha-{(2E)-3-[4-(dimethylamino)phenyl]prop-2-enoyl}-N-{(2S)-1-oxo-3-[(3S)-2-oxopyrrolidin-3-yl]propan-2-yl}-L-phenylalaninamide (three-letter code: GHV) (formula: C₂₇H₃₂N₄O₄).



Mol	Chain	Residues	Atoms				ZeroOcc	AltConf
2	A	1	Total	C	N	O	0	0
			35	27	4	4		
2	B	1	Total	C	N	O	0	0
			35	27	4	4		

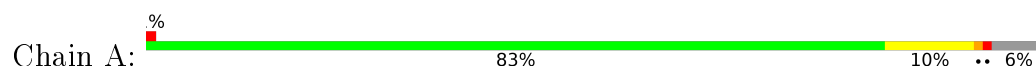
- Molecule 3 is water.

Mol	Chain	Residues	Atoms		ZeroOcc	AltConf
3	A	178	Total	O	0	0
			178	178		
3	B	147	Total	O	0	0
			147	147		

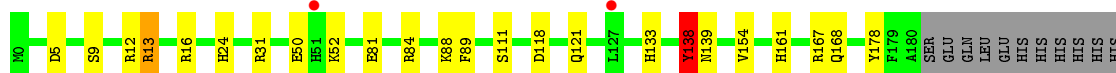
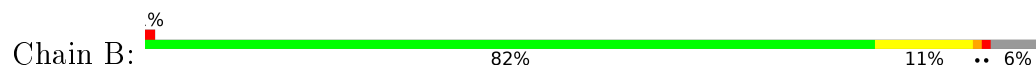
3 Residue-property plots [i](#)

These plots are drawn for all protein, RNA and DNA chains in the entry. The first graphic for a chain summarises the proportions of errors displayed in the second graphic. The second graphic shows the sequence view annotated by issues in geometry and electron density. Residues are color-coded according to the number of geometric quality criteria for which they contain at least one outlier: green = 0, yellow = 1, orange = 2 and red = 3 or more. A red dot above a residue indicates a poor fit to the electron density ($\text{RSRZ} > 2$). Stretches of 2 or more consecutive residues without any outlier are shown as a green connector. Residues present in the sample, but not in the model, are shown in grey.

- Molecule 1: 3C proteinase



- Molecule 1: 3C proteinase



4 Data and refinement statistics

Property	Value	Source
Space group	P 21 21 21	Depositor
Cell constants a, b, c, α , β , γ	63.54Å 64.22Å 75.40Å 90.00° 90.00° 90.00°	Depositor
Resolution (Å)	38.75 – 1.49 38.75 – 1.49	Depositor EDS
% Data completeness (in resolution range)	99.5 (38.75-1.49) 99.5 (38.75-1.49)	Depositor EDS
R_{merge}	0.09	Depositor
R_{sym}	(Not available)	Depositor
$\langle I/\sigma(I) \rangle$ ¹	4.19 (at 1.49Å)	Xtriage
Refinement program	REFMAC 5.7.0029	Depositor
R, R_{free}	0.181 , 0.212 0.178 , 0.209	Depositor DCC
R_{free} test set	2584 reflections (5.35%)	DCC
Wilson B-factor (Å ²)	13.3	Xtriage
Anisotropy	0.758	Xtriage
Bulk solvent k_{sol} (e/Å ³), B_{sol} (Å ²)	0.35 , 48.2	EDS
L-test for twinning ²	$\langle L \rangle = 0.48$, $\langle L^2 \rangle = 0.31$	Xtriage
Estimated twinning fraction	0.002 for k,h,-l	Xtriage
F_o, F_c correlation	0.97	EDS
Total number of atoms	3219	wwPDB-VP
Average B, all atoms (Å ²)	16.0	wwPDB-VP

Xtriage's analysis on translational NCS is as follows: *The analyses of the Patterson function reveals a significant off-origin peak that is 67.63 % of the origin peak, indicating pseudo translational symmetry. The chance of finding a peak of this or larger height randomly in a structure without pseudo translational symmetry is equal to 4.9904e-06. The detected translational NCS is most likely also responsible for the elevated intensity ratio.*

¹ Intensities estimated from amplitudes.

² Theoretical values of $\langle |L| \rangle$, $\langle L^2 \rangle$ for acentric reflections are 0.5, 0.333 respectively for untwinned datasets, and 0.375, 0.2 for perfectly twinned datasets.

5 Model quality ⓘ

5.1 Standard geometry ⓘ

Bond lengths and bond angles in the following residue types are not validated in this section: GHV

The Z score for a bond length (or angle) is the number of standard deviations the observed value is removed from the expected value. A bond length (or angle) with $|Z| > 5$ is considered an outlier worth inspection. RMSZ is the root-mean-square of all Z scores of the bond lengths (or angles).

Mol	Chain	Bond lengths		Bond angles	
		RMSZ	$\# Z > 5$	RMSZ	$\# Z > 5$
1	A	1.12	2/1437 (0.1%)	1.34	11/1945 (0.6%)
1	B	1.21	3/1450 (0.2%)	1.23	9/1961 (0.5%)
All	All	1.17	5/2887 (0.2%)	1.29	20/3906 (0.5%)

All (5) bond length outliers are listed below:

Mol	Chain	Res	Type	Atoms	Z	Observed(Å)	Ideal(Å)
1	A	12	ARG	CZ-NH2	-6.13	1.25	1.33
1	B	9	SER	CB-OG	6.08	1.50	1.42
1	B	178	TYR	CE1-CZ	6.00	1.46	1.38
1	B	111	SER	CB-OG	5.11	1.48	1.42
1	A	12	ARG	CZ-NH1	5.09	1.39	1.33

All (20) bond angle outliers are listed below:

Mol	Chain	Res	Type	Atoms	Z	Observed(°)	Ideal(°)
1	A	12	ARG	NE-CZ-NH2	-20.75	109.93	120.30
1	A	12	ARG	NE-CZ-NH1	14.19	127.40	120.30
1	A	118	ASP	CB-CG-OD1	8.02	125.52	118.30
1	B	167	ARG	CG-CD-NE	7.43	127.40	111.80
1	A	84	ARG	NE-CZ-NH1	-6.97	116.81	120.30
1	B	13[A]	ARG	NE-CZ-NH1	-6.70	116.95	120.30
1	B	13[B]	ARG	NE-CZ-NH1	-6.70	116.95	120.30
1	A	118	ASP	CB-CG-OD2	-6.40	112.54	118.30
1	B	81	GLU	OE1-CD-OE2	5.98	130.48	123.30
1	A	16	ARG	NE-CZ-NH2	-5.85	117.38	120.30
1	A	134	ARG	NE-CZ-NH2	-5.78	117.41	120.30
1	B	5	ASP	CB-CG-OD2	-5.73	113.14	118.30
1	B	118	ASP	CB-CG-OD1	5.48	123.23	118.30
1	A	138	TYR	CB-CG-CD2	-5.43	117.74	121.00

Continued on next page...

Continued from previous page...

Mol	Chain	Res	Type	Atoms	Z	Observed(°)	Ideal(°)
1	B	12	ARG	NE-CZ-NH2	5.34	122.97	120.30
1	A	88	LYS	CD-CE-NZ	-5.27	99.57	111.70
1	B	31	ARG	NE-CZ-NH1	5.27	122.94	120.30
1	A	85	ASP	CB-CG-OD1	5.20	122.98	118.30
1	A	176	ARG	NE-CZ-NH1	-5.02	117.79	120.30
1	B	138	TYR	CB-CG-CD2	-5.00	118.00	121.00

There are no chirality outliers.

There are no planarity outliers.

5.2 Too-close contacts ⓘ

In the following table, the Non-H and H(model) columns list the number of non-hydrogen atoms and hydrogen atoms in the chain respectively. The H(added) column lists the number of hydrogen atoms added and optimized by MolProbity. The Clashes column lists the number of clashes within the asymmetric unit, whereas Symm-Clashes lists symmetry related clashes.

Mol	Chain	Non-H	H(model)	H(added)	Clashes	Symm-Clashes
1	A	1407	0	1428	16	0
1	B	1417	0	1446	17	0
2	A	35	0	0	1	0
2	B	35	0	0	1	0
3	A	178	0	0	5	2
3	B	147	0	0	4	1
All	All	3219	0	2874	33	2

The all-atom clashscore is defined as the number of clashes found per 1000 atoms (including hydrogen atoms). The all-atom clashscore for this structure is 6.

All (33) close contacts within the same asymmetric unit are listed below, sorted by their clash magnitude.

Atom-1	Atom-2	Interatomic distance (Å)	Clash overlap (Å)
1:B:88:LYS:NZ	1:B:89:PHE:CE2	1.89	1.40
1:B:88:LYS:NZ	1:B:89:PHE:CZ	2.06	1.23
1:B:154:VAL:HB	3:B:366:HOH:O	1.50	1.10
1:B:52:LYS:NZ	3:B:301:HOH:O	1.95	0.97
1:B:138:TYR:OH	1:B:161:HIS:HD2	1.75	0.70
1:A:139:ASN:HD22	1:A:168:GLN:HG2	1.57	0.69
1:B:13[B]:ARG:HH11	1:B:13[B]:ARG:HG2	1.61	0.66
1:A:138:TYR:OH	1:A:161:HIS:HD2	1.80	0.65

Continued on next page...

Continued from previous page...

Atom-1	Atom-2	Interatomic distance (Å)	Clash overlap (Å)
1:A:127:LEU:CD1	1:A:163:GLY:HA3	2.31	0.60
1:B:13[B]:ARG:HH11	1:B:13[B]:ARG:CG	2.14	0.60
1:B:13[A]:ARG:NE	1:B:84:ARG:HD3	2.17	0.60
1:A:24:HIS:HD2	3:A:364:HOH:O	1.84	0.60
1:B:139:ASN:HD22	1:B:168:GLN:HG2	1.66	0.60
1:B:24:HIS:HD2	3:B:376:HOH:O	1.86	0.59
1:A:127:LEU:HD11	1:A:163:GLY:HA3	1.86	0.56
1:A:139:ASN:HD21	1:A:168:GLN:HE21	1.53	0.55
1:A:24:HIS:HE1	3:A:461:HOH:O	1.88	0.55
1:B:139:ASN:HD21	1:B:168:GLN:HE21	1.56	0.54
1:B:139:ASN:ND2	1:B:168:GLN:HE21	2.09	0.50
1:A:156:LYS:HE3	3:A:368:HOH:O	2.13	0.47
1:A:17:GLN:HB2	1:A:50:GLU:HG2	1.97	0.47
1:A:12:ARG:NH2	3:A:302:HOH:O	2.39	0.46
1:B:154:VAL:CG2	3:B:366:HOH:O	2.61	0.45
1:B:16[B]:ARG:NE	1:B:16[B]:ARG:HA	2.32	0.44
1:B:88:LYS:NZ	1:B:89:PHE:CD2	2.68	0.44
1:A:139:ASN:ND2	1:A:168:GLN:HG2	2.29	0.43
1:A:139:ASN:ND2	1:A:168:GLN:HE21	2.17	0.43
1:A:28:LEU:HD11	1:A:86:ILE:HD11	2.01	0.42
1:A:161:HIS:HE1	2:A:201:GHV:O1	2.02	0.42
1:B:161:HIS:HE1	2:B:201:GHV:O1	2.04	0.41
1:B:138:TYR:OH	1:B:161:HIS:CD2	2.65	0.41
1:A:143:LYS:NZ	3:A:301:HOH:O	2.12	0.40
1:A:19[B]:GLN:HG2	1:A:24:HIS:CD2	2.57	0.40

All (2) symmetry-related close contacts are listed below. The label for Atom-2 includes the symmetry operator and encoded unit-cell translations to be applied.

Atom-1	Atom-2	Interatomic distance (Å)	Clash overlap (Å)
3:A:307:HOH:O	3:A:458:HOH:O[3_544]	1.51	0.69
3:A:354:HOH:O	3:B:401:HOH:O[4_444]	2.18	0.02

5.3 Torsion angles [i](#)

5.3.1 Protein backbone [i](#)

In the following table, the Percentiles column shows the percent Ramachandran outliers of the chain as a percentile score with respect to all X-ray entries followed by that with respect to entries of similar resolution.

The Analysed column shows the number of residues for which the backbone conformation was analysed, and the total number of residues.

Mol	Chain	Analysed	Favoured	Allowed	Outliers	Percentiles	
1	A	180/192 (94%)	175 (97%)	5 (3%)	0	100	100
1	B	181/192 (94%)	177 (98%)	3 (2%)	1 (1%)	30	8
All	All	361/384 (94%)	352 (98%)	8 (2%)	1 (0%)	46	19

All (1) Ramachandran outliers are listed below:

Mol	Chain	Res	Type
1	B	50	GLU

5.3.2 Protein sidechains ⓘ

In the following table, the Percentiles column shows the percent sidechain outliers of the chain as a percentile score with respect to all X-ray entries followed by that with respect to entries of similar resolution.

The Analysed column shows the number of residues for which the sidechain conformation was analysed, and the total number of residues.

Mol	Chain	Analysed	Rotameric	Outliers	Percentiles	
1	A	156/166 (94%)	155 (99%)	1 (1%)	90	78
1	B	157/166 (95%)	154 (98%)	3 (2%)	65	31
All	All	313/332 (94%)	309 (99%)	4 (1%)	76	50

All (4) residues with a non-rotameric sidechain are listed below:

Mol	Chain	Res	Type
1	A	138	TYR
1	B	121	GLN
1	B	133	HIS
1	B	138	TYR

Some sidechains can be flipped to improve hydrogen bonding and reduce clashes. All (13) such sidechains are listed below:

Mol	Chain	Res	Type
1	A	22	GLN
1	A	24	HIS
1	A	42	GLN

Continued on next page...

Continued from previous page...

Mol	Chain	Res	Type
1	A	51	HIS
1	A	80	ASN
1	A	108	HIS
1	A	139	ASN
1	A	161	HIS
1	B	19	GLN
1	B	22	GLN
1	B	24	HIS
1	B	139	ASN
1	B	161	HIS

5.3.3 RNA ⓘ

There are no RNA molecules in this entry.

5.4 Non-standard residues in protein, DNA, RNA chains ⓘ

There are no non-standard protein/DNA/RNA residues in this entry.

5.5 Carbohydrates ⓘ

There are no carbohydrates in this entry.

5.6 Ligand geometry ⓘ

2 ligands are modelled in this entry.

In the following table, the Counts columns list the number of bonds (or angles) for which Mogul statistics could be retrieved, the number of bonds (or angles) that are observed in the model and the number of bonds (or angles) that are defined in the chemical component dictionary. The Link column lists molecule types, if any, to which the group is linked. The Z score for a bond length (or angle) is the number of standard deviations the observed value is removed from the expected value. A bond length (or angle) with $|Z| > 2$ is considered an outlier worth inspection. RMSZ is the root-mean-square of all Z scores of the bond lengths (or angles).

Mol	Type	Chain	Res	Link	Bond lengths			Bond angles		
					Counts	RMSZ	# $ Z > 2$	Counts	RMSZ	# $ Z > 2$
2	GHV	A	201	1	35,37,37	1.62	5 (14%)	43,49,49	1.92	12 (27%)
2	GHV	B	201	1	35,37,37	1.56	5 (14%)	43,49,49	1.70	6 (13%)

In the following table, the Chirals column lists the number of chiral outliers, the number of chiral centers analysed, the number of these observed in the model and the number defined in the chemical component dictionary. Similar counts are reported in the Torsion and Rings columns. '-' means no outliers of that kind were identified.

Mol	Type	Chain	Res	Link	Chirals	Torsions	Rings
2	GHV	A	201	1	-	0/29/41/41	0/3/3/3
2	GHV	B	201	1	-	0/29/41/41	0/3/3/3

All (10) bond length outliers are listed below:

Mol	Chain	Res	Type	Atoms	Z	Observed(Å)	Ideal(Å)
2	B	201	GHV	C34-N33	-3.83	1.29	1.33
2	A	201	GHV	C16-C15	-2.70	1.47	1.54
2	B	201	GHV	C15-C23	-2.45	1.46	1.52
2	A	201	GHV	C34-N33	-2.13	1.31	1.33
2	B	201	GHV	C30-C34	-2.10	1.49	1.52
2	A	201	GHV	C26-N24	2.42	1.49	1.46
2	A	201	GHV	C2-N7	3.02	1.44	1.37
2	B	201	GHV	C2-N7	3.09	1.44	1.37
2	B	201	GHV	O28-C27	3.99	1.38	1.19
2	A	201	GHV	O28-C27	5.75	1.46	1.19

All (18) bond angle outliers are listed below:

Mol	Chain	Res	Type	Atoms	Z	Observed(°)	Ideal(°)
2	B	201	GHV	O28-C27-C26	-5.61	110.35	125.69
2	A	201	GHV	O28-C27-C26	-5.55	110.53	125.69
2	A	201	GHV	C9-N7-C2	-5.31	111.59	120.55
2	B	201	GHV	C9-N7-C2	-4.45	113.03	120.55
2	B	201	GHV	C8-N7-C2	-3.86	114.03	120.55
2	A	201	GHV	C8-N7-C2	-3.08	115.35	120.55
2	A	201	GHV	C20-C19-C18	-3.01	116.02	120.20
2	A	201	GHV	O1-C34-C30	-2.63	122.94	126.18
2	B	201	GHV	O1-C34-N33	-2.46	123.32	125.75
2	B	201	GHV	C20-C21-C22	-2.28	117.03	120.20
2	A	201	GHV	C9-N7-C8	-2.28	108.52	115.96
2	A	201	GHV	C21-C22-C17	-2.22	117.29	120.65
2	A	201	GHV	C10-C11-C12	-2.15	117.27	121.56
2	A	201	GHV	C5-C10-C11	-2.04	122.26	126.98
2	A	201	GHV	C11-C12-N13	2.07	118.75	114.14
2	B	201	GHV	C16-C15-C23	2.21	116.66	110.19
2	A	201	GHV	C16-C15-N13	2.55	116.21	110.81
2	A	201	GHV	O1-C34-N33	2.61	128.33	125.75

There are no chirality outliers.

There are no torsion outliers.

There are no ring outliers.

2 monomers are involved in 2 short contacts:

Mol	Chain	Res	Type	Clashes	Symm-Clashes
2	A	201	GHV	1	0
2	B	201	GHV	1	0

5.7 Other polymers [i](#)

There are no such residues in this entry.

5.8 Polymer linkage issues [i](#)

There are no chain breaks in this entry.

6 Fit of model and data [i](#)

6.1 Protein, DNA and RNA chains [i](#)

In the following table, the column labelled ‘#RSRZ> 2’ contains the number (and percentage) of RSRZ outliers, followed by percent RSRZ outliers for the chain as percentile scores relative to all X-ray entries and entries of similar resolution. The OWAB column contains the minimum, median, 95th percentile and maximum values of the occupancy-weighted average B-factor per residue. The column labelled ‘Q< 0.9’ lists the number of (and percentage) of residues with an average occupancy less than 0.9.

Mol	Chain	Analysed	<RSRZ>	#RSRZ>2	OWAB(Å ²)	Q<0.9
1	A	181/192 (94%)	-0.14	2 (1%) 82 85	9, 13, 25, 46	0
1	B	181/192 (94%)	-0.10	2 (1%) 82 85	9, 14, 26, 34	0
All	All	362/384 (94%)	-0.12	4 (1%) 82 85	9, 14, 26, 46	0

All (4) RSRZ outliers are listed below:

Mol	Chain	Res	Type	RSRZ
1	A	127	LEU	7.0
1	A	128	SER	3.0
1	B	51	HIS	2.7
1	B	127	LEU	2.4

6.2 Non-standard residues in protein, DNA, RNA chains [i](#)

There are no non-standard protein/DNA/RNA residues in this entry.

6.3 Carbohydrates [i](#)

There are no carbohydrates in this entry.

6.4 Ligands [i](#)

In the following table, the Atoms column lists the number of modelled atoms in the group and the number defined in the chemical component dictionary. LLDF column lists the quality of electron density of the group with respect to its neighbouring residues in protein, DNA or RNA chains. The B-factors column lists the minimum, median, 95th percentile and maximum values of B factors of atoms in the group. The column labelled ‘Q< 0.9’ lists the number of atoms with occupancy less than 0.9.

Mol	Type	Chain	Res	Atoms	RSCC	RSR	LLDF	B-factors(\AA^2)	Q<0.9
2	GHV	B	201	35/35	0.95	0.16	2.63	13,19,98,103	0
2	GHV	A	201	35/35	0.92	0.16	0.95	13,20,85,89	0

6.5 Other polymers [i](#)

There are no such residues in this entry.