



Full wwPDB X-ray Structure Validation Report ⓘ

Feb 1, 2016 – 07:45 AM GMT

PDB ID : 3C2R
Title : Crystal structure of the quinolate phosphoribosyl transferase (BNA6) from *Sachharomyces cerevisiae* complexed with the inhibitor phthalate
Authors : di Luccio, E.; Wilson, D.K.
Deposited on : 2008-01-25
Resolution : 2.40 Å(reported)

This is a Full wwPDB X-ray Structure Validation Report for a publicly released PDB entry.
We welcome your comments at validation@mail.wwpdb.org
A user guide is available at
<http://wwpdb.org/validation/2016/XrayValidationReportHelp>
with specific help available everywhere you see the ⓘ symbol.

The following versions of software and data (see [references ⓘ](#)) were used in the production of this report:

MolProbity : 4.02b-467
Mogul : 1.7 (RC4), CSD as536be (2015)
Xtriage (Phenix) : 1.9-1692
EDS : rb-20026688
Percentile statistics : 20151230.v01 (using entries in the PDB archive December 30th 2015)
Refmac : 5.8.0135
CCP4 : 6.5.0
Ideal geometry (proteins) : Engh & Huber (2001)
Ideal geometry (DNA, RNA) : Parkinson et al. (1996)
Validation Pipeline (wwPDB-VP) : trunk26865

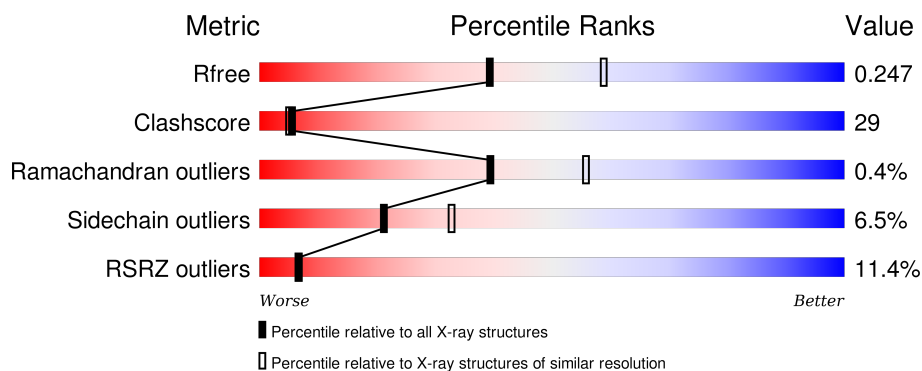
1 Overall quality at a glance ⓘ

The following experimental techniques were used to determine the structure:

X-RAY DIFFRACTION

The reported resolution of this entry is 2.40 Å.

Percentile scores (ranging between 0-100) for global validation metrics of the entry are shown in the following graphic. The table shows the number of entries on which the scores are based.



Metric	Whole archive (#Entries)	Similar resolution (#Entries, resolution range(Å))
R_{free}	91344	2919 (2.40-2.40)
Clashscore	102246	3407 (2.40-2.40)
Ramachandran outliers	100387	3351 (2.40-2.40)
Sidechain outliers	100360	3352 (2.40-2.40)
RSRZ outliers	91569	2928 (2.40-2.40)

The table below summarises the geometric issues observed across the polymeric chains and their fit to the electron density. The red, orange, yellow and green segments on the lower bar indicate the fraction of residues that contain outliers for ≥ 3 , 2, 1 and 0 types of geometric quality criteria. A grey segment represents the fraction of residues that are not modelled. The numeric value for each fraction is indicated below the corresponding segment, with a dot representing fractions $\leq 5\%$. The upper red bar (where present) indicates the fraction of residues that have poor fit to the electron density. The numeric value is given above the bar.

Mol	Chain	Length	Quality of chain
1	A	295	<div> <div>10%</div> <div>56%</div> <div>28%</div> <div>5% •</div> <div>9%</div> </div>
1	B	295	<div> <div>11%</div> <div>58%</div> <div>30%</div> <div>•</div> <div>9%</div> </div>

The following table lists non-polymeric compounds, carbohydrate monomers and non-standard residues in protein, DNA, RNA chains that are outliers for geometric or electron-density-fit criteria:

Mol	Type	Chain	Res	Chirality	Geometry	Clashes	Electron density
2	PHT	A	300	-	-	X	-

2 Entry composition [i](#)

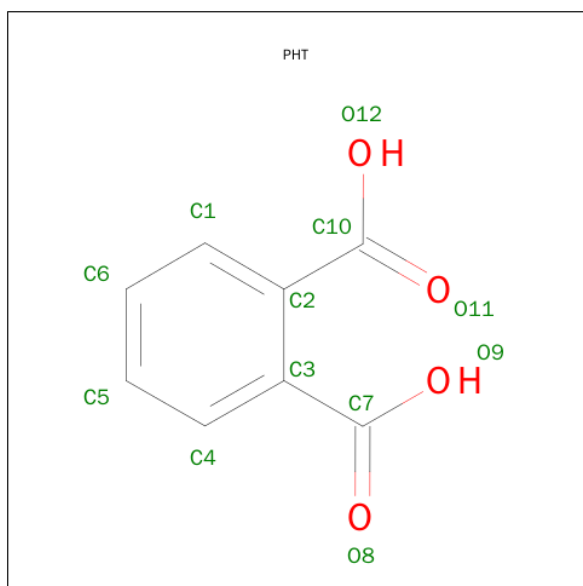
There are 3 unique types of molecules in this entry. The entry contains 4207 atoms, of which 0 are hydrogens and 0 are deuteriums.

In the tables below, the ZeroOcc column contains the number of atoms modelled with zero occupancy, the AltConf column contains the number of residues with at least one atom in alternate conformation and the Trace column contains the number of residues modelled with at most 2 atoms.

- Molecule 1 is a protein called Nicotinate-nucleotide pyrophosphorylase.

Mol	Chain	Residues	Atoms					ZeroOcc	AltConf	Trace
1	A	267	Total	C	N	O	S	2	0	0
			2041	1288	345	395	13			
1	B	267	Total	C	N	O	S	2	0	0
			2041	1288	345	395	13			

- Molecule 2 is PHTHALIC ACID (three-letter code: PHT) (formula: $C_8H_6O_4$).



Mol	Chain	Residues	Atoms			ZeroOcc	AltConf
2	A	1	Total	C	O	0	0
			12	8	4		
2	B	1	Total	C	O	0	0
			12	8	4		

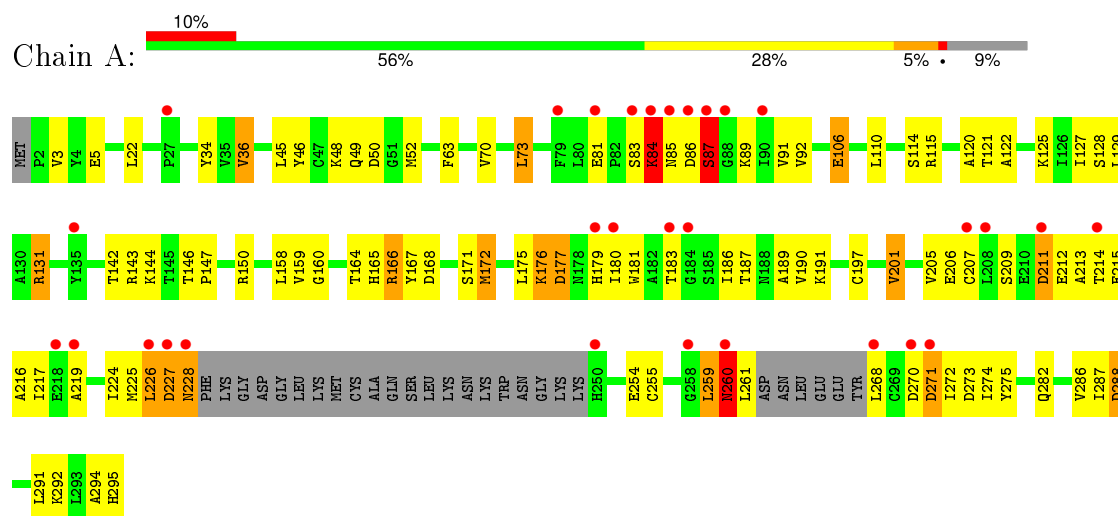
- Molecule 3 is water.

Mol	Chain	Residues	Atoms		ZeroOcc	AltConf
3	A	45	Total 45	O 45	0	0
3	B	56	Total 56	O 56	0	0

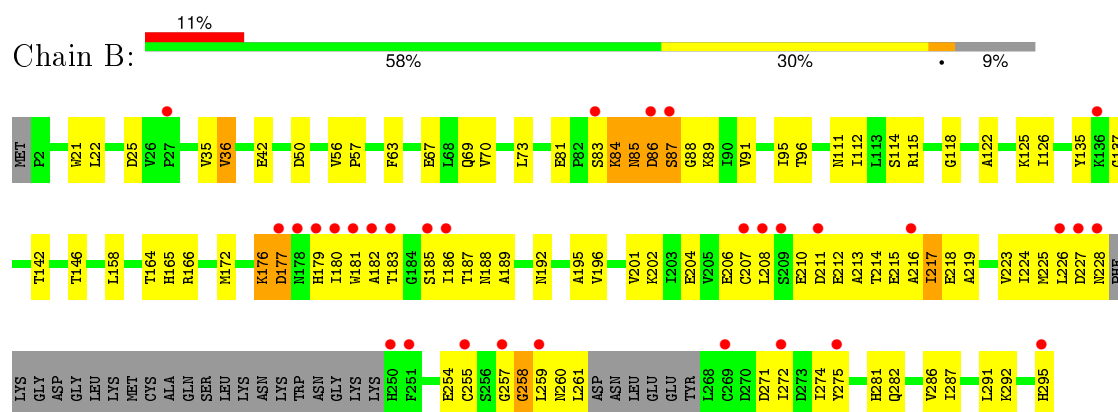
3 Residue-property plots

These plots are drawn for all protein, RNA and DNA chains in the entry. The first graphic for a chain summarises the proportions of errors displayed in the second graphic. The second graphic shows the sequence view annotated by issues in geometry and electron density. Residues are color-coded according to the number of geometric quality criteria for which they contain at least one outlier: green = 0, yellow = 1, orange = 2 and red = 3 or more. A red dot above a residue indicates a poor fit to the electron density ($RSRZ > 2$). Stretches of 2 or more consecutive residues without any outlier are shown as a green connector. Residues present in the sample, but not in the model, are shown in grey.

• Molecule 1: Nicotinate-nucleotide pyrophosphorylase



• Molecule 1: Nicotinate-nucleotide pyrophosphorylase



4 Data and refinement statistics

Property	Value	Source
Space group	H 3 2	Depositor
Cell constants a, b, c, α , β , γ	155.52Å 155.52Å 121.07Å 90.00° 90.00° 120.00°	Depositor
Resolution (Å)	46.93 – 2.40 46.93 – 2.40	Depositor EDS
% Data completeness (in resolution range)	97.6 (46.93-2.40) 97.6 (46.93-2.40)	Depositor EDS
R_{merge}	0.10	Depositor
R_{sym}	0.10	Depositor
$\langle I/\sigma(I) \rangle$ ¹	4.31 (at 2.39Å)	Xtrriage
Refinement program	REFMAC 5.2.0005	Depositor
R, R_{free}	0.183 , 0.225 0.217 , 0.247	Depositor DCC
R_{free} test set	2189 reflections (11.30%)	DCC
Wilson B-factor (Å ²)	35.6	Xtrriage
Anisotropy	0.060	Xtrriage
Bulk solvent k_{sol} (e/Å ³), B_{sol} (Å ²)	0.32 , 55.3	EDS
Estimated twinning fraction	No twinning to report.	Xtrriage
L-test for twinning ²	$\langle L \rangle = 0.48$, $\langle L^2 \rangle = 0.31$	Xtrriage
Outliers	1 of 21560 reflections (0.005%)	Xtrriage
F_o, F_c correlation	0.94	EDS
Total number of atoms	4207	wwPDB-VP
Average B, all atoms (Å ²)	47.0	wwPDB-VP

Xtrriage's analysis on translational NCS is as follows: *The analyses of the Patterson function reveals a significant off-origin peak that is 61.17 % of the origin peak, indicating pseudo translational symmetry. The chance of finding a peak of this or larger height randomly in a structure without pseudo translational symmetry is equal to 1.3629e-05. The detected translational NCS is most likely also responsible for the elevated intensity ratio.*

¹Intensities estimated from amplitudes.

²Theoretical values of $\langle |L| \rangle$, $\langle L^2 \rangle$ for acentric reflections are 0.5, 0.375 respectively for untwinned datasets, and 0.333, 0.2 for perfectly twinned datasets.

5 Model quality

5.1 Standard geometry

Bond lengths and bond angles in the following residue types are not validated in this section: PHT

The Z score for a bond length (or angle) is the number of standard deviations the observed value is removed from the expected value. A bond length (or angle) with $|Z| > 5$ is considered an outlier worth inspection. RMSZ is the root-mean-square of all Z scores of the bond lengths (or angles).

Mol	Chain	Bond lengths		Bond angles	
		RMSZ	# Z >5	RMSZ	# Z >5
1	A	0.46	0/2077	0.98	10/2810 (0.4%)
1	B	0.47	0/2077	0.71	4/2810 (0.1%)
All	All	0.47	0/4154	0.86	14/5620 (0.2%)

Chiral center outliers are detected by calculating the chiral volume of a chiral center and verifying if the center is modelled as a planar moiety or with the opposite hand. A planarity outlier is detected by checking planarity of atoms in a peptide group, atoms in a mainchain group or atoms of a sidechain that are expected to be planar.

Mol	Chain	#Chirality outliers	#Planarity outliers
1	A	0	1
1	B	0	1
All	All	0	2

There are no bond length outliers.

All (14) bond angle outliers are listed below:

Mol	Chain	Res	Type	Atoms	Z	Observed(°)	Ideal(°)
1	A	84	LYS	C-N-CA	17.97	166.63	121.70
1	A	87	SER	N-CA-C	-17.83	62.85	111.00
1	A	87	SER	CB-CA-C	15.96	140.43	110.10
1	A	84	LYS	CB-CA-C	-14.13	82.13	110.40
1	A	172	MET	CB-CA-C	13.44	137.28	110.40
1	A	84	LYS	N-CA-C	-11.73	79.33	111.00
1	A	172	MET	N-CA-C	-9.21	86.14	111.00
1	B	226	LEU	CB-CG-CD1	-8.18	97.09	111.00
1	B	182	ALA	CB-CA-C	-8.07	98.00	110.10
1	B	176	LYS	CB-CA-C	-8.01	94.37	110.40
1	A	87	SER	C-N-CA	7.62	138.29	122.30
1	A	260	ASN	CB-CA-C	7.07	124.54	110.40

Continued on next page...

Continued from previous page...

Mol	Chain	Res	Type	Atoms	Z	Observed(°)	Ideal(°)
1	B	216	ALA	CB-CA-C	-6.50	100.35	110.10
1	A	106	GLU	N-CA-C	5.38	125.53	111.00

There are no chirality outliers.

All (2) planarity outliers are listed below:

Mol	Chain	Res	Type	Group
1	A	87	SER	Peptide
1	B	84	LYS	Peptide

5.2 Too-close contacts ⓘ

In the following table, the Non-H and H(model) columns list the number of non-hydrogen atoms and hydrogen atoms in the chain respectively. The H(added) column lists the number of hydrogen atoms added and optimized by MolProbity. The Clashes column lists the number of clashes within the asymmetric unit, whereas Symm-Clashes lists symmetry related clashes.

Mol	Chain	Non-H	H(model)	H(added)	Clashes	Symm-Clashes
1	A	2041	0	2021	147	0
1	B	2041	0	2022	107	0
2	A	12	0	4	4	0
2	B	12	0	4	2	0
3	A	45	0	0	0	0
3	B	56	0	0	1	0
All	All	4207	0	4051	240	0

The all-atom clashscore is defined as the number of clashes found per 1000 atoms (including hydrogen atoms). The all-atom clashscore for this structure is 29.

All (240) close contacts within the same asymmetric unit are listed below, sorted by their clash magnitude.

Atom-1	Atom-2	Interatomic distance (Å)	Clash overlap (Å)
1:A:260:ASN:O	1:A:268:LEU:HD23	1.16	1.29
1:A:84:LYS:O	1:A:84:LYS:CG	1.72	1.26
1:A:260:ASN:O	1:A:268:LEU:CD2	1.88	1.22
1:A:259:LEU:HD22	1:A:259:LEU:N	1.57	1.19
1:B:215:GLU:HA	1:B:218:GLU:HG3	1.17	1.16
1:B:214:THR:O	1:B:218:GLU:HG2	1.43	1.15
1:A:85:ASN:C	1:A:87:SER:O	1.85	1.13

Continued on next page...

Continued from previous page...

Atom-1	Atom-2	Interatomic distance (Å)	Clash overlap (Å)
1:A:225:MET:C	1:A:226:LEU:HD12	1.69	1.10
1:A:259:LEU:HD22	1:A:259:LEU:H	1.22	1.00
1:A:86:ASP:N	1:A:87:SER:O	1.93	0.97
1:A:260:ASN:ND2	1:A:261:LEU:H	1.63	0.95
1:A:226:LEU:CD1	1:A:226:LEU:N	2.30	0.94
1:B:213:ALA:O	1:B:217:ILE:HD11	1.65	0.94
1:A:260:ASN:HD22	1:A:261:LEU:H	0.98	0.94
1:B:215:GLU:HA	1:B:218:GLU:CG	1.97	0.94
1:A:84:LYS:O	1:A:84:LYS:HG2	1.11	0.93
1:B:215:GLU:CA	1:B:218:GLU:HG3	1.98	0.93
1:B:213:ALA:O	1:B:217:ILE:CG1	2.17	0.93
1:B:165:HIS:HD2	1:B:166:ARG:H	1.19	0.90
1:A:180:ILE:HD12	1:A:186:ILE:HA	1.53	0.90
1:A:259:LEU:N	1:A:259:LEU:CD2	2.30	0.89
1:A:36:VAL:HG23	1:B:179:HIS:HA	1.53	0.89
1:B:214:THR:O	1:B:218:GLU:CG	2.21	0.87
1:A:260:ASN:HD22	1:A:261:LEU:N	1.71	0.87
1:A:261:LEU:C	1:A:268:LEU:HB3	1.95	0.87
1:A:225:MET:C	1:A:226:LEU:CD1	2.44	0.85
1:B:213:ALA:O	1:B:217:ILE:CD1	2.24	0.85
1:A:226:LEU:HD12	1:A:226:LEU:N	1.88	0.85
1:B:165:HIS:CD2	1:B:166:ARG:H	1.93	0.85
1:B:187:THR:HA	1:B:219:ALA:HB2	1.58	0.83
1:B:85:ASN:CG	1:B:86:ASP:N	2.30	0.83
1:A:36:VAL:CG2	1:B:179:HIS:HA	2.09	0.82
1:B:85:ASN:ND2	1:B:86:ASP:H	1.78	0.82
1:A:225:MET:O	1:A:226:LEU:HD12	1.78	0.82
1:A:259:LEU:O	1:A:260:ASN:HB2	1.78	0.81
1:A:207:CYS:SG	1:A:213:ALA:HA	2.20	0.81
1:A:52:MET:CE	1:A:120:ALA:HB1	2.11	0.80
1:B:215:GLU:O	1:B:218:GLU:HB2	1.82	0.80
1:B:85:ASN:ND2	1:B:86:ASP:N	2.29	0.79
1:A:114:SER:HB2	1:A:286:VAL:CG1	2.12	0.79
1:B:86:ASP:O	1:B:87:SER:CB	2.30	0.77
1:A:166:ARG:HD3	2:A:300:PHT:O11	1.85	0.77
1:A:52:MET:HE1	1:A:159:VAL:HG12	1.67	0.77
1:B:42:GLU:HG3	1:B:96:THR:HG22	1.68	0.76
1:A:121:THR:HG22	1:A:125:LYS:HE3	1.67	0.75
1:A:85:ASN:CA	1:A:87:SER:O	2.35	0.75
1:A:52:MET:HE2	1:A:120:ALA:HB1	1.68	0.75
1:A:165:HIS:CD2	1:A:166:ARG:H	2.05	0.75

Continued on next page...

Continued from previous page...

Atom-1	Atom-2	Interatomic distance (Å)	Clash overlap (Å)
1:A:186:ILE:HD12	1:A:212:GLU:HB2	1.71	0.72
1:B:213:ALA:O	1:B:217:ILE:HG12	1.91	0.71
1:A:227:ASP:C	1:A:227:ASP:OD1	2.30	0.70
1:B:114:SER:HB2	1:B:286:VAL:CG1	2.20	0.69
1:A:186:ILE:HG21	1:A:216:ALA:HB2	1.73	0.69
1:B:166:ARG:HD3	2:B:301:PHT:O12	1.90	0.69
1:A:213:ALA:O	1:A:217:ILE:HG13	1.93	0.68
1:A:211:ASP:O	1:A:214:THR:HG22	1.94	0.68
1:B:227:ASP:O	1:B:228:ASN:CB	2.40	0.68
1:A:206:GLU:HG3	1:A:225:MET:CE	2.25	0.67
1:B:227:ASP:O	1:B:228:ASN:CG	2.33	0.67
1:A:272:ILE:HB	1:A:275:TYR:CE1	2.29	0.67
1:A:106:GLU:O	1:A:110:LEU:HG	1.94	0.67
1:A:85:ASN:C	1:A:87:SER:N	2.48	0.67
1:B:227:ASP:O	1:B:228:ASN:ND2	2.28	0.66
1:B:291:LEU:O	1:B:292:LYS:HD3	1.95	0.66
1:A:260:ASN:O	1:A:268:LEU:HD22	1.93	0.66
1:B:125:LYS:HZ3	1:B:125:LYS:HB3	1.61	0.66
1:B:85:ASN:N	1:B:86:ASP:OD1	2.29	0.66
1:A:73:LEU:HD23	1:A:91:VAL:HG13	1.77	0.66
1:B:86:ASP:O	1:B:87:SER:HB2	1.94	0.66
1:A:226:LEU:N	1:A:226:LEU:HD13	2.09	0.65
1:A:52:MET:HE2	1:A:160:GLY:HA2	1.77	0.65
1:A:272:ILE:HB	1:A:275:TYR:HE1	1.61	0.65
1:A:84:LYS:HB3	1:A:84:LYS:NZ	2.12	0.65
1:A:186:ILE:CD1	1:A:212:GLU:HB2	2.27	0.65
1:B:85:ASN:O	1:B:88:GLY:N	2.31	0.64
1:B:86:ASP:OD1	1:B:86:ASP:N	2.29	0.63
1:A:125:LYS:O	1:A:129:LEU:HB2	1.98	0.63
1:B:211:ASP:O	1:B:214:THR:HB	1.99	0.63
1:B:85:ASN:C	1:B:86:ASP:OD1	2.37	0.63
1:A:121:THR:O	1:A:125:LYS:HG2	1.99	0.63
1:A:206:GLU:OE1	1:A:225:MET:HE2	1.99	0.62
1:A:183:THR:HG21	1:A:189:ALA:HA	1.81	0.62
1:B:180:ILE:HD13	1:B:186:ILE:HA	1.80	0.62
1:A:52:MET:HE1	1:A:159:VAL:C	2.20	0.61
1:A:52:MET:HE3	1:A:120:ALA:HB1	1.81	0.61
1:A:259:LEU:HD23	1:A:259:LEU:O	2.01	0.60
1:A:52:MET:CE	1:A:159:VAL:HG12	2.31	0.60
1:A:122:ALA:HA	1:A:125:LYS:NZ	2.17	0.60
1:A:259:LEU:CD2	1:A:259:LEU:H	2.02	0.60

Continued on next page...

Continued from previous page...

Atom-1	Atom-2	Interatomic distance (Å)	Clash overlap (Å)
1:A:147:PRO:HG2	1:B:112:ILE:HD13	1.84	0.59
1:A:52:MET:HE1	1:A:159:VAL:O	2.01	0.59
1:A:177:ASP:HB2	1:A:181:TRP:CZ2	2.36	0.59
1:B:86:ASP:C	1:B:87:SER:OG	2.31	0.59
1:A:260:ASN:ND2	1:A:261:LEU:N	2.41	0.59
1:B:83:SER:O	1:B:85:ASN:HA	2.02	0.59
1:A:206:GLU:HG3	1:A:225:MET:HE3	1.84	0.59
1:B:63:PHE:CD2	1:B:70:VAL:HG21	2.39	0.58
1:A:260:ASN:ND2	1:A:261:LEU:HD22	2.20	0.57
1:B:272:ILE:HB	1:B:275:TYR:CE1	2.40	0.57
1:A:286:VAL:CG1	1:A:287:ILE:N	2.68	0.57
1:A:261:LEU:C	1:A:268:LEU:CB	2.71	0.57
1:B:183:THR:OG1	1:B:189:ALA:HB2	2.05	0.57
1:A:52:MET:CE	1:A:160:GLY:HA2	2.34	0.57
1:A:206:GLU:CG	1:A:225:MET:HE2	2.35	0.56
1:A:146:THR:HG21	1:B:146:THR:HG21	1.88	0.56
1:B:122:ALA:O	1:B:126:ILE:HD13	2.06	0.56
1:B:223:VAL:C	1:B:224:ILE:HD12	2.25	0.56
1:B:135:TYR:CZ	1:B:137:GLY:HA3	2.41	0.55
1:B:261:LEU:HD12	1:B:261:LEU:N	2.21	0.55
1:A:260:ASN:CG	1:A:261:LEU:HD22	2.27	0.55
1:A:84:LYS:HB2	1:A:86:ASP:OD2	2.06	0.55
1:A:291:LEU:HD23	1:A:291:LEU:C	2.27	0.55
1:B:177:ASP:HB2	1:B:181:TRP:CZ2	2.43	0.54
1:A:114:SER:HB2	1:A:286:VAL:HG13	1.87	0.54
1:B:291:LEU:C	1:B:291:LEU:HD23	2.27	0.54
1:A:128:SER:HA	1:A:131:ARG:HB2	1.90	0.54
1:B:81:GLU:OE2	1:B:84:LYS:HE3	2.08	0.54
1:A:165:HIS:HD2	1:A:166:ARG:H	1.55	0.54
1:A:127:ILE:O	1:A:131:ARG:HD3	2.07	0.54
1:B:50:ASP:OD2	1:B:81:GLU:HG2	2.07	0.54
1:B:215:GLU:HA	1:B:218:GLU:CB	2.38	0.54
1:A:129:LEU:O	1:A:129:LEU:HD23	2.08	0.54
1:A:158:LEU:HG	1:A:164:THR:CG2	2.38	0.54
1:A:270:ASP:OD1	1:A:271:ASP:N	2.41	0.53
1:A:227:ASP:O	1:A:228:ASN:C	2.47	0.53
1:A:206:GLU:HG3	1:A:225:MET:HE2	1.91	0.53
1:A:84:LYS:HG3	1:A:87:SER:O	2.08	0.53
1:A:254:GLU:HG2	1:A:255:CYS:N	2.24	0.53
1:A:206:GLU:OE1	1:A:225:MET:CE	2.58	0.52
1:A:273:ASP:C	1:A:274:ILE:HG13	2.29	0.52

Continued on next page...

Continued from previous page...

Atom-1	Atom-2	Interatomic distance (Å)	Clash overlap (Å)
1:B:217:ILE:HD13	1:B:224:ILE:HG12	1.92	0.52
1:B:180:ILE:HD13	1:B:186:ILE:CA	2.40	0.52
1:A:186:ILE:O	1:A:190:VAL:HG23	2.10	0.52
1:B:176:LYS:HA	1:B:206:GLU:HB3	1.91	0.52
1:B:172:MET:HG3	1:B:202:LYS:O	2.09	0.52
1:A:143:ARG:HB2	2:A:300:PHT:O8	2.10	0.51
1:A:114:SER:HB2	1:A:286:VAL:HG11	1.89	0.51
1:A:84:LYS:HB3	1:A:84:LYS:HZ2	1.75	0.51
1:A:209:SER:HB3	1:A:212:GLU:OE2	2.11	0.50
1:B:183:THR:HG21	1:B:189:ALA:HA	1.94	0.50
1:A:291:LEU:O	1:A:292:LYS:HD3	2.11	0.50
1:A:45:LEU:HG	1:A:92:VAL:CG2	2.42	0.50
1:B:259:LEU:HD23	1:B:260:ASN:HD22	1.76	0.50
1:A:227:ASP:OD1	1:A:228:ASN:N	2.44	0.50
1:A:83:SER:O	1:A:84:LYS:C	2.49	0.49
1:A:186:ILE:HG23	1:A:205:VAL:HG11	1.94	0.49
1:B:85:ASN:CG	1:B:87:SER:H	2.16	0.49
1:B:21:TRP:CZ3	1:B:112:ILE:HD11	2.46	0.49
1:A:206:GLU:CG	1:A:225:MET:CE	2.90	0.49
1:B:86:ASP:O	1:B:87:SER:OG	2.29	0.48
1:B:210:GLU:O	1:B:214:THR:N	2.46	0.48
1:A:294:ALA:O	1:A:295:HIS:C	2.51	0.48
1:A:179:HIS:HB3	1:B:35:VAL:HG21	1.95	0.48
1:A:50:ASP:OD1	1:A:81:GLU:HA	2.14	0.48
1:A:85:ASN:C	1:A:87:SER:C	2.69	0.48
1:B:224:ILE:N	1:B:224:ILE:HD12	2.29	0.48
1:A:286:VAL:HG12	1:A:287:ILE:N	2.28	0.48
1:A:63:PHE:CD2	1:A:70:VAL:HG21	2.48	0.48
1:A:83:SER:O	1:A:85:ASN:N	2.47	0.47
1:A:46:TYR:CD2	1:A:89:LYS:HD3	2.48	0.47
1:B:186:ILE:HB	1:B:215:GLU:CD	2.34	0.47
1:A:212:GLU:HA	1:A:215:GLU:HG2	1.95	0.47
1:B:204:GLU:HA	1:B:223:VAL:O	2.13	0.47
1:B:187:THR:HA	1:B:219:ALA:CB	2.39	0.47
1:B:185:SER:HB3	1:B:188:ASN:OD1	2.13	0.47
1:A:3:VAL:HG12	1:A:5:GLU:HG2	1.96	0.47
1:A:197:CYS:HB2	1:A:201:VAL:CG1	2.44	0.47
1:A:115:ARG:NH1	1:B:282:GLN:HE21	2.12	0.47
1:B:86:ASP:C	1:B:87:SER:HG	2.16	0.47
1:B:186:ILE:HB	1:B:215:GLU:HG3	1.96	0.47
1:A:48:LYS:HB2	1:A:288:ASP:HB3	1.96	0.47

Continued on next page...

Continued from previous page...

Atom-1	Atom-2	Interatomic distance (Å)	Clash overlap (Å)
1:A:49:GLN:HG3	1:A:288:ASP:HB2	1.97	0.47
1:B:215:GLU:HA	1:B:218:GLU:HB2	1.97	0.47
1:A:168:ASP:HB2	1:B:25:ASP:O	2.14	0.46
1:B:177:ASP:O	1:B:180:ILE:HG23	2.15	0.46
1:A:175:LEU:C	1:A:176:LYS:HD2	2.35	0.46
1:B:158:LEU:HG	1:B:164:THR:CG2	2.46	0.46
1:A:142:THR:HG22	2:A:300:PHT:C5	2.45	0.46
1:A:91:VAL:HG13	1:A:91:VAL:O	2.16	0.46
1:B:56:VAL:N	1:B:57:PRO:HD2	2.31	0.46
1:A:183:THR:OG1	1:A:189:ALA:HB2	2.15	0.46
1:B:227:ASP:O	1:B:228:ASN:HB3	2.13	0.46
1:B:165:HIS:CD2	1:B:166:ARG:N	2.74	0.46
1:B:217:ILE:H	1:B:217:ILE:HG12	1.35	0.46
1:B:177:ASP:HA	1:B:180:ILE:CG2	2.46	0.45
1:B:213:ALA:O	1:B:217:ILE:HG13	2.11	0.45
1:A:206:GLU:CD	1:A:225:MET:CE	2.84	0.45
1:A:143:ARG:HG3	2:A:300:PHT:O11	2.15	0.45
1:A:209:SER:O	1:A:212:GLU:HG2	2.17	0.45
1:A:206:GLU:CD	1:A:225:MET:HE2	2.36	0.45
1:A:175:LEU:HD13	1:A:189:ALA:HB1	1.98	0.45
1:A:144:LYS:HA	1:B:111:ASN:OD1	2.15	0.45
1:A:114:SER:CB	1:A:286:VAL:HG13	2.47	0.45
1:A:150:ARG:HG2	1:A:167:TYR:CZ	2.52	0.44
1:A:147:PRO:HG2	1:B:112:ILE:CD1	2.47	0.44
1:A:122:ALA:HA	1:A:125:LYS:HZ2	1.80	0.44
1:B:180:ILE:O	1:B:180:ILE:HD12	2.18	0.44
1:A:181:TRP:CH2	1:B:295:HIS:O	2.71	0.44
1:B:70:VAL:HG13	1:B:95:ILE:HD13	1.99	0.44
1:A:81:GLU:C	1:A:83:SER:H	2.21	0.44
1:A:215:GLU:O	1:A:219:ALA:HB2	2.18	0.44
1:B:177:ASP:O	1:B:180:ILE:CG2	2.66	0.43
1:A:171:SER:O	1:A:172:MET:HB2	2.17	0.43
1:B:257:GLY:O	1:B:258:GLY:C	2.57	0.43
1:A:84:LYS:CB	1:A:84:LYS:NZ	2.79	0.43
1:A:176:LYS:O	1:A:180:ILE:HG12	2.18	0.43
1:B:114:SER:HB2	1:B:286:VAL:HG13	2.00	0.42
1:B:261:LEU:H	1:B:261:LEU:HD12	1.82	0.42
1:A:34:TYR:CE1	1:B:196:VAL:HG13	2.55	0.42
1:A:282:GLN:HE21	1:B:115:ARG:NH1	2.17	0.42
1:B:254:GLU:HG2	1:B:255:CYS:N	2.35	0.42
1:B:281:HIS:HD2	3:B:354:HOH:O	2.03	0.42

Continued on next page...

Continued from previous page...

Atom-1	Atom-2	Interatomic distance (Å)	Clash overlap (Å)
1:A:114:SER:C	1:A:286:VAL:HG13	2.40	0.42
1:A:177:ASP:HB2	1:A:181:TRP:CE2	2.55	0.42
1:B:70:VAL:HG22	1:B:95:ILE:CD1	2.50	0.42
1:A:165:HIS:CD2	1:A:166:ARG:N	2.82	0.42
1:B:118:GLY:HA2	1:B:287:ILE:HG12	2.01	0.42
1:B:214:THR:C	1:B:218:GLU:CG	2.84	0.41
1:A:73:LEU:CD2	1:A:91:VAL:HG13	2.48	0.41
1:B:212:GLU:C	1:B:214:THR:H	2.22	0.41
1:A:187:THR:O	1:A:191:LYS:HG3	2.20	0.41
1:B:142:THR:HG22	2:B:301:PHT:C5	2.51	0.41
1:A:84:LYS:CB	1:A:84:LYS:HZ2	2.34	0.41
1:A:186:ILE:HG21	1:A:216:ALA:CB	2.46	0.41
1:A:255:CYS:HB2	1:A:272:ILE:HD13	2.01	0.41
1:B:206:GLU:HG3	1:B:225:MET:HE2	2.03	0.41
1:B:259:LEU:C	1:B:259:LEU:HD23	2.41	0.41
1:B:192:ASN:O	1:B:195:ALA:HB3	2.21	0.41
1:A:115:ARG:HH12	1:B:282:GLN:HE21	1.68	0.41
1:B:254:GLU:HG3	1:B:274:ILE:HB	2.03	0.41
1:A:261:LEU:O	1:A:268:LEU:HB3	2.20	0.40
1:A:224:ILE:HG22	1:A:226:LEU:HD11	2.04	0.40
1:A:179:HIS:HB3	1:B:35:VAL:CG2	2.50	0.40
1:B:35:VAL:HG23	1:B:36:VAL:N	2.36	0.40
1:A:261:LEU:HD13	1:A:261:LEU:HA	1.90	0.40
1:A:114:SER:CB	1:A:286:VAL:CG1	2.92	0.40
1:B:91:VAL:O	1:B:91:VAL:HG13	2.21	0.40
1:A:176:LYS:N	1:A:176:LYS:HD2	2.37	0.40
1:B:114:SER:C	1:B:286:VAL:HG13	2.41	0.40
1:B:207:CYS:C	1:B:208:LEU:HD12	2.41	0.40

There are no symmetry-related clashes.

5.3 Torsion angles [i](#)

5.3.1 Protein backbone [i](#)

In the following table, the Percentiles column shows the percent Ramachandran outliers of the chain as a percentile score with respect to all X-ray entries followed by that with respect to entries of similar resolution.

The Analysed column shows the number of residues for which the backbone conformation was analysed, and the total number of residues.

Mol	Chain	Analysed	Favoured	Allowed	Outliers	Percentiles	
1	A	261/295 (88%)	245 (94%)	16 (6%)	0	100	100
1	B	261/295 (88%)	241 (92%)	18 (7%)	2 (1%)	24	35
All	All	522/590 (88%)	486 (93%)	34 (6%)	2 (0%)	39	56

All (2) Ramachandran outliers are listed below:

Mol	Chain	Res	Type
1	B	258	GLY
1	B	271	ASP

5.3.2 Protein sidechains ⓘ

In the following table, the Percentiles column shows the percent sidechain outliers of the chain as a percentile score with respect to all X-ray entries followed by that with respect to entries of similar resolution.

The Analysed column shows the number of residues for which the sidechain conformation was analysed, and the total number of residues.

Mol	Chain	Analysed	Rotameric	Outliers	Percentiles	
1	A	224/248 (90%)	207 (92%)	17 (8%)	16	25
1	B	224/248 (90%)	212 (95%)	12 (5%)	27	43
All	All	448/496 (90%)	419 (94%)	29 (6%)	21	33

All (29) residues with a non-rotameric sidechain are listed below:

Mol	Chain	Res	Type
1	A	22	LEU
1	A	36	VAL
1	A	73	LEU
1	A	84	LYS
1	A	131	ARG
1	A	166	ARG
1	A	176	LYS
1	A	177	ASP
1	A	201	VAL
1	A	211	ASP
1	A	226	LEU
1	A	227	ASP
1	A	228	ASN
1	A	259	LEU

Continued on next page...

Continued from previous page...

Mol	Chain	Res	Type
1	A	260	ASN
1	A	271	ASP
1	A	288	ASP
1	B	22	LEU
1	B	36	VAL
1	B	67	GLU
1	B	69	GLN
1	B	73	LEU
1	B	85	ASN
1	B	86	ASP
1	B	87	SER
1	B	89	LYS
1	B	177	ASP
1	B	201	VAL
1	B	217	ILE

Some sidechains can be flipped to improve hydrogen bonding and reduce clashes. All (11) such sidechains are listed below:

Mol	Chain	Res	Type
1	A	165	HIS
1	A	178	ASN
1	A	192	ASN
1	A	260	ASN
1	A	281	HIS
1	A	282	GLN
1	A	295	HIS
1	B	165	HIS
1	B	260	ASN
1	B	281	HIS
1	B	282	GLN

5.3.3 RNA ⓘ

There are no RNA molecules in this entry.

5.4 Non-standard residues in protein, DNA, RNA chains ⓘ

There are no non-standard protein/DNA/RNA residues in this entry.

5.5 Carbohydrates

There are no carbohydrates in this entry.

5.6 Ligand geometry

2 ligands are modelled in this entry.

In the following table, the Counts columns list the number of bonds (or angles) for which Mogul statistics could be retrieved, the number of bonds (or angles) that are observed in the model and the number of bonds (or angles) that are defined in the chemical component dictionary. The Link column lists molecule types, if any, to which the group is linked. The Z score for a bond length (or angle) is the number of standard deviations the observed value is removed from the expected value. A bond length (or angle) with $|Z| > 2$ is considered an outlier worth inspection. RMSZ is the root-mean-square of all Z scores of the bond lengths (or angles).

Mol	Type	Chain	Res	Link	Bond lengths			Bond angles		
					Counts	RMSZ	$\# Z > 2$	Counts	RMSZ	$\# Z > 2$
2	PHT	A	300	-	6,12,12	0.49	0	8,16,16	0.71	0
2	PHT	B	301	-	6,12,12	0.49	0	8,16,16	0.74	0

In the following table, the Chirals column lists the number of chiral outliers, the number of chiral centers analysed, the number of these observed in the model and the number defined in the chemical component dictionary. Similar counts are reported in the Torsion and Rings columns. '-' means no outliers of that kind were identified.

Mol	Type	Chain	Res	Link	Chirals	Torsions	Rings
2	PHT	A	300	-	-	0/0/8/8	0/1/1/1
2	PHT	B	301	-	-	0/0/8/8	0/1/1/1

There are no bond length outliers.

There are no bond angle outliers.

There are no chirality outliers.

There are no torsion outliers.

There are no ring outliers.

2 monomers are involved in 6 short contacts:

Mol	Chain	Res	Type	Clashes	Symm-Clashes
2	A	300	PHT	4	0
2	B	301	PHT	2	0

5.7 Other polymers

There are no such residues in this entry.

5.8 Polymer linkage issues

There are no chain breaks in this entry.

6 Fit of model and data ⓘ

6.1 Protein, DNA and RNA chains ⓘ

In the following table, the column labelled ‘#RSRZ> 2’ contains the number (and percentage) of RSRZ outliers, followed by percent RSRZ outliers for the chain as percentile scores relative to all X-ray entries and entries of similar resolution. The OWAB column contains the minimum, median, 95th percentile and maximum values of the occupancy-weighted average B-factor per residue. The column labelled ‘Q< 0.9’ lists the number of (and percentage) of residues with an average occupancy less than 0.9.

Mol	Chain	Analysed	<RSRZ>	#RSRZ>2	OWAB(Å ²)	Q<0.9
1	A	267/295 (90%)	0.39	30 (11%) 7 7	15, 38, 103, 138	1 (0%)
1	B	267/295 (90%)	0.38	31 (11%) 6 6	15, 39, 104, 142	1 (0%)
All	All	534/590 (90%)	0.39	61 (11%) 7 7	15, 39, 104, 142	2 (0%)

All (61) RSRZ outliers are listed below:

Mol	Chain	Res	Type	RSRZ
1	B	228	ASN	8.0
1	B	209	SER	7.0
1	A	228	ASN	6.5
1	B	180	ILE	5.6
1	A	183	THR	5.3
1	A	211	ASP	5.2
1	B	275	TYR	5.0
1	B	183	THR	4.9
1	B	177	ASP	4.7
1	A	85	ASN	4.3
1	A	268	LEU	4.1
1	A	180	ILE	4.0
1	A	135	TYR	3.9
1	A	86	ASP	3.9
1	B	208	LEU	3.8
1	B	211	ASP	3.7
1	A	227	ASP	3.7
1	A	219	ALA	3.6
1	A	208	LEU	3.6
1	A	79	PHE	3.6
1	A	260	ASN	3.5
1	B	87	SER	3.4
1	B	136	LYS	3.4
1	A	207	CYS	3.3

Continued on next page...

Continued from previous page...

Mol	Chain	Res	Type	RSRZ
1	A	27	PRO	3.2
1	B	178	ASN	3.2
1	B	185	SER	3.1
1	A	258	GLY	3.1
1	B	257	GLY	3.1
1	B	27	PRO	3.0
1	A	84	LYS	3.0
1	A	218	GLU	2.9
1	B	259	LEU	2.9
1	A	87	SER	2.8
1	B	186	ILE	2.8
1	B	181	TRP	2.7
1	B	255	CYS	2.7
1	B	251	PHE	2.6
1	B	86	ASP	2.6
1	A	226	LEU	2.6
1	B	207	CYS	2.6
1	B	295	HIS	2.6
1	A	271	ASP	2.6
1	B	216	ALA	2.6
1	A	83	SER	2.5
1	B	269	CYS	2.5
1	B	272	ILE	2.4
1	B	182	ALA	2.4
1	A	270	ASP	2.3
1	A	250	HIS	2.3
1	B	227	ASP	2.3
1	A	214	THR	2.2
1	A	81	GLU	2.2
1	A	179	HIS	2.2
1	B	226	LEU	2.2
1	B	179	HIS	2.1
1	B	83	SER	2.1
1	B	250	HIS	2.1
1	A	88	GLY	2.1
1	A	184	GLY	2.0
1	A	90	ILE	2.0

6.2 Non-standard residues in protein, DNA, RNA chains ⓘ

There are no non-standard protein/DNA/RNA residues in this entry.

6.3 Carbohydrates [i](#)

There are no carbohydrates in this entry.

6.4 Ligands [i](#)

In the following table, the Atoms column lists the number of modelled atoms in the group and the number defined in the chemical component dictionary. LLDF column lists the quality of electron density of the group with respect to its neighbouring residues in protein, DNA or RNA chains. The B-factors column lists the minimum, median, 95th percentile and maximum values of B factors of atoms in the group. The column labelled 'Q< 0.9' lists the number of atoms with occupancy less than 0.9.

Mol	Type	Chain	Res	Atoms	RSCC	RSR	LLDF	B-factors(\AA^2)	Q<0.9
2	PHT	A	300	12/12	0.94	0.16	0.08	31,34,39,43	0
2	PHT	B	301	12/12	0.94	0.16	-0.07	28,30,32,32	0

6.5 Other polymers [i](#)

There are no such residues in this entry.